

# Role of mitochondria in the pheromone- and amiodarone-induced programmed death of yeast

Andrei I. Pozniakovsky,<sup>1</sup> Dmitry A. Knorre,<sup>2</sup> Olga V. Markova,<sup>2</sup> Anthony A. Hyman,<sup>1</sup> Vladimir P. Skulachev,<sup>2</sup> and Fedor F. Severin<sup>3</sup>

<sup>1</sup>Max Planck Institute of Molecular Cell Biology and Genetics, 01307 Dresden, Germany

<sup>2</sup>A.N. Belozersky Institute of Physico-Chemical Biology, Moscow State University, Moscow 119992, Russia

<sup>3</sup>BioTechnological Center, Proteomics and Cellular Machines, University of Technology Dresden, D-01307 Dresden, Germany

Although programmed cell death (PCD) is extensively studied in multicellular organisms, in recent years it has been shown that a unicellular organism, yeast *Saccharomyces cerevisiae*, also possesses death program(s). In particular, we have found that a high doses of yeast pheromone is a natural stimulus inducing PCD. Here, we show that the death cascades triggered by pheromone and by a drug amiodarone are very similar. We focused on the role of mitochondria during the pheromone/amiodarone-induced PCD. For the first time,

a functional chain of the mitochondria-related events required for a particular case of yeast PCD has been revealed: an enhancement of mitochondrial respiration and of its energy coupling, a strong increase of mitochondrial membrane potential, both events triggered by the rise of cytoplasmic  $[Ca^{2+}]$ , a burst in generation of reactive oxygen species in center o of the respiratory chain complex III, mitochondrial thread-grain transition, and cytochrome c release from mitochondria. A novel mitochondrial protein required for thread-grain transition is identified.

## Introduction

Apoptotic cell death is a key event during the development of multicellular organisms. Apoptosis of damaged cells is also a common defense mechanism used throughout animal and plant kingdoms. There is accumulating evidence that unicellular organisms are also equipped with suicide programs (for reviews see Raff, 1998; Lam et al., 1999; Lewis, 2000; Skulachev, 2001, 2002).

Studies on the unicellular yeast *Saccharomyces cerevisiae* are especially promising because it is a genetically tractable organism with a well studied biochemistry. Indications that apoptosis-like programs are present in *S. cerevisiae* were obtained in studies where pro- or antiapoptotic mammalian genes were incorporated into the yeast genome. In particular, Kane et al. (1993) reported that an antiapoptotic mammalian protein, Bcl-2 ( $\beta$ -cell lymphocytic-leukemia protooncogene-2), rescued a yeast mutant lacking superoxide dismutase. Additionally, Zha et al. (1996) and Manon et al. (1997) found that

proapoptotic mammalian protein Bax caused growth arrest and death of the yeast cells. Several other studies revealed that certain mutations in the *S. cerevisiae* genome cause cell death entailing the appearance of features of the mammalian cell apoptosis (Madeo et al., 1997; Yamaki et al., 2001; Zhang et al., 2003; Qi et al., 2003). Certain harsh treatments induce cell death resembling apoptosis. Madeo et al. (1999) and Ligr et al. (2001) and Ludovico et al. (2001) and Davermann et al. (2002) reported that  $H_2O_2$  and acetic acid, respectively, kill yeast in a process accompanied by typical apoptotic changes. High  $[NaCl]$  (Huh et al., 2002), amphotericin B (Phillips et al., 2003), and the DNA-damaging drug adozelesin (Blanchard et al., 2002) were shown to kill yeast, inducing some features of apoptosis. Aging yeast cells were also found to demonstrate multiple apoptotic markers (Laun et al., 2001; Herker et al., 2004; Fabrizio et al., 2004). Furthermore, mutations have been described that seem to extend yeast life span by inactivating the suicide program (Fabrizio et al., 2001, 2003, 2004). Yeast analogues of some components of the apoptotic cascade have been described, i.e., a caspase (Madeo et al., 2002b), Omi (Fahrenkrog et al., 2004), and apoptosis-inducing factor (Wissing et al., 2004; for reviews on the programmed death in yeast see Skulachev, 2002; Jin and Reed, 2002; Madeo et al., 2002a; Breitenbach et al., 2003; Weinberger et al., 2003).

A.I. Pozniakovsky, D.A. Knorre, and O.V. Markova contributed equally to this paper.

Correspondence to Fedor F. Severin: severin@mpi-cdg.de

Abbreviations used in this paper:  $\Delta\Psi$ , mitochondrial transmembrane electric potential difference; FCCP, trifluoromethoxycarbonyl cyanide phenylhydrazone;  $H_2DCF\text{-}DA$ , dichlorofluorescein diacetate; NAC, *N*-acetyl cysteine; PCD, programmed cell death; ROS, reactive oxygen species.

The online version of this article includes supplemental material.

Narasimhan et al. (2001) showed that the plant antibiotic osmotin caused an apoptosis-like death of yeast. Surprisingly, certain components of the pheromone cascade were reported to be involved in the osmotin killing. The reason for this became clear when we described pheromone-induced programmed death of *S. cerevisiae* (Severin and Hyman, 2002). Although low concentrations of the pheromone activate the MAPK cascade and initiate the mating program, higher doses of pheromone induce cell death (for review see Kurjan, 1993). We found that this death shows several traits typical for the mitochondria-dependent apoptosis of animal cells (Severin and Hyman, 2002; Table I).

Importantly, mitochondria are essential for most of the types of apoptosis in animals (Newmeyer et al., 1994; Skulachev, 1999). In particular, it was found that apoptosis-inducing factor (Susin et al., 1996, 1999) and cytochrome *c* (Liu et al., 1996; Yang et al., 1997; Kluck et al., 1997), normally sequestered in the mitochondrial intermembrane space, are released into the cytosol in response to various apoptotic stimuli, activating the apoptotic cascade.

A limitation of studies on the role of mitochondria in the pheromone-induced yeast death arises from the fact that formation of de novo protein(s) is involved (Severin and Hyman, 2002), complicating kinetic analysis of fast stages of the process downstream of translation, at which mitochondria are most probably involved. To overcome such a difficulty, we looked for ways to trigger the same cascade downstream of translation. We reasoned that one way of activating the cell death program could be by disrupting  $Ca^{2+}$  homeostasis because even low concentrations of pheromone appear to be toxic for yeast calmodulin mutants (Cyert and Thorner, 1992; Moser et al., 1996). Therefore, we tried several  $Ca^{2+}$  ionophores and amiodarone. Although  $Ca^{2+}$  ionophores and amiodarone showed qualitatively similar effects, it was amiodarone that was found to be the fastest. In mammals, amiodarone (i.e., 2-butyl-3-benzofuranyl-

4-[2-(diethylamino)-ethoxy]-3,5-diiodophenylketone hydrochloride) is known as an antiarrhythmic agent. It blocks the L-type  $Ca^{2+}$  channels,  $Na^+$  channels, and  $\beta$ -adrenergic receptors (Varbiro et al., 2003). Recently, it was found to possess broad-range fungicidal activity (Courchesne, 2002), inducing an increase of cytosolic concentration of  $Ca^{2+}$  that comes to cytosol from both extracellular media and intracellular depot (Courchesne and Ozturk, 2003; Gupta et al., 2003). Furthermore, it was known that  $\alpha$ -factor caused a major increase in cytosolic  $[Ca^{2+}]$  (Ohsumi and Anraku, 1985). Our observation that a mutant with a compromised calmodulin-calcineurin system was sensitized to the  $\alpha$ -factor-induced death seemed to point to an involvement of  $Ca^{2+}$  (Severin and Hyman, 2002).

In the present paper, we show that both high pheromone and amiodarone can trigger the sequential apoptotic changes in mitochondria.

Our data suggest that a  $Ca^{2+}$ -induced activation of mitochondrial respiration and mitochondrial transmembrane electric potential difference ( $\Delta\Psi$ ) increase, followed by reactive oxygen species (ROS) production and mitochondrial thread-grain transition, are the key steps in the pheromone-induced programmed death of yeast. A mitochondrial protein (Ysp1), specifically required for the mitochondrial thread-grain transition, de-energization, and the cell death, was identified.

## Results

### Amiodarone initiates the mitochondria-based steps of the pheromone-linked programmed death cascade

In the first series of experiments, we confirmed the data of Courchesne (2002) that micromolar amiodarone kills *S. cerevisiae* (Fig. 1 A). The data presented in Fig. 1 (B and C) and summarized in Table I reveal striking similarity between the pheromone- and amiodarone-induced deaths. In both cases, an increase in

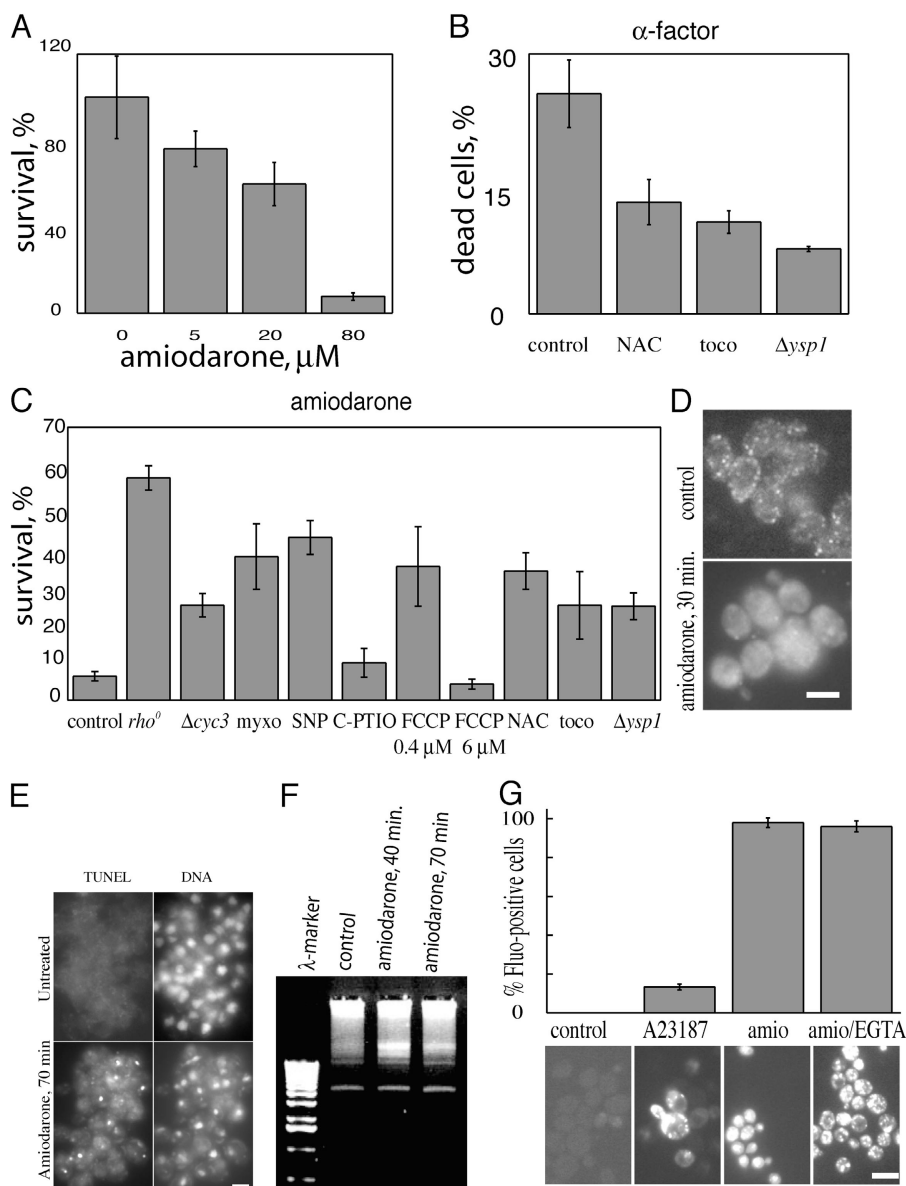
Table I. Comparison of the inhibitory patterns of the  $\alpha$ -factor and amiodarone effects

Inhibitor of the death program	Target	Inhibition of death program caused by	
		$\alpha$ -factor	amiodarone
$\Delta ste20$	Ste20	+	-
cycloheximide	translation	+	-
<i>rho</i> <sup>0</sup> mutation	mtDNA	+	+
$\Delta cyc3$	cytochromes <i>c</i>	+	+
myxothiazol	$Q_o$ center	+	+
antimycin A	$Q_i$ center	-	-
KCN	Cyt. ox.	+	+
oligomycin	$F_o$	+	+
FCCP (0.4 $\mu M$ )	$\Delta\Psi_m$	+	+
FCCP (6 $\mu M$ )	$\Delta\Psi_m$	-	-
C-PTIO	NO $\downarrow$	ND	-
SNP	NO $\uparrow$	ND	+
NAC	ROS $\downarrow$	+	+
$\alpha$ -tocopherol	ROS $\downarrow$	+	+
$\Delta ysp1$	Ysp1	+	+
		Stimulation of death program caused by	
Activator of the death program	Target	$\alpha$ -factor	amiodarone
$\Delta cmd 1-6$	calmodulin-calcineurin system	+	+

survival is induced by *rho*<sup>0</sup> mutation, inability to form active cytochrome *c* ( $\Delta$ *cyc3*, a deletion of holocytochrome *c* synthase), addition of mitochondrial respiratory chain inhibitors (myxothiazol or KCN), H<sup>+</sup>-ATP-synthase inhibitor oligomycin, low concentrations of protonophorous uncoupler trifluoromethoxycarbonyl cyanide phenylhydrazine (FCCP), antioxidants (*N*-acetyl cysteine [NAC] or  $\alpha$ -tocopherol), and a deletion in the gene *ysp1* (concerning this mutation, see section Amiodarone-induced Ysp1-dependent fragmentation of mitochondrial filaments). Mutation arresting the calmodulin-calcineurin system sensitized yeast to the killing by both  $\alpha$ -factor and amiodarone. Addition of an NO precursor, sodium nitroprusside, increased the survival after the amiodarone treatment, which might be explained by a cytochrome oxidase inhibition by NO. In contrast, a NO scavenger carbonyl phenyl-tetramethylimidazole oxide was without statistically significant effect. As for such a respiratory chain inhibitor as antimycin A, it was without any reproducible influence in both  $\alpha$ -factor and amiodarone cases (unpublished data).

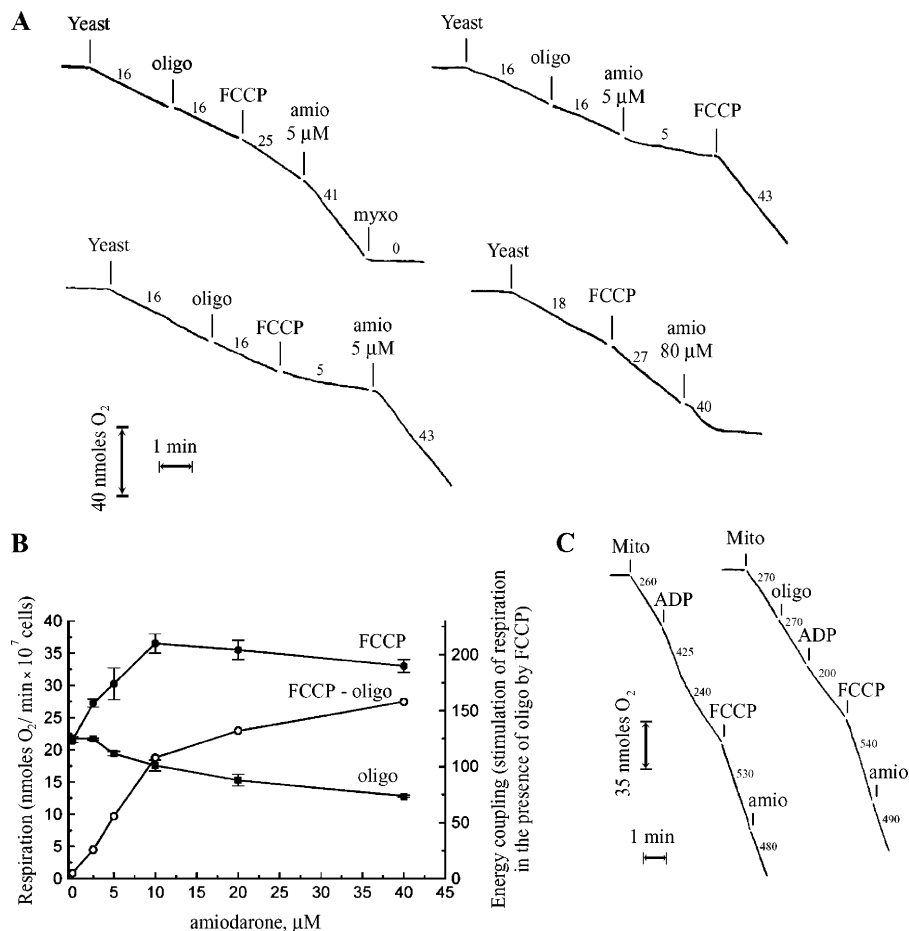
To confirm that the amiodarone-induced death, similar to programmed cell death (PCD) triggered by  $\alpha$ -factor, is accompanied by apoptotic markers, we checked the localization of cytochrome *c* and DNA fragmentation after amiodarone addition. As shown in Fig. 1 D, 30 min of amiodarone treatment initiates cytochrome *c* release from mitochondria to cytosol. DNA fragmentation is also induced as shown by TUNEL and DNA cleavage assays (Fig. 1, E and F). In line with the observations of Courchesne and Ozturk (2003) and Gupta et al. (2003), we observed that amiodarone, similar to pheromone, induces a strong increase in cytosolic [Ca<sup>2+</sup>]. A significant Ca<sup>2+</sup> increase was found even in the presence of EGTA when only the intracellular Ca<sup>2+</sup> pools could be its source (Fig. 1 G).

Thus, the amiodarone- and pheromone-induced cell deaths are very similar. Because the effects of amiodarone were stronger and very much faster than those of  $\alpha$ -factor, the following analysis was done mainly using the amiodarone system.



**Figure 1. Pheromone- and amiodarone-induced cell death of yeast share common features, including apoptotic markers.** (A) Amiodarone treatment decreases the percentage of colony-forming cells. (B) 0.1 mg/ml  $\alpha$ -factor was added. (C) 80  $\mu$ M amiodarone was added to all of the samples. Other additions were as follows: 2  $\mu$ M myxothiazol (myxo); 3 mM sodium nitroprusside (SNP); 1 mM carbonyl phenyl-tetramethylimidazole oxide (C-PTIO); 30 mM NAC; 20  $\mu$ M  $\alpha$ -tocopherol (toco). Cell survival in amiodarone experiments was determined by plating and in pheromone experiments by counting Methylene blue-positive cells. Error bars represent SD of three independent experiments. (D) Cytochrome *c* is released from mitochondria after 30 min of amiodarone treatment. Fragmentation of mitochondrial filaments in control is an artifact of formaldehyde fixation. (E and F) DNA is fragmented as shown by TUNEL and DNA cleavage, respectively. (G) Amiodarone, similar to Ca<sup>2+</sup> ionophore A23187, triggers a cytosolic Ca<sup>2+</sup> rise inside the cells. The effect of 80  $\mu$ M amiodarone (amio) is relatively stronger as shown by the representative images and the percentages of Fluor-3/AM-positive cells. The effect of amiodarone is not abolished by EGTA and, hence, does not depend critically on the external Ca<sup>2+</sup>. Bars, 10  $\mu$ m.

**Figure 2. Effect of amiodarone on respiration of *S. cerevisiae* cells or mitochondria.** Additions were as follows: (A and B) yeast,  $0.6 \times 10^7$  cells/ml; 10  $\mu\text{g/ml}$  oligomycin (oligo); 1  $\mu\text{M}$  FCCP; amiodarone (amio); 7  $\mu\text{M}$  myxothiazol (myxo). (C) Yeast mitochondria (0.1 mg of protein/ml; mito); 150  $\mu\text{M}$  ADP; 1  $\mu\text{g/ml}$  oligomycin (oligo); 0.5  $\mu\text{M}$  FCCP; 5  $\mu\text{M}$  amiodarone. Numbers near the curves: nM  $\text{O}_2/\text{min} \times 10^{-7}$  cells (A) or nM  $\text{O}_2/\text{min} \times \text{mg protein}$  (C).

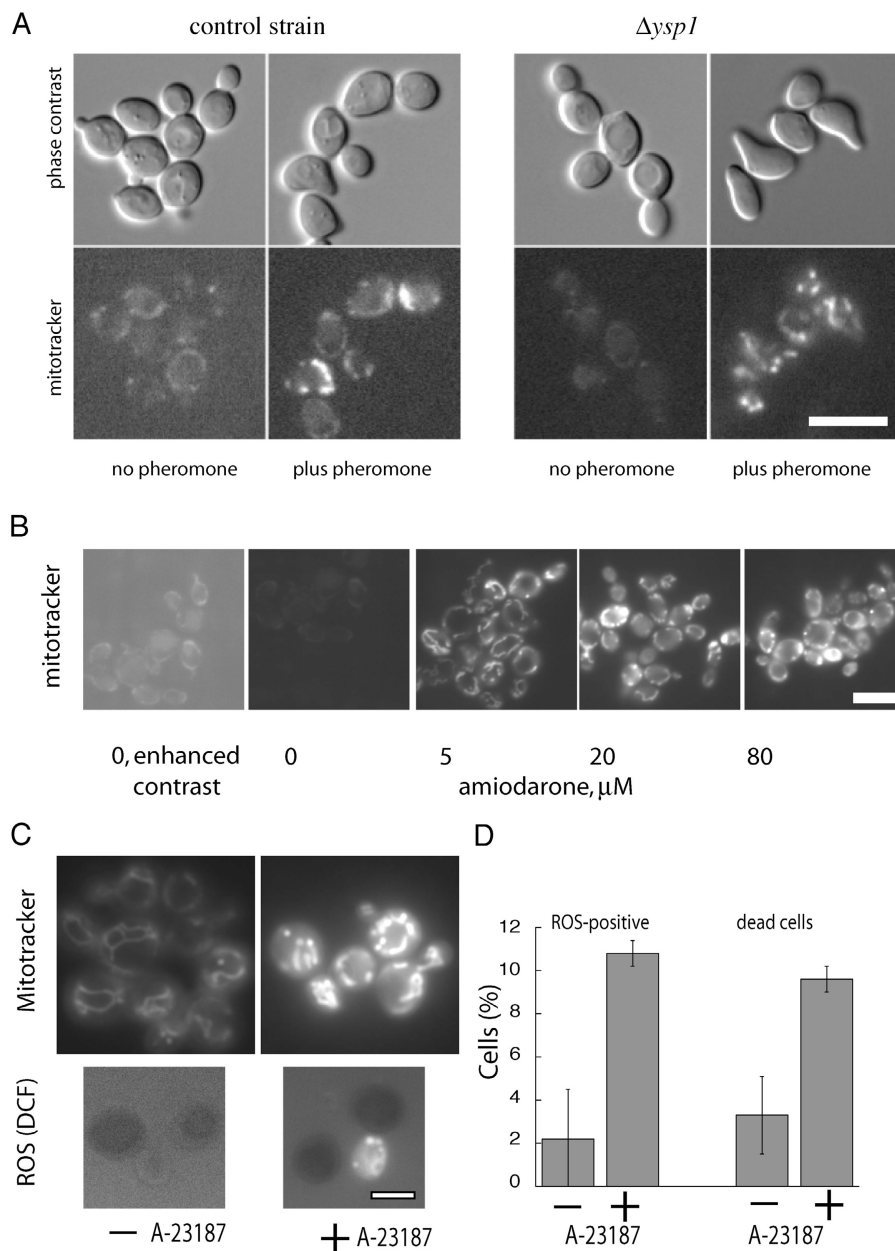


### Effects of amiodarone on respiration

As the mitochondrial respiratory chain and energy coupling inhibitors strongly affect the amiodarone-induced death, we have tested the effect of amiodarone on yeast respiration. We found that respiration of *S. cerevisiae* cells growing on galactose and raffinose is relatively slow. Its rate cannot be further lowered by the  $\text{H}^+$ -ATP-synthase inhibitor oligomycin and is stimulated by uncoupler FCCP (1  $\mu\text{M}$ ) only slightly, the effect being transient (Fig. 2 A). Much higher (10  $\mu\text{M}$ ) FCCP was necessary to obtain a high and steady respiration rate. Myxothiazol (Fig. 1 A) as well as antimycin A and KCN (not depicted) completely arrested respiration. Addition of low (2–10  $\mu\text{M}$ ) concentrations of amiodarone was found to (a) inhibit respiration in the presence of oligomycin and (b) stimulate it in the presence of 1  $\mu\text{M}$  FCCP in a myxothiazol-sensitive fashion (Fig. 2, A and B). High (40–80  $\mu\text{M}$ ) amiodarone caused transient stimulation of uncoupled respiration, followed by its strong inhibition (Fig. 2 A). The latter effect can be explained by the fact that some of the respiratory enzymes are arrested by these amounts of amiodarone (see Discussion). As for the low amiodarone, it seems to increase energy coupling and the maximal respiratory rate. The latter should be upstream of cytochrome oxidase because in the myxothiazol-treated cells, uncoupled oxidation of TMPD and ascorbate donating electrons directly to cytochrome oxidase was not stimulated by amiodarone (unpublished data).

It seems likely that a  $\text{Ca}^{2+}$ -induced activation of an external (noncoupled) NADH dehydrogenase on the outer surface of the inner mitochondrial membrane is a primary reason for amiodarone-induced burst in respiration. Such an activation was described for a homologous enzyme of plant mitochondria (Rasmusson and Moller, 1991). In our hands, addition of  $\text{Ca}^{2+}$  to isolated yeast mitochondria resulted in a two- to threefold stimulation of oxidation of external NADH, oxidation of pyruvate and malate being unaffected (unpublished data). As for energy coupling increase, it might also be related to cytosolic  $[\text{Ca}^{2+}]$  rise because in yeast, unlike animals, a nonspecific pore in the inner mitochondrial membrane is inhibited by extramitochondrial  $\text{Ca}^{2+}$  (Perez-Vazquez et al., 2003). Consistent with this reasoning, all of the effects of low amiodarone on respiration proved to be cell specific. They were absent in isolated yeast mitochondria, which show oligomycin inhibition and FCCP stimulation independently of amiodarone addition (Fig. 2 C). However, the inhibitory action of high amiodarone could also be reproduced on isolated mitochondria if pyruvate and malate (but not external NADH) were used as substrates (unpublished data).

Thus, our data suggest that, without amiodarone, respiration in the actively glycolysing yeast cells used in our experiments was partially uncoupled and its rate was limited by factors other than energy coupling. Addition of amiodarone to the cells shifts control of respiration from the substrate dehydrogenases or respiratory chain enzymes to the level of energy coupling.



**Figure 3. The phomone- and amiodarone-induced increase in mitochondrial membrane potential in the yeast cells is  $\text{Ca}^{2+}$  mediated.** Mitotracker orange was used for the  $\Delta\Psi$ -dependent staining of mitochondria. (A) 0.1 mg/ml of the pheromone ( $\alpha$ -factor). (B) Numbers below panels show amiodarone concentrations ( $\mu\text{M}$ ). (C and D)  $\text{Ca}^{2+}$  ionophore A23187 triggers  $\Delta\Psi$  increase, ROS accumulation (C), and cell death (D). Error bars represent SD of three independent experiments. Bars, 10  $\mu\text{m}$ .

### An increase in membrane potential and ROS production during amiodarone-induced PCD

Is respiration in the amiodarone-treated yeast coupled to generation of the mitochondrial membrane potential? Apparently yes, because an uncoupler (1  $\mu\text{M}$  FCCP) discharging  $\Delta\Psi$  strongly stimulated this respiration (Fig. 2, A and B). Such a conclusion was confirmed by measuring  $\Delta\Psi$  in the yeast cells. To monitor  $\Delta\Psi$  enhancement, Mitotracker orange was used. This probe irreversibly stains mitochondria in a  $\Delta\Psi$ -dependent fashion (the staining is brighter when  $\Delta\Psi$  is high). As shown in Fig. 3 B, Mitotracker staining could be imaged without amiodarone at the enhanced contrast only. However, 5  $\mu\text{M}$ , and especially 20 or 80  $\mu\text{M}$ , amiodarone initiated a strong Mitotracker staining. Importantly, 5-min treatment with 80  $\mu\text{M}$  amiodarone is sufficient to induce a  $\Delta\Psi$  rise (Fig. 4). A

similar (although slower)  $\Delta\Psi$  increase was observed when  $\alpha$ -factor was added instead of amiodarone (Fig. 3 A). It was suggested that the abnormally elevated  $\Delta\Psi$  directly drives the formation of ROS, and these ROS are the necessary step in development of the apoptotic cascade (Skulachev, 1996a; Korsunov et al., 1997; Davermann et al., 2002). To test this hypothesis, we monitored kinetics of the formation of ROS after amiodarone addition. Similar to pheromone (Severin and Hyman, 2002), amiodarone treatment strongly enhanced the ROS level in the yeast cells (Figs. 4 and 5). Moreover, it was found that the  $\Delta\Psi$  increase takes place earlier than the visible ROS accumulation (Fig. 4). Importantly, added antioxidants (NAC or  $\alpha$ -tocopherol) drastically increased the survival after the pheromone or amiodarone treatments (Fig. 1 and Table I), indicating that ROS formation is a necessary step in the onset of the cell death process. Again, as in the case of  $\Delta\Psi$ , the

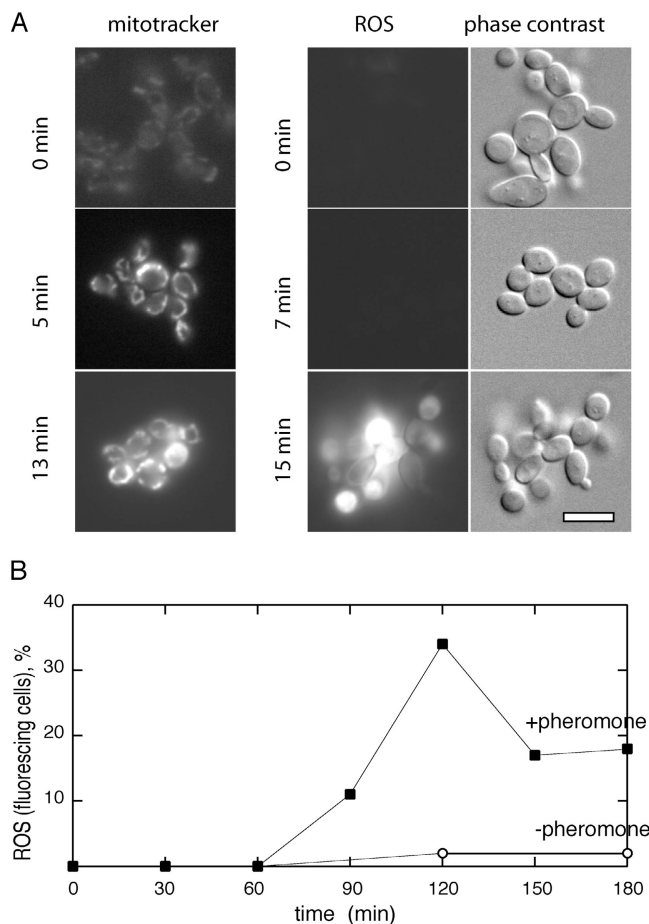


Figure 4. **The time courses of amiodarone- and pheromone-induced increases in  $\Delta\Psi$  and ROS.** (A)  $\Delta\Psi$  and ROS after the addition of 80  $\mu\text{M}$  amiodarone. (B) ROS increase induced by 0.1 mg/ml  $\alpha$ -factor. The  $\text{H}_2\text{DCF-DA}$  (50  $\mu\text{M}$ ) staining was used as a probe for ROS. Bar, 10  $\mu\text{M}$ .

pheromone effect on ROS developed much slower than that of amiodarone (Fig. 4, compare A and B). Similar relationships were revealed by others when intracellular  $\text{Ca}^{2+}$  was monitored. According to Ohsumi and Anraku (1985), the major pheromone-induced rise in  $[\text{Ca}^{2+}]$  takes 2 h, whereas a similar effect of amiodarone is observed in 1 min (Courchesne and Ozturk, 2003; Gupta et al., 2003).

Is the rise of intracellular  $\text{Ca}^{2+}$  concentration sufficient to trigger the cell death cascade? To answer this question, we attempted to induce the rise of cytosolic  $\text{Ca}^{2+}$  by adding ionophore A23187 to the medium. We found that although qualitatively the A23187 effect (monitored by ROS and cell death) was similar to those of pheromone and amiodarone, its rate was rather slow (Fig. 3, C and D). Possibly the relatively weak ROS accumulation and low cell death rate induced by A23187 were due to its low efficiency in increasing cytosolic  $[\text{Ca}^{2+}]$ . Indeed, we found that amiodarone induced much faster intracellular  $[\text{Ca}^{2+}]$  rise compared with A23187 (Fig. 1 G).

To show that mitochondrial  $\Delta\Psi$  is really required for the ROS formation, we prevented a  $\Delta\Psi$  increase by adding FCCP. As expected, both  $\Delta\Psi$  and ROS increases were abolished. For such effects, 0.4  $\mu\text{M}$  FCCP proved to be sufficient (Fig. 5). Importantly, 0.4  $\mu\text{M}$  FCCP also elevated the cell survival after the

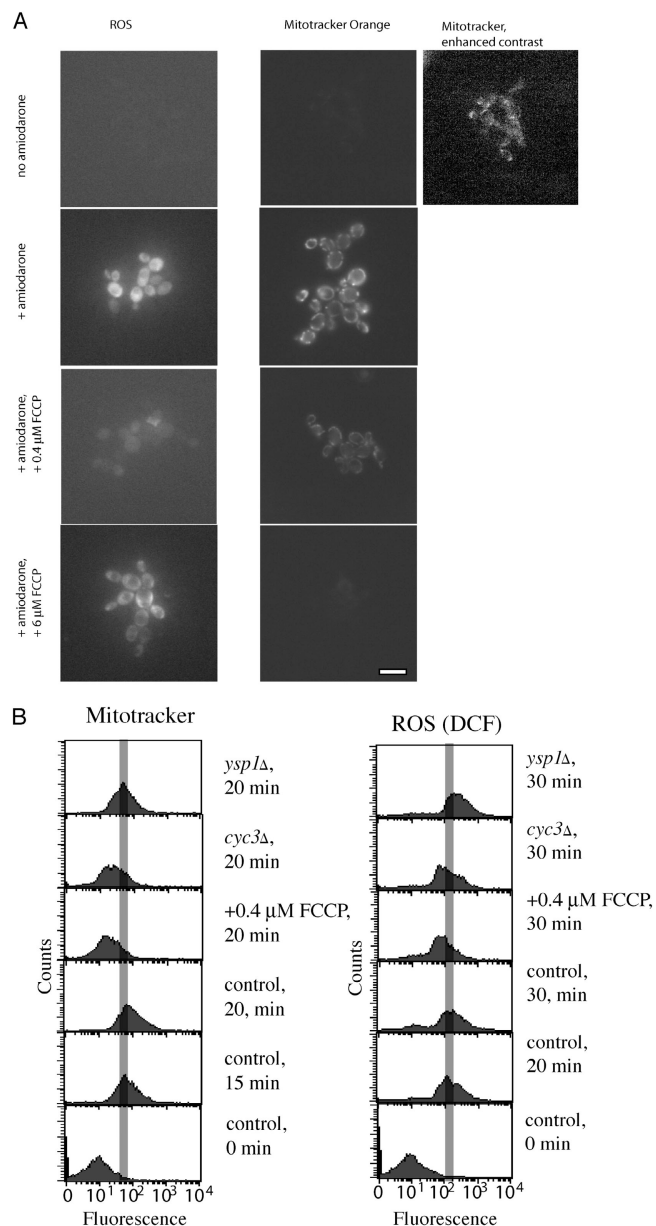


Figure 5. **Effects of a protonophorous uncoupler of oxidative phosphorylation FCCP on the amiodarone-induced  $\Delta\Psi$  (Mitotracker orange) and ROS ( $\text{H}_2\text{DCF-DA}$ ) increases.** Mitotracker orange and  $\text{H}_2\text{DCF-DA}$  were revealed by microscopy (A) and FACS (B). 80  $\mu\text{M}$  amiodarone was added to all samples at time zero. Bar, 10  $\mu\text{M}$ .

amiodarone treatment (Fig. 1 B), indicating that a  $\Delta\Psi$  increase and related ROS production are not side effects but necessary steps in the cell death cascade.

High (6  $\mu\text{M}$ ) FCCP induced an increase in ROS with no  $\Delta\Psi$  observed (Fig. 5), with a negative effect on the survival (Fig. 1 B). The effect is not specific to FCCP because the same was observed when FCCP was replaced by another protonophorous uncoupler, SF6847 (3,5-di(*tert*)butyl-4-hydroxybenzylidene malononitrile; unpublished data).

The low FCCP-sensitive ROS formation might be explained by generation of  $\text{O}_2^-$  in the Q-cycle (for discussion, see Fig. 9). To verify this hypothesis, we tested the effects of myxothiazol and antimycin A, two inhibitors that block two

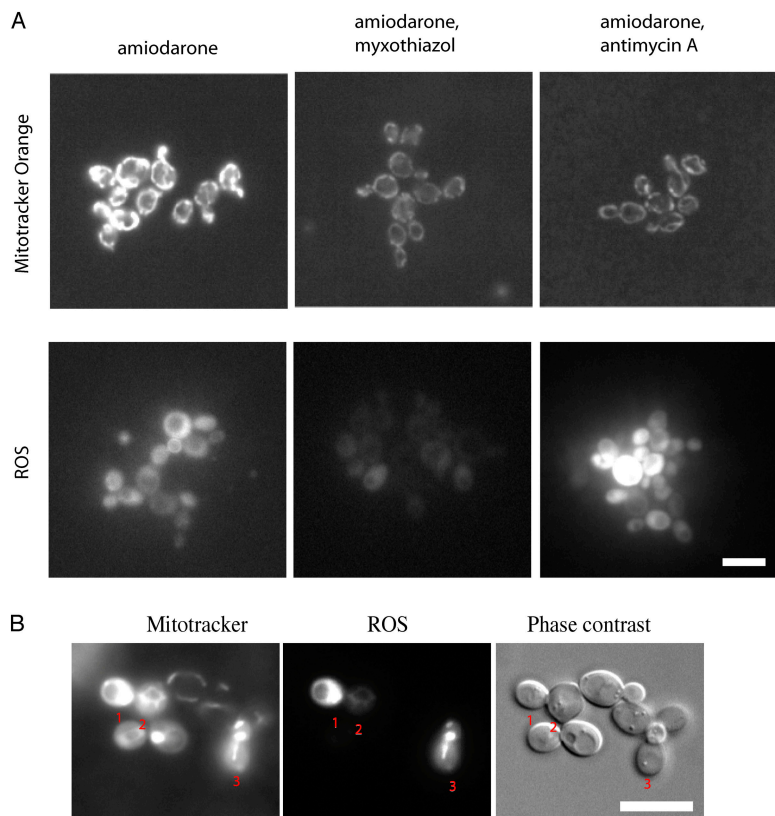


Figure 6. **The cellular effects of amiodarone are mediated by mitochondria.** (A) Effects of the Q-cycle inhibitors myxothiazol (2  $\mu\text{M}$ ) and antimycin A (10  $\mu\text{M}$ ) on the amiodarone-induced increase in  $\Delta\Psi$  and ROS (Mitotracker orange and  $\text{H}_2\text{DCF-DA}$ , respectively). (B) Colocalization of the Mitotracker orange and  $\text{H}_2\text{DCF-DA}$  staining inside the yeast cell (numbered 1–3). 80  $\mu\text{M}$  amiodarone was always present. Bar, 10  $\mu\text{m}$ .

different stages of the Q-cycle (centers *o* and *i*, respectively). As expected, the inhibitors abolished  $\Delta\Psi$ , oppositely affecting the ROS level. Namely, myxothiazol arrested the ROS increase, whereas antimycin A increased it (Fig. 6 A). Additionally, isolated yeast mitochondria were shown to produce  $\text{H}_2\text{O}_2$  at rates of 460 nM/min/mg of protein and 130 nM/min/mg of protein with and without antimycin A, respectively. Without antimycin A, FCCP proved to be inhibitory for the  $\text{H}_2\text{O}_2$  production (unpublished data).

Finally, the colocalization of fluorescent signals of Mitotracker orange and DCF confirmed that mitochondria are responsible for amiodarone-induced ROS production (Fig. 6 B).

#### Amiodarone-induced Ysp1-dependent fragmentation of mitochondrial filaments

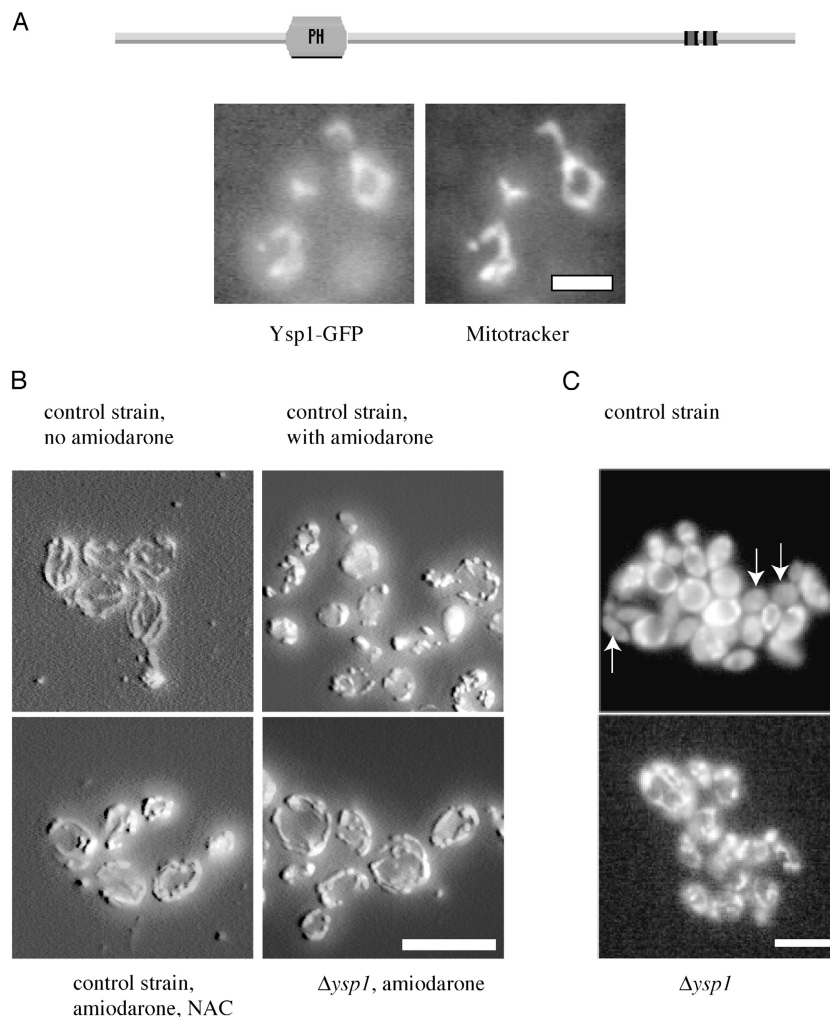
Fragmentation of mitochondrial filaments (“the thread-grain transition”) is a typical marker of apoptosis in animals (for review see Skulachev et al., 2004). Recently it was shown that mitochondria fission is a necessary step in acetic acid- or  $\text{H}_2\text{O}_2$ -induced yeast cell death (Fannjiang et al., 2004). We have found that the same is true for our experimental system of yeast cell death. A genetic screen for proteins involved in the pheromone-induced cell death allowed us to identify a novel protein required for this process. To screen for genes involved in the cell death cascade, transposon-mutagenized yeast (Burns et al., 1994) were treated with high doses of the pheromone and the surviving cells were grown into colonies. We reasoned that the cell survival could be either due to (a) specific loss of a protein involved in the death cascade, (b) loss of sensitivity to the pheromone at a stage common to the mating and death cas-

ades (sterile phenotype), or (c) loss of functional mitochondria. To eliminate the latter two possibilities, we tested the ability of the surviving cells to mate with the cells of opposite sexual type and to grow on a nonfermentable carbon source (see the online supplemental material, available at <http://www.jcb.org/cgi/content/full/jcb.200408145/DC1>).

We identified a gene, the deletion of which did not reduce the sensitivity of the mutant to low doses of the pheromone, did not prevent the mutant from growing on glycerol (not depicted), and significantly reduced cell death after the treatment with high pheromone concentration (Fig. 1 C). The gene in question (YHR 155W) proved to be an ORF with no clear homologies to genes of higher organisms. The protein sequence predicted the existence of a pleckstrin homology domain and two transmembrane domains (Fig. 7 A). We called the protein Ysp1 (yeast suicide protein 1). The large-scale screen for the localization of GFP-fusion proteins (Huh et al., 2003) has shown that Ysp1 is a mitochondrial protein. We confirmed that finding by imaging Mitotracker orange in the cells expressing Ysp1-GFP (Fig. 7 A). Similar images were obtained by immunofluorescent microscopy of yeast carrying Ysp1-Myc (unpublished data).

As is shown in Fig. 7 B, amiodarone causes fragmentation of mitochondrial filaments, the main mitochondrial structures in *S. cerevisiae* under the growth conditions used, to small spherical mitochondria. This process was strongly suppressed in the *ysp1* deletion mutant. In contrast, mitochondrial  $\Delta\Psi$  rise and the ROS level increase (Fig. 5 B) proved to be Ysp1 insensitive. Thus, Ysp1 seems to operate at the stage of the thread-grain transition rather than of the  $\Delta\Psi$  increase or the ROS elevation. In wild-type cells, ROS were essential for the

**Figure 7. Ysp1 localization and function.** (A) Colocalization of the Mitotracker orange and Ysp1-GFP inside the yeast cell. Bar, 5  $\mu\text{m}$ . In the top part of the figure, a domain structure of Ysp1 is shown; it contains predicted pleckstrin homology (PH) domain and two predicted transmembrane domains (on the scheme, in black). (B) Ysp1 is required for the thread-grain transition of mitochondrial filaments at a late stage of the amiodarone-induced suicide cascade. To image the mitochondrial network in the individual cells, 20 optical slices per field of view with 1.5- $\mu\text{m}$  increments were collected and the resulting Z-stack was collapsed into a single image. Bar, 10  $\mu\text{m}$ . (C) Ysp1 deletion prevents the amiodarone-triggered mitochondria de-energization. Cells with a dim diffuse Mitotracker orange staining (arrows) are present in the control strain but not in the mutant. Bar, 10  $\mu\text{m}$ .



thread-grain transition, because quenching of ROS by NAC prevented fragmentation of mitochondrial filaments (Fig. 7 B).

The stage of the apoptotic process in animal cells that follows the thread-grain transition may be the opening of the permeability transition pore in the inner mitochondrial membrane and, as a consequence, the collapse of  $\Delta\Psi$  (Skulachev et al., 2004). We checked whether or not the loss of  $\Delta\Psi$  also happens in our system. As shown in Fig. 7 C, at a late stage of the amiodarone-induced death, yeast cells appear that do not accumulate Mitotracker orange in their mitochondria (in this case, the  $\Delta\Psi$  probe was added 15 min after amiodarone). Importantly, mitochondria de-energization did not occur in the  $\Delta yap1$  (Fig. 7 C). In the wild-type yeast, the effect proved to be arrested by antioxidants or oligomycin (unpublished data).

Thus, our data show that the thread-grain transition is a necessary event in the pheromone/amiodarone-induced cell death cascade occurring downstream of elevated  $\Delta\Psi$ -driven ROS formation, and Ysp1 is required for execution of the transition.

## Discussion

The aforementioned data, together with our previous observations (Severin and Hyman, 2002), can be summarized by a

scheme of the pheromone-induced programmed death shown in Fig. 8. The scheme assumes that a high pheromone level results in such a strong activation of the well known MAPK cascade involved in the pheromone-induced mating response (stages 2–5) that the  $\text{Ca}^{2+}$  concentration in cytosol appears to be above a threshold value required to trigger a specific chain of events in mitochondria (stages 6–10), eventually causing the cell death (stage 11). As for amiodarone, it operates in such a way that the cytosolic  $[\text{Ca}^{2+}]$  increase arises with no MAPK cascade involved. High  $\text{Ca}^{2+}$  is assumed to activate mitochondria in two ways. It stimulates activity of certain respiratory enzymes and increases coupling of respiration and energy conservation. As a result,  $\Delta\Psi$  increases and becomes the factor limiting the respiration rate. The latter conclusion is drawn from the fact that 1  $\mu\text{M}$  FCCP stimulates and oligomycin inhibits respiration when amiodarone is added.

The rise of cytosolic  $[\text{Ca}^{2+}]$  is the crucial event in the suggested scheme. Indeed, both pheromone (Ohsumi and Anraku, 1985) and amiodarone (Gupta et al., 2003; Courchesne and Ozturk, 2003) were shown to initiate a strong increase in the cytosolic  $[\text{Ca}^{2+}]$ . We confirmed these observations (Fig. 1 G). We also showed that  $[\text{Ca}^{2+}]$  stimulates mitochondrial outer NADH dehydrogenase (the same was shown in plants; Ras-



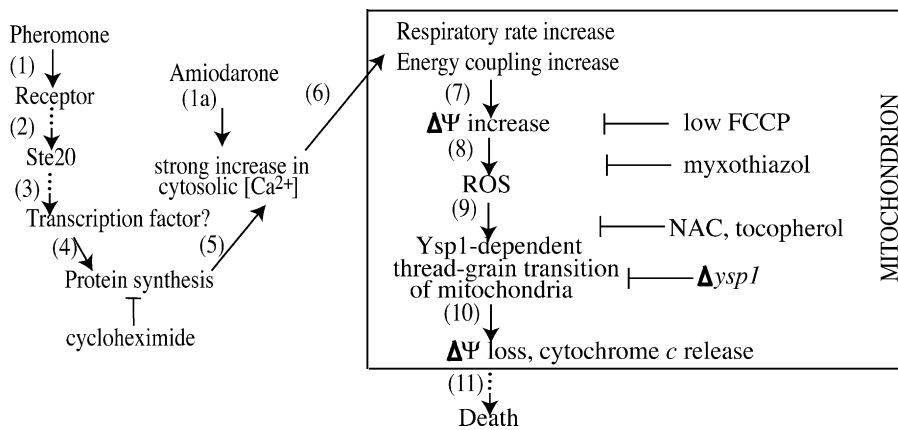


Figure 8. Proposed scheme of the programmed death cascade initiated by the pheromone and amiodarone. See the text for explanations.

musson and Moller, 1991). This may explain the amiodarone-induced burst of respiration. As for an increase in energy coupling,  $\text{Ca}^{2+}$  might be competent in such an effect by inhibiting, e.g., the nonselective pore in yeast mitochondria (Perez-Vazquez et al., 2003). In our hands,  $\text{Ca}^{2+}$  ionophore A23187 induced mitochondria hyperpolarization and, in a fraction of cells, ROS accumulation and death.

Importantly, an increase in mitochondrial  $\Delta\Psi$  was described to accompany several types of animal apoptosis (Banki et al., 1999; Li et al., 1999; Vander Heiden et al., 1999; Gottlieb et al., 2000; Sanchez-Alcazar et al., 2000; Scarlett et al., 2000; Matarrese et al., 2001; Piacentini et al., 2002; Gergely et al., 2002; Nagy et al., 2003). In yeast, such a phenomenon was shown to be inherent in the cell death induced by acetic acid (Ludovico et al., 2002) or by expression of Bax (Gross et al., 2000). In both of these cases, a  $\Delta\Psi$  increase was followed by strong elevation of the ROS levels.

At stage 8 (Fig. 8), an elevation of  $\Delta\Psi$  increases ROS production. In the intact respiratory chain of animal mitochondria, oxidizing succinate in stage 4, there are two major sites of  $\text{O}_2^-$  generation: (1) the reverse electron transfer from  $\text{CoQH}_2$  to  $\text{O}_2$  via complex I and (2) reduction of  $\text{O}_2$  by  $\text{CoQ}^-$  in center *o* of complex III (~80% and 15% of ROS production, respectively; Korshunov et al., 1997). The former mechanism is absent in *S. cerevisiae* lacking complex I, but the complex III-linked  $\text{O}_2^-$  generation is still possible (Fig. 9). Experimental data are in excellent agreement with the assumption that it is complex III that generates ROS in the *S. cerevisiae* mitochondria. First, a  $\Delta\Psi$  rise caused by the amiodarone treatment resulted in stimulated ROS production, whereas simultaneous adding of FCCP entails both a  $\Delta\Psi$  and ROS decrease (Fig. 5). Additionally, the myxothiazol inhibition of the Q cycle at stage of  $\text{CoQ}^-$  formation (center *o*) decreased both  $\Delta\Psi$  and ROS, whereas the antimycin A inhibition at stage of heme  $b_h$  oxidation (center *i*) decreased  $\Delta\Psi$  and increased ROS (Fig. 6). Exactly these relationships were predicted by the Fig. 9 scheme and have been previously demonstrated on isolated rat heart mitochondria (Korshunov et al., 1997). Consistent with experiments on the intact cells, antimycin A strongly stimulated the  $\text{H}_2\text{O}_2$  production by isolated yeast mitochondria.

Importantly, water- and lipid-soluble antioxidants (NAC and  $\alpha$ -tocopherol, respectively) increased survival of yeast, in-

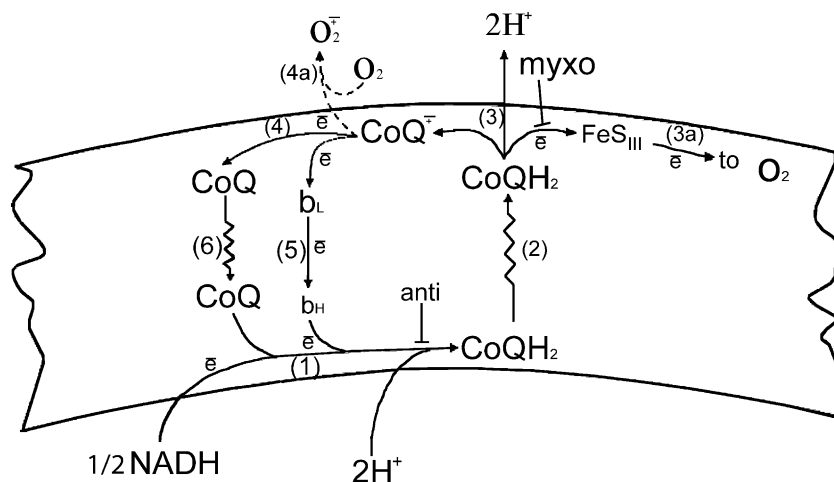
dicating that ROS are intermediates of the death program rather than its byproducts.

The scheme on Fig. 8 suggests that formation of ROS in mitochondria initiates the mitochondrial thread-grain transition and de-energization (Fig. 8, stage 9). Such a process was demonstrated in apoptotic animal mitochondria (for review see Skulachev et al., 2004). It proved to be a necessary step in various types of apoptosis (Frank et al., 2001), including yeast PCD induced by acetic acid or  $\text{H}_2\text{O}_2$  (Fannjiang et al., 2004). Just at this step, a novel protein of the yeast programmed death cascade, Ysp1, seems to be involved. Ysp1 has no effect on respiration,  $\Delta\Psi$ , and ROS increases. However, decomposition of mitochondrial filaments did not occur in the  $\Delta ysp1$  mutant (Fig. 7 B). In line with the aforementioned reasoning, an overexpression of Ysp1 under the GAL promoter induces fragmentation of mitochondrial filaments (unpublished data).

The final step of the mitochondria-related events (Fig. 8, stage 10) consists in their de-energization so that Mitotracker orange fails to stain any yeast cell organelles (Fig. 7 C). Again, this event is not observed in the  $\Delta ysp1$  mutant. De-energization was accompanied by a release of cytochrome *c* from mitochondria to cytosol (Fig. 1 D).

One might speculate that the decomposition of mitochondrial filaments in yeast occurs by the same mechanism as in mammalian cells, i.e., by opening of a pore in the inner mitochondrial membrane. This opening is known to entail swelling of the matrix, disruption of the outer membrane, and a release of cytochrome *c* and other proapoptotic proteins from the mitochondrial intermembrane space to cytosol. In mammalian cells, it is an obligatory step of the mitochondria-mediated apoptosis (for review see Skulachev, 1996b). In yeast, Ludovico et al. (2002) have reported that the acetic acid-induced programmed death of *S. cerevisiae* is accompanied by release of cytochrome *c* from mitochondria to cytosol. Mutation in the cytochrome *c* heme lyase partially rescued the cells from death. Additionally, data obtained in our group (Severin and Hyman, 2002) show that a mutant lacking both *c*-type cytochromes survived in the presence of a lethal  $\alpha$ -factor concentration in spite of the burst of ROS formation. The same effect was now observed with amiodarone. This might be interpreted as an indication to direct participation of cytochrome *c* in the yeast programmed death like that in animal apoptosis. Interestingly, the cascade of the

Figure 9. **Q-cycle in the inner mitochondrial membrane of *S. cerevisiae*.** (1) Reduction of CoQ by two electrons coming from a noncoupled NADH-CoQ reductase and heme  $b_H$ , followed by consumption of  $2H^+$  from mitochondrial matrix. This occurs near the inner surface of the inner mitochondrial membrane (center  $i$ ). (2) Diffusion of CoQH<sub>2</sub> from center  $i$  to center  $o$  localized near the outer membrane surface. (3) One-electron oxidation of CoQH<sub>2</sub> by the nonheme FeS cluster of Complex III (FeS<sub>III</sub>). Here, reduced FeS<sub>III</sub> and anion-radical CoQ<sup>•-</sup> are formed.  $2H^+$  are released to the intermembrane space. (3a) FeS<sub>III</sub> is oxidized resulting in an electron transfer to O<sub>2</sub> via cytochromes  $c_1$ ,  $c$ , and cytochrome oxidase, which forms H<sub>2</sub>O. (4) CoQ<sup>•-</sup> oxidation by heme  $b_L$ . (4a) Alternatively, CoQ<sup>•-</sup> can be oxidized by O<sub>2</sub> in a O<sub>2</sub><sup>•-</sup>-generating fashion. (5) Transmembrane electron transfer from  $b_L$  to  $b_H$ . (6) The CoQ diffusion back to center  $i$ . Operation of Q-cycle results in generation of  $\Delta\Psi$  and  $\Delta pH$  (matrix being negatively charged and alkalized).  $\Delta\Psi$  inhibits the  $b_L \rightarrow b_H$  electron transfer and, hence, stimulates alternative CoQ<sup>•-</sup> oxidation by O<sub>2</sub> and generation of O<sub>2</sub><sup>•-</sup>. Uncoupler discharges  $\Delta\Psi$  by passive H<sup>+</sup> influx from the intermembrane space to matrix and, as a result, inhibits the ROS generation. Myxothiazol (myxo) also suppresses ROS generation by preventing CoQH<sub>2</sub> oxidation to CoQ<sup>•-</sup> in center  $o$ . As for antimycin A (anti), it stimulates ROS production by inhibiting oxidation of  $b_H$  and, as a consequence, of  $b_L$ .



pheromone-induced programmed death of yeast resembles to some degree that initiated by tumor necrosis factor  $\alpha$  in HeLa cells or by Fas-ligand in T cells. In the latter case, an extracellular ligand combines with a receptor on the plasma membrane and activates MAPK cascade leading to mitochondrial hyperpolarization and ROS production (Nagy et al., 2003). Similar to  $\alpha$ -factor, Fas-ligand-induced activation of the MAPK cascade can either lead to cell proliferation or cell death, depending on the ligand amount (for review see Nagy et al., 2003).

One difference between the two models is that in yeast PCD protein synthesis is required, whereas it is not necessary as a rule for mammalian apoptosis. Apparently, in multicellular organisms, the suicide apparatus is usually ready to be activated, whereas, in unicellular ones, it requires de novo production of some proteins. These proteins are involved upstream of the amiodarone-sensitive step because the cell killing by this agent is protein synthesis independent.

Another difference between the two models is that although in mammalian cells mitochondria are always active in energy production, in glycolyzing yeast mitochondria “switch on” only during apoptosis. Our data show that the switching on occurs by both the activation of respiration and an increase in energy coupling. Probably the existence of the Ca<sup>2+</sup>-activated NADH dehydrogenase and Ca<sup>2+</sup>-inhibited, nonselective pore in yeast mitochondria and their absence in mammals partly explains this difference between the two models. Remarkably, the suicide of aging yeast cells is, like that of the pheromone- or amiodarone-treated ones, accompanied by activation of respiration (Jazwinski, 2002). Apparently, the yeast life strategy dictates that yeast cells, to obtain energy, use glycolysis if sugars are in excess. As for respiration, it is low and essentially uncoupled, being apparently used in some nonenergetic functions like scavenging of glycolytic products, decrease of intercellular [O<sub>2</sub>], etc. Such a modus vivendi allows cells to synthesize ATP and at the same time to minimize the “oxygen danger.” In contrast, when a suicide program is initiated, respiration becomes tightly coupled and its

maximal electron transfer capacity strongly increases to produce ROS at high rate in the middle part of the respiratory chain (Fig. 9, Q-cycle).

The programmed death looks quite reasonable if we consider malfunctioning cells of a multicellular organism. As for an entire organism, the possibility of the existence of a death program has been discussed since the second half of the nineteenth century when Alfred Russell Wallace and August Weismann put forward such an idea (Weismann, 1889). Now, programmed death is documented in unicellular organisms (i.e., bacteria [for reviews see Ameisen, 1996; Raff, 1998; Lewis, 2000; Engelberg-Kulka et al., 2004] and yeast [for reviews see Jin and Reed, 2002; Madeo et al., 2002a; Skulachev, 2002; Weinberger et al., 2003; Breitenbach et al., 2003; Fabrizio et al., 2004] and some multicellular organisms (Skulachev, 2003). To distinguish the organismal biochemical suicide from similar events occurring at suborganismal levels, the programmed death of an organism was defined as “phenoptosis” (Skulachev, 1999). Its biological significance for yeast undergoing sexual reproduction could be in the killing of cells that fail to mate. Perhaps, high pheromone concentrations appearing in clefts between adhered haploid cells kill these cells if they cannot, for a long time, convert to the pheromone-resistant diploids (Severin and Hyman, 2002; Skulachev, 2002). Moreover, even if the suicide mechanism does not discriminate the “weak” and the “strong” cells, it still might be useful for the community: random elimination of organisms could accelerate the change of generations and thus the finding of new, useful traits (Weismann, 1889).

## Materials and methods

### Strains and growth conditions

The strains used in this study, namely, TH40 (W303, Mat a), TH923 (*cmd1-66*; original strain provided by T. Davis, University of Washington, Seattle, WA), TH927 (*rho<sup>0</sup>*), TH1003 (*cyc3::URA33*; original strain provided by F. Sherman, School of Medicine and Dentistry, University of Rochester, Rochester, NY), FS1 (*yp1::HIS*), FS5 (*YSP1-GFP::*

HIS), and FS6 (*GAL::TRP, YSP1-GFP::HIS*), are all derivatives of W303. Yeast extract with peptone (Rose et al., 1990) was supplemented with either 2% glucose ( $\alpha$ -factor experiments) or either 2% raffinose or 2% galactose and 2% raffinose (amiodarone experiments). Yeasts were typically grown to the density  $2 \times 10^6$  cells/ml before the  $\alpha$ -factor or amiodarone treatment.

#### Assays for $\Delta\Psi$ , ROS, cell survival, and intracellular $\text{Ca}^{2+}$

Mitochondrial  $\Delta\Psi$  was visualized with Mitotracker orange (0.1  $\mu\text{g/ml}$ ; Molecular Probes). Intracellular ROS were revealed with 50  $\mu\text{M}$  dichlorofluorescein diacetate ( $\text{H}_2\text{DCF-DA}$ ; Sigma-Aldrich).

Cell survival for amiodarone experiments was determined by incubating the cells at 30°C in the shaker, followed by plating an aliquot on solid media and counting the colonies the next day. The percentage of cell survival was calculated based on counting the cells under the microscope before plating. Mitotracker orange staining was photographed after 10–15 min, and  $\text{H}_2\text{DCF-DA}$  after 20–30 min following amiodarone addition. Photographs were taken at RT with a camera (model C4742-95; Hamamatsu) mounted on an Axioplan 2 (Carl Zeiss Microimaging, Inc.). A 63 $\times$  objective lens was used. At least three experiments were performed for each treatment. In the  $\alpha$ -factor experiments, the dead cells were visualized by Methylene blue (Sigma-Aldrich) or propidium iodide.

Immunofluorescent staining was performed as described in Piatti et al. (1996) using a 1:200 dilution of anti-cytochrome *c* antibody (clone 6H2.B4; BD Biosciences).

For measurements of intracellular  $\text{Ca}^{2+}$ , cells were loaded overnight with 3  $\mu\text{M}$  Fluo-3/AM (Sigma-Aldrich), diluted to OD 0.5 the next morning in fresh media containing the same concentration of the dye, and shaken for 2–3 h. Cells were washed twice in water, A23187 (50  $\mu\text{M}$ , Sigma-Aldrich), amiodarone, or buffer controls were added and the cells were photographed under the microscope.

Total yeast DNA was prepared as described previously (Koch et al., 1996) with modifications (see online supplemental material).

#### TUNEL

TUNEL was performed using in situ Cell Death Detection Kit and TMR red (Roche Diagnostics GmbH). Cells were fixed and digested with zymolase as described in Piatti et al. (1996), with the exception that the zymolase treatment was performed for 2 h at 37°C. Triton X-100 was added to 0.2% for 5 min, protoplasts were spun at 5,000 rpm for 5 min, resuspended in 50  $\mu\text{l}$  of TUNEL labeling mix, and incubated at 37°C for 1 h. Then, the protoplasts were washed twice and finally resuspended in 20  $\mu\text{l}$  of PBS, Hoechst dye was added to 1  $\mu\text{g/ml}$  to visualize DNA, and the protoplasts were analyzed by microscopy.

#### Respiration and $\text{H}_2\text{O}_2$ generation

The cell or mitochondrial respiration was measured using standard polarographic techniques with a Clark-type electrode. Incubation medium for cells contained 50 mM  $\text{KH}_2\text{PO}_4$ , pH 5.5, and 0.05% glucose. In some experiments, the YPGalRaf medium was used. Incubation medium for mitochondria contained 0.6 M mannitol, 10 mM Tris-HCl, 2 mM potassium phosphate, pH 7.4, 4 mM pyruvate, and 1 mM malate. Mitochondria were prepared essentially as described previously (Bazhenova et al., 1998).

$\text{H}_2\text{O}_2$  generation was measured fluorimetrically by means of HRP and Amplex red. Incubation mixture contained 0.6 M mannitol, 10 mM Tris-HCl, 2 mM potassium phosphate, pH 7.4, 1.2  $\mu\text{M}$  Amplex red, and 0.05 mg/ml peroxidase.

#### Online supplemental material

The online material presents the description of the screen for genes involved in the pheromone-induced cell death cascade and our protocol for total yeast DNA purification. The online supplemental material is available at <http://www.jcb.org/cgi/content/jcb.200408145/DC1>.

We are grateful to Mrs. E.A. Smirnova and Dr. A. Pustovidko for participation in some experiments and Dr. R.A. Zvyagilskaya for useful advice. We thank L. Pelletier, C. Walch-Solimena, and K. Poole for critical reading of the manuscript.

This study was supported by grants RBO-863 of the Kerr Program, the Ludwig Institute for Cancer Research, and grant "Leading Scientific Schools" 1710.2003.04 from the Ministry of Education and Science, Russian Federation.

Submitted: 24 August 2004

Accepted: 30 November 2004

## References

- Ameisen, J.C. 1996. The origin of programmed cell death. *Science*. 272:1278–1279.
- Banki, K., E. Hutter, N.J. Gonchoroff, and A. Perl. 1999. Elevation of mitochondrial transmembrane potential and reactive oxygen intermediate levels are early events and occur independently from activation of caspases in Fas signaling. *J. Immunol.* 162:1466–1479.
- Bazhenova, E.N., Y.I. Deryabina, O. Eriksson, R.A. Zvyagilskaya, and N.E. Saris. 1998. Characterization of a high capacity calcium transport system in mitochondria of the yeast *Endomyces magnusii*. *J. Biol. Chem.* 273:4372–4377.
- Blanchard, F., M.E. Rusiniak, K. Sharma, X. Sun, I. Todorov, M.M. Castellano, C. Gutierrez, H. Baumann, and W.C. Burkans. 2002. Targeted destruction of DNA replication protein Cdc6 by cell death pathways in mammals and yeast. *Mol. Biol. Cell.* 13:1536–1549.
- Breitenbach, M., F. Madeo, P. Laun, G. Heeren, S. Jarolim, K.-U. Fröhlich, S. Wissing, and A. Pichova. 2003. Yeast as a model for ageing and apoptosis research. In *Topics in Current Genetics*. Vol. 3. Model Systems in Ageing. T. Nystrom and H.D. Osiewacz, editors. Springer-Verlag, Berlin/Heidelberg. 61–97.
- Burns, N., B. Grimwade, P.B. Ross-Macdonald, E.Y. Choi, K. Finberg, G.S. Roeder, and M. Snyder. 1994. Large-scale analysis of gene expression, protein localization, and gene disruption in *Saccharomyces cerevisiae*. *Genes Dev.* 8:1087–1105.
- Courchesne, W.E. 2002. Characterization of a novel, broad-based fungicidal activity for the antiarrhythmic drug amiodarone. *J. Pharmacol. Exp. Ther.* 300:195–199.
- Courchesne, W.E., and S. Ozturk. 2003. Amiodarone induces a caffeine-inhibited, MID1-dependent rise in free cytoplasmic calcium in *Saccharomyces cerevisiae*. *Mol. Microbiol.* 47:223–234.
- Cyert, M.S., and J. Thorner. 1992. Regulatory subunit (CNB1 gene product) of yeast  $\text{Ca}^{2+}$ /calmodulin-dependent phosphoprotein phosphatases is required for adaptation to pheromone. *Mol. Cell. Biol.* 12:3460–3469.
- Davermann, D., M. Martinez, J. McKoy, N. Patel, D. Averbek, and C.W. Moore. 2002. Impaired mitochondrial function protects against free radical-mediated cell death. *Free Radic. Biol. Med.* 33:1209–1220.
- Engelberg-Kulka, H., B. Sat, M. Reches, S. Amitai, and R. Hazan. 2004. Bacterial programmed cell death systems as targets for antibiotics. *Trends Microbiol.* 12:66–71.
- Fabrizio, P., F. Pozza, S.D. Pletcher, C.M. Gendron, and V.D. Longo. 2001. Regulation of longevity and stress resistance by Sch9 in yeast. *Science*. 292:288–290.
- Fabrizio, P., L.L. Liou, V.N. Moy, A. Diaspro, J. Selverstone Valentine, E.B. Gralla, and V.D. Longo. 2003. SOD2 functions downstream of Sch9 to extend longevity in yeast. *Genetics*. 163:35–46.
- Fabrizio, P., S.D. Pletcher, N. Minois, J.W. Vaupel, and V.D. Longo. 2004. Chronological aging-independent replicative life span regulation by Msn2/Msn4 and Sod2 in *Saccharomyces cerevisiae*. *FEBS Lett.* 557:136–142.
- Fahrenkrog, B., U. Sauder, and U. Aebi. 2004. The *S. cerevisiae* HtrA-like protein Nma111p is a nuclear serine protease that mediates yeast apoptosis. *J. Cell Sci.* 117:115–126.
- Fannjiang, Y., W.C. Cheng, S.J. Lee, B. Qi, J. Pevsner, J.M. McCaffery, R.B. Hill, G. Basanez, and J.M. Hardwick. 2004. Mitochondrial fission proteins regulate programmed cell death in yeast. *Genes Dev.* 18:2785–2797.
- Frank, S., B. Gaume, E.S. Bergmann-Leitner, W.W. Leitner, E.G. Robert, F. Catez, C.L. Smith, and R.J. Youle. 2001. The role of dynamin-related protein 1, a mediator of mitochondrial fission, in apoptosis. *Dev. Cell.* 1:515–525.
- Gergely, P., Jr., C. Grossman, B. Niland, F. Puskas, H. Neupane, F. Allam, K. Banki, P.E. Phillips, and A. Perl. 2002. Mitochondrial hyperpolarization and ATP depletion in patients with systemic lupus erythematosus. *Arthritis Rheum.* 46:175–190.
- Gottlieb, E., M.G. Vander Heiden, and C.B. Thompson. 2000. Bcl-x(L) prevents the initial decrease in mitochondrial membrane potential and subsequent reactive oxygen species production during tumor necrosis factor alpha-induced apoptosis. *Mol. Cell. Biol.* 20:5680–5689.
- Gross, A., K. Pilcher, E. Blachly-Dyson, E. Basso, J. Jockel, M.C. Bassik, S.J. Korsmeyer, and M. Forte. 2000. Biochemical and genetic analysis of the mitochondrial response of yeast to BAX and BCL-X(L). *Mol. Cell. Biol.* 20:3125–3136.
- Gupta, S.S., V.K. Ton, V. Beaudry, S. Rulli, K. Cunningham, and R. Rao. 2003. Antifungal activity of amiodarone is mediated by disruption of calcium homeostasis. *J. Biol. Chem.* 278:28831–28839.
- Herker, E., H. Jungwirth, K.A. Lehmann, C. Maldener, K.U. Fröhlich, S. Wissing, S. Buttner, M. Fehr, S. Sigris, and F. Madeo. 2004. Chronological aging leads to apoptosis in yeast. *J. Cell Biol.* 164:501–507.

- Huh, G.H., B. Damsz, T.K. Matsumoto, M.P. Reddy, A.M. Rus, J.I. Ibeas, M.L. Narasimhan, R.A. Bressan, and P.M. Hasegawa. 2002. Salt causes ion disequilibrium-induced programmed cell death in yeast and plants. *Plant J.* 29:649–659.
- Huh, W.K., J.V. Falvo, L.C. Gerke, A.S. Carroll, R.W. Howson, J.S. Weissman, and E.K. O'Shea. 2003. Global analysis of protein localization in budding yeast. *Nature.* 425:686–691.
- Jazwinski, S.M. 2002. Growing old: metabolic control and yeast aging. *Annu. Rev. Microbiol.* 56:769–792.
- Jin, C., and J.C. Reed. 2002. Yeast and apoptosis. *Nat. Rev. Mol. Cell Biol.* 3:453–459.
- Kane, D.J., T.A. Sarafian, R. Anton, H. Hahn, E.B. Gralla, J.S. Valentine, T. Ord, and D.E. Bredesen. 1993. Bcl-2 inhibition of neural death: decreased generation of reactive oxygen species. *Science.* 262:1274–1277.
- Kluck, R.M., E. Bossy-Wetzel, D.R. Green, and D.D. Newmeyer. 1997. The release of cytochrome c from mitochondria: a primary site for Bcl-2 regulation of apoptosis. *Science.* 275:1132–1136.
- Koch, C., A. Schleiffer, G. Ammerer, and K. Nasmyth. 1996. Switching transcription on and off during the yeast cell cycle: Cln/Cdc28 kinases activate bound transcription factor SBF (Swi4/Swi6) at start, whereas Clb/Cdc28 kinases displace it from the promoter in G2. *Genes Dev.* 10:129–141.
- Korshunov, S.S., V.P. Skulachev, and A.A. Starkov. 1997. High protonic potential actuates a mechanism of production of reactive oxygen species in mitochondria. *FEBS Lett.* 416:15–18.
- Kurjan, J. 1993. The pheromone response pathway in *Saccharomyces cerevisiae*. *Annu. Rev. Genet.* 27:147–179.
- Lam, E., D. Pontier, and O. del Pozo. 1999. Die and let live—programmed cell death in plants. *Curr. Opin. Plant Biol.* 2:502–507.
- Laun, P., A. Pichova, F. Madeo, J. Fuchs, A. Ellinger, S. Kohlwein, I. Dawes, K.U. Frohlich, and M. Breitenbach. 2001. Aged mother cells of *Saccharomyces cerevisiae* show markers of oxidative stress and apoptosis. *Mol. Microbiol.* 39:1166–1173.
- Lewis, K. 2000. Programmed death in bacteria. *Microbiol. Mol. Biol. Rev.* 64:503–514.
- Li, P.F., R. Dietz, and R. von Harsdorf. 1999. p53 regulates mitochondrial membrane potential through reactive oxygen species and induces cytochrome c-independent apoptosis blocked by Bcl-2. *EMBO J.* 18:6027–6036.
- Ligr, M., I. Velten, E. Frohlich, F. Madeo, M. Ledig, K.U. Frohlich, D.H. Wolf, and W. Hilt. 2001. The proteasomal substrate Stm1 participates in apoptosis-like cell death in yeast. *Mol. Biol. Cell.* 12:2422–2432.
- Liu, X., C.N. Kim, J. Yang, R. Jemmerson, and X. Wang. 1996. Induction of apoptotic program in cell-free extracts: requirement for dATP and cytochrome c. *Cell.* 86:147–157.
- Ludovico, P., M.J. Sousa, M.T. Silva, C. Leao, and M. Corte-Real. 2001. *Saccharomyces cerevisiae* commits to a programmed cell death process in response to acetic acid. *Microbiology.* 147:2409–2415.
- Ludovico, P., F. Rodrigues, A. Almeida, M.T. Silva, A. Barrientos, and M. Corte-Real. 2002. Cytochrome c release and mitochondria involvement in programmed cell death induced by acetic acid in *Saccharomyces cerevisiae*. *Mol. Biol. Cell.* 13:2598–2606.
- Madeo, F., E. Frohlich, and K.U. Frohlich. 1997. A yeast mutant showing diagnostic markers of early and late apoptosis. *J. Cell Biol.* 139:729–734.
- Madeo, F., E. Frohlich, M. Ligr, M. Grey, S.J. Sigrist, D.H. Wolf, and K.U. Frohlich. 1999. Oxygen stress: a regulator of apoptosis in yeast. *J. Cell Biol.* 145:757–767.
- Madeo, F., S. Engelhardt, E. Herker, N. Lehmann, C. Maldener, A. Proksch, S. Wissing, and K.U. Frohlich. 2002a. Apoptosis in yeast: a new model system with applications in cell biology and medicine. *Curr. Genet.* 41:208–216.
- Madeo, F., E. Herker, C. Maldener, S. Wissing, S. Lachelt, M. Herlan, M. Fehr, K. Lauber, S.J. Sigrist, S. Wesselborg, and K.U. Frohlich. 2002b. A caspase-related protease regulates apoptosis in yeast. *Mol. Cell.* 9:911–917.
- Manon, S., B. Chaudhuri, and M. Guerin. 1997. Release of cytochrome c and decrease of cytochrome c oxidase in Bax-expressing yeast cells, and prevention of these effects by coexpression of Bcl-xL. *FEBS Lett.* 415:29–32.
- Matarrese, P., U. Testa, R. Cauda, S. Vella, L. Gambardella, and W. Malorni. 2001. Expression of P-170 glycoprotein sensitizes lymphoblastoid CEM cells to mitochondria-mediated apoptosis. *Biochem. J.* 355:587–595.
- Moser, M.J., J.R. Geiser, and T.N. Davis. 1996. Ca<sup>2+</sup>-calmodulin promotes survival of pheromone-induced growth arrest by activation of calcineurin and Ca<sup>2+</sup>-calmodulin-dependent protein kinase. *Mol. Cell Biol.* 16:4824–4831.
- Nagy, G., A. Koncz, and A. Perl. 2003. T cell activation-induced mitochondrial hyperpolarization is mediated by Ca<sup>2+</sup>- and redox-dependent production of nitric oxide. *J. Immunol.* 171:5188–5197.
- Narasimhan, M.L., B. Damsz, M.A. Coca, J.I. Ibeas, D.J. Yun, J.M. Pardo, P.M. Hasegawa, and R.A. Bressan. 2001. A plant defense response effector induces microbial apoptosis. *Mol. Cell.* 8:921–930.
- Newmeyer, D.D., D.M. Farschon, and J.C. Reed. 1994. Cell-free apoptosis in *Xenopus* egg extracts: inhibition by Bcl-2 and requirement for an organelle fraction enriched in mitochondria. *Cell.* 79:353–364.
- Ohsumi, Y., and Y. Anraku. 1985. Specific induction of Ca<sup>2+</sup> transport activity in MATa cells of *Saccharomyces cerevisiae* by a mating pheromone, alpha factor. *J. Biol. Chem.* 260:10482–10486.
- Perez-Vazquez, V., A. Saavedra-Molina, and S. Uribe. 2003. In *Saccharomyces cerevisiae*, cations control the fate of the energy derived from oxidative metabolism through the opening and closing of the yeast mitochondrial unselective channel. *J. Bioenerg. Biomembr.* 35:231–241.
- Phillips, A.J., I. Sudbery, and M. Ramsdale. 2003. Apoptosis induced by environmental stresses and amphoterin B in *Candida albicans*. *Proc. Natl. Acad. Sci. USA.* 100:14327–14332.
- Piacentini, M., M.G. Farrace, L. Piredda, P. Matarrese, F. Ciccocanti, L. Falasca, C. Rodolfo, A.M. Giammarioli, E. Verderio, M. Griffin, and W. Malorni. 2002. Transglutaminase overexpression sensitizes neuronal cell lines to apoptosis by increasing mitochondrial membrane potential and cellular oxidative stress. *J. Neurochem.* 81:1061–1072.
- Piatti, S., T. Bohm, J.H. Cocker, J.F. Diffley, and K. Nasmyth. 1996. Activation of S-phase-promoting CDKs in late G1 defines a “point of no return” after which Cdc6 synthesis cannot promote DNA replication in yeast. *Genes Dev.* 10:1516–1531.
- Qi, H., T.K. Li, D. Kuo, E.K.A. Nur, and L.F. Liu. 2003. Inactivation of Cdc13p triggers MEC1-dependent apoptotic signals in yeast. *J. Biol. Chem.* 278:15136–15141.
- Raff, M. 1998. Cell suicide for beginners. *Nature.* 396:119–122.
- Rasmusson, A.G., and I.M. Moller. 1991. Effect of calcium ions and inhibitors on internal NAD(P)H dehydrogenases in plant mitochondria. *Eur. J. Biochem.* 202:617–623.
- Rose, M.D., F. Winston, and P. Hieter. 1990. *Methods in Yeast Genetics*. Cold Spring Harbor Laboratory Press, Cold Spring Harbor, NY. 198 pp.
- Sanchez-Alcazar, J.A., J.G. Ault, A. Khodjakov, and E. Schneider. 2000. Increased mitochondrial cytochrome c levels and mitochondrial hyperpolarization precede camptothecin-induced apoptosis in Jurkat cells. *Cell Death Differ.* 7:1090–1100.
- Scarlett, J.L., P.W. Sheard, G. Hughes, E.C. Ledgerwood, H.H. Ku, and M.P. Murphy. 2000. Changes in mitochondrial membrane potential during staurosporine-induced apoptosis in Jurkat cells. *FEBS Lett.* 475:267–272.
- Severin, F.F., and A.A. Hyman. 2002. Pheromone induces programmed cell death in *S. cerevisiae*. *Curr. Biol.* 12:R233–R235.
- Skulachev, V.P. 1996a. Role of uncoupled and non-coupled oxidations in maintenance of safely low levels of oxygen and its one-electron reductants. *Q. Rev. Biophys.* 29:169–202.
- Skulachev, V.P. 1996b. Why are mitochondria involved in apoptosis? Permeability transition pores and apoptosis as selective mechanisms to eliminate superoxide-producing mitochondria and cell. *FEBS Lett.* 397:7–10.
- Skulachev, V.P. 1999. Mitochondrial physiology and pathology; concepts of programmed death of organelles, cells and organisms. *Mol. Aspects Med.* 20:139–184.
- Skulachev, V.P. 2001. The programmed death phenomena, aging, and the Samurail law of biology. *Exp. Gerontol.* 36:995–1024.
- Skulachev, V.P. 2002. Programmed death in yeast as adaptation? *FEBS Lett.* 528:23–26.
- Skulachev, V.P. 2003. Ageing and the programmed death phenomena. In *Topics in Current Genetics*. Vol. 3. Model Systems in Ageing. T. Nystrom and H.D. Osiewacz, editors. Springer-Verlag, Berlin/Heidelberg. 191–238.
- Skulachev, V.P., L.E. Bakeeva, B.V. Chernyak, L.V. Domnina, A.A. Minin, O.Y. Pletjushkina, V.B. Saprunova, I.V. Skulachev, V.G. Tsyplenkova, J.M. Vasiliev, et al. 2004. Thread-grain transition of mitochondrial reticulum as a step of mitoptosis and apoptosis. *Mol. Cell. Biochem.* 256–257:341–358.
- Susin, S.A., N. Zamzami, M. Castedo, T. Hirsch, P. Marchetti, A. Macho, E. Dugas, M. Geuskens, and G. Kroemer. 1996. Bcl-2 inhibits the mitochondrial release of an apoptogenic protease. *J. Exp. Med.* 184:1331–1341.
- Susin, S.A., H.K. Lorenz, N. Zamzami, I. Marzo, B.E. Snow, G.M. Brothers, J. Mangion, E. Jacotot, P. Costantini, M. Loeffler, et al. 1999. Molecular characterization of mitochondrial apoptosis-inducing factor. *Nature.* 397:441–446.
- Vander Heiden, M.G., N.S. Chandel, P.T. Schumacker, and C.B. Thompson. 1999. Bcl-xL prevents cell death following growth factor withdrawal by facilitating mitochondrial ATP/ADP exchange. *Mol. Cell.* 3:159–167.
- Varbiro, G., A. Toth, A. Tapodi, B. Veres, B. Sumegi, and F. Gallyas Jr. 2003. Concentration dependent mitochondrial effect of amiodarone. *Biochem. Pharmacol.* 65:1115–1128.

- Weinberger, M., L. Ramachandran, and W.C. Burhans. 2003. Apoptosis in yeasts. *IUBMB Life*. 55:467–472.
- Weismann, A. 1889. *Essays Upon Heredity and Kindred Biological Problems*. Claderon Press, Oxford. 65 pp.
- Wissing, S., P. Ludovico, E. Herker, S. Buttner, S.M. Engelhardt, T. Decker, A. Link, A. Proksch, F. Rodrigues, M. Corte-Real, et al. 2004. An AIF orthologue regulates apoptosis in yeast. *J. Cell Biol.* 166:969–974.
- Yamaki, M., T. Umehara, T. Chimura, and M. Horikoshi. 2001. Cell death with predominant apoptotic features in *Saccharomyces cerevisiae* mediated by deletion of the histone chaperone ASF1/CIA1. *Genes Cells*. 6:1043–1054.
- Yang, J., X. Liu, K. Bhalla, C.N. Kim, A.M. Ibrado, J. Cai, T.I. Peng, D.P. Jones, and X. Wang. 1997. Prevention of apoptosis by Bcl-2: release of cytochrome c from mitochondria blocked. *Science*. 275:1129–1132.
- Zha, H., H.A. Fisk, M.P. Yaffe, N. Mahajan, B. Herman, and J.C. Reed. 1996. Structure-function comparisons of the proapoptotic protein Bax in yeast and mammalian cells. *Mol. Cell. Biol.* 16:6494–6508.
- Zhang, Q., H.K. Chieu, C.P. Low, S. Zhang, C.K. Heng, and H. Yang. 2003. *Schizosaccharomyces pombe* cells deficient in triacylglycerols synthesis undergo apoptosis upon entry into the stationary phase. *J. Biol. Chem.* 278:47145–47155.