



Pathogenic mechanism of second hand smoke induced inflammation and COPD

Rahel L. Birru and Y. Peter Di*

Department of Environmental and Occupational Health, University of Pittsburgh, Pittsburgh, PA, USA

Edited by:

Michael Borchers, University of Cincinnati College of Medicine, USA

Reviewed by:

Norihiro Shinozuka, Chibaken Saiseikai Narashino Hospital, Japan
Stephania Cormier, Louisiana State University Health Sciences Center - New Orleans, USA

*Correspondence:

Y. Peter Di, Department of Environmental and Occupational Health, University of Pittsburgh, 100 Technology Drive, Rm 322, Pittsburgh, PA 15260, USA.
e-mail: peterdi@pitt.edu

Second hand smoke (SHS) introduces thousands of toxic chemicals into the lung, including carcinogens and oxidants, which cause direct airway epithelium tissue destruction. It can also illicit indirect damage through its effect on signaling pathways related to tissue cell repair and by the abnormal induction of inflammation into the lung. After repeated exposure to SHS, these symptoms can lead to the development of pulmonary inflammatory disorders, including chronic obstructive pulmonary disease (COPD). COPD is a severe pulmonary disease characterized by chronic inflammation and irreversible tissue destruction. There is no causal cure, as the mechanism behind the development and progression of the disease is still unknown. Recent discoveries implicate genetic predisposition associated with inflammatory response contributed to the development of COPD, linked to irregular innate and adaptive immunity, as well as a risk factor for cancer. The use of animal models for both cigarette smoke (CS) and SHS associated *in vivo* experiments has been crucial in elucidating the pathogenic mechanisms and genetic components involved in inflammation-related development of COPD.

Keywords: second hand smoke, inflammation, COPD, immunity, cancer

CLASSIFICATION OF SHS

Second hand smoke (SHS) is classified as exposure to sidestream smoke, produced directly by tobacco containing products (cigarettes, cigars, and pipes), or mainstream smoke, exhaled by smokers. The US Environmental Protection Agency determined in 1986 that SHS is a cause of lung cancer development, responsible for approximately 3000 lung cancer deaths annually (Jinot and Bayard, 1994; IARC, 2004; Talhout et al., 2011). In 2010, there were 10.3% adult smokers worldwide, or 45.3 million people, so the frequency of SHS exposure can be extensive (King et al., 2011). Around 10–25% of lung cancers are diagnosed in nonsmokers, who are considered to have smoked less than 100 cigarettes in their lifetime (Couraud et al., 2012). Evidence for the toxicity of SHS was found in non-smoking individuals with spouses who smoked cigarettes, who displayed elevated risks for lung cancer, heart disease, and respiratory disorders (HHS, 2006; Sebelius, 2011).

The burning tip of a cigarette is hot enough to allow for the release of tobacco smoke (TS) components into a gas and particulate vapor that is easily absorbed into the lung (Pappas, 2011; Talhout et al., 2011). This vapor rapidly enters the lower airways of the human lung, and eventually the circulatory and lymphatic systems (IARC, 2004; Baker, 2006). While tobacco is comprised of more than 5000 constituents, TS contains roughly 2800 molecules not found in tobacco, including reactive oxygen species (ROS) and nitric oxides (Baker, 2006). This indicates that the combustion, pyrolysis, and prosynthetic reactions during the flaming of the tobacco product are what create the components of TS (Baker, 2006). Approximately 250 carcinogenic and noxious chemicals have been measured in both sidestream and

mainstream smoke (HHS, 2006). Mainstream smoke is generated at high temperatures in the presence of oxygen drawn through the column of a smoking apparatus, resulting in larger particles than sidestream smoke (HHS, 2006). Sidestream smoke is generated at lower temperatures in an oxygen-poor environment, with higher concentrations of ammonia, nitric oxides, and carcinogens (HHS, 2006). While all forms of environmental TS exposure have been shown to cause genetic damage, the detriments of SHS to a person vary based on proximity to source of smoke, time, and environment.

SHS-INDUCED INFLAMMATION AND COPD

In response to SHS exposure, there is enhanced recruitment of inflammatory cells to the lung, particularly neutrophils and macrophages (Rennard et al., 2006). Short-term exposure to SHS does not result in a notable difference in inflammation in humans, though endothelial function deteriorates (Bonetti et al., 2011). Long-term TS exposure in mice leads to significantly increased inflammation, as measured by the influx of alveolar macrophages, neutrophils, and antioxidant enzymes (Bezerra et al., 2011). TS can also directly bind to DNA to effect the expression of genes related to inflammation. Sekhon et al. determined that nicotine can enter the placenta and directly interact with nicotine receptors on non-neuronal cells of the fetus (Sekhon et al., 1999). They also found that nicotine exposure leads to the enhancement of elastin and collagen type I and III mRNA expression, as well as airway wall expansion in the fetal lung (Sekhon et al., 2002).

SHS increases the incidence and severity of respiratory infections and disorders in humans (Jinot and Bayard, 1994; HHS,

2006; Sebelius, 2011). Exposure to TS introduces thousands of xenobiotics to the lung, and can lead to a persistent inflammatory response in the small airways and alveoli. This is the foundation for the development of pulmonary inflammatory disorders, such as COPD. COPD is a progressive and irreversible airflow obstructive disease of the lung and the third leading cause of death in the US. Of patients who are diagnosed with lung cancer, 40–70% of patients have COPD (Young et al., 2009). Chronic bronchitis, characterized by a consistent cough with mucus secretion, and emphysema, characterized by the destruction of airway epithelium and thickening of airway walls, is the distinct phenotypes that define COPD, though they can occur concurrently. Manifestation of COPD is a result of an interaction of TS exposure with other toxic environmental exposures, genetic factors, and unresolved childhood respiratory infections (Decramer et al., 2012). While TS is the main risk factor for COPD, only 20% of smokers develop COPD, suggesting a genetic predisposition (Young et al., 2009). Evidence for this includes the discovery of the genetic variants and mutations associated with TS-induced inflammation and COPD (Gwilt et al., 2007; Guo et al., 2012; Hunt and Tuder, 2012). These polymorphisms and mutations may be responsible for the exacerbation of inflammatory symptoms, resulting in COPD and lung cancer development (Young et al., 2009).

One of the most damaging effects of TS is oxidative damage, which promotes COPD development (Decramer et al., 2012). SHS contains $>10^{16}$ free radicals per cigarette (Barcelo et al., 2008), comprising of ROS and peroxides (Baker, 2006). When introduced to the lung, an imbalance of oxidant and antioxidants, which protect against free radicals, occurs and results in oxidative stress (HHS, 2006). Oxidative stress induces direct airway epithelial damage, as well as indirect damage by altering signaling pathways. These pathways are related to cell proliferation, differentiation, and proinflammatory cytokines and chemokines through the upregulation of the transcription factors nuclear factor- κ B (NF- κ B) and activator-protein 1 (AP-1) (MacNee, 2001; HHS, 2006). Oxidative stress also leads to the oxidation of DNA, lipids, and proteins, resulting in lung injury and the production of secondary ROS (MacNee, 2001). Additionally, it can prevent repair processes in the damaged epithelium through inhibition or damage to surfactant and antiproteases, which leads to the development of fibrosis (MacNee, 2001; Decramer et al., 2012). Howard et al. developed a short-term SHS rat model and found considerable DNA damage in several tissues, measured by the presence of 8-hydroxy-2'-deoxyguanosine (8-OHdG), a major product of DNA oxidation (Howard et al., 1998). Chiang et al. found that 8-OHdG levels in human plasma increases with SHS exposure in a dose-dependent manner (Chiang et al., 2012).

Both the innate and adaptive immune responses play a role in the pathogenesis of COPD. In response to SHS, the innate immune response is triggered, resulting in inflammatory cell infiltration, mainly neutrophils and macrophages, to the mucosa and submucosa glands of the airway epithelium (van Antwerpen et al., 1995; MacNee, 2001; Decramer et al., 2012). Neutrophils and macrophages release neutrophil elastase and macrophage metalloproteases, respectively, along with pro-apoptotic factors to

combat toxins and prevent the spread of injury. Accumulation of activated inflammatory cells from repeated SHS exposure reduces their usefulness, resulting in tissue damage and oxidative stress (Bosken et al., 1991; Rennard et al., 2006). This exacerbates TS-induced airway destruction, fibrosis, and remodeling, which are the basis for the development of inflammatory disorders (Bosken et al., 1991; Rennard et al., 2006).

TS can enhance the damaging phenotype of inflammatory cells. In study participants exposed to 3 hours of sidestream smoke, there was an average of 71% more reactive oxidants released by neutrophils (Anderson et al., 1991). Furthermore, activated polymorphonuclear cells are delayed in the lung microvessels by TS, allowing for enhanced tissue destruction (Klut et al., 1993). A positive correlation has been found with higher numbers of neutrophils in the circulating blood and reduced airway function, measured by spirometric levels (FEV1), in smoker lungs (van Antwerpen et al., 1995).

Dendritic cells are the link between the innate and adaptive immunity. If the innate immune response is unable to control the damage by TS, the recruited inflammatory cells, cytokines, chemokines, antigens, and other factors can induce dendritic cells to migrate to the lymphnodes for activation and differentiation (Cosio, 2004). Dendritic cells interact with T-cells and B-cells to instigate and shape the adaptive immune response. Naïve T-cells differentiate into several subsets, including T-helper 1 (Th1), T-Helper 2 (Th2), T-helper 17 (Th17), and regulatory T cells (Treg). These are distinct in the T-cell factors and cytokines they activate. The differentiation is largely dependent on the local inflammatory environment and the strength of the T cell receptor with the antigen (Zhou et al., 2009). The characteristic of the T-cells in disease manifestation and progression is important to consider, because the imbalance of T-cell populations can lead to irregular and severe inflammatory responses. Further analysis into the inflammatory microenvironment of the COPD lung has led to the discovery that the Th1 (Grumelli et al., 2004; Lee et al., 2007) and Th17 (Vargas-Rojas et al., 2011) subsets are particularly high in the COPD lung, with Th17 cells conceivably mediating the Th1 activity (Alcorn et al., 2010; Vanaudenaerde et al., 2011). Chen et al. exposed wild-type and IL-17Ra deficient mice to sidestream smoke for 6 months and found that the deficient mice developed significantly less tissue emphysema and airspace enlargement (Chen et al., 2011).

In addition, Tregs are absent in the bronchoalveolar lavage (BAL) fluid and blood of COPD patients (Lee et al., 2007; Barcelo et al., 2008), while smokers without COPD show an upregulation of this subtype (Barcelo et al., 2008). Tregs are critical in containing the immune response and maintaining tolerance to self-antigens. Therefore, without Treg regulation, continual exposure to TS can lead to an overpowering pro-inflammatory response mediated by Th1 and Th17 lymphocytes, resulting in the severe airway damage characterized by COPD.

B-cells have also been found to be upregulated in TS-driven emphysema patients. B-cell follicles were found in the bronchial walls and parenchyma of these patients and increased over time, which correlated with progressive airspace enlargement (van der Strate et al., 2006). While exposure to TS illicit airway damage and subsequent release of antigens by the innate immune system

in all lungs, not all people react to the antigens and have resulting B- and T-cell differentiation, which explains why only a percentage of smokers develop COPD (Cosio et al., 2009). There is also a variation in the degree in which people react to the antigens, which explains the deviation in severity of the disease (Cosio et al., 2009).

Of growing interest is the hypothesis that COPD is linked to autoimmunity. Reduced levels of Tregs are an indication of autoimmunity (Shevach, 2000). Also, in order for T-cells to migrate to the lung, they must be activated by antigens (self or modified-self) (Cosio, 2004). Lee et al. discovered that antibodies toward elastin, a self-antigen, were significantly increased in emphysema patients (Lee et al., 2007). They propose TS-exposure leads to proteolytic-induced cleavage of elastin, resulting in fragments that generate T- and B-cell immunity against elastin (Lee et al., 2007). Kirkham et al. propose that chronic oxidative stress in COPD induces carbonyl-modification of self-proteins, creating neoantigens that are targeted by the immune system. In support of this hypothesis, they found increased antibody titer against carbonyl-modified self-proteins in COPD patients versus control subjects (Kirkham et al., 2011). Additionally, the persistence of COPD symptoms after smoking cessation indicates that T- and B-cells are recruited in response to self-antigens (Motz et al., 2008; Cosio et al., 2009).

INFLAMMATION AND CANCER

The enhanced inflammatory cell environment of the lung from exposure to TS can promote the development of mutated cells into malignant cells, eventually resulting in tumor formation and progression. While acute inflammation inhibits tumor growth, long-term inflammation promotes tumor enlargement and metastasis. Because TS can compromise alveolar repair mechanisms, such as chemotaxis, apoptosis, and matrix restoration, these malignant cells can develop into tumors and metastasize (Rennard et al., 2006). Jinushi et al. generated genetically modified mice study the relationship of chronic inflammation and lung cancer by simulating defects in apoptotic cell clearance, autoreactive Th17, and increased vulnerability to infection (Jinushi et al., 2007). These mice developed chronic pulmonary inflammation and lung adenocarcinomas, as well as increased mortality (Jinushi et al., 2007).

The main link between chronic inflammation and oncogenesis is considered to be TNF- α mediated upregulation of NF- κ B, which induces anti-apoptotic and proliferative effects. TNF- α has a seemingly contradictory role of stimulating apoptosis through activation of caspase 8, while simultaneously activating NF- κ B, which protects cells from pro-apoptotic stimuli. NF- κ B is a transcription factor which plays an integral role in the immune response to infection. It is activated by cellular signals resulting from stimuli such as necrotic cells, cytokines, and ROS. Once activated, NF- κ B translocates into the nucleus to bind to DNA, activating hundreds of different genes encoding proteins related to the immune response, inflammation, and cell growth. In an environment of pre-malignant cells due to environmental exposures like SHS, continual NF- κ B activation will support tumor development and progression by inhibiting apoptosis while activating cell proliferation, metastasis, and survival through the

products of genes it regulates (Karin et al., 2002; Luo et al., 2004; Philip et al., 2004; Karin, 2006).

In addition to TNF- α , there are other molecular pathways implicated in upregulating NF- κ B expression and other transcription factors (TFs). Zhao et al. used protein and DNA arrays to examine potential upstream signaling pathways responsible for TS-induced TF activation. By exposing cells to TS, they examined 244 different TFs. TS significantly regulates at least 20 TFs including NF- κ B, which may be involved in tumorigenesis and cell cycle regulation, activated primarily by MAPK signaling pathways (Zhao et al., 2007). These results indicate that MAPK signaling is also essential in TS-induced NF- κ B activation and subsequent inflammatory gene expression.

The long-term use of anti-inflammatory agents have been linked to decreased cancer incidence, indicating inflammation as a contributor to cancer development (Dougan et al., 2011). Witschi et al. exposed mice both mainstream and sidestream smoke for 5 months, followed by a 4 month recovery period (Witschi et al., 2005). When mice were introduced to dexamethasone, an anti-inflammatory and immunosuppressant glucocorticoid steroid drug, for 4 months, the lung tumor multiplicity decreased by 64% compared to control mice (Witschi et al., 2005).

COPD is believed to be an independent risk factor for lung cancer. Prevalence of COPD in lung cancer cases is six-fold higher than in smokers without lung cancer (Young et al., 2009). Because chronic airway inflammation is a risk factor for COPD and is related to the increase of human cancers, it is hypothesized that COPD and lung cancer may share chronic inflammation as a common pathogenic mechanism (Young et al., 2009).

USE OF ANIMAL MODELS

Animal models continue to be crucial in determining the genetic factors underlying SHS and COPD (Table 1). When considering mouse models for experimental use, the choice of strain is critical in studies related to both SHS and COPD as there are strain-related differences in the metabolism of TS as well as the inflammatory cell composition and magnitude. Vecchio et al. examined this issue by comparing C57BL/6J and Institute of Cancer Research (ICR) mice post-cigarette smoke extract exposure (Vecchio et al., 2010). They found that alveolar macrophages from C57BL/6J mice produced higher levels of ROS, NF- κ B, and proinflammatory cytokines (Vecchio et al., 2010). They hypothesize that the higher pro-inflammatory response in C57BL/6J versus ICR mice is due to higher oxidative stress in this strain, leading to increased activation of NF- κ B. This may describe the differences in susceptibility of the different strains of mice (Vecchio et al., 2010). Cavarra et al. found that after acute TS exposure, DBA/2 and C57BL/6J mice had decreased antioxidant defenses, measured in bronchoalveolar lavage fluid, while ICR mice had increased antioxidants (Cavarra et al., 2001). After chronic exposure to TS for 7 months, they found that DBA/2 and C57BL/6J mice are more likely to develop emphysema and decreased lung elastin levels, while ICR mice did not develop these phenotypes (Cavarra et al., 2001). Tsuji et al. compared CS-exposure in AKR/J and C57BL/6J mice and found that C57BL/6J mice inhaled higher

Table 1 | Factors that influence SHS-induced COPD development and progression.

Exposure	Factor	Role in COPD development	Animal model	Strain background	References
Lipopolysaccharide	Acetylcholine	Airway remodeling and emphysema	Guinea pig	Dunkin Hartley	Pera et al., 2011
Cigarette smoke Extract	Akt serine/threonine protein kinase (Akt)	Reduces cytotoxicity of TS, TS-exposure causes ubiquitination of Akt	Rat	Lewis	Kim et al., 2011
Cigarette smoke	Caspase 1 (Casp1)	Inflammatory cell influx through IL-1 β /IL-18	Mouse	C57BL/6	Churg et al., 2009
Cigarette smoke	C-Jun/Activator protein 1 (AP-1)	Regulates inflammation after long-term SHS exposure, restrains emphysema symptoms	Mouse	C57BL/6 \times 129SVJ	Reddy et al., 2012
Cigarette smoke	Clara cell 10 kDa (Ccsp)	Protects the airway epithelium, TS exposure causes metaplasia of clara cells	Mouse	BALB/c	Cuzic et al., 2012
Cigarette smoke	Chemokine (C-X3-C) receptor 1 (Cx3cr1)	Required for IL-6 and TNF- α production by phagocytes; development of emphysema phenotype	Mouse	C57BL/6	Xiong et al., 2011
Cigarette smoke	Early growth response-1 (Egr-1)	Promotes autophagy and apoptosis in early stages of COPD	Mouse	C57BL/6	Chen et al., 2008
Cigarette smoke	endothelial monocyte-activating protein 2 (EmapII)	Inducing apoptosis through caspase 3, macrophage influx, emphysema phenotype	Mouse	C57BL/6	Clauss et al., 2011
Cigarette smoke	Extracellular signal-regulated kinase 1/2 (Erk 1/2)	Airway mucus hypersecretion	Rat	Sprague-Dawley	Xiao et al., 2011
Cigarette smoke	Extracellular superoxide dismutase (Ecsod)	Reduces TS-induced oxidative stress	Mouse	C57BL/6	Tollefson et al., 2010
Cigarette smoke	Forkhead box O3 (Foxo3)	Regulates inflammation, antioxidant genes; downregulated in COPD	Mouse	FVB \times 129S6	Hwang et al., 2011
Cigarette smoke	Granulocyte/Macrophage colony-stimulating factor (Gm-CSf)	Initiation of inflammatory cell influx	Mouse	BALB/c	Vlahos et al., 2010
Cigarette smoke	IFN regulatory factor (Irf7)	Inhibited in COPD lung, dampens proinflammatory cytokines in lung dendritic cells	Mouse	C57BL/6	Shan et al., 2012
Overexpression of IL-11 through transgenic mouse model	Interleukin 11 (Il-11)	Emphysema phenotype, airway remodeling and fibrosis	Mouse	Not reported	Kuhn et al., 2000
Cigarette smoke extract	Interleukin 17 Receptor A (Il-17RA)	Induces matrix metalloproteinase -12 (MMP-12) and CCL2, required for emphysema development	Mouse	C57BL/6	Chen et al., 2011
Cigarette smoke	Interleukin 1 Receptor, Type 1 (Il1R1)	Critical in initiation of neutrophilic inflammatory response to short-term TS	Mouse	C57BL/6	Doz et al., 2008
Cigarette smoke	Interleukin 1 alpha (Il-1 α)	Critical in the initiation of the neutrophilic inflammatory response to TS	Mouse	BALB/c	Botelho et al., 2011
Overexpression of IL-1 β through transgenic mouse model	Interleukin 1 beta (Il1- β)	Macrophage and neutrophil influx, emphysema phenotype	Mouse	Not reported	Lappalainen et al., 2005

(continued)

Table 1 | Continued

Exposure	Factor	Role in COPD development	Animal model	Strain background	References
Overexpression of IL-6 through transgenic mouse model	Interleukin 6 (Il-6)	Emphysema phenotype, airway remodeling and fibrosis	Mouse	Not reported	Kuhn et al., 2000
Cigarette smoke	Mucin-5ac (Muc5ac)	Mucus secretion in response to pro-inflammatory cytokines	Rat	Sprague-Dawley	Xiao et al., 2011
Cigarette smoke	NADPH oxidase (Nox)	Highly expressed in neutrophils, source of oxidative stress	Mouse	C57BL/6	Tollefson et al., 2010
Cigarette smoke	Osteopontin (Opn)	Th17 differentiation, emphysema phenotype	Mouse	C57BL/6	Shan et al., 2012
Cigarette smoke	P2X7	Neutrophil influx, caspase 1 activity, IL-1 β	Mouse	C57BL/6	Eltom et al., 2011
Lipopolysaccharide and cigarette smoke	Peroxisome proliferator-activated receptor-gamma (Ppar γ)/PPAR γ coactivator-1 α (Pgc-1 α)	Relieves oxidative stress; expression decreases with progression of COPD	Rat	Sprague-Dawley	Li et al., 2010
Cigarette smoke	Transforming growth factor beta (Tgf- β)	Airway remodeling, emphysema phenotype	Mouse	AKR/J, C57BL/6	Podowski et al., 2012
Cigarette smoke	Toll-like receptor 4 (Tlr4)	Critical in the initiation of the neutrophilic inflammatory response to TS short-term (61, 63); Role is diminished in chronic TS-exposure model (61)	Mouse	C3H/HeJ (Maes), C57BL/6J (Doz)	Maes et al., 2006; Doz et al., 2008
Cigarette smoke	Toll-like receptor 4 (Tlr4)	Induces Metalloproteinase-1 (MMP-1), required for emphysema development	Mouse, Rabbit	C57BL/CBA, New Zealand White	Geraghty et al., 2011
Cigarette smoke	Tumor necrosis factor-alpha (Tnf- α)	Inflammatory cell influx, chronic inflammation, emphysema phenotype	Mouse	C57BL/6	Churg et al., 2004
Knock-out genetic model	Vascular endothelial growth factor (Vegf)	Preventative role in emphysema	Mouse	C57BL/6	Tang et al., 2004

Listed in alphabetical order are proteins, receptors, and other factors which have been discovered in animal models that influence SHS-induced COPD. Their degree of influence in vivo could vary based on the experimental design; therefore the exposure models and mouse strains are also included in the table.

amounts of smoke and more severe respiratory lesions, while AKR/J mice had higher inflammatory cytokine levels (Tsuji et al., 2011).

Our lab developed a mouse model to simulate the development of COPD and SHS (Birru et al., 2012). We separated mice into four treatment groups: filtered-air control, lipopolysaccharide (LPS) to stimulate inflammation, CS, and LPS combined with CS. Mice were sacrificed after 6 months of weekly LPS and daily CS exposure. The inflammatory response, alveolar space enlargement, and lung tumor incidence were assessed. In the LPS only group, mice displayed increased inflammation, but no alveolar space enlargement (**Figure 1**). In the LPS and CS group, mice displayed enhanced inflammation and alveolar space enlargement compared to the CS only group (**Figure 1**). No groups developed tumors in this exposure model at the duration examined. Our results indicate that chronic

inflammation enhances emphysema-like alveolar space enlargement.

We also developed an animal exposure paradigm using components of TS to determine the role of inflammation in the development and progression of tumor formation (Keohavong et al., 2011). We used LPS to incite inflammation and nicotine-derived nitrosamine (NNK) for tumorigenesis (14). Mice were assigned into four different treatment groups: saline control, LPS only, NNK only, and LPS combined with NNK for 4 months. The saline and LPS only groups had no tumor development, but there was a six-fold increase in tumor numbers in the LPS and NNK group compared to the NNK only group. The LPS only and LPS with NNK groups displayed significantly elevated inflammation compared to the saline and NNK only groups. Our results indicate that repeated exposure to inflammation enhances the progression of TS carcinogen-induced lung tumorigenesis.

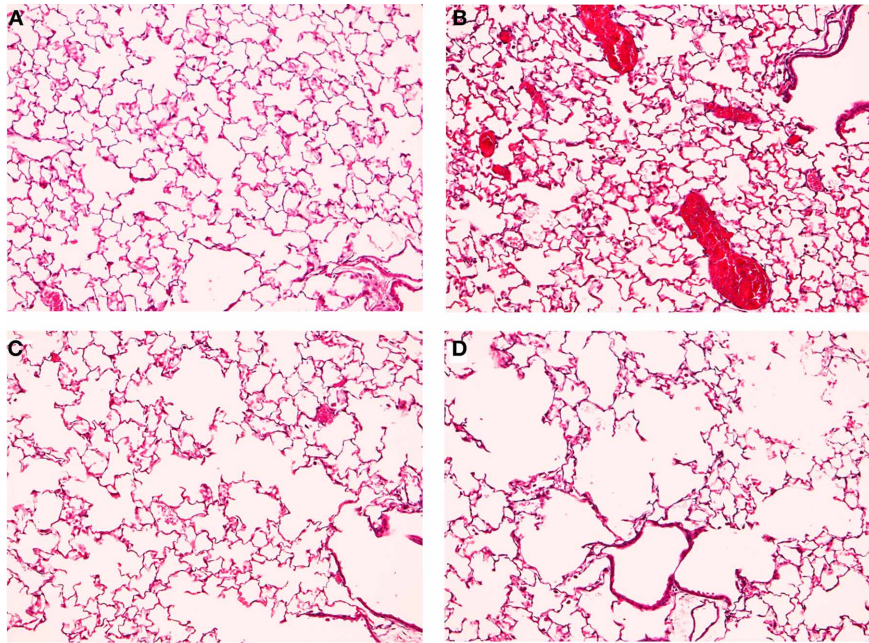


FIGURE 1 | TS and LPS treated mice have enhanced inflammation and alveolar space enlargement. Mice were exposed to filtered air (A,B) or TS (C,D) generated by Kentucky Research Cigarettes for 6 months. Inflammation was further induced by intranasal LPS instillation (B,D), with saline as a control (A,C). Lung histology was analyzed by staining lung

sections with hematoxylin and eosin. Results shown are representative images for each treatment at 10X magnification. TS-exposed mice displayed alveolar space enlargement (C) compared to filtered air exposure (A). LPS stimulated inflammatory cell influx (B) and enhanced the alveolar space enlargement induced by TS (D) relative to TS-only exposure (C).

CONCLUSIONS

SHS exposure is detrimental to the lung, resulting in lung destruction through the introduction of toxic chemicals to the lung and oxidants, as well as the inhibiting the repair pathways of the lung. Continued SHS exposure can also lead to the development of inflammation, which worsen COPD, due to the abnormal polarization of T- and B-cell differentiation. The enhanced inflammatory environment of the lung can also promote tumor initiation and progression of malignant cells through the activation of transcription factors that

promote cell proliferation and inhibit apoptosis. Both environmental factors and genetic components underlying COPD continue to be uncovered, and will be crucial in developing useful treatments for the disease. Animal models for SHS-driven COPD studies will continue to play an essential role for this objective.

ACKNOWLEDGMENTS

The work was supported by ES011033 and HL091938 from the National Institutes of Health.

REFERENCES

- Alcorn, J. F., Crowe, C. R., and Kolls, J. K. (2010). TH17 cells in asthma and COPD. *Annu. Rev. Physiol.* 72, 495–516.
- Anderson, R., Theron, A. J., Richards, G. A., Myer, M. S., and van Rensburg, A. J. (1991). Passive smoking by humans sensitizes circulating neutrophils. *Am. Rev. Respir. Dis.* 144, 570–574.
- Baker, R. R. (2006). Smoke generation inside a burning cigarette: modifying combustion to develop cigarettes that may be less hazardous to health. *Prog. Energ. Combust. Sci.* 32, 373–385.
- Barcelo, B., Pons, J., Ferrer, J. M., Sauleda, J., Fuster, A., and Agusti, A. G. (2008). Phenotypic characterisation of T-lymphocytes in COPD: abnormal CD4+CD25+ regulatory T-lymphocyte response to tobacco smoking. *Eur. Respir. J.* 31, 555–562.
- Bezerra, F. S., Valenca, S. S., Pires, K. M., Lanzetti, M., Pimenta, W. A., Schmidt, A. C., Porto, L. C., and Zin, W. A. (2011). Long-term exposure to cigarette smoke impairs lung function and increases HMGB-1 expression in mice. *Respir. Physiol. Neurobiol.* 177, 120–126.
- Birru, R., Kahkonen, B., and Di, Y. P. (2012). Chronic inflammation in the pathogenesis of COPD and lung cancer. *Proc. Am. Thorac. Soc.* 9, 81.
- Bonetti, P. O., Lardi, E., Geissmann, C., Kuhn, M. U., Bruesch, H., and Reinhart, W. H. (2011). Effect of brief secondhand smoke exposure on endothelial function and circulating markers of inflammation. *Atherosclerosis* 215, 218–222.
- Bosken, C. H., Doerschuk, C. M., English, D., and Hogg, J. C. (1991). Neutrophil kinetics during active cigarette smoking in rabbits. *J. Appl. Physiol.* 71, 630–637.
- Botelho, F. M., Bauer, C. M., Finch, D., Nikota, J. K., Zavitz, C. C., Kelly, A., Lambert, K. N., Piper, S., Foster, M. L., Goldring, J. J., Wedzicha, J. A., Bassett, J., Bramson, J., Iwakura, Y., Sleeman, M., Kolbeck, R., Coyle, A. J., Humbles, A. A., and Stampfli, M. R. (2011). IL-1alpha/IL-1R1 expression in chronic obstructive pulmonary disease and mechanistic relevance to smoke-induced neutrophilia in mice. *PLoS ONE* 6:e28457. doi: 10.1371/journal.pone.0028457
- Cavarra, E., Bartalesi, B., Lucattelli, M., Fineschi, S., Lunghi, B., Gambelli, F., Ortiz, L. A., Martorana, P. A., and Lungarella, G. (2001). Effects of cigarette smoke in mice with different levels of alpha(1)-proteinase inhibitor and sensitivity to oxidants. *Am. J. Respir. Crit. Care Med.* 164, 886–890.
- Chen, K., Pociask, D. A., McAleer, J. P., Chan, Y. R., Alcorn, J. F., Kreindler, J. L., Keyser, M. R., Shapiro, S. D., Houghton, A. M., Kolls, J.

- K., and Zheng, M. (2011). IL-17RA is required for CCL2 expression, macrophage recruitment, and emphysema in response to cigarette smoke. *PLoS ONE* 6:e20333. doi: 10.1371/journal.pone.0020333
- Chen, Z. H., Kim, H. P., Sciurba, F. C., Lee, S. J., Feghali-Bostwick, C., Stolz, D. B., Dhir, R., Landreneau, R. J., Schuchert, M. J., Yousem, S. A., Nakahira, K., Pilewski, J. M., Lee, J. S., Zhang, Y., Ryter, S. W., and Choi, A. M. (2008). Egr-1 regulates autophagy in cigarette smoke-induced chronic obstructive pulmonary disease. *PLoS ONE* 3:e3316. doi: 10.1371/journal.pone.0003316
- Chiang, H. C., Huang, Y. K., Chen, P. F., Chang, C. C., Wang, C. J., Lin, P., and Lee, H. L. (2012). 4-(Methylnitrosamino)-1-(3-pyridyl)-1-butanone is correlated with 8-hydroxy-2'-deoxyguanosine in humans after exposure to environmental tobacco smoke. *Sci. Total Environ.* 414, 134–139.
- Churg, A., Wang, R. D., Tai, H., Wang, X., Xie, C., and Wright, J. L. (2004). Tumor necrosis factor- α drives 70% of cigarette smoke-induced emphysema in the mouse. *Am. J. Respir. Crit. Care Med.* 170, 492–498.
- Churg, A., Zhou, S., Wang, X., Wang, R., and Wright, J. L. (2009). The role of interleukin-1 β in murine cigarette smoke-induced emphysema and small airway remodeling. *Am. J. Respir. Cell Mol. Biol.* 40, 482–490.
- Claus, M., Voswinkel, R., Rajashekar, G., Sigua, N. L., Fehrenbach, H., Rush, N. I., Schweitzer, K. S., Yildirim, A. O., Kamocki, K., Fisher, A. J., Gu, Y., Safadi, B., Nikam, S., Hubbard, W. C., Tuder, R. M., Twigg, H. L. 3rd, Presson, R. G., Sethi, S., and Petrache, I. (2011). Lung endothelial monocyte-activating protein 2 is a mediator of cigarette smoke-induced emphysema in mice. *J. Clin. Invest.* 121, 2470–2479.
- Cosio, M. G. (2004). Autoimmunity, T-cells and STAT-4 in the pathogenesis of chronic obstructive pulmonary disease. *Eur. Respir. J.* 24, 3–5.
- Cosio, M. G., Saetta, M., and Agusti, A. (2009). Immunologic aspects of chronic obstructive pulmonary disease. *N. Engl. J. Med.* 360, 2445–2454.
- Couraud, S., Zalzman, G., Milleron, B., Morin, F., and Souquet, P. J. (2012). Lung cancer in never smokers—A review. *Eur. J. Cancer* 48, 1299–1311.
- Cuzic, S., Bosnar, M., Dominis Kramaric, M., Ferencic, Z., Markovic, D., Glojnaric, I., and Erakovic Haber, V. (2012). Claudin-3 and clara cell 10kDa protein as early signals of cigarette smoke-induced epithelial injury along alveolar ducts. *Toxicol. Pathol.* PMID: 22659244. [Epub ahead of print].
- Decramer, M., Janssens, W., and Miravittles, M. (2012). Chronic obstructive pulmonary disease. *Lancet* 379, 1341–1351.
- Dougan, M., Li, D., Neuberg, D., Mihm, M., Googe, P., Wong, K. K., and Dranoff, G. (2011). A dual role for the immune response in a mouse model of inflammation-associated lung cancer. *J. Clin. Invest.* 121, 2436–2446.
- Doz, E., Noulain, N., Boichot, E., Guenon, I., Fick, L., Le Bert, M., Lagente, V., Ryffel, B., Schnyder, B., Quesniaux, V. F., and Couillin, I. (2008). Cigarette smoke-induced pulmonary inflammation is TLR4/MyD88 and IL-1R1/MyD88 signaling dependent. *J. Immunol.* 180, 1169–1178.
- Eltom, S., Stevenson, C. S., Rastrick, J., Dale, N., Raemdonck, K., Wong, S., Catley, M. C., Belvisi, M. G., and Birrell, M. A. (2011). P2X7 receptor and caspase 1 activation are central to airway inflammation observed after exposure to tobacco smoke. *PLoS ONE* 6:e24097. doi: 10.1371/journal.pone.0024097
- Geraghty, P., Dabo, A. J., and D'armiento, J. (2011). TLR4 protein contributes to cigarette smoke-induced matrix metalloproteinase-1 (MMP-1) expression in chronic obstructive pulmonary disease. *J. Biol. Chem.* 286, 30211–30218.
- Grumelli, S., Corry, D. B., Song, L. Z., Song, L., Green, L., Huh, J., Hacken, J., Espada, R., Bag, R., Lewis, D. E., and Kheradmand, F. (2004). An immune basis for lung parenchymal destruction in chronic obstructive pulmonary disease and emphysema. *PLoS Med.* 1:e8. doi: 10.1371/journal.pmed.0010008
- Guo, Y., Gong, Y., Shi, G., Yang, K., Pan, C., Li, M., Li, Q., Cheng, Q., Dai, R., Fan, L., and Wan, H. (2012). Single-nucleotide polymorphisms in the TSPYL-4 and NT5DC1 genes are associated with susceptibility to chronic obstructive pulmonary disease. *Mol. Med. Report* 6, 631–638.
- Gwilt, C. R., Donnelly, L. E., and Rogers, D. F. (2007). The non-neuronal cholinergic system in the airways: an unappreciated regulatory role in pulmonary inflammation? *Pharmacol. Ther.* 115, 208–222.
- HHS. (2006). *The Health Consequences of Involuntary Exposure to Tobacco Smoke: A Report of the Surgeon General*. Atlanta, GA: U.S. Department of Health and Human Services, Centers for Disease Control and Prevention, Coordinating Center for Health Promotion, National Center for Chronic Disease Prevention and Health Promotion, Office on Smoking and Health.
- Howard, D. J., Briggs, L. A., and Pritsos, C. A. (1998). Oxidative DNA damage in mouse heart, liver, and lung tissue due to acute side-stream tobacco smoke exposure. *Arch. Biochem. Biophys.* 352, 293–297.
- Hunt, J. M., and Tuder, R. (2012). Alpha 1 anti-trypsin: one protein, many functions. *Curr. Mol. Med.* 12, 827–835.
- Hwang, J. W., Rajendrasozhan, S., Yao, H., Chung, S., Sundar, I. K., Huyck, H. L., Pryhuber, G. S., Kinnula, V. L., and Rahman, I. (2011). FOXO3 deficiency leads to increased susceptibility to cigarette smoke-induced inflammation, airspace enlargement, and chronic obstructive pulmonary disease. *J. Immunol.* 187, 987–998.
- IARC. (2004). Tobacco smoke and involuntary smoking. *IARC Monogr. Eval. Carcinog. Risks Hum.* 83, 1–1438.
- Jinot, J., and Bayard, S. (1994). Respiratory health effects of passive smoking: EPA's weight-of-evidence analysis. *J. Clin. Epidemiol.* 47, 339–349. discussion: 351–333.
- Jinushi, M., Nakazaki, Y., Dougan, M., Carrasco, D. R., Mihm, M., and Dranoff, G. (2007). MFG-E8-mediated uptake of apoptotic cells by APCs links the pro- and anti-inflammatory activities of GM-CSF. *J. Clin. Invest.* 117, 1902–1913.
- Karin, M. (2006). Nuclear factor- κ B in cancer development and progression. *Nature* 441, 431–436.
- Karin, M., Cao, Y., Greten, F. R., and Li, Z. W. (2002). NF- κ B in cancer: from innocent bystander to major culprit. *Nat. Rev. Cancer* 2, 301–310.
- Keohavong, P., Kahkonen, B., Kinchington, E., Yin, J., Jin, J., Liu, X., Siegfried, J. M., and Di, Y. P. (2011). K-ras mutations in lung tumors from NNK-treated mice with lipopolysaccharide-elicited lung inflammation. *Anticancer Res.* 31, 2877–2882.
- Kim, S. Y., Lee, J. H., Huh, J. W., Ro, J. Y., Oh, Y. M., Lee, S. D., An, S., and Lee, Y. S. (2011). Cigarette smoke induces Akt protein degradation by the ubiquitin-proteasome system. *J. Biol. Chem.* 286, 31932–31943.
- King, B., Dube, S., Kaufmann, R., Shaw, L., and Pechacek, T. (2011). Vital signs: current cigarette smoking among adults aged = 18 years—United States, 2005–2010 (Reprinted from MMWR 60, 1207–1212, 2011). *JAMA* 306, 1857–1860.
- Kirkham, P. A., Caramori, G., Casolari, P., Papi, A. A., Edwards, M., Shamji, B., Triantaphyllopoulos, K., Hussain, F., Pinart, M., Khan, Y., Heinemann, L., Stevens, L., Yeadon, M., Barnes, P. J., Chung, K. F., and Adcock, I. M. (2011). Oxidative stress-induced antibodies to carbonyl-modified protein correlate with severity of chronic obstructive pulmonary disease. *Am. J. Respir. Crit. Care Med.* 184, 796–802.
- Klut, M. E., Doerschuk, C. M., Van Eeden, S. F., Burns, A. R., and Hogg, J. C. (1993). Activation of neutrophils within pulmonary microvessels of rabbits exposed to cigarette smoke. *Am. J. Respir. Cell Mol. Biol.* 9, 82–89.
- Kuhn, C. 3rd, Homer, R. J., Zhu, Z., Ward, N., Flavell, R. A., Geba, G. P., and Elias, J. A. (2000). Airway hyperresponsiveness and airway obstruction in transgenic mice. Morphologic correlates in mice overexpressing interleukin (IL)-11 and IL-6 in the lung. *Am. J. Respir. Cell Mol. Biol.* 22, 289–295.
- Lappalainen, U., Whitsett, J. A., Wert, S. E., Tichelaar, J. W., and Bry, K. (2005). Interleukin-1 β causes pulmonary inflammation, emphysema, and airway remodeling in the adult murine lung. *Am. J. Respir. Cell Mol. Biol.* 32, 311–318.
- Lee, S. H., Goswami, S., Grudo, A., Song, L. Z., Bandi, V., Goodnight-White, S., Green, L., Hacken-Bitar, J., Huh, J., Bakaev, F., Coxson, H. O., Cogswell, S., Storness-Bliss, C., Corry, D. B., and Kheradmand, F. (2007). Antiasthma autoimmunity in tobacco smoking-induced emphysema. *Nat. Med.* 13, 567–569.
- Li, J., Dai, A., Hu, R., Zhu, L., and Tan, S. (2010). Positive correlation between PPAR γ /PGC-1 α and gamma-GCS in lungs of rats and patients with chronic obstructive pulmonary disease. *Acta Biochim. Biophys. Sin. (Shanghai)* 42, 603–614.
- Luo, J. L., Maeda, S., Hsu, L. C., Yagita, H., and Karin, M. (2004). Inhibition of NF- κ B in cancer cells converts inflammation-induced tumor growth mediated by TNF α to TRAIL-mediated

- tumor regression. *Cancer Cell* 6, 297–305.
- MacNee, W. (2001). Oxidative stress and lung inflammation in airways disease. *Eur. J. Pharmacol.* 429, 195–207.
- Maes, T., Bracke, K. R., Vermaelen, K. Y., Demedts, I. K., Joos, G. F., Pauwels, R. A., and Brusselle, G. G. (2006). Murine TLR4 is implicated in cigarette smoke-induced pulmonary inflammation. *Int. Arch. Allergy Immunol.* 141, 354–368.
- Motz, G. T., Eppert, B. L., Sun, G., Wesselkamper, S. C., Linke, M. J., Deka, R., and Borchers, M. T. (2008). Persistence of lung CD8 T cell oligoclonal expansions upon smoking cessation in a mouse model of cigarette smoke-induced emphysema. *J. Immunol.* 181, 8036–8043.
- Pappas, R. S. (2011). Toxic elements in tobacco and in cigarette smoke: inflammation and sensitization. *Metalomics* 3, 1181–1198.
- Pera, T., Zuidhof, A., Valadas, J., Smit, M., Schoemaker, R. G., Gosens, R., Maarsingh, H., Zaagsma, J., and Meurs, H. (2011). Tiotropium inhibits pulmonary inflammation and remodelling in a guinea pig model of COPD. *Eur. Respir. J.* 38, 789–796.
- Philip, M., Rowley, D. A., and Schreiber, H. (2004). Inflammation as a tumor promoter in cancer induction. *Semin. Cancer Biol.* 14, 433–439.
- Podowski, M., Calvi, C., Metzger, S., Misono, K., Poonyagariyagorn, H., Lopez-Mercado, A., Ku, T., Lauer, T., Mcgrath-Morrow, S., Berger, A., Cheadle, C., Tuder, R., Dietz, H. C., Mitzner, W., Wise, R., and Neptune, E. (2012). Angiotensin receptor blockade attenuates cigarette smoke-induced lung injury and rescues lung architecture in mice. *J. Clin. Invest.* 122, 229–240.
- Reddy, N. M., Vegiraju, S., Irving, A., Paun, B. C., Luzina, I. G., Atamas, S. P., Biswal, S., Ana, N. A., Mitzner, W., and Reddy, S. P. (2012). Targeted deletion of Jun/AP-1 in alveolar epithelial cells causes progressive emphysema and worsens cigarette smoke-induced lung inflammation. *Am. J. Pathol.* 180, 562–574.
- Rennard, S. I., Togo, S., and Holz, O. (2006). Cigarette smoke inhibits alveolar repair: a mechanism for the development of emphysema. *Proc. Am. Thorac. Soc.* 3, 703–708.
- Sebelius, K. (2011). NTP 12th report on carcinogens. *Rep. Carcinog.* 12, iii–499.
- Sekhon, H. S., Jia, Y., Raab, R., Kuryatov, A., Pankow, J. F., Whitsett, J. A., Lindstrom, J., and Spindel, E. R. (1999). Prenatal nicotine increases pulmonary alpha7 nicotinic receptor expression and alters fetal lung development in monkeys. *J. Clin. Invest.* 103, 637–647.
- Sekhon, H. S., Keller, J. A., Proskocil, B. J., Martin, E. L., and Spindel, E. R. (2002). Maternal nicotine exposure upregulates collagen gene expression in fetal monkey lung. Association with alpha7 nicotinic acetylcholine receptors. *Am. J. Respir. Cell Mol. Biol.* 26, 31–41.
- Shan, M., Yuan, X., Song, L. Z., Roberts, L., Zarinkamar, N., Seryshev, A., Zhang, Y., Hilsenbeck, S., Chang, S. H., Dong, C., Corry, D. B., and Kheradmand, F. (2012). Cigarette smoke induction of osteopontin (SPP1) mediates T(H)17 inflammation in human and experimental emphysema. *Sci. Transl. Med.* 4, 117ra119.
- Shevach, E. M. (2000). Regulatory T cells in autoimmunity. *Annu. Rev. Immunol.* 18, 423–449.
- Talhout, R., Schulz, T., Florek, E., van Benthem, J., Wester, P., and Opperhuizen, A. (2011). Hazardous compounds in tobacco smoke. *Int. J. Environ. Res. Public Health* 8, 613–628.
- Tang, K., Rossiter, H. B., Wagner, P. D., and Breen, E. C. (2004). Lung-targeted VEGF inactivation leads to an emphysema phenotype in mice. *J. Appl. Physiol.* 97, 1559–1566. discussion: 1549.
- Tollefson, A. K., Oberley-Deegan, R. E., Butterfield, K. T., Nicks, M. E., Weaver, M. R., Remigio, L. K., Decsesznak, J., Chu, H. W., Bratton, D. L., Riches, D. W., and Bowler, R. P. (2010). Endogenous enzymes (NOX and ECSOD) regulate smoke-induced oxidative stress. *Free Radic. Biol. Med.* 49, 1937–1946.
- Tsuji, H., Fujimoto, H., Matsuura, D., Nishino, T., Lee, K. M., Renne, R., and Yoshimura, H. (2011). Comparison of mouse strains and exposure conditions in acute cigarette smoke inhalation studies. *Inhal. Toxicol.* 23, 602–615.
- van Antwerpen, V. L., Theron, A. J., Richards, G. A., Steenkamp, K. J., van der Merwe, C. A., van der Walt, R., and Anderson, R. (1995). Vitamin, E, pulmonary functions, and phagocyte-mediated oxidative stress in smokers and nonsmokers. *Free Radic. Biol. Med.* 18, 935–941.
- van der Strate, B. W., Postma, D. S., Brandsma, C. A., Melgert, B. N., Luinge, M. A., Geerlings, M., Hylkema, M. N., van den Berg, A., Timens, W., and Kerstjens, H. A. (2006). Cigarette smoke-induced emphysema: a role for the B cell? *Am. J. Respir. Crit. Care Med.* 173, 751–758.
- Vanaudenaerde, B. M., Verleden, S. E., Vos, R., de Vleeschouwer, S. I., Willems-Widyastuti, A., Geenens, R., Van Raemdonck, D. E., Dupont, L. J., Verbeke, E. K., and Meyts, I. (2011). Innate and adaptive interleukin-17-producing lymphocytes in chronic inflammatory lung disorders. *Am. J. Respir. Crit. Care Med.* 183, 977–986.
- Vargas-Rojas, M. I., Ramirez-Venegas, A., Limon-Camacho, L., Ochoa, L., Hernandez-Zenteno, R., and Sansores, R. H. (2011). Increase of Th17 cells in peripheral blood of patients with chronic obstructive pulmonary disease. *Respir. Med.* 105, 1648–1654.
- Vecchio, D., Arezzini, B., Pecorelli, A., Valacchi, G., Martorana, P. A., and Gardi, C. (2010). Reactivity of mouse alveolar macrophages to cigarette smoke is strain dependent. *Am. J. Physiol. Lung Cell. Mol. Physiol.* 298, L704–L713.
- Vlahos, R., Bozinovski, S., Chan, S. P., Ivanov, S., Linden, A., Hamilton, J. A., and Anderson, G. P. (2010). Neutralizing granulocyte/macrophage colony-stimulating factor inhibits cigarette smoke-induced lung inflammation. *Am. J. Respir. Crit. Care Med.* 182, 34–40.
- Witschi, H., Espiritu, I., Ly, M., and Uyeminami, D. (2005). The chemopreventive effects of orally administered dexamethasone in Strain A/J mice following cessation of smoke exposure. *Inhal. Toxicol.* 17, 119–122.
- Xiao, J., Wang, K., Feng, Y. L., Chen, X. R., Xu, D., and Zhang, M. K. (2011). Role of extracellular signal-regulated kinase 1/2 in cigarette smoke-induced mucus hypersecretion in a rat model. *Chin. Med. J. (Engl.)* 124, 3327–3333.
- Xiong, Z., Leme, A. S., Ray, P., Shapiro, S. D., and Lee, J. S. (2011). CX3CR1+ lung mononuclear phagocytes spatially confined to the interstitium produce TNF-alpha and IL-6 and promote cigarette smoke-induced emphysema. *J. Immunol.* 186, 3206–3214.
- Young, R. P., Hopkins, R. J., Christmas, T., Black, P. N., Metcalf, P., and Gamble, G. D. (2009). COPD prevalence is increased in lung cancer, independent of age, sex and smoking history. *Eur. Respir. J.* 34, 380–386.
- Zhao, J., Harper, R., Barchowsky, A., and Di, Y. P. (2007). Identification of multiple MAPK-mediated transcription factors regulated by tobacco smoke in airway epithelial cells. *Am. J. Physiol. Lung Cell. Mol. Physiol.* 293, L480–L490.
- Zhou, L., Chong, M. M., and Littman, D. R. (2009). Plasticity of CD4+ T cell lineage differentiation. *Immunity* 30, 646–655.

Conflict of Interest Statement: The authors declare that the research was conducted in the absence of any commercial or financial relationships that could be construed as a potential conflict of interest.

Received: 14 June 2012; accepted: 09 August 2012; published online: 28 August 2012.

Citation: Birru RL and Di YP (2012) Pathogenic mechanism of second hand smoke induced inflammation and COPD. *Front. Physiol.* 3:348. doi: 10.3389/fphys.2012.00348

This article was submitted to *Frontiers in Respiratory Physiology*, a specialty of *Frontiers in Physiology*.

Copyright © 2012 Birru and Di. This is an open-access article distributed under the terms of the Creative Commons Attribution License, which permits use, distribution and reproduction in other forums, provided the original authors and source are credited and subject to any copyright notices concerning any third-party graphics etc.