

ORIGINAL ARTICLE

Rare structural variants found in attention-deficit hyperactivity disorder are preferentially associated with neurodevelopmental genes

J Elia^{1,2,12}, X Gai^{3,12}, HM Xie³, JC Perin³, E Geiger⁴, JT Glessner⁵, M D'arcy³, R deBerardinis¹, E Frackelton⁵, C Kim⁵, F Lantieri⁴, BM Muganga³, L Wang³, T Takeda¹, EF Rappaport⁶, SFA Grant^{4,5,7}, W Berrettini², M Devoto^{4,7,8,9}, TH Shaikh^{4,7}, H Hakonarson^{5,7,10} and PS White^{3,7,11}

¹Department of Child and Adolescent Psychiatry, The Children's Hospital of Philadelphia, Philadelphia, PA, USA; ²Department of Psychiatry, University of Pennsylvania School of Medicine, Philadelphia, PA, USA; ³Center for Biomedical Informatics, The Children's Hospital of Philadelphia, Philadelphia, PA, USA; ⁴Division of Genetics, The Children's Hospital of Philadelphia, Philadelphia, PA, USA; ⁵Center for Applied Genomics, The Children's Hospital of Philadelphia, Philadelphia, PA, USA; ⁶Joseph Stokes Jr Research Institute, The Children's Hospital of Philadelphia, Philadelphia, PA, USA; ⁷Department of Pediatrics, University of Pennsylvania School of Medicine, Philadelphia, PA, USA; ⁸Department of Biostatistics and Epidemiology, University of Pennsylvania School of Medicine, Philadelphia, PA, USA; ⁹Dipartimento di Medicina Sperimentale, University La Sapienza, Rome, Italy; ¹⁰Division of Pulmonary Medicine, The Children's Hospital of Philadelphia, Philadelphia, PA, USA and ¹¹Division of Oncology, The Children's Hospital of Philadelphia, Philadelphia, PA, USA

Attention-deficit/hyperactivity disorder (ADHD) is a common and highly heritable disorder, but specific genetic factors underlying risk remain elusive. To assess the role of structural variation in ADHD, we identified 222 inherited copy number variations (CNVs) within 335 ADHD patients and their parents that were not detected in 2026 unrelated healthy individuals. Although no excess CNVs, either deletions or duplications, were found in the ADHD cohort relative to controls, the inherited rare CNV-associated gene set was significantly enriched for genes reported as candidates in studies of autism, schizophrenia and Tourette syndrome, including *A2BP1*, *AUTS2*, *CNTNAP2* and *IMMP2L*. The ADHD CNV gene set was also significantly enriched for genes known to be important for psychological and neurological functions, including learning, behavior, synaptic transmission and central nervous system development. Four independent deletions were located within the protein tyrosine phosphatase gene, *PTPRD*, recently implicated as a candidate gene for restless legs syndrome, which frequently presents with ADHD. A deletion within the glutamate receptor gene, *GRM5*, was found in an affected parent and all three affected offspring whose ADHD phenotypes closely resembled those of the *GRM5* null mouse. Together, these results suggest that rare inherited structural variations play an important role in ADHD development and indicate a set of putative candidate genes for further study in the etiology of ADHD.

Molecular Psychiatry (2010) 15, 637–646; doi:10.1038/mp.2009.57; published online 23 June 2009

Keywords: CNV; ADHD; *GRM5*; *GRM7*; *PTPRD*; autism; schizophrenia

Introduction

Attention-deficit/hyperactivity disorder (ADHD), the most common neuropsychiatric disorder in children, with a 5.2% worldwide pooled prevalence rate,¹

causes significant academic, behavioral and social impairment throughout the life span.^{2,3} The phenotype consists of extreme manifestations of continuous traits, including hyperactivity, impulsivity, and dysfunction in executive and self-regulatory skills that involve working memory, temporal organization, planning, organizing, maintaining focus, effort and motivation.^{4,5}

Brain studies of patients with ADHD have shown abnormalities in frontal-striatal and cerebellar circuitry.^{6,7} Although dopaminergic and noradrenergic medications are clinically effective,⁸ animal models provide support for the involvement of additional molecular pathways.⁹ Twin studies estimate a heritability of up to 90%,¹⁰ indicating a substantial genetic contribution. However, genetic association studies

Correspondence: Dr H Hakonarson, Division of Pulmonary Medicine, The Children's Hospital of Philadelphia, 34th St and Civic Center Blvd, Rm 1216E ARC, Philadelphia, PA 19104-4318, USA.

E-mail: hakonarson@chop.edu or

Dr PS White, Division of Pulmonary Medicine, The Children's Hospital of Philadelphia, 34th St and Civic Center Blvd, Rm 1407 CHOP North, Philadelphia, PA 19104-4318, USA.

E-mail: white@genome.chop.edu

¹²These authors contributed equally to this work.

Received 4 December 2008; revised 8 May 2009; accepted 26 May 2009; published online 23 June 2009

thus far have not identified any genes definitively conferring major risk.^{10,11} ADHD comorbidity occurs in many neuropsychiatric disorders, including autism, Tourette syndrome and in children with schizophrenic parents.^{12,13}

Recently, investigations of autism^{14–16} and schizophrenia^{17–21} have implicated *de novo* and/or rare copy number variations (CNVs) as being potentially pathogenic in these disorders. These findings are consistent with a genetic model where any of a large number of individually rare mutations of recent origin, and affecting a substantial number of genes involved in neurodevelopment, can contribute to disease predisposition. Given the highly heritable and variable nature of ADHD, we therefore hypothesized that individually rare and inherited structural variants might contribute to disease risk in ADHD, and that such variants are likely enriched within genes involved in neurological processes and neuropsychiatric disease. To our knowledge, this is the first report investigating the role of structural variants in ADHD.

Materials and methods

ADHD population

Attention-deficit/hyperactivity disorder families were recruited from pediatric and behavioral health clinics in the Philadelphia area. Inclusion criteria included families of European descent with an ADHD proband (age 6–18). Exclusionary criteria included prematurity (<36 weeks), mental retardation, major medical and neurological disorders, pervasive developmental disorder, psychoses and major mood disorders. Blood collected from ADHD families was sent to the Rutgers University Cell and DNA Repository in New Jersey where lymphoblastoid cell lines were developed. Subsequently, DNA was extracted and returned to our laboratory for genotyping.

Healthy control population

Healthy control individuals were recruited from the Philadelphia region through the Hospital's Health Care Network, including four primary care clinics and several group practices and outpatient practices that performed well child visits. Eligibility criteria for this study included both of the following: disease-free children (age range: 6–18 years) and parents of these children who had high-quality, genome-wide genotyping data from blood samples with no serious underlying medical disorder, including, but not limited to neurodevelopmental disorders, cancer, chromosomal abnormalities and known metabolic or genetic disorders. DNA samples from a small set of parents of the participating children were also genotyped and used to assess CNV heritability patterns. A total of 2026 individuals passed all quality control measures and qualified for the study. All participants and/or their parents signed an informed consent permitting the use of their genotypes and health-care records for the study. Ancestry informative markers available on the HumanHap550

BeadChip²² were used to evaluate these 2026 participants to confirm ethnicity.

Measures

A child psychiatrist assessed diagnostic status of ADHD probands by administering the Schedule for Affective Disorders and Schizophrenia for School Age Children -IV Revised (K-SADS P-IVR).²³ Intraclass correlations between raters for the diagnostic symptoms of the major disorders were assessed through videotape reviews. Parental ADHD was assessed using the ADHD Self-Report Scale.^{24,25} Parents provided consent and children assent.

Genotyping

All samples were uniformly genotyped at the Center for Applied Genomics at the Children's Hospital of Philadelphia. DNA samples were surveyed for quality both by optical density spectrophotometry and the PicoGreen assay (Molecular Probes, Eugene, OR, USA).²⁶ Samples judged to be of sufficient quality for genotyping were assayed on the Illumina Infinium II HumanHap550 BeadChip (Illumina, San Diego, CA, USA) as previously described.²⁷ As BeadChip images were collected, intensity values were determined for all instances of each bead type, and data files were created that summarized intensity values for each bead type. A bead pool manifest was loaded into BeadStudio along with intensity data for the samples. BeadStudio uses a normalization algorithm to minimize BeadChip to BeadChip variability. Once the normalization was complete, a clustering algorithm was used to evaluate cluster positions for each locus and assign individual genotypes. logR ratios (LRRs) and B allele frequencies were calculated for every single nucleotide polymorphism (SNP) based on these clusters and the genotype of each SNP.

CNV detection and analysis

The Illumina BeadStudio 3.0 software package was used for initial CNV detection analysis. LRRs and B allele frequencies were first exported from BeadStudio. LRR values were used as an additional sample-wide genotype quality control measure, and LRRs with a standard deviation above 0.35 were excluded from the study. Chromosomes were segmented on the basis of LRRs, using the circular binary segmentation algorithm implemented in the R statistical package module DNACopy 1.7 (<http://www.bioconductor.org/>). We used the reference clusters for each SNP that were supplied by Illumina from a set of HapMap samples. As these samples are a mixture of males and females, the Log R Ratio distribution for the X chromosome differs from that of the autosomal chromosomes. Accordingly, differing thresholds were chosen based on known samples with X chromosome deletions and duplications. For autosomal chromosomes, we used threshold of acceptance values of -2 , -0.3 and 0.25 for the mean LRRs of potential homozygous deletions, hemizygous deletions and duplications, respectively. For males, X chromosome thresholds of -2 and 0.1

were used for hemizygous deletions and duplications, respectively. For females, X chromosome thresholds of -1.5 , -0.1 and 0.6 were used for homozygous deletions, hemizygous deletions and duplications, respectively. Initial CNV calls were then further filtered by their B allele frequency distribution patterns. Autosomal and female chromosome X B allele frequency patterns for duplications and homozygous deletions were required to fit a three-copy mode more closely than a two-copy mode. In addition, paucity of AB alleles in the segment was a requirement for calling the segment a hemizygous deletion. For comparative purposes, two CNVs were considered the same or non-unique if their overlapping region contained at least 80% of the SNPs comprising each CNV. We limited the CNV set for consideration to those spanning ≥ 10 consecutive SNPs after conducting a trial of > 200 experimentally validated CNVs that showed $> 99\%$ accuracy for our CNV prediction method using this threshold. In addition, all CNVs meeting quality and experimental design metrics were independently assessed by inspection of each BeadStudio visualization.

Literature analysis

Literature analysis used the set of 175 non-olfactory receptor genes overlapping CNVs unique to ADHD probands relative to controls. Literature records associated with these genes were assessed by an expert reviewer to determine whether genes had been previously suggested as candidate genes in neuropsychiatric or neural functioning disorders. Accepted evidence was restricted to significant or suggestive findings in genetic association or structural variation studies performed either as gene-specific surveys or genome-wide. To confirm the literature review process, we determined whether biomedical literature mentioning the ADHD CNV gene set preferentially referred to other neuropsychiatric disorders. As the

ADHD gene set was acquired using an independent genetic technique that had no memory of prior studies, a null hypothesis would predict that MEDLINE abstracts mentioning the 175 ADHD genes would not be enriched for terms related to autism or schizophrenia, the two disorders comorbid with ADHD with sufficient literature sampling sizes. For this process, sets of genes co-mentioned with terms related to autism or schizophrenia in MEDLINE abstracts and abstract metadata were identified, using the literature mining tool FABLE (<http://fable.chop.edu>), the Phenopedia tool of the gene resource HuGE Navigator (<http://hugenavigator.net/>), and for autism queries, the autism gene database AutDB (<http://www.mindspec.org/autdb.html>). FABLE query terms used were 'autism' and/or 'schizophrenia', with or without terms relating to structural variation (see Table 1). HuGE Navigator concepts used were *Autistic Disorder*, *Schizophrenia*, and for controls, *Meningioma*, *Astrocytoma*, *Parkinson Disease*, and *Alzheimer Disease*. For AutDB, we used all genes listed as candidates as the test group. For all three resources, the sets of genes implicated in the queried diseases were tested for significantly enriched representation of ADHD CNV genes using the single-sample proportions test.

In silico functional analysis

Functional and pathway analyses were carried out using the Ingenuity Pathway Analysis software package (<http://www.ingenuity.com>). Gene Ontology (GO) analysis was carried out using the Explain software from Biobase, as part of the Biobase Knowledgebase (http://bkl.biobase.de/cgi-bin/bkl/idb/1.0/login.cgi?previous_url=searchengine/start.cgi). For both sets of analyses, RefSeq genes overlapping the rare and inherited ADHD CNVs were extracted and input into the requisite pathway analysis models.

Table 1 Enrichment of ADHD CNV genes in autism and schizophrenia candidate genes

Resource	Query	Genes matching query	ADHD genes in query	Z-score	P-value
FABLE	Autism	1003	10	1.14	0.127
FABLE	Schizophrenia	2516	29	13.19	< 0.001
FABLE	Autism OR schizophrenia	2857	32	11.66	< 0.001
FABLE	Autism AND CNV ^a	438	6	13.35	< 0.001
FABLE	Schizophrenia AND CNV ^a	998	11	5.73	< 0.001
FABLE	Autism OR schizophrenia AND CNV ^a	1259	16	14.81	< 0.001
HuGE navigator	Autistic disorder	111	1	INS ^b	INS ^b
HuGE navigator	Schizophrenia	505	9	24.82	< 0.001
HuGE navigator	Autistic disorder OR schizophrenia	561	9	20.46	< 0.001
AutDB	All genes	137	5	42.25	< 0.001
SchizophreniaGene	All genes	762	10	12.93	< 0.001

Abbreviations: ADHD, attention-deficit/hyperactivity disorder; CNV, copy number variation.

^aQuery terms representing the concept of CNV: (genetics OR genomics) AND ('structural variation' OR 'copy number' OR association OR deletion OR duplication OR translocation).

^bINS, insufficient sample size to determine significance.

Validation

Fluorescence in situ hybridization. Fluorescence *in situ* hybridization (FISH) validation of the *GRM5* deletion was performed on metaphase spreads prepared from the participant-derived lymphoblastoid cell lines using standard methodology. Chromosomes were visualized by counter staining with 4,6-diamidino-2-phenylindole. FISH was performed using fosmid W12-2219g4 and BAC RP11-697e14. FISH analysis was carried out as previously described.²⁸ Bacterial artificial chromosomes and fosmids were isolated using the UltraClean plasmid kit (MoBio Labs Inc., Carlsbad, CA, USA) and probes were labeled with Spectrum Red or Green (Abbott Molecular Inc., IL, USA) by nick translation. FISH images were captured using MacProbe software (Applied Imaging, San Jose, CA, USA).

Real-time quantitative PCR. Primers and probes used to detect *PTPRD* CNVs were designed using Primer Express software (Applied Biosystems, Foster City CA, USA). Primers were purchased from Integrated DNA Technologies (Coralville, IA, USA). Primer sequences are as follows: F primer: 5'-ACATTTTCAG AATATCCATCCTTTGG-3'; R primer: 5'-TGCTAATTC GTCCCAGAACGA-3'. Probes were purchased from Operon Biotechnologies, Inc. (Huntsville, AL, USA). The probe 5'-TGGCAGCCAAGCTAAAGCAAA TCCTTG-3' was labeled with FAM (6-carboxy-fluorescein) along with a quencher (BHQ 1; Biosearch Technologies, Novato, CA, USA). Dilutions of control gDNA of 40, 20, 10, 5 and 2.5 ng μl^{-1} were used as comparators to test DNA samples diluted to ~ 10 ng μl^{-1} . All DNAs, probes and primers were diluted in low EDTA TE buffer. Reactions were run on the ABI 7500 Fast Real-time PCR system (Applied Biosystems) using the following cycling parameters: one cycle at 95 °C for 20 s, followed by 40 cycles at 95 °C for 3 s and 60 °C for 30 s. Each reaction was carried out in a total volume of 20 μl containing 1 \times Taqman Fast Universal PCR Master mix, 900 nM of each primer and 250 nM probe. A total of 2.5 μl of DNA was added to each reaction. Reactions were carried out in triplicate. Quantitative PCR analysis software supplied by the manufacturer (Applied Biosystems) was used to calculate standard curves and quantify samples. A control probe set within the albumin gene was used as a reference to determine copy number. A ratio of 1 for assay/albumin was viewed as normal copy number.

Results

The ADHD cohort comprised of 335 complete parent-child trios of European descent recruited from pediatric and behavioral clinics that passed genotype and CNV analysis quality metrics (see Methods). A set of 2026 ethnically matched, disease-free children was used as a healthy control group. All samples were genotyped using the Illumina HumanHap550K Bead-

Chip and a single consistent protocol. Genotype data were uniformly analyzed for CNVs using Illumina's BeadStudio software in combination with a customized adaptation of the circular binary segmentation algorithm.²⁹

Comparison of the CNV sets identified in the 335 probands and the healthy controls showed comparable overall frequencies. ADHD patients had a mean of 27.4 CNVs vs 26.9 for healthy controls ($P=0.28$). No significant differences were seen for deletions ($P=0.67$) or duplications ($P=0.33$). Moreover, no difference was seen in CNV size between the patient and control groups, either overall ($P=0.91$), or for duplications ($P=0.43$) or deletions ($P=0.12$).

We focused on rare inherited variants matching the following criteria: size spanning ≥ 10 consecutive SNPs for deletions and ≥ 20 SNPs for duplications, and present in at least one parent along with one or more related probands but not in the healthy control set. A total of 222 CNVs (158 deletions and 64 duplications) from 154 probands met these criteria (Supplementary Table S1). The median variant size was 102 kb (range from 7.75 to 1775 kb) with 116 of the CNVs (52%) overlapping one or more genes. The CNVs encompassed or overlapped 229 distinct genes, 23 of which were associated with CNVs from multiple individuals. The largest family of genes affected was the olfactory receptor superfamily (54 genes, including 35 genes associated with a single duplication). Numerous recent studies have shown that olfactory receptors are rapidly evolving, mainly because of an unusually high rate of structural variation and close association of many family members with segmental duplications.³⁰⁻³² As these genes are overrepresented in our CNV set and present a skewed distribution that might bias our ability to detect pathway enrichment, these genes were removed from subsequent analyses. This reduced our ADHD CNV gene set to 175 genes.

To determine whether the ADHD gene set preferentially contained genes of neurological significance, we first looked for evidence in the literature for prior implication of these genes in neuropsychiatric disorders. An independent, systematic assessment of MEDLINE abstracts, HUGE Navigator, the autism gene database AutSDb and the candidate gene database SchizophreniaGene showed that genes implicated in autism and/or schizophrenia in any of these resources were significantly enriched in ADHD CNV genes (Table 1), but not for other brain-related disorders (Supplementary Table S2). Manual review of literature associated with the 175 genes determined that at least 22 (28 total CNVs) of these genes were previously implicated by genetic studies in various neurological and neuropsychiatric disorders (Tables 2 and 3), including Tourette syndrome (two genes), autism (four genes) and schizophrenia (15 genes). Furthermore, eight of these 22 genes (11 total CNVs) have been very recently identified in structural variation studies carried out on autism and schizophrenia cohorts: *A2BP1*, *PARK2*, *NKAIN2*, *DPP6*, *CNTNAP2*, *IMMP2L*, *AUTS2* and *GRM7*.

Table 2 Genes in ADHD CNVs previously associated with neuropsychiatric and neurological disorders

Gene	Disorder(s) ^a	Genomic reference(s) ^b
<i>A2BP1</i>	<u>Schizophrenia; autism; mental retardation</u>	(15, 21, 55, 56)
<i>APOL4</i>	Schizophrenia	(57)
<i>ATM</i>	Ataxia-telangiectasia; neurodegeneration	(58, 59)
<i>AUTS2</i>	<u>Mental retardation and autism</u>	(60–62)
<i>BLMH</i>	Alzheimer's disease	(63)
<i>CHL1</i>	Schizophrenia	(64)
<i>CHN2</i>	Schizophrenia	(65)
<i>CNTNAP2</i>	<u>Schizophrenia; autism; Tourette syndrome</u>	(17, 58, 66–68)
<i>CPLX2</i>	Schizophrenia	(69)
<i>CTNND2</i>	Mental retardation in cri du chat syndrome	(70)
<i>DPP6</i>	<u>Schizophrenia</u>	(21)
<i>GRM5</i>	Schizophrenia; Fragile X syndrome	(71, 72)
<i>GRM7</i>	<u>Schizophrenia</u>	(19)
<i>IMMP2L</i>	<u>Autism; Tourette syndrome</u>	(73–76)
<i>NKAIN2</i>	<u>Schizophrenia</u>	(21)
<i>PARK2</i>	<u>Schizophrenia</u>	(21)
<i>PDCD10</i>	Cerebral cavernous malformations	(77)
<i>PTPRD</i>	Restless legs syndrome	(33)
<i>RTN4</i>	Schizophrenia	(78)
<i>SEPP1</i>	Schizophrenia	(79)
<i>SERPINI1</i>	Schizophrenia	(80, 81)
<i>TACR3</i>	Schizophrenia	(82)

Abbreviations: ADHD, attention-deficit/hyperactivity disorder; CNVs, copy number variations.

^aUnderlined disorders indicate implication through CNV analysis.

^bReferences in Table 2 are listed in the Supplementary Materials.

We next determined if our ADHD gene set was enriched for particular biological and disease processes. Using Ingenuity Pathway Analysis, the process categories *neurological disease*, *psychological disorders*, *nervous system development and function* and *behavior* were among the most significantly enriched categories in the ADHD gene set, even after application of a multiple test correction (MTC) (Table 4). Four of the six most highly enriched GO Biological Process categories were *learning*, *cell adhesion*, *central nervous system development* and *hindbrain development* (Supplementary Table S3), with *learning* and *cell adhesion* trending towards statistical significance after MTC application. When GO Biological Process analysis was restricted to genes that overlapped only CNV deletions, the classes representing *learning* and *hindbrain development* retained MTC-applied significance (Table 5). ADHD CNV genes associated with learning and cognition included *ATM*, *CTNND2*, *GRM5*, *GRM7*, *PARK2*,

PTPRD and *UNC13C*. As an additional control to show the specificity and independence of the inclusion variables, the same CNV inclusion criteria and analysis strategies were reapplied using a large set of parent-child trios for congenital heart disease. The enriched pathway spectrum was almost entirely dissimilar in the cardiovascular cohort, and no neurological function classes were found significant, even without MTC application.

Several of the most highly enriched GO cellular component terms involved neural functioning, although no terms were sufficiently enriched to pass significance testing after MTC application. Three genes (*GRM5*, *GRM7* and *PARK2*) were associated with the GO term *postsynaptic membrane*, four genes (*GRM5*, *GRM7*, *PARK2* and *UNC13C*) with *synapse*, two genes (*CHN2* and *UNC13C*) with *synaptosome* and two genes (*CPLX2*, *GOSR1*) with the *SNARE complex*, members of which mediate synaptic vesicle fusion.

Two genes, *PTPRD* and *GRM5*, were especially intriguing as putative candidate genes for ADHD. Hemizygous deletions involving the protein tyrosine phosphatase gene, *PTPRD*, were detected in four unrelated ADHD probands, spanning exon 2, exons 3–9, exon 9 and intron 2 of the gene, respectively (Supplementary Figure S1). *PTPRD* CNVs were experimentally validated by quantitative PCR in two probands (Supplementary Table S4). The deletion was confirmed by q-PCR in both probands as well as in a transmitting parent for the one case where DNA was available (130-386-1). Two of the four ADHD probands with *PTPRD* deletions reported symptoms consistent with restless legs syndrome (RLS), which shares high rates of bidirectional comorbidity as well as dopaminergic dysfunction with ADHD.^{33,34} Intriguingly, a recent genome-wide association study has implicated *PTPRD* as a locus for RLS.³⁵ Moreover, genetic variants of *PTPRD* associate with bronchial asthma,³⁶ which is reported to occur at higher rates in children with ADHD,³⁷ and RLS patients have been shown to have increased use of asthma medications.³⁸ Studies of the *PTPRD* gene in mice show high expression in the hippocampus, the only brain region reported to be enlarged in ADHD,³⁹ along with involvement in spatial learning, long-term potentiation and axonal guidance of motor neurons.^{40–42}

Catecholaminergic neurotransmission is widely studied in ADHD and has yielded several candidate genes conferring a small amount of risk, suggesting a potential role for additional neurotransmitter systems. We found a maternally derived *GRM5* CNV in three siblings. Both *GRM5* and *GRM7* (above) belong to the glutamatergic receptor gene family hypothesized to play a role in ADHD.^{43–45} The *GRM5* variant, a hemizygous deletion of 82 kb (11 SNPs; Supplementary Figure S2), showed uniparental inheritance and was experimentally validated by FISH (Figure 1). Neuropsychiatric assessment indicated that all three children in this family, one 18-year-old male and two females with ages 15 and 11, met the criteria for

Table 3 ADHD CNVs within or overlapping genes previously implicated in neuropsychiatric and neurological disorders

Subject	Chromosome	Sequence start	Sequence end	Type ^a	# of base pairs	# of single nucleotide polymorphisms	Gene(s) ^b
130_080_3	2	55088956	55239201	dup	150246	40	<i>RTN4</i>
130_351_3	3	38411	1118424	dup	1080014	268	<i>CHL1; CNTN6</i>
130_068_3	3	7183953	7197236	het	13284	10	<i>GRM7</i> (intronic) <i>ZBBX; SERPINI2; WDR49;</i>
130_237_3	3	168483422	169118601	dup	635180	91	<i>PDCD10; SERPINI1</i>
130_083_3	4	104848417	104972885	dup	124469	25	<i>TACR3</i>
130_231_3	5	11540585	11571704	het	31120	13	<i>CTNND2</i> (intronic)
130_340_3	5	42613316	42859556	dup	246241	22	<i>GHR; SEPP1</i>
130_100_3	5	175136520	175195299	het	58780	30	<i>CPLX2</i>
130_347_3	6	124379082	124526687	het	147606	41	<i>NKAIN2</i> (intronic)
130_213_3	6	162672945	162782313	het	109369	41	<i>PARK2</i> (intronic)
130_220_3	6	162699792	162801747	dup	101956	38	<i>PARK2</i> (intronic)
130_401_3	7	28982601	29309947	dup	327347	155	<i>CHN2</i>
130_386_3	7	69624365	69726112	dup	101748	37	<i>AUTS2</i>
130_197_3	7	110672863	110923287	het	250425	33	<i>IMMP2L</i>
130_285_3	7	146179259	146237754	het	58496	12	<i>CNTNAP2</i> (intronic)
130_249_3	7	153332837	153468471	het	135635	48	<i>DPP6</i>
130_142_3	9	9084805	9178865	het	94061	42	<i>PTPRD</i>
130_386_3	9	9168137	10067180	het	899044	317	<i>PTPRD</i>
130_087_3	9	9985938	10020458	het	34521	10	<i>PTPRD</i> (intronic)
130_093_3	9	10160101	10423023	het	262923	100	<i>PTPRD</i>
130_230_3	11	88269449	88351661	het	82213	11	<i>GRM5</i> (intronic) <i>ACAT1; NPAT; ATM;</i>
130_243_3	11	107520009	107885084	dup	365076	30	<i>C11orf65; KDELC2; EXPH5</i>
130_358_3	16	6072599	6783832	dup	711234	398	<i>A2BP1</i>
130_089_3	16	6753260	6841514	het	88255	44	<i>A2BP1</i> (intronic)
130_214_3	16	7223181	7270339	het	47159	23	<i>A2BP1</i> (intronic)
130_316_3	17	25613604	26191779	dup	578176	46	<i>BLMH</i> (six additional genes)
130_055_3	22	34870070	34916870	het	46801	23	<i>APOL3; APOLA</i>

Abbreviations: ADHD, attention-deficit/hyperactivity disorder; CNVs, copy number variations.

^aType of CNV: het, hemizygous deletion; hom, homozygous deletion; dup, duplication.

^bGene(s) partially or fully contained within the corresponding CNV. The listed CNV is predicted to overlap one or more exons unless indicated by (intronic), where the CNV is predicted to lie entirely within a single intron of the named gene.

ADHD with significant impairment since early childhood. All three children showed some improvement in symptoms with medications but persistent overall dysfunction in academic, social and behavioral spheres in spite of superior IQ levels. Assessment of the mother using the ADHD Self-Report Scale indicated a likelihood of ADHD (scores of 20 for part A and 12 for part B).⁴⁶ The mother, and to a lesser extent, all three children, display problems with spatial orientation, a characteristic also observed in the *GRM5* null mouse.⁴⁷ Intriguingly, *GRM5* null mice also have deficiencies in long-term potentiation⁴⁷ as well as an increase in anxiety-like behavior that can be reduced with *GRM5* antagonists.⁴⁸ ADHD frequently occurs in Fragile X syndrome,⁴⁹ and *GRM5* antagonists have recently been shown to de-repress startle inhibition in Fragile X (*FMR1*) null mice.

In addition to the parent with the *GRM5* variant, we were able to obtain ADHD Self-Report Scales for an additional 20 parents with CNVs overlapping any of the 22 top candidate genes from Table 2 (presented in Supplementary Table S5). Two parents (for genes

IMMP2L and *A2BP1*) met definitive criteria for adulthood ADHD (score of 24 and above on either section A or section B of the ASRS) and three parents (for genes *A2BP1*, *DPP6* and *PTPRD*) were likely to meet criteria (ASRS score 17–23 on either section). However, interpretation of this data is complex owing to our limited knowledge of adult ADHD and its relationship to the childhood form.

Discussion

The CNV-associated gene set identified in our ADHD cohort did not have an excess of deletions or insertions compared with the controls. It was however significantly enriched for genes reported as candidates in other neuropsychiatric disorders and neurodevelopmental pathways.

In addition to *PTPRD* and *GRM5*, several genes in our ADHD CNV gene set are notable, particularly those eight previously reported to have CNVs in another neuropsychiatric disorder (Tables 2 and 3). The *A2BP1* gene, whose protein product binds to the

Table 4 Gene functional categories significantly enriched in ADHD CNVs using ingenuity pathway analysis

Category	Genes in CNVs	Significance ^a	Adjusted significance ^b
<i>Diseases and disorders</i>			
Infectious disease	<i>ATG5, ATM, F7, F10, MC2R, PARK2</i>	7.56×10^{-3}	2.32×10^{-2}
Genetic disorders	<i>ATM, EDARADD, F7, F10, GHR, HNF1B, MC2R, PARK2, SERPINI1, TNFRSF11A, ZCCHC2</i>	1.79×10^{-4}	2.95×10^{-2}
Psychological disorders	<i>APOL4, AUTS2, CHL1, CHN2, CNTNAP2, CPLX2, GRM5, RTN4, SEPP1, SERPINI1, TACR3</i>	5.28×10^{-4}	3.08×10^{-2}
Neurological disease	<i>ACAT1, APOL4, ATM, AUTS2, CHL1, CHN2, CNTNAP2, CPLX2, F7, GRM5, MC2R, PARK2, RTN4, SEPP1, SERPINI1, TACR3</i>	5.28×10^{-4}	4.58×10^{-2}
Hematological disease	<i>ATM, CUBN, F7, F10, MC2R</i>	1.79×10^{-4}	4.58×10^{-2}
Embryonic development	<i>FTO, HNF1B, IRX3, LHX1, MBTPS1, TCF21</i>	8.82×10^{-4}	4.98×10^{-2}
<i>Physiological system development and function</i>			
Hematological system development and function	<i>F7, F10, PRDM1</i>	8.82×10^{-4}	1.55×10^{-2}
Behavior	<i>ATM, CHL1, CTNNA2, CTNND2, GRM5, GRM7, KLHL1, PARK2, PTPRD, SEPP1, UNC13C</i>	1.90×10^{-5}	2.32×10^{-2}
Renal and urological system development and function	<i>CTNND2, F7, GHR, RTN4, SDK1, TCF21</i>	6.32×10^{-4}	3.83×10^{-2}
Nervous system development and function	<i>ATM, CDH4, CHL1, CHN2, CNTN6, CTNNA2, FTO, GHR, GRM5, GRM7, IRX3, PARK2, PTPRD, RTN4, SEMA3E, SEPP1, SERPINI1, UNC13C</i>	3.56×10^{-4}	4.58×10^{-2}

Abbreviations: ADHD, attention-deficit/hyperactivity disorder; CNVs, copy number variations.

^aSingle test *P*-values.

^bMultiple test-corrected *P*-values using the Benjamini–Hochberg correction; only categories reaching a corrected statistical significance of *P* < 0.05 are shown.

Table 5 Gene functional categories significantly enriched in ADHD CNV deletions using Gene Ontology (GO) analysis

GO term	Genes in CNVs	Significance ^a	Adjusted significance ^b
Learning	<i>CTNND2, GRM5, GRM7, PARK2</i>	9.20×10^{-5}	9.48×10^{-3}
Response to organic substance	<i>ACACA, COLEC12, DUOX1, DUOX2, HNF1B</i>	4.91×10^{-4}	1.76×10^{-2}
Lipoprotein metabolic process	<i>APOL3, APOL4, COLEC12, PIGW</i>	7.16×10^{-4}	1.76×10^{-2}
Learning and/or memory	<i>CTNND2, GRM5, GRM7, PARK2</i>	8.24×10^{-4}	1.76×10^{-2}
Hindbrain development	<i>HNF1B, KLHL1, LHX1</i>	8.56×10^{-4}	1.76×10^{-2}
Cell adhesion	<i>AATF, CDH12, CDH4, CNTN6, CNTNAP2, CSMD1, CTNNA2, CTNNA3, CTNND2, GMDS, PCDH21, SDK1</i>	1.31×10^{-3}	2.25×10^{-2}

Abbreviations: ADHD, attention-deficit/hyperactivity disorder; CNVs, copy number variations.

^aSingle test *P*-values.

^bMultiple test-corrected *P*-values using the Benjamini–Hochberg correction; only categories reaching a corrected statistical significance of *P* < 0.05 are shown.

ataxin-2 gene responsible for spinocerebellar ataxia-2, was found overlapping with three rare inherited copy number changes in our ADHD probands, and it was also seen in rare *de novo* copy number changes involving only this gene in a schizophrenic and an autistic proband. Translocations and CNVs disrupting *A2BP1* have been reported in patients with autism, schizophrenia, epilepsy and mental retardation. The *PARK2*, *NKAIN2* and *DPP6* genes were found overlapping with separate rare inherited copy number changes in our study as well as in CNVs overlapping

only the same respective genes in a schizophrenia study. Genomic deletions of the neurexin superfamily gene, *CNTNAP2*, were also identified in three individuals with schizophrenia and epilepsy. Allelic variants of the *CNTNAP2* gene have been found to be associated with autism in three recent studies. Chromosomal rearrangements of both the *CNTNAP2* and *IMMP2L* genes have been reported in patients with Tourette syndrome, and the *IMMP2L* gene is present within the 7q22 *AUTS1* locus identified by several autism association studies. Similarly,

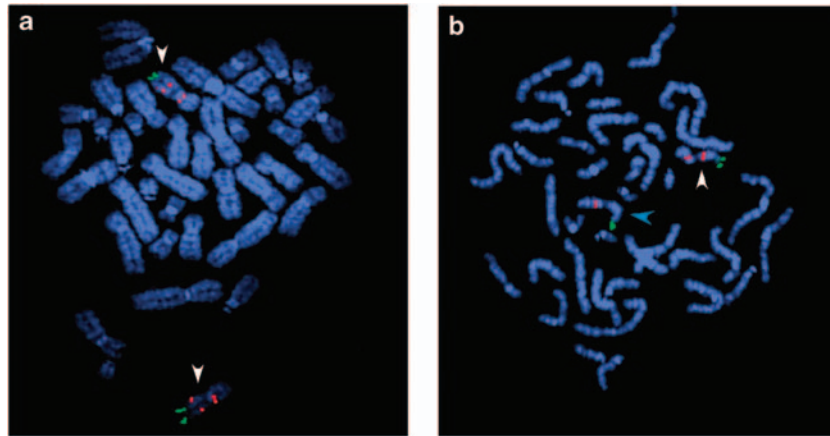


Figure 1 FISH validation of the *GRM5* CNV. Metaphase spreads from (a) the non-affected father and (b) an ADHD patient with the deletion hybridized with probes labeled with Spectrum red (red signal) or Spectrum green (green signal). FISH was performed using fosmid W12-2219g4 (red signal) specific for the *GRM5* deletion and BAC RP11-697e14, a control probe for the subtelomeric region of chromosome 11q (green signal). A portion of the *GRM5* gene, including the 82 kb region deleted in this family, is part of a 325 kb segmental duplication present in two copies on chromosome 11, one in 11q and the other in 11p. This results in the observation of two red signals for the *GRM5* probe in the non-deleted father (a), on both homologs of chromosome 11 indicated by white arrowheads. The annotated *GRM5* gene in the reference genome is present on 11q. In the deleted patient (b), the red signal on 11q is missing on one of the two chromosome 11 homologs, because of the deletion within the *GRM5* gene, (indicated by a blue arrowhead).

chromosomal rearrangements disrupting the *AUTS2* gene have been reported in five autism patients. Finally, a rare copy number variant in a schizophrenic patient was found to overlap with the glutamatergic receptor *GRM7*. We observed an ADHD proband with a CNV in *GRM7* who also presented with anxiety. The extinction of conditioned fear, blocked with down-regulation of *GRM7*, suggests that some of these CNVs may potentially explain certain comorbidities frequently associated with ADHD.^{50,51}

Recent investigations of structural variation in autism and schizophrenia have found increased *de novo* and/or overall variation in diseased individuals, leading to the speculation that these diseases may have a sizable number of possible molecular etiologies.^{15,19,21,52,53} To date, this theory is consistent with the general lack of success of genetic association studies in identifying common causative variants in neuropsychiatric disorders, including ADHD.⁵⁴ Our results further support this hypothesis, as we found a wide distribution of genes specifically affected by CNVs in our ADHD probands relative to controls, many of which were associated with neurodevelopmental pathways and disorders.

Although our CNV detection platform is of high resolution, common CNV regions are underrepresented; it remains to be determined whether use of a higher resolution platform or a sequencing approach would alter the distribution curve of implicated genes. Nevertheless, our approach has identified a number of intriguing candidates that support a potential role of CNVs in ADHD, and it also suggests a number of candidate genes that may help to explain the spectrum of phenotypic heterogeneity observed in ADHD and other neuropsychiatric disorders.

Conflict of interest

The authors declare no conflict of interest.

Acknowledgments

The Children's Hospital of Philadelphia Institutional Review Board has approved this study. This work was supported in part by National Institutes of Health Grants K23MH066275 (JE), GM081519 (THS), and P30HD026979 (MD and XG); University of Pennsylvania Grant UL1-RR-024134 (JE); Pennsylvania Department of Health Grant SAP 4100037707 (PSW); and a Developmental Research Award from the Cotswold Foundation (SG and HH). All genome-wide genotyping was funded by an Institutional Development Award from the Children's Hospital of Philadelphia (HH). We thank all the participating individuals and families for making this study possible.

References

- Polanczyk G, de Lima MS, Horta BL, Biederman J, Rohde LA. The worldwide prevalence of ADHD: a systematic review and meta-regression analysis. *Am J Psychiatry* 2007; **164**: 942–948.
- Barkley RA, Fischer M, Smallish L, Fletcher K. Young adult outcome of hyperactive children: adaptive functioning in major life activities. *J Am Acad Child Adolesc Psychiatry* 2006; **45**: 192–202.
- Kessler RC, Adler L, Ames M, Barkley RA, Birnbaum H, Greenberg P *et al*. The prevalence and effects of adult attention deficit/hyperactivity disorder on work performance in a nationally representative sample of workers. *J Occup Environ Med* 2005; **47**: 565–572.
- Seidman LJ. Neuropsychological functioning in people with ADHD across the lifespan. *Clin Psychol Rev* 2006; **26**: 466–485.

- 5 Bidwell LC, Willcutt EG, Defries JC, Pennington BF. Testing for neuropsychological endophenotypes in siblings discordant for attention-deficit/hyperactivity disorder. *Biol Psychiatry* 2007; **62**: 991–998.
- 6 Mackie S, Shaw P, Lenroot R, Pierson R, Greenstein DK, Nugent III TF *et al*. Cerebellar development and clinical outcome in attention deficit hyperactivity disorder. *Am J Psychiatry* 2007; **164**: 647–655.
- 7 Volkow ND, Wang GJ, Newcorn J, Fowler JS, Telang F, Solanto MV *et al*. Brain dopamine transporter levels in treatment and drug naive adults with ADHD. *Neuroimage* 2007; **34**: 1182–1190.
- 8 Solanto MV. Neuropsychopharmacological mechanisms of stimulant drug action in attention-deficit hyperactivity disorder: a review and integration. *Behav Brain Res* 1998; **94**: 127–152.
- 9 Gainetdinov RR, Caron MG. Genetics of childhood disorders: XXIV. ADHD, part 8: hyperdopaminergic mice as an animal model of ADHD. *J Am Acad Child Adolesc Psychiatry* 2001; **40**: 380–382.
- 10 Mick E, Faraone SV. Genetics of attention deficit hyperactivity disorder. *Child Adolesc Psychiatr Clin NAm* 2008; **17**: 261–284, vii–viii.
- 11 Neale BM, Faraone SV. Perspective on the genetics of Attention Deficit/Hyperactivity Disorder. *Am J Med Genet B Neuropsychiatr Genet* 2008; **147B**: 1334–1336.
- 12 Erenberg G. The relationship between Tourette syndrome, attention deficit hyperactivity disorder, and stimulant medication: a critical review. *Semin Pediatr Neurol* 2005; **12**: 217–221.
- 13 Keshavan M, Montrose DM, Rajarethinam R, Diwadkar V, Prasad K, Sweeney JA. Psychopathology among offspring of parents with schizophrenia: relationship to premorbid impairments. *Schizophr Res* 2008; **103**: 114–120.
- 14 Marshall CR, Noor A, Vincent JB, Lionel AC, Feuk L, Skaug J *et al*. Structural variation of chromosomes in autism spectrum disorder. *Am J Hum Genet* 2008; **82**: 477–488.
- 15 Sebat J, Lakshmi B, Malhotra D, Troge J, Lese-Martin C, Walsh T *et al*. Strong association of *de novo* copy number mutations with autism. *Science* 2007; **316**: 445–449.
- 16 Szatmari P, Paterson AD, Zwaigenbaum L, Roberts W, Brian J, Liu XQ *et al*. Mapping autism risk loci using genetic linkage and chromosomal rearrangements. *Nat Genet* 2007; **39**: 319–328.
- 17 Friedman JI, Vrijenhoek T, Markx S, Janssen IM, van der Vliet WA, Faas BH *et al*. CNTNAP2 gene dosage variation is associated with schizophrenia and epilepsy. *Mol Psychiatry* 2008; **13**: 261–266.
- 18 Kirov G, Gumus D, Chen W, Norton N, Georgieva L, Sari M *et al*. Comparative genome hybridization suggests a role for NRXN1 and APBA2 in schizophrenia. *Hum Mol Genet* 2008; **17**: 458–465.
- 19 Walsh T, McClellan JM, McCarthy SE, Addington AM, Pierce SB, Cooper GM *et al*. Rare structural variants disrupt multiple genes in neurodevelopmental pathways in schizophrenia. *Science* 2008; **320**: 539–543.
- 20 Wilson GM, Flibotte S, Chopra V, Melnyk BL, Honer WG, Holt RA. DNA copy-number analysis in bipolar disorder and schizophrenia reveals aberrations in genes involved in glutamate signaling. *Hum Mol Genet* 2006; **15**: 743–749.
- 21 Xu B, Roos JL, Levy S, van Rensburg EJ, Gogos JA, Karayiorgou M. Strong association of *de novo* copy number mutations with sporadic schizophrenia. *Nat Genet* 2008; **40**: 880–885.
- 22 Yang N, Li H, Criswell LA, Gregersen PK, Alarcon-Riquelme ME, Kittles R *et al*. Examination of ancestry and ethnic affiliation using highly informative diallelic DNA markers: application to diverse and admixed populations and implications for clinical epidemiology and forensic medicine. *Hum Genet* 2005; **118**: 382–392.
- 23 Ambrosini PJ. Historical development and present status of the schedule for affective disorders and schizophrenia for school-age children (K-SADS). *J Am Acad Child Adolesc Psychiatry* 2000; **39**: 49–58.
- 24 Kessler RC, Adler L, Ames M, Demler O, Faraone S, Hiripi E *et al*. The World Health Organization Adult ADHD Self-Report Scale (ASRS): a short screening scale for use in the general population. *Psychol Med* 2005; **35**: 245–256.
- 25 Kessler RC, Adler LA, Gruber MJ, Sarawate CA, Spencer T, Van Brunt DL. Validity of the World Health Organization Adult ADHD Self-Report Scale (ASRS) Screener in a representative sample of health plan members. *Int J Methods Psychiatr Res* 2007; **16**: 52–65.
- 26 Ahn SJ, Costa J, Emanuel JR. PicoGreen quantitation of DNA: effective evaluation of samples pre- or post-PCR. *Nucleic Acids Res* 1996; **24**: 2623–2625.
- 27 Hakonarson H, Grant SF, Bradfield JP, Marchand L, Kim CE, Glessner JT *et al*. A genome-wide association study identifies KIAA0350 as a type 1 diabetes gene. *Nature* 2007; **448**: 591–594.
- 28 Shaikh TH, Kurahashi H, Saitta SC, O'Hare AM, Hu P, Roe BA *et al*. Chromosome 22-specific low copy repeats and the 22q11.2 deletion syndrome: genomic organization and deletion endpoint analysis. *Hum Mol Genet* 2000; **9**: 489–501.
- 29 Venkatraman ES, Olshen AB. A faster circular binary segmentation algorithm for the analysis of array CGH data. *Bioinformatics* 2007; **23**: 657–663.
- 30 Hasin Y, Olender T, Khen M, Gonzaga-Jauregui C, Kim PM, Urban AE *et al*. High-resolution copy-number variation map reflects human olfactory receptor diversity and evolution. *PLoS Genet* 2008; **4**: e1000249.
- 31 Nozawa M, Kawahara Y, Nei M. Genomic drift and copy number variation of sensory receptor genes in humans. *Proc Natl Acad Sci USA* 2007; **104**: 20421–20426.
- 32 Young JM, Endicott RM, Parghi SS, Walker M, Kidd JM, Trask BJ. Extensive copy-number variation of the human olfactory receptor gene family. *Am J Hum Genet* 2008; **83**: 228–242.
- 33 Cortese S, Konofal E, Lecendreau M, Arnulf I, Mouren MC, Darra F *et al*. Restless legs syndrome and attention-deficit/hyperactivity disorder: a review of the literature. *Sleep* 2005; **28**: 1007–1013.
- 34 Walters JR, Ruskin DN, Allers KA, Bergstrom DA. Pre- and postsynaptic aspects of dopamine-mediated transmission. *Trends Neurosci* 2000; **23**(10 Suppl): S41–S47.
- 35 Schormair B, Kemlink D, Roeske D, Eckstein G, Xiong L, Lichtner P *et al*. PTPRD (protein tyrosine phosphatase receptor type delta) is associated with restless legs syndrome. *Nat Genet* 2008; **40**: 946–948.
- 36 Shyr SD, Wang JY, Lin CG, Hsiao YH, Liou YH, Wu YJ *et al*. The polymorphisms of protein-tyrosine phosphatase receptor-type delta gene and its association with pediatric asthma in the Taiwanese population. *Eur J Hum Genet* 2008; **16**: 1283–1288.
- 37 Blackman JA, Gurka MJ. Developmental and behavioral comorbidities of asthma in children. *J Dev Behav Pediatr* 2007; **28**: 92–99.
- 38 Pearson VE, Gamaldo CE, Allen RP, Lesage S, Hening WA, Earley CJ. Medication use in patients with restless legs syndrome compared with a control population. *Eur J Neurol* 2008; **15**: 16–21.
- 39 Plessen KJ, Bansal R, Zhu H, Whiteman R, Amat J, Quackenbush GA *et al*. Hippocampus and amygdala morphology in attention-deficit/hyperactivity disorder. *Arch Gen Psychiatry* 2006; **63**: 795–807.
- 40 Mizuno K, Hasegawa K, Katagiri T, Ogimoto M, Ichikawa T, Yakura H. MPTP delta, a putative murine homolog of HPTP delta, is expressed in specialized regions of the brain and in the B-cell lineage. *Mol Cell Biol* 1993; **13**: 5513–5523.
- 41 Uetani N, Chagnon MJ, Kennedy TE, Iwakura Y, Tremblay ML. Mammalian motoneuron axon targeting requires receptor protein tyrosine phosphatases sigma and delta. *J Neurosci* 2006; **26**: 5872–5880.
- 42 Uetani N, Kato K, Ogura H, Mizuno K, Kawano K, Mikoshiba K *et al*. Impaired learning with enhanced hippocampal long-term potentiation in PTPdelta-deficient mice. *EMBO J* 2000; **19**: 2775–2785.
- 43 Dorval KM, Wigg KG, Crosbie J, Tannock R, Kennedy JL, Ickowicz A *et al*. Association of the glutamate receptor subunit gene GRIN2B with attention-deficit/hyperactivity disorder. *Genes Brain Behav* 2007; **6**: 444–452.
- 44 Howells FM, Russell VA. Glutamate-stimulated release of norepinephrine in hippocampal slices of animal models of attention-deficit/hyperactivity disorder (spontaneously hypertensive rat) and depression/anxiety-like behaviours (Wistar-Kyoto rat). *Brain Res* 2008; **1200**: 107–115.
- 45 Pattij T, Vanderschuren LJ. The neuropharmacology of impulsive behaviour. *Trends Pharmacol Sci* 2008; **29**: 192–199.

- 46 Kessler RC, Adler LA, Barkley R, Biederman J, Conners CK, Faraone SV *et al*. Patterns and predictors of attention-deficit/hyperactivity disorder persistence into adulthood: results from the national comorbidity survey replication. *Biol Psychiatry* 2005; **57**: 1442–1451.
- 47 Lu YM, Jia Z, Janus C, Henderson JT, Gerlai R, Wojtowicz JM *et al*. Mice lacking metabotropic glutamate receptor 5 show impaired learning and reduced CA1 long-term potentiation (LTP) but normal CA3 LTP. *J Neurosci* 1997; **17**: 5196–5205.
- 48 Wu LJ, Ko SW, Toyoda H, Zhao MG, Xu H, Vadakkan KI *et al*. Increased anxiety-like behavior and enhanced synaptic efficacy in the amygdala of GluR5 knockout mice. *PLoS ONE* 2007; **2**: e167.
- 49 Sullivan K, Hatton D, Hammer J, Sideris J, Hooper S, Ornstein P *et al*. ADHD symptoms in children with FXS. *Am J Med Genet A* 2006; **140**: 2275–2288.
- 50 Fendt M, Schmid S, Thakker DR, Jacobson LH, Yamamoto R, Mitsukawa K *et al*. mGluR7 facilitates extinction of aversive memories and controls amygdala plasticity. *Mol Psychiatry* 2008; **13**: 970–979.
- 51 Masugi M, Yokoi M, Shigemoto R, Muguruma K, Watanabe Y, Sansig G *et al*. Metabotropic glutamate receptor subtype 7 ablation causes deficit in fear response and conditioned taste aversion. *J Neurosci* 1999; **19**: 955–963.
- 52 International Schizophrenia Consortium. Rare chromosomal deletions and duplications increase risk of schizophrenia. *Nature* 2008; **455**: 237–241.
- 53 Stefansson H, Rujescu D, Cichon S, Pietilainen OP, Ingason A, Steinberg S *et al*. Large recurrent microdeletions associated with schizophrenia. *Nature* 2008; **455**: 232–236.
- 54 Elia J, Devoto M. ADHD genetics: 2007 update. *Curr Psychiatry Rep* 2007; **9**: 434–439.



This work is licensed under the Creative Commons Attribution-NonCommercial-No Derivative Works 3.0 License. To view a copy of this license, visit <http://creativecommons.org/licenses/by-nc-nd/3.0/>

Gene-specific references displayed in the text and Table 2 are listed in the Supplementary Materials. Supplementary Information accompanies the paper on the Molecular Psychiatry website (<http://www.nature.com/mp>)