

REVIEW ARTICLE

Open Access

Psychiatric face of COVID-19

Luca Steardo Jr. ¹, Luca Steardo ^{2,3} and Alexei Verkhatsky ^{4,5,6}

Abstract

The Coronavirus Disease 2019 (COVID-19) represents a severe multiorgan pathology which, besides cardio-respiratory manifestations, affects the function of the central nervous system (CNS). The severe acute respiratory syndrome coronavirus 2 (SARS-CoV-2), similarly to other coronaviruses demonstrate neurotropism; the viral infection of the brain stem may complicate the course of the disease through damaging central cardio-respiratory control. The systemic inflammation as well as neuroinflammatory changes are associated with massive increase of the brain pro-inflammatory molecules, neuroglial reactivity, altered neurochemical landscape and pathological remodelling of neuronal networks. These organic changes, emerging in concert with environmental stress caused by experiences of intensive therapy wards, pandemic fears and social restrictions, promote neuropsychiatric pathologies including major depressive disorder, bipolar disorder (BD), various psychoses, obsessive-compulsive disorder and post-traumatic stress disorder. The neuropsychiatric sequelae of COVID-19 represent serious clinical challenge that has to be considered for future complex therapies.

Introduction: infectious pandemics as a risk factor for psychiatric diseases

Human civilisation has always co-existed with parasitic forms of life represented by bacteria and viruses that invariably took the toll of life. When social, biological and economic factors aligned, the infections became widespread reaching the level of pandemic, which caused massive death and misery; pandemics shaken the foundations of society and turned the course of history and mindset of humanity. The typhoid fever devastated Athens in 490 BC thus giving the military society of Sparta upper hand in Peloponnesian war, the Plague of Justinian doomed the reincarnation of Roman empire, while the Black Death, caused by *Yersinia pestis* that killed a third of population of Europe, instigated tectonic changes in economic relations that ultimately disposed of serfdom and feudalism and laid foundations of Renaissance. The last global epidemic of Spanish flu responsible for 20–50 millions deaths has coincided with First World

War, internecine conflicts and birth of bolshevism, which all together brought the greatest confusion to mankind. Movements of great masses of soldiers from the US brought the H1N1 influenza A virus to Europe; disruption of the health services, poor hygiene associated with movements of people, devastations of war and malnutrition all sparked the superinfection with unusually high death toll¹.

All major pandemic, being associated with severe environmental stress, affected human way of thinking and human psychological health. Systematic studies aimed at identifying pathogenetic mechanisms responsible for the onset of psychiatric diseases following viral epidemics begun in 19 century. The eminent English doctor, Henry Holland in 1839 proclaimed that the flu was responsible “of featured impairments of mental functions almost in the same ratio of the body and that the behavioural alterations were not comparable to those secondary to other fevers”¹. Eighty years later Karl Menniger confirmed the association between viral infection and psychiatric morbidity: “one hundred cases of mental disease associated with influenza in the recent pandemic have been

Correspondence: Luca Steardo Jr. (steardo@unicz.it) or Luca Steardo (luca.steardo@uniroma1.it) or Alexei Verkhatsky (Alexej.Verkhatsky@manchester.ac.uk)

¹University Magna Graecia, Catanzaro, Italy

²Sapienza University Rome, Rome, Italy

Full list of author information is available at the end of the article

¹ Holland, H., 1839, *Medical Notes and Reflections*, Haswell, Barrington, and Haswell, Philadelphia, p. 136.

© The Author(s) 2020



Open Access This article is licensed under a Creative Commons Attribution 4.0 International License, which permits use, sharing, adaptation, distribution and reproduction in any medium or format, as long as you give appropriate credit to the original author(s) and the source, provide a link to the Creative Commons license, and indicate if changes were made. The images or other third party material in this article are included in the article's Creative Commons license, unless indicated otherwise in a credit line to the material. If material is not included in the article's Creative Commons license and your intended use is not permitted by statutory regulation or exceeds the permitted use, you will need to obtain permission directly from the copyright holder. To view a copy of this license, visit <http://creativecommons.org/licenses/by/4.0/>.

studied at the Boston Psychopathic Hospital. The variety of mental disturbance manifested is wide... they are readily classifiable into four groups: delirium, dementia praecox, other psychoses, and unclassified. Of these, dementia praecox is the largest group numerically”².

Over the years the accumulated clinical evidence has strengthened our knowledge of psychiatric features of cerebral disease. In the past few decades the interest in the putative aetiologic role of viruses has gradually enhanced to enclose not only the organic mental disorders induced by acute viral encephalitis and the slow viral infections of the central nervous system (CNS) but also to encompass the so-called functional psychiatric diseases such as psychosis, depression and bipolar disorder (BD). It has become universally acknowledged that combination of systemic infection, viral neurotropism and environmental stress facilitates or even induces development of psychiatric pathologies that exacerbate the course of pandemic and present a significant therapeutic challenge.

Neurotropism of coronaviruses

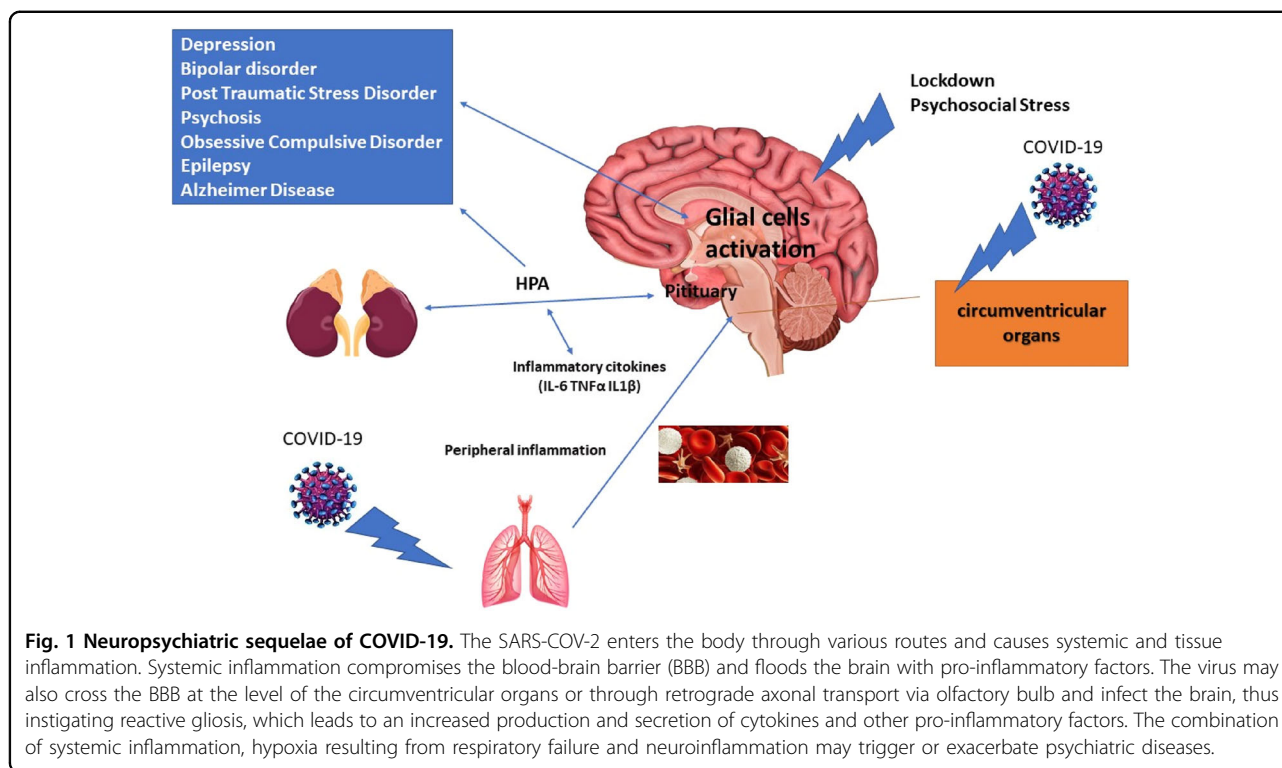
The Coronavirus Disease 2019 (COVID-19) pandemic revives a long-forgotten challenge for humanity that lived in (illusionary) mass infection free environment. Grappling with the uncertainties of a newly emerged disease, against which neither vaccine nor effective treatment protocol exists, the mankind will likely subsist in a new reality for months if not years before implementation of a global remedy. How the virus interacts with our body and which are the pathophysiological scenarios for acute phase of the disease and long-lasting outcomes are the critical questions to be addressed to identify medical strategies.

The COVID-19 results from the infection with a novel coronavirus that was first identified in China following an initial outbreak in 2019². This coronavirus, named as severe acute respiratory syndrome coronavirus 2 (SARS-CoV-2) belongs to group 2B of β -coronavirus family³. The SARS-CoV-2 is recognised as the seventh component of the coronavirus family and has been included in the orthocoronavirinae subfamily⁴. Coronaviruses are single-stranded RNA viruses generally related to respiratory illness; they also (albeit less frequently) may instigate gastrointestinal and neurological disorders in a wide variety of mammals and birds. The coronaviruses have high rates of mutation and recombination as well as a propensity of cross-species transmission⁵. The SARS-CoV-2 enters the cell following binding to plasmalemmal ACE2 enzyme with subsequent endocytic internalisation^{6,7}. The primary targets for the virus are represented by epithelial cells of the lungs and gastrointestinal tract. Endocytosis of the

ACE2-virus complex also leads to a depletion of plasmalemmal pool of ACE2 with consequent reduction in conversion of Angiotensin II to Angiotensin 1–7; the latter peptide possesses marked anti-inflammatory properties^{8,9} and the reduction of Arg 1–7 significantly contributes to lung failure and the massive occurrence of pulmonary fibrosis described in patients with COVID-19¹⁰. Whether SARS-CoV-2 could penetrate cells through alternative routes remains unclear, although in contrast to other coronaviruses, SARS-CoV-2 does not bind to plasmalemmal receptors such as aminopeptidase N and dipeptidyl peptidase¹¹.

The clinical presentation of COVID-19 is dominated by respiratory signs with less frequent occurrence of gastrointestinal symptoms. The virus invasion is not limited to these two organs, particularly considering that significant expression of ACE2 is detected in other tissues, including heart, kidney, endothelium and CNS¹². Viral infection of the brain¹³ may have multiple neurological and psychiatric consequences, contributing to both the acute phase of disease and its potential sequelae Fig.1. The neurotropism has been well documented for several β -coronaviruses including SARS-CoV-1, MERS-CoV and the HEV 67 N virus of porcine hemagglutinating encephalomyelitis^{14–19}. Arguably, the primary way for SARS-CoV-2 is associated with ACE2 expressed in neurones and in neuroglia^{20–22}. The ACE2 expressing neural cells are found in the circumventricular organs, such as the subfornical organ, the paraventricular nucleus, the solitary tract and in the rostral ventrolateral medulla²¹. All these regions have little protection of the blood brain barrier (BBB) and all are involved in cardiovascular and respiratory regulation. The lack of BBB makes these CNS sites vulnerable in many pathologies, such as various types of systemic inflammation including sepsis-associated encephalopathy, neuroinfection with bacteria, viruses or parasites, stress and autoimmune encephalitis^{23,24}. Microglial cells localised in CVO seems to be in a state of chronic activation in the attempt to limit the entry of circulating neurotoxic molecules or invasive agents into the parenchyma and to preserve cerebral homeostasis²⁵. The SARS-CoV-2, similarly to other respiratory viruses, could gain access to CNS through several routes, for example by migrating through axons of the olfactory nerve²⁶. The intranasal infection of SARS-CoV-1 or MERS-CoV²⁷ was shown to result in rapid spread of viral particles into the brain possibly through the olfactory bulb by a retrograde axonal transport; viruses replicating in the nasal cavity may utilise the direct link with the olfactory bulb to colonise the CNS. In this paradigm the virus is transported through the axons of olfactory bulb neurones with subsequent infection of the specific type of neuroglia the sustentacular cells of the olfactory bulb²⁸. When the virus was administered intranasally in extremely low

^[2] Ravenholt, R. T., and Foege, W. H., 1982, 1918 influenza, encephalitis lethargica, parkinsonism, *Lancet*, v. 2, p. 863.



doses, only the CNS was disseminated⁵, strengthening the concept of an intrinsic neurotropism of coronaviruses. In rodents ablation of the olfactory bulb prevented viral spread following nasal infection²⁹. Further support for the role of nasal-olfactory route comes from clinical observations according to which anosmia develops early in SARS-CoV-2 infected subjects³⁰. The SARS-CoV-2 RNA was present for 20 or more days in oropharyngeal and nasopharyngeal secretion samples of 30% of COVID-19 survivors, suggesting that SARS-CoV-2 can linger for a long time at both upper and lower respiratory tract³¹.

The virus can also enter the brain through infecting endothelial cells lining brain vasculature; an electron-microscopic analysis of the frontal lobe identified SARS-CoV-2 viral particles in the endothelium with some indications for virus transit to the neuropil³². The SARS-CoV-2 can enter the CNS using perivascular spaces of the glymphatic system³³. Furthermore, viruses can invade the brain through other nerves, such as the trigeminal nerve, which projects nociceptive terminals to nasal cavities³⁴. Similarly, sensory fibres of the vagus nerve, that innervate the respiratory tract, can present another invasion route³⁵. Further evidence of the SARS-CoV-2 neuroinfection, oedema and neuronal degeneration were reported in post-mortem brain samples, while in a case of encephalitis genome sequencing confirmed viral presence in the cerebrospinal fluid³⁶. Post-mortem analysis of nervous tissue from tissue of a 54 years-old man who died from severe

respiratory failure associated with COVID-19 identified SARS-CoV-2 viral particles in the olfactory nerve, in the gyrus rectus and in the brainstem with signs of profound damage to all elements of the tissue including glial cells, neurones, their axons and myelin³⁷.

It seems therefore that SARS-CoV-2, similarly to SARS-CoV-1 and MERS-CoV infects the brainstem, in which the respiratory neuronal circuits are located, and, by analogy, a similar infection could occur and contribute to the respiratory failure, observed in SARS-CoV-2 pneumonia. Breathing depends on a central pattern generator located in the dorsolateral pons, in the nucleus of the solitary tract, and in ventrolateral medulla; this pattern generator is responsible for respiratory rhythms and control of motor neurones innervating respiratory muscles^{38,39}. In a sub-population of COVID-19 patients' respiratory failure is manifested by a decreased breathing rate with hypoxia and hypercapnia. Many of these patients remain in a coma for days, despite the suspension of sedative treatment and the absence of apparent metabolic alteration, indicating viral encephalitis, which often is resolved without major sequelae⁴⁰. This is not always the case, however, and when the extent of respiratory failure is overwhelming, patients die before the virus-induced brain damage can become evident⁴¹. Given the viral load in the brain stem, the subsequent reduction of ACE2 expression associated with the neuronal death, could lead to an alteration in baroreceptors function associated with

an increase in the sympathetic tone and a severe, life threatening rise in blood pressure^{42,43}. The encephalitis, reported as a complication of coronavirus infection, invariably affects not only the brain stem but also thalamus and white matter^{26,44,45}. These aspects have to be taken in account by clinicians dealing with COVID-19 patients displaying severe cardiovascular and respiratory failure. Recognizing that respiratory symptoms may, at least in part, originate from the encephalitic damage to the brain stem, may help to design more effective treatments.

The damage to the brain stem as well as to other brain structures can also result from systemic inflammation, often referred to as systemic inflammatory response syndrome or “cytokine storm”^{46,47}. At the same time the brain is a target for infectious toxic encephalopathy, associated with systemic toxemia or hypoxia that accompany acute infectious diseases. Toxic encephalopathies have massive neurological and psychiatric presentations and even cerebral oedema, which however develops without accumulation of inflammatory markers in cerebrospinal fluid⁴⁸. In addition, systemic infection and high levels of circulating cytokines often damage microcirculation, inducing oedema and thrombosis; the thromboembolism being reported in up to 30% of patients⁴⁹. The cytokines, furthermore, activate autonomic nerves and hypothalamic-pituitary-adrenal axis which affect blood pressure. All these factors together stipulate ischaemic damage to the brain and are associated with occurrence of strokes which further increase mortality in COVID-19 patients⁵⁰.

Neuroinflammation in COVID-19

Despite the existence of BBB, the brain and the spinal cord communicate with the peripheral immune system, and hence every systemic inflammation affects the CNS⁵¹. In the context of COVID-19 the damage to BBB mediated by a massive increase in circulating pro-inflammatory factors is highly likely⁵². Compromised BBB allows an inflammatory storm to engulf CNS leading to functional damage. Once in the brain, peripheral inflammatory molecules as well as inflammatory cells instigate neuroinflammation thus perturbing homeostasis, altering neural networks and inducing neuronal death^{53,54}.

In the initial phases of systemic inflammation, antiviral immunity can effectively blunt viral dissemination, since reactivity of neuroglia and influx of surveying T cells can remove infectious elements, preventing spread without any further tissue damage⁵⁵. In severe COVID-19, substantial release of chemokines and interleukins associated with systemic inflammation and the marked lymphopenia allow higher and a more prolonged persistence of a viral load; consequently deficient clearance of the virus together with the reactive gliosis can perpetuate neuroinflammation^{56–58}. Even in mild cases, SARS-CoV-2

pneumonia causes hypoxia, which on its own can trigger or exacerbate inflammatory response of the CNS. Cerebral hypoxia activates key inflammatory transcription factors, including NF- κ B and hypoxia inducible factor which stimulate overproduction of pro-inflammatory messengers⁵⁹, trigger glial reactivity^{60,61}, induce mitochondrial oxidative damage, and activate promoter region of numerous miRNAs, crucial for regulating gene expression during inflammation⁶². An excessive glial reactivity due to persistent exposure to pro-inflammatory cytokines also contributes to synapse loss and neuronal death^{63,64}.

The impact of SARS-COV-2 infection on the brain is associated with excessive physical and psychological stress that stimulates the hypothalamic-pituitary-adrenal axis thus further exacerbating neuroinflammatory status⁶⁵. The duration and frequency of exposure to stressors impacts neuroinflammation. In this sense while a response to short and moderate stressors could be beneficial, repeated or extended exposure to strong stressors exacerbates inflammation⁶⁶. Exposure to long-lasting stress enhances inflammatory response through the release of several pro-inflammatory factors, which trigger down-stream signalling pathways, including NF- κ B-dependent transcription. Contribution of glucocorticoids, associated with stress response, to sustaining and promoting neuroinflammation is complex, going beyond effects deriving from the activation of the signals down-stream of their receptors⁶⁷. Microarray experiments demonstrated that glucocorticoids drive expression of specific gene profiles, whereas concurrent co-activation of glucocorticoid receptors and NF- κ B-dependent transcription induces a peculiar pattern of gene expression different from the one resulting from separate activation of each signalling pathway⁶⁸. Neuroinflammation is a significant aetiological factor for a large number of neuropsychiatric and neuro-cognitive diseases, including neurodegenerative disorders^{69–71}, depression⁷², psychosis⁷³, autism⁷⁴, drug abuse⁷⁵, sleep disorders⁷⁶ and epilepsy⁷⁷. The neuropsychiatric burden of this pandemic is currently unknown, but is likely to be considerable. Based on the results from investigations of recent epidemics by corona respiratory viruses, SARS-COV-1 and MERS-COV, it is possible to assume that a significant percentage of subjects recovering from pneumonia do not fully regain their previous emotional state and cognitive abilities. Indeed, a study of neuropsychiatric consequences of SARS-COV-1 performed at 30–50 months after the infection demonstrated an occurrence of 40% of post-traumatic stress disorder (PTSD), 36.4% of depression, 15.6% of obsessive compulsive disorder, and an equal incidence for anxiety disorders⁷⁸. Furthermore, a meta-analysis among SARS-COV-1 patients of mixed conditions showed neurocognitive deficits up to 18 months post-discharge⁷⁹, including mild cognitive impairment⁸⁰.

Given this evidence the burden of long-term post-SARS-CoV-2 delirium and dementia may be notable, especially for elderly subjects who are more vulnerable to post-infectious neurocognitive sequelae. The average age of the subjects with severe COVID-19 is around 63 years, whereas patients under the age of fifty represent only 26% of all clinical cases. The ageing itself is the major risk factor for cognitive pathologies and neurodegeneration; severe systemic diseases as well as stress are known to provoke or accelerate cognitive decline in elderly. In the aged brain the neurogenesis is dwindling, synaptic plasticity deteriorates, metabolism is reduced and overall brain vulnerability to exogenous insults is increased. Ageing of the human brain is also associated with degeneration and atrophy of microglia and astrocytes which diminishes homeostatic and neuroprotective support and again increases brain susceptibility to pathology^{81–84}. Infection with SARS-CoV-2 (even in moderate clinical cases) thus promotes cognitive disorders with emergence of delirium, acute psychosis, exacerbation of mild cognitive impairment or with accelerating of dementia associated with various neurodegenerative conditions, including Alzheimer's disease (AD)^{85,86}. Conceptually, neuroinflammation contributes to the pathological development of neurodegeneration and often is considered as a common, even unifying feature of neurodegeneration⁸⁷, while brain infection and ischaemic insults by themselves can trigger neurodegenerative process and instigate dementia⁸⁸.

It is a truth universally acknowledged that systemic inflammatory challenge accelerates cognitive impairment, which implicates that the infection itself, as well as aberrations of the innate immune system, is responsible for the cognitive deficits⁸⁹. Epidemiological observations as well as neuropathological analysis support the notion of a direct correlation between systemic infections, neuroinflammation and cognitive disorders, such as delirium and AD^{90,91}. In this context, cohort studies identified pneumonia as the pre-eminent pathology responsible for hastening and boosting cognitive decline⁹². At the same time vaccinations against bacteria or viruses reduce the risk of the progressive evolution of dementia⁹³. Close correlation between pneumonia and delirium in the elderly is a long-standing observation, and delirium, which represents the most common event of acute brain dysfunction, is a frequent complication of COVID-19 clinical progression, perhaps due to the neurovirulence, severe peripheral inflammation, profound stress; even "social distancing" and loneliness which elderly experience during pandemic contribute to psychotic episodes⁹⁴.

COVID-19 and major depression

Systemic and tissue immune response contribute to the pathophysiology of numerous neuropsychiatric diseases

through modifying neurochemical environment, synaptic transmission and plasticity, synthesis and secretion of neurotrophic factors, neurogenesis, and brain connectome. In this context, the major depression disorder (MDD) is one of the most frequent neuropsychiatric disorders linked to inflammatory injury to the brain. A large body of evidence has associated depression symptoms to pro-inflammatory factors⁹⁵ and neuroglial failure⁹⁶. This link specifically applies to subtypes of depression occurring in the elderly. Ageing substantially affects the levels and the activity of pro-inflammatory cytokines in the CNS. Systemic infection can itself trigger major depression in elderly patients, because of age-dependent decrease of immune homeostasis⁹⁷. In particular increased serum levels of interleukin-1 β directly correlate with emergence of late life MDD⁹⁸. Similarly, a correlation has been observed between inflammatory factors and some specific symptoms, for example, high levels of TNF- α and IL-2 associate with apathy and motor inhibition, whereas IL-6 associates with anhedonia and suicidality⁹⁹. The levels of cytokines decrease when patients recover normal mood levels; conversely cytokines remain elevated in patients resistant to treatment^{100,101}.

Severe cases of COVID-19 are almost invariably accompanied with excessive host immune response, mainly characterised by a massive increase in plasma levels of IL-6, which directly correlates with an unfavourable outcome of the disease¹⁰². At the same time abnormally high concentrations of IL-6 were detected in the cerebral spinal fluid of suicide attempters¹⁰³, of subjects suffering from either depression or schizophrenia¹⁰⁴, of old depressed patients^{105,106} and of mothers with postpartum depression¹⁰⁷. A large body of evidence demonstrated that changes in IL-6 levels, both in plasma and in the brain, are implicated in the emergence of depression, although other factors, environmental or genetic in nature, provide an important contribution¹⁰⁸. In the CNS IL-6 acts as a pro-inflammatory mediator, which promotes synthesis and secretion of additional inflammatory factors and acute phase proteins by astrocytes and microglia¹⁰⁹. Thus IL-6, together with TNF- α and IL-1 β , can be considered as one of the primary regulators of the immune response in the brain, while astrocytes and microglia are the major responders to IL-6, as well as prominent producers of IL-6 stimulated by damage and pathogen-associated molecular patterns (including viruses and their components), neurotransmitters and pro-inflammatory messengers^{63,110–113}. Physiological plasma levels of IL-6 in adults range between 1–10 pg/ml whereas in a systemic inflammation is raised to several ng/ml;¹¹⁴ and even higher concentrations were reported for COVID 19¹¹⁵. Incidentally, high levels of IL-6 have been detected in the plasma, in the cerebrospinal fluid (CSF) and in the post-mortem prefrontal cortex of subjects with suicidal

ideation, with non-fatal suicide attempts or committed suicides¹¹⁶. At the same time no direct correlation was found between plasma and CSF concentrations of IL-6 in subjects with suicide attempts, nor such correlation was detected for scores of depression severity¹¹⁷. The IL-6 levels in circulation also correlated with suicide endophenotypic behaviours, such as personality trait disorders, aggressivity and impulsivity¹¹⁸. This is in agreement with numerous findings proving the role of cytokines in regulating emotions and behaviours through interacting with specific brain areas and different neuronal pathways¹¹⁹. COVID-19 pandemic resulted in significant changes in lifestyle and interpersonal relationships condemning many to prolonged loneliness. These conditions of psychosocial stress can also have a detrimental effect on the most fragile subjects affecting their ability to modulate emotions¹²⁰. Decreased control over impulsivity and feelings of fear in combination with inflammatory challenges to the brain might increase the risk of suicide.

COVID-19 and bipolar disorder

Abnormal balance between the pro-inflammatory (IL-6 and TNF- α) and anti-inflammatory cytokines in the CNS and in the plasma have been repeatedly observed in patients with BD supporting the notion that neuroimmune response may be a prominent factor contributing to aetiopathogenesis of this illness^{121,122}. In acute phases of BD either during manic or depressive episode, an activation of inflammatory cascades were reported, which was considered by many, but not by all, a characteristic feature of the acute illness, rather than a persistent trait of the disease¹²³. Several cytokines, such as IL-1 β , TNF- α , IL-6, interferon- γ were found to increase in circulation in acute phases of BD, with a parallel reduction in the anti-inflammatory factors IL-10 and transforming growth factor β -1, especially in the manic phase^{123,124}.

Analysis of the presence of pro-inflammatory molecules in the CSF in BD patients revealed contradictory results. Somewhat high CSF levels of IL-8, monocyte chemoattractant protein 1 (MCP-1 / CCL-2), and neurofilament light chain were detected in BD subjects, although these biomarkers did not correlate with the outcome of the disease¹²⁵. A meta-analysis of CSF cytokines content in BD subjects revealed increased levels of IL-1 β , the IL-8 showed statistically insignificant rise and no changes for IL-6 were detected¹²⁶. The disparity between the levels of interleukins and chemokines in blood serum and in the CSF is another controversial issue. It is of course tempting to assume that this discrepancy is lost in COVID-19 since the overload of interleukins and chemokines, compromised BBB and activation of CNS resident and invading immune cells exacerbates the neuroinflammation and promotes a bidirectional flow of inflammatory messengers through a permeable barrier. Such a scenario, however,

remains highly hypothetical and much more investigations and analysis are needed to reveal possible association of viral infection in general and COVID-19 in particular with BD.

COVID-19 and reactive psychosis

A wide spectrum of immune system dysregulations as well as infections (together of course with genetic vulnerability, abnormalities in neurotransmission, stress and exposure to environmental factors such as childhood maltreatment) are recognised as potential pathogenetic factors of reactive psychosis¹²⁷. Enhanced inflammation in psychosis has been confirmed by meta-analyses showing increased concentrations of cytokines and their receptors in chronic schizophrenia, as well as in drug-naïve patients in their first episode of psychosis (FEP)¹²⁸. A recent study aimed at investigating pro-inflammatory cytokine profile in FEP patients showed an up-regulation of IL-6, TNF- α and IL-1 β , which was not found in healthy siblings, suggesting familiar vulnerability is not involved in generating the inflammatory-related psychotic reactions¹²⁹.

In an attempt to conceptualise the risk of the emergence of psychosis in subjects infected with SARS-COV-2, it should be emphasised that high levels of IL-6, correlate with reduced hippocampal size in schizophrenic subjects accounting, at least partially, for their cognitive deficits¹³⁰. Moreover, elevated levels of IL-6 were detected in CSF of schizophrenic subjects¹⁰⁴. Even more intriguing is the observation that high levels of IL-6 in adolescents correlate positively with the occurrence of psychosis later in life¹³¹.

COVID-19 and obsessive-compulsive disorder

A growing body of literature reported the occurrence of obsessions and compulsions in patients who had recently recovered from viral encephalitis¹³². Already in 1930s more than a third of cases of obsessive and compulsive disorders (OCD) were recognised as organic in pathogenesis, and linked with Von Economo's encephalitis¹³³. Subsequently, neuropsychiatric literature was dotted with numerous case reports ranging from those of obsessive syndromes with post-encephalitic parkinsonism¹³⁴, to those of post-encephalitic subjects in which diabetes insipidus coexisted with OCD¹³⁵, to the six OCD patients with anamnesis of viral encephalitis¹³⁶. Beside these early examples, more recently, high levels of Borna virus immune complexes and viral components (proteins, RNA) were detected in the blood and in peripheral mononuclear cells of OCD patients, reinforcing the notion of a significant link between viral infection and OCD in predisposed subjects¹³⁷. In this scenario, since functional neuroimaging demonstrated OCD implies alterations in the striato-thalamo-cortical circuits, it was of interest that activity of these circuits may be affected in

viral infection, possibly through interferences with glutamate transmission¹³⁸.

Beyond any doubt immune dysfunction plays a causative role in childhood-onset OCD where the sudden onset of obsessive compulsive signs and tics occurs in the aftermath of a streptococcal infection, with subsequent production of auto-antibodies against neuronal antigens of the basal ganglia¹³⁹, further supporting the notion that an alteration of the immune system may be implicated in the pathobiology of these disorders. Numerous investigations have shown a correlation between circulating pro-inflammatory cytokines levels and OCD^{140,141}. Increase in blood concentrations of IL-1 β , IL-6 and TNF- α in OCD patients was detected when compared to normal controls paired by gender, age, and educational level¹⁴². These findings are in agreement with results of studies investigating drug-naïve, comorbidity-free OCD subjects¹⁴³. The observation that pro-inflammatory cytokines are increased in a study that eliminated any confounding factors, such as anxious or depressive comorbidity or the effects of psychotropic drugs, represents a more convincing support for the idea that immunological abnormalities contribute to the origin of OCD¹⁴¹. Systemic inflammation which is the prominent feature of COVID-19 may therefore trigger OCD in surviving subjects.

COVID-19 and epilepsy

Extensive literature reports epilepsy and behavioural abnormalities as closely linked pathologies¹⁴⁴. Indeed, psychiatric diseases are more frequent in epileptic subjects than in general population irrespective of the time of seizures onset, which could occur either before or after the appearance of psychiatric disorders, suggesting a mutual relationship and potentially shared aetiology¹⁴⁵. This intriguing coexistence of psychiatric features in epileptic patients does not represent a coincidence or an ordinary comorbidity but more likely it reflects interconnected pathobiological processes¹⁴⁶. Neuroinflammation may hint to the underlying mechanism shared by epilepsy and psychiatric disorders, albeit with distinct involvement of neuronal substrates⁷⁷. This makes any rigid separation between epilepsy and some psychiatric disorders less stringent, and hence we included epilepsy in the discussion for the remarkable behavioural alterations and for the role of neuroinflammation in its pathogenesis.

The link between epilepsy and neuroinflammation is universally recognised⁷⁷. Persistent neuroinflammatory cascade due to cytokine load and BBB damage is associated with glial reactivity, synaptic changes, and the generation of hyper-excitable networks with lower seizure threshold which all promote epileptic activity¹⁴⁷. Epidemiological findings have indicated neuroinfection and systemic infections as one of major cause of acquired epilepsy^{148,149}. Viral encephalitis, for example, increases

the risk of subsequent seizures¹⁴⁹. Increased concentrations of IL-1 were detected in plasma and CSF of different epileptic phenotypes, suggesting this cytokine seizure-inducing properties¹⁵⁰. Changes in GABAergic transmission and reduction of astrocytic glutamate uptake may account for IL-1 dependent increase in susceptibility to epilepsy^{151,152}. Similarly, raised levels of IL-6 were reported in both plasma and CSF in patients suffering from a wide range of epileptic presentations, while this increased concentrations correlated with the severity of seizures¹⁵³. Capability of IL-6 to promote epileptogenesis is further corroborated by the evidence that IL-6 overexpression induces abnormal ictogenesis in mice hippocampus¹⁵⁴. Associations between epilepsy and COVID-19 have not yet been reported¹⁵⁵, however, American Epilepsy Society already suggested that COVID-19 could increase the risk of sudden unexpected death in epilepsy (SUDEP). There are some reports which indicate that infections, bacterial or viral may increase the risk of SUDEP. At present, there are no data on the association between COVID-19 and SUDEP¹⁵⁶.

COVID-19 and post-traumatic stress disorder

Generally, albeit incorrectly, it is assumed that once the trauma is over and the subject is no longer under the pressure of stress, the path for steady recovery begins, since the time heals all wounds. Unfortunately, this is not always the case because in susceptible subjects the active stress instigates brain processes whereby traumatic memories suddenly re-emerge and disturb the mental health. The persistence of these conditions generates the PTSD¹⁵⁷. The PTSD is no longer classified among anxiety disorders; it is considered a trauma or stress-related disorder¹⁵⁸. The pathogenetic link between inflammation and PTSD is well documented¹⁵⁹. Because of marked impact of stressors on the immune system, it is not surprising that PTSD is associated with the immune state¹⁶⁰. Increased concentrations of pro-inflammatory factors were observed both within systemic circulation and in the brain in the context of PTSD¹⁶¹. Activation of neuroglia induced by heavy or persistent stressors can stimulate aberrant secretion of pro-inflammatory signals which could potentially facilitate the appearance of PTSD. Data from meta-analyses confirm a remarkable increase in pro-inflammatory molecules in subjects with PTSD, including IL-6, TNF- α , and IL-1 β ¹⁶²⁻¹⁶⁴. The levels of IL-10, an anti-inflammatory interleukin, have been also increased, probably in an attempt to offset the inflammatory processes triggered by stress, further highlighting a close link between inflammation, stress and PTSD¹⁶⁵. The occurrence of PTSD was usually associated with occurrence of low-grade inflammation¹⁶⁶. Beside changes in cytokines, PTSD is also connected with enhanced NF- κ B expression, this transcription factor being implicated in the

inflammation process and its elevated expression correlated directly with PTSD severity¹⁶⁷. Moreover, PTSD is usually comorbid with depression as well as with anxiety, with drug addiction and with high frequency of suicide, since all these conditions share common inflammatory mechanisms into their pathogenetic processes¹⁶⁸. However, it remains to be elucidated whether in all cases the relationship is mutual and what factors, along with the inflammatory ones, play a causative role in determining the comorbidities observed. The PTSD can be a likely outcome for COVID-19 sufferers. This stems not only from severity of systemic inflammation and viral invasion into the brain, but also from the gravity of stress caused by an unexpected pandemic which, for the high mortality, has a shocking value.

Schizophrenia and viral infection

Significant number of psychotic episodes in the aftermath of Spanish flu pandemic has highlighted the possibility of increasing incidence of schizophrenic disorders in subjects infected with the SARS-COV-2¹⁶⁹. High levels of coronavirus immunoreactivity in subjects with recent onset of psychotic episodes as well as the serious neuropsychiatric complications including auditory and visual hallucinations as well as severe delusions have been reported in COVID-19 patients^{120,170,171}. Although neurodevelopmental origins of schizophrenia are generally accepted, other aetiological factors such as direct effect of a viral neuroinfection or indirect effect of immune aberrations occurring in adult subjects cannot be excluded¹⁷². Schizophrenia is also considered as a neurodegenerative illness in adulthood, with neuronal shrinkage and loss, oligodendrocyte damage, alterations in synaptic connectivity, all likely associated with cognitive impairments^{162–173}. Although there are no evidence directly linking COVID-19 with the risk of schizophrenia, frequent occurrence of psychotic episodes highlights the need for further, more detailed investigations.

Conclusions

The SARS-COV-2 pandemic poses a long-lasting challenge, which not only affects cardio-respiratory system but links systemic infection to neuropsychiatric diseases. Investigations of previous viral respiratory epidemics have demonstrated the onset of a wide range of psychiatric disorders over the course and in the aftermath of the infection. The pandemic of Spanish flu in 1918–1920 instigated speculation of the causative role of viral infection in the pathogenetic mechanism of behavioural disorders in bipolar and schizophrenic subjects. Karl Menninger was one of the first to declare that he was persuaded that dementia praecox (as schizophrenia was called in those days) is, in majority of instances, a somatopsychosis, “the psychic manifestations of an

encephalitis”¹⁷⁴. In the same period, Jacob Kasanin and J. W. Petersen suggested that “a thorough review of some of the early histories of atypical cases of schizophrenia or affective disorders may reveal a previous encephalitis”¹⁷⁵.

At present, there are few preliminary studies considering neuropsychiatric complications of COVID-19, however, on the basis of the results of the previous epidemics of various respiratory viruses it is possible to assume an increased incidence of mental pathologies as an unwanted sequelae. Not only SARS-COV-2 can penetrate the brain and cause direct damage to neuronal networks, the experience of potentially lethal and untreatable COVID-19 is the cause of a severe distress, which may induce long term behavioural changes or aggravate a pre-existing mental illness. Here we outlined possible neuropsychiatric complications that could arise in subjects infected with SARS-COV-2. Patients with COVID-19 could present with a wide range of neuropsychiatric symptoms, which result from systemic inflammation, CNS effects of cytokines, infection of neural cells by SARS-COV-2, neuroinflammation, glial dysfunction or aberrant epigenetic modifications of stress-related genes. This review was intended to draw special attention to the psychiatric aspects of COVID-19, because minimizing their relevance by claiming that sometimes “an abnormal reaction to an abnormal situation is a normal behaviour”¹⁷⁶ could be an unforgivable mistake.

Author details

¹University Magna Graecia, Catanzaro, Italy. ²Sapienza University Rome, Rome, Italy. ³Fortunato University, Benevento, Italy. ⁴Faculty of Biology, Medicine and Health, The University of Manchester, Manchester M13 9PT, UK. ⁵Achucarro Center for Neuroscience, IKERBASQUE, 48011 Bilbao, Spain. ⁶Sechenov First Moscow State Medical University, Moscow, Russia

Conflict of interest

The authors declare that they have no conflict of interest.

Publisher's note

Springer Nature remains neutral with regard to jurisdictional claims in published maps and institutional affiliations.

Received: 2 June 2020 Revised: 7 July 2020 Accepted: 14 July 2020

Published online: 30 July 2020

References

- Morens, D. M. & Fauci, A. S. The 1918 influenza pandemic: insights for the 21st century. *J. Infect. Dis.* **195**, 1018–1028 (2007).
- Lu, H., Stratton, C. W. & Tang, Y. W. Outbreak of pneumonia of unknown etiology in Wuhan, China: the mystery and the miracle. *J. Med. Virol.* **92**, 401–402 (2020).
- Hui, D. S. et al. The continuing 2019-nCoV epidemic threat of novel coronaviruses to global health - The latest 2019 novel coronavirus outbreak in Wuhan, China. *Int. J. Infect. Dis.* **91**, 264–266 (2020).
- Gorbalenya, A. E. et al. The species Severe acute respiratory syndrome-related coronavirus: classifying 2019-nCoV and naming it SARS-CoV-2. *Nat. Microbiol.* **5**, 536–544 (2020).
- Froude, S., Hughes, H. Newly discovered viruses. In: Firth, J., Conlon, C. & Cox, T. (eds) In: *Oxford Textbook of Medicine*. Oxford: Oxford University Press, 2020.

6. Liu, Z. et al. Composition and divergence of coronavirus spike proteins and host ACE2 receptors predict potential intermediate hosts of SARS-CoV-2. *J. Med. Virol.* <https://doi.org/10.1002/jmv.25726>. (2020).
7. Lu, R. et al. Genomic characterisation and epidemiology of 2019 novel coronavirus: implications for virus origins and receptor binding. *Lancet* **395**, 565–574 (2020).
8. Passos-Silva, D. G., Brandan, E. & Santos, R. A. S. Angiotensins as therapeutic targets beyond heart disease. *Trends Pharmacol. Sci.* **36**, 310–320 (2015).
9. Vickers, C. et al. Hydrolysis of biological peptides by human angiotensin-converting enzyme-related carboxypeptidase. *J. Biol. Chem.* **277**, 14838–14843 (2002).
10. Chen, T. et al. Clinical characteristics of 113 deceased patients with coronavirus disease 2019: retrospective study. *BMJ* **368**, m1091 (2020).
11. Zhou, P. et al. A pneumonia outbreak associated with a new coronavirus of probable bat origin. *Nature* **579**, 270–273 (2020).
12. Uhlén, M. et al. Tissue-based map of the human proteome. *Science (80-)* **347**. <https://doi.org/10.1126/science.1260419>. (2015).
13. Zorec, R., Županc, T. A. & Verkhatsky, A. Astroglipathology in the infectious insults of the brain. *Neurosci. Lett.* **689**, 56–62 (2019).
14. Dubé, M. et al. Axonal transport enables neuron-to-neuron propagation of human coronavirus OC43. *J. Virol.* **92**. <https://doi.org/10.1128/jvi.00404-18>. (2018).
15. Li, F. Receptor recognition and cross-species infections of SARS coronavirus. *Antivir. Res.* **100**, 246–254 (2013).
16. Li, F. Structure, function, and evolution of coronavirus spike proteins. *Annu Rev. Virol.* **3**, 237–261 (2016).
17. Qin, C., Li, J. & Tang, K. The paraventricular nucleus of the hypothalamus: Development, function, and human diseases. *Endocrinology* **159**, 3458–3472 (2018).
18. Talbot, P. J., Ekande, S., Cashman, N. R., Mouni, S., Stewart, J. N. Neurotropism of human coronavirus 229E. In: *Advances in Experimental Medicine and Biology*. **342**, 339–346 (1994).
19. Zhou, J. et al. Human intestinal tract serves as an alternative infection route for Middle East respiratory syndrome coronavirus. *Sci. Adv.* **3**, ea04966 (2017).
20. Gowrisankar, Y. V. & Clark, M. A. Angiotensin II regulation of angiotensin-converting enzymes in spontaneously hypertensive rat primary astrocyte cultures. *J. Neurochem* **138**, 74–85 (2016).
21. Xia, H. & Lazartigues, E. Angiotensin-converting enzyme 2: central regulator for cardiovascular function. *Curr. Hypertens. Rep.* **12**, 170–175 (2010).
22. Steardo, L., Steardo, L., Zorec, R., Verkhatsky, A. Neuroinfection may potentially contribute to pathophysiology and clinical manifestations of COVID-19. *Acta Physiol. (Oxf.)*. <https://doi.org/10.1111/apha.13473>. (2020).
23. Kristensson, K., Masocha, W., Bentivoglio, M. Mechanisms of CNS invasion and damage by parasites. In: *Handbook of Clinical Neurology*. **114**, 11–22 (2013).
24. Sisó, S., Jeffrey, M. & González, L. Sensory circumventricular organs in health and disease. *Acta Neuropathol.* **120**, 689–705 (2010).
25. Takagi, S., Furube, E., Nakano, Y., Morita, M. & Miyata, S. Microglia are continuously activated in the circumventricular organs of mouse brain. *J. Neuroimmunol.* **331**, 74–86 (2019).
26. Desforges, M., Le Coupance, A., Brison, É., Meessen-Pinard, M. & Talbot, P. J. Neuroinvasive and neurotropic human respiratory coronaviruses: potential neurovirulent agents in humans. *Adv. Exp. Med Biol.* **807**, 75–96 (2014).
27. De Wit, E., Van Doremalen, N., Falzarano, D. & Munster, V. J. SARS and MERS: recent insights into emerging coronaviruses. *Nat. Rev. Microbiol.* **14**, 523–534 (2016).
28. Fodoulian, L. et al. SARS-CoV-2 receptor and entry genes are expressed by sustentacular cells in the human olfactory neuroepithelium. *bioRxiv* 2020.2020.03.31.013268.
29. Perlman, S., Evans, G. & Afifi, A. Effect of olfactory bulb ablation on spread of a neurotropic coronavirus into the mouse brain. *J. Exp. Med.* **172**, 1127–1132 (1990).
30. Vaira, L. A., Salzano, G., Deiana, G., De Riu, G. Anosmia and ageusia: common findings in COVID-19 Patients. *Laryngoscope* <https://doi.org/10.1002/lary.28692>. (2020).
31. To, K. K.-W. et al. Temporal profiles of viral load in posterior oropharyngeal saliva samples and serum antibody responses during infection by SARS-CoV-2: an observational cohort study. *Lancet Infect. Dis.* [https://doi.org/10.1016/s1473-3099\(20\)30196-1](https://doi.org/10.1016/s1473-3099(20)30196-1). (2020).
32. Paniz-Mondolfi, A. et al. Central nervous system involvement by severe acute respiratory syndrome coronavirus —2 (SARS-CoV-2). *J. Med. Virol.* 2020: 699–702. E-pub ahead of print.
33. Bostancıklıoğlu, M. SARS-CoV2 entry and spread in the lymphatic drainage system of the brain. *Brain Behav. Immun.* **87**, 122–123 (2020).
34. Lochhead, J. J. & Thorne, R. G. Intranasal delivery of biologics to the central nervous system. *Adv. Drug Deliv. Rev.* **64**, 614–628 (2012).
35. Driessen, A. K., Farrell, M. J., Mazzone, S. B. & McGovern, A. E. Multiple neural circuits mediating airway sensations: recent advances in the neurobiology of the urge-to-cough. *Respir. Physiol. Neurobiol.* **226**, 115–120 (2016).
36. Wu, Y. et al. Nervous system involvement after infection with COVID-19 and other coronaviruses. *Brain Behav. Immun.* <https://doi.org/10.1016/j.bbi.2020.03.031>. (2020).
37. Bulfamante, G. et al. First ultrastructural autaptic findings of SARS-Cov-2 in olfactory pathways and brainstem. *Minerva Anestesiol.* <https://doi.org/10.23736/S0375-9393.20.14772-2>. (2020).
38. Ikeda, K. et al. The respiratory control mechanisms in the brainstem and spinal cord: integrative views of the neuroanatomy and neurophysiology. *J. Physiol. Sci.* **67**, 45–62 (2017).
39. Benarroch, E. E. Brainstem respiratory chemosensitivity: new insights and clinical implications. *Neurology* **68**, 2140–2143 (2007).
40. Goh, K. J. et al. Rapid progression to acute respiratory distress syndrome: review of current understanding of critical illness from COVID-19 infection. *Ann. Acad. Med. Singap.* **49**, 1–9 (2020).
41. Fitzgerald, S. The spread of COVID-19. *Neurol. Today* **20**, 1 (2020).
42. Alenina, N. & Bader, M. ACE2 in brain physiology and pathophysiology: evidence from transgenic animal models. *Neurochem Res* **44**, 1323–1329 (2019).
43. Diz, D. I. et al. Injections of angiotensin-converting enzyme 2 inhibitor MLN4760 into nucleus tractus solitarius reduce baroreceptor reflex sensitivity for heart rate control in rats. *Exp. Physiol.* **93**, 694–700 (2008).
44. Mehta, P. et al. COVID-19: consider cytokine storm syndromes and immunosuppression. *Lancet* **395**, 1033–1034 (2020).
45. Poyiadji, N. et al. COVID-19-associated acute hemorrhagic necrotizing encephalopathy: CT and MRI Features. *Radiology* 2020: 201187. E-pub ahead of print.
46. Filatov, A., Sharma, P., Hindi, F., Espinosa, P. S. Neurological Complications of Coronavirus Disease (COVID-19): Encephalopathy. *Cureus* **12**. <https://doi.org/10.7759/cureus.7352>. (2020).
47. Robinson, C. P. & Busl, K. M. Neurologic manifestations of severe respiratory viral contagions. *Crit. Care Explor* **2**, e0107 (2020).
48. Tauber, S. C., Eiffert, H., Brück, W. & Nau, R. Septic encephalopathy and septic encephalitis. *Expert Rev. Anti Infect. Ther.* **15**, 121–132 (2017).
49. Klok, F. A. et al. Incidence of thrombotic complications in critically ill ICU patients with COVID-19. *Thromb. Res* **191**, 145–147 (2020).
50. Lippi, G., Wong, J. & Henry, B. M. Hypertension in patients with coronavirus disease 2019 (COVID-19): a pooled analysis. *Pol. Arch. Intern Med* **130**, 304–309 (2020).
51. Schwartz, M., Kipnis, J., Rivest, S. & Prat, A. How do immune cells support and shape the brain in health, disease, and aging? *J. Neurosci.* **33**, 17587–17596 (2013).
52. Xu, J. et al. Detection of severe acute respiratory syndrome coronavirus in the brain: potential role of the chemokine mig in pathogenesis. *Clin. Infect. Dis.* **41**, 1089–1096 (2005).
53. Sankowski, R., Mader, S. & Valdés-Ferrer, S. I. Systemic inflammation and the brain: Novel roles of genetic, molecular, and environmental cues as drivers of neurodegeneration. *Front Cell Neurosci.* **9**, 28 (2015).
54. Schwartz, M. & Deczkowska, A. Neurological disease as a failure of brain-immune crosstalk: the multiple faces of neuroinflammation. *Trends Immunol.* **37**, 668–679 (2016).
55. Klein, R. S. et al. Neuroinflammation during RNA viral infections. *Annu Rev. Immunol.* **37**, 73–95 (2019).
56. Daniels, B. P. et al. Regional astrocyte IFN signaling restricts pathogenesis during neurotropic viral infection. *J. Clin. Invest.* **127**, 843–856 (2017).
57. Manglani, M. & McGavern, D. B. New advances in CNS immunity against viral infection. *Curr. Opin. Virol.* **28**, 116–126 (2018).
58. Pedersen S. F., Ho, Y.-C. SARS-CoV-2: A storm is raging. *J. Clin. Invest.* <https://doi.org/10.1172/jci137647>. (2020).
59. Taylor, C. T., Doherty, G., Fallon, P. G. & Cummins, E. P. Hypoxia-dependent regulation of inflammatory pathways in immune cells. *J. Clin. Invest* **126**, 3716–3724 (2016).
60. Verkhatsky, A., Zorec, R. & Parpura, V. Stratification of astrocytes in healthy and diseased brain. *Brain Pathol.* **27**, 629–644 (2017).

61. Mukandala, G., Tynan, R., Lanigan, S., O'Connor, J. J. The effects of hypoxia and inflammation on synaptic signaling in the CNS. *Brain Sci.* **6**. <https://doi.org/10.3390/brainsci6010006>. (2016).
62. Su, W., Aloï, M. S. & Garden, G. A. MicroRNAs mediating CNS inflammation: small regulators with powerful potential. *Brain Behav. Immun.* **52**, 1–8 (2016).
63. Kettenmann, H., Hanisch, U. K., Noda, M. & Verkhratsky, A. Physiology of microglia. *Physiol. Rev.* **91**, 461–553 (2011).
64. Pekny, M. et al. Astrocytes: a central element in neurological diseases. *Acta Neuropathol.* **131**, 323–345 (2016).
65. Calcia, M. A. et al. Stress and neuroinflammation: a systematic review of the effects of stress on microglia and the implications for mental illness. *Psychopharmacol.* **233**, 1637–1650 (2016).
66. O'Callaghan, J. P. & Miller, D. B. Neuroinflammation disorders exacerbated by environmental stressors. *Metabolism* **100**, 153951 (2019).
67. McEwen, B. S., Gray, J. & Nasca, C. Recognizing resilience: learning from the effects of stress on the brain. *Neurobiol. Stress* **1**, 1–11 (2015).
68. Rao, N. A. S. et al. Coactivation of GR and NFκB alters the repertoire of their binding sites and target genes. *Genome Res* **21**, 1404–1416 (2011).
69. Bright, F. et al. Neuroinflammation in frontotemporal dementia. *Nat. Rev. Neurol.* **15**, 540–555 (2019).
70. Heppner, F. L., Ransohoff, R. M. & Becher, B. Immune attack: the role of inflammation in Alzheimer disease. *Nat. Rev. Neurosci.* **16**, 358–372 (2015).
71. Rocha, E. M., De Miranda, B. & Sanders, L. H. Alpha-synuclein: pathology, mitochondrial dysfunction and neuroinflammation in Parkinson's disease. *Neurobiol. Dis.* **109**, 249–257 (2018).
72. Bakunina, N., Pariante, C. M. & Zunszain, P. A. Immune mechanisms linked to depression via oxidative stress and neuroprogression. *Immunology* **144**, 365–373 (2015).
73. Marques, T. R. et al. Neuroinflammation in schizophrenia: meta-analysis of in vivo microglial imaging studies. *Psychol. Med* **49**, 2186–2196 (2019).
74. Bjorklund, G. et al. Immune dysfunction and neuroinflammation in autism spectrum disorder. *Acta Neurol. Exp. (Wars.)* **76**, 257–268 (2016).
75. Kohno, M. et al. Neuroinflammation in addiction: a review of neuroimaging studies and potential immunotherapies. *Pharm. Biochem. Behav.* **179**, 34–42 (2019).
76. Nadjar, A., Wigren, H.-K. M. & Tremblay, M.-E. Roles of microglial phagocytosis and inflammatory mediators in the pathophysiology of sleep disorders. *Front Cell Neurosci.* **11**, 250 (2017).
77. Vezzani, A., Balosso, S. & Ravizza, T. Neuroinflammatory pathways as treatment targets and biomarkers in epilepsy. *Nat. Rev. Neurol.* **15**, 459–472 (2019).
78. Troyer, E. A., Kohn, J. N. & Hong, S. Are we facing a crashing wave of neuropsychiatric sequelae of COVID-19? Neuropsychiatric symptoms and potential immunologic mechanisms. *Brain Behav. Immun.* **87**, 34–39 (2020).
79. Salluh, J. I. F. et al. Outcome of delirium in critically ill patients: systematic review and meta-analysis. *BMJ* **350**, 1–10. (2015).
80. Chung, H.-Y., Wickel, J., Brunkhorst, F. M. & Geis, C. Sepsis-associated encephalopathy: from delirium to dementia? *J. Clin. Med* **9**, 703 (2020).
81. Streit, W. J., Braak, H., Xue, Q. S. & Bechmann, I. Dystrophic (senescent) rather than activated microglial cells are associated with tau pathology and likely precede neurodegeneration in Alzheimer's disease. *Acta Neuropathol.* **118**, 475–485 (2009).
82. Streit, W. J., Khoshbouei, H. & Bechmann, I. Dystrophic microglia in late-onset Alzheimer's disease. *Glia* **68**, 845–854 (2020).
83. Verkhratsky, A., Rodriguez, J. J., Pivoriunas, A., Zorec, R. & Semyanov, A. Astroglial atrophy in Alzheimer's disease. *Pflug. Arch. Eur. J. Physiol.* **471**, 1247–1261 (2019).
84. Rodríguez, J. J. et al. Complex and region-specific changes in astroglial markers in the aging brain. *Neurobiol. Aging* **35**, 15–23 (2014).
85. Fotuhi M., Mian A., Meysami S., Raji C. A. Neurobiology of COVID-19. *J. Alzheimers Dis.* <https://doi.org/10.3233/JAD-200581>. (2020).
86. Rogers, J. P. et al. Psychiatric and neuropsychiatric presentations associated with severe coronavirus infections: a systematic review and meta-analysis with comparison to the COVID-19 pandemic. *Lancet Psychiatry* **7**, 611–627 (2020).
87. Guzman-Martinez, L. et al. Neuroinflammation as a common feature of neurodegenerative disorders. *Front. Pharm.* **10**, 1–17. (2019).
88. Chen, W. W., Zhang, X. & Huang, W. J. Role of neuroinflammation in neurodegenerative diseases (Review). *Mol. Med Rep.* **13**, 3391–3396 (2016).
89. Widmann, C. N. & Heneka, M. T. Long-term cerebral consequences of sepsis. *Lancet Neurol.* **13**, 630–636 (2014).
90. Holmes, C. et al. Systemic inflammation and disease progression in Alzheimer disease. *Neurology* **73**, 768–774 (2009).
91. Shen, X.-N. et al. Inflammatory markers in Alzheimer's disease and mild cognitive impairment: a meta-analysis and systematic review of 170 studies. *J. Neurol. Neurosurg. Psychiatry* **90**, 590–598 (2019).
92. Foley, N. C., Affoo, R. H. & Martin, R. E. A systematic review and meta-analysis examining pneumonia-associated mortality in dementia. *Dement. Geriatr. Cogn. Disord.* **39**, 52–67 (2015).
93. Verreault, R., Laurin, D., Lindsay, J. & De Serres, G. Past exposure to vaccines and subsequent risk of Alzheimer's disease. *CMAJ* **165**, 1495–1498 (2001).
94. Kotfis, K., Skonieczna-Zydecka, K. COVID-19: gastrointestinal symptoms and potential sources of 2019-nCoV transmission. *Anaesthesiol Intensive Ther.* <https://doi.org/10.5114/ait.2020.93867>. (2020).
95. Nettis, M. A., Pariante, C. M. & Mondelli, V. Early-life adversity, systemic inflammation and comorbid physical and psychiatric illnesses of adult life. *Curr. Top. Behav. Neurosci.* **44**, 207–225 (2020).
96. Verkhratsky, A., Rodriguez, J. J. & Steardo, L. Astroglial pathology: a central element of neuropsychiatric diseases? *Neuroscientist* **20**, 576–588 (2014).
97. Dilger, R. N. & Johnson, R. W. Aging, microglial cell priming, and the discordant central inflammatory response to signals from the peripheral immune system. *J. Leukoc. Biol.* **84**, 932–939 (2008).
98. Thomas, A. J. et al. Increase in interleukin-1β in late-life depression. *Am. J. Psychiatry* **162**, 175–177 (2005).
99. Schmidt, F. M. et al. Pro- and anti-inflammatory cytokines, but not CRP, are inversely correlated with severity and symptoms of major depression. *Psychiatry Res* **239**, 85–91 (2016).
100. Chamberlain, S. R. et al. Treatment-resistant depression and peripheral C-reactive protein. *Br. J. Psychiatry* **214**, 11–19 (2019).
101. Osimo, E. F. et al. Inflammatory markers in depression: a meta-analysis of mean differences and variability in 5,166 patients and 5,083 controls. *Brain Behav. Immun.* <https://doi.org/10.1016/j.bbi.2020.02.010>. (2020).
102. Aziz, M., Aziz, M., Fatima, R., Assaly, R. Elevated interleukin-6 and severe COVID-19: a meta-analysis. *J. Med. Virol.* <https://doi.org/10.1002/jmv.259480>. (2020). E-pub ahead of print.
103. Lindqvist, D. et al. Interleukin-6 is elevated in the cerebrospinal fluid of suicide attempters and related to symptom severity. *Biol. Psychiatry* **66**, 287–292 (2009).
104. Sasayama, D. et al. Increased cerebrospinal fluid interleukin-6 levels in patients with schizophrenia and those with major depressive disorder. *J. Psychiatr. Res* **47**, 401–406 (2013).
105. Kern, S. et al. Higher CSF interleukin-6 and CSF interleukin-8 in current depression in older women. Results from a population-based sample. *Brain Behav. Immun.* **41**, 55–58 (2014).
106. Enache, D., Pariante, C. M. & Mondelli, V. Markers of central inflammation in major depressive disorder: A systematic review and meta-analysis of studies examining cerebrospinal fluid, positron emission tomography and post-mortem brain tissue. *Brain Behav. Immun.* **81**, 24–40 (2019).
107. Boufidou, F. et al. CSF and plasma cytokines at delivery and postpartum mood disturbances. *J. Affect. Disord.* **115**, 287–292 (2009).
108. Hodes, G. E., Ménard, C. & Russo, S. J. Integrating Interleukin-6 into depression diagnosis and treatment. *Neurobiol. Stress.* **4**, 15–22 (2016).
109. Campbell, I. L. et al. Trans-signaling is a dominant mechanism for the pathogenic actions of interleukin-6 in the brain. *J. Neurosci.* **34**, 2503–2513 (2014).
110. Van Wagoner, N. J. & Benveniste, E. N. Interleukin-6 expression and regulation in astrocytes. *J. Neuroimmunol.* **100**, 124–139 (1999).
111. Ma, X. et al. IL-17 enhancement of the IL-6 signaling cascade in astrocytes. *J. Immunol.* **184**, 4898–4906 (2010).
112. Hsu, M. P., Frausto, R., Rose-John, S. & Campbell, I. L. Analysis of IL-6/gp130 family receptor expression reveals that in contrast to astroglia, microglia lack the oncostatin M receptor and functional responses to oncostatin M. *Glia* **63**, 132–141 (2015).
113. Spooren, A. et al. Interleukin-6, a mental cytokine. *Brain Res. Rev.* **67**, 157–183 (2011).
114. Baran, P. et al. The balance of interleukin (IL)-6, IL-6soluble IL-6 receptor (sIL-6R), and IL-6sIL-6Rsgp130 complexes allows simultaneous classic and trans-signaling. *J. Biol. Chem.* **293**, 6762–6775 (2018).
115. Coomes, E. A., Haghbayan, H. Interleukin-6 in COVID-19: a systematic review and meta-analysis. *medRxiv* 2020; 2020.03.30.20048058.
116. Kalkman, H. O. Novel treatment targets based on insights in the etiology of depression: Role of IL-6 trans-signaling and stress-induced elevation of glutamate and ATP. *Pharmaceuticals.* **12**. <https://doi.org/10.3390/ph12030113>. (2019).

117. Gananga, L. et al. The role of cytokines in the pathophysiology of suicidal behavior. *Psychoneuroendocrinology* **63**, 296–310 (2016).
118. Isung, J. et al. High interleukin-6 and impulsivity: determining the role of endophenotypes in attempted suicide. *Transl. Psychiatry* **4**, e470 (2014).
119. Takahashi, A., Flanigan, M. E., McEwen, B. S., Russo, S. J. Aggression, social stress, and the immune system in humans and animal models. *Front. Behav. Neurosci.* **12**. <https://doi.org/10.3389/fnbeh.2018.00056>. (2018).
120. Li, S., Wang, Y., Xue, J., Zhao, N., Zhu T. The impact of covid-19 epidemic declaration on psychological consequences: A study on active weibo users. *Int. J. Environ. Res. Public Health.* **17**. <https://doi.org/10.3390/ijerph17062032>. (2020).
121. Pinto, J. V. et al. Neuron-glia interaction as a possible pathophysiological mechanism of bipolar disorder. *Curr. Neuropharmacol.* **15**. <https://doi.org/10.2174/1570159x15666170828170921>. (2017).
122. Felger, J. C. Imaging the role of inflammation in mood and anxiety-related disorders. *Curr. Neuropharmacol.* **15**. <https://doi.org/10.2174/1570159x15666171123201142>. (2017).
123. Sayana, P. et al. A systemic review of evidence for the role of inflammatory biomarkers in bipolar patients. *J. Psychiatr. Res.* **92**, 160–182 (2017).
124. Munkholm, K., Bräuner, J. V., Kessing, L. V. & Vinberg, M. Cytokines in bipolar disorder vs. healthy control subjects: a systematic review and meta-analysis. *J. Psychiatr. Res.* **47**, 1119–1133 (2013).
125. Isgren, A. et al. Markers of neuroinflammation and neuronal injury in bipolar disorder: relation to prospective clinical outcomes. *Brain Behav. Immun.* **65**, 195–201 (2017).
126. Wang, A. & Miller, B. Meta-analysis of cerebrospinal fluid cytokine and tryptophan catabolite alterations in psychiatric patients: comparisons between schizophrenia, bipolar disorder, and depression. *Schizophr. Bull.* **44**, 75–83 (2018).
127. Goldsmith, D. R., Rapaport, M. H., Miller, B. J. A. Meta-analysis of blood cytokine network alterations in psychiatric patients: Comparisons between schizophrenia, bipolar disorder and depression. In: *Molecular Psychiatry*. Nature Publishing Group, 1696–1709 (2016).
128. Pillinger, T. et al. A meta-analysis of immune parameters, variability, and assessment of modal distribution in psychosis and test of the immune subgroup hypothesis. *Schizophr. Bull.* **45**, 1120–1133 (2019).
129. Corsi-Zuelli, F. et al. Cytokine profile in first-episode psychosis, unaffected siblings and community-based controls: the effects of familial liability and childhood maltreatment. *Psychol Med* 2019: 1–9. E-pub ahead of print.
130. Miller, B. J., Buckley, P., Seabolt, W., Mellor, A. & Kirkpatrick, B. Meta-analysis of cytokine alterations in schizophrenia: clinical status and antipsychotic effects. *Biol. Psychiatry* **70**, 663–671 (2011).
131. Metcalf, S. A. et al. Serum C-reactive protein in adolescence and risk of schizophrenia in adulthood: a prospective birth cohort study. *Brain Behav. Immun.* **59**, 253–259 (2017).
132. Khanna, S., Ravi, V., Shenoy, P. K., Chandramukhi, A. & Channabasavanna, S. M. Viral antibodies in blood in obsessive compulsive disorder. *Indian J Psychiatry* **39**, 190–195 (1997).
133. Paul, M. Murchinsky. No title. *Psychol. Appl Work Introd. Ind. Organ Psychol. Tenth Ed. Paul.* **53**, 1689–1699 (2012).
134. Rail, D., Scholtz, C. & Swash, M. Post-encephalitic Parkinsonism: current experience. *J. Neurol. Neurosurg. Psychiatry* **44**, 670–676 (1981).
135. Barton, R. Diabetes insipidus and obsessional neurosis. *Lancet* **16**, 133–135 (1965).
136. Grimshaw, L. Obsessional disorder and neurological illness. *J. Neurol. Neurosurg. Psychiatry* **27**, 229–231 (1964).
137. Bode, L. & Ludwig, H. Borna disease virus infection, a human mental-health risk. *Clin. Microbiol Rev.* **16**, 534–545 (2003).
138. Dietrich, D. E. et al. Brain potential amplitude varies as a function of Borna disease virus-specific immune complexes in obsessive-compulsive disorder. *Mol. Psychiatry* **10**, 519–520 (2005).
139. Snider, L. A. & Swedo, S. E. PANDAS: current status and directions for research. *Mol. Psychiatry* **9**, 900–907 (2004).
140. Murphy, T. K., Sajid, M. W. & Goodman, W. K. Immunology of obsessive-compulsive disorder. *Psychiatr. Clin. North Am.* **29**, 445–469 (2006).
141. Gray, S. M. & Bloch, M. H. Systematic review of proinflammatory cytokines in obsessive-compulsive disorder. *Curr. Psychiatry Rep.* **14**, 220–228 (2012).
142. Karagüzel, E. Ö. et al. Blood levels of interleukin-1 beta, interleukin-6 and tumor necrosis factor-alpha and cognitive functions in patients with obsessive compulsive disorder. *Compr. Psychiatry* **89**, 61–66 (2019).
143. Rao, N. P. et al. Plasma cytokine abnormalities in drug-naïve, comorbidity-free obsessive-compulsive disorder. *Psychiatry Res* **229**, 949–952 (2015).
144. Lopez, M. R., Schachter, S. C. & Kanner, A. M. Psychiatric comorbidities go unrecognized in patients with epilepsy: “You see what you know”. *Epilepsy Behav.* **98**, 302–305 (2019).
145. Salpekar, J. A. & Mula, M. Common psychiatric comorbidities in epilepsy: how big of a problem is it? *Epilepsy Behav.* **98**, 293–297 (2019).
146. Bermeo-Ovalle, A. Psychiatric comorbidities go untreated in patients with epilepsy: ignorance or denial? *Epilepsy Behav.* **98**, 306–308 (2019).
147. Terrone, G., Balosso S., Pauletti, A., Ravizza T., Vezzani A. Inflammation and reactive oxygen species as disease modifiers in epilepsy. *Neuropharmacology*. **167**. <https://doi.org/10.1016/j.neuropharm.2019.107742>. (2020).
148. Annegers, J. F., Hauser, W. A., Beghi, E., Nicolosi, A. & Kurland, L. T. The risk of unprovoked seizures after encephalitis and meningitis. *Neurology* **38**, 1407–1410 (1988).
149. Marks, D. A., Kim, J., Spencer, D. D. & Spencer, S. S. Characteristics of intractable seizures following meningitis and encephalitis. *Neurology* **42**, 1513–1518 (1992).
150. de Vries, E. E. Inflammatory mediators in human epilepsy: a systematic review and meta-analysis. *Neurosci. Biobehav. Rev.* **63**, 177–190 (2016).
151. Wang, S., Cheng, Q., Malik, S. & Yang, J. Interleukin-1 β inhibits γ -aminobutyric acid type A (GABA(A)) receptor current in cultured hippocampal neurons. *J. Pharm. Exp. Ther.* **292**, 497–504 (2000).
152. Hu, S., Sheng, W. S., Ehrlich, L. C., Peterson, P. K. & Chao, C. C. Cytokine effects on glutamate uptake by human astrocytes. *Neuroimmunomodulation* **7**, 153–159 (2000).
153. Lehtimäki, K. A. et al. Regulation of IL-6 system in cerebrospinal fluid and serum compartments by seizures: the effect of seizure type and duration. *J. Neuroimmunol.* **152**, 121–125 (2004).
154. Samland, H. et al. Profound increase in sensitivity to glutamatergic- but not cholinergic agonist-induced seizures in transgenic mice with astrocyte production of IL-6. *J. Neurosci.* **73**, 176–187 (2003).
155. Asadi-Pooya, A. A. & Simani, L. Central nervous system manifestations of COVID-19: A systematic review. *J. Neurol. Sci.* **413**, 116832 (2020).
156. Sveinsson, O., Andersson, T., Mattsson, P., Carlsson, S. & Tomson, T. Clinical risk factors in SUDEP: a nationwide population-based case-control study. *Neurology* **94**, e419–e429. (2020).
157. Kapfhammer, H. P., Rothenhäusler, H. B., Krauseneck, T., Stoll, C. & Schelling, G. Posttraumatic stress disorder and health-related quality of life in long-term survivors of acute respiratory distress syndrome. *Am. J. Psychiatry* **161**, 45–52 (2004).
158. American Psychiatric Association. Diagnostic and Statistical Manual of Mental Disorders. *DSM-5*. 5th ed. Arlington, VA: American Psychiatric Publishing, 2013.
159. Furtado, M. & Katzman, M. A. Neuroinflammatory pathways in anxiety, posttraumatic stress, and obsessive compulsive disorders. *Psychiatry Res* **229**, 37–48 (2015).
160. Schelling, G. et al. Stress doses of hydrocortisone, traumatic memories, and symptoms of posttraumatic stress disorder in patients after cardiac surgery: a randomized study. *Biol. Psychiatry* **55**, 627–633 (2004).
161. Yang, J. J. & Jiang, W. Immune biomarkers alterations in post-traumatic stress disorder: a systematic review and meta-analysis. *J. Affect Disord.* **268**, 39–46 (2020).
162. Lindqvist, D. et al. Increased pro-inflammatory milieu in combat related PTSD – A new cohort replication study. *Brain Behav. Immun.* **59**, 260–264 (2017).
163. Bersani, F. S. et al. Global arginine bioavailability, a marker of nitric oxide synthetic capacity, is decreased in PTSD and correlated with symptom severity and markers of inflammation. *Brain Behav. Immun.* **52**, 153–160 (2016).
164. Lanius, R. A. Association of trauma exposure with proinflammatory activity: a transdiagnostic meta-analysis. *Transl. Psychiatry* **4**, e413 (2014).
165. de Oliveira, J. F. et al. Serum levels of interleukins IL-6 and IL-10 in individuals with posttraumatic stress disorder in a population-based sample. *Psychiatry Res* **260**, 111–115 (2018).
166. Spitzer, C. et al. Association of posttraumatic stress disorder with low-grade elevation of C-reactive protein: Evidence from the general population. *J. Psychiatr. Res.* **44**, 15–21 (2010).
167. Pace, T. W. W. et al. Increased peripheral NF- κ B pathway activity in women with childhood abuse-related posttraumatic stress disorder. *Brain Behav. Immun.* **26**, 13–17 (2012).
168. Shalev, A., Liberzon, I. & Marmar, C. Post-traumatic stress disorder. *N. Engl. J. Med.* **376**, 2459–2469 (2017).

169. Brown, E. et al. The potential impact of COVID-19 on psychosis: a rapid review of contemporary epidemic and pandemic research. *Schizophr. Res.* <https://doi.org/10.1016/j.schres.2020.05.005>. (2020).
170. Severance, E. et al. Coronavirus immunoreactivity in individuals with a recent onset of psychotic symptoms. *Schizophr. Bull.* **37**, 101–107 (2011).
171. Cheng, S. K. W., Tsang, J. S. K., Ku, K. H., Wong, C. W. & Ng, Y. K. Psychiatric complications in patients with severe acute respiratory syndrome (SARS) during the acute treatment phase: a series of 10 cases. *Br. J. Psychiatry* **184**, 359–360 (2004).
172. Carter, C. Schizophrenia: a pathogenetic autoimmune disease caused by viruses and pathogens and dependent on genes. *J. Pathog.* **2011**. <https://doi.org/10.4061/2011/128318>. (2011).
173. Severance, E. G., Yolken, R. H. Deciphering microbiome and neuroactive immune gene interactions in schizophrenia. *Neurobiol. Dis.* **135**. <https://doi.org/10.1016/j.nbd.2018.11.016>. (2020).
174. Menninger, K. A. Influenza and schizophrenia. *Am. J. Psychiatry* **82**, 469–529 (1926).
175. Kasanin, J. & Petersen, J. W. Psychosis as an early sign of epidemic encephalitis. *J. Nerv. Ment. Dis.* **64**, 352–358 (1926).
176. Frankl, V. Man's search for meaning. (Beacon Press: Boston, 1959).