

# **Facile Modification of Polycaprolactone Nanofibers with Egg White Protein**

Nergis Zeynep Renkler<sup>1\*</sup>, Emre Ergene<sup>2</sup>, Seyda Gokyer<sup>2</sup>, Merve Tuzlakoglu Ozturk<sup>3</sup>,

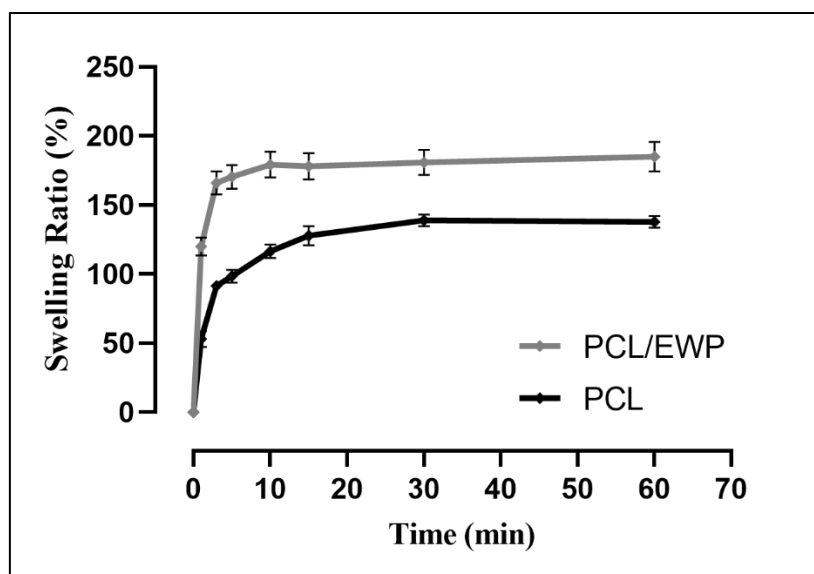
Pinar Yilgor Huri<sup>2</sup>, Kadriye Tuzlakoglu<sup>1</sup>

<sup>1</sup> Yalova University, Department of Polymer Engineering, 77200, Yalova, Turkey

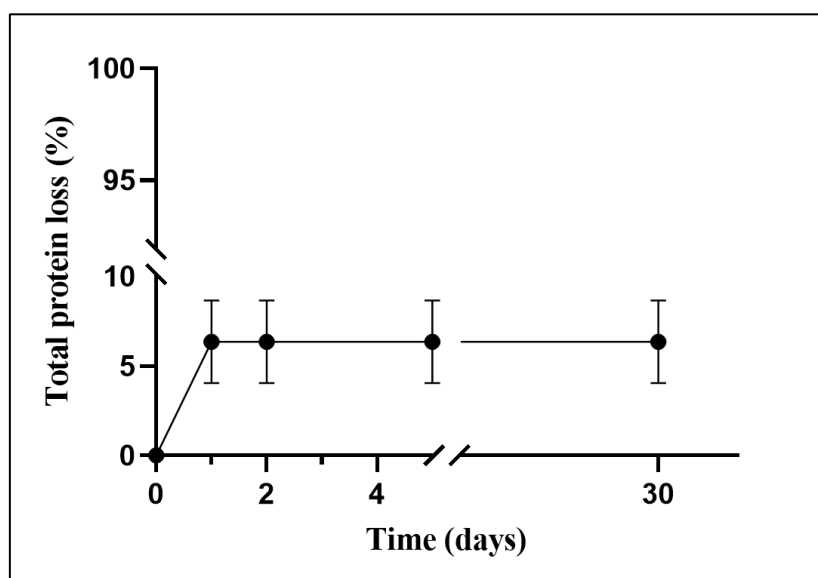
<sup>2</sup> Ankara University, Department of Biomedical Engineering, Ankara, Turkey

<sup>3</sup> Gebze Technical University, Department of Molecular Biology and Genetics, Kocaeli, Turkey

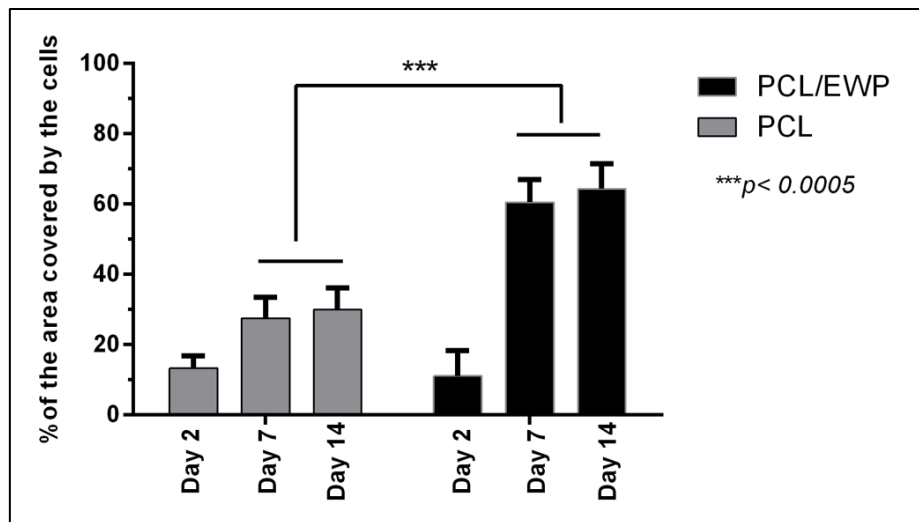
\*Correspondence to: Nergis Zeynep Renkler (E-mail: [nzrenkler@gmail.com](mailto:nzrenkler@gmail.com))



**Fig. S1** Swelling ratio of PCL/EWP and PCL mats over time (n=4)



**Fig. S2** The amount of protein loss from the PCL/EWP mats over time (n=4)



**Fig. S3** Area covered by the ASCs on PCL/EWP and PCL mats on days 2, 7, and 14