

RESEARCH

Open Access

Molecular cloning, expression and biochemical characterisation of a cold-adapted novel recombinant chitinase from *Glaciozyma antarctica* PI12

Aizi Nor Mazila Ramli¹, Nor Muhammad Mahadi², Amir Rabu³, Abdul Munir Abdul Murad³, Farah Diba Abu Bakar³ and Rosli Md Illias^{1*}

Abstract

Background: Cold-adapted enzymes are proteins produced by psychrophilic organisms that display a high catalytic efficiency at extremely low temperatures. Chitin consists of the insoluble homopolysaccharide β -(1, 4)-linked *N*-acetylglucosamine, which is the second most abundant biopolymer found in nature. Chitinases (EC 3.2.1.14) play an important role in chitin recycling in nature. Biodegradation of chitin by the action of cold-adapted chitinases offers significant advantages in industrial applications such as the treatment of chitin-rich waste at low temperatures, the biocontrol of phytopathogens in cold environments and the biocontrol of microbial spoilage of refrigerated food.

Results: A gene encoding a cold-adapted chitinase (CHI II) from *Glaciozyma antarctica* PI12 was isolated using Rapid Amplification of cDNA Ends (RACE) and RT-PCR techniques. The isolated gene was successfully expressed in the *Pichia pastoris* expression system. Analysis of the nucleotide sequence revealed the presence of an open reading frame of 1,215 bp, which encodes a 404 amino acid protein. The recombinant chitinase was secreted into the medium when induced with 1% methanol in BMMY medium at 25°C. The purified recombinant chitinase exhibited two bands, corresponding to the non-glycosylated and glycosylated proteins, by SDS-PAGE with molecular masses of approximately 39 and 50 kDa, respectively. The enzyme displayed an acidic pH characteristic with an optimum pH at 4.0 and an optimum temperature at 15°C. The enzyme was stable between pH 3.0-4.5 and was able to retain its activity from 5 to 25°C. The presence of K⁺, Mn²⁺ and Co²⁺ ions increased the enzyme activity up to 20%. Analysis of the insoluble substrates showed that the purified recombinant chitinase had a strong affinity towards colloidal chitin and little effect on glycol chitosan. CHI II recombinant chitinase exhibited higher V_{max} and K_{cat} values toward colloidal chitin than other substrates at low temperatures.

Conclusion: By taking advantage of its high activity at low temperatures and its acidic pH optimum, this recombinant chitinase will be valuable in various biotechnological applications under low temperature and acidic pH conditions.

Keywords: Cold-adapted chitinase, *Glaciozyma antarctica*, PI12. Psychrophilic yeast, *Pichia pastoris*

* Correspondence: r-rosli@utm.my

¹Department of Bioprocess Engineering, Faculty of Chemical Engineering, Universiti Teknologi Malaysia, 81310 Skudai, Johor, Malaysia
Full list of author information is available at the end of the article

Background

Extremophiles are microorganisms that can grow and thrive in extreme environments. Proteins, especially enzymes, isolated from the extremophiles are of particular interest because of their ability to function effectively and remain stable near extreme conditions [1]. Psychrophiles are organisms that live at very low temperatures and can be found in several perennially cold environments, such as the Antarctic. The survival of the psychrophilic organisms at low temperatures (cold-adaptation) are due to several factors such as temperature sensing, reduced membrane fluidity, stabilised inhibitory nucleic acid structures, the formation of intracellular crystalline ice and cellular responses that counteract solute uptake rates and lowered enzyme reactions [2]. Recently, psychrophilic enzymes are becoming more attractive in industrial applications, partly because of ongoing efforts to decrease energy consumption. At low temperatures, the kinetic energy of reacting molecules is too low to allow reactions to occur. Psychrophilic or cold-adapted enzymes compensate in this situation by having a highly flexible protein structure and conformation, thereby increasing their thermostability and a high catalytic efficiency at a low energy cost [2,3]. To date, many cold-adapted enzymes have been successfully isolated and their expression studies have also been conducted. This includes the glycosyl hydrolase group of enzymes, such as lipases [4], α -Amylases [5] and chitinases [6,7].

Chitin is the most abundant biopolymer found in nature after cellulose and attracted special interest as a reusable material [6,8]. This polysaccharide is a crucial structural component in fungal cell walls and certain green algae and is a major constituent in the shells, cuticles and exoskeletons of worms, molluscs and arthropods, including crustaceans and insects [7]. Chitin comprises 20 to 58% of the dry weight of the marine invertebrates, which include shrimp, crabs, squids, oysters and cuttlefish [9]. The enormous amounts of chitin continuously generated in nature require disposal and recycling on a formidable scale [10]. Previous studies revealed the broad range applications of chitin in various biochemical, food and chemical industries. Patil *et al.* [11] showed that chitin can be used in human health care as an antimicrobial, anticholesterol or antitumor agent. Chitin and its derivatives are also used in wastewater treatment, drug delivery, wound healing and dietary fibre [12]. Due to chitin's important biological role, its synthesis and degradation has been the subject of extensive research.

Chitinases catalyse the hydrolysis of β -1, 4-linkages in chitin. Many organisms produce chitinases for different purposes [13]. Chitinases produced by bacteria and

plants are important for nutritive purposes and in fungal invasion, respectively. All chitin-containing organisms such as fungi and yeast produce chitinases (EC 2.4.1.14) and chitin synthase (EC 2.4.1.16) to mediate cell wall synthesis and growth [12,14]. Chitinases are classified into two families of glycosyl hydrolases, family 18 and family 19, based on the amino acid sequence of the catalytic regions [15]. Family 18 contains chitinases from bacteria, fungi, viruses, animals and some plants [7]. Cold-adapted chitinases are always characterised by low optimal temperatures and increased structural flexibility that is achieved through a combination of structural features [16]. Heat labile and cold-adapted chitinases have been reported from several psychrophilic bacteria [7,17], plants [18] and fungi [19]. However, a cold-adapted chitinase from psychrophilic or psychrotolerant yeast has yet to be reported.

Due to difficulties in getting significant amount of native chitinase of *G. antarctica* PI12 for protein purification, initial expression of the CHI II gene was carried out in *E. coli* system. However no expression was observed (data not shown). This could be due to the reduced stability of recombinant psychrophilic proteins expressed in a mesophilic host such as *E. coli* [20,21]. An alternative host to *E. coli* is the methylotrophic yeast, *P. pastoris* which can be regarded as a moderate psychrotrophic organism that can grow at temperature as low as 12°C. This strain has emerged as a powerful and inexpensive expression system for the production of the eukaryotic recombinant proteins [22].

In this study, we described the isolation and recombinant expression of a psychrophilic chitinase (CHI II) gene from *G. antarctica* PI12 in *P. pastoris*. Purification and characterisation of the expressed recombinant CHI II were also conducted. Subsequent biochemical characterisation of this enzyme suggests its usefulness in some biotechnology applications.

Results and Discussion

Cloning and sequence analysis of CHI II from *G. antarctica* PI12

A nucleotide sequence obtained from a GSS survey of the *G. antarctica* PI12 genome was identified to encode the consensus domain of the glycosyl hydrolase family 18 using NCBI databases. Further analyses suggest that the nucleotide sequence encoded part of a chitinase gene sequence. Isolation of the full-length chitinase gene was accomplished by RT-PCR followed by RACE amplification. A DNA fragment of approximately 500 bp was obtained from the RT-PCR method. Due to a lack of DNA information for the *G. antarctica* PI12 chitinase, RACE techniques were used to amplify the full-length cDNA sequence. The RACE method was

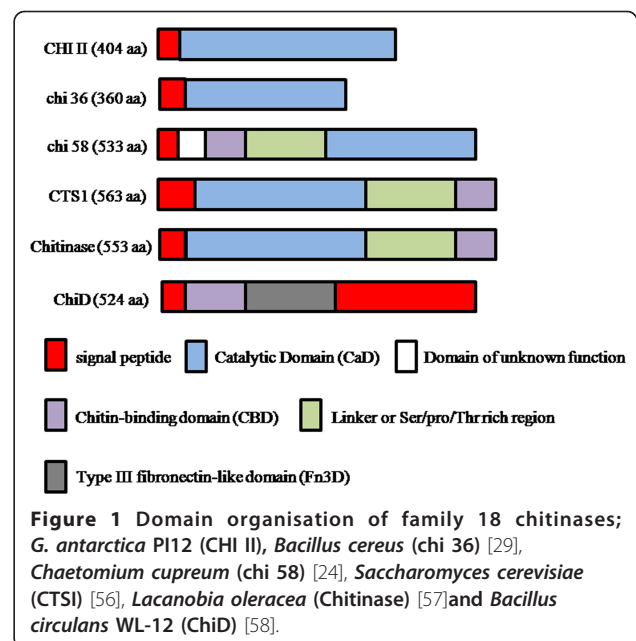
conducted using the RNA of *G. antarctica* PI12 and the 5' and 3' portion sequence of the full-length cDNA was obtained by 5' and 3' RACE, respectively. About 1100 bp was amplified from 5' RACE and approximately 1200 bp from 3' RACE. Conjugation of the 5' and 3' fragments revealed a full-length chitinase cDNA of 1215 bp containing a 404 bp ORF, a 448 bp 5' untranslated region and a 121 bp untranslated flank at 3' end. The latter includes a polyadenylation signal AATAAA located 23 bp to the 5' side of the poly A tail and a ATTTA sequence, which is involved in the targeting of mRNAs for rapid turnover. Based upon the RACE sequences, a set of primers was designed (CHI-For and CHI-Rev) and the full-length cDNA sequence was amplified via the RT-PCR method. The cDNA sequence was deposited into GenBank with the Accession No.: JF901326.

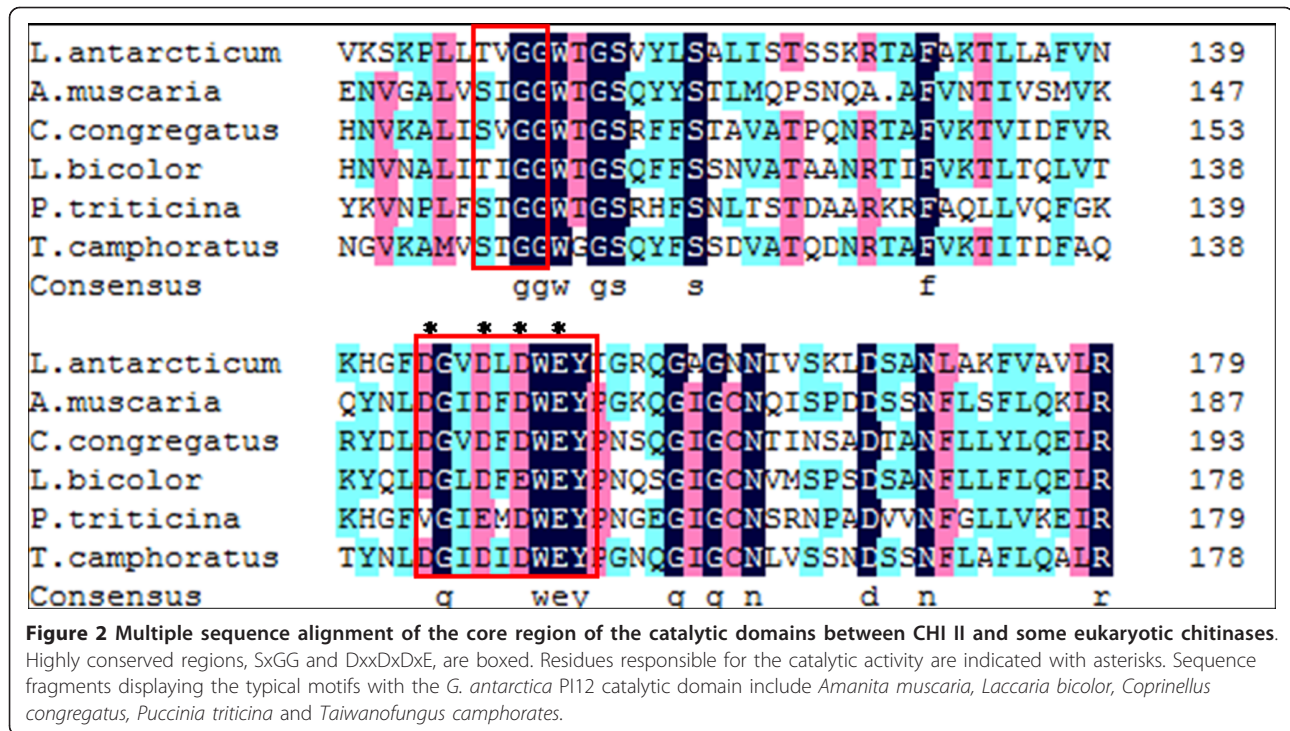
The DNA sequence encodes a 404 amino acid protein with a calculated molecular weight of 42.9 kDa and a theoretical pI of 9.65. Previous studies reported that the chitinases from various organisms had a molecular mass of about 40-80 kDa. The recombinant chitinase from *Clonostachys rosea* had a molecular mass of 43.8 kDa [23], whereas the recombinant chitinase from *Chaetomium cupreum* and *Vibrio* sp. Fi:7 was found to have a molecular mass of 58 kDa [24] and 79.4 kDa [25], respectively. A SignalP [26] prediction revealed that the CHI II protein contains a putative N-terminal signal peptide of 19 amino acids in length with a predicted cleavage site located between A19 and E18 (THA|||EL). This result suggested that this enzyme is secretory in nature. Analysis of the CHI II sequence by NetNGlyc 1.0 Server [27] showed that there is one potential N-linked glycosylation site at position -371. Interproscan [28] analysis predicted that CHI II encodes a glycosyl hydrolase family 18 member because of the amino acid segment "FDGVDLDWE" at nucleotide position 498, which matches the consensus catalytic sequence pattern [LIVMFY]-[DN]-G-[LIVMF]-[DN]-[LIVMF]-[DN]-x-E of chitinases in family 18 glycosyl hydrolases. The CHI II InterPro Accession No. is IPR001223, indicating that it is a novel member of the family 18 glycosyl hydrolases (endochitinase) and belongs to the chitinase class II.

Based on a Blast search analysis, CHI II showed low similarity to all proteins in the database with an identity of 34% to chitinase from *Puccinia triticina* and 33% to endochitinase from *Amanita muscaria*. A low identity of the CHI II sequence with the available sequences in the database suggested that this chitinase from *G. antarctica* PI12 was a newly isolated chitinase sequence from yeast. CHI II appears to be a simple and compact chitinase with an N-terminal sequence encoding for a signal peptide and a C-terminal catalytic domain (CaD).

Interestingly, neither the chitin-binding domain (CBD) nor the Ser/Pro/Thr rich linker, which were often associated with the catalytic domain in family 18 chitinases, was found in CHI II (Figure 1). This finding supports the study by Wang *et al.* [29] that showed that a single CaD is sufficient for the catalytic activity of chitinase and further suggested that the CBD may facilitate hydrolysis of an insoluble substrate [30] but was not required for chitinase activity. Figure 1 shows the domain organisations of family 18 chitinases that demonstrates the similarity of the CHI II domain structure with the chitinase from *Bacillus cereus* (chi36) [29] and the differences from others. It is unclear whether CHI II from *G. antarctica* PI12 evolved from multidomain chitinases as an alternative mechanism to proteolytic cleavage for the acquisition of high efficiency soluble chitinolytic activity.

A multiple sequence alignment of the catalytic domain was conducted using the DNAMAN programme (Figure 2). Five catalytic domains of chitinases from other eukaryotes were chosen and aligned based on their strong identity to the chitinase from *G. antarctica* PI12. This core region contains two conserved amino acid regions, each consisting of SxGG and DxxDxDxE, which are highly conserved among the family 18 chitinases and may constitute the catalytic pocket [15,23]. Importantly, residues that are essential for chitinase activity, particularly Asp144, Asp147, Asp149 and Glu151, were also observed in the CHI II catalytic domain, implying the crucial role of these residues in the catalytic activity and structure of chitinases [31].





Multiple sequence alignment and phylogenetic analysis

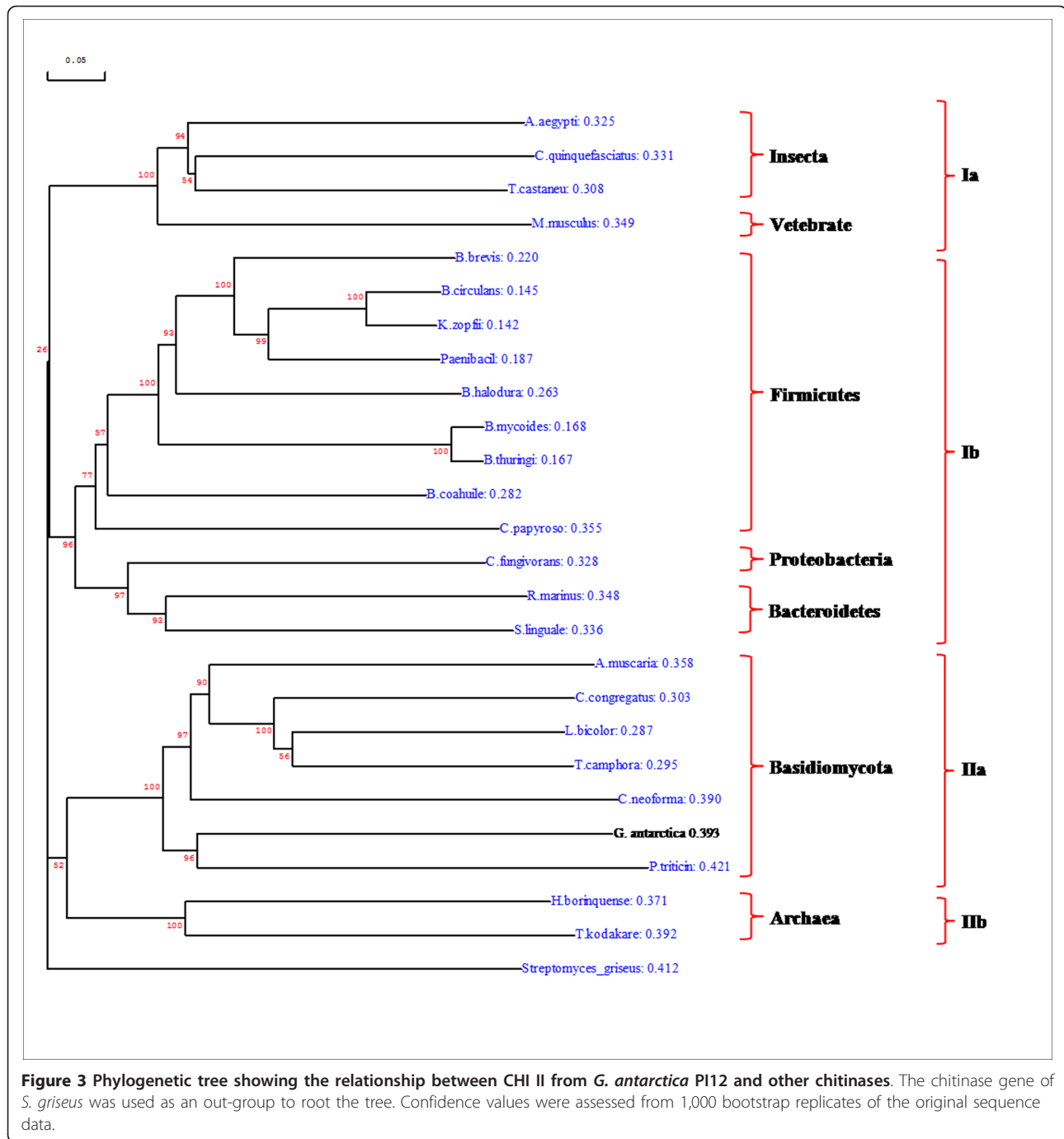
To investigate the evolutionary relationship among the cold-adapted chitinase identified in this work and others reported in the literature, phylogenetic analysis was performed. The search for complete protein sequence was explored using the NCBI BlastP service. A total of 24 chitinase sequences (all hits with an e-value lower than 6×10^{-20}) were downloaded and aligned using clustal X. From this alignment, a NJ tree was constructed to examine the distances among these sequences. An NJ tree was then inferred and the tree topology was analysed using bootstrapping (1000 replicates). The chitinase of *Streptomyces griseus*, which did not coincide with the taxonomic status of the CHI II, was used as an out-group in order to root the tree.

The analysis summarised in Figure 3 shows that the chitinase sequences clustered into two supported subgroups corresponding to clade I and II, which are both monophyletic clades. The monophyletic lineages provided a support for the hypothesis that clade I and II chitinases are likely to have evolved from one common ancestor [32]. Clade I consists of two subclades; chitinases from Vertebrate and Insecta were clustered and formed the subclade Ia, while chitinases from the bacteria domain (Firmicutes, Proteobacteria and Bacteroidetes) were clustered and formed the subclade Ib. Chitinases from Basidiomycota and Archaea were clustered and formed the second monophyletic clade (clade II) that consisted of subclade IIa (Basidiomycota) and subclade

Iib (Archaea). CHI II chitinase from *G. antarctica* P112 was clustered in the Basidiomycota group, which was well supported by bootstrapping (NJ: 100%). Homology values ranging between 21 to 54% were found when comparing CHI II with the other Basidiomycota chitinases. Orikoshi *et al.* [17] found that the redundancy of the chitinase genes within the same species may reflect their functional difference between related proteins and also the adaptive evolution of the chitinases. Bootstrap values, an index of the accuracy of the phylogenetic tree, were found to be higher outside the tree but lower inside the tree, which may indicate the low relative diversity of all the sequences used in the analysis [33].

Heterologous expression of the recombinant CHI II in *P. pastoris*

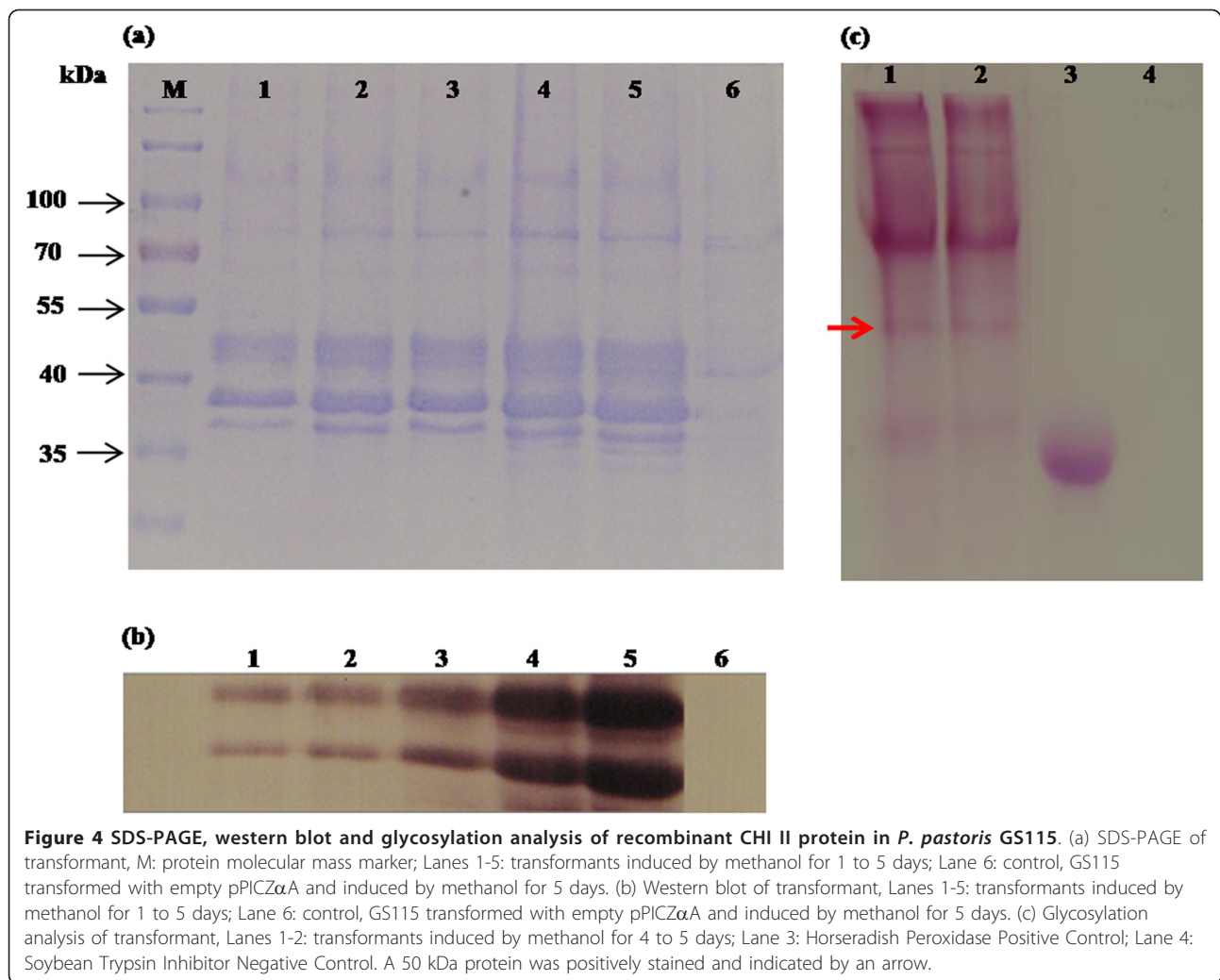
The expression of CHI II was conducted in a *P. pastoris* expression system. Culture condition is one of the critical parameters that significantly affect cell growth and the yield of recombinant product. Stress imposed by cultivation conditions or strategies can lead to a decrease in cell viability, which in turn lowers productivity and induces cell lysis [34]. In this study, the highest extracellular chitinase activity was found to be 1.24 U ml^{-1} at 120 h post-induction when cells were grown in BMMY medium (pH 6.0) at 25°C with 1% (v/v) methanol as inducer. Yield of the recombinant CHI II expressed in *P. pastoris* was shown to be significantly improved at low temperatures. This could be due to the characteristic of psychrophilic



proteins to be stable at low temperatures when compared with other mesophilic chitinases [24,31] expressed in *P. pastoris*. Hong *et al.* [35] reported that high cultivation temperatures can induce the release of proteases from dead cells and may also affect the protein folding process. SDS-PAGE and western blotting analysis of the crude supernatants at the inducible period from 24 to 120 h showed two clearly visible protein bands with a molecular mass of approximately 39 and 50 kDa, respectively

(Figure 4a and 4b). This study shows that *P. pastoris* is the suitable host for the production of cold-adapted protein such as CHI II. Similar finding for the high yield production of recombinant protein in methylotrophic yeast *P. pastoris* was obtained for other cold-adapted chitinase such as in the case of endochitinase from *Sanguibacter antarcticus* [36].

The recombinant chitinase CHI II protein (encoding CHI II mature protein) had an apparent molecular mass



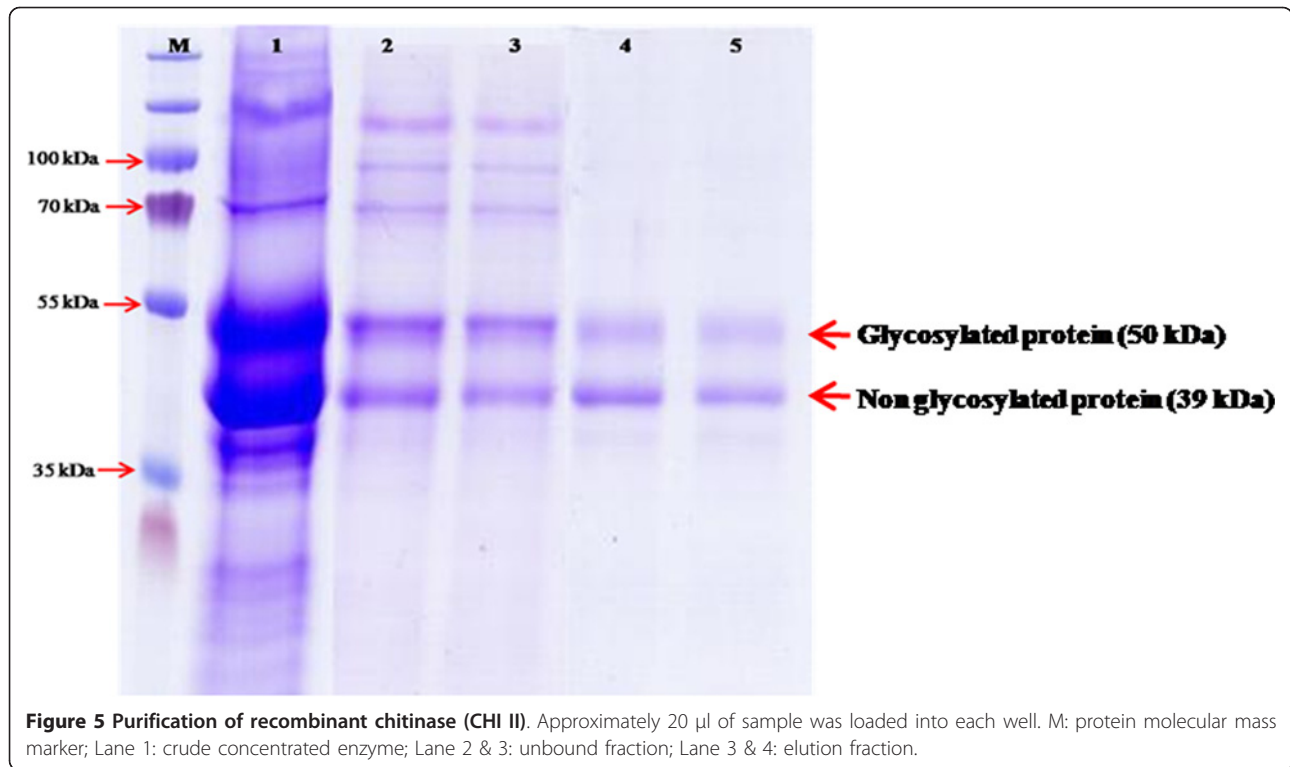
of about 39 kDa, less than the theoretically calculated molecular mass of 40.86 kDa. Another apparent band of about 50 kDa is higher than the calculated molecular mass and was predicted to be post-translationally modified and a glycosylated form of CHI II in *P. pastoris*. A GelCode Glycoprotein Staining kit was used to confirm the glycosylated moiety of the expressed chitinase in the polyacrylamide gel. As presented in Figure 4c, the 50 kDa band was positively stained, appearing as a magenta band with light pink background, whereas the 39 kDa band was not, indicating that the 50 kDa band was glycosylated. One putative N-glycosylation site (Asn-Xaa-Thr/ser) was found in the mature protein when the amino acid sequence were analysed using NetNGlyc 1.0 Server [27], while there was four potential O-glycosylation sites predicted using NetOGlyc 3.0 Server [37]. In eukaryotes, enhanced protein stability is often achieved by glycosylation resulting in protection by the attached sugar moieties. In *P. pastoris*, N-glycosylation is a common post-translational modification that enhances

protein stability. Previous studies of chitinases from *Haemaphysalis longicornis* [38] and *Oryza sativa* L. [39] found larger proteins than the predicted molecular masses, implying that these chitinase proteins underwent post-translational modification.

Enzymatic properties of purified CHI II

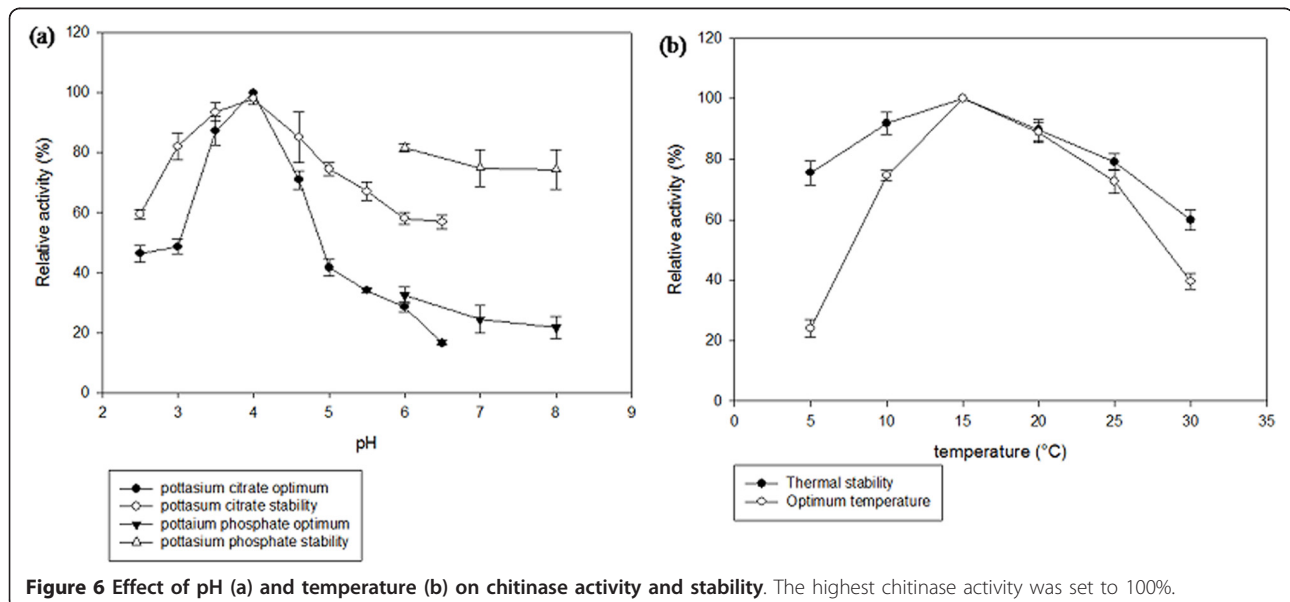
To examine the catalytic properties of CHI II produced by *P. pastoris*, the recombinant enzyme was purified to homogeneity using HisTrap™ HP Columns from GE Healthcare. The purified recombinant chitinase CHI II was resolved as two bands by SDS-PAGE as shown in Figure 5.

To determine the pH and temperature optima of the CHI II, the enzyme's activity was assayed at different pH levels and temperatures. The effect of pH on the chitinolytic activity was studied with a citrate-phosphate buffer (pH 2.5 to 6.5) and a potassium phosphate buffer (pH 6.0 to 8.0). Purified CHI II exhibited enzymatic activity over a pH range of 2.5 to 6.5 (measured at 15°C) and the



activity of the purified chitinase was increased with increasing pH up to pH 4.0 in citrate-phosphate buffer. It was found that the optimal pH was 4.0 with more than 80% of the relative chitinase activity retained at the acidic condition of pH 3.5, as shown in Figure 6a. Alternatively, the optimum pH for chitinases produced by the psychrotolerant bacterium *Vibrio* sp. strain Fi:7 was pH 8.0 [25]

while cold-adapted chitinase (ChiB) from a marine bacterium, *Alteromonas* sp. Strain O-7 is pH 6.0 [17]. At pH 4.5, the enzyme activity began to decline, resulting in a relative chitinase activity below 80%, while at pH 6.5, the relative activity was only about 10%. Even though the chitinase activity declined, purified chitinase was found to be stable. More than 80% of the maximum activity was



retained at pH 3.0 to 3.5, but activity began to be lost after an incubation at a pH over 4.0. Extreme pH levels reduced the enzyme's ability to perform its catalytic activity. Most of the fungal chitinolytic enzymes have an optimum pH between 4.0 and 7.0 [40].

The effects of temperature on the recombinant chitinase's activity and stability were also determined. The optimum temperature for CHI II activity was 15°C (Figure 6b). The thermal stability of chitinase was measured by incubating an aliquot of the enzyme at different temperatures for 30 min and then assaying the residual activity under optimal pH and temperature conditions. Chitinase was stable at 15°C for 30 min and retained more than 90% of its initial activity when incubated at 10°C. Incubation at 20°C resulted in a 20% loss of the residual activity, while more than 70% of the maximal activity was retained when the enzyme was incubated at 5°C and 25°C. Moreover, the residual activity of the enzyme was 50% lower when incubated at 30°C. In general, cold-adapted enzymes display an apparent optimal activity shifted toward low temperatures and also heat lability [17]. It has been proposed that increased flexibility is the most important factor for the catalytic efficiency of cold-adapted enzymes at low temperatures [17], which is achieved through a combination of structural features [16]. Noticeably, the optimum temperature of CHI II (15°C) was much lower than those reported for the chitinase from *Moritella marina* (28°C) [7], cold-adapted chitinase B of *Alteromonas* sp. strain O-7 (30°C) [17] and chitinase A of *Vibrio* sp. strain Fi:7 (30°C) [25], yet the reasons for this finding remain unclear.

The catalytic activity of CHI II was strongly affected by the addition of Ca^{2+} and Fe^{2+} and was moderately inhibited by the other metal ions, such as Na^+ , Zn^{2+} and Cu^{2+} , which is comparable to the endochitinase from *Bacillus cereus* [41] (Figure 7). Chitinases from different fungi exhibit different responses to various metal ions [24]. It was reported that EDTA was an inhibitor of chitinase, e.g., it inhibited the chitinase from *Enterobacter* sp. NRG4 [9]. However, the addition of EDTA did not affect the catalytic activity of CHI II, suggesting that these chitinases may have different catalytic mechanisms. Differing from the *Trichoderma virens* UKM-1 endochitinase [42], which was completely inhibited by Mn^{2+} and Co^{2+} , CHI II was activated by the presence of both Mn^{2+} and Co^{2+} , which enhanced the activity about 10 to 20%. Moreover, K^+ also increased the activity of the recombinant CHI II to about 15%, while the CHI46 chitinase from *Chaetomium globosum* was inhibited by K^+ [31]. These results showed that chitinases could be activated or inhibited by certain metal ions. However, the chitinases from different species may be stimulated or inhibited by different ions.

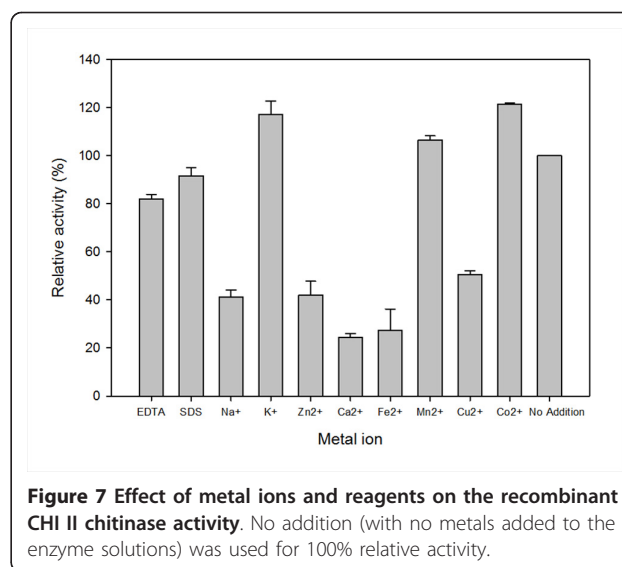


Figure 7 Effect of metal ions and reagents on the recombinant CHI II chitinase activity. No addition (with no metals added to the enzyme solutions) was used for 100% relative activity.

Chitinases from different sources can use a variety of substrates. In this study, CHI II showed the highest activity toward colloidal chitin (0.690 U/ml) followed by swollen chitin (0.570 U/ml), carboxymethyl chitosan (0.465 U/ml), and glycol chitosan (0.278 U/ml). When a native chitinase from *G. antarctica* PI12 were tested against the same substrates, highest activity was exhibited with colloidal chitin (0.424 U/ml), followed by swollen chitin (0.340 U/ml), carboxymethyl chitosan (0.320 U/ml), and glycol chitosan (0.0615 U/ml). These observations show similar activity profile between the recombinant and native chitinase. The preference for hydrolysis of colloidal chitin over other substrates probably reflects that increased accessibility of colloidal chitin to the chitinase active site due to the removal of lipids and proteins from the crab shell chitin after acid hydrolysis treatment [43], while glycol chitosan is chemically different. The higher specificity to the colloidal chitin substrate was similar to that from *Trichoderma virens* [42]. However, its low hydrolytic activity against glycol chitosan was different from a previous study of chitinase from *Schizophyllum commune* [44].

Using the purified enzyme of CHI II, kinetic experiments were performed at a temperature of 15°C by varying the substrate concentration in a standard activity test from 2.0-10.0 mg ml⁻¹. On the basis of the Lineweaver-Burk plot, the values of kinetic constants K_m , V_{max} and subsequently k_{cat} and k_{cat}/K_m of CHI II towards different substrates (colloidal chitin, swollen chitin and carboxymethyl chitosan) were calculated as shown in Table 1. Using colloidal chitin as a substrate, a higher value of V_{max} , which was 3.559 $\mu\text{mol } \mu\text{g}^{-1} \text{ h}^{-1}$, was achieved compared to other substrates. The higher V_{max} value indicates the higher efficiency of the enzyme and

Table 1 Kinetic parameters of CHI II on different chitin substrates

| | V_{max} ($\mu\text{mole } \mu\text{g}^{-1} \text{ h}^{-1}$) | K_m (mg ml^{-1}) | K_{cat} (s^{-1}) | k_{cat}/K_m ($\text{ml mg}^{-1} \text{ s}^{-1}$) |
|------------------------|--|----------------------------------|----------------------------------|---|
| Colloidal chitin | 3.559 | 27.918 | 0.915 | 0.0328 |
| Swollen chitin | 2.695 | 13.83 | 0.693 | 0.0501 |
| Carboxymethyl chitosan | 2.725 | 26.79 | 0.701 | 0.0262 |

suggests that CHI II chitinase has a higher catalytic efficiency towards colloidal chitin as compared to the swollen chitin and carboxymethyl chitosan. The K_m values of CHI II against different substrates were $27.918 \text{ mg ml}^{-1}$, 13.83 mg ml^{-1} and 26.79 mg ml^{-1} , with colloidal chitin, swollen chitin, and carboxymethyl chitosan, respectively, which are comparatively higher than the other reports in literature [45,46]. Stefanidi *et al.* [7] suggested that enzymes produced by marine bacteria work at saturating concentrations of chitin and showed the high values of the K_m constant. On the contrary, some cold-adapted enzymes have a lower K_m than their thermostable homologues. For secreted enzymes from marine microorganisms, the requirement for a low K_m may relate to the need to scavenge substrates that are at low concentrations in the environment [47].

Furthermore, the K_{cat} value of CHI II was also found to be highest with colloidal chitin, which was 0.915 s^{-1} and followed by carboxymethyl chitosan (0.701 s^{-1}) and swollen chitin (0.693 s^{-1}). The results support the V_{max} value that indicated that CHI II had a lower turnover efficiency towards carboxymethyl chitosan and swollen chitin than towards colloidal chitin. However, the specificity constant k_{cat}/K_m is generally a better indication of the catalytic efficiency than k_{cat} alone [48]. Comparable with the K_m value, the k_{cat}/K_m values suggested that CHI II had a higher catalytic efficiency towards swollen chitin than colloidal chitin and carboxymethyl chitosan at low temperatures. A previous study found that a higher K_m and k_{cat} are also characteristics of lactate dehydrogenase (LDH-A4) enzymes from a cold-water fish where a higher K_m results in a decrease in ΔG_{ES} , with a concomitant decrease in the energy of activation required to form the transition state, thereby increasing the k_{cat} [49]. Therefore, the strategy used to maintain sustainable activity at a permanently low temperature is to enhance the k_{cat} and k_{cat}/K_m values instead of decreasing the K_m [50].

Conclusion

In this study, a chitinase from *G. antarctica* PI12 was isolated, purified and characterised. The protein displays an optimum catalytic activity at an apparently low temperature and pH. Due to its high versatility regarding its pH range, temperature range and substrate specificity

towards chitin polymers, the *G. antarctica* PI12 family 18 chitinase seems to be a highly attractive enzyme for the production of chitooligosaccharides, and more generally for biotechnological applications such as for the biocontrol of microbial spoilage of refrigerated foods and use as a mycoparasite of phytopathogenic fungi in cold environments.

Methods

Microorganisms, plasmids, growth media, enzymes and reagents

The psychrophilic yeast, *G. antarctica* PI12 was obtained from School of Biosciences & Biotechnology, Universiti Kebangsaan Malaysia, Malaysia. *Escherichia coli* JM109 (Promega) was used as cloning host. The pPICZ α A vector (Invitrogen), which can propagate in both bacterial and yeast systems, was used for initial cloning in bacteria and subsequent expression in yeast. *P. pastoris* GS115 (Invitrogen) was used for heterologous protein expression. *G. antarctica* PI12 was grown on Yeast extract Peptone Dextrose (YPD) and chitinase induction medium (0.3% (w/v) yeast extract, 0.5% (w/v) peptone, 0.3% (w/v) NaCl and 3% (w/v) colloidal chitin), both containing 25 $\mu\text{g/ml}$ ampicillin and 25 $\mu\text{g/ml}$ kanamycin. The *G. antarctica* PI12 cells were incubated at 4°C for 7 to 8 days. *E. coli* JM109 was grown in Luria Bertani (LB) medium with 100 $\mu\text{g/ml}$ ampicillin as a selectable antibiotic. Media and protocols used for *P. pastoris* are described in the *Pichia* expression manual (Invitrogen). Restriction enzymes were obtained from Promega and New England Biolabs (NEB), while all other chemicals were of analytical grade and were obtained from Sigma, Amresco, Fluka or Merck.

Total RNA isolation and cDNA synthesis of the full-length chitinase gene

Total RNA was extracted from *G. antarctica* PI12 using a method as described by Sokolovsky *et al.* [51]. Briefly, *G. antarctica* PI12 was grown at 4°C for seven days in chitinase induction medium. RNA was purified and used immediately for cDNA synthesis or stored at -80°C. All primers used in PCR amplifications are listed in Table 2. The partial cDNA fragment of *G. antarctica* PI12 chitinase was amplified using primers LChi (F) and LChi (R) and an RT-PCR System (Promega), as recommended by the manufacturer. The primers were designed based on the Genome Sequencing Survey (GSS) Database of *G. antarctica* PI12 available at Malaysia Genome Institute (MGI). The resulting DNA fragment was used as a template for a subsequent RACE amplification to obtain the full-length CHI II sequence. 3' RACE was performed using primer 3-RC and a Cap-Fishing™ full-length cDNA Premix kit (Seegene) while 5' RACE was performed using primer 5-RC and a

Table 2 PCR primers used in this study

| Primer name | Sequence (5'-3') | Orientation | Use |
|-------------|---|-------------|--------------------|
| LChi (F) | GAGAATCGCAACTGACTT | Forward | RT-PCR |
| LChi (R) | GCAGGTGAATTCAGACGG | Reverse | RT-PCR |
| 3-RC | AGGAAACCAGATCGGGATGT ACTGGCC | Forward | RACE amplification |
| 5-RC | GTCGTCGCGCTCCAGGAGCCATAAAT | Reverse | RACE amplification |
| CHI-For | ATGAAGATCCCTCTCCTCTCCTCC | Forward | RT-PCR |
| CHI-Rev | CTACGCCTTGAACGTCCCCGCCAGT | Reverse | RT-PCR |
| CHI-NotI | TTT <u>GCGGCCG</u> CTCACCCCTACCACTCCCTC | Forward | PCR |
| CHI-XbaI | TTTTCTAGAAACGCCTTGAACGTCC CCGCCAGT | Reverse | PCR |

The location of *NotI* and *XbaI* are underlined

SMART™ RACE cDNA Amplification kit (Clontech), as recommended by the manufacturers. Using the sequence information from the RACE result, the full-length gene of chitinase was amplified using primer CHI-Rev and CHI-For via RT-PCR. DNA sequences amplified by PCR were confirmed by nucleotide sequencing (First BASE Laboratories).

Multiple sequence alignment and phylogenetic analysis

The phylogenetic relationship of CHI II was generated with 24 other deduced chitinases available from the NCBI databases as shows in Table 3. A phylogenetic tree was constructed by multiple sequence alignment using clustal X [52] and was generated using the Neighbour-Joining method (NJ) and bootstrap analysis. The phylogenetic tree was visualised using Treeview software. Confidence values for individual branches were assessed from 1000 bootstrap replicates of the original sequence data.

Construction of the chitinase expression plasmid and yeast transformants

The mature CHI II sequence was PCR amplified using primers CHI-*NotI* and CHI-*XbaI* and with the full-length cDNA as a template. The resulting DNA fragment (1100 bp) was digested with *NotI* and *XbaI* before being ligated into the corresponding sites of the pPIC-ZαA vector and termed plasmid CHI II-pPICZαA. The recombinant enzyme was constructed such that the native signal peptide of the *G. antarctica* PI12 chitinase was replaced by the *Saccharomyces cerevisiae* α-factor signal peptide and was cloned in frame with the C-terminal tag. The ligation product was transformed into *E. coli* JM109. The correct sequence of the expression plasmid was confirmed by DNA sequencing.

Transformation of recombinant CHI II into *P. pastoris* GS115 was performed as recommended by the manufacturer (Invitrogen). Briefly, CHI II-pPICZαA was linearised using *PmeI*. The purified DNA product (2-5 μg) was transformed into competent *P. pastoris* GS115 cells via electroporation. Transformants were selected by plating onto YPD agar plates containing 100 μg/ml

zeocin. The methanol metabolism phenotype (Mut⁺) of *P. pastoris* recombinants was analysed by colony PCR using universal primers 5' AOX and 3' AOX. Colonies that produced a 1700 bp (plus the size of the parent plasmid) PCR product were selected and kept for subsequent analysis.

Expression of recombinant CHI II in *P. pastoris* GS115

P. pastoris GS115 transformants were grown in 100 ml of fresh Buffered Complex Medium containing Glycerol termed as BMGY medium (1% (w/v) yeast extract, 2% (w/v) peptone, 100 mM potassium phosphate (pH 6.0), 1.34% YNB, 4 × 10⁻⁵% biotin and 1% (v/v) glycerol) in a 1000 ml baffled flask at 29°C and 250 rpm until the culture reached an A₆₀₀ of 2-6 (approximately 18-20 hours). To induce CHI II production in *P. pastoris*, the cells were harvested and resuspended in Buffered Complex Medium containing Methanol or known as BMMY medium (1% (w/v) yeast extract, 2% (w/v) peptone, 100 mM potassium phosphate (pH 6.0), 1.34% YNB, 4 × 10⁻⁵% biotin and 0.5% (v/v) methanol) using 1/5 of the original culture volume (20 ml). Absolute methanol was added every 24 hours to a final concentration of 1% (v/v) to maintain induction. To analyse expression levels and the optimal time post-induction for harvest, the culture supernatant was collected at 1, 2, 3, 4 and 5 days. Expression of secreted proteins was analysed by SDS-PAGE.

Purification of recombinant chitinase

All purification steps were performed at 4°C. The crude enzyme was concentrated by an Amicon concentrator 10,000 MWCO (MILIPORE) followed by purification using HisTrap™ HP Columns (GE Healthcare). The purified protein was collected and characterised further. The purified proteins were analysed by SDS-PAGE on a 10% gradient gel.

Measurement of enzyme activity and protein determination

Chitinase activity was measured using 3, 5-dinitrosalicylic acid (DNS) as described by Miller *et al.* [53] but

Table 3 Chitinases from different organisms used in the phylogenetic analysis

| Taxonomy | Name/source | Abbreviation | Accession No |
|----------------|------------------------------------|---------------------|--------------|
| Bacteria; | | | |
| Proteobacteria | <i>Collimonas fungivorans</i> | C.fungivorans | ACF93784 |
| Firmicutes | <i>Brevibacillus brevis</i> | B.brevis | YP_002771189 |
| | <i>Paenibacillus</i> sp. | Paenibacil | ZP_04850994 |
| | <i>Bacillus circulans</i> | B.circulans | AAF74782 |
| | <i>Bacillus halodurans</i> | B.halodura | NP_241782 |
| | <i>Kurthia zopfii</i> | Kzopfii | BAA09831 |
| | <i>Clostridium papyrosolvens</i> | C.papyroso | ZP_03226994 |
| | <i>Bacillus coahuilensis</i> | B. coahuile | ZP_03226994 |
| | <i>Bacillus thuringiensis</i> | B. thuringi | ABQ65137 |
| | <i>Bacillus mycoides</i> | B.mycoides | ZP_04167090 |
| Bacteroidetes | <i>Rhodothermus marinus</i> | R.marinus | ZP_04424886 |
| | <i>Spirosoma linguale</i> | S.linguale | ZP_04488661 |
| Archaea; | | | |
| Euryarchaeota | <i>Thermococcus kodakarensis</i> | T.kodakare | YP_184178 |
| | <i>Halogeometricum borinquense</i> | H.borinquense | ZP_04000472 |
| Eukaryota; | | | |
| Metazoa; | | | |
| Arthropoda; | | | |
| Hexapoda; | | | |
| Insecta | <i>Aedes aegypti</i> | A.aegypti | XP_001656054 |
| | <i>Tribolium castaneum</i> | T. castaneu | NP_001038094 |
| | <i>Culex quinquefasciatus</i> | C. quinquefasciatus | XP_001867701 |
| Chordata; | | | |
| Craniata; | | | |
| Vertebrata | <i>Mus musculus</i> | M.musculus | ABK78778 |
| Fungi; | | | |
| Dikarya; | | | |
| Basidiomycota | <i>Amanita muscaria</i> | A.muscaria | CAC35202.1 |
| | <i>Puccinia triticina</i> | P.triticin | AAP42832.1 |
| | <i>Laccaria bicolor</i> | L.bicolor | XP_001886180 |
| | <i>Coprinellus congregatus</i> | C.congregatus | CAQ51152 |
| | <i>Cryptococcus neoformans</i> | C.neoforma | XP_572898 |
| | <i>Taiwanofungus camphoratus</i> | T.camphora | ABB90389 |

with some modifications. The reaction mixture contained 0.25 ml of 10% colloidal chitin in 0.2 M sodium acetate buffer (pH 4.0) and 0.25 ml enzyme solution. After an incubation at 15°C for 1 h, the reaction was terminated by boiling at 100°C for 5 min. The reaction mixture was centrifuged at 8,000 × g for 1 min. Next, 0.75 ml of DNS reagent was added to the aliquots of 0.25 ml reaction mixture that was then boiled at 100°C for 10 min. After cooling, the reducing sugars that were released as a result of the chitinase activity were measured at 540 nm using a UV spectrophotometer. One unit (U) of the chitinase activity is defined as the amount of enzyme that is required to release 1 μmol of N-acetyl-β-D-glucosamine per hour under the assay conditions. Protein content was measured according to the method of Bradford [54] using bovine serum

albumin (BSA) as a protein standard. The reaction was measured at a wavelength of 595 nm.

SDS-PAGE, western blot and glycosylation analysis of chitinase

Sodium dodecyl sulphate-polyacrylamide gel electrophoresis (SDS-PAGE) was conducted to analyse the recombinant protein expression by the method of Laemmli [55] and the gel was then stained with 1% Coomassie Brilliant Blue R-250. Western blotting was performed by colorimetric detection using a His-Tag monoclonal antibody, as recommended by the manufacturer (Novagen). Glycoprotein sugar moieties in the polyacrylamide gel were detected using a GelCode glycoprotein staining kit (Pierce Biotechnology) according to the instructions provided by the manufacturer.

Characterisation of purified CHI II

The optimum pH for the purified CHI II was evaluated at 15°C over a pH range of 2.5 to 8.0, using appropriate buffers (100 mM), citrate-phosphate buffer (pH 2.5 to 6.5) and potassium phosphate buffer (pH 6.0 to 8.0), under CHI II chitinase assay procedures. The pH stability of the enzyme was investigated further at 15°C by pre-incubation of the enzyme solutions in the described buffer systems in the absence of substrate for 30 min. The reaction mixture was then subjected to the CHI II chitinase assay and a pH profile was produced with the enzyme activity at the optimum pH set to 100%.

The optimum temperature for purified CHI II activity was measured by incubating the purified enzyme for 30 min at temperatures ranging from 5°C to 30°C. The thermostability of CHI II was also investigated at temperatures of 5°C to 30°C after incubation of the enzyme solutions in the absence of substrate for 30 min. A temperature profile was produced with the enzyme activity at the optimum temperature set to 100%.

Metal ions are generally considered to be important factors affecting microbial enzyme activity. The reaction mixture consisted of purified enzyme in 100 mM citrate buffer (pH 4.0) containing 1 mM metal ions (K^+ , Cu^{2+} , Mn^{2+} , Fe^{2+} , Co^{2+} , Ca^{2+} , Na^+ and Zn^{2+}) and different reagents (such as 1 mM EDTA and 1% SDS). The effect of these metal ions was investigated using the CHI II chitinase assay system. The system without any additives was used as a control.

Substrate specificity and kinetic parameters

The substrate specificity of CHI II was determined by measuring the enzyme activity after incubation in 100 mM citrate buffer containing 1% of each substrate (colloidal chitin, swollen chitin, glycol chitosan and carboxymethyl chitosan) at pH 4.0 and 15°C for 1 h. The amount of reducing sugars produced was estimated by using the DNS method as described above. The kinetic parameters (K_m , V_{max} , k_{cat} , and k_{cat}/K_m) of the purified enzyme were studied. Different substrate (colloidal chitin, swollen chitin and carboxymethyl chitosan) concentrations were used, ranging from 2.0 to 10.0 mg ml⁻¹. The reaction rate versus substrate concentration was plotted to determine whether the enzyme obeys Michaelis-Menten kinetics. The Michaelis-Menten constant (K_m) and maximum velocity of substrate hydrolysis (V_{max}) were determined from the Lineweaver-Burk plots.

Acknowledgements

This work was supported by a research grant from the Molecular Biology & Genomic Initiative Program, Malaysia Genome Institute (Project No. 07-05-16-MGI-GMB02).

Author details

¹Department of Bioprocess Engineering, Faculty of Chemical Engineering, Universiti Teknologi Malaysia, 81310 Skudai, Johor, Malaysia. ²Malaysia Genome Institute (MGI), Jalan Bangi Lama, 43000 Kajang, Selangor, Malaysia. ³School of Biosciences and Biotechnology, Faculty of Science and Technology, Universiti Kebangsaan Malaysia, 43600 Bangi, Selangor, Malaysia.

Authors' contributions

NMM, RMI developed the concept and design the study. ANMR performed experiments and wrote the manuscript. AR, AMAM, FDAB, RMI edited the manuscript. RMI gave technical support and conceptual advice. All authors have approved the final article to be submitted as manuscript.

Competing interests

The authors declare that they have no competing interests.

Received: 19 July 2011 Accepted: 4 November 2011

Published: 4 November 2011

References

1. Bae E, Phillips GN: Structures and Analysis of Highly Homologous Psychrophilic, Mesophilic, and Thermophilic Adenylate Kinases. *Journal of Biological Chemistry* 2004, **279**:28202-28208.
2. Cavicchioli R, Siddiqui KS, Andrews D, Sowers KR: Low-temperature extremophiles and their applications. *Current Opinion in Biotechnology* 2002, **13**:253-261.
3. Collins T, Meuwis M-A, Gerday C, Feller G: Activity, Stability and Flexibility in Glycosidases Adapted to Extreme Thermal Environments. *Journal of Molecular Biology* 2003, **328**:419-428.
4. Joseph B, Ramteke PW, Thomas G: Cold active microbial lipases: Some hot issues and recent developments. *Biotechnology Advances* 2008, **26**:457-470.
5. Feller G, Lonhienne T, Deroanne C, Libioulle C, Van Beeumen J, Gerday C: Purification, characterization, and nucleotide sequence of the thermolabile alpha-amylase from the antarctic psychrotroph *Alteromonas haloplanctis* A23. *Journal of Biological Chemistry* 1992, **267**:5217-5221.
6. Lonhienne T, Mavromatis K, Vorgias CE, Buchon L, Gerday C, Bouriotis V: Cloning, Sequences, and Characterization of Two Chitinase Genes from the Antarctic *Arthrobacter* sp. Strain TAD20: Isolation and Partial Characterization of the Enzymes. *The Journal of Bacteriology* 2001, **183**:1773-1779.
7. Stefanidi E, Vorgias C: Molecular analysis of the gene encoding a new chitinase from the marine psychrophilic bacterium *Moritella marina* and biochemical characterization of the recombinant enzyme. *Extremophiles* 2008, **12**:541-552.
8. Kubicek CP, Mach RL, Peterbauer CK, Lorito M: *Trichoderma*: From genes to biocontrol. *Journal of Plant Pathology* 2001, **83**:11-23.
9. Dahiya N, Tewari R, Tiwari RP, Hoondal GS: Chitinase from *Enterobacter* sp. NRG4: Its purification, characterization and reaction pattern. *Electronic Journal of Biotechnology* 2005, **8**:134-145.
10. Gooday GW: Physiology of microbial degradation of chitin and chitosan. *Biodegradation* 1990, **1**:177-190.
11. Patil RS, Ghormade V, Deshpande MV: Chitinolytic enzymes: an exploration. *Enzyme and Microbial Technology* 2000, **26**:473-483.
12. Dahiya N, Tewari R, Hoondal G: Biotechnological aspects of chitinolytic enzymes: a review. *Applied Microbiology and Biotechnology* 2006, **71**:773-782.
13. Xiao X, Yin X, Lin J, Sun L, You Z, Wang P, Wang F: Chitinase genes in lake sediments of Ardley Island, Antarctica. *Applied and Environmental Microbiology* 2005, **71**:7904-7909.
14. McCreath KJ, Specht CA, Robbins PW: Molecular cloning and characterization of chitinase genes from *Candida albicans*. *Proceedings of the National Academy of Sciences of the United States of America* 1995, **92**:2544-2548.
15. Henrissat B, Bairoch A: New families in the classification of glycosyl hydrolases based on amino acid sequence similarities. *Biochemical Journal* 1993, **293**:781-788.
16. Tronelli D, Maugini E, Bossa F, Pascarella S: Structural adaptation to low temperatures - analysis of the subunit interface of oligomeric psychrophilic enzymes. *FEBS Journal* 2007, **274**:4595-4608.

17. Orikoshi H, Baba N, Nakayama S, Kashu H, Miyamoto K, Yasuda M, Inamori Y, Tsujibo H: **Molecular analysis of the gene encoding a novel cold-adapted chitinase (ChiB) from a marine bacterium, *Alteromonas* sp. Strain O-7.** *The Journal of Bacteriology* 2003, **185**:1153-1160.
18. Nakamura T, Ishikawa M, Nakatani H, Oda A: **Characterization of cold-responsive extracellular chitinase in bromegrass cell cultures and its relationship to antifreeze activity.** *Plant Physiology* 2008, **147**:391-401.
19. Fenice M, Selbmann L, Di Giambattista R, Federici F: **Chitinolytic activity at low temperature of an Antarctic strain (A3) of *Verticillium lecanii*.** *Research in Microbiology* 1998, **149**:289-300.
20. Papa R, Rippa V, Sannia G, Marino G, Duilio A: **Recombinant protein expression system in cold loving microorganisms.** *Microbial Cell Factories* 2006, **5**:1-2.
21. Feller G, Thiry M, Arpigny JL, Gerday C: **Cloning and expression in *Escherichia coli* of three lipase-encoding genes from the psychrotrophic antarctic strain *Moraxella* TA144.** *Gene* 1991, **102**:111-115.
22. Jahic M, Wallberg F, Bollok M, Garcia P, Enfors S-O: **Temperature limited fed-batch technique for control of proteolysis in *Pichia pastoris* bioreactor cultures.** *Microbial Cell Factories* 2003, **2**:6.
23. Gan Z, Yang J, Tao N, Yu Z, Zhang K-Q: **Cloning and expression analysis of a chitinase gene *Crchi1* from the mycoparasite fungus *Clonostachys rosea* (syn. *Gliocladium roseum*).** *The Journal of Microbiology* 2007, **45**:422-430.
24. Wang Y-J, Yang Q: **Cloning and Expression of a Novel Chitinase *chi58* from *Chaetomium cupreum* in *Pichia pastoris*.** *Biochemical Genetics* 2009, **47**:547-558.
25. Bendt A, Hüller H, Kammel U, Helmke E, Schweder T: **Cloning, expression, and characterization of a chitinase gene from the Antarctic psychrotolerant bacterium *Vibrio* sp. strain Fi:7.** *Extremophiles* 2001, **5**:119-126.
26. Dyrlov Bendtsen J, Nielsen H, von Heijne G, Brunak S: **Improved Prediction of Signal Peptides: SignalP 3.0.** *Journal of Molecular Biology* 2004, **340**:783-795.
27. Gupta R, Brunak S: **Prediction of glycosylation across the human proteome and the correlation to protein function.** *Pacific Symposium on Biocomputing* 2002, **310**:322.
28. Hunter S, Apweiler R, Attwood TK, Bairoch A, Bateman A, Binns D, Bork P, Das U, Daugherty L, Duquenne L, et al: **InterPro: the integrative protein signature database.** *Nucleic Acids Research* 2009, **37**:D211-D215.
29. Wang S-Y, Wu S-J, Thottappilly G, Locy RD, Singh NK: **Molecular cloning and structural analysis of the gene encoding *Bacillus cereus* exochitinase Chi36.** *Journal of Bioscience and Bioengineering* 2001, **92**:59-66.
30. Limón MC, Chacón MR, Mejías R, Delgado-Jarana J, Rincón AM, Codón AC, Benítez T: **Increased antifungal and chitinase specific activities of *Trichoderma harzianum* CECT 2413 by addition of a cellulose binding domain.** *Applied Microbiology and Biotechnology* 2004, **64**:675-685.
31. Liu ZH, Yang Q, Hu S, Zhang JD, Ma J: **Cloning and characterization of a novel chitinase gene (*chi46*) from *Chaetomium globosum* and identification of its biological activity.** *Applied Microbiology and Biotechnology* 2008, **80**:241-252.
32. Gan Z, Yang J, Tao N, Liang L, Mi Q, Li J, Zhang K-Q: **Cloning of the gene *Lecanicillium psalliotae* chitinase *Lpch1* and identification of its potential role in the biocontrol of root-knot nematode *Meloidogyne incognita*.** *Applied Microbiology and Biotechnology* 2007, **76**:1309-1317.
33. Kawase T, Saito A, Sato T, Kanai R, Fujii T, Nikaidou N, Miyashita K, Watanabe T: **Distribution and phylogenetic analysis of family 19 chitinases in *Actinobacteria*.** *Appl Environ Microbiol* 2004, **70**:1135-1144.
34. Mattanovich D, Gasser B, Hohenblum H, Sauer M: **Stress in recombinant protein producing yeasts.** *Journal of Biotechnology* 2004, **113**:121-135.
35. Hong F, Meinander NQ, Jönsson LJ: **Fermentation strategies for improved heterologous expression of laccase in *Pichia pastoris*.** *Biotechnology and Bioengineering* 2002, **79**:438-449.
36. Lee SG, Koh HY, Han SJ, Park H, Na DC, Kim I-C, Lee HK, Yim JH: **Expression of recombinant endochitinase from the Antarctic bacterium, *Sanguibacter antarcticus* KOPRI 21702 in *Pichia pastoris* by codon optimization.** *Protein Expression and Purification* 2010, **71**:108-114.
37. Julenius K, MÅ, Igaard A, Gupta R, Brunak S: **Prediction, conservation analysis, and structural characterization of mammalian mucin-type O-glycosylation sites.** *Glycobiology* 2005, **15**:153-164.
38. You M, Xuan X, Tsuji N, Kamio T, Taylor D, Suzuki N, Fujisaki K: **Identification and molecular characterization of a chitinase from the hard tick *Haemaphysalis longicornis*.** *Journal of Biological Chemistry* 2003, **278**:8556-8563.
39. Park S-M, Kim D-H, Truong NH, Itoh Y: **Heterologous expression and characterization of class III chitinases from rice (*Oryza sativa* L.).** *Enzyme and Microbial Technology* 2002, **30**:697-702.
40. El-Katratny MH, Gudelj M, Robra KH, Elnaghy MA, Gubitz GM: **Characterization of a chitinase and an endo-beta-1,3-glucanase from *Trichoderma harzianum* Rifai T24 involved in control of the phytopathogen *Sclerotium rolfsii*.** *Applied Microbiology and Biotechnology* 2001, **56**:137-143.
41. Chen WM, Chen GH, Chen CS, Jiang ST: **Cloning, expression and purification of *Bacillus cereus* endochitinase in the *Escherichia coli* AD494 (DE3)pLysS Expression System.** *Bioscience, Biotechnology and Biochemistry* 2009, **73**:1172-1174.
42. Alias N, Mahadi N, Murad A, Bakar F, Mahmood N, Illias R: **Expression and characterization of *Trichoderma virens* UKM-1 endochitinase in *Escherichia coli*.** *World Journal of Microbiology and Biotechnology* 2009, **25**:561-572.
43. Sandhya C, Adapa LK, Nampoothiri KM, Binod P, Szakacs G, Pandey A: **Extracellular chitinase production by *Trichoderma harzianum* in submerged fermentation.** *Journal of Basic Microbiology* 2004, **44**:49-58.
44. Yano S, Rattanakit N, Wakayama M, Tachiki T: **A chitinase indispensable for formation of protoplast of *Schizophyllum commune* in basidiomycetelytic enzyme preparation produced by *Bacillus circulans* KA-304.** *Bioscience, Biotechnology and Biochemistry* 2004, **68**:1299-1305.
45. Bhushan B, Hoondal GS: **Isolation, purification and properties of a thermostable chitinase from an alkalophilic *Bacillus* sp. BG-11.** *Biotechnology Letters* 1998, **20**:157-159.
46. Woo C-J, Park H-D: **An extracellular *Bacillus* sp. chitinase for the production of chitotriose as a major chitinolytic product.** *Biotechnology Letters* 2003, **25**:409-412.
47. Siddiqui KS, Cavicchioli R: **Cold-adapted enzymes.** *Annual Review of Biochemistry* 2006, **75**:403-433.
48. Feller G: **Molecular adaptations to cold in psychrophilic enzymes.** *Cellular and Molecular Life Sciences* 2003, **60**:648-662.
49. Fields PA, Somero GN: **Hot spots in cold adaptation: Localized increases in conformational flexibility in lactate dehydrogenase A4 orthologs of Antarctic notothenioid fishes.** *Proceedings of the National Academy of Sciences* 1998, **95**:11476-11481.
50. D'Amico S, Gerday C, Feller G: **Structural determinants of cold adaptation and stability in a psychrophilic α -amylase.** *Biologia (Bratislava)* 2002, **57**:213-219.
51. Sokolovsky VY, Kaldenhoff R, Ricci M, Russo VEA: **Fast and reliable mini-prep RNA extraction from *Neurospora crassa*.** *Fungal Genetics Newsletters* 1990, **37**:39-40.
52. Thompson JD, Gibson TJ, Higgins DG: **Multiple Sequence Alignment Using ClustalW and ClustalX.** *Current Protocols in Bioinformatics* John Wiley & Sons, Inc; 2002.
53. Miller GL: **Use of dinitrosalicylic acid reagent for determination of reducing sugar.** *Analytical Chemistry* 1959, **31**:426-428.
54. Bradford MM: **A rapid and sensitive method for the quantitation of microgram quantities of protein utilizing the principle of protein-dye binding.** *Analytical Biochemistry* 1976, **72**:248-254.
55. Laemmli UK: **Cleavage of structural proteins during the assembly of the head of bacteriophage T4.** *Nature* 1970, **227**:680-685.
56. Kuranda MJ, Robbins PW: **Chitinase is required for cell separation during growth of *Saccharomyces cerevisiae*.** *Journal of Biological Chemistry* 1991, **266**:19758-19767.
57. Fitches E, Wilkinson H, Bell H, Bown DP, Gatehouse JA, Edwards JP: **Cloning, expression and functional characterisation of chitinase from larvae of tomato moth (*Lacanobia oleracea*): a demonstration of the insecticidal activity of insect chitinase.** *Insect Biochemistry and Molecular Biology* 2004, **34**:1037-1050.
58. Watanabe T, Oyanagi W, Suzuki K, Ohnishi K, Tanaka H: **Structure of the gene encoding chitinase D of *Bacillus circulans* WL-12 and possible homology of the enzyme to other prokaryotic chitinases and class III plant chitinases.** *J Bacteriol* 1992, **174**:408-414.

doi:10.1186/1475-2859-10-94

Cite this article as: Ramli et al.: Molecular cloning, expression and biochemical characterisation of a cold-adapted novel recombinant chitinase from *Glaciozyma antarctica* P112. *Microbial Cell Factories* 2011 **10**:94.