


Spatial codistribution of HIV, tuberculosis and malaria in Ethiopia

Kefyalew Addis Alene,^{1,2} Ahmed Elagali,¹ Dylan D Barth,^{3,4} Susan F Rumisha,^{1,5} Punam Amratia,¹ Daniel J Weiss,^{1,2} Kendalem Asmare Ataell,⁶ Andargachew Kumsa Erena ,⁷ Peter W Gething,^{1,2} Archie C A Clements²

To cite: Alene KA, Elagali A, Barth DD, *et al*. Spatial codistribution of HIV, tuberculosis and malaria in Ethiopia. *BMJ Global Health* 2022;**7**:e007599. doi:10.1136/bmjgh-2021-007599

Handling editor Seye Abimbola

► Additional supplemental material is published online only. To view, please visit the journal online (<http://dx.doi.org/10.1136/bmjgh-2021-007599>).

Received 3 October 2021
Accepted 20 January 2022

ABSTRACT

Background HIV, tuberculosis (TB) and malaria are the three most important infectious diseases in Ethiopia, and sub-Saharan Africa. Understanding the spatial codistribution of these diseases is critical for designing geographically targeted and integrated disease control programmes. This study investigated the spatial overlap and drivers of HIV, TB and malaria prevalence in Ethiopia. **Methods** HIV, TB and malaria data were obtained from different nationwide prevalence surveys, and geospatial covariates were obtained from publicly available sources. A Bayesian model-based geostatistical framework was applied to each survey leveraging the strength of high-resolution spatial covariates to predict continuous disease-specific prevalence surfaces and their codistribution. **Results** The national prevalence was 1.54% (95% CI 1.40 to 1.70) for HIV, 0.39% (95% CI 0.34 to 0.45) for TB and 1.1% (95%CI 0.95 to 1.32) for malaria. Substantial subnational variation was predicted with the highest HIV prevalence estimated in Gambela (4.52%), Addis Ababa (3.52%) and Dire Dawa (2.67%) regions. TB prevalence was highest in Dire Dawa (0.96%) and Gambela (0.88%), while malaria was highest in Gambela (6.1%) and Benishangul-Gumuz (3.8%). Spatial overlap of their prevalence was observed in some parts of the country, mainly Gambela region. Spatial distribution of the diseases was significantly associated with healthcare access, demographic, and climatic factors. **Conclusions** The national distribution of HIV, TB and malaria was highly focal in Ethiopia, with substantial variation at subnational and local levels. Spatial distribution of the diseases was significantly associated with healthcare access, demographic and climatic factors. Spatial overlap of HIV, TB and malaria prevalence was observed in some parts of the country. Integrated control programmes for these diseases should be targeted to these areas with high levels of co-endemicity.

Conclusions The national distribution of HIV, TB and malaria was highly focal in Ethiopia, with substantial variation at subnational and local levels. Spatial distribution of the diseases was significantly associated with healthcare access, demographic and climatic factors. Spatial overlap of HIV, TB and malaria prevalence was observed in some parts of the country. Integrated control programmes for these diseases should be targeted to these areas with high levels of co-endemicity.

BACKGROUND

Infectious diseases are significant contributors to the global burden of death and disability.¹ HIV, tuberculosis (TB) and malaria are the three most serious infectious diseases in the world, causing high morbidity and mortality rates especially in low-income and middle-income countries.² The Sustainable

WHAT IS ALREADY KNOWN?

- ⇒ HIV, tuberculosis (TB) and malaria are the three most important infectious diseases in Ethiopia.
- ⇒ The synergy between HIV, TB and malaria infection is strong at an individual level.

WHAT ARE THE NEW FINDINGS?

- ⇒ The distribution of HIV, TB and malaria was highly focal in Ethiopia, with substantial variation at subnational and local levels.
- ⇒ Spatial overlap of high HIV, TB and malaria prevalence was observed in some parts of the country.
- ⇒ The spatial distribution of the diseases was associated with healthcare access, demographic and climatic factors.

WHAT DO THE NEW FINDINGS IMPLY?

- ⇒ Multi-disease control approaches should be emphasised to curb the coexisting three infections, however, relevant interventions should be implemented in areas with lower prevalences.
- ⇒ Improving healthcare access can reduce the burden of HIV, TB and malaria in Ethiopia.
- ⇒ Geographically targeted service integration may enhance the efficiency and cost-effectiveness of disease control programmes.

Development Goals (SDGs) aim to end malaria, TB and HIV as a public health threat by 2030.³ Understanding the spatial distribution of these diseases is essential to inform control and prevention strategies. Although there has been a significant reduction in the global burden of these diseases in the past few decades, they all remain in the top 10 causes of mortality in low-income and middle-income countries.¹ According to 2020 WHO reports, there was a total of 277 million cases of HIV, TB and malaria and 2.5 million deaths associated with these three diseases globally.⁴ The African continent accounts for a disproportionately high global burden of HIV (73%), TB (25%) and malaria (94%).⁴ While there is considerable geographical overlap in the distribution of these three diseases at regional levels, the codistribution of these



© Author(s) (or their employer(s)) 2022. Re-use permitted under CC BY. Published by BMJ.

For numbered affiliations see end of article.

Correspondence to

Dr Kefyalew Addis Alene;
KEFYALEW.ALENE@curtin.edu.au

diseases is yet to be investigated subnationally in high-burden countries.

The synergy between HIV, TB and malaria infection is strong at an individual level. While TB is the most common opportunistic infection leading to death among people living with HIV,⁵ HIV infection is the most important risk factor for developing active TB.⁶ Studies have also reported that HIV-infected individuals are at increased risk of complicated and severe malaria and death.^{7,8} Malaria and TB are strongly influenced by socio-economic factors such as housing quality and sanitation.⁹ Previous research has studied the interactions between HIV and TB or malaria,^{9,10} but limited research has investigated the codistribution of all three diseases.

An understanding of the spatial codistribution of these diseases is critical to designing targeted and integrated interventions for surveillance, diagnosis, treatment and prevention that will help achieve the goals of national disease control programmes. Integrated disease control programmes can present cost-effective benefits and synergistic effects compared with vertical programmes.^{11,12} However, accurate knowledge of where to strengthen integrated programmes is key to achieving maximum impact, especially in low-income countries like Ethiopia.

Ethiopia is one of the countries highly affected by HIV, TB and malaria. There are several studies investigating the spatial distribution of HIV, TB and malaria in Ethiopia, which have confirmed the presence of spatial clustering associated with common risk factors such as behavioural, climatic and clinical factors.^{13–15} To the best of our knowledge, this is the first study to combine all three diseases simultaneously to investigate their spatial codistribution. The aim of this study was to develop predictive maps for each of the three diseases, investigate their spatial codistribution, and identify the demographic and climatic factors that influence their distribution in Ethiopia.

METHODS

Country context

Ethiopia is the second-most populous country in Africa, with an estimated population size of more than 115 million people in 2020.¹⁶ There are marked differences in population structure, socioeconomic conditions, disease burden and climatic conditions across the country. Ethiopia has a surface area of approximately 1.1 million km² and a population density of 215 people per square kilometre.¹⁶ It has a variety of geographical features with altitudes ranging from 125 m below sea level to 4620 m above sea level. Ethiopia is administratively divided into ten regional states and two administrative cities (first-level), which are further divided into zones (second-level), districts (third-level), and villages (fourth-level).

In Ethiopia, infectious diseases such as HIV, TB and malaria are the leading causes of morbidity and mortality.¹⁷ In 2019, it was estimated that there

were ~15 000 deaths caused by HIV/AIDS, ~21 000 deaths caused by TB and ~5000 deaths caused by malaria, giving >40 000 deaths caused by the Big Three infectious diseases in Ethiopia.^{4,18,19}

The healthcare system of the country contains a mixture of public, private and non-governmental sectors. The public healthcare system is structured into a three-tier system: (1) primary care: composed of health posts, health centres and primary hospitals; (2) secondary care: composed of general hospitals and (3) tertiary care: composed of specialised hospitals.²⁰ It is estimated that more than half of the population lives more than 10 km from the nearest health facility, concentrated in regions with poor transport infrastructure.²¹

Data sources

Data for the primary outcome measures (ie, HIV, TB and malaria prevalence) and exposure variables (ie, climatic variables and population density) were assembled from multiple sources.

HIV prevalence data were obtained from the Ethiopian Demographic and Health Survey (EDHS 2016). The EDHS survey was conducted between January and June 2016 to provide estimates of HIV prevalence based on a nationally representative sample. A finger-prick blood specimen collected from both women and men aged 15–49 years, was tested using an ELISA. All samples testing positive on the first test were subjected to a second test. If the results of the first and second tests were discordant, a third confirmatory assay was used.

TB prevalence data were obtained from the Ethiopian national TB prevalence survey. A detailed description of the survey is provided elsewhere.²² Briefly, it was the first nationally representative TB survey conducted in Ethiopia. The survey was conducted between 2010 and 2011, with 85 clusters included in the survey, including 14 clusters in urban areas, 63 clusters in rural areas and 8 clusters in pastoralist areas. Symptom screening, chest X-ray, sputum smear microscopy and TB culture were reported among 46 697 adults and adolescents aged 15 years and above.²³

Malaria prevalence data were obtained from the Ethiopia national malaria indicator survey, a nationally representative household malaria survey collected between September and December 2015.²⁴ Malaria parasite testing was done using multi-species CareStart rapid diagnostic tests and microscopic examination of both thick and thin smear blood slides.²⁴ Microscopy slide testing was used for the determination of the prevalence of malaria. The surveys were aggregated to cluster level and malaria prevalence at each cluster was calculated from the number of people who received a diagnostic test and the number of people who tested positive.

Potential covariates were selected based on the availability of country-wide representative data at a high level of resolution and based on biological plausibility and social pathways affecting disease risk and based on them having been previously found to explain spatial variation in risk.

Climatic variables such as mean annual temperature and mean annual precipitation were obtained from the WorldClim website.²⁵ Altitude data were obtained from the Shuttle Radar Topography Mission.²⁶ Data on travel time to the nearest city and travel times to the nearest healthcare facility in minutes (ie, hospital or clinic) were obtained from the Malaria Atlas Project.²⁷ Population density, estimated as the number of people per grid cell, was obtained from WorldPop.²⁸ Distance to the nearest water body was obtained from previous studies.^{29 30} All these data were extracted at a spatial resolution of 1 km². The data sources of the covariates with their definitions are provided in online supplemental table S1. A polygon shapefile for the Ethiopian administrative boundaries was obtained from the Database for Global Administrative Areas, a free online database.³¹ The dependant variables (HIV, TB and malaria prevalence) were geo-referenced, and covariates were linked to disease prevalence data by extracting their value in the 1 km² grid cell in which each disease prevalence observation was located using ArcGIS (ESRI, Redlands, California, USA) geographical information system (GIS) software.

Spatial analysis

Bayesian model-based geostatistics (MBG) was used to generate spatially continuous estimates of the national prevalence of HIV, TB and malaria mapped at a resolution of 1 km². Within the MBG framework, a logistic regression model was fitted to the prevalence data using both fixed effects and spatial random effects. Three different models were constructed independently for the prevalence of HIV, TB and malaria. Here, we present how the model for the prevalence of TB was constructed, but the approach was identical for the other diseases. A spatial binomial regression model was fitted for TB prevalence survey data, including fixed effects for mean annual temperature, mean annual precipitation, altitude, travel time to the nearest city, distance to a water body, population density and geostatistical random effects.³² The proportion of TB cases at each surveyed location j as the outcome variable was assumed to follow a binomial distribution:

$$Y_j \sim \text{Binomial}(n_j, p_j)$$

where Y_j is the observed number tested positive for TB, n_j is the total number of individuals tested for TB and p_j is the predicted TB prevalence at location j ($j=1, \dots, 85$). Mean predicted TB prevalence was modelled via a logit link function with a linear predictor, defined as:

$$\text{logit}(p_j) = \alpha + \sum_{z=1}^Z \beta_z X_{z,j} + \zeta_j$$

where α is the intercept, β is a matrix of covariate coefficients, X is a design matrix of z covariates and ζ_j are spatial random effects modelled using a zero-mean Gaussian Markov random field with a Matérn covariance function. The covariance function was defined by two parameters: the spatial scale ρ , which represents the distance beyond which correlation becomes negligible, and σ , which is the marginal SD.^{33 34} Non-informative priors were used

for α (uniform prior with bounds $-\infty$ and ∞) and we set normal priors with mean=0 and precision (the inverse of variance)= 1×10^{-4} for each β . We used default priors for the parameters of the spatial random field.³⁵ Parameter estimation was done using the Integrated Nested Laplace Approximation (INLA) approach in the R statistical software (R-INLA).^{33 34} Sufficient values (ie, 150 000 samples) from each simulation run for the variables of interest were stored to ensure full characterisation of the posterior distributions.

Predictions of the prevalence of each infection at unsampled locations were made at 1 km² resolution by interpolating the spatial random effects and adding them to the sum of the products of the coefficients for the spatially variant fixed effects at each prediction location.³⁶ The intercept was added, and the overall sum was back-transformed from the logit scale to the prevalence scale, providing prediction surfaces that show the estimated prevalence of disease for all prediction locations. An area of coinfection is defined as a geographical area with disease prevalences higher than the upper quartile of 75%. To obtain a co-endemicity map, the spatial predicted prevalence surface for each disease were overlaid in the GIS software. This process allows for the identification of overlapped areas where the prevalence of two or three diseases are highest. This approach has been applied in various studies addressing similar objectives.^{37 38}

Model validation

Models were validated using the conditional predictive ordinates (CPO) and the probability integral transform (PIT) statistics.^{39 40} Both CPO and PIT were obtained as 'leave-one-out' cross-validation in INLA. These were defined as follows: CPO _{i} = $\pi\left(\frac{y_i}{y-i}\right)$

$$\text{PIT}_i = \pi(y_i^{\text{new}} - (y_i/y - i))$$

The CPO expresses the posterior probability of observing the value of the outcome at location i when the model is fitted to all data except the y_i . Large values indicate a better fit and small values indicate a poorer fit of the model to that observation and, perhaps, that it is an outlier. PIT measures the probability of a new value y_i^{new} to be lower than the actual observed value. For a well-calibrated model, the PIT values should be uniformly distributed. Larger values of CPO and PIT imply a better fit. Models with different combinations of covariates were constructed and compared. The Watanabe-Akaike Applicable Information Criterion (WAIC) statistic was used to select the best-fitting model.

RESULTS

Data were available from 643 georeferenced locations for HIV, 85 for TB, and 643 for malaria. The survey locations covered all regions of the country (figure 1).

Prevalence of HIV, TB and malaria at national and regional levels

Table 1 shows the national and regional prevalence of HIV, TB and malaria in Ethiopia. The national prevalence

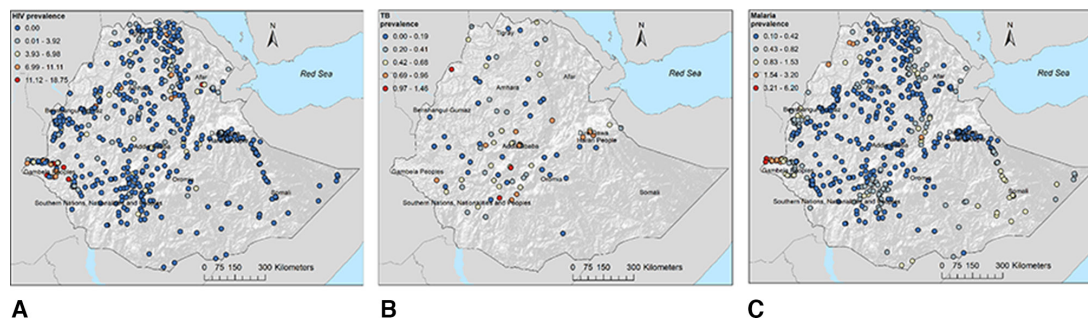


Figure 1 Geographical locations of data points and prevalence of (A) HIV, (B) tuberculosis and (C) malaria in Ethiopia.

was 1.54% for HIV (95% CI 1.40 to 1.70), 0.39% (95% CI 0.34 to 0.45) for TB and 1.1% (95% CI 0.95 to 1.32) for malaria among all ages. Substantial variation was observed in the prevalence of these diseases at regional levels, with the highest prevalence of TB observed in Dire Dawa (0.96%) and Gambela (0.88%) regions and the highest prevalence of malaria observed in Gambela (6.1%) and Benishangul-Gumuz (3.8%) regions. The prevalence of HIV was highest in Gambela (4.52), Addis Ababa (3.52%) and Dire Dawa (2.67%) regions and lowest in Somali (0.09%), Southern Nations, Nationalities, and People’s (0.36%) and Benishangul-Gumuz regions (0.79%).

Spatial distribution of HIV, TB and malaria prevalence

The prevalence of HIV, TB and malaria varied substantially within regions. Figure 2 shows the predicted prevalence of HIV, TB and malaria in Ethiopia at the pixel level. The prevalence of HIV was spatially varied, with the highest prevalence (ie, hotspot areas) predicted in Gambela region and major cities such as Addis Ababa, Dire Dawa, Harer and Desie (figure 2A). The peripheral areas of the country (eg, Afar and Somali regions) bordering Djibouti, Somalia, Eritrea and Kenya had the highest prevalence of TB while the central, northern and western parts of the country had the lowest prevalence of

TB (figure 2B). High malaria prevalence was predicted in the northwest (eg, Humera, Metema, Sanja, Quara) and eastern (eg, Kebridehar, Gode) parts of the country and in the Great Rift Valley (figure 2C). In contrast, a low prevalence of malaria was predicted in the central parts of the country. Prediction uncertainty, as indicated by a high SD, was greatest in the border regions (Afar and Somali) for all diseases (online supplemental figure S1).

Spatial codistribution of HIV, TB and malaria prevalence

Areas of spatial overlap of combinations of two or three diseases were predicted in focal areas across the country (figure 3). For example, the burden of all three diseases was high in Gambela region. Geographical overlap of high TB and HIV prevalence was also observed in the Afar region.

Drivers of HIV, TB and malaria prevalence

Table 2 shows the results of the Bayesian geostatistical models. Travel times to the nearest city in minutes (mean regression coefficient (β): -0.532; 95% credible interval (95% CrI) -0.960 to -0.122) was negatively associated with HIV prevalence; whereas population density (people per square kilometre, β : 0.010; 95% CrI 0.005 to 0.014) and distance to water body (km, β : 0.182; 95% CrI 0.053 to 0.311) were positively associated with HIV prevalence.

Table 1 National and regional prevalence of TB, HIV and malaria in Ethiopia

Regions	HIV prevalence (%)	TB prevalence (%)	Malaria prevalence (%)
Addis Ababa	3.52	0.67	NA
Afar	1.29	0.57	0.3
Amhara	1.19	0.32	0.8
Benishangul-Gumuz	0.79	0.00	3.8
Dire Dawa	2.67	0.96	0.0
Gambela	4.52	0.88	6.1
Oromiya	1.21	0.33	0.3
SNNPR	0.36	0.50	0.5
Somali	0.09	0.43	0.0
Tigray	1.08	0.30	0.8
Ethiopia	1.52	0.39	1.1

HIV, Human immunodeficiency virus; NA, Not available ; SNNPR, Southern Nations, Nationalities, and People’s Region; TB, tuberculosis.

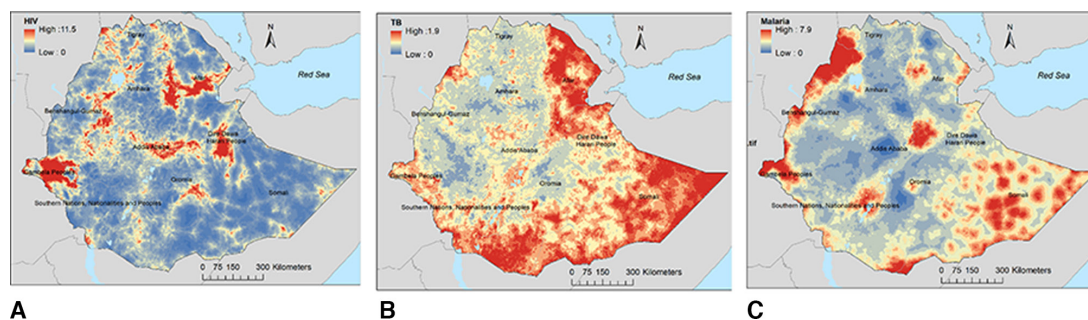


Figure 2 The predicted geospatial maps for the prevalence of (A) HIV, (B) tuberculosis and (C) malaria in Ethiopia.

Population density was also positively associated with TB prevalence (β : 0.008; 95% CrI 0.001 to 0.014). Climatic factors such as annual mean temperature ($^{\circ}\text{C}$, β : 0.346; 95% CrI 0.258 to 0.434) and annual mean precipitation (mm, β : 0.312; 95% CrI 0.262 to 0.362) as well as travel time to the nearest city in minutes (minutes, β : 0.113; 95% CrI 0.084 to 0.142) were found to be positively associated with malaria prevalence. In contrast, population density (β : -0.005 ; 95% CrI -0.006 to -0.004) and distance to health facility (minutes, β : -0.300 ; 95% CrI -0.347 to -0.254) were negatively associated with malaria prevalence.

Results of model validations for HIV prevalence (online supplemental figure S2), TB prevalence (online supplemental figure S3) and malaria prevalence (online supplemental figure S4) are presented in online supplemental file 1. The CPO and PIT indicated that the predictive models were well fitted. According to the WAIC statistic, the model that contained all covariates was the best-fitting model for all diseases (online supplemental table S2).

DISCUSSION

The national HIV prevalence in Ethiopia was 1.5%, which is lower than the African HIV prevalence (3.9%) but nearly two times the global average HIV prevalence

(0.8%).⁴¹ The prevalence of TB in Ethiopia was 0.39%, which is similar to other African countries such as Kenya (0.56%),⁴² Zambia (0.63%)⁴³ and Gambia (0.21%),⁴⁴ but higher than other high TB burden countries in Asia such as India (0.03%)⁴⁵ and China (0.06%).⁴⁶ The prevalence of malaria in our study was 1.1%, which is lower than in other African countries, but it varied greatly at a lower administrative level,⁴⁷ with large populations still exposed to substantial malaria risk.

Our study showed that remoteness, demography and climatic factors were associated with the spatial distribution of HIV, TB and malaria. As the transmission mechanisms and preventive measures of TB, HIV and malaria are complex and multi-factorial, there are some risk factors that affect the spatial codistribution of the three diseases. For example, our study showed that population density was a common variable in all three diseases which was positively associated with both HIV and TB prevalence and negatively associated with malaria prevalence. Our study also showed a positive association of distance to a water body with HIV prevalence while a negative effect on travel times and a positive effect on population density was observed. Staying further away from water bodies may be a proxy indicator of economic, environmental and social needs which may have an impact on HIV prevalence. For example, food insecurity which can be caused by a lack of water sources can drive sexual risk-taking behaviours and migration, as well as increase susceptibility to infections that are common among people living with HIV.⁴⁸ Moreover, longer travel times to cities may indicate low urbanicity and a low population density which favours a lower risk of HIV and TB coinfection. Previous studies also found that people living in a capital city were at a high risk of TB and HIV infection.^{13,49}

This may be because transmission of TB and HIV may be more common in urban settings due to overcrowding and higher population density. Other explanations aside from the close association between HIV and TB may be indirect factors related to low income, high rates of migration especially in infected individuals migrating from high prevalent areas, as well as high levels of social networking. HIV risk behaviours such as commercial sex work and drug use are also common in capital cities.⁵⁰ Consistent with previous studies, climatic factors such as high annual mean temperature and high annual mean

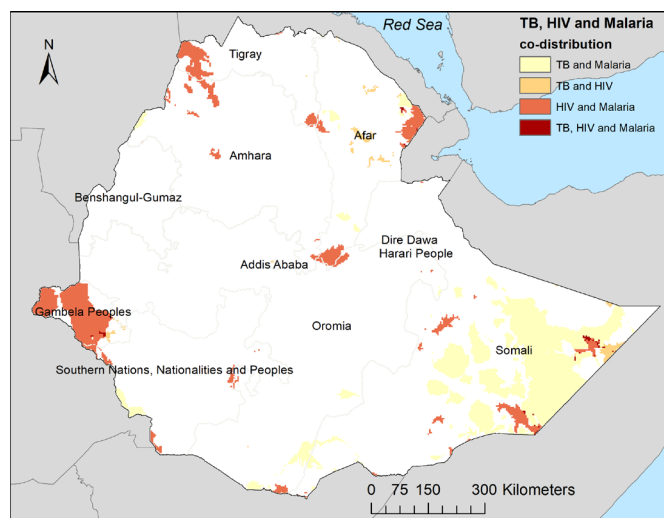


Figure 3 Predicted areas of codistribution for tuberculosis, HIV and malaria, Ethiopia. High prevalence is defined as a prevalence of more than the upper quartile.

Table 2 Regression coefficient mean and 95% credible intervals (CrI) of covariates included in a Bayesian spatial model with Binomial response for the prevalence of tuberculosis, HIV and malaria in Ethiopia

Covariates	HIV	Tuberculosis	Malaria
	Regression coefficients Mean (95% CrI)	Regression coefficients Mean (95% CrI)	Regression coefficients Mean (95% CrI)
Temperature	0.23 (−0.92 to 1.430)	−0.62 (−1.58 to 0.35)	0.34 (0.26 to 0.43)
Precipitation	−0.01 (−0.47 to 0.426)	−0.22 (−0.57 to 0.09)	0.31 (0.26 to 0.36)
Altitude	−0.11 (−1.31 to 1.133)	−0.72 (−1.76 to 0.33)	−0.06 (−0.15 to 0.02)
Travel time to city	−0.53 (−0.96 to −0.122)	0.18 (−0.12 to 0.48)	0.11 (0.08 to 0.14)
Population density	0.01 (0.005 to 0.014)	0.008 (0.001 to 0.014)	−0.005 (−0.006 to −0.005)
Distance to water body	0.18 (0.05 to 0.31)	0.05 (−0.13 to 0.24)	−0.002 (−0.011 to 0.007)
Distance to health facility	−0.44 (−1.04 to 0.12)	−0.29 (−0.91 to 0.29)	−0.300 (−0.35 to −0.254)
Intercept	−5.97 (−6.67 to −5.37)	−5.58 (−6.42 to −4.90)	−5.667 (−5.88 to −5.44)

Bold shows ‘statistically significant’ results within a Bayesian framework (no zero within the 95% CrI).

precipitation as well as long travel time to the nearest city were positively associated with malaria prevalence.^{51 52} In contrast, the population density was negatively associated with malaria prevalence, which is not surprising given malaria is more common in rural areas.

Substantial spatial variation was observed in all three diseases at regional and local levels in Ethiopia. Previous studies have reported similar spatial clustering of HIV, TB and malaria in Ethiopia.^{13 15 53} However, the current study provided additional information in which the spatial distribution of HIV, TB and malaria overlapped in some parts of the country. For example, hotspots of a high prevalence of all three diseases were observed in Gambela region. This region is located in the west of Ethiopia, bordering South Sudan, and characterised by low healthcare access, low socioeconomic index and high temperature and rainfall.⁵⁴ These demographic and climatic factors have been reported as some of the main drivers of TB transmission.⁵⁵ The high prevalence of HIV, TB and malaria along the border areas might be due to inadequate case management and weaker healthcare systems.⁵⁴ It could be also due to cross-border travel and high rates of infection across the border.⁵⁶ Previous studies in Ethiopia showed that malaria transmission is endemic in lowland areas with warm and humid climates like the Gambela region and appears to be epidemic in highland areas.⁵⁷ The high prevalence of HIV in Gambela region could be due to cultural practices such as polygamy practices and male uncircumcision.

Spatial overlap of TB and HIV prevalence was also observed in Harari, Dire Dewa and Afar regions. While there were hotspots of TB and malaria in the Somali region, there was little HIV in this region. In addition, while TB and malaria hotspots were generally observed in the most rural and peripheral areas sharing international borders, high HIV prevalence was mostly observed in the capital cities. These findings suggested that although there was overlap in the distribution of infectious diseases in some parts of the country, this was not the case throughout the country. This highlights that

targeting service integration approaches that consider the profile of diseases at a local level would be more effective than nationwide service integration. Geographically targeted service integration may enhance the efficiency and cost-effectiveness of disease control programmes. Thus, mapping the codistribution of infectious diseases such as HIV, TB and malaria would be a key step in strengthening integrated disease control programmes.

The SDGs articulate a goal to end HIV, TB and malaria epidemics by 2030.³ Health service integration has been recommended by WHO as one strategy to enhance the prevention and control of these diseases. Integration of TB, HIV and malaria services has been implemented in many resource-limited countries including Ethiopia.⁵⁸ Ethiopia has implemented an Integrated Disease Surveillance and Response (IDSR) strategy since 1996,⁵⁹ which has made a significant contribution to the control and prevention of communicable diseases by filling the gaps observed in vertical disease control programmes.⁶⁰ However, several challenges were identified with the implementation of IDSR such as limited financial resources, lack of coordination, inadequate training and supervision.⁶⁰ Targeting the IDSR strategy according to local disease profiles may help overcome these challenges.

This study has some important limitations, including the difference in data collection periods. While the data for HIV and malaria were collected in 2016 and 2015, respectively, the data for TB were collected between 2010 and 2011. Additionally, due to a lack of available data, some important ecological level variables were not included in our geospatial models, which might affect the validity of the prediction maps. Finally, the data on TB was much sparser than for malaria and HIV, and the spatial predictions are therefore likely to be less robust and strongly driven by the effect of covariates particularly in areas with no observed data on those which are sparsely populated. In another study we have investigated supplementing the national survey on TB with data from other studies, using a geospatial meta-analytic approach.²²

CONCLUSION

Our study found that the national prevalence of TB, HIV and malaria varied substantially at subnational and local levels. The spatial distribution of the diseases was associated with demographic and climatic factors. Spatial overlap of TB, HIV and malaria prevalence was observed in some parts of the country, with one area with a high prevalence of all three diseases being the Gambela region. This highlights that targeting service integration approaches at a local level would be more effective than nationwide service integration. These findings can guide policymakers in Ethiopia to design geographically targeted and integrated disease control programmes to achieve maximum impact.

Author affiliations

¹Geospatial Health and Development, Telethon Kids Institute, Nedlands, Western Australia, Australia

²Faculty of Health Sciences, Curtin University, Perth, Western Australia, Australia

³University of Western Australia, Perth, Western Australia, Australia

⁴Wesfarmers Centre for Vaccines and Infectious Diseases, Telethon Kids Institute, Nedlands, Western Australia, Australia

⁵National Institute for Medical Research, Dar es Salaam, Tanzania

⁶School of Nursing, College of Medicine and Health Sciences, University of Gondar, Gondar, Ethiopia

⁷National TB Control Program, Ministry of Health, Addis Ababa, Ethiopia

Twitter Dylan D Barth @crocodilebert

Acknowledgements This publication was supported by the Bill & Melinda Gates Foundation.

Contributors KAAlele conceived and designed the study, run the analysis and drafted the manuscript. PA checked the analysis. AE, DDB, SFR, PA and ACAC made substantial contributions in reviewing the design of the study and the draft manuscript. AE, DDB, SFR, PA, DJW, KAAalele, AKE, PWG and ACAC critically reviewed the manuscript for important intellectual content. All authors contributed to the final approval of the version to be submitted. KAAlele is the guarantor for this publication.

Funding KAAlele is funded by an Australian National Health and Medical Research Council Investigator Grant (APP1196549). This work was supported, in whole or in part, by the Bill & Melinda Gates Foundation.

Map disclaimer The inclusion of any map (including the depiction of any boundaries therein), or of any geographic or locational reference, does not imply the expression of any opinion whatsoever on the part of BMJ concerning the legal status of any country, territory, jurisdiction or area or of its authorities. Any such expression remains solely that of the relevant source and is not endorsed by BMJ. Maps are provided without any warranty of any kind, either express or implied.

Competing interests None declared.

Patient consent for publication Not applicable.

Ethics approval This study does not involve human participants and this study used publicly available data sources and ethical approval was not required.

Provenance and peer review Not commissioned; externally peer reviewed.

Data availability statement All data relevant to the study are included in the article or uploaded as supplementary information.

Supplemental material This content has been supplied by the author(s). It has not been vetted by BMJ Publishing Group Limited (BMJ) and may not have been peer-reviewed. Any opinions or recommendations discussed are solely those of the author(s) and are not endorsed by BMJ. BMJ disclaims all liability and responsibility arising from any reliance placed on the content. Where the content includes any translated material, BMJ does not warrant the accuracy and reliability of the translations (including but not limited to local regulations, clinical guidelines, terminology, drug names and drug dosages), and is not responsible for any error and/or omissions arising from translation and adaptation or otherwise.

Open access This is an open access article distributed in accordance with the Creative Commons Attribution 4.0 Unported (CC BY 4.0) license, which permits others to copy, redistribute, remix, transform and build upon this work for any purpose, provided the original work is properly cited, a link to the licence is given, and indication of whether changes were made. See: <https://creativecommons.org/licenses/by/4.0/>.

ORCID iD

Andargachew Kumsa Erena <http://orcid.org/0000-0003-1245-7676>

REFERENCES

- Naghavi M, Abajobir AA, Abbafati C, *et al*. Global, regional, and national age-sex specific mortality for 264 causes of death, 1980–2016: a systematic analysis for the global burden of disease study 2016. *The Lancet* 2017;390:1151–210.
- Murray CJL, Ortblad KF, Guinovart C, *et al*. Global, regional, and national incidence and mortality for HIV, tuberculosis, and malaria during 1990–2013: a systematic analysis for the global burden of disease study 2013. *The Lancet* 2014;384:1005–70.
- Bekker L-G, Alleyne G, Baral S, *et al*. Advancing global health and strengthening the HIV response in the era of the sustainable development goals: the International AIDS Society—Lancet Commission. *The Lancet* 2018;392:312–58.
- WHO. *Global tuberculosis report 2020*. Geneva: World Health Organization, 2020.
- Bruchfeld J, Correia-Neves M, Källenius G. Tuberculosis and HIV coinfection. *Cold Spring Harb Perspect Med* 2015;5:a017871.
- Pawlowski A, Jansson M, Sköld M, *et al*. Tuberculosis and HIV coinfection. *PLoS Pathog* 2012;8:e1002464.
- Chalwe V, Van geertruyden J-P, Mukwamataba D, *et al*. Increased risk for severe malaria in HIV-1-infected adults, Zambia. *Emerg Infect Dis* 2009;15:749.
- Cohen C, Karstaedt A, Frean J, *et al*. Increased prevalence of severe malaria in HIV-infected adults in South Africa. *Clin Infect Dis* 2005;41:1631–7.
- Teixeira R, Rodrigues MGA, Ferreira MD, *et al*. Tuberculosis and malaria walk side by side in the Brazilian Amazon: an ecological approach. *Trop Med Int Health* 2019;24:1003–10.
- Ranaweera D, Kanchana Rajapaksha RMJ, Silva P, *et al*. Severe Plasmodium vivax malaria, HIV, tuberculosis co-infection in a Sri Lankan traveller: case management and challenges during the prevention of malaria reintroduction phase. *Malar J* 2018;17:1–8.
- Clements ACA, Deville M-A, Ndayishimiye O, *et al*. Spatial co-distribution of neglected tropical diseases in the East African great lakes region: revisiting the justification for integrated control. *Trop Med Int Health* 2010;15:198–207.
- Brooker S, Clements ACA, Hotez PJ, *et al*. The co-distribution of Plasmodium falciparum and hookworm among African schoolchildren. *Malar J* 2006;5:1–8.
- Alene KA, Viney K, Moore HC, *et al*. Spatial patterns of tuberculosis and HIV co-infection in Ethiopia. *PLoS One* 2019;14:e0226127.
- Kibret GD, Ferede A, Leshargie CT, *et al*. Trends and spatial distributions of HIV prevalence in Ethiopia. *Infect Dis Poverty* 2019;8:1–9.
- Ayele DG, Zewotir TT, Mwambi HG. Spatial distribution of malaria problem in three regions of Ethiopia. *Malar J* 2013;12:1–14.
- UN. *World population prospects (2019 revision) United nations population estimates and projections: United nations*, 2019.
- WHO. *Use of high burden country Lists for TB by WHO in the post-2015 era*. Geneva, Switzerland: Organization GTPaWH, 2015.
- WHO. *World malaria report 2020: 20 years of global progress and challenges*. Geneva: World Health Organization, 2020.
- Alene KA, Viney K, Gray DJ, *et al*. Mapping tuberculosis treatment outcomes in Ethiopia. *BMC Infect Dis* 2019;19:474.
- Workie NW, Ramana GN. *The health extension program in Ethiopia*, 2013.
- Ababa A. Ethiopia. Abstract available from, 2013. Available: <https://wfpha.confex.com/wfpha/2012/webprogram/Paper10587.html>
- Alene KA, Wagaw ZA, Clements ACA. Mapping tuberculosis prevalence in Ethiopia: protocol for a geospatial meta-analysis. *BMJ Open* 2020;10:e034704.
- Kebede AH, Alebachew Z, Tsegaye F, *et al*. The first population-based national tuberculosis prevalence survey in Ethiopia, 2010–2011. *Int J Tuberc Lung Dis* 2014;18:635–9.
- EPHI. *Ethiopia national malaria indicator survey 2015*. Addis Ababa: Ethiopian Public Health Institute, 2016.
- Fick SE, Hijmans RJ. WorldClim 2: new 1-km spatial resolution climate surfaces for global land areas. *International Journal of Climatology* 2017;37:4302–15.

- 26 Farr TG, Kobrick M. Shuttle radar topography mission produces a wealth of data. *Eos, Transactions American Geophysical Union* 2000;81:583–5.
- 27 Weiss DJ, Nelson A, Gibson HS, *et al.* A global map of travel time to cities to assess inequalities in accessibility in 2015. *Nature* 2018;553:333–6.
- 28 Tatem AJ, WorldPop TAJ. WorldPop, open data for spatial demography. *Sci Data* 2017;4:1–4.
- 29 Lehner B, Döll P. Global lakes and wetlands database glwd. *GLWD Documentation* 2004.
- 30 Weiss DJ, Crabtree RL. Percent surface water estimation from MODIS BRDF 16-day image composites. *Remote Sens Environ* 2011;115:2035–46.
- 31 Areas GA. *GADM database of global administrative areas*. Global Administrative Areas, 2012.
- 32 Diggle PJ, Tawn JA, Moyeed RA. Model-Based geostatistics. *J R Stat Soc Series B* 1998;47:299–350.
- 33 Rue H, Martino S, Chopin N. Approximate Bayesian inference for latent Gaussian models by using integrated nested Laplace approximations. *J R Stat Soc Series B* 2009;71:319–92.
- 34 Lindgren F, Rue H, Lindström J. An explicit link between Gaussian fields and Gaussian Markov random fields: the stochastic partial differential equation approach. *J R Stat Soc Series B* 2011;73:423–98.
- 35 Fuglstad G-A, Simpson D, Lindgren F, *et al.* Constructing priors that penalize the complexity of Gaussian random fields. *J Am Stat Assoc* 2019;114:445–52.
- 36 Thomas A, Best N, Lunn D. *GeoBUGS user manual*. Cambridge: Medical Research Council Biostatistics Unit, 2004.
- 37 Magalhães RJS, Clements ACA, Patil AP, *et al.* The applications of model-based geostatistics in helminth epidemiology and control. *Adv Parasitol* 2011;74:267–96.
- 38 Soares Magalhães RJ, Biritwum N-K, Gyapong JO, *et al.* Mapping helminth co-infection and co-intensity: geostatistical prediction in Ghana. *PLoS Negl Trop Dis* 2011;5:e1200.
- 39 Pettit LI. The conditional predictive ordinate for the normal distribution. *J R Stat Soc Series B* 1990;52:175–84.
- 40 Marshall EC, Spiegelhalter DJ. Approximate cross-validators predictive checks in disease mapping models. *Stat Med* 2003;22:1649–60.
- 41 WHO. *Progress report on HIV, viral hepatitis and sexually transmitted infections 2019: accountability for the global health sector strategies, 2016–2021*. World Health Organization, 2019.
- 42 Enos M, Sitienei J, Ong'ang'o J, Ong'ang'o J, *et al.* Kenya tuberculosis prevalence survey 2016: challenges and opportunities of ending TB in Kenya. *PLoS One* 2018;13:e0209098.
- 43 Kapata N, Chanda-Kapata P, Ngosa W, *et al.* The prevalence of tuberculosis in Zambia: results from the first national TB prevalence survey, 2013–2014. *PLoS One* 2016;11:e0146392.
- 44 Adetifa IM, Kendall L, Bashorun A, Adedapo Bashorun CL, *et al.* A tuberculosis nationwide prevalence survey in Gambia, 2012. *Bull World Health Organ* 2016;94:433.
- 45 Sathiyamoorthy R, Kalaivani M, Aggarwal P, *et al.* Prevalence of pulmonary tuberculosis in India: a systematic review and meta-analysis. *Lung India* 2020;37:45.
- 46 Wang L, Zhang H, Ruan Y, *et al.* Tuberculosis prevalence in China, 1990–2010; a longitudinal analysis of national survey data. *Lancet* 2014;383:2057–64.
- 47 O'Meara WP, Mangeni JN, Steketee R, *et al.* Changes in the burden of malaria in sub-Saharan Africa. *Lancet Infect Dis* 2010;10:545–55.
- 48 Lieber M, Chin-Hong P, Whittle HJ, *et al.* The synergistic relationship between climate change and the HIV/AIDS epidemic: a conceptual framework. *AIDS Behav* 2021;25:2266–77.
- 49 Kuddus MA, Tynan E, McBryde E. Urbanization: a problem for the rich and the poor? *Public Health Rev* 2020;41:1–4.
- 50 Tadesse N, Awoke Ayele T, Birhanu Mengesha Z, *et al.* High prevalence of HIV/AIDS risky sexual behaviors among street youth in gondar town: a community based cross sectional study. *BMC Res Notes* 2013;6:1–6.
- 51 Caminade C, Kovats S, Rocklov J, *et al.* Impact of climate change on global malaria distribution. *Proc Natl Acad Sci U S A* 2014;111:3286–91.
- 52 Gething PW, Smith DL, Patil AP, *et al.* Climate change and the global malaria recession. *Nature* 2010;465:342–5.
- 53 Ying R, Fekadu L, Schackman BR, *et al.* Spatial distribution and characteristics of HIV clusters in Ethiopia. *Trop Med Int Health* 2020;25:301–7.
- 54 Alene KA, Gelaw YA, Fetene DM, *et al.* COVID-19 in Ethiopia: a geospatial analysis of vulnerability to infection, case severity and death. *BMJ Open* 2021;11:e044606.
- 55 Quinn SC, Kumar S. Health inequalities and infectious disease epidemics: a challenge for global health security. *Biosecur Bioterror* 2014;12:263–73.
- 56 Wangdi K, Gatton ML, Kelly GC, *et al.* Cross-Border malaria: a major obstacle for malaria elimination. *Adv Parasitol* 2015;89:79–107.
- 57 Tesfaye S, Belyhun Y, Teklu T, *et al.* Malaria prevalence pattern observed in the highland fringe of Butajira, southern Ethiopia: a longitudinal study from parasitological and entomological survey. *Malar J* 2011;10:1–9.
- 58 Anku PJ, Amo-Adjei J, Doku D, *et al.* Challenges of scaling-up of TB-HIV integrated service delivery in Ghana. *PLoS One* 2020;15:e0235843.
- 59 WHO. *Update: integrated diseases surveillance and response implementation in Ethiopia*. Addis Ababa, 2005.
- 60 Phalkey RK, Yamamoto S, Awate P, *et al.* Challenges with the implementation of an integrated disease surveillance and response (IDSR) system: systematic review of the lessons learned. *Health Policy Plan* 2015;30:131–43.