

# Definitive extended field intensity-modulated radiotherapy and concurrent cisplatin chemosensitization in the treatment of IB2–IIIB cervical cancer

Guangyu Zhang<sup>1</sup>, Fangfang He<sup>1</sup>, Chunli Fu<sup>2</sup>, Youzhong Zhang<sup>3</sup>, Qian Yang<sup>1</sup>, Jianbo Wang<sup>1</sup>, Yufeng Cheng<sup>1</sup>

Departments of <sup>1</sup>Radiation Oncology, <sup>2</sup>Geriatrics, and <sup>3</sup>Obstetrics and Gynecology, Qilu Hospital of Shandong University, Jinan, China

**Objective:** To assess the toxicity of delivering extended field intensity-modulated radiotherapy (EF-IMRT) and concurrent cisplatin chemotherapy for locally advanced cervical carcinoma.

**Methods:** Forty-five patients who underwent EF-IMRT and concurrent cisplatin chemotherapy for the treatment of stage IB2 to IIIB cervical cancer were retrospectively reviewed. The clinical target volume included all areas of gross and potentially microscopic disease and regional lymph node regions. All patients underwent high-dose-rate brachytherapy. The acute and late toxicity were scored using the Common Terminology Criteria for Adverse Events and the Radiation Therapy Oncology Group late radiation morbidity scoring criteria, respectively.

**Results:** The median follow-up was 28 months (range, 5 to 62 months). Forty-two patients had a complete response, and three had a persistent disease. Of those 42 patients, 15 patients (35.7%) had recurrence. The regions of recurrence were in-field in 2 patients and out-field in 13 patients. Acute grade  $\geq 3$  gastrointestinal, genitourinary and hematologic toxicity occurred in 3, 1, and 9 patients, respectively. Three patients (6.7%) suffered from late grade 3 toxicities. Seven patients experienced ovarian transposition, 5 of those patients (71%) maintained ovarian function. Thirty-eight patients (84.4%) were alive at the last follow-up.

**Conclusion:** Concurrent cisplatin chemotherapy with EF-IMRT was safe. The acute and late toxicities are acceptable. EF-IMRT provides an opportunity to preserve endocrine function for patients with ovarian transposition.

**Keywords:** Cervical cancer, Chemotherapy, Extended field, Intensity-modulated radiotherapy, Toxicity

## INTRODUCTION

Radiotherapy and concurrent cisplatin-based chemosensitization has become the standard treatment for locally advanced cervical cancer. Previous randomized studies [1-3] showed that a combined approach, including cisplatin with and without 5-fluorouracil (FU) chemotherapy and radiotherapy, improved

survival, progression-free survival and recurrence rates in patients with locally advanced cervical cancer. The 5-year disease-free survival is diminished because cervical cancer often metastasizes in an orderly fashion, initially involving the low pelvis and progressing to high pelvic lymph nodes and para-aortic nodes (PAN) and finally to the supraclavicular lymph nodes [4]. It has long been recognized that many patients with locally advanced cervical carcinoma harbor occult para-aortic metastases [5]. Berman et al. [5] showed a clear correlation between the incidence of nodal involvement and advancing tumor stage. They evaluated 621 patients and found PAN disease in 5% of stage I, 16% of stage II, and 25% of stage III patients [5].

Received Aug 22, 2013, Revised Nov 14, 2013, Accepted Nov 21, 2013

Correspondence to Yufeng Cheng

Department of Radiation Oncology, Qilu Hospital of Shandong University, No 107 West Wenhua Road, Jinan 250012, China. E-mail: qiluchengyf@aliyun.com

Copyright © 2014. Asian Society of Gynecologic Oncology, Korean Society of Gynecologic Oncology

This is an Open Access article distributed under the terms of the Creative Commons Attribution Non-Commercial License (<http://creativecommons.org/licenses/by-nc/3.0/>) which permits unrestricted non-commercial use, distribution, and reproduction in any medium, provided the original work is properly cited.

Once cervical cancer has metastasized to the PAN, the patients have a poor prognosis [6]. It has been suggested that patients undergo extended field radiation therapy (EFRT), including the para-aortic region, with both pelvic masses and metastatic PANs [5,7,8]. A prospective and randomized study reported that para-aortic irradiation improved the overall survival and reduced distant metastases without concurrent chemotherapy [9]. However, there is inherent toxicity in the treatment of the pelvis and the para-aortic nodal regions. The Radiation Therapy Oncology Group (RTOG) 7920 reported an 8% risk of grade 4 to 5 toxicity with extended field treatment compared with 4% in the pelvic-only arm, which approached statistical significance ( $p=0.06$ ) [9]. In the update of the RTOG 90-01 trial, 12% of the patients treated with extended field radiotherapy had late grade 3 to 4 toxicity [10]. Conflicting evidence exists regarding the toxicity of concurrent chemoradiation with EFRT. Some studies report substantial toxicities [11]. Sood et al. [12] reported that 77.5% of patients treated with EFRT and concurrent chemoradiation suffered from grade 3 to 4 hematologic toxicity. On the contrary, other studies have reported acceptable side effect profiles [13]. The different results reflect that the use of concurrent chemotherapy and EFRT has remained controversial.

Intensity-modulated radiotherapy (IMRT) has been shown to decrease the incidence of acute and late gastrointestinal toxicities. Jensen et al. [14] demonstrated that extended-fielded IMRT was associated with low rates of acute gastrointestinal (GI) toxicities, late toxicity and locoregional failure.

In the current study, we retrospectively evaluated toxicity among patients with International Federation of Obstetrics and Gynecology (FIGO) stage IB2–IIIB cervical cancer treated with extended field IMRT (EF-IMRT) and concurrent cisplatin chemotherapy. We began by exploring the feasibility of reducing ovarian toxicity and evaluated the variation of ovarian function in patients with ovarian transposition.

## MATERIALS AND METHODS

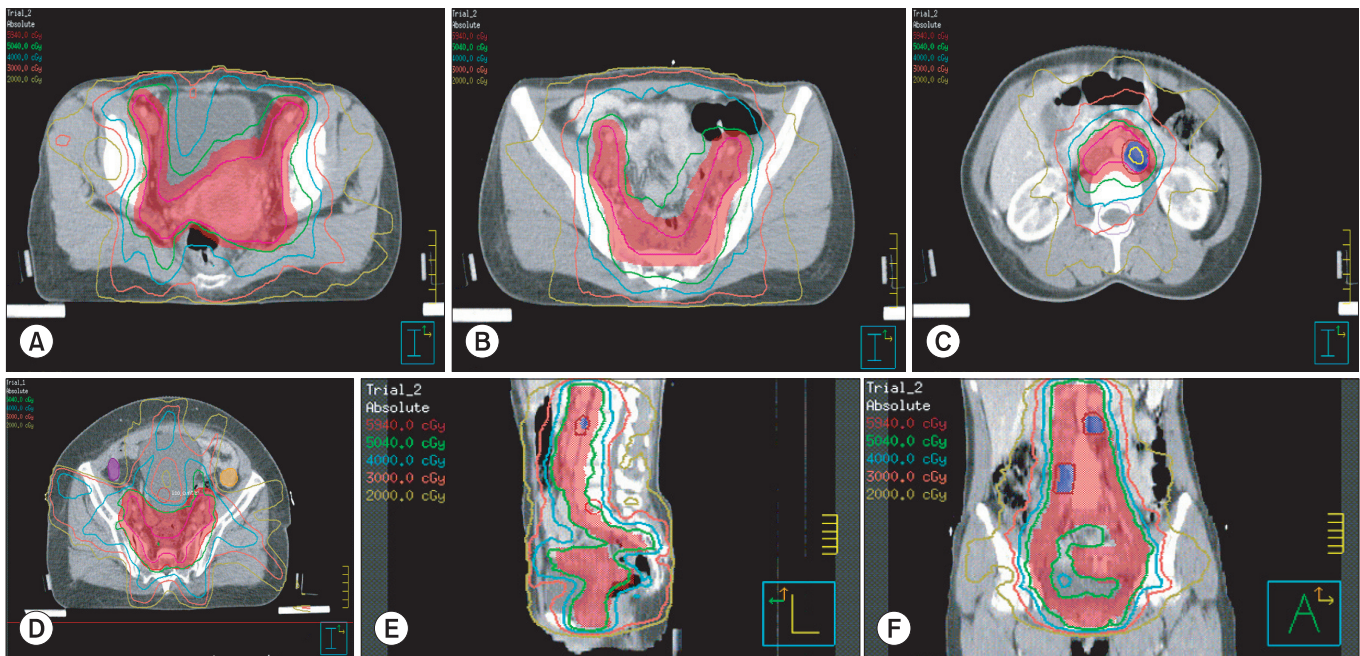
### 1. Patients

Between 2006 and 2010, 171 patients with disease classified as FIGO stage IB2–IIIB treated at the Department of Radiation Oncology, Qilu Hospital of Shandong University were reviewed. Women who were treated with EF-IMRT with concomitant cisplatin chemosensitization were identified and included in this analysis. The initial evaluation of all patients included a history and physical exam, chest radiography, complete blood count, and measurements of liver and renal function. All patients underwent exams under anesthesia

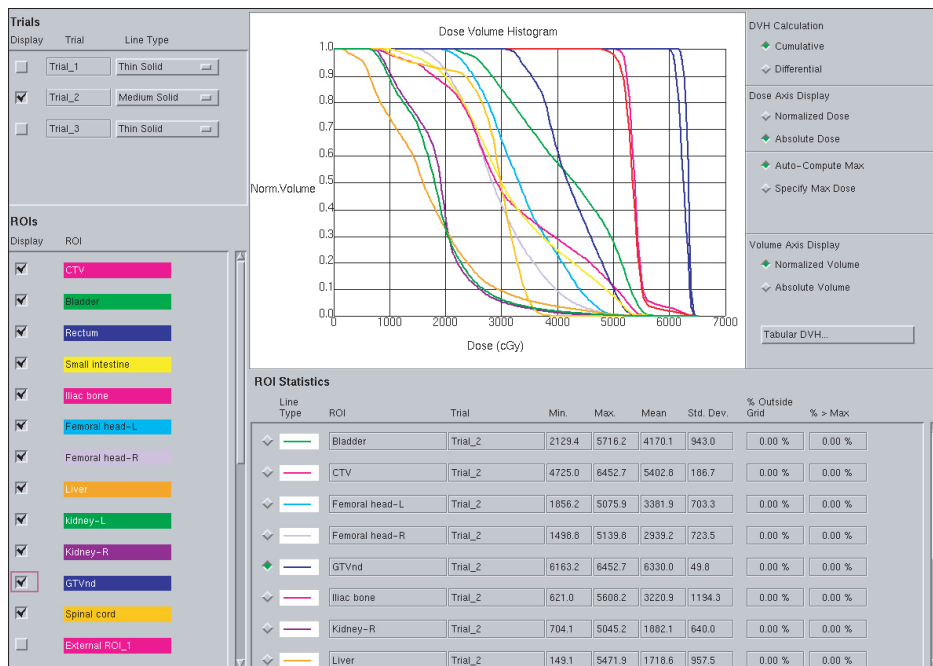
for staging purposes by two gynecologic oncologists, and additional modalities, including computed tomography (CT), magnetic resonance imaging (MRI), and biopsy, were utilized to identify nodal disease. Sites suspected of metastatic disease were either biopsied or judged to be metastatic based on radiographic criteria. Lymph nodes that were positive by radiographic assessment were defined as greater than 1 cm or reported as pathologically enlarged by an attending physician on the final radiology report. Forty-five patients underwent EF-IMRT as a result of suspicious pelvic or para-aortic lymph nodes or excessive local pelvic tumor burden. To preserve ovarian function, 7 patients underwent ovarian transposition by an abdominal procedure or a laparoscopic procedure prior to radiotherapy. The local ethics committee at Qilu Hospital of Shandong University approved the study.

### 2. Radiotherapy and chemotherapy

All patients underwent an initial CT simulation in the supine position with their arms on their chests, using intravenous contrast agents and free breathing. According to the consensus of our institution, we determine the dose-volume parameters and target volume in this study. The clinical target volume (CTV) included all areas of gross and potentially microscopic disease and included the upper half of the vagina, parametria, uterus, and regional lymph node regions (obturator, common, internal and external iliacs, presacral region and para-aortic regions) (**Fig. 1A, B**). The CTV in the pelvis consisted of a 2 cm margin around the cervix, uterus, parametria, presacral space, and vagina. Considering the unreliability of current imaging techniques to determine involvement of the parametria [15] and the possibility of movement during the course of radiotherapy, all pelvic tissue lateral to the cervix and upper vagina were considered to be part of the parametria. The vaginal volume consisted of 4 cm of vagina distal to the lower extent of the tumor (defined by imaging of tumor or marker seeds). The external, internal, and common iliac nodal volume was based on the contrast-enhanced vessels with a 0.7–1 cm circumferential margin. The CTV in the para-aortic region was contiguous with the pelvic lymph node stations and generously encompassed the aorta and inferior vena cava with at least a 1.5 cm margin (**Fig. 1C**). The superior CTV border was usually at the level of T12–L1 junction. When required, the superior aspect of the CTV was modified laterally for kidney sparing and anteriorly for small bowel sparing. The presacral region was included to the level of S3 to ensure coverage of the presacral lymph nodes and the uterosacral ligament. Accounting for patient motion and set-up uncertainty in our institution, the CTV was expanded 0.8–1 cm non-uniformly to create the planned target volume. Seven patients with



**Fig. 1.** The transverse image of the target volume. (A-C) showing primary tumor and pelvic lymph nodes planning target volume (PTV) depicted in red color wash and PTV was covered by 50.4 Gy (green line). The involved para-aortic lymph nodal PTV is depicted in blue color wash. (D) Showing left transposed ovarian covered by orange color wash and right covered by purple color wash ( $V7 \leq 50\%$ ). (E) Sagittal and (F) coronal image showing PTV (red color wash) covered by 100% isodose line (green line, 50.4 Gy).



**Fig. 2.** The dose-volume histogram of the extended field intensity-modulated radiotherapy plan. The rectum and the bladder,  $V45 \leq 50\%$ , respectively; the small intestine,  $V35 \leq 45\%$ ; the kidney received,  $V25 \leq 33\%$ ; the liver,  $V30 \leq 30\%$ ; the bone marrow,  $V10 \leq 90\%$  and  $V35 \leq 45\%$ ; the ovarian,  $V7 \leq 50\%$ ; the spinal cord,  $V40 \leq 0.1$  cubic centimeters.

ovarian transposition underwent separate ovarian contouring based on clips left by the surgeon. The involved nodes were also contoured separately and were either based on clips left by surgeon or on the abnormal appearance of nodal regions

on the MRI or CT images. These areas were treated with a simultaneous integrated boost using a margin of up to 0.5 cm depending on the proximity of the small bowel or other critical structures. The entire extended field and pelvic field

were prescribed 50.4 Gy in 28 fractions, whereas the involved nodes were treated with a total dose of 57.6–59.4 Gy. There was a dose-volume limitation with no more than 50% of the ovarian volume receiving 7 Gy (**Fig. 1D**). The dose-volume limitation was applied to other organs at risk. The rectum received a dose of  $V45 \leq 50\%$ ; the bladder received a dose of  $V45 \leq 50\%$ ; the small intestine received a dose of  $V35 \leq 45\%$ ; the kidney received a dose of  $V25 \leq 33\%$ ; the liver received a dose of  $V30 \leq 30\%$ ; the bone marrow received a dose of  $V10 \leq 90\%$  and  $V35 \leq 45\%$ ; and the spinal cord received a dose of  $V40 \leq 0.1$  cubic centimeters (**Fig. 2**). The inverse treatment planning for IMRT was performed with the sliding window technique using the Philips Pinnacle<sup>3</sup> Planning System (Andover, MA, USA). All plans used seven coplanar beams. All patients were treated with 6-MV photons (**Fig. 1E**). All patients underwent high-dose-rate (HDR) intracavitary brachytherapy. Four or five fractions of six Gy each were delivered to point A. These treatments were delivered once or twice weekly, with no EF-IMRT treatment on the day of the intracavitary HDR treatment. Six patients received a parametrial boost as determined by the physician, depending on the cancer stage. Parametrial boosts of 55.8–59.4 Gy were delivered using parallel-opposed antero-posterior fields. Combining the external beam radiation doses with brachytherapy doses, the cumulative linear quadratic equivalent doses (EQD2) delivered to point A (defined as 2 cm lateral and 2 cm superior to the cervix) were 82 GyEQD2 ( $\alpha/\beta=10$  Gy)–98 GyEQD2 ( $\alpha/\beta=10$  Gy).

All patients received weekly cisplatin at a dose of 40 mg/m<sup>2</sup> during the course of external beam radiotherapy (EBRT). During EBRT, or before the initiation of chemotherapy, weekly physical examinations, complete blood counts, and liver and renal function tests were performed. If the absolute neutrophil count was  $<1,000/\text{mm}^3$  or the platelet count was  $<100,000/\text{mm}^3$ , chemotherapy was delayed or interrupted until the patient recovered.

### 3. Follow-up evaluation and statistical analysis

After RT completion, all patients were evaluated by a radiation oncologist and gynecologic oncologist after 1 month, followed by evaluations at 3-month intervals for 2 years and every 6 months thereafter. Radiologic studies and blood chemistries were ordered at the discretion of the treating oncologists. Ovarian function was evaluated by the presence or absence of postmenopausal symptoms and by the measurement of follicle-stimulating hormone (FSH) and estrogen (E2) levels. We checked the FSH levels frequently when patients returned for cancer status follow-up during the 3-month and 6-month intervals. Transient ovarian failure may last for a long time, and we defined ovarian failure as two elevated ( $>40$  U/L

FSH levels measured at least 3–6 months apart, over 2 years of follow-up after the completion of the cancer treatment. Survival was measured from the date of diagnosis to the date of death or to the date of the most recent follow-up. Time to recurrence was measured from the date of diagnosis to the date of the first failure. Acute toxicities, measured from the initiation of treatment to 90 days after completion, were graded according to the National Cancer Institute Common Terminology Criteria for Adverse Events ver. 3.0 (CTCAE 3.0).

**Table 1.** Patient characteristics

Characteristic	Value
Age (yr)	45 (25–74)
BSA (m <sup>2</sup> )	1.7 (1.4–1.9)
Tumor diameter (cm)	6 (4–11)
FIGO stage	
IB2	22 (48.9)
IIA	3 (6.7)
IIB	14 (31.1)
IIIB	6 (13.3)
Histology	
Squamous	37 (82)
Adenocarcinoma	4 (9)
Adenosquamous	2 (4.5)
Other	2 (4.5)
Pelvic nodes	
Positive	14
Biopsy	6
CT	2
MRI	5
MRI and CT	1
Negative	29
Not assessed	2
Para-aortic nodes	
Positive	5
Biopsy	3
CT	1
MRI	1
Negative	31
Not assessed	9
Ovarian transposition	7
Abdominal	2
Laparoscopic	5

Values are presented as number (%) or median (range). BSA, body surface area; CT, computed tomography; FIGO, International Federation of Gynecology and Obstetrics; MRI, magnetic resonance imaging.

Late toxicities, experienced more than 90 days after completion of therapy, were graded according RTOG late toxicity scale. Toxicities are reported as counts with percentages. The overall survival and disease-free survival rates were estimated with the Kaplan-Meier method using SPSS ver. 13.0 (SPSS Inc., Chicago, IL, USA).

**RESULTS**

Forty-five patients were treated with EF-IMRT and concurrent cisplatin chemotherapy. The clinical and pathologic characteristics of these patients are shown in **Table 1**. The median age was 45 years (range, 25 to 74 years). The total median treatment length was 48 days (range, 37 to 64 days). No delay in radiation therapy was observed.

**Table 2. Treatment toxicities**

Toxicity	Grade 1	Grade 2	Grade 3	Grade 4
<b>Acute toxicities*</b>				
Gastrointestinal	5 (11)	28 (62.2)	3 (6.7)	0
Genitourinary	1 (2)	24 (53)	1 (2.2)	0
Hematologic	4 (8.8)	14 (31.1)	9 (20)	0
<b>Late toxicities†</b>				
Gastrointestinal fistula	0	0	0	0
Genitourinary fistula	0	1 (2.2)	0	0
Sigmoid stenosis	0	0	1 (2.2)	0
Small bowel obstruction	0	2 (4.4)	2 (4.4)	0

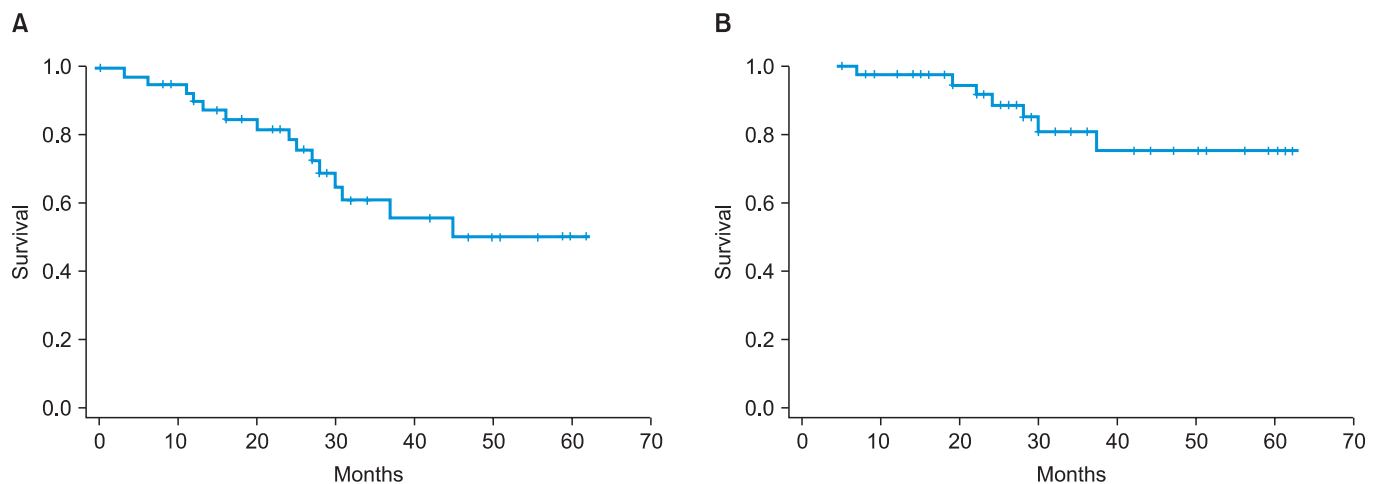
\*Acute toxicity was graded according to the National Cancer Institute Common Terminology Criteria for Adverse Events, ver. 3.0. †Late toxicity was graded according to Radiation Therapy Oncology Group late toxicity scale.

The treatments were well-tolerated. The acute toxicities are summarized in **Table 2**. Diarrhea and cystitis were the most common toxicities, with most patients reporting at least grade 1 and 2 toxicities. Twenty-eight patients (62.2%) and three patients (6.7%) were diagnosed with grade 2 and 3 acute gastrointestinal toxicities, respectively. Leukopenia was the most common hematologic toxicity. Chemotherapy for 5 patients was delayed due to a low neutrophil count. The median number of cisplatin cycles received per patient was six (range, 5 to 6 cycles).

There were three patients (6.7%) who suffered from RTOG grade 3 late toxicities. Two patients had a small bowel obstruction at 10 months that required a partial enterectomy. One patient developed sigmoid stenosis at 13 months, which required surgical intervention. Two patients suffered from RTOG grade 2 late toxicities and underwent medical therapy. No patients experienced grade 4 toxicity, and there were no treatment-related deaths. Seven patients underwent ovarian transposition by abdominal or laparoscopic procedure prior to radiotherapy. The ovaries were transposed as high or as lateral as possible, with metallic clips applied to each transposed ovary that were subsequently identified by CT simulation

**Table 3. Result at last follow-up**

State at last follow-up	No. (%)
Recurrence	15 (35.7)
In-target	2 (4.8)
Out-of-target	13 (30.9)
Persistent disease	3 (6.7)
No recurrence	27 (64.3)
Dead from the disease	7 (15.6)



**Fig. 3.** (A) Kaplan-Meier graph showing disease-free survival. (B) Kaplan-Meier graph showing overall survival.

localization. The mean ovarian dose was 2.5–3.4 Gy. Five patients (71%) maintained ovarian function. Two patients, aged 43 and 44, were classified as having ovarian failure. Their serum levels of FSH and luteinizing hormone rose progressively, and their serum E2 levels declined over 4 weeks after radiation. The lengths of time when their FSH levels were first elevated to more than 40 U/L (67 U/L and 81 U/L, respectively) were 89 and 104 days after treatment, respectively.

Forty-two patients had a complete response, and three had a persistent disease as confirmed by clinical examination and imaging studies. The median follow-up time was 28 months (range, 5 to 62 months). Thirty-eight patients (84.4%) were alive at the last follow-up. Twenty-seven patients (64.3%) had no evidence of disease, and 15 patients (35.7%) had recurrence that was documented clinically or by imaging at last the follow-up (**Table 3**). The most common sites of out-of-target failure were supraclavicular nodes (10 patients) and inguinal nodes (3 patients). The 28-month disease-free survival, and the overall survival rates for the entire cohort were 69.3% and 85.3%, respectively (**Fig. 3**).

## DISCUSSION

Due to the high incidence of occult PAN metastases in patients with advanced cervical cancer [5], EFRT has been used as both a prophylactic and a curative treatment [7,9,16]. Several studies has demonstrated that EFRT improved survival in selected cervical cancer patients [6,9], and the European Organisation for Research and Treatment of Cancer (EORTC) showed that the incidence of para-aortic and distant metastases was significantly higher in patients receiving pelvic irradiation alone, although there was no statistically significant difference in local control, overall distant metastases and survival with no evidence of disease between the EFRT and pelvic RT [17]. There is inherent toxicity in the treatment of the pelvis and the PAN regions. The addition of concurrent chemotherapy to EFRT exacerbates the acute toxicity. Prospective phase II cooperative group trials [18] have reported grade 3 to 4 acute bowel toxicity in 49% of patients treated with concomitant chemotherapy and extended field radiotherapy. In comparison, grade 3 acute gastrointestinal toxicity was experienced by 6.7% of the patients in the current study. This result is superior to those reported in previous studies [19,20], which showed grade 3 gastrointestinal toxicity among 20% and 19.4% of patients. The use of IMRT greatly assisted in the conformality of dose distribution, confined the high-dose portions of radiation fields and reduced the absorbed dose and volume in critical organs, resulting in reduced overall

toxicity. Gerszten et al. [21] found a significant reduction in critical organ irradiation with EF-IMRT and proposed that this treatment may reduce both acute and late treatment-related side effects.

To reduce myelotoxicity, we used the bone marrow-sparing IMRT approach. This technique has been shown to dosimetrically reduce the volume of bone marrow irradiated [22] and can be clinically correlated with a decreased rate of grade 2 leucopenia [23]. In our study, the volume of marrow receiving 10 Gy was reduced to  $\leq 90\%$ , and the volume receiving 35 Gy was reduced to  $\leq 45\%$ . Acute grade 3 hematologic toxicity was observed in 20% of our patients. This finding is similar to the hematologic toxicity observed in the study by Gerszten et al. [21] and is superior to the Japan study [24]. The incidence of hematologic toxicity in our series was slightly higher than the reported rates in both the Gynecologic Oncology Group (GOG) study (15%) [18] and the study by Chung et al. (10%) [25] of EFRT and concurrent chemotherapy. This difference may be related to the use of weekly chemotherapy, suggesting that the IMRT technique may not have a significant impact on this toxicity. In addition, other risk factors may account for these differences in toxicity, including low body mass index (BMI), smoking, and other causes of microvascular disease.

RTOG 90-01 [10] reported a late toxicity rate of 12% in patients treated with EFRT without concurrent chemotherapy. In previous studies with EFRT and concurrent chemotherapy, the reported late toxicities rates were 0%–14% [12,18–20,25,26]. Our result was 6.7%, which compares favorably with those results, although our follow-up is relatively limited. Fistula formation and bowel obstruction were significant late toxicities. HDR intracavitary brachytherapy was safely used with EFRT and concurrent chemotherapy [12,25]. We observed that HDR did not significantly increase late complications, which is similar to the findings of trials in which HDR brachytherapy was combined with pelvic RT and concurrent chemotherapy [27]. Jensen et al. [14] showed that the 2-year cumulative incidence of late grade  $\geq 3$  genitourinary toxicity was 4.8%, and no patients experienced late grade  $\geq 3$  gastrointestinal toxicity. It is unclear whether these toxicities were directly related to the addition of EFRT. In the present study, we found the overall survival rate to be 84.4%, which is similar to those reported in previous studies [12,19,25]. EF-IMRT concomitant with chemotherapy was effective in preventing in-target failure. The locoregional in-target control rate was good, with distant sites being the most common sites of failure. Only two patients (4.8%) developed in-target failures, and 13 patients (30.9%) had out-of-target recurrence. This result is similar to the results of two other studies [14,28]. The locoregional in-target control rate of our study compares favorably with the

result reported by Kodaira et al. [24], showing a good distant control rate with high-intensity concurrent chemotherapy.

The degree and persistence of ovarian damage and suppression of ovarian function is related to the patient's age and the dose of radiation delivered to the ovaries [29]. The importance of the dose of radiation is clear because a low dose can save many follicles and repair the damage induced in some of them. For over three decades, ovarian function has been maintained by transposing the ovaries out of the field of irradiation, which reduces the ovarian dose. Bidzinski et al. [30] confirmed that ovarian function was preserved when the ovaries were transposed at least 3 cm from the upper border of the field. In our study, 7 patients underwent ovarian transposition to a position as high or as lateral as possible by abdominal or laparoscopic procedure prior to radiotherapy. Five patients (71%) maintained ovarian function; 4 of these patients had ovarian transposition at 3–3.5 cm above the level of L5–S1 (above the iliac crest), and one of these patients had ovarian transposition at 1.5 cm from the radiation field edge. The median age of the five patients was 32 years (range, 25 to 41 years). We used a dose-volume limitation with no more than 50% of the ovarian volume receiving 7 Gy for EF-IMRT. The median ovarian dose of the five patients who preserved ovarian function was 2.8 Gy (range, 2.5 to 3.1 Gy) and the ovarian dose of the other two patients was 3.2 Gy and 3.4 Gy, respectively. Two patients (29%) experienced ovarian failure; one was 44 years old with ovarian transposition at 3–3.5 cm from the upper border of the field, and the other was 43 years old with ovarian transposition at 1.5 cm from the radiation field edge. As previously described in the literature, ovarian transposition is of limited value in patients who are older than 40 because they have an intrinsically reduced fertilization potential and an increased risk of ovarian failure despite transposition [31].

This retrospective study is limited by a small sample size, which makes it difficult to evaluate toxicity, particularly grade 1 and 2 toxicities, as these symptoms may not routinely be recorded by clinicians in daily clinical practice. Large randomized multi-institutional trials are needed to verify the effectiveness of EF-IMRT and concurrent chemotherapy for patients who had disease classified as FIGO stage IB2–IIIB. One strength of this study lies in the fact that seven patients experienced ovarian transposition before radiotherapy, and ovarian function was evaluated before and after EF-IMRT.

In conclusion, cisplatin chemotherapy with EF-IMRT for local advanced cervical cancer is safe and well-tolerated. The acute and late toxicities are acceptable. The locoregional control rates are promising and similar to those reported in previous studies, although distant metastases continue to be the

predominant mode of failure. EF-IMRT provides an opportunity to preserve endocrine function for patients with ovarian transposition.

#### CONFLICT OF INTEREST

No potential conflict of interest relevant to this article was reported.

#### ACKNOWLEDGMENTS

This work was supported by grants from the Natural Science Foundation of Shandong Province (Grant No. Y2007C069).

#### REFERENCES

1. Keys HM, Bundy BN, Stehman FB, Muderspach LI, Chafe WE, Suggs CL 3rd, et al. Cisplatin, radiation, and adjuvant hysterectomy compared with radiation and adjuvant hysterectomy for bulky stage IB cervical carcinoma. *N Engl J Med* 1999;340:1154-61.
2. Lukka H, Hirte H, Fyles A, Thomas G, Elit L, Johnston M, et al. Concurrent cisplatin-based chemotherapy plus radiotherapy for cervical cancer: a meta-analysis. *Clin Oncol (R Coll Radiol)* 2002;14:203-12.
3. Morris M, Eifel PJ, Lu J, Grigsby PW, Levenback C, Stevens RE, et al. Pelvic radiation with concurrent chemotherapy compared with pelvic and para-aortic radiation for high-risk cervical cancer. *N Engl J Med* 1999;340:1137-43.
4. Grigsby PW, Siegel BA, Dehdashti F. Lymph node staging by positron emission tomography in patients with carcinoma of the cervix. *J Clin Oncol* 2001;19:3745-9.
5. Berman ML, Keys H, Creasman W, DiSaia P, Bundy B, Blessing J. Survival and patterns of recurrence in cervical cancer metastatic to periaortic lymph nodes (a Gynecologic Oncology Group study). *Gynecol Oncol* 1984;19:8-16.
6. Piver MS, Barlow JJ, Krishnamsetty R. Five-year survival (with no evidence of disease) in patients with biopsy-confirmed aortic node metastasis from cervical carcinoma. *Am J Obstet Gynecol* 1981;139:575-8.
7. Lovecchio JL, Averette HE, Donato D, Bell J. 5-year survival of patients with periaortic nodal metastases in clinical stage IB and IIA cervical carcinoma. *Gynecol Oncol* 1989;34:43-5.
8. Nori D, Valentine E, Hilaris BS. The role of paraaortic node irradiation in the treatment of cancer of the cervix. *Int J Radiat Oncol Biol Phys* 1985;11:1469-73.
9. Rotman M, Pajak TF, Choi K, Clery M, Marcial V, Grigsby PW, et al. Prophylactic extended-field irradiation of para-aortic lymph

- nodes in stages IIB and bulky IB and IIA cervical carcinomas: ten-year treatment results of RTOG 79-20. *JAMA* 1995;274:387-93.
10. Eifel PJ, Winter K, Morris M, Levenback C, Grigsby PW, Cooper J, et al. Pelvic irradiation with concurrent chemotherapy versus pelvic and para-aortic irradiation for high-risk cervical cancer: an update of radiation therapy oncology group trial (RTOG) 90-01. *J Clin Oncol* 2004;22:872-80.
  11. Grigsby PW, Heydon K, Mutch DG, Kim RY, Eifel P. Long-term follow-up of RTOG 92-10: cervical cancer with positive para-aortic lymph nodes. *Int J Radiat Oncol Biol Phys* 2001;51:982-7.
  12. Sood BM, Gorla GR, Garg M, Anderson PS, Fields AL, Runowicz CD, et al. Extended-field radiotherapy and high-dose-rate brachytherapy in carcinoma of the uterine cervix: clinical experience with and without concomitant chemotherapy. *Cancer* 2003;97:1781-8.
  13. Kim YS, Kim JH, Ahn SD, Lee SW, Shin SS, Nam JH, et al. High-dose extended-field irradiation and high-dose-rate brachytherapy with concurrent chemotherapy for cervical cancer with positive para-aortic lymph nodes. *Int J Radiat Oncol Biol Phys* 2009;74:1522-8.
  14. Jensen LG, Hasselle MD, Rose BS, Nath SK, Hasan Y, Scanderbeg DJ, et al. Outcomes for patients with cervical cancer treated with extended-field intensity-modulated radiation therapy and concurrent cisplatin. *Int J Gynecol Cancer* 2013;23:119-25.
  15. Portelance L, Chao KS, Grigsby PW, Bennet H, Low D. Intensity-modulated radiation therapy (IMRT) reduces small bowel, rectum, and bladder doses in patients with cervical cancer receiving pelvic and para-aortic irradiation. *Int J Radiat Oncol Biol Phys* 2001;51:261-6.
  16. Stryker JA, Mortel R. Survival following extended field irradiation in carcinoma of cervix metastatic to para-aortic lymph nodes. *Gynecol Oncol* 2000;79:399-405.
  17. Haie C, Pejovic MH, Gerbaulet A, Horiot JC, Pourquier H, Delouche J, et al. Is prophylactic para-aortic irradiation worthwhile in the treatment of advanced cervical carcinoma? Results of a controlled clinical trial of the EORTC radiotherapy group. *Radiother Oncol* 1988;11:101-12.
  18. Varia MA, Bundy BN, Deppe G, Mannel R, Averette HE, Rose PG, et al. Cervical carcinoma metastatic to para-aortic nodes: extended field radiation therapy with concomitant 5-fluorouracil and cisplatin chemotherapy: a Gynecologic Oncology Group study. *Int J Radiat Oncol Biol Phys* 1998;42:1015-23.
  19. Ring KL, Young JL, Dunlap NE, Andersen WA, Schneider BF. Extended-field radiation therapy with whole pelvis radiotherapy and cisplatin chemosensitization in the treatment of IB2-IIIb cervical carcinoma: a retrospective review. *Am J Obstet Gynecol* 2009;201:109.e1-6.
  20. Uno T, Mitsuhashi A, Isobe K, Yamamoto S, Kawakami H, Ueno N, et al. Concurrent daily cisplatin and extended-field radiation therapy for carcinoma of the cervix. *Int J Gynecol Cancer* 2008;18:80-4.
  21. Gerszten K, Colonello K, Heron DE, Lalonde RJ, Fitian ID, Comerici JT, et al. Feasibility of concurrent cisplatin and extended field radiation therapy (EFRT) using intensity-modulated radiotherapy (IMRT) for carcinoma of the cervix. *Gynecol Oncol* 2006;102:182-8.
  22. Lujan AE, Mundt AJ, Yamada SD, Rotmensch J, Roeske JC. Intensity-modulated radiotherapy as a means of reducing dose to bone marrow in gynecologic patients receiving whole pelvic radiotherapy. *Int J Radiat Oncol Biol Phys* 2003;57:516-21.
  23. Mell LK, Kochanski JD, Roeske JC, Haslam JJ, Mehta N, Yamada SD, et al. Dosimetric predictors of acute hematologic toxicity in cervical cancer patients treated with concurrent cisplatin and intensity-modulated pelvic radiotherapy. *Int J Radiat Oncol Biol Phys* 2006;66:1356-65.
  24. Kodaira T, Fuwa N, Nakanishi T, Tachibana H, Nakamura T, Tomita N, et al. Prospective study of alternating chemoradiotherapy consisting of extended-field dynamic conformational radiotherapy and systemic chemotherapy using 5-FU and nedaplatin for patients in high-risk group with cervical carcinoma. *Int J Radiat Oncol Biol Phys* 2009;73:251-8.
  25. Chung YL, Jian JJ, Cheng SH, Hsieh CI, Tan TD, Chang HJ, et al. Extended-field radiotherapy and high-dose-rate brachytherapy with concurrent and adjuvant cisplatin-based chemotherapy for locally advanced cervical cancer: a phase I/II study. *Gynecol Oncol* 2005;97:126-35.
  26. Malfetano JH, Keys H, Cunningham MJ, Gibbons S, Ambros R. Extended field radiation and cisplatin for stage IIB and IIIB cervical carcinoma. *Gynecol Oncol* 1997;67:203-7.
  27. Chen SW, Liang JA, Hung YC, Yeh LS, Chang WC, Lin WC, et al. Concurrent weekly cisplatin plus external beam radiotherapy and high-dose rate brachytherapy for advanced cervical cancer: a control cohort comparison with radiation alone on treatment outcome and complications. *Int J Radiat Oncol Biol Phys* 2006;66:1370-7.
  28. Beriwal S, Gan GN, Heron DE, Selvaraj RN, Kim H, Lalonde R, et al. Early clinical outcome with concurrent chemotherapy and extended-field, intensity-modulated radiotherapy for cervical cancer. *Int J Radiat Oncol Biol Phys* 2007;68:166-71.
  29. Morice P, Castaigne D, Haie-Meder C, Pautier P, El Hassan J, Duvillard P, et al. Laparoscopic ovarian transposition for pelvic malignancies: indications and functional outcomes. *Fertil Steril* 1998;70:956-60.
  30. Bidzinski M, Lemieszczuk B, Zielinski J. Evaluation of the hormonal function and features of the ultrasound picture of transposed ovary in cervical cancer patients after surgery and pelvic irradiation. *Eur J Gynaecol Oncol* 1993;14 Suppl:77-80.
  31. Morice P, Juncker L, Rey A, El-Hassan J, Haie-Meder C, Castaigne D. Ovarian transposition for patients with cervical carcinoma treated by radiosurgical combination. *Fertil Steril* 2000;74:743-8.