

Research Article

Radiological Staging of Thyroid-Associated Ophthalmopathy: Comparison of T1 Mapping with Conventional MRI

Lu Chen ¹, Wen Chen ¹, Huan-Huan Chen ², Qian Wu ¹, Xiao-Quan Xu ¹,
Hao Hu ¹ and Fei-Yun Wu ¹

¹Department of Radiology, The First Affiliated Hospital of Nanjing Medical University, Nanjing, China

²Department of Endocrinology, The First Affiliated Hospital of Nanjing Medical University, Nanjing, China

Correspondence should be addressed to Hao Hu; haohu_njmu@foxmail.com and Fei-Yun Wu; wfy_njmu@163.com

Received 6 June 2020; Revised 3 October 2020; Accepted 5 October 2020; Published 22 October 2020

Academic Editor: Henrik Falhammar

Copyright © 2020 Lu Chen et al. This is an open access article distributed under the Creative Commons Attribution License, which permits unrestricted use, distribution, and reproduction in any medium, provided the original work is properly cited.

Background. Accurate staging of patients with thyroid-associated ophthalmopathy (TAO) is crucial for clinical decision. Full cognition of pathologic changes and staging TAO using conventional T2-weighted imaging is still limited. **Purpose.** To investigate the feasibility of using T1 mapping to evaluate changes of extraocular muscles (EOMs) in TAO patients, as well as to compare T1 mapping and conventional T2-weighted imaging in staging TAO. **Materials and Methods.** Forty TAO patients were retrospectively enrolled. “Hot spot” and “cold spot” T1 relaxation times (T1RT_{HS} and T1RT_{CS}) of EOMs, as well as conventionally applied highest signal intensity ratio (SIR) of EOMs, were measured and compared between active and inactive groups. **Results.** T1RT_{CS} and SIR were significantly higher in active TAOs than in the inactive ones ($P < 0.001$), while T1RT_{HS} was not ($P = 0.093$). Meanwhile, T1RT_{CS} and SIR were positively correlated with clinical activity score ($r = 0.489, 0.540; P < 0.001$). T1RT_{CS} and SIR showed no significant area under curve for staging TAO (0.830 vs. 0.852; $P = 0.748$). T1RT_{CS} ≥ 1000 alone showed optimal staging specificity (90.0%), while integration of T1RT_{CS} ≥ 1000 and SIR ≥ 2.9 demonstrated optimal staging efficiency and sensitivity (area under curve, 0.900; sensitivity, 86.0%). **Conclusions.** Our findings suggest that the T1-mapping technique holds the potency to be utilized in TAO. The derived T1RT_{CS} of EOMs, which may be associated with fat infiltration, could be a useful biomarker to stage the disease, serving added efficiency, sensitivity, and specificity to single usage of conventional SIR.

1. Introduction

Thyroid-associated ophthalmopathy (TAO), also known as Graves’ ophthalmopathy, is a debilitating autoimmune inflammatory disease [1, 2]. Remodeling of the orbit and upper face usually leads to series of complaints, including photophobia, grittiness, proptosis, eyelid retracting, and even vision loss [1–5]. The course of the disease can be divided into two distinct phases: active inflammation and inactive fibrosis [6]. Patients in the initially active phase is featured with mononuclear cell infiltration and edema of the orbital tissues, manifesting as redness and swelling of the eyelids and conjunctiva [2–4], and can benefit from treatments such as steroids, radiotherapy, and cyclosporine [7]. Those in the subsequently inactive phase are characterized by interstitial fibrosis, collagen deposition, and fat infiltration, with

surgical decompression being the only solution [8–10]. Thus, accurate discrimination of the two phases is of significant importance in clinical practice since timely and precise treatment would facilitate efficient improvement of the disease, relieve the complaints, and limit the progression to chronic fibrotic sequelae [11].

Given the high resolution of soft tissues and absence of ionizing radiation, magnetic resonance imaging (MRI) has been increasingly applied for diagnosing and further staging patients with TAO [12, 13]. Both diameters and signal intensity ratios (SIRs) of orbital tissues have been reported to help diagnosis of TAO, while regarding staging the disease [12, 14–16], the signal intensity ratio (SIR) of extraocular muscles (EOMs) generated from fat-suppressed (FS) T2-weighted imaging (T2WI) is currently the most recognized biomarker [12, 14, 15]. However, the semiquantitative

measurement of SIR, varied depending on the choice of referenced denominators, may confine the cognition of more detailed pathologic information within tissues and subsequently reduce the staging performance [17–19].

T1-mapping technology can detect tissue relaxation value in vivo and reflect different tissue properties non-invasively [20–23]. Previously, the technique has already been applied to assess various pathophysiological processes, such as chronic myocardial infarction, liver cirrhosis, renal fibrosis, and osteoarthritis [20–24], due to the superior ability of quantifying tissue characteristics of edema, fibrosis, and fat infiltration. However, concerning the utilization in orbit, knowledge is still finite [23, 24]. We suspected that the similar histopathologic changes of orbital tissues in TAO could also be detected by T1RT derived from T1 mapping, thus potentially assisting in discriminating disease phases.

Therefore, concerning the novel application of the T1-mapping technique in orbit, the aim of the present study was to explore the feasibility of using the technique to assess changes of EOMs in patients with TAO, meanwhile, to compare T1 mapping and conventional MRI in staging TAO.

2. Materials and Methods

2.1. Patients. This study was approved by our institutional review board, and written informed consent was waived due to its retrospective nature. From April 2019 to May 2020, 40 consecutive patients (mean age, 42.9 ± 14.5 years; male/female ratio, 16/24) with clinically diagnosed TAO using Bartley's criteria [25] were enrolled. The inclusion criteria included (1) both coronal T1 mapping and coronal T2WI with fat suppression were scanned before treatment; (2) image quality was adequate for further analysis; (3) no history of radiotherapy or surgical decompression; and (4) no other orbital pathologies.

Disease activity was determined for each eye according to the modified seven-point clinical activity score (CAS): spontaneous retrobulbar pain, pain on attempted up or down gaze, redness of the eyelids, redness of the conjunctiva, swelling of the eyelids, inflammation of the caruncle, and/or plica and conjunctival edema [25]. A CAS ≥ 3 was defined as active TAO, otherwise inactive. Finally, a total of 50 eyes were classified as active and 30 eyes as inactive.

2.2. MR Protocol. All the participants were scanned using a 3.0 T MRI system (MAGNETOM Skyra, Siemens Healthcare, Erlangen, Germany) with a 20-channel head coil. Each participant was instructed to lie still in the supine position and look at a fixed site with both eyes closed in order to reduce eye movement. Coronal T1 mapping was obtained by using a dual-flip angle-based fast spin-echo sequence. The parameters were as follows: repetition time/echo time, 4.96/1.81 ms; flip angle₁/flip angle₂, 2°/10°; field of view, 20 cm; slice thickness, 4.0 mm; and slice, 20. The scan time for T1 mapping was one minute and 11 seconds. Conventional structural imaging protocols included axial T1-weighted imaging (repetition time/echo time, 635/6.7 ms) and axial,

coronal, and sagittal T2WI with fat suppression (repetition time/echo time, 4000/75–117 ms). The other parameters for coronal T2WI with fat suppression were as follows: field of view, 18 cm; slice thickness, 3.5 mm; and slices, 18.

2.3. Image Analysis. Imaging data of coronal T1 mapping and coronal T2WI with fat suppression were evaluated by applying a standalone platform (syngo.via, Siemens Healthcare, Erlangen, Germany). Quantitative measurements over four EOMs, including superior, inferior, medial, and lateral recti were performed in each unit of eye. On the T1-mapping image, two circular ROIs (measuring 5–10 mm²) were manually drawn in the area with the highest and lowest degree of signal intensity (SI) over four EOMs observed by the naked eye, representing “hot spot” (HS) and “cold spot” (CS), respectively (Figure 1(a)). Once the regions of interest were determined, the mean values of T1RT_{HS} and T1RT_{CS} were automatically generated and recorded. Meanwhile, two similar-sized regions of interest were manually placed in the area of the most inflamed EOM with the highest SI as well as ipsilateral temporal muscle on T2WI with fat suppression (Figure 1(b)). Then, the SIR value was calculated by using the formula: $SI_{EOM}/SI_{ipsilateral\ temporal\ muscle}$ [26].

Two independent radiologists (observer 1: with 9 years of experience in head and neck radiology and observer 2: with 4 years of experience in head and neck radiology), who were blinded to study design, acquisition parameters, and clinical information, independently placed the regions of interest. The measurement results of these two observers were used to assess the interobserver agreement, and the measurement was repeated by observer 1 with a washout period of at least 1 month, in order to evaluate the intraobserver reproducibility.

2.4. Statistical Analysis. All numeric data were averaged and reported as mean \pm standard deviation. Kolmogorov–Smirnov test was used for analyzing the normality. Clinical variables (e.g., sex, age, smoking history, and CAS) were collected and compared between active and inactive groups. The differences of T1RT_{HS} and T1RT_{CS} between active and inactive TAOs were compared using Mann–Whitney *U* test. Independent sample *t*-test was applied for the comparison of SIR between two groups. The spearman correlation was used to identify the correlations between significant MRI parameters and CAS. Analyses of receiver operating characteristic (ROC) curves were performed to evaluate the staging performance of significant parameters. Comparisons of multiple ROC curves according to DeLong et al. [27] were used to compare the diagnostic performances between different techniques.

Inter- and intraobserver agreements of quantitative parameters were assessed by the intraclass correlation coefficient (ICC). The ICC values range between 0 and 1.00, and values closer to 1.00 represent better reproducibility. They were interpreted as follows: <0.40, poor; 0.41–0.60, moderate; 0.61–0.80, good; and ≥ 0.81 , excellent. All statistical analyses were carried out with SPSS

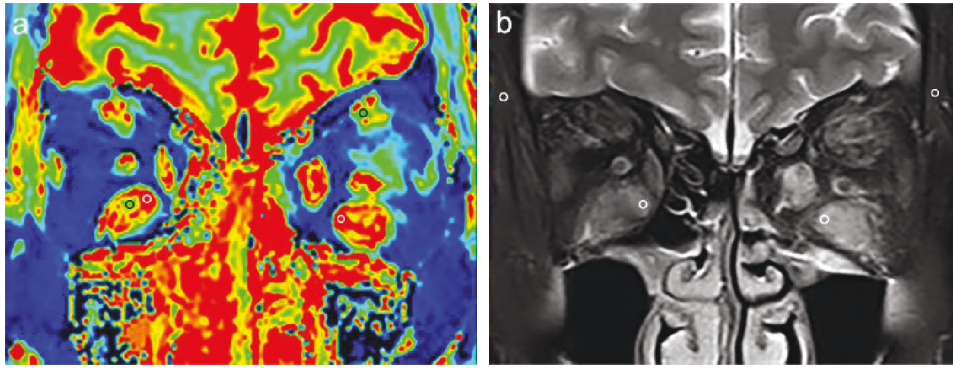


FIGURE 1: Methods for measurements of $T1RT_{HS}$, $T1RT_{CS}$, and SIR: coronal T1 mapping (a) and coronal fat-suppressed T2-weighted imaging (b) in a 52-year-old male with active TAO. Two circular regions of interest measuring 5–10 mm² were placed in the area with the highest (white) and lowest (black) signal intensity by naked eye, representing $T1RT_{HS}$ and $T1RT_{CS}$, respectively (a). Meanwhile, two similar-sized regions of interest were manually placed in the area of the most inflamed EOM with the highest signal intensity as well as ipsilateral temporal muscle (b). $T1RT_{HS}$, $T1RT_{CS}$, and SIR values of the left/right eye were 2426/2006 ms, 1365/1422 ms, and 4.14/3.95, respectively. $T1RT$ = T1 relaxation time; HS = hot spot; CS = cold spot; SIR = signal intensity ratio; TAO = thyroid-associated ophthalmopathy.

software package (v. 23.0; IBM, Armonk, NY). A two-sided P value less than 0.05 was considered statistically significant.

3. Results

There were no significant differences on age (43.5 ± 13.5 vs. 41.9 ± 16.5 , $P = 0.586$), sex distribution (male/female, 10/14 vs. 6/10, $P = 0.792$), and smoking history (11/25 vs. 6/15, $P = 0.804$) between active and inactive TAOs. The CAS of the active group was significantly higher than that of the inactive group (3.9 ± 0.6 vs. 1.5 ± 0.5 , $P < 0.001$).

Both $T1RT_{CS}$ and SIR were significantly higher in active TAOs than inactive ones ($T1RT_{CS}$: 1063.72 ± 164.27 vs. 852.57 ± 165.45 , $P < 0.001$; SIR: 3.46 ± 0.74 vs. 2.46 ± 0.70 , $P < 0.001$), while $T1RT_{HS}$ was not (2369.02 ± 415.92 vs. 2539.47 ± 523.44 , $P = 0.093$) (Figure 2). $T1RT_{CS}$ and SIR were positively correlated with CAS ($r = 0.489$, 0.540 ; $P < 0.001$). Good to excellent intra- and interobserver reproducibility were obtained during the measurements of $T1RT_{HS}$, $T1RT_{CS}$, and SIR (ICC ranging from 0.745 to 0.911).

Detailed ROC analyses results are displayed in Table 1. Setting cutoff values of 1000 for $T1RT_{CS}$ or 2.9 for SIR, respectively, optimal discriminating efficiency between active and inactive TAOs of single variable was obtained, without significance in area under curve (0.830 vs. 0.852, $P = 0.748$). $T1RT_{CS} \geq 1000$ alone showed optimal staging specificity (90.0%). When combining $T1RT_{CS} \geq 1000$ and SIR ≥ 2.9 , optimal staging efficiency and sensitivity could be achieved (area under curve, 0.900; sensitivity, 86.0%) (Figure 3). Two representative cases of active and inactive TAOs are presented in Figure 4.

4. Discussion

T1-mapping technique has been increasingly employed to assess various diseases, whereas the data regarding its application in orbital diseases are still lacking. Considering the

clinical significance for accurate staging TAO, we innovatively measured both $T1RT_{HS}$ and $T1RT_{CS}$ in this study, in order to acquire exhaustive information of the microstructural change within involved EOMs, as well as full demonstration of the competence of the technique in discriminating TAO phases. Our results proved the potency of T1-mapping technique in characterizing changes of orbital tissues, and in particular, they highlighted the usefulness of $T1RT_{CS}$ in improving staging performance of TAO.

We discovered that $T1RT_{CS}$, representing the lowest SI on T1 mapping in EOMs, was significantly higher in active TAO patients than the inactive ones. Previously, Bouazizi K et al. declared that fat infiltration in myocardium presented lower SI on T1 mapping with reduced $T1RT$ [28]. In the domain of orbit, the only related study focused on refractory diplopia also suggested that low $T1RT$ in EOMs, probably associated with fat infiltration, may be useful to predict response to intravenous glucocorticoid-resistant diplopia [24]. In accordance with prior findings, it is of no surprise that inactive TAOs in our cohort, with one of the main features being fat infiltration, would have lower $T1RT_{CS}$ than active ones. The positive correlation between $T1RT_{CS}$ and CAS further indicates that the degree of fat infiltration might increase accompanied with disease inactivity.

Referring to the other variables of $T1RT_{HS}$, which represent the highest SI on T1 mapping in EOMs, no significance was observed between groups. Native $T1RT$ is apt to increase both water content and fibrosis component [24, 29]. Thus, considering that $T1RT_{HS}$ in the active phase dominated by water and that in inactive mimics dominated by fibrosis would share high values, and the nonsignificant between-group result could be reasonable.

In this study, originally applied SIR of EOMs undoubtedly increased in the active TAO group, which is compatible with previous studies, connected with inflammatory change in tissues [12, 29, 30]. However, ROC curve results indicated that single application of SIR gained no

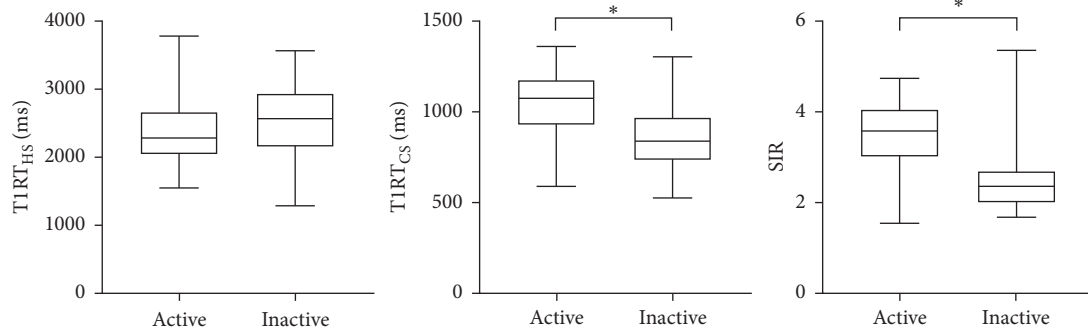


FIGURE 2: Box-plot showing the comparisons of T1RT values and SIR between groups. An asterisk indicates a significant difference ($*P < 0.001$).

TABLE 1: Discriminating performance of T1RT_{CS} and SIR between active and inactive TAOs.

Parameters	AUC	Cutoff	Sensitivity %	Specificity %
T1RT _{CS}	0.830 (0.732–0.928)	1000.00	72.0 (57.5–83.8)	90.0 (73.5–97.9)
SIR	0.852 (0.761–0.943)	2.90	80.0 (66.3–90.0)	83.3 (65.3–94.4)
T1RT _{CS} + SIR	0.900 (0.832–0.968)	—	86.0 (73.3–94.2)	83.3 (65.3–94.4)

The unit of T1RT_{CS} is ms. T1RT = T1 relaxation time; CS = cold spot; SIR = signal intensity ratio; TAO = thyroid-associated ophthalmopathy; AUC = area under curve.

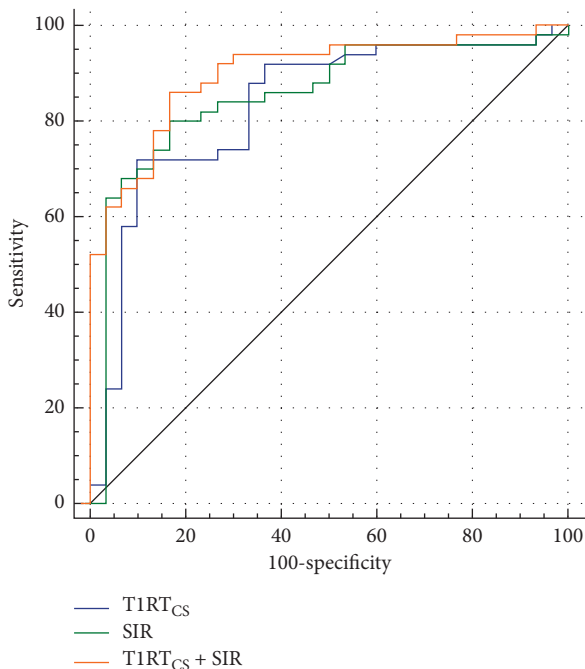


FIGURE 3: Receiver operating characteristic curves of significant parameters for staging TAO.

impressive staging sensitivity (80.0%) and specificity (83.3%). We found that T1 mapping could supply added staging performance to SIR alone. Using T1RT_{CS} alone could achieve optimal discriminating specificity (90.0%) between

active and inactive phases, and integration of T1RT_{CS} and SIR enabled improved discriminating efficiency (0.900) and sensitivity (86.0%).

Previously, most of the imaging studies focused on the pathological changes of inflammatory edema within EOMs using the T2WI-related technique [12, 14]. However, besides the inflammatory edema, fat infiltration was also a crucial pathological feature in the EOMs of TAO patients [24]. In the current study, we tried to use the T1-mapping technique to correspond with the potential change of fat infiltration, and positive results were obtained. New metrics associated with a new aspect of the pathological changes in the EOMs of TAO patients could provide additional information besides inflammatory edema, and naturally, the diagnostic performance was improved. Our study provided a novel and promising approach to improve the current discrimination level of disease phases and would build more confidence to clinicians in selecting individual treatment strategy.

Our study has several limitations. First, this is a retrospective study with relatively small sample size and hence may have a selection bias. The nonsignificant difference of T1RT_{HS} between the active and inactive groups might hold the potential to be influenced by the limited sample size. Therefore, a large sample study is suggested to be conducted to verify our results. Second, histological analysis of EOMs was difficult to be available. Therefore, exact pathological state of EOMs is still unclear. Future study clarifying the association between the imaging parameters and the pathological changes of EOMs would be more valuable. Third, only native T1RTs were measured. Furthermore, T1

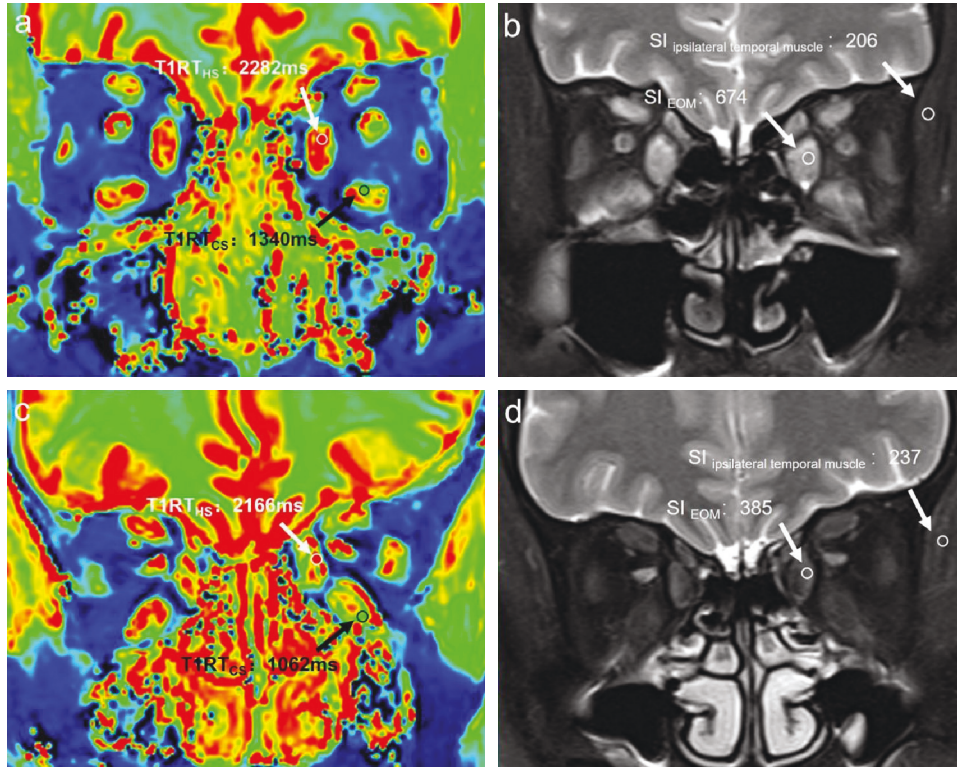


FIGURE 4: A 33-year-old male with active TAO (a, b) and a 54-year-old female with inactive TAO (c, d) were presented. Taken the left eye for example, the values of $T1RT_{HS}$, $T1RT_{CS}$, and SIR were 2282 ms, 1340 ms, and 3.27 for the patient with active TAO (a, b) and 2166 ms, 1062 ms, and 1.62 for the patient with inactive TAO, respectively (c, d).

mapping with gadolinium-enhancement may help discrimination of water and fibrosis contents, thus supplying more optimized staging performance.

In conclusion, our study indicated that the T1-mapping technique is potential to be generalized in assessing TAO. The derived $T1RT_{CS}$ of EOMs, probably associated with fat infiltration, may be a useful biomarker which could provide added performance to conventional SIR alone for staging TAO patients.

Data Availability

The data used to support the findings of this study are available from the corresponding author upon request.

Ethical Approval

Institutional Review Board approval was obtained.

Consent

Informed consent requirement was waived due to its retrospective study.

Conflicts of Interest

The authors declare that they have no conflicts of interest.

Authors' Contributions

Dr. Lu Chen, Wen Chen, and Huan-Huan Chen contributed equally to this work.

Acknowledgments

This work was supported by the National Natural Science Foundation of China (NSFC) (81801659 to Hao Hu) and "Thyroid Research Program of Young and Middle-aged Physicians" from China Health Promotion Foundation.

References

- [1] D. L. Kendler, J. Lippa, and J. Rootman, "The initial clinical characteristics of graves' orbitopathy vary with age and sex," *Archives of Ophthalmology*, vol. 111, no. 2, pp. 197–201, 1993.
- [2] L. Bartalena and M. L. Tanda, "Graves' ophthalmopathy," *New England Journal of Medicine*, vol. 360, no. 10, pp. 994–1001, 2009.
- [3] H. Parmar and M. Ibrahim, "Extrathyroidal manifestations of thyroid disease: thyroid ophthalmopathy," *Neuroimaging Clinics of North America*, vol. 18, no. 3, pp. 527–536, 2008.
- [4] E. Sahli and K. Gunduz, "Thyroid-associated ophthalmopathy," *Turkish Journal of Ophthalmology*, vol. 47, pp. 94–105, 2017.
- [5] J. P. Gilbard and R. L. Farris, "Ocular surface drying and tear film osmolarity in thyroid eye disease," *Acta Ophthalmologica*, vol. 61, no. 1, pp. 108–116, 1983.

- [6] F. F. Rundle and C. W. Wilson, "Development and course of exophthalmos and ophthalmoplegia in Graves' disease with special reference to the effect of thyroidectomy," *Clinical Science*, vol. 5, no. 3-4, pp. 177-194, 1945.
- [7] Z. Li, D. M. Cestari, and E. Fortin, "Thyroid eye disease," *Current Opinion in Ophthalmology*, vol. 29, no. 6, pp. 528-534, 2018.
- [8] Y. Hiromatsu, H. Eguchi, J. Tani, M. Kasaoka, and Y. Teshima, "Graves' ophthalmopathy: Epidemiology and natural history," *Internal Medicine*, vol. 53, no. 5, pp. 353-360, 2014.
- [9] D. J. Gould, F. S. Roth, and C. N. S. Soparkar, "The diagnosis and treatment of thyroid-associated ophthalmopathy," *Aesthetic Plastic Surgery*, vol. 36, no. 3, pp. 638-648, 2012.
- [10] K. G. Claridge, R. Ghabrial, G. Davis et al., "Combined radiotherapy and medical immunosuppression in the management of thyroid eye disease," *Eye*, vol. 11, no. 5, pp. 717-722, 1997.
- [11] R. K. Lingam, P. Mundada, and V. Lee, "Novel use of non-echo-planar diffusion weighted MRI in monitoring disease activity and treatment response in active Grave's orbitopathy: An initial observational cohort study," *Orbit*, vol. 37, no. 5, pp. 325-330, 2018.
- [12] E. J. Mayer, D. L. Fox, G. Herdman et al., "Signal intensity, clinical activity and cross-sectional areas on MRI scans in thyroid eye disease," *European Journal of Radiology*, vol. 56, no. 1, pp. 20-24, 2005.
- [13] F. J. Wippold, "Head and neck imaging: the role of CT and MRI," *Journal of Magnetic Resonance Imaging*, vol. 25, no. 3, pp. 453-465, 2007.
- [14] T. Higashiyama, M. Iwasa, and M. Ohji, "Quantitative analysis of inflammation in orbital fat of thyroid-associated ophthalmopathy using MRI signal intensity," *Scientific Reports*, vol. 4, 2017.
- [15] J. S. Byun, N. J. Moon, and J. K. Lee, "Quantitative analysis of orbital soft tissues on computed tomography to assess the activity of thyroid-associated orbitopathy," *Graefes Archive for Clinical and Experimental Ophthalmology*, vol. 255, no. 2, pp. 413-420, 2017.
- [16] T. Higashiyama, Y. Nishida, K. Morino et al., "Use of MRI signal intensity of extraocular muscles to evaluate methylprednisolone pulse therapy in thyroid-associated ophthalmopathy," *Japanese Journal of Ophthalmology*, vol. 59, no. 2, pp. 124-130, 2015.
- [17] H. Hu, X.-Q. Xu, F.-Y. WU et al., "Diagnosis and stage of Graves' ophthalmopathy: Efficacy of quantitative measurements of the lacrimal gland based on 3-T magnetic resonance imaging," *Experimental and Therapeutic Medicine*, vol. 12, no. 2, pp. 725-729, 2016.
- [18] T. Das, J. C. P. Roos, A. J. Patterson, M. J. Graves, and R. Murthy, "T2-relaxation mapping and fat fraction assessment to objectively quantify clinical activity in thyroid eye disease: an initial feasibility study," *Eye*, vol. 33, no. 2, pp. 235-243, 2019.
- [19] T. Fabio, P. Mariaevelina, C. Mario et al., "Diagnostic accuracy of short-time inversion recovery sequence in Graves' ophthalmopathy before and after prednisone treatment," *Neuroradiology*, vol. 56, pp. 353-361, 2014.
- [20] L. F. Juliano and E. R. Carlos, "T1 mapping technique and applications," *Magnetic Resonance Imaging Clinics of North America*, vol. 23, pp. 25-34, 2015.
- [21] A. D. Ilona and J. L. Hildo, "Clinical application and technical considerations of T1 & T2(*) mapping in cardiac, liver, and renal imaging," *The British Journal of Radiology*, vol. 91, Article ID 20170825, 2018.
- [22] Z. Min, Y. Chao, L. Lin et al., "Feasibility of dual flip angle-based fast 3-dimensional T1 mapping for delayed gadolinium-enhanced magnetic resonance imaging of cartilage of the knee: A histologically controlled study," *Journal of Computer Assisted Tomography*, vol. 40, pp. 442-446, 2016.
- [23] M. Junchao, X. Xiaotong, W. Shaoyu et al., "Quantitative assessment of early type 2 diabetic cataracts using T1, T2-mapping techniques," *The British Journal of Radiology*, vol. 92, no. 1103, p. 20181030, 2019.
- [24] M. Kazuhiko, I. Shoichiro, K. Ayumi et al., *Low Signal Intensities of MRI T1 Mapping Predict Refractory Diplopia in Graves' Ophthalmopathy*, pp. 536-544, Wiley, Hoboken, NJ, USA, 2020.
- [25] M. P. Mourits, M. F. Prummel, W. M. Wiersinga, and L. Koornneef, "Clinical activity score as a guide in the management of patients with Graves' ophthalmopathy," *Clinical Endocrinology*, vol. 47, no. 1, pp. 9-14, 1997.
- [26] E. C. Kirsch, A. H. Kaim, M. G. De Oliveira, and G. von Arx, "Correlation of signal intensity ratio on orbital MRI-TIRM and clinical activity score as a possible predictor of therapy response in Graves' orbitopathy-a pilot study at 1.5 T," *Neuroradiology*, vol. 52, no. 2, pp. 91-97, 2010.
- [27] E. R. DeLong, D. M. DeLong, and D. L. Clarke-Pearson, "Comparing the areas under two or more correlated receiver operating characteristic curves: a nonparametric approach," *Biometrics*, vol. 44, no. 3, pp. 837-845, 1988.
- [28] K. Bouazizi, A. Rahhal, S. Kusmia et al., "Differentiation and quantification of fibrosis, fat and fatty fibrosis in human left atrial myocardium using ex vivo MRI," *PLoS One*, vol. 13, Article ID e0205104, 2018.
- [29] I. Sillaire, "Graves' ophthalmopathy: usefulness of T2 weighted muscle signal intensity," *Journal of Radiology*, vol. 84, pp. 139-142, 2003.
- [30] M. F. Prummel, M. N. Gerding, F. W. Zonneveld, and W. M. Wiersinga, "The usefulness of quantitative orbital magnetic resonance imaging in Graves' ophthalmopathy," *Clinical Endocrinology*, vol. 54, no. 2, pp. 205-209, 2001.