

Available online at www.sciencedirect.com

ScienceDirect

journal homepage: www.elsevier.com/locate/radcr

Case Report

Sigmoid cancer mimicking ovarian echotexture on transvaginal ultrasound: Case report with literature review [☆]

Dawood Tafti, MD^{a,*}, Katherine Krause, MD^b, Rebecca Dillon, MD^a, Rebecca Flores, MD^a, Nathan D. Cecava, MD^{a,c,d}

^a Department of Radiology, Brooke Army Medical Center, 3551 Roger Brooke Drive, Fort Sam Houston, San Antonio, TX, 78234, USA

^b Department of Pathology, Brooke Army Medical Center, 3551 Roger Brooke Drive, Fort Sam Houston, San Antonio, TX, 78234, USA

^c Uniformed Services University of Health Sciences, 4301 Jones Bridge Rd, Bethesda, MD 20814, USA

^d Texas A&M School of Medicine, 8447 Riverside Pkwy, Bryan, TX 77807, USA

ARTICLE INFO

Article history:

Received 21 July 2020

Revised 15 September 2020

Accepted 20 September 2020

Key word:

Ovarian mimics

Transvaginal ultrasound

Ovarian malignancy

ABSTRACT

Ultrasound is a first line imaging modality for the evaluation of female pelvic pain. Pelvic pain constitutes one of the most common reasons for presentation to the emergency department with increasing use of point of care ultrasound. Infrequently, point of care or formal ultrasound evaluation may lead to misdiagnosis of extraovarian disease. This can have serious consequences, especially if an extraovarian malignancy is mistaken for a normal ovary or an ovary with a benign process. We present a case of a 41-year-old female who presented to the emergency department for a chief complaint of pelvic pain and vaginal bleeding. Transvaginal ultrasound demonstrated a left adnexal mass, later characterized as a sigmoid colon cancer on MRI and pathology, simulating ovarian echotexture with peripheral hypoechoic components resembling follicles. This article will review the literature of various cases of extraovarian pathology misidentified as ovarian processes and highlight the importance of considering these extraovarian mimickers to prevent potential morbidity and mortality of a missed diagnosis.

Published by Elsevier Inc. on behalf of University of Washington.

This is an open access article under the CC BY-NC-ND license

(<http://creativecommons.org/licenses/by-nc-nd/4.0/>)

Introduction

Gynecologic and obstetric applications of ultrasound originated in the 1950s and 1960s with further advances in

sonographic techniques and clinical use evolving by the 1970s [1]. The 1958 seminal paper by Donald et al. [2] explored the earliest application of ultrasound in the field of gynecologic and obstetric and included the first images of pelvic masses.

[☆] **DISCLAIMER:** The views expressed are those of the authors and do not reflect the official views or policy of the Department of Defense or its Components.

* Corresponding author. (D. Tafti)

E-mail address: dawood.a.tafti@mail.mil (D. Tafti).

<https://doi.org/10.1016/j.radcr.2020.09.041>

1930-0433/Published by Elsevier Inc. on behalf of University of Washington. This is an open access article under the CC BY-NC-ND license (<http://creativecommons.org/licenses/by-nc-nd/4.0/>)

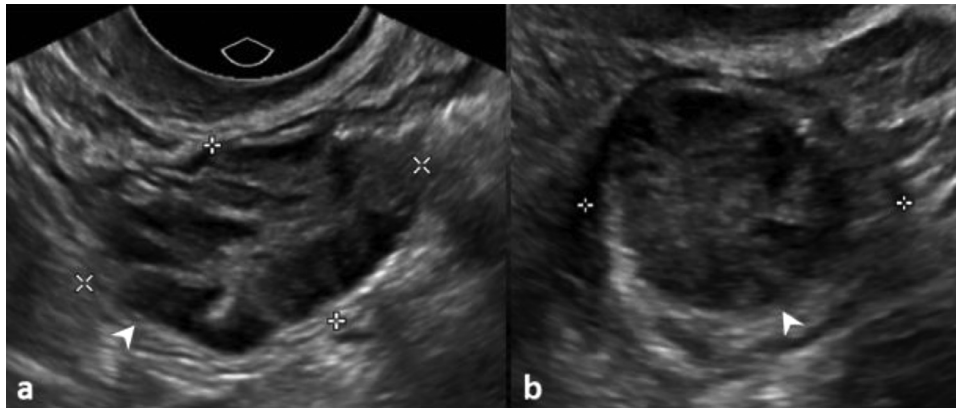


Fig. 1 – Forty one-year-old-woman undergoing evaluation of pelvic pain and vaginal bleeding. (A, B) Transvaginal ultrasound images demonstrate a left adnexal mass measuring up to 3.1 cm in greatest dimension. Peripheral hypoechoic components (arrowheads), left adnexal location, and oval shape overall could be misconstrued to represent a normal ovary. This mass was later proven to be a sigmoid colon adenocarcinoma.

Early indications for pelvic sonograms included evaluation of cystic and solid masses with subsequent incorporation of sonography for the evaluation of early pregnancy, ovarian malignancy, ascites, and nonpalpable pelvic masses [1]. The first transvaginal ultrasound probe was developed in the 1960s with the practical use of endovaginal sonographic techniques gaining ground with the development of real-time imaging in the 1970s [3–6]. The early 1990s saw the gradual introduction of endovaginal sonographic techniques into the general ultrasound pelvic exam with further studies in the 2000s exploring various pelvic pathologies through the use of transvaginal technique [3,7,8]. The clinical applications of transvaginal ultrasound have transformed the evaluation and management of acute and chronic pelvic pain in the primary care and subspecialty settings, including the emergency department (ED). Studies in the past 20 years evaluating the application of transvaginal ultrasound for pelvic pain have expanded the uses of sonographic exams while acknowledging its limitations [9–16]. We present a case of a colon cancer simulating ovarian echotexture, which could have been misinterpreted as a normal ovary and was correctly characterized on magnetic resonance imaging (MRI). Through literature review, the authors will discuss various pelvic pathologies arising within and outside the genital tract which can mimic a normal or abnormal ovary. Given the increasing prevalence of point of care transvaginal ultrasound among ED providers, we present this case as a teaching opportunity and also discuss the nonovarian differential considerations when evaluating an adnexal mass.

Case presentation

Presentation

A 41-year-old female presented to the ED for the evaluation of 10 days of sharp right lower quadrant and right hip pain radiating to her right lower extremity. She reported a gradual onset of pain without trauma or other known inciting events.

The patient noted irregular menstrual bleeding for several months prior to presentation, endorsing dysmenorrhea and metromenorrhea. Physical exam was significant for tenderness on palpation of the right lower quadrant without rebound tenderness or guarding. The patient's past medical and surgical history was significant for obesity, ruptured ectopic pregnancy status post bilateral salpingectomy, cesarean section, and appendectomy. She denied personal history of prior malignancy or a family history of gynecologic or gastrointestinal malignancy.

Imaging

Pelvic ultrasound performed at the radiology department during the ED visit showed an oval, heterogeneous hypoechoic and isoechoic, oval, solid mass in the left adnexa measuring 2.5 × 3.1 × 2.1 cm (Fig. 1). This mass demonstrated a frond-like internal architecture with a resultant artifactual appearance of hypoechoic ovarian follicles. Internal Doppler vascular flow was present in a branch-like pattern (Fig. 2). The sonographer presented the mass to the interpreting radiologist as a normal left ovary. The uterus and a 1.9 cm right ovary had a normal sonographic appearance. After a second review of the images, the radiologist identified a normal 3 cm left ovary separate from the mass originally identified as the left ovary. There was no free fluid in the pelvis.

The patient was referred for a follow-up contrast-enhanced MRI of the pelvis, which demonstrated a 3 cm mass arising from the wall of the sigmoid colon in the left lower abdomen (Fig. 3). The mass had isointense T1 signal to the adjacent bowel wall and slight T2 hyperintensity without abnormal enhancement. The ovaries had a normal appearance on MRI.

Colonoscopy and pathology

Subsequent colonoscopy demonstrated a 3 cm, pedunculated polyp within the sigmoid colon, as well as additional 2–6 mm polyps in the sigmoid and transverse colon (Fig. 4). All visu-

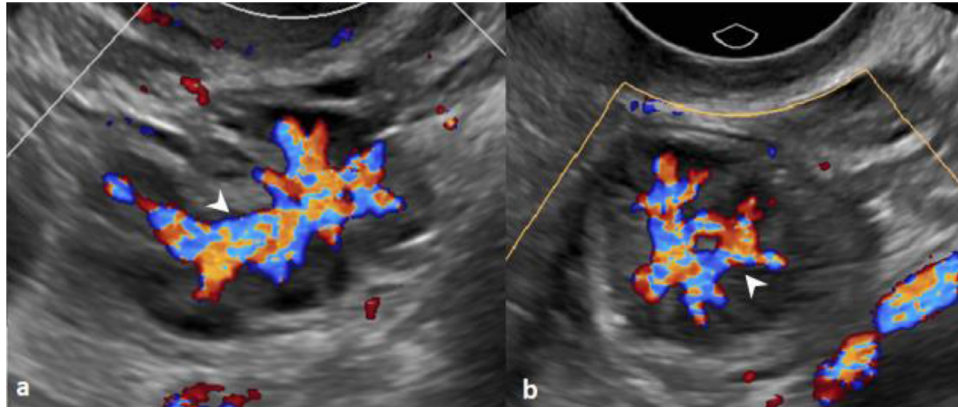


Fig. 2 – Forty one-year-old-woman undergoing evaluation of pelvic pain and vaginal bleeding. (A, B) Transvaginal Doppler sonographic images demonstrate a left adnexal mass with branching vascularity (arrowheads). This mass was later proven to be a sigmoid colon adenocarcinoma.

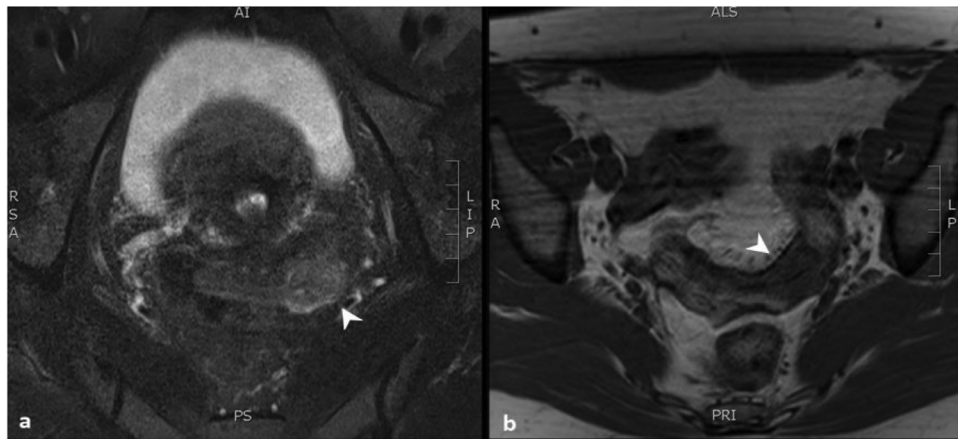


Fig. 3 – Forty one-year-old-woman undergoing evaluation of pelvic pain and vaginal bleeding. (A) Axial T2 MR image with fat saturation demonstrates a mildly hyperintense endoluminal sigmoid colon mass (arrowhead). (B) Axial T1 MR image demonstrates an intermediate intensity mass at the same location (arrowhead). This mass was later proven to be a sigmoid colon adenocarcinoma.

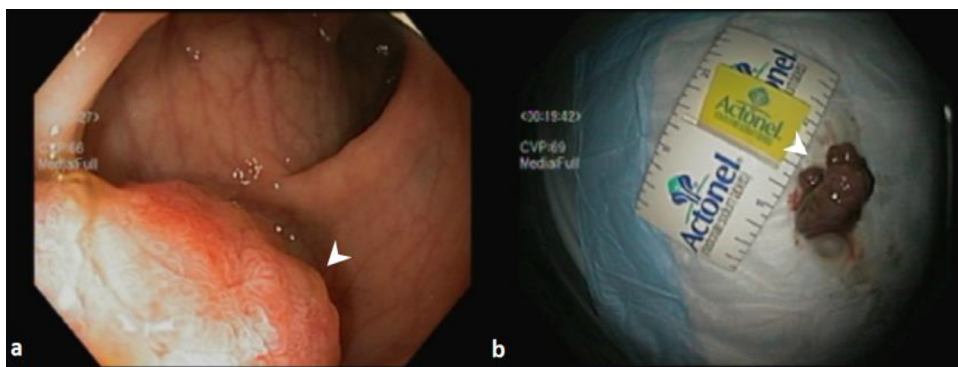


Fig. 4 – Forty one-year-old-woman undergoing colonoscopy for a sigmoid colon mass. (A) An endoscopic photo shows a polypoid mass arising from the sigmoid colon wall (arrowhead). (B) A gross specimen photo shows the mass after after snare biopsy and resection (arrowhead).

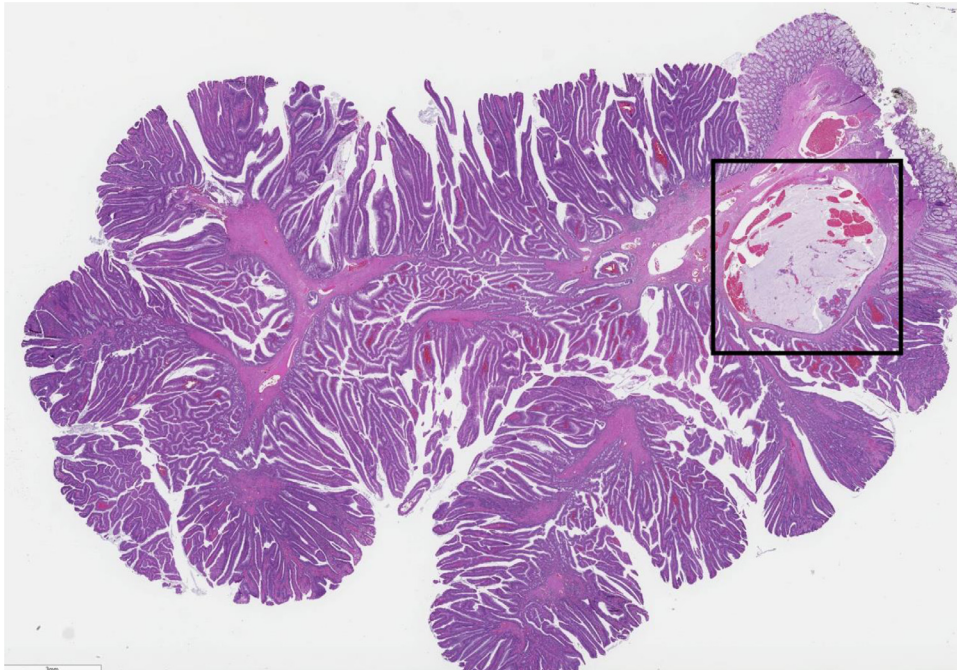


Fig. 5 – Low power view of pedunculated polyp demonstrating its overall villous architecture and mucin lake (within box).



Fig. 6 – Representative image of the villous adenoma with diffuse, low-grade dysplasia characterized by hyperchromatic, elongated nuclei in a pseudostratified arrangement.

alized polyps were removed during the colonoscopy via hot snare polypectomy. There were no complications.

On histologic analysis, the 3 cm sigmoid polyp revealed a villous morphology with extensive low-grade dysplasia and a focal mucin lake. The mucin lake contained free-floating strips and fragments of epithelium, yielding a diagnosis of

adenocarcinoma arising in a villous adenoma (Figs. 5 and 6). The malignant epithelial fragments had a cribriform architecture, but were otherwise deceptively bland (Fig. 7). The remaining polyps were all tubular adenomas. The patient's young age and the presence of multiple tubular adenomas prompted consideration for an inherited condition such as

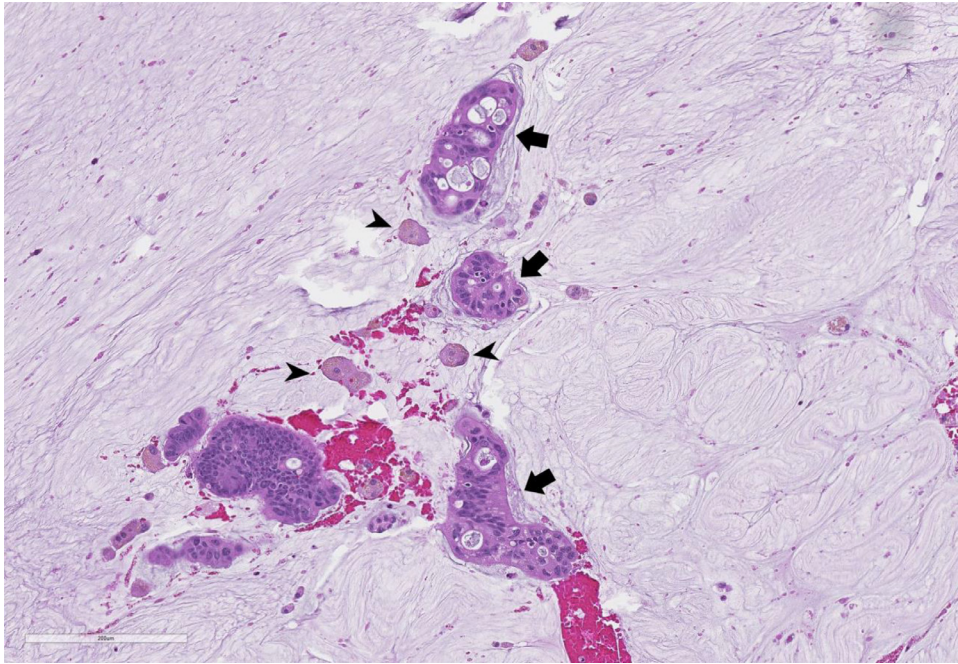


Fig. 7 – High power view of mucin lake with floating malignant epithelium (arrows) and macrophages (arrowheads). The epithelial fragments demonstrate cribriform architecture and minimal cytologic atypia.

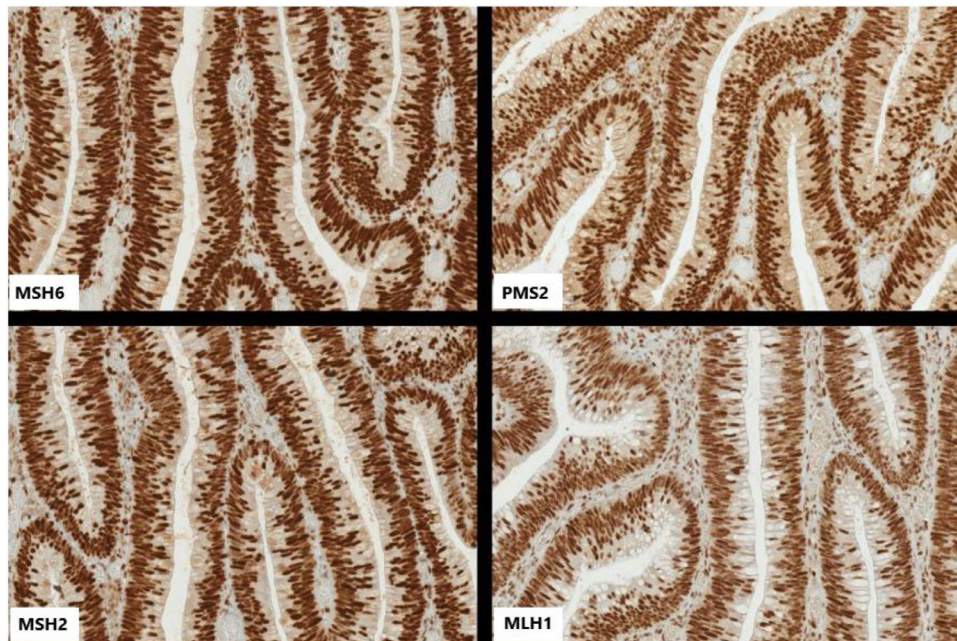


Fig. 8 – Composite image exhibiting nuclear positivity for each tested protein (MSH6, PMS2, MLH2, and MSH1) of mismatch repair via immunohistochemistry.

Lynch syndrome. Microsatellite instability testing via immunohistochemistry of the malignant polyp revealed retained protein expression of MLH1, PMS2, MSH2, and MSH6 (Fig. 8). Genetic testing was subsequently performed, and was negative for the MLH1, PMS2, MSH2, MSH6, and EPCAM muta-

tions of Lynch syndrome. Additionally, no MUTYH mutations were found, excluding the possibility of MutYH-associated polyposis.

CT chest/abdomen/pelvis was negative for metastatic disease. Subsequent sigmoidoscopies, including biopsies at the

Table 1 – Cases of ovarian mimics secondary to infectious etiologies.

| | Number of cases | Diagnosis |
|-----------------------|-----------------|---|
| Ertas et al. [50] | 26 | Tuberculosis (15), echinococcosis (6), or actinomycosis (5) |
| Rabesalam et al. [69] | 1 | Ovarian tuberculosis |
| Akhtar et al. [50] | 1 | Genital tuberculosis |
| Ellis et al. [51] | 1 | Coccidiomycosis |
| Drayer et al. [54] | 2 | Peritoneal tuberculosis(1) and schistosomiasis(1) |
| Paun et al. [55] | 3 | Peritoneal tuberculosis(1) |
| Barroso et al [58] | 1 | Dovanosis |
| Stout et al. [60] | 1 | Mycobacterium bovis peritonitis |
| Gojayev et al. [61] | 1 | Chlamydia peritonitis |
| Yazici et al. [70] | 1 | Liver fluke |

Table 2 – Gynecologic mimics of ovarian malignancy.

| | Cases(n) | Diagnosis |
|---------------------|----------|-------------------------------|
| Su et al. [56] | 1 | Ovarian pregnancy |
| Chen et al. [59] | 1 | Pyomyoma |
| Salman et al. [62] | 1 | Broad ligament lipoleiomyoma |
| Yadav et al. [63] | 2 | Broad ligament lipoleiomyoma |
| Agarwal et al. [64] | 1 | Broad ligament lipomyosarcoma |

site of prior disease, have all been negative for dysplasia or malignancy. The patient is now 4 years out from her initial diagnosis without evidence of recurrent or metastatic disease.

Discussion

The prevalence of chronic pelvic pain has been extensively studied [17–24]. One early study demonstrated a 3-month prevalence of 15% amongst women aged 18–50 and with other literature reporting prevalence as high as 27% [17]. Common non-neoplastic causes of chronic pelvic pain include ovarian cysts, endometriosis, pelvic inflammatory disease, pelvic congestion syndrome, and interstitial cystitis [25–31]. Nongynecologic causes include gastrointestinal and genitourinary disorders while sometimes psychosomatic factors are contributory [32–34]. Acute pelvic pain differs in time course but may have similar physical exam findings to chronic pelvic pain. Acute causes also include ectopic pregnancy, ovarian torsion, ruptured ovarian cyst, and appendicitis [35,36]. Due to the high volume of patients presenting for pelvic pain, transvaginal point of care ultrasound for ED physicians has been a source of ongoing discussion and research [37,38,41]. Nonradiologists performing ultrasound may be more focused on the uterus and ovaries as typical sources of pelvic pain and may incorrectly assign abnormal pelvic ultrasound findings to the reproductive organs. Recent studies have highlighted nonovarian pathology can be mis-assigned to the ovary on transvaginal ultrasound [39,40,42].

The accuracy and limitations of pelvic ultrasound differ amongst pelvic pain etiologies. For example, ultrasound is helpful in evaluation of ovarian torsion, but more limited in diagnosing conditions such as endometriosis [43–47]. Non-

ovarian pathologies or atypical ovarian conditions can mimic normal ovarian anatomy or benign ovarian processes and are a potential cause of perceptual error for clinicians and radiologists [48]. The intrinsic poor contrast and limited field of view of transvaginal ultrasound when compared to CT and MRI further subject ultrasound to adnexal evaluation pitfalls [49]. Pelvic MRI with contrast and sometimes CT are necessary adjuncts to characterize adnexal masses.

Infections, inflammatory processes, or iatrogenic materials located in the peritoneum or the ovary itself may result in misdiagnosis during adnexal ultrasound evaluation. Numerous case series and case reports have described components of infection that appear similar to ovarian cysts or malignancies. Peritoneal and genital tuberculosis remains one of the most common mimickers of ovarian malignancy amongst infectious etiologies in endemic countries (Table 1). A single retrospective study evaluating 113 patients with extraovarian disease mimicking ovarian cancer showed peritoneal tuberculosis to represent the most common etiology overall [72]. Nonabsorbable suture and surgical granulomas have also been reported to mimic ovarian cancer [65,66]. Extraovarian genital tract pathologies constitute the most common mimics of the ovaries. Fallopian tube pathology, paraovarian/peritoneal inclusion cysts, and pedunculated uterine fibroids may all be mistaken for ovaries on ultrasound [73]. Other infrequent genital tract processes include infected or malignant degeneration of pedunculated fibroids involving the broad ligament (Table 2).

Nongynecologic processes to include malignancies have also been shown to mimic ovarian masses (Table 3). There is now considerable literature detailing various non-gynecologic findings incidentally found on transvaginal ultrasound (Table 4). Amongst non-gynecologic neoplasms, appendiceal mucoceles have been frequently discovered on transvaginal ultrasound due to their close location to the right adnexa. Jansen et al. [82] described typical mucocele appearance as para-ovarian unilocular tubular masses with internal contents resembling “whipped cream.” Visualization of small intestine and colon neoplasms is uncommon with transvaginal ultrasound, however depending on location, tumor size, and paucity of bowel gas, these neoplasms may be discovered by a trained operator [95]. Transvaginal and intrarectal ultrasound also has an important role in the evaluation of rectovaginal space infiltration in the evaluation of rectal cancer

Table 3 – Cases of ovarian mimics secondary to various nongynecologic malignant etiologies.

| | Number of cases | Diagnosis |
|----------------------|-----------------|---|
| Gehrig et al. [52] | 5 | Appendiceal adenocarcinoma |
| Merino et al. [53] | 7 | Malignant mesothelioma |
| Paun et al. [55] | 3 | Primary peritoneal carcinoma(1) and benign adnexal mass (1) |
| Mani et al. [56] | 7 | Multicystic mesothelioma(4), malignant mesothelioma(3) |
| Pietzner et al. [57] | 1 | Melanoma |
| Eulitt et al. [67] | 1 | Waldenstrom's macroglobulinemia |
| Struver et al. [68] | 1 | Multiple myeloma |
| Bland et al. [71] | 1 | Desmoplastic small round blue cell |

Table 4 – Nongynecologic findings on transvaginal ultrasound described in the literature.

| Diagnosis | Source |
|---|---|
| Appendiceal mucocele | Malave et al. [74], Ferdinand Sanchez et al. [75], Gehrig et al. [52], Pitiakoudis et al. [76], Kalu et al. [77], Papoutsis et al. [78], Balci et al. [79], Kanasugi et al. [80], Souei-Mhiri et al. [81] |
| Other neoplasms(rectal, bladder, colon, lymphoma) | Damani et al. [95], Dhamanaskar et al. [86], Berdov et al. [96], Bennacerraf et al. [97] |
| Appendicitis | Ohngemach et al. [41], Al-Roubaie et al. [90], Caspi et al. [91], Scinaeux et al. [92], Pelsang et al. [93], Whitford et al. [94] |
| Diverticulitis | Ohngemach et al. [41], Pradel et al. [85], Zielke et al. [87], Wilson et al. [89] |
| Obstructing ureteral stone | Ohngemach et al. [41], Laing et al. [83], Damani et al. [95] |
| Pelvic kidney | Ohngemach et al. [41], Sherer et al. [84] |
| Enteritis | Ohngemach et al. [41] |
| Small bowel obstruction | Ohngemach et al. [41] |
| Thrombosis(Common femoral vein and uterine vein) | Ohngemach et al. [41], Mavrelou et al. [98] |
| Epiploic appendagitis | Savage et al. [88] |
| Crohn disease | Damani et al. [95] |

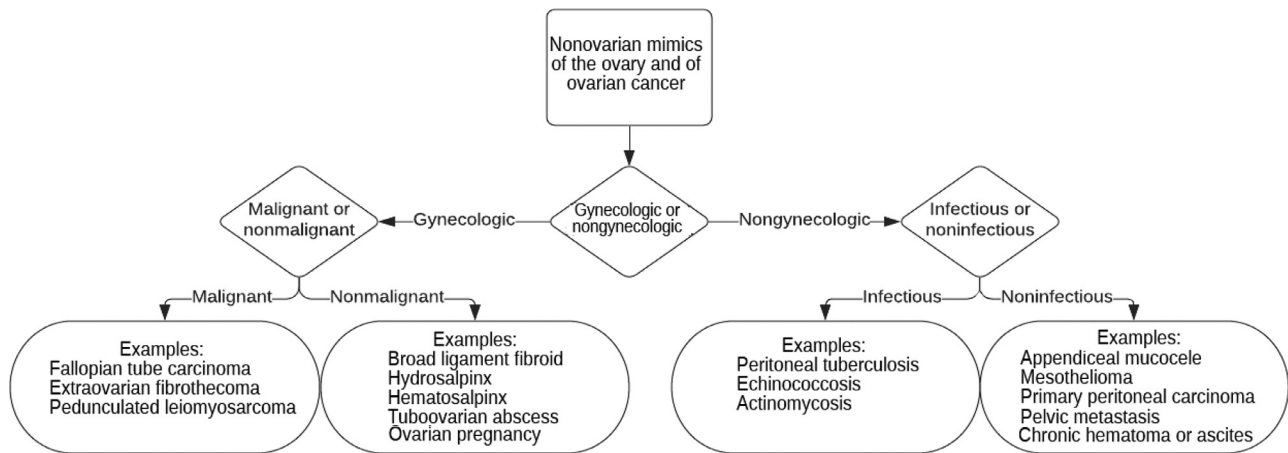


Fig. 9 – A flowchart illustrating differential considerations for extraovarian adnexal mass.

[96,99–101]. Peritoneal mesothelioma can be a masquerader of ovarian carcinomatosis as well as other peritoneal processes which can simulate primary ovarian disease.

A flowchart to arrive at a reasonable differential diagnosis for an extraovarian adnexal mass is shown in Fig. 9. One should first consider whether genital tract or non-genital tract etiologies are more likely. Then, a further division can occur in categories such as infectious vs noninfectious and malignant

versus nonmalignant etiologies based on clinical presentation and patient risk factors. Considering this simple schema when evaluating an adnexal mass on transvaginal ultrasound can assist in identifying the need for further imaging, tissue sampling, and treatment.

Regarding the present case with a mass arising from the enteric tract, differential considerations include adenocarcinoma, lymphoma, and metastasis. On transvaginal ultra-

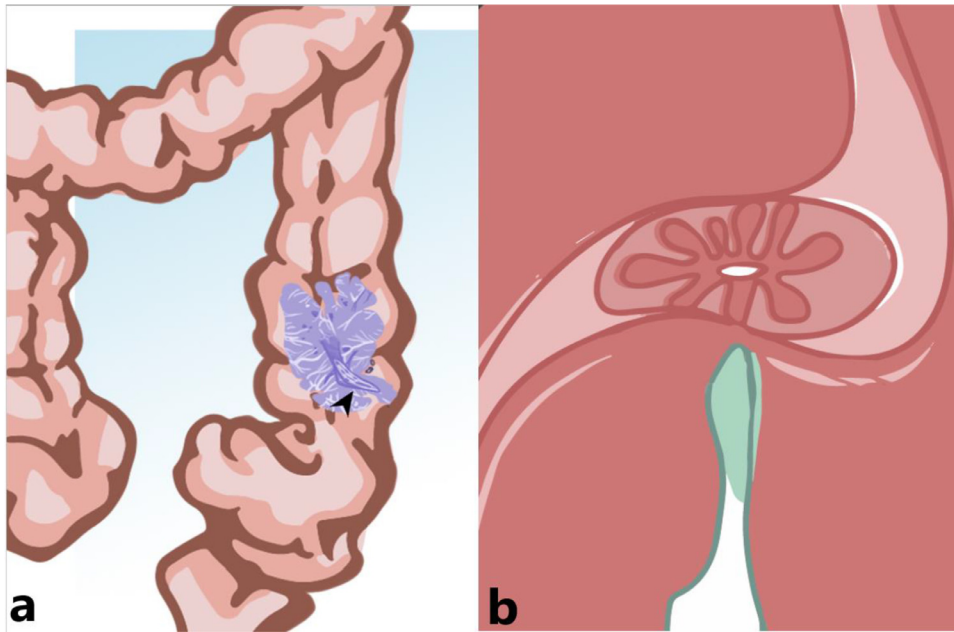


Fig. 10 – (A) An illustration demonstrating a colon mass with a tubulovillous morphology and a stalk (black arrowhead). (B) A simplified illustration demonstrating a tubulovillous malignancy of the colon collapsing during application of pressure with a transvaginal probe. (Illustration courtesy of Alana Drummond).

sound, bowel wall tumors are often solid, localized, and round [95]. Malignant lesions can be hypoechoic or heterogeneous in echogenicity. Colonic adenocarcinoma can also demonstrate a pseudokidney or targetoid appearance, although these features are often noted in the annular configuration of carcinomatous tumors [95,101]. Compared to appendiceal mucoceles and rectal cancer, transvaginal ultrasound appearance of colonic malignancies has been underreported in literature.

Our case demonstrates concordant radiological-pathological correlation with sonographic features reflective of the primary tubulovillous morphology of colon cancer. Tubulovillous structure was demonstrated by the frond-like internal echotexture on transvaginal ultrasound secondary to papillary projections of the mass. These papillary projections extended to the unaffected adjacent bowel wall mucosa giving the appearance of an ovarian follicular pattern. Application of pressure with a transvaginal probe and resultant collapse of the surrounding bowel walls likely contributes to this ovarian echotexture (Fig. 10). In discussion with the interpreting radiologist, the central branching hypervascular component corresponding to the tubular stalk was a significant reason for raising the suspicion for a non-ovarian mass and subsequent MRI recommendation. Our literature search revealed that many of the masqueraders of ovarian cancer, whether infectious, inflammatory, or malignant, demonstrated imaging features that were nonspecific yet concerning for ovarian malignancy. Our case demonstrated a malignancy masquerading as a potentially normal left ovary. We believe that a tubulovillous colon cancer when evaluated with transvaginal ultrasound can mimic ovarian echotexture due to potential similar size, oval or round shape due to

surrounding collapsed bowel wall, and a peripheral frond-like morphology simulating ovarian follicles.

Conclusion

This case report discusses a unique instance of non-ovarian malignancy masquerading as a normal ovary on pelvic ultrasound. Previous literature has shown extraovarian diseases, including infections, inflammatory processes, and extraovarian malignancy can mimic ovarian pathology but not specifically normal ovarian anatomy. This case should be a reminder that nongynecologic pathologies should be considered in the ultrasound evaluation of pelvic pain. Pelvic pain is one of the most common ED presentations and is being increasingly evaluated with point of care transvaginal ultrasound. It is important for clinicians who perform pelvic ultrasound and radiologists to consider these extraovarian mimickers to prevent potential morbidity and mortality of a missed diagnosis.

Informed consent statement

Formal consents are not required for the use of entirely anonymized images from which the individual cannot be identified—for example, x-rays, ultrasound images, pathology slides, or laparoscopic images, provided that these do not contain any identifying marks and are not accompanied by text that might identify the individual concerned.

REFERENCES

- [1] Levi S. The history of ultrasound in gynecology 1950-1980. *Ultrasound Med Biol* 1997;23(4):481–552. doi:10.1016/s0301-5629(96)00196-2.
- [2] Donald I, Macvicar J, Brown TG. Investigation of abdominal masses by pulsed ultrasound. *Lancet* 1958;1(7032):1188–95. doi:10.1016/s0140-6736(58)91905-6.
- [3] Campbell S. A short history of sonography in obstetrics and gynaecology. *Facts Views Vis Obgyn* 2013;5(3):213–29.
- [4] Robinson HP, Shaw-dunn J. Fetal heart rates as determined by sonar in early pregnancy. *J Obstet Gynaecol Br Commonw* 1973;80(9):805–9. doi:10.1111/j.1471-0528.1973.tb11222.x.
- [5] Marsál K. Fetal breathing movements. Characteristics and clinical significance. *Obstet Gynecol* 1978;52(4):394–401.
- [6] Marsál K, Gennser G, Lindström K. Real-time ultrasonography for quantified analysis of fetal breathing movements. *Lancet* 1976;2(7988):718–19. doi:10.1016/s0140-6736(76)90011-8.
- [7] Goldstein SR. Incorporating endovaginal ultrasonography into the overall gynecologic examination. *Am J Obstet Gynecol* 1990;162(3):625–32. doi:10.1016/0002-9378(90)90971-9.
- [8] Fleischer AC, Andreotti RF. Color Doppler sonography in obstetrics and gynecology. *Expert Rev Med Devices* 2005;2(5):605–11. doi:10.1586/17434440.2.5.605.
- [9] Fraser MA, Agarwal S, Chen I, Singh SS. Routine vs. expert-guided transvaginal ultrasound in the diagnosis of endometriosis: a retrospective review. *Abdom Imaging* 2015;40(3):587–94. doi:10.1007/s00261-014-0243-5.
- [10] Abrao MS, Gonçalves MO, Dias JA, Podgaec S, Chamie LP, Blasbalg R. Comparison between clinical examination, transvaginal sonography and magnetic resonance imaging for the diagnosis of deep endometriosis. *Hum Reprod* 2007;22(12):3092–7. doi:10.1093/humrep/dem187.
- [11] Piessens S, Edwards A. Sonographic evaluation for endometriosis in routine pelvic ultrasound. *J Minim Invasive Gynecol* 2020;27(2):265–6. doi:10.1016/j.jmig.2019.08.027.
- [12] Taipale P, Tarjanne H, Ylostalo P. Transvaginal sonography in suspected pelvic inflammatory disease. *Ultrasound Obstet Gynecol* 1995;6(6):430–4. doi:10.1046/j.1469-0705.1995.06060430.x.
- [13] Guerriero S, Ajossa S, Lai MP, Mais V, Paoletti AM, Melis GB. Transvaginal ultrasonography in the diagnosis of pelvic adhesions. *Hum Reprod* 1997;12(12):2649–53. doi:10.1093/humrep/12.12.2649.
- [14] Holland TK, Yazbek J, Cutner A, Saridogan E, Hoo WL, Jurkovic D. Value of transvaginal ultrasound in assessing severity of pelvic endometriosis. *Ultrasound Obstet Gynecol* 2010;36(2):241–8. doi:10.1002/uog.7689.
- [15] Guerriero S, Ajossa S, Gerada M, D'aquila M, Piras B, Melis GB. "Tenderness-guided" transvaginal ultrasonography: a new method for the detection of deep endometriosis in patients with chronic pelvic pain. *Fertil Steril* 2007;88(5):1293–7. doi:10.1016/j.fertnstert.2006.12.060.
- [16] Nezhat C, Santolaya J, Nezhat FR. Comparison of transvaginal sonography and bimanual pelvic examination in patients with laparoscopically confirmed endometriosis. *J Am Assoc Gynecol Laparosc* 1994;1(2):127–30. doi:10.1016/s1074-3804(05)80775-3.
- [17] Mathias SD, Kuppermann M, Liberman RF, Lipschutz RC, Steege JF. Chronic pelvic pain: prevalence, health-related quality of life, and economic correlates. *Obstet Gynecol* 1996;87(3):321–7. doi:10.1016/0029-7844(95)00458-0.
- [18] Zondervan KT, Yudkin PL, Vessey MP, Dawes MG, Barlow DH, Kennedy SH. Prevalence and incidence of chronic pelvic pain in primary care: evidence from a national general practice database. *Br J Obstet Gynaecol* 1999;106(11):1149–55. doi:10.1111/j.1471-0528.1999.tb08140.x.
- [19] Zondervan KT, Yudkin PL, Vessey MP, et al. The community prevalence of chronic pelvic pain in women and associated illness behaviour. *Br J Gen Pract* 2001;51(468):541–7.
- [20] Pitts MK, Ferris JA, Smith AM, Shelley JM, Richters J. Prevalence and correlates of three types of pelvic pain in a nationally representative sample of Australian women. *Med J Aust* 2008;189(3):138–43.
- [21] Latthe P, Latthe M, Say L, Gülmezoglu M, Khan KS. WHO systematic review of prevalence of chronic pelvic pain: a neglected reproductive health morbidity. *BMC Public Health* 2006;6:177. doi:10.1186/1471-2458-6-177.
- [22] Zondervan KT, Yudkin PL, Vessey MP, Dawes MG, Barlow DH, Kennedy SH. The prevalence of chronic pelvic pain in women in the United Kingdom: a systematic review. *Br J Obstet Gynaecol* 1998;105(1):93–9. doi:10.1111/j.1471-0528.1998.tb09357.x.
- [23] Ayorinde AA, Bhattacharya S, Druce KL, Jones GT, Macfarlane GJ. Chronic pelvic pain in women of reproductive and post-reproductive age: a population-based study. *Eur J Pain* 2017;21(3):445–55. doi:10.1002/ejp.938.
- [24] Ahangari A. Prevalence of chronic pelvic pain among women: an updated review. *Pain Physician* 2014;17(2):E141–7.
- [25] Moore J, Kennedy S. Causes of chronic pelvic pain. *Baillieres Best Pract Res Clin Obstet Gynaecol* 2000;14(3):389–402. doi:10.1053/beog.1999.0082.
- [26] Hooker AB, Van moorst BR, Van haarst EP, Van ootegehem NA, Van dijken DK, Heres MH. Chronic pelvic pain: evaluation of the epidemiology, baseline demographics, and clinical variables via a prospective and multidisciplinary approach. *Clin Exp Obstet Gynecol* 2013;40(4):492–8.
- [27] Chung MK, Chung RP, Gordon D. Interstitial cystitis and endometriosis in patients with chronic pelvic pain: The "Evil Twins" syndrome. *JLS* 2005;9(1):25–9.
- [28] Stanford EJ, Koziol J, Feng A. The prevalence of interstitial cystitis, endometriosis, adhesions, and vulvar pain in women with chronic pelvic pain. *J Minim Invasive Gynecol* 2005;12(1):43–9. doi:10.1016/j.jmig.2004.12.016.
- [29] Sand PK. Chronic pain syndromes of gynecologic origin. *J Reprod Med* 2004;49(3 Suppl):230–4.
- [30] Stanford EJ, Dell JR, Parsons CL. The emerging presence of interstitial cystitis in gynecologic patients with chronic pelvic pain. *Urology* 2007;69(4 Suppl):53–9. doi:10.1016/j.urology.2006.05.049.
- [31] Porpora MG, Koninckx PR, Piazzè J, Natili M, Colagrande S, Cosmi EV. Correlation between endometriosis and pelvic pain. *J Am Assoc Gynecol Laparosc* 1999;6(4):429–34. doi:10.1016/s1074-3804(99)80006-1.
- [32] Osório FL, Carvalho AC, Donadon MF, Moreno AL, Polli-neto O. Chronic pelvic pain, psychiatric disorders and early emotional traumas: Results of a cross sectional case-control study. *World J Psychiatry* 2016;6(3):339–44. doi:10.5498/wjp.v6.i3.339.
- [33] Latthe P, Mignini L, Gray R, Hills R, Khan K. Factors predisposing women to chronic pelvic pain: systematic review. *BMJ* 2006;332:749–55. doi:10.1136/bmj.38748.697465.55.
- [34] Coelho LS, Brito LM, Chein MB, Mascarenhas TS, Costa JP, Nogueira AA, Poli-Neto OB. Prevalence and conditions associated with chronic pelvic pain in women from São

- Luís, Brazil. *Braz J Med Biol Res.* 2014;47:818–25. doi:10.1590/1414-431x20143710.
- [35] Kruszka PS, Kruszka SJ. Evaluation of acute pelvic pain in women. *Am Fam Physician* 2010;82(2):141–7.
- [36] Hecht S, Meissnitzer M, Forstner R. [Acute Pelvic pain in women-gynecological causes]. *Radiologe* 2019;59(2):126–32. doi:10.1007/s00117-018-0475-4.
- [37] Wilson SP, Connolly K, Lahham S, et al. Point-of-care ultrasound versus radiology department pelvic ultrasound on emergency department length of stay. *World J Emerg Med* 2016;7(3):178–82. doi:10.5847/wjem.j.1920-8642.2016.03.003.
- [38] Burgher SW, Tandy TK, Dawdy MR. Transvaginal ultrasonography by emergency physicians decreases patient time in the emergency department. *Acad Emerg Med* 1998;5(8):802–7. doi:10.1111/j.1553-2712.1998.tb02507.x.
- [39] Shetty M. Nonovarian Mimics of Ovarian Malignancy. *Semin Ultrasound CT MR* 2019;40(4):319–31. doi:10.1053/j.sult.2019.04.003.
- [40] Levine CD, Patel UJ, Ghanekar D, Wachsberg RH, Simmons MZ, Stein M. Benign extraovarian mimics of ovarian cancer. Distinction with imaging studies. *Clin Imaging.* 1997;21(5):350–8. doi:10.1016/s0899-7071(96)00090-3.
- [41] Thamburaj R, Sivitz A. Does the use of bedside pelvic ultrasound decrease length of stay in the emergency department? *Pediatr Emerg Care* 2013;29(1):67–70. doi:10.1097/PEC.0b013e31827b53f9.
- [42] Ohngemach DJ, Esterson YB, Rahman N, Noor A, Pellerito JS. Unexpected findings during evaluation of acute pelvic pain with transvaginal sonography. *J Ultrasound Med.* 2016;35(12):2687–96. doi:10.7863/ultra.16.02015.
- [43] Bazot M, Darai E, Rouger J, Detchev R, Cortez A, Uzan S. Limitations of transvaginal sonography for the diagnosis of adenomyosis, with histopathological correlation. *Ultrasound Obstet Gynecol* 2002;20(6):605–11. doi:10.1046/j.1469-0705.2002.00852.x.
- [44] Savelli L, Manuzzi L, Pollastri P, Mabrouk M, Seracchioli R, Venturoli S. Diagnostic accuracy and potential limitations of transvaginal sonography for bladder endometriosis. *Ultrasound Obstet Gynecol* 2009;34(5):595–600. doi:10.1002/uog.7356.
- [45] Rostamzadeh A, Mirfendereski S, Rezaei MJ, Rezaei S. Diagnostic efficacy of sonography for diagnosis of ovarian torsion. *Pak J Med Sci* 2014;30(2):413–16.
- [46] Mashiach R, Melamed N, Gilad N, Ben-shitrit G, Meizner I. Sonographic diagnosis of ovarian torsion: accuracy and predictive factors. *J Ultrasound Med* 2011;30(9):1205–10. doi:10.7863/jum.2011.30.9.1205.
- [47] Karaman E, Beger B, Çetin O, Melek M, Karaman Y. Ovarian torsion in the normal ovary: a diagnostic challenge in postmenarchal adolescent girls in the emergency department. *Med Sci Monit* 2017;23:1312–16. doi:10.12659/msm.902099.
- [48] Moyle PL, Kataoka MY, Nakai A, Takahata A, Reinhold C, Sala E. Nonovarian cystic lesions of the pelvis. *Radiographics* 2010;30(4):921–38. doi:10.1148/rg.304095706.
- [49] Pinto A, Pinto F, Faggian A, et al. Sources of error in emergency ultrasonography. *Crit Ultrasound J* 2013;5(Suppl 1):S1. doi:10.1186/2036-7902-5-S1-S1.
- [50] Ertas IE, Gungorduk K, Ozdemir A, et al. Pelvic tuberculosis, echinococcosis, and actinomycosis: great imitators of ovarian cancer. *Aust N Z J Obstet Gynaecol* 2014;54(2):166–171. doi:10.1111/ajo.12191.
- [51] Ellis MW, Dooley DP, Sundborg MJ, Joiner LL, Kost ER. Coccidioidomycosis mimicking ovarian cancer. *Obstet Gynecol* 2004;104(5 Pt 2):1177–1179. doi:10.1097/01.AOG.0000128111.90367.f2.
- [52] Gehrig PA, Boggess JF, Ollila DW, Groben PA, Van Le L. Appendix cancer mimicking ovarian cancer. *Int J Gynecol Cancer* 2002;12(6):768–772. doi:10.1046/j.1525-1438.2002.01136.x.
- [53] Merino MJ. Malignant mesothelioma mimicking ovarian cancer. *Int J Surg Pathol* 2010;18(3 Suppl):178S–180S. doi:10.1177/1066896910370880.
- [54] Drayer SM, Shank JJ. Infectious diseases mimicking ovarian carcinomatosis. *Gynecol Oncol Rep.* 2018;26:29–31 Published 2018 Aug 28. doi:10.1016/j.gore.2018.08.008.
- [55] Păun I, Mogoș D, Păun M, et al. Afecțiuni mimând cancerul ovarian epitelial în stadiu avansat [Diseases mimicking advanced-stage epithelial ovarian cancer]. *Chirurgia (Bucur)* 2010;105(4):541–544.
- [56] Mani H, Merino MJ. Mesothelial neoplasms presenting as, and mimicking, ovarian cancer. *Int J Gynecol Pathol* 2010;29(6):523–528. doi:10.1097/PGP.0b013e3181e6a3ee.
- [57] Pietzner K, Noske A, Cho CH, Kiecker F, Sehoul J. Amelanotic metastasis of melanoma mimicking ovarian cancer: a case report and review of the literature. *Anticancer Res* 2008;28(1B):563–566.
- [58] Barroso LF, Wispelwey B. Donovanosis presenting as a pelvic mass mimicking ovarian cancer. *South Med J* 2009;102(1):104–105. doi:10.1097/SMJ.0b013e31817ff982.
- [59] Chen JR, Yang TL, Lan FH, Lin TW. Pyomyoma mimicking advanced ovarian cancer: a rare manifestation in a postmenopausal virgin. *Taiwan J Obstet Gynecol* 2014;53(1):101–103. doi:10.1016/j.tjog.2013.06.011.
- [60] Stout JE, Woods CW, Alvarez AA, Berchuck A, Dukes Hamilton C. *Mycobacterium bovis* peritonitis mimicking ovarian cancer in a young woman. *Clin Infect Dis* 2001;33(4):E14–E16. doi:10.1086/321908.
- [61] Gojavey A, English DP, Macer M, Azodi M. Chlamydia peritonitis and ascites mimicking ovarian cancer. *Case Rep Obstet Gynecol* 2016;2016:8547173. doi:10.1155/2016/8547173.
- [62] Salman MC, Atak Z, Usubutun A, Yuce K. Lipoleiomyoma of broad ligament mimicking ovarian cancer in a postmenopausal patient: case report and literature review. *J Gynecol Oncol* 2010;21(1):62–64. doi:10.3802/jgo.2010.21.1.62.
- [63] Yadav S, Maheswari B, Sagar N, Mallya V, Khurana N, Gupta S. Broad ligament lipoleiomyoma masses: two curious cases masquerading as ovarian carcinomas. *Sultan Qaboos Univ Med J.* 2017;17(4):e477–e480. doi:10.18295/squmj.2017.17.04.018.
- [64] Agarwal U, Dahiya P, Sangwan K. Leiomyosarcoma of the broad ligament mimicking as ovarian carcinoma—a case report. *Arch Gynecol Obstet* 2003;269(1):55–56. doi:10.1007/s00404-002-0418-0.
- [65] Imperiale L, Marchetti C, Salerno L, et al. Nonabsorbable suture granuloma mimicking ovarian cancer recurrence at combined positron emission tomography/computed tomography evaluation: a case report. *J Med Case Rep* 2014;8:202. doi:10.1186/1752-1947-8-202.
- [66] Cormio L, Cormio G, Di Fino G, et al. Surgicel® granuloma mimicking ovarian cancer: A case report. *Oncol Lett* 2016;12(2):1083–1084. doi:10.3892/ol.2016.4689.
- [67] Eulitt P, Fabian D, Kelly C, Hemminger J, William BM. Waldenström's macroglobulinemia masquerading as ovarian cancer with peritoneal carcinomatosis, ascites, and elevated CA-125. *Hematol Oncol Stem Cell Ther* 2019;12(1):54–59. doi:10.1016/j.hemonc.2017.02.004.
- [68] Stuver R, Petersen A, Guerrero-Garcia TA, Matulonis U, Richardson P, Singh P. Multiple myeloma masquerading as ovarian carcinosarcoma metastases: a case report and review of the approach to multiple myeloma screening and diagnosis. *Case Rep Hematol* 2018;2018:3029650. doi:10.1155/2018/3029650.

- [69] Rabesalama S, Mandeville K, Raheison R, Rakoto-ratsimba H. Isolated ovarian tuberculosis mimicking ovarian carcinoma: case report and literature review. *Afr J Infect Dis* 2011;5(1):7–10. doi:10.4314/ajid.v5i1.66508.
- [70] Yazici G, Dilek UT, Karabacak T, Ertunc D, Korkmaz M, Dilek S. Adnexal fascioliasis masquerading as ovarian cancer. *Gynecol Oncol* 2005;99(1):236–238. doi:10.1016/j.ygyno.2005.06.016.
- [71] Bland AE, Shah AA, Piscitelli JT, Bentley RC, Secord AA. Desmoplastic small round cell tumor masquerading as advanced ovarian cancer. *Int J Gynecol Cancer* 2008;18(4):847–850. doi:10.1111/j.1525-1438.2007.01110.x.
- [72] Ozat M, Altinkaya SO, Gungor T, et al. Extraovarian conditions mimicking ovarian cancer: a single center experience of 15 years. *Arch Gynecol Obstet* 2011;284(3):713–719. doi:10.1007/s00404-010-1705-9.
- [73] Shetty M. Imaging and Differential Diagnosis of Ovarian Cancer. *Semin Ultrasound CT MR* 2019;40(4):302–318. doi:10.1053/j.sult.2019.04.002.
- [74] Malave C, Wynn G, Nussbaum MS, Kaunitz AM. Incidental diagnosis of appendiceal mucocele with vaginal ultrasonography and computed tomography. *Obstet Gynecol* 2011;117(2 Pt 2):479–481. doi:10.1097/AOG.0b013e318203ea37.
- [75] Fernández Sánchez J, Bücklein W. Mukozele der Appendix. Sonographische, computertomographische und radiologische Eigenschaften [Mucocele of the appendix. Sonographic, computed tomographic and radiologic characteristics]. *Radiologe* 1990;30(1):15–18.
- [76] Pitiakoudis M, Tsaroucha AK, Mimidis K, Polychronidis A, Minopoulos G, Simopoulos C. Mucocele of the appendix: a report of five cases. *Tech Coloproctol* 2004;8(2):109–112. doi:10.1007/s10151-004-0067-3.
- [77] Kalu E, Croucher C. Appendiceal mucocele: a rare differential diagnosis of a cystic right adnexal mass. *Arch Gynecol Obstet* 2005;271(1):86–88. doi:10.1007/s00404-004-0663-5.
- [78] Papoutsis D, Protopoulos A, Belitsos P, et al. Mucocele of the vermiform appendix misdiagnosed as an adnexal mass on transvaginal sonography. *J Clin Ultrasound* 2012;40(8):522–525. doi:10.1002/jcu.20858.
- [79] Balci O, Ozdemir S, Mahmoud AS. Appendiceal mucocele mimicking a cystic right adnexal mass. *Taiwan J Obstet Gynecol* 2009;48(4):412–414. doi:10.1016/S1028-4559(09)60333-8.
- [80] Kanasugi T, Kikuchi A, Omi H, Ikeda M, Fukushima A, Sugiyama T. Appendiceal mucocele and peritoneal inclusion cyst mimicking right adnexal masses: a diagnostic challenge in gynecologic practice. *J Med Ultrason* 2001;40(1):51–55 2013. doi:10.1007/s10396-012-0379-2.
- [81] Soueï-Mhiri M, Tlili-Graies K, Ben Cherifa L, et al. Les mucocèles appendiculaires. Etude rétrospective à propos de 10 cas [Mucocele of the appendix. Retrospective study of 10 cases]. *J Radiol* 2001;82(4):463–468.
- [82] Jansen E, Fransis S, Ahmad S, Timmerman D, Van Holsbeke C. Imaging in gynaecological disease: clinical and ultrasound characteristics of mucocele of the appendix. A pictorial essay. *Facts Views Vis Obgyn*. 2013;5(3):209–212.
- [83] Laing FC, Benson CB, DiSalvo DN, Brown DL, Frates MC, Loughlin KR. Distal ureteral calculi: detection with vaginal US. *Radiology* 1994;192:545–8. doi:10.1148/radiology.192.2.8029429.
- [84] Sherer DM, Rideout J. Transvaginal sonography of pelvic kidney. *J Clin Ultrasound* 1994;22(3):214–215. doi:10.1002/jcu.1870220315.
- [85] Pradel JA, Adell JF, Taourel P, Djafari M, Monnin-Delhom E, Bruel JM. Acute colonic diverticulitis: prospective comparative evaluation with US and CT. *Radiology* 1997;205(2):503–512. doi:10.1148/radiology.205.2.9356636.
- [86] Dhamanaskar KP, Thurston W, Wilson SR. Transvaginal sonography as an adjunct to endorectal sonography in the staging of rectal cancer in women. *AJR Am J Roentgenol* 2006;187(1):90–98. doi:10.2214/AJR.04.1363.
- [87] Zielke A, Hasse C, Nies C, et al. Prospective evaluation of ultrasonography in acute colonic diverticulitis. *Br J Surg* 1997;84(3):385–388.
- [88] Savage L, Gosling J, Suliman I, Klein M. Epiploic appendagitis with acute appendicitis. *BMJ Case Rep* 2013;2013:bcr2013010333. doi:10.1136/bcr-2013-010333.
- [89] Wilson SR, Toi A. The value of sonography in the diagnosis of acute diverticulitis of the colon. *AJR Am J Roentgenol* 1990;154(6):1199–1202. doi:10.2214/ajr.154.6.2110728.
- [90] Al-Roubaie M, Pellerito J. Findings of acute appendicitis on transvaginal ultrasound. *Ultrasound Q* 2014;30(3):213–215. doi:10.1097/RUQ.0000000000000115.
- [91] Caspi B, Weissman A, Pfefferman R, Appleman Z. Acute appendicitis: diagnosis by transvaginal sonography. *Ultrasound Obstet Gynecol* 1996;7(5):359–360. doi:10.1046/j.1469-0705.1996.07050359.x.
- [92] Scineaux TL, Sills ES, Perloe M, Daly JP, Schattman GL. Transvaginal ultrasonographic identification of appendicitis in a setting of chronic pelvic pain and endometriosis. *South Med J* 2001;94(1):73–74.
- [93] Pelsang RE, Warnock NG, Abu-Yousef M. Diagnosis of acute appendicitis on transvaginal ultrasonography. *J Ultrasound Med* 1994;13(9):723–725. doi:10.7863/jum.1994.13.9.723.
- [94] Whitford CM, Crade M. Transvaginal diagnosis of appendicitis. *AJR Am J Roentgenol* 1994;162(2):469. doi:10.2214/ajr.162.2.8310957.
- [95] Damani N, Wilson SR. Nongynecologic applications of transvaginal US. *Radiographics* 1999;19(Spec No):S179–S266. doi:10.1148/radiographics.19.suppl_1.g99oc15s179.
- [96] Berdov BA, Slesarev VI, Fedlaev JB. Transrektale und transvaginale Ultraschalldiagnostik des Rektumkarzinoms [Transrectal and transvaginal ultrasonic diagnosis of rectal cancer]. *Radiol Diagn (Berl)* 1990;31(5):529–536.
- [97] Benacerraf BR, Kearney GP, Gittes RF. Ultrasound diagnosis of small asymptomatic bladder carcinoma in patients referred for gynecological scan. *J Urol* 1984;132(5):892–893. doi:10.1016/s0022-5347(17)49935-6.
- [98] Mavrelis D, Cohen H, Pateman K, Hoo W, Foo X, Jurkovic D. Diagnosis of uterine vein thrombosis on transvaginal ultrasound. *Ultrasound Obstet Gynecol* 2013;42(4):480–483. doi:10.1002/uog.12520.
- [99] Senagore A, Milsom JW, Talbott TM, Muldoon JP, Mazier WP. Intra-rectal ultrasonography in the staging and management of rectal tumors. *Am Surg* 1988;54(6):352–5.
- [100] Badea R, Badea G, Dejica D, Henegar E. The role of transvaginal sonography as compared with endorectal sonography in the evaluation of rectal cancer: preliminary study. *Surg Endosc* 1991;5:89–91. doi:10.1007/BF00316844.
- [101] Wang KY, Kimmey MB, Nyberg DA, et al. Colorectal neoplasms: accuracy of US in demonstrating the depth of invasion. *Radiology* 1987;165(3):827–9. doi:10.1148/radiology.165.3.3317508.