

Precision diagnostic approach to predict 5-year risk for microvascular complications in type 1 diabetes



Naba Al-Sari,^a Svetlana Kutuzova,^b Tommi Suviavaara,^a Peter Henriksen,^a Flemming Pociot,^{a,c} Peter Rossing,^{a,c*} Douglas McCloskey,^{b,**} and Cristina Legido-Quigley^{a,d*}

^aSteno Diabetes Center Copenhagen, Niels Steensens Vej 2-4, Gentofte DK-2820, Denmark

^bNovo Nordisk Foundation Center for Biosustainability, Technical University of Denmark, Vej Building 220, Lyngby DK-2800, Denmark

^cDepartment of Clinical Medicine, University of Copenhagen, Denmark

^dInstitute of Pharmaceutical Science, King's College London, UK

Summary

Background Individuals with long standing diabetes duration can experience damage to small microvascular blood vessels leading to diabetes complications (DCs) and increased mortality. Precision diagnostic tailors a diagnosis to an individual by using biomedical information. Blood small molecule profiling coupled with machine learning (ML) can facilitate the goals of precision diagnostics, including earlier diagnosis and individualized risk scoring.

Methods Using data in a cohort of 537 adults with type 1 diabetes (T1D) we predicted five-year progression to DCs. Prediction models were computed first with clinical risk factors at baseline and then with clinical risk factors and blood-derived molecular data at baseline. Progression of diabetic kidney disease and diabetic retinopathy were predicted in two complication-specific models.

Findings The model predicts the progression to diabetic kidney disease with accuracy: 0.96 ± 0.25 and 0.96 ± 0.06 area under curve, AUC, with clinical measurements and with small molecule predictors respectively and highlighted main predictors to be albuminuria, glomerular filtration rate, retinopathy status at baseline, sugar derivatives and ketones. For diabetic retinopathy, AUC 0.75 ± 0.14 and 0.79 ± 0.16 with clinical measurements and with small molecule predictors respectively and highlighted key predictors, albuminuria, glomerular filtration rate and retinopathy status at baseline. Individual risk scores were built to visualize results.

Interpretation With further validation ML tools could facilitate the implementation of precision diagnosis in the clinic. It is envisaged that patients could be screened for complications, before these occur, thus preserving healthy life-years for persons with diabetes.

Funding This study has been financially supported by Novo Nordisk Foundation grant NNF14OC0013659.

Copyright © 2022 The Authors. Published by Elsevier B.V. This is an open access article under the CC BY-NC-ND license (<http://creativecommons.org/licenses/by-nc-nd/4.0/>)

Keywords: Diabetes complications; Diabetic kidney disease; Diabetic retinopathy; Machine learning; Microvascular complications

Introduction

Devastating microvascular diabetes complications (DCs), such as diabetic nephropathy (DN) and diabetic retinopathy (DR), lead to increased mortality, blindness, kidney failure and overall decreased quality of life in individuals with diabetes.^{1,2} Systemic high glucose

levels result in damage in the cells of the capillary endothelium of the retina and in the cells of the mesangial in the glomerulus. Thus, hyperglycemia is the most important known predictor of the pathogenesis of these two complications in type 1 diabetes.³ Glomerular filtration rate (GFR) and the urinary albumin excretion rate, which themselves are measures of DN, are also major predictors of further progression of DN.⁴ Although clinical risk factors and glycemic control can be good predictors of the development of microvascular complications, they are not necessarily informative at the early stages of disease. Hence, there is a need for technology that

*Corresponding authors at: Steno Diabetes Center Copenhagen, Niels Steensens Vej 2-4, Gentofte DK-2820, Denmark.

**Corresponding author.

E-mail addresses: peter.rossing@regionh.dk (P. Rossing), domcc@biosustain.dtu.dk (D. McCloskey), cristina.legido-quigley@regionh.dk (C. Legido-Quigley).

eBioMedicine 2022;80: 104032

Published online xxx

<https://doi.org/10.1016/j.ebiom.2022.104032>

Research in context

Evidence before this study

Microvascular diabetes complications (DCs), such as diabetic kidney disease (DKD) and diabetic retinopathy (DR), lead to increased mortality, blindness, kidney failure and overall decreased quality of life in individuals with diabetes.

Added value of this study

We have developed four algorithms based on traditional risk factors alone and risk factors with metabolomic and lipidomic data. Two accurately predicted the future progression in individuals with type 1 diabetes. The top predictors chosen by the algorithm were hemoglobin A_{1c}, albuminuria and retinopathy status at baseline for diabetic retinopathy. The most promising models predicted future diabetic kidney disease in which albuminuria, eGFR, retinopathy status at baseline were complemented with a number of ketones and sugar derivatives.

Implications of all evidence available

With further validation in several cohorts, the prediction models presented here have the potential for early diagnosis of CKD in persons with diabetes, thus enabling appropriate decisions on the available therapies. It is envisaged that these algorithms will be trialed and support clinicians with precision diagnosis and treatments.

can exploit hidden risk patterns and molecular dynamics, thus achieving accurate prediction of DCs.

Metabolomics and lipidomics are snapshots of metabolism and can be applied to the study of diabetes to obtain a comprehensive molecular profile.⁵ Over the past decade, omics technologies have shown the potential to personalize patient care in a way that was previously unthinkable.^{5–8} Thus, by combining already well-known clinical risks factors together with a broad omics panel, we aim to study the biological dynamics during progression to DR and DN.

Machine learning (ML) algorithms learn descriptive patterns from large amounts of data. Hence, the application of this technology can support clinical decisions and is one of the areas where artificial intelligence has had the most impact in the recent years.^{9,10} ML can empower healthcare professionals, and to date it has been applied effectively to predict the risk of heart failure and retinopathy in diabetes.^{11,12} Significant strides are being made towards using ML algorithms to predict other conditions. In the case of diabetic kidney disease (DKD), extensive research has been carried out to find predictive biomarkers for future end-stage kidney disease. However, to the knowledge of the authors, no single study exists, which employs ML to predict

progression of estimated Glomerular Filtration Rate (eGFR) decline in type 1 diabetes.¹³ In the case of DR complications, on the other hand, hundreds of publications and patents with highly predictive approaches have recently been reported and filed, including deep learning-based image analysis of retinal images.¹²

In a large and well-characterized type 1 diabetes cohort from Steno Diabetes Center Copenhagen (SDCC), we sought to develop easily interpretable and accurate prognostic risk prediction models for DCs. To this end, we apply ML with clinical data combined with two sets of omics data to predict DC progression in follow-up data. In this study, we hypothesize that ML can be used for prediction of future complications in type 1 diabetes using standard clinical risk factors; and² combining blood-based metabolic phenotyping and clinical data will improve the prediction by modeling the dynamics between risk factors and molecular metabolism. The ultimate aim of this study is to design a personalized risk prediction tool for DCs that can be applied in clinical practice.

Methods

Study design and participants

This study is based on a cohort of 648 adults with type 1 diabetes followed at SDCC and previously described by Theilade et al.¹⁴ As the present study focuses on prediction of progression, any participants with missing follow-up data on DCs were excluded from the analysis. Thus, metabolomics and lipidomics data along with follow-up information on DKD and retinopathy status were available for 537 participants. Advanced DCs at baseline such as macroalbuminuria, and severe retinopathy (proliferative or blind) were excluded, leaving 383 participants with mild or no DCs at the baseline assessment. Anova test was used for continuous variables, and χ^2 test was used for categorical variables for statistical comparisons of the baseline characteristics of the groups compared.

The study was performed in compliance with the Declaration of Helsinki and was approved (2009-056) by the ethics committee for the Capital Region of Denmark (Hillerød, Denmark). All participants have given a written consent.

Baseline clinical measurements

A detailed description of clinical measurements has previously been reported.^{15–17} HbA_{1c}, serum creatinine, plasma cholesterol, and triglycerides were measured using standardized methods from venous samples. Albuminuria was subdivided by stages (normo-, micro-, and macroalbuminuria, using 30 and 300 mg/g creatinine or mg/24 h as cut offs). Decline in eGFR was defined as the first occurrence of $\geq 30\%$ decrease from

baseline, as proposed by Coresh et al.¹⁸ Retinopathy status was assessed at SDCC as no retinopathy, mild non-proliferative retinopathy, moderate non-proliferative retinopathy, proliferative retinopathy, proliferative retinopathy with fibrosis, and blind. Previous cardiovascular disease (CVD) was defined as any previous event of ischemic heart disease, ischemic stroke, heart failure, and peripheral artery disease. Information on medication was collected from electronic medical records. Following categories were applied: use of lipid-lowering treatment (yes/no), antihypertensive treatment (yes/no) and current smoking (yes/no).

Metabolic phenotyping and preprocessing

Metabolite and lipid concentrations were measured in plasma samples using untargeted ultra-high-performance liquid chromatography coupled to mass spectrometry (UHPLC-MS) and two-dimensional gas chromatography coupled to time-of-flight mass spectrometry (GC × GC-TOFMS) as previously described.^{16,17,19–22} Metabolomics and lipidomics analyses were performed following our protocols (see detailed information in^{21,23}). All reported metabolite annotations are from our in-house library and have been validated using pure spiked reference standards. Global metabolomics based on GC × GC-TOF-MS, covers small molecules such as sugars, free fatty acids and amino acids. Global lipidomics based on UHPLC-MS covers molecular lipid species, such as neutral lipids, sphingolipids and phospholipids. Raw GC × GC-TOF-MS and UHPLC-MS data were processed with ChromaTOF (LECO; Saint Joseph; USA) and MZmine 2, respectively. Finally, data from each platforms were post-processed in R by batch-correction, truncation of outliers, and imputation of missing values, as described previously. The final data sets of metabolite and lipid species consisted of the measured levels of identified and unidentified compounds. Inclusion of the complete data from the platforms was used to acquire an unbiased global metabolic phenotype. Finally, features with a very high mutual correlation (Pearson correlation coefficient larger than 0.85) were removed, thus leaving one feature from each tight feature group as a nonredundant predictor.

Machine learning method

Data and model design. Random Forest (RF) models were applied to predict future risk of progression of DCs.²³ We evaluated three scenarios with participants divided into two groups: first, non-progressors (persons with mild complication not advancing to another stage of the complication; $n = 195$), and progressors ($n = 190$), including both the DR and DKD progressors; second, only progression to DR (mild, moderate or severe)

predicted for 193 non-progressors and 111 progressors; and third, only progression to DKD ($\geq 30\%$ decline in eGFR) predicted for 193 non-progressors and 79 progressors.

The RF classifier was employed to predict whether the participant will during the follow-up progress to at least one of the complications. For each of the models, two sets of features were evaluated: (1) clinical variables only (17 measures), and (2) blood small molecule data (965 molecular features) along with the clinical variables.

Clinical variables with no predictive power were excluded for improved performance. Unidentified compounds that were picked by the ML algorithm (as described next) were further investigated to acquire putative identities by manually comparing the retention time (RT), mass-to-charge ratio (m/z) and fragmentation pattern with spectral libraries. All prediction models were developed using SciKit-learn²⁴ in Python (v3.7.1). RF scalable visualizations (decision trees) for interpretation are created with 'pybaobabdt' library.²⁵

Model validation. The models were trained by splitting the data into training and testing datasets through k -fold cross validation ($k = 5$). The number of Decision Trees in the ensemble was set to 500, all features were included in each split without *a priori* feature selection and a panel of features was then selected by the model. Non-progressors and progressors were divided randomly into a training set (80%) used to build the RF models and an unseen validation data set (20%) used to validate the model performance. The main predictors and features of importance were selected using the maximal mean absolute SHapley Additive exPlanation (SHAP) algorithm. This method selects features while ensuring the top performance model is obtained.²⁶ For each panel of predictors, the performance was calculated for each round on mean AUROC values from which the optimal number of features was selected. The models were further tested for performance stability using Monte Carlo (MC) simulation consisting of 100 iterations.^{27,28} Model performance was evaluated with the following metrics: AUROC, prediction accuracy, precision, recall (sensitivity), and F-score. Prediction performance was assessed at the class decision threshold of 0.50. T -test on normally distributed AUC values were calculated to compare the models (with and without blood small-molecules) using 100 randomly created training and test data sets and compared the AUC values obtained in MC.

To illustrate the applicability of the algorithm for personalized medicine, the results from two individuals using clinical risk factors were portrayed (Figure 2g). Univariate regression analyses for all important metabolites and lipids are provided in Supplementary Tables (S1–S3).

Role of the funding source

The funder had no role in the study design, data collection, data analyses, interpretation or writing of the report.

Results

A graphical representation of the study design and ML specifications is shown in [Figure 1](#). Participants' baseline characteristics are given in [Table 1](#).

Baseline characteristics of the cohort

The baseline characteristics of the included individuals were as follows: mean \pm SD: age of 54.8 ± 13.7 years, a median diabetes duration of 30.4 ± 16.9 years and 171 (45%) women ([Table 1](#)). Overall, 215 (56%) had normoalbuminuria at baseline, 104 (27%) and 64 (17%) had microalbuminuria and macroalbuminuria, respectively. At baseline eGFR was 88.8 ± 27.1 ml min⁻¹ 1.73 m⁻². During follow-up, 79 participants experienced a $\geq 30\%$ decline in eGFR, and 111 individuals progressed in the DR stage. The majority (62%) were on antihypertensive treatment (AHT) and statin (52%) treatment. Median follow-up time was 5.4 years.

Metabolic phenotyping

Using the two untargeted analytical platforms for metabolites, a total of 702 lipid species and 263 metabolites were measured, respectively, from 385 plasma samples. All 965 non-redundant omics features were included in the development of the ML algorithms (see methods, 'Modeling design').

Out of the omics features included, 14 omics features appeared as predictors of importance in the models with clinical and omics (described in the next subsection). Six of the selected omics features were known metabolites: ketone bodies (2,4- and 3,4-dihydroxybutanoic acids) and four sugar derivatives (ribitol, ribonic acid, myo-inositol, and meso-erythritol).

Further two features were known lipid species: a saturated ceramide Cer(d42:0) and a monounsaturated sphingomyelin SM(d30:1). The last six features were putatively identified. Based on RT and Golm Metabome Database,²⁹ 'M_68' is a small metabolite with more than one hydroxyl group, thus likely a sugar. 'M_76' is indicatively a large carboxylic acid. Based on m/z values from the unknown lipid species and according to the LIPID MAPS database,³⁰ 'L_195' and 'L_168' are putative ceramides. L_103' is a phosphatidylserine or a phosphatidylinositol. 'L_439' could not be identified.

Risk prediction models

Overall, the predictive performance of all models using traditional risk factors showed excellent and robust

predictive performance for future progression to DCs ([Figure 2](#)). Moreover, combining metabolic phenotyping and clinical variables improved the prediction performance ([Figure 3](#)). The importances and contributions of the top-features in the models are shown in the SHAP summary plots. Next, we will describe the models in detail.

Clinical-based biomarkers in the prediction of diabetes complications.

Overall, 190 participants (49%) experienced any progression of retinopathy and/or $\geq 30\%$ decline in eGFR from baseline to follow-up. The final model for combined DCs selected through the SHAP method included 14 out of the initial 17 clinical baseline variables: albuminuria, mild degree of retinopathy, HbA_{1c}, eGFR, systolic BP, HDL-cholesterol, BMI, LDL-cholesterol, diabetes duration, total cholesterol, age, total triglycerides, antihypertensive therapy (AHT) and previous cardiovascular disease (CVD) ([Figure 2a](#)). Smoking, gender and statin remained unincluded. Using five-fold cross-validation for discrimination on SHAP selected features, the mean AUROC was 0.81 (95% CI 0.687;0.893) in the validation set with an accuracy of 0.81, precision of 0.79, F1-score of 0.80, and recall of 0.81 ([Figure 2b](#)). The 100 AUROC values obtained in MC had a mean of 0.68, and a standard deviation of 0.11.

A total of 79 participants (21%) experienced a progressive decline of $\geq 30\%$ in eGFR. The optimal DKD model included 15 clinical baseline variables: albuminuria, eGFR, mild degree of retinopathy, AHT, systolic blood pressure, HbA_{1c}, age, previous CVD, diabetes duration, total triglycerides, HDL-cholesterol, BMI, LDL-cholesterol, total cholesterol, and statin, excluding smoking and gender ([Figure 2b](#)). Smoking and gender were not included in the optimal model. AUROC for the DKD model was 0.92 (95% CI 0.857;0.995) with an accuracy of 0.95, precision of 1.00, F1-score of 0.89, and recall of 0.80 ([Figure 2e](#)). The 100 AUROC values obtained in MC had a mean of 0.95, and a standard deviation of 0.11. An individual decision tree for classifying the $\geq 30\%$ eGFR decline model based clinical dataset is shown in [Figure 4a](#).

A total of 111 participants (28.83%) experienced any progression of retinopathy. The best model derived from RF algorithm for retinopathy included 12 clinical baseline variables: HbA_{1c}, albuminuria, mild degree of retinopathy, HDL-cholesterol, eGFR, diabetes duration, LDL-cholesterol, systolic BP, BMI, age, total cholesterol, total triglycerides, and total cholesterol ([Figure 2c](#)). Smoking, gender, statin, AHT, and previous CVD were not included in the optimal model. The mean AUROC for the retinopathy model was 0.81 (95% CI 0.754;0.958) with an accuracy of 0.75, precision of 0.73, F1-score of 0.59, and recall of 0.50 ([Figure 2f](#)). The 100 AUROC values obtained in MC had a mean of 0.79,

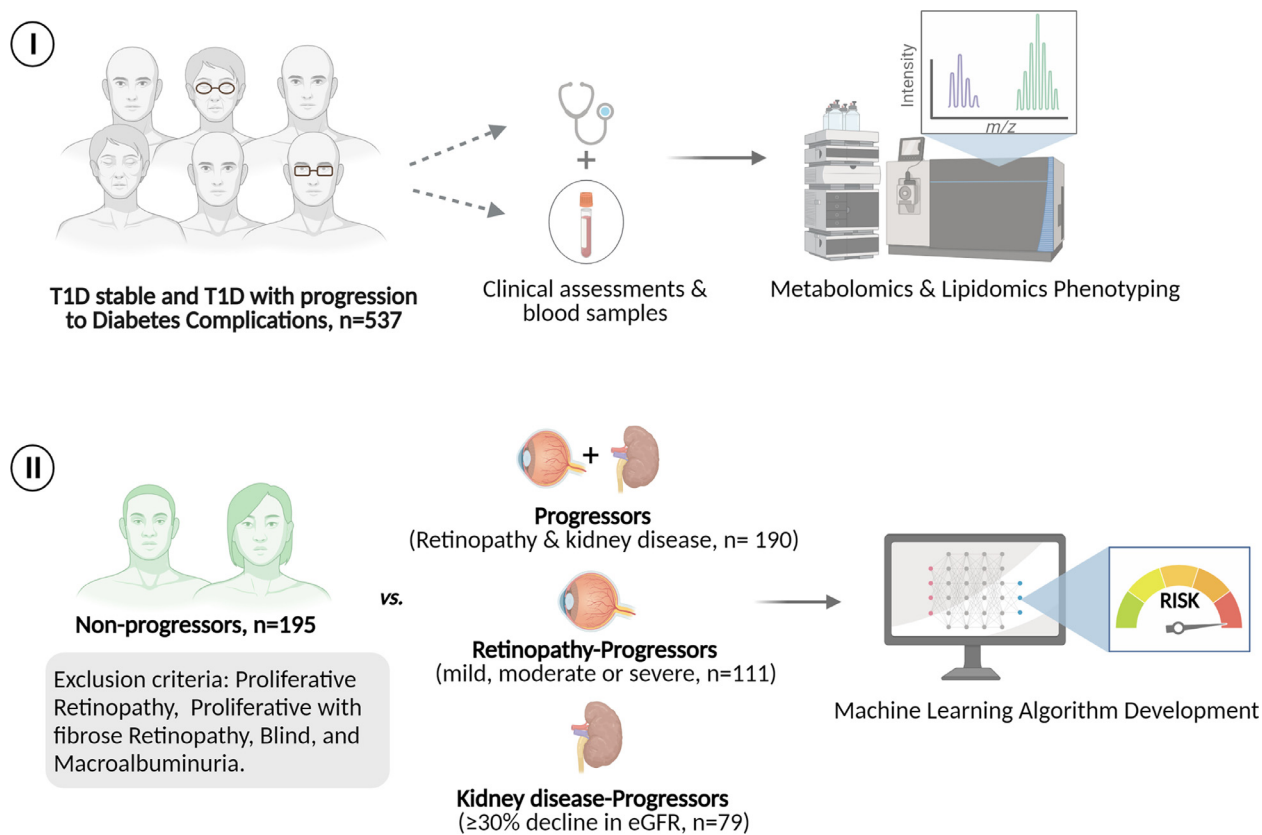


Figure 1. Graphical representation of study design and machine learning implication. Baseline clinical data and plasma samples (for metabolomics and lipidomics analysis) were collected from 537 individuals with type 1 diabetes (I). Participants were classified into two groups: type 1 diabetes stable ($n = 195$) or type 1 diabetes with progression to diabetes complications ($n = 190$). Progression of combined diabetes complications, diabetic kidney disease ($\geq 30\%$ decline in eGFR; $n = 79$), and diabetic retinopathy (mild, moderate or severe; $n = 111$) were predicted (II). Median follow-up was 5.4 years.

	All participants (n = 383)	Non- progressors (n = 193)	Retinopathy and Kidney disease (n = 190)	Retinopathy (n = 111)	≥30% decline in eGFR(n = 79)	p-values
Female, n (%)	171 (44.6)	86 (44.6)	85 (44.7)	48 (43.2)	35 (44.3)	0.99
Age, years	54.77 ± 13.7	52.84 ± 13.6	54.98 ± 13.6	52.76 ± 13.6	56.12 ± 13.3	0.48
Diabetes duration, years	30.38 ± 16.9	28.29 ± 16.5	32.10 ± 16.5	27.85 ± 15.9	35.47 ± 14.94	0.41
HbA _{1c} , % (mmol/mol)	8.00 ± 1.2	7.60 ± 1.0	8.45 ± 1.3	8.44 ± 1.2	8.68 ± 1.3	0.27
BMI, kg/m ²	24.65 ± 3.8	23.99 ± 3.5	25.64 ± 3.9	25.55 ± 3.9	25.97 ± 4.3	0.62
Systolic BP, mmHg	130 ± 19.4	125.00 ± 17.11	136.04 ± 20.64	131.48 ± 15.7	141.59 ± 19.8	0.61
eGFR, ml min ⁻¹ 1.73 m ²	88.68 ± 27.1	95.55 ± 22.0	78.55 ± 28.9	86.24 ± 26.9	66.33 ± 29.1	0.88
Triglycerides, mmol/L	0.96 ± 0.7	0.89 ± 0.5	1.24 ± 0.8	1.13 ± 0.6	1.39 ± 0.9	0.88
Total cholesterol, mmol/L	4.7 ± 0.9	4.70 ± 0.8	4.82 ± 1.0	4.72 ± 0.9	4.87 ± 1.1	0.65
LDL-cholesterol, mmol/L	2.4 ± 27.1	2.30 ± 0.7	2.59 ± 0.8	2.59 ± 0.8	2.55 ± 0.9	0.94
HDL-cholesterol, mmol/L	1.62 ± 0.5	1.68 ± 0.6	1.64 ± 0.5	1.61 ± 0.5	1.67 ± 0.6	0.56
Smokers, n(%)	75 (19.6)	39 (20.2)	36 (18.9)	16 (14.4)	19 (24.1)	0.29
Statin treatment, n (%)	200 (52.2)	84 (43.5)	117 (61.6)	61 (54.9)	61 (77.2)	0.002
AHT treatment, n (%)	238 (62.1)	96 (49.7)	142 (74.7)	73 (65.8)	73 (92.4)	9.69 × 10 ⁻¹²
Previous CVD, n (%)	67 (17.5)	20 (10.4)	47 (24.7)	16 (14.4)	26 (32.9)	1.66 × 10 ⁻⁰⁵
Albuminuria, n (%)						
Normal	215 (56.1)	148 (76.7)	67 (35.3)	51 (45.9)	9 (11.4)	2.20 × 10 ⁻¹⁶
Micro	104 (27.2)	45 (23.3)	59 (31.0)	37 (33.3)	18 (22.8)	
Macro	64 (16.7)	-	64 (33.7)	23 (20.7)	52 (65.8)	
Retinopathy status, n (%)						
None apparent	126 (32.9)	75 (38.9)	51 (26.8)	-	14 (17.7)	2.20 × 10 ⁻¹⁶
Mild non-proliferative	68 (17.6)	35 (18.1)	33 (17.4)	44 (39.6)	4 (5.1)	
Moderate non-proliferative	125 (32.6)	83 (43.0)	42 (22.1)	31 (27.9)	20 (25.3)	
Proliferative	32 (8.3)	-	32 (16.8)	17 (15.3)	15 (18.9)	
Proliferative with fibrosis	26 (6.8)	-	26 (13.7)	19 (17.1)	26 (32.9)	
Blind	6 (1.6)	-	6	-	-	

Table 1: Comparison of baseline clinical characteristics of combined diabetes complications, diabetic retinopathy, and diabetic kidney disease groups.
Data are expressed as Mean ±SD or n (%). eGFR, estimated Glomerular Filtration Rate; LDL, low-density lipoprotein; HDL, high-density lipoprotein; AHT, antihypertensive treatment; CVD, cardiovascular disease. Statistics: Anova test was used for continues variables, and χ^2 test was used for categorical variables.

and a standard deviation of 0.17. An individual decision tree for classifying the retinopathy model based clinical dataset is shown in [Figure 4b](#).

Feature importance and personalized individual risk predictions of DKD, progressors versus non-progressors, were examined further ([Figure 2g](#)). The first force plot shows a stable individual without progression to DCs and correctly predicted as a non-progressor by the model: the predicted probability of progression was 2%. The second force plot shows an individual correctly predicted as progressor with the probability of 84%. In more detail, the SHAP values of individual participants emphasize variables that most strongly contribute to the prediction, with red and blue colors, respectively, indicating risk factors and protective factors. For instance, with the second individual predicted as DKD progressor, albuminuria, mild degree of retinopathy, and eGFR played an important role in the prediction: albuminuria was the most important risk factor as determined by the color (red) and the length of the respective bar. In contrast, the first individual was predicted to remain free of

DKD based on young age, normo-albuminuria, no retinopathy, and a relatively high eGFR, all contributing to the very low probability, 2%, of DKD progression.

Omics and clinical profile-based biomarkers in the prediction of diabetes complications. The optimal model for any progression in DCs was obtained by combining three clinical baseline variables –albuminuria, mild degree of retinopathy and HbA_{1c} – with seven metabolites – 3,4-Dihydroxybutanoic acid, SM(d30:1), meso-Erythritol, Cer(d42:0), one unidentified metabolite and two unidentified lipid species ([Figure 3a](#)). This final model with SHAP-selected clinical variables and omics features had a mean AUROC of 0.89 (95% CI 0.818;0.966), accuracy of 0.83, precision of 0.90, F1-score of 0.81, and recall of 0.73 in the validation set ([Figure 3d](#)). The 100 AUROC values obtained in MC had a mean of 0.84, and a standard deviation of 0.11.

The best model for DKD was obtained by combining four clinical baseline variables: albuminuria, mild

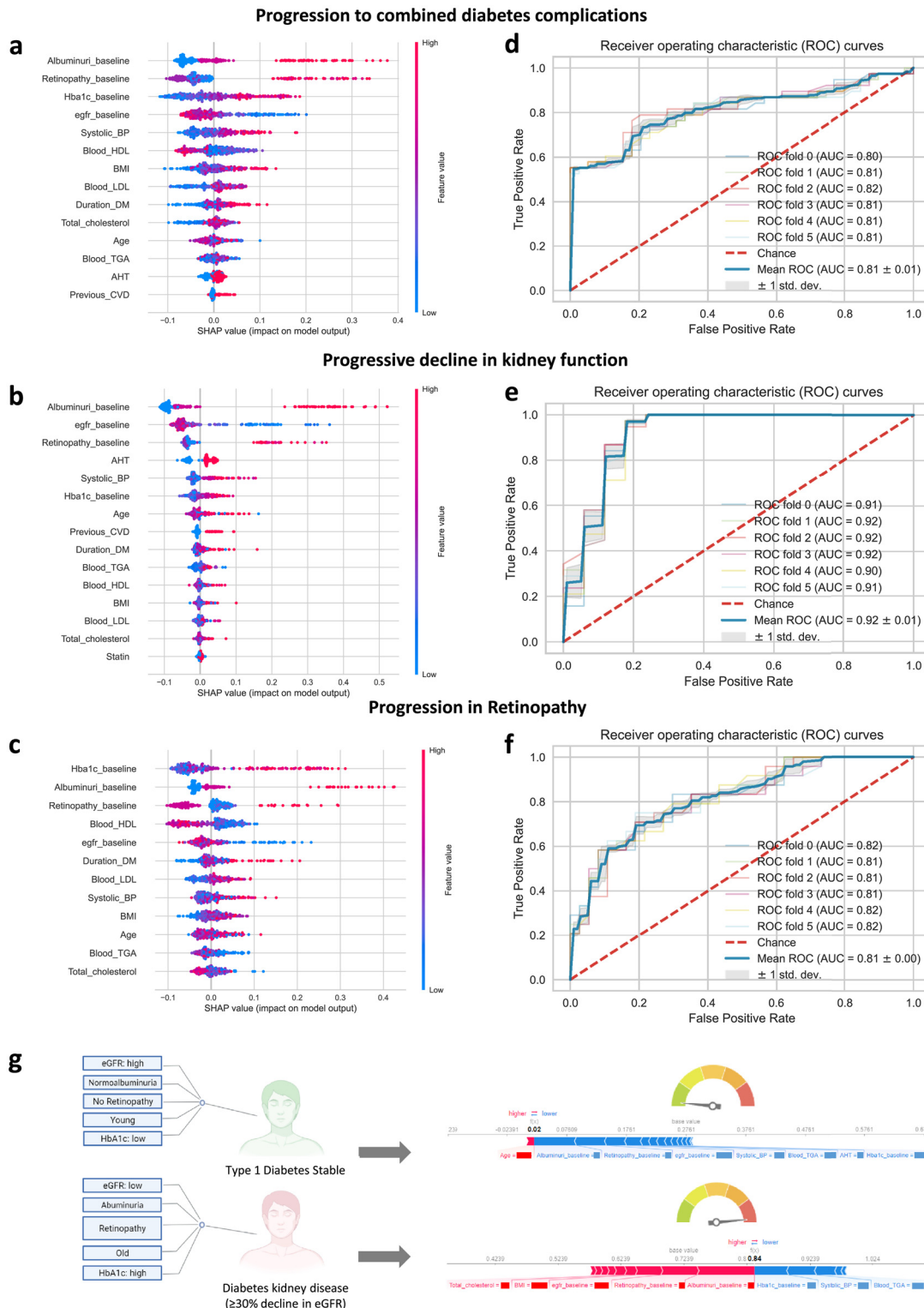


Figure 2. Models based clinical features. (a–c) Subset of a dot plot showing the directional mean absolute SHAP values of features (x axis) computed from five-fold cross-validation models that predict metabolite levels (y axis) using clinical data. Positive and negative SHAP values represent positive and negative impact on the predicted risk of progression to combined DCs (A), ≥30% decline in eGFR (b), and retinopathy (c), respectively in the validation sets. Positive (negative) SHAP values indicate that higher

degree of retinopathy, eGFR and HbA_{1c}, and two ketones and three sugar derivatives: 3,4-dihydroxybutanoic acid, 2,4-dihydroxybutanoic acid, ribitol, ribonic acid, myo-inositol, and one unidentified metabolite (Figure 3b). The model demonstrated an excellent performance, with mean AUROC=0.99 (95% CI 0.876;0.997), accuracy of 0.98, precision of 1.00, F1-score of 0.96, and recall of 0.92 (Figure 3e). The 100 AUROC values obtained in MC had a mean of 0.97, and a standard deviation of 0.05.

The best performing model for DR was based on seven metabolites: Cer(d42:0), 3,4-Dihydroxybutanoic acid, the same unidentified metabolite as in the model above, and four unidentified lipid species together with HbA_{1c}, albuminuria, and mild degree of retinopathy (Figure 3c). The mean AUROC was 0.87 (95% CI 0.781;0.996) with an accuracy of 0.80, precision of 0.68, F1-score of 0.71, and recall of 0.75 (Figure 2f). The 100 AUROC values obtained in MC had a mean of 0.87, and a standard deviation of 0.10. Two additional decision trees for the omics and clinical-based models were created and added as Supplementary Figure (S1).

Both models with and without adding blood small-molecules provided a good discrimination to predict DCs. The recall of the models with clinical variables indicates that 80% and 50%, respectively, were correctly identified as progressors to $\geq 30\%$ decline in eGFR and any retinopathy. In models with, both, clinical variables and small molecules, 92% and 80% were correctly identified as progressors to $\geq 30\%$ decline in eGFR and any retinopathy, respectively.

The *t*-test for model comparisons (with and without adding small-molecules) for DCs, DKD, and DR were 3.004×10^{-15} , 0.393, and 1.258×10^{-04} , respectively.

The sensitivity analysis was done by evaluating the performance of the models with metabolites and lipids by excluding one metabolites or lipids at a time (see supplementary Tables (S4 and S5) for performance measurements).

Discussion

In the present study, we developed high-performing prediction models with random forest ML algorithms

utilizing clinical risk factors and omics profiles from plasma samples of persons with type 1 diabetes. Our objective was to predict progression of (1) combined diabetes complications, (2) diabetic kidney disease, defined as $\geq 30\%$ decline in eGFR, and (3) retinopathy defined as progression in retinopathy severity over 5 years. DR and DKD are two types of microvascular complications and have a relatively high co-occurrence in T1D, which on the other hand could point to a basis that is partly shared. Our hypothesis was that the biomarkers selected in the joint DKD and DR model could represent this partly shared basis.

Using only clinical risk factors for training the models, AUROC of 0.81, 0.92, and 0.81 were obtained for combined DCs, DKD, and DR respectively (Figure 2d–f). The models based on the clinical risk profile accurately predicted the future progression of DCs in individuals with type 1 diabetes. Moreover, prediction improved by the inclusion of blood biomarkers from the omics data (Figure 3d–f). Including a molecular profile to the predictive panel may be useful for the implementation of detailed personalized medicine tools in the clinic. However, molecular panels need further investigation, including the testing of clinical utility with clinical trials.¹³

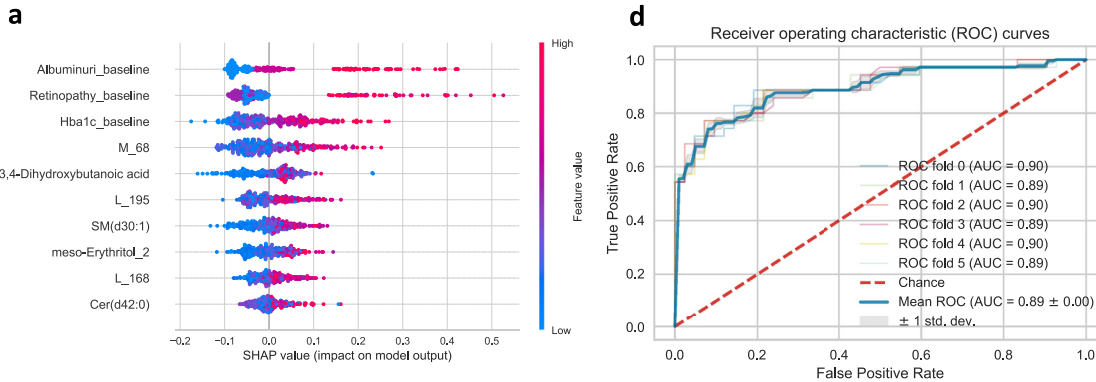
The models with clinical risk factors were obtained with routinely collected data (such as HbA_{1c}, albuminuria and eGFR) all known risk factors of microvascular complications in diabetes.^{4,31} Albuminuria, eGFR and retinopathy status at baseline were the main predictors for $\geq 30\%$ decline in eGFR progression. Similarly, HbA_{1c}, albuminuria, and retinopathy status were main predictors for progression to DR.

In our models, baseline DR was one of the top three variables of importance for predicting future DKD. The association of diabetes nephropathy and DR has been addressed in several previous studies,^{32–35} confirming the plausibility of the three main predictors over other clinical factors.

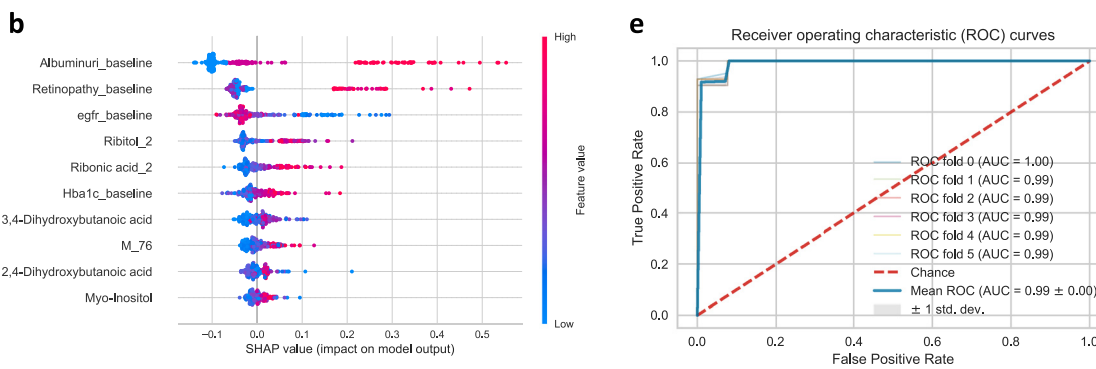
Overall, we identified eight small biomolecules from the models with clinical risk factors and blood-derived molecular data that were strongly predictive of DCs. The metabolite signature to predict $\geq 30\%$ decline in eGFR included two short chain ketones (3,4-dihydroxybutanoic acid and 2,4-dihydroxybutanoic acid) and three

(lower) feature values lead to higher predicted probability of progression. Each plot is made up of individual points from the validation dataset with a higher value being red and a lower value being blue. (d–f) AUROC, mean and SD of the result from model based on the main predictors. The 100 AUROC values for combined diabetes complications, diabetic kidney disease, and diabetic retinopathy obtained in MC had a mean and SD of 0.68 ± 0.11 , 0.95 ± 0.11 , and 0.79 ± 0.17 , respectively (not shown). (g) Force plots showing effect of SHAP values at the individual level performance of randomly predicted outputs (type 1 diabetes stable and type 1 diabetes with progression to $\geq 30\%$ eGFR decline). Features in red represent the higher values and show risk factors pushing up the overall probability while blue represent the lower values and are protective factors. Feature labels are: **Retinopathy_baseline** (1= None apparent, 2= Mild non-proliferative, 3= Moderate non-proliferative); **Albuminuri_baseline** (1=normoalbuminuria, 2=microalbuminuria, 3=macroalbuminuria); **Previus_CVD** (1=yes); **AHT** (1=yes); **Statin** (1=yes).

Progression to combined diabetes complications



Progressive decline in kidney function



Progression in Retinopathy

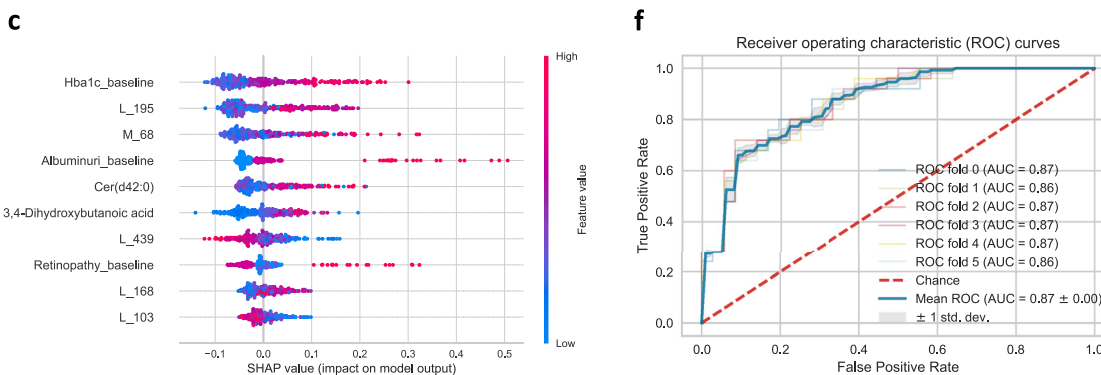


Figure 3. Models based clinical and omics features. (a–c) Subset of a dot plot showing the directional mean absolute SHAP values of various features (x axis) computed from five-fold cross-validation models that predict metabolite levels (y axis) using clinical data. Positive and negative SHAP values represent positive and negative impact on the predicted risk of progression to combined diabetes complications (a), $\geq 30\%$ decline in eGFR (b), and retinopathy (c), respectively in the validation sets. Positive (negative) SHAP values indicate that higher (lower) feature values lead, on average, to higher predicted values. Each plot is made up of individual points from the validation dataset with a higher value being red and a lower value being blue. Shown are the top features by maximum mean absolute SHAP values across all clinical data. (d–f) AUROC, mean and SD result from model based on the main predictors. The 100 AUROC values for combined diabetes complications, diabetic kidney disease, and diabetic retinopathy obtained in MC had a mean and SD of 0.84 ± 0.11 , 0.97 ± 0.05 , and 0.87 ± 0.10 , respectively (not shown). Feature labels are: **Retinopathy_baseline** (1= Noneapparent, 2= Mild non-proliferative, 3= Moderate non-proliferative); **Albuminuri_baseline** (1=normoalbuminuria, 2=microalbuminuria, 3=macroalbuminuria).

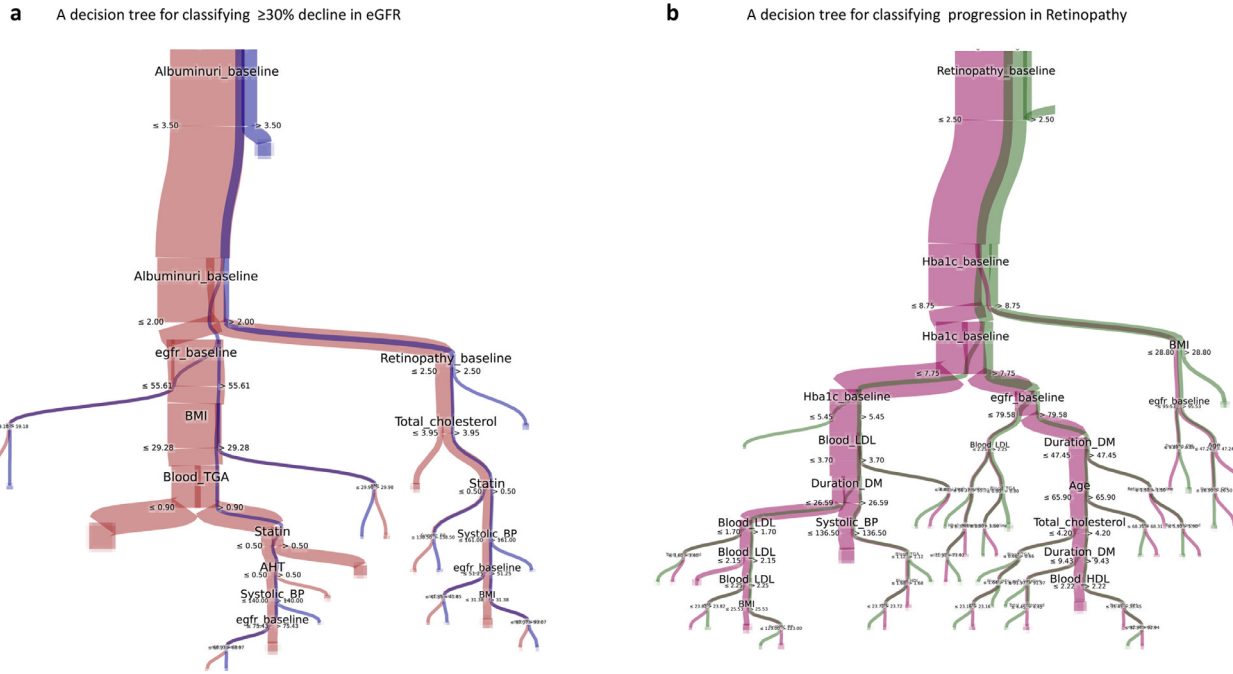


Figure 4. Visualization of random forest models based clinical features. **a**, Graph showing an example of a tree computed using random forest. It is one example out of the 500 computed decision trees for classifying the clinic dataset for predicting $\geq 30\%$ decline in eGFR. **b**, an example of one out of the 500 decision trees for classifying the clinic dataset for predicting retinopathy. Each class is represented by a color (brown and blue in **a**, and purple and green in **b**), the width of the link represents the number items flowing from one node to the other.

sugar derivatives (myo-inositol, ribitol, and ribonic acid). Ribitol and ribonic acid were the main metabolite predictors (Figure 3c). Ribonic acid and ribitol are sugar acid derivatives from ribose and are involved in the pentose phosphate pathway. In accordance with the present results, elevated levels of ribitol are associated with retinal cell apoptosis in DR.³⁶ Moreover, elevated levels of ribitol and myo-inositol in chronic kidney disease stages 3-5 have been reported.³⁷

Myo-inositol is involved in inositol metabolism and is primarily synthesized in the kidneys at a rate of a few grams per day in humans. The overexpression of myo-inositol oxygenase has been suggested to drive the progression of renal tubulointerstitial injury in a mouse model of diabetes.³⁸ Previous results in type 2 diabetes also showed that higher levels of myo-inositol were associated with a higher risk of end stage renal disease.^{38,39} In the present study, we show that higher levels of myo-inositol were predictive of $\geq 30\%$ decline in eGFR (Figure 3b).

The metabolite signature to predict retinopathy progression included 3,4-dihydroxybutanoic acid and a saturated ceramide (Cer(d42:0)). An earlier metabolomics study by Chen et al. identified 3,4-dihydroxybutanoic acid as a novel biomarker for DR.⁴⁰ Ceramides are sphingolipids, which are active in cell-signaling processes, also associated with the pathogenesis of diabetes, insulin resistance and heart disease.^{41,42} In the present study, DR progressors showed increased levels of Cer(d42:0) and 3,4-dihydroxybutanoic acid at baseline when compared with non-progressors with diabetes (Figure 3b).

Evidence from the present study shows that prediction models based on variables routinely collected in the clinic can be excellent predictors of individual prognosis. The results suggest that the measurement of relevant biomolecules from the circulation can further improve the accuracy of these predictions. When significance was calculated between the clinical only and the models including metabolites, the model for CKD prediction was not significant ($P = 0.393$). In this case the clinical metadata collected routinely is also highly predictive with RF, paving the path for a simplified model that can readily with further validation be trialed in the clinic. Furthermore, we argue that biomolecules may be necessary for a more fine-grained understanding and prediction of complications, which will be necessary for personalized medicine in practice.

In previous studies from other cohorts we have seen other omics-based markers associated to progression of kidney disease using urinary proteomics.⁴³⁻⁴⁵ The proteomics panel used in these studies is enriched with collagen proteins, which reflect changes in the extracellular matrix, including the proliferation of fibrosis. The metabolomic fingerprint reported in the present study, is heavy with sugar derivatives, indicating a stronger link to glucose control. On the other hand, the

lipids from the sphingolipid pathway could be a link to macrovascular complications.⁴⁵ In the future, it will be interesting to investigate whether the combination of complementary omics panels from two biofluids could improve prediction.

Strengths and limitations

Our study benefits from a large and comprehensive dataset with a good representation of individuals who progressed to two different DCs. This allowed us to test, both, routinely collected clinical data as well as molecules that are measured with advanced mass-spectrometry.

The ML models with and without omics were robust with stable performance across the cross-validation. Yet, a limitation is that the study was based on a single cohort, although this was attenuated in part by the model being validated on unseen data representing twenty percent of the cohort. Therefore, replication in a clinical trial will be of substantial interest and necessary for implementing this tool for clinical decision making.⁹ While the models were acquired in a relatively large and well-characterised cohort of persons with T1D, further validation in independent longitudinal cohorts is warranted. Except for the outcomes of DCs, the predictor data were restricted to a snapshot baseline profile. Therefore, longitudinal tracking of molecular data could contribute to more accurate and robust prediction. The metabolites reported here were annotated from the in-house database at Steno Diabetes Center Copenhagen, which is curated with spiked internal standards. However, in this non-targeted metabolomics approach of several hundred compounds, there may be false positive annotations since every detected compound was not accompanied with identical labeled standard.

According to a newly-published report from the American Diabetes Association (ADA) and European Association for the Study of Diabetes (EASD),¹ advanced data and algorithms are expected to contribute to better clinical decision making. Predicting DCs before their onset is very challenging in real-world clinical practice, and early detection can have major implications on the quality and length of life. Our aim is to further increase the understanding of how individuals with diabetes progress towards harmful complications. We believe that ML-based high-performing predictive models will support clinicians in these challenging decisions.

In conclusion, we have demonstrated that ML algorithms using traditional risk factors can successfully predict future progression of DCs in type 1 diabetes. The inclusion of omics data further improved the predictions. We believe that with further development and validation, the prediction models presented here have the potential for early detection of complications, thus enabling appropriate interventions to be taken to prevent further progression of these complications.

Contributors

N.A., C.L.Q., P.R., and D.M. conceived the study concept and design. T.S. and P.H. contributed to data curation. N.A., S.K., D.M., and C.L.Q. contributed to development of methodology. N.A. and S.K. performed the data analysis. N.A. drafted the manuscript. N.A. and T.S. accessed and verified the data. C.L.Q. took the decision to submit the manuscript. All authors critically revised the manuscript and approved the final version. P.R., F.P., and C.L.Q. contributed to funding acquisition. C.L.Q. is guarantor of this work and, as such, had full access to all the data in the study and takes responsibility for the integrity of the data and the accuracy of the analysis.

Data sharing statement

Data are available on request for researchers who have acquired the required legal permissions from the Danish data protection agency. Requests to access the datasets should be directed to PR, peter.rossing@regionh.dk. The ML script has been deposited in a GitHub repository (available here: <https://git.io/JD5A2>) to improve reproducibility and transparency.

Declaration of interests

The authors declare no potential conflicts of interests relevant to this manuscript. Outside this manuscript PR reports consultancy and/or speaking fees to Steno Diabetes Center Copenhagen from Astellas, AstraZeneca, Bayer, Boehringer Ingelheim, Gilead, Eli Lilly, MSD, Novo Nordisk Vifor, and Sanofi Aventis and research grants from AstraZeneca and Novo Nordisk.

Acknowledgments

We thank all participants of the study. We thank the laboratory technicians at Steno Diabetes Center Copenhagen, Gentofte, Denmark, for their excellent technical assistance. We acknowledge the support from the Novo Nordisk Foundation Challenge grant PROTON (Personalized treatment of diabetic nephropathy) NNF14OC0013659. This project was funded by the Novo Nordisk Foundation grant NNF14OC0013659 “PROTON Personalizing treatment of diabetic nephropathy”. Internal funding was provided by Steno Diabetes Center Copenhagen, Gentofte, Denmark. The funder had no role in study design, data collection and analysis, decision to publish, or preparation of the manuscript.

Supplementary materials

Supplementary material associated with this article can be found in the online version at doi:[10.1016/j.ebiom.2022.104032](https://doi.org/10.1016/j.ebiom.2022.104032).

References

- Chung WK, Erion K, Flores CF, et al. Precision medicine in diabetes: a consensus report from the American Diabetes Association (ADA) and the European Association for the study of diabetes (EASD). *Diabetes Care*. 2020;43:1617–1635.
- Avogaro A, Fadini GP. Microvascular complications in diabetes: a growing concern for cardiologists. *Int J Cardiol*. 2019;291:29–35.
- Forbes JS, Cooper ME. Mechanisms of diabetic complications. *Physiol Rev*. 2013;93:137–188.
- Rossing P, Pedersson F, Frimodt-Møller M, Hansen TW. Linking kidney and cardiovascular complications in diabetes-impact on prognostication and treatment: the 2019 Edwin Bierman Award Lecture. *Diabetes*. 2021;70:39–50.
- Marciano D.P., Snyder M.P. Personalized metabolomics. methods in molecular biology 2019;447–456.
- Afshinnia F, Rajendiran TM, He C, et al. Circulating free fatty acid and phospholipid signature predicts early rapid kidney function decline in patients with type 1 diabetes. *Diabetes Care*. 2021;84:dc210737.
- Wigger L, Barovic M, Brunner AD, et al. Multi-omics profiling of living human pancreatic islet donors reveals heterogeneous beta cell trajectories towards type 2 diabetes. *Nat Metab*. 2021;3:1017–1031.
- Guasch-Ferré M, Hruba A, Toledo E, et al. Metabolomics in prediabetes and diabetes: a systematic review and meta-analysis. *Diabetes Care*. 2016;39:833–846.
- Gou W, Ling CW, He Y, et al. Interpretable machine learning framework reveals robust gut microbiome features associated with type 2 diabetes. *Diabetes Care*. 2021;44:358–366.
- Adlung L, Cohen Y, Mor U, Elinav E. Machine learning in clinical decision making. *Cell Press*. 2021;2:1–24.
- Segar MW, Vaduganathan M, Patel KV, et al. Machine learning to predict the risk of incident heart failure hospitalization among patients with diabetes: the WATCH-DM risk score. *Diabetes Care*. 2019;12:2298–2306.
- Gulshan V, Peng L, Coram M, et al. Development and validation of a deep learning algorithm for detection of diabetes retinopathy in retinal fundus photographs. *J Am Med Assoc*. 2016;22:2402–2410.
- Vistisen D, Andersen GS, Hulman A, et al. A validated prediction model for end-stage kidney disease in type 1 diabetes. *Diabetes Care*. 2021;44:901–907.
- Theilade S, Lajer M, Hansen TW, Rossing P. Pulse wave reflection is associated with diabetes duration, albuminuria and cardiovascular disease in type 1 diabetes. *Acta Diabetol*. 2014;52:973–980.
- Curovic VR, Suvitaival T, Mattila I, et al. Circulating metabolites and lipids are associated to diabetic retinopathy in individuals with type 1 diabetes. *Diabetes*. 2020;69:2217–2226.
- Tofte N, Suvitaival T, Ahonen L, et al. Lipidomic analysis reveals sphingomyelin and phosphatidylcholine species associated with renal impairment and all-cause mortality in type 1 diabetes. *Sci Rep*. 2019;9:16398.
- Tofte N, Suvitaival T, Trost K, et al. Metabolomic assessment reveals alteration in polyols and branched chain amino acids associated with present and future renal impairment in a discovery cohort of 637 persons with type 1 diabetes. *Front Endocrinol*. 2019;10:818.
- Coresh J, Turin TC, Matsushita K, et al. Decline in estimated glomerular filtration rate and subsequent risk of end-stage renal disease and mortality. *JAMA*. 2014;311:2518–2531.
- Al-Sari N, Suvitaival T, Mattila I, et al. Lipidomics of human adipose tissue reveals diversity between body areas. *PLoS One*. 2020 (15) e0228521.
- Al-Sari N, Schmidt S, Suvitaival T, et al. Changes in the lipidome in type 1 diabetes following low carbohydrate diet: post-hoc analysis of a randomized crossover trial. *Endocrinol Diabetes Metab*. 2021;4(2):e00213.
- Pedersen HK, Gudmundsdottir V, Nielsen HB, et al. Human gut microbes impact host serum metabolome and insulin sensitivity. *Nature*. 2016;535(535):376–381.
- Proitsi P, Kim M, Whitley L, et al. Association of blood lipids with Alzheimer's disease: a comprehensive lipidomics analysis. *Alzheimers Dement*. 2017;13:140–151.
- Breiman L. Random forests. *Mach Learn*. 2001;45:5–32.

- 24 Pedregosa F, Varoquaux G, Gramfort A, et al. Scikit-learn: machine learning in python. *J Mach Learn Res*. 2011;12:2825–2830.
- 25 Van den Elzen S, BoababView JJ. Interactive construction and analysis of decision trees. In: *Proceedings of the IEEE Conference on Visual Analytics Science and Technology (VAST)*. 2011:151–160.
- 26 Lundberg SM, Nair B, Vavilala MS, et al. Explainable machine-learning predictions for the prevention of hypoxaemia during surgery. *Nat Biomed Eng*. 2018;2:749–760.
- 27 Stamate D, Katrinecz A, Stahl D, et al. Identifying psychosis spectrum disorder from experience sampling data using machine learning approaches. *Schizophr Res*. 2019;209:156–163.
- 28 Stamate D, Kim M, Proitsi P, et al. A metabolite-based machine learning approach to diagnose Alzheimer-type dementia in blood: results from the European Medical Information Framework for Alzheimer disease biomarker discovery cohort. *Alzheimer's Dement*. 2019;5:933–938.
- 29 Hummel J, Selbig J, Walther D, Kopka J. The Golm metabolome database: a database for GC-MS based metabolite profiling. *Springer Berlin Heidelberg*. 2007;18:75–96.
- 30 Fahy E, Sud M, Cotter D, Subramaniam S. LIPID MAPS® online tools for lipid research. *Nucleic Acids Res*. 2007;35:W606–W612. Available from; <https://www.lipidmaps.org>.
- 31 Zhang J, Wang Y, Li L, et al. Diabetic retinopathy may predict the renal outcomes of patients with diabetic nephropathy. *Ren Fail*. 2018;40:243–251.
- 32 Karlberg C, Falk C, Green A, et al. Proliferative retinopathy predicts nephropathy: a 25-year follow-up study of type 1 diabetic patients. *Acta Diabetol*. 2012;49:263–268.
- 33 Bjerg L, Hulman A, Charles M, et al. Clustering of microvascular complications in type 1 diabetes mellitus. *J Diabetes Complicat*. 2018;32:393–399.
- 34 Marques IP, Madeira MH, Messias AL, et al. Different retinopathy phenotypes in type 2 diabetes predict retinopathy progression. *Acta Diabetol*. 2021;58:197–205.
- 35 Hung CC, Lin HYH, Hwang DY, et al. Diabetic retinopathy and clinical parameters favoring the presence of diabetic nephropathy could predict renal outcome in patients with diabetic kidney disease. *Sci Rep*. 2017;7:1236.
- 36 Mazumder AG, Chatterjee S, Gonzalez JJ, et al. Spectroscopy-corroborated multimodal quantitative imaging biomarkers for neuroretinal degeneration in diabetic retinopathy. *Clin Ophthalmol*. 2017;11:2073–2089.
- 37 Vanlede K, Kluijtmans LAJ, Monnens L, Levchenko E. Urinary excretion of polyols and sugars in children with chronic kidney disease. *Pediatr Nephrol*. 2015;30:1537–1540.
- 38 Sharma I, Deng F, Liao Y, Kanwar YS. Myo-inositol oxygenase (MIOX) overexpression drives the progression of renal tubulointerstitial injury in diabetes. *Diabetes*. 2020;69:1248–1263.
- 39 Niewczas MA, Sirich TL, Mathew AV, et al. Uremic solutes and risk of end-stage renal disease in type 2 diabetes: metabolomic study. *Kidney Int*. 2014;85:1214–1224.
- 40 Chen L, Cheng CY, Choi H, et al. Plasma metabolomic profiling of diabetic retinopathy. *Diabetes*. 2016;65:1099–1108.
- 41 Summers SA. Could ceramides become the new cholesterol? *Cell Metab*. 2018;6:276–280.
- 42 Kurz J, Parnham MJ, Geisslinger G, Schiffman S. Ceramides as novel disease biomarkers. *Trends Mol Med*. 2019;25:20–32.
- 43 Tofte N, Lindhardt M, Adamova K, et al. Early detection of diabetic kidney disease by urinary proteomics and subsequent intervention with spironolactone to delay progression (PRIORITY): a prospective observational study and embedded randomised placebo-controlled trial. *Lancet Diabetes Endocrinol*. 2020;8(4):301–312.
- 44 Curovic VR, Magalães P, He T, et al. Urinary peptidome and diabetic retinopathy in the DIRECT-protect 1 and 2 trials. *Diabet Med*. 2022;38(9):14634.
- 45 Choi RH, Tatum SM, Symons JD, et al. Ceramides and other sphingolipids and drivers of cardiovascular disease. *Nat Rev Cardiol*. 2022;18:701–711.