

RESEARCH

Open Access



Long-term outcome in ICU patients with acute kidney injury treated with renal replacement therapy: a prospective cohort study

Wouter De Corte^{1,2*}, Annemieke Dhondt³, Raymond Vanholder³, Jan De Waele^{1,4}, Johan Decruyenaere¹, Veerle Sergoyne⁵, Joke Vanhalst⁶, Stefaan Claus³ and Eric A. J. Hoste^{1,4}

Abstract

Background: In intensive care unit (ICU) patients, acute kidney injury treated with renal replacement therapy (AKI-RRT) is associated with adverse outcomes. The aim of this study was to evaluate variables associated with long-term survival and kidney outcome and to assess the composite endpoint major adverse kidney events (MAKE; defined as death, incomplete kidney recovery, or development of end-stage renal disease treated with RRT) in a cohort of ICU patients with AKI-RRT.

Methods: We conducted a single-center, prospective observational study in a 50-bed ICU tertiary care hospital. During the study period from August 2004 through December 2012, all consecutive adult patients with AKI-RRT were included. Data were prospectively recorded during the patients' hospital stay and were retrieved from the hospital databases. Data on long-term follow-up were gathered during follow-up consultation or, in the absence of this, by consulting the general physician.

Results: AKI-RRT was reported in 1292 of 23,665 first ICU admissions (5.5 %). Mortality increased from 59.7 % at hospital discharge to 72.1 % at 3 years. A Cox proportional hazards model demonstrated an association of increasing age, severity of illness, and continuous RRT with long-term mortality. Among hospital survivors with reference creatinine measurements, 1-year renal recovery was complete in 48.4 % and incomplete in 32.6 %. Dialysis dependence was reported in 19.0 % and was associated with age, diabetes, chronic kidney disease (CKD), and oliguria at the time of initiation of RRT. MAKE increased from 83.1 % at hospital discharge to 93.7 % at 3 years. Multivariate regression analysis showed no association of classical determinants of outcome (preexisting CKD, timing of initiation of RRT, and RRT modality) with MAKE at 1 year.

Conclusions: Our study demonstrates poor long-term survival after AKI-RRT that was determined mainly by severity of illness and RRT modality at initiation of RRT. Renal recovery is limited, especially in patients with acute-on-chronic kidney disease, making nephrological follow-up imperative. MAKE is associated mainly with variables determining mortality.

Keywords: Acute kidney injury (AKI), Long-term survival, Major adverse kidney events (MAKE), Renal recovery, Renal replacement therapy (RRT), Modality of renal replacement therapy, Timing of renal replacement therapy, Acute-on-chronic kidney failure

* Correspondence: wouter.decorte@azgroeninge.be

¹Department of Intensive Care Medicine, Ghent University Hospital, De Pintelaan 185, 9000 Gent, Belgium

²Department of Anesthesia and Intensive Care Medicine, AZ Groeninge Hospital, Kortrijk, Belgium

Full list of author information is available at the end of the article



Background

Acute kidney injury (AKI) is a frequent finding in intensive care unit (ICU) patients, with a prevalence of approximately 40–57 % when defined according to the Kidney Disease: Improving Global Outcomes (KDIGO) criteria. AKI treated with renal replacement therapy (AKI-RRT) occurs in approximately 13 % of ICU patients [1, 2]. It is associated with adverse outcomes such as increased length of stay, short- and long-term mortality, and end-stage renal disease (ESRD). In the past, AKI was considered a surrogate marker for severity of illness, and patient mortality was considered a consequence of the underlying disease [3]. However, there is an abundance of epidemiological data demonstrating that AKI in itself leads to adverse outcomes. This is so for the most severe form of AKI, where patients are treated with RRT [4, 5]. In addition, small decreases in kidney function are associated with increased short-term mortality. Further, the prevalence of preexisting chronic kidney disease (CKD) is increasing among patients admitted to the ICU. CKD may lower the threshold for developing AKI, and acute-on-chronic kidney disease is associated with adverse outcomes [3–7]. Further, even mild AKI may predispose patients to CKD, and thus it increases the risk of subsequent AKI events and finally ESRD [8–10]. So, AKI can be considered both the cause and the consequence of CKD, and AKI and CKD therefore are considered interconnected and integrated syndromes [6].

The association of CKD with mortality remains a matter of debate. On one hand, a recent large registry study demonstrated an association of CKD and death [7]. On the other hand, critically ill patients with AKI-RRT who had CKD were reported to have lower short-term mortality than those without preexisting CKD [9, 11–14]. Another factor that may impact long-term outcomes is modality of RRT. Observational studies suggest that continuous RRT (CRRT) is associated with better kidney outcomes, more specifically with less need for chronic dialysis [8, 9]. However, prospective randomized studies could not demonstrate a survival benefit of CRRT compared with intermittent therapies [10, 11]. Finally, optimal timing of initiation of RRT is unclear. RRT is initiated early in the absence of serious complications of AKI and may therefore have some advantages. The late and more conservative approach takes into account that some patients with severe AKI might recover kidney function spontaneously without starting RRT, thereby avoiding adverse events linked to RRT [12].

Until recently, studies of AKI in ICU patients were focused on conventionally accepted short-term outcomes such as mortality at day 30 or at ICU and hospital discharge. However, these endpoints may underestimate the true burden of kidney disease. In light of the increasing focus on long-term outcomes, researchers in several

studies have investigated the links between AKI, CKD, and ESRD [13, 14]. By way of analogy to major adverse cardiovascular events, this led to the introduction of the composite endpoint major adverse kidney events (MAKE) [15]. MAKE is a composite of death, ESRD needing dialysis, and incomplete kidney recovery, defined as a 25 % decrease of estimated glomerular filtration rate (eGFR), measured at long-term endpoints such as 90 days or 1 year. The aim of the present study was to describe long-term patient and kidney outcomes in a cohort of patients with AKI-RRT and to assess possible modifying factors of outcome, such as CKD, timing of initiation of RRT, and RRT modality.

Methods

We conducted a single-center prospective cohort analysis of patients with AKI-RRT at the ICU of the Ghent University Hospital over an 8-year period (October 2004–October 2012). The Ghent University Hospital ICU consists of a 22-bed surgical ICU, a 14-bed medical ICU, an 8-bed cardiac surgery ICU, and a 6-bed burn ICU.

Study cohort

The inclusion criteria were ICU patients aged ≥ 15 years who had AKI and were treated with RRT and who had follow-up data after hospital discharge. During the study period, an electronic patient data management system (PDMS) was gradually introduced. Only patients who were registered in the PDMS were included in the study [16]. Exclusion criteria were extracorporeal blood purification techniques for reasons other than AKI, patients with CKD receiving chronic RRT, RRT initiated before admission to the ICU, and RRT immediately after kidney transplant. In cases where a patient had several ICU episodes of AKI-RRT during the same hospital admission, we considered only the first episode.

Indications for RRT, as well as the modality chosen (i.e., intermittent hemodialysis [IHD], duration 2–4 h per treatment session; slow extended daily dialysis [SLEDD], duration 6–12 h per treatment session; or CRRT [continuous venovenous hemofiltration or hemodialysis]), were determined by consensus between the attending intensivists and nephrologists and based on the clinical status of the patient (fluid balance, respiratory status, acid-base balance). Continuous modalities are preferentially used in patients with severe shock, patients who are at risk for cerebral edema (e.g., liver cirrhosis), or patients for whom fluid removal is pursued [17].

Definitions

Reference serum creatinine was either a baseline serum creatinine concentration obtained from the laboratory database within a 12-month period prior to hospital admission or, if unavailable, serum creatinine at the time of

hospital admission. In the latter group, some patients already had AKI at the time of hospital admission. Therefore, in the group for which we had to rely on hospital admission creatinine, we excluded patients who were initiated on RRT within 2 days after hospital admission, as well as patients who had a higher serum creatinine concentration at the time of admission than at hospital discharge. We did not apply back-calculation of baseline serum creatinine with the Modification of Diet in Renal Disease eGFR formula as suggested by the KDIGO AKI guidelines, because this would have led to underestimation of the number of patients with preexisting CKD stage 3 or higher [18].

Timing of initiation of RRT was defined using the KDIGO staging criteria. Initiation of RRT at KDIGO stage 1 or 2 was defined as “early,” and initiation of RRT at KDIGO stage 3 was defined as “late.” Oliguria was defined as diuresis of less than 500 ml over 24 h preceding the initiation of RRT. Fluid balance comprising the 24-h episode before initiation of RRT was calculated by the PDMS. Recovery of kidney function was assessed only in patients with reference creatinine. Recovery of kidney function was classified as complete when eGFR was within 25 % of the reference eGFR (based on reference serum creatinine). Incomplete kidney recovery was defined as patients who had a 25 % or greater decline of reference eGFR and who were not treated with dialysis. Absent kidney recovery was defined as the permanent need for RRT for more than 3 months. Since long-term serum creatinine data were seldom available at the exact follow-up times (e.g., 90 days), we allowed the following intervals: day 90 ± 7 days, 1 year ± 60 days, 2 year ± 60 days, and 3 years ± 60 days.

CKD was defined according to eGFR categories per the KDIGO criteria [19]: Stage 1 CKD is an eGFR >90 ml/minute/ 1.73 m²; stage 2 is 60–90 ml/minute/ 1.73 m²; stage 3 is 30–60 ml/minute/ 1.73 m²; stage 4 is 15–30 ml/minute/ 1.73 m²; and stage 5 is <15 ml/minute/ 1.73 m² or chronic RRT (hemodialysis or peritoneal dialysis). Patients with CKD stage 3 or worse were classified for the purposes of this study as patients with CKD and compared with patients who had CKD stage 2 or less (no CKD) [15]. Late initiation of RRT was defined as initiation of RRT at KDIGO stage 3. The MAKE composite endpoint was assessed in the patient cohort with reference creatinine, and it was defined as the presence of one or more of the following: death, incomplete kidney recovery, and/or development of ESRD treated with RRT [15].

Study outcomes

The primary outcome measure of the study was mortality 1 year after initiation of RRT. The secondary outcomes were long-term patient survival and long-term

kidney function measured as kidney recovery and dialysis dependence in hospital survivors. In addition, we reported and evaluated the composite outcome measure MAKE. We eventually assessed the classical determinants of long-term outcome of AKI treated with RRT: preexisting CKD, timing of initiation of RRT, and RRT modality.

Data collection

Data were prospectively recorded during the hospital stay. Baseline demographic parameters were retrieved from the hospital's electronic database and the ICU's electronic PDMS. Data on comorbidity and diagnostic categories were retrieved from the hospital administration's International Classification of Diseases, Ninth Revision, electronic coding system. The severity of illness as determined by the Simplified Acute Physiology Score II (SAPS II) score (based on data recorded during the first 24-h of ICU admission) was recorded at the time of ICU admission [20, 21]. At the time of initiation of RRT, severity of illness was assessed on the basis of parameters of organ dysfunction and Sepsis-related Organ Failure Assessment (SOFA) score [22]. Kidney laboratory data were recorded at hospital admission; ICU admission; initiation of RRT; hospital discharge; and 30 and 90 days and 1, 2, and 3 years. Data on long-term follow-up were gathered from the patients' electronic medical records (e.g., during follow-up consultation or, in cases of absence of such a consultation, by contacting the primary care physician of the patient by e-mail or telephone).

Statistical analysis

The data are expressed as number (proportion), median (interquartile range), or OR (95 % CI). Univariate analyses of long-term mortality and MAKE were performed with the Mann-Whitney *U* test, Fisher's exact test, Friedman's two-way analysis of variance by ranks test, Wilcoxon rank-sum test, Kruskal-Wallis test, and chi-square test, as appropriate. The predictors thus obtained were subsequently tested in a multivariable logistic regression model. Variables selected for inclusion in the regression model were those with a plausible rationale, with a *P* value ≤ 0.25 in bivariate analysis. Significant covariates for MAKE were identified after constructing a model in which all covariates were entered simultaneously (enter method). We analyzed for collinearity by assessing correlations between covariates; in addition, interaction was explored. Goodness of fit was assessed according to the method described by Hosmer and Lemeshow. Statistical significance was accepted when the *P* value was <0.05 .

The event-free survival rate was estimated using the Kaplan-Meier method, and significance was evaluated with the log-rank test. A Cox proportional hazards

model was developed to address the predictors of long-term survival. These analyses were performed with use of IBM SPSS Statistics for Windows, version 23.0.0 (IBM, Armonk, NY, USA).

Results

During the 8-year study period, 23,665 first ICU admissions were registered. A total of 1292 patients (5.5 %) had AKI-RRT, and 959 patients were included in the final analyses (Fig. 1). Of these, 609 patients (63.4 %) had a reference creatinine level documented. Demographic data of the study cohort are shown in Table 1.

Patient outcome and long-term survival

ICU mortality was 54.6 %. Mortality increased from 59.7 % at the time of hospital discharge to 64.5 % at 1 year, 67.9 % at 2 years, and 72.1 % at 3 years (Fig. 2a). Among hospital survivors, 11.9 % later died at 1 year, 19.3 % at 2 years, and 27.2 % at 3 years (Fig. 2b).

One-year nonsurvivors were significantly older than survivors but had less CKD. A greater proportion of nonsurvivors were female and had been admitted to the medical ICU. At ICU admission, nonsurvivors' severity of illness based on their SAPS II scores were than those of survivors. At initiation of RRT, nonsurvivors had higher SOFA scores than survivors. Their hemodynamic status was more unstable, as a greater proportion were treated with vasoactive agents, had a positive fluid balance, were more acidotic, and had higher serum lactate and more

negative base excess. Nonsurvivors were less often treated with diuretics, and a greater proportion were mechanically ventilated and treated with CRRT as the initial RRT modality (Table 1). Patients treated with CRRT as the initial RRT modality had worse survival than patients treated with IHD ($P < 0.001$ by log-rank test) (Fig. 2c).

We found that, after adjustment for confounders in a Cox proportional hazards model, CRRT as the initial RRT modality was associated with long-term mortality (HR 1.570, 95 % CI 1.202–2.050, $P = 0.001$). Baseline kidney function and timing of RRT were not associated with survival in this model. Other confounders associated with survival were older age and increased severity of illness (full model provided in Additional file 1: Table S1).

Kidney outcomes

Nephrology consultation after hospital discharge was reported in only 34.0 % of hospital survivors. Nephrology follow-up was more frequent in patients with CKD stage ≥ 3 compared with patients with CKD stage < 3 (51.0 % versus 31.8 %, $P = 0.003$). Among hospital survivors, dialysis dependence rates were 8.6 % at hospital discharge, 9.0 % at 90 days, 14.1 % at 1 year, 14.0 % at 2 years, and 16.9 % at 3 years.

In order to assess kidney outcomes with a focus on (in)complete renal recovery, the cohort of hospital survivors who had a reference creatinine value was studied (Table 2). In these patients, we found that after 1 year of follow-up, 48.4 % had complete recovery of kidney function, 32.6 % had incomplete recovery, and 19.0 % had ESRD and were being treated with chronic dialysis. Patients who had incomplete recovery had better kidney function and less often had diabetes before AKI. Patients receiving chronic dialysis treatment more often had diabetes, CKD, and oliguria at the time of initiation of RRT. The evolution of kidney outcomes over time are summarized in Fig. 3. Complete renal recovery peaked at 90 days (56.7 %) and further decreased over time. Dialysis dependence increased over time from 13.8 % at hospital discharge to 28.1 % at 3 years. Patients who had prior CKD had more ESRD treated with dialysis than patients without CKD, but they had less incomplete renal recovery (without need for RRT) (Table 3).

MAKE

Over time, MAKE increased in the total cohort; it was present in 83.1 % of the patients at hospital discharge, 86.0 % at 90 days, 87.5 % at one year and 92.4 % and 93.7 % at two and three years respectively. MAKE was mainly determined by mortality (Fig. 4). MAKE was more frequent in patients with prior CKD stage < 3 compared with patients with preexisting CKD stage ≥ 3 (Table 3).

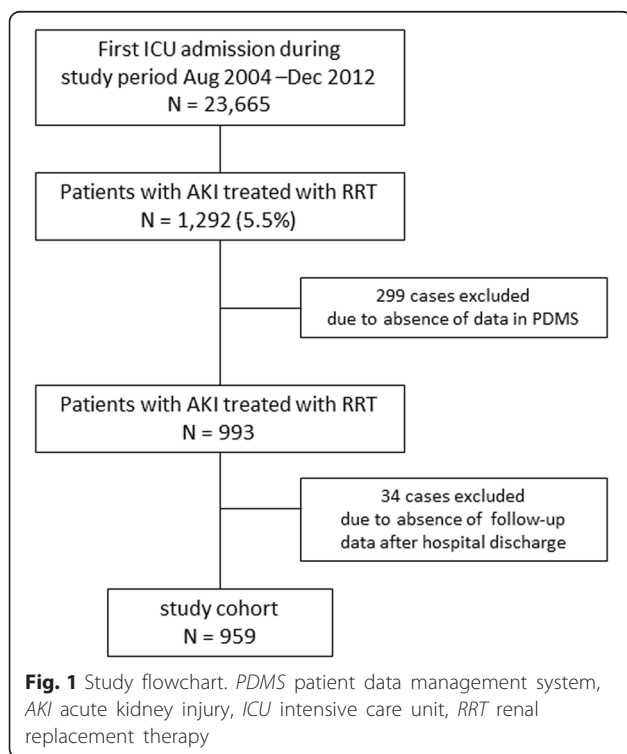


Table 1 Patient demographics and comparisons

	Total cohort	1-year survivors	1-year nonsurvivors	P value	MAKE		P value
					1-year absent	1-year present	
Number of patients	959	340	619		102	752	
Demographics							
Age, years	65 (55–75)	64 (52–74)	65 (55–75)	0.030	66 (57–74)	65 (55–75)	0.802
Male sex, %	65.4	70.0	62.8	0.026	64.6	64.0	0.892
Black race, %	0.2	0	0.3	0.294	0	0.3	0.593
Comorbid conditions							
Diabetes mellitus, %	27.5	27.4	27.6	0.928	29.4	28.6	0.864
Baseline CKD KDIGO stage ≥ 3 , %	39.6	44.2	37.0	0.084	51.6	37.3	0.010
Baseline eGFR, ml/minute/1.73 m ²	69.0 (47.0–91.1)	63.4 (44.4–82.9)	74.1 (49.2–93.8)	0.004	57.3 (42.8–76.5)	72.9 (49.2–93.4)	0.001
Baseline serum creatinine, mg/dl	1.07 (0.82–1.41)	1.15 (0.92–1.48)	1.00 (0.79–1.31)	<0.001	1.21 (0.96–1.58)	1.03 (0.80–1.34)	<0.001
Characteristics at ICU admission							
Type of ICU							
Medical, %	45.8	36.4	51.1	<0.001	32.0	49.6	0.001
Surgical, %	54.2	63.6	48.9		68.0	50.4	
Timing of surgery							
Urgent, %	61.0	60.2	61.8	0.729	60.2	61.8	0.729
Elective, %	39.0	39.8	38.2		39.8	38.2	
Severity of illness							
SAPS II	63 (45–78)	52 (39–69)	70 (54–83)	<0.001	49 (34–69)	68 (49–82)	<0.001
Characteristics at initiation of RRT							
Severity of illness							
SOFA score, total	10 (6–14)	9 (5–12)	12 (8–15)	<0.001	5 (1–9)	11 (7–14)	<0.001
SOFA score, nonrenal	7 (3–11)	6 (2–9)	8 (5–12)	<0.001	8 (5–12)	8 (4–11)	<0.001
Mechanical ventilation, %	88.6	82.4	92.0	<0.001	80.8	90.1	0.006
Vasoactive medication, %	66.2	52.0	74.0	<0.001	48.0	70.4	<0.001
Renal characteristics							
Oliguria, %	48.9	45.8	50.8	0.171	36.6	50.9	0.010
Fluid balance, ml	2163 (1180–3578)	2021 (1019–3220)	2200 (1268–4000)	0.049	1919 (1003–2996)	2229 (1311–4000)	0.054
Urine output, ml	561 (178–1080)	621 (246–1230)	529 (157–1020)	0.055	792 (297–1483)	529 (152–1055)	0.007
Diuretics, %	49.3	56.7	45.2	0.001	61.3	45.9	<0.001
ICU to RRT length of stay, days	2 (1–7)	2 (1–5)	2 (1–8)	0.050	2 (1–6)	3 (1–8)	0.144
Serum creatinine, mg/dl	3.57 (2.62–4.69)	4.23 (3.26–5.58)	3.26 (2.38–4.25)	<0.001	4.18 (3.11–5.14)	3.38 (2.47–4.44)	<0.001

Table 1 Patient demographics and comparisons (*Continued*)

Laboratory parameters							
Serum hemoglobin, g/dl	9.3 (8.3–10.3)	9.5 (8.6–10.5)	9.2 (8.2–10.2)	0.001	9.4 (8.6–10.4)	9.2 (8.2–10.2)	0.001
Platelets, $\times 10^3/\text{mm}^3$	115 (67–184)	146 (89–219)	100 (55–158)	<0.001	144 (89–202)	104 (60–177)	<0.001
Serum sodium, mmol/L	139 (135–144)	138 (134–142)	140 (136–145)	<0.001	137 (133–142)	140 (136–144)	<0.001
Serum potassium, mmol/L	4.6 (4.1–5.3)	4.8 (4.2–5.4)	4.6 (4.1–5.2)	0.012	4.9 (4.2–5.4)	4.6 (4.1–5.2)	0.007
Serum chloride, mmol/L	102 (98–107)	101 (97–106)	103 (98–108)	0.051	101 (97–106)	103 (98–108)	0.005
Serum bilirubin, mg/dl	1.6 (0.7–4.2)	1.3 (0.6–3.3)	1.7 (0.7–4.8)	0.004	1.35 (0.60–2.90)	1.27 (0.86–1.82)	0.001
Serum urea, g/dl	1.28 (0.90–1.83)	1.33 (0.99–1.83)	1.26 (0.85–1.87)	0.062	1.36 (1.00–1.85)	1.27 (0.86–1.82)	0.173
Serum albumin, g/dl	2.2 (1.8–2.6)	2.3 (2.0–2.8)	2.1 (1.8–2.5)	<0.001	2.3 (2.0–2.6)	2.2 (1.8–2.6)	0.003
Lactate, mg/dl	24 (12–82)	15 (10–36)	34 (15–100)	<0.001	14 (9–29)	29 (14–94)	<0.001
pH	7.30 (7.24–7.37)	7.34 (7.27–7.39)	7.29 (7.21–7.36)	<0.001	7.33 (7.27–7.38)	7.29 (7.22–7.36)	<0.001
Base excess	−5.2 (−8.3, −2.2)	−4.2 (−6.4, −1.6)	−6.0 (−9.4, −2.5)	<0.001	−4.5 (−7.1, −1.8)	−5.5 (−9.1, −2.5)	0.001
RRT modality							
IHD, %	54.0	67.6	46.4	<0.001	72.5	49.5	<0.001
SLEDD, %	15.8	16.2	15.6		14.7	15.5	
CRRT, %	30.2	16.2	38.0		12.7	35.0	
Timing of initiation of RRT							
Late (KDIGO stage ≥ 3), %	54.1	58.9	51.6	0.087	61.1	58.8	0.735

Abbreviations: CKD chronic kidney disease, CRRT continuous renal replacement therapy, eGFR estimated glomerular filtration rate, ICU intensive care unit, IHD intermittent hemodialysis, KDIGO Kidney Disease: Improving Global Outcomes, MAKE major adverse kidney events, RRT renal replacement therapy, SAPS II Simplified Acute Physiology Score II, SLEDD slow extended daily dialysis, SOFA Sepsis-related Organ Failure Assessment. Data are presented as median (interquartile range) unless otherwise indicated. Statistically significant data ($P < 0.05$) are presented in bolditalic.

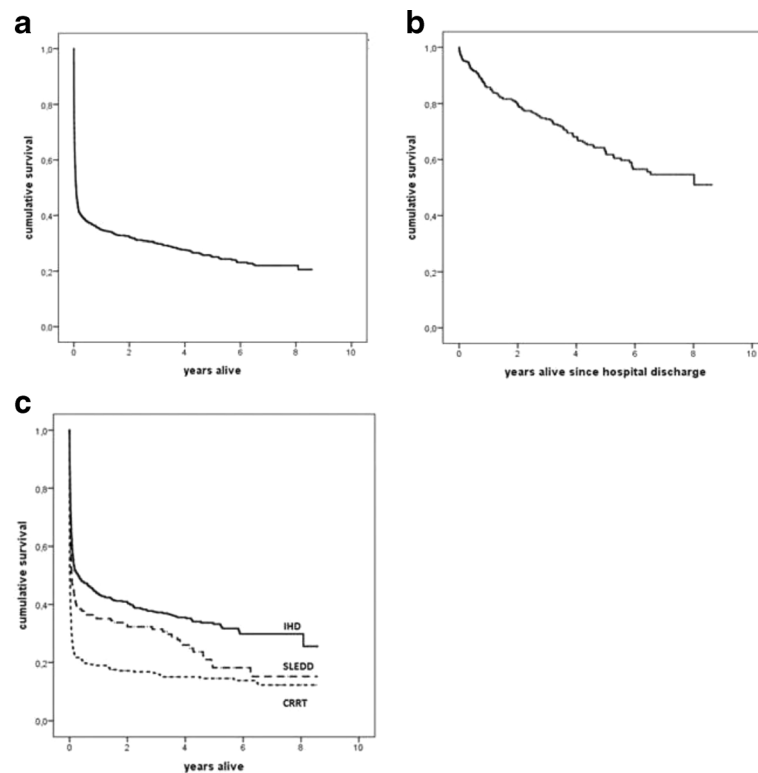


Fig. 2 **a** Kaplan-Meier survival curve over time for the whole cohort. **b** Kaplan-Meier survival curve over time for hospital survivors. **c** Kaplan-Meier survival curve stratified for continuous renal replacement therapy (CRRT) modality ($P < 0.001$ by log-rank test), intermittent hemodialysis (IHD), and slow extended daily dialysis (SLEDD)

Variables associated with MAKE at 1 year

In univariate analysis, variables associated with MAKE at 1 year were the absence of preexisting CKD, severity of illness on ICU admission and at initiation of RRT (based on SAPS II and SOFA scores, mechanical ventilation, hemodynamic instability with need for vasoactive medication anemia, low platelet count, acidosis, and hyperlactatemia), oliguria, serum creatinine level, and CRRT modality at initiation of RRT (Table 1). On the basis of this univariate analysis, we analyzed associations in a multivariate logistic regression model. After adjustment for confounding covariates, we found that preexisting kidney disease, initial RRT modality, and timing of initiation of RRT were not associated with MAKE at 1 year (full model provided in Additional file 1: Table S2).

Discussion

We conducted an 8-year analysis of more than 23,000 first ICU admissions and found that AKI-RRT occurred in 5.5 % of patients admitted to the ICU. Mortality rates were high, with almost 60 % of the patients dying during their hospital stay and approximately an additional 10 % per year of the hospital survivors in the years following discharge. Apart from advancing age and increased severity of illness, CRRT as the initial RRT modality was

associated with long-term mortality. As for kidney outcomes, almost one-fifth of the AKI-RRT hospital survivors had ESRD at 1 year. Kidney recovery in hospital survivors after AKI-RRT was determined by preexisting renal comorbidity and diabetes mellitus. Finally, after adjustment for covariates, the occurrence of MAKE was not associated with preexisting CKD, timing of initiation of RRT, or RRT modality.

The occurrence rate and mortality of our cohort are concordant with data reported by units in other developed countries [2, 23, 24]. Similarly to other studies, and not surprisingly, long-term mortality was associated with not only advanced age but also variables depicting severity of illness and accompanying hemodynamic instability: use of mechanical ventilation, vasoactive agents, and a positive fluid balance. The association of CRRT as the initial modality of RRT with long-term mortality fits in this concept. In our unit, all modalities are used, and CRRT is used as the initial modality in patients who are in severe shock or for whom slow fluid removal is warranted. When a patient's condition improves, the modality is switched to SLEDD or IHD. In other words, the choice of the initial modality may serve as a surrogate for severity of illness. Our findings are similar to those of a recent study where RRT modality was also chosen

Table 2 Renal recovery (complete and incomplete) versus dialysis dependence at 1 year in patients with reference serum creatinine values

	Complete renal recovery	Incomplete renal recovery	Dialysis dependence	P value
Number of patients (%)	89 (48.4)	60 (32.6)	35 (19.0)	
Demographics				
Age, years (IQR)	67 (57–75)	64 (53–75)	66 (55.75)	0.682
Male sex, %	64.0	80.0	57.1	0.039
Black race, %	0	0	0	NA
Comorbidities				
Diabetes mellitus, %	32.6	21.7	57.1	0.002
eGFR, ml/minute/1.73 m ²	60.6 (43.0–77.2)	73.6 (56.0–95.4)	44.6 (27.1–67.4)	<0.001
Baseline CKD stage ≥3, %	49.4	28.3	69.6	0.013
Baseline serum creatinine, mg/dl	1.17 (0.94–1.56)	1.05 (0.83–1.29)	1.41 (1.11–2.42)	0.001
Characteristics at ICU admission				
Type of ICU				
Medical, %	32.2	35.0	48.5	0.246
Surgical, %	67.8	65.0	51.5	
Timing of surgery				
Urgent, %	55.4	64.1	70.6	0.459
Elective, %	44.6	35.9	29.4	
Severity of illness				
APACHE II score	25 (19–35)	24 (21–27)	27 (19.31)	0.948
SAPS II	50 (35–69)	55 (43–69)	53 (44–71)	0.871
Characteristics at initiation of RRT				
Severity of illness				
SOFA score	8 (5–12)	9 (5–12)	5 (5–11)	0.736
SOFA score, nonrenal	5 (2–9)	7 (2–9)	2 (1–7)	0.727
Mechanical ventilation, %	78.2	85.0	64.5	0.082
Vasoactive medication, %	43.7	55.0	35.5	0.172
Renal characteristics				
Oliguria, %	39.5	41.5	69.0	0.019
Fluid balance, ml	1774 (997–3016)	2546 (1364–3551)	2713 (2103–4534)	0.059
Urine output, ml	768 (253–1496)	665 (351–1225)	219 (98–1080)	0.052
Diuretics, %	63.2	58.6	40.0	0.084
ICU length of stay to initiation of RRT, days	3 (1–4)	3 (2–9)	2 (0–4)	0.606
Laboratory parameters				
Serum hemoglobin, g/dl	9.8 (8.9–10.8)	9.3 (8.3–10.5)	9.6 (8.3–10.6)	0.241
Serum platelets, ×10 ³ /mm ³	143 (80–195)	164 (87–272)	198 (90–265)	0.214
Serum sodium, mmol/L	136 (132–140)	140 (136–142)	139 (133–142)	0.011
Serum potassium, mmol/L	5.0 (4.4–5.5)	4.9 (4.2–5.3)	4.7 (4.2–5.1)	0.264
Serum chloride, mmol/L	100 (96–105)	102 (97–108)	101 (97–108)	0.081
Serum urea, g/dl	1.32 (1.09–1.715)	1.27 (0.92–1.78)	1.34 (1.03–1.97)	0.664
Serum creatinine, mg/dl	4.23 (3.27–5.05)	3.95 (3.07–5.08)	4.73 (3.37–6.54)	0.194
Serum albumin, g/dl	2.3 (2.0–2.8)	2.3 (1.9–2.6)	2.8 (2.2–3.3)	0.074
Lactate, mg/dl	17 (11–33)	16 (11–83)	11 (7–94)	0.259
pH	7.34 (7.29–7.39)	7.33 (7.25–7.39)	7.33 (7.24–7.38)	0.481

Table 2 Renal recovery (complete and incomplete) versus dialysis dependence at 1 year in patients with reference serum creatinine values (*Continued*)

Base excess	-4.0 (-6.6, -1.6)	-4.6 (-6.5, -2.9)	-4.5 (-7.3, -3.3)	0.628
RRT modality				
IHD, %	73.0	68.3	74.3	0.799
SLEDD, %	14.6	16.7	8.6	
CRRT, %	12.4	15.0	17.1	
Timing of initiation of RRT ^a				
Early, %	46.1	35.0	50.0	0.309
Late, %	53.9	65.0	50.0	

Abbreviations: APACHE II Acute Physiology and Chronic Evaluation II, CKD chronic kidney disease, CRRT continuous renal replacement therapy, eGFR estimated glomerular filtration rate, ICU intensive care unit, IHD intermittent hemodialysis, IQR interquartile range, KDIGO Kidney Disease: Improving Global Outcomes, RRT renal replacement therapy, SAPS II Simplified Acute Physiology Score II, SLEDD slow extended daily dialysis, SOFA Sepsis-related Organ Failure Assessment

^a Early (KDIGO stage <3 at initiation RRT), late (KDIGO stage ≥3 at initiation of RRT)
Statistically significant data ($P < 0.05$) are presented in bolditalic

on the basis of the hemodynamic status of the patient [25], but they are in contrast to those in other cohort studies [8, 10, 26, 27]. The recently published studies on timing of RRT by Wald et al, as well as the ELAIN and Artificial Kidney Initiation in Kidney Injury (AKIKI) studies, also illustrate the complexity of the impact of timing on outcomes. While two of these studies could demonstrate no effect of timing, the ELAIN study showed a marked survival benefit for early initiation.

Differences between these studies were the definition of early and late initiation, as well as the patients' characteristics (surgical versus general ICU), modalities used (CRRT in ELAIN versus all modalities in the other studies), and single-center observation (ELAIN) versus multicenter studies (Wald and AKIKI) [28–30].

We found that, among 1-year survivors with known reference serum creatinine values, only 50 % had complete recovery of kidney function. With a dialysis dependence rate of 9.0 % in survivors at day 90, our findings were lower than those reported in the Finnish Acute Kidney Injury (FINNAKI) study (18.9 % at 90 days) and higher than in the Randomized Evaluation of Normal versus Augmented Level Replacement Therapy (RENAL) study (5.6 % at 90 days) and the IVOIRE study (1.4 %) [2, 23, 31]. The FINNAKI, RENAL, and IVOIRE trials used CRRT only, while we started CRRT in only one-fifth of patients.

Interestingly, as dialysis dependence was associated predominantly with comorbidities such as diabetes and CKD, patients with acute-on-chronic kidney disease face a significant risk of developing ESRD. This is similar to findings in other cohort studies and meta-analyses [7, 25, 32, 33].

As many as one-third of patients in our cohort had incomplete renal recovery. Follow-up of patients in the RENAL study also revealed that a large proportion of AKI-RRT survivors had albuminuria and decreased eGFR [34]. Close follow-up and interventions aimed at preserving kidney function may positively impact long-term outcomes. Similar to data reported in the United States [35], only 34.0 % of AKI-RRT survivors in our cohort had follow-up of kidney function by a nephrologist. In our hospital, follow-up by a nephrologist is not protocol-driven but depends on the clinical and renal status of the patient. So, how this possibly impacted kidney outcome and survival is not clear. Especially in patients with acute-on-chronic kidney disease, more

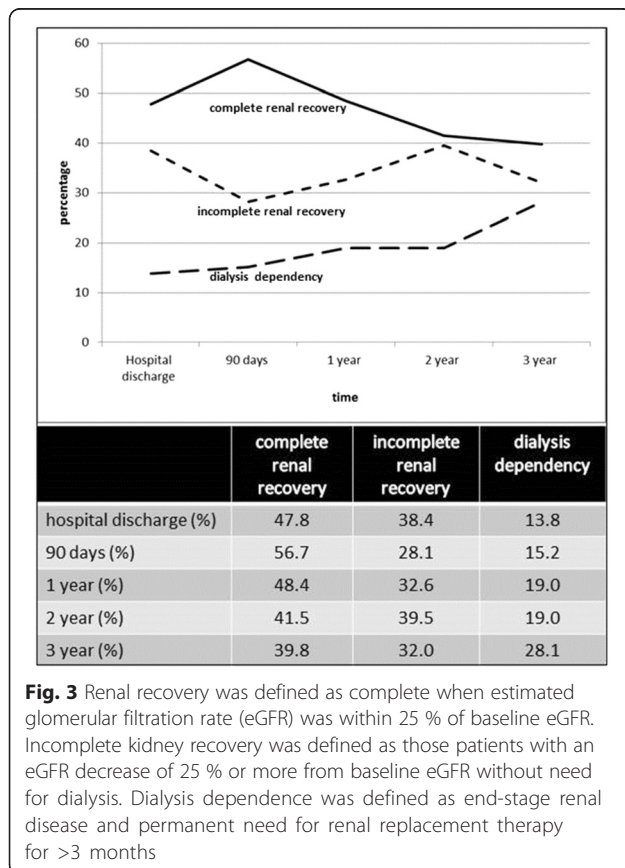


Table 3 Renal recovery and development of end-stage renal disease in patients with acute-on-chronic kidney disease versus patients without preexisting chronic kidney disease (subgroup analysis in patients with known reference baseline serum creatinine concentration)

Kidney outcome	Total	Preexisting CKD KDIGO stage <3	Preexisting CKD KDIGO stage ≥3	P value
Hospital discharge				
Complete renal recovery, %	47.8	47.2	51.3	0.055
Incomplete renal recovery, %	38.4	45.7	32.3	
Dialysis dependence, %	13.8	7.1	14.6	
90 days				
Complete renal recovery, %	56.7	55.8	65.2	0.010
Incomplete renal recovery, %	28.1	34.6	15.2	
Dialysis dependence, %	15.2	9.6	19.7	
1 year				
Complete renal recovery, %	48.4	47.4	57.1	0.001
Incomplete renal recovery, %	32.6	45.3	22.1	
Dialysis dependence, %	19.0	7.4	20.8	
2 years				
Complete renal recovery, %	41.5	34.7	57.1	<0.001
Incomplete renal recovery, %	39.5	61.1	22.2	
Dialysis dependence, %	19.0	4.2	20.6	
3 years				
Complete renal recovery, %	39.8	39.1	51.0	<0.001
Incomplete renal recovery, %	32.0	51.6	15.7	
Dialysis dependence, %	28.1	9.4	33.3	
MAKE				
Hospital discharge, %	83.1	87.3	51.0	<0.001
90 days, %	86.0	81.9	78.2	0.280
1 year, %	87.5	87.4	79.4	0.010
2 years, %	92.4	92.4	84.2	0.002
3 years, %	93.7	92.4	88.5	0.124

Abbreviations: CKD chronic kidney disease, KDIGO Kidney Disease: Improving Global Outcomes, MAKE major adverse kidney events

Renal recovery was defined as complete when estimated glomerular filtration rate (eGFR) was within 25 % of baseline eGFR. Incomplete kidney recovery was defined as patients with an eGFR decrease of 25 % or more from baseline eGFR without need for dialysis. Dialysis dependence was defined as end-stage kidney disease and permanent need for renal replacement therapy for >3 months

Statistically significant data ($P < 0.05$) are presented in bolditalic

standardized kidney follow-up by a general practitioner or nephrologist may be appropriate.

After adjustment for covariates, MAKE was not associated with the classic determinants of outcome, such as preexisting CKD, timing of RRT, or modality of RRT. Our results demonstrate the benefits and limitations of the use of MAKE as a composite endpoint in AKI studies. MAKE is a clearly defined and clinically important endpoint. Compared with single-outcome endpoints, it captures a greater proportion of patients with poor long-term outcomes, turning MAKE into a relevant endpoint. However, detailed evaluation of this outcome parameter necessitates the presentation of the individual components [15, 36–39]. In this study, MAKE was determined mainly by variables associated with its biggest individual component, mortality. Not surprisingly, variables associated with

mortality in univariate analysis were also associated with MAKE: increased severity of illness scores and mechanical ventilation but also the presence of hemodynamic instability at initiation of RRT, depicted by the use of vasoactive medication, hyperlactatemia, acidosis, and a positive fluid balance.

This study has several strengths. First, it describes an up to 8-year follow-up period in a large cohort of patients with a heavy burden of disease. Second, apart from the classical mortality rates, we also report detailed information concerning possible determinants of outcome in ICU patients with AKI treated with RRT, such as preexisting CKD, timing of initiation of RRT, and initial modality of RRT. Further, (in)complete renal recovery and dialysis dependence are extensively described. By emphasizing the risk of development of ESRD not only

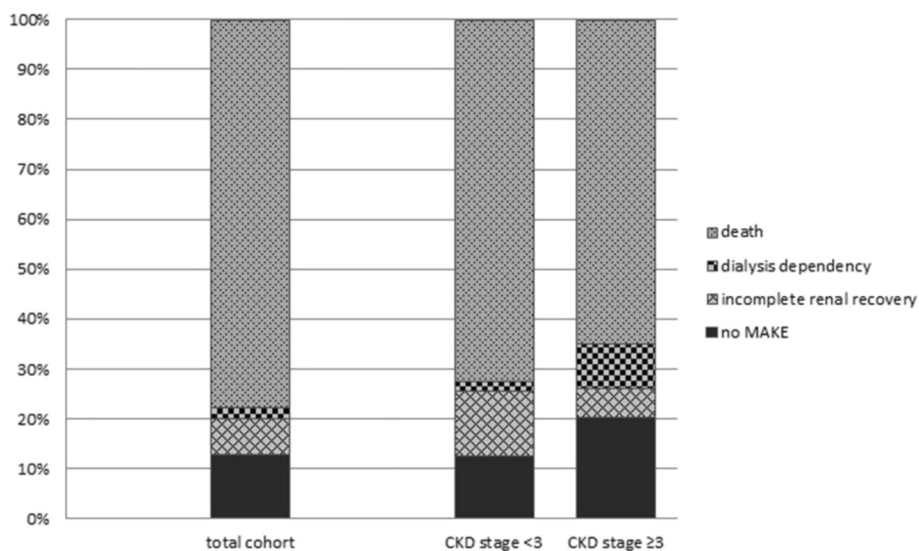


Fig. 4 The composite endpoint major adverse kidney events (MAKE) comprised the components death, dialysis dependency, and incomplete renal recovery. Renal recovery was defined as incomplete when estimated glomerular filtration rate (eGFR) decreased 25 % or more from baseline eGFR without need for dialysis. Dialysis dependence was defined as end-stage renal disease and permanent need for renal replacement therapy for >3 months. CKD chronic kidney disease

in patients with a single AKI-RRT episode but also in patients with acute-on-chronic kidney disease, this study provides a key role for nephrological follow-up in such a cohort of patients. Finally, this study is one of the first to report on the recently proposed composite endpoint MAKE. The composite endpoint MAKE was addressed in detail, not only revealing its benefits but also highlighting its limitations in this setting. As the study is monocentric, the conclusions cannot automatically be extended to other ICUs. Therefore, generalization of these findings must be considered with caution.

This cohort study has limitations. First, owing to its observational design, we cannot exclude that there were unmeasured confounders. Second, the data reflect the practice at a single tertiary care center and may therefore lack external validity. However, the reported AKI-RRT prevalence of 5.5 % and the hospital mortality rate in this study cohort are in line with data reported by units in other developed countries [2, 27]. Third, we could include only all consecutive patients with AKI-RRT present in the electronic PDMS, owing to its gradual introduction. Similarly, patients who, because of therapeutic restrictions, were not started on RRT were not included in this analysis. Fourth, we had only a reference creatinine value in 63.4 % of patients. Therefore, renal recovery and MAKE were assessed in only a subgroup of patients. Because patients with absent documentation of a baseline serum creatinine level more likely have normal kidney function, this analysis was done in a patient cohort with presumably a higher-than-normal proportion of patients with preexisting CKD.

This may have impacted our findings. To correct for possible bias, we performed a sensitivity analysis excluding baseline kidney function from the Cox regression and multivariate analyses. This intervention did not change the HRs and ORs of the covariates included in the model. Therefore, we may conclude that the possibility of bias introduced by this subgroup analysis may be limited.

Conclusions

We demonstrated poor long-term survival after AKI-RRT associated with advancing age and clinical status at initiation of RRT. Initiation with CRRT, a surrogate for severity of illness, was associated with adverse outcome. Renal recovery was limited and associated with CKD and diabetes. Patients with acute-on-chronic kidney disease frequently developed ESRD, making nephrological follow-up imperative. The majority of patients were classified as MAKE at 1 year. MAKE was determined mainly by its biggest component, mortality. CKD as well as timing and modality of RRT were not associated with MAKE.

Additional file

Additional file 1: Table S1. Cox proportional hazards model. **Table S2.** Multivariate regression analysis: MAKE at 1 year. (DOCX 15 kb)

Abbreviations

AKI, acute kidney injury; AKIKI, Artificial Kidney Initiation in Kidney Injury study; AKI-RRT, acute kidney injury treated with renal replacement therapy; APACHE II, Acute Physiology and Chronic Evaluation II; CKD, chronic kidney disease; CRRT, continuous renal replacement therapy; eGFR, estimated glomerular filtration rate; ESRD, end-stage renal disease; FINNAKI, Finnish

Acute Kidney Injury study; GFR, glomerular filtration rate; ICU, intensive care unit; IHD, intermittent hemodialysis; IQR, interquartile range; KDIGO, Kidney Disease: Improving Global Outcomes; MAKE, major adverse kidney events; MDRD, Modification of Diet in Renal Disease; PDMS, patient data management system; RENAL, Randomized Evaluation of Normal versus Augmented Level Replacement Therapy study; RRT, renal replacement therapy; SAPS, Simplified Acute Physiology Score; SLEDD, slow extended daily dialysis; SOFA, Sepsis-related Organ Failure Assessment

Acknowledgements

We thank Chris Danneels and Veerle Brams for data retrieval from the PDMS and their help in setting up the database.

Authors' contributions

WDC helped to design the study, participated in data collection and analysis, and wrote the first draft of the manuscript and revised it. JV, VS, and SC participated in data collection and reviewed the first draft of the manuscript. AD, RV, JDW, and JD helped to design the study and revised the manuscript. EAJH had the original idea for the study, helped to design it, participated in analysis, and revised the manuscript. All authors read and approved the final manuscript.

Authors' information

All authors attest to the originality of the text and the originality of any and all supporting tables and images. All authors made material contributions to this manuscript according to the rules of authorship of the *Critical Care* journal.

Competing interests

The authors declare that they have no competing interests.

Ethics approval and consent to participate

The study was approved by the ethics committee of Ghent University Hospital and was conducted in accordance with the Declaration of Helsinki. The need for informed consent was waived for this study.

Author details

¹Department of Intensive Care Medicine, Ghent University Hospital, De Pintelaan 185, 9000 Gent, Belgium. ²Department of Anesthesia and Intensive Care Medicine, AZ Groeninge Hospital, Kortrijk, Belgium. ³Nephrology Division, Ghent University Hospital, Ghent, Belgium. ⁴Research Foundation-Flanders (FWO), Brussels, Belgium. ⁵Department of Anesthesia, Stedelijk Ziekenhuis, Aalst, Belgium. ⁶Department of Anesthesia, Sint-Jozef Ziekenhuis Izegem, Izegem, Belgium.

Received: 2 May 2016 Accepted: 15 July 2016

Published online: 12 August 2016

References

- Hoste EA, Bagshaw SM, Bellomo R, Cely CM, Colman R, Cruz DN, et al. Epidemiology of acute kidney injury in critically ill patients: the multinational AKI-EPI study. *Intensive Care Med.* 2015;41(8):1411–23.
- Nisula S, Kaukonen KM, Vaara ST, Korhonen AM, Poukkanen M, Karlsson S, et al. Incidence, risk factors and 90-day mortality of patients with acute kidney injury in Finnish intensive care units: the FINNAKI study. *Intensive Care Med.* 2013;39(3):420–8.
- Kellum JA, Angus DC. Patients are dying of acute renal failure. *Crit Care Med.* 2002;30(9):2156–7.
- Hoste EA, Schurgers M. Epidemiology of acute kidney injury: how big is the problem? *Crit Care Med.* 2008;36(4 Suppl):S146–151.
- Elseviers MM, Lins RL, Van der Niepen P, Hoste E, Malbrain ML, Damas P, et al. Renal replacement therapy is an independent risk factor for mortality in critically ill patients with acute kidney injury. *Crit Care.* 2010;14(6):R221.
- Chawla LS, Eggers PW, Star RA, Kimmel PL. Acute kidney injury and chronic kidney disease as interconnected syndromes. *N Engl J Med.* 2014;371(1):58–66.
- Rimes-Stigare C, Frumento P, Bottai M, Martensson J, Martling CR, Bell M. Long-term mortality and risk factors for development of end-stage renal disease in critically ill patients with and without chronic kidney disease. *Crit Care.* 2015;19:383.
- Bell M, SWING, Granath F, Schön S, Ekborn A, Martling CR. Continuous renal replacement therapy is associated with less chronic renal failure than intermittent haemodialysis after acute renal failure. *Intensive Care Med.* 2007;33(5):773–80.
- Uchino S, Bellomo R, Kellum JA, Morimatsu H, Morgera S, Schetz MR, et al. Patient and kidney survival by dialysis modality in critically ill patients with acute kidney injury. *Int J Artif Organs.* 2007;30(4):281–92.
- Schneider AG, Bellomo R, Bagshaw SM, Glassford NJ, Lo S, Jun M, et al. Choice of renal replacement therapy modality and dialysis dependence after acute kidney injury: a systematic review and meta-analysis. *Intensive Care Med.* 2013;39(6):987–97.
- Vinsonneau C, Camus C, Combes A, Costa de Beauregard MA, Klouche K, Boulain T, et al. Continuous venovenous haemodiafiltration versus intermittent haemodialysis for acute renal failure in patients with multiple-organ dysfunction syndrome: a multicentre randomised trial. *Lancet.* 2006;368(9533):379–85.
- Wald R, Bagshaw SM. The timing of renal replacement therapy initiation in acute kidney injury. *Semin Nephrol.* 2016;36(1):78–84.
- Amdur RL, Chawla LS, Amodeo S, Kimmel PL, Palant CE. Outcomes following diagnosis of acute renal failure in U.S. veterans: focus on acute tubular necrosis. *Kidney Int.* 2009;76(10):1089–97.
- Ishani A, Xue JL, Himmelfarb J, Eggers PW, Kimmel PL, Molitoris BA, et al. Acute kidney injury increases risk of ESRD among elderly. *J Am Soc Nephrol.* 2009;20(1):223–8.
- Billings FT, Shaw AD. Clinical trial endpoints in acute kidney injury. *Nephron Clin Pract.* 2014;127(1-4):89–93.
- De Corte W, Vuylsteke S, De Waele JJ, Dhondt AW, Decruyenaere J, Vanholder R, et al. Severe lactic acidosis in critically ill patients with acute kidney injury treated with renal replacement therapy. *J Crit Care.* 2014;29(4):650–5.
- Reynvoet E, Vandijck DM, Blot SI, Dhondt AW, De Waele JJ, Claus S, et al. Epidemiology of infection in critically ill patients with acute renal failure. *Crit Care Med.* 2009;37(7):2203–9.
- Zavada J, Hoste E, Cartin-Ceba R, Calzavacca P, Gajic O, Clermont G, et al. A comparison of three methods to estimate baseline creatinine for RIFLE classification. *Nephrol Dial Transplant.* 2010;25(12):3911–8.
- Kidney Disease: Improving Global Outcomes (KDIGO) CKD Work Group. KDIGO 2012 clinical practice guideline for the evaluation and management of chronic kidney disease. *Kidney Int Suppl.* 2013;3(1):1–150.
- Knaus WA, Draper EA, Wagner DP, Zimmerman JE. APACHE II: a severity of disease classification system. *Crit Care Med.* 1985;13(10):818–29.
- Le Gall JR, Lemeshow S, Saulnier F. A new Simplified Acute Physiology Score (SAPS II) based on a European/North American multicenter study. *JAMA.* 1993;270(24):2957–63.
- Vincent JL, Moreno R, Takala J, Willatts S, de Mendonça A, Bruining H, et al. The SOFA (Sepsis-related Organ Failure Assessment) score to describe organ dysfunction/failure. *Intensive Care Med.* 1996;22(7):707–10.
- RENAL Replacement Therapy Study Investigators. Intensity of continuous renal-replacement therapy in critically ill patients. *N Engl J Med.* 2009; 361(17):1627–38.
- VAN/NIH Acute Renal Failure Trial Network. Intensity of renal support in critically ill patients with acute kidney injury. *N Engl J Med.* 2008;359(1):7–20. A published erratum appears in *N Engl J Med.* 2009;361(24):2391.
- Venot M, Weis L, Clech C, Darmon M, Allaouchiche B, Goldgran-Toledano D, et al. Acute kidney injury in severe sepsis and septic shock in patients with and without diabetes mellitus: a multicenter study. *PLoS One.* 2015;10(5):e0127411.
- Bagshaw SM, Berthiaume LR, Delaney A, Bellomo R. Continuous versus intermittent renal replacement therapy for critically ill patients with acute kidney injury: a meta-analysis. *Crit Care Med.* 2008;36(2):610–7.
- Uchino S, Kellum JA, Bellomo R, Doig GS, Morimatsu H, Morgera S, et al. Acute renal failure in critically ill patients: a multinational, multicenter study. *JAMA.* 2005;294(7):813–8.
- Wald R, Adhikari NK, Smith OM, Weir MA, Pope K, Cohen A, et al. Comparison of standard and accelerated initiation of renal replacement therapy in acute kidney injury. *Kidney Int.* 2015;88(4):897–904.
- Zarbock A, Kellum JA, Schmidt C, Van Aken H, Wempe C, Pavenstadt H, et al. Effect of early vs delayed initiation of renal replacement therapy on mortality in critically ill patients with acute kidney injury: the ELAIN randomized clinical trial. *JAMA.* 2016;315(20):2190–9.
- Gaudry S, Hajage D, Schortgen F, Martin-Lefevre L, Pons B, Boulet E, et al. Initiation strategies for renal-replacement therapy in the intensive care unit. *N Engl J Med.* 2016;375(2):122–33.
- Joannes-Boyau O, Honoré PM, Perez P, Bagshaw SM, Grand H, Canivet JL, et al. High-volume versus standard-volume haemofiltration for septic shock

- patients with acute kidney injury (IVOIRE study): a multicentre randomized controlled trial. *Intensive Care Med.* 2013;39(9):1535–46.
32. Hsu CY, Chertow GM, McCulloch CE, Fan D, Ordonez JD, Go AS. Nonrecovery of kidney function and death after acute on chronic renal failure. *Clin J Am Soc Nephrol.* 2009;4(5):891–8.
 33. Sawhney S, Mitchell M, Marks A, Fluck N, Black C. Long-term prognosis after acute kidney injury (AKI): what is the role of baseline kidney function and recovery? A systematic review. *BMJ Open.* 2015;5(1):e006497.
 34. Gallagher M, Cass A, Bellomo R, Finfer S, Gattas D, Lee J, et al. Long-term survival and dialysis dependency following acute kidney injury in intensive care: extended follow-up of a randomized controlled trial. *PLoS Med.* 2014; 11(2):e1001601.
 35. Chawla LS, Amdur RL, Amodeo S, Kimmel PL, Palant CE. The severity of acute kidney injury predicts progression to chronic kidney disease. *Kidney Int.* 2011;79(12):1361–9.
 36. Kellum JA. How can we define recovery after acute kidney injury? Considerations from epidemiology and clinical trial design. *Nephron Clin Pract.* 2014;127(1-4):81–8.
 37. Palevsky PM, Molitoris BA, Okusa MD, Levin A, Waikar SS, Wald R, et al. Design of clinical trials in acute kidney injury: report from an NIDDK workshop on trial methodology. *Clin J Am Soc Nephrol.* 2012;7(5):844–50.
 38. Kashani K, Al-Khafaji A, Ardiles T, Artigas A, Bagshaw SM, Bell M, et al. Discovery and validation of cell cycle arrest biomarkers in human acute kidney injury. *Crit Care.* 2013;17(1):R25.
 39. Cordoba G, Schwartz L, Woloshin S, Bae H, Gotzsche PC. Definition, reporting, and interpretation of composite outcomes in clinical trials: systematic review. *BMJ.* 2010;341:c3920.

Submit your next manuscript to BioMed Central and we will help you at every step:

- We accept pre-submission inquiries
- Our selector tool helps you to find the most relevant journal
- We provide round the clock customer support
- Convenient online submission
- Thorough peer review
- Inclusion in PubMed and all major indexing services
- Maximum visibility for your research

Submit your manuscript at
www.biomedcentral.com/submit

