

Topographically distinct adaptive landscapes for teeth, skeletons, and size explain the adaptive radiation of Carnivora (Mammalia)

Graham J. Slater^{1,2}

¹Department of the Geophysical Sciences, University of Chicago, Chicago, Illinois 60637

²E-mail: gslater@uchicago.edu

Received April 1, 2022

Accepted June 8, 2022

Models of adaptive radiation were originally developed to explain the early, rapid appearance of distinct modes of life within diversifying clades. Phylogenetic tests of this hypothesis have yielded limited support for temporally declining rates of phenotypic evolution across diverse clades, but the concept of an adaptive landscape that links form to fitness, while also crucial to these models, has received more limited attention. Using methods that assess the temporal accumulation of morphological variation and estimate the topography of the underlying adaptive landscape, I found evidence of an early partitioning of mandibulo-dental morphological variation in Carnivora (Mammalia) that occurs on an adaptive landscape with multiple peaks, consistent with classic ideas about adaptive radiation. Although strong support for this mode of adaptive radiation is present in traits related to diet, its signal is not present in body mass data or for traits related to locomotor behavior and substrate use. These findings suggest that adaptive radiations may occur along some axes of ecomorphological variation without leaving a signal in others and that their dynamics are more complex than simple univariate tests might suggest.

Modern theories of morphological evolution often make reference to the idea of an adaptive landscape. The topography of the adaptive landscape relates gene frequencies (Wright, 1932) or, less strictly, morphological variation (e.g., Martin & Wainwright, 2013) to fitness, and provides a mechanism for understanding evolutionary change within populations at the generational scale (Arnold et al., 2001; Lande, 1976; Uyeda et al., 2011). G. G. Simpson was the first to make the crucial connection between models of the adaptive landscape taken from population genetics and macroevolutionary patterns observable in the fossil record, leading him to propose that rapid phenotypic evolution in small, peripherally isolated populations (Mayr, 1942) provided a mechanism for the geologically sudden appearance of distinct adaptive types without long-lived intermediate forms via a process he called quantum evolution (Simpson 1944, see also Grant 1963). In later linking quantum evolution to the phenomenon of adaptive radiation (Osborn, 1899, 1902), Simpson (1953) hypothesized that this mode of diversification would likely be concentrated early in clade history when peaks on the adaptive landscape, which he called adaptive zones, were vacant. As

adaptive zones fill and ecological opportunity declines, the rate at which novel phenotypes are produced should subsequently slow (Osborn, 1902; Simpson, 1953; Valentine, 1980; Walker & Valentine, 1984), yielding a predictable signal in functional trait data.

One challenge that macroevolutionary biologists face is to infer the topography of the adaptive landscape, and historical dynamics on it, from comparative morphological data. The development of statistical approaches for evaluating tempo and mode in phenotypic evolution on phylogenetic trees has resulted in a rich and diverse toolkit for this task. Some authors, noting that Simpson's model implies that rates of phenotypic evolution should decline over clade history as adaptive zones fill, have used phenomenological (Harmon et al., 2003) or explicit models based on time-varying rates (Blomberg et al., 2003; Freckleton & Harvey, 2006; Harmon et al., 2010) to evaluate support for an "early burst" pattern in comparative data. Relaxing the requirement that shifts to new adaptive zones are concentrated early in clade history has further resulted in models that permit shifts in evolutionary rates as a function of co-occurring species diversity (Mahler

et al., 2010) or along branches of a phylogeny (Eastman et al., 2011; Rabosky, 2014; Venditti et al., 2011) and jumps in trait means independent of evolutionary rate variation (Duchen et al., 2017; Landis et al., 2013; Landis & Schraiber, 2017; Pagel et al., 2022). Other authors have noted that adaptive evolution toward optimal phenotypes implies very different long-term dynamics and covariances between species than a purely diffusive process (Hansen & Martins, 1996), leading to a variety of methods to infer the presence and location of shifts toward new trait optima or, more precisely, the topography of the underlying adaptive landscape, based on a mean-reverting Ornstein-Uhlenbeck process (Butler & King, 2004; Beaulieu et al., 2012; Bastide et al., 2018; Hansen, 1997; Khabbazian et al., 2016; Mahler et al., 2013). Application of these methods to empirical data has yielded mixed results; true early bursts appear to be rare (Harmon et al., 2010), although challenging to detect (Slater & Pennell, 2014) and not entirely unheard of (Astudillo-Clavijo et al. (2015); Slater et al. (2010); Slater and Friscia (2019); Stanchak et al. (2019), while support for diversification on a rugged adaptive landscape has been recovered in some clades (e.g., Benson et al., 2018; Godoy et al., 2019; Mahler et al., 2013; Mongiardino Koch, 2021) but not in others (Law et al., 2019).

Conceptual models of adaptive radiation developed by Osborn (1902) and Simpson (1953) focused on the ecological roles that organisms play in their environments and used phenotypes as proxies, with differences in trait values between lineages being interpreted as evidence for meaningful niche differentiation (Arnold et al., 2001; Givnish, 1997, 2015). Similarly, mathematical models of clade dynamics show that traits that are directly associated with resource use evolve more quickly toward their optima and maintain lower levels of variation than other traits, particularly in the face of competition (Doebeli & Ispolatov, 2017; Gavrillets & Vose, 2005). Although this work predicts that early bursts should only occur on a rugged adaptive landscape, comparative methods are data-hungry and traits associated with resource use are labor-intensive to collect. This has led many authors (e.g., Burbrink & Pyron, 2010; Burbrink et al., 2012; Benson et al., 2018; Godoy et al., 2019; Harmon et al., 2010; Slater et al., 2010; Venditti et al., 2011) to use readily available body size data as a proxy for ecology, due to the presumed correlation between size and many aspects of life history (Peters, 1986). The correlation between body size and axes of ecological diversification is weak in many clades, and reliance on it for more general macroevolutionary analyses has been noted to generate misleading results (Jablonski, 1996; Slater, 2015).

Further complications arise as different models of adaptive radiation predict different relationships between evolutionary dynamics along distinct axes of resource use. Osborn's (1902) original formulation of adaptive radiation (Osborn, 1902) was based on the idea of rapid, adaptive evolution across

multiple distinct trait complexes within a narrow temporal window

(Figure 1a–c). This “simultaneous radiation” model is often associated with adaptive radiations that result from colonization of a new area or the extinction of competitors, both of which dramatically expand the range of ecological opportunities available to the radiating clade (Erwin, 1992; Valentine, 1980; Walker & Valentine, 1984). Support for time homogeneous evolutionary rates or a flat adaptive landscape associated with one axis of resource use would certainly provide evidence against simultaneous radiation, but it is also possible that adaptive radiations might instead unfold sequentially, or in stages, along distinct axes of resource use (1d–f; Diamond, 1986; Gavrillets & Vose, 2005; Glor, 2010; Schluter, 2000; Streebman & Danley, 2003; Silvertown et al., 2006b). Unfortunately, few studies have simultaneously investigated tempo and mode in phenotypic evolution across distinct ecological axes, and those to have done so have yielded contradictory results regarding the order of niche divergence (Ackerly et al., 2006; Ingram, 2011; López-Fernández et al., 2013; Richman & Price, 1992; Silvertown et al., 2006a; Sallan & Friedman, 2012).

In this paper, I provide quantitative phylogenetic tests of the simultaneous and staged models of adaptive radiation using extant terrestrial members of the mammalian order Carnivora (dogs, cats, bears, weasels, etc.). Carnivorans are ideally suited for such a test as they are numerically diverse (>200 extant species), possess a well-resolved phylogeny, and are ecologically disparate. Carnivorans span a range of dietary specializations, from plant and fruit specialists to obligate faunivores, and also exhibit a diversity of locomotor strategies, from semi-aquatic to arboreal, all of which are reflected in dental and skeletal morphology (Friscia et al., 2007; Meachen-Samuels & Van Valkenburgh, 2009; Sacco & Van Valkenburgh, 2004; Samuels et al., 2013; Van Valkenburgh, 1987, 1988, 1991, 2007). In an analysis of tempo and mode in mandibulodental evolution, Slater and Friscia (2019) found strong support for an early phylogenetic partitioning of dental ecomorphological variation in carnivorans, which they interpreted as support for an adaptive radiation along an axes of dietary resource use (see also Meloro & Raia, 2010). This result provides a firm basis for asking similar questions about the evolution of locomotor diversity in the clade, as well as the relationship between macroevolutionary dynamics and the topography of the underlying adaptive landscapes for these traits. Here, I specifically attempt to address three key questions related to the nature of adaptive radiations and our ability to detect them from comparative data. First, I ask whether carnivoran postcranial functional traits exhibit a signature of early, rapid morphological diversification consistent with traditional models of early-burst adaptive radiation and the signal present in some mandibulodental metrics. Then, I ask whether traits associated with dietary resource

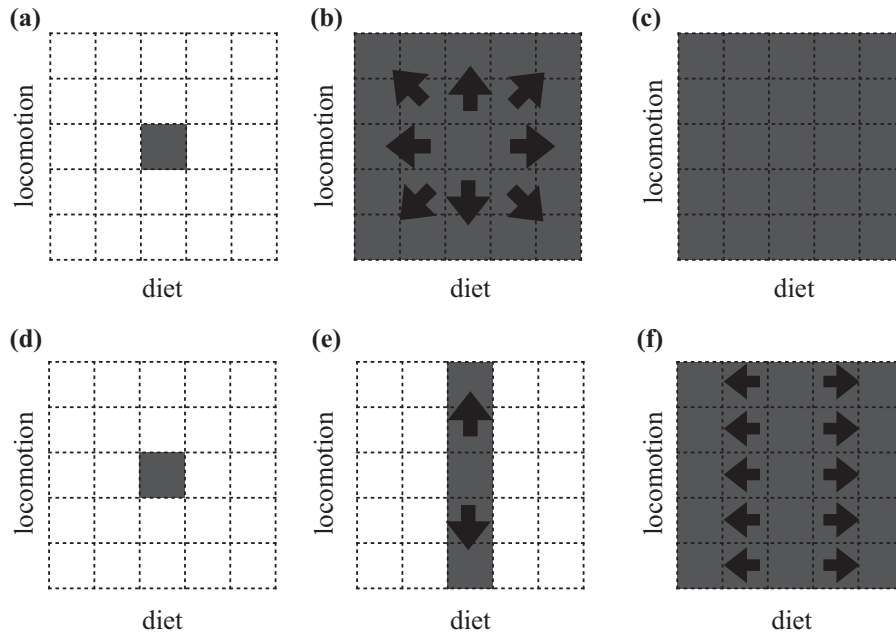


Figure 1. Some theories of adaptive radiation posit that a generalized ancestral form (a) should diversify simultaneously along distinct axes of resource use (here, diet and locomotor mode) (b), establishing complete functional diversity early in clade history with little subsequent change (c). Models of staged adaptive radiation differ from the simultaneous model in suggesting that the same generalized ancestor (d) should first diversify along one axis (frequently substrate-use) (e) and subsequently along another (e.g. resource-use) (f), yielding a sequential pattern of diversification in morphological and ecological data.

use, locomotor mode, and body size diversify simultaneously or sequentially and, if the latter, in which order do carnivorans diversify. Finally, I quantify the topography of the underlying macroevolutionary adaptive landscapes associated with these traits to ask whether variation in the tempo of trait diversification is associated with presence or absence of distinct adaptive peaks. My results indicate that diet, but not locomotor mode or body mass, was the critical axis of resource use exploited by the radiation of crown-group carnivorans.

Materials and Methods

PHYLOGENETIC FRAMEWORK

A well-supported, time-scaled phylogenetic framework is essential for testing hypotheses regarding the tempo and mode of morphological diversification. For this study, I used the maximum clade credibility tree for extant and a few recently extinct terrestrial carnivorans generated by Slater and Friscia (2019). The tree topology and its branch lengths were jointly inferred using BEAST v.2.3.2 (Bouckaert et al., 2014) from a supermatrix of 30 nuclear loci and protein-coding mitochondrial genes for 235 taxa under a relaxed uncorrelated log-normal clock (Drummond et al., 2006). The unresolved fossilized birth-death process (Gavryushkina et al., 2014, 2016; Heath et al., 2014) was used as a tree prior, and 250 phylogenetically constrained fossil taxa

with associated stratigraphic ages were used to calibrate the relaxed molecular clock. The resulting topology is well-supported (94% of splits have posterior probabilities > 0.9) and 95% highest posterior density intervals for node ages are narrow (mean = 2.65 Myr).

ECOMORPHOLOGICAL DATA

Species mean values for 28 mandibulodental linear measurements as well as $\ln(\sqrt[3]{\text{body mass}})$ for 198 species of extant carnivorans were taken from Slater and Friscia (2019). These were supplemented with 24 new measurements of limbs, scapulae, and pelvises from 547 specimens spanning 135 species of extant carnivorans (mean = 4, range = 1–15 specimens per species) housed in the mammalogy collections of the National Museum of Natural History (Smithsonian Institution), Washington D.C., and the Field Museum, Chicago. Measurements were taken using Mitutoyo digital calipers to 0.01mm precision for measurements <250 mm, or with a tape measure to 1mm precision for measurements >250 mm and were selected to allow the computation of 16 ratio-based functional indices (Table 1) that have previously been identified as useful in distinguishing carnivores with distinct locomotor strategies (Davis, 1964; Gould, 2014; Samuels et al., 2013; Van Valkenburgh, 1987). Measurements of the metacarpals and tarsals, although highly informative in distinguishing among mammals with distinct locomotor modes (Nations et al., 2019;

Table 1. Post-cranial functional indices computed for carnivoran species in this study, along with their constituent measurement, functional interpretation, and source(s).

Index	Interpretation	Reference
Scapula Index	Scapula shape, described as the ratio of distance across lines parallel to the spine that intersect the anterior and posterior borders of the scapula to the height from the glenoid cavity to the vertebral border, along the spine. Describes the expansion of shoulder musculature versus contribution of scapula to limb elongation	Davis (1964)
Glenoid Index	Ratio of glenoid length to glenoid width. Describes shape of shoulder joint, with values closer to 1 suggesting a more mobile shoulder joint	Davis (1964)
Brachial Index	Ratio of radius length, measured from the capitulum to inferior scapholunar articular surface, to humerus length, measured from superior margin of head to distal trochlea. Arboreal and natatorial taxa tend to have relatively short distal forelimbs.	Davis (1964), Samuels et al. (2013).
Humeral Epicondylar Breadth	Breadth across the humeral epicondyles, divided by humeral length. Provides a measure of the relative size of forearm musculature, which is associated with digging, swimming behavior	Samuels et al. (2013)
Capitulum Shape	Ratio of mediolateral to anteroposterior length of radial capitulum. The capitulum is more circular in arboreal taxa but more ovate in semi-fossorial species.	Davis (1964)
Fossoriality Index	Length of the olecranon process, measured from the posterior margin of the ulnar notch to the tip of the olecranon, divided by functional length of the ulna. Measures the mechanical advantage of the triceps brachii and therefore the force of elbow extension, which is elevated in fossorial taxa	Samuels et al. (2013)
Crural Index	Functional length of Tibia divided by functional length of Femur, measured from femoral head to condyles. Measures the degree of distal elongation of the hindlimb, which is reduced in arboreal, natatorial and fossorial taxa and increased in terrestrial taxa.	Davis (1964), Samuels et al. (2013)
Femoral Shaft Shape	Ratio of mediolateral to anterioposterior femoral diameter at the midshaft. Medirolateral expansion of the femoral shaft, relative to anteroposterior dimension, occurs in some natatorial taxa	Samuels et al. (2013)
Femoral Epicondylar Width	Bicondylar breadth of the femur divided by functional length. Provides a measure of attachment area for knee and plantar flexors, as well as extensors of the tarsal digits, and therefore of in-force of the distal posterior limb	Samuels et al. (2013)
Patella Groove Index	Width of the patellar groove, measured from medial to lateral keel, divided by bicondylar breadth. The tendon of m. quadriceps passes across the patellar groove and so the size of this index provides a measure of in-force of crus extension	Gould (2014)
Femoral Epicondylar Index	cranio-caudal depth of the femoral condyles divided by bicondylar breadth. Arboreal mammals tend to have femoral condyles that are wider than they are deep	Gould (2014)
Gluteal Index	Greatest distance from the femoral head to the greater trochanter divided by functional length of the femur. The greater trochanter is the site of origin of m. gluteus medius and m. gluteus profundus, and this index therefore provides a measure of the in-lever of these major hip extensors	Samuels et al. (2013)
Intermembranal Index	Ratio of the sum of humeral and radial length to the sum of femoral and tibial length. "Cursorial" carnivorans tend to have fore and hind limbs that are more equal in length and therefore possess intermembranal indices closer to 1 than do other taxa	Davis (1964), Samuels et al. (2013)

(Continued)

Table 1. (Continued).

Index	Interpretation	Reference
Ischial Breadth	Bilateral breadth across the ischial tubers divided by maximum length of the pelvis. The Ischial tuberosity is the origin for the hamstring muscles so this metric partially captures information on the mechanical advantage of hip extensors and knee flexors. Terrestrial and cursorial taxa tend to have large values of relative ischial breadth, while fossorial taxa possess low values	Davis (1964)
Iliac Breadth	Bilateral breadth at the widest point across the iliac crests divided by maximum length of the pelvis. The ilia provide surface for the origin of the m. gluteus medius and m. sartorius and this metric therefore provides information on the relative mechanical advantage of the hip extensors, flexors, and stabilizers. It is increased in fossorial and large bodied taxa	Davis (1964)
Pubic Symphysis Length	Length of the pubic symphysis divided by pelvic length. Shortening of the symphysis has been attributed to increased horizontal thrust on the pelvis, such as in fossorial and natatorial carnivorans	Davis (1964)

Samuels et al., 2013), were not taken here as these elements were infrequently available in osteological preparations of small-bodied taxa and their inclusion would therefore have reduced the number of species that could be sampled for macroevolutionary analyses. I corroborated that postcranial measurements allowed the discrimination of carnivorans with different substrate use preferences by performing a linear discriminant analysis using the `lda` function from the MASS library (Venables & Ripley, 2002, Supplementary File A). Each species with available postcranial measurements was assigned to one of Eisenberg's (1981) substrate use categories (Terrestrial, Scansorial, Arboreal, Natatorial, Semi-Fossorial) following Polly (2010), with some minor edits based on literature review. Leave-one-out cross-validation (Supplementary File A) showed that most taxa can be assigned to their locomotor grouping with relatively high posterior probability, and that where mis-classifications occur, they tended to place taxa into similar locomotor groupings (e.g., scansorial taxa classified as terrestrial).

MACROEVOLUTIONARY MODELS OF POST-CRANIAL EVOLUTION

Slater and Friscia (2019) recovered strong support for an “early burst” of evolution in carnivoran molar traits but not in other mandibulodental characteristics or body mass. They considered this result to be consistent with adaptive radiation along dietary axes and cautioned that different functional indices may provide different macroevolutionary signals. To assess whether locomotor diversification in carnivorans occurred along one or a few axes of functional post-cranial variation, I evaluated the fit of the same three macroevolutionary models (constant-rates Brownian motion, single-stationary-peak Ornstein-Uhlenbeck, and early burst) to each of the 16 functional trait indices described above by using the `fitContinuous()` function from the `geiger` library (Pennell

et al. 2014, Supplementary File B). To account for measurement error I added sampling variances to the diagonals of the model-specific variance-covariance matrices. Relative model fit was assessed by computing small-sample corrected Akaike Weights, w_A , for each model.

THE ACCUMULATION OF ECOMORPHOLOGICAL DISPARITY THROUGH TIME

The simultaneous radiation model predicts that diversification along dietary and substrate-use axes should occur at approximately the same time, while the staged radiation model predicts that locomotor evolution should precede dietary diversification. To differentiate between these two forms of adaptive radiation, it is therefore necessary to assess which axis of trait variation, if any, was exploited first. In the paleobiological literature, weighted average times, often referred to as the Center of Gravity (CG), have long been used as measures of bottom- or top-heaviness in disparity and diversity profiles (Foote, 1991; Gould et al., 1977). Past levels of disparity cannot be inferred from phylogenies of extant taxa, but the partitioning of variation over phylogeny can be evaluated using Disparity Through Time analysis (DTT; Harmon et al., 2003), and this method lends itself well to CG descriptors.

DTT analyses track the standardized average morphological variance of subclades that are extant at time points (= node ages) spanning the root of a phylogeny to the final divergence event in the tree, where the standardization is relative to the total variance of the clade (Figure 2). If d_i is the standardized average subclade disparity at time t_i , then the center of gravity of the DTT profile can be computed as

$$CG = \frac{\sum(d_i t_i)}{\sum(d_i)}. \quad (1)$$

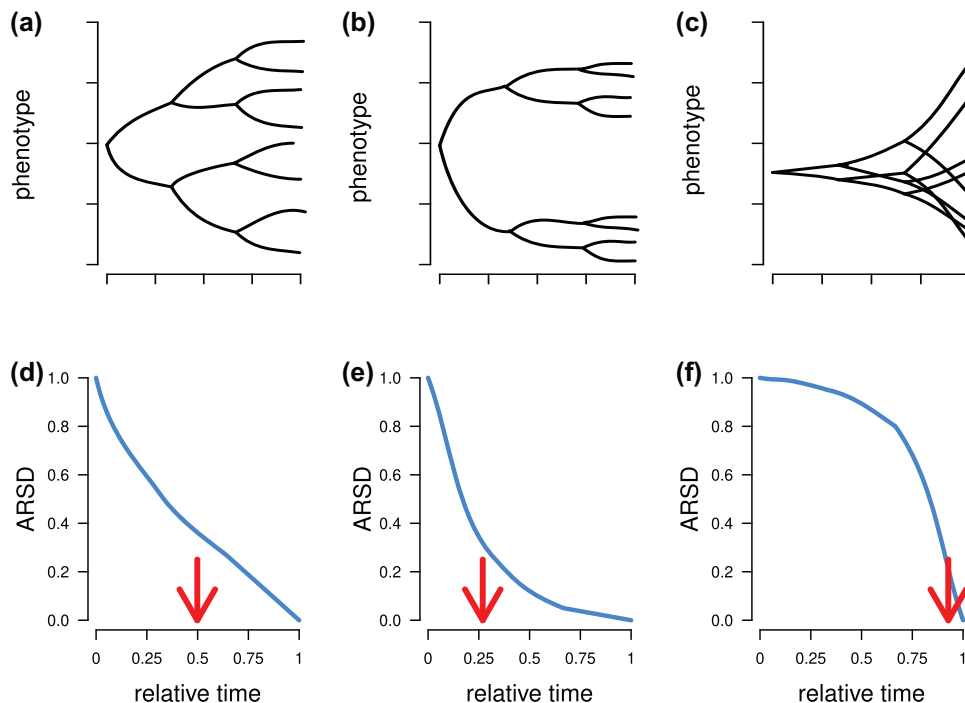


Figure 2. When the mode of phenotypic evolution is consistent with a random walk, phenotypic variation accumulates gradually over phylogeny (a), leading to a pattern in which the average relative subclade disparity through time (ARSD) declines steadily from 1 (i.e. all variance within a single clade) to zero (all clades are single tips) as time progresses from root to tip (d) and a center of gravity (red arrow) that falls at approximately the midpoint. Under an “early burst” scenario, trait variation does not accumulate steadily but, rather, seems to accumulate early in the history of the clade (b), yielding an ARSD curve that drops precipitously and then levels out (e), and a center of gravity that falls below the midpoint of clade history. Evolutionary modes such as “late bursts” or time constant rates in a bounded space (e.g., constraints) yield a pattern in which phenotypic variation accumulates toward the tips of the tree (c) and an ARSD curve that declines very slowly until late in clade history (f), with a very high center of gravity.

Because the average subclade disparity is standardized relative to total clade variance, it declines from a value of $d_t = 1$ at relative time $t = 0$ (i.e. along the root edge of the phylogeny) to $d_t = 0$ at the final branching event on the tree where each extant lineage is an individual species. This conveniently yields an expectation that CG should fall at $t \approx 0.5$ (see Supplementary File D for a simulation-based confirmation), with low CGs representing an early partitioning of variation among subclades and high CGs representing the late maintenance of high within-subclade variation. Of course, the exact expected CG for any clade will depend on the shape of the tree (Foote, 1993) and this expectation can be conveniently assessed and compared with the empirical CG via simulation under a constant rates process. This approach is conceptually similar to the Divergence Order Test (DOT) of Ackerly et al. (2006), which calculates the center of gravity for unstandardized independent contrasts (Felsenstein, 1985) to determine whether large divergences in trait values occur early or late in clade history. A potential limitation of the DOT is that contrasts are computed using ancestral state estimates that are, themselves, inferred under a time-homogeneous model of evolution (Sallan & Friedman, 2012). Furthermore, the DOT explicitly

assumes that adaptive radiation results from decelerating rates of phenotypic evolution, whereas similar patterns may result from myriad other process, including evolution on a rugged adaptive landscape (e.g., Harmon et al., 2021; Revell et al., 2005). Unlike the DOT, the DTT center of gravity does not explicitly assume an underlying evolutionary process but, instead, provides a means of describing and statistically evaluating whether the temporal structure of morphological variation within and among clades is consistent with the hypothesis of early variance partitioning among clades (Foote, 1996).

I calculated CGs for mandibulodental and post-cranial data, as well as for body mass, and evaluated their deviation from constant-rates expectations using 9999 datasets of equivalent dimensionality simulated under a constant-rates Brownian motion process (Supplementary File C). I used the original linear measurements, rather than the functional ratios, for the mandibulodental and post-cranial datasets. However, in order to remove consideration of overall size and to focus on ecomorphological shape, these linear dimensions were transformed into log-shape variables (Darroch & Mosimann, 1985; Mosimann, 1970) by dividing each by the geometric mean measurement for each species

and then taking the natural log of this ratio. The high dimensionality of the mandibulodental and post-cranial traits poses challenges for efficient and accurate macroevolutionary inference. To reduce data dimensionality, I therefore performed a principal components (PC) analysis on the correlation matrices for each set of log-shape variables using the `prcomp` function in the `stats` library and used the broken-stick method (Frontier, 1976) to determine the optimal number of PCs to retain for further analysis. This approach tends to identify a smaller number of axes than other methods, such as the Kaiser-Guttman criterion (axes with eigenvalues ≥ 1) or minimum/cumulative values of relative eigenvalues, but outperforms these approaches in simulation tests (Jackson, 1993). CGs were finally compared across sets of traits to determine the relative order of divergence.

THE ADAPTIVE LANDSCAPE OF CARNIVORAN ECOMORPHOLOGICAL DIVERSIFICATION

Simple macroevolutionary models and centers of gravity provide insights into the phylogenetic partitioning of morphological variation and hint at the kinds of evolutionary processes that might be responsible, but they do not allow us to discriminate between modes of adaptive radiation based purely on declining rates and those resulting from adaptive evolution on a rugged landscape. To understand the context for carnivoran ecomorphological evolution, I therefore estimated the macroevolutionary landscapes for mandibulodental and post-cranial traits, as well as for body mass, using the phylogenetic expectation-maximization approach implemented in the `PhylogeneticEM` library (Bastide et al., 2018). This approach assumes that trait evolution follows an Ornstein-Uhlenbeck process in which traits evolve toward a primary optimum or, in the case of multivariate trait evolution, a vector of primary optima (θ). The method then attempts to identify the presence and location of shifts in the vector of primary optima. Univariate traits evolve according to a standard Ornstein-Uhlenbeck process (Hansen & Martins, ; Hansen, 1997) but traits can also be modeled in a true multivariate framework, with variances and covariances specified by an evolutionary rate matrix \mathbf{R} , although a single strength of attraction, α , must then be shared by all traits.

As with DTT analyses, I used PC axes retained by the broken stick criterion for each multivariate dataset. The maximum number of shifts allowed, k_{\max} , was set to 30, based on preliminary trials; the `nbr $_{\alpha}$` argument, which determines the resolution of the grid of α values evaluated, was set to 100; the `LINselect` option was used for model selection. For convenience of interpretation, α values were converted into phylogenetic half-lives ($t_{1/2} = \frac{\ln(2)}{\alpha}$), which correspond to the time taken for a trait to move halfway from its ancestral value to a new primary optimum after a regime shift and the diffusion parameters of the stochastic component of the OU process were converted to vectors of

equilibrium variances ($\mathbf{V}_{\text{equil}} = \frac{\sigma^2}{2\alpha}$), which represent the expected variances of the process along each axis of shape variation at stationarity (Hansen, 1997).

Results

MACROEVOLUTIONARY MODEL FITTING

Contrary to predictions of both the simultaneous and staged models of adaptive radiation, I found no evidence for early bursts of locomotor adaptation within Carnivora. Brownian motion or SSP models were uniformly recovered as best-fitting across the 16 functional indices, with support for the early burst model never exceeding that of BM or SSP (Table 2), and maximum likelihood estimates of the early burst exponential rate decline parameter were never large (maximum $r = -0.0016$, equivalent to a rate half-life of 433 myr). Maximum likelihood estimates of the α parameter of the OU process are relatively small, at most corresponding to a phylogenetic half-life of 6.3 myr (Femoral Shape), and more typically in the range of 23–34 myr.

THE ACCUMULATION OF ECOMORPHOLOGICAL DISPARITY THROUGH TIME

Principal components analysis of the mandibulodental log-shape variables yielded 2 significant PCs according to the broken stick analysis. A plot (Fig. 3a) of the shape space defined by PC1 (~64% of the variance) and PC2 (12.5% of the variance) shows a generally obvious phylogenetic partitioning, with more carnivorous clades (e.g., Felidae, Hyaenidae) occupying negative PC1 positions due to a combination of deep and stout jaws, large jaw muscle moment arms, robust canines and small or absent second and third molars, the bears (Ursidae) occupying positive PC1 and negative PC2 positions due to their large posterior lower molars, and weasels (Mustelidae) and skunks (Mephitidae) occupying positive PC1 and positive PC2 positions due to the large talonid of the lower first molar. Mongooses (Herpestidae), civets (Viverridae), and dogs (Canidae) fall closer to the origin of this plot due to their relatively plesiomorphic dental conditions. PC loadings for retained PCs are provided in Supplementary Table C1.

Three principal components were retained from analysis of the post-cranial log-shape variables. A plot of PC1 and PC2 (Fig. 3b) shows some phylogenetic partitioning, with Canidae and Hyaenidae in particular clustering in the positive PC2 region due to their especially tall and narrow scapulae, pelvis with broad ischia and a short symphysis, and long distal limb elements. A functional signal is also clearly present, with more arboreal taxa from several clades (*Bassaricyon* sp., *Arctogalidia*, *Martes*, *Cryptoprocta*) tending toward negative PC2 scores due to their short broad scapulae, narrow pelvis with a long symphysis,

Table 2. Akaike Weights for the three models (BM: Brownian motion; SSP: single stationary peak; EB: early burst) fitted to each Functional Index. The weight corresponding to the best fitting model for each index is bolded. Parameter estimates are provided for the best fitting model; note that the α parameter is only relevant to SSP models.

Functional Index	BM	SSP	EB	Root	Rate	α
Scapula Index	0.59	0.21	0.21	0.85	2.9×10^{-4}	–
Glenoid Shape	0.01	0.99	0.00	0.69	2.1×10^{-4}	0.05
Brachial Index	0.12	0.83	0.04	0.84	6.3×10^{-4}	0.03
Humeral Epicondylar Breadth	0.52	0.29	0.18	0.25	9.6×10^{-5}	–
Capitulum Shape	0.38	0.49	0.13	1.46	4.9×10^{-4}	0.03
Fossoriality Index	0.16	0.78	0.06	0.14	7.1×10^{-5}	0.03
Crural Index	0.37	0.50	0.13	0.93	5.2×10^{-4}	0.02
Femoral Shaft Shape	0.00	1.00	0.00	1.12	1.0×10^{-3}	0.11
Femoral Epicondylar width	0.52	0.30	0.18	0.19	3.0×10^{-5}	–
Patella Groove Index	0.44	0.4.0	0.16	0.43	6.6×10^{-5}	–
Femoral Epicondylar Index	0.23	0.69	0.08	0.01	1.0×10^{-6}	0.03
Gluteal Index	0.44	0.4.0	0.16	0.18	2.9×10^{-5}	–
Intermembranal Index	0.39	0.47	0.14	0.84	2.0×10^{-4}	0.02
Ischial Breadth	0.12	0.83	0.04	0.58	4.6×10^{-4}	0.03
Iliac Breadth	0.58	0.21	0.21	0.64	6.0×10^{-4}	–
Pubic Symphysis Length	0.57	0.23	0.2.0	0.27	1.5×10^{-4}	–

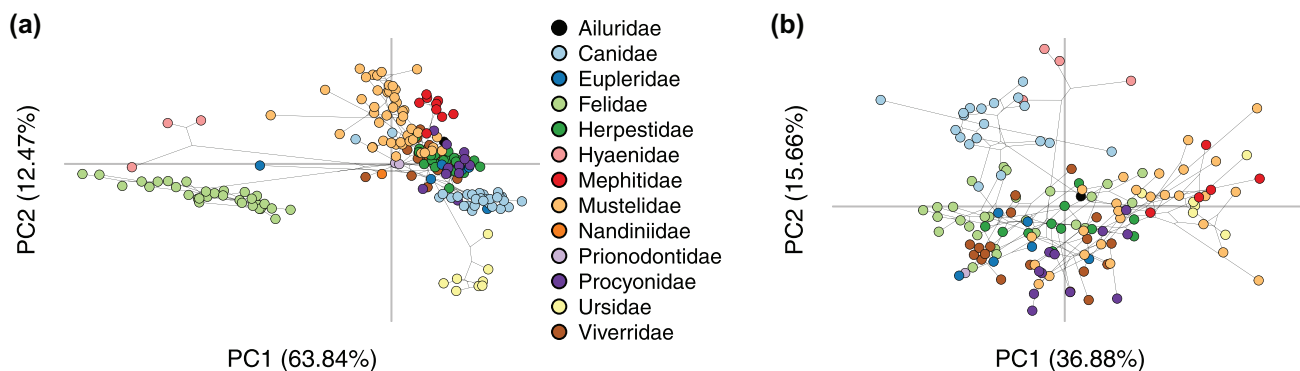


Figure 3. Principal components analysis of log shape variables from the mandibulodental log shape variables (a) shows a strong phylogenetic partitioning. The shape space defined by PCs 1 and 2 of log-shape variables from the post-cranial skeleton (b) shows slight separation of some clades and functional groups along PCs 1 and 2, but with much more overlap than is found for the mandibulodental data.

and broad distal femora. More terrestrial (e.g. *Ursus* sp.), semi-fossorial (e.g. *Taxidea*, *Meles*, *Mephitidae*), and natatorial (otters; Lutrinae) species trend toward the positive end of PC1 due to their short broad limbs and robust girdles, while more scansorial taxa (Felidae, some Viverridae and Eupleridae) trend toward negative PC1 scores due to more elongate and gracile limbs. PC loadings for retained PCs are provided in Supplementary Table C2.

The average subclade disparity through time profile for mandibulodental traits is broadly consistent with constant-rates expectation for the first 15 million years of carnivoran history, as indicated by a curve (solid line) that tracks the mean of the Brownian motion simulations (dashed line; Figure 4a). However,

mandibulodental subclade disparity shows a substantial drop in the mid-Oligocene and lies at the lower bound of the constant-rates expectation (shaded area) for the rest of the Cenozoic (Figure 4a). The Center of Gravity for mandibulodental average subclade disparity appears slightly top-heavy (CG = 0.58); however, the expected CG is dependent on the structure of the phylogeny (Supplementary File D) and is, in fact, significantly lower than expected under a constant rates process (95% quantiles under BM = 0.60–0.72; $P = 0.008$; Fig. 4d). As suggested by the disparity through time curve (Figure 4b) the Center of Gravity for post-cranial traits (Fig. 4c) is much higher than that for mandibulodental traits and is significantly higher than expected under a constant-rates process (CG = 0.68, $P = 0.002$;

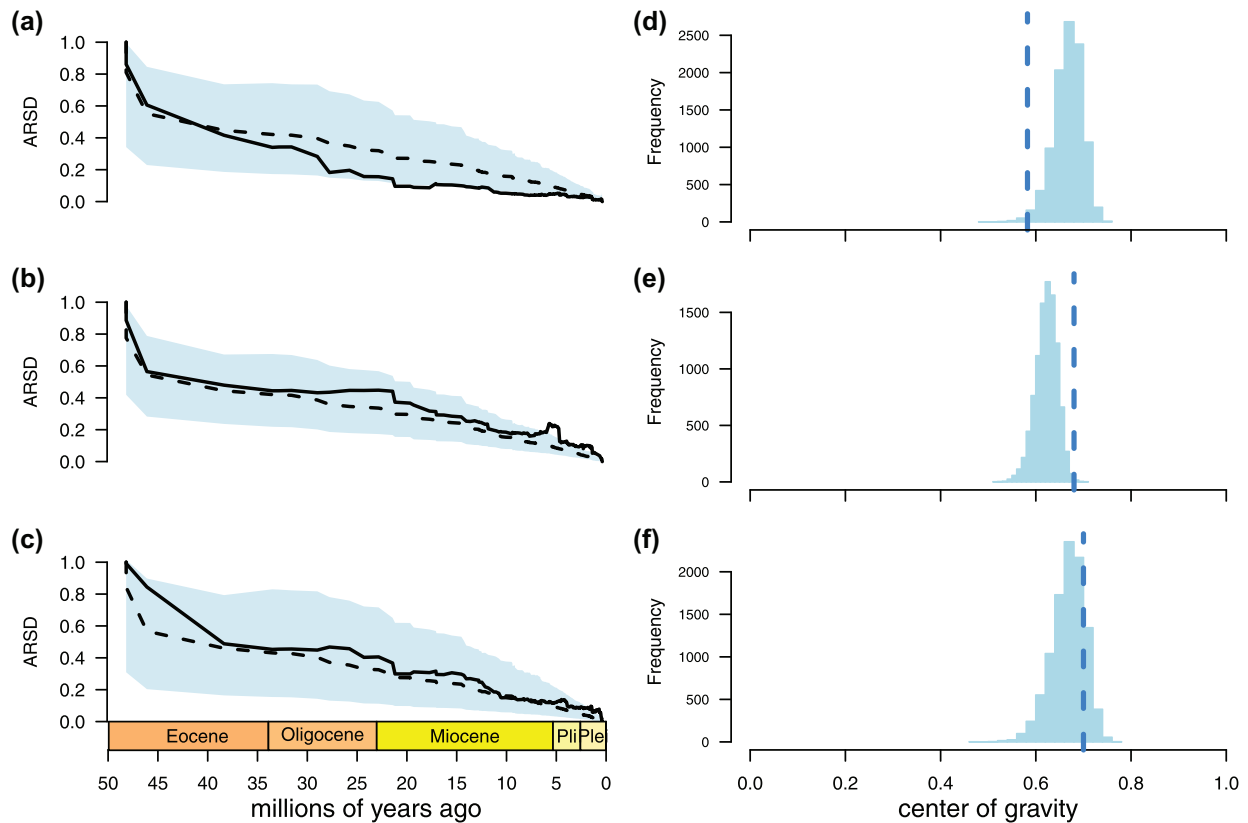


Figure 4. Disparity through time plots for carnivoran mandibulodental (a), post-cranial (b) and body mass (c) data. The solid line is the average relative sub-clade disparity for the data set, the dashed line is the median from 9999 datasets simulated under a constant rates process, and the shaded area corresponds to the 95% quantiles of the simulated data. Shown on the right (d-f) are the corresponding centers of gravity for the simulated datasets (solid bars) and the center of gravity for the trait data (dashed vertical line).

Figure 4e). The partitioning of body mass variation among and within clades is entirely consistent with a constant rates process (Fig. 4c), with a CG that is virtually indistinguishable from the BM expectation for a univariate trait ($CG = 0.7$, Expectation = 0.7 , $P = 0.177$; Figure 4f). The order of divergence, from earliest to most recent, therefore appears to be mandibulodental traits, body mass, and then post-cranial traits.

The adaptive landscape of carnivoran ecomorphological diversification

The dietary adaptive landscape estimated from the first two mandibulodental PC axes by the PhylogeneticEM algorithm contains 21 peaks that are distinct from the ancestral regime. Note that PhylogeneticEM does not identify and collapse convergent shifts (shifts to similar optimal morphologies) and so some of these peaks may overlap one another (see below). The optimal configuration is shown in Figure 5a; 72 equivalent configurations were recovered that differ in the local arrangement of shifts (Supplementary File C). For example, shifts may be swapped between sister taxa (sequential vs independently acquired). The strength of the pull to these optima is relatively strong ($\alpha = 0.34$),

corresponding to a phylogenetic half-life of $\sim t_{1/2} = 2.04$ myr. Combined with estimates for the stochastic diffusion component of the OU process, this yields very small equilibrium variances along each axis of shape variation ($V_{equil} = [0.78, 0.20]$).

Within feliform carnivorans, peak shifts are recovered along the branches leading to an unnamed clade comprising Prionodontidae + Felidae, Felidae, Pantherinae, the Lynx and Puma clades within Felinae, Hyaenidae, and terminal branches leading to the spotted hyaena *Crocuta crocuta* and the Malagasy Fossa *Cryptoprocta ferax*. All of these taxa are hypercarnivorous relative to other members of the suborder. Additional shifts are found along the branch leading to the binturong (*Arctictis*), the Viverrinae (exclusive of *Viverricula indica*) and *Eupleres goudotii*, representing dietary shifts toward frugivory and insectivory. Among caniform carnivores, shifts are recovered along the branch leading to Canidae and within the family on terminal branches corresponding to the hypercarnivores *Speothos venaticus* and *Cuon alpinus*, Ursidae, Tremarctinae + Ursinae (i.e., Ursidae minus the giant panda *Ailuropoda*), Musteloidea, Mephitidae, Mustelidae, the honey badger *Mellivora capensis*, the wolverine *Gulo gulo*, Mustelinae and Lutrinae. These shifts

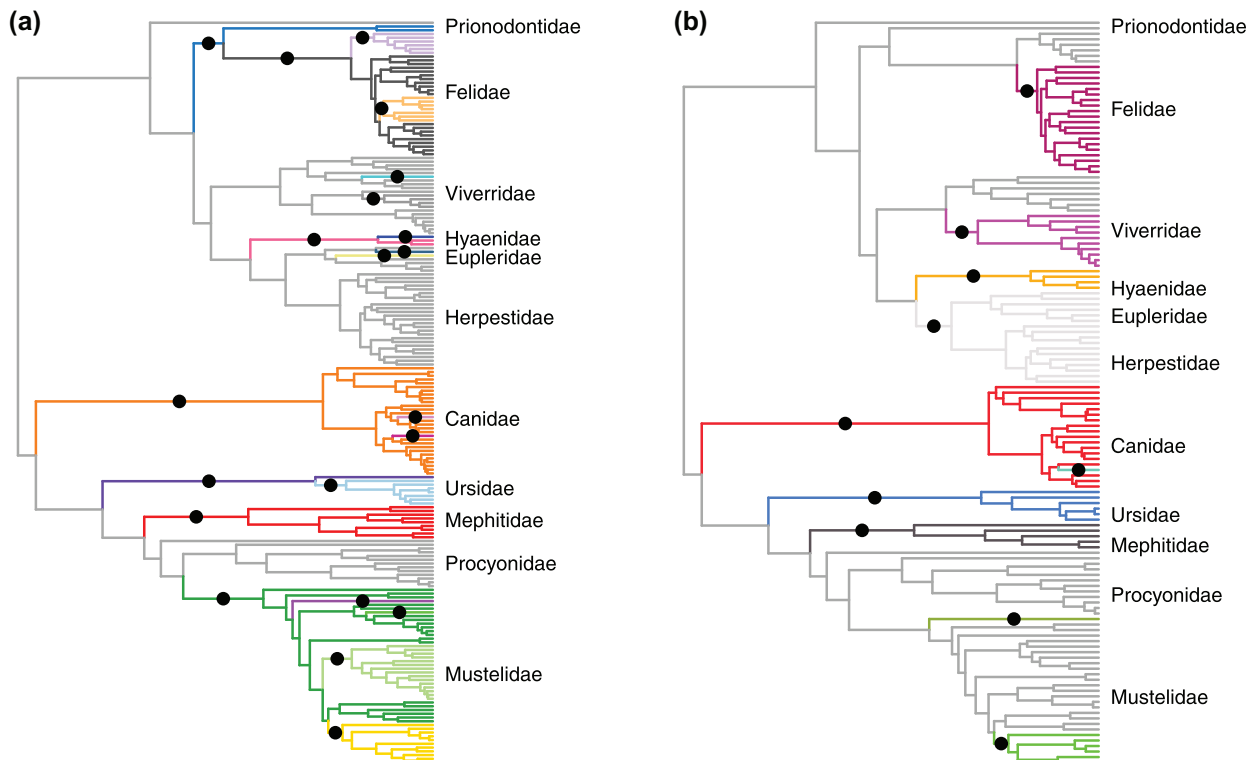


Figure 5. Carnivoran phylogeny showing the 25 adaptive peak shifts for mandibulodental traits identified by the `phyloEM` approach. Black circles are placed at the midpoint of each branch along which a peak shift is inferred to have occurred, with branches inheriting and retaining that peak colored distinctly. Clade names are provided to orient the reader to shifts described in the results and are not intended to be exhaustive.

represent a more diverse set of dietary ecologies, ranging from more carnivorous (Mustelinae, *Gulo*) or piscivorous (Lutrinae) to more omnivorous (Ursidae).

The adaptive landscape for post-cranial traits showed fewer peaks than that for mandibulodental traits, with 10 shifts identified in total, and 3 equivalent configurations. For the optimal configuration (Figure 5b), shifts occur within Feliformia along the branch leading to Felinae, Viverrinae, Hyaenidae, and Eupleridae + Herpestidae. With the exception of Hyaenidae, which is more terrestrial and “cursorial” and, perhaps, Prionodontidae + Felidae, which is more scansorial, a functional signal here is not apparent. Within Caniformia shifts appear to have more obvious functional interpretation. Shifts are identified along the branches leading to the terrestrial Canidae (with an additional shift along the branch leading to the long-legged maned wolf *Chrysocyon brachyurus*), the large-bodied, plantigrade Ursidae, the semi-fossorial skunks (Mephitidae) and American badger (*Taxidea taxus*), and the semi-aquatic Lutrinae. In addition to containing fewer peaks, the post-cranial adaptive landscape is less rugged than that for mandibulodental traits. The rate of adaptation ($\alpha = 0.161$) translates to a phylogenetic half-life of $t_{1/2} = 4.3$ myr. This also results in equilibrium variances that are much larger than those for the dental traits ($V_{equil} = [2.29, 1.22, 1.09]$).

A flat adaptive landscape emerges for body mass, with no shifts detected and a strength of pull the mean that is an order of magnitude smaller than that for dental and post-cranial traits ($\alpha = 0.0177$, $t_{1/2} = 39$ myr).

Discussion

Models of adaptive radiation were originally developed to explain the early, rapid appearance of fundamentally distinct (“essentially discontinuous”; Simpson, 1953, p.223) modes of life within diversifying clades in the fossil record (Osborn, 1902). A modern focus on the “early rapid” component of these models has led to the development of numerous methods for assessing temporal variation in macroevolutionary rates (Blomberg et al., 2003; Freckleton & Jetz, 2009; Harmon et al., 2003, 2010; Venditti et al., 2011) but yielded limited support for this mode of diversification in body size and shape data. The concept of an underlying adaptive landscape that links form to fitness, while also crucial to these models, has received less attention in modern phylogenetic tests of the early burst adaptive radiation hypothesis (but see Aristide et al., 2018; Mahler et al., 2013; Mongiardino Koch, 2021), and it therefore remains unclear whether adaptive radiations unfold simultaneously across distinct

axes of resource use, or sequentially with some axes being exploited before others. Using methods that focus on the temporal accumulation of morphological variation (Harmon et al., 2003; Slater & Pennell, 2014) and the topography of the underlying adaptive landscape (Bastide et al., 2018), rather than variation in rates, I found that significant early partitioning of mandibulodental morphological variation across carnivoran phylogeny occurs on a rugged adaptive landscape with multiple peaks, consistent with classic ideas about adaptive radiation (Osborn, 1902; Simpson, 1953; Valentine, 1969). Although strong support for this mode of adaptive radiation is present in traits related to diet, its signal is not present in body mass data or for traits related to locomotor behavior and substrate use. These findings suggest that the nature of adaptive radiation is more complex than simple univariate tests might suggest, and provide some hints regarding fruitful directions that future work might explore.

CARNIVORANS ADAPTIVELY RADIATED ON A RUGGED, MULTI-PEAK DIETARY LANDSCAPE

Competition for dietary resources has long been viewed as a critical factor promoting the evolution of morphological innovations in some of the most iconic examples of adaptive radiation (Darwin, 1845; Grant, 1981; Lack, 1947; Osborn, 1902; Schluter & Grant, 1984). Theoretical models lend support to this hypothesis by predicting that early rapid evolution along axes of resource use should promote speciation and stable coexistence (Doebeli & Ispolatov, 2017; Gavrillets & Vose, 2005), while genomic evidence has started to accumulate that indicates that relatively simple, and sometimes repeatable, genetic or transcriptomic “key innovations” can produce morphological features associated with distinct dietary specializations (Berenbaum et al., 1996; Lamichhaney et al., 2015; McGee et al., 2020; Vizueta et al., 2019). Carnivorans and their extinct stem lineages (Carnivoramorpha), are characterized by the presence of a carnassial pair, a modified upper fourth premolar and lower first molar that form a scissor-like pair of blades for efficiently cutting tough materials such as skin and connective tissue, which first appeared in the fossil record during the latest Paleocene (Solé et al., 2016). Although carnassials have evolved multiple times in mammalian evolutionary history, the true novelty that enabled innovation (sensu Erwin, 2017, 2021) in Carnivoramorpha, relative to extinct mammalian clades such as Creodonta and Borhyaenidae or the extant dasyurid marsupials (Dasyuridae), is that carnassialization is restricted to a single locus and that the basin-like posterior part of the lower carnassial tooth is free to occlude with the non-carnassial upper first molar (Van Valkenburgh, 1999, 2007). By varying the proportion of the lower carnassial given to slicing (the anterior trigonid) versus grinding (the posterior talonid), carnivorans can therefore optimize efficiency at processing different types of food, ranging from vertebrate flesh to fruits or even

bamboo stems (Van Valkenburgh, 2007; Wesley-Hunt, 2005). Ecomorphological (Van Valkenburgh, 1988, 1991, 2007), and behavioral (Van Valkenburgh, 1996) evidence supports a prominent role for molar morphology in determining dietary resource use, and comparative evidence for early burst-like dynamics in carnassial shape has been previously recovered (Meloro & Raia, 2010; Slater and Friscia, 2019). Recent work (Asahara et al., 2016) has also demonstrated that carnivoran-specific patterns of selection on the *Bmp7* gene are associated with correlations between the relative size of the second molar and the size of the talonid relative to the trigonid, both of which correlate with dietary ecology. This may have permitted carnivorans a greater degree of evolutionary versatility in their dentition, such as lower second molars that are larger than the lower first and third molars in ursids, than for other mammalian clades which are constrained by more fundamental developmental rules (Kavanagh et al., 2007; Polly, 2007).

As noted by Slater and Friscia (2019), support for early-burst dynamics in datasets comprising only extant taxa could potentially arise due to selective pruning of phylogeny by extinction, yielding a phylogenetically conservative distribution of traits that only the incorporation of fossil evidence could overturn (Slater et al., 2012). Although the distribution of multivariate mandibulodental trait values is phylogenetically conservative for carnivorans, the relatively fast rate of adaptation estimated by phylogeneticEM indicates that this result is not due to temporally declining rates per se but, rather, that the evolution of mandibulodental disparity in carnivorans occurred on a rugged adaptive landscape as predicted by qualitative (Osborn, 1902; Simpson, 1944, 1953) and quantitative (Gavrillets & Vose, 2005) models of adaptive radiation. The rich carnivoran fossil record could and should be leveraged to further interrogate this finding, but it is unclear whether this would result in a significant overturning of it, as selective extinction should increase, rather than decrease, phylogenetic signal in comparative data. It also remains unknown whether this mode of diversification is likely to be unique to carnivorans among mammalian orders due to their novel dental anatomy, or whether it represents a more general pattern of ecomorphological diversification (Van Valen, 1971). Fulwood et al. (2021) found no support for early burst patterns in molar topographic complexity data across Lemuriformes (Primates), but Aristide et al. (2018) found evidence for distinct adaptive peaks in cranial shape data for Platyrrhini, driven largely by variation in the craniofacial skeleton that is associated with multidimensional niche membership. Outside of Primates, much comparative macroevolutionary work has relied on body mass, which is only weakly predictive of broad dietary niche (Grossnickle, 2020; Price & Hopkins, 2015), and there remains much potential for rigorously evaluating hypotheses regarding modes of evolutionary

diversification across mammalian phylogeny using ecomorphological data.

THE LOCOMOTOR LANDSCAPE IS LESS RUGGED THAN THE DIETARY LANDSCAPE ... AT LEAST FOR CARNIVORA

Conceptual and theoretical models of staged adaptive radiation have tended to assume that divergence along habitat-use axes should precede divergence along axes of dietary resource use (Diamond, 1986; Gavrilets & Losos, 2009; Streebman & Danley, 2003). Empirical evidence in favor of this form of staged radiation is mixed (Ackerly et al., 2006; Ingram, 2011; Richman & Price, 1992; Silvertown et al., 2006a; Sallan & Friedman, 2012), but has been unclear whether this lack of support reflects real underlying evolutionary dynamics or limiting assumptions regarding rate constancy or the estimation of ancestral states (Glor, 2010). Based on the methods employed here, there is no evidence for an early partitioning of post-cranial morphological variation among carnivoran clades, despite the associated adaptive landscape exhibiting several distinct peaks. It is possible that the lack of signal for early rapid evolution recovered here reflects the omission of measurements from ecologically important post-cranial elements rather than a true lack of signal; among unmeasured elements within my dataset, high phylogenetic signal in calcaneal gear ratio, associated with foot posture and open versus closed habitat use, has been found for North American carnivorans (Polly et al., 2017), the lengths and shapes of metapodials and phalanges have been found to be highly predictive of arboreality in carnivorans (Van Valkenburgh, 1987), as well as mammals more generally (e.g., Nations et al., 2019), and body shape diversity, as defined by relative measures of the axial skeleton, is consistent with evolution on an adaptive landscape defined by clade specific peaks, albeit peaks that are not obviously associated with ecology (Law, 2021). Further tests of this finding using an expanded ecomorphological dataset are needed to corroborate the lack of early-burst dynamics in locomotor traits for this clade.

While relative sizes and shapes of teeth intuitively relate to food acquisition and processing, the post-cranial skeleton is composed of many moving parts that must work together to facilitate locomotor performance. The post-cranial skeleton therefore tends to exhibit a high degree of inter-element covariance (Goswami et al., 2009; Young & Hallgrímsson, 2005), which may frustrate the production of discontinuous morphological variation that is maximally optimized for a given locomotor demand (Marshall, 2014; Niklas, 1997, 1999, 2004). Support recovered here for a multi-peak locomotor landscape with relatively low ruggedness, as indicated by a relatively large phylogenetic half-life and equilibrium variances, is consistent with this interpretation and suggests that ecomorphological variation in the carnivoran post-cranial skeleton is far less discontinuous

than that found in the mandibulodental system. Scaling of limb proportions in response to changes in body size can also affect functional indices, meaning that more diverse locomotor behaviors can be achieved for a given morphology at small body sizes (Jenkins et al., 1974; Janis & Martín-Serra, 2020; Weaver & Grossnickle, 2020; Wimberly et al., 2021), or that allometric patterns may dominate shape change independent of locomotor behavior at larger sizes (Martín-Serra et al., 2014), further clouding ecomorphological relationships in the post-cranial skeleton. Finally, while locomotor diversity in Carnivora is striking for a mammalian order, it does not span the full breadth of substrate use, locomotor specialization, or morphological diversity encompassed by sequentially higher-level groupings of mammals, such as Laurasiatheria, Boreoeutheria, or Placentalia, where patterns of shape variation associated with substrate use or behavior may be more discontinuous (Chen & Wilson, 2015; Janis & Martín-Serra, 2020; Weaver & Grossnickle, 2020). In other words, failure to detect early-burst like patterns at a given level of the phylogenetic hierarchy, such as in mammalian orders, does not preclude the possibility that a burst occurred at a higher level than the one sampled (Foote, 1996; Jablonski, 2017). The lack of support for partitioning of post-cranial variation among carnivoran clades may well be due to carnivorans themselves sitting atop a rugged peak on a broader mammalian adaptive landscape. While a more comprehensive analysis of carnivoran post-cranial morphological evolution is required to refute or confirm my findings they are silent with respect to the hypothesis that mammalian evolution more broadly is characterized by adaptive radiation along an axis of substrate use (Osborn, 1902; Van Valen, 1971), and higher-level tests of this hypothesis are urgently required.

THE UNPREDICTABLE ROLE OF BODY SIZE IN MACROEVOLUTION

Body mass has long been a focal trait for comparative biologists, partly due to its wide availability and ease of access in the literature, but also due to its supposed strong relationship with multiple aspects of life history and ecology (Bonner, 1965; Calder, 1984; LaBarbera, 1989; Peters, 1986). Macroevolutionary studies of diverse clades have yielded support for dynamics that are consistent (Slater et al., 2010; Derryberry et al., 2011; Pyron & Burbrink, 2012) and inconsistent (Harmon et al., 2010; Venditti et al., 2011) with adaptive radiation along an axis of body size variation, but few have explicitly related variation in size to variation in ecological role and, therefore, to macroevolutionary dynamics on the adaptive landscape. Indeed, some authors have used the apparently stochastic nature of body mass evolution to argue more generally that trait optima are too ephemeral over macroevolutionary timescales to be a useful paradigm at all in comparative research (Pagel et al., 2022). My results would initially seem to strengthen this conclusion by not only demonstrating that the

accumulation of body size disparity within and among carnivoran clades is consistent with a null Brownian motion model (figure 4c; see also Roycroft et al. 2020 for a spatial demonstration of this phenomenon using Australian rodent body mass), but also by showing that there are no pronounced peaks on the body size adaptive landscape. I stress that this result should not be taken to mean that body mass evolution is not adaptive in carnivorans, nor that selection on body mass may not be strong and directional over microevolutionary timescales (Hereford et al., 2004; Kingsolver et al., 2001; Kingsolver & Pfennig, 2004; Schluter, 1988); but see Rollinson & Rowe 2015). Rather, despite the importance of body mass for many aspects of organismal ecology, microevolutionary patterns need not scale to macroevolutionary levels (Jablonski, 1996), and adaptive peaks associated with body size variation are likely not stable at geographic (Diniz-Filho & Tôrres, 2002; Diniz-Filho et al., 2009; Roycroft et al., 2020) or temporal scales ranging from seasonal (Powell & King, 1997) to geologic (Finarelli, 2007; Law, 2019; Slater, 2015).

Still, it is striking that the apparently ephemeral nature of body mass optima contrasts strongly with the stable peaks associated with dietary resource use that have persisted for over 50 million years in this clade (Slater, 2015). This result should not be surprising, as the material properties of muscle, cuticle, and plant cell walls that influence tooth shape and size are unlikely to have undergone dramatic shifts over this period, even if the climatic and environmental factors or the composition and body size distribution of the prey base that influence carnivoran body mass have systematically varied (Slater, 2015; Van Valkenburgh, 2007). The decoupling of tempo and mode in mandibulodental and body size evolution recovered here (see also Grossnickle, 2020; Meloro & Raia, 2010; Slater, 2015; Slater and Friscia, 2019) suggests that these traits have played fundamentally different roles in facilitating ecological interactions over macroevolutionary timescales, leading to distinct signals in these comparative data. Instead of providing evidence against the utility of the adaptive landscape metaphor (Pagel et al., 2022), these results together suggest that body size is, in general, likely to be a poor substitute for ecomorphological traits when attempting to understand clade macroevolutionary dynamics (Jablonski, 1996; Slater, 2015; Grossnickle, 2020).

Conclusion

Adaptive radiation is a provocative term and has been used to describe a range of macroevolutionary scenarios (Givnish, 1997, 2015; Losos et al., 2010; Olson & Arroyo-Santos, 2009), from replicated ecomorph origins in isolated populations of a single species (Schluter, 1993, 1995) to rapid rates of speciation (Slowinski & Guyer, 1989) or phenotypic evolution (Harmon et al., 2010). Despite this diversity of perspectives, using the

original formulations of adaptive radiation (Osborn, 1902; Simpson, 1953) we are able to make clear predictions about the structure of ecomorphological variation across phylogeny and the topography of the underlying adaptive landscape on which this variation evolves (Arnold et al., 2001). Evaluating these hypotheses across trait complexes in a single clade can yield novel insights into whether adaptive radiations tend to occur simultaneously across trait complexes (Osborn, 1902), sequentially along distinct axes of resource use (Diamond, 1986; Streelman & Danley, 2003), or, as I have found here, whether some ecological axes are more accessible to diversifying clades than others. Importantly, while the phylogenetic comparative methods toolkit continues to expand, it is mature enough now that the limitations to addressing questions about the frequency and form of adaptive radiation lie not in the availability of methods but, rather, in the availability of suitable data. My results confirm that body size, while widely accessible and intrinsically interesting in its own right, is an axis of trait variation that evolution is able to exploit rapidly in response to ephemeral shifts in the topography of the adaptive landscape, and there is no guarantee that variation in size is related to niche dynamics that are important over macroevolutionary timescales (Uyeda et al., 2011). I suggest that the most fruitful inference of adaptive radiation dynamics will emerge from analyses of morphological traits that can be directly and explicitly related to the distinct ecological roles that organisms play in their environments. It is time for comparative biologists to move beyond body size and to employ a richer suite of ecomorphological data to more directly evaluate hypotheses about the nature of adaptive radiation.

AUTHOR CONTRIBUTIONS

GJS conceived the study, collected data, performed analyses, and wrote the manuscript.

ACKNOWLEDGMENTS

I thank Darrin Lunde (NMNH) and Adam Ferguson (FMNH) for providing access to specimens in their care. I am grateful to M. Zelditch, T. Stayton, and two anonymous reviewers for their constructive evaluations and to D. Jablonski, J. Nations, and A. Wisniewski for helpful comments and criticisms on an earlier version of this manuscript. I declare that I have no conflicts of interest.

DATA ARCHIVING

All data and scripts associated with this article are accessible through the Dryad Digital Data Repository at doi:10.5061/dryad.tdz08kq24.

LITERATURE CITED

Ackerly, D.D., Schwilk, D.W. & Webb, C.O. (2006) Niche evolution and adaptive radiation: Testing the order of trait divergence. *Ecology*, 87, S50–S61. URL [https://doi.org/10.1890/0012-9658\(2006\)87\[50:NEAART\]2.0.CO;2](https://doi.org/10.1890/0012-9658(2006)87[50:NEAART]2.0.CO;2).

- Aristide, L., Bastide, P., Dos Reis, S.F., Pires dos Santos, T.M., Lopes, R.T. and Perez, S.I. (2018) Multiple factors behind early diversification of skull morphology in the continental radiation of New World monkeys. *Evolution*, 72, 2697–2711.
- Arnold, S.J., Pfrender, M.E. & Jones, A.G. (2001) The adaptive landscape as a conceptual bridge between micro- and macroevolution. *Genetica*, 112, 9–32.
- Asahara, M., Saito, K., Kishida, T., Takahashi, K. & Bessho, K. (2016) Unique pattern of dietary adaptation in the dentition of Carnivora: its advantage and developmental origin. *Proceedings of the Royal Society B: Biological Sciences*, 283, 20160375.
- Astudillo-Clavijo, V., Arbour, J.H. & López-Fernández, H. (2015) Selection towards different adaptive optima drove the early diversification of locomotor phenotypes in the radiation of neotropical geophagine cichlids. *BMC Evolutionary Biology*, 15, 77. URL <https://doi.org/10.1186/s12862-015-0348-7>.
- Bastide, P., Ané, C., Robin, S. & Mariadassou, M. (2018) Inference of adaptive shifts for multivariate correlated traits. *Systematic Biology*, 67, 662–680. URL + <http://doi.org/10.1093/sysbio/syy005>.
- Beaulieu, J.M., Jhwueng, D.C., Boettiger, C. & O’Meara, B.C. (2012) Modeling stabilizing selection: Expanding the Ornstein-Uhlenbeck model of adaptive evolution. *Evolution*, 66, 2369–2383. URL <http://doi.org/10.1111/j.1558-5646.2012.01619.x>.
- Benson, R.B., Hunt, G., Carrano, M.T. & Campione, N. (2018) Cope’s rule and the adaptive landscape of dinosaur body size evolution. *Palaentology*, 61, 13–48.
- Berenbaum, M.R., Favret, C. & Schuler, M.A. (1996) On defining “key innovations” in an adaptive radiation: Cytochrome p450s and Papilionidae. *The American Naturalist*, 148, S139–S155.
- Blomberg, S.P., Garland, T. & Ives, A.R. (2003) Testing for phylogenetic signal in comparative data: Behavioral traits are more labile. *Evolution*, 57, 717–745.
- Bonner, J.T. (1965) *Size and Cycle: An Essay on the Structure of Biology*. Princeton University Press, Princeton NJ.
- Bouckaert, R., Heled, J., Kühnert, D., Vaughan, T., Wu, C.-H., Xie, D., Suchard, M.A., Rambaut, A. & Drummond, A.J. (2014) BEAST 2: a software platform for Bayesian evolutionary analysis. *PLoS Comput Biol*, 10, e1003537.
- Burbrink, F.T. & Pyron, R.A. (2010) How does ecological opportunity influence rates of speciation, extinction, and morphological diversification in New World ratsnakes (tribe Lampropeltini)? *Evolution*, 64, 934–943. URL <https://onlinelibrary.wiley.com/doi/abs/10.1111/j.1558-5646.2009.00888.x>.
- Burbrink, F.T., Ruane, S. & Pyron, R.A. (2012) When are adaptive radiations replicated in areas? Ecological opportunity and unexceptional diversification in West Indian dipsadine snakes (Colubridae: Alsophiini). *Journal of Biogeography*, 39, 465–475.
- Butler, M.A. & King, A.A. (2004) Phylogenetic comparative analysis: A modeling approach for adaptive evolution. *The American Naturalist*, 164, 683–695.
- Calder, W.A. (1984) *Size, Function and Life History*. Harvard University Press.
- Chen, M. & Wilson, G.P. (2015) A multivariate approach to infer locomotor modes in Mesozoic mammals. *Paleobiology*, 41, 280–312.
- Darroch, J.N. & Mosimann, J.E. (1985) Canonical and principal components of shape. *Biometrika*, 72, 241–252. URL <https://doi.org/10.1093/biomet/72.2.241>.
- Darwin, C. (1845) *Journal of Researches into the Natural History and Geology of the countries visited during the voyage of H.M.S. Beagle round the world, under the Command of Capt. Fitz Roy, R. N.* John Murray, London.
- Davis, D.D. (1964) The giant panda: a morphological study of evolutionary mechanisms. *Fieldiana (Zoology Memoirs)*, 3, 1–339.
- Derryberry, E.P., Claramunt, S., Derryberry, G., Chesser, R.T., Cracraft, J., Aleixo, A., Pérez-Emán, J., Remsen, J.V. Jr. & Brumfield, R.T. (2011) Lineage diversification and morphological evolution in a large-scale continental radiation: The neotropical ovenbirds and woodcreepers (Aves: Furnariidae). *Evolution*, 65.
- Diamond, J. (1986) Evolution of ecological segregation in the New Guinea montane avifauna. Pp. 98–125, in J. Diamond and T. Case, eds. *Community Ecology*. Harper and Row.
- Diniz-Filho, J.A.F., Rodríguez, M.Á., Bini, L.M., Olalla-Tarraga, M.Á., Cardillo, M., Nabout, J.C., Hortal, J. & Hawkins, B.A. (2009) Climate history, human impacts and global body size of Carnivora (Mammalia: Eutheria) at multiple evolutionary scales. *Journal of Biogeography*, 36, 2222–2236.
- Diniz-Filho, J.A.F. & Tôrres, N.M. (2002) Phylogenetic comparative methods and the geographic range size–body size relationship in New World terrestrial Carnivora. *Evolutionary Ecology*, 16, 351–367.
- Doebeli, M. & Ispolatov, I. (2017) Diversity and coevolutionary dynamics in high-dimensional phenotype spaces. *The American Naturalist*, 189, 105–120. URL <https://doi.org/10.1086/689891>. PMID: 28107053.
- Drummond, A.J., Ho, S.Y.W., Phillips, M.J. & Rambaut, A. (2006) Relaxed phylogenetics and dating with confidence. *PLoS biology*, 4, e88.
- Duchen, P., Leuenberger, C., Szilágyi, S.M., Harmon, L., Eastman, J., Schweizer, M. & Wegmann, D. (2017) Inference of evolutionary jumps in large phylogenies using Lévy processes. *Systematic biology*, 66, 950–963.
- Eastman, J.M., Alfaro, M.E., Joyce, P., Hipp, A.L. & Harmon, L.J. (2011) A novel comparative method for identifying shifts in the rate of character evolution on trees. *Evolution*, 65, 3578–3589.
- Eisenberg, J.F. (1981) *The Mammalian Radiations: an Analysis of Trends in Evolution, Adaptation, and Behaviour*. Chicago University Press, Chicago.
- Erwin, D.H. (1992) A preliminary classification of evolutionary radiations. *Historical Biology*, 6, 133–147.
- Erwin, D.H. (2017) The topology of evolutionary novelty and innovation in macroevolution. *Philosophical Transactions of the Royal Society B: Biological Sciences*, 372, 20160422.
- Erwin, D.H. (2021) A conceptual framework of evolutionary novelty and innovation. *Biological Reviews*, 96, 1–15.
- Felsenstein, J. (1985) Phylogenies and the comparative method. *The American Naturalist*, 125, 1–15.
- Finarelli, J.A. (2007) Mechanisms behind active trends in body size evolution of the Canidae (Carnivora: Mammalia). *The American Naturalist*, 170, 876–885.
- Foote, M. (1991) Morphological and taxonomic diversity in clade’s history: the blastoid record and stochastic simulations. *Contributions from the Museum of Paleontology, University of Michigan*, 23, 101–140.
- Foote, M. (1993) Discordance and concordance between morphological and taxonomic diversity. *Paleobiology*, 19, 185–204.
- Foote, M. (1996) Models of morphological diversification. Pp. 62–88, in J.D., D. Erwin, and J. Lipps, eds. *Evolutionary Paleobiology*. University of Chicago Press.
- Freckleton, R.P. & Harvey, P.H. (2006) Detecting non-Brownian trait evolution in adaptive radiations. *PLoS Biology*, 4, e373.
- Freckleton, R.P. & Jetz, W. (2009) Space versus phylogeny: disentangling phylogenetic and spatial signals in comparative data. *Proceedings of the Royal Society B: Biological Sciences*, 276, 21–30. URL <http://rspb.royalsocietypublishing.org/content/276/1654/21.abstract>.

- Friscia, A.R., Van Valkenburgh, B. & Biknevicius, A.R. (2007) An ecomorphological analysis of extant small carnivorans. *Journal of Zoology*, 272, 82–100. URL <http://doi.org/10.1111/j.1469-7998.2006.00246.x>.
- Frontier, S. (1976) Étude de la décroissance des valeurs propres dans une analyse en composantes principales: Comparaison avec le modèle du bâton brisé. *Journal of Experimental Marine Biology and Ecology*, 25, 67–75.
- Fulwood, E.L., Shan, S., Winchester, J.M., Kirveslahti, H., Ravier, R., Kovalsky, S., Daubechies, I. & Boyer, D.M. (2021) Insights from macroevolutionary modelling and ancestral state reconstruction into the radiation and historical dietary ecology of Lemuriformes (Primates, Mammalia). *BMC Ecology and Evolution*, 21, 1–13.
- Gavrilets, S. & Losos, J.B. (2009) Adaptive radiation: Contrasting theory with data. *Science*, 323, 732–737. URL <http://science.sciencemag.org/content/323/5915/732>.
- Gavrilets, S. & Vose, A. (2005) Dynamic patterns of adaptive radiation. *Proceedings of the National Academy of Sciences of the United States of America*, 102, 18040–18045.
- Gavryushkina, A., Heath, T.A., Ksepka, D.T., Stadler, T., Welch, D. & Drummond, A.J. (2016) Bayesian total-evidence dating reveals the recent crown radiation of penguins. *Systematic Biology* URL <http://sysbio.oxfordjournals.org/content/early/2016/07/27/sysbio.syw060.abstract>.
- Gavryushkina, A., Welch, D., Stadler, T. & Drummond, A.J. (2014) Bayesian inference of sampled ancestor trees for epidemiology and fossil calibration. *PLoS Comput Biol*, 10, e1003919.
- Givnish, T.J. (1997) Adaptive radiation and molecular systematics: Issues and approaches. Pp. 1–54, in T. Givnish and K. Sytsma, eds. *Molecular Evolution and Adaptive Radiation*. Cambridge University Press, Cambridge UK.
- Givnish, T.J. (2015) Adaptive radiation versus ‘radiation’ and ‘explosive diversification’: why conceptual distinctions are fundamental to understanding evolution. *New Phytologist*, 207, 297–303. URL <http://doi.org/10.1111/nph.13482>. 2014-18178.
- Glor, R.E. (2010) Phylogenetic insights on adaptive radiation. *Annual Review of Ecology, Evolution, and Systematics*, 41, 251–270.
- Godoy, P.L., Benson, R.B., Bronzati, M. & Butler, R.J. (2019) The multi-peak adaptive landscape of crocodylomorph body size evolution. *BMC evolutionary biology*, 19, 1–29.
- Goswami, A., Weisbecker, V. & Sánchez-Villagra, M. (2009) Developmental modularity and the marsupial–placental dichotomy. *Journal of Experimental Zoology Part B: Molecular and Developmental Evolution*, 312, 186–195.
- Gould, F.D. (2014) To 3D or not to 3D, that is the question: do 3D surface analyses improve the ecomorphological power of the distal femur in placental mammals? *PloS one*, 9, e91719.
- Gould, S.J., Raup, D.M., Sepkoski, J.J., Schopf, T.J.M. & Simberloff, D.S. (1977) The shape of evolution: a comparison of real and random clades. *Paleobiology*, 3, 23–40.
- Grant, P.R. (1981) Speciation and the Adaptive Radiation of Darwin’s Finches: The complex diversity of Darwin’s finches may provide a key to the mystery of how intraspecific variation is transformed into interspecific variation. *American Scientist*, 69, 653–663. URL <https://www.jstor.org/stable/27850717>.
- Grant, V. (1963) *The Origin of Adaptations*. Columbia University Press, New York & London.
- Grossnickle, D.M. (2020) Feeding ecology has a stronger evolutionary influence on functional morphology than on body mass in mammals. *Evolution*, 74, 610–628.
- Hansen, T.F. (1997) Stabilizing selection and the comparative analysis of adaptation. *Evolution*, 51, 1341–1351.
- Hansen, T.F. & Martins, E.P. (1996) Translating between microevolutionary process and macroevolutionary patterns: the correlation structure of interspecific data. *Evolution*, 50, 1404–1417.
- Harmon, L.J., Losos, J.B., Jonathan Davies, T., Gillespie, R.G., Gittleman, J.L., Bryan Jennings, W., Kozak, K.H., McPeck, M.A., Moreno-Roark, F., Near, T.J., Purvis, A., Ricklefs, R.E., Schluter, D., Schulte II, J.A., Seehausen, O., Sidlauskas, B.L., Torres-Carvajal, O., Weir, J.T. & Mooers, A.Ø. (2010) Early bursts of body size and shape evolution are rare in comparative data. *Evolution*, 64, 2385–2396.
- Harmon, L.J., Pennell, M.W., Hena-Diaz, L.F., Rolland, J., Siple, B.N. & Uyeda, J.C. (2021) Causes and consequences of apparent timescaling across all estimated evolutionary rates. *Annual Review of Ecology, Evolution, and Systematics*, 52.
- Harmon, L.J., Schulte, J.A., Larson, A. & Losos, J.B. (2003) Tempo and mode of evolutionary radiation in iguanian lizards. *Science*, 301, 961–964.
- Heath, T.A., Huelsenbeck, J.P. & Stadler, T. (2014) The fossilized birth–death process for coherent calibration of divergence-time estimates. *Proceedings of the National Academy of Sciences*, 111, E2957–E2966.
- Hereford, J., Hansen, T.F. & Houle, D. (2004) Comparing strengths of directional selection: how strong is strong? *Evolution*, 58, 2133–2143.
- Ingram, T. (2011) Speciation along a depth gradient in a marine adaptive radiation. *Proceedings of the Royal Society B: Biological Sciences*, 278, 613–618. URL <https://royalsocietypublishing.org/doi/abs/10.1098/rspb.2010.1127>.
- Jablonski, D. (1996) Body size and macroevolution. Pp. 256–289, in D. Jablonski, D. Erwin, and J. Lipps, eds. *Evolutionary Paleobiology*. University of Chicago Press.
- Jablonski, D. (2017) Approaches to macroevolution: 2. sorting of variation, some overarching issues, and general conclusions. *Evolutionary Biology*, 44, 451–475.
- Jackson, D.A. (1993) Stopping rules in principal components analysis: a comparison of heuristical and statistical approaches. *Ecology*, 74, 2204–2214.
- Janis, C.M. & Martín-Serra, A. (2020) Postcranial elements of small mammals as indicators of locomotion and habitat. *PeerJ*, 8, e9634.
- Jenkins, F.A. et al. (1974) *Primate locomotion*. Academic Press.
- Kavanagh, K.D., Evans, A.R. & Jernvall, J. (2007) Predicting evolutionary patterns of mammalian teeth from development. *Nature*, 449, 427–432.
- Khabbazian, M., Kriebel, R., Rohe, K. & Ané, C. (2016) Fast and accurate detection of evolutionary shifts in Ornstein–Uhlenbeck models. *Methods in Ecology and Evolution*, 7, 811–824.
- Kingsolver, J.G., Hoekstra, H.E., Hoekstra, J.M., Berrigan, D., Vignieri, S.N., Hill, C., Hoang, A., Gibert, P. & Beerli, P. (2001) The strength of phenotypic selection in natural populations. *The American Naturalist*, 157, 245–261.
- Kingsolver, J.G. & Pfennig, D.W. (2004) Individual-level selection as a cause of Cope’s rule of phyletic size increase. *Evolution*, 58, 1608–1612.
- LaBarbera, M. (1989) Analyzing body size as a factor in ecology and evolution. *Annual Review of Ecology and Systematics*, 20, 97–117.
- Lack, D. (1947) *Darwin’s finches*. Cambridge University Press.
- Lamichhaney, S., Berglund, J., Almén, M.S., Maqbool, K., Grabherr, M., Martínez-Barrio, A., Promerová, M., Rubín, C.-J., Wang, C., Zamani, N., Grant, B.R., Grant, P.R., Webster, M.T. & Andersson, L. (2015) Evolution of Darwin’s finches and their beaks revealed by genome sequencing. *Nature*, 518, 371–375. URL <https://doi.org/10.1038/nature14181>.
- Lande, R. (1976) Natural selection and random genetic drift in phenotypic evolution. *Evolution*, 30, 314–334.
- Landis, M.J. & Schraiber, J.G. (2017) Pulsed evolution shaped modern vertebrate body sizes. *Proceedings of the National Academy of Sciences*, 114, 13224–13229.

- Landis, M.J., Schraiber, J.G. & Liang, M. (2013) Phylogenetic analysis using Lévy processes: finding jumps in the evolution of continuous traits. *Systematic biology*, 62, 193–204.
- Law, C.J. (2019) Evolutionary shifts in extant mustelid (Mustelidae: Carnivora) cranial shape, body size and body shape coincide with the Mid-Miocene climate transition. *Biology letters*, 15, 20190155.
- Law, C.J. (2021) Ecological drivers of carnivoran body shape evolution. *The American Naturalist*, 198, 406–420. URL <https://doi.org/10.1086/715588>. PMID: 34403311.
- Law, C.J., Slater, G.J. & Mehta, R.S. (2019) Shared extremes by ectotherms and endotherms: body elongation in mustelids is associated with small size and reduced limbs. *Evolution*, 73, 735–749.
- López-Fernández, H., Arbour, J.H., Winemiller, K.O. & Honeycutt, R.L. (2013) Testing for ancient adaptive radiations in Neotropical cichlid fishes. *Evolution*, 67, 1321–1337.
- Losos, J.B., Mahler, D.L. et al. (2010) Adaptive radiation: the interaction of ecological opportunity, adaptation, and speciation. *Evolution since Darwin: the first*, 150, 381–420.
- Mahler, D.L., Ingram, T., Revell, L.J. & Losos, J.B. (2013) Exceptional convergence on the macroevolutionary landscape in island lizard radiations. *Science*, 341, 292–295. URL <http://www.sciencemag.org/content/341/6143/292>.
- Mahler, D.L., Revell, L.J., Glor, R.E. & Losos, J.B. (2010) Ecological opportunity and the rate of morphological evolution in the diversification of Greater Antillean anoles. *Evolution: International Journal of Organic Evolution*, 64, 2731–2745.
- Marshall, C.R. (2014) The evolution of morphogenetic fitness landscapes: conceptualising the interplay between the developmental and ecological drivers of morphological innovation. *Australian Journal of Zoology*, 62, 3–17. URL <http://www.bioone.org/doi/abs/10.1071/ZO13052>.
- Martin, C.H. & Wainwright, P.C. (2013) Multiple fitness peaks on the adaptive landscape drive adaptive radiation in the wild. *Science*, 339, 208–211.
- Martín-Serra, A., Figueirido, B. & Palmqvist, P. (2014) A three-dimensional analysis of the morphological evolution and locomotor behaviour of the carnivoran hind limb. *BMC Evolutionary Biology*, 14, 129. URL <https://doi.org/10.1186/1471-2148-14-129>.
- Mayr, E. (1942) *Systematics and the Origin of Species, from the Viewpoint of a Zoologist*. Columbia University Press, New York.
- McGee, M.D., Borstein, S.R., Meier, J.I., Marques, D.A., Mwaiko, S., Taabu, A., Kiske, M.A., O'Meara, B., Bruggmann, R., Excoffier, L. et al. (2020) The ecological and genomic basis of explosive adaptive radiation. *Nature*, 586, 75–79.
- Samuels, J. & Van Valkenburgh, B. (2009) Craniodental indicators of prey size preference in the Felidae. *Biological Journal of the Linnean Society*, 96, 784–799. URL <http://doi.org/10.1111/j.1095-8312.2008.01169.x>.
- Meloro, C. & Raia, P. (2010) Cats and dogs down the tree: The tempo and mode of evolution in the lower carnassial of fossil and living Carnivora. *Evolutionary Biology*, 37, 177–186. URL <http://doi.org/10.1007/s11692-010-9094-3>.
- Mongiardino Koch, N. (2021) Exploring adaptive landscapes across deep time: A case study using echinoid body size. *Evolution*.
- Mosimann, J.E. (1970) Size allometry: size and shape variables with characterizations of the lognormal and generalized gamma distributions. *Journal of the American Statistical Association*, 65, 930–945.
- Nations, J.A., Heaney, L.R., Demos, T.C., Achmadi, A.S., Rowe, K.C. & Esselstyn, J.A. (2019) A simple skeletal measurement effectively predicts climbing behaviour in a diverse clade of small mammals. *Biological Journal of the Linnean Society*. URL <https://doi.org/10.1093/biolinnean/blz085>.
- Niklas, K.J. (1997) Effects of hypothetical developmental barriers and abrupt environmental changes on adaptive walks in a computer-generated domain for early vascular land plants. *Paleobiology*, 23, 63–76.
- Niklas, K.J. (1999) Evolutionary walks through a land plant morphospace. *Journal of Experimental Botany*, 50, 39–52. URL <http://doi.org/10.1093/jxb/50.330.39>.
- Niklas, K.J. (2004) Computer models of early land plant evolution. *Annual Review of Earth and Planetary Sciences*, 32, 47–66. URL <https://doi.org/10.1146/annurev.earth.32.092203.122440>.
- Olson, M.E. & Arroyo-Santos, A. (2009) Thinking in continua: beyond the “adaptive radiation” metaphor. *BioEssays*, 31, 1337–1346.
- Osborn, H.F. (1899) The origin of mammals. *American Journal of Science*, 7, 92–96.
- Osborn, H.F. (1902) The law of adaptive radiation. *The American Naturalist*, 36, 353–363.
- Pagel, M., O'Donovan, C. & Meade, A. (2022) General statistical model shows that macroevolutionary patterns and processes are consistent with Darwinian gradualism. *Nature communications*, 13, 1–12.
- Pennell, M.W., Eastman, J.M., Slater, G.J., Brown, J.W., Uyeda, J.C., FitzJohn, R.G., Alfaro, M.E. & Harmon, L.J. (2014) *geiger* v2.0: an expanded suite of methods for fitting macroevolutionary models to phylogenetic trees. *Bioinformatics*, 30, 2216–2218. URL <http://bioinformatics.oxfordjournals.org/content/30/15/2216.abstract>.
- Peters, R.H. (1986) *The Ecological Implications of Body Size*. Cambridge University Press, Cambridge UK.
- Polly, P.D. (2007) Development with a bite. *Nature*, 449, 413–414.
- Polly, P.D. (2010) Tiptoeing through the trophics: geographic variation in carnivoran locomotor ecomorphology in relation to environment. Pp. 374–401, in A. Goswami and A. R. Friscia, eds. *Carnivoran evolution: new views on phylogeny, form, and function*. Cambridge University Press Cambridge.
- Polly, P.D., Fuentes-Gonzalez, J., Lawing, A.M., Bormet, A.K. & Dundas, R.G. (2017) Clade sorting has a greater effect than local adaptation on ecometric patterns in Carnivora. *Evolutionary Ecology Research*, 18, 61–95.
- Powell, R.A. & King, C.M. (1997) Variation in body size, sexual dimorphism and age-specific survival in stoats, *Mustela erminea* (Mammalia: Carnivora), with fluctuating food supplies. *Biological Journal of the Linnean Society*, 62, 165–194.
- Price, S.A. & Hopkins, S.S. (2015) The macroevolutionary relationship between diet and body mass across mammals. *Biological Journal of the Linnean Society*, 115, 173–184.
- Pyron, R.A. & Burbrink, F.T. (2012) Trait-dependent diversification and the impact of palaeontological data on evolutionary hypothesis testing in New World ratsnakes (tribe Lampropeltini) *Journal of Evolutionary Biology*, 25, 497–508. URL <http://doi.org/10.1111/j.1420-9101.2011.02440.x>.
- Rabosky, D.L. (2014) Automatic detection of key innovations, rate shifts, and diversity-dependence on phylogenetic trees. *PLOS ONE*, 9, 1–15. URL <https://doi.org/10.1371/journal.pone.0089543>.
- Revell, L.J., Harmon, L.J. & Glor, R.E. (2005) Underparameterized model of sequence evolution leads to bias in the estimation of diversification rates from molecular phylogenies. *Systematic Biology*, 54, 973–983.
- Richman, A.D. & Price, T. (1992) Evolution of ecological differences in the Old World leaf warblers. *Nature*, 355, 817 EP. URL <http://doi.org/10.1038/355817a0>.
- Rollinson, N. & Rowe, L. (2015) Persistent directional selection on body size and a resolution to the paradox of stasis. *Evolution*, 69, 2441–2451.
- Roycroft, E.J., Nations, J.A. & Rowe, K.C. (2020) Environment predicts repeated body size shifts in a recent radiation of Australian mammals. *Evolution*, 74, 671–680.

- Sacco, T. & Van Valkenburgh, B. (2004) Ecomorphological indicators of feeding behaviour in the bears (Carnivora: Ursidae). *Journal of Zoology*, 263, 41–54. URL <http://doi.org/10.1017/S0952836904004856>.
- Sallan, L.C. & Friedman, M. (2012) Heads or tails: staged diversification in vertebrate evolutionary radiations. *Proceedings of the Royal Society B: Biological Sciences*, 279, 2025–2032. URL <https://royalsocietypublishing.org/doi/abs/10.1098/rspb.2011.2454>.
- Samuels, J.X., Meachen, J.A. & Sakai, S.A. (2013) Postcranial morphology and the locomotor habits of living and extinct carnivorans. *Journal of morphology*, 274, 121–146.
- Schluter, D. (1988) Estimating the form of natural selection on a quantitative trait. *Evolution*, 42, 849–861.
- Schluter, D. (1993) Adaptive radiation in sticklebacks: size, shape, and habitat use efficiency. *Ecology*, 74, 699–709.
- Schluter, D. (1995) Adaptive radiation in sticklebacks: trade-offs in feeding performance and growth. *Ecology*, 76, 82–90.
- Schluter, D. (2000) *The Ecology of Adaptive Radiation*. Oxford University Press.
- Schluter, D. & Grant, P.R. (1984) Ecological correlates of morphological evolution in a Darwin's finch, *Geospiza difficilis*. *Evolution*, 38, 856–869. URL <http://www.jstor.org/stable/2408396>.
- Silvertown, J., Dodd, M., Gowing, D., Lawson, C. & McConway, K. (2006a) Phylogeny and the hierarchical organization of plant diversity. *Ecology*, 87, S39–S49. URL [https://doi.org/10.1890/0012-9658\(2006\)87\[39:PATHOO\]2.0.CO;2](https://doi.org/10.1890/0012-9658(2006)87[39:PATHOO]2.0.CO;2).
- Silvertown, J., McConway, K., Gowing, D., Dodd, M., Fay, M.F., Joseph, J.A. & Dolphin, K. (2006b) Absence of phylogenetic signal in the niche structure of meadow plant communities. *Proceedings of the Royal Society of London B: Biological Sciences*, 273, 39–44. URL <http://rspb.royalsocietypublishing.org/content/273/1582/39>.
- Simpson, G.G. (1944) *Tempo and Mode in Evolution*. Columbia University Press.
- Simpson, G.G. (1953) *Major Features of Evolution*. Columbia University Press.
- Slater, G.J. (2015) Iterative adaptive radiations of fossil canids show no evidence for diversity-dependent trait evolution. *Proceedings of the National Academy of Sciences in press*.
- Slater, G.J. & Friscia, A.R. (2019) Hierarchy in adaptive radiation: A case study using the Carnivora (Mammalia). *Evolution*, 73, 524–539. URL <https://doi.org/10.1111/evo.13689>.
- Slater, G.J., Harmon, L.J. & Alfaro, M.E. (2012) Integrating fossils with molecular phylogenies improves inference of trait evolution. *Evolution*, 66, 3931–3944. URL <http://doi.org/10.1111/j.1558-5646.2012.01723.x>.
- Slater, G.J. & Pennell, M.W. (2014) Robust regression and posterior predictive simulation increase power to detect early bursts of trait evolution. *Systematic Biology*, 63, 293–308.
- Slater, G.J., Price, S.A., Santini, F. & Alfaro, M.E. (2010) Diversity versus disparity and the radiation of modern cetaceans. *Proceedings of the Royal Society B-Biological Sciences*, 277, 3097–3104.
- Slowinski, J.B. & Guyer, C. (1989) Testing null models in questions of evolutionary success. *Systematic Zoology*, 38, 189–191.
- Solé, F., Smith, T., De Bast, E., Codrea, V. & Gheerbrant, E. (2016) New Carnivoraforms from the latest Paleocene of Europe and their bearing on the origin and radiation of Carnivoraformes (Carnivoramorph, Mammalia). *Journal of Vertebrate Paleontology*, 36, e1082480.
- Stanchak, K.E., Arbour, J.H. & Santana, S.E. (2019) Anatomical diversification of a skeletal novelty in bat feet. *Evolution*, 73, 1591–1603. URL <https://onlinelibrary.wiley.com/doi/abs/10.1111/evo.13786>.
- Streelman, J.T. & Danley, P.D. (2003) The stages of vertebrate evolutionary radiation. *Trends in Ecology and Evolution*, 18, 126–131. URL <http://www.sciencedirect.com/science/article/pii/S0169534702000368>.
- Uyeda, J.C., Hansen, T.F., Arnold, S.J. & Pienaar, J. (2011) The million-year wait for macroevolutionary bursts. *Proceedings of the National Academy of Sciences*, 108, 15908–15913.
- Valentine, J.W. (1969) Patterns of taxonomic and ecological structure of the shelf benthos during Phanerozoic time. *Palaentology*, 12, 684–709.
- Valentine, J.W. (1980) Determinants of diversity in higher taxonomic categories. *Paleobiology*, 6, 444–450.
- Van Valen, L. (1971) Adaptive zones and the orders of mammals. *Evolution*, 25, 420–428. URL <https://doi.org/10.1111/j.1558-5646.1971.tb01898.x>.
- Van Valkenburgh, B. (1987) Skeletal indicators of locomotor behavior in living and extinct carnivores. *Journal of Vertebrate Paleontology*, 7, 162–182.
- Van Valkenburgh, B. (1988) Trophic diversity in past and present guilds of large predatory mammals. *Paleobiology*, 14, 155–173. URL <http://www.jstor.org/stable/2400780>.
- Van Valkenburgh, B. (1991) Iterative evolution of hypercarnivory in canids (Mammalia: Carnivora): Evolutionary interactions among sympatric predators. *Paleobiology*, 17, 340–362. URL <http://www.jstor.org/stable/2400749>.
- Van Valkenburgh, B. (1996) Feeding behavior in free-ranging, large African carnivores. *Journal of Mammalogy*, 77, 240–254. URL <http://www.jstor.org/stable/1382725>.
- Van Valkenburgh, B. (1999) Major patterns in the history of carnivorous mammals. *Annual Review of Earth and Planetary Sciences*, 27, 463–493.
- Van Valkenburgh, B. (2007) Déjàvu: the evolution of feeding morphologies in the Carnivora. *Integrative and Comparative Biology*, 47, 147–163. URL <http://icb.oxfordjournals.org/content/47/1/147>.
- Venables, W.N. & Ripley, B. (2002) *Modern applied statistics with S*. Springer, New York.
- Venditti, C., Meade, A. & Pagel, M. (2011) Multiple routes to mammalian diversity. *Nature*, 479, 393–396.
- Vizueta, J., Macías-Hernández, N., Arnedo, M.A., Rozas, J. & Sánchez-Gracia, A. (2019) Chance and predictability in evolution: the genomic basis of convergent dietary specializations in an adaptive radiation. *Molecular Ecology*, 28, 4028–4045.
- Walker, T.D. & Valentine, J.W. (1984) Equilibrium models of evolutionary species diversity and the number of empty niches. *The American Naturalist*, 124, 887–899. URL <https://doi.org/10.1086/284322>.
- Weaver, L.N. & Grossnickle, D.M. (2020) Functional diversity of small-mammal postcrania is linked to both substrate preference and body size. *Current zoology*, 66, 539–553.
- Wesley-Hunt, G.D. (2005) The morphological diversification of carnivores in North America. *Paleobiology*, 31, 35–55.
- Wimberly, A.N., Slater, G.J. & Granatosky, M.C. (2021) Evolutionary history of quadrupedal walking gaits shows mammalian release from locomotor constraint. *Proceedings of the Royal Society B*, 288, 20210937.
- Wright, S. (1932) The roles of mutation, inbreeding, crossbreeding, and selection in evolution. *Proceedings of the Sixth International Congress on Genetics*, 1, 356–366.
- Young, N.M. & Hallgrímsson, B. (2005) Serial homology and the evolution of mammalian limb covariation structure. *Evolution*, 59, 2691–2704.

Associate Editor: T. Stayton
Handling Editor: M. L. Zelditch

Supporting Information

Additional supporting information may be found online in the Supporting Information section at the end of the article.

Table A1: Scaling matrix for the first two linear discriminant functions.

Table A2: Leave-one-out cross-validation of carnivoran locomotor classification.

Data S1

Table C1: PCA loadings for the first 2 PCs from analysis of craniodental traits.

Table C2: PCA loadings for the first 3 PCs from analysis of postcranial traits.

Data S1