

Acta Crystallographica Section E

## Structure Reports

Online

ISSN 1600-5368

# 4-[(3-Chloro-2-methylphenyl)iminomethyl]phenol

 B. C. Manjunath,<sup>a</sup> M. M. M Abdoh,<sup>b</sup> L. Mallesha,<sup>c</sup>  
 K. N. Mohana<sup>d</sup> and N. K. Lokanath<sup>a\*</sup>

<sup>a</sup>Department of Studies in Physics, Manasagangotri, University of Mysore, Mysore 570 006, India, <sup>b</sup>Department of Physics, Faculty of Science, An Najah National University, Nabtus West Bank, Palestinian Territories, <sup>c</sup>PG Department of Studies in Chemistry, JSS College of Arts Commerce and Science, Ooty Road, Mysore 570 025, India, and <sup>d</sup>Department of Studies in Chemistry, University of Mysore, Manasagangotri, Mysore 570 006, India

Correspondence e-mail: lokanath@physics.uni-mysore.ac.in

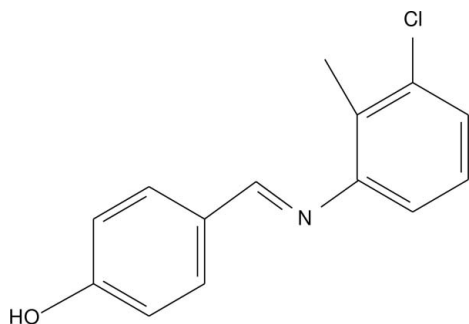
Received 5 September 2012; accepted 16 October 2012

 Key indicators: single-crystal X-ray study;  $T = 103$  K; mean  $\sigma(\text{C}-\text{C}) = 0.003$  Å;  $R$  factor = 0.047;  $wR$  factor = 0.123; data-to-parameter ratio = 13.2.

In the title compound,  $\text{C}_{14}\text{H}_{12}\text{ClNO}$ , the dihedral angle between the aromatic rings is  $39.84(7)^\circ$ . In the crystal, molecules are connected by  $\text{O}-\text{H}\cdots\text{N}$  hydrogen bonds into chains parallel to  $[001]$ . In addition, a  $\text{C}-\text{H}\cdots\pi$  contact occurs.

## Related literature

For the bioactivity of the title compound, see: Corke *et al.* (1979); Gorrard & Manson (1989). For related structures, see: Jothi *et al.* (2012); Yaeghoobi *et al.* (2009).



## Experimental

### Crystal data

$\text{C}_{14}\text{H}_{12}\text{ClNO}$	$V = 1175.1(2) \text{ \AA}^3$
$M_r = 245.70$	$Z = 4$
Orthorhombic, $P2_12_12_1$	Mo $K\alpha$ radiation
$a = 7.5271(9) \text{ \AA}$	$\mu = 0.31 \text{ mm}^{-1}$
$b = 12.4095(15) \text{ \AA}$	$T = 103 \text{ K}$
$c = 12.5800(14) \text{ \AA}$	$0.26 \times 0.20 \times 0.18 \text{ mm}$

### Data collection

Oxford Diffraction Xcalibur Eos diffractometer	2042 independent reflections
6050 measured reflections	1856 reflections with $I > 2\sigma(I)$
	$R_{\text{int}} = 0.037$

### Refinement

$R[F^2 > 2\sigma(F^2)] = 0.047$	155 parameters
$wR(F^2) = 0.123$	H-atom parameters constrained
$S = 1.07$	$\Delta\rho_{\text{max}} = 0.71 \text{ e \AA}^{-3}$
2042 reflections	$\Delta\rho_{\text{min}} = -0.46 \text{ e \AA}^{-3}$

**Table 1**

Hydrogen-bond geometry (Å, °).

Cg is the centroid of the C11–C16 ring.

$D-H\cdots A$	$D-H$	$H\cdots A$	$D\cdots A$	$D-H\cdots A$
$\text{O2}-\text{H2}\cdots\text{N3}^i$	0.84	2.05	2.854 (3)	160
$\text{C17}-\text{H17C}\cdots\text{Cg}^{ii}$	0.98	2.73	3.649 (2)	157

 Symmetry codes: (i)  $-x - \frac{1}{2}, -y, z + \frac{1}{2}$ ; (ii)  $-x + \frac{1}{2}, -y, z - \frac{1}{2}$ .

Data collection: *CrysAlis PRO* (Oxford Diffraction, 2009); cell refinement: *CrysAlis PRO*; data reduction: *CrysAlis PRO*; program(s) used to solve structure: *SHELXS97* (Sheldrick, 2008); program(s) used to refine structure: *SHELXL97* (Sheldrick, 2008); molecular graphics: *Mercury* (Macrae *et al.*, 2006); software used to prepare material for publication: *publCIF* (Westrip, 2010).

Supplementary data and figures for this paper are available from the IUCr electronic archives (Reference: KJ2211).

## References

- Corke, T. C., Bunce, N. J., Beamont, A. L. & Merrick, R. L. (1979). *J. Agric. Food Chem.* **27**, 644–646.
- Gorrard, J. W. & Manson, D. (1989). *Xenobiotica*, **16**, 933–955.
- Jothi, L., Vasuki, G., Babu, R. R. & Ramamurthi, K. (2012). *Acta Cryst.* **E68**, o772.
- Macrae, C. F., Edgington, P. R., McCabe, P., Pidcock, E., Shields, G. P., Taylor, R., Towler, M. & van de Streek, J. (2006). *J. Appl. Cryst.* **39**, 453–457.
- Oxford Diffraction (2009). *CrysAlis PRO*. Oxford Diffraction Ltd, Yarnton, England.
- Sheldrick, G. M. (2008). *Acta Cryst.* **A64**, 112–122.
- Westrip, S. P. (2010). *J. Appl. Cryst.* **43**, 920–925.
- Yaeghoobi, M., Rahman, N. A. & Ng, S. W. (2009). *Acta Cryst.* **E65**, o1070.

## supplementary materials

*Acta Cryst.* (2012). E68, o3191 [doi:10.1107/S1600536812043140]

**4-[(3-Chloro-2-methylphenyl)iminomethyl]phenol**

**B. C. Manjunath, M. M. M Abdoh, L. Mallesha, K. N. Mohana and N. K. Lokanath**

**Comment**

The investigation of microbial degradation by hazardous compounds such as anilines containing a methyl and a chloro-substituent is of interest because of their lipophilic character and affinity to interact with DNA (Gorrad & Manson, 1989).

The *ORTEP* drawing of the title molecule is shown in Fig. 1. The 4-hydroxybenzylidene system is nearly planar and its geometry is similar to 4-chloro-2-[(*E*)-2-(4-methoxyphenyl)-ethyliminomethyl]phenol (Yaeghoobi *et al.*, 2009). The dihedral angle between the methylphenol and chloromethylphenylimino ring systems is 39.84 (7)°.

The molecules are connected by O—H···N interactions into chains along the [0 0 1] direction (Fig. 2). There is a weak contact of the type C—H··· $\pi$  [ $1/2-x, -y, -1/2+z$ ] with a C···Cg distance of 3.649 (2) Å between the methyl group of the chloromethyl ring and the phenol ring.

**Experimental**

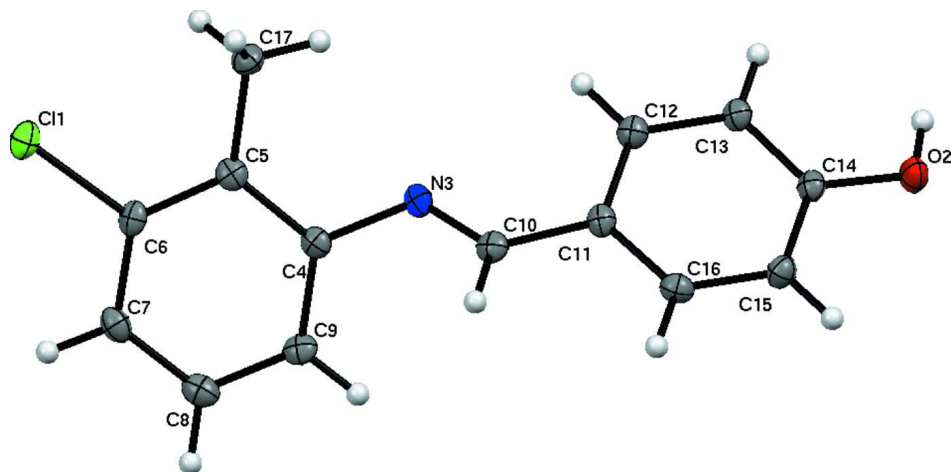
Equimolar concentrations of 4-hydroxybenzaldehyde (0.003 mol) and 3-chloro-2-methylbenzenamine (0.003 mol) were refluxed for 5 h using methanol (25 ml) as solvent. The progress of the reaction was followed by TLC until the reaction was complete. The reaction product was cooled to 273 K. The precipitate was filtered and washed with diethyl ether. The residue was recrystallized from methanol. Brown single crystals were obtained.

**Refinement**

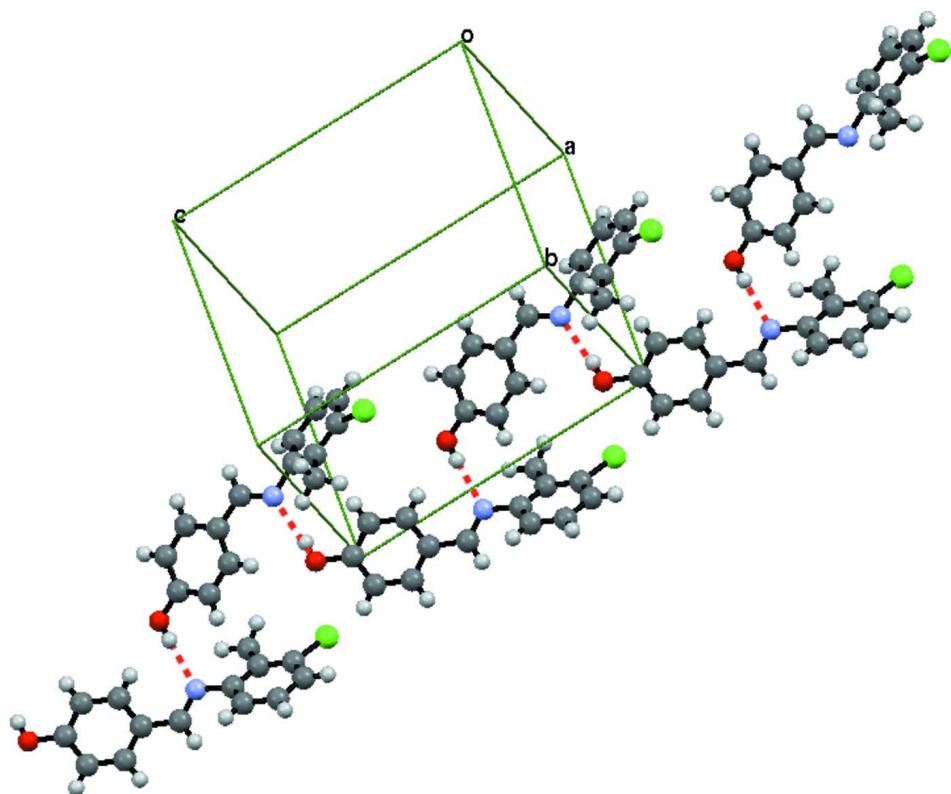
In the absence of significant anomalous dispersion effects Friedel pairs have been merged. All the hydrogen atoms of the compound are fixed geometrically (O—H = 0.88 Å and C—H = 0.93–0.97 Å) and allowed to ride on their parent atoms.

**Computing details**

Data collection: *CrysAlis PRO* (Oxford Diffraction, 2009); cell refinement: *CrysAlis PRO* (Oxford Diffraction, 2009); data reduction: *CrysAlis PRO* (Oxford Diffraction, 2009); program(s) used to solve structure: *SHELXS97* (Sheldrick, 2008); program(s) used to refine structure: *SHELXL97* (Sheldrick, 2008); molecular graphics: Mercury (Macrae *et al.*, 2006); software used to prepare material for publication: *publCIF* (Westrip, 2010).

**Figure 1**

ORTEP diagram of the title compound with 50% probability ellipsoids.

**Figure 2**

Packing diagram of the title compound, viewed along [1 - 1 0] direction. O—H...N hydrogen bonds are indicated by dashed lines.

4-[(3-Chloro-2-methylphenyl)iminomethyl]phenol

Crystal data

$C_{14}H_{12}ClNO$	$F(000) = 512$
$M_r = 245.70$	$D_x = 1.389 \text{ Mg m}^{-3}$
Orthorhombic, $P2_12_12_1$	Mo $K\alpha$ radiation, $\lambda = 0.71073 \text{ \AA}$
Hall symbol: P 2ac 2ab	Cell parameters from 2042 reflections
$a = 7.5271 (9) \text{ \AA}$	$\theta = 2.3\text{--}30.6^\circ$
$b = 12.4095 (15) \text{ \AA}$	$\mu = 0.31 \text{ mm}^{-1}$
$c = 12.5800 (14) \text{ \AA}$	$T = 103 \text{ K}$
$V = 1175.1 (2) \text{ \AA}^3$	Block, brown
$Z = 4$	$0.26 \times 0.20 \times 0.18 \text{ mm}$

Data collection

Oxford Diffraction Xcalibur Eos diffractometer	2042 independent reflections
Radiation source: fine-focus sealed tube	1856 reflections with $I > 2\sigma(I)$
Graphite monochromator	$R_{\text{int}} = 0.037$
Detector resolution: 16.0839 pixels $\text{mm}^{-1}$	$\theta_{\text{max}} = 30.6^\circ$ , $\theta_{\text{min}} = 2.3^\circ$
$\omega$ scans	$h = -10 \rightarrow 7$
6050 measured reflections	$k = -17 \rightarrow 16$
	$l = -16 \rightarrow 17$

Refinement

Refinement on $F^2$	Secondary atom site location: difference Fourier map
Least-squares matrix: full	Hydrogen site location: inferred from neighbouring sites
$R[F^2 > 2\sigma(F^2)] = 0.047$	H-atom parameters constrained
$wR(F^2) = 0.123$	$w = 1/[\sigma^2(F_o^2) + (0.0838P)^2 + 0.0338P]$
$S = 1.07$	where $P = (F_o^2 + 2F_c^2)/3$
2042 reflections	$(\Delta/\sigma)_{\text{max}} < 0.001$
155 parameters	$\Delta\rho_{\text{max}} = 0.71 \text{ e \AA}^{-3}$
0 restraints	$\Delta\rho_{\text{min}} = -0.46 \text{ e \AA}^{-3}$
Primary atom site location: structure-invariant direct methods	

Special details

**Geometry.** Bond distances, angles *etc.* have been calculated using the rounded fractional coordinates. All su's are estimated from the variances of the (full) variance-covariance matrix. The cell e.s.d.'s are taken into account in the estimation of distances, angles and torsion angles

**Refinement.** Refinement on  $F^2$  for ALL reflections except those flagged by the user for potential systematic errors. Weighted  $R$ -factors  $wR$  and all goodnesses of fit  $S$  are based on  $F^2$ , conventional  $R$ -factors  $R$  are based on  $F$ , with  $F$  set to zero for negative  $F^2$ . The observed criterion of  $F^2 > \sigma(F^2)$  is used only for calculating  $-R$ -factor-obs *etc.* and is not relevant to the choice of reflections for refinement.  $R$ -factors based on  $F^2$  are statistically about twice as large as those based on  $F$ , and  $R$ -factors based on ALL data will be even larger.

Fractional atomic coordinates and isotropic or equivalent isotropic displacement parameters ( $\text{\AA}^2$ )

	$x$	$y$	$z$	$U_{\text{iso}}^*/U_{\text{eq}}$
Cl1	0.20725 (8)	0.07415 (5)	0.21487 (5)	0.0206 (2)
O2	-0.2400 (2)	0.06296 (14)	1.08991 (14)	0.0200 (5)
N3	-0.0186 (3)	0.11403 (16)	0.60025 (16)	0.0151 (5)
C4	0.0219 (3)	0.16256 (18)	0.50001 (19)	0.0142 (6)
C5	0.0934 (3)	0.09792 (18)	0.41844 (19)	0.0144 (6)
C6	0.1173 (3)	0.1473 (2)	0.31955 (19)	0.0147 (6)

C7	0.0749 (3)	0.2551 (2)	0.3006 (2)	0.0182 (7)
C8	0.0060 (3)	0.3171 (2)	0.3831 (2)	0.0192 (7)
C9	-0.0203 (3)	0.27089 (18)	0.4822 (2)	0.0165 (6)
C10	0.0205 (3)	0.16597 (19)	0.68499 (19)	0.0157 (6)
C11	-0.0336 (3)	0.13243 (19)	0.79125 (19)	0.0146 (6)
C12	-0.1136 (3)	0.03193 (19)	0.81002 (19)	0.0162 (6)
C13	-0.1794 (3)	0.00693 (19)	0.91011 (19)	0.0154 (6)
C14	-0.1689 (3)	0.08211 (19)	0.99228 (18)	0.0148 (6)
C15	-0.0820 (3)	0.18052 (19)	0.9758 (2)	0.0170 (6)
C16	-0.0153 (3)	0.20481 (19)	0.8757 (2)	0.0161 (6)
C17	0.1424 (3)	-0.01811 (19)	0.4369 (2)	0.0191 (7)
H2	-0.28810	0.00190	1.09040	0.0300*
H7	0.09280	0.28580	0.23230	0.0220*
H8	-0.02280	0.39070	0.37150	0.0230*
H9	-0.06730	0.31310	0.53850	0.0200*
H10	0.08860	0.23010	0.67830	0.0190*
H12	-0.12270	-0.01910	0.75400	0.0190*
H13	-0.23160	-0.06160	0.92270	0.0180*
H15	-0.06890	0.23030	1.03260	0.0200*
H16	0.04360	0.27160	0.86450	0.0190*
H17A	0.09600	-0.06240	0.37870	0.0290*
H17B	0.09100	-0.04250	0.50440	0.0290*
H17C	0.27200	-0.02500	0.43980	0.0290*

Atomic displacement parameters ( $\text{\AA}^2$ )

	$U^{11}$	$U^{22}$	$U^{33}$	$U^{12}$	$U^{13}$	$U^{23}$
C11	0.0193 (3)	0.0256 (3)	0.0169 (3)	-0.0005 (2)	0.0037 (2)	-0.0025 (2)
O2	0.0225 (9)	0.0216 (8)	0.0160 (8)	-0.0038 (7)	0.0057 (7)	-0.0002 (7)
N3	0.0108 (9)	0.0184 (9)	0.0160 (9)	-0.0002 (7)	0.0016 (8)	0.0019 (7)
C4	0.0096 (10)	0.0162 (10)	0.0168 (11)	-0.0014 (8)	0.0009 (9)	0.0013 (8)
C5	0.0083 (9)	0.0180 (10)	0.0170 (11)	-0.0006 (8)	-0.0017 (9)	0.0008 (8)
C6	0.0082 (9)	0.0213 (10)	0.0146 (10)	-0.0013 (8)	0.0015 (8)	-0.0017 (8)
C7	0.0150 (11)	0.0215 (11)	0.0180 (12)	-0.0024 (9)	0.0001 (9)	0.0043 (9)
C8	0.0147 (11)	0.0183 (11)	0.0246 (12)	-0.0002 (9)	-0.0011 (10)	0.0039 (9)
C9	0.0108 (10)	0.0173 (11)	0.0214 (12)	0.0014 (8)	0.0012 (9)	-0.0009 (9)
C10	0.0108 (10)	0.0171 (10)	0.0191 (11)	0.0005 (8)	0.0020 (9)	0.0000 (8)
C11	0.0104 (9)	0.0191 (10)	0.0144 (10)	0.0004 (8)	0.0002 (9)	0.0009 (9)
C12	0.0133 (10)	0.0189 (10)	0.0164 (11)	0.0002 (8)	-0.0002 (9)	-0.0003 (8)
C13	0.0121 (10)	0.0175 (10)	0.0167 (10)	-0.0003 (8)	0.0017 (9)	0.0002 (9)
C14	0.0121 (9)	0.0175 (10)	0.0148 (10)	0.0013 (8)	0.0016 (8)	0.0001 (8)
C15	0.0172 (11)	0.0178 (10)	0.0160 (11)	-0.0013 (9)	-0.0001 (10)	-0.0026 (8)
C16	0.0135 (11)	0.0151 (10)	0.0196 (11)	-0.0014 (8)	-0.0012 (9)	0.0008 (9)
C17	0.0185 (12)	0.0180 (11)	0.0207 (12)	0.0029 (9)	0.0033 (10)	0.0003 (9)

Geometric parameters ( $\text{\AA}$ ,  $^\circ$ )

C11—C6	1.737 (2)	C12—C13	1.388 (3)
O2—C14	1.361 (3)	C13—C14	1.395 (3)
O2—H2	0.8400	C14—C15	1.401 (3)

N3—C4	1.430 (3)	C15—C16	1.389 (4)
N3—C10	1.280 (3)	C7—H7	0.9500
C4—C9	1.399 (3)	C8—H8	0.9500
C4—C5	1.409 (3)	C9—H9	0.9500
C5—C6	1.398 (3)	C10—H10	0.9500
C5—C17	1.504 (3)	C12—H12	0.9500
C6—C7	1.396 (3)	C13—H13	0.9500
C7—C8	1.392 (3)	C15—H15	0.9500
C8—C9	1.386 (4)	C16—H16	0.9500
C10—C11	1.458 (3)	C17—H17A	0.9800
C11—C16	1.398 (3)	C17—H17B	0.9800
C11—C12	1.405 (3)	C17—H17C	0.9800
C14—O2—H2	109.00	C11—C16—C15	120.9 (2)
C4—N3—C10	118.2 (2)	C6—C7—H7	120.00
N3—C4—C5	118.9 (2)	C8—C7—H7	120.00
C5—C4—C9	121.1 (2)	C7—C8—H8	120.00
N3—C4—C9	119.8 (2)	C9—C8—H8	120.00
C4—C5—C6	116.6 (2)	C4—C9—H9	120.00
C4—C5—C17	121.7 (2)	C8—C9—H9	120.00
C6—C5—C17	121.7 (2)	N3—C10—H10	118.00
C11—C6—C5	119.71 (18)	C11—C10—H10	118.00
C11—C6—C7	117.42 (18)	C11—C12—H12	120.00
C5—C6—C7	122.9 (2)	C13—C12—H12	120.00
C6—C7—C8	119.2 (2)	C12—C13—H13	120.00
C7—C8—C9	119.7 (2)	C14—C13—H13	120.00
C4—C9—C8	120.6 (2)	C14—C15—H15	120.00
N3—C10—C11	123.8 (2)	C16—C15—H15	120.00
C10—C11—C16	119.1 (2)	C11—C16—H16	120.00
C12—C11—C16	119.0 (2)	C15—C16—H16	119.00
C10—C11—C12	121.8 (2)	C5—C17—H17A	110.00
C11—C12—C13	120.3 (2)	C5—C17—H17B	109.00
C12—C13—C14	120.2 (2)	C5—C17—H17C	109.00
O2—C14—C13	122.0 (2)	H17A—C17—H17B	109.00
O2—C14—C15	118.0 (2)	H17A—C17—H17C	109.00
C13—C14—C15	120.0 (2)	H17B—C17—H17C	109.00
C14—C15—C16	119.5 (2)		
C10—N3—C4—C5	138.4 (2)	C6—C7—C8—C9	-0.4 (3)
C10—N3—C4—C9	-45.7 (3)	C7—C8—C9—C4	0.0 (3)
C4—N3—C10—C11	171.9 (2)	N3—C10—C11—C12	8.7 (4)
N3—C4—C5—C6	175.1 (2)	N3—C10—C11—C16	-167.4 (2)
N3—C4—C5—C17	-5.2 (3)	C10—C11—C12—C13	-173.6 (2)
C9—C4—C5—C6	-0.8 (3)	C16—C11—C12—C13	2.5 (3)
C9—C4—C5—C17	178.9 (2)	C10—C11—C16—C15	173.2 (2)
N3—C4—C9—C8	-175.3 (2)	C12—C11—C16—C15	-2.9 (3)
C5—C4—C9—C8	0.6 (3)	C11—C12—C13—C14	1.0 (3)
C4—C5—C6—C11	179.21 (17)	C12—C13—C14—O2	176.5 (2)
C4—C5—C6—C7	0.5 (3)	C12—C13—C14—C15	-4.0 (3)

C17—C5—C6—C11	-0.5 (3)	O2—C14—C15—C16	-177.0 (2)
C17—C5—C6—C7	-179.2 (2)	C13—C14—C15—C16	3.5 (3)
C11—C6—C7—C8	-178.66 (18)	C14—C15—C16—C11	0.0 (3)
C5—C6—C7—C8	0.1 (3)		

*Hydrogen-bond geometry (Å, °)*

C<sub>g</sub> is the centroid of the C11–C16 ring.

<i>D</i> —H... <i>A</i>	<i>D</i> —H	H... <i>A</i>	<i>D</i> ... <i>A</i>	<i>D</i> —H... <i>A</i>
O2—H2...N3 <sup>i</sup>	0.84	2.05	2.854 (3)	160
C12—H12...O2 <sup>ii</sup>	0.95	2.37	3.204 (3)	146
C17—H17B...N3	0.98	2.43	2.895 (3)	108
C17—H17C...C <sub>g</sub> <sup>iii</sup>	0.98	2.73	3.649 (2)	157

Symmetry codes: (i)  $-x-1/2, -y, z+1/2$ ; (ii)  $-x-1/2, -y, z-1/2$ ; (iii)  $-x+1/2, -y, z-1/2$ .