



Since January 2020 Elsevier has created a COVID-19 resource centre with free information in English and Mandarin on the novel coronavirus COVID-19. The COVID-19 resource centre is hosted on Elsevier Connect, the company's public news and information website.

Elsevier hereby grants permission to make all its COVID-19-related research that is available on the COVID-19 resource centre - including this research content - immediately available in PubMed Central and other publicly funded repositories, such as the WHO COVID database with rights for unrestricted research re-use and analyses in any form or by any means with acknowledgement of the original source. These permissions are granted for free by Elsevier for as long as the COVID-19 resource centre remains active.



IMAGES IN INTENSIVE MEDICINE

Hydropneumothorax diagnosed by lung ultrasound in a COVID-19 patient

Diagnóstico de hidroneumotórax por ecografía pulmonar en un paciente con la COVID-19

P. Blanco^{a,b,*}, L. Figueroa^{a,b}, M.F. Menéndez^a

^a High-dependency Unit/Critical Care COVID-19 Unit (UCIM), Hospital "Dr. Emilio Ferreyra", Necochea, Argentina

^b Department of Teaching and Research, Hospital "Dr. Emilio Ferreyra", Necochea, Argentina

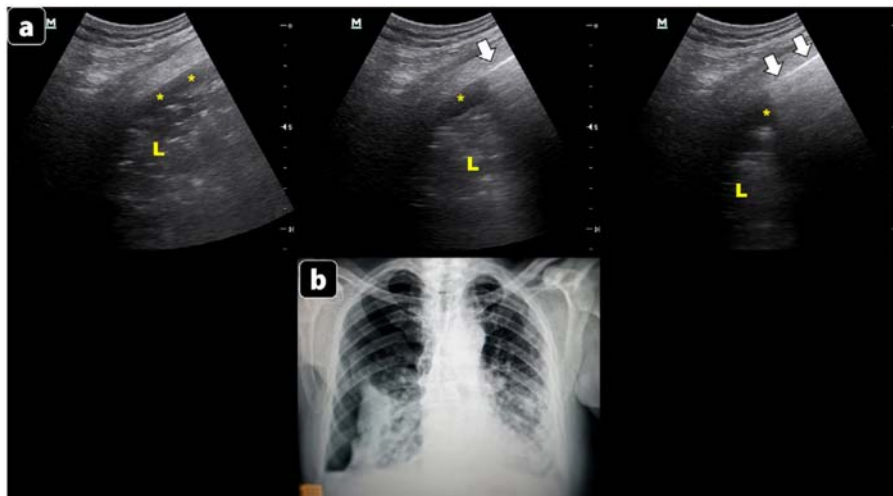


Figure 1

* Corresponding author.

E-mail address: ohтусabes@gmail.com (P. Blanco).

<https://doi.org/10.1016/j.medic.2021.08.018>

2173-5727/© 2021 Elsevier España, S.L.U. and SEMICYUC. All rights reserved.

Please cite this article as: P. Blanco, L. Figueroa and M.F. Menéndez, Hydropneumothorax diagnosed by lung ultrasound in a COVID-19 patient, *Medicina Intensiva*, <https://doi.org/10.1016/j.medic.2021.08.018>

Among the several signs of pneumothorax on lung ultrasound (LUS), a definite one is the presence of the lung point, which is observed as the contact between the sliding and non-sliding lung ([Video 1](#)). There is also an unusual sign of pneumothorax, which is called the “hydro-point”, as depicted in a 70-year-old male patient with COVID-19 pneumonia. Here, the air in the pleura (pneumothorax, arrows) contacts intermittently with the pleural fluid (pleural effusion, asterisks) within the respiratory cycles ([Fig. 1a](#); L: lung consolidation and [Video 2](#)). Chest X-ray showed a similar picture ([Fig. 1b](#)). The hydro-point defines the presence of hydropneumothorax and is best assessed with a convex or phased-array probe in basal lateral or posterolateral views of the thorax. Intensivists should be aware of this sign to aid in diagnosis of pneumothorax in the presence of pleural effusion.

Appendix A. Supplementary data

Supplementary data associated with this article can be found, in the online version, at [doi:10.1016/j.medin.2021.08.009](https://doi.org/10.1016/j.medin.2021.08.009)