



Screening and identification of endometrial proteins as novel potential biomarkers for repeated implantation failure

Chong Wang^{1,2}, Ying Feng¹, Wen-Jing Zhou¹, Zhao-Jun Cheng¹, Mei-Yan Jiang¹, Yan Zhou¹ and Xiao-Yang Fei¹

¹ Hangzhou Women's Hospital (Hangzhou Maternity and Child Health Care Hospital), Hangzhou, China

² Affiliated Hangzhou First People's Hospital, Zhejiang University School of Medicine, Hangzhou, China

ABSTRACT

Inadequate endometrial receptivity may be responsible for the low implantation rate of transferred embryos in in vitro fertilization (IVF) treatments. Patients with repeated implantation failure (RIF) impact the clinical pregnancy rate for IVF. We collected endometrial tissue during the implantation window of hysteroscopy biopsies from September 2016 to December 2019 and clinical data were collected simultaneously. Patients were divided into RIF and pregnant controls group according to pregnancy outcomes. A total of 82 differentially expressed endometrial proteins were identified, including 55 up-regulated proteins (>1.50 -fold, $P < 0.05$) and 27 down-regulated proteins (<0.67 -fold, $P < 0.05$) by iTRAQ labeling coupled with the 2D LC MS/MS technique in the RIF group. String analysis found interactions between these proteins which assembled in two bunches: ribosomal proteins and blood homeostasis proteins. The most significant enriched Gene Ontology terms were negative regulation of hydrolase activity, blood microparticle, and enzyme inhibitor activity. Our results emphasized the corticosteroid-binding globulin and fetuin-A as the specific proteins of endometrial receptivity by Western-blot. Our study provided experimental data to establish the objective indicator of endometrial receptivity, and also provided new insight into the pathogenesis of RIF.

Submitted 31 August 2020

Accepted 3 February 2021

Published 12 March 2021

Corresponding author

Xiao-Yang Fei, feixy1962@163.com

Academic editor

Wei Cui

Additional Information and
Declarations can be found on
page 15

DOI 10.7717/peerj.11009

© Copyright
2021 Wang et al.

Distributed under
Creative Commons CC-BY 4.0

OPEN ACCESS

Subjects Molecular Biology, Gynecology and Obstetrics, Women's Health

Keywords Repeated implantation failure, Endometrial receptivity, Proteomics, Corticosteroid binding globin

INTRODUCTION

According to the World Health Organization, infertility is most prevalent in South Asia, Sub-Saharan Africa, North Africa/Middle East, Central/Eastern Europe, and Central Asia (*Mascarenhas et al., 2012*). There is a 25% infertility rate among couples of childbearing age in China (*Zhou et al., 2018*). Assisted reproductive technology (ART) is currently the most effective method to assist infertile patients (*Kushnir et al., 2017*).

In vitro fertilization and embryo transfer (IVF-ET) are the most common methods of ART. Despite the success of these methods, some patients still have difficulty becoming pregnant even after multiple transplantations (2–6 times) of high-quality embryos. These patients are classified as repeated implantation failure (RIF) patients (*Margalioth et al.,*

2006) and impact the clinical pregnancy rate of ART. Embryo quality, which can be evaluated using several criteria, and endometrial receptivity are the two key factors for successful implantation. Endometrial receptivity is defined as the period during which the endometrial epithelium acquires a functional, but transient, ovarian steroid-dependent status that supports blastocyst acceptance and implantation. This period is called the window of implantation (WOI). Approximately 25.9% of IVF-ET cases have a displaced WOI (Ruiz-Alonso *et al.*, 2013), and the lack of synchronization between the embryo and endometrial receptivity may be one of the causes of RIF. The standard for evaluating endometrial receptivity is the pinopodes in endometrial histology but these can change depending on the sample used and the period in the menstrual cycle (Acosta *et al.*, 2000). Ultrasound examination is a widely used, noninvasive and inexpensive test, and includes endometrial thickness, endometrial type, endometrial volume, and uterine artery and sub-endometrial blood flow. However, ultrasound examination has little ability to predict the pregnancy rate with strong subjectivity. A number of studies have applied omics techniques to analyze the human endometrium along different menstrual cycles, using biopsy or curettage (Bissonnette *et al.*, 2016; Chen *et al.*, 2009; DeSouza *et al.*, 2005; Parmar *et al.*, 2009; Rai *et al.*, 2010; Ruiz-Alonso, Blesa & Simón, 2012; Yap *et al.*, 2011). Previous research (Bissonnette *et al.*, 2016; Chen *et al.*, 2009; DeSouza *et al.*, 2005; Parmar *et al.*, 2009; Rai *et al.*, 2010) used proteomic techniques as 2D differentials in-gel electrophoresis (DIGE), Nanobore LC-MS/MS, and MALDI-TOF-TOF to study the endometrium protein changes between the proliferative and secretory phase. Yap *et al.* (2011) identified IL-11 regulated plasma membrane proteins ANXA2, and the lipid-raft protein FLOT1 in human endometrial epithelial cells in vitro in the receptive phase.

We screened differential WOI endometrial proteins using iTRAQ labeling coupled with a 2D LC-MS/MS technique to find potential biomarkers for RIF patients. Our study provided experimental data to establish an objective indicator of endometrial receptivity and a new way to reveal the pathogenesis of RIF.

MATERIALS & METHODS

Sample collection

This study was approved by the Ethics Committee of the Faculty of Medicine (Hangzhou Women's Hospital, China) (Approval Number: 2016001-10). Written informed consent was obtained from all subjects before endometrial collection.

The workflow of our study is shown in Fig. 1. Failure of three or more cycles in which reasonably high-quality embryos were transferred was defined as RIF (Margalioth *et al.*, 2006). Grade I and grade II embryos were determined to be high-quality embryos (Gardner *et al.*, 1998). The blastocyst quality was determined according to the definitions by Gardner *et al.* (1998). Blastocysts were considered high-quality if they had a grade 3 or 4 blastocoel, a grade A or B inner cell mass, and a grade A or B trophectoderm on days 5 or 6. We collected data from fifty-two RIF cases and 135 pregnancy cases undergoing IVF-ET treatment at our hospital between September 2016 to December 2019. Data including age, follow-up outcomes, and clinical examination findings were collected. The endometrium

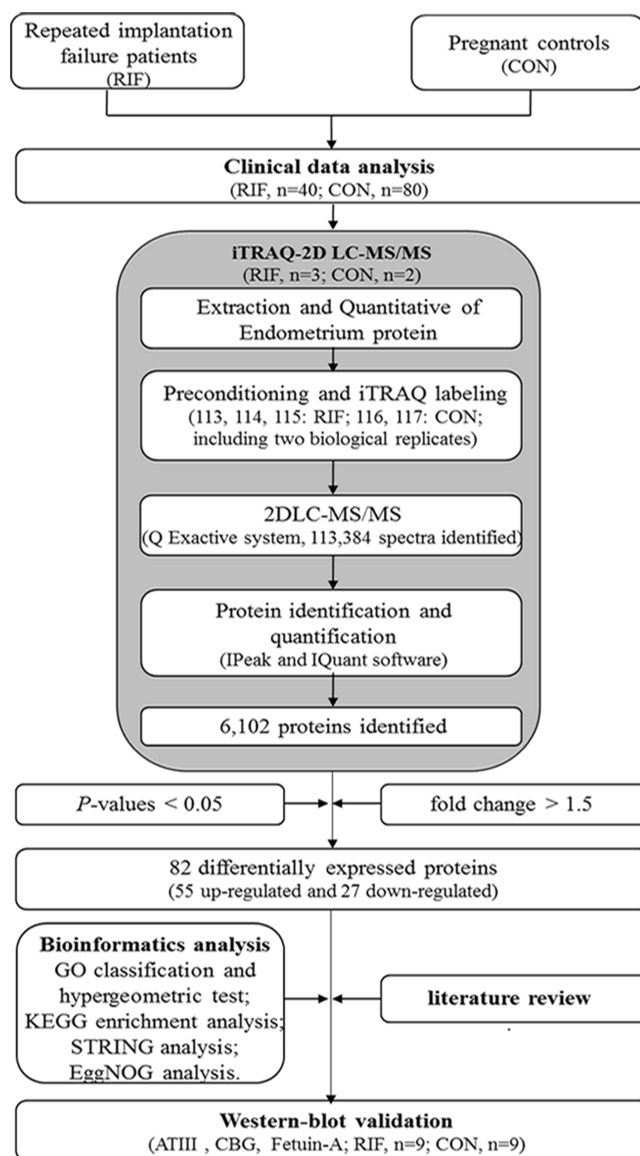


Figure 1 The workflow for endometrial biomarkers of repeated implantation failure (RIF) and pregnant controls (CON).

Full-size DOI: [10.7717/peerj.11009/fig-1](https://doi.org/10.7717/peerj.11009/fig-1)

was collected at WOI by hysteroscopy biopsy at LH+7. The endometrium was then washed with saline immediately and frozen in liquid nitrogen and stored until protein extraction.

Endometrium protein extraction

We randomly selected 2 pregnancy cases and 3 RIF cases for endometrial protein extraction. Protein extraction was performed using a lysis buffer after grinding the sample (100 mg) to powder in liquid nitrogen. Phenylmethanesulfonyl fluoride (PMSF) was added to a final concentration of 1mM and ethylene diamine tetraacetic acid (EDTA) was added to a final concentration of 2mM, held for 5 min, and then dithiothreitol (DTT) was added to a final

concentration of 10mM. The sample was placed in an ice bath ultrasound for 5 min and the lysate was centrifuged at 15,000 g for 20 min. The supernatant was precipitated 5 times with 1 mL acetone and incubated at 20 °C for 2 h and then centrifuged at 15,000 g at 4 °C for 20 min. The precipitate was washed in chilled acetone, incubated at 20 °C for 30 min, and centrifuged again at 15,000 g and 4 °C for 20 min. The washing was repeated twice, then air dried and the precipitate was re-dissolved with the lysis buffer. The precipitate was centrifuged again at 15,000 g and 4 °C for 20 min after an ice bath ultrasound for 5 min. The supernatant was determined using the Bradford Protein Assay Kit to detect the protein concentration.

Protein digestion and iTRAQ-2D LC-MS/MS

A solution of 1:50 trypsin (Promega, USA)-to-protein mass was prepared. Then, a total of 100 µg of protein from each group was digested with prepared solution at 37 °C for 16 h. The peptides were reconstituted in 0.2M TEAB and processed according to the manufacturer's protocol for 8-plex iTRAQ reagent (AB SCIEX, Framingham, MA, USA). Three biological replicates of the RIF group were labeled with 113, 114, and 115 isobaric tags, respectively. The peptides with two biological replicates from the pregnant group were labeled with 116 and 117 isobaric tags, respectively.

A high pH reversed-phase chromatography column (Phenomenex, Gemini-NX 3u C18110A, 150*2.00 mm) was used for the first-dimensional fractionation procedure. We collected 16 fractions in all, and then dried them for next LC-MS analysis. The fractions were re-suspended in 2% acetonitrile containing 0.1% formic acid, and then loaded into a C18 trap column (Acclaim PepMap 75 µm × 150 mm, C18, 3 µm, 100A). Then, online chromatography separation was performed on the nanoLC system (Dionex Ultimate 3000 RSLCnano) (Fan, Wang & Wang, 2019). The trapping and desalting procedures were carried out at a flow rate of 3 µL/min for 5 min with 100% solvent A (0.1% formic acid, 2% acet- onitrile and 98% water). The peptides were eluted using a 65 min gradient of buffer A (0.1% formic acid) to buffer B (80% ACN containing 0.1% formic acid) at 300 nL/min on an analytical column (Acclaim PepMap 75 µm × 15 cm C18-CL, 3 µm 100 Å, Thermo160321). Q Exactive system (Thermo Scientific) fitted with a Nanospray ion source was used to acquire tandem MS data. Specific steps are as follows: data were acquired using an ion spray voltage of 2.2 kV. MS spectra across the scan range of 350–1,800 m/z with a 70,000 resolution using maximum injection time (60 ms) per spectrum. Twenty of the most intense precursors per MS cycle were selected for fragmentation and were detected with 100 ms maximum injection time. Tandem mass spectra were recorded at a 17,500 resolution with the rolling collision energy turned on and iTRAQ reagent collision energy adjustment turned on. The lock mass option was enabled for more accurate measurements. Dynamic exclusion was set for 10 s.

Finally, the acquired MS/MS data were analyzed using IPeak and IQuant software as former researchers (Wen et al., 2015; Wen et al., 2014; Fan, Wang & Wang, 2019). Only proteins identified at global FDR ≤1% with ≥1 peptide were considered for further downstream analysis. A differentially expressed protein was determine only if it is identified and quantified with at least one significant peptide with the $P < 0.05$ and fold change > 1.5.

Bioinformatics analysis

Principal components analysis (PCA) was performed to confirm the sample repeatability. Functional annotation was performed using the Gene Ontology (GO) database (<http://www.geneontology.org>) and included the cellular component, molecular function, and biological process. The differentially expressed protein–protein network was analyzed by STRING software (<http://www.string-db.org/>). The Kyoto Encyclopedia of Genes and Genomes (KEGG) database (<http://www.genome.jp/kegg/or> <http://www.kegg.jp/>) was used to predict the main metabolic pathways (Kanehisa et al., 2007). We obtained the significantly enriched GO/pathway items by hypergeometric test. The EggNOG database (<http://eggnogdb.embl.de>) was used for pairwise orthology predictions, functional annotation, and classification (Huerta-Cepas et al., 2015).

Western-blot analysis

We lysed endometrial tissues with 200 μ L of RIPA lysate (P0013B, Beyotime, Shanghai, China) plus 1 mM PMSF at 4 °C for 30 min, and then harvested the supernatant with centrifugation at 11,000 g for 10 min. The harvested protein concentrations were measured with a BCA quantitative kit (P0009, Beyotime). Samples were subjected to polyacrylamide gel electrophoresis, and were transferred onto a PVDF membrane (IPVH00010, Millipore, Massachusetts, USA). The membrane was blocked by 5% skimmed milk powder solution at room temperature for 2 h and was incubated with primary antibodies, including antithrombin III (rabbit monoclonal, ab126598, abcam, Cambridge, United Kingdom), cortisol binding globulin (rabbit monoclonal, ab110648, abcam), fetuin-A (alpha-2-HS-glycoprotein, rabbit monoclonal, ab137125, abcam), GAPDH (mouse monoclonal, 60004-1-Ig, proteintech, Beijing, China), and alpha tubulin (rabbit polyclonal, 11224-1-AP, proteintech) at 4 °C overnight. Secondary antibodies as goat anti-mouse IgG-HRP (BK0023, BEST, Xian, China) and goat anti-rabbit IgG-HRP (BK0027, BEST) were then incubated with membrane at room temperature for 1.5 h. The blots were visualized using the ECL Plus Luminous Kit (S17851, Yeasen, Shanghai, China). At last, the results were measured with Image J software.

Statistical analysis

Parametric data were tested using the chi-square test for the composition ratios and t-tests for means of two groups. Nonparametric analysis was carried out using the Mann–Whitney U-test. Parametric data were presented as mean \pm SD while nonparametric data were presented as median \pm IQR, and $P < 0.05$ was considered to be statistically significant by the SPSS software, version 16.0 (SPSS, Chicago, IL). Our clinical data was able to identify significant differences in 81.45% of RIF cases and controls at a statistical support level of $\alpha = 0.05$ with a $d = 0.5$ applying a one tail model calculated by Gpower 3.0.5.

RESULTS

Clinical data analysis

We recruited 52 RIF patients and 135 pregnant patients undergoing IVF-ET treatment between September 2016 to December 2019. Data, including age, follow-up outcomes, and

Table 1 General and clinical data of repeated implantation failure patients (RIF) and pregnant controls.

	RIF group (n = 40)	Control group (n = 80)
Age (year) ^a	32.60 ± 3.90	32.60 ± 3.84
Infertility years (year) ^a	4.32 ± 2.49	3.88 ± 2.84
Infertility type (n) ^b		
Oviduct factors	20	33
Ovulation disorders	7	17
Ovarium factors	3	9
Pelvic cavity factors	3	6
Male factors	3	7
Unknown causes	4	8
Endometrium thickness of transplant day (mm) ^a	9.71 ± 1.77	10.52 ± 2.27
High-quality rate of transplant embryo (%) ^b	87.75 (222/253)	90.91 (140/154)
BMI (kg/m ²) ^a	21.07 ± 2.85	21.26 ± 2.55
AMH (ng/mL) ^a	3.59 ± 2.55	3.24 ± 2.13
D-dimer (mg/L) ^c	220.00 ± 202.50	210.00 ± 230.00
Fibrinogen (G/L) ^a	2.49 ± 0.65	2.54 ± 0.72
Basal hormone level		
Follicle-stimulating hormone (IU/L) ^a	5.30 ± 2.37	5.26 ± 2.13
Estradiol (pg/mL) ^c	27.00 ± 17.30	25.00 ± 22.50
Progesterone (ng/mL) ^a	0.62 ± 0.29	0.65 ± 0.52
Prolactin (ng/mL) ^a	14.02 ± 6.18	13.87 ± 6.46
Luteinizing hormone (IU/L) ^a	3.14 ± 1.83	2.93 ± 2.15
Testosterone (ng/mL) ^a	0.53 ± 0.43	0.46 ± 0.26
Transformation day hormone level		
Estradiol (pg/mL) ^a	554.33 ± 268.31	585.78 ± 398.97
Progesterone (ng/mL) ^a	0.48 ± 0.27	0.52 ± 0.34

Notes.

All data are presented as the mean ± SD.

BMI, body mass index; AMH, anti-Mullerian hormone.

^aP-value between two groups using the *t*-test.

^bP-value between two groups using the chi-square test.

^cP-value between two groups using the Mann-Whitney U-test.

clinical examination findings were collated into databases. After correcting for age, since age may affect the pregnancy rate, a total of 40 subjects with RIF under 40 years old were paired with 80 pregnant subjects by age, body mass index, and treatment time and then analyzed. There were no significant differences between RIF patients and pregnant controls in general and clinical data ($P > 0.05$, Table 1).

Endometrial proteomics results

We identified a total of 6,102 proteins through iTRAQ-2D LC-MS/MS from 113,384 spectra and 31,024 peptides, respectively (Table S1). Among the 6,102 identified proteins, 5,840 had GO annotations (95.71% of all proteins); 5,504 had KEGG annotations (90.20% of all proteins); and 6,097 had EggNOG annotations (99.92% of all proteins).

We performed quality control on the quantitative results with volcano maps and the distributions of coefficient of variation. We selected the fold change for 6,102 proteins and found 285 proteins with fold change in RIF cases/pregnant controls >1.5 or <0.67 . And we only used proteins with $P < 0.05$. Further screening revealed 82 differentially expressed proteins in RIF patients compared with the pregnant controls, including 55 up-regulated proteins (>1.50 -fold, $P < 0.05$) and 27 down-regulated proteins (<0.67 -fold, $P < 0.05$) (Table 2). The hierarchical clustering provided a visualized mode to display the clustering patterns of the differentially expressed proteins between the groups (Fig. 2).

Bioinformatics analysis results

Gene Ontology analysis of differentially expressed proteins revealed that most of the proteins were involved in the response to stimulus (42 proteins), extracellular region (35 proteins), and structural molecule activity (10 proteins) (Fig. 3A). The most significantly enriched GOs were negative regulation of hydrolase activity, blood microparticle, and enzyme inhibitor activity through hypergeometric testing (Fig. 3B). Seven proteins (SPB6, APOA1, GMIP, THBG, CBG, ANT3, and FETUA) were identified in the hydrolase activity term, seven proteins (VTDB, IGHG4, APOA1, A1AG2, FETUA, ANT3, and A1AG1) were identified in the blood microparticle term, and another seven proteins (ANT3, FETUA, CBG, ASPN, SPB6, THBG, and APOA1) were identified in the enzyme inhibitor activity term. Among these proteins, ANT3 and FETUA were identified in prior studies (Hannan et al., 2010; DeSouza et al., 2005) which played an important molecular function in endopeptidase inhibitor activity by GO analysis (Fig. 3C). String analysis found interactions between these proteins (Fig. 3D) which assembled in two bunches: ribosomal proteins and blood homeostasis proteins.

In addition, the KEGG pathway mapping revealed the immune system (seven proteins), transport and catabolism (five proteins), and translation (five proteins) pathways (Fig. 4A). Enriched KEGG pathway analysis showed the ribosome and primary immunodeficiency pathways as significant with $P < 0.05$ (Fig. 4B). Finally, we used the EggNOG database to determine that the differential proteins associated with RIF are mostly clustered in classifications including posttranslational modification, protein turnover, chaperones (22 proteins), translation, ribosomal structure and biogenesis (eight proteins), and carbohydrate transport and metabolism (six proteins) (Fig. 4C).

Western-blot results

We verified endometrial antithrombin-III (ANT3, P01008), corticosteroid-binding globulin (CBG, P08185), and fetuin-A (FETUA, P02765) levels using the Western-blot. We found significantly higher levels of CBG and fetuin-A in RIF patients (Fig. 5). A significant difference in CBG and fetuin-A was found in RIF patients using grayscale detection by Image J (1.39 fold, $P = 0.003$; 1.47 fold, $P = 0.002$; respectively).

DISCUSSION

Assisted reproductive technology has made rapid progress over the last 40 years. However, the clinical pregnancy rate still only ranges between 33.8 and 42.7% (ESHRE et al., 2016;

Table 2 Differentially expressed proteins and their expression levels quantified by iTRAQ-2DLC-MS/MS.

Protein ID	Alternative name	Protein name	iTRAQ ratio
Increased in RIF/Controls			
Q9NYZ3	GTSE1	G2 and S phase-expressed protein 1	3.42
Q9UN19	DAPP1	Dual adapter for phosphotyrosine and 3-phosphotyrosine and 3-phosphoinositide	3.38
Q5W111	SPRY7	SPRY domain-containing protein 7	3.11
P50225	ST1A1	Sulfotransferase 1A1	3.06
Q86UB9	TM135	Transmembrane protein 135	2.59
P05230	FGF1	Fibroblast growth factor 1	2.56
Q8NFU3	TSTD1	Thiosulfate:glutathionesulfurtransferase	2.49
Q8NDA2	HMCN2	Hemicentin-2	2.49
Q9H477	RBSK	Ribokinase	2.40
P15169	CBPN	Carboxypeptidase N catalytic chain	2.37
P02763	A1AG1	Alpha-1-acid glycoprotein 1	2.15
Q86VY4	TSYL5	Testis-specific Y-encoded-like protein 5	2.03
Q9UKJ8	ADA21	Disintegrin and metalloproteinase domain-containing protein 21	1.98
P02794	FRIH	Ferritin heavy chain	1.91
Q96RG2	PASK	PAS domain-containing serine/threonine-protein kinase	1.89
P08294	SODE	Extracellular superoxide dismutase [Cu-Zn]	1.88
P08582	TRFM	Melanotransferrin	1.87
Q9P2H3	IFT80	Intraflagellar transport protein 80 homolog	1.82
A0A0B4J1U7	IU7 HV601	Immunoglobulin heavy variable 6-1	1.81
P02765	FETUA	Alpha-2-HS-glycoprotein	1.78
Q9HCJ0	TNR6C	Trinucleotide repeat-containing gene 6C protein	1.78
P01008	ANT3	Antithrombin-III	1.77
Q14353	GAMT	Guanidinoacetate N-methyltransferase	1.77
P19652	A1AG2	Alpha-1-acid glycoprotein 2	1.77
Q86X19	TMM17	Transmembrane protein 17	1.75
O76041	NEBL	Nebulette	1.74
Q03167	TGBR3	Transforming growth factor beta receptor type 3	1.70
Q96EX3	WDR34	WD repeat-containing protein 34	1.67
P02792	FRIL	Ferritin light chain	1.66
Q9NWK9	BCD1	Box C/D snoRNA protein 1	1.64
P15559	NQO1	NAD(P)H dehydrogenase [quinone] 1	1.64
Q96C11	FGGY	FGGY carbohydrate kinase domain-containing protein	1.64
Q99598	TSNAX	Translin-associated protein X	1.63
Q9NZM6	PK2L2	Polycystic kidney disease 2-like 2 protein	1.62
P08185	CBG	Corticosteroid-binding globulin	1.62
Q9BXN1	ASPN	Asporin	1.61
Q15063	POSTN	Periostin	1.61

(continued on next page)

Table 2 (continued)

Protein ID	Alternative name	Protein name	iTRAQ ratio
Q9NVP4	DZAN1	Double zinc ribbon and ankyrin repeat-containing protein 1	1.60
Q14651	PLSI	Plastin-1	1.57
P02774	VTDB	Vitamin D-binding protein	1.57
P05543	THBG	Thyroxine-binding globulin	1.57
P25311	ZA2G	Zinc-alpha-2-glycoprotein	1.56
Q9NZJ9	NUDT4	Diphosphoinositol polyphosphate phosphohydrolase 2	1.55
Q9H649	NSUN3	tRNA (cytosine(34)-C(5))-methyltransferase, mitochondrial	1.55
P80108	PHLD	Phosphatidylinositol-glycan-specific phospholipase D	1.55
Q96AB6	NTAN1	Protein N-terminal asparagine amidohydrolase	1.54
Q9H9L4	KANL2	KAT8 regulatory NSL complex subunit 2	1.54
P02647	APOA1	Apolipoprotein A-I	1.53
P48509	CD151	CD151 antigen	1.53
Q9UBW7	ZMYM2	Zinc finger MYM-type protein 2	1.52
Q96LD8	SEN8	Sentrin-specific protease 8	1.52
P35237	SPB6	Serpin B6	1.52
Q5HYK9	ZN667	Zinc finger protein 667	1.51
Q99735	MGST2	Microsomal glutathione S-transferase 2	1.51
Q9NQG6	MID51	Mitochondrial dynamics protein MID51	1.50
Decreased in RIF/Controls			
Q9H9C1	SPE39	Spermatogenesis-defective protein 39 homolog	0.27
O43314	VIP2	Inositol hexakisphosphate and diphosphoinositol-pentakisphosphate kinase 2	0.36
P28908	TNR8	Tumor necrosis factor receptor superfamily member 8	0.40
Q96RD9	FCRL5	Fc receptor-like protein 5	0.44
P62805	H4	Histone H4	0.47
Q9P107	GMIP	GEM-interacting protein	0.48
Q96S82	UBL7	Ubiquitin-like protein 7	0.53
P18124	RL7	60S ribosomal protein L7	0.53
P56202	CATW	Cathepsin W	0.53
Q6P179	ERAP2	Endoplasmic reticulum aminopeptidase 2	0.57
Q05086	UBE3A	Ubiquitin-protein ligase E3A	0.58
P43403	ZAP70	Tyrosine-protein kinase ZAP-70	0.59
P46781	RS9	40S ribosomal protein S9	0.59
Q8TAF3	WDR48	WD repeat-containing protein 48	0.60
Q8N4H5	TOM5	Mitochondrial import receptor subunit TOM5 homolog	0.60
P08729	K2C7	Keratin, type II cytoskeletal 7	0.61
Q07020	RL18	60S ribosomal protein L18	0.62
Q9BRX8	F213A	Redox-regulatory protein FAM213A	0.62
P07197	NFM	Neurofilament medium polypeptide	0.62
P15954	COX7C	Cytochrome c oxidase subunit 7C, mitochondrial	0.62

(continued on next page)

Table 2 (continued)

Protein ID	Alternative name	Protein name	iTRAQ ratio
P01861	IGHG4	Immunoglobulin heavy constant gamma 4	0.64
P61313	RL15	60S ribosomal protein L15	0.64
Q96SI1	KCD15	BTB/POZ domain-containing protein KCTD15	0.65
P07196	NFL	Neurofilament light polypeptide	0.65
Q3SX64	OD3L2	Outer dense fiber protein 3-like protein 2	0.65
Q02543	RL18A	60S ribosomal protein L18a	0.65
Q8NGY6	OR6N2	Olfactory receptor 6N2	0.66

Sunderam et al., 2019). After the implementation of blastocyst transplantation, the clinical pregnancy rate increased to 60.4% (*Ozgun et al., 2018*). RIF is the key factor affecting the pregnancy rate in IVF. Embryo quality, uterine factors (uterine cavity lesions, adenomyosis, endometrial receptivity, etc.), immune factors (embryo immunity, maternal immunity), and a multifactor effect could all lead to RIF but inadequate endometrial receptivity is the major cause of decreased pregnancy success in RIF patients. We collected the endometrium of IVF-ET patients during WOI and divided the samples into the RIF group and pregnant control group according to pregnancy outcomes. Specific proteins related to endometrial receptivity were screened using iTRAQ-2D LC-MS/MS.

Through iTRAQ-2D LC-MS/MS and bioinformatics analysis, 82 differential proteins were obtained in the endometrium of RIF patients during the WOI, of which 55 were higher (>1.50 times, $P < 0.05$) in RIF patients and 27 were lower (< 0.67 times, $P < 0.05$) in RIF patients. The differential proteins obtained in this study have also been identified in the early proteomic studies. Hannan et al. obtained seven differential proteins of the uterine lavage fluid of pregnant/non-pregnant patients in the WOI by 2D-DiGE. The antithrombin III (ANT3, P01008) was significantly increased in non-pregnant patients by immunohistochemistry (*Hannan et al., 2010*). We found that the expression of ANT3 was 1.77 times as much as that in the pregnant group, which was similar to previous results, indicating the reliability of iTRAQ-2D LC-MS/MS. The results for ANT3, alpha-1-acid glycoprotein 1 (P02763), vitamin D-binding protein (P02774), and FETUA (P02765) were also consistent with previous studies on the menstrual phase (*DeSouza et al., 2005*). Ribosomal proteins and apolipoproteins have also been identified in ours and other previous studies (*DeSouza et al., 2005; Domínguez et al., 2009; Pérez-Debén et al., 2019*).

The differentially expressed proteins were related to the immune system and primary immunodeficiency revealing by KEGG analysis and KEGG enrichment analysis (Figs. 3A, 3B). Therefore, the change of immune response in RIF patients is self-evident. It has been shown that the abnormal and functional defects of immune cells and molecules in endometrium during implantation can lead to pregnancy failure (*Liu et al., 2016*). Therefore, we suspect that the change of the endometrial immune microenvironment may lead to RIF, and may lead to a better clinical treatment for RIF patients.

Our study revealed that most of the differentially expressed proteins were annotated with “posttranslational modification, protein turnover, chaperones” and “translation, ribosomal structure and biogenesis function” based on the EggNOG database, except for

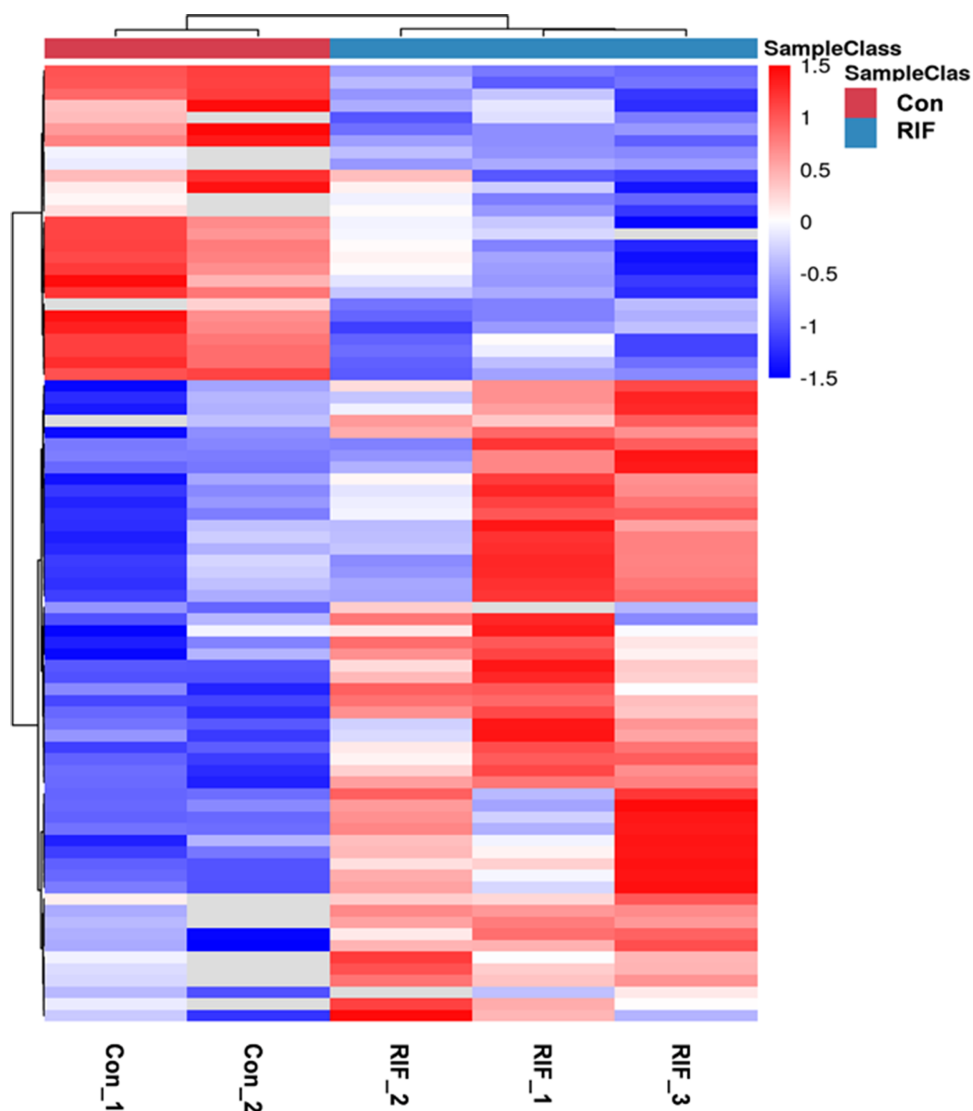


Figure 2 The hierarchical clustering for endometrium proteins between repeated implantation failure (RIF) and pregnant controls (Con) groups. The red color showed the up-regulated expression, and the blue color represented the down-regulated expression. The color from red/blue to white represented the ratio from large to small.

Full-size DOI: 10.7717/peerj.11009/fig-2

those with “function unknown”. So, we have reason to believe that modification after translation, synthesis and degradation, folding, maintenance, intracellular transport, and mRNA translation might be the key functions changed in embryo implantation. The results of enriched KEGG and String analysis in our study also confirmed that translation was impacted.

The proteins in the most significantly enriched GOs contained ANT3 and FETUA, which was consistent with results from previous studies (*DeSouza et al., 2005; Hannan et al., 2010*). ANT3 was also related to the immune system as highlighted in the KEGG analysis. These proteins were selected as candidates for validation. Protein was also selected

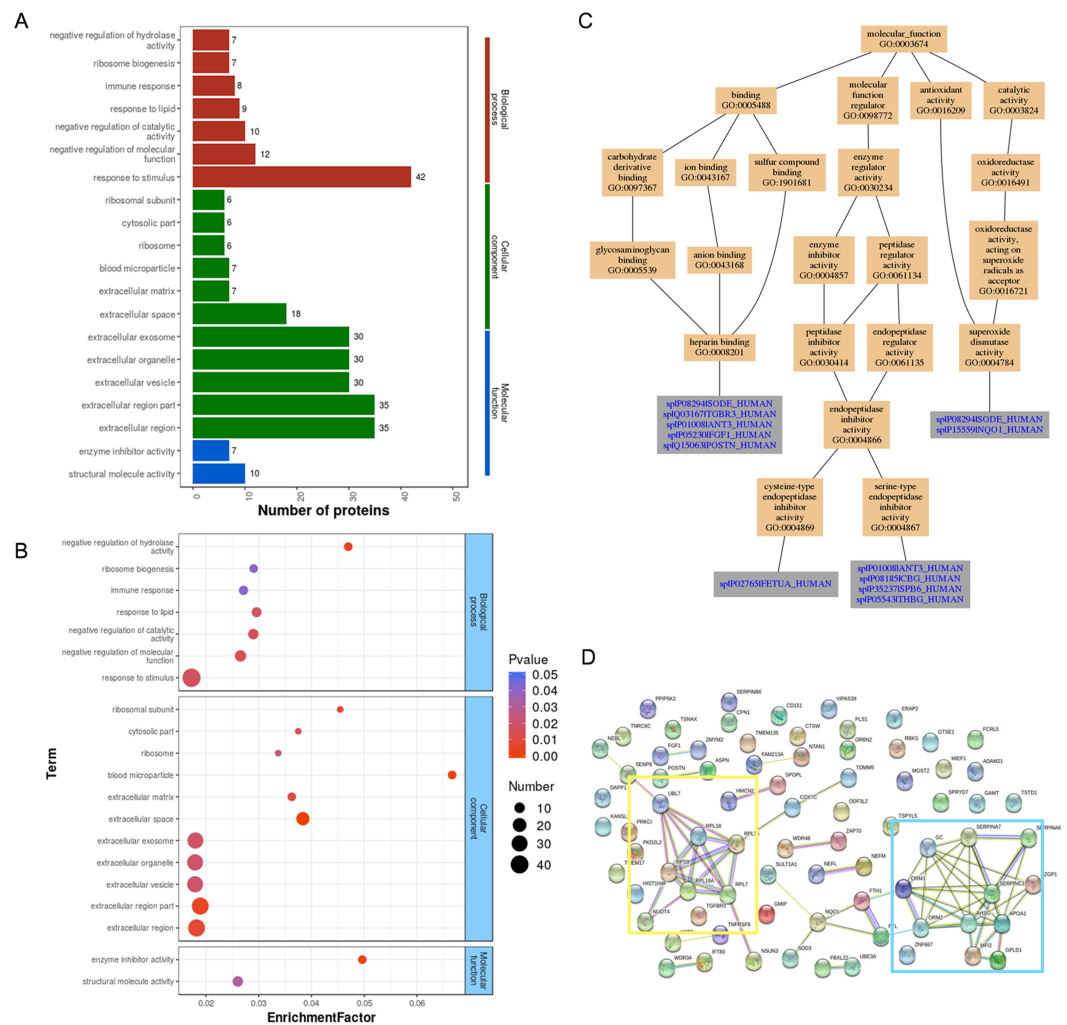


Figure 3 GO analysis and String analysis of the set of endometrium proteins biomarker candidates for repeated implantation failure. (A) GO analysis of 82 differentially expressed proteins revealed seven significant GO terms in biological process, 11 significant GO terms in cellular component, and two significant GO terms in molecular function ($P < 0.05$). (B) The enrichment analysis revealed 20 significant GO terms by hypergeometric test ($P < 0.05$). GO terms with bigger enrichment factor indicate the greater degree of enrichment. (C) Molecular function of GO terms for proteins identified both in our and prior studies. (D) Network nodes represent proteins while edges represent protein-protein associations which were already known (light blue and purple) or predicted (other colors) by String analysis. Proteins enclosed in color-coded outlines are mainly involved in ribosomal proteins (yellow) and blood homeostasis proteins (blue).

Full-size DOI: 10.7717/peerj.11009/fig-3

based on a review of the literature as CBG. *Misao et al. (1995)* suggested that the decrease of progesterone level in the blood can lead to an increased CBG expression level in the endometrium. Low progesterone levels may lead to higher miscarriage rates and lower live birth rates in frozen embryo transfer patients (*Gaggiotti-Marre et al., 2019*).

Antithrombin-III is a representative protein of the prethrombotic state, which is encoded by *ANT3*. The prethrombotic state is thought to be a major cause of RIF (*Qublan*

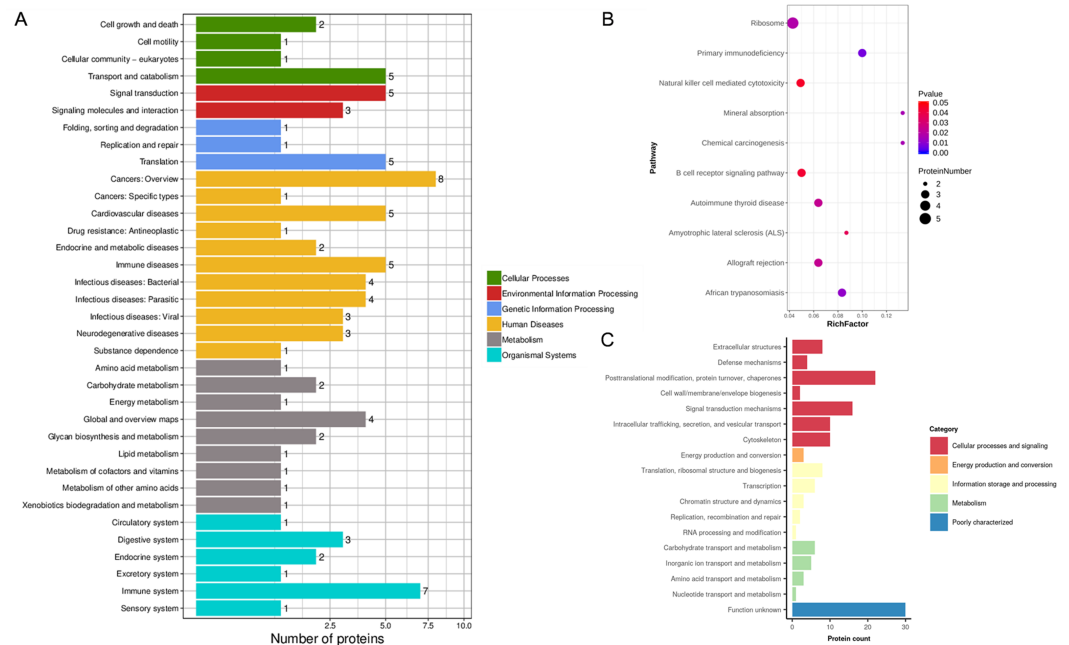


Figure 4 KEGG analysis and EggNOG analysis of the set of endometrium proteins biomarker candidates for repeated implantation failure. (A) KEGG pathway analysis of 82 differentially expressed proteins using KEGG database revealed 35 pathways. (B) The enrichment analysis of KEGG pathways revealed 10 significant pathways by hypergeometric test ($P < 0.05$). Pathways with bigger rich factor indicate the greater degree of enrichment. (C) EggNOG analysis predicted pairwise orthology and functional classification for 82 differentially expressed proteins.

Full-size [DOI: 10.7717/peerj.11009/fig-4](https://doi.org/10.7717/peerj.11009/fig-4)

et al., 2006). Our proteomics results corroborated those of *Hannan et al. (2010)*, which revealed up-regulated levels of antithrombin III in non-pregnant patients (*Hannan et al., 2010*). However, antithrombin III showed no significant difference in RIF patients and pregnant controls. These differences may be due to the differences in the validation tests used. We used the quantitative Western-blot for validation while Hannan et al. used immunohistochemical localization. Therefore, antithrombin III may not change in RIF patients.

Corticosteroid-binding globulin was a multifaceted component in cortisol delivery, also in acute and chronic inflammation, and metabolism and neurocognitive function (*Meyer et al., 2016*). The increased CBG level during pregnancy was important at the materno-fetal interface (*Lei et al., 2015*). We found significantly higher levels of CBG in RIF patients (*Fig. 4*). *Misao et al. (1995)* suggested that the decrease of progesterone levels in the blood may increase CBG expression in the endometrium. However, we found a lower level of serum progesterone in RIF patients, but the difference was not significant (*Table 1*) and a larger sample of research may be needed. The endometrial CBG content is thought to originate in the plasma (*Kreitmann, Derache & Bayard, 1978*), thus, RIF patients may have a positive outcome with supplemental progesterone administration.

Fetuin-A is defined as the inhibitor of ectopic calcification in circulation, which also takes part in multiple metabolic pathways such as insulin resistance, vascular calcification,

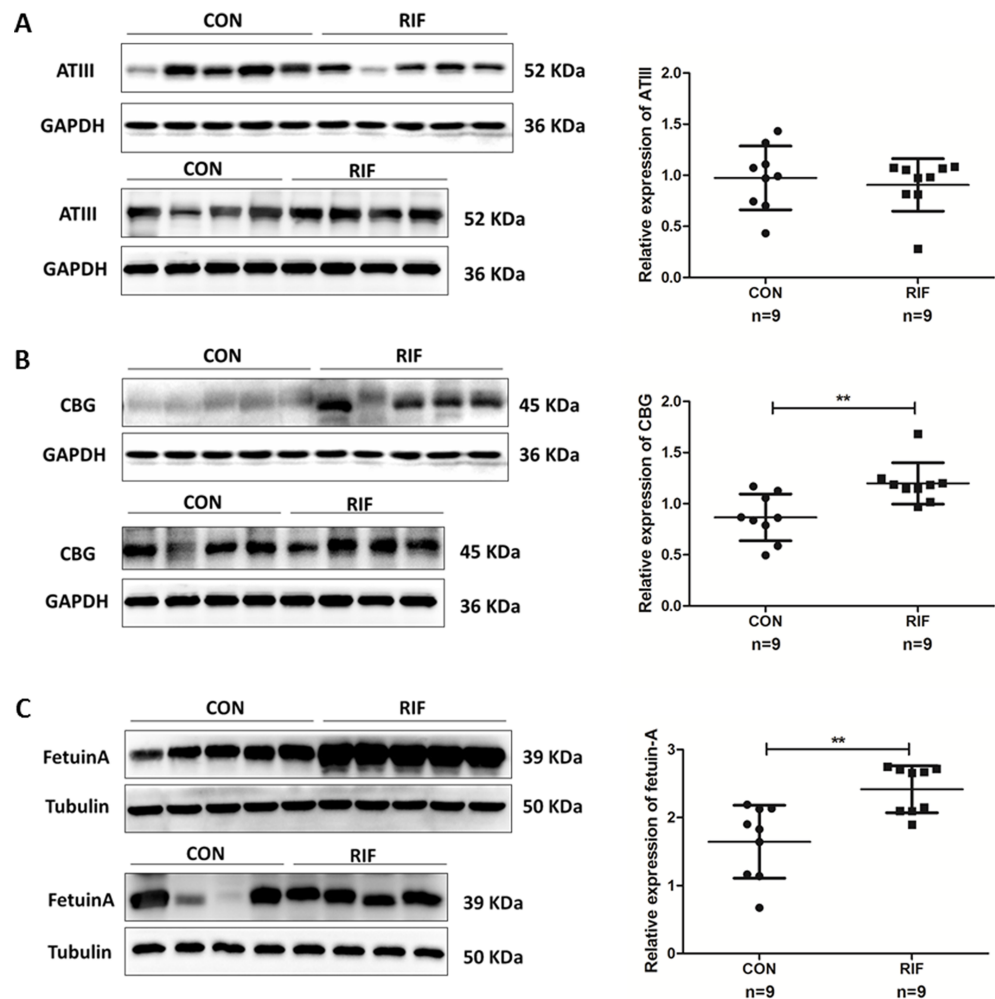


Figure 5 Proteins expression levels change between repeated implantation failure (RIF) and pregnant controls (CON). (A) antithrombin III (ATIII) (52 KDa); (B) corticosteroid-binding globulin (CBG) (45 KDa); and (C) fetuin-A (39 KDa) were analyzed by western-blot in nine cases of pregnant controls (CON) and repeated implantation failure (RIF) patients. Beside each western-blot picture, grayscale analysis is represented where the intensity of each protein band is compared to a GAPDH/tubulin band. Grayscale analysis showed a similar tendency to the iTRAQ analysis, with a higher protein abundance of CBG in RIF cases (1.39 fold, $P = 0.003$), also higher fetuin-A (1.47 fold, $P = 0.002$).

Full-size [DOI: 10.7717/peerj.11009/fig-5](https://doi.org/10.7717/peerj.11009/fig-5)

and inflammation (Bilgic et al., 2010; Ishibashi et al., 2010; Wang & Sama, 2012). Fetuin-A is also popular in studies on adverse pregnancy outcomes like pre-eclampsia (Sanhal et al., 2016) and gestational diabetes mellitus (Kansu-Celik et al., 2019). A previous study on pre-eclampsia concluded that fetuin-A may decrease trophoblast viability and invasion caused by the inhibition of receptor tyrosine kinase activity (Gomez et al., 2012). Our study supported the results that showed that elevated fetuin-A may lead to failed implantation and cause an adverse pregnancy outcome. Meanwhile, Ozgu-Erdinc et al. (2020) demonstrated that serum fetuin-A level were also increased in implantation failure patients in IVF cycles.

Additional studies on the regulation of the level of fetuin-A as a treatment strategy may improve implantation success.

CONCLUSIONS

We screened the endometrial proteomics of RIF patients using iTRAQ-2D LC-MS/MS at WOI, revealing that the endometrial immune microenvironment may lead to RIF. Our validated results confirmed CBG and fetuin-A as the specific protein for RIF patients. Our results provide experimental data to establish the objective indicator of endometrial receptivity and give a new insight into the pathogenesis of RIF.

ACKNOWLEDGEMENTS

We wish to thank the patients who participated in our study.

ADDITIONAL INFORMATION AND DECLARATIONS

Funding

This work was supported by the Medicine and Health Science Technology Project of Zhejiang province, China (Grant number 2017KY550) and the Zhejiang Provincial Natural Science Foundation of China (grant number LQ18H040009). The funders had no role in study design, data collection and analysis, decision to publish, or preparation of the manuscript.

Grant Disclosures

The following grant information was disclosed by the authors:

The Medicine and Health Science Technology Project of Zhejiang Province, China: 2017KY550.

The Zhejiang Provincial Natural Science Foundation of China: LQ18H040009.

Competing Interests

The authors declare there are no competing interests.

Author Contributions

- Chong Wang conceived and designed the experiments, analyzed the data, authored or reviewed drafts of the paper, and approved the final draft.
- Ying Feng and Wen-Jing Zhou analyzed the data, prepared figures and/or tables, and approved the final draft.
- Zhao-Jun Cheng performed the experiments, analyzed the data, prepared figures and/or tables, and approved the final draft.
- Mei-Yan Jiang and Yan Zhou performed the experiments, prepared figures and/or tables, and approved the final draft.
- Xiao-Yang Fei conceived and designed the experiments, authored or reviewed drafts of the paper, and approved the final draft.

Human Ethics

The following information was supplied relating to ethical approvals (i.e., approving body and any reference numbers):

This study was approved by the Ethics Committee of the Faculty of Medicine (Hangzhou Women's Hospital, China) (Ethical Application Ref: 2016001-10).

Data Availability

The following information was supplied regarding data availability:

Data is available at ProteomeXchange Consortium (<http://proteomecentral.proteomexchange.org>) via the iProX partner repository, accession numbers: PXD021068 .

Clinical data are available in the [Supplemental File](#).

Supplemental Information

Supplemental information for this article can be found online at <http://dx.doi.org/10.7717/peerj.11009#supplemental-information>.

REFERENCES

- Acosta AA, Elberger L, Borghi M, Calamera JC, Chemes H, Doncel GF, Kliman H, Lema B, Lustig L, Papier S. 2000. Endometrial dating and determination of the window of implantation in healthy fertile women. *Fertility and Sterility* 73(4):788–798 DOI 10.1016/S0015-0282(99)00605-6.
- Bilgir O, Kebapcilar L, Bilgir F, Bozkaya G, Yildiz Y, Pinar P, Tastan A. 2010. Decreased serum fetuin-A levels are associated with coronary artery diseases. *Internal Medicine* 49(13):1281–1285 DOI 10.2169/internalmedicine.49.3223.
- Bissonnette L, Drissenek L, Antoine Y, Tiers L, Hirtz C, Lehmann S, Perrochia H, Bissonnette F, Kadoch IJ, Haouzi D, Hamamah S. 2016. Human S100A10 plays a crucial role in the acquisition of the endometrial receptivity phenotype. *Cell Adhesion and Migration* 10(3):282–298 DOI 10.1080/19336918.2015.1128623.
- Chen JI, Hannan NJ, Mak Y, Nicholls PK, Zhang J, Rainczuk A, Stanton PG, Robertson DM, Salamonsen LA, Stephens AN. 2009. Proteomic characterization of midproliferative and midsecretory human endometrium. *Journal of Proteome Research* 8(4):2032–2044 DOI 10.1021/pr801024g.
- DeSouza L, Diehl G, Yang EC, Guo J, Rodrigues MJ, Romaschin AD, Colgan TJ, Siu KW. 2005. Proteomic analysis of the proliferative and secretory phases of the human endometrium: protein identification and differential protein expression. *Proteomics* 5(1):270–281 DOI 10.1002/pmic.200400920.
- Domínguez F, Garrido-Gómez T, López JA, Camafeita E, Quiñonero A, Pellicer A, Simón C. 2009. Proteomic analysis of the human receptive versus non-receptive endometrium using differential in-gel electrophoresis and MALDI-MS unveils stathmin 1 and annexin A2 as differentially regulated. *Human Reproduction* 24(10):2607–2617 DOI 10.1093/humrep/dep230.
- European IVF-Monitoring Consortium (EIM) for the European Society of Human Reproduction and Embryology ESHRE, Calhaz-Jorge C, Geyter Cde, Kupka MS,

- Mouzon Jde, Erb K, Mocanu E, Motrenko T, Scaravelli G, Wyns C, Goossens V. 2016.** Assisted reproductive technology in Europe, 2012: results generated from European registers by ESHRE. *Human Reproduction* **31**(8):1638–1652 DOI [10.1093/humrep/dew151](https://doi.org/10.1093/humrep/dew151).
- Fan L, Wang L, Wang Z. 2019.** Proteomic characterization of the hepatopancreas in the Pacific white shrimp *Litopenaeus vannamei* under cold stress: revealing the organism homeostasis mechanism. *Fish and Shellfish Immunology* **92**:438–449 DOI [10.1016/j.fsi.2019.06.037](https://doi.org/10.1016/j.fsi.2019.06.037).
- Gaggiotti-Marre S, Martinez F, Coll L, Garcia S, Álvarez M, Parriego M, Barri PN, Polyzos N, Coroleu B. 2019.** Low serum progesterone the day prior to frozen embryo transfer of euploid embryos is associated with significant reduction in live birth rates. *Gynecological Endocrinology* **35**(5):439–442 DOI [10.1080/09513590.2018.1534952](https://doi.org/10.1080/09513590.2018.1534952).
- Gardner DK, Schoolcraft WB, Wagley L, Schlenker T, Stevens J, Hesla J. 1998.** A prospective randomized trial of blastocyst culture and transfer in in vitro fertilization. *Human Reproduction* **13**(12):3434–3440 DOI [10.1093/humrep/13.12.3434](https://doi.org/10.1093/humrep/13.12.3434).
- Gomez LM, Anton L, Srinivas SK, Elovitz MA, Parry S. 2012.** Effects of increased fetuin-A in human trophoblast cells and associated pregnancy outcomes. *American Journal of Obstetrics and Gynecology* **207**(6):484.e1–484.e8 DOI [10.1016/j.ajog.2012.10.872](https://doi.org/10.1016/j.ajog.2012.10.872).
- Hannan NJ, Stephens AN, Rainczuk A, Hincks C, Rombauts LJ, Salamonsen LA. 2010.** 2D-DiGE analysis of the human endometrial secretome reveals differences between receptive and nonreceptive states in fertile and infertile women. *Journal of Proteome Research* **9**(12):6256–6264 DOI [10.1021/pr1004828](https://doi.org/10.1021/pr1004828).
- Huerta-Cepas J, Szklarczyk D, Forslund K, Cook H, Heller D, Walter MC, Rattei T, Mende DR, Sunagawa S, Kuhn M, Jensen LJ, Mering Cvon, Bork P. 2015.** egglog 4.5: a hierarchical orthology framework with improved functional annotations for eukaryotic, prokaryotic and viral sequences. *Nucleic Acids Research* **44**(D1):D286–D293.
- Ishibashi A, Ikeda Y, Ohguro T, Kumon Y, Yamanaka S, Takata H, Inoue M, Suehiro T, Terada Y. 2010.** Serum fetuin-A is an independent marker of insulin resistance in Japanese men. *Journal of Atherosclerosis and Thrombosis* **17**(9):925–933 DOI [10.5551/jat.3830](https://doi.org/10.5551/jat.3830).
- Kanehisa M, Araki M, Goto S, Hattori M, Hirakawa M, Itoh M, Katayama T, Kawashima S, Okuda S, Tokimatsu T, Yamanishi Y. 2007.** KEGG for linking genomes to life and the environment. *Nucleic Acids Research* **36**(suppl_1):D480–D484 DOI [10.1093/nar/gkm882](https://doi.org/10.1093/nar/gkm882).
- Kansu-Celik H, Ozgu-Erdinc AS, Kisa B, Findik RB, Yilmaz C, Tasci Y. 2019.** Prediction of gestational diabetes mellitus in the first trimester: comparison of maternal fetuin-A, N-terminal proatrial natriuretic peptide, high-sensitivity C-reactive protein, and fasting glucose levels. *Archives of Endocrinology and Metabolism* **63**(2):121–127.
- Kreitmann B, Derache B, Bayard F. 1978.** Measurement of the corticosteroid-binding globulin, progesterone, and progesterone receptor content in human endometrium. *The Journal of Clinical Endocrinology and Metabolism* **47**(2):350–353 DOI [10.1210/jcem-47-2-350](https://doi.org/10.1210/jcem-47-2-350).

- Kushnir VA, Barad DH, Albertini DF, Darmon SK, Gleicher N. 2017. Systematic review of worldwide trends in assisted reproductive technology 2004–2013. *Reproductive Biology & Endocrinology* 15(1):6 DOI 10.1186/s12958-016-0225-2.
- Lei JH, Yang X, Peng S, Li Y, Underhill C, Zhu C, Lin HY, Wang H, Hammond GL. 2015. Impact of corticosteroid-binding globulin deficiency on pregnancy and neonatal sex. *The Journal of Clinical Endocrinology and Metabolism* 100(5):1819–1827 DOI 10.1210/jc.2014-4254.
- Liu L, Li FG, Yang M, Wang L, Chen Y, Wang L, Ji W, Fan JM. 2016. Effect of pro-inflammatory interleukin-17A on epithelial cell phenotype inversion in HK-2 cells in vitro. *European Cytokine Network* 27(2):27–33 DOI 10.1684/ecn.2016.0373.
- Margalioth EJ, Ben-Chetrit A, Gal M, Eldar-Geva T. 2006. Investigation and treatment of repeated implantation failure following IVF-ET. *Human Reproduction* 21(12):3036–3043 DOI 10.1093/humrep/del305.
- Mascarenhas MN, Flaxman SR, Boerma T, Vanderpoel S, Stevens GA. 2012. National, regional, and global trends in infertility prevalence since 1990: a systematic analysis of 277 health surveys. *PLOS Medicine* 9(12):e1001356 DOI 10.1371/journal.pmed.1001356.
- Meyer EJ, Nenke MA, Rankin W, Lewis JG, Torpy DJ. 2016. Corticosteroid-binding globulin: a review of basic and clinical advances. *Hormone and Metabolic Research* 48(6):359–371 DOI 10.1055/s-0042-108071.
- Misao R, Nakanishi Y, Fujimoto J, Tamaya T. 1995. Sex hormone-binding globulin and corticosteroid-binding globulin mRNA levels in infertile women with luteal phase deficiency. *Gynecological Endocrinology* 9(3):195–200 DOI 10.3109/09513599509160446.
- Ozgu-Erdinc AS, Oskovi-Kaplan ZA, Engin-Ustun Y, Caglayan EKiyak, Yilmaz S, Yilmaz N, Gocmen AY, Erkaya S, Delibas N. 2020. Recurrent implantation failure is associated with increased levels of fetuin-A/alpha2-Heremans-Schmid-glycoprotein. *European Journal of Obstetrics, Gynecology, and Reproductive Biology* 248:1–4 DOI 10.1016/j.ejogrb.2020.03.005.
- Ozgur K, Bulut H, Berkkanoglu M, Humaidan P, Coetzee K. 2018. Artificial cryopreserved embryo transfer cycle success depends on blastocyst developmental rate and progesterone timing. *Reproductive Biomedicine Online* 36(3):269–276 DOI 10.1016/j.rbmo.2017.12.009.
- Parmar T, Gadkar-Sable S, Savardekar L, Katkam R, Dharma S, Meherji P, Puri CP, Sachdeva G. 2009. Protein profiling of human endometrial tissues in the midsecretory and proliferative phases of the menstrual cycle. *Fertility and Sterility* 92(3):1091–1103 DOI 10.1016/j.fertnstert.2008.07.1734.
- Pérez-Deben S, Bellver J, Alamá P, Salsano S, Quiñero A, Sebastian-Leon P, Díaz-Gimeno P, Domínguez F. 2019. iTRAQ comparison of proteomic profiles of endometrial receptivity. *Journal of Proteomics* 203:103381 DOI 10.1016/j.jprot.2019.103381.
- Qublan HS, Eid SS, Ababneh HA, Amarin ZO, Smadi AZ, Al-Khafaji FF, Khader YS. 2006. Acquired and inherited thrombophilia: implication in recurrent

- IVF and embryo transfer failure. *Human Reproduction* **21**(10):2694–2698
DOI [10.1093/humrep/del203](https://doi.org/10.1093/humrep/del203).
- Rai P, Kota V, Sundaram CS, Deendayal M, Shivaji S. 2010.** Proteome of human endometrium: Identification of differentially expressed proteins in proliferative and secretory phase endometrium. *Proteomics Clinical Applications* **4**(1):48–59
DOI [10.1002/prca.200900094](https://doi.org/10.1002/prca.200900094).
- Ruiz-Alonso M, Blesa D, Díaz-Gimeno P, Gómez E, Fernández-Sánchez M, Carranza F, Carrera J, Vilella F, Pellicer A, Simón C. 2013.** The endometrial receptivity array for diagnosis and personalized embryo transfer as a treatment for patients with repeated implantation failure. *Fertility and Sterility* **100**(3):818–824
DOI [10.1016/j.fertnstert.2013.05.004](https://doi.org/10.1016/j.fertnstert.2013.05.004).
- Ruiz-Alonso M, Blesa D, Simón C. 2012.** The genomics of the human endometrium. *BBA Molecular Basis of Disease* **1822**:1931–1942 DOI [10.1016/j.bbadis.2012.05.004](https://doi.org/10.1016/j.bbadis.2012.05.004).
- Sanhal CY, Kavcar M, Can Y, Yucel A, Erkenekli K, Erkaya S, Uygur D. 2016.** Comparison of plasma fetuin A levels in patients with early-onset pre-eclampsia vs late-onset pre-eclampsia. *European Journal of Obstetrics, Gynecology, and Reproductive Biology* **200**:108–112 DOI [10.1016/j.ejogrb.2016.03.011](https://doi.org/10.1016/j.ejogrb.2016.03.011).
- Sunderam S, Kissin DM, Zhang Y, Folger SG, Boulet SL, Warner L, Callaghan WM, Barfield WD. 2019.** Assisted reproductive technology surveillance - United States, 2016. Morbidity and mortality weekly report. *Surveillance Summaries* **68**(4):1–23.
- Wang H, Sama AE. 2012.** Anti-inflammatory role of fetuin-A in injury and infection. *Current Molecular Medicine* **12**(5):625–633 DOI [10.2174/156652412800620039](https://doi.org/10.2174/156652412800620039).
- Wen B, Du C, Li G, Ghali F, Jones AR, Käll L, Xu S, Zhou R, Ren Z, Feng Q, Xu X, Wang J. 2015.** IPeak: an open source tool to combine results from multiple MS/MS search engines. *Proteomics* **15**(17):2916–2920 DOI [10.1002/pmic.201400208](https://doi.org/10.1002/pmic.201400208).
- Wen B, Zhou R, Feng Q, Wang Q, Wang J, Liu S. 2014.** IQuant: an automated pipeline for quantitative proteomics based upon isobaric tags. *Proteomics* **14**(20):2280–2285 DOI [10.1002/pmic.201300361](https://doi.org/10.1002/pmic.201300361).
- Yap J, Foo CF, Lee MY, Stanton PG, Dimitriadis E. 2011.** Proteomic analysis identifies interleukin 11 regulated plasma membrane proteins in human endometrial epithelial cells in vitro. *Reproductive Biology & Endocrinology* **9**(1):1–15
DOI [10.1186/1477-7827-9-1](https://doi.org/10.1186/1477-7827-9-1).
- Zhou Z, Zheng D, Wu H, Li R, Xu S, Kang Y, Cao Y, Chen X, Zhu Y, Xu S, Chen ZJ, Mol BW, Qiao J. 2018.** Epidemiology of infertility in China: a population-based study. *BJOG: An International Journal of Obstetrics & Gynaecology* **125**(4):432–441
DOI [10.1111/1471-0528.14966](https://doi.org/10.1111/1471-0528.14966).