

Article

Yeast GH30 Xylanase from *Sugiyamaella lignohabitans* Is a Glucuronoxylanase with Auxiliary Xylobiohydrolase Activity §

Katarína Šuchová ^{1,*} , Andrej Chyba ¹, Zuzana Hegyi ² , Martin Rebroš ² and Vladimír Puchart ¹ 

¹ Institute of Chemistry, Slovak Academy of Sciences, Dúbravská Cesta 9, 845 38 Bratislava, Slovakia; Andrej.Chyba@savba.sk (A.C.); Vladimír.Puchart@savba.sk (V.P.)

² Institute of Biotechnology, Faculty of Chemical and Food Technology, Slovak University of Technology in Bratislava, Radlinského 9, 812 37 Bratislava, Slovakia; zuzana.hegyi@stuba.sk (Z.H.); martin.rebroš@stuba.sk (M.R.)

* Correspondence: Katarina.Suchova@savba.sk; Tel.: +421-2-59410229

§ This article is dedicated to Peter Biely on the occasion of his 80th birthday. As a discoverer of several novel xylanolytic enzymes he significantly contributed to the area of enzymatic degradation of hemicellulose.

Abstract: Xylanases are the enzymes that catalyze the breakdown of the main hemicellulose present in plant cell walls. They have attracted attention due to their biotechnological potential for the preparation of industrially interesting products from lignocellulose. While many xylanases have been characterized from bacteria and filamentous fungi, information on yeast xylanases is scarce and no yeast xylanase belonging to glycoside hydrolase (GH) family 30 has been described so far. Here, we cloned, expressed and characterized GH30 xylanase *SIXyn30A* from the yeast *Sugiyamaella lignohabitans*. The enzyme is active on glucuronoxylan (8.4 U/mg) and rhodymenan (linear β -1,4-1,3-xylan) (3.1 U/mg) while its activity on arabinoxylan is very low (0.03 U/mg). From glucuronoxylan *SIXyn30A* releases a series of acidic xylooligosaccharides of general formula MeGlcA²Xyl_n. These products, which are typical for GH30-specific glucuronoxylanases, are subsequently shortened at the non-reducing end, from which xylobiose moieties are liberated. Xylobiohydrolase activity was also observed during the hydrolysis of various xylooligosaccharides. *SIXyn30A* thus expands the group of glucuronoxylanases/xylobiohydrolases which has been hitherto represented only by several fungal GH30-7 members.

Keywords: xylanase; glucuronoxylanase; xylobiohydrolase; xylan; glycoside hydrolase family 30; GH30-7 subfamily; *Sugiyamaella lignohabitans*; yeast



Citation: Šuchová, K.; Chyba, A.; Hegyi, Z.; Rebroš, M.; Puchart, V. Yeast GH30 Xylanase from *Sugiyamaella lignohabitans* Is a Glucuronoxylanase with Auxiliary Xylobiohydrolase Activity. *Molecules* **2022**, *27*, 751. <https://doi.org/10.3390/molecules27030751>

Academic Editors: Maria Hrmova, Paul Christakopoulos, Francisco I. Javier Pastor and Evangelos Topakas

Received: 30 December 2021

Accepted: 21 January 2022

Published: 25 January 2022

Publisher's Note: MDPI stays neutral with regard to jurisdictional claims in published maps and institutional affiliations.



Copyright: © 2022 by the authors. Licensee MDPI, Basel, Switzerland. This article is an open access article distributed under the terms and conditions of the Creative Commons Attribution (CC BY) license (<https://creativecommons.org/licenses/by/4.0/>).

1. Introduction

Endo- β -1,4-xylanases (EXs, EC 3.2.1.8) are main xylan depolymerizing enzymes cleaving the polysaccharide backbone to xylooligosaccharides (XOs) of various lengths. Most EXs are classified in glycoside hydrolase (GH) families 10 and 11 (www.cazy.org, accessed on 1 December 2021) [1]; however, they are also found in GH families 5, 8, 30, 43, 98 and 141. During the last few years, great attention has been paid to the EXs from GH30 family [2–13]. Prokaryotic EXs are grouped into subfamily GH30-8, while eukaryotic xylanases are members of GH30-7 subfamily. Catalytic properties of the GH30-8 subfamily enzymes are quite uniform and most of them are specific glucuronoxylanases (EC 3.2.1.136) requiring glucuronic or 4-O-methyl-glucuronic acid (MeGlcA) substitution of the main chain for their action [13–15]. On the other hand, catalytic properties of the GH30-7 subfamily representatives are diverse and include specific glucuronoxylanases, xylobiohydrolases, non-specific endoxylanases, endoxylanases/xylobiohydrolases and xylanases releasing xylose from the reducing end of the substrate [11,12]. All characterized GH30-7 xylanases come from filamentous fungi and so far no yeast GH30 EX has been described.

Compared to bacterial and fungal xylanases, yeast xylanases have not been studied so extensively, presumably due to much lower levels of xylanase production by the yeasts. The

best characterized yeast xylanases are from yeast-like fungus *Aureobasidium pullulans* [16,17] and from several *Cryptococcus* species [18–20], but EXs were purified and characterized also from *Pichia* (*Scheffersomyces*), *Pseudozyma* and *Blastobotrys* genera [21–23]. All of them belong to either the GH10 or GH11 family. Bioinformatic mining in 332 yeast genomes from the phylum *Ascomycota* has revealed only a few putative yeast xylanases: one from the GH11 family (*Blastobotrys mokoanii*), five from the GH10 family (two from *Spencermartinsiella europaea*, two from *Sugiyamaella lignohabitans* and one from *B. peoriensis*) and three from the GH30-7 subfamily (*Sp. europaea*, *Su lignohabitans*, *B. mokoanii*) [23].

The genus *Sugiyamaella*, which belongs to the family *Trichomonascaceae*, was established by Kurtzman and Robnett [24]. The members of *Sugiyamaella* clade are mostly found in a wood environment. *Sugiyamaella* (*Candida*) *lignohabitans* strains were isolated from tenebrionid beetles inhabiting a rotten log or from decayed wood [25]. A total of 16 yeast isolates belonging to the genus *Sugiyamaella* recovered from rotting wood and sugarcane bagasse samples in different Brazilian regions were studied in relation to D-xylose fermentation, xylitol production, and xylanase activities [26]. All of them exhibited xylanase activity and almost all were able to produce ethanol and xylitol. Among them, *S. lignohabitans* exhibited the highest xylanase activity and the best xylitol yield and productivity after 24 h [26]. This yeast has been also described as a host for the production of organic acids from lignocellulosic hydrolysates [27]. Yeast strains able to degrade polysaccharides and simultaneously convert their constituents to desired products are interesting for possible applications in lignocellulosic biorefining.

To expand the knowledge on yeast xylanases, we have cloned, expressed and characterized GH30 xylanase *SIXyn30A* from *S. lignohabitans*. It was found to be a glucuronoxylanase with auxiliary xylobiohydrolase activity.

2. Results

2.1. Sequence Analysis of *SIXyn30A*

SIXyn30A (GenBank: ANB12318) is composed of 470 amino acids, including signal peptide which is 16 amino acids long. The mature protein has a theoretical molecular mass of 49,539 Da. BLAST search (<https://blast.ncbi.nlm.nih.gov/Blast.cgi>, accessed on 2 November 2021) showed the highest similarity (68.4%, identity 53.7%) to a putative GH30 xylanase from *Lineolata rhizophorae* (GenBank: KAF2460202.1). Of the characterized GH30 enzymes, *SIXyn30A* showed the highest similarity (65.9%) and identity (47.7%) to xylanase C from *Talaromyces purpureogenus*, but other hits showed a similar level of homology and identity: glucuronoxylanase/xylobiohydrolase *TtXyn30A* from *Thermothelomyces thermophila* (65.5% similarity, 47.5% identity), glucuronoxylanase/xylobiohydrolase *TcXyn30B* from *Talaromyces cellulolyticus* (63.4% similarity, 42.1% identity), xylanase *XylD* from *Bispora* (61.9% similarity, 42.7% identity), and glucuronoxylanase *TrXynVI* from *Trichoderma reesei* (59.7% similarity, 44.3% identity).

Based on amino acid sequence alignment (Figure S1, Supplementary Materials), two catalytic residues were identified: Glu199 as an acid/base and Glu292 as a nucleophile. The alignment also revealed that *SIXyn30A* displays structural features of the GH30-7 enzymes including a longer β 2- α 2 loop, a lack of α 6-helix, and a presence of β -strands β 8A and β 8B [12]. Moreover, *SIXyn30A* contains several structural elements typical for GH30-7 glucuronoxylanases/xylobiohydrolases (Figure 1). The first is a presence of Arg46 which was suggested to be responsible for a MeGlcA recognition and glucuronoxylanase activity of *TcXyn30B* [4]. Although the 3D structure of another GH30-7 glucuronoxylanase, *TtXyn30A*, did not confirm such a role of the arginine, mutational studies of *TtXyn30A* indicated its importance [9]. The second structural feature considered to be responsible for xylobiohydrolase activity is the length and amino acid sequence of the β 2- α 2 loop. This loop is of the same length in *SIXyn30A*, *TcXyn30B* and *TtXyn30A*, and is longer than in other GH30-7 enzymes (e.g., *TrXynVI*; Figure 1). Asn93 in *TcXyn30B* and Asp78 in *TtXyn30A* in this loop were shown to interact with *Xylp* residue accommodated in the $-2a$ subsite [4,9]. The corresponding residue in *SIXyn30A* is Asn90 which may play a similar role.

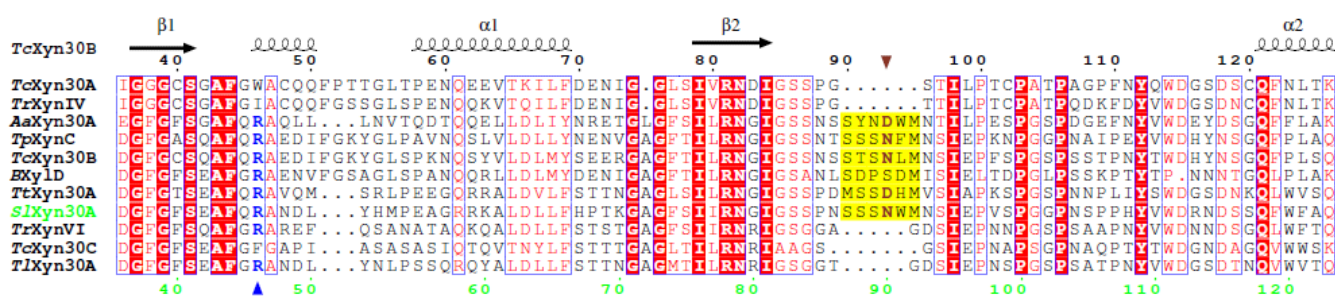


Figure 1. Amino acid sequence alignment of *SIXyn30A* with GH30-7 xylanases *Talaromyces cel-lulolyticus* *TcXyn30B* (GAM36763), *TcXyn30C* (GAM40414.1), *TcXyn30A* (GAM43270), *Thermothelomyces thermophila* *TrXyn30A* (AEO55025), *Talaromyces purpureogenus* (*Penicillium purpureogenum*) *TpXynC* (AKH40280), *Bispora* sp. *BXylD* (ADG62369.1), *Trichoderma reesei* *TrXynVI* (EGR45006.1), *T. reesei* *TrXynIV* (AAP64786.1), *Acremonium alcalophilum* *AaXyn30A* [7], and *Talaromyces leycettanus* *TlXyn30A* [10]. The secondary structure elements and numbering of *TcXyn30B* are shown on top, numbering of *SIXyn30A* is at the bottom. Arginine suggested to be responsible for the recognition of MeGlcA substitution is shown in blue and is marked by a blue up triangle. Longer β 2- α 2 loop in xylobiohydrolases is highlighted in yellow and the residue interacting with *Xylp* moiety occupying the $-2a$ subsite is brown and marked by a brown down triangle.

2.2. Recombinant Strain Selection

Four clones with integrated pPICZ α A vector carrying the *Slxyn30A* gene were selected from the ZeocinTM (250 mg/L) plate. The clones were individually cultivated in shake flasks, and after 120 h of induction, supernatant was screened by SDS-PAGE electrophoresis for the presence of 50 kDa protein which should correspond to a mature enzyme. The expected protein was confirmed in three transformants (Figure S2). The molecular mass of the enzyme was, however, a little bit higher (58 kDa), presumably due to glycosylation. According to NetNGlyc server, the amino acid sequence of *SIXyn30A* contains 4 potential N-glycosylation sites (N86, N114, N252, N306). The first one is conserved in *TcXyn30B* where is actually glycosylated [2]. Three transformants were then tested for xylanase activity and the transformant with the highest activity (transformant 4) was used for the determination of the catalytic properties of *SIXyn30A*.

2.3. Thermal and pH Optima and Stability

SIXyn30A showed a temperature optimum of 50 °C, showing 71% and 24% of maximal activity at 40 °C and 60 °C, respectively (Figure 2a). pH optimum was around 3.5 and the enzyme was active in acidic range of pH, keeping only 6.6% of the maximal activity at pH 6 (Figure 2b). The enzyme was stable at temperatures up to 50 °C, while at 60 °C it completely lost its activity within 30 min.

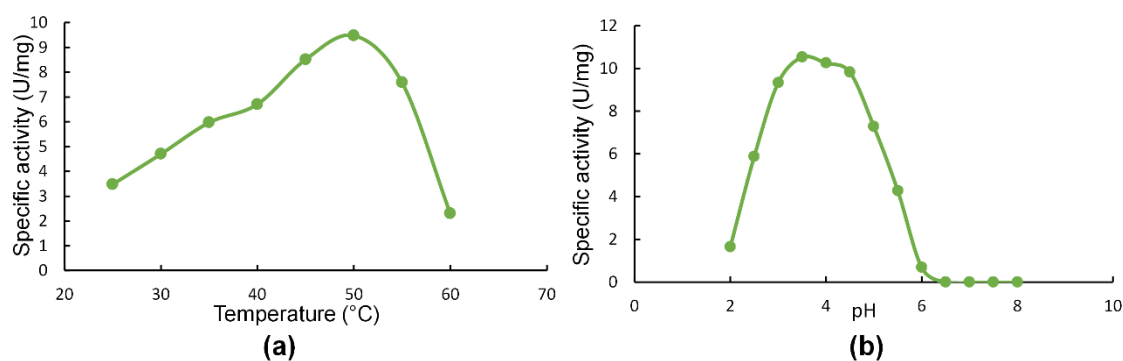


Figure 2. Effect of temperature (a) and pH (b) on activity of *SIXyn30A*.

2.4. Hydrolysis of Polysaccharides

SIXyn30A showed the highest specific activity on glucuronoxylan (GX) (8.4 U/mg), while activity on linear β -1,3,4-xylan (rhodymenan, Rho) was about 2.5 times lower (3.1 U/mg). Specific activity on arabinoxylan was extremely low (0.03 U/mg). TLC analysis of hydrolysis products showed that GX was initially cleaved to a series of acidic xylooligosaccharides (XOs) (Figure 3) which were partly shortened after a prolonged incubation.

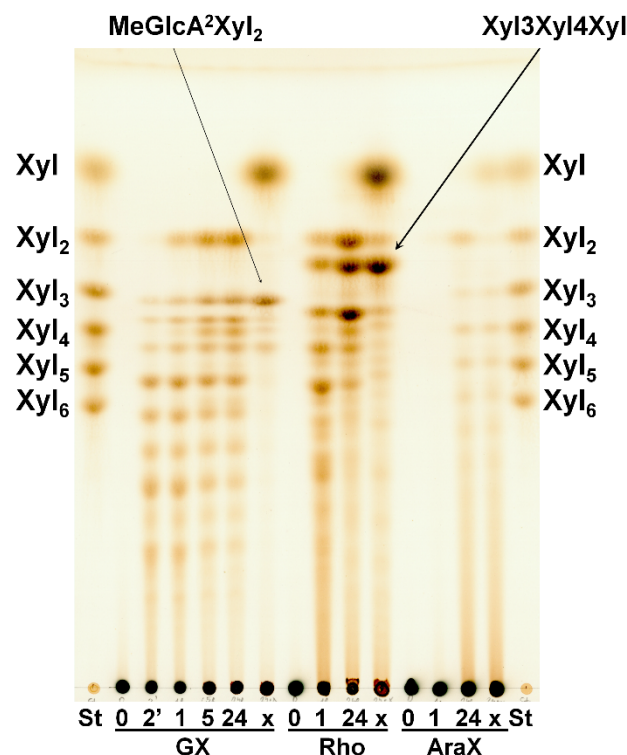


Figure 3. TLC analysis of hydrolysis products released from GX, Rho and AraX by *SIXyn30A* after 2 min, 1 h, 5 h, 24 h and after treatment with β -xylosidase (x). St—standards of linear XOs.

The acidic XOs shortening was accompanied by xylobiose (Xyl_2) formation, which was detectable after 1 h, indicating xylobiohydrolase activity of the enzyme. Later, after 5 h, xylotetraose (Xyl_4) also appeared as a result of transglycosylation reaction. After an application of β -xylosidase to 24 h hydrolysate, the acidic XOs were hydrolyzed to $MeGlcA^2Xyl_2$ which indicates that all acidic XOs had $MeGlcA$ substitution on the second xylopyranosyl ($Xylp$) residue from the reducing end. This mode of GX hydrolysis is typical for the GH30 glucuronoxylanases [13–15]. Glucuronoxylanase activity accompanied by xylobiohydrolase activity has been already described for other GH30-7 enzymes *TcXyn30B* and *TtXyn30A* [2,3]. Our results indicate that *SIXyn30A* might also be a glucuronoxylanase/xylobiohydrolase. However, the acidic XOs in the 24 h hydrolysate were not shortened exclusively to $MeGlcA^2Xyl_2$ and $MeGlcA^2Xyl_3$, as was observed in the case of *TtXyn30A* [3], but longer acidic products remained in the hydrolysate even after 5-day incubation or after an addition of fresh enzyme. In this regard, *SIXyn30A* resembles much more *TcXyn30B* than *TtXyn30A*. MALDI-ToF analysis of the 5-day hydrolysate confirmed the presence of a broad spectrum of acidic XOs from $MeGlcAXyl_2$ to $MeGlcAXyl_{12}$ ($MeGlcAXyl_2$ — $MeGlcAXyl_5$ prevailing) (Figure 4). Xyl_2 was predominant neutral XO but traces of longer XOs up to DP10 were also observed. Kinetic parameters determined for GX were K_m 16.8 mg/mL, k_{cat} 20.2 s⁻¹ and k_{cat}/K_m 1.2 mL/mg·s. Rho was hydrolyzed to a mixture of β -1,4-linked XOs and β -1,3-1,4-XOs, among which the most predominant were Xyl_2 , Xyl_4 , $Xyl\beta 1-3Xyl\beta 1-4Xyl$ and $Xyl\beta 1-4Xyl\beta 1-3Xyl\beta 1-4Xyl$ (Figure 3). β -Xylosidase added to the 24 h-hydrolysate of Rho cleaved all β -1,4-linked XOs to Xyl and all the β -1,3-1,4-linked XOs to $Xyl\beta 1-3Xyl\beta 1-4Xyl$. The final extent of hydrolysis seems to be higher

for Rho than GX. Hydrolysis of AraX was very weak (Figure 3). In this case, Xyl₂ was a predominant product accompanied by a few Ara-substituted XOs, most probably having the Ara substitution on the non-reducing end (they were not attacked by β -xylosidase).

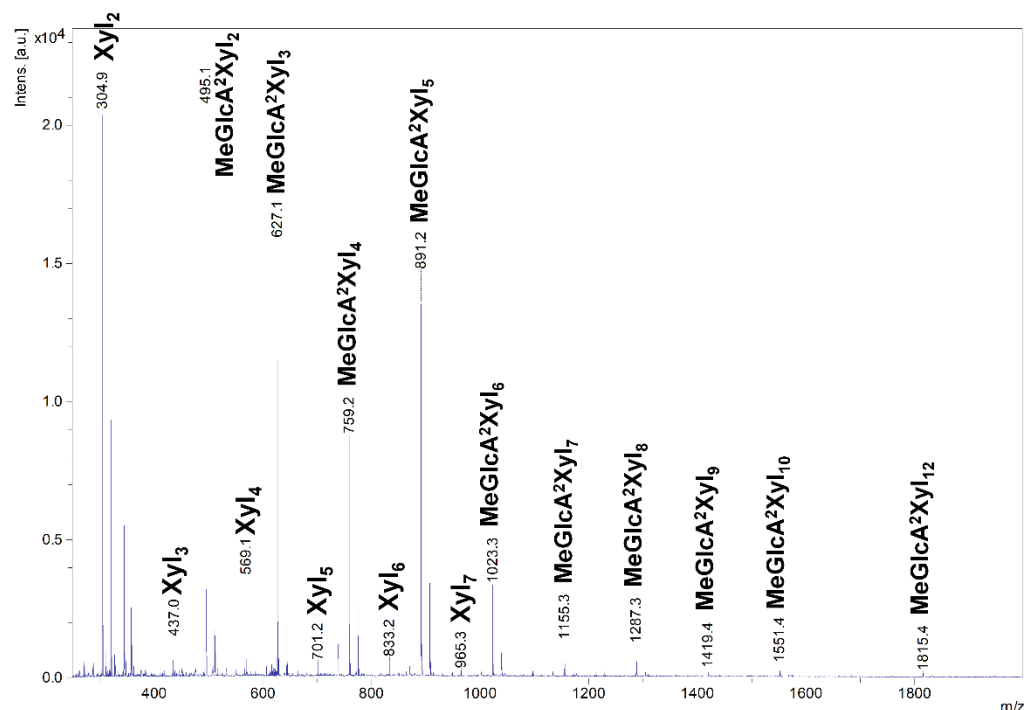


Figure 4. MALDI-ToF MS analysis of 5-day hydrolysate of GX by SIXyn30A.

2.5. Hydrolysis of Oligosaccharides

Xylobiohydrolase activity of SIXyn30A was also observed on various XOs. The main hydrolysis product released from Xyl₄ was Xyl₂, but Xyl₆ was also formed, presumably through transglycosylation reaction (Figure 5a). Xyl₅ was mainly cleaved to Xyl₂ and Xyl₃, and Xyl₆ to Xyl₂ and Xyl₄. In both cases, the transglycosylation products with DP higher by two than the substrate were observed during the early stages of reaction (Figure 5b). Xyl₃ was the worst substrate, being cleaved to Xyl₂ and Xyl₁ only after a prolonged incubation. Transglycosylation products were also formed during the action of SIXyn30A on 4-nitrophenyl glycosides of β -1,4-xylobiose (Xyl₂-NP) and β -1,4-xylotriose (Xyl₃-NP). Xyl₂ release was accompanied by a liberation of 4-nitrophenol from Xyl₂-NP and 4-nitrophenyl xyloside from Xyl₃-NP. This mode of action has unambiguously confirmed that xylobiose moiety is released from the non-reducing end of the substrates. Compared to linear β -1,4-XOs and the corresponding NP-glycosides, MeGlcA-substituted XOs of the same DP were cleaved faster (Figure 6). About 60% of MeGlcA³Xyl₄ was hydrolyzed after 5 min of the reaction, when only about 10% of Xyl₄ or Xyl₃-NP were converted. Specific activities were 0.037 U/mg for Xyl₃, 0.222 U/mg for Xyl₄, 1.9 U/mg for MeGlcA³Xyl₄ and 56.7 U/mg for MeGlcA³Xyl₃ showing the preference of the enzyme for MeGlcA-substituted substrates. It should be noted that the transglycosylation reaction was not observed during the processing of the acidic XOs MeGlcA³Xyl₄ and MeGlcA³Xyl₃.

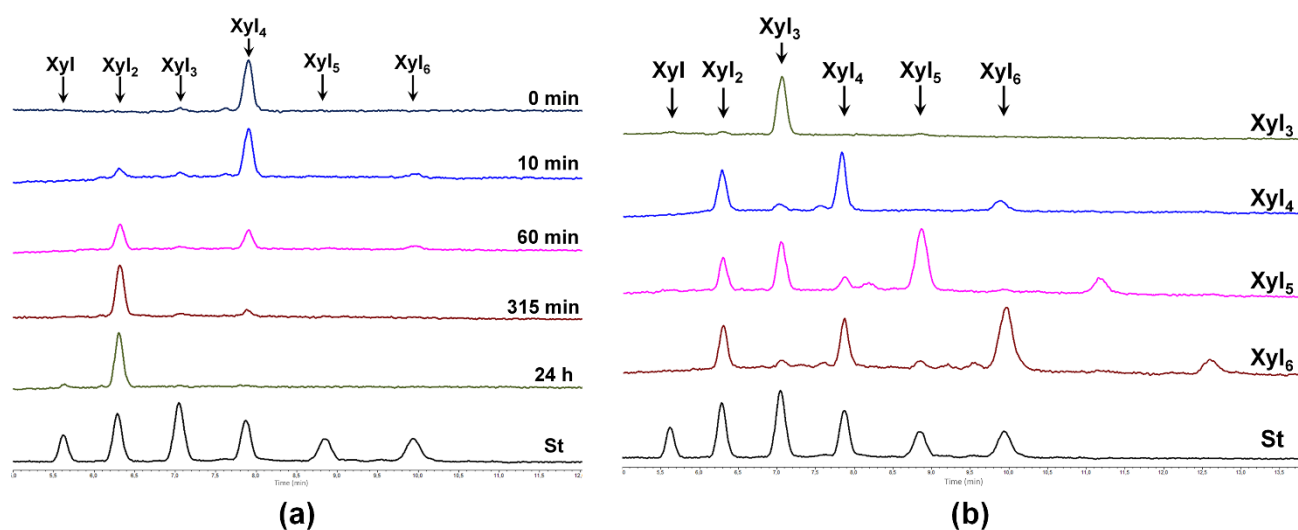


Figure 5. HPLC analysis of hydrolysis of XOs by *SIXyn30A*. (a) Time course of Xyl₄ hydrolysis; (b) Analysis of hydrolysis products generated from Xyl₃-Xyl₆ after 30 min of reaction.

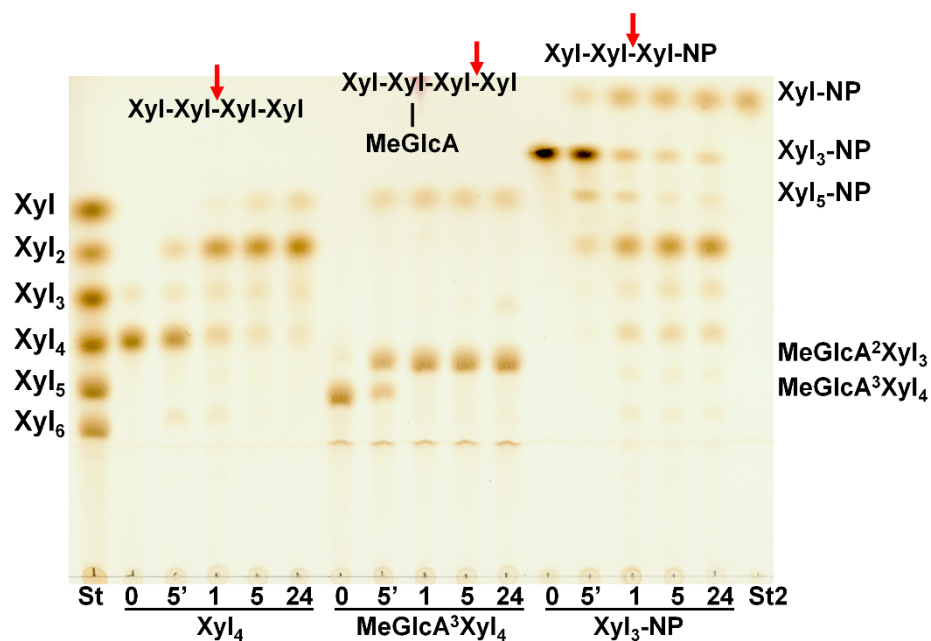


Figure 6. TLC analysis of hydrolysis products released from Xyl₄, MeGlcA³Xyl₄ and Xyl₃-NP by *SIXyn30A* after 5 min, 1 h, 5 h and 24 h. St—standards of linear XOs, St2—standard of 4-nitrophenyl β -D-xylopyranoside.

The activity of *SIXyn30A* was further tested on oligosaccharides containing β -1,3- or β -1,2-linkages or arabinosyl substitution (Figure 7, compounds 1–23). The enzyme was able to slowly release methanol from methyl β -1,4-xylobioside (2) indicating that Xylp unit accommodated in the +1 subsite is not indispensable for enzyme activity. Methyl β -1,4-xylotrioside (4) was hydrolyzed much faster than (2), and exclusively to Xyl₂ and Xyl-Me in accordance with xylobiohydrolase activity of the enzyme. *SIXyn30A* was able to cleave very slowly also β -1,2- and β -1,3-linkages in X4X2XMe (5) and X4X3XMe (7), the former being cleaved faster but significantly slower than (4). However, if Xylp residues at the non-reducing end are connected by α -1,4-linkage, the substances (6,8) are not hydrolyzed. The compounds, in which the substitution would occur on Xylp unit accommodated in the –1 subsite, were not hydrolyzed (9–12). On the other hand, some substitutions of Xylp in the –2a subsite were tolerated. The tolerance was influenced by three factors: (1) position of

the decoration (2 and/or 3); (2) the nature of the substituent; and (3) whether the compound was further elongated at the non-reducing end, i.e., it carried additional Xylp residue that was accommodated in the subsite -3. If the Xylp unit accommodated in the -2a subsite is decorated at position 2 by the MeGlcA, the substrate (MeGlcA³Xyl₃, **16**) is readily hydrolyzed. When the MeGlcA substitution is replaced by α -L-arabinofuranose, the substrate (A2X4X4X, **17**) is slowly attacked, but a change for β -D-xylopyranose (X2X4XMe, **13**) caused a resistance to the enzyme attack. The tolerance at position 3 is greater since A3X4XMe (**18**) and X3X4XMe (**14**) as well as X α 3X4XMe (**15**) were slowly processed. *SIXyn30A* was also able to cleave the substrate (**19**) with doubly 2,3-O-arabinosylated Xylp residue accommodated in the -2a subsite. However, if the compounds with the substitution on Xylp residue in the -2a subsite are by one Xylp longer at the non-reducing end (i.e., they occupy also the -3 subsite), the hydrolysis is slowed down (**20–22**) or even abolished (**23**).

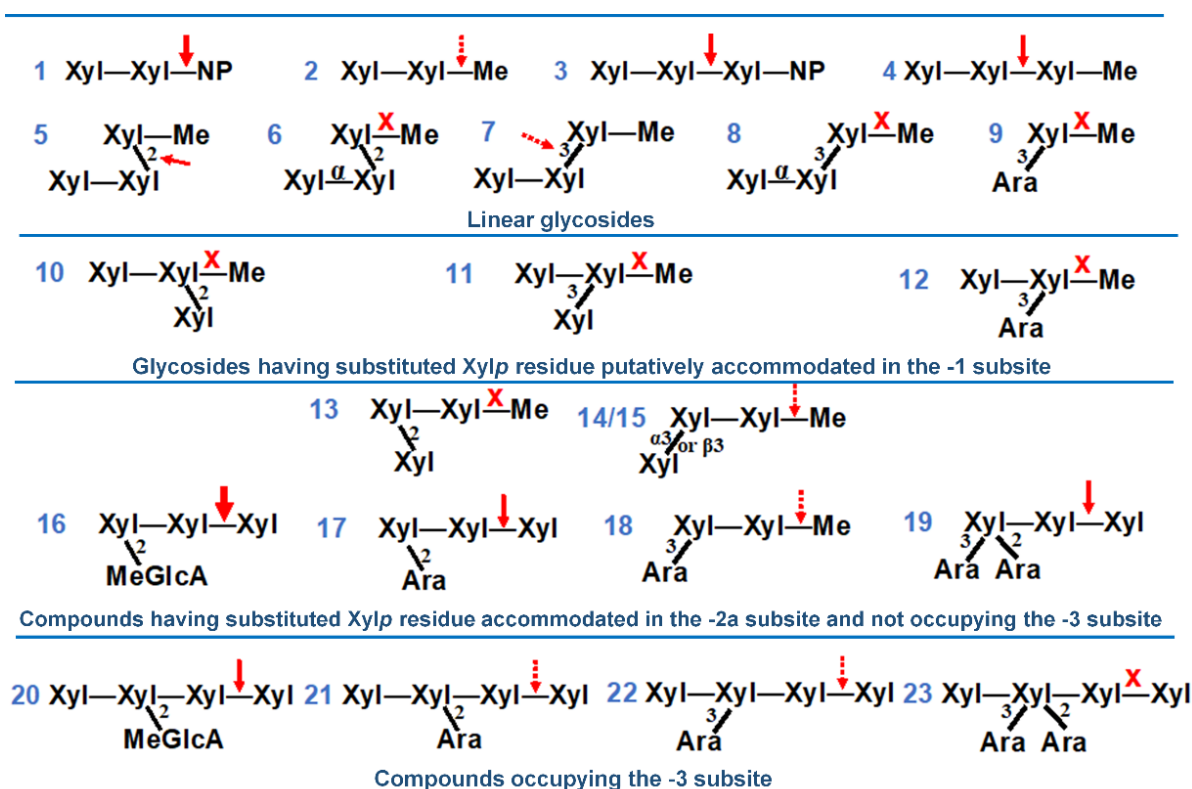


Figure 7. Various XOs tested as the substrates for *SIXyn30A*. The site of cleavage is denoted by an arrow, X marks compounds which were not attacked.

3. Discussion

Many xylanases have been isolated and characterized from bacteria and filamentous fungi while a number of characterized yeast xylanases is limited and no yeast GH30 xylanase has been described so far. Catalytic properties of eukaryotic GH30 xylanases belonging to GH30-7 subfamily, where *SIXyn30A* is also grouped, are diverse. It was, therefore, interesting to determine the specificity of the yeast xylanase, which may be related to a biotechnological potential of the yeast due to its reported ability to convert xylose to xylitol, ethanol or organic acids [26,27]. The GH30 xylanase *SIXyn30A* was cloned, expressed, and characterized. *SIXyn30A* showed the highest amino acid similarity to glucuronoxylanases/xylobiohydrolases *TtXyn30A* and *TcXyn30B*. *SIXyn30A*, similarly to these fungal enzymes, contains Arg46 which was shown to play a role in MeGlcA recognition [4,9]. Another aspect of similarity between the three enzymes is the exact length of β 2- α 2 loop, which may affect the occupation of the -3 subsite. Moreover, Asn90 in this loop corresponds to Asn93 in *TcXyn30B* and Asp78 in *TtXyn30A* which are supposed to play a role in xylobiohydrolase activity of the GH30-7 glucuronoxylanases [4,9]. All

these structural features of *SIXyn30A* are in accordance with its biochemical properties. Glucuronoxylan was the best substrate among the heteroxylans studied and during its hydrolysis, the MeGlcA residue was accommodated in the $-2b$ subsite of the enzyme, yielding acidic XOs of general formula $\text{MeGlcA}^2\text{Xyl}_n$. Such a hydrolysis of GX is typical for GH30 glucuronoxylanases [13–15]. Later, the acidic XOs were partially shortened by *SIXyn30A* through a liberation of Xyl_2 from the non-reducing end, similarly to GH30 xylobiohydrolases [7,8] and glucuronoxylanases/xylobiohydrolases [2,3]. The shortening of the acidic XOs was not complete and the aldouronic acids of a medium size persisted in the *SIXyn30A* hydrolysate. From this point of view, *SIXyn30A* most resembles *TcXyn30B*, which shows an essentially identical end-stage hydrolysis profile [2], and slightly differs from *TtXyn30A*, which liberated the acidic XOs and Xyl_2 simultaneously, and Xyl_2 , $\text{MeGlcA}^2\text{Xyl}_2$ and $\text{MeGlcA}^2\text{Xyl}_3$ were the only final products of GX hydrolysis [3]. In addition, kinetic parameters of *SIXyn30A* on GX are also similar to those of *TcXyn30B* [2].

The xylobiohydrolase activity of *SIXyn30A* was even more pronounced during the hydrolysis of rhodymenan. It was reflected in an accumulation of not only Xyl_2 , but also isomeric xylotriose $\text{Xyl}\beta 1\text{-3Xyl}\beta 1\text{-4Xyl}$ and isomeric xylo-tetraose $\text{Xyl}\beta 1\text{-4Xyl}\beta 1\text{-3Xyl}\beta 1\text{-4Xyl}$. The release of $\text{Xyl}\beta 1\text{-3Xyl}\beta 1\text{-4Xyl}$ is in agreement with the ability of *SIXyn30A* to cleave X3X4XMe (Figure 7, 14) to X3X4X and methanol. Hydrolysis of X4X3XMe is very slow (not finished after 145 h of hydrolysis) indicating a very limited ability of the enzyme to hydrolyze β -1,3-xylosidic linkage. This is in accordance with the presence of $\text{Xyl}\beta 1\text{-4Xyl}\beta 1\text{-3Xyl}\beta 1\text{-4Xyl}$ in 24 h hydrolysate of Rho. In contrast, xylobiohydrolases *AaXyn30A* and *HcXyn30A* are able to cleave β -1,3-linkages much more efficiently and therefore $\text{Xyl}\beta 1\text{-4Xyl}\beta 1\text{-3Xyl}\beta 1\text{-4Xyl}$ was not accumulated but cleaved to two molecules of Xyl_2 in their hydrolysates [7,8].

Linear β -1,4-XOs were processed by *SIXyn30A* in the same way as was described for *TcXyn30B* and *TtXyn30A* [2,3]. Xyl_2 was the main product and XOs longer by two xylose units were formed via transglycosylation. For *SIXyn30A*, Xyl_3 was a much worse substrate than Xyl_4 , suggesting that an occupation of the $+2$ subsite has a significant positive effect on the enzyme activity.

The ability of *SIXyn30A* to recognize MeGlcA substitution was confirmed by a comparison of specific activities on linear XOs and the corresponding XOs decorated by MeGlcA. Specific activity on $\text{MeGlcA}^3\text{Xyl}_3$ was about 1500 times higher than on Xyl_3 . On the other hand, $\text{MeGlcA}^3\text{Xyl}_4$ was only about 8 times better substrate than Xyl_4 . $\text{MeGlcA}^3\text{Xyl}_3$ was hydrolyzed about 30 times faster than $\text{MeGlcA}^3\text{Xyl}_4$. These data clearly indicate the preference of the enzyme for the MeGlcA-decorated substrates and for the substrates not occupying the -3 subsite of the enzyme. The latter preference was confirmed also during the hydrolysis of various methyl glycosides and arabinoxylooligosaccharides when elongation of the XO chain to the -3 subsite of the enzyme (Figure 7, 16 vs. 20, 17 vs. 21, 18 vs. 22, 19 vs. 23) caused a slowdown or an abolishment of the reaction. The evaluation of these compounds allowed us to draw the following conclusions on the requirement of *SIXyn30A* on the structure of the substrates. First, *SIXyn30A* does not tolerate any substitution on Xyl_p residue accommodated in the -1 subsite. Xylose residue accommodated in the $-2a$ subsite may be substituted at position 2 by MeGlcA, which improves the activity, and by α -L-arabinofuranose but not by β -D-xylopyranose. Position 3 may be both arabinosylated and xylosylated, but the activity on such substrates is lower compared to unsubstituted XOs. The elongation of the substrate main chain that results in an occupation of the -3 subsite may dramatically decrease the hydrolysis rate.

4. Materials and Methods

4.1. Substrates, Standards and Enzymes

Beechwood 4-O-methylglucuronoxylan (GX), aldotetraouronic acid $\text{MeGlcA}^3\text{Xyl}_3$ and aldopentaouronic acid $\text{MeGlcA}^3\text{Xyl}_4$ were prepared as described earlier [28,29]. Rhodymenan, an algal linear β -1,3- β -1,4-xylan from *Palmaria palmata*, was a kind gift of Prof. M. Claeysens (University of Ghent, Ghent, Belgium). Wheat arabinoxylan (Ara:Xyl 38:62,

medium viscosity), 4-nitrophenyl glycosides of xylose, xylobiose and xylotriose, linear β -1,4-xylooligosaccharides (Xyl₂-Xyl₆) and arabinoxylooligosaccharides (Figure 7) A2X4X4X (α -L-Araf-1,2- β -D-Xylp-1,4- β -D-Xylp-1,4-D-Xyl, (17), A3[A2]X4X4X (α -L-Araf-1,3-[α -L-Araf-1,2]- β -D-Xylp-1,4- β -D-Xylp-1,4-D-Xyl, (19), X4[A3]X4X4X (β -D-Xylp-1,4-[α -L-Araf-1,3]- β -D-Xylp-1,4- β -D-Xylp-1,4-D-Xyl, (18), X4[A2][A3]X4X4X (β -D-Xylp-1,4-[α -L-Araf-1,2][α -L-Araf-1,3]- β -D-Xylp-1,4- β -D-Xylp-1,4-D-Xyl, (23) and a mixture of X4[A3]X4X4X and X4[A2]X4X4X (β -D-Xylp-1,4-[α -L-Araf-1,2]- β -D-Xylp-1,4- β -D-Xylp-1,4-D-Xyl, (22,21) were purchased from Megazyme International (Bray, Ireland). Methyl glycosides of (arabino)xylooligosaccharides (Figure 7)—A3XMe (α -L-Araf-1,3- β -D-Xylp-O-Me, (9), X4[A3]XMe (β -D-Xylp-1,4-[α -L-Araf-1,3]- β -D-Xylp-O-Me, (12), X4XMe (β -D-Xylp-1,4- β -D-Xylp-O-Me, (2), X4X4XMe (β -D-Xylp-1,4- β -D-Xylp-1,4- β -D-Xylp-O-Me, (4), X4X3XMe (β -D-Xylp-1,4- β -D-Xylp-1,3- β -D-Xylp-O-Me, (7), X4X2XMe (β -D-Xylp-1,4- β -D-Xylp-1,2- β -D-Xylp-O-Me, (5), X3X4XMe (β -D-Xylp-1,3- β -D-Xylp-1,4- β -D-Xylp-O-Me, (14), X α 3X4XMe (α -D-Xylp-1,3- β -D-Xylp-1,4- β -D-Xylp-O-Me, (15), X2X4XMe (β -D-Xylp-1,2- β -D-Xylp-1,4- β -D-Xylp-O-Me, (13), X4[X3]XMe (β -D-Xylp-1,4-[β -D-Xylp-1,3]- β -D-Xylp-O-Me, (11), X4[X2]XMe (β -D-Xylp-1,4-[β -D-Xylp-1,2]- β -D-Xylp-O-Me, (10), X α 4X3XMe (α -D-Xylp-1,4- β -D-Xylp-1,3- β -D-Xylp-O-Me, (8), X α 4X2XMe (α -D-Xylp-1,4- β -D-Xylp-1,2- β -D-Xylp-O-Me, (6)—were synthesized previously [30–35] and were generously supplied by Dr. Ján Hirsch (Institute of Chemistry, Slovak Academy of Sciences, Bratislava, Slovakia). β -Xylosidase was a recombinant *Aspergillus niger* enzyme from GH3 family expressed in *Saccharomyces cerevisiae* [36].

4.2. Amino Acid Sequence Comparison

Amino acid sequence of SIXyn30A (GenBank: ANB12318) was aligned with amino acid sequences of *Talaromyces cellulolyticus* TcXyn30B (GAM36763), TcXyn30C (GAM40414.1), TcXyn30A (GAM43270), *Thermothelomyces thermophila* TtXyn30A (AEO55025), *Talaromyces purpureogenus* (*Penicillium purpurogenum*) TpXynC (AKH40280), *Bispora* sp. BXylD (ADG62369.1), *Trichoderma reesei* TrXynVI (EGR45006.1), *T. reesei* TrXynIV (AAP64786.1), *Acremonium alcalophilum* AaXyn30A [7], and *Talaromyces leycettanus* TlXyn30A [10] using Clustal Omega server [37] and visualized by ESPript server [38].

4.3. Recombinant Strain Preparation

In this work, *P. pastoris* KM71H (MutS strain) was used. The strain preparation and cultivation conditions for production process are described in Rosenbergová et al. [39]. Briefly, the microorganism was cultivated on YPD (*P. pastoris*) plates with 2% (*w/v*) agar and 50 mg/L ZeocinTM (InvivoGen, San Diego, CA, USA). For flask cultivations of *P. pastoris*, BMGY [Buffered Glycerol-complex Medium; 1% (*w/v*) yeast extract, 2% (*w/v*) peptone, 1.34% (*w/v*) YNB, 4×10^{-5} % (*w/v*) biotin, 1% (*v/v*) glycerol, and 100 mM potassium phosphate (pH 6)] and BMMH [Buffered Minimal Methanol Medium; 1.34% (*w/v*) YNB, 4×10^{-5} % (*w/v*) biotin, 0.5% (*v/v*) methanol, and 100 mM potassium phosphate (pH 6)] media were used.

Gene coding for SIXyn30A (GenBank: ANB12318.1) was codon-optimized for *P. pastoris* and purchased from Genaray Biotech Co., Ltd. (Shanghai, China). Plasmid pPICZ α A with ligated *xyn30A* was linearized with SacI (Fast Digest, ThermoFisher Scientific, Waltham, MA, USA). Approximately 5 μ g of linearized plasmid was electroporated to *P. pastoris* KM71H competent cells (prepared according to Lin-Cereghino et al. [40]). Transformed cells were plated on YPD with 100, 150, 200 and 250 mg/L of ZeocinTM and cultivated at 30 °C for 48 h.

Four transformants from YPD plates with 250 mg/L of ZeocinTM were selected and screened for a recombinant SIXyn30A production. Additionally, 500 mL shake-flasks with 100 mL of BMGY medium were inoculated with a single *P. pastoris* colony and cultivated at 30 °C and 200 rpm for 22 h. The induction of enzyme was carried out as reported previously [41]. The cells were harvested by centrifugation (7197 \times g, 10 °C, 5 min), resuspended in 6 mL of sterile distilled water and transferred to 100 mL of BMMH medium with 0.5% (*v/v*) methanol. The cells were then cultivated at 30 °C and 200 rpm for 120 h, and

methanol (100 μL) was added 2 times per day. After termination of cultivation, biomass was centrifuged ($7197\times g$, $10\text{ }^\circ\text{C}$, 5 min) and the supernatants were concentrated and desalted on Microcon centrifugal filter devices (10 kDa cut-off, Millipore) and used for enzyme characterization. Protein concentration was determined by Bradford method using BSA as a standard [42].

4.4. Determination of pH and Temperature Optimum and Temperature Stability

pH optimum was determined at $50\text{ }^\circ\text{C}$ using $10\text{ mg}\cdot\text{mL}^{-1}$ solution of GX in 40 mM Britton–Robinson buffer (pH 2.0–8.0), 15 min incubation, and 64.4 nM *SIXyn30A*. Temperature optimum was determined in the same manner in 50 mM sodium acetate buffer, pH 3.5, and temperatures ranging from $23\text{ }^\circ\text{C}$ to $60\text{ }^\circ\text{C}$. Temperature stability was tested in 50 mM sodium acetate buffer, pH 3.5, at $40\text{--}60\text{ }^\circ\text{C}$ for up to 5 h. During the incubation, aliquots were taken at different time points and the residual activity was immediately determined as described above ($10\text{ mg}\cdot\text{mL}^{-1}$ GX, pH 3.5, $50\text{ }^\circ\text{C}$, 15 min).

4.5. Hydrolysis of Polysaccharides and Oligosaccharides

For specific activity determination, solutions ($10\text{ mg}\cdot\text{mL}^{-1}$) of GX, Rho and AraX in 50 mM sodium acetate buffer, pH 3.5, were mixed with 64.4 nM (GX and Rho) or 644 nM (AraX) *SIXyn30A* and incubated at $50\text{ }^\circ\text{C}$. At time intervals (5–30 min) 100 μL aliquots were taken for a determination of released reducing sugars by Somogyi–Nelson procedure [43]. One unit of activity is defined as the amount of the enzyme liberating in 1 min 1 μmol of reducing sugars expressed as an equivalent of xylose. All reactions were performed at least in triplicate. Kinetic parameters for GX hydrolysis were determined at $50\text{ }^\circ\text{C}$ in 50 mM sodium acetate, pH 3.5, using $2.5\text{--}30\text{ mg}\cdot\text{mL}^{-1}$ substrate concentration and 64.4 nM *SIXyn30A*. Kinetic constants were calculated by a non-linear regression using Origin 6.0 program (OriginLab Corp., Northampton, MA, USA).

For TLC (thin-layer chromatography) analysis, the same polysaccharide solutions (GX, Rho, AraX) were incubated with $1.6\text{ }\mu\text{M}$ *SIXyn30A* at $50\text{ }^\circ\text{C}$. Aliquots of 5 μL were spotted on silica-gel-coated aluminum sheets (Merck, Darmstadt, Germany) after 2 min, 1 h, 5 h, and 24 h of hydrolysis of GX, and 1 h and 24 h of hydrolysis of Rho and AraX. The reaction was terminated after 24 h by heating the mixtures at $100\text{ }^\circ\text{C}$ for 5 min. Subsequent treatment with β -xylosidase ($1\text{ U}\cdot\text{mL}^{-1}$) was performed overnight at $50\text{ }^\circ\text{C}$. TLC plates were developed twice in the solvent system ethyl acetate/acetic acid/2-propanol/formic acid/water 25:10:5:1:15 (*v/v*) and the sugars were visualized with orcinol reagent (0.5% orcinol in 5% sulphuric acid in ethanol). For TLC analysis of Xyl_4 , $\text{MeGlcA}^3\text{Xyl}_4$, $\text{Xyl}_3\text{-NP}$ and methyl glycosides hydrolysis, 2.5 mM substrates were incubated with $1.6\text{ }\mu\text{M}$ *SIXyn30A* at $50\text{ }^\circ\text{C}$. Aliquots of 2 μL were spotted on TLC plate after 5 min, 1 h, 5 h and 24 h of hydrolysis. The plate was developed in a solvent system of *n*-butanol/ethanol/water 10:8:5 (*v/v*), and the sugars were visualized with the orcinol reagent.

For HPLC analysis, 5 mM $\text{Xyl}_3\text{-Xyl}_6$ solutions in 50 mM sodium acetate buffer, pH 3.5, were incubated with $1.3\text{ }\mu\text{M}$ *SIXyn30A* at $50\text{ }^\circ\text{C}$. At time intervals, 10 μL aliquots were taken and heated at $95\text{ }^\circ\text{C}$ for 5 min. The samples were mixed with acetonitrile (1:4) and analyzed on a chromatographic apparatus Dionex UltiMate 3000 UHPLC system (ThermoFisher Scientific, Germering, Germany) equipped with a solvent degasser, quaternary pump, autosampler and thermostatic column compartment coupled to a Corona Veo RS detector (Thermo Fisher Scientific, Germering, Germany). Data processing was carried out with Chromeleon 7.2 SR3 software (Thermo Fisher Scientific, Waltham, MA, USA). Nitrogen gas was supplied by Peak nitrogen generator and Peak air compressor (Peak Scientific Instruments Ltd., Inchinnan, Renfrewshire, Scotland). The CAD device settings was as follows: data collection was set to 50.0 Hz at a filter constant of 3.6 s, power function for response and signal correction was set to 1.00 and evaporator temperature was set to $60\text{ }^\circ\text{C}$. Chromatographic separation was conducted on ARION HILIC Plus column (100 \AA , 3.0 μm , 150 mm \times 4.6 mm) maintained at $30\text{ }^\circ\text{C}$. Mobile phase A consisted of 0.5% acetic acid adjusted to pH 6.97 with NH_4OH (25%, NH_3 water solution), and mobile phase B was

100% acetonitrile. The elution was isocratic at a flow rate of $0.5 \text{ mL} \cdot \text{min}^{-1}$ with a mixture of mobile phases A and B in a ratio of 30:70. Specific activities were determined on 1 mM Xyl₃, Xyl₄, MeGlcA³Xyl₄ and MeGlcA³Xyl₃ in 50 mM sodium acetate buffer, pH 3.5, at 50 °C using 1.3 μM *SIXyn30A*, and calculated on the basis of the amount of liberated Xyl₂ (linear XOs, in the case of Xyl₄ divided by two) or Xyl (MeGlcA³Xyl₄ and MeGlcA³Xyl₃).

4.6. MALDI-ToF MS

The hydrolysates were decationized by Dowex 50 (H⁺ form) and 1 μL was mixed with 1 μL of the matrix (1% solution of 2,5-dihydroxybenzoic acid in 30% acetonitrile) directly on MS target plate. After air-drying, the samples were analyzed by UltrafleXtreme MALDI ToF/ToF mass spectrometer (Bruker Daltonics, Bremen, Germany) operating in reflectron positive mode.

5. Conclusions

The first GH30 xylanase originating from a yeast has been cloned, expressed and characterized. The enzyme *SIXyn30A* from *S. lignohabitans* is a glucuronoxylanase with auxiliary xylobiohydrolase activity. In addition to hardwood glucuronoxylan, it efficiently depolymerizes linear β-1,3-β-1,4-xylan but not cereal arabinoxylan. Its amino acid sequence has the highest similarity to the fungal bifunctional GH30-7 enzymes *TcXyn30B* and *TtXyn30A* which also display glucuronoxylanase and xylobiohydrolase activities. Catalytic properties of *SIXyn30A* also resemble those of *TcXyn30B* and *TtXyn30A* including the recognition of MeGlcA side chain in the −2b subsite, no substitution of xylose occupying the subsite −1, and certain flexibility of decoration of xylopyranosyl unit bound in the −2a subsite. Further characterization of new xylanases from different yeast species will help us to reveal how the yeasts cope with xylan degradation in nature and to better evaluate their biotechnological potential. The crystal structure of *SIXyn30A* with appropriate ligands would improve our knowledge of how GH30-7 glucuronoxylanases/xylobiohydrolases switch between endo- and exo-activities which is not yet fully understood.

Supplementary Materials: The following supporting information can be downloaded online, Figure S1: Multiple sequence alignment of GH30 catalytic domain of *SIXyn30A* with selected GH30-7 xylanases, Figure S2: SDS-PAGE electrophoresis of recombinant *P. pastoris* fermentation broths after induction with methanol.

Author Contributions: Conceptualization, K.Š. and M.R.; methodology, K.Š., A.C., Z.H. and M.R.; investigation, K.Š., A.C., V.P., Z.H. and M.R.; resources, M.R., A.C. and V.P.; writing—original draft preparation, K.Š.; writing—review and editing, M.R., A.C., Z.H. and V.P.; visualization, K.Š. and V.P.; project administration, V.P.; funding acquisition, K.Š., M.R. and V.P. All authors have read and agreed to the published version of the manuscript.

Funding: This work was supported by Scientific Grant Agency under the contract No. 2/0171/22, and by the Slovak Research and Development Agency under the Contract no. APVV-20-0591. This work was funded by the Agency for supporting research and development, according to Agreement Nr. APVV-18-0254. This article is based upon work from COST Action “Nonconventional yeasts for the production of bioproducts” (YEAST4BIO) CA18229, supported by COST (European Cooperation in Science and Technology, www.cost.eu, accessed on 13 December 2021).

Institutional Review Board Statement: Not applicable.

Informed Consent Statement: Not applicable.

Data Availability Statement: The data presented in this study are available on request from the corresponding author.

Acknowledgments: The authors are grateful to Marc Claeysens (University of Ghent, Ghent, Belgium) for supplementation of rhodymenan. The authors also thank Pavol Kováč (NIH National Institute of Diabetes & Digestive & Kidney Diseases, National Institutes of Health, Bethesda, MD, USA) and Ján Hirsch (Institute of Chemistry, Slovak Academy of Sciences) for a generous gift of methyl glycosides of various oligosaccharides.

Conflicts of Interest: The authors declare no conflict of interest. The funders had no role in the design of the study; in the collection, analyses, or interpretation of data; in the writing of the manuscript, or in the decision to publish the results.

Sample Availability: Samples of the compounds are available from the authors.

Abbreviations

EX	endo- β -1,4-xylanase
XOs	xylooligosaccharides
GH	glycoside hydrolase
GX	4-O-methylglucuronoxylan
MeGlcA	4-O-methylglucuronic acid
AraX	arabinoxylan
Rho	rhodymenan (linear β -1,3-1,4-xylan)
Xylp	xylopyranosyl
Xyl _n	linear xylooligosaccharide composed of n D-xylopyranosyl residues linked by β -1,4-linkages
MeGlcA ^z Xyl _n	Xyl _n wherein zth xylopyranosyl residue counted from reducing end is α -glycosylated at position 2 by MeGlcA
NP	4-nitrophenyl
YPD	yeast extract peptone dextrose
YNB	yeast nitrogen base

References

- Lombard, V.; Golaconda Ramulu, H.; Drula, E.; Coutinho, P.M.; Henrissat, B. The Carbohydrate-active enzymes database (CAZy) in 2013. *Nucleic Acids Res.* **2014**, *42*, D490–D495. [[CrossRef](#)] [[PubMed](#)]
- Nakamichi, Y.; Fouquet, T.; Ito, S.; Watanabe, M.; Matsushika, A.; Inoue, H. Structural and functional characterization of a GH30-7 xylanase B from the filamentous fungus *Talaromyces cellulolyticus*. *J. Biol. Chem.* **2019**, *294*, 4065–4078. [[CrossRef](#)] [[PubMed](#)]
- Katsimpouras, C.; Dedes, G.; Thomaidis, N.S.; Topakas, E. A novel fungal GH30 xylanase with xylobiohydrolase auxiliary activity. *Biotechnol. Biofuels* **2019**, *12*, 120. [[CrossRef](#)] [[PubMed](#)]
- Nakamichi, Y.; Watanabe, M.; Matsushika, A.; Inoue, H. Substrate recognition by a bifunctional GH30-7 xylanase B from *Talaromyces cellulolyticus*. *FEBS Open Bio* **2020**, *10*, 1180–1189. [[CrossRef](#)]
- Nakamichi, Y.; Fouquet, T.; Ito, S.; Matsushika, A.; Inoue, H. Mode of action of GH30-7 reducing-end xylose-releasing exoxylanase A (Xyn30A) from the filamentous fungus *Talaromyces cellulolyticus*. *Appl. Environ. Microbiol.* **2019**, *85*, e00552-19. [[CrossRef](#)]
- Nakamichi, Y.; Fujii, T.; Fouquet, T.; Matsushika, A.; Inoue, H. GH30-7 endoxylanase C from the filamentous fungus *Talaromyces cellulolyticus*. *Appl. Environ. Microbiol.* **2019**, *85*, e0144219. [[CrossRef](#)]
- Šuchová, K.; Puchart, V.; Spodsberg, N.; Mørkeberg Krogh, K.B.R.; Biely, P. A novel GH30 xylobiohydrolase from *Acremonium alcalophilum* releasing xylobiose from the non-reducing end. *Enzyme Microb. Technol.* **2020**, *134*, 109484. [[CrossRef](#)]
- Šuchová, K.; Puchart, V.; Biely, P. A novel bacterial GH30 xylobiohydrolase from *Hungateiclostridium clariflavum*. *Appl. Microbiol. Biotechnol.* **2021**, *105*, 185–195. [[CrossRef](#)]
- Nikolaivits, E.; Pentari, C.; Kosinas, C.; Feiler, C.G.; Spiliopoulou, M.; Weiss, M.S.; Dimarogona, M.; Topakas, E. Unique features of the bifunctional GH30 from *Thermothelomyces thermophila* revealed by structural and mutational studies. *Carbohydr. Polym.* **2021**, *273*, 118553. [[CrossRef](#)]
- Šuchová, K.; Spodsberg, N.; Mørkeberg Krogh, K.B.R.; Biely, P.; Puchart, V. Non-Specific GH30_7 Endo- β -1,4-xylanase from *Talaromyces leycettanus*. *Molecules* **2021**, *26*, 4614. [[CrossRef](#)]
- Šuchová, K.; Puchart, V.; Spodsberg, N.; Mørkeberg Krogh, K.B.R.; Biely, P. Catalytic Diversity of GH30 Xylanases. *Molecules* **2021**, *26*, 4528. [[CrossRef](#)] [[PubMed](#)]
- Puchart, V.; Šuchová, K.; Biely, P. Xylanases of glycoside hydrolase family 30—An overview. *Biotechnol. Adv.* **2021**, *47*, 107704. [[CrossRef](#)] [[PubMed](#)]
- Biely, P.; Puchart, V.; Stringer, M.A.; Mørkeberg Krogh, K.B.R. *Trichoderma reesei* XYN VI—a novel appendage dependent eukaryotic glucuronoxylan hydrolase. *FEBS J.* **2014**, *281*, 3894–3903. [[CrossRef](#)] [[PubMed](#)]
- Vršanská, M.; Kolenová, K.; Puchart, V.; Biely, P. Mode of action of glycoside hydrolase family 5 glucuronoxylan xylanohydrolase from *Erwinia chrysanthemi*. *FEBS J.* **2007**, *274*, 1666–1677. [[CrossRef](#)]
- St. John, F.J.; Rice, J.D.; Preston, J.F. Characterization of XynC from *Bacillus subtilis* subsp. *subtilis* strain 168 and analysis of its role in depolymerization of glucuronoxylan. *J. Bacteriol.* **2006**, *188*, 8617–8626. [[CrossRef](#)] [[PubMed](#)]
- Leathers, T.D. Color variants of *Aureobasidium pullulans* overproduce xylanase with extremely high specific activity. *Appl. Environ. Microbiol.* **1986**, *52*, 1026–1030. [[CrossRef](#)]

17. Li, X.L.; Zhang, Z.Q.; Dean, J.F.D.; Eriksson, K.E.L.; Ljungdahl, L.G. Purification and characterization of a new xylanase (APX-II) from the fungus *Aureobasidium pullulans* Y-2311-1. *Appl. Environ. Microbiol.* **1993**, *59*, 3212–3218. [[CrossRef](#)]
18. Biely, P.; Vršanská, M.; Krátky, Z. Xylan-degrading enzymes of the yeast *Cryptococcus albidus*: Identification and cellular localization. *Eur. J. Biochem.* **1980**, *108*, 313–321. [[CrossRef](#)]
19. Petrescu, I.; Lamotte-Brasseur, J.; Chessa, J.-P.; Ntarima, P.; Claeysens, M.; Devreese, B.; Marino, G.; Gerday, C. Xylanase from the psychrophilic yeast *Cryptococcus adeliae*. *Extremophiles* **2000**, *4*, 137–144. [[CrossRef](#)]
20. Parachin, N.S.; Siqueira, S.; de Faria, F.P.; Torres, F.A.G.; de Moraes, L.M.P. Xylanases from *Cryptococcus flavus* isolate I-11: Enzymatic profile, isolation and heterologous expression of CfXYN1 in *Saccharomyces cerevisiae*. *J. Mol. Catal. B Enzym.* **2009**, *59*, 52–57. [[CrossRef](#)]
21. Ding, C.; Li, M.X.; Hu, Y. High-activity production of xylanase by *Pichia stipitis*: Purification, characterization, kinetic evaluation and xylooligosaccharides production. *Int. J. Biol. Macromol.* **2018**, *117*, 72–77. [[CrossRef](#)] [[PubMed](#)]
22. Adsul, M.G.; Bastawde, K.B.; Gokhale, D.V. Biochemical characterization of two xylanases from yeast *Pseudozyma hubeiensis* producing only xylooligosaccharides. *Bioresour. Technol.* **2009**, *100*, 6488–6495. [[CrossRef](#)] [[PubMed](#)]
23. Ravn, J.L.; Engqvist, M.K.M.; Larsbrink, J.; Geijer, C. CAZyme prediction in ascomycetous yeast genomes guides discovery of novel xylanolytic species with diverse capacities for hemicellulose hydrolysis. *Biotechnol. Biofuels* **2021**, *14*, 150. [[CrossRef](#)] [[PubMed](#)]
24. Kurtzman, C.P.; Robnett, C.J. Multigene phylogenetic analysis of the *Trichomonascus*, *Wickerhamiella* and *Zygoascus* yeast clades, and the proposal of *Sugiyamaella* gen. nov. and 14 new species combinations. *FEMS Yeast Res.* **2007**, *7*, 141–151. [[CrossRef](#)]
25. Houseknecht, J.L.; Hart, E.L.; Suh, S.O.; Zhou, J.J. Yeasts in the *Sugiyamaella* clade associated with wood-ingesting beetles and the proposal of *Candida bullrunensis* sp. nov. *Int. J. Syst. Evol. Microbiol.* **2011**, *61*, 1751–1756. [[CrossRef](#)]
26. Sena, L.M.; Morais, C.G.; Lopes, M.R.; Santos, R.O.; Uetanabaro, A.P.; Morais, P.B.; Vital, M.J.; de Morais, M.A., Jr.; Lachance, M.A.; Rosa, C.A. D-Xylose fermentation, xylitol production and xylanase activities by seven new species of *Sugiyamaella*. *Antonie Leeuwenhoek* **2017**, *110*, 53–67. [[CrossRef](#)]
27. Bellasio, M.; Mattanovich, D.; Sauer, M.; Marx, H. Organic acids from lignocellulose: *Candida lignohabitans* as a new microbial cell factory. *J. Ind. Microbiol. Biotechnol.* **2015**, *42*, 681–691. [[CrossRef](#)]
28. Ebringerová, A.; Kramár, A.; Rendoš, F.; Domanský, R. Stepwise extraction of hemicellulose from wood of white beech (*Carpinus betulus* L.). *Holzforchung* **1967**, *21*, 74–77. [[CrossRef](#)]
29. Biely, P.; Vršanská, M.; Tenkanen, M.; Kluepfel, D. Endo- β -1,4-xylanases: Differences in catalytic properties. *J. Biotechnol.* **1997**, *57*, 151–166. [[CrossRef](#)]
30. Hirsch, J.; Kováč, P. Alternative synthesis of methylated sugars. 21. Synthesis of 2 isomeric methyl β -D-xylotrisides containing a (1-2)- β -linkage. *Carbohydr. Res.* **1979**, *77*, 241–244. [[CrossRef](#)]
31. Hirsch, J.; Petráková, E. Sequential synthesis and C-13 NMR-spectra of methyl 3-O and 2-O-(β -D-xylobiosyl)- β -D-xylopyranosides. *Chem. Pap.* **1984**, *38*, 409–417.
32. Hirsch, J.; Petráková, E.; Schraml, J. Stereoselective synthesis and ^{13}C -N.m.r. spectra of two isomeric methyl β -glycosides of trisaccharides related to arabinoxylan. *Carbohydr. Res.* **1984**, *131*, 219–226. [[CrossRef](#)]
33. Kováč, P. Alternative synthesis of methylated sugars. 17. Synthesis of methyl 3,4-di-O-(β -D-xylopyranosyl)- β -D-xylopyranoside, a methyl β -xylotriside related to branched xylans. *Collect. Czechoslov. Chem. Commun.* **1979**, *44*, 928–932. [[CrossRef](#)]
34. Kováč, P.; Hirsch, J. Alternative synthesis of methylated sugars. 23. Stepwise synthesis of methyl 4-O-[3-O-(β -D-xylopyranosyl)- β -D-xylopyranosyl]- β -D-xylopyranoside. *Carbohydr. Res.* **1980**, *79*, 303–307. [[CrossRef](#)]
35. Kováč, P.; Hirsch, J. Alternative synthesis of methylated sugars. 24. Sequential synthesis and ^{13}C -N.M.R spectra of methyl β -glycosides of (1-4)- β -D-xylo-oligosaccharides. *Carbohydr. Res.* **1982**, *100*, 177–193. [[CrossRef](#)]
36. Biely, P.; Hirsch, J.; la Grange, D.C.; van Zyl, W.H.; Prior, B.A. A chromogenic substrate for a β -xylosidase-coupled assay of α -glucuronidase. *Anal. Biochem.* **2000**, *286*, 289–294. [[CrossRef](#)]
37. Madeira, F.; Park, Y.M.; Lee, J.; Buso, N.; Gur, T.; Madhusoodanan, N.; Basutkar, P.; Tivey, A.R.N.; Potter, S.C.; Finn, R.D.; et al. The EMBLEBI search and sequence analysis tools APIs in 2019. *Nucleic Acids Res.* **2019**, *47*, W636–W641. [[CrossRef](#)]
38. Robert, X.; Gouet, P. Deciphering key features in protein structures with the new ENDscript server. *Nucleic Acids Res.* **2014**, *42*, W320–W324. [[CrossRef](#)]
39. Rosenbergová, Z.; Kántorová, K.; Šimkovič, M.; Breier, A.; Rebroš, M. Optimisation of recombinant myrosinase production in *Pichia pastoris*. *Int. J. Mol. Sci.* **2021**, *22*, 3677. [[CrossRef](#)]
40. Lin-Cereghino, J.; Wong, W.W.; Xiong, S.; Giang, W.; Luong, L.T.; Vu, J.; Johnson, S.D.; Lin-Cereghino, G.P. Condensed Protocol for Competent Cell Preparation and Transformation of the Methylotrophic Yeast *Pichia pastoris*. *Biotechniques* **2005**, *38*, 44–48. [[CrossRef](#)]
41. Markošová, K.; Weignerová, L.; Rosenberg, M.; Křen, V.; Rebroš, M. Upscale of recombinant α -L-rhamnosidase production by *Pichia pastoris* MutS strain. *Front. Microbiol.* **2015**, *6*, 1140. [[CrossRef](#)] [[PubMed](#)]
42. Bradford, M. A rapid and sensitive method for the quantification of microgram quantities of protein utilizing the principle of protein-dye binding. *Anal. Biochem.* **1976**, *72*, 248–254. [[CrossRef](#)]
43. Paleg, L.G. Citric acid interference in the estimation of reducing sugars with alkaline copper reagents. *Anal. Chem.* **1959**, *31*, 1092–1094. [[CrossRef](#)]