

Brief Communication
Infectious Diseases,
Microbiology & Parasitology



OPEN ACCESS

Received: Feb 10, 2020

Accepted: Feb 11, 2020

Address for Correspondence:

Sang-Joon Park, MD, PhD

Department of Pulmonary and Critical Care
Medicine, Myongji Hospital, 55 Hwasu-ro
14-beon-gil, Deogyang-gu, Goyang 10475,
Republic of Korea.

E-mail: drjoseph@mjh.or.kr

Baekseung Lee, PhD

CancerROP, 173 Digital-ro, Geumcheon-gu,
Seoul 08511, Republic of Korea.

E-mail: baekseung@gmail.com

© 2020 The Korean Academy of Medical
Sciences.

This is an Open Access article distributed
under the terms of the Creative Commons
Attribution Non-Commercial License ([https://
creativecommons.org/licenses/by-nc/4.0/](https://creativecommons.org/licenses/by-nc/4.0/))
which permits unrestricted non-commercial
use, distribution, and reproduction in any
medium, provided the original work is properly
cited.

ORCID iDs

Jaegyun Lim

<https://orcid.org/0000-0002-3553-0058>

Seunghyun Jeon

<https://orcid.org/0000-0002-4320-2644>

Hyun-Young Shin

<https://orcid.org/0000-0001-7261-3365>

Moon Jung Kim

<https://orcid.org/0000-0003-4148-9116>

Yu Min Seong

<https://orcid.org/0000-0001-9650-6353>

Wang Jun Lee

<https://orcid.org/0000-0002-3042-1557>

Case of the Index Patient Who Caused Tertiary Transmission of Coronavirus Disease 2019 in Korea: the Application of Lopinavir/Ritonavir for the Treatment of COVID-19 Pneumonia Monitored by Quantitative RT-PCR

Jaegyun Lim ¹, Seunghyun Jeon ², Hyun-Young Shin ³, Moon Jung Kim ¹,
Yu Min Seong ⁴, Wang Jun Lee ⁵, Kang-Won Choe ⁶, Yu Min Kang ⁶,
Baekseung Lee ⁷ and Sang-Joon Park ⁸

¹Department of Laboratory Medicine, Myongji Hospital, Hanyang University College of Medicine, Goyang, Korea

²New Horizon Cancer Institute, Myongji Hospital, Goyang, Korea

³Department of Family Medicine, Myongji Hospital, Hanyang University College of Medicine, Goyang, Korea

⁴Department of Internal Medicine, Myongji Hospital, Goyang, Korea

⁵Office of Chief Executive Officer and Chairman, Department of General Surgery, Myongji Hospital, Goyang, Korea

⁶Department of Infectious Diseases, Myongji Hospital, Goyang, Korea





⁷CancerROP, Seoul, Korea

⁸Department of Pulmonary and Critical Care Medicine, Myongji Hospital, Goyang, Korea

ABSTRACT

Since mid-December of 2019, coronavirus disease 2019 (COVID-19) has been spreading from Wuhan, China. The confirmed COVID-19 patients in South Korea are those who came from or visited China. As secondary transmissions have occurred and the speed of transmission is accelerating, there are rising concerns about community infections. The 54-year old male is the third patient diagnosed with COVID-19 in Korea. He is a worker for a clothing business and had mild respiratory symptoms and intermittent fever in the beginning of hospitalization, and pneumonia symptoms on chest computerized tomography scan on day 6 of admission. This patient caused one case of secondary transmission and three cases of tertiary transmission. Hereby, we report the clinical findings of the index patient who was the first to cause tertiary transmission outside China. Interestingly, after lopinavir/ritonavir (Kaletra, AbbVie) was administered, β -coronavirus viral loads significantly decreased and no or little coronavirus titers were observed.

Keywords: Coronavirus; COVID-19; Pneumonia; Tertiary Infection; Viral Load; Real-Time Reverse-Transcriptase Polymerase Chain Reaction

Kang-Won Choe 
<https://orcid.org/0000-0003-2003-6492>
 Yu Min Kang 
<https://orcid.org/0000-0002-4368-9878>
 Baekseung Lee 
<https://orcid.org/0000-0001-7867-8434>
 Sang-Joon Park 
<https://orcid.org/0000-0003-3178-6272>

Disclosure

The authors have no potential conflicts of interest to disclose.

Author Contributions

Conceptualization: Lim J. Data curation: Kim MJ, Lee B, Shin HY, Seong YM. Formal analysis: Jeon S, Kim MJ, Shin HY, Lee B. Methodology: Lee B. Project administration: Park SJ. Supervision: Lee WJ, Choe KW. Validation: Lee WJ. Writing - original draft: Park SJ. Writing - review & editing: Choe KW, Kang YM.

A 54-year-old Korean man living in Wuhan, China entered Korea on January 20, 2020 and felt the first symptoms of chills and muscle pain on January 22. After contacting a public health center on January 25, he was isolated in a negative pressure room at Myongji Hospital and confirmed to have COVID-19 on January 26.

At that time the initial confirmation of COVID-19 was made by pan-coronavirus conventional polymerase chain reaction assay and sequencing of the polymerase chain reaction (PCR) amplicons using a throat swab.

The index patient transmitted the virus to his friend (patient A) at a restaurant on the 1st day of the symptoms. And then patient A (confirmed on January 30, 2020) transmitted COVID-19 to his spouse and son (confirmed on January 31, 2020), and a church colleague (confirmed on February 6, 2020). Those were the first cases of tertiary transmission of COVID-19 outside China.

The index patient was a clothing worker at the Wuhan Fashion Center, with a height of 193 cm and weight of 96 kg (body mass index, 25.7), and had no major illness. He denied any smoking and drinking history. On admission day, he had no respiratory symptoms and blood pressure of 152/93 mmHg, pulse rate of 73 beats per minute, respiratory rate of 20 breaths per minute, and a body temperature of 37.0°C. On physical examination, no pharyngeal injection, clear lung sounds, and no haziness on chest X-ray were observed. Tests for *Leptospira*, Hantan virus, Tsutsugamushi, Malaria, *M tuberculosis*, human immunodeficiency virus (HIV) Ag/Ab, and venereal disease research laboratory (VDRL) test were all negative.

He developed fever and dry cough on days 5 and 7 of illness, respectively, but he had no serious respiratory symptoms such as shortness of breath, productive sputum or chest pain. Small consolidation in right upper lobe and ground-glass opacities in both lower lobes were observed on high-resolution computed tomography scan (Figs. 1 and 2, Table 1).

The initial viral load could not be measured because real-time PCR was not available when the patient was diagnosed. So we measured viral loads using quantitative reverse transcription (RT)-PCR since Jan. 31, 2020. Viral RNA was extracted from the sputum using QIAamp viral RNA mini kit (Qiagen, Hilden, Germany) according to the manufacturer's instructions. All quantitative real-time PCR amplifications were performed using Quantstudio 1 (Applied Biosystems, Foster City, CA, USA) and PowerCheck™ SARS-CoV-2 Real-Time PCR kit (KogeneBiotech, Seoul, Korea).

There were some reports about lopinavir/ritonavir (Kaletra, AbbVie) for the treatment of COVID-19.¹ Lopinavir/ritonavir was started from the hospital day 8 (day 10 of illness); 2 tablets (lopinavir 200 mg/ritonavir 50 mg) were given per oral bid. Interestingly, from the next day of lopinavir/ritonavir administration, β -coronavirus viral load started to decrease and no detectable or little coronavirus titers have been observed since then (Fig. 2 and Supplementary Fig. 1).

It is possible that the decreased load of SARS-CoV-2 resulted from the natural course of the healing process rather than administration of lopinavir/ritonavir, or both. Therefore, more data need to be collected to figure out the direct effect of lopinavir/ritonavir on treatment with COVID-19.

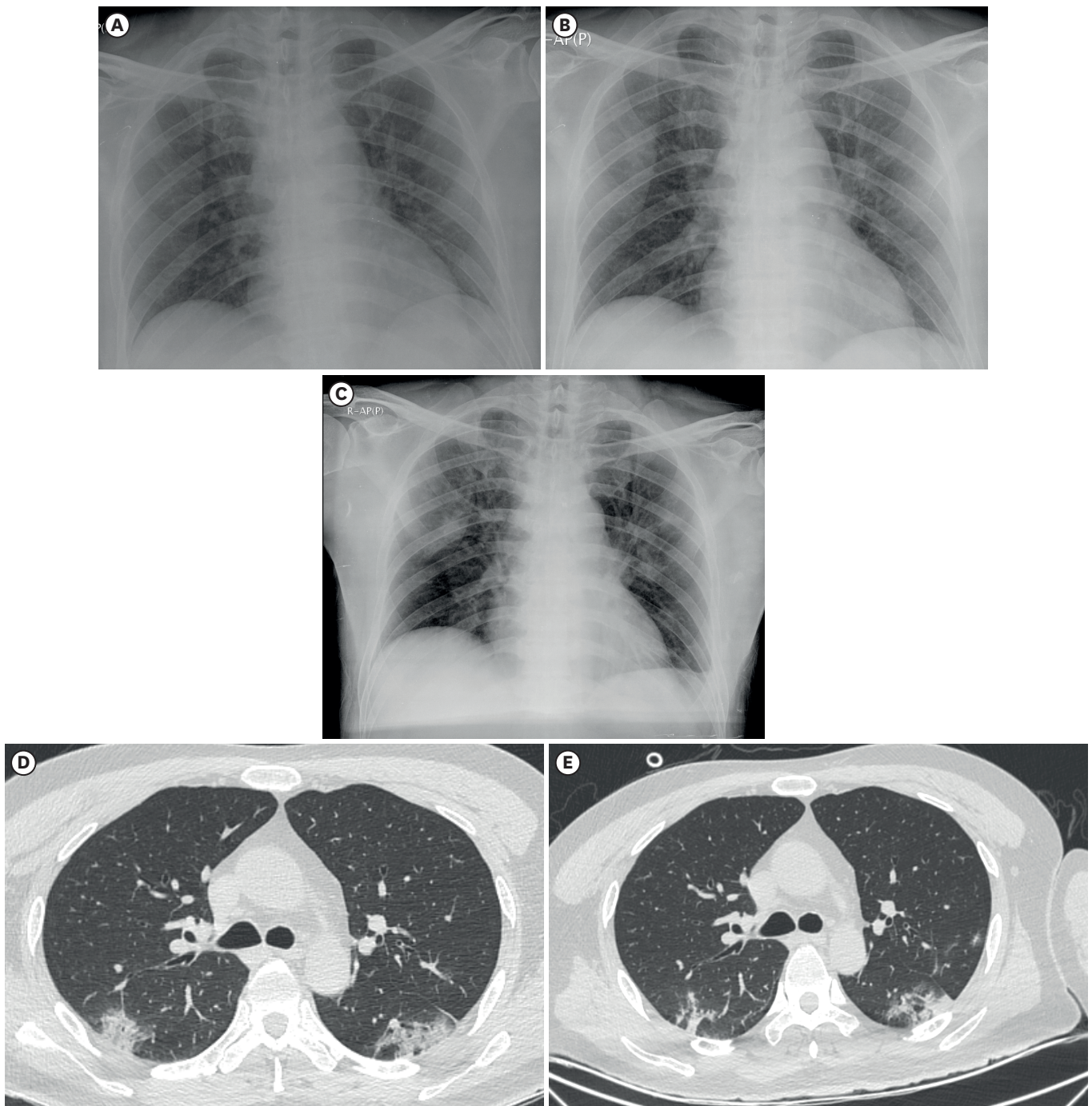


Fig. 1. Radiologic findings of the patient.

(A) Chest X-ray of illness day 3, hospital day 1. (B) Chest X-ray of illness day 9, hospital day 7. (C) Chest X-ray of illness day 15, hospital day 13. (D) HRCT scan of illness day 9, hospital day 7. (E) HRCT scan of illness day 15, hospital day 13.

AP(P) = Anteroposterior (Portable X-ray), HRCT = high-resolution computed tomography.

The patient also complained of psychiatric symptoms such as depression, insomnia and suicidal thoughts after isolation. The patient experienced stress regarding people's reactions from the media reports about the COVID-19 patients. In addition, despite mild symptoms of COVID-19 in his case, isolation in the negative pressure room during treatment might be one

Table 1. Serial laboratory results of the patient

Variables	Illness day 3 (HD 1)	Illness day 6 (HD 4)	Illness day 7 (HD 5)	Illness day 8 (HD 6)	Illness day 10 (HD 8)	Illness day 12 (HD 10)	Illness day 14 (HD 12)	Illness day 16 (HD 14)
White blood cell count, $\times 10^3/\mu\text{L}$	7,200	5,800	5,200	6,700	6,000	6,700	8,600	9,100
Segment neutrophil, %	59.0	64.2	50.3	69.3	58.8	55.5	63.1	63.0
Lymphocyte, %	28.5	24.0	36.5	19.1	30.9	29.4	24.4	24.9
Monocyte, %	11.5	11.0	11.6	10.7	9.2	13.5	10.9	10.2
Eosinophil, %	0.6	0.3	1.0	0.6	0.8	1.3	1.3	1.5
Hemoglobin, g/dL	16.3	15.4	16.1	15.3	15.2	14.9	14.2	13.9
Platelets, $\times 10^3/\mu\text{L}$	301	176	212	225	229	287	358	507
Glucose, mg/dL	97	114	-	-	-	-	-	103
BUN, mg/dL	13.0	7.0	10.1	9.1	9.6	7.9	6.3	8.1
Creatinine, mg/dL	1.0	0.8	1.2	0.8	1.0	0.8	0.8	0.9
Total bilirubin, mg/dL	0.50	0.47	-	0.35	0.61	0.74	0.85	1.09
AST, U/L	27	31	-	22	127	54	19	17
ALT, U/L	29	37	-	29	106	83	45	30
Uric acid, mg/dL	8.6	7.0	-	-	-	-	-	-
CK, U/L	-	43	-	-	-	31	30	28
ALP, U/L	-	62	-	-	-	140	113	95
LDH, U/L	-	332	-	-	-	-	351	329
Sodium, mmol/L	138	135	138	137	138	138	138	139
Potassium, mmol/L	4.3	4.1	4.8	4.2	4.2	4.3	4.2	4.3
Chloride, mmol/L	104	104	105	104	102	103	103	103
Total protein, g/dL	7.4	6.4	6.8	6.3	6.3	6.4	6.3	6.5
Albumin, g/dL	4.5	3.9	4.1	3.8	3.8	3.8	3.7	3.7
ESR, mm/hr	26	27	-	-	66	-	-	82
CRP, mg/dL	0.43	1.23	-	4.51	10.94	9.11	11.20	3.60
Pro-Calcitonin, ng/mL	-	0.06	-	-	-	-	-	-
PT, sec	12.5	12.9	-	-	13.2	13.1	13.6	13.6
PT INR	0.96	1.00	-	-	1.03	1.02	1.07	1.07
aPTT, sec	40.4	38.5	-	-	38.8	38.0	40.1	40.7
D-dimer, $\mu\text{g/mL}$ (FEU)	-	0.28	-	-	-	-	1.22	-

HD = hospital day, AST = aspartate aminotransferase, ALT = alanine aminotransferase, CK = creatine kinase, ALP = alkaline phosphatase, LDH = lactate dehydrogenase, ESR = erythrocyte sedimentation rate, CRP = C-reactive protein, PT = prothrombin time, INR = international normalized ratio, aPTT = activated partial thromboplastin time, FEU = fibrinogen equivalent units.

ACKNOWLEDGMENTS

We thank to Myongji Hospital staffs for their efforts to cope with COVID-19 and CancerROP Co., Ltd., for providing a test diagnostic kit to measure SARS-CoV-2 virus titers.

SUPPLEMENTARY MATERIAL

Supplementary Fig. 1

Time course quantification of SARS-CoV-2 by real-time RT-PCR. (A) Quantitative RT-PCR analysis of beta CoV. (B) SARS-CoV-2 in sputum samples collected from the patient. The results showed decline of virus titers with time and no detectable RdRP titer at illness days 12 and 13.

[Click here to view](#)

REFERENCES

1. Kim JY, Choe PG, Oh Y, Oh KJ, Kim J, Park SJ, et al. The first case of 2019 novel coronavirus pneumonia imported into Korea from Wuhan, China: implication for infection prevention and control measures. *J Korean Med Sci* 2020;35(5):e61.
[PUBMED](#) | [CROSSREF](#)
2. Hamer M, Kivimaki M, Stamatakis E, Batty GD. Psychological distress and infectious disease mortality in the general population. *Brain Behav Immun* 2019;76:280-3.
[PUBMED](#) | [CROSSREF](#)
3. Li Q, Guan X, Wu P, Wang X, Zhou L, Tong Y, et al. Early transmission dynamics in Wuhan, China, of novel coronavirus-infected pneumonia. *N Engl J Med* 2020.
[PUBMED](#) | [CROSSREF](#)
4. Rothe C, Schunk M, Sothmann P, Bretzel G, Froeschl G, Wallrauch C, et al. Transmission of 2019-nCoV Infection from an asymptomatic contact in Germany. *N Engl J Med* 2020.
[PUBMED](#) | [CROSSREF](#)
5. Chang D, Lin M, Wei L, Xie L, Zhu G, Dela Cruz CS, et al. Epidemiologic and clinical characteristics of novel coronavirus infections involving 13 patients outside Wuhan, China. *JAMA* 2020.
[PUBMED](#) | [CROSSREF](#)