

# Leptin and uric acid as predictors of metabolic syndrome in Jordanian adults

Ahmad A. Obeidat<sup>1</sup><sup>§</sup>, Mousa N. Ahmad<sup>2</sup>, Fares H. Haddad<sup>3</sup> and Firas S. Azzeh<sup>4</sup>

<sup>1</sup>Department of Clinical Nutrition, Faculty of Applied Medical Sciences, Taibah University, Yanbu Street, Yanbu 21911, Saudi Arabia

<sup>2</sup>Department of Nutrition, Faculty of Agriculture, University of Jordan, Amman, Jordan

<sup>3</sup>Department of Endocrinology, King Hussein Medical Center, Amman, Jordan

<sup>4</sup>Department of Clinical Nutrition, Faculty of Applied Medical Sciences, Umm Al-Qura University, Makkah, Saudi Arabia

**BACKGROUND/OBJECTIVES:** Metabolic syndrome (MetS) is a set of interrelated metabolic risk factors that increase the risk of cardiovascular morbidity and mortality. Studies regarding the specificity and sensitivity of serum levels of leptin and uric acid as predictors of MetS are limited. The aim of this study was to evaluate the serum levels of leptin and uric acid in terms of their specificity and sensitivity as predictors of MetS in the studied Jordanian group.

**SUBJECTS/METHODS:** In this cross sectional study, 630 adult subjects (308 men and 322 women) were recruited from the King Hussein Medical Center (Amman, Jordan). The diagnosis of MetS was made according to the 2005 International Diabetes Federation criteria. Receiver operating characteristic curves were used to determine the efficacy of serum levels of leptin and uric acid as predictors of MetS in the studied Jordanian group.

**RESULTS:** Study results showed that for identification of subjects with MetS risk, area under the curve (AUC) for leptin was 0.721 and 0.683 in men and women, respectively. Serum uric acid levels in men showed no significant association with any MetS risk factors and no significant AUC, while uric acid AUC was 0.706 in women.

**CONCLUSION:** Serum leptin levels can be useful biomarkers for evaluation of the risk of MetS independent of baseline obesity in both men and women. On the other hand, serum uric acid levels predicted the risk of MetS only in women.

Nutrition Research and Practice 2016;10(4):411-417; doi:10.4162/nrp.2016.10.4.411; pISSN 1976-1457 eISSN 2005-6168

**Keywords:** Metabolic syndrome, leptin, uric acid

## INTRODUCTION

Metabolic syndrome (MetS) is a cluster of interrelated metabolic risk factors that increase the risk of cardiovascular morbidity and mortality [1,2]. Frequently documented factors include insulin resistance or glucose intolerance, central/abdominal obesity, hypertension and dyslipidemia, particularly decreased high density lipoprotein cholesterol (HDL-C) and hypertriglyceridemia (high blood triglycerides (TG)) [1,3]. Although its pathogenesis has not been clearly determined, MetS is essentially regarded as a product of interaction between multiple genetic and environmental factors [4]. Interest in MetS has increased worldwide because of its increasing prevalence [5]. The prevalence of MetS varies considerably within and across different populations and increased with years [2,6-10], irrespective of the definition used [11,12]. However, there is an overwhelming ethical, medical, and economic imperative to identify individuals with MetS as early as possible, so that interventions and prognosis of new biomarkers may be helpful in preventing development of its complications including

diabetes and cardiovascular disease (CVD).

Leptin, a 16-kDa peptide hormone produced by the obese (ob) gene, is primarily expressed and secreted by adipocytes [13]. It plays a key role in the long-term regulation of body weight by suppressing appetite, stimulating thermogenesis, and increasing energy expenditure [14,15]. Elevation of plasma leptin has been suggested to play a role in the pathogenesis of MetS and its various components [16]. Hyperleptinemia involves activation of the hypothalamic-pituitary-adrenal axis, and/or increasing the levels of lipolytic hormones (glucocorticoids and catecholamines), thereby producing some components of MetS, including dyslipidemia, central obesity, and insulin resistance [16,17]. In addition, due to resistance to the activity of leptin in the pancreas, leptin fails to inhibit glucose-stimulated insulin secretion, which contributes to the development of hyperinsulinemia, insulin resistance, and type 2 diabetes mellitus (T2DM) [16-20]. Wallace *et al.* [21] and Li *et al.* [22] reported an association of higher leptin concentrations with increased risk of CVD, independent of BMI, age, lipids, blood pressure, and CRP levels. Association of elevated concentrations

The authors thank the staff of King Hussein Medical Center for their help.

<sup>§</sup> Corresponding Author: Ahmad A. Obeidat, Tel. 966-537148599, Fax. 966-143914547, Email. aobeidat@taibahu.edu.sa

Received: October 27, 2015, Revised: November 30, 2015, Accepted: January 19, 2016

This is an Open Access article distributed under the terms of the Creative Commons Attribution Non-Commercial License (<http://creativecommons.org/licenses/by-nc/3.0/>) which permits unrestricted non-commercial use, distribution, and reproduction in any medium, provided the original work is properly cited.

of circulating leptin with CVD risk factors, including hypertension, obesity, insulin resistance, and T2DM, has been reported [22,23].

Increased levels of uric acid (UA) have been reported with abdominal obesity [24]. Elevated serum insulin levels are thought to cause hyperuricemia in MetS, stimulating renal re-absorption of UA [24,25]. Conversely, one study reported that lowering UA levels also improves insulin sensitivity as well as hypertriglyceridemia, hypertension, and obesity [26]. Strong association of hyperuricemia with MetS has been reported in many studies [24,27-31], and it could be a good marker for MetS [32]. Strong association of elevated serum UA with the occurrence of individual components of MetS including obesity, hyperinsulinemia, impaired glucose tolerance, dyslipidemia, hypertension, and diabetes as well as pro-inflammatory markers has been reported [26,33-37]. This association between hyperuricemia and MetS raised the possibility that UA may have a role in the pathogenesis of the syndrome [26,31,36,37]. Hyperuricemia could have a role in the development of insulin resistance through urate-induced inhibition of endothelial nitric oxide, which may also result in endothelial dysfunction, hypertriglyceridemia, atherosclerosis, hypertension, and renal disease [26,34,36]. Hyperuricemia also blocks acetylcholine-mediated arterial dilation, further impairing endothelial function [37], and plays a role in the formation of free radicals and oxidative stress, as well as in platelet adhesiveness [24].

In Jordan, several studies have focused on estimating the prevalence of the major risk factors for CVD and have shown a high prevalence of diabetes mellitus, obesity, hypertension, and dyslipidemia [38-42]. To the best of our knowledge, there are only four available studies investigating MetS in a sample of Jordanians, which reported a high prevalence of MetS [38,43-45]. However, studies on the clustering of the metabolic risk factors in the form of MetS and comparing the different definitions in Jordanian groups are limited. Specificity and sensitivity of serum leptin and UA levels as predictors of MetS have not been evaluated. Accepted cut-off points for serum levels of leptin and UA have yet to be established. There is still a need to find a simple, practical, specific, and sensitive diagnostic and clinical tool to define those at greater risk of MetS. Therefore, the aim of this study was to evaluate serum levels of leptin and UA in terms of their specificity and sensitivity as predictors of MetS in the studied group.

## SUBJECTS AND METHODS

### Subjects

This study was conducted in the endocrinology clinics at King Hussein Medical Center (KHMC) in Amman, Jordan. In this study, 630 adult subjects (308 men and 322 women) aged between 20-70 years were recruited from visitors to the clinics, their companions and other volunteers. Pregnant and lactating women, subjects under 20 years or over 70 years of age, women with polycystic ovary syndrome, and subjects with type 1 diabetes mellitus were excluded. This study was approved by the Royal Medical Services Ethical Committee (ethical approval number TF3-1-7290-2009) and used the Helsinki Declaration. Informed consent was obtained from each participant at the start of the study by signing their own information sheets. Each

subject was asked to complete a questionnaire about his/her personal, social, and health history.

### Methods

The diagnosis of MetS was made according to the International Diabetes Federation (IDF) criteria-2005 [46]; subjects considered as having MetS had waist circumference (WC)  $\geq 94$  cm for men, and  $\geq 80$  cm for women, plus any two of the following risk factors: (1) TG  $\geq 150$  mg/dL, (2) high density lipoprotein cholesterol (HDL-C)  $< 40$  mg/dL for men, and  $< 50$  mg/dL for women, (3) blood pressure (BP)  $\geq 130$  mm Hg systolic BP or  $\geq 85$  mmHg diastolic BP, (4) fasting blood glucose (FBG)  $\geq 100$  mg/dL. Anthropometric measurements were performed and recorded following standard procedures [47,48]. The following anthropometric classifications were used: WC: normal  $< 94$  cm for men, and  $< 80$  cm for women, or high  $\geq 94$  cm for men, and  $\geq 80$  cm for women [46]. Blood pressure was measured using a standard mercury sphygmomanometer (Riester, Germany), after seating the subjects for at least 15 min. BP was considered normal if systolic BP  $< 130$  mmHg and diastolic BP  $< 85$  mmHg, or high if systolic BP  $\geq 130$  mmHg and/or diastolic BP  $\geq 85$  mmHg [46].

Blood samples were collected after overnight fasting for 10-12 hours and serum was obtained for biochemical analysis of blood variables using standard biochemical kits at the Princess Iman Center for Laboratory Research and Science/KHMC. The following laboratory measurements were performed and recorded for each subject and their values were taken in subsequent calculations: FBG, fasting blood insulin (FBI), leptin, serum UA, total cholesterol (TC), TG, and HDL-C. The insulin sensitivity was then calculated using Homeostasis Model Assessment (HOMA) according to the following formula [49]:  $HOMA = FBG \text{ (mmol/L)} \times FBI \text{ (}\mu\text{U/ml)}/22.5$ .

### Statistical analysis

Statistical analyses were performed using Statistical Program for Social Studies (SPSS), version 15.0 for Windows (SPSS Inc., Chicago, USA). Partial correlations were performed between the study variables and were expressed as correlation coefficients and probabilities, after controlling for age. Receiver operating characteristic (ROC) curves were used to determine the efficacy of biochemical indices as screening measures for correct identification of subjects with MetS and for selection of appropriate cut-off points for variables [50]. The optimal cut-off point for each index for men and women was determined using the Youden index, calculated as:  $\text{Youden index} = \text{maximum (sensitivity + specificity - 1)}$  [50].  $P$ -value of  $< 0.01$ ,  $< 0.05$ , and  $< 0.001$  was considered statistically significant.

## RESULTS

### General baseline characteristics of the study group

Table 1 shows means and standard error of mean (SEM) of anthropometric and clinical indices by gender for the study group. The study group included 630 subjects; 308 men (49%) and 322 women (51%). The study subjects ranged in age from 20 to 70 years, with a mean age of  $43.26 \pm 0.5$  years ( $42.2 \pm 0.8$  years in men and  $44.3 \pm 0.8$  years in women). Men had

**Table 1.** Baseline measurements by gender for the study group

Indices	Men (n = 308)	Women (n = 322)	Total (n = 630)
Age (yrs)	42.2 ± 0.8	44.3 ± 0.8	43.3 ± 0.5
WC (cm)**	101.8 ± 0.8	97.8 ± 1.1	99.8 ± 0.7
Systolic BP (mmHg)	132.7 ± 1.7	137 ± 1.4	134.9 ± 1.1
Diastolic BP (mmHg)***	79.6 ± 0.7	83.8 ± 0.6	81.7 ± 0.5
FBG (mg/dl)	124.3 ± 3.4	119.2 ± 3.3	121.7 ± 2.4
FBI (µU/ml)	11.2 ± 0.7	10.4 ± 0.5	10.8 ± 0.4
Leptin Level (ng/ml)***	10.6 ± 0.6	24 ± 0.9	17.5 ± 0.6
UA (mg/dl)***	5.5 ± 0.1	4.8 ± 0.1	5.1 ± 0.1
HDL-C (mg/dl)***	46.2 ± 0.8	50.7 ± 0.8	48.5 ± 0.6
TG (mg/dl)**	172.5 ± 4.5	153.9 ± 4.9	163 ± 3.4
HOMA	0.4 ± 0.0	0.4 ± 0.0	0.4 ± 0.0

\*  $P < 0.05$ , \*\*  $P < 0.01$ , \*\*\*  $P < 0.001$

Results are expressed as mean ± SEM.

WC: Waist Circumference; BP: Blood Pressure; FBG: Fasting Blood Glucose; FBI: fasting blood insulin; UA: uric acid; HDL-C: High Density Lipoprotein Cholesterol; TG: Triglycerides; HOMA: Homeostasis Model Assessment, calculated as<sup>49</sup>; FBG (mmol/L) × FBI (µU/ml)/22.5.

**Table 2.** Prevalence of metabolic syndrome risk factors plus leptin and uric acid in the study group

Indices	Men (n = 308)	Women (n = 322)
Increased WC (≥ 94 cm in men, ≥ 80 cm in women) <sup>1)</sup>	213 (69.2)	238 (73.9)
High BP (≥ 130/85 mmHg) <sup>1)</sup>	105 (34.1)	187 (57.6)
Elevated FBG (≥ 100 mg/dl) <sup>1)</sup>	133 (43.2)	134 (41.6)
Low HDL-C (< 40 mg/dl in men, < 50 mg/dl in women) <sup>1)</sup>	107 (34.7)	167 (51.9)
Hypertriglyceridemia (≥ 150 mg/dl) <sup>1)</sup>	180 (58.4)	136 (42.2)
High UA (> 7.0 mg/dl) <sup>2)</sup>	35 (11.4)	16 (5.0)
High Leptin (> 5.6 ng/ml in men, > 11.1 ng/ml in women) <sup>3)</sup>	202 (65.6)	260 (80.8)

Results are expressed as N / (% of Total).

WC: Waist Circumference; BP: Blood Pressure; FBG: Fasting Blood Glucose; UA: uric acid; HDL-C: High Density Lipoprotein Cholesterol.

<sup>1)</sup> Cutoff values used in the reference 46

<sup>2)</sup> Cutoff values used in the reference 24

<sup>3)</sup> Cutoff values used in the reference 18

significantly ( $P < 0.05$ ) higher values of WC, UA, and TG, while women had significantly ( $P < 0.05$ ) higher values of diastolic BP, leptin levels, and HDL-C. Age, systolic BP, FBG, FBI, and HOMA index were not statistically significant between men and women.

#### Prevalence of MetS risk factors plus leptin and uric acid in the study group

The distribution of MetS risk factors by gender is shown in Table 2. High leptin level was the most prevalent of biochemical indices in the total sample in approximately 73.3% (65.6% in men and 80.8% in women). Prevalence of the other indices in the total sample was 71.6% for increased WC, 46% for high BP, 42.4% for elevated FBG, 43.5% for low HDL-C, 50.2% for hypertriglyceridemia, and 8.1% for high uric acid levels.

**Table 3.** Partial Correlation Coefficients between leptin and uric acid and risk factors for metabolic syndrome controlled for age

Indices	Leptin	UA	
WC	Men	0.463***	0.127*
	Women	0.364***	0.173**
Systolic BP	Men	0.170**	-0.017
	Women	0.173**	0.174**
Diastolic BP	Men	0.239***	0.026
	Women	0.262***	0.135*
FBG	Men	0.189**	-0.085
	Women	-0.01	0.068
HDL-C	Men	-0.308***	-0.029
	Women	-0.056	-0.078
TG	Men	0.051	0.059
	Women	0.01	0.073
HOMA	Men	0.338***	0.027
	Women	0.223***	0.227***

\*  $P < 0.05$ , \*\*  $P < 0.01$ , \*\*\*  $P < 0.001$

UA: Uric Acid; WC: Waist Circumference; BP: Blood Pressure; FBG: Fasting Blood Glucose; HDL-C: High Density Lipoprotein Cholesterol; TG: Triglycerides; HOMA: Homeostasis Model Assessment.

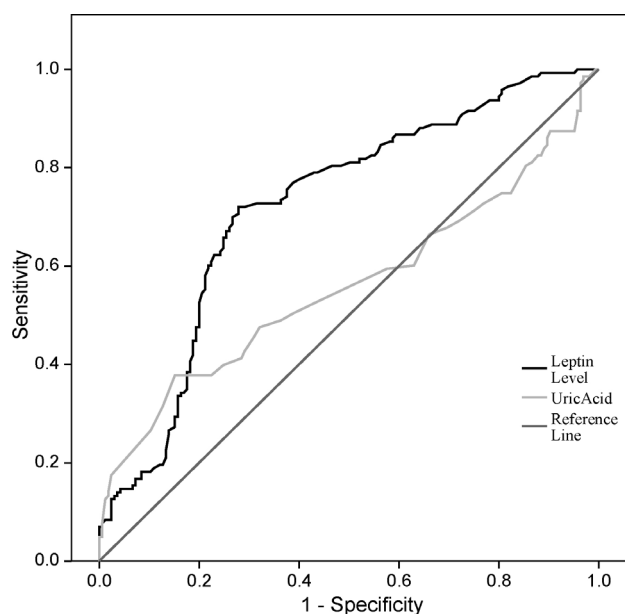
#### Association between leptin and uric acid and MetS components

Partial correlation coefficients between leptin and uric acid and risk factors for metabolic syndrome according to gender are shown in Table 3. Leptin level showed significant ( $P < 0.05$ ) correlation in men and women with WC (men:  $r = 0.463$ ,  $P < 0.001$ ; women:  $r = 0.364$ ,  $P < 0.001$ ), systolic BP (men:  $r = 0.170$ ,  $P < 0.01$ ; women:  $r = 0.173$ ,  $P < 0.01$ ), diastolic BP (men:  $r = 0.239$ ,  $P < 0.001$ ; women:  $r = 0.262$ ,  $P < 0.001$ ), and HOMA index (men:  $r = 0.338$ ,  $P < 0.001$ ; women:  $r = 0.223$ ,  $P < 0.001$ ), while it showed significant ( $P < 0.05$ ) correlation with FBG ( $r = 0.189$ ,  $P < 0.01$ ) and HDL-C ( $r = -0.308$ ,  $P < 0.001$ ) only in men, and did not show significant correlation with TG in either gender. Uric acid level showed significant ( $P < 0.05$ ) correlation with WC in men and women (men:  $r = 0.127$ ,  $P < 0.05$ ; women:  $r = 0.173$ ,  $P < 0.01$ ), and showed significant ( $P < 0.05$ ) correlation with systolic BP ( $r = 0.174$ ,  $P < 0.01$ ), diastolic BP ( $r = 0.135$ ,  $P < 0.05$ ), and HOMA index ( $r = 0.227$ ,  $P < 0.001$ ) only in women, and did not show significant correlation with FBG, HDL-C, and TG in either gender.

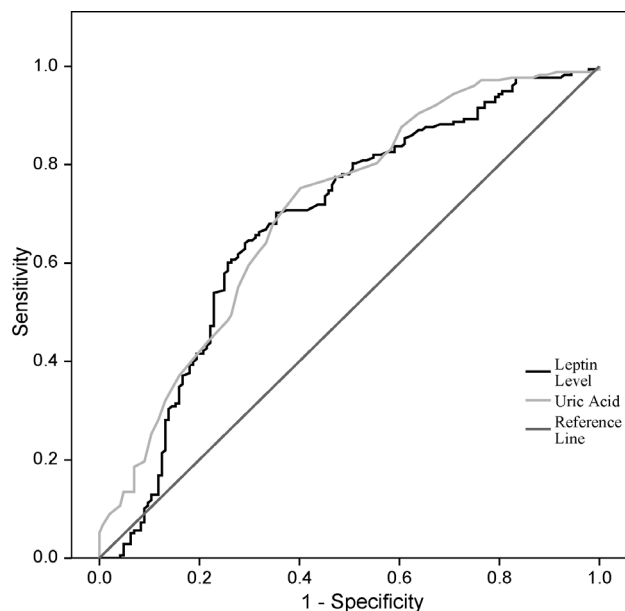
#### ROC curves for identification of subjects with MetS

For determining the efficacy in identification of subjects with MetS of leptin and uric acid levels, ROC curves demonstrated optimal cut-off points, AUC, sensitivity, specificity, and  $P$ -value (Fig. 1 and 2). For identification of men with MetS, AUC from the clinical and biochemical indices was highest for HDL-C (0.913), followed by FBG (0.869), systolic BP (0.853), diastolic BP (0.842), HOMA (0.841), TG (0.796), and leptin (0.721). AUC was low for UA and the  $P$ -value was not significant in men. Regarding women with MetS, AUC from the clinical and biochemical indices was highest for systolic BP (0.930), followed by diastolic BP (0.920), FBG (0.826), TG (0.823), HOMA (0.776), HDL (0.744), UA (0.706), and leptin (0.683).

The optimal cut-off points of clinical and biochemical indices, for identifying MetS, were as follows: for systolic BP 135 mmHg in men and 125 mmHg in women, for diastolic BP 82.5 mmHg



**Fig. 1.** Receiver operating characteristic curves of leptin and uric acid levels for identifying subjects with MS in men. Leptin (ng/ml) Optimal Cut-Off Point (7.55); AUC (0,721); Sensitivity % (0,72); Specificity % (0,721);  $P$ -value ( $<0,001$ ). Uric Acid (mg/dl) Optimal Cut-Off Point (6,35); AUC (0,56); Sensitivity % (0,378); Specificity % (0,848);  $P$ -value (NS). AUC: Area Under the Curve; NS, Not Significant.



**Fig. 2.** Receiver operating characteristic curves of leptin and uric acid levels for identifying subjects with MS in women. Leptin (ng/ml) Optimal Cut-Off Point (21.5); AUC (0,683); Sensitivity % (0,64); Specificity % (0,708);  $P$ -value ( $<0,001$ ). Uric Acid (mg/dl) Optimal Cut-Off Point (4,35); AUC (0,706); Sensitivity % (0,753); Specificity % (0,597);  $P$ -value ( $<0,001$ ). AUC: Area Under the Curve

in both men and women, for TG 181 mg/dl in men and 143 mg/dl in women, for FBG 102.5 mg/dl in men and 100.5 mg/dl in women, for HDL-C 51.5 mg/dl in men and 49.5 mg/dl in women, for HOMA 2.56 in men and 2.98 in women, for leptin 7.55 ng/ml in men and 21.50 ng/ml in women, for UA 6.35 mg/dl in men and 4.35 mg/dl in women.

## DISCUSSION

Extensive literature search did not find other studies using ROC analysis for prediction of MetS using serum leptin levels, and, to the best of our knowledge, the current study is the first to report sensitivity, specificity, and cut-off points for leptin and uric acid as predictors and risk factors of MetS in Arab countries.

In the current study significantly ( $P < 0.05$ ) higher mean serum leptin levels were observed in women than men, 24 ng/ml and 10.6 ng/ml, respectively (Table 1), with a  $P$ -value  $< 0.001$ . This is in agreement with previously published studies [23,51-53]. This gender variation is possibly due to testosterone effect in men to suppress leptin production in adipocytes [22,52,53]. In the current study, the prevalence of high leptin level ( $> 5.6$  ng/ml in men,  $> 11.1$  ng/ml in women) was 65.6% in men and 80.8% in women, Table 2.

Serum leptin level showed significant ( $P < 0.05$ ) correlation with risk factors for MetS in men, except for TG, Table 3. After controlling for age, partial correlation coefficients in men were highest between leptin levels and HOMA index, followed by low HDL-C, diastolic BP, FBG, and systolic BP. This is in accordance with other studies [15,18,53], which found that serum leptin levels showed the highest correlation with insulin resistance in men. In women, serum leptin level showed significant ( $P < 0.05$ ) correlation with systolic BP, diastolic BP, and HOMA index only. After controlling for age, partial correlation coefficients in women were highest between leptin levels and diastolic BP, followed by HOMA and systolic BP. There was no significant correlation with FBG, HDL-C, and TG. In their study, Lyoussi *et al.* [52] found no relationship between leptin levels and serum lipids, which coincides with the results of the current study. Conversely, Ingelsson *et al.* [23] reported that sex-adjusted leptin levels showed significant ( $P < 0.05$ ) positive correlation with all metabolic risk factors in the following descending order: TG, FBG, diastolic BP, and systolic BP, and low HDL-C. Yun *et al.* [16] and Hamed *et al.* [53] also reported high correlation of serum leptin level with triglycerides, in contrast with the results of the current study where serum leptin levels showed no significant correlation with TG.

The results of the current study (in both men and women) show a positive correlation between leptin levels and hypertension and insulin resistance, possibly due to its preserved effects on the kidneys and their sympathetic nervous system (leading to sodium retention) in addition to the effects on the hypothalamic-pituitary-adrenal axis (exaggerating insulin resistance) [20,37,54,55]. Similar results were obtained from several studies showing elevation of plasma leptin levels in individuals with insulin resistance and hypertension, independent of obesity levels [15,23,52,53]. Serum leptin levels could be a useful marker for evaluation of the risk of MetS independent of baseline obesity and other metabolic risk factors [16,18,21]. Similar results were obtained in the current study.

For identification of subjects with MetS, AUC from leptin ROC curves was 0.721 in men and 0.683 in women (Fig. 1 and 2), with a  $P$ -value  $< 0.001$  for both genders. The sensitivity of the test was 72% in men and 64% in women, and the specificity value was 72.1% in men and 70.8% in women. The optimal

cut-off point for leptin level was 7.55 ng/ml in men and 21.50 ng/ml in women. In a Chinese study including 2046 subjects of both genders, AUC for leptin was 0.754 in men and 0.707 in women [56]. Unfortunately, this study did not report values for sensitivity, specificity, and cut-off points. A more recent Taiwanese study reported that AUC for leptin was 0.676 in men and 0.627 in women [22].

Significantly higher mean serum UA levels were observed in men than in women, 5.5 mg/dl vs. 4.8 mg/dl, respectively, with a  $P$ -value  $< 0.001$ . This is in agreement with previously published studies [34,35,57], possibly due to the effects of estrogen or other steroid hormones [31]. However, many studies [29-31, 34,57] demonstrated that hyperuricemia was a more significant biomarker in women than in men as a risk factor for MetS. In the current study, the prevalence of high UA levels ( $> 7.0$  mg/dl) was 11.4% in men and 5% in women, Table 2. In women, UA levels were most significantly ( $P \leq 0.05$ ) correlated with HOMA index, followed by systolic BP and diastolic BP. However, UA levels did not show significant correlation with FBG, HDL-C, and TG. In men, UA levels did not show significant correlation with any MetS risk factor, Table 3. These results illustrate a positive correlation between hyperuricemia and insulin resistance and hypertension in women only, possibly due to its effects on the kidneys and the interaction between estrogen and other hormones has been suggested as a possible cause for gender differences [26,31]. This association has also been reported by other researchers [24,26,53]. Other studies reported positive correlation between hyperuricemia and other MetS components besides insulin resistance and hypertension [34,35,58-60]. In a prospective study including 9689 men and women, hyperuricemia also showed positive and significant association with higher risk of incident MetS, independent of age, obesity, and other MetS components and could be considered a solid predictor for the development and incidence of MetS [29]. A 1.6-fold increase in risk of MetS was reported in men with serum UA concentrations  $\geq 6.5$  mg/dl [29,37], while in women the risk of MetS was more than 2-folds higher when serum UA concentrations were  $\geq 4.6$  mg/dl [29]. Hyperuricemia has been shown to predict the risk of MetS independently of baseline obesity and other metabolic risk factors in many cross sectional studies [24,27,28,30,61], which was shown in the study results.

For identification of subjects with MetS, AUC from UA ROC curves was 0.56 in men and 0.706 in women (Fig. 1 and 2), with a  $P$ -value  $< 0.001$  only in women. In men, AUC was low and the  $P$ -value was not significant. The sensitivity of the test was 37.8% in men and 75.3% in women. The specificity value was 84.4% in men and 59.7% in women. The optimal cut-off point for UA level was 6.35 mg/dl in men and 4.35 mg/dl in women. In several studies hyperuricemia was more significant as a risk factor for MetS in women than in men [29,30,34,35, 57,62]. Similar results were obtained in the current study, which showed that hyperuricemia had a good diagnostic value in predicting the risk of MetS in women only. In addition, hyperuricemia had no significant predictive power for identification of MetS in men. Cut-off points for UA serum levels in predicting MetS have not been studied. Rho *et al.* [62] reported that women with UA levels  $> 5.7$  mg/dl had a significantly increased risk for MetS. Other studies adopted levels reported

to have significance in inducing gout to be the higher limits of normal or used normal ranges used in clinical practice. For example, hyperuricemia was defined in men as UA more than 7.0 mg/dl and in women as UA more than 6.0 mg/dl [34,39].

In conclusion, serum leptin levels can be a useful biomarker for evaluation of the risk of MetS independent of baseline obesity and other metabolic risk factors in both men and women. Serum UA level in men did not show significant correlation with any MetS risk factors and had no significant predictive power for the identification of MetS. In women serum UA levels showed significant positive correlation with insulin resistance and hypertension and appeared to be a good diagnostic tool in predicting the risk of MetS. Therefore, women with hyperuricemia should be screened for components of MetS. Hyperuricemia could replace insulin resistance as a cheap and easy test marker for MetS in women.

Due to small sample number and because studies reporting sensitivity, specificity, and cut-off points for leptin in predicting the risk of MetS are limited, the significance of the results of this study requires further investigations mainly in Arab countries.

## REFERENCES

1. Alberti KG, Eckel RH, Grundy SM, Zimmet PZ, Cleeman JI, Donato KA, Fruchart JC, James WP, Loria CM, Smith SC Jr; International Diabetes Federation Task Force on Epidemiology and Prevention; National Heart, Lung, and Blood Institute; American Heart Association; World Heart Federation; International Atherosclerosis Society; International Association for the Study of Obesity. Harmonizing the metabolic syndrome: a joint interim statement of the International Diabetes Federation Task Force on Epidemiology and Prevention; National Heart, Lung, and Blood Institute; American Heart Association; World Heart Federation; International Atherosclerosis Society; and International Association for the Study of Obesity. *Circulation* 2009;120:1640-5.
2. van Vliet-Ostaptchouk JV, Nuotio ML, Slagter SN, Doiron D, Fischer K, Foco L, Gaye A, Gögele M, Heier M, Hiekkalinna T, Joensuu A, Newby C, Pang C, Partinen E, Reischl E, Schwienbacher C, Tammesoo ML, Swertz MA, Burton P, Ferretti V, Fortier I, Giepmans L, Harris JR, Hillege HL, Holmen J, Jula A, Kootstra-Ros JE, Kvaløy K, Holmen TL, Männistö S, Metspalu A, Midthjell K, Murtagh MJ, Peters A, Pramstaller PP, Saaristo T, Salomaa V, Stolk RP, Uusitupa M, van der Harst P, van der Klauw MM, Waldenberger M, Perola M, Wolfenbutter BH. The prevalence of metabolic syndrome and metabolically healthy obesity in Europe: a collaborative analysis of ten large cohort studies. *BMC Endocr Disord* 2014;14:9-22.
3. Gallagher EJ, LeRoith D, Karnieli E. The metabolic syndrome-from insulin resistance to obesity and diabetes. *Endocrinol Metab Clin North Am* 2008;37:559-79.
4. Romao I, Roth J. Genetic and environmental interactions in obesity and type 2 diabetes. *J Am Diet Assoc* 2008;108:S24-8.
5. World Health Organization (WHO). Definition, Diagnosis and Classification of Diabetes Mellitus and its Complications. Report of a WHO Consultation. Geneva: World Health Organization; 1999.
6. Mabry RM, Reeves MM, Eakin EG, Owen N. Gender differences in prevalence of the metabolic syndrome in Gulf Cooperation Council Countries: a systematic review. *Diabet Med* 2010;27:593-7.

7. Beltrán-Sánchez H, Harhay MO, Harhay MM, McElligott S. Prevalence and trends of metabolic syndrome in the adult U.S. population, 1999-2010. *J Am Coll Cardiol* 2013;62:697-703.
8. Swinburn BA, Sacks G, Hall KD, McPherson K, Finegood DT, Moodie ML, Gortmaker SL. The global obesity pandemic: shaped by global drivers and local environments. *Lancet* 2011;378:804-14.
9. Ogden CL, Carroll MD, Kit BK, Flegal KM. Prevalence of obesity in the United States, 2009-2010. *NCHS Data Brief* 2012:1-8.
10. Manjunath D, Uthappa CK, Kattula SR, Allam RR, Chava N, Oruganti G. Metabolic syndrome among urban Indian young adults: prevalence and associated risk factors. *Metab Syndr Relat Disord* 2014;12:381-9.
11. Ford ES, Giles WH. A comparison of the prevalence of the metabolic syndrome using two proposed definitions. *Diabetes Care* 2003;26:575-81.
12. Chuengsamarn S, Rattanamongkoulgul S, Villarreal A. Association between metabolic syndrome and risk of cardiovascular disease, using different criteria and stratified by sex. *Int J Diabetes Mellit* 2010;2:78-82.
13. van Beek EA, Bakker AH, Kruij PM, Hofker MH, Saris WH, Keijzer J. Intra- and interindividual variation in gene expression in human adipose tissue. *Pflugers Arch* 2007;453:851-61.
14. Kelesidis T, Kelesidis I, Chou S, Mantzoros CS. Narrative review: the role of leptin in human physiology: emerging clinical applications. *Ann Intern Med* 2010;152:93-100.
15. Özçelik E, Uslu S, Kebapçı N, Kara M, Dokumacıoğlu A, Musmul A. Interrelations of serum leptin levels with adrenocorticotrophic hormone, basal cortisol and dehydroepiandrosterone sulphate levels in patients with metabolic syndrome. *Diabetes Metab Syndr* 2010;4:13-7.
16. Yun JE, Kimm H, Jo J, Jee SH. Serum leptin is associated with metabolic syndrome in obese and nonobese Korean populations. *Metabolism* 2010;59:424-9.
17. Björntorp P. Hypertension and the Metabolic Syndrome: closely related central origin? *Int Congr Ser* 2002;1241:81-6.
18. Ukkola O, Kesäniemi YA. Leptin and high-sensitivity C-reactive protein and their interaction in the metabolic syndrome in middle-aged subjects. *Metabolism* 2007;56:1221-7.
19. Martin SS, Qasim A, Reilly MP. Leptin resistance: a possible interface of inflammation and metabolism in obesity-related cardiovascular disease. *J Am Coll Cardiol* 2008;52:1201-10.
20. Thorand B, Zierer A, Baumert J, Meisinger C, Herder C, Koenig W. Associations between leptin and the leptin / adiponectin ratio and incident Type 2 diabetes in middle-aged men and women: results from the MONICA / KORA Augsburg study 1984-2002. *Diabet Med* 2010;27:1004-11.
21. Wallace AM, McMahon AD, Packard CJ, Kelly A, Shepherd J, Gaw A, Sattar N; WOSCOPS Executive Committee. Plasma leptin and the risk of cardiovascular disease in the west of Scotland coronary prevention study (WOSCOPS). *Circulation* 2001;104:3052-6.
22. Li WC, Hsiao KY, Chen IC, Chang YC, Wang SH, Wu KH. Serum leptin is associated with cardiometabolic risk and predicts metabolic syndrome in Taiwanese adults. *Cardiovasc Diabetol* 2011;10:36-42.
23. Ingelsson E, Larson MG, Yin X, Wang TJ, Meigs JB, Lipinska I, Benjamin EJ, Keaney JF Jr, Vasani RS. Circulating ghrelin, leptin, and soluble leptin receptor concentrations and cardiometabolic risk factors in a community-based sample. *J Clin Endocrinol Metab* 2008;93:3149-57.
24. Numata T, Miyatake N, Wada J, Makino H. Comparison of serum uric acid levels between Japanese with and without metabolic syndrome. *Diabetes Res Clin Pract* 2008;80:e1-5.
25. de Oliveira EP, Burini RC. High plasma uric acid concentration: causes and consequences. *Diabetol Metab Syndr* 2012;4:12-9.
26. Nakagawa T, Hu H, Zharikov S, Tuttle KR, Short RA, Glushakova O, Ouyang X, Feig DI, Block ER, Herrera-Acosta J, Patel JM, Johnson RJ. A causal role for uric acid in fructose-induced metabolic syndrome. *Am J Physiol Renal Physiol* 2006;290:F625-31.
27. Lee MS, Lin SC, Chang HY, Lyu LC, Tsai KS, Pan WH. High prevalence of hyperuricemia in elderly Taiwanese. *Asia Pac J Clin Nutr* 2005;14:285-92.
28. Ford ES, Li C, Cook S, Choi HK. Serum concentrations of uric acid and the metabolic syndrome among US children and adolescents. *Circulation* 2007;115:2526-32.
29. Sui X, Church TS, Meriwether RA, Lobelo F, Blair SN. Uric acid and the development of metabolic syndrome in women and men. *Metabolism* 2008;57:845-52.
30. Chiou WK, Wang MH, Huang DH, Chiu HT, Lee YJ, Lin JD. The relationship between serum uric acid level and metabolic syndrome: differences by sex and age in Taiwanese. *J Epidemiol* 2010;20:219-24.
31. Liu M, He Y, Jiang B, Wu L, Yang S, Wang Y, Li X. Association between serum uric acid level and metabolic syndrome and its sex difference in a Chinese community elderly population. *Int J Endocrinol* 2014;754678.
32. Billiet L, Doaty S, Katz JD, Velasquez MT. Review of hyperuricemia as new marker for metabolic syndrome. *ISRN Rheumatol* 2014:852954.
33. Sheikhabahaei S, Fotouhi A, Hafezi-Nejad N, Nakhjavani M, Esteghamati A. Serum uric acid, the metabolic syndrome, and the risk of chronic kidney disease in patients with type 2 diabetes. *Metab Syndr Relat Disord* 2014;12:102-9.
34. Lin JD, Chiou WK, Chang HY, Liu FH, Weng HF. Serum uric acid and leptin levels in metabolic syndrome: a quandary over the role of uric acid. *Metabolism* 2007;56:751-6.
35. Liu PW, Chang TY, Chen JD. Serum uric acid and metabolic syndrome in Taiwanese adults. *Metabolism* 2010;59:802-7.
36. Longo-Mbenza B, Mvindu HN, Phanzu BK, On'Kin JB, Nkakudulu Bikuku H, Nge Okwe A. Is uric acid a surrogate and additional component of incident metabolic syndrome, insulin resistance among inactive Central Africans? *Diabetes Metab Syndr* 2010;4:74-81.
37. Kaur J. A comprehensive review on metabolic syndrome. *Cardiol Res Pract* 2014;943162.
38. Obeidat AA, Ahmad MN, Haddad FH, Azzeh FS. Evaluation of several anthropometric indices of obesity as predictors of metabolic syndrome in Jordanian adults. *Nutr Hosp* 2015;32:667-77.
39. Ajlouni K, Jaddou H, Batieha A. Diabetes and impaired glucose tolerance in Jordan: prevalence and associated risk factors. *J Intern Med* 1998;244:317-23.
40. Centers for Disease Control and Prevention (CDC). Prevalence of selected risk factors for chronic disease--Jordan, 2002. *MMWR Morb Mortal Wkly Rep* 2003;52:1042-4.
41. Centers for Disease Control and Prevention (CDC). Assessing risk factors for chronic disease--Jordan, 2004. *MMWR Morb Mortal Wkly Rep* 2006;55:653-5.
42. Hammoudeh AJ, Al-Tarawneh H, Elharassis A, Haddad J, Mahadeen

- Z, Badran N, Izraiq M, Al-Mousa E. Prevalence of conventional risk factors in Jordanians with coronary heart disease: the Jordan Hyperlipidemia and Related Targets Study (JoHARTS). *Int J Cardiol* 2006;110:179-83.
43. Khader Y, Bateiha A, El-Khateeb M, Al-Shaikh A, Ajlouni K. High prevalence of the metabolic syndrome among Northern Jordanians. *J Diabetes Complications* 2007;21:214-9.
44. Al-Odat AZ, Ahmad MN, Haddad FH. References of anthropometric indices of central obesity and metabolic syndrome in Jordanian men and women. *Diabetes Metab Syndr* 2012;6:15-21.
45. Obeidat BA, Al-Shami EK, Abdul-Razzak KK, Khader YS. Predictors of metabolic syndrome among employees: a study from Jordan. *Food Nutr Sci* 2012;3:669-77.
46. International Diabetes Federation. The IDF consensus worldwide definition of the metabolic syndrome [Internet]. Brussels: International Diabetes Federation Communications; 2006 March 19 [cited 2014 October 11]. Available from: [http://www.idf.org/webdata/docs/IDF\\_Meta\\_def\\_final.pdf](http://www.idf.org/webdata/docs/IDF_Meta_def_final.pdf).
47. Centers for Disease Control and Prevention. National Health and Nutrition Examination Survey: anthropometry and physical activity monitor procedures manual [Internet]. Atlanta (GA): Centers for Disease Control and Prevention; 2005 January 1 [cited 2014 October 11]. Available from: [http://www.cdc.gov/nchs/data/nhanes/nhanes\\_05\\_06/BM.pdf](http://www.cdc.gov/nchs/data/nhanes/nhanes_05_06/BM.pdf).
48. Lee RD, Nieman DC. Nutritional Assessment. 5th ed. New York (NY): McGraw-Hill Education; 2010.
49. Chen H, Sullivan G, Quon MJ. Assessing the predictive accuracy of QUICKI as a surrogate index for insulin sensitivity using a calibration model. *Diabetes* 2005;54:1914-25.
50. Akobeng AK. Understanding diagnostic tests 3: receiver operating characteristic curves. *Acta Paediatr* 2007;96:644-7.
51. Canatan H, Bakan I, Akbulut M, Baydas G, Halifeoglu I, Gursu MF. Comparative analysis of plasma leptin levels in both genders of patients with essential hypertension and healthy subjects. *Endocr Res* 2004;30:95-105.
52. Lyoussi B, Ragala MA, Mguil M, Chraibi A, Israili ZH. Gender-specific leptinemia and its relationship with some components of the metabolic syndrome in Moroccans. *Clin Exp Hypertens* 2005;27:377-94.
53. Hamed M, Haddad SH, AL Quobili F. Serum uric acid and leptin levels in metabolic syndrome. *Int J Pharm Sci Rev Res* 2013;20:21-7.
54. Correia ML, Haynes WG. Obesity-related hypertension: is there a role for selective leptin resistance? *Curr Hypertens Rep* 2004;6:230-5.
55. Lee CY, Lee CH, Tsai S, Huang CT, Wu MT, Tai SY, Lin FF, Chao NC, Chang CJ. Association between serum leptin and adiponectin levels with risk of insulin resistance and impaired glucose tolerance in non-diabetic women. *Kaohsiung J Med Sci* 2009;25:116-25.
56. Zhuo Q, Wang Z, Fu P, Piao J, Tian Y, Xu J, Yang X. Comparison of adiponectin, leptin and leptin to adiponectin ratio as diagnostic marker for metabolic syndrome in older adults of Chinese major cities. *Diabetes Res Clin Pract* 2009;84:27-33.
57. Chien KL, Hsu HC, Sung FC, Su TC, Chen MF, Lee YT. Hyperuricemia as a risk factor on cardiovascular events in Taiwan: The Chin-Shan Community Cardiovascular Cohort Study. *Atherosclerosis* 2005;183:147-55.
58. Millionis HJ, Kakafika AI, Tsouli SG, Athyros VG, Bairaktari ET, Seferiadis KI, Elisaf MS. Effects of statin treatment on uric acid homeostasis in patients with primary hyperlipidemia. *Am Heart J* 2004;148:635-40.
59. Solymoss BC, Bourassa MG, Campeau L, Sniderman A, Marcil M, Lespérance J, Lévesque S, Varga S. Effect of increasing metabolic syndrome score on atherosclerotic risk profile and coronary artery disease angiographic severity. *Am J Cardiol* 2004;93:159-64.
60. Yoo TW, Sung KC, Shin HS, Kim BJ, Kim BS, Kang JH, Lee MH, Park JR, Kim H, Rhee EJ, Lee WY, Kim SW, Ryu SH, Keum DG. Relationship between serum uric acid concentration and insulin resistance and metabolic syndrome. *Circ J* 2005;69:928-33.
61. Ishizaka N, Ishizaka Y, Toda E, Nagai R, Yamakado M. Association between serum uric acid, metabolic syndrome, and carotid atherosclerosis in Japanese individuals. *Arterioscler Thromb Vasc Biol* 2005;25:1038-44.
62. Rho YH, Woo JH, Choi SJ, Lee YH, Ji JD, Song GG. Association between serum uric acid and the Adult Treatment Panel III-defined metabolic syndrome: results from a single hospital database. *Metabolism* 2008;57:71-6.