

RESEARCH

Open Access



Immune responses upon *Campylobacter jejuni* infection of secondary abiotic mice lacking nucleotide-oligomerization-domain-2

Stefan Bereswill¹, Ursula Grundmann¹, Marie E. Alutis¹, André Fischer¹, Anja A. Kühl² and Markus M. Heimesaat^{1*}

Abstract

Background: *Campylobacter jejuni* infections are of rising importance worldwide. Given that innate immune receptors including nucleotide-oligomerization-domain-2 (Nod2) are essentially involved in combating enteropathogenic infections, we here surveyed the impact of Nod2 in murine campylobacteriosis.

Methods and results: In order to overcome physiological colonization resistance preventing from *C. jejuni* infection, we generated secondary abiotic Nod2^{-/-} and wildtype (WT) mice by broad-spectrum antibiotic treatment. Mice were then perorally infected with *C. jejuni* strain 81-176 on 2 consecutive days and could be stably colonized by the pathogen at high loads. Notably, Nod2 deficiency did not affect gastrointestinal colonization properties of *C. jejuni*. Despite high intestinal pathogenic burdens mice were virtually uncompromised and exhibited fecal blood in single cases only. At day 7 postinfection (p.i.) similar increases in numbers of colonic epithelial apoptotic cells could be observed in mice of either genotype, whereas *C. jejuni* infected Nod2^{-/-} mice displayed more distinct regenerative properties in the colon than WT controls. *C. jejuni* infection was accompanied by increases in distinct immune cell populations such as T lymphocytes and regulatory T cells in mice of either genotype. Increases in T lymphocytes, however, were less pronounced in large intestines of Nod2^{-/-} mice at day 7 p.i. when compared to WT mice, whereas colonic numbers of B lymphocytes were elevated in WT controls only upon *C. jejuni* infection. At day 7 p.i., colonic pro-inflammatory mediators including nitric oxide, TNF, IFN- γ and IL-22 increased more distinctly in Nod2^{-/-} as compared to WT mice, whereas *C. jejuni* induced IL-23p19 and IL-18 levels were lower in the large intestines of the former. Converse to the colon, however, ileal concentrations of nitric oxide, TNF, IFN- γ , IL-6 and IL-10 were lower in Nod2^{-/-} as compared to WT mice at day 7 p.i. Even though MUC2 was down-regulated in *C. jejuni* infected Nod2^{-/-} mice, this did not result in increased pathogenic translocation from the intestinal tract to extra-intestinal compartments.

Conclusion: In secondary abiotic mice, Nod2 signaling is involved in the orchestrated host immune responses upon *C. jejuni* infection, but does not control pathogen loads in the gastrointestinal tract.

Keywords: *Campylobacter jejuni*, Nucleotide-oligomerization-domain-2 (Nod2), Secondary abiotic (gnotobiotic) mice, Bacterial colonization properties, Pro-inflammatory cytokines, Adaptive immune cells, IL-23/IL-22/IL-18 axis, Apoptosis, Bacterial translocation, Mucin-2

Background

Human *Campylobacter jejuni* infections have been progressively rising during the past decades [1–3]. A

plethora of wild and domestic animals harbor *C. jejuni* as commensal bacteria within their intestinal microbiota. Upon zoonotic transmission from livestock animals humans become infected via consumption of contaminated meat or surface water [4–6]. Infected individuals may be asymptomatic, present with rather mild malaise and watery diarrhea or with full blown disease characterized by acute enterocolitis with abdominal cramps,

*Correspondence: markus.heimesaat@charite.de

¹ Department of Microbiology and Hygiene, Charité-University Medicine Berlin, CCS, Campus Benjamin Franklin, FEM, Garystr. 5, 14195 Berlin, Germany

Full list of author information is available at the end of the article

fever, and bloody, inflammatory diarrhea lasting for days or even weeks [1]. Whereas disease is self-limiting in the vast majority of cases, post-infectious sequelae affecting the joints (i.e. reactive arthritis), the nervous system (i.e. Guillain–Barré syndrome, Miller Fisher syndrome and Bickerstaff encephalitis) or the intestinal tract (i.e. irritable bowel syndrome) might arise sporadically [1, 3, 7]. Susceptibility to pathogenic infection is highly depending on the distinct intestinal microbiota composition of the respective host. Conventionally colonized adult mice, for instance, are protected from *C. jejuni* infection and expel the pathogen within a few days even upon peroral high dose infection [8–10]. Modification of the murine microbiota by broad-spectrum antibiotic treatment, however, compromises physiological colonization resistance and facilitates stable gastrointestinal *C. jejuni* infection of the resulting secondary abiotic mice at high loads [8, 10, 11]. In turn, secondary abiotic mice present with distinct *C. jejuni* induced pro-inflammatory immune and colonic apoptotic responses thereby mimicking key features of human campylobacteriosis [6, 8]. Hence, the secondary abiotic mouse model has been proven well-suitable to dissect enteropathogenic-host interactions in vivo [10, 11].

Host immune responses are pivotal for combating enteropathogenic including *C. jejuni* infections. The nucleotide-binding oligomerization domain (Nod)-like receptors comprise an important family of signaling molecules sensing microbial products and damage-associated factors and thus contributing to innate immunity [12]. Among these, Nod2 is expressed by innate (such as macrophages and dendritic cells) and adaptive immune cell subsets including T lymphocytes as well as by Paneth cells [13–15]. Upon activation by muramyl dipeptide (MDP), a constituent of bacterial peptidoglycans, Nod2 confers resistance to a broad variety of bacterial species [12, 16–18]. To date it is still unclear, however, whether Nod2 can also sense other microbial molecules or whether it rather acts as a mere signaling partner [19]. The importance of Nod2 in sensing and elimination of enteropathogens have been demonstrated in vivo, given that Nod2^{-/-} mice were more susceptible to *Listeria monocytogenes* or *Yersinia pseudotuberculosis* infection [20, 21].

In the present study we investigated the impact of Nod2 in *C. jejuni* infection of secondary abiotic mice. We addressed whether pathogenic colonization properties, potential translocation of viable bacteria to extra-intestinal compartments, infection induced macroscopic and microscopic sequelae, and pro-inflammatory intestinal as well as systemic immune responses were affected by Nod2 signaling in *C. jejuni* infected secondary abiotic mice.

Methods

Ethics statement

All animal experiments were conducted according to the European Guidelines for animal welfare (2010/63/EU) with approval of the commission for animal experiments headed by the “Landesamt für Gesundheit und Soziales” (LaGeSo, Berlin, registration number G0135/10). Animal welfare was monitored twice daily by assessment of clinical conditions.

Generation of secondary abiotic mice and *C. jejuni* infection

Female Nod2 deficient (Nod2^{-/-}) mice (in C57BL/6j background) and matched wildtype mice were reared and maintained within the same specific pathogen free (SPF) unit of the Forschungseinrichtungen für Experimentelle Medizin (FEM, Charité-University Medicine Berlin). In order to overcome physiological colonization resistance and thus assure stable pathogenic colonization of the gastrointestinal tract [8], secondary abiotic (i.e. gnotobiotic) mice virtually lacking an intestinal microbiota were generated upon broad-spectrum antibiotic treatment for at least 8 weeks as described earlier [8, 22]. Three days before infection, the antibiotic cocktail was replaced by sterile water. Mice were then perorally infected with 10⁹ colony forming units (CFU) of viable *C. jejuni* strain 81-176 in a volume of 0.3 mL phosphate buffered saline (PBS; Gibco, life technologies, UK) on two consecutive days (days 0 and 1) by gavage as described previously [8]. To prevent mice from contaminations, animals were continuously kept in a sterile environment (autoclaved food and drinking water or sterile antibiotic cocktail) and handled under strict aseptic conditions.

Clinical conditions

To assess clinical signs of *C. jejuni* induced infection a standardized cumulative clinical score (maximum 12 points), addressing the occurrence of blood in feces (0: no blood; 2: microscopic detection of blood by the Guajac method using Haemocult, Beckman Coulter/PCD, Germany; 4: macroscopic blood visible), diarrhea (0: formed feces; 2: pasty feces; 4: liquid feces), and the clinical aspect (0: normal; 2: ruffled fur, less locomotion; 4: isolation, severely compromised locomotion, pre-final aspect) was used on a daily basis as described earlier [23–25].

Sampling procedures and histopathology

Mice were sacrificed at day 7 postinfection (p.i.) by isoflurane treatment (Abbott, Greifswald, Germany). Intestinal ex vivo biopsies were asserved under sterile conditions and collected from each mouse in parallel for microbiological, immunohistopathological and immunological analyses. Histopathological changes

were determined in samples derived from the colon that were immediately fixed in 5% formalin and embedded in paraffin. Sections (5 μm) were stained with hematoxylin and eosin (H&E), examined by light microscopy (magnification $\times 100$ and $\times 400$) and histopathological changes quantitatively assessed applying a standardized histopathological scoring system (maximum 4 points) as described previously [26].

Immunohistochemistry

In situ immunohistochemical analysis of colonic paraffin sections was performed as stated elsewhere [24, 25, 27, 28]. Primary antibodies against cleaved caspase-3 (Asp175, Cell Signaling, USA, 1:200), Ki67 (TEC3; Dako, Denmark; 1:100), CD3 (#N1580; Dako; 1:10), FOXP3 (FJK-16s; eBioscience, Germany; 1:100) and B220 (eBioscience; 1:200) were used. For each animal, the average number of positively stained cells within at least six high power fields (HPF, 0.287 mm^2 , $\times 400$ magnification) were determined lightmicroscopically by a blinded investigator.

Quantitative analysis of bacterial colonization

Viable *C. jejuni* were quantitatively assessed in feces over time p.i. or at time of necropsy (i.e. day 7 p.i.) in luminal samples taken from the gastrointestinal tract (i.e. stomach, duodenum, ileum and colon) and in homogenates of ex vivo biosies taken from mesenteric lymph nodes (MLN), spleen, liver and kidney, dissolved in sterile PBS and serial dilutions streaked onto Karmali- and Columbia-Agar supplemented with 5% sheep blood (Oxoid) for two days at 37 °C under microaerobic conditions using CampyGen gas packs (Oxoid). The respective weights of fecal or tissue samples were determined by the difference of the sample weights before and after asservation. The detection limit of viable pathogens was ≈ 100 CFU per g.

Cytokine detection in supernatants of intestinal and extra-intestinal ex vivo biopsies

Colonic and ileal ex vivo biopsies were cut longitudinally and washed in PBS. MLN, spleen or strips of approximately 1 cm^2 respective intestinal tissues were placed in 24-flat-bottom well culture plates (Nunc, Wiesbaden, Germany) containing 500 μL serum-free RPMI 1640 medium (Gibco, life technologies, Paisley, UK) supplemented with penicillin (100 U/mL) and streptomycin (100 $\mu\text{g}/\text{mL}$; PAA Laboratories). After 18 h at 37 °C, culture supernatants were tested for TNF, IFN- γ , MCP-1, IL-12p70, IL-6 and IL-10 by the Mouse Inflammation Cytometric Bead Assay (CBA; BD Biosciences, Heidelberg, Germany) on a BD FACSCanto II flow cytometer (BD Biosciences). Nitric oxide (NO) was measured by Griess reaction as described earlier [22].

Real-time PCR

RNA was isolated from snap frozen colonic ex vivo biopsies, reverse transcribed and analyzed as described previously [29]. Murine mucin-2 (MUC2), IL-23p19, IL-22, and IL-18 mRNA expression was analyzed using Light Cycler Data Analysis Software (Roche). The mRNA of the housekeeping gene for hypoxanthine-phosphoribosyltransferase (HPRT) was used as reference, and the mRNA expression levels of the individual genes were normalized to the lowest measured value and expressed as fold expression (Arbitrary Units).

Statistical analysis

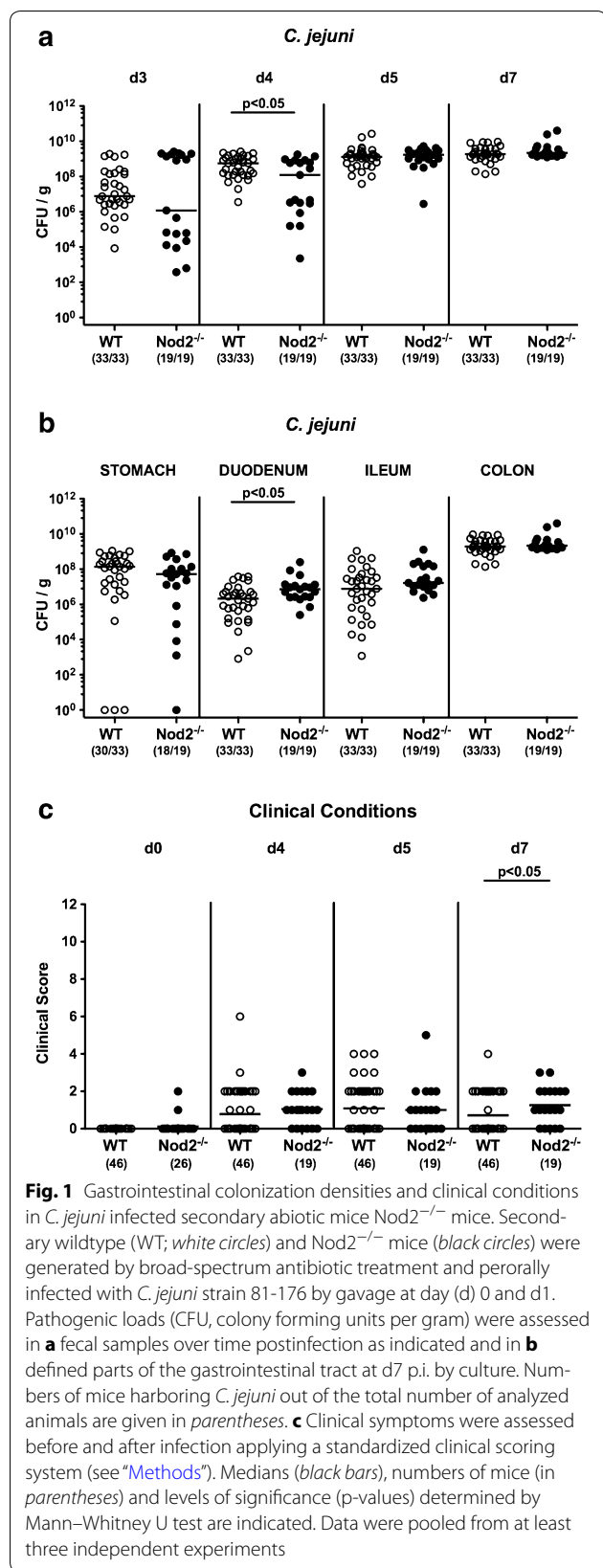
Medians, means and levels of significance were determined using Mann–Whitney test (GraphPad Prism v5, La Jolla, CA, USA) as indicated. Two-sided probability (p) values ≤ 0.05 were considered significant.

Results

Campylobacter jejuni colonization alongside the gastrointestinal tract and clinical conditions in secondary abiotic Nod2^{-/-} mice

Given that the intestinal microbiota prevents the murine host from stable *C. jejuni* infection [8, 10], we generated secondary abiotic Nod2^{-/-} mice and WT counterparts by broad-spectrum antibiotic treatment in order to overcome physiological colonization resistance. Following peroral infection with 10^9 viable bacteria of *C. jejuni* strain 81-176 on 2 consecutive days (i.e. days 0 and 1) by gavage, the pathogen could stably establish within the gastrointestinal tract with highest loads of approximately 10^9 CFU per g in the colon at day 7 p.i. (Fig. 1a, b). Nod2 did not impact colonization properties in a biologically relevant fashion as indicated by similar intestinal *C. jejuni* loads in infected Nod2^{-/-} and WT mice (Fig. 1a, b). Fecal *C. jejuni* counts were slightly lower (approximately one order of magnitude) in Nod2^{-/-} as compared to WT mice at day 4 p.i. ($p < 0.05$; Fig. 1a), whereas at necropsy, duodenal pathogenic burdens were even marginally higher (approximately 0.5 log) in the former ($p < 0.05$; Fig. 1b).

We further surveyed whether Nod2 deficiency had an impact on clinical conditions upon murine *C. jejuni* infection. To address this, we applied a cumulative clinical score assessing gross clinical aspects of mice, fecal consistency and abundance of blood in stool samples. Overall, mice of either genotype were virtually uncompromised upon *C. jejuni* infection (Fig. 1c). As early as 5 days p.i., 23.9 and 10.5% of WT and Nod2^{-/-} mice, respectively, displayed bloody stool microscopically or even macroscopically, whereas respective fecal blood positivity rates were 8.7 and 10.5% at day 7 p.i. (Additional file 1: Figure S1).

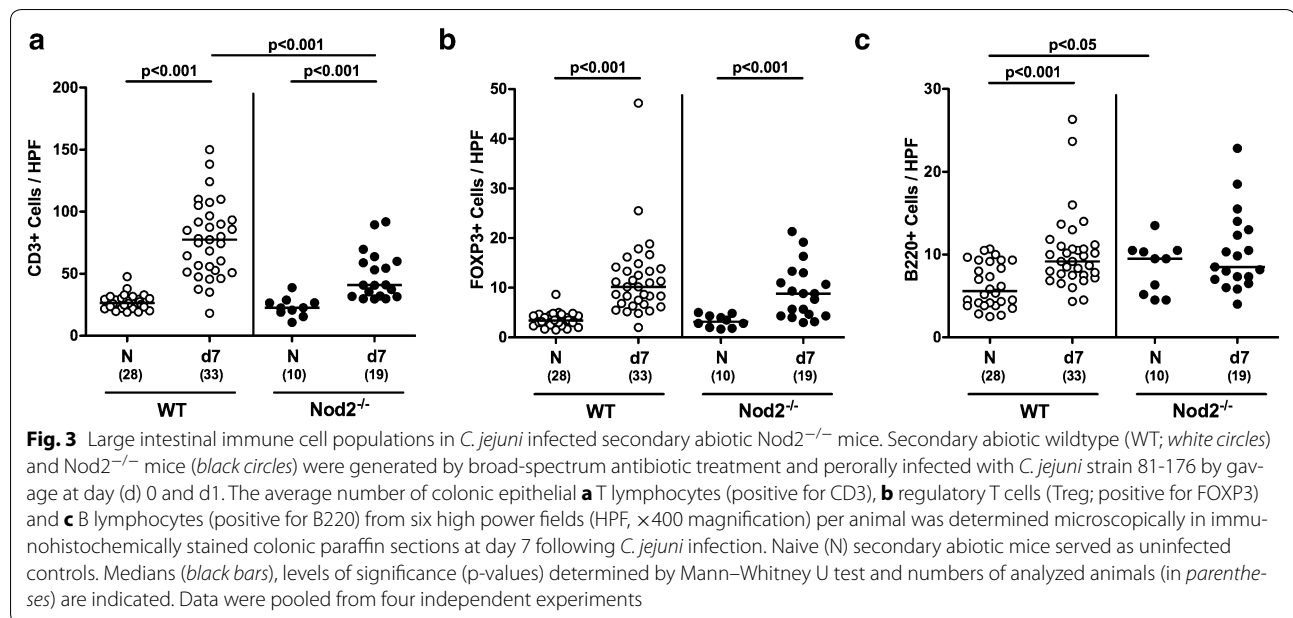
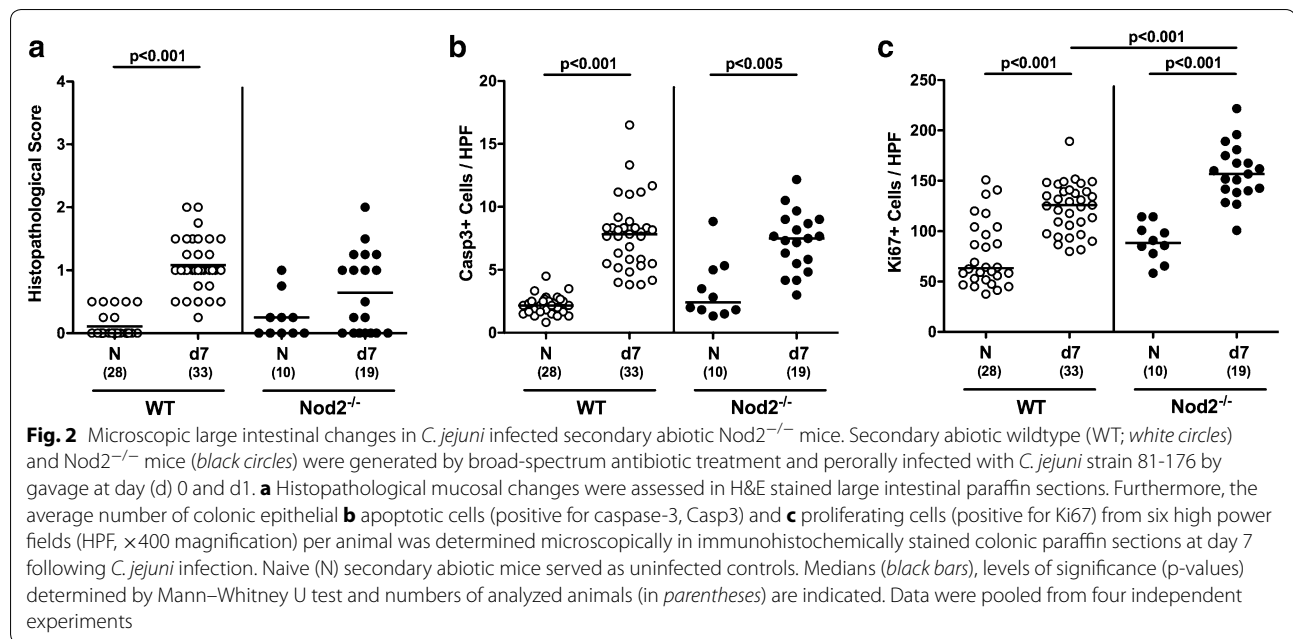


Microscopic inflammatory changes in large intestines of *C. jejuni* infected secondary abiotic *Nod2*^{-/-} mice

We next determined potential *Nod2* dependent histopathological sequelae of *C. jejuni* infection in colonic paraffin sections applying a standardized histopathological scoring system. Slightly higher histopathological scores could be assessed in the large intestines of *C. jejuni* infected as compared to naive WT mice indicative for single isolated to mild scattered cell infiltrates within the mucosa ($p < 0.001$; Fig. 2a; Additional file 2: Figure S2). In *Nod2*^{-/-} mice a trend towards *C. jejuni* induced increases in colonic histopathological scores could be observed at day 7 p.i. (n.s. versus naive; Fig. 2a; Additional file 2: Figure S2). Since apoptosis constitutes an established marker for the microscopic evaluation of intestinal inflammation in murine campylobacteriosis [8], we stained colonic paraffin sections with caspase-3 antibodies. As compared to naive counterparts, colonic epithelial apoptotic cell numbers increased more than threefold until day 7 following *C. jejuni* infection of *Nod2*^{-/-} and WT mice ($p < 0.005$ and $p < 0.001$, respectively; Fig. 2b; Additional file 3: Figure S3). Increases in apoptotic cell numbers were accompanied by elevated colonic epithelial Ki67 positive cell counts at day 7 p.i. ($p < 0.001$ vs naive; Fig. 2c; Additional file 4: Figure S4), indicative for proliferative/regenerative measures counteracting potential cell damage. Notably, Ki67 positive cell numbers were higher in infected *Nod2*^{-/-} as compared to WT mice ($p < 0.001$; Fig. 2c; Additional file 4: Figure S4). Hence, comparable clinical sequelae of *C. jejuni* infection of *Nod2*^{-/-} and WT mice were paralleled by similar microscopic inflammatory changes within the infected large intestines, whereas *C. jejuni* infected *Nod2*^{-/-} mice exhibited more distinct regenerative properties in the colon than WT controls.

Colonic immune cell responses in *C. jejuni* infected secondary abiotic *Nod2*^{-/-} mice

Given that recruitment of immune cells to the site of infection is a hallmark of intestinal inflammation in murine *C. jejuni* infection models [8], we next quantitatively assessed distinct immune cell populations in colonic paraffin sections applying in situ immunohistochemistry. Until day 7 p.i., colonic T lymphocytes increased more than threefold in WT control animals, but less distinctly in *Nod2*^{-/-} mice ($p < 0.001$; Fig. 3a; Additional file 5: Figure S5). Whereas mice of either genotype displayed elevated Treg numbers in their large intestines at day 7 p.i. ($p < 0.001$ vs naive; Fig. 3b; Additional file 6: Figure S6), B lymphocytes increased in *C. jejuni* infected WT mice only ($p < 0.001$; Fig. 3c; Additional file 7: Figure S7). Interestingly, naive secondary



abiotic *Nod2*^{-/-} mice exhibited higher B cell counts as compared to WT counterparts ($p < 0.05$; Fig. 3c; Additional file 7: Figure S7) that did not further increase upon *C. jejuni* infection of the former (n.s.; Fig. 3c). Hence, *Nod2*^{-/-} mice displayed less pronounced *C. jejuni* induced increases in T lymphocytes.

Colonic cytokine secretion in *C. jejuni* infected secondary abiotic mice lacking *Nod2*

We next surveyed *C. jejuni* induced pro-inflammatory cytokine secretion in colonic ex vivo biopsies. At day 7 p.i., pro-inflammatory mediators such as nitric oxide, TNE, IFN- γ , MCP-1 and IL-6 were elevated in large

intestines of both *Nod2*^{-/-} and WT mice ($p < 0.05-0.001$; Fig. 4a–e). *C. jejuni* induced increases in nitric oxide, TNF and IFN- γ were, however, more pronounced in *Nod2*^{-/-} mice as compared to WT counterparts ($p < 0.05-0.005$; Fig. 4a–c). Notably, *C. jejuni* infection resulted not only in enhanced pro-inflammatory, but also increased anti-inflammatory cytokine responses as indicated by elevated IL-10 levels in colonic ex vivo biopsies derived from both *Nod2*^{-/-} and WT mice at day 7 p.i. ($p < 0.05$ and $p < 0.01$, respectively; Fig. 4f). Hence, *C. jejuni* induced increases in large intestinal pro-inflammatory cytokines were higher in *Nod2*^{-/-} as compared to WT mice.

Colonic cytokines of the IL-23/IL-22/IL-18 axis in *C. jejuni* infected secondary abiotic *Nod2*^{-/-} mice

Recently our group showed that cytokines belonging to the IL-23/IL-22/IL-18 axis are involved in mediating murine

C. jejuni infection [25, 30–32]. We therefore determined expression levels of respective cytokines upon *C. jejuni* infection of secondary abiotic *Nod2*^{-/-} mice. Whereas colonic IL-23p19 mRNA levels were comparable in naive and *C. jejuni* infected mice of either genotype (n.s.; Fig. 5a), IL-22 was up-regulated in the large intestines of both *Nod2*^{-/-} and WT mice at day 7 p.i. ($p < 0.001$; Fig. 5b). Moreover, *C. jejuni* infection resulted in down-regulation of colonic IL-18 mRNA in *Nod2*^{-/-} mice only ($p < 0.01$; Fig. 5c). Whereas colonic IL-23p19 and IL-18 mRNA levels were lower in *C. jejuni* infected *Nod2*^{-/-} mice as compared to WT counterparts ($p < 0.005$ and $p < 0.05$, respectively; Fig. 5a, c), IL-22 expression was higher in the large intestines of *Nod2*^{-/-} versus WT mice at day 7 p.i. ($p < 0.005$; Fig. 5b). Hence, cytokines of the IL-23/IL-22/IL-18 axis are differentially expressed upon *C. jejuni* infection of secondary abiotic *Nod2*^{-/-} mice.

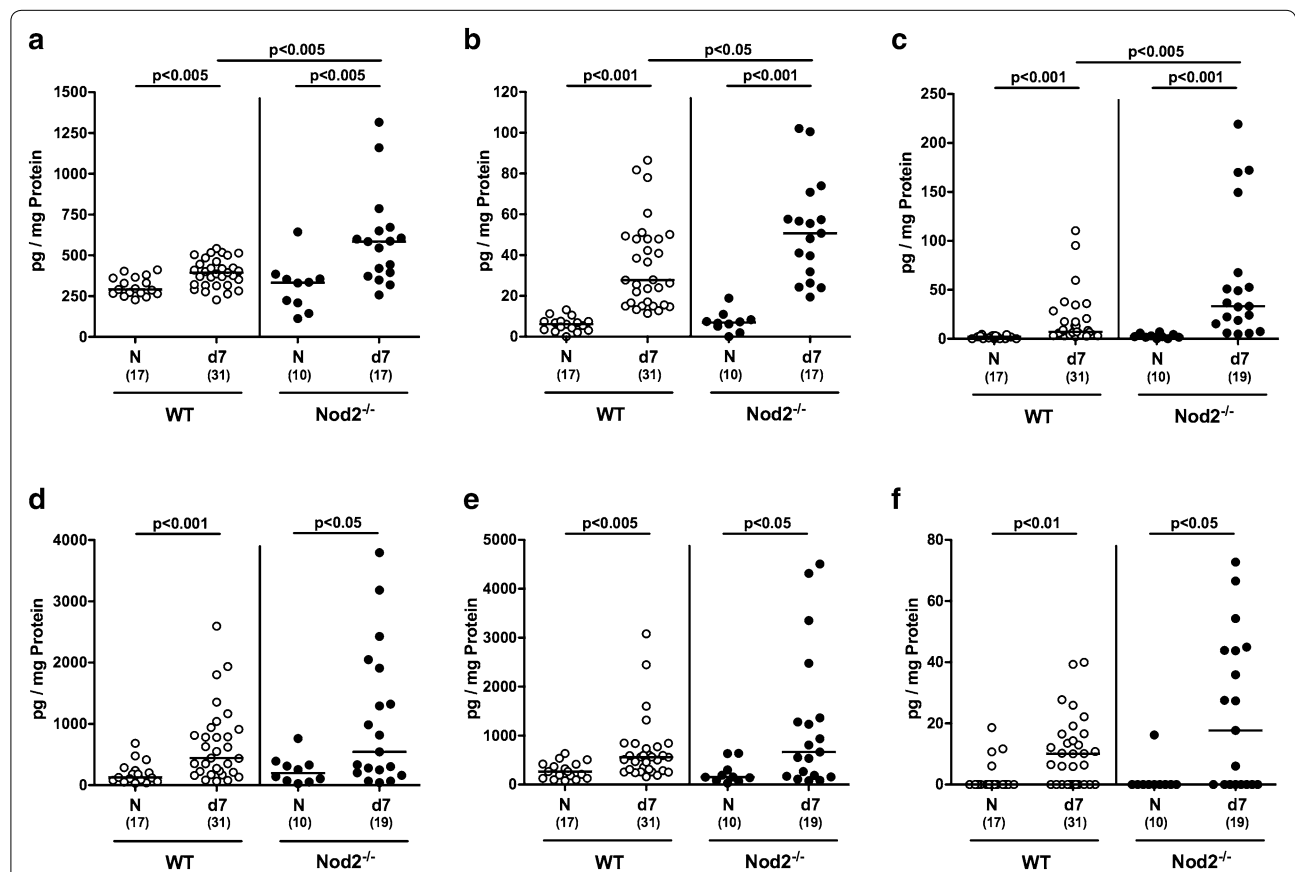
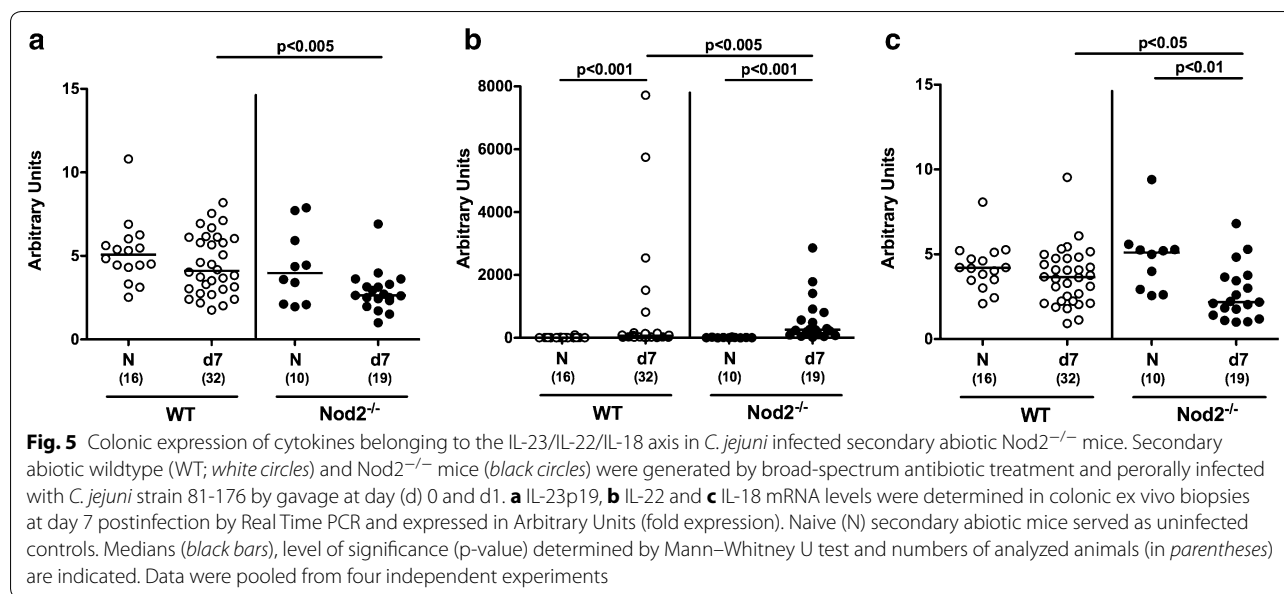


Fig. 4 Colonic secretion of pro- and anti-inflammatory cytokines in *C. jejuni* infected secondary abiotic *Nod2*^{-/-} mice. Secondary abiotic wildtype (WT; white circles) and *Nod2*^{-/-} mice (black circles) were generated by broad-spectrum antibiotic treatment and perorally infected with *C. jejuni* strain 81-176 by gavage at day (d) 0 and d1. **a** Nitric oxide, **b** TNF, **c** IFN- γ , **d** MCP-1, **e** IL-6 and **f** IL-10 concentrations were determined in supernatants of colonic ex vivo biopsies at day 7 postinfection. Naive (N) secondary abiotic mice served as uninfected controls. Medians (black bars), level of significance (p-value) determined by Mann–Whitney U test and numbers of analyzed animals (in parentheses) are indicated. Data were pooled from four independent experiments



Ileal cytokine secretion in *C. jejuni* infected secondary abiotic *Nod2*^{-/-} mice

We next addressed whether *C. jejuni* induced cytokine secretion could also be observed in the small intestinal tract. In fact, ileal TNF concentrations were higher in mice of either genotype at day 7 p.i. as compared to respective naive counterparts ($p < 0.05$; Fig. 6b), whereas TNF and nitric oxide levels were lower in both naive and *C. jejuni* infected *Nod2*^{-/-} as compared to WT controls ($p < 0.01$ – 0.005 ; Fig. 6a, b). Furthermore, IFN- γ and IL-10 concentrations increased until 7 p.i. of WT, but not *Nod2*^{-/-} mice and were lower in the latter ($p < 0.05$ and $p < 0.001$, respectively; Fig. 6c, f). In addition, IL-6 levels were lower in the ilea of *Nod2*^{-/-} as compared to WT mice at day 7 p.i. ($p < 0.05$; Fig. 6e). Hence, converse to the colon, ileal secretion of distinct cytokines was less pronounced in *C. jejuni* infected *Nod2*^{-/-} mice versus WT controls.

Pathogenic translocation in *C. jejuni* infected secondary abiotic *Nod2*^{-/-} mice

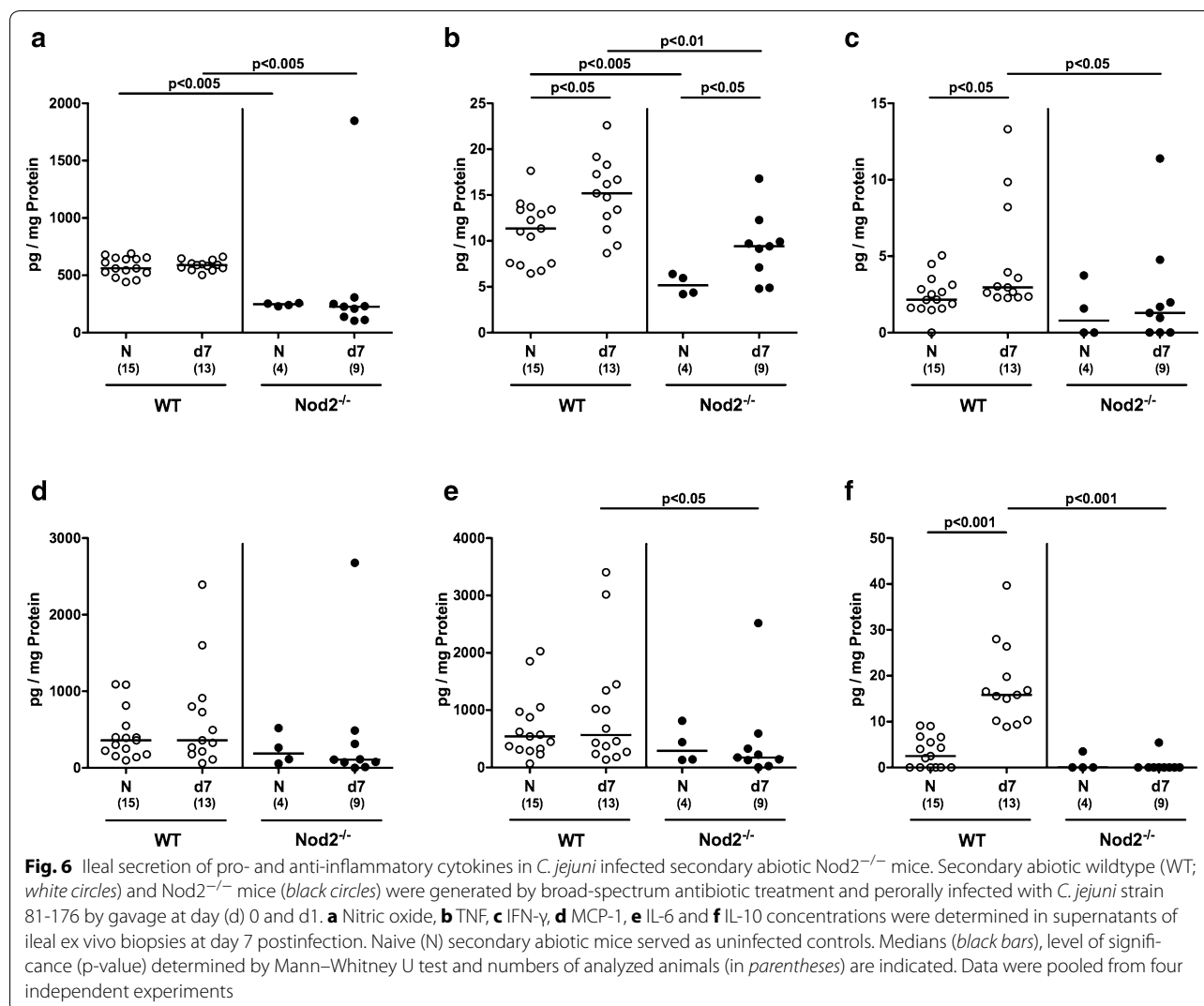
We next addressed whether viable *C. jejuni* could also be isolated from extra-intestinal compartments. Whereas *C. jejuni* was detectable in MLN of all *Nod2*^{-/-} and WT mice at day 7 p.i., the pathogen translocated to spleen and kidney of WT mice in 13.0 and 17.4% of cases, respectively, but could not be cultured from respective organs of *Nod2*^{-/-} mice by direct plating (Fig. 7). Notably, irrespective of the genotype of mice, livers were free of viable *C. jejuni* (Fig. 7).

Given that mucins constitute a pivotal part of the mucus layer warranting epithelial barrier integrity and

hence preventing from bacterial translocation [33, 34], we next measured mucin-2 (MUC2) expression levels in colonic ex vivo biopsies derived from *C. jejuni* infected secondary abiotic *Nod2*^{-/-} mice. MUC2 expression was down-regulated in the colon upon *C. jejuni* infection of *Nod2*^{-/-}, but not WT mice ($p < 0.05$; Fig. 8), and colonic MUC2 mRNA levels were lower in the former versus the latter at day 7 p.i. ($p < 0.005$; Fig. 8). Hence, even though MUC2 was down-regulated in *C. jejuni* infected *Nod2*^{-/-} mice, this did not result in increased pathogenic translocation from the intestinal tract to extra-intestinal compartments.

Cytokine responses in mesenteric lymph nodes and spleens upon *C. jejuni* infection of secondary abiotic *Nod2*^{-/-} mice

We next measured cytokine secretion in intestinal draining and systemic lymphatic tissues (i.e. MLN and spleen, respectively) following *C. jejuni* infection of secondary abiotic mice lacking Nod2. Whereas IFN- γ levels were elevated in MLN of both *Nod2*^{-/-} and WT mice at day 7 p.i. ($p < 0.001$; Fig. 9b), *C. jejuni* induced increases in TNF and IL-6 secretion could be observed in MLN of *Nod2*^{-/-} mice only ($p < 0.05$; Fig. 9a, e). At day 7 p.i., TNF, MCP-1 and IL-6 levels were higher in MLN of *Nod2*^{-/-} as compared to WT mice ($p < 0.05$; Fig. 9a, c, e). Notably, IL-10 secretion was virtually unaffected by *C. jejuni* infection (n.s.; Fig. 9f). Hence, distinct pro-inflammatory cytokines were higher in the intestines draining MLN of *C. jejuni* infected *Nod2*^{-/-} as compared to WT mice. In the systemic lymphatic compartment, however, virtually no *C. jejuni* induced increases in splenic cytokine secretion

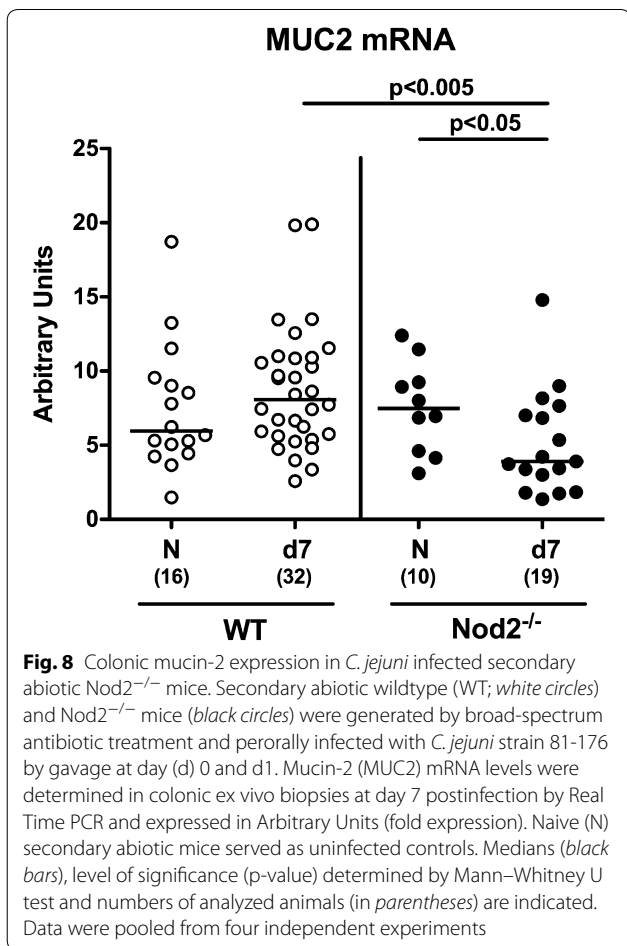
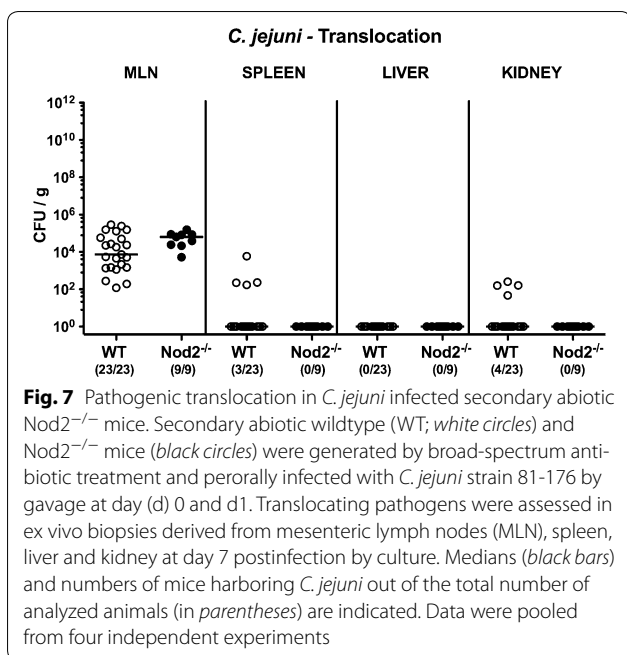


could be detected (Additional file 8: Figure S8). Notably, basal IL-6 levels were higher in spleens of secondary abiotic *Nod2*^{-/-} mice than WT controls ($p < 0.05$; Additional file 8: Figure S8E).

Discussion

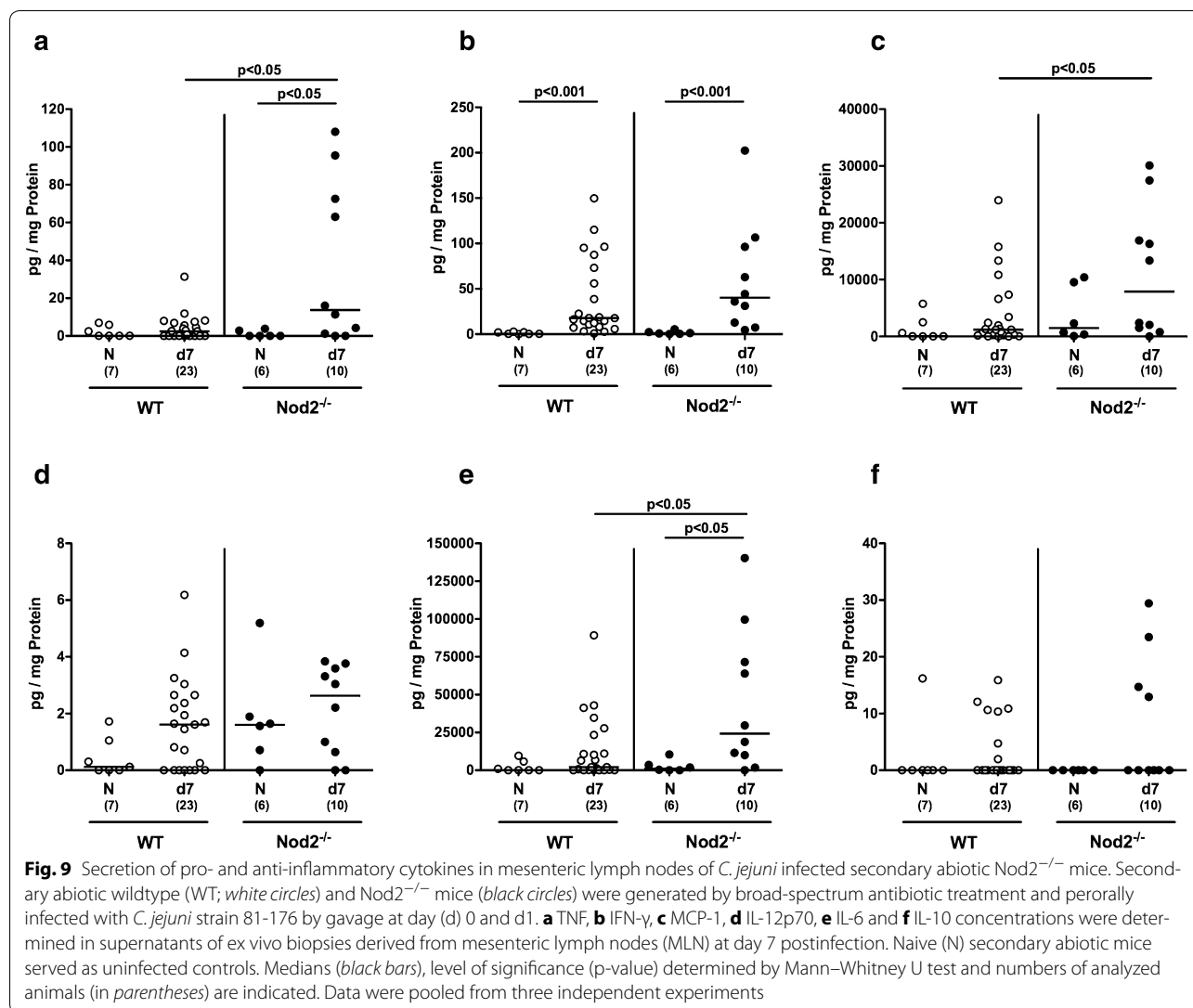
In order to prevent the host from invading pathogens including *C. jejuni* and to successfully combat infection, a concerted action of pattern recognition receptors, distinct innate and adaptive immune cells, and evolving signaling pathways are crucial [8–10]. In the present study we shed further light onto the role of the bacterial MDP sensor *Nod2* in *C. jejuni* infection of secondary abiotic mice. Notably, *Nod2* deficiency did not impact gastrointestinal colonization properties of *C. jejuni*, given that both secondary abiotic *Nod2*^{-/-} and WT mice harbored the pathogen with similar counts of

up to 10^9 CFU per g colonic luminal content. This might appear somewhat surprising, given that *Nod2* deficiency has been shown to be associated with altered expression of antimicrobial peptides such as defensins leading to an insufficient clearance of the pathogen [20, 35]. Despite the high pathogenic burden within the intestines, mice were macroscopically uncompromised and did not display overt clinical signs of campylobacteriosis such as wasting or bloody diarrhea. This is well in line with our previous infection studies in secondary abiotic mice that were deficient in matrix metalloproteinase (MMP) -2 or -9 [24, 36], in cytokines belonging to the IL-23/IL-22/IL-18 axis [32] or in innate immune receptors including Toll-like receptor (TLR) -4 or -9 and respective WT counterparts [8, 32]. Nevertheless, in our present and previous studies [8, 24, 32, 36], distinct *C. jejuni* induced microscopic changes within the intestinal tract such as



accelerated colonic epithelial apoptosis and pronounced influx of immune cells to the site of infection could be observed. Whereas Nod2 deficiency had no impact on *C. jejuni* induced colonic histopathological changes and apoptosis development, infected Nod2^{-/-} mice exhibited more distinct regenerative properties counteracting potential cell damage than WT controls. Furthermore, adaptive immune cell populations such as T and B lymphocytes were less distinctly abundant in the large intestines of *C. jejuni* infected Nod2^{-/-} as compared to WT mice, which is in line with our very recent investigations in conventionally colonized Nod2^{-/-} [37] and Nod2^{-/-} mice lacking IL-10 [38]. Our present colonic immune cell data are contrasted by the observed large intestinal secretion of pro-inflammatory mediators, given that *C. jejuni* induced increases in nitric oxide, TNF and IFN-γ protein concentrations were even more pronounced in Nod2^{-/-} mice which also held true for increased colonic TNF expression in *C. jejuni* infected conventionally colonized Nod2^{-/-} versus to WT mice as shown previously [37]. Overall, standard deviations in pro-inflammatory cytokine concentrations were relative high in *C. jejuni* infected mice of either genotype. It is therefore tempting to speculate that the extent of against *C. jejuni* directed immune responses might differ individually in both Nod2^{-/-} and WT mice.

We have recently highlighted the importance of the IL-23/IL-22/IL-18 axis in murine *C. jejuni* infection [25, 30–32]. In the present study we could demonstrate that respective cytokines were differentially expressed upon *C. jejuni* infection of secondary abiotic Nod2^{-/-} mice. As for large intestinal pro-inflammatory cytokines, *C. jejuni* induced up-regulation of colonic IL-22 mRNA was more pronounced in Nod2^{-/-} as compared to WT mice, whereas conversely, IL-18 was down-regulated in the former, and both IL-23p19 and IL-18 mRNA were lower in infected Nod2^{-/-} versus WT mice. IL-22 is a member of the IL-10 cytokine family and exerts dichotomous function which depends on the respective compartment and the surrounding cytokine milieu [31, 39, 40]. Whereas IL-22 exerts anti-inflammatory properties in the large intestinal tract [40], it has pro-inflammatory functions in the small intestines [29, 41, 42]. Given that IL-22 has been proven effective in antimicrobial host defence against *C. jejuni* [31, 32], more pronounced increases in IL-22 mRNA levels observed in *C. jejuni* infected Nod2^{-/-} mice might therefore point towards more distinct anti-pathogenic and anti-inflammatory counter-regulatory measures within the well-orchestrated host immune responses upon *C. jejuni* infection. Opposed to IL-22, IL-23p19, the master regulator of IL-22 expression [43], as well as IL-18 that is known to amplify IL-22 production during intestinal inflammation [41] were lower



in *C. jejuni* infected *Nod2*^{-/-} as compared to WT mice. This might be due to a potential negative feed-back loop regulation between respective cytokines.

Even though the large intestinal tract constitutes the major predilection site of *C. jejuni* infection [8, 23, 44, 45], we here additionally assessed pro-inflammatory cytokine secretion in the small intestine. Remarkably, as opposed to the colon, ileal nitric oxide, TNF, IFN- γ and IL-6 concentrations were lower in *C. jejuni* infected *Nod2*^{-/-} as compared to WT mice. It is hence tempting to speculate that *Nod2* might have dichotomous functions depending on the respective intestinal tissue, its immunological prerequisites, surrounding cytokines and other intestinal luminal factors.

To date, data are rather conflicting regarding the role of *Nod2* in intestinal inflammation including *C. jejuni* infection. Depending on the applied in vivo model *Nod2* might either prevent from or even enhance colitis

development in *C. jejuni* infected mice. For instance, in *IL-10*^{-/-} mice that had been pre-treated with antibiotics for 1 week, *Nod2* was shown to be essential for controlling campylobacteriosis, given that *Nod2*^{-/-} *IL-10*^{-/-} mice exhibited an exacerbation of *C. jejuni* induced large intestinal inflammation [46]. In another study by Jamontt and colleagues [47], however, *Nod2* was shown to promote *IL-10*^{-/-} colitis, given that *Nod2*^{-/-} *IL-10*^{-/-} mice were protected from colitis development.

Also in non-infection induced intestinal inflammation models data regarding the impact of *Nod* in disease development are inconclusive so far. Following adaptive transfer of *Nod2*^{-/-} T lymphocytes, immunodeficient mice developed less severe chronic colitis, for instance, pointing towards a rather disease-promoting feature of *Nod2* signaling [12]. Conversely, MDP application could sufficiently prevent from 2,4,6-trinitro-benzene-sulfonic acid (TNBS) induced colitis, whereas MDP-mediated

prevention of diseases was overruled in *Nod2*^{-/-} mice indicative for a protective role of *Nod2* signaling [48]. In an own study we further demonstrated that *Nod2* is involved in protection of mice from *Toxoplasma gondii* induced acute ileitis [49].

Epithelial barrier integrity is pivotal for preventing pathogenic translocation from the intestinal tract to extra-intestinal including systemic tissue sites with potentially fatal consequences [50]. Even though the mucin MUC2 was down-regulated in *C. jejuni* infected *Nod2*^{-/-} mice, this did not result in increased pathogenic translocation rates to liver, kidney or spleen, whereas viable *C. jejuni* could be isolated in comparable numbers from MLN of all infected *Nod2*^{-/-} and WT mice. Interestingly, secretion of pro-inflammatory cytokine including TNF, MCP-1 and IL-6 were higher in MLN of *C. jejuni* infected *Nod2*^{-/-} as compared to WT mice. In the systemic lymphatic compartment, however, virtually no *C. jejuni* induced increases in cytokine secretion could be detected.

In conclusion, upon *C. jejuni* infection of secondary abiotic mice *Nod2* signaling is involved in the initiation of a well-orchestrated innate and adaptive immune response but does not limit pathogen colonization. Future studies need to dissect the exact regulatory interactions to improve our understanding of the molecular mechanisms underlying campylobacteriosis.

Additional files

Additional file 1: Figure S1. Fecal blood in *C. jejuni* infected secondary abiotic *Nod2*^{-/-} mice. Secondary abiotic wildtype (WT; white circles) and *Nod2*^{-/-} mice (black circles) were generated by broad-spectrum antibiotic treatment and perorally infected with *C. jejuni* strain 81-176 by gavage at day (d) 0 and d1. Microscopic or macroscopic occurrence of blood in fecal samples before and after infection was assessed applying a standardized haemocult scoring system (see methods). Absolute numbers of animals with blood-positive fecal samples out of the total number of analyzed mice are indicated (in parentheses). Data were pooled from four independent experiments.

Additional file 2: Figure S2. Colonic histopathological changes in *C. jejuni* infected secondary abiotic *Nod2*^{-/-} mice. Secondary abiotic wildtype (WT, upper panel) and *Nod2*^{-/-} mice (lower panel) were generated by broad-spectrum antibiotic treatment and perorally infected with *C. jejuni* strain 81-176 by gavage at day (d) 0 and d1. Photomicrographs representative for four independent experiments (x100 magnification, scale bar 100 μm) depict histopathological mucosal changes in H&E stained large intestinal paraffin sections at day 7 following *C. jejuni* infection (d7, right panel). Naive secondary abiotic mice (left panel) served as uninfected controls.

Additional file 3: Figure S3. Colonic epithelial apoptosis in *C. jejuni* infected secondary abiotic *Nod2*^{-/-} mice. Secondary abiotic wildtype (WT, upper panel) and *Nod2*^{-/-} mice (lower panel) were generated by broad-spectrum antibiotic treatment and perorally infected with *C. jejuni* strain 81-176 by gavage at day (d) 0 and d1. Photomicrographs representative for four independent experiments (x400 magnification, scale bar 20 μm) depict apoptotic (caspase3 positive) cells (arrows) in large intestinal epithelia at day 7 following *C. jejuni* infection (d7, right panel) applying *in situ* immunohistochemistry of colonic paraffin sections. Naive secondary abiotic mice (left panel) served as uninfected controls.

Additional file 4: Figure S4. Proliferating colonic epithelial cells in *C. jejuni* infected secondary abiotic *Nod2*^{-/-} mice. Secondary abiotic wildtype (WT, upper panel) and *Nod2*^{-/-} mice (lower panel) were generated by broad-spectrum antibiotic treatment and perorally infected with *C. jejuni* strain 81-176 by gavage at day (d) 0 and d1. Photomicrographs representative for four independent experiments (x100 magnification, scale bar 100 μm) depict apoptotic (Ki67 positive) cells in large intestinal epithelia at day 7 following *C. jejuni* infection (d7, right panel) applying *in situ* immunohistochemistry of colonic paraffin sections. Naive secondary abiotic mice (left panel) served as uninfected controls.

Additional file 5: Figure S5. Colonic T lymphocytes in *C. jejuni* infected secondary abiotic *Nod2*^{-/-} mice. Secondary abiotic wildtype (WT, upper panel) and *Nod2*^{-/-} mice (lower panel) were generated by broad-spectrum antibiotic treatment and perorally infected with *C. jejuni* strain 81-176 by gavage at day (d) 0 and d1. Photomicrographs representative for four independent experiments (x400 magnification, scale bar 20 μm) depict colonic CD3 positive T lymphocytes at day 7 following *C. jejuni* infection (d7, right panel) applying *in situ* immunohistochemistry of colonic paraffin sections. Naive secondary abiotic mice (left panel) served as uninfected controls.

Additional file 6: Figure S6. Colonic regulatory T cells in *C. jejuni* infected secondary abiotic *Nod2*^{-/-} mice. Secondary abiotic wildtype (WT, upper panel) and *Nod2*^{-/-} mice (lower panel) were generated by broad-spectrum antibiotic treatment and perorally infected with *C. jejuni* strain 81-176 by gavage at day (d) 0 and d1. Photomicrographs representative for four independent experiments (x400 magnification, scale bar 20 μm) depict colonic FOXP3 positive regulatory T cells at day 7 following *C. jejuni* infection (d7, right panel) applying *in situ* immunohistochemistry of colonic paraffin sections. Naive secondary abiotic mice (left panel) served as uninfected controls.

Additional file 7: Figure S7. Colonic B lymphocytes in *C. jejuni* infected secondary abiotic *Nod2*^{-/-} mice. Secondary abiotic wildtype (WT, upper panel) and *Nod2*^{-/-} mice (lower panel) were generated by broad-spectrum antibiotic treatment and perorally infected with *C. jejuni* strain 81-176 by gavage at day (d) 0 and d1. Photomicrographs representative for four independent experiments (x400 magnification, scale bar 20 μm) depict colonic B220 positive B lymphocytes at day 7 following *C. jejuni* infection (d7, right panel) applying *in situ* immunohistochemistry of colonic paraffin sections. Naive secondary abiotic mice (left panel) served as uninfected controls.

Additional file 8: Figure S8. Secretion of pro- and anti-inflammatory cytokines in spleens of *C. jejuni* infected secondary abiotic *Nod2*^{-/-} mice. Secondary abiotic wildtype (WT; white circles) and *Nod2*^{-/-} mice (black circles) were generated by broad-spectrum antibiotic treatment and perorally infected with *C. jejuni* strain 81-176 by gavage at day (d) 0 and d1. **(A)** Nitric oxide, **(B)** TNF, **(C)** IFN-γ, **(D)** MCP-1, **(E)** IL-6 and **(F)** IL-10 concentrations were determined in supernatants of *ex vivo* biopsies derived from spleens at day 7 postinfection. Naive (N) secondary abiotic mice served as uninfected controls. Medians (black bars), level of significance (p-value) determined by Mann-Whitney U test and numbers of analyzed animals (in parentheses) are indicated. Data were pooled from four independent experiments.

Abbreviations

CFU: colony forming units; HPF: high power field; HPRT: hypoxanthine-phosphoribosyltransferase; MDP: muramyl dipeptide; MLN: mesenteric lymph nodes; MMP: matrix metalloproteinase; MUC2: mucin-2; NOD: nucleotide-binding oligomerization domain; PCR: polymerase chain reaction; PBS: phosphate buffered saline; p.i.: postinfection; SPF: special pathogen-free; TLR: Toll-like receptor; TNBS: trinitrobenzene sulfonic acid; Treg: regulatory T cells; WT: wildtype.

Authors' contributions

Conceived and designed the experiments: SB, MMH. Performed the experiments: UG, MEA, AF, MMH. Analyzed the data: SB, UG, MEA, AF, AAK, MMH. Contributed reagents/materials/analysis tools: AAK. Wrote the paper: SB, MMH. All authors read and approved the final manuscript.

Author details

¹ Department of Microbiology and Hygiene, Charité-University Medicine Berlin, CCS, Campus Benjamin Franklin, FEM, Garystr. 5, 14195 Berlin, Germany.
² Research Center ImmunoSciences (RCIS), Charité-University Medicine Berlin, Berlin, Germany.

Acknowledgements

We thank Michaela Wattrout, Ursula Rüschemdorf, Silvia Schulze, Alexandra Bittroff-Leben, Ines Puschendorf, Gernot Reifenberger, Ulrike Fiebiger, Uwe Lohmann, and the staff of the animal research facility at Charité-University Medicine Berlin for.

Competing interests

The authors declare that they have no competing interests.

Availability of data and materials

Please contact author for data requests.

Ethics approval

All animal experiments were conducted according to the European Guidelines for animal welfare (2010/63/EU) with approval of the commission for animal experiments headed by the "Landesamt für Gesundheit und Soziales" (LaGeSo, Berlin, registration number G0135/10). Animal welfare was monitored twice daily by assessment of clinical conditions.

Funding

This work was supported by grants from the German Research Foundation (DFG) to AF and SB (SFB 633, TP A7), MMH (SFB 633, TP B6), AAK (SFB 633, TP Z1), MEA and UG (SFB 633, Immuco), and from the German Federal Ministry of Education and Research (BMBF) to SB (TP1.1, "Lab in a hanky" project).

The funders had no role in study design, data collection and analysis, decision to publish or preparation of the manuscript.

Publisher's Note

Springer Nature remains neutral with regard to jurisdictional claims in published maps and institutional affiliations.

Received: 13 March 2017 Accepted: 30 May 2017

Published online: 06 June 2017

References

- Kist M, Bereswill S. *Campylobacter jejuni*. *Contrib Microbiol*. 2001;8:150–65.
- Young KT, Davis LM, Dirita VJ. *Campylobacter jejuni*: molecular biology and pathogenesis. *Nat Rev Microbiol*. 2007;5(9):665–79.
- Backert S, Tegtmeyer N, Cróininí TÓ, Boehm M, Heimesaat MM. Chapter 1-human campylobacteriosis. In: Klein G, editor. *Campylobacter-features, detection, and prevention of foodborne disease*. London: Elsevier, Academic Press; 2017. p. 1–25.
- Lane JA, Mehra RK, Carrington SD, Hickey RM. The food glycome: a source of protection against pathogen colonization in the gastrointestinal tract. *Int J Food Microbiol*. 2010;142(1–2):1–13.
- Guerry P, Szymanski CM. *Campylobacter* sugars sticking out. *Trends Microbiol*. 2008;16(9):428–35.
- Alter T, Bereswill S, Glunder G, Haag LM, Hanel I, Heimesaat MM, et al. *Campylobacteriosis of man: livestock as reservoir for Campylobacter species*. *Bundesgesundheitsblatt, Gesundheitsforschung, Gesundheitsschutz*. 2011;54(6):728–34.
- Wakerley BR, Uncini A, Yuki N, Group GBSC. Guillain-Barre and Miller Fisher syndromes—new diagnostic classification. *Nat Rev Neurol*. 2014;10(9):537–44.
- Bereswill S, Fischer A, Plickert R, Haag LM, Otto B, Kuhl AA, et al. Novel murine infection models provide deep insights into the "ménage à trois" of *Campylobacter jejuni*, microbiota and host innate immunity. *PLoS ONE*. 2011;6(6):e20953.
- Masanta WO, Heimesaat MM, Bereswill S, Tareen AM, Lugert R, Gross U, et al. Modification of intestinal microbiota and its consequences for innate immune response in the pathogenesis of campylobacteriosis. *Clin Dev Immunol*. 2013;2013:526860.
- Heimesaat MM, Bereswill S. Murine infection models for the investigation of *Campylobacter jejuni*–host interactions and pathogenicity. *Berl Munch Tierarztl Wochenschr*. 2015;128(3–4):98–103.
- Fiebiger U, Bereswill S, Heimesaat MM. Dissecting the interplay between intestinal microbiota and host immunity in health and disease: lessons learned from germfree and gnotobiotic animal models. *Eur J Microbiol Immunol (Bp)*. 2016;6(4):253–71.
- Shaw MH, Reimer T, Kim YG, Nunez G. NOD-like receptors (NLRs): bona fide intracellular microbial sensors. *Curr Opin Immunol*. 2008;20(4):377–82.
- Ogura Y, Inohara N, Benito A, Chen FF, Yamaoka S, Nunez G. Nod2, a Nod1/Apaf-1 family member that is restricted to monocytes and activates NF- κ B. *J Biol Chem*. 2001;276(7):4812–8.
- Ogura Y, Lala S, Xin W, Smith E, Dowds TA, Chen FF, et al. Expression of NOD2 in Paneth cells: a possible link to Crohn's ileitis. *Gut*. 2003;52(11):1591–7.
- Tada H, Aiba S, Shibata K, Ohteki T, Takada H. Synergistic effect of Nod1 and Nod2 agonists with toll-like receptor agonists on human dendritic cells to generate interleukin-12 and T helper type 1 cells. *Infect Immun*. 2005;73(12):7967–76.
- Girardin SE, Travassos LH, Herve M, Blanot D, Boneca IG, Philpott DJ, et al. Peptidoglycan molecular requirements allowing detection by Nod1 and Nod2. *J Biol Chem*. 2003;278(43):41702–8.
- Girardin SE, Boneca IG, Viala J, Chamaillard M, Labigne A, Thomas G, et al. Nod2 is a general sensor of peptidoglycan through muramyl dipeptide (MDP) detection. *J Biol Chem*. 2003;278(11):8869–72.
- Grimes CL, Ariyananda Lde Z, Melnyk JE, O'Shea EK. The innate immune protein Nod2 binds directly to MDP, a bacterial cell wall fragment. *J Am Chem Soc*. 2012;134(33):13535–7.
- Moreira LO, Zamboni DS. NOD1 and NOD2 signaling in infection and inflammation. *Front Immunol*. 2012;3:328.
- Kobayashi KS, Chamaillard M, Ogura Y, Henegariu O, Inohara N, Nunez G, et al. Nod2-dependent regulation of innate and adaptive immunity in the intestinal tract. *Science*. 2005;307(5710):731–4.
- Meinzer U, Esmiol-Welterlin S, Barreau F, Berrebi D, Dussallant M, Bonacorsi S, et al. Nod2 mediates susceptibility to *Yersinia pseudotuberculosis* in mice. *PLoS ONE*. 2008;3(7):e2769.
- Heimesaat MM, Bereswill S, Fischer A, Fuchs D, Struck D, Niebergall J, et al. Gram-negative bacteria aggravate murine small intestinal Th1-type immunopathology following oral infection with *Toxoplasma gondii*. *J Immunol*. 2006;177(12):8785–95.
- Haag LM, Fischer A, Otto B, Plickert R, Kuhl AA, Gobel UB, et al. *Campylobacter jejuni* induces acute enterocolitis in gnotobiotic IL-10^{-/-} mice via Toll-like-receptor-2 and -4 signaling. *PLoS ONE*. 2012;7(7):e40761.
- Alutis ME, Grundmann U, Fischer A, Hagen U, Kuhl AA, Gobel UB, et al. The role of gelatinases in *Campylobacter jejuni* infection of gnotobiotic mice. *Eur J Microbiol Immunol (Bp)*. 2015;5(4):256–67.
- Alutis ME, Grundmann U, Hagen U, Fischer A, Kuhl AA, Gobel UB, et al. Matrix metalloproteinase-2 mediates intestinal immunopathogenesis in *Campylobacter jejuni*-infected infant mice. *Eur J Microbiol Immunol (Bp)*. 2015;5(3):188–98.
- Heimesaat MM, Alutis M, Grundmann U, Fischer A, Tegtmeyer N, Bohm M, et al. The role of serine protease HtrA in acute ulcerative enterocolitis and extra-intestinal immune responses during *Campylobacter jejuni* infection of gnotobiotic IL-10 deficient mice. *Front Cell Infect Microbiol*. 2014;4:77.
- Heimesaat MM, Nogai A, Bereswill S, Plickert R, Fischer A, Lodenkemper C, et al. MyD88/TLR9 mediated immunopathology and gut microbiota dynamics in a novel murine model of intestinal graft-versus-host disease. *Gut*. 2010;59(8):1079–87.
- Heimesaat MM, Lugert R, Fischer A, Alutis M, Kuhl AA, Zautner AE, et al. Impact of *Campylobacter jejuni* cJ0268c knockout mutation on intestinal colonization, translocation, and induction of immunopathology in gnotobiotic IL-10 deficient mice. *PLoS ONE*. 2014;9(2):e90148.
- Munoz M, Heimesaat MM, Danker K, Struck D, Lohmann U, Plickert R, et al. Interleukin (IL)-23 mediates *Toxoplasma gondii*-induced immunopathology in the gut via matrixmetalloproteinase-2 and IL-22 but independent of IL-17. *J Exp Med*. 2009;206(13):3047–59.
- Heimesaat MM, Grundmann U, Alutis ME, Fischer A, Gobel UB, Bereswill S. Colonic expression of genes encoding inflammatory mediators and

- gelatinases during *Campylobacter jejuni* infection of conventional infant mice. *Eur J Microbiol Immunol* (Bp). 2016;6(2):137–46.
31. Heimesaat MM, Grundmann U, Alutis ME, Fischer A, Gobel UB, Bereswill S. The IL-23/IL-22/IL-18 axis in murine *Campylobacter jejuni* infection. *Gut Pathog*. 2016;8:21.
 32. Bereswill S, Alutis ME, Grundmann U, Fischer A, Gobel UB, Heimesaat MM. Interleukin-18 mediates immune responses to *Campylobacter jejuni* infection in gnotobiotic mice. *PLoS ONE*. 2016;11(6):e0158020.
 33. Velcich A, Yang W, Heyer J, Fragale A, Nicholas C, Viani S, et al. Colorectal cancer in mice genetically deficient in the mucin Muc2. *Science*. 2002;295(5560):1726–9.
 34. McGuckin MA, Linden SK, Sutton P, Florin TH. Mucin dynamics and enteric pathogens. *Nat Rev Microbiol*. 2011;9(4):265–78.
 35. Huttner KM, Bevins CL. Antimicrobial peptides as mediators of epithelial host defense. *Pediatr Res*. 1999;45(6):785–94.
 36. Alutis ME, Grundmann U, Fischer A, Kuhl AA, Bereswill S, Heimesaat MM. Selective gelatinase inhibition reduces apoptosis and pro-inflammatory immune cell responses in *Campylobacter jejuni*-infected gnotobiotic IL-10 deficient mice. *Eur J Microbiol Immunol* (Bp). 2014;4(4):213–22.
 37. Bereswill S, Grundmann U, Alutis ME, Fischer A, Heimesaat MM. *Campylobacter jejuni* infection of conventionally colonized mice lacking nucleotide-oligomerization-domain-2. *Gut Pathog*. 2017;9:5.
 38. Heimesaat MM, Grundmann U, Alutis ME, Fischer A, Bereswill S. Microbiota composition and immune responses during *Campylobacter jejuni* infection in conventionally colonized IL-10^{-/-} mice lacking nucleotide oligomerization domain 2. *Eur J Microbiol Immunol* (Bp). 2017. doi:10.1556/1886.2016.000038.
 39. Ouyang WJ, Rutz S, Crellin NK, Valdez PA, Hymowitz SG. Regulation and functions of the IL-10 family of cytokines in inflammation and disease. *Annu Rev Immunol*. 2011;29:71–109.
 40. Eidschenk C, Rutz S, Liesenfeld O, Ouyang W. Role of IL-22 in microbial host defense. *Curr Top Microbiol Immunol*. 2014;380:213–36.
 41. Munoz M, Eidschenk C, Ota N, Wong K, Lohmann U, Kuhl AA, et al. Interleukin-22 induces interleukin-18 expression from epithelial cells during intestinal infection. *Immunity*. 2015;42(2):321–31.
 42. Munoz M, Liesenfeld O, Heimesaat MM. Immunology of *Toxoplasma gondii*. *Immunol Rev*. 2011;240(1):269–85.
 43. Buonocore S, Ahern PP, Uhlig HH, Ivanov II, Littman DR, Maloy KJ, et al. Innate lymphoid cells drive interleukin-23-dependent innate intestinal pathology. *Nature*. 2010;464(7293):1371–5.
 44. Haag LM, Fischer A, Otto B, Grundmann U, Kuhl AA, Gobel UB, et al. *Campylobacter jejuni* infection of infant mice: acute enterocolitis is followed by asymptomatic intestinal and extra-intestinal immune responses. *Eur J Microbiol Immunol* (Bp). 2012;2(1):2–11.
 45. Heimesaat MM, Haag LM, Fischer A, Otto B, Kuhl AA, Gobel UB, et al. Survey of extra-intestinal immune responses in asymptomatic long-term *Campylobacter jejuni*-infected mice. *Eur J Microbiol Immunol* (Bp). 2013;3(3):174–82.
 46. Sun X, Jobin C. Nucleotide-binding oligomerization domain-containing protein 2 controls host response to *Campylobacter jejuni* in IL10^{-/-} mice. *J Infect Dis*. 2014;210(7):1145–54.
 47. Jamontt J, Petit S, Clark N, Parkinson SJ, Smith P. Nucleotide-binding oligomerization domain 2 signaling promotes hyperresponsive macrophages and colitis in IL-10-deficient mice. *J Immunol*. 2013;190(6):2948–58.
 48. Watanabe T, Asano N, Murray PJ, Ozato K, Taylor P, Fuss IJ, et al. Muramyl dipeptide activation of nucleotide-binding oligomerization domain 2 protects mice from experimental colitis. *J Clin Invest*. 2008;118(2):545–59.
 49. Heimesaat MM, Dunay IR, Alutis M, Fischer A, Mohle L, Gobel UB, et al. Nucleotide-oligomerization-domain-2 affects commensal gut microbiota composition and intracerebral immunopathology in acute *Toxoplasma gondii* induced murine ileitis. *PLoS ONE*. 2014;9(8):e105120.
 50. Pelaseyed T, Bergstrom JH, Gustafsson JK, Ermund A, Birchenough GM, Schutte A, et al. The mucus and mucins of the goblet cells and enterocytes provide the first defense line of the gastrointestinal tract and interact with the immune system. *Immunol Rev*. 2014;260(1):8–20.

Submit your next manuscript to BioMed Central and we will help you at every step:

- We accept pre-submission inquiries
- Our selector tool helps you to find the most relevant journal
- We provide round the clock customer support
- Convenient online submission
- Thorough peer review
- Inclusion in PubMed and all major indexing services
- Maximum visibility for your research

Submit your manuscript at
www.biomedcentral.com/submit

