

## Inhibition of KLF4 by Statins Reverses Adriamycin-Induced Metastasis and Cancer Stemness in Osteosarcoma Cells

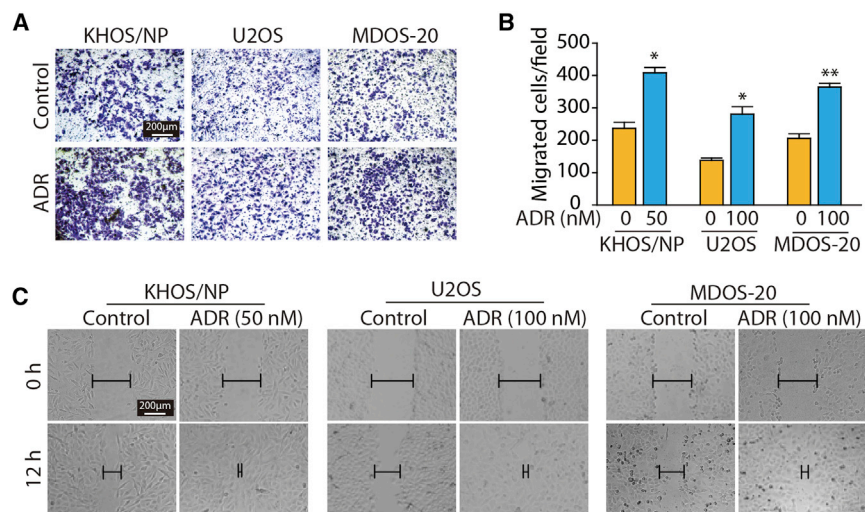
Yangling Li, Miao Xian, Bo Yang, Meidan Ying,\* and Qiaojun He\*

\*Correspondence: mying@zju.edu.cn (M.Y.), qiaojunhe@zju.edu.cn (Q.H.)

<https://doi.org/10.1016/j.stemcr.2020.03.025>

(Stem Cell Reports 8, 1617–1629; June 6, 2017)

In the original version of this article, there were unintended errors in Figure 2C and Figure 6G. Specifically, in Figure 2C, pictures of scratch assay of MDOS20 cells are the same for control group and ADR group treated for 0 h. In Figure 6G, images of transwell migration assay are the same for Simva group and Simva+ADR group. The correct pictures of scratch assay for ADR group in Figure 2C and transwell migration assay for Simva group in Figure 6G now appear below. The authors sincerely regret these unintentional duplications. These corrections do not alter the main conclusions drawn from this study.



**Figure 2. ADR Induces Metastasis of Osteosarcoma Cells (corrected)**

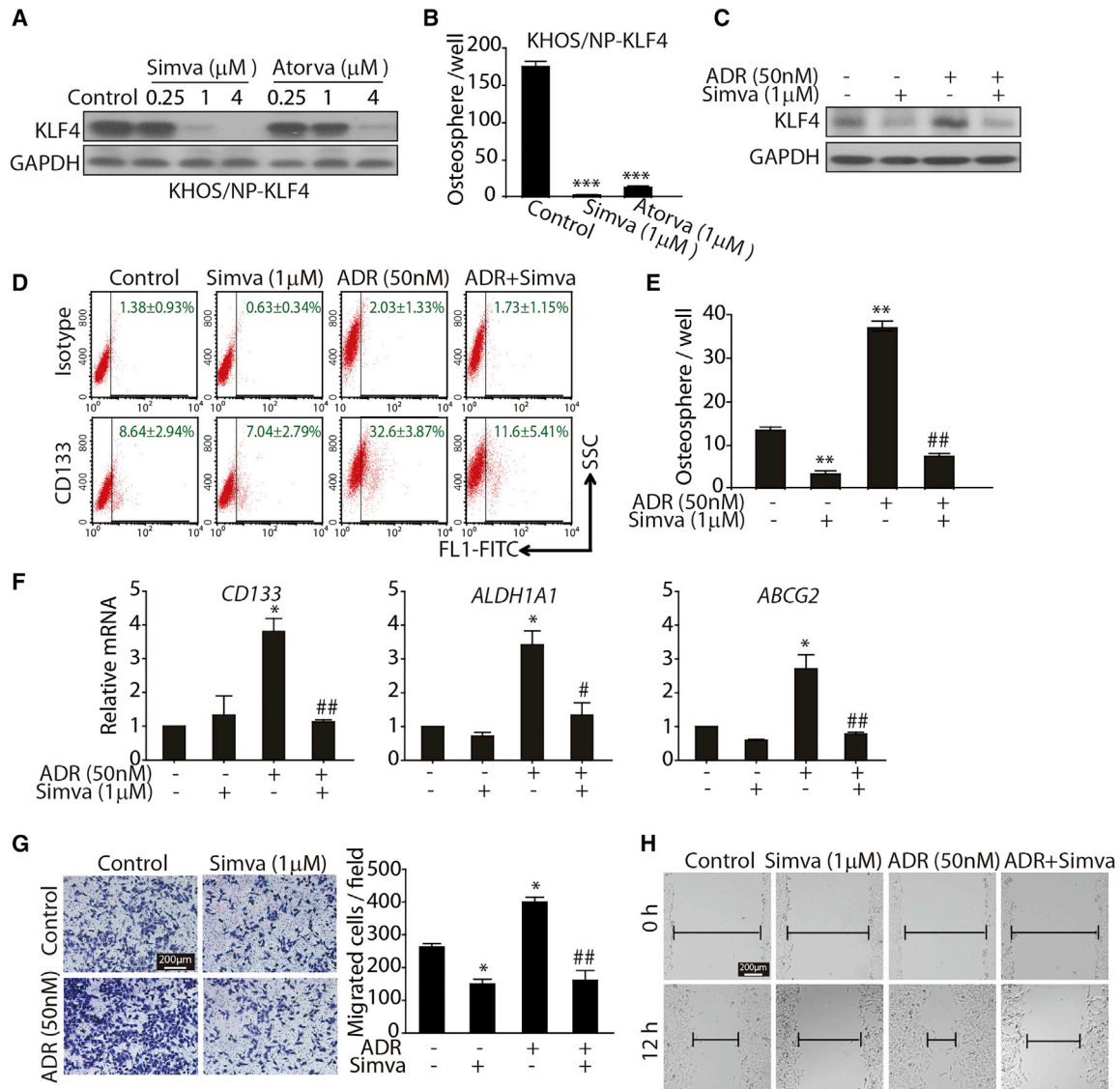


Figure 6. Statins Inhibit KLF4 Expression and Osteosarcoma Cancer Stemness Traits *In Vitro* (corrected)