

# Draft Genome Sequence of *Oceanobacillus jordanicus* Strain GSFE11, a Halotolerant Plant Growth-Promoting Bacterial Endophyte Isolated From the Jordan Valley

Evolutionary Bioinformatics  
Volume 18: 1–6  
© The Author(s) 2022  
Article reuse guidelines:  
sagepub.com/journals-permissions  
DOI: 10.1177/11769343211071114



Tareq Alhindi<sup>1</sup>  and Randa Albdaawi<sup>2</sup>

<sup>1</sup>Department of Biological Sciences, School of Science, The University of Jordan, Amman, Jordan. <sup>2</sup>Department of Land, Water and Environment, School of Agriculture, The University of Jordan, Amman, Jordan.

**ABSTRACT:** The bacterium *Oceanobacillus jordanicus* strain GSFE11 is a halotolerant endophyte isolated from sterilized roots of Durum wheat (*Triticum turgidum* ssp. *Durum*) growing in hot and arid environments of Ghor Safi area in the Jordan Valley. The draft genome sequence and annotation of this plant growth-promoting endophytic bacterium are reported in this study. The draft genome sequence of *Oceanobacillus jordanicus* strain GSFE11 has 3839208bp with a G + C content of 39.09%. A total of 3893 protein-coding genes and 68 RNA coding genes were predicted. Several putative genes that are involved in secretion and delivery systems, transport, adhesion, motility, membrane proteins, plant cell wall modification, and detoxification were identified, some are characteristics of endophytes lifestyle including genes that are involved in metabolism of carbohydrate, genes for xylose, fructose and chitin utilization, quinone cofactors biosynthesis, genes associated with nitrogen, sulfur, phosphate and iron acquisition, in addition to genes involved in the biosynthesis of plant hormone auxin. This study highlights the importance of using genome analysis and phylogenomic analysis to resolve the differences between closely related species, such analysis showed *Oceanobacillus jordanicus* strain GSFE11 to be a new species closely related to *Oceanobacillus picturae* (genome size 3.67 Mb), *Oceanobacillus jordanicus* has higher a number of predicted genes compared with *Oceanobacillus picturae* (3961 genes vs 3823 genes).

**KEYWORDS:** Bacterial endophyte, durum wheat, halotolerance, *Oceanobacillus jordanicus*, whole genome sequencing

**RECEIVED:** August 11, 2021. **ACCEPTED:** December 14, 2021.

**TYPE:** Original Research

**FUNDING:** The author(s) disclosed receipt of the following financial support for the research, authorship, and/or publication of this article: The Deanship of Scientific Research – The University of Jordan (Grant Number: 2350).

**DECLARATION OF CONFLICTING INTERESTS:** The author(s) declared no potential conflicts of interest with respect to the research, authorship, and/or publication of this article.

**CORRESPONDING AUTHOR:** Tareq Alhindi, Department of Biological Sciences, School of Science, The University of Jordan, Amman 11942, Jordan; Email: t.alhindi@ju.edu.jo

## Introduction

Jordan Valley stretches from the Sea of Galilee to the Dead Sea; this valley has the lowest elevation on Earth, with less than 440m below sea level. The Ghor area east of the Dead Sea has been cultivated for millennia, but in recent years the area has suffered from the scarcity of rainwater and an increment in soil salinity.<sup>1</sup> The abiotic stresses from drought, salinity, and extreme temperatures can limit plant growth and crop development.<sup>2</sup> Nowadays, the increase in soil salinity is a major worldwide concern, affecting areas like river deltas and many other semi-arid regions.<sup>3</sup> Salinity can have an effect on cellular metabolism, leading to several physiological, morphological, biochemical, and molecular changes in plants.<sup>4</sup> Salinity can impose osmotic stress which effect water availability and might contribute to the accumulation of toxic ions in the cells, oxidative stress damage, and nutrient imbalances.<sup>5</sup> These factors can impact plant growth and development.

Nonetheless, many plants seem to have adapted to living in such inhospitable environments.<sup>6</sup> Endophytic bacteria reside within plants, usually promoting plant growth by several mechanisms; they stimulate uptake of nutrients, usually by producing siderophores that can sequester iron, they participate in phosphorus solubilization and nitrogen fixation,<sup>7</sup> they can also produce certain bioactive secondary metabolites such as phytohormones,<sup>8</sup> and they might play a role in keeping the plant healthy by fighting other pathogens such as bacteria and fungi.<sup>9</sup>

In a recent study, several rhizobacteria associated with durum wheat (*Triticum turgidum* ssp. *durum*) that have plant growth-promoting properties were isolated from fields of high salinity in Ghor area near the Dead Sea.<sup>10</sup> The isolated rhizobacteria strains possessed several plant growth-promoting traits including siderophore production, inorganic phosphate solubilization, nitrogen fixation, auxin production, and antifungal activity against *Fusarium culmorum*. Among the isolated halotolerant bacterial endophytes, GSFE11 was identified as *Oceanobacillus* sp. by sequencing the *16S ribosomal RNA* (rRNA) gene. Interestingly, the endophytic strain GSFE11 has similar *16S rRNA* sequence to GSFR11 a rhizospheric strain isolated from the soil surrounding the same plant indicating the occurrence of the strain in environmental and plant samples.<sup>10</sup> The endophytic strain GSFE11 was initially described as a gram-positive and rod-shaped bacteria forming small white colonies that were able to grow on saline media (15% NaCl). The strain was characterized for several plant growth-promoting traits and was found to produce Indole acetic acid (IAA) and degrade aminocyclopropane-1-carboxylic acid (ACC) and improved substantially the growth of durum wheat plants under salinity and drought conditions. Furthermore, GSFE11 showed the strongest inhibitory effect against antifungal activity against *Fusarium. culmorum* restricting its growth in a dual culture plate assay when compared to other strains. *Oceanobacillus* bacteria belong to the phylum Firmicutes, within the family



Creative Commons Non Commercial CC BY-NC: This article is distributed under the terms of the Creative Commons Attribution-NonCommercial 4.0 License (<https://creativecommons.org/licenses/by-nc/4.0/>) which permits non-commercial use, reproduction and distribution of the work without further permission provided the original work is attributed as specified on the SAGE and Open Access pages (<https://us.sagepub.com/en-us/nam/open-access-at-sage>).

Bacillaceae. The genus includes several species that are motile Gram-positive rods, growing obligatory aerobically or facultative anaerobically. Some species are moderately halophilic bacteria as GSFE11 strain is. *Oceanobacillus* bacteria were isolated from various environmental samples, including salt fields,<sup>11</sup> deep-sea sediment cores,<sup>12</sup> several food samples as in the traditional Korean fermented food (kimchi),<sup>13</sup> fermented shrimp samples,<sup>14</sup> equipment used in the production of soy sauce.<sup>15</sup> *Oceanobacillus picturae* was isolated from salt field<sup>11</sup> and human stool sample.<sup>16</sup> *Oceanobacillus endoradicis*, an endophytic bacterial species, was isolated from the root of *Paris polyphylla*,<sup>17</sup> and in another study, *O. picturae* (CML15) and *O. picturae* (CrL11) were isolated from *Cakile maritima* leaves.<sup>18</sup> *Oceanobacillus* has been shown to promote plant growth in several plants.<sup>11,19,20</sup> As of this study, no whole genome of an endophytic *Oceanobacillus* is available yet.

Here, we report the first draft genome of an endophytic *Oceanobacillus* species. The draft genome of *O. jordanicus* strain GSFE11 has been assembled. Here, the details of the draft genome sequence are described.

## Materials and Methods

### Genomic DNA isolation, library preparation, and sequencing

From a single isolate colony, a 5 ml culture was grown in liquid NA media, this was used for total genomic DNA isolation using the Wizard® Genomic DNA Purification Kit (Promega Madison, WI, USA) following the manufacturer's instructions. The isolated gDNA quality was assessed by gel electrophoresis in a 1% agarose gel stained with Red Safe (Intron, Bio-tek, Korea) visualized by using Gel Doc™ XR Gel Documentation System (Bio-Rad, Hercules, CA, USA). The concentration and quality of the gDNA were determined by using a spectrophotometer (Smart-Spec™ plus spectrophotometer, BIO-RAD, Hercules, CA, USA). The gDNA was sent to the service provider Macrogen Inc. (Seoul-Korea) to be sequenced using Illumina NovaSeq® platform, library type: TruSeq Nano DNA (350), type of reads: paired-ends, read length: 151 bp.

### Pre-processing, genome assembly, and annotation

To assess the quality of the raw reads, FastQC v0.11.9<sup>21</sup> was used. Fastp<sup>22</sup> was used to trim the adaptor sequences and remove bad reads (too low quality, too short, or too many N). The sequence reads were *de novo* assembled into 36 contigs using SKESA v2.4.0<sup>23</sup> using the default parameters. The resulting 36-scaffolds draft genome sequence was submitted to NCBI. The draft genome was annotated using Rapid Annotations using Subsystems Technology (RASTtk) implemented in both PATRIC server<sup>24</sup> and in The Department of Energy Systems Biology Knowledgebase (KBase) server<sup>25</sup> using the default settings.

## Bioinformatics

Nine most closely related species with available published genomes (*Oceanobacillus picturae* Heshi-B3, *Oceanobacillus picturae* DMTMMB24, *Oceanobacillus ibeyensis* HTE831, *Oceanobacillus caeni* DSM-21910, *Virgibacillus halodenitrificans* PDDDB-F2, *Oceanobacillus oncorhynchi*, *Oceanobacillus massiliensis*, *Oceanobacillus limi* IBRC-M, *Oceanobacillus kimchii*-X50, ) were chosen to construct several phylogenetic trees as follow: a phylogenomic analysis was carried out via KBase server,<sup>25</sup> utilizing the species tree builder functionality, and OrthoANI (Orthologous Average Nucleotide Identity) utilizing the Orthologous Average Nucleotide Identity Tool (OAT) software.<sup>26</sup> In addition, a genomic signature distance phylogenetic tree was constructed via the GScompare server (<http://gscompare.ehu.eu/>) based on octanucleotides frequencies. A digital DNA-DNA hybridization was performed via Genome-to-Genome Distance Calculator 3.0 (GGDC)<sup>27</sup> implemented in TYGS server (<https://tygs.dsmz.de/>), a phylogenetic tree was inferred with FastME 2.1.6.1<sup>28</sup> from Genome Blast Distance Phylogeny (GBDP) distances calculated from genome sequences. The branch lengths are scaled in terms of GBDP distance formula d5. The numbers above branches are GBDP pseudo-bootstrap support values >60 % from 100 replications, with an average branch support of 80.6%. The tree was rooted at the midpoint.<sup>29</sup> The Clustered Regularly Interspaced Short Palindromic Repeats (CRISPR) were predicted by CRISPRCasFinder online program.<sup>30</sup> Pangenomic analysis was conducted using KBase Compute Pangenome and Pangenome Circle Plot function.<sup>25</sup> Circular graphical display of the distribution of the genome annotations was carried out via PATRIC server Comprehensive Genome Analysis function.<sup>31</sup>

### Accessing the genome sequence

The data from this draft genome project (the raw sequences and the assembled draft genome of 36 scaffolds) have been deposited at GenBank with BioProject ID PRJNA753452 and BioSample ID SAMN20694754.

## Data Set Interpretation

The draft genome of *Oceanobacillus jordanicus* strain GSFE11 had 36 contigs with a total length of 3 839 208 bp, with an N50 value of 377 721 bp, and G + C content of 39.09%. The number of coding genes was predicted to be 3961, of which 3893 genes were protein-coding and 68 genes were RNA coding. The predicted RNA coding genes consist of 59 transfer RNAs (tRNAs) and 9 rRNAs (7 5S, 1 16S, and 1 23S). The main features of the genome are presented in Table 1.

The whole genome-based taxonomic analysis showed that *O. jordanicus* strain GSFE11 was closely related to *O. picturae* as shown in Figure 1a. This conclusion was also supported by the comparison of genomic signatures results (Figure 1b) placing *O. jordanicus* GSFE11 as a close relative to *O. picturae*.

*Oceanobacillus jordanicus* GSFE11 has 62.7% digital DNA-DNA hybridization (dDDH) score, and 0.07% G + C% content difference with *O. picturae* DMTMMB24. This observed

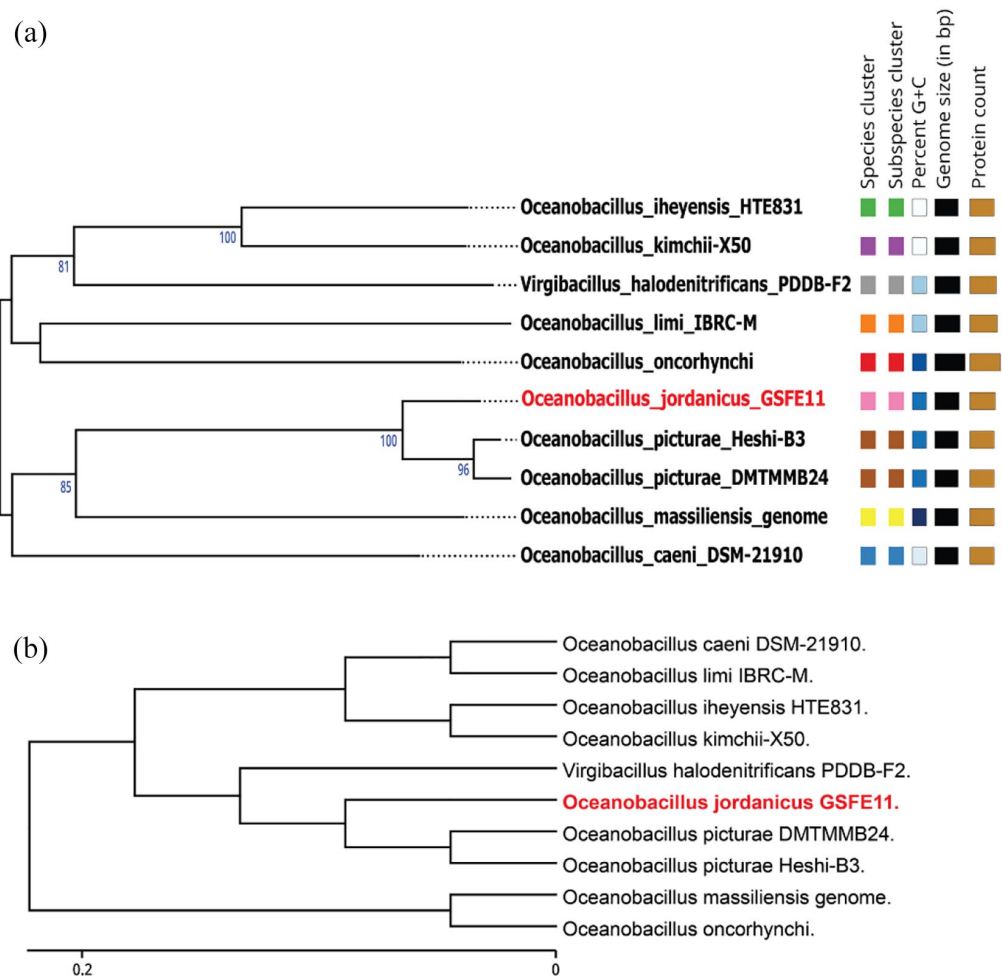
**Table 1.** Genome features of *Oceanobacillus jordanicus* strain GSFE11.

FEATURE	VALUE
Genome size (bp)	3839208
GC content	39.09%
Total number of genes	3961
Protein coding genes	3893
RNA coding genes	68
rRNA genes	9
tRNA gene	59
Predicted protein coding genes with function	2234
Plasmids	0
CRISPR repeats	1

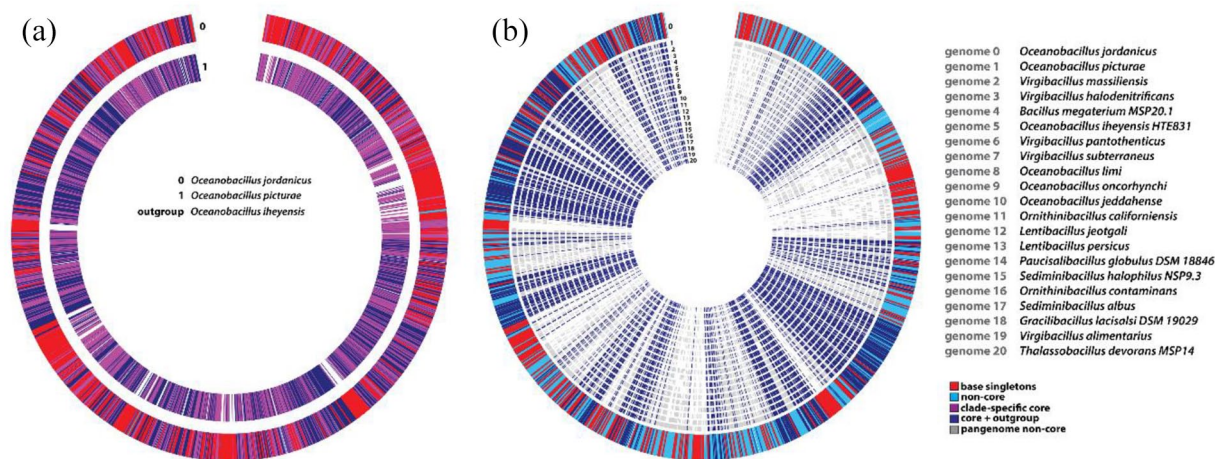
dDDH of 62.7% was lower than 70% which is the species boundary value for defining bacterial species as closely related species.<sup>32</sup> The difference in genome size and number of coding genes between *O. jordanicus* and *O. picturae* (Genome size ~3.8bp vs ~3.6bp, number of coding genes 3961 vs 3823, respectively). In addition, the difference in the genomic signature as seen in the second phylogenetic tree in Figure 1b, also supports our proposition that the isolated bacteria *O. jordanicus* is a new species.

To further assess the difference between *O. jordanicus* GSFE11 and other closely related species identified by whole-genome alignment (represented in the phylogenetic trees of Figure 1), we ran a pangenome analysis, which represents the collection of all genes found in a collection of related organisms grouped by sequence homology. First by identifying clade of specific genes between the genomes of *O. jordanicus* against *O. picturae* and with *O. ibeyensis* as an outer group (Figure 2a); then between the genome of *O. jordanicus* against all 20 closely related species identified during whole-genome alignment step (Figure 2b).

The differences in pangenome analysis results between *O. jordanicus* against *O. picturae*, represented by the high degree of



**Figure 1.** (a) Whole-genome sequence-based phylogenetic tree, species cluster has the same color code, the GC% is indicated in shades of blue, genome size and protein count is presented in black and brown bars, respectively and (b) genomic signatures based on phylogenetic tree and the frequencies of octanucleotides are presented at the scale under the tree.



**Figure 2.** Pangenome analysis results: (a) between the genomes of *O. jordanicus* against *O. picturae* and with *O. iheyensis* as an outer group, (b) between the genome of *O. jordanicus* against all 20 closely related. Red lines represent singletons, which are genes with no sequence homology to genes in any other genomes, cyan lines represent non-core genes, purple lines represent clade-specific core orthologs present in all but the outgroup genome, dark blue lines represent core ortholog sets with at least 1 gene from the ortholog set with a gene in each of the genomes, gray lines represent pangenome non-core, which are orthologs between Core and Singleton clusters present in more than 1 genome and fewer than all.

**Table 2.** Clustered Regularly Interspaced Short Palindromic Repeats (CRISPR) sequences present within *O. jordanicus* strain GSFE11 identified using CRISPRCasFinder.

ELEMENT	CRISPR ID/ CAS TYPE	START	END	SPACER/ GENE	REPEAT CONSENSUS/CAS GENES	DIRECTION	EVIDENCE LEVEL
CRISPR	Scaffold_15_1	316106	316211	1	ATTGTGAAACAGTGAGCAATCACCTT	ND	1

base singletons (unique sequences), further supports our classification of *O. jordanicus* GSFE11 as a new species.

Classification of CRISPR-Cas variants could capture the evolutionary relationships between species, and can help in comparative genomic analysis.<sup>33</sup> We were able to identify only one CRISPR system with 1 spacer (Table 2). While *O. picturae* DMTMMB24 genome has 2 CRISPR system with 2 spacers and different repeat consensus in comparison to *O. jordanicus* GSFE11.

Functional classification of the genes in *O. jordanicus* GSFE11 based on RASTtk annotation implemented in PATRIC server<sup>31</sup> was carried out. The annotation included 1328 hypothetical proteins and 2633 proteins with functional assignments (Table 3). The proteins with functional assignments included 828 proteins with Enzyme Commission (EC) numbers,<sup>34</sup> 701 with Gene Ontology (GO) assignments,<sup>35</sup> and 616 proteins that were mapped to KEGG pathways.<sup>36</sup> PATRIC annotation includes 2 types of protein families,<sup>37</sup> and this genome has 3501 proteins that belong to the genus-specific protein families (PLFams), and 3597 proteins that belong to the cross-genus protein families (PGFams).

When compared to annotations of close species present in the phylogenetic tree (Supplementary Figure 1), *O. jordanicus* has 3499 genes present in 3344 homolog families, and 461 singletons (Supplemental Table 1). It also showed that *O. jordanicus* has 3082 shared homolog families with *O. picturae*, and less

**Table 3.** Protein features of *O. jordanicus* strain GSFE11.

FEATURES	VALUE
Hypothetical proteins	1328
Proteins with functional assignments	2633
Proteins with EC number assignments	828
Proteins with GO assignments	701
Proteins with pathway assignments	616
Proteins with PATRIC genus-specific family (PLfam) assignments	3501
Proteins with PATRIC cross-genus family (PGfam) assignments	3597

than 2000 homologs with other related species (Supplemental Table 2). Further supporting the proposition that *O. jordanicus* is a new species.

The annotation showed a large number of the genes predicted (Supplemental Figure 2) are involved in the metabolism of carbohydrates, genes for xylose, fructose, and chitin, quinone cofactors phyloquinone and menaquinone biosynthesis (they function as an electron transporter in photosynthesis as a redox molecule). Genes associated with nitrogen, sulfur, phosphate and iron acquisition were present, in addition to genes involved in the biosynthesis of plant hormone auxin, such genes might be important for symbiotic plant-bacteria interaction.

**Table 4.** List of key specialty genes present in *Oceanobacillus jordanicus* GSFE11.

SPECIALTY GENES	GENES
Antibiotic inactivation enzyme	FosB, Mph(B) family
Antibiotic target modifying enzyme	Erm(A)
Efflux pump conferring antibiotic resistance	YkkCD
Protein altering cell wall charge conferring antibiotic resistance	GdpD, PgsA
Protein altering cell wall structure conferring antibiotic resistance	VanXY-unclassified
Regulator modulating expression of antibiotic resistance genes	LiaF, LiaR, LiaS, VanF/M-type
Siderophore	ABC-type Fe <sup>3+</sup> -siderophore
Phytohormones related	Auxin efflux carrier (AEC), Indole-3-glycerol phosphate synthase
Heavy metals resistance	Cobalt-zinc-cadmium resistance protein, cadmium, Lead, zinc and mercury transporting ATPase, Cadmium-transporting ATPase, Copper-translocating P-type ATPase, Cadmium efflux system accessory protein, Cobalt/zinc/cadmium resistance protein CzcD
Quinone cofactors biosynthesis	Demethylmenaquinone methyltransferase, O-succinylbenzoate synthase, Menaquinone-cytochrome C reductase iron-sulfur subunit, Menaquinone-cytochrome c reductase, cytochrome B subunit, Menaquinone-cytochrome C oxidoreductase, O-succinylbenzoic acid—CoA ligase, Naphthoate synthase, menaquinone biosynthesis methyltransferase, 1,4-dihydroxy-2-naphthoate polyprenyltransferase, 1,4-dihydroxy-2-naphthoyl-CoA hydrolase

Genes possibly involved in transport, cell motility, delivery systems, secretion, membrane proteins and plant cell wall modification, siderophores, transcriptional regulators, and substrate utilization were identified. Genes involved in detoxification and stress protection against heavy metals such as cobalt, zinc, cadmium, and chromium were present (Table 4). In addition to antibiotic resistance genes against fosfomycin and fluoroquinolones. Genes involved in bile hydrolysis were identified, hinting at a possible lifestyle of *O. jordanicus* GSFE11 as a gut microbe. (The full list of annotated genes is available online: BioProject ID PRJNA753452).

*O. jordanicus* strain GSFE11 has been shown to have a plant growth-promoting effect.<sup>10</sup> For instance, it was the most effective bacterial strain with antifungal activity against a very aggressive isolate of *Fusarium culmorum*. In addition, *O. jordanicus* GSFE11 was able to produce indole acetic acid (IAA) and has a set of genes that potentially contributed to an improved tolerance against drought and salinity in durum wheat. In the light of the current draft genome, future transcriptome and molecular analysis studies will help elucidate many of the hypothetical proteins predicted here and the possible mechanism by which such endophyte enhances the growth of plants. Bacterial whole genome sequencing followed by comparative genomic analysis also proved to be a necessary and sufficient procedure to distinguish between closely related bacterial species.<sup>38–40</sup> This approach will help improve our understanding and increase the discovery rate of new species in environmental samples.

### Author Contributions

Work was planned by RA and TA. Sample collections, identification and molecular work was done by RA. Bioinformatic analysis was done by TA. Manuscript was written by TA, and both authors read and approved the final manuscript.

### ORCID iD

Tareq Alhindi  <https://orcid.org/0000-0003-1350-9490>

### Supplemental Material

Supplemental material for this article is available online.

### REFERENCES

1. Ammari TG, Tahhan R, Abubaker S, et al. Soil salinity changes in the Jordan Valley potentially threaten sustainable irrigated agriculture. *Pedosphere*. 2013;23:376-384.
2. Gupta PK, Balyan HS, Sharma S, Kumar R. Genetics of yield, abiotic stress tolerance and biofortification in wheat (*Triticum aestivum* L. *Theor Appl Genet*. 2020;133:1569-1602.
3. Rasool S, Hameed A, Azooz MM, Siddiqi TO, Ahmad P. Salt stress: causes, types and responses of plants. In: Ahmad P, Azooz M, Prasad M (eds) *Ecophysiology and Responses of Plants under Salt Stress*. Springer; 2013;1-24.
4. Bazihizina N, Barrett-Lennard EG, Colmer TD. Plant growth and physiology under heterogeneous salinity. *Plant Soil*. 2012;354:1-19.
5. Chakraborty K, Basak N, Bhaduri D, et al. Ionic basis of salt tolerance in plants: nutrient homeostasis and oxidative stress tolerance. In: Hasanuzzaman M, Fujita M, Oku H, Nahar K, Hawrylak-Nowak B. (eds) *Plant Nutrients and Abiotic Stress Tolerance*. Springer; 2018;325-362.
6. Shahbaz M, Ashraf M. Improving salinity tolerance in cereals. *CRC Crit Rev Plant Sci*. 2013;32:237-249.
7. Etesami H, Glick BR. Halotolerant plant growth-promoting bacteria: prospects for alleviating salinity stress in plants. *Environ Exp Bot*. 2020;178:104124.
8. Nazli F, Mustafa A, Ahmad M, et al. A review on practical application and potentials of phytohormone-producing plant growth-promoting rhizobacteria for inducing heavy metal tolerance in crops. *Sustainability*. 2020;12:9056.

9. Morales-Cedeño LR, Orozco-Mosqueda MDC, Loeza-Lara PD, Parra-Cota FI, de Los Santos-Villalobos S, Santoyo G. Plant growth-promoting bacterial endophytes as biocontrol agents of pre- and post-harvest diseases: fundamentals, methods of application and future perspectives. *Microbiol Res.* 2021;242:126612.
10. Albdaawi RN, Khyami-Horani H, Ayad JY, Alananbeh KM, Al-Sayaydeh R. Isolation and characterization of halotolerant plant growth promoting rhizobacteria from durum wheat (*Triticum turgidum* subsp. durum) cultivated in saline areas of the dead sea region. *Front Microbiol.* 2019;10:1639.
11. Lee JS, Lim JM, Lee KC, Lee JC, Park YH, Kim CJ. *Virgibacillus koreensis* sp. nov., a novel bacterium from a salt field, and transfer of *Virgibacillus picturae* to the genus *Oceanobacillus* as *Oceanobacillus picturae* comb. nov. with emended descriptions. *Int J Syst Evol Microbiol.* 2006;56:251-257.
12. Kim YG, Choi DH, Hyun S, Cho BC. *Oceanobacillus profundus* sp. nov., isolated from a deep-sea sediment core. *Int J Syst Evol Microbiol.* 2007;57:409-413.
13. Whon TW, Jung MJ, Roh SW, et al. *Oceanobacillus kimchii* sp. nov. isolated from a traditional Korean fermented food. *J Microbiol.* 2010;48:862-866.
14. Namwong S, Tanasupawat S, Lee KC, Lee JS. *Oceanobacillus kapolis* sp. nov., from fermented shrimp paste in Thailand. *Int J Syst Evol Microbiol.* 2009;59:2254-2259.
15. Tominaga T, An SY, Oyaizu H, Yokota A. *Oceanobacillus soja* sp. nov. isolated from soy sauce production equipment in Japan. *J Gen Appl Microbiol.* 2009;55:225-232.
16. Lagier JC, Khelaifia S, Azhar EI, et al. Genome sequence of *Oceanobacillus picturae* strain S1, an halophilic bacterium first isolated in human gut. *Stand Genomic Sci.* 2015;10:91.
17. Yang LL, Tang SK, Chu X, Jiang Z, Xu LH, Zhi XY. *Oceanobacillus endoradicis* sp. nov., an endophytic bacterial species isolated from the root of *Paris polyphylla* Smith var. *yunnanensis*. *Antonie Van Leeuwenhoek.* 2016;109:957-964.
18. Christakis CA, Daskalogiannis G, Chatzaki A, et al. Endophytic bacterial isolates from halophytes demonstrate phytopathogen biocontrol and plant growth promotion under high salinity. *Front Microbiol.* 2021;12:1001.
19. El-Tarabily KA, Youssef T. Enhancement of morphological, anatomical and physiological characteristics of seedlings of the mangrove *Avicennia marina* inoculated with a native phosphate-solubilizing isolate of *Oceanobacillus picturae* under greenhouse conditions. *Plant Soil.* 2010;332:147-162.
20. Orhan F, Demirci A. Salt stress mitigating potential of halotolerant/halophilic plant growth promoting. *Geomicrobiol J.* 2020;37:663-669.
21. Andrews S. FastQC: a quality control tool for high throughput sequence data. 2010. <http://www.bioinformatics.babraham.ac.uk/projects/fastqc/>
22. Chen S, Zhou Y, Chen Y, Gu J. Fastp: an ultra-fast all-in-one FASTQ preprocessor. *Bioinformatics.* 2018;34:i884-i890.
23. Souvorov A, Agarwala R, Lipman DJ. SKESA: strategic k-mer extension for scrupulous assemblies. *Genome Biol.* 2018;19:153.
24. Brettin T, Davis JJ, Disz T, et al. RASTtk: a modular and extensible implementation of the RAST algorithm for building custom annotation pipelines and annotating batches of genomes. *Sci Rep.* 2015;5:1-6.
25. Arkin AP, Cottingham RW, Henry CS, et al. KBase: the United States department of energy systems biology knowledgebase. *Nat Biotechnol.* 2018;36:566-569.
26. Lee I, Ouk Kim Y, Park SC, Chun J. OrthoANI: an improved algorithm and software for calculating average nucleotide identity. *Int J Syst Evol Microbiol.* 2016;66:1100-1103.
27. Meier-Kolthoff JP, Auch AF, Klenk HP, Göker M. Genome sequence-based species delimitation with confidence intervals and improved distance functions. *BMC Bioinformatics.* 2013;14:60.
28. Lefort V, Desper R, Gascuel O. FastME 2.0: a comprehensive, accurate, and fast distance-based phylogeny inference program. *Mol Biol Evol.* 2015;32:2798-2800.
29. Farris JS. Estimating phylogenetic trees from distance matrices. *Am Nat.* 1972;106:645-668.
30. Couvin D, Bernheim A, Toffano-Nioche C, et al. CRISPRCasFinder, an update of CRISPRFinder, includes a portable version, enhanced performance and integrates search for Cas proteins. *Nucleic Acids Res.* 2018;46:W246-W251.
31. Davis JJ, Wattam AR, Aziz RK, et al. The PATRIC Bioinformatics resource center: expanding data and analysis capabilities. *Nucleic Acids Res.* 2020;48:D606-D612.
32. Auch AF, von Jan M, Klenk HP, Göker M. Digital DNA-DNA hybridization for microbial species delineation by means of genome-to-genome sequence comparison. *Stand Genomic Sci.* 2010;2:117-134.
33. Makarova KS, Koonin EV. Annotation and classification of CRISPR-Cas systems. *Methods Mol Biol.* 2015;1311:47-75.
34. Schomburg I, Chang A, Ebeling C, et al. BRENDA, the enzyme database: updates and major new developments. *Nucleic Acids Res.* 2004;32:D431-D433.
35. Ashburner M, Ball CA, Blake JA, et al. Gene ontology: tool for the unification of biology. The gene ontology consortium. *Nat Genet.* 2000;25:25-29.
36. Kanehisa M, Sato Y, Kawashima M, Furumichi M, Tanabe M. KEGG as a reference resource for gene and protein annotation. *Nucleic Acids Res.* 2016;44:D457-D462.
37. Davis JJ, Gerdes S, Olsen GJ, et al. PATtyFams: protein families for the microbial genomes in the PATRIC database. *Front Microbiol.* 2016;7:118.
38. Chan JZ, Halachev MR, Loman NJ, Constantinidou C, Pallen MJ. Defining bacterial species in the genomic era: insights from the genus *Acinetobacter*. *BMC Microbiol.* 2012;12:302.
39. Liang CY, Yang CH, Lai CH, Huang YH, Lin JN. Comparative genomics of 86 whole-genome sequences in the six species of the *Elizabethkingia* genus reveals intraspecific and interspecific divergence. *Sci Rep.* 2019;9:19167.
40. Maderankova D, Jugas R, Sedlar K, Vitek M, Skutkova H. Rapid bacterial species delineation based on parameters derived from genome numerical representations. *Comput Struct Biotechnol J.* 2019;17:118-126.