








# Genetic Loss of Sucrase-Isomaltase Function: Mechanisms, Implications, and Future Perspectives

Ninna Karsbæk Senftleber <sup>1,\*</sup>, Stina Ramne <sup>2,\*</sup>, Ida Moltke <sup>3</sup>, Marit Eika Jørgensen <sup>1,4,5</sup>, Anders Albrechtsen <sup>3</sup>, Torben Hansen <sup>2</sup>, Mette K Andersen <sup>2</sup>

<sup>1</sup>Clinical Research, Copenhagen University Hospital – Steno Diabetes Center Copenhagen, Herlev, Denmark; <sup>2</sup>Novo Nordisk Foundation Center for Basic Metabolic Research, Faculty of Health and Medical Sciences, University of Copenhagen, Copenhagen, Denmark; <sup>3</sup>Section for Computational and RNA Biology, Department of Biology, University of Copenhagen, Copenhagen, Denmark; <sup>4</sup>Centre for Public Health in Greenland, National Institute of Public Health, University of Southern Denmark, Copenhagen, Denmark; <sup>5</sup>Steno Diabetes Center Greenland, Nuuk, Greenland

\*These authors contributed equally to this work

Correspondence: Mette K Andersen, University of Copenhagen, Blegdamsvej 3B, Mærsk Tårnet, 8. sal, 2200 København N., Copenhagen, Denmark, Tel +45 35325282, Email [metteandersen@sund.ku.dk](mailto:metteandersen@sund.ku.dk)

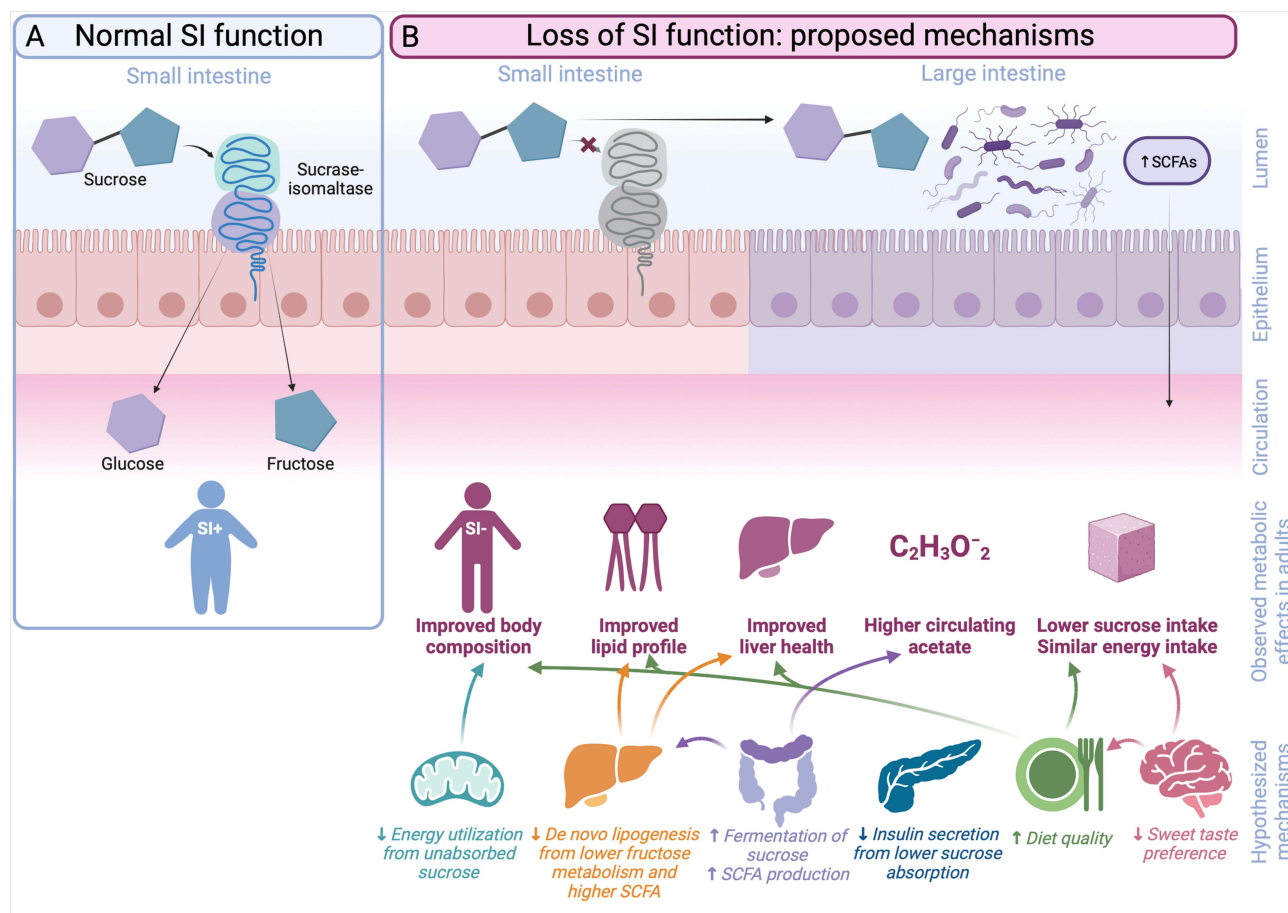
**Abstract:** Genetic variants causing loss of sucrase-isomaltase (SI) function result in malabsorption of sucrose and starch components and the condition congenital sucrase-isomaltase deficiency (CSID). The identified genetic variants causing CSID are very rare in all surveyed populations around the globe, except the Arctic-specific c.273\_274delAG loss-of-function (LoF) variant, which is common in the Greenlandic Inuit and other Arctic populations. In these populations, it is, therefore, possible to study people with loss of SI function in an unbiased way to elucidate the physiological function of SI, and investigate both short-term and long-term health effects of reduced small intestinal digestion of sucrose and starch. Importantly, a recent study of the LoF variant in Greenlanders reported that adult homozygous carriers have a markedly healthier metabolic profile. These findings indicate that SI inhibition could potentially improve metabolic health also in individuals not carrying the LoF variant, which is of great interest considering the massive number of individuals with obesity and type 2 diabetes worldwide. Therefore, the objectives of this review, are 1) to describe the biological role of SI, 2) to describe the metabolic impact of the Arctic *SI* LoF variant, 3) to reflect on potential mechanisms linking reduced SI function to metabolic health, and 4) to discuss what knowledge is necessary to properly evaluate whether SI inhibition is a potential therapeutic target for improving cardiometabolic health.

**Keywords:** sucrase-isomaltase, congenital sucrase-isomaltase deficiency, loss-of-function variants, cardiometabolic health, sucrose, Greenland, Inuit

## Sucrase-Isomaltase – Function and Loss-of-Function

Intake of added sugars has during the past decade received increasing attention as a potential contributing factor to the global epidemic increase in body weight and obesity-related comorbidities.<sup>1</sup> The sugar most commonly added to processed foods is sucrose, but sucrose is also naturally present in eg fruits and vegetables. Sucrose is a disaccharide consisting of one glucose and one fructose molecule, bound together by a glycosidic linkage. Intestinal absorption of sucrose as well as other carbohydrates requires that the saccharide chains are digested into monosaccharides. This digestion starts with the  $\alpha$ -amylases in the mouth and is finalized by the  $\alpha$ -glucosidases, maltase-glucoamylase and sucrase-isomaltase (SI), in the small intestine.<sup>2</sup>

The SI enzyme consists of two domains, sucrase and isomaltase, and is anchored to the brush-border membrane in the small intestine (Figure 1A). The isomaltase domain hydrolyzes  $\alpha$ -1,6-glycosidic linkages in isomaltose and oligosaccharides derived from amylase-cleaved starch and glycogen. The sucrase domain cleaves the  $\alpha$ -1,2-glycosidic linkages in sucrose to form glucose and fructose, and contributes to the cleavage of the  $\alpha$ -1,4-glycosidic linkage in maltose to form two glucose monosaccharides.<sup>3</sup> In humans, SI is responsible for 60–80% of the maltase activity in the intestine and almost all sucrase activity due to its high abundance and low substrate specificity.<sup>4</sup> Thus, SI is an essential enzyme for the



**Figure 1** Overview of sucrase-isomaltase function and implications of loss of sucrase-isomaltase function. Illustration of (A) normal sucrase-isomaltase (SI) function and (B) the proposed mechanisms of loss of SI function in the intestine, observed metabolic effects in adult homozygous carriers of the Arctic-specific SI LoF variant,<sup>28</sup> and the hypothesized mechanisms that may contribute to these metabolic effects. SCFAs, short-chain fatty acids; SI+, normal SI function; SI-, loss of SI function. Created with BioRender.com.

digestion of starchy foods and foods containing sugars, which are major components of the diet in most populations across the world.<sup>5,6</sup>

Loss of SI function results in malabsorption of sucrose, isomaltose, maltose, and other undigested starch components. These carbohydrates continue along the gastrointestinal (GI) tract where they increase the osmotic pressure and are metabolized by gut bacteria rather than by the host.<sup>3</sup> This condition is called congenital sucrase-isomaltase deficiency (CSID). In children, CSID is characterized by a range of GI symptoms, such as stomach pain, flatulence, and diarrhea, similar to symptoms of lactose intolerance. These symptoms generally become evident when children start consuming foods containing sucrose and are relieved when following dietary recommendations to consume a sucrose-free diet,<sup>7</sup> while restriction of starch generally is not necessary.<sup>8</sup> Besides GI symptoms, children with CSID may become malnourished, underweight, and dehydrated, leading to hospitalization in some cases.<sup>7</sup> Even though the condition persists in adulthood, symptoms seem to be reduced with age; hence, in adults the symptoms range from none, to increased bowel movement, flatulence, and diarrhea. Therefore, the condition may be misdiagnosed as eg, irritable bowel syndrome.<sup>3,9</sup> Given a correct diagnosis, some individuals with CSID are treated with enzymatic replacement therapy, allowing them to consume sucrose-containing meals with fewer GI symptoms.<sup>10</sup>

The diagnosis of CSID can be made either based on clinical investigations including assessment of symptoms, endoscopies, biopsies, and sucrose breath hydrogen tests, or genetic screening. Studying genetically diagnosed loss of SI function is the most robust and unbiased way of studying the health effects of impaired SI function, compared to studying

CSID diagnosed based on clinical investigations, where the specific cause and degree of reduction in SI function is unknown.

In this review, we will, therefore, focus on the effects of impaired SI function as a consequence of deleterious genetic variants at the *SI* gene.

## Genetic Variation in the Sucrase-Isomaltase Gene

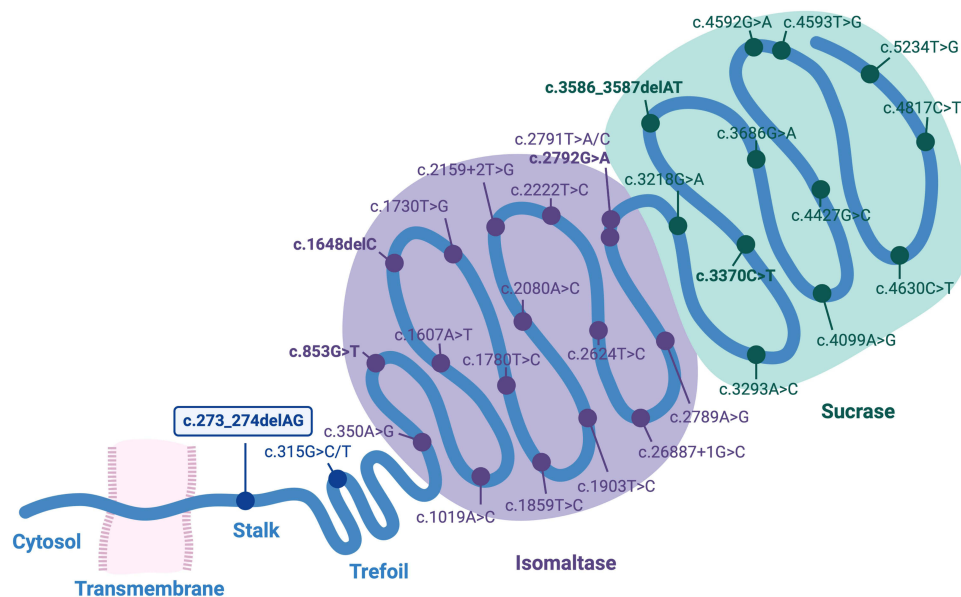
The *SI* gene, which encodes the SI enzyme, is located on chromosome 3 and harbors a number of rare pathogenic mutations across functional domains, including the sucrase domain, the isomaltase domain, the cytosolic tail, the transmembrane domain, the stalk region, and the trefoil 1 domain (Figure 2).<sup>11–25</sup> These variants are predicted to result in reduced SI function or complete loss of SI function,<sup>26</sup> and thereby CSID.

## Prevalence of Loss of Sucrase-Isomaltase Function Across the World

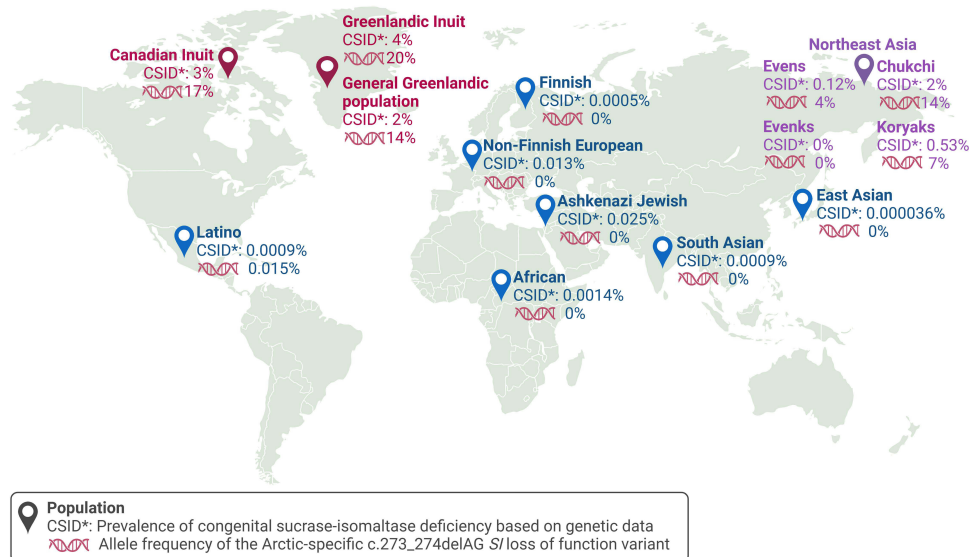
The prevalence of CSID is often reported to range between about 0.05–0.2% in European populations, and to be even lower in populations with African and Hispanic ancestry.<sup>4</sup> These prevalence numbers are based on clinical assessment of patients with GI symptoms. However, using a genetic definition of CSID, estimated as the proportion of homozygous carriers of *SI* variants categorized as pathogenic, likely pathogenic, or LoF, the prevalence is much lower across different populations with a prevalence of only 0.0005% to 0.013% in European populations<sup>26</sup> (Figure 3). Hence, the variants causing loss of SI function are very rare in large populations like Europeans, Africans, and south Asians, and most of them have only been observed in the heterozygous state or in a single homozygous carrier.<sup>26,27</sup> Therefore, it is not feasible to study the health effects of loss of SI function in these populations.

## Prevalence of Loss of Sucrase-Isomaltase Function in the Arctic

In contrast to most populations across the world, CSID is relatively common in Arctic populations, with a reported prevalence of 3–7% in Canadians and Alaskans based on clinical diagnosis.<sup>4</sup> Recently, the *SI* c.273\_274delAG variant was identified in a Canadian individual with CSID symptoms.<sup>18</sup> This variant is located in the stalk region of the enzyme (Figure 2) and is predicted to result in complete loss of SI function in homozygous individuals.<sup>18</sup> The allele frequency was found to be 17% in Canadian Inuit, 14% in the general Greenlandic population, and 20% in the Inuit ancestry



**Figure 2** Structure of the sucrase-isomaltase enzyme and location of genetic variants associated with congenital sucrase-isomaltase deficiency. Graphical representation of the SI enzyme depicting the pathogenic or likely pathogenic variants as defined by Leusse et al<sup>26</sup> Predicted LoF variants are defined as either introduction of stop-codon mutations, frameshift mutations, or disrupted splicing mutations, and are shown in bold. The Arctic-specific c.273\_274delAG variant is highlighted. Created with BioRender.com.



**Figure 3** Prevalence of CSID and allele frequencies of the c.273\_274delAG *SI* variant across populations. The prevalence of congenital sucrase-isomaltase deficiency estimated based on expected numbers of homozygous carriers (CSID\* of 1) the Arctic-specific *SI* c.273\_274delAG loss-of-function (LoF) variant in Canadian Inuit (red), Greenlanders (red), and Northeast Asians (purple)<sup>18,28,29</sup> or 2) pathogenic, likely pathogenic, or predicted LoF variants in GnomAD populations (blue).<sup>26</sup> The allele frequency of the Arctic-specific *SI* c.273\_274delAG LoF variant for each population is indicated with .<sup>18,27-29</sup> Created with BioRender.com.

proportion of the Greenlandic population, corresponding to a CSID prevalence of 3%, 2%, and 4%, respectively.<sup>18,28</sup> This *SI* LoF variant is almost absent in all populations except in Inuit populations and Siberians<sup>18,28,29</sup> (Figure 3) and overall, the differences in frequency of the *SI* c.273\_274delAG variant between populations explain the large variation in the prevalence of CSID across the world.

Despite the fact that the c.273\_274delAG variant is only in high frequency in Arctic populations, no signs of positive selection in the region near the variant have been reported. Hence, this variant could likely have reached a high frequency in Arctic populations due to genetic drift, which has a particularly large impact in small and isolated populations, and lack of negative selection.<sup>28</sup> The lack of negative selection is likely explained by the high content of protein and fat and low content carbohydrates and sugar, in the traditional Inuit diet.<sup>30</sup> This diet may have allowed carriers of the genetic variant to remain asymptomatic, until a few decades ago when western foods high in sucrose and starch were introduced to Greenland. Hence, lack of negative selection together with genetic drift likely resulted in c.273\_274delAG being common in Arctic populations including the Greenlandic Inuit.<sup>28</sup>

### Health Effects of *SI* Loss-of-Function or Inhibition

The Arctic-specific *SI* variant is the only known *SI* LoF variant that is sufficiently common to enable studies of the potential health impact of loss of *SI* function, by comparing homozygous carriers of the variant, who have no *SI* function, with the rest of the population. Alternatively, insights can be gained by studying the impact of the  $\alpha$ -glucosidase inhibitors, acarbose, voglibose, and miglitol. These  $\alpha$ -glucosidase inhibitors are anti-diabetic drugs, which reduce the degradation of carbohydrates by inhibiting different combinations of digestive enzymes, including *SI*.<sup>31</sup> The  $\alpha$ -glucosidase inhibitors are unspecific in their inhibition but have the advantage of the possibility to study large sample sizes.

A recent study showed that Greenlandic adults who are homozygous carriers of the Arctic-specific *SI* LoF variant had a markedly healthier metabolic profile compared to the rest of the Greenlandic population.<sup>28</sup> They had a healthier body composition, with a 2 kg/m<sup>2</sup> lower BMI and almost 5 kg lower body weight. These effect sizes are much larger than those reported for any common genetic variant associated with BMI in Europeans.<sup>32</sup> The homozygous variant carriers also had a healthier lipid profile, particularly with 0.3 mmol/L lower levels of serum triglycerides. This effect size is substantial and of similar magnitude as the effect of the lipid-lowering drugs statins.<sup>33</sup> Interestingly, the homozygous variant carriers had twice as high levels of serum acetate compared to heterozygous and wild-type individuals (0.056

mmol/L higher) (Figure 1B). These observations seemed to be independent of the lower intake of added sugar, which was also observed among homozygous carriers.<sup>28</sup> Interestingly, the healthy phenotype was confirmed by a *SI* knock-out mouse model, but only when their diet included sucrose. The mouse model also supported the link between sucrose intake and markedly higher levels of plasma acetate.<sup>28</sup> The healthier metabolic phenotype could be expected to result in a lower risk of cardiometabolic diseases, but no significant effects were seen on measures of glucose homeostasis, type 2 diabetes, or cardiovascular disease.<sup>28</sup> However, a larger sample size and/or longer follow-up time is required to determine these potential relationships.

To our knowledge, only Andersen et al<sup>28</sup> have currently assessed cardiometabolic effects of loss of SI function, likely due to the rarity of LoF variants outside the Arctic. Additionally, this study also provided potential explanations for the healthier phenotype observed among the homozygous carriers of the *SI* LoF variant.

## Contributing Mechanisms to Health Effects of SI Loss-of-Function or Inhibition

### Increased Gut Fermentation of Undigested Carbohydrates

It was hypothesized that the healthy metabolic effects associated with the loss of SI function were mediated through increased gut bacterial fermentation and possible alterations in gut microbiome composition, leading to increased production of short-chain fatty acids such as butyrate, propionate, and acetate.<sup>28</sup> Consistent with this, the circulating level of acetate was twice as high in homozygous carriers of the Arctic-specific *SI* LoF variant compared to the rest of the Greenlandic population and increased in response to a sucrose load in the *SI* knock-out mouse model as previously mentioned.<sup>28</sup> This hypothesis suggests that undigested sucrose serves as a type of dietary fiber, which tends to have beneficial effects on gut microbiome composition.<sup>34</sup> However, it is unknown if the health-promoting effects are mediated by acetate alone, or by a combination of acetate, propionate, and butyrate, as all these short-chain fatty acids have been linked to modulation of metabolic health through a wide range of mechanisms.<sup>35</sup>

Two studies have directly assessed the association between reduced SI function and gut bacterial composition, by studying the effect of a relatively common variant in European populations estimated to result in a modest reduction in SI enzyme activity of about 35%.<sup>36</sup> This variant was associated with a lower abundance of *Parabacteroides*,<sup>36</sup> a genus that is potentially linked to body weight and inflammation,<sup>37,38</sup> and with nominally significant altered abundance of certain carbohydrate-digesting genera, including higher abundance of *Blautia*,<sup>39</sup> a genus that might play a role in metabolic and inflammatory diseases.<sup>40</sup> As the studied European variant only results in a modest reduction in SI activity, the effect of the Arctic-specific complete LoF variant on microbiome composition could potentially be greater.

The link between maldigestion of carbohydrates and alterations in gut bacterial composition is also supported by genome-wide association studies, showing that variants affecting the expression of the lactase gene, which causes lactase persistence, are among the host genetic variants most strongly associated with microbiome composition, particularly with the abundance of the *Bifidobacterium* genus.<sup>41–44</sup> Species within the *Bifidobacterium* genus have repeatedly been observed to increase in abundance following fiber and prebiotic supplementation and have been suggested to contribute to reducing body weight and metabolic risk markers after such interventions.<sup>45</sup> *Bifidobacteria* can metabolize saccharides via a unique pathway using fructose-6-phosphoketolase, the so-called “bifid shunt.”<sup>46</sup> Considering the similarities between lactose intolerance and CSID, effects on the microbiome from loss of SI function could be expected. Interventions with  $\alpha$ -glucosidase inhibitors have also demonstrated alterations in the gut microbiome, many of which also point to an effect on increased *Bifidobacterium* abundance among many other microbial changes,<sup>47–51</sup> as well as an increase in total fecal output of short-chain fatty acids.<sup>52</sup>

On the contrary, adverse metabolic effects of changes in the gut bacterial composition, due to a high intake of dietary sugars have been the topic of many recent studies.<sup>53,54</sup> However, these studies are generally performed in rodents with normal digestion of sucrose or focus particularly on the intake of fructose. Hence, whether these findings are relevant for understanding the effects of loss of SI function on the gut bacterial composition is uncertain. Nevertheless, the research linking SI function to gut microbiome composition is at present very limited, and the few

identified associations with single genera are difficult to interpret as it remains elusive what actually constitutes healthy gut microbiome changes.

## Improved Diet Quality

It is also likely, that the GI symptoms caused by intake of sucrose-rich foods in homozygous carriers of the Arctic-specific *SI* LoF variant, could result in a generally healthier diet in these individuals, as a result of increased dietary awareness, as well as sucrose-rich foods being replaced by healthier, less energy-dense alternatives. Greenlandic homozygous carriers of the *SI* LoF variant reported on average 29 g/day lower intake of added sucrose and an overall lower intake of carbohydrates,<sup>28</sup> thus supporting this hypothesis. There was no difference in self-reported total energy intake. However, the intake estimations were based on a relatively short semi-quantitative food frequency questionnaire. Although there are dietary recommendations for individuals with CSID,<sup>55</sup> the literature on the actual dietary patterns of these individuals is very limited. Therefore, it would be of interest to study the dietary intake in greater detail.

## Reduced Nutrient and Energy Utilization

Lower body weight could potentially be expected among individuals with loss of SI function owing to unutilized energy from maldigestion of carbohydrates. When particularly fast-digesting carbohydrates are unabsorbed, a lower postprandial glycemic load can also be expected, which may be metabolically beneficial. Although no effect of loss of SI function was observed on markers of glucose and insulin homeostasis in the fasted state in Greenlanders,<sup>28</sup> children with CSID have a reduced plasma glucose response following a sucrose load.<sup>56,57</sup> Furthermore, based on studies on  $\alpha$ -glucosidase inhibitors, one might expect a lower glycemic response to a carbohydrate-rich mixed meal when SI function is inhibited.<sup>35,58</sup>

## Future Perspectives

Taken together, previous studies of genetic loss of SI function, as well as studies on  $\alpha$ -glucosidase inhibitors, suggest that SI inhibition could be a treatment target for obesity and general metabolic health. However, there are still a number of questions related to the underlying mechanisms and long-term effects that remain to be addressed. In particular, longitudinal investigations of cardiometabolic disease incidence warrant further study in larger sample sizes. Moreover, it would also be of interest to study incidence data of other conditions such as cancer, as a meta-analysis found that treatment with  $\alpha$ -glucosidase inhibitors was associated with a reduced risk of cancer in type 2 diabetes patients, particularly GI cancer (OR = 0.83, 95% CI = 0.71–0.97).<sup>59</sup>

## Understanding the Underlying Mechanisms

In future studies, it will be interesting to investigate the path of sucrose in individuals with loss of SI function. Specifically, it will be interesting to investigate the impact of undigested sucrose in the distal gut on the composition of the gut bacteria and the fecal and circulating metabolome, including the concentration of short-chain fatty acids. If the hypothesized link between undigested sucrose in the distal gut and increased levels of short-chain fatty acids in circulation can be verified, it would be important to follow the metabolic path and identify the specific target tissues of short-chain fatty acids, as well as other metabolites, identified to be altered in concentration in individuals with loss of SI function.

Interestingly, previous studies have indicated that some sucrose enters the circulation as an intact disaccharide and well-controlled biomarker validation studies have demonstrated that the excreted amount of sucrose and fructose in urine over 24 hr is highly proportional to the intake of total sugars, although only around 0.05% of ingested sucrose and fructose are excreted.<sup>60–62</sup> Understanding how and why sucrose can enter systemic metabolism, and if this is affected by the loss of SI function, is crucial to fully understand the potential metabolic benefits of inhibiting SI.

## Taste Preferences and Perceptions

Limited evidence exists on taste and food preferences in individuals with loss of SI function. Children with fructose intolerance quickly develop a strong aversion to sweet foods in response to symptoms caused by these.<sup>63,64</sup> Though not

investigated thoroughly in individuals with loss of SI function, this appears to be rarer in children with decreased intestinal SI levels.<sup>65</sup>

In a mouse study, SI as well as other disaccharide-hydrolyzing enzymes like maltase-glucoamylase have been found to be expressed in the taste cells that hold the major sweet taste receptors for sugars in both humans and mice (T1R2 and T1R3). Interestingly, when treating the tongue in mice with the  $\alpha$ -glucosidase inhibitors miglitol or voglibose, the gustatory nerve response to sucrose decreased by 40% and to maltose by 25% for both inhibitors.<sup>66</sup> This indicates that SI could play a role in perception of sweet taste from sucrose. Individuals with loss of SI function might, therefore, be less sensitive towards sweet taste from sucrose and maybe carbohydrates in general. Alterations in sweet taste perception in individuals with loss of SI function might affect dietary intake if sweet foods appear less sweet and thereby less appealing, thus potentially contributing to the healthier phenotype observed among Greenlandic homozygous *SI* LoF variant carriers.<sup>28</sup>

## Assessment of Possible Adverse Effects of SI Inhibition

The potential of inhibiting SI as a drug target for prevention and management of cardiometabolic disease must, of course, be evaluated in perspective of adverse effects, eg GI discomfort. An SI-inhibiting drug could have similar GI side effects as the  $\alpha$ -glucosidase inhibitors, resulting in diarrhea and bloating when consuming carbohydrates. The  $\alpha$ -glucosidase inhibitors are therefore generally not well tolerated by patients.<sup>67</sup> However, an SI-inhibiting drug would target one specific enzyme, and fewer GI side effects may therefore be expected than from  $\alpha$ -glucosidase inhibitors. This is in line with observations in Greenlanders, where no significant differences were reported for GI symptoms or overall health perception in homozygous carriers of the Arctic-specific *SI* LoF variant compared to the rest of the population.<sup>28</sup>

These potential side effects and other long-term effects of an SI-inhibiting drug can be studied further in Inuit populations, where the frequency of the *SI* LoF variant is high. However, it would require a relatively large study population and long follow-up time to identify rare, as well as long-term, side effects. Therefore, studies on  $\alpha$ -glucosidase inhibitors might also provide insights.

## Concluding Remarks

CSID is rare in most populations but prevalent in Arctic populations due to the Arctic-specific c.273\_274delAG *SI* LoF variant. In children, CSID is associated with GI symptoms, which are often treated with dietary modifications or enzyme replacement to restore SI function. However, studies of Greenlandic adult carriers of the Arctic-specific *SI* LoF variant indicate that inhibition of SI could be a possible treatment of metabolic diseases, including obesity. Additional studies are needed to understand the underlying mechanisms, potential benefits, and side effects of SI inhibition. Moreover, there is a great potential of obtaining a deeper understanding of carbohydrate metabolism through the unique Arctic-specific *SI* LoF variant.

## Funding

Novo Nordisk Foundation Center for Basic Metabolic Research is an independent Research Center, based at the University of Copenhagen, Denmark, and partially funded by an unconditional donation from the Novo Nordisk Foundation ([www.cbmr.ku.dk](http://www.cbmr.ku.dk)) (Grant number NNF18CC0034900).

## Disclosure

NKS received funding from The Greenland Institute of Natural Resources (postdoctoral grant number 80.045) and The Greenlandic Research Council; held shares in Novo Nordisk AS, but sold in 2022. IM was supported by a Danish National Research Foundation Award (DNRF 143). MEJ received grants from the Independent Research Fund Denmark (grant number 1030-00363B); research grants from Boehringer Ingelheim, Novo Nordisk AS, and Sanofi Aventis, and holds shares in Novo Nordisk AS. TH was supported by a grant from Novo Nordisk Foundation (Grant number 0064142). The authors report no other conflicts of interest in this work

## References

1. Stanhope KL. Sugar consumption, metabolic disease and obesity: the state of the controversy. *Crit Rev Clin Lab Sci.* 2016;53(1):52–67. doi:10.3109/10408363.2015.1084990
2. Gericke B, Amiri M, Naim HY. The multiple roles of sucrase-isomaltase in the intestinal physiology. *Mol Cell Pediatr.* 2016;3(1):2.
3. Treem WR. Congenital sucrase-isomaltase deficiency. *J Pediatr Gastroenterol Nutr.* 1995;21(1):1–14.
4. Treem WR. Clinical aspects and treatment of congenital sucrase-isomaltase deficiency. *J Pediatr Gastroenterol Nutr.* 2012;55(Suppl 2):S7–13.
5. Azaïs-Braesco V, Sluik D, Maillot M, Kok F, Moreno LA. A review of total & added sugar intakes and dietary sources in Europe. *Nutr J.* 2017;16(1):6.
6. Galgani J, Ravussin E. Energy metabolism, fuel selection and body weight regulation. *Int J Obes.* 2008;32(Suppl7):S109–19.
7. Gudmand-Høyer E. Sucrose malabsorption in children: a report of thirty-one Greenlanders. *J Pediatr Gastroenterol Nutr.* 1985;4(6):873–877.
8. Sucrose malabsorption. *Br Med J.* 1977;1(6076):1558–1559. Available from: <http://www.jstor.org/stable/20414836>. Accessed 15 March 2023.
9. Kim SB, Calmet FH, Garrido J, Garcia-Buitrago MT, Moshiree B. Sucrase-isomaltase deficiency as a potential masquerader in irritable bowel syndrome. *Dig Dis Sci.* 2020;65(2):534–540.
10. Puntis JW, Zamvar V. Congenital sucrase-isomaltase deficiency: diagnostic challenges and response to enzyme replacement therapy. *Arch Dis Child.* 2015;100(9):869–871. doi:10.1136/archdischild-2015-308388
11. Capalbo A, Valero RA, Jimenez-Almazan J, et al. Optimizing clinical exome design and parallel gene-testing for recessive genetic conditions in preconception carrier screening: translational research genomic data from 14,125 exomes. *PLoS Genet.* 2019;15(10):e1008409. doi:10.1371/journal.pgen.1008409
12. Ceyhan-Birsoy O, Murry JB, Machini K, et al. Interpretation of genomic sequencing results in healthy and ill newborns: results from the babyseq project. *Am J Hum Genet.* 2019;104(1):76–93.
13. Gericke B, Amiri M, Scott CR, Naim HY. Molecular pathogenicity of novel sucrase-isomaltase mutations found in congenital sucrase-isomaltase deficiency patients. *Biochim Biophys Acta.* 2017;1863(3):817–826.
14. Haberman Y, Di Segni A, Loberman-Nachum N, et al. Congenital sucrase-isomaltase deficiency: a novel compound heterozygous mutation causing aberrant protein localization. *J Pediatr Gastroenterol Nutr.* 2017;64(5):770–776.
15. Husein DM, Wanen D, Marten LM, Zimmer K-P, Naim HY. Heterozygotes are a potential new entity among homozygotes and compound heterozygotes in congenital sucrase-isomaltase deficiency. *Nutrients.* 2019;11(10):2290.
16. Jacob R, Zimmer K-P, Schmitz J, Naim HY. Congenital sucrase-isomaltase deficiency arising from cleavage and secretion of a mutant form of the enzyme. *J Clin Invest.* 2000;106(2):281–287.
17. Keiser M, Alfalah M, Pröpsting MJ, Castelletti D, Naim HY. Altered folding, turnover, and polarized sorting act in concert to define a novel pathomechanism of congenital sucrase-isomaltase deficiency. *J Biol Chem.* 2006;281(20):14393–14399.
18. Marcadier JL, Boland M, Scott CR, et al. Congenital sucrase-isomaltase deficiency: identification of a common Inuit founder mutation. *Cmaj.* 2015;187(2):102–107.
19. Naim HY, Heine M, Zimmer K-P. Congenital sucrase-isomaltase deficiency: heterogeneity of inheritance, trafficking, and function of an intestinal enzyme complex. *J Pediatr Gastroenterol Nutr.* 2012;55:5.
20. Ouwendijk J, Moolenaar CE, Peters WJ, et al. Congenital sucrase-isomaltase deficiency. Identification of a glutamine to proline substitution that leads to a transport block of sucrase-isomaltase in a pre-Golgi compartment. *J Clin Invest.* 1996;97(3):633–641.
21. Ritz V, Alfalah M, Zimmer K-P, Schmitz J, Jacob R, Naim HY. Congenital sucrase-isomaltase deficiency because of an accumulation of the mutant enzyme in the endoplasmic reticulum. *Gastroenterology.* 2003;125(6):1678–1685.
22. Sander P, Alfalah M, Keiser M, et al. Novel mutations in the human sucrase-isomaltase gene (SI) that cause congenital carbohydrate malabsorption. *Hum Mutat.* 2006;27(1):119.
23. Spodsberg N, Jacob R, Alfalah M, Zimmer K-P, Naim HY. Molecular basis of aberrant apical protein transport in an intestinal enzyme disorder. *J Biol Chem.* 2001;276(26):23506–23510.
24. Uhrich S, Wu Z, Huang JY, Scott CR. Four mutations in the SI gene are responsible for the majority of clinical symptoms of CSID. *J Pediatr Gastroenterol Nutr.* 2012;55(Suppl 2):S34–5.
25. Alfalah M, Keiser M, Leeb T, Zimmer KP, Naim HY. Compound heterozygous mutations affect protein folding and function in patients with congenital sucrase-isomaltase deficiency. *Gastroenterology.* 2009;136(3):883–892.
26. de Leusse C, Roman C, Roquelaure B, Fabre A. Estimating the prevalence of congenital disaccharidase deficiencies using allele frequencies from gnomAD. *Arch Pediatr.* 2022;29(8):599–603.
27. Karczewski KJ, Francioli LC, Tiao G, et al. The mutational constraint spectrum quantified from variation in 141,456 humans. *Nature.* 2020;581(7809):434–443.
28. Andersen MK, Skotte L, Jørsboe E, et al. Loss of sucrase-isomaltase function increases acetate levels and improves metabolic health in Greenlandic cohorts. *Gastroenterology.* 2022;162(4):1171–82.e3.
29. Malyarchuk BA, Derenko MV, Denisova GA. The frequency of inactive sucrase-isomaltase variant in indigenous populations of Northeast Asia. *Russ J Genet.* 2017;53(9):1052–1054.
30. Pars T, Osler M, Bjerregaard P. Contemporary use of traditional and imported food among Greenlandic Inuit. *Arctic.* 2001;54(1):22–31.
31. Bischoff H. The mechanism of alpha-glucosidase inhibition in the management of diabetes. *Clin Invest Med.* 1995;18(4):303–311.
32. Yengo L, Sidorenko J, Kemper KE, et al. Meta-analysis of genome-wide association studies for height and body mass index in ~700000 individuals of European ancestry. *Hum Mol Genet.* 2018;27(20):3641–3649.
33. Stein EA, Lane M, Laskarzewski P. Comparison of statins in hypertriglyceridemia. *Am J Cardiol.* 1998;81(4a):66b–9b.
34. Cronin P, Joyce SA, O'Toole PW, O'Connor EM. Dietary fibre modulates the gut microbiota. *Nutrients.* 2021;13:5.
35. Alsema M, Ruijgrok C, Blaak EE, et al. Effects of alpha-glucosidase-inhibiting drugs on acute postprandial glucose and insulin responses: a systematic review and meta-analysis. *Nutr Diabetes.* 2021;11(1):11.
36. Henström M, Diekmann L, Bonfiglio F, et al. Functional variants in the sucrase-isomaltase gene associate with increased risk of irritable bowel syndrome. *Gut.* 2018;67(2):263–270.
37. Cui Y, Zhang L, Wang X, et al. Roles of intestinal Parabacteroides in human health and diseases. *FEMS Microbiol Lett.* 2022;369:1.
38. Lecomte V, Kaakoush NO, Maloney CA, et al. Changes in gut microbiota in rats fed a high fat diet correlate with obesity-associated metabolic parameters. *PLoS One.* 2015;10(5):e0126931.



39. Thingholm L, Rühlemann M, Wang J, et al. Sucrase-isomaltase 15Phe IBS risk variant in relation to dietary carbohydrates and faecal microbiota composition. *Gut*. 2019;68(1):177–178.
40. Liu X, Mao B, Gu J, et al. Blautia-a new functional genus with potential probiotic properties? *Gut Microb*. 2021;13(1):1–21.
41. Blekhman R, Goodrich JK, Huang K, et al. Host genetic variation impacts microbiome composition across human body sites. *Genome Biol*. 2015;16(1):191.
42. Bonder MJ, Kurilshikov A, Tigchelaar EF, et al. The effect of host genetics on the gut microbiome. *Nat Genet*. 2016;48(11):1407–1412.
43. Goodrich Julia K, Davenport Emily R, Beaumont M, et al. Genetic Determinants of the gut microbiome in UK twins. *Cell Host Microbe*. 2016;19(5):731–743.
44. Lopera-Maya EA, Kurilshikov A, van der Graaf A, et al. Effect of host genetics on the gut microbiome in 7738 participants of the Dutch microbiome project. *Nat Genet*. 2022;54(2):143–151.
45. Zhao L, Zhang F, Ding X, et al. Gut bacteria selectively promoted by dietary fibers alleviate type 2 diabetes. *Science*. 2018;359(6380):1151–1156.
46. Pokusaeva K, Fitzgerald GF, van Sinderen D. Carbohydrate metabolism in Bifidobacteria. *Genes Nutr*. 2011;6(3):285–306.
47. Cao TTB, Wu K-C, Hsu J-L, et al. Effects of non-insulin anti-hyperglycemic agents on gut microbiota: a systematic review on human and animal studies. *Front Endocrinol*. 2020;11:1.
48. Gu Y, Wang X, Li J, et al. Analyses of gut microbiota and plasma bile acids enable stratification of patients for antidiabetic treatment. *Nat Commun*. 2017;8(1):1785.
49. Su B, Liu H, Li J, et al. Acarbose treatment affects the serum levels of inflammatory cytokines and the gut content of bifidobacteria in Chinese patients with type 2 diabetes mellitus. *J Diabetes*. 2015;7(5):729–739.
50. Takewaki F, Nakajima H, Takewaki D, et al. Habitual dietary intake affects the altered pattern of gut microbiome by acarbose in patients with type 2 diabetes. *Nutrients*. 2021;13:6.
51. Zhang F, Wang M, Yang J, et al. Response of gut microbiota in type 2 diabetes to hypoglycemic agents. *Endocrine*. 2019;66(3):485–493.
52. Holt PR, Atillasoy E, Lindenbaum J, et al. Effects of acarbose on fecal nutrients, colonic pH, and short-chain fatty acids and rectal proliferative indices. *Metabolism*. 1996;45(9):1179–1187.
53. Kawano Y, Edwards M, Huang Y, et al. Microbiota imbalance induced by dietary sugar disrupts immune-mediated protection from metabolic syndrome. *Cell*. 2022;185(19):3501–19.e20.
54. Zhao S, Jang C, Liu J, et al. Dietary fructose feeds hepatic lipogenesis via microbiota-derived acetate. *Nature*. 2020;579(7800):586–591.
55. Uhrskov U, Andersen L. *Kostvejledning: Til personer, der har problemer med at tåle sukker og mælk. Sakkrose- & Laktoseintolerans*. Nuuk: Departementet for Sundhed og Infrastruktur & Ernærings- og Motionsrådet; 2012.
56. Prader A, Auricchio S. Defects of intestinal disaccharide absorption. *Annu Rev Med*. 1965;16:345–358.
57. Geng L, Li DY, Ou W, et al. Congenital sucrase-isomaltase deficiency: an under-diagnosed disease in Chinese children. *BMC Pediatr*. 2014;14:11.
58. Chiasson JL, Josse RG, Gomis R, Hanefeld M, Karasik A, Laakso M. Acarbose for prevention of type 2 diabetes mellitus: the STOP-NIDDM randomised trial. *Lancet*. 2002;359(9323):2072–2077.
59. Zhao Y, Wang Y, Lou H, Shan L. Alpha-glucosidase inhibitors and risk of cancer in patients with diabetes mellitus: a systematic review and meta-analysis. *Oncotarget*. 2017;8(46):81027–81039.
60. Joosen AMCP, Kuhnle GGC, Runswick SA, Bingham SA. Urinary sucrose and fructose as biomarkers of sugar consumption: comparison of normal weight and obese volunteers. *Int J Obes*. 2008;32(11):1736–1740.
61. Tasevska N, Runswick SA, McTaggart A, Bingham SA. Urinary sucrose and fructose as biomarkers for sugar consumption. *Cancer Epidemiol Biomarkers Prev*. 2005;14(5):1287–1294.
62. Tasevska N, Sagi-Kiss V, Palma-Duran SA, et al. Investigating the performance of 24-h urinary sucrose and fructose as a biomarker of total sugars intake in US participants – a controlled feeding study. *Am J Clin Nutr*. 2021;114(2):721–730.
63. Ali M, Rellos P, Cox TM. Hereditary fructose intolerance. *J Med Genet*. 1998;35(5):353–365.
64. Yasawy MI, Folsch UR, Schmidt WE, Schwend M. Adult hereditary fructose intolerance. *World J Gastroenterol*. 2009;15(19):2412–2413.
65. Burgess EA, Levin B, Mahalanabis D, Tonge RE. Hereditary sucrose intolerance: levels of sucrase activity in jejunal mucosa. *Arch Dis Child*. 1964;39(207):431–443.
66. Sukumaran SK, Yee KK, Iwata S, et al. Taste cell-expressed  $\alpha$ -glucosidase enzymes contribute to gustatory responses to disaccharides. *Proc Natl Acad Sci USA*. 2016;113(21):6035–6040.
67. Hedrington MS, Davis SN. Considerations when using alpha-glucosidase inhibitors in the treatment of type 2 diabetes. *Expert Opin Pharmacother*. 2019;20(18):2229–2235.

## The Application of Clinical Genetics

Dovepress

### Publish your work in this journal

The Application of Clinical Genetics is an international, peer-reviewed open access journal that welcomes laboratory and clinical findings in the field of human genetics. Specific topics include: Population genetics; Functional genetics; Natural history of genetic disease; Management of genetic disease; Mechanisms of genetic disease; Counselling and ethical issues; Animal models; Pharmacogenetics; Prenatal diagnosis; Dysmorphology. The manuscript management system is completely online and includes a very quick and fair peer-review system, which is all easy to use. Visit <http://www.dovepress.com/testimonials.php> to read real quotes from published authors.

Submit your manuscript here: <https://www.dovepress.com/the-application-of-clinical-genetics-journal>