

SCIENTIFIC REPORTS



OPEN

Factors controlling bark decomposition and its role in wood decomposition in five tropical tree species

Received: 19 February 2016
Accepted: 08 September 2016
Published: 04 October 2016

Gbadamassi G. O. Dossa^{1,2,3}, Ekananda Paudel^{1,2,3}, Kunfang Cao^{1,4}, Douglas Schaefer¹ & Rhett D. Harrison^{2,5}

Organic matter decomposition represents a vital ecosystem process by which nutrients are made available for plant uptake and is a major flux in the global carbon cycle. Previous studies have investigated decomposition of different plant parts, but few considered bark decomposition or its role in decomposition of wood. However, bark can comprise a large fraction of tree biomass. We used a common litter-bed approach to investigate factors affecting bark decomposition and its role in wood decomposition for five tree species in a secondary seasonal tropical rain forest in SW China. For bark, we implemented a litter bag experiment over 12 mo, using different mesh sizes to investigate effects of litter meso- and macro-fauna. For wood, we compared the decomposition of branches with and without bark over 24 mo. Bark in coarse mesh bags decomposed 1.11–1.76 times faster than bark in fine mesh bags. For wood decomposition, responses to bark removal were species dependent. Three species with slow wood decomposition rates showed significant negative effects of bark-removal, but there was no significant effect in the other two species. Future research should also separately examine bark and wood decomposition, and consider bark-removal experiments to better understand roles of bark in wood decomposition.

Ecosystem processes depend in part on decomposition of organic matter. Globally, litter and soil decomposition produces more CO₂ than fossil-fuel combustion¹. It is also the most important pathway for returning nutrients to soils for plant uptake. Many studies focus on factors affecting decomposition of plant parts including leaves, wood and roots. However, bark decomposition has received comparatively little attention². Nonetheless, bark decomposition is interesting because: (i) bark can comprise up to 20% of the dry mass of tree stems, (ii) bark forms a substantial component of litter in some forests; some species (*e.g.*, *Eucalyptus*) shed bark as they grow, and in harvesting wood, logs are often stripped of their bark in the field, and (iii) bark can potentially affect the rate of wood decomposition through altering decomposer access³, and the microclimate and chemical conditions within decaying logs. The importance of bark for wood decomposition is implicit in the fact that log decay classes are based on the presence or absence of bark⁴.

Most existing studies on bark decomposition have been done in European boreal or North American temperate forests, with to our knowledge only one recent study in the tropics⁵, although bark is much more variable in the tropics⁶. Some studies have indirectly examined decomposition of bark while still attached to wood^{7–11} or stumps¹⁰. Others tested the efficacy of microorganisms in decomposing bark (*e.g.*, white rot fungi^{12,13}, soil fungi^{14,15}, or bacteria¹⁶) or investigated the role of the physical structure of bark by grinding it to powder^{14,17}. The scarcity of studies on bark decomposition, especially in the tropics, is due in part to the fact that it is often considered an integral part of wood, although it has very different physical and chemical properties. Different

¹Key Laboratory of Tropical Forest Ecology, Xishuangbanna Tropical Botanical Garden, Chinese Academy of Sciences, Menglun, Mengla 666303, Yunnan, China. ²Centre for Mountain Ecosystem Studies, Kunming Institute of Botany, Kunming 650201, Yunnan, China. ³University of Chinese Academy of Sciences, Beijing 100039, China. ⁴Ecophysiology and Evolution Group, State Key Laboratory for Conservation and Utilization of Subtropical Agro-Bioresources, and College of Forestry, Guangxi University, Nanning, Guangxi Province, 530004, China. ⁵World Agroforestry Centre, East & Central Asia Regional Office, Kunming 650201, Yunnan, China. Correspondence and requests for materials should be addressed to R.D.H. (email: r.harrison@cgiar.org)

Species	Type of tissue	C (%)	N (%)	P (%)	K (%)	Sugar (%)	Lignin (%)	Hemicellulose (%)	Cellulose (%)	Tannins (%)	Fiber content (%)	Wood specific gravity
<i>Cunninghamia lanceolata</i>	Bark	49.7	0.703	0.087	0.377	1.03	42.9	6.36	20.17	1.40	NA	NA
	Wood	51.1	0.177	0.015	0.093	0.39	34.19	10.73	40.45	NA	69.32	0.805 (0.011)
<i>Tectona grandis</i>	Bark	44.1	0.418	0.021	0.131	3.99	20.47	21.26	36.52	0.44	NA	NA
	Wood	48.7	0.337	0.023	0.156	1.17	26.39	12.17	49	NA	65.66	0.649 (0.007)
<i>Dipterocarpus turbinatus</i>	Bark	45.3	0.491	0.016	0.146	1.03	33.76	10.38	35	2.21	NA	NA
	Wood	48.1	0.334	0.012	0.163	0.67	32.19	15.38	43.29	NA	69.56	0.850 (0.010)
<i>Toona ciliata</i>	Bark	45.0	0.857	0.096	0.473	3.90	22.36	11.88	30.18	7.26	NA	NA
	Wood	47.1	0.286	0.043	0.222	0.67	20.75	16.43	54.86	NA	67.2	0.698 (0.006)
<i>Kleinhovia hospita</i>	Bark	44.5	1.138	0.149	1.238	0.34	20.5	11.31	49.36	0.33	NA	NA
	Wood	47.6	0.62	0.106	0.758	0.78	34.1	10.67	44.99	NA	71.28	0.429 (0.004)

Table 1. Initial concentrations of chemical components in the bark and wood among the five tree species used in the decomposition experiment. Values are laboratory duplicate averages; except for wood specific gravity which is the mean (\pm SE) of 24 samples.

authors have suggested that the presence or absence of bark may inhibit or enhance the decomposition of dead wood, but few studies have tested these ideas. For example, the bark of some species contains compounds that are known to inhibit microorganisms (e.g., *Tectona grandis* bark¹⁸). Physiological and mechanical functions of bark have been investigated in living trees and several distinct functions, including defense against pests and herbivores, reduction of desiccation, protection against fire, control in trunk girth seasonal changes, mechanical support, storage, and photosynthesis, have been attributed to bark^{6,19–23}. However, to what extent these functions, especially the defensive ones, are still important after tree death remains poorly understood². For example, a recent article highlights the potential role of bark traits in influencing faunal assemblages during the early stages of wood decomposition³. Arthropods or invertebrate fauna in general are recognized to influence organic matter decomposition not only directly through the amount of matter consumed (mainly by termites in tropical and subtropical environments) but also through indirect effects such as grazing on fungi sporocarps⁵.

Bark is the outer layer beyond the living cambium, which often has corky structure and is composed of dead cells²⁴. It can represent up to 20% of the dry weight of the tree stem¹³. Bark and wood differ markedly in chemical composition and structure. Bark is mostly suberin. Among the functions attributed to suberin are desiccation reduction and inhibition of attack from microorganisms²⁵. Bark also contains higher nutrient concentrations and C than wood^{19,26,27}. Since chemical composition of litter is the most important factor after climate in determining decomposition rates²⁸, one may anticipate that bark and wood will differ substantially in their decomposition rates. Indeed, some studies have already shown that nutrient dynamics during decomposition differ between bark and wood¹¹. A recent study also showed that lignin and polyesters such as cutin and suberin responded differently to temperature in a warming experiment²⁹. In addition, for logs there is a substrate size – decomposition rate relationship³⁰, whereby larger logs decompose more slowly. This relationship may in part be linked to bark effects on decomposition rates, because smaller logs have a larger proportional surface area and hence a higher proportion of bark. Thus, coupling bark decomposition studies with additional experiments investigating the decomposition of logs with and without bark is likely to enhance our understanding of the mechanisms affecting wood decomposition.

We therefore investigated factors affecting bark decomposition and the effects of bark on wood decomposition for five important tree species in a secondary seasonal tropical rain forest in Xishuangbanna, SW China. We employed a common litter-bed approach to minimize environmental variation and thus better understand the effects of species traits on bark decomposition. We examined the following hypotheses: (i) Bark contains higher C and N than wood among the study species, (ii) bark decomposition rates decline across species as the proportions of lignin, cellulose and tannins in bark tissue increase; (iii) meso- and macro-fauna promote bark decomposition, both through enhancing microbial decomposition and fragmentation of bark; and (iv) logs retaining bark decompose faster than logs without bark, and this effect decreases with bark decomposability.

Results

Initial characteristics of bark litter and branches. When bark and wood chemistries are compared, in four of the five species (the exception being *Kleinhovia hospita*) wood tissue contained more carbon and cellulose but less N and P than bark tissue (Table 1). *Kleinhovia hospita* had substantially the highest N, P and cellulose contents in both bark and wood, and the wood of *Kleinhovia hospita* contained less cellulose and water-soluble sugar than bark. The patterns for lignin, hemicellulose and K were mixed (Table 1). The tannin content of bark tissue increased in the following order: *Kleinhovia hospita* << *Tectona grandis* < *Cunninghamia lanceolata* < *Dipterocarpus turbinatus* < *Toona ciliata*. Meanwhile, wood specific gravity increased in the following order: *Kleinhovia hospita* < *Tectona grandis* < *Toona ciliata* < *Cunninghamia lanceolata* < *Dipterocarpus turbinatus* (Table 1).

Nutrient dynamics in bark litter during decomposition. Regardless of the species and litter-bag treatment, sugar, cellulose and carbon concentrations in bark litter decreased between the initial (0 month) and final

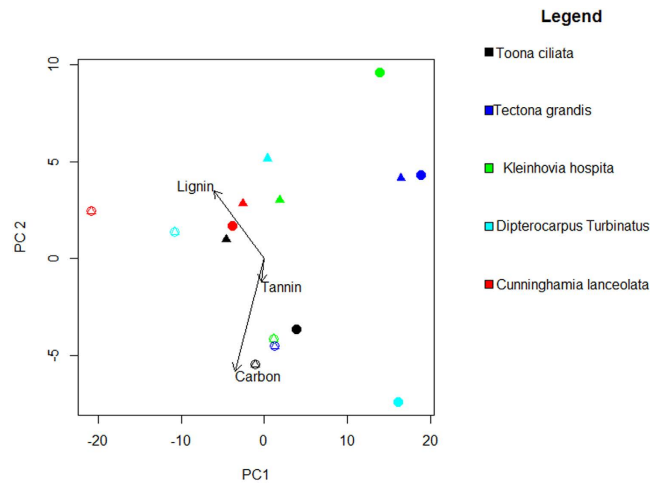


Figure 1. Principal components analysis (PCA) of bark litter from litter-bags at the start (0 mo, open symbols) and end (12 mo, filled) of incubation in a common litter-bed in a secondary rain forest at Xishuangbanna Tropical Botanical Garden for five tree species (*Kleinhovia hospita*, *Tectona grandis*, *Cunninghamia lanceolata*, *Dipterocarpus turbinatus*, and *Toona ciliata*) with respect to faunal exclusion (triangles; fine mesh = 0.068 mm) and faunal access (circles; coarse mesh = 4.75 mm upper side). Values are laboratory duplicate averages. For 12 mo samples, due to the amount of remaining bark, only two samples ($n = 2$) per bag type and species were obtained for analysis. For details of changes in the concentrations of specific bark substances through time please refer to Fig. S1.

samples (after 12 months of incubation), whereas nitrogen concentrations increased (Fig. 1, Fig. S1). For other nutrients, no general trends were found. The first two axes of a principal component analysis (PCA) explained 96% of the variation in bark chemistry among species and samples taken at both the start and end of the experiment (PCA1, 82.01% and PCA2, 14.33%). C, N, lignin and tannin were important in explaining the variation bark litter chemistry (Fig. 1). The PCA reveals a strong species effect in the change in bark chemistry through decomposition, but the mesh size effect was species dependent. There were large differences in nutrient concentrations between bark litter remaining at the end of the experiment in coarse mesh and fine mesh bags for three species, but not for *Tectona grandis* and *Cunninghamia lanceolata*.

Bark litter decomposition. The optimal model for bark litter decomposition retained number of days (polynomial 2nd degree), species, litter-bag type and all two-way interactions as independent variables. To correct for heteroscedasticity, the exponential function (varExp (form = ~fitted(.)) was used. After 1 yr incubation, bark litter mass loss ranged from $96.45 \pm 0.54\%$ (mean \pm standard error, $N = 5$) for *Dipterocarpus turbinatus* to $58.49 \pm 4.15\%$ for *Toona ciliata* in coarse mesh bags and from $81.96 \pm 4.39\%$ for *Kleinhovia hospita* to $43.78 \pm 2.63\%$ for *Cunninghamia lanceolata* in fine mesh bags (Fig. 2). Across all species, bark litter in coarse-mesh bags had higher mass loss than in fine-mesh litter-bags (Table 2). The variance in decomposition rates was much higher for coarse mesh bags than for fine mesh bags. There was a strongly significant species effect (Table 2 and Table S1), a significant mesh size:time interaction (Table 2), and a significant species:time interaction (Table 2). All species had rapid decomposition over the first six months, which was during the wet season. However, *Kleinhovia hospita* decomposed more rapidly over the first three months, compared to other species. Post-hoc pairwise tests for bark decomposition among species revealed three significantly distinct groupings irrespective of litter-bag treatments; decomposition rates increased in the following order: (i) *Cunninghamia lanceolata* and *Toona ciliata* (ii) *Tectona grandis*, and (iii) *Kleinhovia hospita*. *Dipterocarpus turbinatus* could not be distinguished from groups (i) and (ii) (Table S2).

Log decomposition. The optimal model of branch mass loss over two years retained number of days (polynomial 2nd degree), species, bark-removal treatment and all two-way interactions as independent variables. To correct for heteroscedasticity, we employed the variance identity (varIdent) function to permit variances among both species and bark treatment to vary. We found that main effect of bark removal was not significant (Table 3, Fig. 3, Table S3). However, there was a significant bark-treatment:species interaction. Logs with bark decomposed faster than those without for *Toona ciliata* (1.33 fold increase), *Cunninghamia lanceolata* (1.46 fold increase) and *Tectona grandis* (1.92 fold increase), but not for *Kleinhovia hospita* and *Dipterocarpus turbinatus* (Fig. 3). As expected, there was also a strong species effect on the rate of branch decomposition and also a significant species:time interaction (Table 3). The species with the fastest decomposition rate was *Kleinhovia hospita*. Regardless of the treatment, *Kleinhovia hospita* completely decomposed within 12 mo. The slowest to decompose was *Tectona grandis* ($53.1 \pm 5.5\%$ for branches with bark and $27.6 \pm 25.70\%$ for branches without bark over 24 mo). Post-hoc pairwise tests for decomposition of branches with bark among species revealed three distinct groupings. Decomposition rates increased in the following order: (i) *Tectona grandis* and *Cunninghamia lanceolata*, (ii) *Toona ciliata* and *Dipterocarpus turbinatus*, and (iii) *Kleinhovia hospita*. For branches without bark

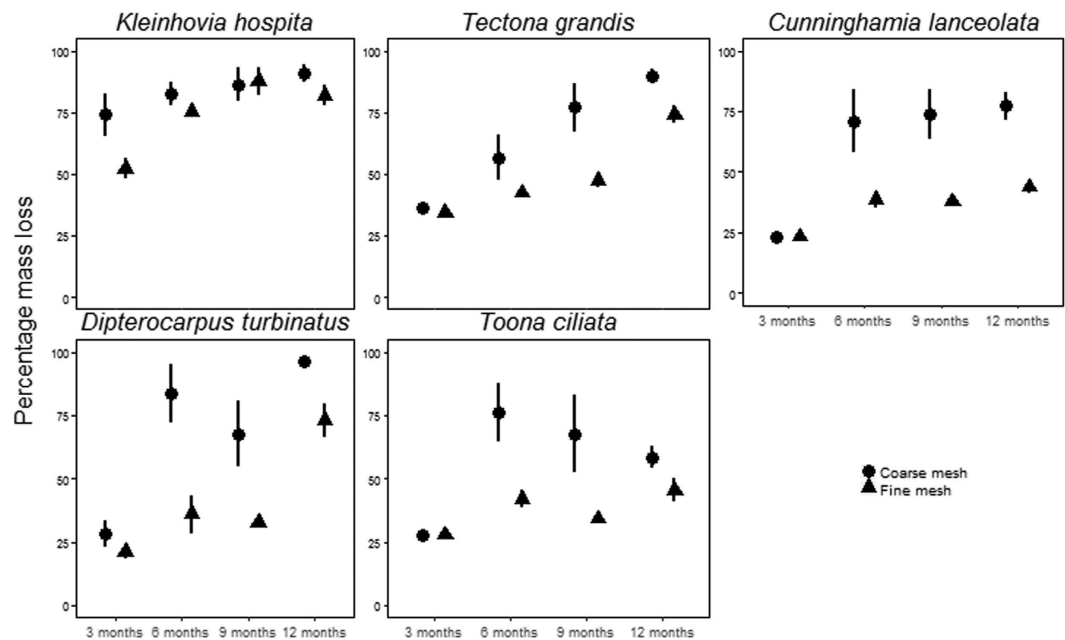


Figure 2. Percent mass loss of bark litter from litter bags after 3 mo, 6 mo, 9 mo and 12 mo incubation in a common litter-bed in a secondary rain forest at Xishuangbanna Tropical Botanical Garden for five tree species (*Kleinhovia hospita*, *Tectona grandis*, *Cunninghamia lanceolata*, *Dipterocarpus turbinatus*, and *Toona ciliata*) with respect to faunal exclusion (fine mesh, mesh size = 0.068 mm) and faunal access (coarse mesh, mesh size = 4.75 mm upper side). Five litter bags per treatment were harvested at 3 mo, 6 mo and 12 mo and 3 bags were harvested at 9 mo. Data represent means \pm SE.

Variables	Numerator DF	F-values	P-value
Intercept	1	8.682	<0.0037
Number of days incubation	2	16.664	<0.0001
Litter-bag type	1	28.137	<0.0001
Species	4	3.334	<0.0120
Polynomial (number of days, 2): Species	8	3.239	0.002
Polynomial (number of days, 2): Litter bag type	2	27.520	<0.0001

Table 2. Model results for bark litter decomposition. Percentage mass loss (logit transformed) was modelled over 12 months incubation as function of number of days (2nd order polynomial), litter-bag type (faunal access/exclusion), barks species and their interactive effects (for the full model and summary see Table S1 in supplementary material). There were five species: *Kleinhovia hospita*, *Tectona grandis*, *Cunninghamia lanceolata*, *Dipterocarpus turbinatus*, *Toona ciliata*. DF denotes degree of freedom. Denominator DF = 148.

four distinct groups were found. Decomposition rates increased in the following order (i) *Tectona grandis*, and *Cunninghamia lanceolata*, (ii) *Toona ciliata*, (iii) *Dipterocarpus turbinatus*, and (iv) *Kleinhovia hospita* (Table S4).

Discussion

This experiment examined the decomposition of both bark litter and branches of five important tropical tree species, using a common litter-bed approach. Previous studies have revealed that climate^{28,31}, litter substrate quality²⁸ and decomposer community composition^{32,33} are principal drivers of variance in decomposition rates. Through using a common litter bed approach we controlled for environmental effects, including climate and decomposer community composition.

For bark litter, we found that litter in mesh bags that permitted meso- and macro-faunal access (*i.e.* coarse mesh) decomposed faster, regardless of wood species. There was also substantial variation in bark decomposition rates among species. *Kleinhovia hospita* with substantially lower bark tannin content decomposed fastest, especially in fine-mesh bags. However, contrary to our hypothesis differences in decomposition rates among the other four species did not follow variation in tannin content. For bark litter in coarse-mesh bags, there was very high within-species variance in decomposition rates particularly after 6 mo, which appeared to reflect termite activity. For wood decomposition, as predicted branches with bark decomposed faster than without bark in three species and in the remaining two species there were no significant effects of bark removal. The species with significant bark removal effects had the slowest decomposing wood.

Variables	Numerator DF	F-values	P-value
Intercept	1	0.402	0.527
Number of days incubation	2	13.053	<0.0001
Species	4	3.670	<0.008
Bark treatment	1	1.594	0.210
Species: Bark treatment	4	3.823	0.006
Polynomial (number of days, 2): Species	8	5.636	<0.0001

Table 3. Model results for decomposition (mass loss) of branches. Percentage mass loss (logit transformed) was modelled over 24 months as function of number of days (2nd order polynomial), bark treatment, species and all two-way interactions (for the full model and summary see Table S3 in supplementary material). There were five species: *Kleinhovia hospita*, *Tectona grandis*, *Cunninghamia lanceolata*, *Dipterocarpus turbinatus*, *Toona ciliata*, and bark treatment had two levels: branches with bark and branches without bark. DF denotes degree of freedom. Denominator DF = 98.

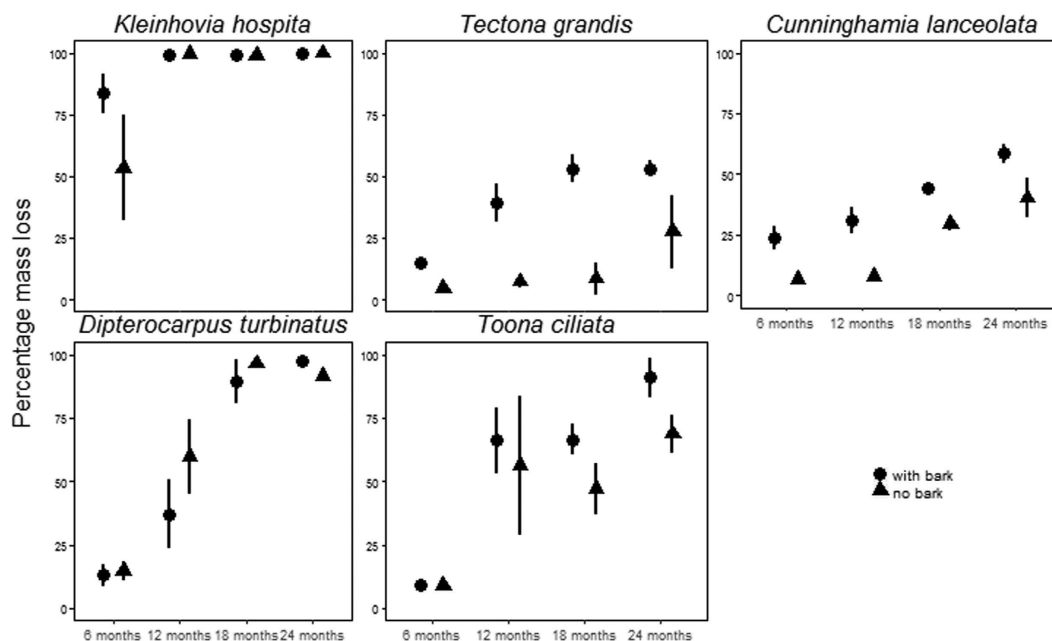


Figure 3. Percent mass loss of branches after 6 mo, 12 mo, 18 mo and 24 mo incubation in a common litter bed in a secondary rain forest at Xishuangbanna Tropical Botanical Garden for five tree species (*Kleinhovia hospita*, *Tectona grandis*, *Cunninghamia lanceolata*, *Dipterocarpus turbinatus*, and *Toona ciliata*) with respect to bark removal treatment (bark intact vs bark removed). Three branches were collected every six months. Data represent means \pm SE.

Our study is the first to have examined differences in chemistry between bark and wood in tropical tree species. Among temperate species, Harmon *et al.*³⁴ and Martin *et al.*²⁷ found C content to be higher in bark than wood. In our study, we found the opposite. Likewise, for N content, Martin *et al.*²⁷ reported higher concentrations in bark than in wood, which was opposite to the pattern in our study. These differences between our results and those reported previously from temperate species may simply reflect the small number of species examined. However, if the results do reflect differences in tissue-construction strategy between tropical and temperate species, it would suggest a wider sampling of tree species would be rewarding.

The relative increase in the concentration of N through decomposition is perhaps surprising, but can possibly be explained by the high N content of tannins and other secondary metabolites that are resistant to decomposition. The two species for which mesh size did not have any effect on the changes in relative nutrient concentrations were the two species with the most recalcitrant bark litter.

Bark litter in coarse-mesh decomposed faster (1.11–1.76 fold increase) than in fine-mesh bags across all species, indicating an important effect of litter meso and macro invertebrates on decomposition of bark in this environment. In a recent review, Ulyshen³⁵ found that arthropods are capable of consuming up to 20% of decomposing wood litter. Colonisation by invertebrates is also likely to facilitate microbial decomposition through the increase in substrate surface area resulting from fragmentation and microbial inoculation. High within-species variation in decomposition rates of bark in coarse-mesh bags could be explained by differences in arthropod colonization patterns, most likely termites. Other bark factors, such as water-holding capacity^{5,36}, toughness

and surface structure of bark tissue, may together affect the attractiveness of bark litter to litter fauna and the rate of microbial decomposition. However, in our experiment there was no significant interactive effect between tree species and mesh size, indicating that specific characteristics of the litter did not alter effects of meso- and macro-faunal access. Nevertheless, there was a strong direct effect of species on bark litter decomposition rates. Recent findings from Zuo *et al.*³ highlight that for the early stages of decomposition, bark traits potentially determine the faunal assemblage on logs, which perhaps could explain part of the variation in wood decomposition earlier explained by species identity. Litter quality has long been identified as key controlling factor for the decomposition of organic matter³⁷. Decomposition by fungi is generally limited by N availability³⁷, which may explain why the bark of *Kleinhovia hospita*, with the highest initial N content, decomposed most rapidly in fine-mesh bags. *Kleinhovia hospita* bark also had the highest cellulose to lignin ratio and microorganisms tend to perform well in presence of high cellulose to lignin ratios³⁰. Conversely, the low cellulose to lignin ratio in the bark of *Cunninghamia lanceolata* may explain why it had the slowest decomposition rate in fine-mesh bags. Moreover, *C. lanceolata* is a gymnosperm and as Weedon *et al.*³⁷ and Cornwell *et al.*²⁸ point out, gymnosperms usually contain lignin made from guaiacyl, which is a highly resistant compound.

As expected, in three species branches with bark decomposed faster than branches without bark. In the other two species bark removal did not have any significant effect. Recently Johnson *et al.*¹¹ suggested that variation among species in rates of wood decomposition may be a consequence of differences in bark mineralization. Bark may have a moisture-retention function in woody debris due to the presence of suberin in bark, thereby enhancing microbial decomposition through providing a favorable micro-environment. Ulyshen *et al.*⁵, who studied bark removal in a single species (*Liquidambar styraciflua* L.) also found the presence of bark enhanced wood decomposition rates. Bark may also alter overall substrate quality. It is noteworthy that in our experiment the effect of bark removal was significant in the three species with the slowest decomposing branches: *Tectona grandis*, *Cunninghamia lanceolata* and *Toona ciliata*. Perhaps, for these species, chemical constituents released from the decomposition of bark tissue facilitate the decomposition of wood, which is otherwise highly recalcitrant.

As expected, we found a significant effect of species on the rate of decomposition of branches. *Kleinhovia hospita*, whose branches were the fastest to decompose regardless of bark treatment, had the lowest wood specific gravity, highest concentration of N, P, and K, and lowest carbon to nitrogen ratio, while its bark had the lowest tannin content and highest cellulose to lignin ratio. *Cunninghamia lanceolata* branches with and without bark were the second slowest to decompose, which may be explained by the slow colonization and establishment of fungi on gymnosperms as compared to angiosperms^{28,38}. We found a significant species:time interaction in the decomposition of branches, with the slower decomposing species evidencing slower initial decomposition (Fig. 3). These results corroborate those recently reported by Schilling *et al.*³⁹ who tracked the decomposition of eight woody species in a tropical dry forest. Moreover, previous studies recognized *Cunninghamia lanceolata* as a highly decay-resistant species and especially resistant to fungal attack⁴⁰, perhaps because of the high lignin content of its bark and wood and also because its heartwood contains antifungal properties⁴¹. Branches of *Tectona grandis* were the slowest to decompose likely because as reported by several studies this species both wood and bark contain some antifungal properties^{42–44}. Our *Tectona grandis* branches with bark decomposed faster than those without bark. Previous research also found that the decay resistance of *Tectona grandis* wood increased with the depth (*i.e.* sapwood decompose faster than heartwood which was correlated with the concentration of antifungal extracts⁴²). Moreover, *Tectona grandis* wood itself is also well recognised for its resistance to termite attack⁴⁵.

In this study we did not investigate the effect of bark removal with respect to log diameter, which is likely to be important²¹. In addition to surface area:volume effects, the thickness, physical structure and chemical composition of bark may vary among woody tissues of different size, although Rosell *et al.*²⁴ recently showed that bark from branches and twigs was representative of bark on the trunk among 85 species of angiosperms. Our chemical analyses also did not include important (but difficult to measure) bark components, such as lignin monomers or suberin. Improved understanding of the distribution and role of these substances in decomposition may be important to understanding bark decomposition and its role in the decomposition of wood. In addition to repeating our experiments across an expanded sample of species, a comprehensive survey of functional relationships among bark and wood characteristics, and their evolutionary and ecological patterns would be very informative.

In summary, organic matter decomposition, carbon and nutrient cycling are important topics for ecological study. However, recently, the need to further parameterize and provide better mechanistic understanding of decomposition processes, has resulted in calls for more tissue specific approaches. Until recently, researchers have usually regarded wood and bark as a single substrate. Indeed, assignment of wood decay classes has relied mostly on the status of bark (presence/absence, state of decomposition). Here, we investigated bark and wood decomposition in five tropical tree species. We found that species traits and litter fauna access had important effects on bark litter decomposition. Through a bark removal experiment, we also found that bark enhanced the rate of wood decomposition in some species, but had no effect in others. Species with a significant bark removal effect were those with the slowest rates of wood decomposition.

Materials and Methods

This study was conducted in a secondary rainforest (UTM 47Q, 0734280 E, 2425546 N, 589 m als.) at Xishuangbanna Tropical Botanical Garden (XTBG), a seasonal moist tropical forest. Total annual rainfall is 1463 mm but rainfall is highly seasonal with 87% of total precipitation falling between May and Oct⁴⁶. However, fog during the cool dry season (Nov–Mar) reduces plant water deficits, permitting tropical rain forest to persist⁴⁶. Monthly mean temperature varies from 15.9 °C in Jan to 25.7 °C in June⁴⁷.

We conducted an experiment using litter bags to assess bark decomposition over 1 yr from May 9th 2014 to May 9th 2015. In addition, we monitored the decomposition of 5-cm diameter branches with and without bark over 2 yrs from Nov. 23rd 2013 to Nov. 4th 2015.

Species selection. We selected tree species which met at least two of the following criteria: (i) important timber producing tree species for the Asian timber-trade market, (ii) species that are ecologically important in Asian tropical forests and (iii) tree species used extensively for reforestation or in silvicultural plantations in Asia. Species were also selected to represent a range of wood densities and supposed decay resistance. Finally, the species also all had to be present at XTBG, so that their wood was available. In total, five species; *Kleinhovia hospita* L. (Malvaceae), *Tectona grandis* L.f. (Lamiaceae), *Cunninghamia lanceolata* Hook. (Cupressaceae), *Dipterocarpus turbinatus* C.F. Gaertn. (Dipterocarpaceae), and *Toona ciliata* M. Roem. (Meliaceae) were selected.

Bark collection and preparation. Bark was removed from ~5 cm diameter branches of these tree species. Branches were from one tree for *Cunninghamia lanceolata*, *Toona ciliata*, and *Tectona grandis*, two trees for *Kleinhovia hospita* and from three trees for *Dipterocarpus turbinatus*. The number of trees used was determined by the amount of material produced during the regular pruning operations of the horticultural department at XTBG. The removed bark material was cut into pieces of ca. 1 cm × 5 cm. This was to ensure that bark from different species was presented in more or less same physical shape and also so that it could be fitted into the litter-bags. The collected bark litter was then dried at 80 °C for 24 hrs, frozen at –80 °C for 24 hrs and dried again at 80 °C for 24 hrs to defaunate it^{48,49}.

Litter-bags. To study effects of fauna on the decomposition of bark, we used two types of litter-bags. Coarse mesh (mesh size 4.75 mm for upper side, and mesh size 0.5 mm lower side to reduce loss of small particles from fragmentation) bags allow litter fauna access to the bark litter. Our fine mesh (mesh size 0.068 mm) bags excluded all arthropods and mesofauna³². Litter-bags were incubated within a 3.6 m × 2.4 m common litter-bed. At 3-mo intervals we harvested litter-bags. Five replicates were harvested at 3, 6 and 12 mo after incubation, and three replicates were harvested at 9 mo.

Each litter-bag was initially filled with 20 g of dry bark litter. Upon collection, each litter-bag was checked visually for termites and then the remaining material in each bag was carefully and gently cleaned with tap water before oven drying at 105 °C to constant mass. Any fine mesh bags with evidence of termite holes were rejected, as in addition to termites access by other meso- and macrofauna may have occurred. Coarse-mesh bags attacked by termites were retained for analysis. The remaining bark litter dry mass was measured to 0.01 g using an electronic balance.

Branches collection, preparation, incubation and harvest. Fresh branches were cut from the target species while the garden's horticultural staff were conducting routine pruning operations. Branches were transported to the laboratory, where an electric saw was used to cut branches into pieces of ~0.5 m length. The saw was sterilized with ethanol and flamed between cuts to minimise transfer of microbes, in particular fungi, between samples. Branches with irregular shapes were not used. Each branch was tagged with a uniquely numbered metal tag and both ends were coated with black enamel paint to reduce arthropod colonization into cuts⁵⁰. We recorded the (i) diameter (at both ends and in the middle) as measured using a diameter tape, (ii) bark thickness measured at both ends with a digital caliper, (iii) fresh weight of the entire log, and (iv) the total length. For branches with bark removed, these metrics were recorded before and after bark removal. Disks taken at the base of each branch prior to preparation were stored at –20 °C until chemical analyses.

Three replicates of each species per treatment (with/without bark) were collected at 6, 12, 18 and 24 mo after incubation. If branches became fragmented, we carefully collected each fragment that was visible to naked eye using forceps. After harvesting, we recorded the presence/absence of termites and then mud, sand, insect frass and mosses were carefully brushed off the branch. The fresh weight of each branch was measured to 0.01 g using an electronic balance. Next, three disks of 2 cm thickness were cut from the middle of the branch and approximately 5 cm from each end (to avoid end effects) (Fig. S2). For branches that were fragmented, we used several pieces instead of three disks. Each disk was weighed before and after drying at 105 °C to constant mass. The dry volume of each disk was measured using the water displacement method⁵¹. To calculate wood specific gravity (WSG) of a sample we used the mean derived from the three disks (or pieces). Using the final fresh mass and water content we calculated the final dry mass, which enabled us to derive the mass loss from the initial dimensional measurements and initial WSG.

Chemical analysis. We assessed initial chemical properties of the wood and bark. Disks samples stored at –20 °C were dried and ground to a powder for chemical analysis. Bark and wood were analysed separately. In addition, final chemical properties of remaining bark were also determined. The total carbon (C), nitrogen (N), phosphorus (P), potassium (K), water soluble sugar content, neutral detergent fiber (NDF), acid detergent fiber (ADF), and acid detergent lignin (ADL) were measured for both bark litter and wood. In addition, tannin content was measured for bark and fiber content was measured for wood. C and N were determined by Vario Max CN element analyzer (Elementar Analysensysteme, Germany). For P, and K measurements, samples were diluted with HCl and digested with HNO₃-HClO₄. These were measured with an inductively coupled plasma atomic emission spectrometer (iCAP 6300, IRIS Advantage, E R, Thermo Fisher Scientific, USA). Water-soluble sugars were analysed with Analyzer 3 (SEAL Analytical GmbH, Germany). Tannin content was measured with UV-visible spectrometer (UV 2450, SHIMADZU, Japan). NDF, ADF, ADL, fiber contents were determined using FibertecTM 2010 (FOSS Analytical AB, Sweden). ADL, NDF and ADF were later converted to lignin, hemicellulose and cellulose following equations in Chen *et al.*⁵².

Data analysis. We assessed the decomposition of both bark litter and branches through the loss of dry mass over time. We modeled the percentage of mass loss of bark litter (logit transformed following⁵³ over 12 months as function of number of days incubation, species, treatment (litter-bag type) and all two-way interactions. We modeled the percentage mass loss from wood branches over 24 months as function of number of days incubation, species and bark treatment (with/without bark) and all two-way interactions.

We used Akaike information criteria (AIC) to select optimal models, the function ANOVA to examine effect of each independent variable. All the analyses were performed in R version 3.3.1 (R Foundation for Statistical Computing⁵⁴) and the nlme package⁵⁵, using the modeling function *gls* (*generalized least squared*). Where differences among species were significant, we conducted post-hoc multiple comparison pairwise tests using the functions *cld* and *lsmeans* from the *lsmeans* package⁵⁶. Model fit was investigated by plotting residuals against standardised effect sizes.

References

- Couteaux, M. M., Bottner, P. & Berg, B. Litter decomposition climate and litter quality. *Trends Ecol. Evol.* **10**, 63–66 (1995).
- Shorohova, E. & Kapitsa, E. Mineralization and fragmentation rates of bark attached to logs in a northern boreal forest. *For. Ecol. Manage.* **315**, 185–190 (2014).
- Zuo, J. *et al.* Faunal community consequence of interspecific bark trait dissimilarity in early-stage decomposing logs. *Funct. Ecol.* doi: 10.1111/1365-2435.12676 (2016).
- Pyle, C. & Brown, M. M. A rapid system of decay classification for hardwood logs of the eastern deciduous forest floor. *J. Torrey Bot. Soc.* **125**, 237–245 (1998).
- Ulyshen, M. D., Müller, J. & Seibold, S. Bark coverage and insects influence wood decomposition: Direct and indirect effects. *Appl. Soil Ecol.* **105**, 25–30 (2016).
- Paine, C. E. T. *et al.* Functional explanations for variation in bark thickness in tropical rain forest trees. *Funct. Ecol.* **24**, 1202–1210 (2010).
- Abbott, D. T. & Crossley, J. D. A. Woody litter decomposition following clear-cutting. *Ecology* **63**, 35–42 (1982).
- McCull, J. G. & Powers, R. F. Decomposition of small woody debris of California red Fir: Mass loss and elemental content over 17 years. *Soil Sci. Soc. Am. J.* **67**, 1227–1233 (2003).
- Ganjegunte, G. K., Condrón, L. M., Clinton, P. W., Davis, M. R. & Mahieu, N. Decomposition and nutrient release from radiata pine (*Pinus radiata*) coarse woody debris. *For. Ecol. Manage.* **187**, 197–211 (2004).
- Shorohova, E. *et al.* Stump decomposition rates after clear-felling with and without prescribed burning in southern and northern boreal forests in Finland. *For. Ecol. Manage.* **263**, 74–84 (2012).
- Johnson, C. E., Siccama, T. G., Denny, E. G., Koppers, M. M. & Vogt, D. J. *In situ* decomposition of northern hardwood tree boles: decay rates and nutrient dynamics in wood and bark. *Can. J. For. Res.* **44**, 1515–1524 (2014).
- Parameswaran, N., Wilhelm, G. E. & Liese, W. Ultrastructural aspects of beech bark degradation by fungi. *Eur. J. For. Pathol.* **6**, 274–286 (1976).
- Vane, C., Drage, T. & Snape, C. Bark decay by the white-rot fungus *Lenzula edodes*: Polysaccharide loss, lignin resistance and the unmasking of suberin. *Int. Biodeterior. Biodegradation* **57**, 14–23 (2006).
- Allison, F. E. & Murphy, R. M. Comparative rates of decomposition in soil of wood and bark particles of several hardwood species. *Soil Sci. Soc. Proc.* **27**, 463–466 (1962).
- Kuhlman, E. G. Decomposition of loblolly pine bark by soil- and root-inhabiting fungi. *Can. J. Bot.* **48**, 1787–1793 (1970).
- Deschamps, A. M. Nutritional capacities of bark and wood decaying bacteria with particular emphasis on condensed tannin degrading strains. *Eur. J. For. Pathol.* **12**, 252–257 (1982).
- Allison, F. E. & Klein, C. J. Comparative rates of decomposition in soil of wood and bark particles of several softwood species. *Soil Sci. Soc. Proc.* 193–196 (1961).
- Neamatallah, A., Yan, L., Dewar, S. J. & Austin, B. An extract from teak (*Tectona grandis*) bark inhibited *Listeria monocytogenes* and methicillin resistant *Staphylococcus aureus*. *Let. Appl. Microbiol.* **41**, 94–96 (2005).
- Franceschi, V. R., Krokene, P., Christiansen, E. & Kreckling, T. Anatomical and chemical defenses of conifer bark against bark beetles and other pests. *New Phytol.* **167**, 353–376 (2005).
- Stahl, C. *et al.* Seasonal variation in atmospheric relative humidity contributes to explaining seasonal variation in trunk circumference of tropical rain-forest trees in French Guiana. *J. Trop. Ecol.* **26**, 393–405 (2010).
- Lawes, M. J., Midgley, J. J. & Clarke, P. J. Costs and benefits of relative bark thickness in relation to fire damage: a savanna/forest contrast. *J. Ecol.* **101**, 517–524 (2013).
- Wagner, F. *et al.* Are commonly measured functional traits involved in tropical tree responses to climate? *Int. J. Ecol.* **2014**, 1–10 (2014).
- Rosell, J. A. Bark thickness across the angiosperms: More than just fire. *New Phytol.* doi: 10.1111/nph.13889 (2016).
- Rosell, J. A., Castorena, M., Laws, C. A. & Westoby, M. Bark ecology of twigs vs. main stems: functional traits across eighty-five species of angiosperms. *Oecologia* **178**, 1033–1043 (2015).
- Kolattukudy, P. E. Biochemistry and function of cutin and suberin. *Can. J. Bot.* **62**, 2918–2933 (1984).
- Wetzel, S. & Greenwood, J. S. Proteins as a potential nitrogen storage compound in bark and leaves of several softwoods. *Trees* **3**, 149–153 (1989).
- Martin, A. R., Gezahegn, S. & Thomas, S. C. Variation in carbon and nitrogen concentration among major woody tissue types in temperate trees. *Can. J. For. Res.* **45**, 744–757 (2015).
- Cornwell, W. K. *et al.* Plant traits and wood fates across the globe: rotted, burned, or consumed? *Glob. Chang. Biol.* **15**, 2431–2449 (2009).
- Feng, X., Simpson, A. J., Wilson, K. P., Dudley Williams, D. & Simpson, M. J. Increased cuticular carbon sequestration and lignin oxidation in response to soil warming. *Nat. Geosci.* **1**, 836–839 (2008).
- van Geffen, K. G., Poorter, L., Sass-Klaassen, U., van Logtestijn, R. S. P. & Cornelissen, J. H. C. The trait contribution to wood decomposition rates of 15 Neotropical tree species. *Ecology* **91**, 3686–3697 (2010).
- Bradford, M. A. *et al.* Climate fails to predict wood decomposition at regional scales. *Nat. Clim. Chang.* **4**, 625–630 (2014).
- Swift, M. J., Heal, O. W. & Anderson, J. M. *Decomposition in Terrestrial Ecosystems*. (University of California Press, 1979).
- Handa, I. T. *et al.* Consequences of biodiversity loss for litter decomposition across biomes. *Nature* **509**, 218–221 (2014).
- Harmon, M. E., Fasth, B., Woodall, C. W. & Sexton, J. Carbon concentration of standing and downed woody detritus: Effects of tree taxa, decay class, position, and tissue type. *For. Ecol. Manage.* **291**, 259–267 (2013).
- Ulyshen, M. D. Wood decomposition as influenced by invertebrates. *Biol. Rev. Camb. Philos. Soc.* **91**, 70–85 (2016).
- Rosell, J. a. & Olson M. E. The evolution of bark mechanics and storage across habitats in a clade of tropical trees. *Am. J. Bot.* **101**, 764–777 (2014).
- Weedon, J. T. *et al.* Global meta-analysis of wood decomposition rates: a role for trait variation among tree species? *Ecol. Lett.* **12**, 45–56 (2009).

38. Freschet, G. T., Weedon, J. T., Aerts, R., van Hal, J. R. & Cornelissen, J. H. C. Interspecific differences in wood decay rates: insights from a new short-term method to study long-term wood decomposition. *J. Ecol.* **100**, 161–170 (2012).
39. Schilling, J. S., Ayres, A., Kaffenberger, J. T. & Powers, J. S. Initial white rot type dominance of wood decomposition and its functional consequences in a regenerating tropical dry forest. *Soil Biol. Biochem.* **88**, 58–68 (2015).
40. Freitag, C. & Morrell, J. J. Decay resistance of China-fir (*Cunninghamia lanceolata* (Lambert) Hooker). *For. Prod. J.* **56**, 29–30 (2006).
41. Wang, J., Li, J., Li, S., Freitag, C. & Morrell, J. J. Antifungal activities of *Cunninghamia lanceolata* heartwood extractives. *BioResources* **6**, 606–614 (2011).
42. Kokutse, A. D., Stokes, A., Baillères, H., Kokou, K. & Baudasse, C. Decay resistance of Togolese teak (*Tectona grandis* L.f) heartwood and relationship with colour. *Trees* **20**, 219–223 (2006).
43. Adegeye, A. O., Ogunsanwo, O. Y. & Olajuyigbe, S. O. Antifungal activities of heart wood extract (HWE) of teak *Tectona grandis* against two white rots in woods of *Gmelina arborea* and *Triplochiton scleroxylon*. *Acad. J. Plant Sci.* **2**, 279–285 (2009).
44. Bhat, U. H. I., Khalil, H. P. S. A., Shuib, N. S. & Noorr, A. M. Antifungal activity of heartwood extracts and their constituents from cultivated *Tectona grandis* against *Phanerochaete chrysosporium*. *Wood Res.* **55**, 59–66 (2010).
45. Lukmandaru, G. & Takahashi, K. Variation in the natural termite resistance of teak (*Tectona grandis* Linn. fil.) wood as a function of tree age. *Ann. For. Sci.* **65**, 708 (2008).
46. Liu, W. J., Wang, P. Y., Li, J. T., Li, P. J. & Liu, W. Y. The importance of radiation fog in the tropical seasonal rain forest of Xishuangbanna, south-west China. *Hydrol. Res.* **39**, 79–87 (2008).
47. Liu, W., Meng, F.-R., Zhang, Y., Liu, Y. & Li, H. Water input from fog drip in the tropical seasonal rain forest of Xishuangbanna, South-West China. *J. Trop. Ecol.* **20**, 517–524 (2004).
48. Bardgett, R. D., Keiller, S., Cook, R. & Gilburn, A. S. Dynamic interactions between soil animals and microorganisms in upland grassland soils amended with sheep dung: A microcosm experiment. *Soil Biol. Biochem.* **30**, 531–539 (1998).
49. Paudel, E. *et al.* Quantifying the factors affecting leaf litter decomposition across a tropical forest disturbance gradient. *Ecosphere* **6**, 267 (2015).
50. Fasth, B. G., Harmon, M. E., Sexton, J. & White, P. Decomposition of fine woody debris in a deciduous forest in North Carolina. *J. Torrey Bot. Soc.* **138**, 192–206 (2011).
51. Williamson, G. B. & Wiemann, M. C. Measuring wood specific gravity...Correctly. *Am. J. Bot.* **97**, 519–524 (2010).
52. Chen, X., Cannon, C. H. & Conklin-Brittan, N. L. Evidence for a trade-off strategy in stone oak (*Lithocarpus*) seeds between physical and chemical defense highlights fiber as an important antifeedant. *PLoS One* **7**, e32890 (2012).
53. Warton, D. I. & Hui, F. K. C. The arcsine is asinine: The analysis of proportions in ecology. *Ecology* **92**, 3–10 (2011).
54. R Foundation for Statistical Computing. *R: A language and environment for statistical computing*. R Foundation for Statistical Computing. at <http://www.r-project.org/> (2015).
55. Pinheiro, J., Bates, D., Debroy, S., Sarkar, D. & Team, R. D. C. nlme: Linear and Nonlinear Mixed Effects Models. *R package version* **3**, 1–101 (2013).
56. Lenth, R. V. Least-Squares Means: The {R} Package {lsmeans}. *J. Stat. Softw.* **69**, 1–33 (2016).

Acknowledgements

We are grateful to the horticulture department and the Biogeochemistry laboratory of Xishuangbanna Tropical Botanical Garden (XTBG) and Lulu Chen for data entry. We are also indebted to Prof. Hans Cornelissen, and Prof. Jianchu Xu for their ideas and comments while designing and writing up this study. Reviewers comments on early version of this manuscript have improved a lot this manuscript. We appreciated logistic support from Dr. Jiaolin Zhang and Prof. Yanqiong Peng. This study was supported by a National Science Foundation of China grant (NSFC #31470546) awarded to R.D.H. and the GIZ/BMZ Projects #08 7860 3-001 00 and #13 1432 7-001 00 to Professor Xu Jianchu (ICRAF).

Author Contributions

G.G.O.D., E.P. and R.D.H. conceived the study, G.G.O.D. conducted the experiment, G.G.O.D. and R.D.H. performed statistical analyses, G.G.O.D. wrote the first draft of the manuscript, and G.G.O.D., E.P., K.C., D.S. and R.D.H. contributed substantially to revisions. All authors reviewed the manuscript.

Additional Information

Supplementary information accompanies this paper at <http://www.nature.com/srep>

Competing financial interests: The authors declare no competing financial interests.

How to cite this article: Dossa, G. G. O. *et al.* Factors controlling bark decomposition and its role in wood decomposition in five tropical tree species. *Sci. Rep.* **6**, 34153; doi: 10.1038/srep34153 (2016).



This work is licensed under a Creative Commons Attribution 4.0 International License. The images or other third party material in this article are included in the article's Creative Commons license, unless indicated otherwise in the credit line; if the material is not included under the Creative Commons license, users will need to obtain permission from the license holder to reproduce the material. To view a copy of this license, visit <http://creativecommons.org/licenses/by/4.0/>

© The Author(s) 2016