



Surgical Reconstruction Using a Flanged Mesh Cage without Plating for Cervical Spondylotic Myelopathy and a Symptomatic Ossified Posterior Longitudinal Ligament

Jung Hoon Kang, Soo-Bin Im, Sang-Mi Yang, Moonyoung Chung, Je Hoon Jeong, Bum-Tae Kim, Sun-Chul Hwang, Dong-Seong Shin, Jong-Hyun Park

Department of Neurosurgery, Soonchunhyang University Bucheon Hospital, Soonchunhyang University College of Medicine, Bucheon, Korea

Objective : We introduce innovative method of cervical column reconstruction and performed the reconstruction with a flanged titanium mesh cage (TMC) instead of a plate after anterior corpectomy for cervical spondylotic myelopathy (CSM) and an ossified posterior longitudinal ligament (OPLL).

Methods : Fifty patients with CSM or OPLL who underwent anterior cervical reconstruction with a flanged TMC were investigated retrospectively. Odom's criteria were used to assess the clinical outcomes. The radiographic evaluation included TMC subsidence, fusion status, and interbody height. Thirty-eight patients underwent single-level and 12 patients underwent two-level corpectomy with a mean follow-up period of 16.8 months.

Results : In all, 19 patients (38%) had excellent outcomes and 25 patients (50%) had good outcomes. Two patients (4%) in whom C5 palsy occurred were categorized as poor. The fusion rate at the last follow-up was 98%, and the severe subsidence rate was 34%. No differences in subsidence were observed among Odom's criteria or between the single-level and two-level corpectomy groups.

Conclusion : The satisfactory outcomes in this study indicate that the flanged TMC is an effective graft for cervical reconstruction.

Key Words : Cervical vertebrae · Ossification of posterior longitudinal ligament · Spondylosis · Titanium.

INTRODUCTION

Anterior cervical corpectomy and reconstruction comprise a treatment for cervical spondylotic myelopathy (CSM) or an ossified posterior longitudinal ligament (OPLL)^{5,10,21,23}. An anterior plate was first applied to overcome the high reoperation rate and symptomatic pseudarthrosis associated with anterior

cervical corpectomy and reconstruction using iliac bone grafts⁶. This practice was followed even when a titanium mesh cage (TMC) graft was used instead of iliac bone. Many institutions currently use TMCs with anterior plate augmentation as a reconstructive method^{7,10,12,21,23}. Many studies have addressed the advantages of anterior cervical plate fixation, such as improved stability, improved fusion percentages, de-

• Received : February 28, 2019 • Revised : April 2, 2019 • Accepted : April 9, 2019

• Address for reprints : **Soo-Bin Im**

Department of Neurosurgery, Soonchunhyang University Bucheon Hospital, Soonchunhyang University College of Medicine, 170 Jomaru-ro, Bucheon 14584, Korea
Tel : +82-32-621-5290, Fax : +82-32-621-5016, E-mail : isbrzw@gmail.com, ORCID : <https://orcid.org/0000-0002-1442-0482>

This is an Open Access article distributed under the terms of the Creative Commons Attribution Non-Commercial License (<http://creativecommons.org/licenses/by-nc/4.0>) which permits unrestricted non-commercial use, distribution, and reproduction in any medium, provided the original work is properly cited.

creased duration of fusion, prevention of graft migration, maintenance of intervertebral height, and a shorter duration of brace use^{2,20}), whereas other studies have reported that the anterior plate is not as effective as expected^{1,2,6}. Epstein⁶) compared single-level anterior cervical corpectomy and fusion performed with and without plates and found that plating did not reduce pseudarthrosis or the graft extrusion rate. Al-Mashani et al.¹) suggested that an anterior plate does not lead to a better result. Benzel and Francis²) reported that anterior plating required additional soft tissue retraction, which led to a longer operating time. Without a firm screw-bone interface, the anterior plate can still be dislodged from the vertebral body and may cause mechanical problems¹⁵), even if the plate has a screw-locking system. We hypothesized that an additional plate is not crucial to cervical stability. We devised a novel reconstruction method using a TMC with flanges instead of an additional anterior plate for fixation. This new method has not been reported before. This study was designed to investigate clinical and radiographic outcomes of anterior corpectomy and reconstruction using a flanged TMC instead of an anterior plate for CSM and OPLL. We also evaluated whether this method could be an alternative option for cervical reconstruction.

MATERIALS AND METHODS

Patient population

This retrospective study enrolled 50 patients with CSM or OPLL between January 2012 and January 2018 at a single institution. All patients underwent single- or two-level anterior corpectomy and reconstruction using a flanged TMC. Include criteria were patients presented with both clinical and radiographic evidence of CSM or OPLL and were refractory to conservative treatment. Exclude criteria included previous cervical spine surgery, cervical spine trauma, active infection and neoplasm. Information about patients, surgery, and associated perioperative complication were obtained from medical records. This study was approved by Soonchunhyang University Bucheon Hospital Institutional Review Board (IRB No. 2019-01-006-001).

Surgical procedures

A 15-mm SynMesh cage (DePuy Synthes, Zuchwil, Switzer-

land) was used for reconstruction. Corpectomy and decompression were performed using standard methods. We trimmed the edge of the TMC to the appropriate height with cutters and tailored it to have small flanges in the uppermost and lowermost parts of the midline. The both end of TMC was bend outward like sunflower to increase the surface area. All cages were filled with autologous bone harvested at the local corpectomy site (Fig. 1). No TMC endcaps were used. The TMC was positioned on the anterior-most part of the vertebral body adjacent to the cortical rim and fixed with one or two screws in the flanges. All cases were operated on by the same surgeon. The patients were instructed to wear a soft collar for 4 to 6 weeks postoperatively.

Clinical assessment

We used Odom’s criteria (Table 1) and divided the patients into four categories of excellent, good, fair, and poor based on improvement of their preoperative symptoms and ability to carry out daily activities. We also investigated surgery-related complications, including neurological deficit, cerebrospinal fluid (CSF) leakage, dysphasia, hoarseness, neck pain, and hardware complications such as screw breakage or loosening.

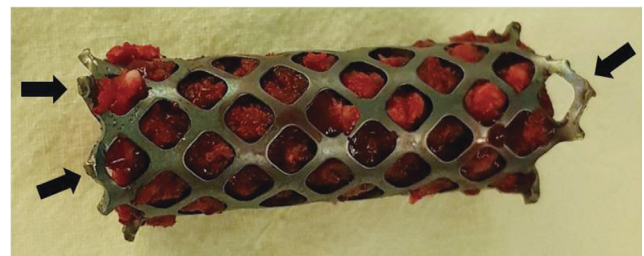


Fig. 1. Prepared mesh cage. The titanium mesh cage had small flanges with a hole at the upper end and two holes at the lower end (black arrows). The cage was filled with autologous bone.

Table 1. Odom’s criteria

Outcome	Criterion
Excellent	All preoperative symptoms relieved. Abnormal findings improved.
Good	Minimal persistence of preoperative symptoms. Abnormal finding unchanged or improved.
Fair	Definite relief of some preoperative symptoms. Other symptoms unchanged or improved slightly.
Poor	Symptoms and signs unchanged or worse.

Radiological assessment

All patients were assessed via plain anteroposterior (AP), lateral, and flexion-extension X-rays preoperatively, plain X-rays and computed tomography (CT) during the immediate postoperative period and subsequent repeated radiological follow-up at regular intervals. Anterior and posterior interbody height (AIBH and PIBH) were assessed from plain lateral radiographs (Fig. 2). The AIBH is the length between the anterior portions of the adjacent upper and lower endplates, and the PIBH is the length between the posterior portions of the adjacent upper and lower endplates. Mean interbody height (MIBH) was defined as the average of AIBH and PIBH. We used postoperative CT in cases involving a lower cervical segment or when the segment could not be seen on a plain radiograph. Subsidence was defined as the difference between the postoperative and final follow-up values. Patients with ≥ 3 mm of change were classified as the severe subsidence group⁴.

Successful fusion was defined as radiological cross-trabeculation in the plain AP and lateral views or in CT by a lack of

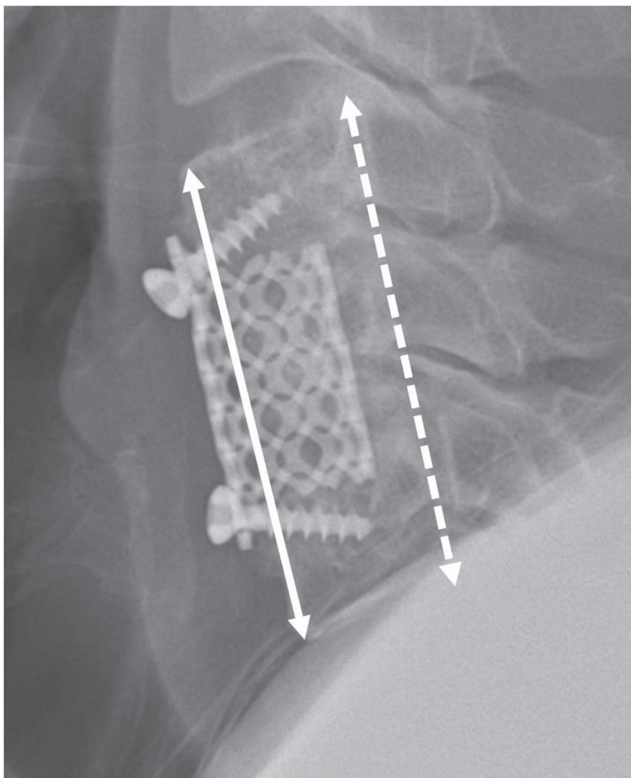


Fig. 2. Anterior interbody height (AIBH) and posterior interbody (PIBH) height measuring methods. AIBH is the length between the anterior portions of the adjacent upper and lower endplates (solid line). PIBH is the length between the posterior portions (dashed line).

segmental movement in the flexion-extension views, and no radiolucent gap around the implanted cage¹⁶.

Statistical analyses

Statistical analyses were performed using SPSS version 25.0 (IBM Corp., Armonk, NY, USA). Quantitative data are presented as mean \pm standard deviation. The level of significance was set at $p < 0.05$. The paired t-test, one-way analysis of variance, and Pearson's correlation analyses were used.

RESULTS

Demographic characteristics

The demographic characteristics are shown in Table 2. This study included 50 patients (35 females and 15 males; mean

Table 2. Demographic characteristics of the 50 patients who underwent a cervical corpectomy using a flanged mesh cage

Variable	Value
Gender	
Male	15 (30.0)
Female	35 (70.0)
Age (years)	59.6 \pm 11.1
Follow-up period (months)	16.8 \pm 13.7 (2–55)
Diagnosis	
CSM	26 (52.0)
OPLL	24 (48.0)
Extent of corpectomy	
1	38 (76.0)
2	12 (24.0)
Level of corpectomy	
C4	9 (18.0)
C5	17 (34.0)
C6	12 (24.0)
C3–4	3 (6.0)
C4–5	2 (4.0)
C5–6	7 (14.0)
Screw fixation	
Yes	47 (94.0)
No	3 (6.0)

Values are presented as number (%) or mean \pm standard deviation (range). CSM : cervical spondylotic myelopathy, OPLL : ossified posterior longitudinal ligament

age, 59.6 years). The mean follow-up period was 16.8 months. Pathologies included OPLL (n=24) and CSM (n=26). Thirty-eight (76%) patients received a single-level corpectomy and 12 (24%) received a two-level corpectomy.

Clinical outcomes

Most of the patients showed improved neurological symptoms. At the last follow-up, 19 patients (38%) were classified as excellent, 25 (50%) as good, four (8%) as fair, and two (4%) as poor based on Odom’s criteria. Surgery-related complications included two patients with C5 palsy, two with CSF leakage, three with hoarseness, and three with dysphasia. The patients with C5 palsy underwent revision surgery, and the symptom was resolved. The two patients with CSF leakage were successfully treated with bed rest and antibiotics. The hoarseness and dysphasia were temporary, and no patients showed hoarseness or dysphasia at the last follow up. No infections, epidural hematomas, or visceral injuries were observed during the follow-up period. The most common hardware complication was screw breakage (n=8), which occurred mainly in the early period, followed by screw loosening (n=6). No cage extrusions occurred (Table 3).

Radiological outcomes

Table 4 summarizes the radiological outcomes of the 50 patients. The mean extent of the corpectomy was 1.24. The overall fusion rate was 98% and no pseudoarthrosis according to

Table 3. Clinical outcomes of the 50 patients

	Value
Odom’s criteria	
Excellent	19 (38.0)
Good	25 (50.0)
Fair	4 (8.0)
Poor	2 (4.0)
Complication	
C5 palsy	2 (4.0)
Cerebrospinal fluid leakage	2 (4.0)
Hoarseness	3 (6.0)
Dysphasia	3 (6.0)
Screw breakage	8 (16.0)
Screw loosening	6 (12.0)

Values are presented as number (%)

the last follow-up X-rays. One case required reinforced reconstruction with an anterior plate because subsidence progressed and C5 palsy occurred. The average MIBH was 56.8±10.8 mm immediately after surgery and 54.0±10.3 mm at the last follow up. Subsidence of MIBH was 2.8±2.4. The subsidence rate was 34% (n=17) at the last follow up.

Relationship between subsidence and Odom’s criteria, age, follow-up period, and corpectomy level

Correlation analyses were performed to investigate the relationship between MIBH subsidence and Odom’s criteria, age, follow-up period, and corpectomy level. Subsidence tended to be larger in the poor Odom’s criteria group than in the excel-

Table 4. Radiological outcomes of the 50 patients

	Postoperation	Final follow-up	Subsidence	p-value
AIBH	57.0±10.8	53.8±10.4	3.3±2.5	<0.001
PIBH	56.5±11.0	54.2±10.3	2.3±2.6	<0.001
MIBH	56.8±10.8	54.0±10.3	2.8±2.4	<0.001
Mean extent of corpectomy	1.24			
Fusion rate	98%			
Severe subsidence	17 (34%)			

AIBH : anterior interbody height, PIBH : posterior interbody height, MIBH : mean interbody height

Table 5. Relationships among Odom’s criteria, age, follow-up period, corpectomy level, and subsidence

	Value	p-value
Odom’s criteria		0.381*
Excellent	2.6±1.7	
Good	3.0±2.7	
Fair	1.6±0.8	
Poor	5.0±4.1	
Age (r value)	-0.066 [†]	0.648
Follow-up period (r value)	-0.068 [†]	0.638
Corpectomy		0.127 [‡]
1	2.4±2.1	
2	3.9±3.0	

Values are presented as mean±standard deviation or number. *Values analyzed by univariate analysis of variance. [†]Values shown in terms of r and p values based on Pearson correlation analysis. [‡]Values analyzed using the independent t-test

lent and good groups ($p=0.381$) (Table 5). No correlations were observed between subsidence and age or follow-up period (Table 5). The mean subsidence of patients who underwent a two-level corpectomy was 3.9 ± 3.0 mm, which tended to be greater than that of patients who underwent a single-level corpectomy (2.4 ± 2.1 mm; $p=0.127$) (Table 5).

Illustrative cases

A 64-year-old man complained of hand and leg tingling sensation on both sides for 2 year and symptoms got worse overtime. Both hands grasping power started weakened from 1 month ago. A cervical magnetic resonance imaging (MRI) showed at C3–C7 with spinal canal stenosis in C3–5 compressing spinal cord. We performed a C2/3 and C5/6 discectomy, C3 and C4 corpectomy and decompression OPLL at C3–C4. His symptoms improved to “good” after surgery based on Odom’s criteria. The patient did not complain of any complications at 6 months after operation, and cord compression was resolved, and bone fusion occur on follow-up MRI and X-ray (Fig. 3).

A 56-year-old women present with gait disturbance due to both leg weakness for the 3 months and both hands tingling sensation was started 1 weeks before visiting our hospital. A preoperative MRI showed compressive myelopathy at C5/6

and C6/7 due to disc extrusion. We performed a discectomy at C5/6 and C6/7, and total C6 corpectomy. Her symptoms improved to “excellent” after surgery based on Odom’s criteria (Fig. 4).

DISCUSSION

We introduced an innovative cervical reconstruction using a TMC with flanges instead of an additional anterior plate for fixation. The key point of this article is evaluation of flanges and direct screw fixation into the flanged hole at TMC. The flanges play a key role in stability because they are used to position the TMC effectively in the anterior-most portion of the vertebral body. In contrast, the ends of a conventional strut graft lack such protrusions¹⁷⁾. The location of a strut graft is important to the efficacy of the reconstruction⁹⁾. The outer shell of the vertebra consists of cortical bone that is stronger than the cancellous bone that comprises the inner part of the vertebra. The cortical rim on the upper and lower edges of the vertebra is the strongest portion of the outer shell of a vertebra. The anterior-most location of a strut graft allows maximum contact with the anterior cortical rim, which is undamaged, unlike the posterior part. The posterior cortical rim is

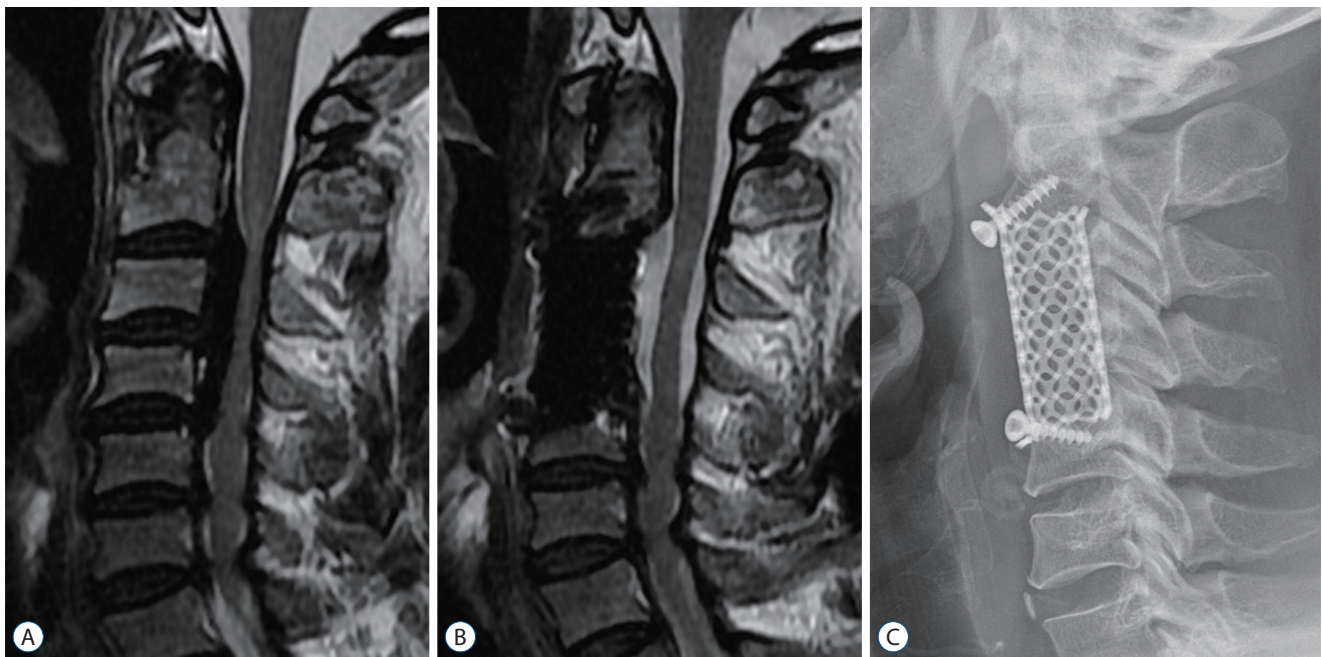


Fig. 3. A 64-year-old man who underwent C3–4 corpectomy and reconstruction with flanged titanium mesh cage. A : Preoperative cervical magnetic resonance image (MRI); ossified posterior longitudinal ligament at C3–7. B : Cervical MRI 6 months after operation. C : Cervical X-ray at 6 months after surgery.

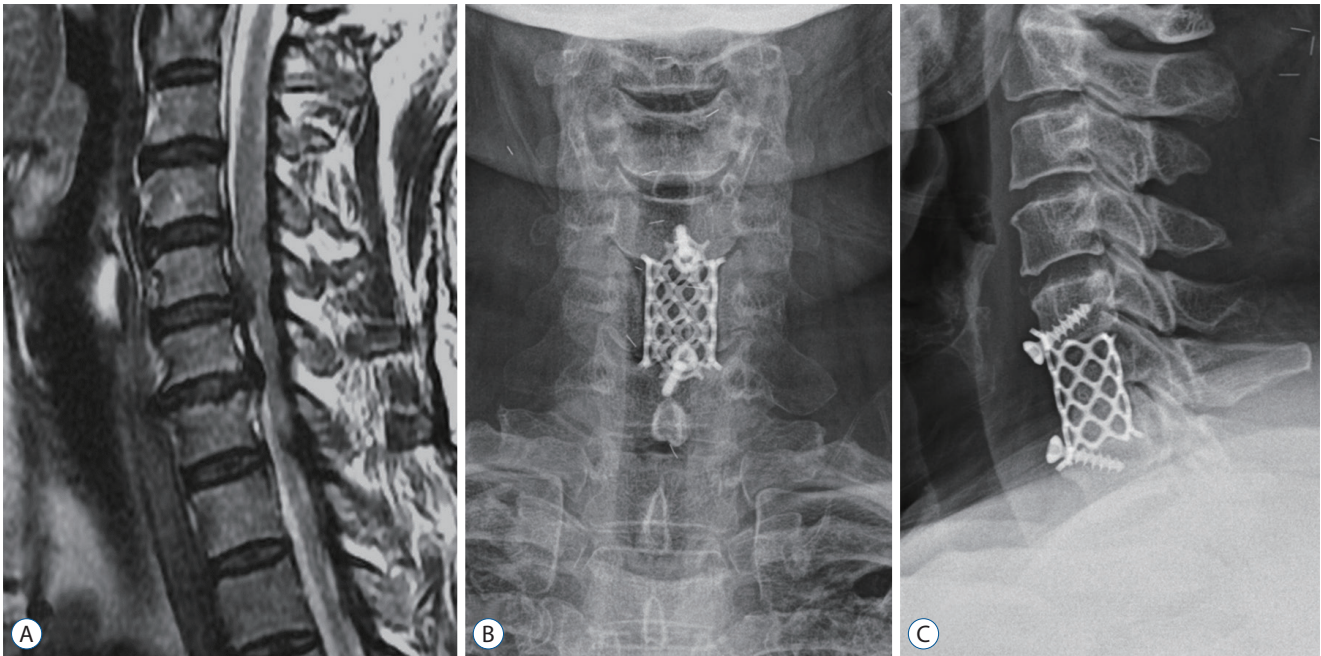


Fig. 4. A 56-year-old women who underwent C6 corpectomy and reconstruction with flanged titanium mesh cage. A : Preoperative cervical magnetic resonance imaging. B : Anteroposterior view; outward bended end of titanium mesh cage supports the vertebral body. C : Lateral view; flanges are fixed with screws are maintain well without extrusion.

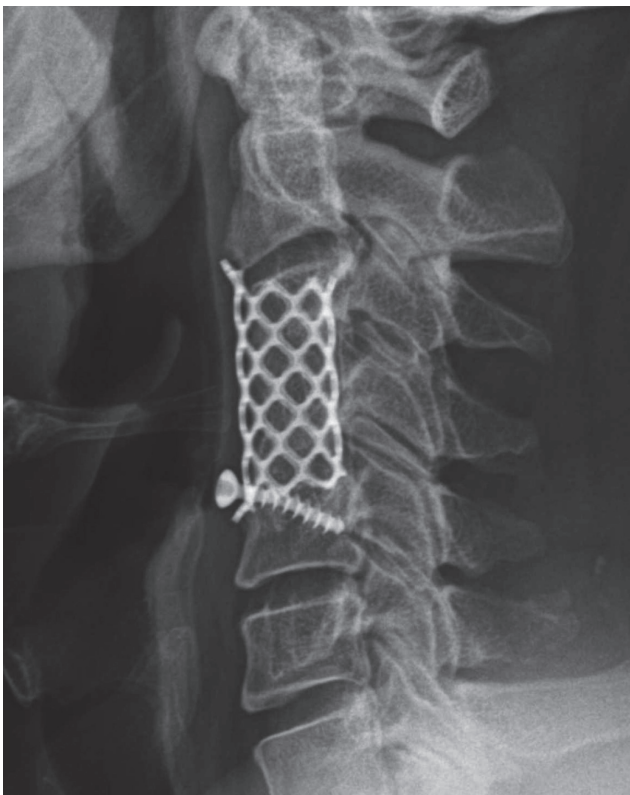


Fig. 5. The subtotal corpectomy and reconstruction with one screw; the flanged cage contact to the rough cancellous bone surface. Cage dislocation has not occurred with one screw. Successful fusion is achieved.

often undermined to remove posterior osteophytes or calcified ligaments, which makes the area more vulnerable to subsidence. This minimizes kyphotic angular deformation and subsidence¹⁰. Graft subsidence can result if a strut graft is located centrally on the vertebral body due to a relatively weak cancellous bone portion. The bone graft in conventional anterior plate fixation may be located slightly more posterior to the anterior vertical line due to the anterior plate. Flanged mesh fixation and fitting at the cortical rim appear to be much easier than fitting mesh without flange.

The screw in conventional anterior plating frequently penetrates the mid-body of the cervical vertebra where the segmental vessels penetrate, and cancellous bone is abundant. We fix a cancellous screw in the cortical margin through the upper and lower holes of the flange. The screw through the flange directly penetrates the cortical rim. This appears to be effective in increasing postoperative stability and securing the graft because the cortical rim is much stronger than the mid-portion of the vertebral body.

Screw breakage has been reported in 3.2% to 10% of cases with an anterior plate in the references^{15,17}. In this study, screws broke more frequently (n=6, 12%) but did not affect the fusion rate or lead to complications. The role of the screw

is to prevent the cage from dislodging only in the early phase of the fusion process. As the fusion progresses, the role of screws diminishes. We demonstrated a case even though the screw is broken, but the fusion is well done (Fig. 5). We use one screw in 42% of the subtotal corpectomy case. The surface of the subtotal corpectomy site which the flanged cage will contact is rough cancellous bone, not the solid endplate. The cage dislocation is not expected without the screw at this subtotal corpectomy site and dislodgement is not occurred in our series even in fixing with one screw (Fig. 5).

We had good overall clinical outcomes with an enough follow-up period. We achieved a 98% fusion rate and satisfactory clinical improvement at the last follow-up evaluation. Of the patients, 19 (38%) were classified as excellent and 25 (50%) as good based on Odom's criteria. The mean follow-up period was 16.8 ± 13.7 months. Panchal et al.¹⁷⁾ reported the clinical results of 91 patients who had undergone TMC with an anterior plate; of the patients, 27 (33.8%) were classified as excellent and 24 (30.0%) as good based on Odom's criteria.

Chen et al.⁴⁾ reported subsidence in 300 patients who underwent anterior cervical corpectomy with an anterior plate.

The cases of subsidence were divided into a mild group (1–3 mm) and a severe group (>3 mm). In total, 182 cases had mild subsidence (60.7%), and the mean was 1.6 ± 0.2 mm. Severe subsidence occurred in 59 cases (19%), and the mean amount was 3.8 ± 0.4 mm. Jang et al.¹⁰⁾ reported anterior and posterior subsidence in 30 patients who underwent anterior cervical corpectomy with an anterior plate. Mean anterior subsidence was 1.4 ± 0.9 mm, and mean posterior subsidence was 2.9 ± 1.2 mm. Zeng et al.²²⁾ reported 35 patients who underwent anterior cervical corpectomy with an anterior plate. Mean subsidence was 2.8 ± 1.3 mm, and the severe subsidence rate was 31.4%. In the present study, mean subsidence was 2.78 ± 2.35 mm, and the severe subsidence rate was 34%. Thus, our subsidence results are like those associated with anterior cervical corpectomy with a plate.

Nowadays we have made several modifications to reduce subsidence. The ends of the cage are bent outward almost horizontally to increase the contact surface. Due to the cervical lordosis and body alignment, the empty space after corpectomy is trapezoid shape, not square which is narrower at the posterior side. Recently, we trim the cage into a trapezoidal

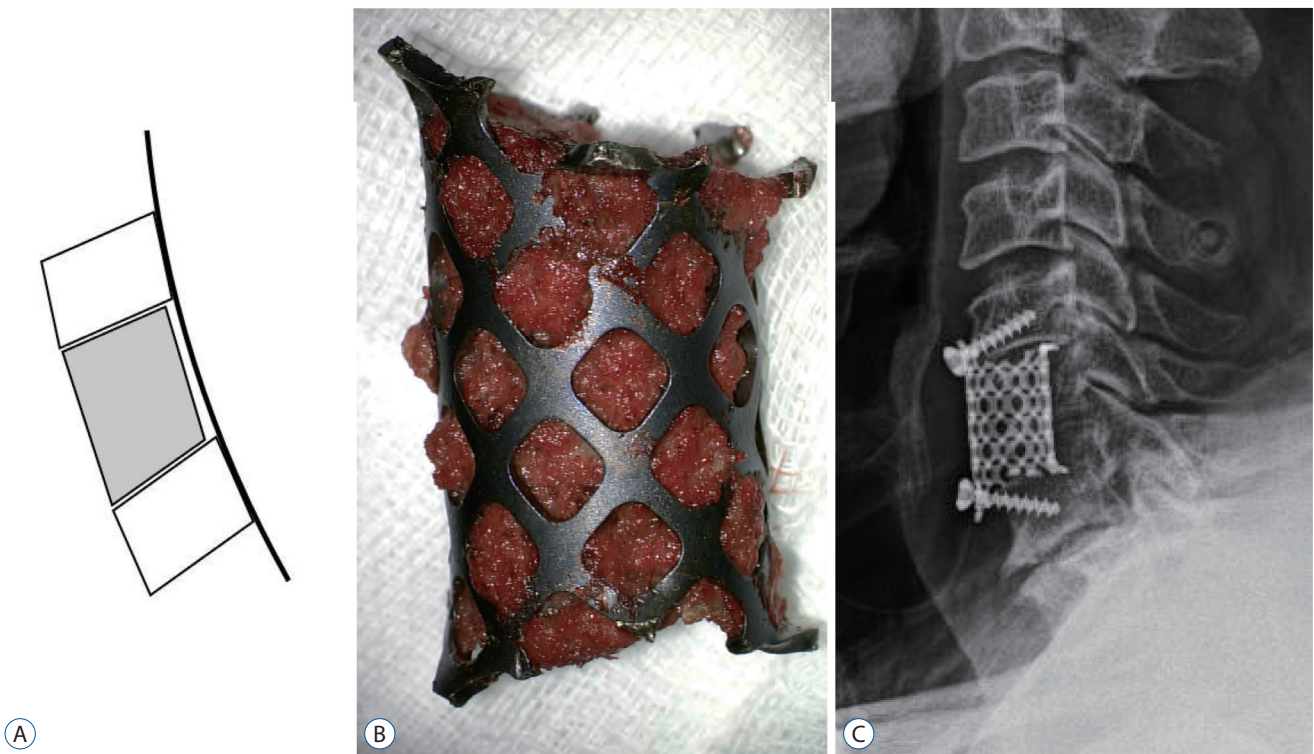


Fig. 6. A : Empty space after corpectomy is trapezoid shape because of cervical lordosis and body alignment. B : Flanged cage with modifications; horizontally bent tip and trapezoid shape. C : Lateral cervical image; reconstruction with modified flanged cage.

shape so that exactly fit into the corpectomy gap. Applying these two modifications, we are expecting the contact area of the cage will be increase and physical pressure will be more evenly distributed and subsidence will be reduced as well⁸⁾ (Fig. 6).

The radiological result supported that cervical reconstruction using the flanged TMC instead of an anterior plate has satisfactory mechanical stability and ability to obtain solid fusion. The overall fusion rate was 98% and no pseudoarthrosis. This result is equivalent or superior to the results reported in reconstruction with anterior plate^{7,10,17,22)}. The subsidence rate was equivalent to reconstruction with anterior plate.

Some authors have suggested that severe subsidence is associated with poor neurological outcomes^{4,20,21)}, whereas others have reported that cage subsidence is not associated with clinical outcome^{10,11,22)}. In the present study, cage subsidence and clinical outcome were not statistically relevant, but the mean “poor” subsidence was significantly high. Only two patients had poor outcomes and four patients had fair outcomes. This might have become significant with a larger number of patients. We attempted to identify factors affecting subsidence, such as age, follow-up period, and level of corpectomy, but none of the factors was significant.

Complications associated with anterior cervical corpectomy and reconstruction have been well described in the literature, although their reported incidence varies widely among published series^{14,17,23)}. CSF leakage, hoarseness, and dysphagia are the most common complications^{5,18)}. CSF leakage is usually treated with a lumbar drain¹³⁾. In the present study, we prescribed bed rest for patients with a CSF leak and achieved successful results. Several complications related to anterior plate were reported from mechanical failure to clinical symptoms^{15,18)}. Although controversial, some authors suggested implying anterior plate increase chance of dysphasia¹⁸⁾. In our study, three patients (6%) experienced dysphasia but this resolved spontaneously. Our reconstruction can avoid complication associated with the anterior plate.

C5 palsy is a well-documented complication of cervical spinal surgery. The incidence of this complication is 0% to 30%, depending on the type of procedure and approach^{3,17,19)}. Various treatments have been suggested for C5 palsy, such as conservative treatment, physical therapy, and a surgical procedure¹⁹⁾. In the present study, two patients experienced C5 palsy and were classified as “poor” based on Odom’s criteria. A

48-year-old man suffered from right arm pain for 3 years and was diagnosed with OPLL at C4–C5. He underwent a C5 corpectomy, and his symptoms improved. Five months later, he complained of right C5 palsy symptoms, and took a cervical MRI, which showed right C4/5 foramen stenosis. We performed a right C4/5 and C5/6 anterior foraminotomy. The palsy improved after revision surgery. In the other case, a 63-year-old man had right arm pain for 1 month and was diagnosed with CSM at C4–C5. He underwent C5 corpectomy, and his right arm pain improved but the left arm developed weakness. A follow-up cervical MRI and left C4/5 and C5/6 foraminotomy were performed. Right arm weakness occurred 1 month later, and we performed a right C4/5 and C5/6 foraminotomy with an anterior plate. The weakness in both arms improved after surgery. Subsidence and a broken screw occurred in both cases. The first case improved with a foraminotomy alone, whereas the second case required an additional anterior plate. The difference between the two cases was presumed to be osteoporosis. The bone mineral density score of the 63-year-old man was $-2.9 T$, and fragile bones were observed during surgery. Therefore, we applied an anterior plate to reinforce the osteoporotic bone, and no additional subsidence occurred. Fusion was observed at the last follow-up on cervical X-rays.

CONCLUSION

We evaluated innovative design of flanged TMC for the anterior reconstruction of cervical corpectomy. Using a flanged TMC in anterior cervical corpectomy and reconstruction for OPLL and CSM resulted in favorable clinical outcomes, excellent fusion, and an acceptable subsidence rate. These outcomes indicate that a flanged TMC is an effective graft for cervical reconstruction. This method not only simplifies reconstruction but also helps avoid plate-related complications and could be an alternative option for cervical reconstruction.

CONFLICTS OF INTEREST

No potential conflict of interest relevant to this article was reported.

INFORMED CONSENT

This type of study does not require informed consent.

AUTHOR CONTRIBUTIONS

Conceptualization : SBI

Data curation : SMY, JHK

Formal analysis : MC, JHK

Funding acquisition : SBI

Methodology : SBI, JHJ

Project administration : JHK

Visualization : JHK

Writing - original draft : JHK, SBI

Writing - review & editing : BTK, SCH, DSS, JHP

• Acknowledgements

This work was supported by the Soonchunhyang University Research Fund.

References

- Al-Mashani AMM, Lad S, Salhotra N, Ali A, Khan RM, Kaul N : Comparison of the efficacy of multi level cervical discectomy and corpectomy using titanium cage with and without anterior cervical plate. **Am J Med Case Rep** 3 : 406-409, 2015
- Benzel EC, Francis TB : **Spine surgery: techniques, complication avoidance and management**. Philadelphia : Elsevier/Saunders, 2012
- Bydon M, Macki M, Kaloostian P, Sciubba DM, Wolinsky JP, Gokaslan ZL, et al. : Incidence and prognostic factors of c5 palsy: a clinical study of 1001 cases and review of the literature. **Neurosurgery** 74 : 595-604; discussion 604-605, 2014
- Chen Y, Chen D, Guo Y, Wang X, Lu X, He Z, et al. : Subsidence of titanium mesh cage: a study based on 300 cases. **J Spinal Disord Tech** 21 : 489-492, 2008
- Chen Y, Chen D, Wang X, Lu X, Guo Y, He Z, et al. : Anterior corpectomy and fusion for severe ossification of posterior longitudinal ligament in the cervical spine. **Int Orthop** 33 : 477-482, 2009
- Epstein NE : Reoperation rates for acute graft extrusion and pseudarthrosis after one-level anterior corpectomy and fusion with and without plate instrumentation: etiology and corrective management. **Surg Neurol** 56 : 73-80, 2001
- Gao R, Yang L, Chen H, Liu Y, Liang L, Yuan W : Long term results of anterior corpectomy and fusion for cervical spondylotic myelopathy. **PLoS One** 7 : e34811, 2012
- Hasegawa K, Abe M, Washio T, Hara T : An experimental study on the interface strength between titanium mesh cage and vertebra in reference to vertebral bone mineral density. **Spine** 26 : 957-963, 2001
- Hussain M, Nassr A, Natarajan RN, An HS, Andersson GB : Biomechanical effects of anterior, posterior, and combined anterior-posterior instrumentation techniques on the stability of a multilevel cervical corpectomy construct: a finite element model analysis. **Spine J** 11 : 324-330, 2011
- Jang JW, Lee JK, Lee JH, Hur H, Kim TW, Kim SH : Effect of posterior subsidence on cervical alignment after anterior cervical corpectomy and reconstruction using titanium mesh cages in degenerative cervical disease. **J Clin Neurosci** 21 : 1779-1785, 2014
- Karikari IO, Jain D, Owens TR, Gottfried O, Hodges TR, Nimjee SM, et al. : Impact of subsidence on clinical outcomes and radiographic fusion rates in anterior cervical discectomy and fusion: a systematic review. **J Spinal Disord Tech** 27 : 1-10, 2014
- Li J, Zheng Q, Guo X, Zeng X, Zou Z, Liu Y, et al. : Anterior surgical options for the treatment of cervical spondylotic myelopathy in a long-term follow-up study. **Arch Orthop Trauma Surg** 133 : 745-751, 2013
- Mazur M, Jost GF, Schmidt MH, Bisson EF : Management of cerebrospinal fluid leaks after anterior decompression for ossification of the posterior longitudinal ligament: a review of the literature. **Neurosurg Focus** 30 : E13, 2011
- Nakase H, Park YS, Kimura H, Sakaki T, Morimoto T : Complications and long-term follow-up results in titanium mesh cage reconstruction after cervical corpectomy. **J Spinal Disord Tech** 19 : 353-357, 2006
- Ning X, Wen Y, Xiao-Jian Y, Bin N, De-Yu C, Jian-Ru X, et al. : Anterior cervical locking plate-related complications; prevention and treatment recommendations. **Int Orthop** 32 : 649-655, 2008
- Oshima M, Oshima Y, Tanaka S, Riew KD : Radiological fusion criteria of postoperative anterior cervical discectomy and fusion: a systematic review. **Global Spine J** 8 : 739-750, 2018
- Panchal RR, Kim KD, Krel MA, Lopez J, Shahlaie K, Bobinski M : Using titanium mesh cage and anterior cervical plate for cervical corpectomies. **J Spine Neurosurg** 2 : 4, 2013
- Tasiou A, Giannis T, Brotis AG, Siasios I, Georgiadis I, Gatos H, et al. : Anterior cervical spine surgery-associated complications in a retrospective case-control study. **J Spine Surg** 3 : 444-459, 2017
- Thompson SE, Smith ZA, Hsu WK, Nassr A, Mroz TE, Fish DE, et al. : C5 palsy after cervical spine surgery: a multicenter retrospective review of 59 cases. **Global Spine J** 7 : 645-705, 2017
- Yan D, Wang Z, Deng S, Li J, Soo C : Anterior corpectomy and reconstruction with titanium mesh cage and dynamic cervical plate for cervical spondylotic myelopathy in elderly osteoporosis patients. **Arch Orthop Trauma Surg** 131 : 1369-1374, 2011.
- Yang X, Chen Q, Liu L, Song Y, Kong Q, Zeng J, et al. : Comparison of anterior cervical fusion by titanium mesh cage versus nano-hydroxyapatite/polyamide cage following single-level corpectomy. **Int Orthop** 37 : 2421-2427, 2013
- Zeng J, Duan Y, Yang Y, Wang B, Hong Y, Lou J, et al. : Anterior corpectomy and reconstruction using dynamic cervical plate and titanium mesh

- cage for cervical spondylotic myelopathy : a minimum 5-year follow-up study. **Medicine (Baltimore)** 97 : e9724, 2018
23. Zhang Y, Deng X, Jiang D, Luo X, Tang K, Zhao Z, et al. : Long-term results of anterior cervical corpectomy and fusion with nano-hydroxyapatite/polyamide 66 strut for cervical spondylotic myelopathy. **Sci Rep** 6 : 26751, 2016