

# Transforming Growth Factor- $\beta$ in Liver Cancer Stem Cells and Regeneration

Shuyun Rao,<sup>1</sup> Sobia Zaidi,<sup>1</sup> Jaideep Banerjee,<sup>1</sup> Wilma Jogunoori,<sup>1</sup> Raul Sebastian,<sup>1</sup> Bibhuti Mishra,<sup>1,3</sup> Bao-Ngoc Nguyen,<sup>1</sup> Ray-Chang Wu,<sup>2</sup> Jon White,<sup>3</sup> Chuxia Deng,<sup>1,4</sup> Richard Amdur,<sup>1</sup> Shulin Li,<sup>5</sup> and Lopa Mishra<sup>1,3</sup>

Cancer stem cells have established mechanisms that contribute to tumor heterogeneity as well as resistance to therapy. Over 40% of hepatocellular carcinomas (HCCs) are considered to be clonal and arise from a stem-like/cancer stem cell. Moreover, HCC is the second leading cause of cancer death worldwide, and an improved understanding of cancer stem cells and targeting these in this cancer are urgently needed. Multiple studies have revealed etiological patterns and multiple genes/pathways signifying initiation and progression of HCC; however, unlike the transforming growth factor  $\beta$  (TGF- $\beta$ ) pathway, loss of p53 and/or activation of  $\beta$ -catenin do not spontaneously drive HCC in animal models. Despite many advances in cancer genetics that include identifying the dominant role of TGF- $\beta$  signaling in gastrointestinal cancers, we have not reached an integrated view of genetic mutations, copy number changes, driver pathways, and animal models that support effective targeted therapies for these common and lethal cancers. Moreover, pathways involved in stem cell transformation into gastrointestinal cancers remain largely undefined. Identifying the key mechanisms and developing models that reflect the human disease can lead to effective new treatment strategies. In this review, we dissect the evidence obtained from mouse and human liver regeneration, and mouse genetics, to provide insight into the role of TGF- $\beta$  in regulating the cancer stem cell niche. (*Hepatology Communications* 2017;1:477–493)

## Introduction

Cancer stem cells have established mechanisms that contribute to tumor heterogeneity as well as resistance to therapy.<sup>(1–4)</sup> Yet to date, the switches involved in stem cell transformation in the liver and the definitive role of key pathways involved in liver regeneration and cancer remain partially understood. Multiple studies have revealed etiological patterns and multiple genes/pathways signifying initiation and progression of HCC. These pathways include CTNNB1/WNT- $\beta$ -catenin, TP53, ARID1/2s, HGF/c-Met, and

vascular endothelial growth factor/angiogenic signaling.<sup>(5–12)</sup> However, unlike the transforming growth factor  $\beta$  (TGF- $\beta$ ) pathway, loss of p53 and/or activation of  $\beta$ -catenin do not spontaneously drive HCC in animal models.<sup>(13–15)</sup>

Primary cancer of the liver (HCC) currently remains among the most prevalent and lethal cancers, with ~17% 5-year survival rate (2007–2013).<sup>(2,16–18)</sup> Drug resistance is one of the causal factors for therapy failure and is associated with the existence of tumor-like stem cells.<sup>(15)</sup> Yet driving pathways and mechanistic insight into stem cell transformation, leading to targeted therapeutics, remain poorly understood for these cancers. We review insight into how

*Abbreviations:*  $\beta$ 2SP,  $\beta$ 2 spectrin; BMP, bone morphogenetic protein; BWS, Beckwith–Weidemann syndrome; Cdk, cyclin-dependent kinase; CSC, cancer stem cell; CTCF, CCCTC-binding factor; ESC, embryonic stem cell; HCC, hepatocellular carcinoma; HGF, hepatocyte growth factor; IL-6, interleukin-6; LSC, liver stem cell; NF- $\kappa$ B, nuclear factor kappa B; Oct3/4, octamer 3/4; PHx, partial hepatectomy; STAT3, signal transducer and activator of transcription 3; TAK1, TGF- $\beta$ -activated kinase 1; TBR1, TGF- $\beta$  type I receptor; TBR2, TGF- $\beta$  type II receptor; TGF- $\beta$ , transforming growth factor  $\beta$ ; TNF- $\alpha$ , tumor necrosis factor  $\alpha$ .

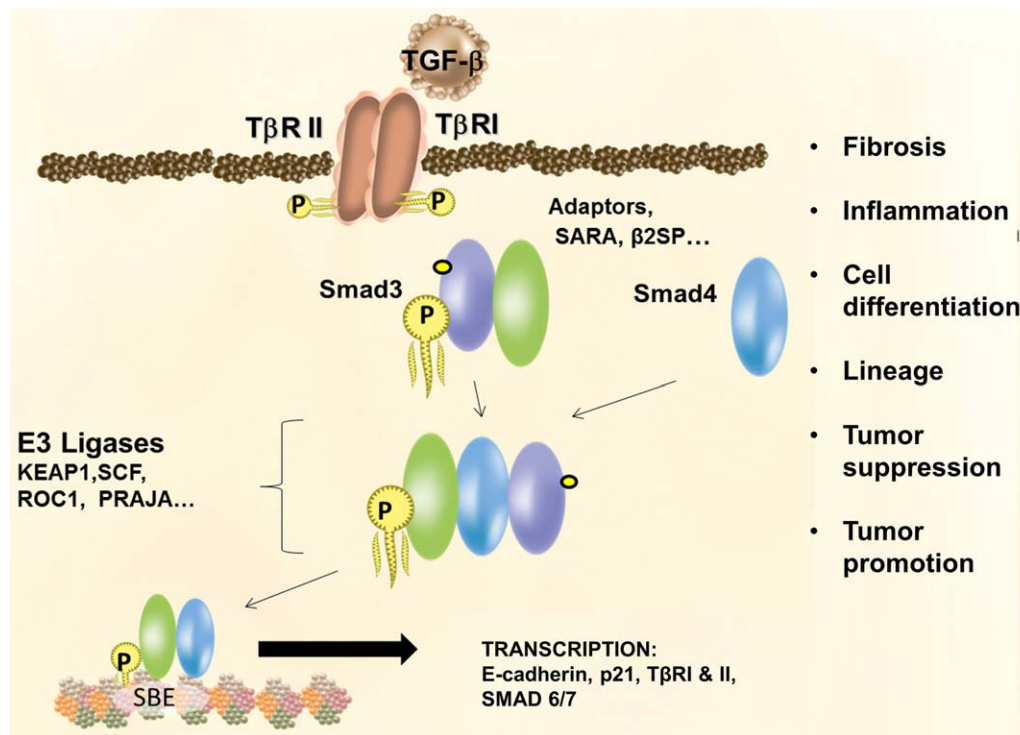
Received January 10, 2017; accepted June 1, 2017.

Copyright © 2017 The Authors. *Hepatology Communications* published by Wiley Periodicals, Inc., on behalf of the American Association for the Study of Liver Diseases. This is an open access article under the terms of the Creative Commons Attribution-NonCommercial-NoDerivs License, which permits use and distribution in any medium, provided the original work is properly cited, the use is non-commercial and no modifications or adaptations are made.

View this article online at [wileyonlinelibrary.com](http://wileyonlinelibrary.com).

DOI 10.1002/hep4.1062

Potential conflict of interest: Nothing to report.



**FIG. 1.** TGF-β serves as an essential regulator of cell polarity, growth, differentiation, lineage specificity, tumor suppression, and tumor promotion in multiple cell types.

TGF-β drives these cancers and controls the switch from normal stem cells to cancer through mechanistic insight of mouse genetic models.<sup>(13,14)</sup> TGF-β serves as an essential regulator of cell polarity, growth, differentiation, lineage specificity, tumor suppression, as well as tumor promotion in multiple cell types<sup>(13,19)</sup> (Figs. 1–3). Yet the significance of dichotomy in function remains unclear for the liver and gastrointestinal system. Defective TGF-β signaling is

implicated in multiple cancers due to frequent somatic mutations or deregulation of its components, such as Smad3, Smad4, and TGF-β receptors 1 and 2 (TβRI and TβRII).<sup>(15,20,21)</sup> Smads are the intracellular mediators of TGF-β signaling,<sup>(21–24)</sup> and their function is modulated by adaptor proteins such as the Smad anchors and signal transducers, filamin, and microtubules,<sup>(25,26)</sup> as well as E3 ligases such as SMURFs, Ski, PRAJA, Sno, and others.

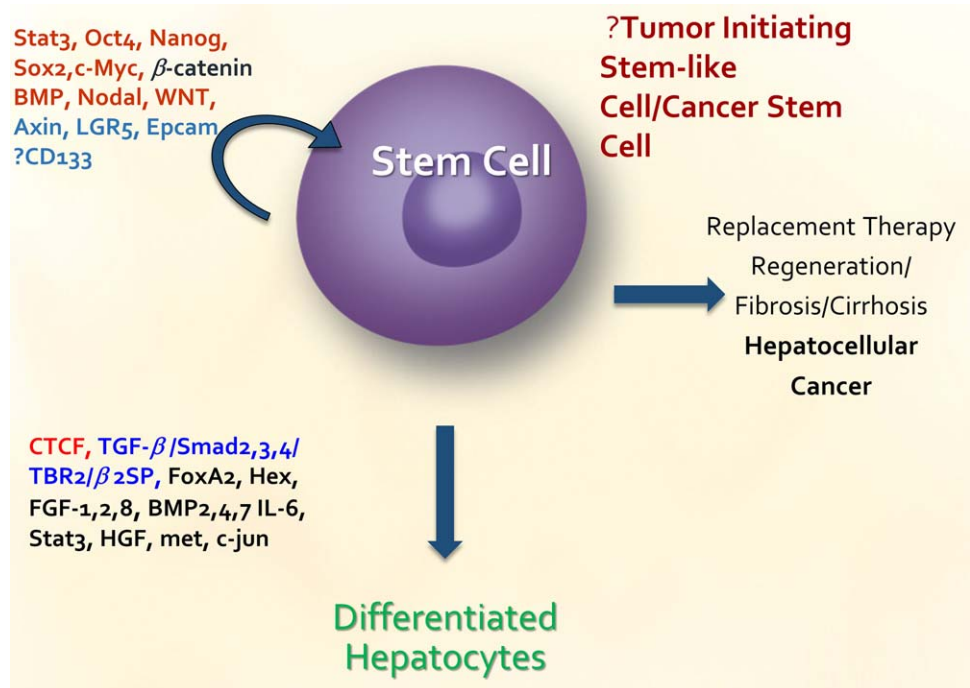
**ARTICLE INFORMATION:**

From the <sup>1</sup>Center for Translational Medicine, Department of Surgery, George Washington University, Washington, DC; <sup>2</sup>Department of Biochemistry and Molecular Medicine, George Washington University, Washington, DC; <sup>3</sup>Institute for Clinical Research, Veterans Affairs Medical Center, Washington, DC; <sup>4</sup>Health Sciences, University of Macau, Taipa, Macau, China; <sup>5</sup>Department of Pediatrics, The University of Texas MD Anderson Cancer Center, Houston, TX.

**ADDRESS CORRESPONDENCE AND REPRINT REQUESTS TO:**

Lopa Mishra, M.D.  
 Bibhuti Mishra, M.D.  
 George Washington University  
 2300 Eye Street NW, Ross Hall 554

Washington, DC 20037  
 E-mail: lmishra@gwu.edu  
 Tel.: (240) 401-2916

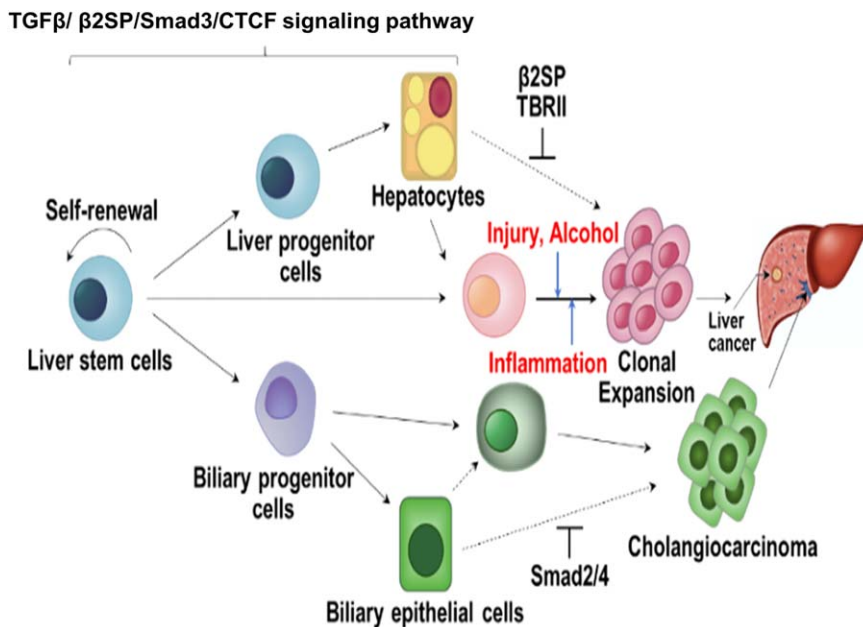


**FIG. 2.** List of genes that has been identified to be important in liver cancer stem cell or normal stem cell function.

Traditionally, TGF- $\beta$  has been considered to be mainly prominent during the termination phase of liver regeneration. However, several TGF- $\beta$ -associated genes have important roles throughout the three phases of liver regeneration and focusing on the temporal fluctuations of these TGF- $\beta$ -associated partners can provide an insight into their function. This review addresses the role of “core” TGF- $\beta$  pathway-related genes (based on a literature search) that are grouped into five different categories, including TGF- $\beta$  “receptors,” “ligands,” “receptor substrates,” “adaptors,” and “inhibitory SMADs.” These genes are TGF- $\beta$ 1-3, TBR1, TGF- $\beta$ RAP1, BMP1-7, BMP9,10, BMP15, BMPR1A, BMPR1B, BMPR2, SMAD1-7, SMAD9, SPTBN1 ( $\beta$ 2SP), ACVR1, ACVR1B, ACVR1C, ACVR2A, ACVR2B, ACVRL1, ZFYVE9, INHA, INHBA, INHBB, INHBC, INHBE, GDF1, GDF11, and NODAL. In addition, other molecules, including E3 ligases, are also associated upstream or downstream of the TGF- $\beta$  pathway and correlate their expression levels with TGF- $\beta$  pathway activity such as SKI, SMURF1-2, ITCH, ITIH4, SARA,  $\beta$ 2SP, ELF1-5, PRAJA1-2, MYC, TERT, RUNX, CTCF, ALDH2, IL-6, STAT3, TWIST1-2, ZEB1, CDK4, TGIF1-2, STRAP, and SNAI1-2.

## Liver Stem Cells and TGF- $\beta$ : Evidence From Mouse Knockout, Lineage Studies, and Human Liver Regeneration

Currently, at least three stem cell populations are known to exist in both mouse<sup>(27)</sup> and human adult liver<sup>(28)</sup>: 1) pericentral Axin2<sup>+</sup> hepatocytes that can regenerate liver in normal homeostasis<sup>(29)</sup>; 2) periportal cells positive for Lgr5<sup>(30)</sup>; 3) Prom1<sup>+</sup> liver stem cells that are located within or adjacent to the Krt19<sup>+</sup> bile duct epithelium.<sup>(31)</sup> Human periportal cells also label for octamer 3/4 (Oct3/4),  $\beta$ 2 spectrin ( $\beta$ 2SP), and TBRII in both human and mouse liver regeneration.<sup>(27,28,32)</sup> Through previous studies in human liver donor and liver transplant specimens that represent human liver regeneration, as well as fulminant hepatic failure, putative liver progenitor/stem cell expansion has been observed during massive hepatic necrosis with fibrosis as well as submassive hepatic necrosis with hepatocytic lineage. The observation of fibrosis in the



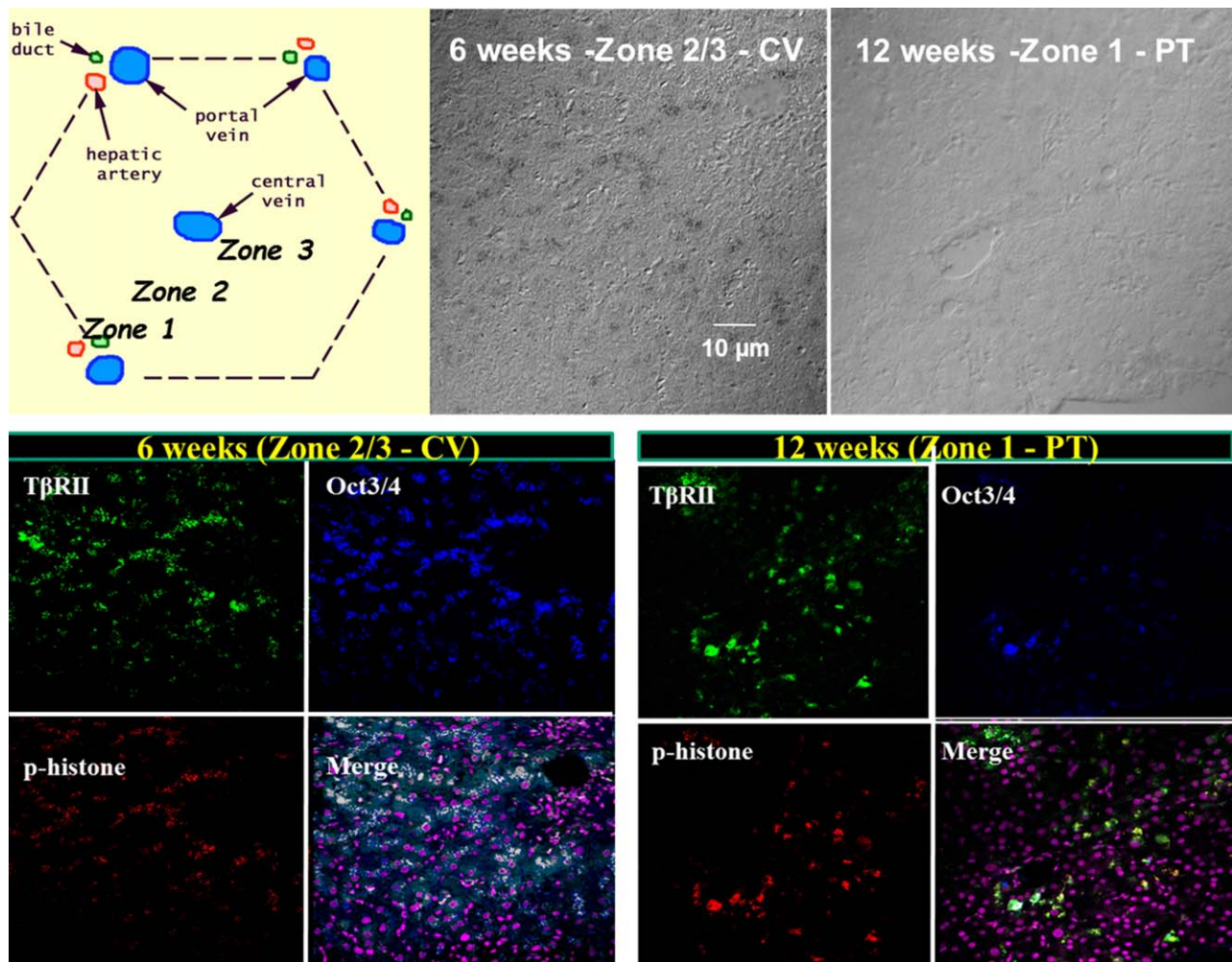
**FIG. 3.** TGF- $\beta$ /SMAD/CTCF signaling pathway. The flow chart demonstrates roles of the TGF- $\beta$ / $\beta$ 2SP/Smad3/CTCF signaling pathway in liver stem cell homeostasis and response to alcohol-induced injury and inflammation.

massive hepatic necrosis group may indicate aberrant TGF- $\beta$  signaling, which is not observed in the submassive necrosis group where a few hepatocytes are observed.<sup>(33)</sup> In human liver regeneration, liver progenitor/stem cells are observed along the pericentral vein early in regeneration (before 6 weeks following post transplantation), and later at the portal tracts ( $\geq 6$  weeks post transplantation)<sup>(28)</sup> (Fig. 4). Anti-Oct4 and Nanog are observed to label cells as early as the first 1-3 weeks, representing early liver regeneration.<sup>(28)</sup> These putative progenitor cells carry stem cell markers as well as TGF- $\beta$  markers, including TBR11 and  $\beta$ 2SP (TGF- $\beta$  component Smad3/4 adaptor). Although Smad3 is expressed ubiquitously, we found that the common mediator Smad4 is also expressed in this biliary region, perhaps signifying this population as “committed progenitor cells,” and suggesting that TGF- $\beta$  members play multiple and complex roles in liver stem cell function and in conferring the cell type. Future lineage tracing experiments will identify the cell populations responsible for liver regeneration following injury/damage in the context of TGF- $\beta$  signaling.

TGF- $\beta$ , as a pleiotropic cytokine, has been proven to be differentially involved in the regulation of multilineage differentiation of stem cells (Fig. 5), through cross-talk involving the Smad pathway, non-Smad pathways including MAP kinase pathways, PI3K/AKT pathways, and Rho-like GTPase signaling pathways. For instance, TGF- $\beta$  promotes the

differentiation of stem cells into smooth muscle cells,<sup>(34-37)</sup> chondrocytes,<sup>(38-40)</sup> neurocytes, hepatic stellate cells, Th17 cells, dendritic cells, and cardiomyocytes.<sup>(41)</sup> However, TGF- $\beta$  inhibits the differentiation of stem cells into myotubes,<sup>(42)</sup> adipocytes, endothelial cells, and natural killer cells.<sup>(41)</sup> Additionally, TGF- $\beta$  plays a critical role in bone remodeling and can provide competence for early stages of osteoblastic differentiation, but at late stages, TGF- $\beta$  acts as an inhibitor.<sup>(43,44)</sup> In embryonic stem cells (ESCs), another TGF- $\beta$  family member, bone morphogenetic protein (BMP4) is required for ESC self-renewal through a balanced inhibition of ESC lineage commitment. In mesenchymal stem cells, the BMP signal induces osteoblastic differentiation through Bmpr1b but inhibits osteoblastic differentiation through Bmpr1a.<sup>(45)</sup> BMP signaling inhibits stem cell activation and expansion in intestinal stem cells.<sup>(46)</sup> In hematopoietic stem cells, BMP signaling through Bmpr1a restricts stem cell number by controlling the niche size.<sup>(47)</sup> *In vitro* and *in vivo* studies have demonstrated that Activin/Nodal signaling maintains pluripotency in human pluripotent stem cells<sup>(48)</sup> and also in mouse epiblast stem cells.<sup>(49)</sup> Absence of Nodal signaling results in the loss of pluripotency markers and the gain of ectopic neuroectoderm marker expression in the epiblast immediately after implantation.<sup>(50,51)</sup> BMP4 through Smad1/5/8 and Activin/Nodal through Smad2/3 compete to modulate the expression





**FIG. 4.** In human liver regeneration, liver progenitor/stem cells are observed along the pericentral vein early in regeneration (before 6 weeks), and later at the portal tracts (after 6 weeks). As demonstrated colocalization of Oct3/4 and p-Histone, a marker of cell proliferation. Given that hepatocytes primarily drive liver regeneration after acute injury, it is likely that the Oct3/4 and AFP-positive cells are proliferating hepatocytes and expression of these stem cell markers reflects their stem cell-like nature. More importantly, however, Oct3/4 and p-Histone-positive cells also colocalize with  $\beta$ 2SP and TBRII at all times, as evidenced in the merged images, where white represents colocalization.

of key pluripotency markers such as Nanog.<sup>(52)</sup> Activin B and several other genes that are known to be involved in enhancing Activin signaling, such as Wwp2, S100A4, Sulf2, and Inhbb, are also known to be involved in self-renewal of hair follicle stem cells.<sup>(53)</sup> Recently, TRIM33 has been discovered to act as a signal transducer and direct mediator of transcription in the TGF- $\beta$  pathway in ESCs. Ligand activation of nodal/Activin receptors induces the formation of TRIM33-Smad2/3 and Smad4-Smad2/3 protein complexes.<sup>(54)</sup>

Several TGF- $\beta$  signaling components are tumor suppressors. Inactivation of at least one of these

components occurs in almost all gastrointestinal tumors.<sup>(17,55)</sup> For instance, TBRII is mutated in up to 30% of colon cancers,<sup>(56)</sup> TBRI is mutated in 15% of biliary cancers,<sup>(57-59)</sup> and SMAD4 is deleted in 40%-60% of pancreatic cancers and mutated in gastrointestinal cancer.<sup>(60)</sup> Loss of  $\beta$ 2SP is observed in human HCC.<sup>(14,61-63)</sup> Evidence from Smad4-knockout mice, which develop head and neck cancers, demonstrates a significant role for Smad4 in promoting genomic stability.<sup>(64)</sup> Another piece of evidence from studies of liver regeneration that implicates TGF- $\beta$  pathway in cancer involves vitamin D deficiency. Vitamin D supplementation is essential for TGF- $\beta$  pathway member expression

	Wnt/Axin	CD133	EpCam	Sox9	LGR5	TGF- $\beta$ , Smads/ $\beta$ 2SP
• <b>Mouse knockouts</b>	X	X	X	X	X	✓
• <b>Stem cell: self renewal, differentiated progeny</b>	✓	M✓	M✓	✓X	✓	✓
• <b>CSCs Tumors: self renew generate diverse cell type</b>	M✓	M✓	MX	X	✓	✓
• <b>Animal models, liver regeneration</b>	✓	✓	✓	X	✓	✓
• <b>Lineage studies</b>	✓	✓	✓	X	✓	X
• <b>Repopulation</b>	✓	X	X	X	✓	X
• <b>Human Liver Regeneration/Genetic Studies</b>	X	X	X	X	X	✓
• <b>Human Genomics</b>	✓	X	X	X	X	✓

**FIG. 5.** Summary of mouse knockout and lineage studies on candidate molecules in liver stem cells/cancer stem cells. Data were obtained from the Mouse Genome Informatics Database. Wnt/Axin: no liver phenotypes were observed, but 65 other phenotypes observed, including limb, kidney, and intestine.  $\beta$ -catenin: 341 phenotypes were also observed, including bone and intestinal abnormalities. No liver phenotypes were observed. CD133: phenotypes observed included retinitis pigmentosa and retinal degeneration (137). EpCam: no liver abnormalities were observed, but small intestinal and trophoblast abnormalities were observed. Sox9: No liver phenotypes were observed, but 184 other phenotypes were observed, including bone, pancreas, and eye abnormalities. LGR5: 12 phenotypes were observed, including intestinal abnormalities, distended abdomen and neonatal death. In contrast, TGF- $\beta$  members display definitive foregut-liver lineage and multiple liver cancer phenotypes. Smad4: 154 phenotypes were observed including ectoderm, mesoderm, no primitive foregut and multiple gastrointestinal cancers. Smad2/Smad3,  $\beta$ 2SP: multiple liver and gastrointestinal abnormalities, and cancers were observed. (M = marker).

levels.  $\beta$ -catenin activation in fibrotic/cirrhotic human liver tissues and vitamin D deficiency promotes tumor growth in the context of Smad3 disruption, potentially through the regulation of TLR7 expression and  $\beta$ -catenin activation. Whole genome and transcriptomic analyses of somatic mutations and alterations in genes involved in vitamin D metabolism, vitamin D-related genes, and the TGF- $\beta$  superfamily using The Cancer Genome Atlas database of 147 patients with liver cancer revealed positive correlation between inactivating somatic mutations for vitamin D-related genes and the TGF- $\beta$  pathway and plays a critical role in liver tumorigenesis.<sup>(65)</sup> In addition, TGF- $\beta$ 1 inhibits telomerase activity. Conversely, TGF- $\beta$ 1-induced arrest of cell growth can be overcome by the activation of human TERT, the protein catalytic subunit of telomerase.<sup>(66)</sup> Telomerase activation and maintenance is important for malignant transformation from normal cells.<sup>(67)</sup> Keratinocytes cultured from TGF- $\beta$ 1-null mice have marked genomic instability that could accelerate tumor progression.<sup>(68)</sup> More recently, studies have been conducted in Smad4 conditional knockout mice that develop head and neck cancers, where Smad4 has been postulated as a “guardian of the

genome” through regulation of the Fanconi anemia/Brca (Fanc/Brca) DNA repair pathway.<sup>(64,69)</sup> Interestingly, the development of HCCs in  $\beta$ 2SP heterozygote mutants establishes  $\beta$ 2SP as a nontraditional and functional tumor suppressor. Spectrins have been observed to associate with Fanconi proteins (G and D) as well as with DNA interstrand cross-links.<sup>(70,71)</sup> Similarly, by virtue of its involvement in Smad3/4 localization and subsequent activation of Smad3/4,  $\beta$ 2SP may enhance TGF- $\beta$  tumor suppressor function. Also, TGF- $\beta$ -deficient  $\beta$ 2SP mutant mice are highly susceptible to alcohol injury, marked by an abnormal response to DNA cross-linking repair. Taken together, these studies indicate TGF- $\beta$  as a potential processor of genomic stability through modulation of the Fanc pathway at interstrand crosslinks, yet clear mechanisms remain to be elucidated.

## TGF- $\beta$ in Liver Cancer Stem Cells

Pathways involved in stem cell transformation into gastrointestinal cancers remain largely undefined and a



**FIG. 6.** BWS is a human cancer stem cell overgrowth disorder with an estimated prevalence of 1 in 14,000. The syndrome includes heterogeneous features such as organomegaly and adrenal cytomegaly (a hallmark characteristic).  $Sptbn1^{+/-}/Smad3^{+/-}$  mice generated in the laboratory were phenocopies of BWS patients.  $Sptbn1^{+/-}/Smad3^{+/-}$  mice demonstrated microfacies and the classic metopic ridge frequently associated with human BWS and a high risk of cancers that include HCC.

- Overgrowth disorder: increased risk of a defined group of childhood and adult neoplasms (Liver, Kidney, Adrenals and others)
- **800 fold Cancer risk**
- **Range of liver problems from steatosis to liver cancer**
- Raised Levels of IGF2
- decreased p57
- Major rearrangements on 11p15.5
  
- Loss of imprinting of IGF2 (20% of cases)
- Altered methylation
- Loss-of-function alterations in the p57/CDKN1C gene
- Aberrant CTCF function
- **Disruption of TGF- $\beta$  signaling**

black box. A recent discovery reports that TGF- $\beta$ -deficient mutant mice closely resemble a cancer stem cell disorder, including characteristic ear abnormalities and adrenal cytomegaly. Beckwith-Wiedemann syndrome (BWS) is a human stem cell overgrowth disorder with an estimated prevalence of 1 in 14,000<sup>(72)</sup> (Fig. 6). The syndrome includes heterogeneous features such as organomegaly and adrenal cytomegaly (a hallmark characteristic)<sup>(73)</sup> (Fig. 7). BWS is associated with an 800-fold increased risk of childhood neoplasms, and can develop multiple tumor types within the same organ simultaneously, an example including the co-occurrence of a mesenchymal hamartoma, capillary hemangioma hepatoblastoma, and cholangiocarcinoma within the liver of one patient.<sup>(74,75)</sup> These events are suggestive of the multipotentiality of neoplastic transformation and imply dysfunctional processes as stem cells differentiate into mature adult cell types.<sup>(76)</sup> Mechanistic insight into downstream effector pathways which lead to stem cell transformation and an integrated analysis from mouse models to human

disease for BWS and associated cancers remain only partially defined.

These new studies demonstrate that TGF- $\beta$  induces chromatin insulator CCCTC-binding factor (CTCF) which facilitates TGF- $\beta$ -mediated repression of TERT transcription via interactions with  $\beta$ 2SP and SMAD3. This regulation is abrogated in TGF- $\beta$ -defective mice and BWS, resulting in TERT overexpression. Tert induction in  $Sptbn1^{+/-}/Smad3^{+/-}$  mouse embryonic fibroblasts suggests that dysregulated telomerase expression may be part of the molecular basis of tumor development in BWS patients. These results show that recruitment of the SMAD3/ $\beta$ 2SP/CTCF complex at the TERT promoter resulting in tumorigenesis is dependent on the TGF- $\beta$  signaling pathway.<sup>(14)</sup> Moreover, activation of the SMAD3/ $\beta$ 2SP/CTCF complex on the TERT promoter region may cooperate with MYC activation. MYC activation and telomerase dysfunction have been shown to play prominent roles in early HCC initiation.<sup>(77)</sup> Therefore, the TGF- $\beta$ -mediated  $\beta$ 2SP/SMAD3/CTCF complex



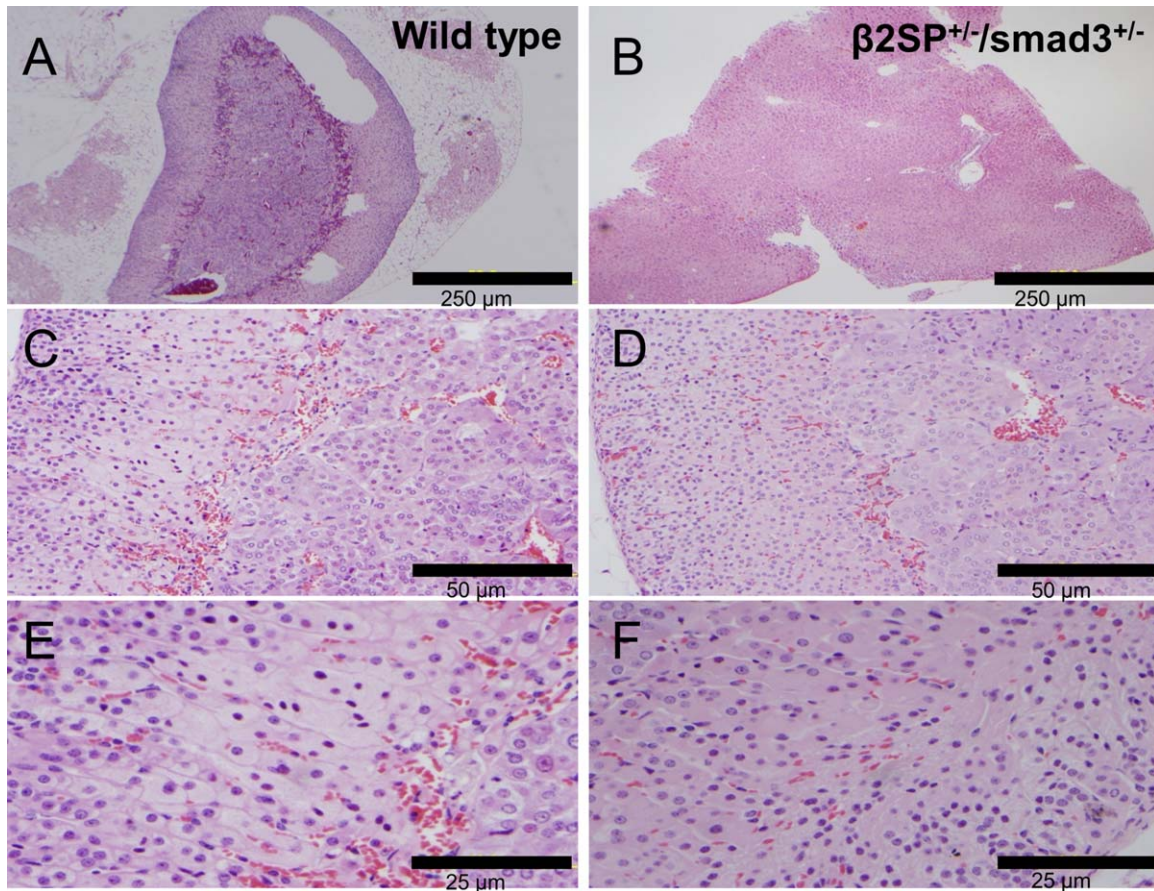


FIG. 7. Identification of cytomegaly of the fetal cortex of the adrenal glands in a  $\beta 2\text{SP}^{+/-}/\text{Smad3}^{+/-}$  mouse (B, D, F) compared with a wild-type mouse (A, C, E).

regulates telomerase activity and is part of a pathway that suppresses the switch to tumorigenesis in BWS-associated cancers. Identifying similar key mechanisms through such mouse models that reflect the human disease could lead to effective new treatment strategies.

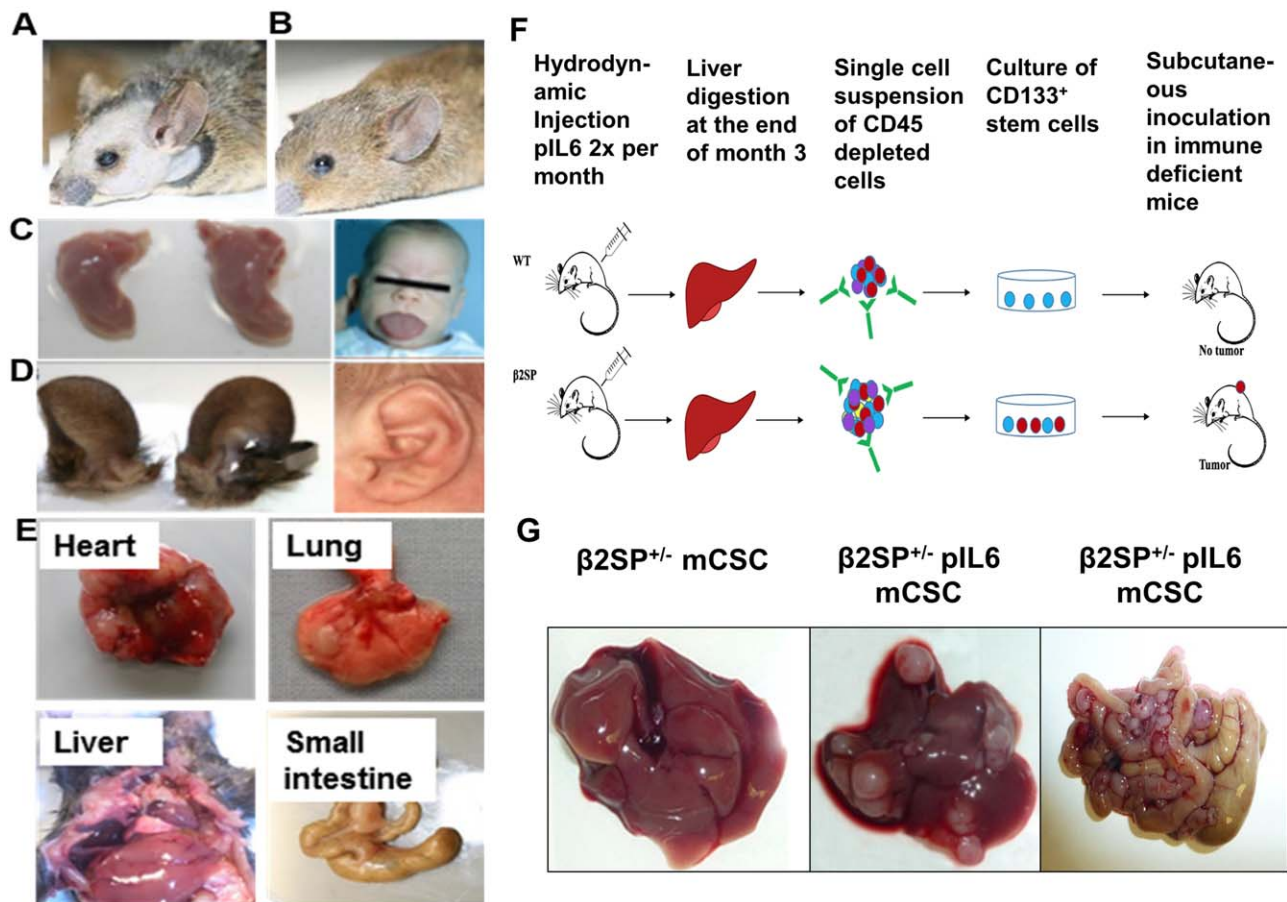
## TGF- $\beta$ in an Invasive Cancer Stem Cell Model

How chronic inflammation modulates stem cells and cancer remains only partially defined, and is another black box. Chronic inflammation, often associated with liver injury, leads to secretion of cytokines, chemokines, free radicals, and other DNA-damaging molecules, thereby changing the hepatic microenvironment.<sup>(78)</sup> Persistent inflammation during this long-term process leads to an expansion of hepatic stem and progenitor cells that accumulate genetic and epigenetic alterations.

Thus, the highly inflamed liver immune microenvironment is a major driver of the transformation of normal liver stem cells (LSCs) to highly metastatic cancer stem cells (CSCs).

Molecular mechanisms that link chronic inflammatory responses with tumor initiation have been studied extensively.<sup>(79,80)</sup> Among numerous proinflammatory factors, interleukin-6 (IL-6) is the most prominently elevated in almost 40% of liver cancer patients, suggesting that IL-6 is associated with HCC progression.<sup>(81-87)</sup> The TGF- $\beta$  pathway induced IL-6 secretion may confer chemotherapeutic resistance in HCC.<sup>(32)</sup> IL-6 is required for the priming of hepatocytes to leave their quiescent state (G0) and enter a prereplicative phase (G1), and transcriptionally up-regulates an array of genes during liver growth.<sup>(88)</sup> A recent study showed that signal transducer and activator of transcription 3 (STAT3), following its IL-6-mediated activation, binds to the promoter element of CD133 to induce





**FIG. 8.** Cancer stem cell models of HCC-TGF- $\beta$ , IL-6. (A)  $\beta$ 2SP<sup>+/-</sup>/Smad3<sup>+/-</sup> mouse phenocopy of BWS compared with (B) wild-type mouse. (C) Macroglossia and (D) abnormal anterior ear creases in  $\beta$ 2SP<sup>+/-</sup>/Smad3<sup>+/-</sup> mice and BWS patients. (E)  $\beta$ 2SP<sup>+/-</sup>/Smad3<sup>+/-</sup> mice spontaneously develop liver and gastrointestinal cancers by 12 months of age. (F) Schematic representation of chronic treatment with IL-6-induced cancer stem cells in  $\beta$ 2SP<sup>+/-</sup> mice. (G) Orthotopic invasive tumor development after stem cell inoculation shown in panel F.

HCC progression.<sup>(89)</sup> Liver cancer patients with high levels of CD133 expression have shorter overall survival and higher relapse rates than those with low levels of CD133 expression.<sup>(90)</sup> IL-6-mediated inflammation programs, constitutive activation of the TGF- $\beta$ -activated kinase 1 (TAK1)/nuclear factor kappa B (NF- $\kappa$ B) signaling cascade in CD133<sup>+</sup> LSCs, and this programming, interacts with deficient TGF- $\beta$  signaling, thereby accelerating the transformation of normal LSCs to metastatic CSCs.

CD133<sup>+</sup> LSCs derived from preneoplastic livers of TGF- $\beta$ -deficient  $\beta$ 2SP<sup>+/-</sup> mice treated with IL-6 were highly tumorigenic and metastatic and exhibited nuclear localization of Twist and Slug (markers of epithelial-mesenchymal transition) and constitutive activation of NF- $\kappa$ B<sup>(91)</sup> (Fig. 8). NF- $\kappa$ B was activated

by TAK1 (MAP3K7), which is associated with poor survival in HCC and IL-6 expression. Hepatocyte-specific deletion of TAK1 in mice activates the TGF- $\beta$  signaling pathway to induce spontaneous inflammation, fibrosis, and, eventually, hepatic tumorigenesis.<sup>(92)</sup> Overall, this reciprocal regulation between  $\beta$ 2SP and IL-6 in the programming of liver CSCs provides insight into the mechanism by which normal stem cells transform into EMT-positive CSCs.<sup>(93)</sup> Therefore, these studies demonstrate that there exists a reciprocal cross-talk between TGF- $\beta$  signaling and IL-6-driven inflammation in preneoplastic liver tissues and defining the mechanisms by which the loss of TGF- $\beta$ / $\beta$ 2SP regulates the transition of hepatic stem cells to cells with EMT phenotypes in an inflammation-driven hepatic immune environment.

Discovery of this mechanistic insight will improve modern therapeutic approaches to eliminate metastatic tumor stem cells at an early stage before tumor initiation and will shed new light on the black box of mechanisms of stem cell transformation. Furthermore, this discovery will provide a scientific basis for a specific targeted therapy of metastatic CSCs for preventing invasion, resistance, and relapse.

## The Phases of Liver Regeneration

In the adult liver, mature hepatocytes seldom proliferate and have a life span of over a year.<sup>(94)</sup> After partial hepatectomy, however, proliferation of the normally quiescent hepatocytes and cholangiocytes, followed by proliferation of the hepatic stellate cells and endothelial cells quickly restores the liver to its original mass. In the rodent model, DNA synthesis starts 12 to 16 hours after the standard partial hepatectomy (PHx) and peaks at 24–48 hours. The original organ mass is almost restored 3–7 days postresection, and by 3–4 months in humans.<sup>(95,96)</sup> Liver regeneration therefore represents an example of precisely controlled initiation and synchronized cell proliferation *in vivo*, in which normally quiescent hepatocytes exit G0, reenter the cell cycle, and undergo one or two rounds of replication, with restoration of liver mass and function.<sup>(94,97,98)</sup> The initiation step is characterized by priming of quiescent hepatocytes by factors such as tumor necrosis factor  $\alpha$  (TNF- $\alpha$ ), IL-6, and nitric oxide. These cytokines are released within minutes of partial hepatectomy from nonparenchymal liver cells and induce hepatocytes to synthesize further acute phase proteins—mainly protease inhibitors—through activation of hepatocyte DNA-binding proteins.<sup>(99,100)</sup> Therefore, more than 100 immediate early genes are activated by latent transcription factors at the transition between G0 and G1. For instance, within minutes, specific transcription factors such as NF- $\kappa$ B, STAT3, and AP1 are rapidly activated in remnant hepatocytes, as are intracellular signaling pathways such as mitogen-activated protein kinase, phosphorylated extracellular signal-regulated kinases, and Jun amino-terminal kinase.<sup>(101–103)</sup> The result is an induction of hepatocytes to become sensitive to growth factors and competent for replication.

The proliferation step arises when hepatocytes enter the cell cycle as G1 phase and are stimulated by complete mitogens including hepatocyte growth factor

(HGF). HGF increases 10- to 20-fold in the plasma within the first 3 hours after PHx and activates the HGF receptor cMet within 30–60 minutes.<sup>(104,105)</sup> Similarly, plasma concentration of TNF- $\alpha$ , IL-6, epidermal growth factor, and TGF- $\beta$ 1 increase within 1–2 hours after PHx. These hepatomitogens, together with co-mitogens such as norepinephrine and potentiating factors such as insulin, induce hepatocytes to override the mitogen restriction point at two-thirds of the G1 phase and progress into DNA synthesis. These factors induce cyclins and cyclin-dependent kinases that play critical roles in cell cycle progression.<sup>(106–108)</sup> Intracellularly,  $\beta$ -catenin and the Notch1 intracellular domain translocate to hepatocyte nuclei within 15–30 minutes, and enhanced activation of STAT3 and NF- $\kappa$ B within 1 hour contributes to activation of signaling pathways leading to cell cycle progression.

Cell cycle progression, regulated by the sequential formation, activation, and inactivation of complexes composed of cyclin-dependent kinases (Cdks) and cyclins proceeds in a synchronized pattern following PHx. In mid- to late G1, phosphorylation of the retinoblastoma protein by Cdk4/6-cyclin D complexes initiates the cell cycle and mediates the G1/S-phase transition.<sup>(109)</sup> Cdk2 then successively associates with cyclins E and A, completes phosphorylation of retinoblastoma protein, promotes activation of the DNA replication machinery, and regulates centrosome duplication, completing transition into S-phase. Cdk1, in association with cyclins A and B, is then essential for entry and exit from mitosis. Cyclin D1 has been shown to be activated by 6 hours and maximal levels of Cdk4 are present at 24 hours after PHx in rats.<sup>(110)</sup> Meanwhile, Cdk1 is sharply induced between 18 and 24 hours, followed by a transient decrease, before another increase at 30 hours post-PHx in rats.<sup>(111)</sup> Regeneration is complete, when an appropriate functional size is reached. TGF- $\beta$  plays a prominent role in this phase through inhibition of DNA synthesis in regenerating hepatocytes.

## Temporal and Spatial Fluctuations of TGF- $\beta$ Associated Members in Liver Regeneration: An Insight Into Their Function

TGF- $\beta$  signaling has been shown to reversibly inhibit the proliferative response following partial

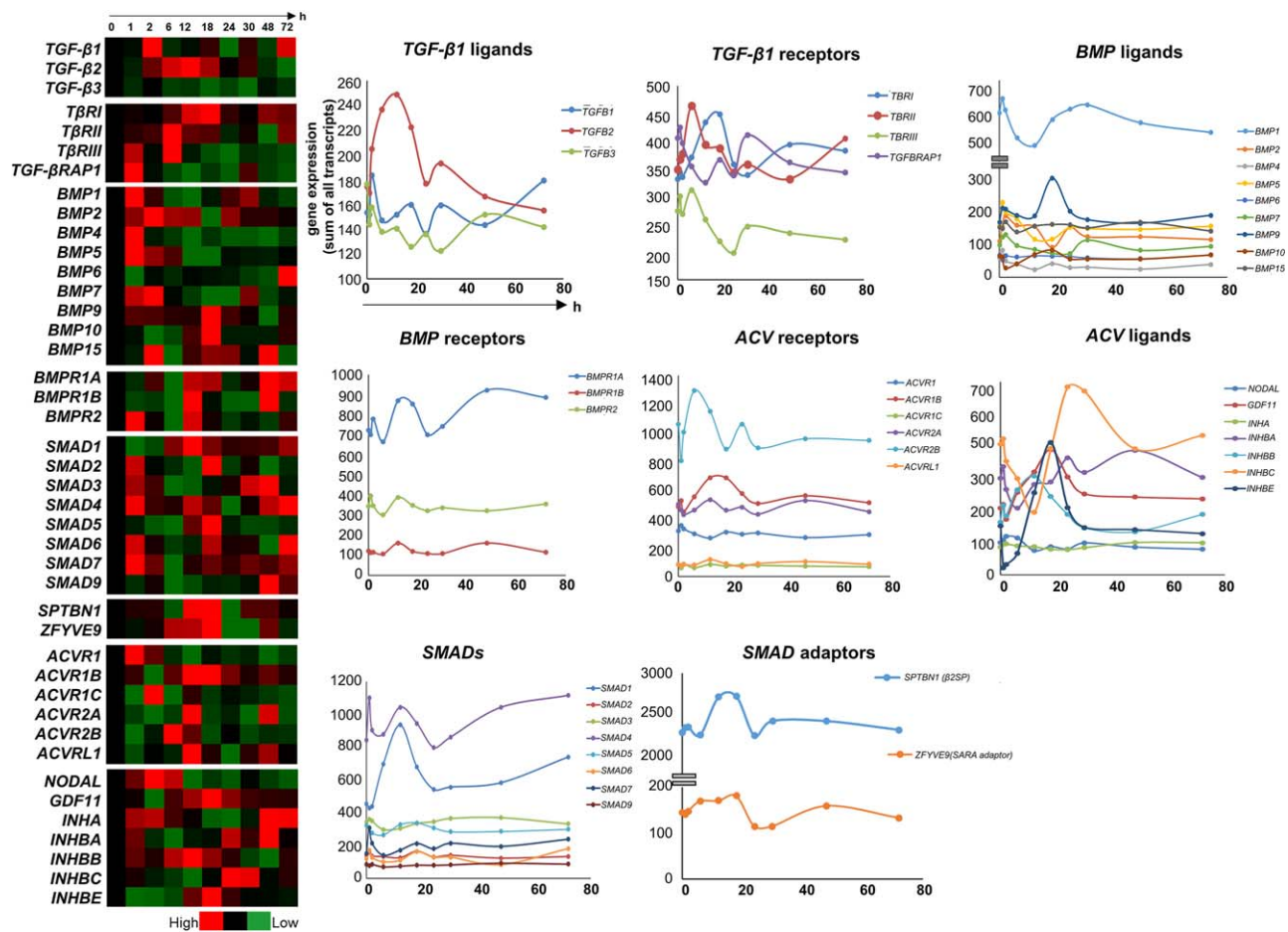


FIG. 9. TGF- $\beta$ -associated genes had a characteristic pattern of mRNA expression during a 72-hour period after PHx. Core TGF- $\beta$  pathway-related genes were evident in liver regeneration.

hepatectomy.<sup>(112)</sup> TGF- $\beta$ 1 levels are raised in the first 2 hours after PHx, and expression levels of downstream Smads, phospho-Smad2, Smad2, and Smad4 are similarly elevated.<sup>(95,113)</sup> Concomitant up-regulation of TGF- $\beta$  inhibitory proteins, SnoN and Ski, and a down-regulation of the TGF- $\beta$  receptors, allows hepatocytes to transition from G1 to S phase.<sup>(114)</sup> TBR2 conditional knockout mice demonstrate accelerated proliferation and an increased liver mass to body weight ratio after PHx.<sup>(115)</sup>

TGF- $\beta$  is primarily synthesized by stellate cells, a cell type that resides within the space of Disse (perisinusoidal space) in recesses between hepatocytes. There are approximately 2–20 stellate cells per 100 hepatocytes, and these are activated during liver injury and become myofibroblasts that produce extracellular matrix, leading to progression of fibrosis and liver

disease in the aberrant state. TGF- $\beta$  released from these stellate cells has a paracrine effect on hepatocytes. TGF- $\beta$  perturbations occur primarily in hepatocytes or stellate cells, depending on which cell type is dominantly undergoing proliferative changes after liver injury. Each isoform of TGF- $\beta$  has its own characteristic pattern of messenger RNA (mRNA) expression (which is assumed to have a high degree of correlation to secreted protein levels<sup>(116)</sup>) during a 72-hour period after PHx (Figs. 9 and 10).<sup>(116)</sup> The early phase of TGF- $\beta$ 1 expression (2- to 6-hour time point) precedes the major peak of hepatocyte growth, while the 48- to 72-hour time point coincides with the decrease in liver cell turnover.<sup>(116)</sup> The  $\beta$ 1 isoform has an early peak at 2 hours, but then decreases and spikes again between 48 and 72 hours in hepatocytes. This suggests that the  $\beta$ 1 isoform probably plays two different roles in liver



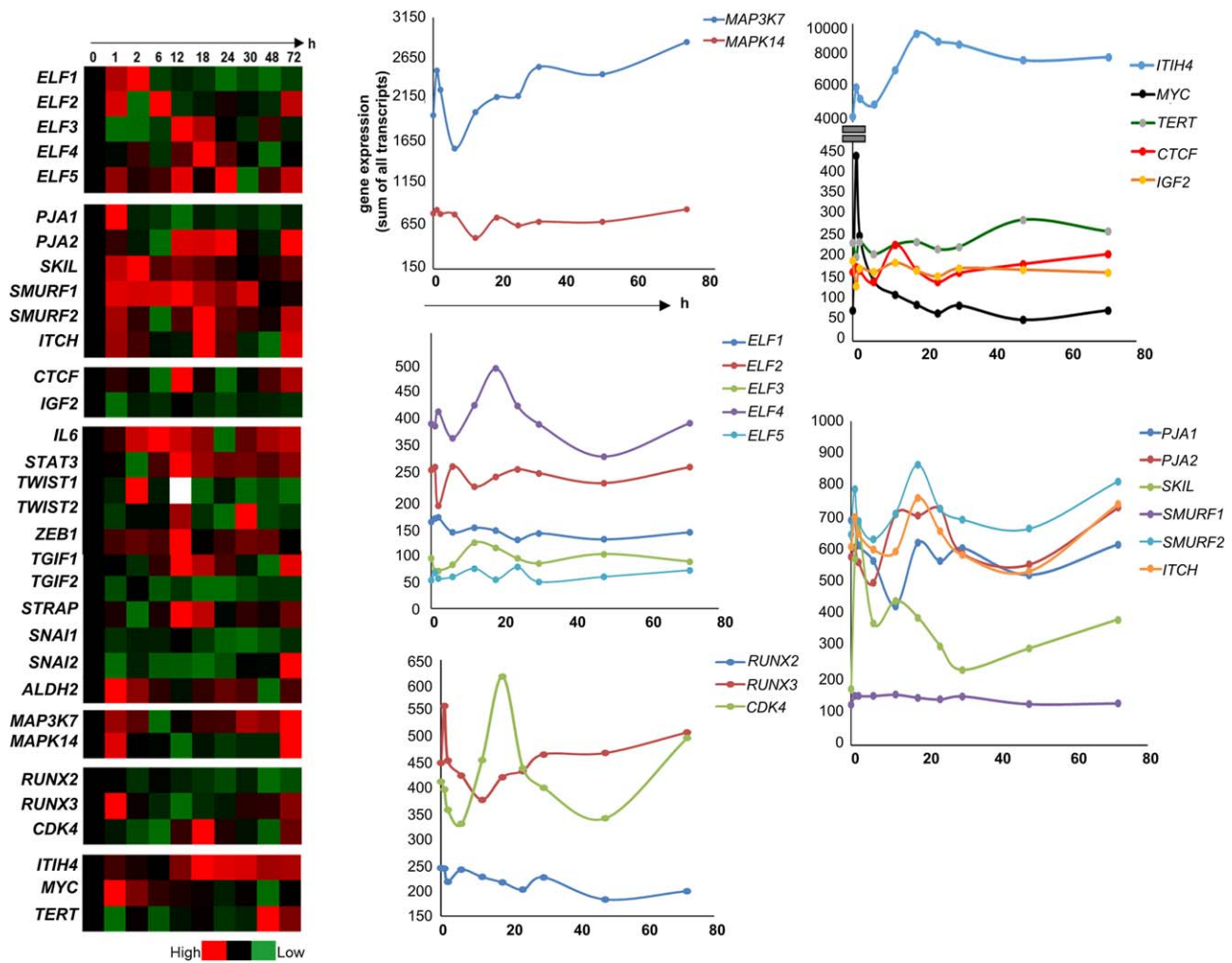


FIG. 10. mRNA expression of other TGF- $\beta$  pathway-related genes was evident in liver regeneration during a 72-hour period after PHx.

regeneration: a major role both during the initial phase as liver regeneration progresses to DNA synthesis, as well as role in the later, termination phase of liver regeneration after injury. The  $\beta 2$  isoform is increased in all liver cell types at hour 6, but at the later time point, the hepatocyte fraction shows a further increase, whereas the nonparenchymal cell fractions decline. The  $\beta 3$  isoform shows major increases in all cell fractions at the early time point, but only the hepatocyte fraction maintains this increase at the later time point.<sup>(116,117)</sup>

Levels of TBRI and TBRII involved in TGF- $\beta$  signaling are decreased in the early liver regeneration phase while TBRIII and TGF- $\beta$ RAP1/TRAP1 which are known to be inhibitors of TGF- $\beta$  signaling<sup>(118,119)</sup>

are elevated. These expression levels are reversed in correlation to TGF- $\beta$  peaks in the 6- and 72-hour phases. Bone morphogenetic proteins (BMPs) are members of the TGF- $\beta$  family and act as constitutively expressed repressors of regeneration. Consistent with this hypothesis, BMPs are expressed in the initial phase within 2 hours and then down-regulated as TGF- $\beta$  spikes.<sup>(116,120)</sup> In the normal liver, strong BMP2 expression is observed around the central and portal veins. The observed down-regulation of BMP2 in rat liver following partial hepatectomy suggests that such down-regulation may be necessary for hepatocyte proliferation.<sup>(121)</sup> Mice driven to maintain BMP4 expression in the liver, display inhibited hepatocyte proliferation and restoration of liver mass after

hepatectomy, suggesting that reduced BMP4 is necessary for normal regeneration.<sup>(120)</sup> Consistent with this finding, the BMP receptors also follow an inverse pattern of up-regulation compared with TGF- $\beta$  activation and are mostly up-regulated in the anti-proliferative/termination phase.<sup>(116)</sup>

Hepatocyte-specific deletion of the BMP receptor Activin receptor-like kinase 3 enhances regeneration.<sup>(120)</sup> The BMP4 antagonist Noggin has also been reported to enhance regeneration. BMP7 expression is absent in liver; however, neutralization of circulating endogenous BMP7 results in significantly impaired regeneration of the liver after partial hepatectomy, whereas therapeutic administration of recombinant human BMP7 significantly enhances liver regeneration. BMP9 stimulation of cultured hepatocytes inhibited proliferation. Constitutive expression of low levels of BMP9 stabilizes hepatocyte function in the healthy liver. Acute liver injury caused by partial hepatectomy results in transient down-regulation of hepatic BMP9 mRNA expression and following HSC activation, endogenous BMP9 levels again increase.<sup>(122)</sup> Regulation of Activin signaling through receptors is another major factor determining liver regeneration after liver injury. Activins inhibit DNA synthesis in hepatocytes and Activin and their receptors are initially down-regulated and later induced between 24 and 72 hours after the proliferation slows down.<sup>(123)</sup> Likewise, Inhibins which have biological effects directly opposite to those of Activins are induced in the initial phase, down-regulated when Activins are up-regulated, and elevated again in the later phase when activin expression is reduced.<sup>(116)</sup>

Smad proteins are intracellular effectors of TGF- $\beta$  signaling and transduce signals from TGF- $\beta$  superfamily ligands that regulate cell proliferation, differentiation and death through activation of receptor serine/threonine kinases. Partial hepatectomy stimulates a strong regenerative response with elevated expression of Smad2/3 phosphorylation in the first 2 hours followed by IL-6, TNF- $\alpha$ , and STAT3 induction 24 hours post-PHx in both hepatocytes and nonparenchymal cells.<sup>(116,124)</sup> Smad3 deficiency leads to reduced hepatocyte proliferation 42 hours post-PHx, a process that correlated with and was preceded by significant reductions in IL-6 expression and STAT3 phosphorylation. STAT3, upon activation by a number of factors including IL-6, regulates cell survival and proliferation and liver regeneration and loss of STAT3 in hepatocytes reduces their proliferation early during regeneration after PHx.<sup>(125,126)</sup>

Among the other SMADs, suppression of SMAD1, SMAD5, and SMAD9 is known to repress liver

regeneration.<sup>(127)</sup> SMAD6 inhibits Wnt/ $\beta$ -catenin signaling and suppresses the growth and self-renewal of hepatic progenitor cells.<sup>(128)</sup> Adaptors such as  $\beta$ 2 spectrin ( $\beta$ 2SP) are involved in hepatocyte proliferation through the interaction of TGF- $\beta$ /Smad and PI3K/AKT signaling.<sup>(129)</sup>  $\beta$ 2SP deficiency results in dysfunctional hepatocyte cell cycle progression and delayed liver regeneration at 48 hours after PHx. This defect is mediated by dysfunctional expression of cell cycle proteins and by increased DNA damage.<sup>(27)</sup> Spatial and temporal expansion of TBRI and  $\beta$ 2SP expression occurs as regeneration proceeds. TBRI and  $\beta$ 2SP expression increases gradually in the initial phase, until approximately 18 hours after hepatic injury, and then decreases.<sup>(116)</sup> The spatial expansion of TBRI and  $\beta$ 2SP proceeds from periportal to pericentral areas of lobules, suggesting an important role for the TGF- $\beta$  signaling molecules in liver regeneration in response to liver injury.<sup>(28)</sup> An interesting transition between PRAJA (PJA1), an E3-dependent ubiquitin ligase of  $\beta$ 2SP, and  $\beta$ 2SP proteins, occurs at 6 hours postinjury, with expression of PJA1, and  $\beta$ 2SP predictably inversely proportional to each other. At 6 hours, PJA1 levels begin to decrease, allowing the up-regulation of  $\beta$ 2SP on a background of TGF- $\beta$  expression, which is already high compared with expression in normal liver. As PJA1 expression continues to decrease over 6-12 hours postinjury,  $\beta$ 2SP remains accumulated in the cells.<sup>(130)</sup> Potentially targeting similar E3 ligases that are activated in the setting of loss of TGF- $\beta$  tumor suppressor activity, could provide attractive new therapeutics for HCC.

Serial transplantation experiments have shown that hepatocytes have a near infinite capacity to proliferate.<sup>(94,131,132)</sup> When mature hepatocytes and cholangiocytes are damaged or inhibited in their replication, however, a reserve compartment of hepatic progenitor cells are activated.<sup>(133)</sup> In human liver donor transplant recipients, early on within the first 6 weeks, expansion of cells expressing stem cell markers Oct3/4, AFP, and TGF- $\beta$  members is observed in zone 1, zone 2,<sup>(28)</sup> and surprisingly also zone 3 (central vein)<sup>(134-136)</sup> and appears to give rise to hepatocytes. These studies suggest that in submassive hepatic necrosis with intact zones 1 and 2, cells express stem cell markers and potentially lead the regenerative process.<sup>(28,33)</sup> The activation of the stem cell compartment, originally referred to as a "ductular reaction" in humans and "oval cell reaction" in rodents, is observed in circumstances of prolonged necrosis, cirrhosis, and chronic inflammatory liver diseases. In summary, rodent studies have led

to the identification of the three stem cell compartments displayed by markers of the Wnt/Axin/Lgr5 family, EpCam, and CD133. Yet mouse mutants of the single gene knockouts do not reveal significant liver pathology (Fig. 5). Mouse knockouts, human liver regeneration, and functional studies thus reveal a pivotal role for TGF- $\beta$  in suppressing cancer stem cells, as well as modulating processes of liver regeneration and fibrosis.<sup>(27,28)</sup> However, exactly how it is defined temporally with existing stem cell markers such as Axin1, Lgr5, Fancd2, and CD133 remains to be explored. Importantly, the studies provide a key role for the TGF- $\beta$  pathway in suppressing cancer stem cells, and the loss of TGF- $\beta$  signaling in these cells could lead to better identification of these cells, as well as prediction of tumor behavior and ultimately lead to precise targeting of cancer stem cells in this lethal cancer.

## REFERENCES

- 1) Siegel R, Ma J, Zou Z, Jemal A. Cancer statistics, 2014. *CA Cancer J Clin* 2014;64:9-29.
- 2) White DL, Thrift AP, Kanwal F, Davila J, El-Serag HB. Incidence of hepatocellular carcinoma in all 50 United States, from 2000 through 2012. *Gastroenterology* 2017;152:812-820.
- 3) Hepatocellular carcinoma. *Nat Rev Dis Primers* 2016;2:16019.
- 4) Ferlay J, Soerjomataram I, Dikshit R, Eser S, Mathers C, Rebelo M, Parkin DM, et al. Cancer incidence and mortality worldwide: sources, methods and major patterns in GLOBOCAN 2012. *Int J Cancer* 2015;136:E359-E86.
- 5) Totoki Y, Tatsuno K, Covington KR, Ueda H, Creighton CJ, Kato M, Tsuji S, et al. Trans-ancestry mutational landscape of hepatocellular carcinoma genomes. *Nat Genet* 2014;46:1267-1273.
- 6) Llovet JM, Villanueva A, Lachenmayer A, Finn RS. Advances in targeted therapies for hepatocellular carcinoma in the genomic era. *Nat Rev Clin Oncol* 2015;12:408-424.
- 7) Li S, Mao M. Next generation sequencing reveals genetic landscape of hepatocellular carcinomas. *Cancer Lett* 2013;340:247-253.
- 8) Li M, Zhao H, Zhang X, Wood LD, Anders RA, Choti MA, Pawlik TM, et al. Inactivating mutations of the chromatin remodeling gene ARID2 in hepatocellular carcinoma. *Nat Genet* 2011;43:828-829.
- 9) Guichard C, Amaddeo G, Imbeaud S, Ladeiro Y, Pelletier L, Maad IB, Calderaro J, et al. Integrated analysis of somatic mutations and focal copy-number changes identifies key genes and pathways in hepatocellular carcinoma. *Nat Genet* 2012;44:694-698.
- 10) Fujimoto A, Totoki Y, Abe T, Boroevich KA, Hosoda F, Nguyen HH, Aoki M, et al. Whole-genome sequencing of liver cancers identifies etiological influences on mutation patterns and recurrent mutations in chromatin regulators. *Nat Genet* 2012;44:760-764.
- 11) Clevers H, Nusse R. Wnt/beta-catenin signaling and disease. *Cell* 2012;149:1192-1205.
- 12) Chiang DY, Villanueva A, Hoshida Y, Peix J, Newell P, Minguez B, LeBlanc AC, et al. Focal gains of VEGFA and molecular classification of hepatocellular carcinoma. *Cancer Res* 2008;68:6779-6788.
- 13) Mishra L, Derynck R, Mishra B. Transforming growth factor-beta signaling in stem cells and cancer. *Science* 2005;310:68-71.
- 14) Chen J, Yao ZX, Chen JS, Gi YJ, Munoz NM, Kundra S, Herlong HF, et al. TGF-beta/beta2-spectrin/CTCF-regulated tumor suppression in human stem cell disorder Beckwith-Wiedemann syndrome. *J Clin Invest* 2016;126:527-542.
- 15) Katz LH, Likhter M, Jogunoori W, Belkin M, Ohshiro K, Mishra L. TGF-beta signaling in liver and gastrointestinal cancers. *Cancer Lett* 2016;379:166-172.
- 16) National Cancer Institute Surveillance, Epidemiology and End Results (SEER) Program. Cancer stat facts: liver and intrahepatic bile duct cancer. <https://seer.cancer.gov/statfacts/html/livibd.html>. 2016. Accessed June 20, 2017.
- 17) Majumdar A, Curley SA, Wu X, Brown P, Hwang JP, Shetty K, Yao ZX, et al. Hepatic stem cells and transforming growth factor beta in hepatocellular carcinoma. *Nat Rev Gastroenterol Hepatol* 2012;9:530-538.
- 18) Bruix J, Reig M, Sherman M. Evidence-based diagnosis, staging, and treatment of patients with hepatocellular carcinoma. *Gastroenterology* 2016;150:835-853.
- 19) Massague J, Blain SW, Lo RS. TGFbeta signaling in growth control, cancer, and heritable disorders. *Cell* 2000;103:295-309.
- 20) Chen J, Raju GS, Jogunoori W, Menon V, Majumdar A, Chen JS, Gi YJ, et al. Mutational profiles reveal an aberrant TGF-beta-CEA regulated pathway in colon adenomas. *PLoS One* 2016;11:e0153933.
- 21) Shi Y, Massague J. Mechanisms of TGF-beta signaling from cell membrane to the nucleus. *Cell* 2003;113:685-700.
- 22) Moses HL, Serra R. Regulation of differentiation by TGF-beta. *Curr Opin Genet Dev* 1996;6:581-586.
- 23) Zawel L, Dai JL, Buckhaults P, Zhou S, Kinzler KW, Vogelstein B, Kern SE. Human Smad3 and Smad4 are sequence-specific transcription activators. *Mol Cell* 1998;1:611-617.
- 24) Shi Y, Wang YF, Jayaraman L, Yang H, Massague J, Pavletich NP. Crystal structure of a Smad MH1 domain bound to DNA: insights on DNA binding in TGF-beta signaling. *Cell* 1998;94:585-594.
- 25) Wu, G, Chen YG, Ozdamar B, Gyuricza CA, Chong PA, Wrana JL, Massague J, et al. Structural basis of Smad2 recognition by the Smad anchor for receptor activation. *Science* 2000;287:92-97.
- 26) Tsukazaki T, Chiang TA, Davison AF, Attisano L, Wrana JL. SARA, a FYVE domain protein that recruits Smad2 to the TGFbeta receptor. *Cell* 1998;95:779-791.
- 27) Thenappan A, Shukla V, Abdul Khalek FJ, Li Y, Shetty K, Liu P, Li L, et al. Loss of transforming growth factor beta adaptor protein beta-2 spectrin leads to delayed liver regeneration in mice. *Hepatology* 2011;53:1641-1650.
- 28) Thenappan A, Li Y, Kitisin K, Rashid A, Shetty K, Johnson L, Mishra L. Role of transforming growth factor beta signaling and expansion of progenitor cells in regenerating liver. *Hepatology* 2010;51:1373-1382.
- 29) Wang B, Zhao L, Fish M, Logan CY, Nusse R. Self-renewing diploid Axin2(+) cells fuel homeostatic renewal of the liver. *Nature* 2015;524:180-185.
- 30) Huch M, Dorrell C, Boj SF, van Es JH, Li VS, van de Wetering M, Sato T, et al. In vitro expansion of single Lgr5 + liver stem cells induced by Wnt-driven regeneration. *Nature* 2013;494:247-250.



- 31) Zhu L, Finkelstein D, Gao C, Shi L, Wang Y, Lopez-Terrada D, Wang K, et al. Multi-organ mapping of cancer risk. *Cell* 2016;166:1132-1146.
- 32) Tang Y, Kitisin K, Jogunoori W, Li C, Deng CX, Mueller SC, Resson HW, et al. Progenitor/stem cells give rise to liver cancer due to aberrant TGF-beta and IL-6 signaling. *Proc Natl Acad Sci U S A* 2008;105:2445-2450.
- 33) Nissim O, Melis M, Diaz G, Kleiner DE, Tice A, Fantola G, Zamboni F, et al. Liver regeneration signature in hepatitis B virus (HBV)-associated acute liver failure identified by gene expression profiling. *PLoS One* 2012;7:e49611.
- 34) Kinner B, Zaleskas JM, Spector M. Regulation of smooth muscle actin expression and contraction in adult human mesenchymal stem cells. *Exp Cell Res* 2002;278:72-83.
- 35) Gojo S, Gojo N, Takeda Y, Mori T, Abe H, Kyo S, Hata J, et al. In vivo cardiovascularogenesis by direct injection of isolated adult mesenchymal stem cells. *Exp Cell Res* 2003;288:51-59.
- 36) Tamama K, Sen CK, Wells A. Differentiation of bone marrow mesenchymal stem cells into the smooth muscle lineage by blocking ERK/MAPK signaling pathway. *Stem Cells Dev* 2008;17:897-908.
- 37) Vo E, Hanjaya-Putra D, Zha Y, Kusuma S, Gerecht S. Smooth-muscle-like cells derived from human embryonic stem cells support and augment cord-like structures in vitro. *Stem Cell Rev* 2010;6:237-247.
- 38) Kim HJ, Kim YJ, Im GI. Is continuous treatment with transforming growth factor-beta necessary to induce chondrogenic differentiation in mesenchymal stem cells? *Cells Tissues Organs* 2009;190:1-10.
- 39) Kawamura K, Chu CR, Sobajima S, Robbins PD, Fu FH, Izzo NJ, Niyibizi C. Adenoviral-mediated transfer of TGF-beta1 but not IGF-1 induces chondrogenic differentiation of human mesenchymal stem cells in pellet cultures. *Exp Hematol* 2005;33:865-872.
- 40) Solorio LD, Fu AS, Hernandez-Irizarry R, Alsberg E. Chondrogenic differentiation of human mesenchymal stem cell aggregates via controlled release of TGF-beta1 from incorporated polymer microspheres. *J Biomed Mater Res A*, 2010;92:1139-1144.
- 41) Wang MK, Sun HQ, Xiang YC, Jiang F, Su YP, Zou ZM. Different roles of TGF-beta in the multi-lineage differentiation of stem cells. *World J Stem Cells* 2012;4:28-34.
- 42) Massague J. The transforming growth factor-beta family. *Annu Rev Cell Biol* 1990;6:597-641.
- 43) Bonewald LF, Mundy GR. Role of transforming growth factor-beta in bone remodeling. *Clin Orthop Relat Res* 1990:261-276.
- 44) Karsdal MA, Hjorth P, Henriksen K, Kirkegaard T, Nielsen KL, Lou H, Delaisse JM, et al. Transforming growth factor-beta controls human osteoclastogenesis through the p38 MAPK and regulation of RANK expression. *J Biol Chem* 2003;278:44975-44987.
- 45) Chen D, Ji X, Harris MA, Feng JQ, Karsenty G, Celeste AJ, Rosen V, et al. Differential roles for bone morphogenetic protein (BMP) receptor type IB and IA in differentiation and specification of mesenchymal precursor cells to osteoblast and adipocyte lineages. *J Cell Biol* 1998;142:295-305.
- 46) He XC, Zhang J, Tong WG, Tawfik O, Ross J, Scoville DH, Tian Q, et al. BMP signaling inhibits intestinal stem cell self-renewal through suppression of Wnt-beta-catenin signaling. *Nat Genet* 2004;36:1117-1121.
- 47) Zhang J, Niu C, Ye L, Huang H, He X, Tong WG, Ross J, et al. Identification of the haematopoietic stem cell niche and control of the niche size. *Nature* 2003;425:836-841.
- 48) Vallier L, Reynolds D, Pedersen RA. Nodal inhibits differentiation of human embryonic stem cells along the neuroectodermal default pathway. *Dev Biol* 2004;275:403-421.
- 49) Brons IG, Smithers LE, Trotter MW, Rugg-Gunn P, Sun B, Chuva de Sousa Lopes SM, Howlett SK, et al. Derivation of pluripotent epiblast stem cells from mammalian embryos. *Nature* 2007;448:191-195.
- 50) Camus A, Perea-Gomez A, Moreau A, Collignon J. Absence of Nodal signaling promotes precocious neural differentiation in the mouse embryo. *Dev Biol* 2006;295:743-755.
- 51) Mesnard D, Guzman-Ayala M, Constam DB. Nodal specifies embryonic visceral endoderm and sustains pluripotent cells in the epiblast before overt axial patterning. *Development* 2006;133:2497-2505.
- 52) Xu RH, Sampsel-Barron TL, Gu F, Root S, Peck RM, Pan G, Yu J, et al. NANOG is a direct target of TGFbeta/activin-mediated SMAD signaling in human ESCs. *Cell Stem Cell* 2008;3:196-206.
- 53) Kadaja M, Keyes BE, Lin M, Pasolli HA, Genander M, Polak L, Stokes N, et al. SOX9: a stem cell transcriptional regulator of secreted niche signaling factors. *Genes Dev* 2014;28:328-341.
- 54) Xi Q, Wang Z, Zaromytidou AI, Zhang XH, Chow-Tsang LF, Liu JX, Kim H, et al. A poised chromatin platform for TGF-beta access to master regulators. *Cell* 2011;147:1511-1524.
- 55) Bhowmick NA, Chytil A, Plith D, Gorska AE, Dumont N, Shappell S, Washington MK, et al. TGF-beta signaling in fibroblasts modulates the oncogenic potential of adjacent epithelia. *Science* 2004;303:848-851.
- 56) Markowitz S, Wang J, Myeroff L, Parsons R, Sun L, Lutterbaugh J, Fan RS, et al. Inactivation of the type II TGF-beta receptor in colon cancer cells with microsatellite instability. *Science* 1995;268:1336-1338.
- 57) Schlitter AM, Born D, Bettstetter M, Specht K, Kim-Fuchs C, Riener MO, Jeliakova P, et al. Intraductal papillary neoplasms of the bile duct: stepwise progression to carcinoma involves common molecular pathways. *Mod Pathol* 2014;27:73-86.
- 58) Schwetz V, Uhrig S, Spuller E, Deutschmann A, Hogenauer C. Manifestations of juvenile polyposis syndrome in SMAD4 mutation carriers of a kindred. *Eur J Gastroenterol Hepatol* 2012;24:988-994.
- 59) Ong CK, Subimerb C, Pairojkul C, Wongkham S, Cutcutache I, Yu W, McPherson JR, et al. Exome sequencing of liver fluke-associated cholangiocarcinoma. *Nat Genet* 2012;44:690-693.
- 60) Takeda H, Rust AG, Ward JM, Yew CC, Jenkins NA, Copeland NG. Sleeping Beauty transposon mutagenesis identifies genes that cooperate with mutant Smad4 in gastric cancer development. *Proc Natl Acad Sci U S A*. 2016;113:E2057-E2065.
- 61) Yao ZX, Jogunoori W, Choufani S, Rashid A, Blake T, Yao W, Kreishman P, et al. Epigenetic silencing of beta-spectrin, a TGF-beta signaling/scaffolding protein in a human cancer stem cell disorder: Beckwith-Wiedemann syndrome. *J Biol Chem* 2010;285:36112-36120.
- 62) Tang Y, Katuri V, Dillner A, Mishra B, Deng CX, Mishra L. Disruption of transforming growth factor-beta signaling in ELF beta-spectrin-deficient mice. *Science* 2003;299:574-577.
- 63) Kitisin K, Ganesan N, Tang Y, Jogunoori W, Volpe EA, Kim SS, Katuri V, et al. Disruption of transforming growth factor-beta signaling through beta-spectrin ELF leads to hepatocellular cancer through cyclin D1 activation. *Oncogene* 2007;26:7103-7110.
- 64) Bornstein S, White R, Malkoski S, Oka M, Han G, Cleaver T, Reh D, et al. Smad4 loss in mice causes spontaneous head and

- neck cancer with increased genomic instability and inflammation. *J Clin Invest* 2009;119:3408-3419.
- 65) Chen J, Katz LH, Munoz NM, Gu S, Shin JH, Jogunoori WS, Lee MH, et al. Vitamin D deficiency promotes liver tumor growth in transforming growth factor-beta/Smad3-deficient mice through Wnt and Toll-like receptor 7 pathway modulation. *Sci Rep* 2016;6:30217.
  - 66) Stampfer MR, Garbe J, Levine G, Lichtsteiner S, Vasserot AP, Yaswen P. Expression of the telomerase catalytic subunit, hTERT, induces resistance to transforming growth factor beta growth inhibition in p16INK4A(-) human mammary epithelial cells. *Proc Natl Acad Sci U S A* 2001;98:4498-4503.
  - 67) Cong Y, Shay JW. Actions of human telomerase beyond telomeres. *Cell Res* 2008;18:725-732.
  - 68) Glick A, Popescu N, Alexander V, Ueno H, Bottinger E, Yuspa SH. Defects in transforming growth factor-beta signaling cooperate with a Ras oncogene to cause rapid aneuploidy and malignant transformation of mouse keratinocytes. *Proc Natl Acad Sci U S A*, 1999;96:14949-14954.
  - 69) Korc M. Smad4: gatekeeper gene in head and neck squamous cell carcinoma. *J Clin Invest* 2009;119:3208-3211.
  - 70) Oberbeck N, Langevin F, King G, de Wind N, Crossan GP, Patel KJ. Maternal aldehyde elimination during pregnancy preserves the fetal genome. *Mol Cell* 2014;55:807-817.
  - 71) Langevin F, Crossan GP, Rosado IV, Arends MJ, Patel KJ. Fancd2 counteracts the toxic effects of naturally produced aldehydes in mice. *Nature* 2011;475:53-58.
  - 72) Pettenati MJ, Haines JL, Higgins RR, Wappner RS, Palmer CG, Weaver DD. Wiedemann-Beckwith syndrome: presentation of clinical and cytogenetic data on 22 new cases and review of the literature. *Hum Genet* 1986;74:143-154.
  - 73) Weksberg R, Shuman C, Beckwith JB. Beckwith-Wiedemann syndrome. *Eur J Hum Genet* 2010;18:8-14.
  - 74) Hadzic N, Finegold MJ. Liver neoplasia in children. *Clin Liver Dis* 2011;15:443-462.
  - 75) Keller RB, Demellawy DE, Quaglia A, Finegold M, Kapur RP. Methylation status of the chromosome arm 19q MicroRNA cluster in sporadic and androgenetic-biparental mosaicism-associated hepatic mesenchymal hamartoma. *Pediatr Dev Pathol* 2015;18:218-227.
  - 76) Feinberg AP, Ohlsson R, Henikoff S. The epigenetic progenitor origin of human cancer. *Nat Rev Genet* 2006;7:21-33.
  - 77) Sharpless NE, DePinho RA. Telomeres, stem cells, senescence, and cancer. *J Clin Invest* 2004;113:160-168.
  - 78) Yamashita T, Wang XW. Cancer stem cells in the development of liver cancer. *J Clin Invest* 2013;123:1911-1918.
  - 79) Schneider C, Teufel A, Yevsa T, Staib F, Hohmeyer A, Walenda G, Zimmermann HW, et al. Adaptive immunity suppresses formation and progression of diethylnitrosamine-induced liver cancer. *Gut* 2012;61:1733-1743.
  - 80) Wolf MJ, Adili A, Piotrowitz K, Abdullah Z, Boege Y, Stemmer K, Ringelhan M, et al. Metabolic activation of intrahepatic CD8 + T cells and NKT cells causes nonalcoholic steatohepatitis and liver cancer via cross-talk with hepatocytes. *Cancer Cell* 2014;26:549-564.
  - 81) Wan S, Zhao E, Kryczek I, Vatan L, Sadovskaya A, Ludema G, Simeone DM, et al. Tumor-associated macrophages produce interleukin 6 and signal via STAT3 to promote expansion of human hepatocellular carcinoma stem cells. *Gastroenterology* 2014;147:1393-1404.
  - 82) Chang TS, Wu YC, Chi CC, Su WC, Chang PJ, Lee KF, Tung TH, et al. Activation of IL6/IGFIR confers poor prognosis of HBV-related hepatocellular carcinoma through induction of OCT4/NANOG expression. *Clin Cancer Res* 2015;21:201-210.
  - 83) Hatting M, Spannbauser M, Peng J, Al Masaoudi M, Sellge G, Nevzorova YA, Gassler N, et al. Lack of gp130 expression in hepatocytes attenuates tumor progression in the DEN model. *Cell Death Dis* 2015;6:e1667.
  - 84) He G, Dhar D, Nakagawa H, Font-Burgada J, Ogata H, Jiang Y, Shalpour S, et al. Identification of liver cancer progenitors whose malignant progression depends on autocrine IL-6 signaling. *Cell* 2013;155:384-396.
  - 85) Porta C, De Amici M, Quaglini S, Paglino C, Tagliani F, Boncimino A, Moratti R, et al. Circulating interleukin-6 as a tumor marker for hepatocellular carcinoma. *Ann Oncol* 2008;19:353-358.
  - 86) van der Zee M, Sacchetti A, Cansoy M, Joosten R, Teeuwssen M, Heijmans-Antonissen C, Ewing-Graham PC, et al. IL6/JAK1/STAT3 Signaling blockade in endometrial cancer affects the ALDHhi/CD126 + stem-like component and reduces tumor burden. *Cancer Res* 2015;75:3608-3622.
  - 87) Maycotte P, Jones KL, Goodall ML, Thorburn J, Thorburn A. Autophagy supports breast cancer stem cell maintenance by regulating IL6 secretion. *Mol Cancer Res* 2015;13:651-658.
  - 88) Streetz KL, Luedde T, Manns MP, Trautwein C. Interleukin 6 and liver regeneration. *Gut* 2000;47:309-312.
  - 89) Won C, Kim BH, Yi EH, Choi KJ, Kim EK, Jeong JM, Lee JH, et al. Signal transducer and activator of transcription 3-mediated CD133 up-regulation contributes to promotion of hepatocellular carcinoma. *Hepatology* 2015;62:1160-1173.
  - 90) Song W, Li H, Tao K, Li R, Song Z, Zhao Q, Zhang F, et al. Expression and clinical significance of the stem cell marker CD133 in hepatocellular carcinoma. *Int J Clin Pract* 2008;62:1212-1218.
  - 91) Mitra A, Yan J, Xia X, Zhou S, Chen J, Mishra L, Li S. IL6-mediated inflammatory loop reprograms normal to epithelial-mesenchymal transition + metastatic cancer stem cells in preneoplastic liver of transforming growth factor beta-deficient beta2-spectrin +/- mice. *Hepatology* 2017;65:1222-1236.
  - 92) Yang L, Inokuchi S, Roh YS, Song J, Loomba R, Park EJ, Seki E. Transforming growth factor-beta signaling in hepatocytes promotes hepatic fibrosis and carcinogenesis in mice with hepatocyte-specific deletion of TAK1. *Gastroenterology* 2013;144:1042-1054.
  - 93) Mitra A, Satelli A, Xia X, Cutrera J, Mishra L, Li S. Cell-surface Vimentin: a mislocalized protein for isolating csVimentin(+) CD133(-) novel stem-like hepatocellular carcinoma cells expressing EMT markers. *Int J Cancer* 2015;137:491-496.
  - 94) Michalopoulos GK, DeFrances MC. Liver regeneration. *Science* 1997;276:60-66.
  - 95) Taub R. Liver regeneration: from myth to mechanism. *Nat Rev Mol Cell Biol* 2004;5:836-847.
  - 96) Sell S. Heterogeneity and plasticity of hepatocyte lineage cells. *Hepatology* 2001;33:738-750.
  - 97) Michalopoulos GK. Liver regeneration. *J Cell Physiol* 2007;213:286-300.
  - 98) Fausto N, Campbell JS, Riehle KJ. Liver regeneration. *Hepatology* 2006;43(2 Suppl 1):S45-S53.
  - 99) Diehl AM, Rai RM. Liver regeneration 3: regulation of signal transduction during liver regeneration. *FASEB J* 1996;10:215-227.
  - 100) Hui TT, Mizuguchi T, Sugiyama N, Avital I, Rozga J, Demetriou AA. Immediate early genes and p21 regulation in liver of rats with acute hepatic failure. *Am J Surg* 2002;183:457-463.

- 101) Haber BA, Mohn KL, Diamond RH, Taub R. Induction patterns of 70 genes during nine days after hepatectomy define the temporal course of liver regeneration. *J Clin Invest* 1993;91:1319-1326.
- 102) Kelley-Loughnane N, Sabla GE, Ley-Ebert C, Aronow BJ, Bezerra JA. Independent and overlapping transcriptional activation during liver development and regeneration in mice. *Hepatology* 2002;35:525-534.
- 103) Arai M, Yokosuka O, Chiba T, Imazeki F, Kato M, Hashida J, Ueda Y, et al. Gene expression profiling reveals the mechanism and pathophysiology of mouse liver regeneration. *J Biol Chem* 2003;278:29813-29818.
- 104) Padiaditakis P, Lopez-Talavera JC, Petersen B, Monga SP, Michalopoulos GK. The processing and utilization of hepatocyte growth factor/scatter factor following partial hepatectomy in the rat. *Hepatology* 2001;34:688-693.
- 105) Stolz DB, Mars WM, Petersen BE, Kim TH, Michalopoulos GK. Growth factor signal transduction immediately after two-thirds partial hepatectomy in the rat. *Cancer Res* 1999;59:3954-3960.
- 106) Fausto N. Liver regeneration. *J Hepatol* 2000;32(1 Suppl):19-31.
- 107) Serandour AL, Loyer P, Garnier D, Courselaud B, Theret N, Glaise D, Guguen-Guillouzo C, et al. TNF $\alpha$ -mediated extracellular matrix remodeling is required for multiple division cycles in rat hepatocytes. *Hepatology* 2005;41:478-486.
- 108) Oosthuizen MM, Ndaba N, Myburgh JA. Rat hepatoproliferin revealed the status of a complete hepatomitogen in human hepatoma cells. *Transplant Proc* 2005;37:89-92.
- 109) Morgan DO. Cyclin-dependent kinases: engines, clocks, and microprocessors. *Annu Rev Cell Dev Biol* 1997;13:261-291.
- 110) Jaumot M, Estanyol JM, Serratos J, Agell N, Bachs O. Activation of cdk4 and cdk2 during rat liver regeneration is associated with intranuclear rearrangements of cyclin-cdk complexes. *Hepatology* 1999;29:385-395.
- 111) Garnier D, Loyer P, Ribault C, Guguen-Guillouzo C, Corlu A. Cyclin-dependent kinase 1 plays a critical role in DNA replication control during rat liver regeneration. *Hepatology* 2009;50:1946-1956.
- 112) Russell WE, Coffey RJ, Jr., Ouellette AJ, Moses HL. Type beta transforming growth factor reversibly inhibits the early proliferative response to partial hepatectomy in the rat. *Proc Natl Acad Sci U S A* 1988;85:5126-5130.
- 113) Braun L, Mead JE, Panzica M, Mikumo R, Bell GI, Fausto N. Transforming growth factor beta mRNA increases during liver regeneration: a possible paracrine mechanism of growth regulation. *Proc Natl Acad Sci U S A* 1988;85:1539-1543.
- 114) Macias-Silva M, Li W, Leu JI, Crissey MA, Taub R. Up-regulated transcriptional repressors SnoN and Ski bind Smad proteins to antagonize transforming growth factor-beta signals during liver regeneration. *J Biol Chem* 2002;277:28483-28490.
- 115) Romero-Gallo J, Sozmen EG, Chytil A, Russell WE, Whitehead R, Parks WT, Holdren MS, et al. Inactivation of TGF-beta signaling in hepatocytes results in an increased proliferative response after partial hepatectomy. *Oncogene* 2005;24:3028-3041.
- 116) Otu HH, Naxerova K, Ho K, Can H, Nesbitt N, Libermann TA, Karp SJ. Restoration of liver mass after injury requires proliferative and not embryonic transcriptional patterns. *J Biol Chem* 2007;282:11197-11204.
- 117) Bissell DM, Wang SS, Jarnagin WR, Roll FJ. Cell-specific expression of transforming growth factor-beta in rat liver. Evidence for autocrine regulation of hepatocyte proliferation. *J Clin Invest* 1995;96:447-455.
- 118) Wurthner JU, Frank DB, Felici A, Green HM, Cao Z, Schneider MD, McNally JG, et al. Transforming growth factor-beta receptor-associated protein 1 is a Smad4 chaperone. *J Biol Chem* 2001;276:19495-19502.
- 119) Eickelberg O, Centrella M, Reiss M, Kashgarian M, Wells RG. Betaglycan inhibits TGF-beta signaling by preventing type I-type II receptor complex formation. Glycosaminoglycan modifications alter betaglycan function. *J Biol Chem* 2002;277:823-829.
- 120) Do N, Zhao R, Ray K, Ho K, Dib M, Ren X, Kuzontkoski P, et al. BMP4 is a novel paracrine inhibitor of liver regeneration. *Am J Physiol Gastrointest Liver Physiol* 2012;303:G1220-G1227.
- 121) Xu CP, Ji WM, van den Brink GR, Peppelenbosch MP. Bone morphogenetic protein-2 is a negative regulator of hepatocyte proliferation downregulated in the regenerating liver. *World J Gastroenterol* 2006;12:7621-7625.
- 122) Breitkopf-Heinlein K, Meyer C, Konig C, Gaitantzi H, Addante A, Thomas M, Wiercinska E, et al. BMP-9 interferes with liver regeneration and promotes liver fibrosis. *Gut* 2017;66:939-954.
- 123) Takamura K, Tsuchida K, Miyake H, Tashiro S, Sugino H. Activin and activin receptor expression changes in liver regeneration in rat. *J Surg Res* 2005;126:3-11.
- 124) Kremer M, Son G, Zhang K, Moore SM, Norris A, Manzini G, Wheeler MD, et al. Smad3 signaling in the regenerating liver: implications for the regulation of IL-6 expression. *Transpl Int* 2014;27:748-758.
- 125) Moh A, Iwamoto Y, Chai GX, Zhang SS, Kano A, Yang DD, Zhang W, et al. Role of STAT3 in liver regeneration: survival, DNA synthesis, inflammatory reaction and liver mass recovery. *Lab Invest* 2007;87:1018-1028.
- 126) Li W, Liang X, Kellendonk C, Poli V, Taub R. STAT3 contributes to the mitogenic response of hepatocytes during liver regeneration. *J Biol Chem* 2002;277:28411-28417.
- 127) Ho KJ, Do NL, Otu HH, Dib MJ, Ren X, Enjoji K, Robson SC, et al. Tob1 is a constitutively expressed repressor of liver regeneration. *J Exp Med* 2010;207:1197-1208.
- 128) Ding ZY, Liang HF, Jin GN, Chen WX, Wang W, Datta PK, Zhang MZ, et al. Smad6 suppresses the growth and self-renewal of hepatic progenitor cells. *J Cell Physiol* 2014;229:651-660.
- 129) Wang Z, Song Y, Tu W, He X, Lin J, Liu F. beta-2 spectrin is involved in hepatocyte proliferation through the interaction of TGFbeta/Smad and PI3K/AKT signalling. *Liver Int* 2012;32:1103-1111.
- 130) Saha T, Vardhini D, Tang Y, Katuri V, Jogunoori W, Volpe EA, Haines D, et al. RING finger-dependent ubiquitination by PRAJA is dependent on TGF-beta and potentially defines the functional status of the tumor suppressor ELF. *Oncogene* 2006;25:693-705.
- 131) Fausto N. Liver regeneration and repair: hepatocytes, progenitor cells, and stem cells. *Hepatology* 2004;39:1477-1487.
- 132) Roskams T. Liver stem cells and their implication in hepatocellular and cholangiocarcinoma. *Oncogene* 2006;25:3818-3822.
- 133) Roskams T, Yang SQ, Koteish A, Durnez A, DeVos R, Huang X, Achten R, et al. Oxidative stress and oval cell accumulation in mice and humans with alcoholic and nonalcoholic fatty liver disease. *Am J Pathol* 2003;163:1301-1311.
- 134) Bhanumathy CD, Tang Y, Monga SP, Katuri V, Cox JA, Mishra B, Mishra L. Itih-4, a serine protease inhibitor regulated in interleukin-6-dependent liver formation: role in liver development and regeneration. *Dev Dyn* 2002;223:59-69.
- 135) Mishra L, Tully RE, Monga SP, Yu P, Cai T, Makalowski W, Mezey E, et al. Praja1, a novel gene encoding a RING-H2 motif in mouse development. *Oncogene* 1997;15:2361-2368.
- 136) Mishra L, Cai T, Yu P, Monga SP, Mishra B. Elf3 encodes a novel 200-kD beta-spectrin: role in liver development. *Oncogene* 1999;18:353-364.
- 137) Morita H, Mazerbourg S, Bouley DM, Luo CW, Kawamura K, Kuwabara Y, Baribault H, et al. Neonatal lethality of LGR5 null mice is associated with ankyloglossia and gastrointestinal distension. *Mol Cell Biol* 2004;24:9736-9743.