

Capsules of the diatom *Achnantheidium minutissimum* arise from fibrillar precursors and foster attachment of bacteria

Katrin Leinweber^{1,2,3} and Peter G. Kroth³

¹ Konstanz Research School Chemical Biology, Germany

² Zukunftskolleg at the University of Konstanz, Germany

³ Biology Department, University of Konstanz, Germany

ABSTRACT

Achnantheidium minutissimum is a benthic freshwater diatom that forms biofilms on submerged surfaces in aquatic environments. Within these biofilms, *A. minutissimum* cells produce extracellular structures which facilitate substrate adhesion, such as stalks and capsules. Both consist of extracellular polymeric substance (EPS), but the microstructure and development stages of the capsules are so far unknown, despite a number of hypotheses about their function, including attachment and protection. We coupled scanning electron microscopy (SEM) to bright-field microscopy (BFM) and found that *A. minutissimum* capsules mostly possess an unstructured surface. However, capsule material that was mechanically stressed by being stretched between or around cells displayed fibrillar substructures. Fibrils were also found on the frustules of non-encapsulated cells, implicating that *A. minutissimum* capsules may develop from fibrillar precursors. Energy-dispersive X-ray (EDX) spectroscopy revealed that the capsule material do not contain silicon, distinguishing it from the frustule material. We furthermore show that bacteria preferentially attach to capsules, instead of non-encapsulated *A. minutissimum* cells, which supports the idea that capsules mediate diatom-bacteria interactions.

Submitted 18 December 2014

Accepted 5 March 2015

Published 26 March 2015

Corresponding author

Katrin Leinweber,
katrin.leinweber@uni-konstanz.de

Academic editor

Hauke Smidt

Additional Information and
Declarations can be found on
page 13

DOI 10.7717/peerj.858

© Copyright

2015 Leinweber and Kroth

Distributed under

Creative Commons CC-BY 4.0

OPEN ACCESS

Subjects Ecology, Microbiology, Plant Science

Keywords Biofilms, Diatoms, Scanning electron microscopy, Energy-dispersive x-ray spectroscopy, Diatom-bacteria interactions

INTRODUCTION

Diatoms (Bacillariophyceae) are among the most productive photoautotrophic, aquatic microorganisms. They contribute an estimated 40–45% to the net primary production (NPP) of the oceans (Mann, 1999), which themselves contribute approx. 45–50% to the global NPP (Field et al., 1998). Additionally, diatoms are important for the biogeochemical cycling of silicon, due to their ornate cell walls. These are called “frustules” and are composed of biomineralised silica (Bradbury, 2004). Cell division includes the separation of the two frustule parts (“thecae”) along a “girdle” region. Each daughter cell then complements its inherited epitheca with a newly synthesised, smaller hypotheca. Within these thecae, slits (called “raphes”) and pores may be present, facilitating the secretion of

extracellular polymeric substances (EPS; [Wetherbee et al., 1998](#); [Wang et al., 2000](#)). This in turn conveys substrate attachment and motility to benthic diatoms, which often form biofilms with other photoautotrophic algae, as well as heterotrophic bacteria ([Buhmann, Kroth & Schleheck, 2012](#)).

The diatom *Achnantheidium minutissimum* (Kützing) [Czarnecki \(1994\)](#) is a cosmopolitan freshwater diatom ([Round & Bukhtiyarova, 1996](#)) that is also found in the littoral zone of Lake Constance. It represents a dominant species complex of early colonisers ([Johnson, Tuchman & Peterson, 1997](#)), forming epilithic biofilms in association with a variety of satellite bacteria ([Bahulikar, 2006](#)). Such bacteria as well as their spent media have been shown to increase the secretion of extracellular polymeric substances (EPS) like carbohydrates by *A. minutissimum* ([Bruckner et al., 2011](#)). Additionally, growth as well as secretion of proteins and dissolved free amino acids was reportedly influenced in the presence of bacteria ([Bruckner et al., 2008](#); [Bruckner et al., 2011](#)). Analogous to the rhizosphere of terrestrial environments (composed largely of fungi and bacteria associated with plant roots), a “phycosphere” has been defined as the space surrounding algal cells including the multitude of inter-kingdom interactions between bacteria and algae ([Bell, Lang & Mitchell, 1974](#); [Amin, Parker & Armbrust, 2012](#)).

EPS secretion is of ecological relevance, contributing for instance to the stabilisation of sediments ([Cyr & Morton, 2006](#); [Lubarsky et al., 2010](#)). Studying biofilm formation can therefore assist in the understanding of shore and coastline erosion as a result of climate-related changes (see section 3.2.1 of [Widdows & Brinsley, 2002](#) plus references therein). At the same time diatom settlement is one of the major causes of biofouling of man-made machinery in aquatic applications ([Molino & Wetherbee, 2008](#)).

A. minutissimum is an excellent model for studying diatom biofilms, because this alga is abundant *in natura* ([Patrick & Reimer, 1966](#); [Krammer & Lange-Bertalot, 1991](#)) and can be cultivated in the laboratory both as “xenic” biofilms ([Myklestad et al., 1989](#)) and “axenic” suspension cultures ([Windler et al., 2015](#)). Xenic cultures contain bacteria from the diatom’s natural habitat. Removal of these bacteria is possible (for example by antibiotic treatment) and yields viable axenic cultures ([Bruckner & Kroth, 2009](#); [Windler, Gruber & Kroth, 2012](#)). Bacteria-free cultures allow the establishment of bioassays in order to study the interactions between diatoms and bacteria, although potentially unwelcome long-term effects have to be taken into account. For example, axenic cultivation can lead to a reduction of average cell size and to frustule deformations ([MacDonald, 1869](#); [Pfitzer, 1871](#); [Geitler, 1932](#); [Windler et al., 2014](#)). However, such deformations also occur naturally and can be used as stress markers, as well as water quality indicators ([Morin, Coste & Hamilton, 2008](#); [Falasco et al., 2009](#); [Cantonati et al., 2014](#)).

A. minutissimum forms biofilms and extracellular structures like stalks and capsules. These structures have been defined as “unidirectionally deposited, multi-layered structures attaching cells to substrata” ([Hoagland et al., 1993](#)). Stalks have been investigated previously by transmission electron microscopy and biochemical techniques to elucidate their structural morphology and chemical composition ([Daniel, Chamberlain & Jones, 1987](#)). Additionally, a phase model of diatom adhesion involving stalks has been developed

(Wang *et al.*, 1997): Stalks may protrude from so called “basal pads” of aggregated EPS at the apical valve faces within hours to a few days, thus elevating the cells above the substrate. Capsule formation in *A. minutissimum* biofilms occurs later in the stationary phase, is possibly triggered by bacterial influences, and may cement diatom attachment (Windler *et al.*, 2015). That study also found that axenic *A. minutissimum* cultures mostly secrete soluble carbohydrates while the insoluble carbohydrates in xenic cultures were positively correlated with the appearance of capsules.

Diatom capsules have puzzled phycologists for a long time, and their potential physiological and ecological function have elicited a variety of hypotheses (Lewin, 1955; Geitler, 1977). For example, capsules have been proposed to participate in locomotion, flotation, attachment, waste removal, catchment of inorganic nutrients, storage of polysaccharides, sexual reproduction, as well as protection against grazing and dehydration. More recently, it was demonstrated that capsule formation is dependent on at least “a certain minimum light intensity,” sparking the idea that capsules might serve as an additional polysaccharide storage pool, once intracellular capacities are saturated (Staats *et al.*, 2000).

Diatom capsules and other extracellular material have been characterised biochemically, while electron microscopy has enabled highly detailed morphological characterisations of diatom frustules (Toyoda *et al.*, 2005; Toyoda *et al.*, 2006; Morin, Coste & Hamilton, 2008). Additionally, atomic force microscopy (AFM) revealed many mechanical properties of the extracellular polymers of some diatoms (Crawford *et al.*, 2001; Higgins *et al.*, 2003; Willis *et al.*, 2013). In the present study, scanning electron microscopy (SEM), as well as energy-dispersive X-ray (EDX) spectroscopy were employed to analyse the microstructure and development stages of *Achnantheidium minutissimum* capsules in order to further develop this species as a model system for diatom-bacteria interactions, and to elucidate one aspect of the complex interactions of diatoms and other microorganisms.

MATERIALS AND METHODS

Cultivation conditions

Achnantheidium minutissimum (Kützing) Czarnecki (1994) was isolated from photoautotrophic epilithic biofilms of Lake Constance as previously described (Windler, Gruber & Kroth, 2012). Stock cultures were grown in cell culture flasks with ventilation caps (Sarstedt, Newton, North Carolina, USA) filled with modified liquid Bacillariophycean Medium (BM; Schlösser, 1994; Windler, Gruber & Kroth, 2012) in two different culture states: either with co-isolated bacteria (“xenic”), or “axenic” after their removal (Windler, Gruber & Kroth, 2012). Monthly, these stock cultures were scraped off the flask bases and sub-cultured in new BM.

Biofilms were grown directly on SEM sample carriers by the following procedure: Sample carrier disks of ca. 1 cm in diameter were punched from Thermanox tissue culture cover slips (Miles Laboratories Inc., Elkhart, Indiana, USA). Thermanox material has two different sides, therefore care was taken to always store and handle the disks right-side-up. They were sterilised by immersion in 70% isopropanol (v/v in H₂O) overnight and subsequently irradiated with UV light for 2 h in a laminar flow cabinet. One

sterile disk was placed into each well of 6-well plates (Sarstedt, Newton, North Carolina, USA, order number 83.1839.500) and covered with 3 to 5 mL BM. Culture wells were inoculated with 5×10^5 to 1×10^6 *A. minutissimum* cells from the stock cultures after those were checked to be axenic or xenic. Axenicity was confirmed by SYBR Green staining and observation under a BX51 (Olympus, USA) bright-field fluorescence microscope using GFP fluorescence filters. Well plates were sealed with Parafilm and incubated at 16 °C under an illumination regime of 12 h dark and 12 h light at $20\text{--}50 \mu\text{mol photons} \times \text{m}^{-2} \times \text{s}^{-1}$ for 11 to 31 days.

Crystal violet staining and bright-field microscopy

Thermanox disks were removed from stationary cultures after 11 to 31 days with inverted (“soldering” or “cover glass”) forceps (Hammacher, Germany) and rinsed with 1 mL sterile-filtered tap water. A Gram-staining protocol adapted from [Kaplan & Fine \(2002\)](#) was applied to visualise adherent cells and their extracellular polymeric structures as follows: A droplet of 200 μL solution of 0.02% crystal violet (CV) in sterile filtered tap water was applied onto the disk for 12 min, which was held suspended by forceps. Disks were rinsed with 1 to 3 mL water, until the runoff no longer contained visible CV. In order to find the same cell clusters in both microscopic approaches, pointing or encircling scratches were made into disk surfaces.

Disks were placed on moistened glass slides and moistened additionally with 20 μL sterile-filtered tap water. Cover slips were applied carefully and marked regions were observed under a BX51 (Olympus, Tokyo, Japan) bright-field fluorescence microscope using chlorophyll fluorescence filters. Images of these areas at various magnifications were taken with AxioCams MRm (fluorescence and grey-scale images) and MRc (colour) using AxioVision software (Zeiss, Oberkochen, Germany).

Scanning electron microscopy (SEM) and energy-dispersive X-ray (EDX) spectroscopy

Diatom cells were fixed on Thermanox disks by incubation in a mixture of 2% glutaraldehyde, 10 mM CaCl_2 and 10 mM MgCl_2 in 0.1 M sodium cacodylate buffer at pH 7 and room temperature (RT) for 2 h. Dehydration was conducted first with 30% and 50% EtOH, at RT for 2 h each, followed by 70% EtOH at 4 °C over night, 90% EtOH at RT for 2 h and finally with 96% and 100% EtOH twice for 1 h each. Critical point drying in CO_2 followed (Balzers CPD030; Oerlikon Balzers, Balzers, Liechtenstein) and samples were finally sputtered with gold (Au) and palladium (Pd) to a thickness of 5 nm (Balzers SCD030; Oerlikon Balzers, Balzers, Liechtenstein).

After fixation, dehydration and Au/Pd-sputtering, the biofilm-covered Thermanox disks were imaged with a Zeiss “AURIGA” scanning electron microscope, controlled with the “SmartSEM” software v05.04.05.00. The elemental composition of samples was analysed by energy-dispersive X-ray (EDX) spectroscopy. Samples were excited with the AURIGA’s electron beam at 10 kV and the emitted X-rays (of specific energy levels due to the elemental electron configuration) were recorded with an Oxford Instruments “X-Max

20 mm² detector (Oxford Instruments, Scotts Valley, California, USA) and the “INCA” software v4.15.

Bacteria counting and data visualisation

Bacteria (rod-shaped particles) on fully visible *A. minutissimum* valve faces were counted in scanning electron micrographs. Valve faces were classified into frustules and capsules, depending on whether pores were visible or completely disappeared under a layer of capsule material. Diatom cells with partial encapsulation were not included in the counting, and neither were bacteria cells which attached to the girdle bands of diatom cells.

ImageJ v1.46r with the Cell Counter plug-in v2010/12/07 was used to count diatoms and bacteria cells. This data was evaluated and visualised with R v3.1.1 (language and environment for statistical computing; *R Development Core Team, 2011*), ggplot2 v1.0.0 (*Wickham, 2009*) and RStudio v0.98 Desktop Open Source Edition.

RESULTS AND DISCUSSION

For BFM and SEM observations, we cultured *Achnantheidium minutissimum* xenically and axenically on Thermanox disks. After incubation periods of 11 to 31 days, the disk surfaces in xenic cultures were densely covered by a mono-layer of *A. minutissimum* cells (*Fig. 1*). This biofilm was visible by eye as a light greenish-brown coloration on the substrate disks after removal from the medium. Staining with the dye crystal violet (CV) and subsequent bright-field microscopy showed that large portions of the diatom cells were surrounded by capsules.

In contrast, axenic *A. minutissimum* cells did not form biofilms, so that even careful rinsing left much fewer cells attached to the disks and thus available for SEM analysis. This observation is in agreement with studies that utilised other growth substrates to compare biofilm formation by axenic and xenic diatom cultures. By measuring chlorophyll contents, the possibility that axenic cells might simply be less proliferate was excluded (*Windler et al., 2015*). Xenic *A. minutissimum* cultures on the other hand have also been found to develop biofilms on glass beads as well as in plastic multi-well plates (*Lubarsky et al., 2010; Windler et al., 2015*). Our results demonstrate, that xenic biofilms of *A. minutissimum* can also be grown on Thermanox disks, enabling direct preparation for electron microscopy of native biofilm samples.

Identification of *A. minutissimum* capsule microstructures

In order to correlate the hydrated *A. minutissimum* capsules visible in light microscopy to their dehydrated appearance in SEM, areas were marked by scratches on the CV stained disks and cells of interest were identified by BFM. Subsequently, the same areas and cells were found again in SEM (*Fig. 2*). The same technique was successfully applied to axenic cultures, despite the lower prevalence of adherent cells (*Fig. S1*).

In BFM, the CV stained capsules were visible as voluminous, rounded structures around most of the cells. As extracellular polymeric structures in the genus *Achnantheidium* are composed mostly of carbohydrates (*Wustman et al., 1998; Windler et al., 2015*), strong hydration in the native biofilm is likely the source of this appearance of the capsules. In

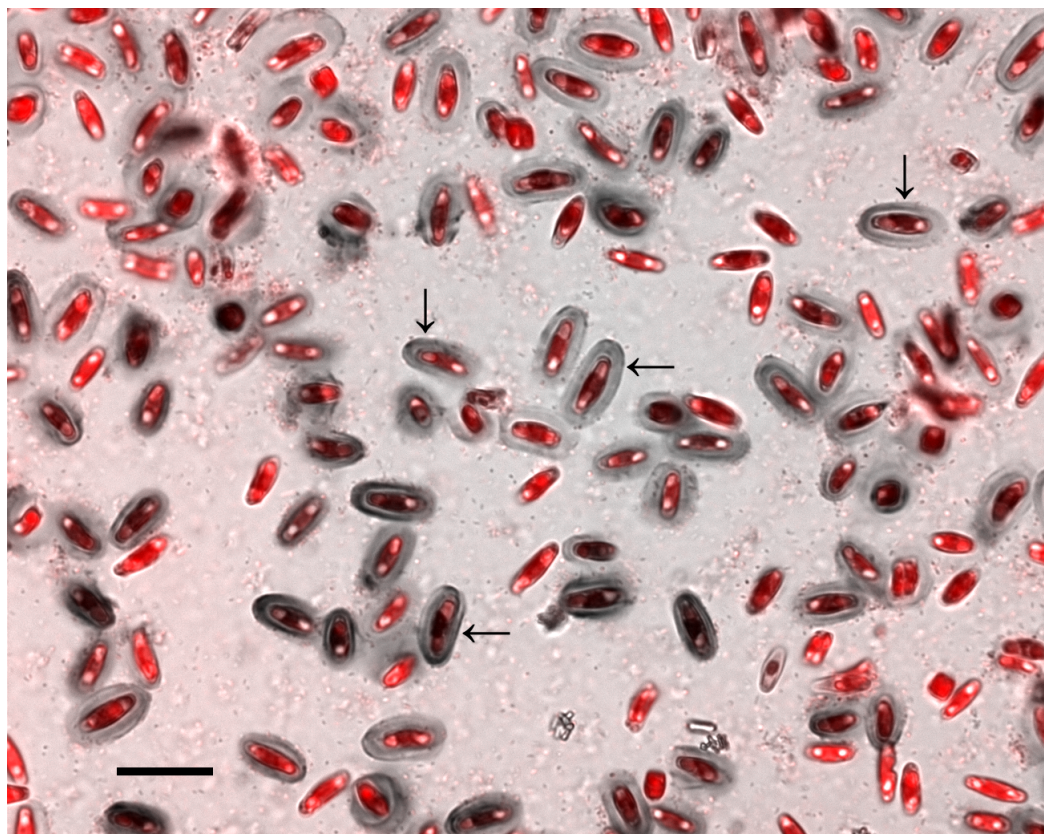


Figure 1 Crystal violet (CV) stained capsules (grey ovals) in xenic *A. minutissimum* biofilm (scale bar: 20 μm). Micrograph depicts 11 days old culture and is a merge of the chlorophyll fluorescence channel (red; indicating diatom cells) and the bright-field image (grey). Some mature capsules are marked with arrows. Bright spots within diatom cells are lipid bodies. Bacteria are visible as light and dark speckles around and in between the diatom cells.

SEM, we were able to distinguish two types of *A. minutissimum* cells in xenic biofilms already at low magnifications: cells with pores in their frustules still visible, and cells covered by an apparently unstructured material masking the pores.

The frustules of non-encapsulated xenic, as well as axenic *A. minutissimum* cells appeared identical to those from scanning electron micrographs shown in previous studies (Mayama & Kobayasi, 1989; Potapova & Hamilton, 2007; Hlúbíková, Ector & Hoffmann, 2011). The low prevalence of raphes in our images is most likely due to their orientation towards the substrate for mucilage secretion (Gordon & Drum, 1970; Wetherbee et al., 1998). Natural attachment and orientation of cells on our biofilm disks was retained because we did not employ harsh preparation techniques, such as boiling the diatom cells in sulphuric acid (Mayama & Kobayasi, 1989). Such harsh treatments are designed to prepare only frustules and in our case would likely have resulted in cell detachment from the growth substrate, as well as random orientation on the SEM sample carrier. Instead, we utilised the SEM sample carrier disks directly as growth substrates for the biofilms.

The SEM images in Fig. 3 show that the capsule material appears to be unstructured or slightly granular, resembling the “adhering film and tube” of *Cymbella microcephala*

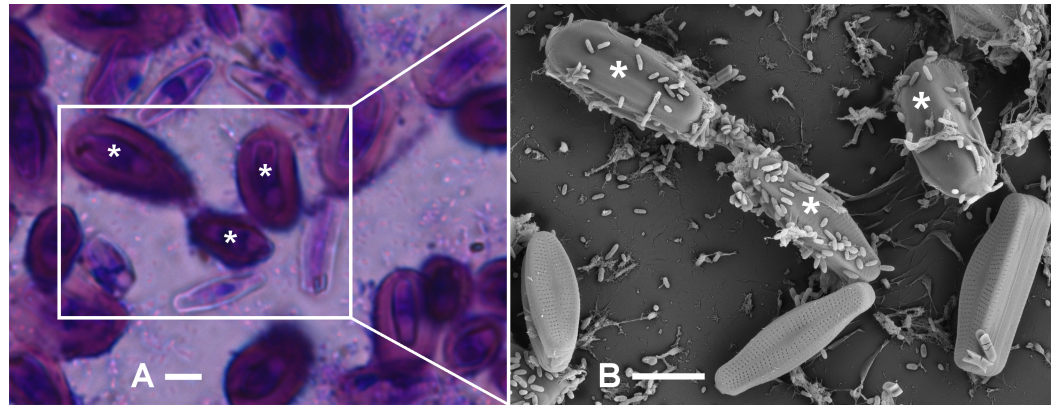


Figure 2 Identification of *A. minutissimum* capsules (asterisks) by successive observation of cell clusters by first bright-field and then scanning electron microscopy of xenic biofilm (scale bars: 5 μm). (A) Bright-field micrograph of crystal violet (CV) stained, 31 days old culture. Encapsulated cells (asterisks) are strongly stained, while weak staining indicates few extracellular polymeric substances (EPS) on the frustule surfaces. (B) Scanning electron micrograph of the the same cell cluster. Encapsulated cells (asterisks) are surrounded by an opaque material. Frustule pores are visible on cells that did not possess a capsule in the hydrated biofilm. Note also the unequal distribution of bacteria cells on capsules versus non-encapsulated frustules.

and *Cymbella prostrata* reported in figures 31 and 32 of Hoagland *et al.* (1993) and also the shaft ultra-structure of the marine diatom *Achnanthes longipes* displayed in Fig. 8 of Wang *et al.* (2000).

In addition to covering the cells, the capsule material also had sheet-like structures (arrows in Fig. 3A) where it was stretched between *A. minutissimum* cells and the anchoring points on the substrate. This pattern is most likely due to dehydration during SEM sample preparation (Hoagland *et al.*, 1993). Due to fixation of the samples prior to drying, the hydrated capsules most likely shrank in their entirety.

Fibrillar precursors may give rise to *A. minutissimum* capsules

Closer inspection provided many examples that the frustules of non-encapsulated xenic *A. minutissimum* cells were not completely free of extracellular polymeric substances (EPS). Instead, they were covered by a mesh of fibrils (Fig. 3B), arranged mostly around the frustule pores, sometimes crossing them and sometimes sticking out. The average diameter of these fibrils was about 45 ± 9 nm. The fibrils were rarely observed to be secreted through the pores, although these were found to be large enough (from 60 to 140 nm in diameter), showing round to elongated shapes. Fibrils were generally longer than the diameter of pores, but quantification was not performed because branching and interweaving of the fibrils made it impossible to determine the respective beginnings or ends. To the best of our knowledge, this is the first report of frustule-attached fibril structures in freshwater diatoms. Similarly structured, thinner fibrils were reported previously only for marine diatoms (Bosak *et al.*, 2012).

Fibrillar meshes of varying densities were detected in both axenic and xenic cultures, but only the latter also contained capsules. Axenic cultures appeared to contain more cells with

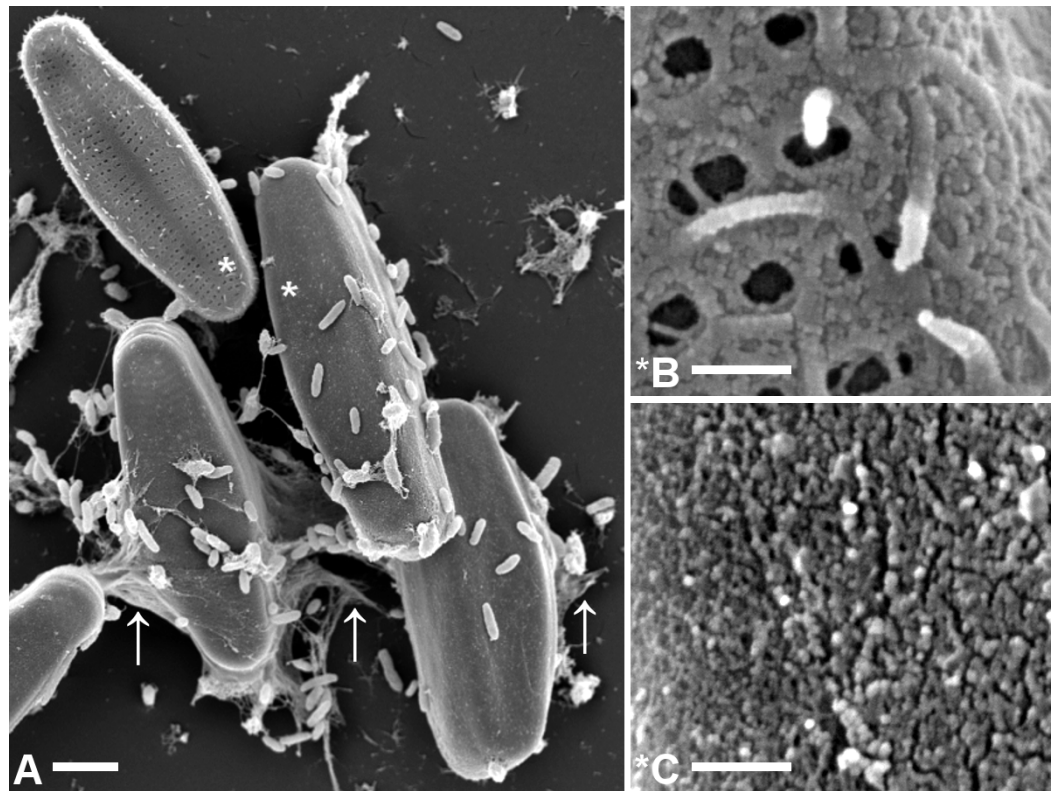


Figure 3 Comparison of microstructures on *A. minutissimum* cell surfaces in a xenic biofilm. (A) Capsule material is sometimes stretched between cells and/or towards the substrate (arrows; scale bar: 2 μm). Culture was 11 days old at the time of fixation for SEM. Asterisks denote magnified areas B and C. (B) Non-encapsulated cells possess a fibrillar mesh of varying degrees of density. Frustule pores are only partially covered and in some cases, fibrils stick out from the frustule (scale bar: 1 μm). (C) Encapsulated cells are completely covered with a material of slightly granular structure, but lacking clearly discernible features (scale bar: 1 μm).

few, short fibrils (Fig. S2), which may initiate surface attachment of cells in both culture types. However, only in xenic cultures, bacteria could induce the secretion of firmer EPS structures (Bruckner et al., 2011), and thus substrate adhesion, in the majority of cells.

Furthermore, we found intermediate stages between the fibrillar meshes that covered the frustule surface only partially and the complete encapsulation with apparently unstructured material (Fig. 4). The similarity in surface structure suggests a relation of fibrils and capsules. The disordered arrangement of fibrils shown in Figs. 4A and 4B is also a feature of the unstructured capsule material shown in Fig. 4C. In it, no particular order of the slightly granular substructures is discernible either. This visual impression suggests that the fibrillar meshes on *A. minutissimum* cells might be precursors to capsules, into which the fibrils may condense. An alternative explanation for the capsule structure may be the polymerisation of a secondary type of fibrils upon the primary mesh (Fig. 4A), relegating the latter to a scaffolding function.

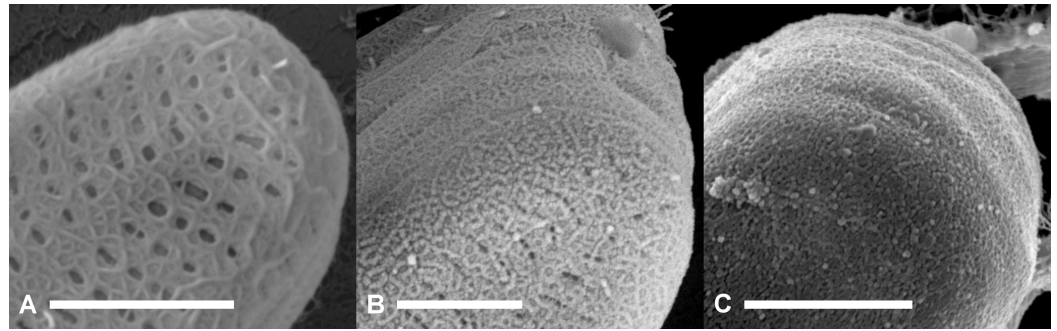


Figure 4 Scanning electron micrographs of terminal parts of *A. minutissimum* cells at potentially different encapsulation stages within xenic biofilms (scale bars: 1 μm). Fibrillar meshes (A) may form capsule material (C) by denser growth and cross-linking of fibrils (B). Depicted samples were taken from stationary, 11 to 31 days old cultures.

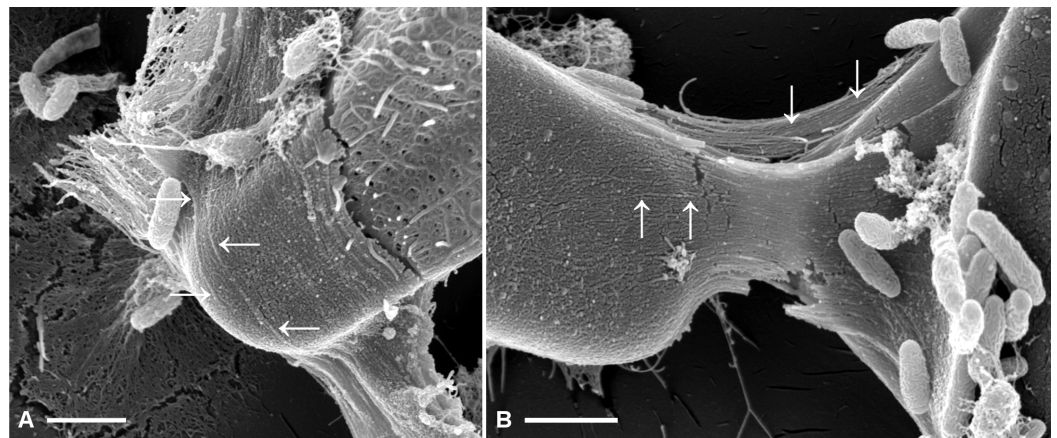


Figure 5 Fibrillar microstructures (arrow pairs) within capsule material of *A. minutissimum* cells in xenic biofilm are revealed by mechanical stress (scale bars = 1 μm). Micrographs depict samples from an 11 days old culture. (A) Tip of a partially encapsulated cell. Fibrillar substructures are continuous throughout the capsule material. (B) Capsule material stretched between cells frays into fibrils.

In either case, the fibril formation is not strictly synchronised between cells in the same culture. It rather appears to be a function of each cell's individual age, because different stages appeared both on days 11 and 31 of incubation, as well as in between.

To further elucidate whether or not fibrils and capsules might be related, we analysed mechanically stressed capsule areas (Fig. 5). Here, tension yielded an alignment of capsule microstructures, as well as fraying on the edges. Fibrillar structures resulting from these processes were similar in diameter to the frustule-covering fibrils.

There are two possible sources for the mechanical force. Firstly, motility of the cells relative to each other in the native biofilm. However, it has been reported for a related species in the order *Achnanthes*, that motility is lost upon production of EPS structures (Wang *et al.*, 1997). Secondly, mechanical force could be caused by the dehydration during SEM sample preparation. Both explanations lead to the question why mechanical force highlighted the fibrillar microstructure, while relaxed capsule areas (see previous figures)

appeared unstructured. Micromanipulation experiments may be required to further investigate the properties of *A. minutissimum* capsules and their fibrillar microstructures. Such experiments have been conducted by force-mode AFM on the mucilage layers of other diatoms (Higgins *et al.*, 2003; Willis *et al.*, 2013).

Based on this data, we suggest fibrils as a precursor candidate for capsules. Fibrils may condense into the capsule material as depicted in Fig. 4, for example by enzymatic cross-linking or transglycosylase activity. Fibrils may be disguised in relaxed capsule material because they are arranged in a disorderly fashion, but mechanical stress yielded a visible alignment.

Capsule material does not contain silicon

Silicon (Si) is a major component of diatom frustules, in which it is present as hydrated silicon dioxide. Capsules on the other hand may consist mostly of extracellular polymeric carbohydrates (Wustman *et al.*, 1998; Windler *et al.*, 2015). In order to exclude the possibility that the capsule material we observed might represent frustule deformations or extensions (Windler *et al.*, 2014; Cantonati *et al.*, 2014) it was screened for the presence of Si. Energy-dispersive X-ray (EDX) spectra were recorded from capsule areas with and without a cell body and thus frustule below them (Fig. 6).

As expected, higher counts around 1.75 keV, which signifies Si (Guerra *et al.*, 2013; Chandrasekaran *et al.*, 2014), were obtained from capsule material, than from cell bodies. Background level Si counts likely result from the frustule edges closeby due to the “pear effect” (Arnould & Hild, 2007). It explains how excited electrons diffuse into the sample, so that a pear-shaped volume of ca. 0.5–1 μm diameter below the measurement point or area also emits detectable X-rays. The cell bodies in this figure are separated by approximately that distance. The stronger gold (Au) signal of the capsule material around 2.15 keV compared to the control areas probably resulted from the larger sputtered surface area within the measurement volume. Due to the absence of notable Si signals from *A. minutissimum* capsule material, we can exclude the possibility that it is some kind of frustule extension or deformation.

Furthermore, we can tentatively exclude chitin as a major component of the capsule material, because no notable nitrogen signals (N; 0.39 keV) were recorded from it. Chitin fibrils have been found to be secreted by diatoms into the surrounding water body (Gardner & Blackwell, 1971; Herth, 1979). In contrast, the fibrillar meshes we describe here, tightly covered the frustule surfaces of individual *A. minutissimum* cells and therefore likely represent different EPS structures.

Bacteria preferentially attach to encapsulated diatom cells

It became apparent during the SEM observations, that diatom-attached bacteria cells occurred more often on capsules than on frustules. To substantiate this observation, bacteria cells were counted on both diatom cell surface types (Fig. 7).

Notably higher numbers of bacteria (ca. 25 times more on average) adhered to capsules than to frustules throughout the stationary phase (means: 11.41 ± 8.23 and 0.46 ± 0.82 respectively). The variance in the numbers of bacteria per diatom was larger (ca. 100

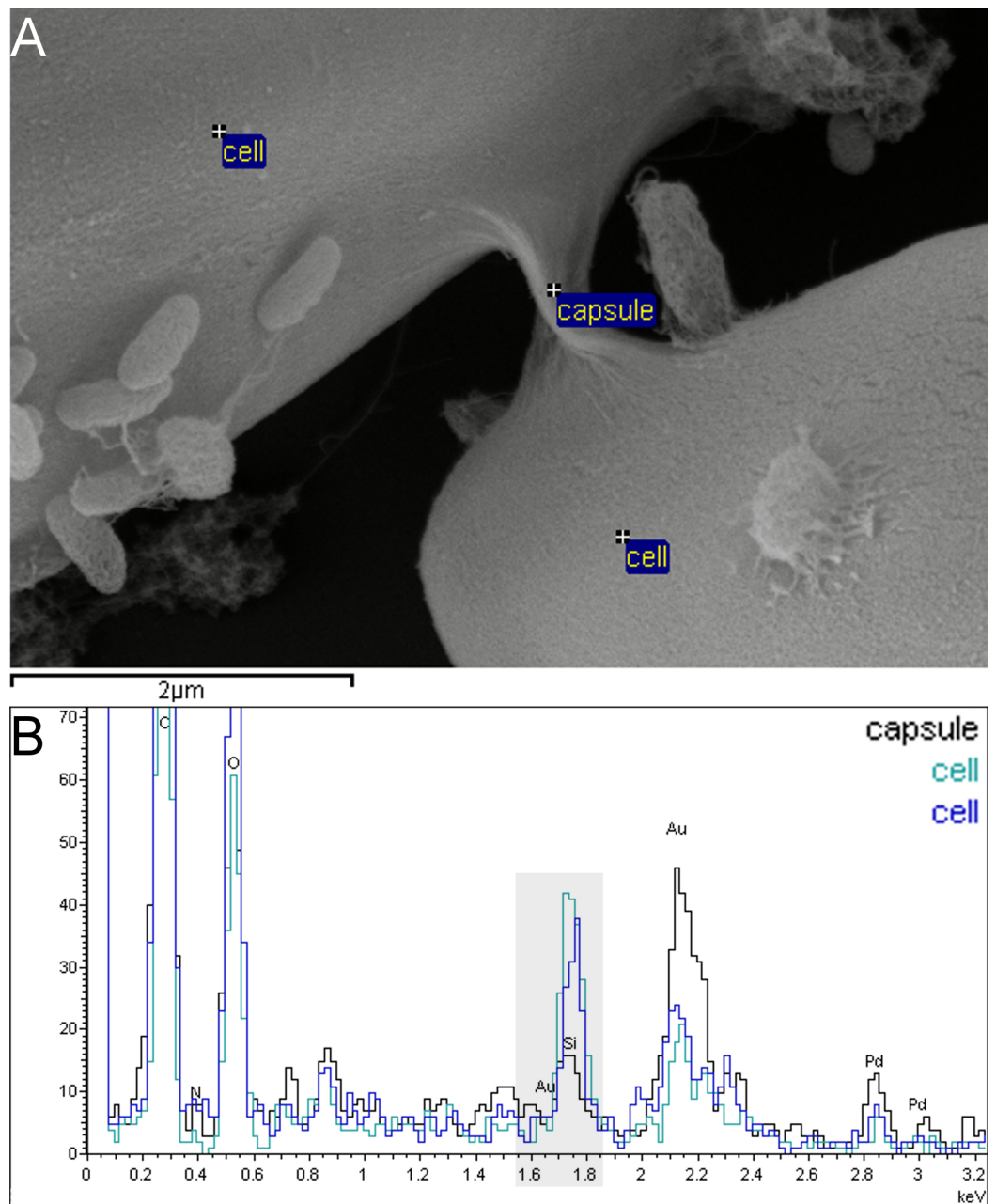


Figure 6 Capsule material in xenic *A. minutissimum* biofilms does not contain silicon and can thus be distinguished from the frustule. Samples were taken from 11 days old culture. (A) Scanning electron micrograph of capsule material that is stretched between *A. minutissimum* cells (partially visible). Labels indicate energy-dispersive X-ray (EDX) measurement points. (B) EDX spectra show that less silicon (peak around 1.75 keV, with grey background) is found in the capsule material without cell body below it (black trace) compared to the control points on the cell bodies (blue and turquoise traces). Stronger Au signal around 2.15 keV likely results from larger gold-sputtered surface area in close proximity to the “capsule” measurement point.

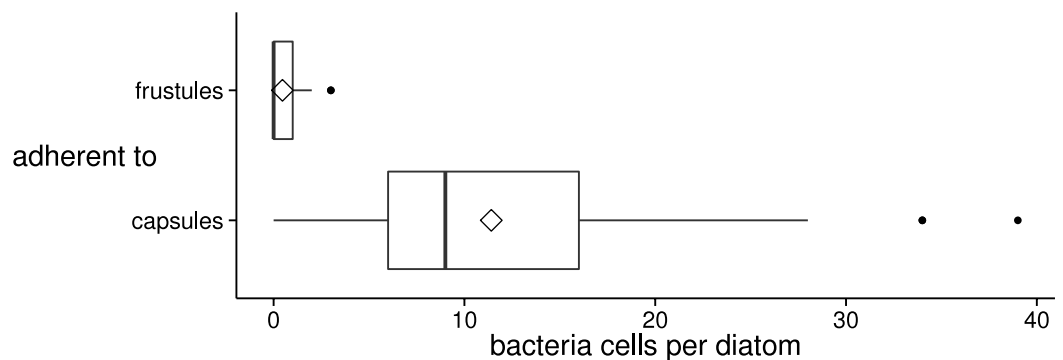


Figure 7 Distribution of the number of bacteria cells adherent to diatom valve faces of different surface types (frustule or capsule) in xenic *A. minutissimum* biofilms. Bacteria were counted in SEM images, if they were in direct, visible contact with the valve face of either a frustule ($N = 54$) or a completely encapsulated diatom cell ($N = 71$; see Figs. 2B and 3A for illustration). Samples were taken from 11 to 31 days old cultures. Boxes represent 1st and 3rd quartile. Black center lines represent medians. Diamond symbols represent means. Whiskers extend to 1.5-fold of the inter-quartile range (IQR). Black dots represent extreme values that lie outside the IQR.

times) on encapsulated cells than on frustules, indicating that not all encapsulated *A. minutissimum* cells were equally strongly colonised by bacteria. Presumably, this is due to the population dynamics of the co-isolated bacteria within different areas of the xenic biofilms.

Bacteria as well as diatom cells with only fibrillar meshes on their frustule were found to individually retain attachment to the substrate. We deem it unlikely that attachment to each other could have been too weak to withstand the rinsing step. Instead, the bacteria preferentially adhered to capsules, while either being actively repelled from non-encapsulated *A. minutissimum* cells or only not especially drawn to their frustules.

It has been proposed that *A. minutissimum* capsules might be an asset in the mutualistic relationship of this diatom with its satellite bacteria (Windler *et al.*, 2015). Previous findings suggest a pattern of bacterial adherence to *A. minutissimum* cells in xenic biofilms that would support this hypothesis (Windler, Gruber & Kroth, 2012): diatom cells were surrounded by a bacteria-free space, followed by a layer of densely aggregated bacteria cells. Although no CV stains were conducted in that study, the bacteria-free regions resemble the EPS structures reported since then as capsules.

In bacterial biofilms, nutrient distribution is predominantly determined by diffusion, sometimes along strong gradients within a biofilm (Stewart, 2003). Similarly, variations of cellular nutrient distributions within freshwater diatom biofilms exist (Murdock *et al.*, 2010). Furthermore, it is possible that diatom capsules serve as a common nutrient pool to the satellite bacteria in a mutualistic relationship (Bruckner *et al.*, 2008). Therefore, competition between individual diatom cells for re-mineralising bacteria could occur. Nutrient-limited, but still photosynthetically active diatom cells may produce predominantly insoluble carbohydrates to foster close attachment of heterotrophic bacteria that re-mineralise EPS or secrete vitamins.

Our finding that bacteria attach preferentially to capsules strengthens the argument that capsules play a role in the inter-kingdom relationship of satellite bacteria and benthic diatoms. Whether this relationship is antagonistic, mutualistic or commensal in nature remains to be elucidated. Labelling experiments with isotopes or fluorophores may assist in the determination of carbohydrate fluxes from the diatom's EPS structures to bacteria feeding on those.

ACKNOWLEDGEMENTS

We thank Joachim Hentschel, Laretta Nejedli and Michael Laumann of the Electron Microscopy Center of the University of Konstanz for sample preparation, SEM and EDX device operations, and insightful discussions, as well as Ansgar Gruber and Carolina Rio Bartulos for helpful ideas and suggestions. Our gratitude also belongs to two anonymous reviewers whose valuable suggestions improved this manuscript greatly.

ADDITIONAL INFORMATION AND DECLARATIONS

Funding

This work was financed by the Konstanz Research School Chemical Biology, the University of Konstanz as well as its Zukunftskolleg. The funders had no role in study design, data collection and analysis, decision to publish, or preparation of the manuscript.

Grant Disclosures

The following grant information was disclosed by the authors:
Konstanz Research School Chemical Biology: GSC 218.

Competing Interests

The authors declare there are no competing interests.

Author Contributions

- Katrin Leinweber conceived and designed the experiments, performed the experiments, analyzed the data, contributed reagents/materials/analysis tools, wrote the paper, prepared figures and/or tables, reviewed drafts of the paper.
- Peter G. Kroth contributed reagents/materials/analysis tools, discussed the design of the project, and reviewed drafts of the paper.

Data Deposition

The following information was supplied regarding the deposition of related data:

Raw data and R script by which Fig. 7 was generated are available at <http://dx.doi.org/10.6084/m9.figshare.1273931>.

Supplemental Information

Supplemental information for this article can be found online at <http://dx.doi.org/10.7717/peerj.858#supplemental-information>.

REFERENCES

- Amin SA, Parker MS, Armbrust EV. 2012.** Interactions between Diatoms and Bacteria. *Microbiology and Molecular Biology Reviews* **76**:667–684 DOI [10.1128/MMBR.00007-12](https://doi.org/10.1128/MMBR.00007-12).
- Arnould O, Hild F. 2007.** On the measurement by EDX of diffusion profiles of Ni/Cu assemblies. ArXiv preprint. [arXiv:0712.3636](https://arxiv.org/abs/0712.3636)[physics].
- Bahulikar RA. 2006.** Diatoms from littoral zone of Lake Constance: diversity, phylogeny, extracellular polysaccharides and bacterial associations. Dissertation, University of Konstanz, Konstanz. Available at http://kops.uni-konstanz.de/bitstream/handle/123456789/6836/Bahulikar_Diss.pdf?sequence=1.
- Bell WH, Lang JM, Mitchell R. 1974.** Selective stimulation of marine bacteria by algal extracellular products. *Limnology and Oceanography* **19**:833–839 DOI [10.4319/lo.1974.19.5.0833](https://doi.org/10.4319/lo.1974.19.5.0833).
- Bosak S, Pletikapić G, Hozic A, Svetličić V, Sarno D, Viličić D. 2012.** A novel type of colony formation in marine planktonic diatoms revealed by atomic force microscopy. *PLoS ONE* **7**:e44851 DOI [10.1371/journal.pone.0044851](https://doi.org/10.1371/journal.pone.0044851).
- Bradbury J. 2004.** Nature's nanotechnologists: unveiling the secrets of diatoms. *PLoS Biol* **2**:e306 DOI [10.1371/journal.pbio.0020306](https://doi.org/10.1371/journal.pbio.0020306).
- Bruckner CG, Bahulikar R, Rahalkar M, Schink B, Kroth PG. 2008.** Bacteria associated with benthic diatoms from lake constance: phylogeny and influences on diatom growth and secretion of extracellular polymeric substances. *Applied and Environmental Microbiology* **74**:7740–7749 DOI [10.1128/AEM.01399-08](https://doi.org/10.1128/AEM.01399-08).
- Bruckner CG, Kroth PG. 2009.** Protocols for the removal of bacteria from freshwater benthic diatom cultures. *Journal of Phycology* **45**:981–986 DOI [10.1111/j.1529-8817.2009.00708.x](https://doi.org/10.1111/j.1529-8817.2009.00708.x).
- Bruckner CG, Rehm C, Grossart H, Kroth PG. 2011.** Growth and release of extracellular organic compounds by benthic diatoms depend on interactions with bacteria. *Environmental Microbiology* **13**:1052–1063 DOI [10.1111/j.1462-2920.2010.02411.x](https://doi.org/10.1111/j.1462-2920.2010.02411.x).
- Buhmann M, Kroth PG, Schleheck D. 2012.** Photoautotrophic–heterotrophic biofilm communities: a laboratory incubator designed for growing axenic diatoms and bacteria in defined mixed-species biofilms. *Environmental Microbiology Reports* **4**:133–140 DOI [10.1111/j.1758-2229.2011.00315.x](https://doi.org/10.1111/j.1758-2229.2011.00315.x).
- Cantonati M, Angeli N, Virtanen L, Wojtal AZ, Gabrieli J, Falasco E, Lavoie I, Morin S, Marchetto A, Fortin C, Smirnova S. 2014.** *Achnantheidium minutissimum* (Bacillariophyta) valve deformities as indicators of metal enrichment in diverse widely-distributed freshwater habitats. *Science of The Total Environment* **475**:201–215 DOI [10.1016/j.scitotenv.2013.10.018](https://doi.org/10.1016/j.scitotenv.2013.10.018).
- Chandrasekaran S, Sweetman MJ, Kant K, Skinner W, Losic D, Nann T, Voelcker NH. 2014.** Silicon diatom frustules as nanostructured photoelectrodes. *Chemical Communications* **50**:10441–10444 DOI [10.1039/C4CC04470C](https://doi.org/10.1039/C4CC04470C).
- Crawford SA, Higgins MJ, Mulvaney P, Wetherbee R. 2001.** Nanostructure of the diatom frustule as revealed by atomic force and scanning electron microscopy. *Journal of Phycology* **37**:543–554 DOI [10.1046/j.1529-8817.2001.037004543.x](https://doi.org/10.1046/j.1529-8817.2001.037004543.x).
- Cyr H, Morton KE. 2006.** Distribution of biofilm exopolymeric substances in littoral sediments of Canadian Shield lakes: the effects of light and substrate. *Canadian Journal of Fisheries and Aquatic Sciences* **63**:1763–1776 DOI [10.1139/f06-079](https://doi.org/10.1139/f06-079).
- Czarnecki DB. 1994.** The freshwater diatoms culture collection at Loras College, Dubuque, Iowa. In: *Proceedings of the 11th international diatom symposium*, vol. 157. International Diatom Symposium. Memoirs of the California Academy of Sciences. San Francisco: California Academy of Sciences.

- Daniel GF, Chamberlain AHL, Jones EBG. 1987. Cytochemical and electron microscopical observations on the adhesive materials of marine fouling diatoms. *British Phycological Journal* 22:101–118 DOI 10.1080/00071618700650131.
- Falasco E, Bona F, Ginepro M, Hoffmann L, Ector L. 2009. Morphological abnormalities of diatom silica walls in relation to heavy metal contamination and artificial growth conditions. *Water SA* 35:595–606 DOI 10.4314/wsa.v35i5.49185.
- Field CB, Behrenfeld MJ, Randerson JT, Falkowski P. 1998. Primary production of the biosphere: integrating terrestrial and oceanic components. *Science* 281:237–240 DOI 10.1126/science.281.5374.237.
- Gardner KH, Blackwell J. 1971. The substructure of crystalline cellulose and chitin microfibrils. *Journal of Polymer Science Part C: Polymer Symposia* 36:327–340 DOI 10.1002/polc.5070360124.
- Geitler L. 1932. Der Formwechsel der pennaten Diatomeen (Kieselalgen). *Archiv für Protistenkunde* 78:1–226.
- Geitler L. 1977. Entwicklungsgeschichtliche Eigentümlichkeiten einiger *Achnanthes*-Arten (Diatomeae). *Plant Systematics and Evolution* 126:377–392 DOI 10.1007/BF00986291.
- Gordon R, Drum RW. 1970. A capillarity mechanism for diatom gliding locomotion. *Proceedings of the National Academy of Sciences* 67:338–344 DOI 10.1073/pnas.67.1.338.
- Guerra MBB, Schaefer CEGR, de Carvalho GGA, de Souza PF, Júnior DS, Nunes LC, Krug FJ. 2013. Evaluation of micro-energy dispersive X-ray fluorescence spectrometry for the analysis of plant materials. *Journal of Analytical Atomic Spectrometry* 28:1096–1101 DOI 10.1039/c3ja50084e.
- Herth W. 1979. The site of β -chitin fibril formation in centric diatoms. II. The chitin-forming cytoplasmic structures. *Journal of Ultrastructure Research* 68:16–27 DOI 10.1016/S0022-5320(79)90138-2.
- Higgins MJ, Sader JE, Mulvaney P, Wetherbee R. 2003. Probing the surface of living diatoms with atomic force microscopy: the nanostructure and nanomechanical properties of the mucilage layer. *Journal of Phycology* 39:722–734 DOI 10.1046/j.1529-8817.2003.02163.x.
- Hlubíková D, Ector L, Hoffmann L. 2011. Examination of the type material of some diatom species related to *Achnantheidium minutissimum* (Kütz.) Czarn. (Bacillariophyceae). *Algological Studies* 136:19–43 DOI 10.1127/1864-1318/2011/0136-0019.
- Hoagland KD, Rosowski JR, Gretz MR, Roemer SC. 1993. Diatom extracellular polymeric substances: function, fine structure, chemistry, and physiology. *Journal of Phycology* 29:537–566 DOI 10.1111/j.0022-3646.1993.00537.x.
- Johnson RE, Tuchman NC, Peterson CG. 1997. Changes in the vertical microdistribution of diatoms within a developing periphyton mat. *Journal of the North American Benthological Society* 16:503–519 DOI 10.2307/1468140.
- Kaplan JB, Fine DH. 2002. Biofilm dispersal of *Neisseria subflava* and other phylogenetically diverse oral bacteria. *Applied and Environmental Microbiology* 68:4943–4950 DOI 10.1128/AEM.68.10.4943-4950.2002.
- Krammer K, Lange-Bertalot H. 1991. *Süßwasserflora von Mitteleuropa, Bacillariophyceae. Achnantheaceae. Kritische Ergänzungen zu Navicula (Lineolatae) und Gomphonema*. Stuttgart: Gustav Fischer Verlag.
- Lewin JC. 1955. The Capsule of the Diatom *Navicula pelliculosa*. *Journal of General Microbiology* 13:162–169 DOI 10.1099/00221287-13-1-162.

- Lubarsky HV, Hubas C, Chocholek M, Larson F, Manz W, Paterson DM, Gerbersdorf SU. 2010. The stabilisation potential of individual and mixed assemblages of natural bacteria and microalgae. *PLoS ONE* 5:e13794 DOI 10.1371/journal.pone.0013794.
- MacDonald JD. 1869. On the structure of the Diatomaceous frustule, and its genetic cycle. *The Annals and Magazine of Natural History* 3:1–8 DOI 10.1080/00222936908695866.
- Mann DG. 1999. The species concept in diatoms. *Phycologia* 38:437–495 DOI 10.2216/i0031-8884-38-6-437.1.
- Mayama S, Kobayasi H. 1989. Sequential valve development in the monoraphid diatom *Achnanthes minutissima* Var. *Saprophila*. *Diatom Research* 4:111–117 DOI 10.1080/0269249X.1989.9705056.
- Molino PJ, Wetherbee R. 2008. The biology of biofouling diatoms and their role in the development of microbial slimes. *Biofouling* 24:365–379 DOI 10.1080/08927010802254583.
- Morin S, Coste M, Hamilton PB. 2008. Scanning electron microscopy observations of deformities in small pennate diatoms exposed to high cadmium concentrations. *Journal of Phycology* 44:1512–1518 DOI 10.1111/j.1529-8817.2008.00587.x.
- Murdock JN, Dodds WK, Reffner JA, Wetzel DL. 2010. Measuring cellular-scale nutrient distribution in algal biofilms with synchrotron confocal infrared microspectroscopy. *Spectroscopy* 25:32–41.
- Myklestad S, Holm-Hansen O, Vårum KM, Volcani BE. 1989. Rate of release of extracellular amino acids and carbohydrates from the marine diatom *Chaetoceros affinis*. *Journal of Plankton Research* 11:763–773 DOI 10.1093/plankt/11.4.763.
- Patrick R, Reimer CW. 1966. *The diatoms of the United States*. Philadelphia: Academy of Natural Sciences.
- Pfitzer E. 1871. *Untersuchungen über Bau und Entwicklung der Bacillariaceen (Diatomaceen)*. Marcus: University of Minnesota.
- Potapova M, Hamilton PB. 2007. Morphological and Ecological Variation Within the *Achnantheidium minutissimum* (bacillariophyceae) Species Complex. *Journal of Phycology* 43:561–575 DOI 10.1111/j.1529-8817.2007.00332.x.
- R Development Core Team. 2011. *R: a language and environment for statistical computing*. Vienna: R Foundation for Statistical Computing.
- Round FE, Bukhtiyarova L. 1996. Four new genera based on *Achnanthes* (*Achnantheidium*) together with a re-definition of *Achnantheidium*. *Diatom Research* 11:345–361 DOI 10.1080/0269249X.1996.9705389.
- Schlösser UG. 1994. SAG—Sammlung von Algenkulturen at the University of Göttingen Catalogue of Strains 1994. *Botanica Acta* 107:113–186 DOI 10.1111/j.1438-8677.1994.tb00784.x.
- Staats N, Stal LJ, de Winder B, Mur LR. 2000. Oxygenic photosynthesis as driving process in exopolysaccharide production of benthic diatoms. *Marine Ecology Progress Series* 193:261–269 DOI 10.3354/meps193261.
- Stewart PS. 2003. Diffusion in biofilms. *Journal of Bacteriology* 185:1485–1491 DOI 10.1128/JB.185.5.1485-1491.2003.
- Toyoda K, Idei M, Nagumo T, Tanaka J. 2005. Fine-structure of the vegetative frustule, perizonium and initial valve of *Achnanthes yaquinensis* (Bacillariophyta). *European Journal of Phycology* 40:269–279 DOI 10.1080/09670260500150511.
- Toyoda K, Williams DM, Tanaka J, Nagumo T. 2006. Morphological investigations of the frustule, perizonium and initial valves of the freshwater diatom *Achnanthes crenulata* Grunow (Bacillariophyceae). *Phycological Research* 54:173–182 DOI 10.1111/j.1440-1835.2006.00420.x.

- Wang Y, Chen Y, Lavin C, Gretz MR. 2000.** Extracellular matrix assembly in diatoms (Bacillariophyceae). IV. Ultrastructure of *Achnanthes longipes* and *Cymbella cistula* as revealed by high-pressure freezing/freeze substitution and cryo-field emission scanning electron microscopy. *Journal of Phycology* **36**:367–378 DOI [10.1046/j.1529-8817.2000.99102.x](https://doi.org/10.1046/j.1529-8817.2000.99102.x).
- Wang Y, Lu J, Mollet JC, Gretz MR, Hoagland KD. 1997.** Extracellular matrix assembly in diatoms (bacillariophyceae) II. 2,6-dichlorobenzonitrile inhibition of motility and stalk production in the marine diatom *Achnanthes longipes*. *Plant Physiology* **113**:1071–1080 DOI [10.1104/pp.113.4.1071](https://doi.org/10.1104/pp.113.4.1071).
- Wetherbee R, Lind JL, Burke J, Quatrano RS. 1998.** Minireview—the first kiss: establishment and control of initial adhesion by raphid diatoms. *Journal of Phycology* **34**:9–15 DOI [10.1046/j.1529-8817.1998.340009.x](https://doi.org/10.1046/j.1529-8817.1998.340009.x).
- Wickham H. 2009.** *ggplot2: elegant graphics for data analysis*. Springer Science & Business Media.
- Widdows J, Brinsley M. 2002.** Impact of biotic and abiotic processes on sediment dynamics and the consequences to the structure and functioning of the intertidal zone. *Journal of Sea Research* **48**:143–156 DOI [10.1016/S1385-1101\(02\)00148-X](https://doi.org/10.1016/S1385-1101(02)00148-X).
- Willis A, Chiovitti A, Dugdale TM, Wetherbee R. 2013.** Characterization of the extracellular matrix of *Phaeodactylum tricorutum* (Bacillariophyceae): structure, composition, and adhesive characteristics. *Journal of Phycology* **49**:937–949 DOI [10.1111/jpy.12103](https://doi.org/10.1111/jpy.12103).
- Windler M, Bova D, Kryvenda A, Straile D, Gruber A, Kroth PG. 2014.** Influence of bacteria on cell size development and morphology of cultivated diatoms. *Phycological Research* **62**:269–281. DOI [10.1111/pre.12059](https://doi.org/10.1111/pre.12059).
- Windler M, Gruber A, Kroth PG. 2012.** Purification of benthic diatoms from associated bacteria using the antibiotic imipenem. *Journal of Endocytobiosis and Cell Research* **22**:62–65 Available at http://zs.thulb.uni-jena.de/receive/jportal_jparticle_00273835.
- Windler M, Leinweber K, Rio Bartulos C, Philipp B, Kroth PG. 2015.** Biofilm and capsule formation of the diatom *Achnanthes minutissimum* are affected by a bacterium. *Journal of Phycology* Epub ahead of print March 17 2015. Available at <http://onlinelibrary.wiley.com/doi/10.1111/jpy.12280/abstract>.
- Wustman BA, Lind J, Wetherbee R, Gretz MR. 1998.** Extracellular matrix assembly in diatoms (bacillariophyceae) III. Organization of fucoglucuronogalactans within the adhesive stalks of *Achnanthes longipes*. *Plant Physiology* **116**:1431–1441 DOI [10.1104/pp.116.4.1431](https://doi.org/10.1104/pp.116.4.1431).