



**OPEN** **Publisher Correction: A link between appendectomy and gastrointestinal cancers: a large-scale population-based cohort study in Korea**

Youn Young Park, Kil-yong Lee, Seong Taek Oh, Sang Hyun Park, Kyung Do Han & Jaeim Lee

Correction to: *Scientific Reports* <https://doi.org/10.1038/s41598-020-72770-5>, published online 24 September 2020

The original version of this Article contained a typographical error in the spelling of the author Youn Young Park, which was incorrectly given as You Young Park.

Secondly, the Abstract contained an error.

Appendectomy did not significantly increase the incidence of GI cancers in the overall population (1.529 and 1.557 per 1000 person-years in the non-appendectomy and appendectomy cohorts, respectively)

now reads:

Appendectomy did not significantly increase the incidence of GI cancers in the overall population (1.529 and 1.557 per 1000 person-years in the non-appendectomy and appendectomy cohorts, respectively).

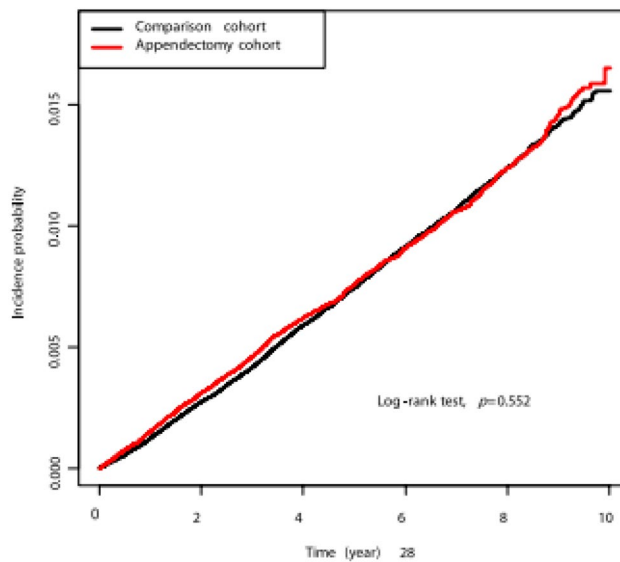
Furthermore, Figure 2 contained an error.

The incorrect Figure 2 appears below as Figure 1.

Lastly, the Data Availability statement was incorrectly given as Funding information.

These errors have now been corrected in the PDF and HTML versions of the Article.

Published online: 17 March 2021



**Figure 1.** Kaplan–Meier curves of incidence probability for gastrointestinal cancers according to appendectomy in the overall population.



**Open Access** This article is licensed under a Creative Commons Attribution 4.0 International License, which permits use, sharing, adaptation, distribution and reproduction in any medium or format, as long as you give appropriate credit to the original author(s) and the source, provide a link to the Creative Commons licence, and indicate if changes were made. The images or other third party material in this article are included in the article's Creative Commons licence, unless indicated otherwise in a credit line to the material. If material is not included in the article's Creative Commons licence and your intended use is not permitted by statutory regulation or exceeds the permitted use, you will need to obtain permission directly from the copyright holder. To view a copy of this licence, visit <http://creativecommons.org/licenses/by/4.0/>.

© The Author(s) 2021