

RESEARCH ARTICLE

Severe persistent hypocholesterolemia after emergency gastrointestinal surgery predicts in-hospital mortality in critically ill patients with diffuse peritonitis

Seung Hwan Lee^{1,2}, Jin Young Lee³, Tae Hwa Hong⁴, Bo Ok Kim⁵, Yeon Ju Lee², Jae Gil Lee^{1,2*}

1 Department of Surgery, Yonsei University College of Medicine, Seoul, Republic of Korea, **2** Trauma Training Center, Severance Hospital, Yonsei University Health System, Seoul, Republic of Korea, **3** Department of Trauma Surgery, Trauma Center, Chungbuk National University Hospital, Cheongju, Republic of Korea, **4** Department of Surgery, Hallym University Sacred Heart Hospital, Hallym University College of Medicine, Anyang, Republic of Korea, **5** Department of Research Affairs, Biostatistics Collaboration Unit, Yonsei University College of Medicine, Seoul, Republic of Korea

* jakii@yuhs.ac



OPEN ACCESS

Citation: Lee SH, Lee JY, Hong TH, Kim BO, Lee YJ, Lee JG (2018) Severe persistent hypocholesterolemia after emergency gastrointestinal surgery predicts in-hospital mortality in critically ill patients with diffuse peritonitis. PLoS ONE 13(7): e0200187. <https://doi.org/10.1371/journal.pone.0200187>

Editor: Leonidas G. Koniaris, Indiana University, UNITED STATES

Received: June 2, 2017

Accepted: June 21, 2018

Published: July 6, 2018

Copyright: © 2018 Lee et al. This is an open access article distributed under the terms of the [Creative Commons Attribution License](https://creativecommons.org/licenses/by/4.0/), which permits unrestricted use, distribution, and reproduction in any medium, provided the original author and source are credited.

Data Availability Statement: All relevant data are within the paper and its Supporting Information files.

Funding: The authors received no specific funding for this work.

Competing interests: The authors have declared that no competing interests exist.

Abstract

Background

Plasma cholesterol acts as a negative acute phase reactant. Total cholesterol decreases after surgery and in various pathological conditions, including trauma, sepsis, burns, and liver dysfunction. This study aimed to determine whether hypocholesterolemia after emergency gastrointestinal (GI) surgery is associated with in-hospital mortality in patients with diffuse peritonitis.

Methods

The medical records of 926 critically ill patients who had undergone emergency GI surgery for diffuse peritonitis, between January 2007 and December 2015, were retrospectively analyzed. The integrated areas under the curve (iAUCs) were calculated to compare the predictive accuracy of total cholesterol values from postoperative days (PODs) 0, 1, 3, and 7. Cox proportional hazard regression modeling was performed for all possible predictors identified in the univariate and multivariable analyses.

Results

The total cholesterol level measured on POD 7 had the highest iAUC (0.7292; 95% confidence interval, 0.6696–0.7891) and was significantly better at predicting in-hospital mortality than measurements on other days. The optimal total cholesterol cut-off value for predicting in-hospital mortality was 61 mg/dL and was determined on POD 7. A Cox proportional hazard regression analysis revealed that a POD 7 total cholesterol level < 61 mg/dL was an independent predictor of in-hospital mortality after emergency GI surgery (hazard ratio, 3.961; 95% confidence interval, 1.786–8.784).

Conclusion

Severe persistent hypocholesterolemia (<61 mg/dL) on POD 7 independently predicted in-hospital mortality, after emergency GI surgery, in critically ill patients with diffuse peritonitis.

Introduction

In complicated intra-abdominal infections (cIAIs), the infectious process extends beyond the organ and may cause either localized or diffuse peritonitis [1]. In particular, diffuse peritonitis is an important cause of morbidity and may be associated with a poor prognosis. The early prognostic evaluation and detection of diffuse peritonitis are crucial for the assessment of disease severity and the delivery of optimal treatment [2]. Many factors that influence the prognoses of patients with diffuse peritonitis have been described, including advanced age, poor nutritional status, pre-existing illness, immunosuppression, extended peritonitis, presence of septic shock, inadequate source control, organ failure, and nosocomial infection [2–9]. Moreover, a recent report by Suarez-de-la-Rica et al. described an investigation of certain biomarkers (procalcitonin, C reactive protein, and lactate) as predictors of mortality in surgical patients with diffuse peritonitis [10].

However, the use of biochemical parameters as predictors of clinical outcomes in diffuse peritonitis has not yet been sufficiently studied. Some biochemical parameters, directly or indirectly, reflect the host response and infection severity. In 1926, Thannhauser and Schaber reported an association between low cholesterol levels and disease [11]. Subsequently, total cholesterol levels have been shown to be substantially reduced in various pathological conditions, including infections, burns, and cancer. Although hypocholesterolemia is anecdotally considered as a marker of malnutrition, plasma cholesterol levels are known to decrease after surgery, trauma, and acute hemorrhage, as well as during sepsis and liver dysfunction [12–15]. Several studies have specifically focused on the relationship between low cholesterol levels and sepsis [16–18]. However, the critical cholesterol level and the association of hypocholesterolemia duration with mortality in surgical patients with diffuse peritonitis remain unclear.

The present study investigated the association between hypocholesterolemia after emergency gastrointestinal (GI) surgery and in-hospital mortality among patients with diffuse peritonitis.

Materials and methods

Patients

The medical records of critically ill patients (≥ 18 years old) who had undergone emergency surgery for diffuse peritonitis at Severance Hospital, Yonsei University College of Medicine, Seoul, Republic of Korea, between January 2007 and December 2015, were retrospectively reviewed. Patients with diffuse peritonitis due to GI perforation, anastomotic leakage, intestinal strangulation, and acute mesenteric ischemia were included. Patients who had undergone surgery for acute appendicitis, acute cholecystitis, or necrotizing pancreatitis were excluded. Most patients with acute appendicitis or acute cholecystitis were excluded due to the presence of localized peritonitis, and patients with necrotizing pancreatitis requiring repeated surgery were excluded to maintain study population homogeneity. We also excluded patients who died within the first 7 days after surgery. Finally, we excluded patients with total cholesterol levels that were not measured before surgery, immediately after surgery, or on postoperative days (PODs) 1, 3, or 7 (Fig 1). This study was approved by the Severance Institutional Review

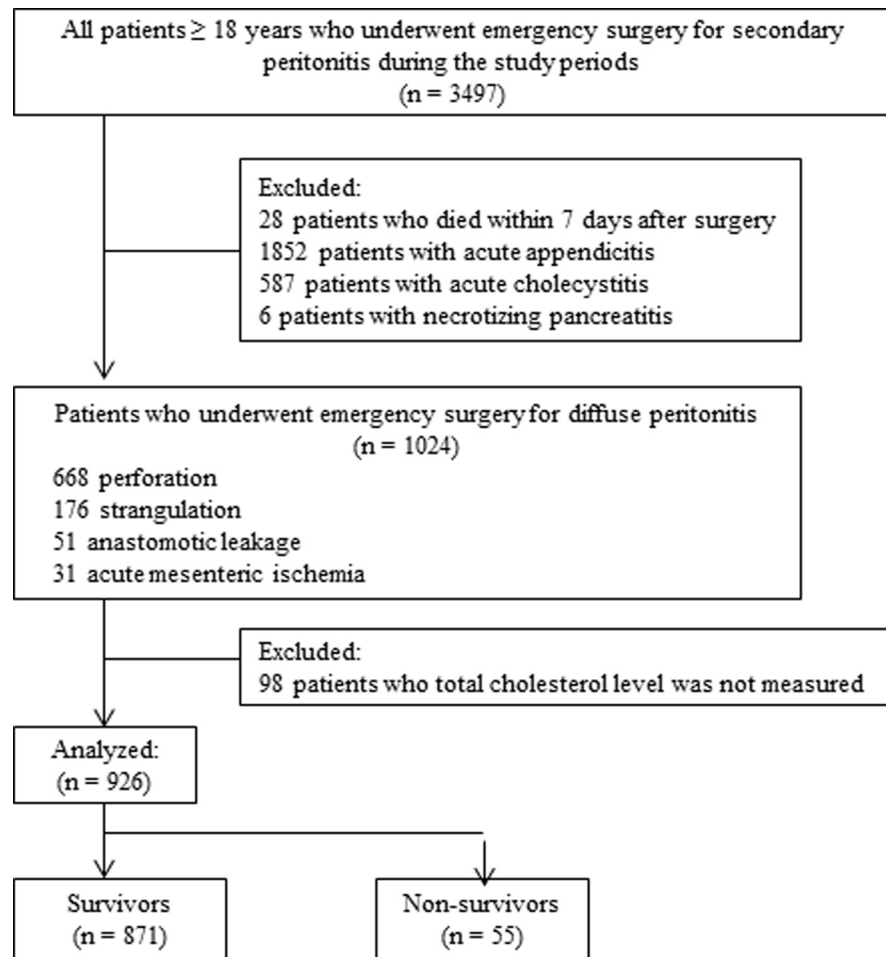


Fig 1. Flow diagram of the patient selection process.

<https://doi.org/10.1371/journal.pone.0200187.g001>

Board (IRB No. 4-2016-0177), which waived the requirement for informed consent due to the retrospective nature of the study.

Perioperative variables

The following variables were included in the analysis: age, sex, body mass index, American Society of Anesthesiologists physical status classification, Acute Physiology and Chronic Health Evaluation II (APACHE II) score, comorbidities, lesion location, diagnosis, perioperative shock, preoperative blood cultures, intraoperative peritoneal fluid cultures, preoperative laboratory findings, postoperative complications, and surgery type. Perioperative shock was septic shock occurring before, during, or after surgery, and was defined as sepsis-induced hypotension persisting despite adequate fluid resuscitation [19]. All surgeries were performed within a maximum of 12 hours after diagnosis. Pulmonary complications were defined as the presence of one or more of the following postoperative conditions: pneumonia, atelectasis, pleural effusion, or acute respiratory distress syndrome. Anastomotic leakage was defined as clinical signs of leakage, such as the presence of a fecaloid drain; emission of fecal material from the wound; contrast extravasation during an enema; evidence of postoperative peritonitis during surgery; or fluid collection or air in the anastomotic region, as seen using computed

tomography. Wound complications were defined as the presence of a wound infection, including superficial incisional surgical site infection (SSI); deep incisional SSI; organ/space SSI, according to the definition proposed by the Centers for Disease Control and Prevention (Atlanta, GA, USA); or wound dehiscence [20]. Postoperative acute kidney injury (AKI) was defined according to the Risk, Injury, Failure, Loss and End-Stage Renal Disease (RIFLE) definition, using only serum creatinine changes (i.e., without urine output criteria). RIFLE defines AKI based on a $\geq 50\%$ change in serum creatinine levels from a reference value, while also accounting for patients with documented chronic kidney disease at the time of admission. Postoperative ileus was defined as a non-mechanical obstruction lasting > 5 days or reinsertion of the nasogastric tube within the first 5 days, and was confirmed using simple abdominal radiography. Newly developed sepsis was defined as sepsis diagnosed in patients who did not initially demonstrate sepsis or septic shock or in patients who were again diagnosed with sepsis during a period of stability or improvement after a previous septic episode (e.g., sepsis, severe sepsis, or septic shock).

Laboratory variables

Among the collected laboratory variables, total cholesterol levels (reference range, 142–240 mg/dL) measured before surgery, immediately after surgery, and on PODs 1, 3, and 7 were analyzed.

Outcome parameters

The primary outcome investigated using Cox regression analysis was in-hospital mortality, which was defined as death occurring during hospitalization after the emergency GI surgery.

Statistical analysis

Prior to the statistical analysis, data normality was tested using the Shapiro–Wilk test. Categorical variables are presented as numbers (%) and were compared, between groups, using the chi-square test. Continuous variables are expressed as means \pm standard deviations and were compared, between groups, using Student's *t*-test. Any differences in the total cholesterol levels between survivors and nonsurvivors were evaluated using repeated measures analysis of variance (ANOVA), followed by Tukey's post-hoc test. The time-dependent receiver operating characteristic (ROC) curve method was used to compare the predictive accuracy of the total cholesterol measurements, each day, on in-hospital mortality [21]. We compared the integrated areas under the curve (iAUCs) for each total cholesterol measurement. The iAUC is a weighted average of areas under the curve across the follow-up period and is a measure of the predictive accuracy of the total cholesterol level on each measurement day during follow-up; higher iAUCs indicate better predictive accuracy. Differences in iAUC values across the five total cholesterol measurement days were calculated using a bootstrapping method, resampling 1000 times. The Contal and O'Quigley method, based on the log-rank test, was used to determine the cut-off value for the most useful cholesterol level predicting in-hospital mortality [22]. Survival curves were constructed using the Kaplan–Meier method and compared using the log-rank test. A Cox proportional hazards model was used to investigate predictors of in-hospital mortality. Factors with a *P*-value < 0.05 in the univariate Cox regression analysis were considered as potential predictors, and were selected for the multivariable regression analysis. The hazard ratios (HRs) are shown with 95% confidence intervals (CIs), and *P*-values < 0.05 were considered statistically significant. Statistical analyses were conducted using SPSS version 20.0.0 (IBM; Armonk, NY, USA), SAS version 9.2 (SAS Institute; Cary, NC, USA), and R version 3.1.3 (<http://www.R-project.org/>).

Results

A total of 3497 adult patients underwent emergency surgery for secondary peritonitis, between January 2007 and December 2015, and were screened for this analysis; 926 were included in the present study. The mean patient age was 59.7 ± 16.1 years; 581 patients (62.7%) were male. A total of 83 patients (8.7%), including 28 patients who died within the first 7 days, died during the postoperative hospital stay. The mean time between surgery and death was 26.0 ± 18.7 days. The most common cause of diffuse peritonitis was perforations (72.1%) of the GI tract, and predominantly resulted from pathological changes in the large (colon and rectum, 44.0%) and small (40.8%) bowels. Preoperative total cholesterol levels were significantly higher in survivors than in nonsurvivors (138.3 ± 48.3 mg/dL versus 106.0 ± 48.8 mg/dL, $P < 0.001$). The primary surgical procedures were primary repair (25.5%), small bowel resection with anastomosis (23%), enterostomy (15.8%), colostomy (15.8%), colorectal resection with anastomosis (14.6%), and subtotal or total gastrectomy (5.4%). Other baseline characteristics are shown in [Table 1](#).

Among nonsurvivors, total cholesterol levels decreased markedly on POD 1 and continued to gradually decrease until POD 7. However, among survivors, total cholesterol levels only decreased until POD 1 and then gradually increased until POD 7. Repeated-measures ANOVA indicated that the changes in total cholesterol level over time were significantly different between the two groups (Greenhouse-Geisser corrected, $P < 0.001$; [Fig 2](#)). The results of the time-dependent ROC curve analysis, over the course of the hospital stay, are shown in [Fig 3](#). Of the 5 measurement days, the total cholesterol levels measured on POD 7 had the highest iAUC value; the iAUC values were significantly different between POD 7 and all other days (day before surgery, immediately after surgery, POD 1, and POD 3).

The estimated differences in iAUCs, relative to POD 7, were -0.1902 (95% CI, -0.2691 to -0.0966, preoperative), -0.1586 (95% CI, -0.2525 to -0.0658, immediately after surgery), -0.1404 (95% CI, -0.2350 to -0.0421, POD 1), and -0.0954 (95% CI, -0.1870 to -0.0055, POD 3), indicating significantly better prediction of in-hospital mortality using cholesterol values measured on POD 7 than for any other day ([Table 2](#)). Thereafter, using the Contal and O'Quigley method, the optimal POD 7 total cholesterol cut-off value for predicting in-hospital mortality was 61 mg/dL.

The cumulative patient survival, stratified by total cholesterol level ≥ 61 mg/dL and < 61 mg/dL on POD 7, is shown in [Fig 4](#); the cumulative survival of patients with a total cholesterol level of ≥ 61 mg/dL on POD 7 was significantly better than that of those with a total cholesterol level of < 61 mg/dL ($P < 0.0001$).

Perioperative variables, including the POD 7 total cholesterol level, were assessed for association with in-hospital mortality using univariate and multivariable Cox regression analyses. The results revealed that a total cholesterol level < 61 mg/dL on POD 7 (HR, 3.961; 95% CI, 1.786–8.784), a lower platelet count before surgery, and the presence of newly developed sepsis were independent predictors of in-hospital mortality after emergency GI surgery ([Table 3](#)).

Discussion

cIAs are important causes of morbidity and poor clinical prognoses. In a recent study, the overall mortality rate for patients with cIAs was 10.1% (4% in patients with localized peritonitis and 18% in patients with diffuse peritonitis) [1]. In the present study, the mortality rate for patients with diffuse peritonitis was 8.7%. Despite advances in diagnostic tools, surgical management, intensive medical care, and antimicrobial therapy, the prognosis for patients with diffuse peritonitis remains poor.

Table 1. Baseline characteristics of the total population.^a

| Characteristic | Total (n = 926) | Survivors (n = 871) | Non-survivors (n = 55) | P-value |
|---|-----------------|---------------------|------------------------|---------|
| Age, mean (SD), y | 59.7 ± 16.1 | 59.6 ± 16.2 | 62.1 ± 14.6 | 0.246 |
| Sex | | | | |
| Male | 581 (62.7) | 548 (62.9) | 33 (60.0) | 0.664 |
| Female | 345 (37.3) | 323 (37.1) | 22 (40.0) | |
| BMI, mean (SD), kg/m ² | 21.9 ± 3.5 | 22.0 ± 3.5 | 21.5 ± 3.5 | 0.286 |
| Comorbidity | | | | |
| Hypertension | 307 (33.2) | 285 (32.7) | 22 (40.0) | 0.266 |
| DM | 131 (14.1) | 123 (14.1) | 8 (14.5) | 0.93 |
| CRF | 51 (5.5) | 41 (4.7) | 10 (18.2) | <0.001 |
| Pulmonary tuberculosis | 61 (6.6) | 58 (6.7) | 3 (5.5) | 0.727 |
| Malignancy | 485 (52.4) | 449 (51.5) | 36 (65.5) | 0.045 |
| ASA score | 2.0 ± 0.9 | 2.0 ± 0.9 | 2.4 ± 1.2 | 0.03 |
| APACHE II score | 20.7 ± 8.2 | 19.9 ± 7.8 | 27.1 ± 8.8 | <0.001 |
| Location of lesion | | | | |
| Stomach | 141 (15.2) | 133 (15.3) | 8 (14.5) | 0.957 |
| Duodenum | 61 (6.6) | 58 (6.7) | 3 (5.5) | |
| Jejunum and ileum | 317 (34.2) | 299 (34.3) | 18 (32.7) | |
| Colon and rectum | 407 (44.0) | 381 (43.7) | 26 (47.3) | |
| Diagnosis | | | | |
| Perforation | 668 (72.1) | 626 (71.9) | 42 (76.4) | 0.316 |
| Strangulation | 176 (19.0) | 170 (19.5) | 6 (10.9) | |
| Anastomotic leakage | 51 (5.5) | 46 (5.3) | 5 (9.1) | |
| Acute mesenteric ischemia | 31 (3.3) | 29 (3.3) | 2 (3.6) | |
| Perioperative shock | 226 (24.4) | 186 (21.4) | 40 (72.7) | <0.001 |
| Type of procedure | | | | |
| Primary repair | 236 (25.5) | 224 (25.7) | 12 (21.8) | 0.783 |
| Small bowel resection with anastomosis | 213 (23.0) | 201 (23.1) | 12 (21.8) | |
| Ileo- or jejunostomy | 146 (15.8) | 134 (15.4) | 12 (21.8) | |
| Hartmann's procedures or colostomy | 146 (15.8) | 136 (15.6) | 10 (18.2) | |
| Colon resection with anastomosis | 135 (14.6) | 129 (14.8) | 6 (10.9) | |
| Gastrectomy (subtotal or total) | 50 (5.4) | 47 (5.4) | 3 (5.5) | |
| Culture positive | | | | |
| Preoperative blood | 46 (8.8) | 38 (7.9) | 8 (20.5) | 0.008 |
| Intraoperative peritoneal fluid | 271 (63.9) | 232 (61.5) | 39 (83.0) | 0.004 |
| Preoperative laboratory findings | | | | |
| Hemoglobin, mean (SD), g/dL | 11.9 ± 2.5 | 12.1 ± 2.4 | 10.5 ± 2.3 | <0.001 |
| Platelets, mean (SD), 10 ³ /μL | 269.3 ± 132.0 | 274.2 ± 129.9 | 196.5 ± 142.7 | <0.001 |
| Albumin, mean (SD), g/dL | 3.4 ± 0.7 | 3.4 ± 0.7 | 2.7 ± 0.6 | <0.001 |
| Total bilirubin, mean (SD), mg/dL | 1.2 ± 1.0 | 1.0 ± 0.9 | 1.5 ± 1.2 | 0.006 |
| Total cholesterol, mean (SD), mg/dL | 136.1 ± 49.0 | 138.3 ± 48.3 | 106.0 ± 48.8 | <0.001 |
| CRP, mean (SD), mg/L | 96.3 ± 90.6 | 95.8 ± 89.1 | 111.3 ± 102.8 | 0.257 |
| Postoperative complications | | | | |
| Anastomotic leakage | 55 (5.9) | 42 (4.8) | 13 (23.6) | <0.001 |
| Wound complication | 185 (20.0) | 170 (19.5) | 15 (27.3) | 0.163 |
| Newly developed sepsis | 59 (6.4) | 30 (3.4) | 29 (52.7) | <0.001 |
| Pulmonary complication | 187 (20.2) | 150 (17.2) | 37 (67.3) | <0.001 |

(Continued)

Table 1. (Continued)

| Characteristic | Total (n = 926) | Survivors (n = 871) | Non-survivors (n = 55) | P-value |
|---------------------|-----------------|---------------------|------------------------|---------|
| Acute kidney injury | 124 (13.4) | 93 (10.7) | 31 (56.4) | <0.001 |
| Ileus | 132 (14.3) | 116 (13.3) | 16 (29.1) | 0.001 |

SD, standard deviation; DM, diabetes mellitus; CRF, chronic renal failure; ASA, American Society of Anesthesiologists physical status classification; APACHE II, Acute Physiology and Chronic Health Evaluation II; CRP, C-reactive protein.

^a Data are presented as numbers (percentage) of patients unless otherwise indicated.

<https://doi.org/10.1371/journal.pone.0200187.t001>

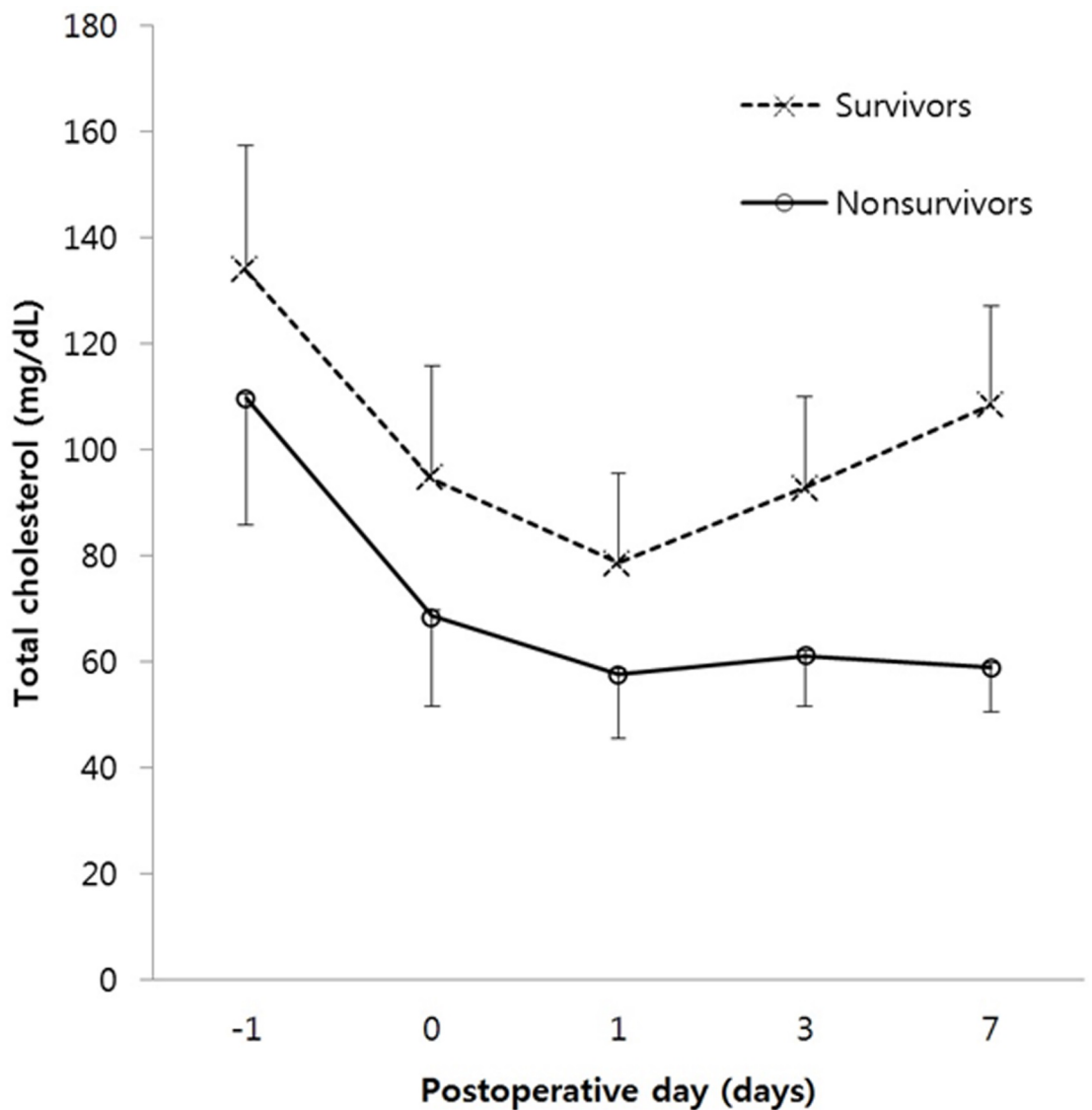


Fig 2. Comparison of the changes in total cholesterol levels between survivors and nonsurvivors. The time variations in total cholesterol levels were significantly different between survivors and nonsurvivors (Greenhouse-Geisser corrected, $P < 0.001$, using repeated-measures analysis of variance).

<https://doi.org/10.1371/journal.pone.0200187.g002>

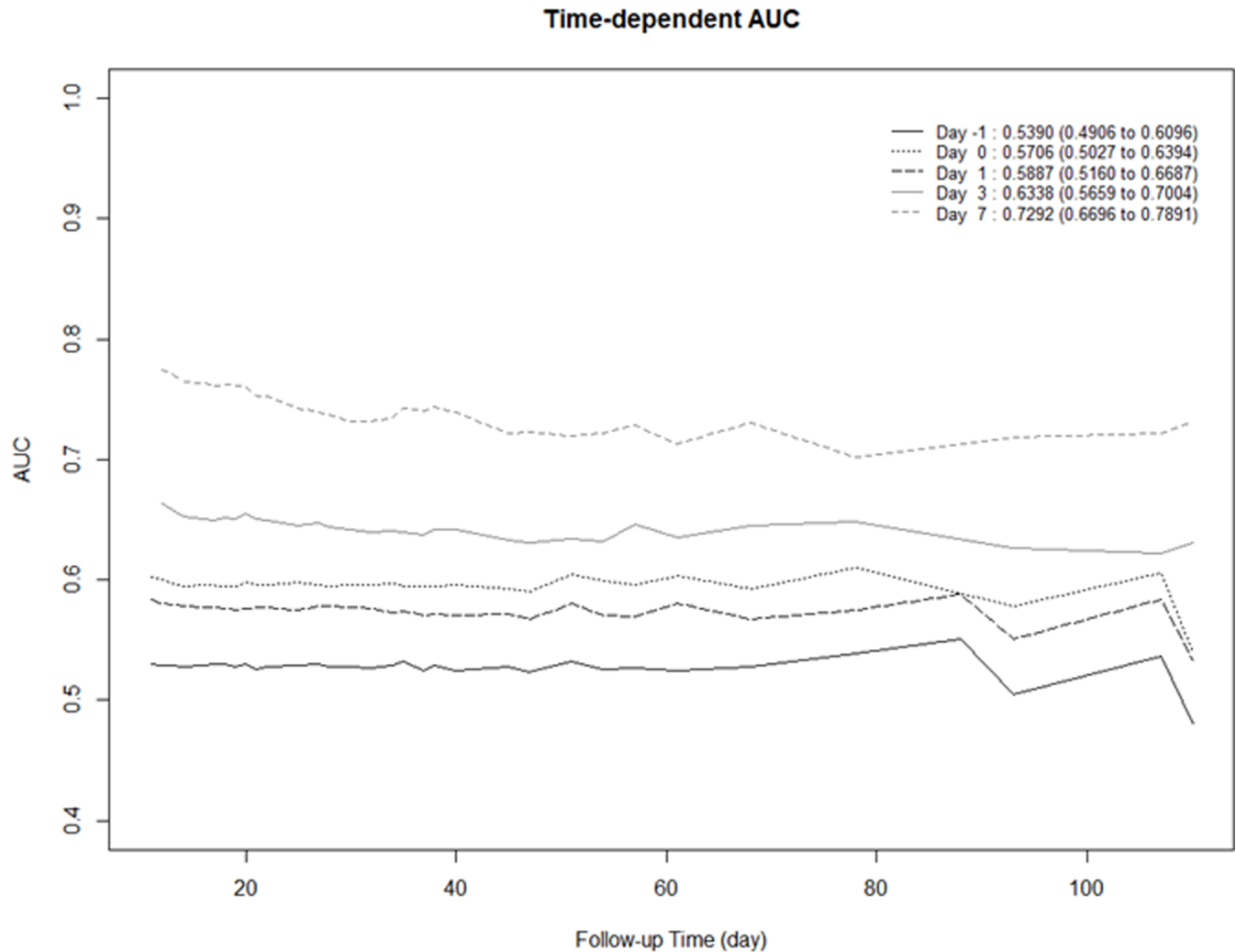


Fig 3. Time-dependent receiver operating curve analysis to evaluate the predictive accuracy of each measurement day. Results in the top right-hand corner of the figure indicate the integrated area under the curve (iAUC) and 95% confidence interval. The iAUC is a measure of the predictive accuracy for in-hospital mortality on each measurement day. The cholesterol level measured on postoperative day 7 had the highest iAUC.

<https://doi.org/10.1371/journal.pone.0200187.g003>

For this reason, over the past three decades, several scoring systems have been developed to determine the prognosis of patients with peritonitis, including the Mannheim Peritonitis Index (MPI) [23]. Prognostic factors have also been investigated as predictors of mortality in patients with diffuse peritonitis [24,25]. To our knowledge, only one study has retrospectively evaluated the association between preoperative total cholesterol levels and mortality in patients who had undergone emergency GI surgery for IAIs. The main emphasis of that study was a determination of the significance of the APACHE II scores and the MPI values as independent indicators of prognosis in patients with IAIs; preoperative hypocholesterolemia was included among the independent predictors of death [4].

In the present study, the total cholesterol levels had decreased markedly by POD 1 among both survivors and nonsurvivors. Thereafter, the total cholesterol levels in the survivors increased until POD 7, whereas those levels in the nonsurvivors remained persistently low between PODs 1 and 7. More importantly, when the total cholesterol iAUC values were compared among measurement days, the total cholesterol level on POD 7 was significantly better

Table 2. Estimated iAUC differences using a bootstrapping method.

| Difference | iAUC (95% CI) |
|---------------------|------------------------------|
| Pre-OP versus POD 0 | -0.0316 (-0.1175 to 0.0600) |
| Pre-OP versus POD 1 | -0.0497 (-0.1454 to 0.0490) |
| Pre-OP versus POD 3 | -0.0948 (-0.1830 to -0.0023) |
| Pre-OP versus POD 7 | -0.1902 (-0.2691 to -0.0966) |
| POD 0 versus POD 1 | -0.0182 (-0.1194 to 0.0856) |
| POD 0 versus POD 3 | -0.0632 (-0.1639 to 0.0349) |
| POD 0 versus POD 7 | -0.1586 (-0.2525 to -0.0658) |
| POD 1 versus POD 3 | -0.0451 (-0.1399 to 0.0616) |
| POD 1 versus POD 7 | -0.1404 (-0.2350 to -0.0421) |
| POD 3 versus POD 7 | -0.0954 (-0.1870 to -0.0055) |

Pre-OP, preoperative; POD, postoperative day; CI, confidence interval; iAUC, integrated area under the curve.

<https://doi.org/10.1371/journal.pone.0200187.t002>

at predicting in-hospital mortality than measurements on other days, with an optimal cut-off value of 61 mg/dL. Recent studies have reported that severe persistent hypocholesterolemia (<50–60 mg/dL) is associated with severe illness, sepsis, and poor outcomes in postoperative patients. Furthermore, serial changes in the degree of hypocholesterolemia, over time, are useful for evaluating progressive recovery or the occurrence of complications and persistent illness in surgical patients [18,26]. A previous study of patients with sepsis and organ failure, after partial hepatectomy, found that patients did not survive if they had severe hypocholesterolemia (<58 mg/dL) for more than 6 days [13]. Thus, the present results are in accordance with the reports that document the crucial changes in cholesterol levels during the postoperative period.

Interestingly, plasma cholesterol behaves as a negative acute phase reactant [17]. It substantially decreases after trauma, acute hemorrhage, and surgery, as well as in cancer, sepsis, burn injuries, and liver dysfunction [12–15, 27–30]. Some researchers have hypothesized that low lipoprotein cholesterol levels impair the body’s ability to bind and neutralize lipopolysaccharide (LPS), allowing more LPS to be available for inducing harmful inflammation [29, 31–33]. However, analyses of LPS-lipoprotein interactions in the serum of critically ill patients have not been reported. Thus, how hypocholesterolemia might affect the innate immune responses and inflammation in these patients remains uncertain [34]. Previous studies have reported on hypocholesterolemia mechanisms, such as impaired cholesterol synthesis or hemodilution from blood loss [15,27,28,30,35–39]. Hypocholesterolemia also arises due to the combined action of multiple factors. Moreover, the degree of hypocholesterolemia may cumulatively reflect illness severity [18,38,39].

Although hypocholesterolemia is known to be a prognostic marker of increased morbidity and mortality associated with various pathological conditions [40], its impact on the in-hospital mortality of patients undergoing emergency GI surgery for diffuse peritonitis has not been previously reported. In the present study, hypocholesterolemia (<61 mg/dL) on POD 7 was significantly associated with in-hospital mortality in patients with diffuse peritonitis. The cumulative survival of patients with total cholesterol levels of ≥ 61 mg/dL on POD 7 was significantly better than that for those with total cholesterol levels < 61 mg/dL on POD 7, indicating that a total cholesterol level < 61 mg/dL on POD 7 is a significant predictor of in-hospital mortality.

However, to provide clinically meaningful information, a potential predictor should be measured as early as possible, before the occurrence of any clinical events, such as postoperative complications. Interestingly, the present study also showed that the total cholesterol level,

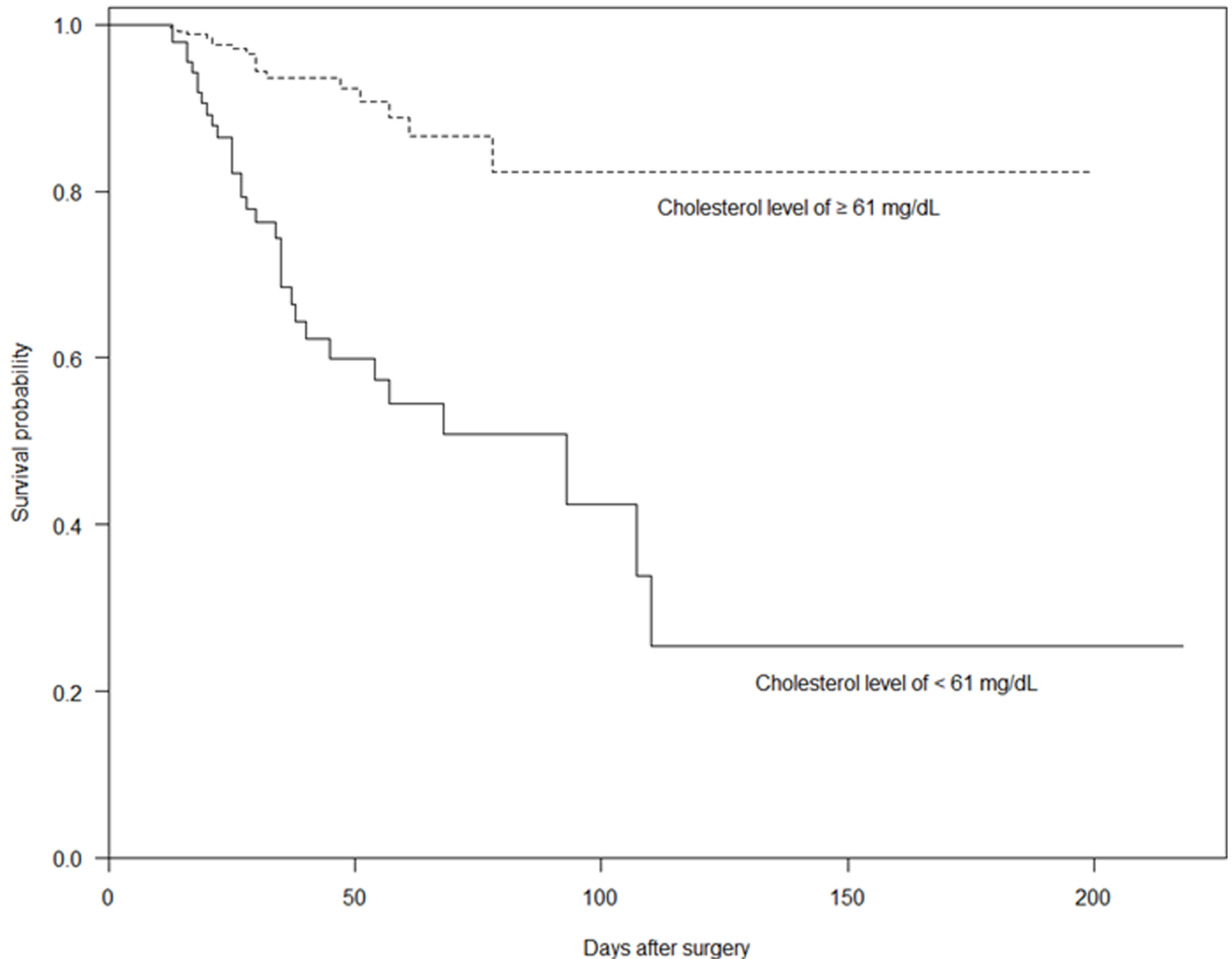


Fig 4. Kaplan–Meier curve based on hypocholesterolemia severity (total cholesterol level ≥ 61 mg/dL versus total cholesterol level < 61 mg/dL; log-rank test, $P < 0.0001$).

<https://doi.org/10.1371/journal.pone.0200187.g004>

measured on POD 3, significantly predicted in-hospital mortality after emergency GI surgery. This suggests that hypocholesterolemia can be used to predict early in-hospital mortality, before postoperative clinical events occur.

Multivariable analysis identified low platelet counts, newly developed sepsis, and total cholesterol < 61 mg/dL as significant predictors of in-hospital mortality after emergency GI surgery. Recent studies have reported that thrombocytopenia, after admission, is a predictor of multiple-organ failure after injury [41,42]. Moreover, thrombocytopenia is frequently accompanied by critical illness and is used as a marker of hematological organ system dysfunction. In addition, newly developed sepsis, rather than perioperative sepsis, was associated with in-hospital mortality after emergency GI surgery, in our study. This may be explained by the inclusion of repeat and late-onset sepsis, which are associated with higher mortality rates; however, the precise mechanism of this association remains unclear. Although low platelet counts and newly developed sepsis were independently associated with in-hospital mortality, we found

Table 3. Univariate and multivariable Cox proportional hazards model for in-hospital mortality.

| Characteristics | Univariate analysis | | Multivariate analysis | |
|---|---------------------|---------|-----------------------|---------|
| | HR (95% CI) | P-value | HR (95% CI) | P-value |
| Age | 1.009 (0.991–1.027) | 0.3310 | | |
| Sex | | | | |
| Female | Ref. | | | |
| Male | 1.000 (0.582–1.719) | >0.9999 | | |
| BMI | 0.977 (0.911–1.047) | 0.5104 | | |
| Comorbidity | 2.003 (1.001–4.008) | 0.0495 | | |
| Hypertension | 1.040 (0.605–1.787) | 0.8872 | | |
| DM | 0.708 (0.334–1.503) | 0.3688 | | |
| CRF | 2.003 (1.001–4.008) | 0.0495 | 1.462 (0.492–4.345) | 0.4946 |
| Pulmonary tuberculosis | 0.627 (0.196–2.009) | 0.4319 | | |
| Malignancy | 1.337 (0.766–2.333) | 0.3065 | | |
| ASA score | 1.151 (0.902–1.469) | 0.2586 | | |
| APACHE II score | 1.071 (1.036–1.108) | <0.0001 | 1.024 (0.977–1.074) | 0.3139 |
| Location of lesion | | | | |
| Stomach | Ref. | | | |
| Duodenum | 0.662 (0.175–2.500) | 0.5429 | | |
| Jejunum and ileum | 0.701 (0.305–1.613) | 0.4034 | | |
| Colon and rectum | 0.786 (0.356–1.737) | 0.5515 | | |
| Diagnosis | | | | |
| Perforation | Ref. | | | |
| Strangulation | 0.709 (0.301–1.670) | 0.4318 | | |
| Anastomotic leakage | 0.588 (0.142–2.436) | 0.4641 | | |
| Acute mesenteric ischemia | 1.056 (0.415–2.685) | 0.9091 | | |
| Perioperative shock (t) ^a | 0.348 (0.126–0.958) | 0.0411 | 1.250 (0.975–1.603) | 0.0783 |
| Culture positive | | | | |
| Preoperative blood | 2.624 (1.199–5.742) | 0.0158 | 1.878 (0.708–4.984) | 0.2054 |
| Intraoperative peritoneal fluid | 1.366 (0.636–2.934) | 0.4241 | | |
| Preoperative laboratory findings | | | | |
| Hemoglobin | 0.935 (0.825–1.059) | 0.2896 | | |
| Platelet | 0.996 (0.994–0.999) | 0.0016 | 0.997 (0.994–1.000) | 0.0389 |
| Albumin | 0.520 (0.316–0.854) | 0.0098 | 1.200 (0.669–2.155) | 0.5405 |
| Total bilirubin | 1.074 (0.933–1.237) | 0.3222 | | |
| CRP | 1.001 (0.997–1.004) | 0.7466 | | |
| POD 7 total cholesterol level <61 mg/dL | 5.228 (2.949–9.268) | <0.0001 | 3.961 (1.786–8.784) | 0.0007 |
| Postoperative complications | | | | |
| Anastomotic leakage | 1.463 (0.772–2.772) | 0.2433 | | |
| Wound complication | 0.787 (0.434–1.427) | 0.4297 | | |
| Newly developed sepsis (t) ^a | 0.345 (0.136–0.876) | 0.0251 | 1.344 (1.074–1.682) | 0.0098 |
| Pulmonary complication (t) ^a | 0.308 (0.117–0.812) | 0.0173 | 1.272 (0.985–1.643) | 0.0650 |
| Acute kidney injury | 3.540 (2.065–6.069) | <0.0001 | 1.509 (0.587–3.874) | 0.3928 |
| Ileus | 1.714 (0.955–3.076) | 0.0710 | | |
| Type of procedure | | | | |
| Primary repair | Ref. | | | |
| Small bowel resection with anastomosis | 1.174 (0.329–4.190) | 0.8045 | | |
| Ileo- or jejunostomy | 1.222 (0.545–2.738) | 0.6264 | | |
| Hartmann's procedures or colostomy | 1.148 (0.430–3.068) | 0.7825 | | |

(Continued)

Table 3. (Continued)

| Characteristics | Univariate analysis | | Multivariate analysis | |
|----------------------------------|---------------------|---------|-----------------------|---------|
| | HR (95% CI) | P-value | HR (95% CI) | P-value |
| Colon resection with anastomosis | 0.798 (0.345–1.850) | 0.5993 | | |
| Gastrectomy (subtotal or total) | 0.978 (0.438–2.183) | 0.9564 | | |

DM, diabetes mellitus; CRF, chronic renal failure; ASA, American Society of Anesthesiologists physical status classification; APACHE II, Acute Physiology and Chronic Health Evaluation II; POD, postoperative day; CRP, C-reactive protein.

^a These are time-dependent variables that were used in the univariate and multivariable Cox regression model.

<https://doi.org/10.1371/journal.pone.0200187.t003>

that a total cholesterol level of <61 mg/dL on POD 7 was the strongest independent predictor of in-hospital mortality after emergency GI surgery for diffuse peritonitis. These findings suggest that severe persistent hypocholesterolemia, rather than transient hypocholesterolemia, is associated with in-hospital mortality. In contrast, a progressive increase in cholesterol is associated with patient recovery.

The present study has several limitations. First, it is a retrospective, single-center study. Second, our database does not include any information regarding nutritional factors, such as pre-albumin, retinol-binding protein, or transferrin levels, nor does it include inflammatory cytokine levels, including for tumor necrosis factor-alpha, interleukin-1, or interleukin-6. These factors may affect plasma cholesterol levels, and their effects will be examined in future studies. Additionally, there was a large amount of missing data related to lactate and procalcitonin levels. For this reason, lactate and procalcitonin were excluded from the analysis. Third, we did not evaluate other lipid (e.g., high-density lipoprotein, low-density lipoprotein, and triglyceride) profiles. Cholesterol is unlikely to be the only lipid measure with an impact as a biomarker, similar to carcinoembryonic antigen and prostate-specific antigen. Therefore, cholesterol, in combination with other lipid profiles, must be validated for its intended clinical use through prospective randomized clinical trials. Fourth, fluid administration, dilution, and cholestasis were not assessed for their impacts on cholesterol levels [18]. Fifth, our database does not include information on patient histories of statin use, familial hypercholesterolemia, or types of nutritional support.

Conclusions

This study demonstrated that severe persistent hypocholesterolemia is associated with in-hospital mortality among critically ill patients with diffuse peritonitis who undergo emergency GI surgery. Further, the total cholesterol level is a valuable biomarker for predicting outcomes during the postoperative period in these patients.

Supporting information

S1 File. STROBE statement checklist.
(DOCX)

S2 File. Raw data.
(XLSX)

Acknowledgments

The authors thank Mi Kyung Song for assistance with the statistical analyses and also thank all of the coordinators for their valuable help and cooperation.

Author Contributions

Conceptualization: Seung Hwan Lee, Jae Gil Lee.

Data curation: Seung Hwan Lee, Jae Gil Lee.

Formal analysis: Seung Hwan Lee, Bo Ok Kim.

Investigation: Seung Hwan Lee, Jin Young Lee, Tae Hwa Hong, Yeon Ju Lee.

Methodology: Seung Hwan Lee, Tae Hwa Hong, Bo Ok Kim, Jae Gil Lee.

Project administration: Jae Gil Lee.

Resources: Jae Gil Lee.

Supervision: Jin Young Lee, Tae Hwa Hong, Jae Gil Lee.

Validation: Jin Young Lee, Bo Ok Kim.

Visualization: Seung Hwan Lee, Yeon Ju Lee.

Writing – original draft: Seung Hwan Lee.

Writing – review & editing: Seung Hwan Lee, Jin Young Lee, Tae Hwa Hong, Bo Ok Kim, Yeon Ju Lee, Jae Gil Lee.

References

1. Sartelli M, Catena F, Ansaloni L, Moore E, Malangoni M, Velmahos G, et al. Complicated intra-abdominal infections in a worldwide context: an observational prospective study (CIAOW Study). *World J Emerg Surg.* 2013; 8: 1. <https://doi.org/10.1186/1749-7922-8-1> PMID: 23286785
2. Sartelli M. A focus on intra-abdominal infections. *World J Emerg Surg.* 2010; 5: 9. <https://doi.org/10.1186/1749-7922-5-9> PMID: 20302628
3. Evans HL, Raymond DP, Pelletier SJ, Crabtree TD, Pruett TL, Sawyer RG. Tertiary peritonitis (recurrent diffuse or localized disease) is not an independent predictor of mortality in surgical patients with intra-abdominal infection. *Surg Infect (Larchmt).* 2001; 2: 255–263; discussion 264–255.
4. Pacelli F, Doglietto GB, Alfieri S, Piccioni E, Sgadari A, Gui D, et al. Prognosis in intra-abdominal infections. Multivariate analysis on 604 patients. *Arch Surg.* 1996; 131: 641–645. PMID: 8645072
5. Mulari K, Leppaniemi A. Severe secondary peritonitis following gastrointestinal tract perforation. *Scand J Surg.* 2004; 93: 204–208. <https://doi.org/10.1177/145749690409300306> PMID: 15544075
6. Horiuchi A, Watanabe Y, Doi T, Sato K, Yukumi S, Yoshida M, et al. Evaluation of prognostic factors and scoring system in colonic perforation. *World J Gastroenterol.* 2007; 13: 3228–3231. <https://doi.org/10.3748/wjg.v13.i23.3228> PMID: 17589902
7. McLauchlan GJ, Anderson ID, Grant IS, Fearon KC. Outcome of patients with abdominal sepsis treated in an intensive care unit. *Br J Surg.* 1995; 82: 524–529. PMID: 7613902
8. Koperna T, Schulz F. Prognosis and treatment of peritonitis. Do we need new scoring systems? *Arch Surg.* 1996; 131: 180–186. PMID: 8611076
9. Montravers P, Gauzit R, Muller C, Marmuse JP, Fichelle A, Desmots JM. Emergence of antibiotic-resistant bacteria in cases of peritonitis after intraabdominal surgery affects the efficacy of empirical antimicrobial therapy. *Clin Infect Dis.* 1996; 23: 486–494. PMID: 8879770
10. Suarez-de-la-Rica A, Maseda E, Anillo V, Tamayo E, Garcia-Bernedo CA, Ramasco F, et al. Biomarkers (Procalcitonin, C Reactive Protein, and Lactate) as Predictors of Mortality in Surgical Patients with Complicated Intra-Abdominal Infection. *Surg Infect (Larchmt).* 2015; 16: 346–351.
11. Thannhauser SJ, Schaber H. Über die Beziehungen des Gleichgewichtes Cholesterin und Cholesterinester im Blut und Serum zur Leberfunktion. *Klin Wchnschr.* 1926; 5: 252.
12. Wilson RF, Barletta JF, Tyburski JG. Hypocholesterolemia in sepsis and critically ill or injured patients. *Crit Care.* 2003; 7: 413–414. <https://doi.org/10.1186/cc2390> PMID: 14624677
13. Giovannini I, Chiarla C, Greco F, Boldrini G, Nuzzo G. Characterization of biochemical and clinical correlates of hypocholesterolemia after hepatectomy. *Clin Chem.* 2003; 49: 317–319. PMID: 12560360
14. Aronsen KF, Ericsson B, Pihl B. Metabolic changes following major hepatic resection. *Ann Surg.* 1969; 169: 102–110. PMID: 5762440

15. Dunham CM, Fealk MH, Sever WE 3rd. Following severe injury, hypocholesterolemia improves with convalescence but persists with organ failure or onset of infection. *Crit Care*. 2003; 7: R145–153. <https://doi.org/10.1186/cc2382> PMID: 14624689
16. Yamano S, Shimizu K, Ogura H, Hirose T, Hamasaki T, Shimazu T, et al. Low total cholesterol and high total bilirubin are associated with prognosis in patients with prolonged sepsis. *J Crit Care*. 2016; 31: 36–40. <https://doi.org/10.1016/j.jcrc.2015.09.033> PMID: 26596698
17. Biller K, Fae P, Germann R, Drexel H, Walli AK, Fraunberger P. Cholesterol rather than procalcitonin or C-reactive protein predicts mortality in patients with infection. *Shock*. 2014; 42: 129–132. <https://doi.org/10.1097/SHK.000000000000187> PMID: 24727873
18. Chiarla C, Giovannini I, Giuliani F, Zadak Z, Vellone M, Ardito F, et al. Severe hypocholesterolemia in surgical patients, sepsis, and critical illness. *J Crit Care*. 2010; 25: 361 e367–361 e312.
19. Dellinger RP, Levy MM, Rhodes A, Annane D, Gerlach H, Opal SM, et al. Surviving sepsis campaign: international guidelines for management of severe sepsis and septic shock: 2012. *Crit Care Med*. 2013; 41: 580–637. <https://doi.org/10.1097/CCM.0b013e31827e83af> PMID: 23353941
20. Mangram AJ, Horan TC, Pearson ML, Silver LC, Jarvis WR. Guideline for prevention of surgical site infection, 1999. Hospital Infection Control Practices Advisory Committee. *Infect Control Hosp Epidemiol*. 1999; 20: 250–278; quiz 279–280. <https://doi.org/10.1086/501620> PMID: 10219875
21. Heagerty PJ, Zheng Y. Survival model predictive accuracy and ROC curves. *Biometrics*. 2005; 61: 92–105. <https://doi.org/10.1111/j.0006-341X.2005.030814.x> PMID: 15737082
22. Contal C, O'Quigley J. An application of changepoint methods in studying the effect of age on survival in breast cancer. *Computational Statistics & Data Analysis*. 1999; 30: 253–270.
23. Linder MM, Wacha H, Feldmann U, Wesch G, Streifensand RA, Gundlach E. [The Mannheim peritonitis index. An instrument for the intraoperative prognosis of peritonitis]. *Chirurg*. 1987; 58: 84–92. PMID: 3568820
24. Bracho-Riquelme RL, Reyes-Romero MA, Pescador N, Flores-Garcia AI. A leptin serum concentration less than 10 ng/ml is a predictive marker of outcome in patients with moderate to severe secondary peritonitis. *European Surgical Research*. 2008; 41: 238–244. <https://doi.org/10.1159/000136480> PMID: 18525209
25. Riche FC, Cholley BP, Panis YH, Laisne MJ, Briard CG, Graulet AM, et al. Inflammatory cytokine response in patients with septic shock secondary to generalized peritonitis. *Crit Care Med*. 2000; 28: 433–437. PMID: 10708179
26. Giovannini I, Chiarla C, Giuliani F, Vellone M, Ardito F, Pallavicini F, et al. Biochemical and clinical correlates of hypouricemia in surgical and critically ill patients. *Clin Chem Lab Med*. 2007; 45: 1207–1210. <https://doi.org/10.1515/CCLM.2007.502> PMID: 17635067
27. Coombes EJ, Shakespeare PG, Batstone GF. Lipoprotein changes after burn injury in man. *J Trauma*. 1980; 20: 971–975. PMID: 7431454
28. Budd D, Ginsberg H. Hypocholesterolemia and acute myelogenous leukemia. Association between disease activity and plasma low-density lipoprotein cholesterol concentrations. *Cancer*. 1986; 58: 1361–1365. PMID: 3461875
29. Fraunberger P, Schaefer S, Werdan K, Walli AK, Seidel D. Reduction of circulating cholesterol and apolipoprotein levels during sepsis. *Clin Chem Lab Med*. 1999; 37: 357–362. <https://doi.org/10.1515/CCLM.1999.059> PMID: 10353483
30. Giovannini I, Boldrini G, Castagneto M, Sganga G, Nanni G, Pittiruti M, et al. Respiratory quotient and patterns of substrate utilization in human sepsis and trauma. *JPEN J Parenter Enteral Nutr*. 1983; 7: 226–230. <https://doi.org/10.1177/0148607183007003226> PMID: 6408272
31. Gordon BR, Parker TS, Levine DM, Saal SD, Wang JC, Sloan BJ, et al. Relationship of hypolipidemia to cytokine concentrations and outcomes in critically ill surgical patients. *Crit Care Med*. 2001; 29: 1563–1568. PMID: 11505128
32. van Leeuwen HJ, van Beek AP, Dallinga-Thie GM, van Strijp JA, Verhoef J, van Kessel KP. The role of high density lipoprotein in sepsis. *Neth J Med*. 2001; 59: 102–110. PMID: 11583825
33. Rauchhaus M, Coats AJ, Anker SD. The endotoxin-lipoprotein hypothesis. *Lancet*. 2000; 356: 930–933. [https://doi.org/10.1016/S0140-6736\(00\)02690-8](https://doi.org/10.1016/S0140-6736(00)02690-8) PMID: 11036910
34. Kitchens RL, Thompson PA, Munford RS, O'Keefe GE. Acute inflammation and infection maintain circulating phospholipid levels and enhance lipopolysaccharide binding to plasma lipoproteins. *J Lipid Res*. 2003; 44: 2339–2348. <https://doi.org/10.1194/jlr.M300228-JLR200> PMID: 12923224
35. Alvarez C, Ramos A. Lipids, lipoproteins, and apoproteins in serum during infection. *Clin Chem*. 1986; 32: 142–145. PMID: 3940695
36. Sun X, Oberlander D, Huang J, Weissman C. Fluid resuscitation, nutritional support, and cholesterol in critically ill postsurgical patients. *J Clin Anesth*. 1998; 10: 302–308. PMID: 9667346

37. Palma S, Cosano A, Mariscal M, Martinez-Gallego G, Medina-Cuadros M, Delgado-Rodriguez M. Cholesterol and serum albumin as risk factors for death in patients undergoing general surgery. *Br J Surg*. 2007; 94: 369–375. <https://doi.org/10.1002/bjs.5626> PMID: 17279492
38. Giovannini I, Boldrini G, Chiarla C, Giuliani F, Vellone M, Nuzzo G. Pathophysiologic correlates of hypocholesterolemia in critically ill surgical patients. *Intensive Care Med*. 1999; 25: 748–751. PMID: 10470581
39. Guimaraes SM, Lima EQ, Cipullo JP, Lobo SM, Burdmann EA. Low insulin-like growth factor-1 and hypocholesterolemia as mortality predictors in acute kidney injury in the intensive care unit. *Crit Care Med*. 2008; 36: 3165–3170. <https://doi.org/10.1097/CCM.0b013e318186ab70> PMID: 19020431
40. Vyroubal P, Chiarla C, Giovannini I, Hyspler R, Ticha A, Hrnčiarikova D, et al. Hypocholesterolemia in clinically serious conditions—review. *Biomed Pap Med Fac Univ Palacky Olomouc Czech Repub*. 2008; 152: 181–189. PMID: 19219206
41. Dewar DC, Tarrant SM, King KL, Balogh ZJ. Changes in the epidemiology and prediction of multiple-organ failure after injury. *J Trauma Acute Care Surg*. 2013; 74: 774–779. <https://doi.org/10.1097/TA.0b013e31827a6e69> PMID: 23425734
42. Nydam TL, Kashuk JL, Moore EE, Johnson JL, Burlew CC, Biffi WL, et al. Refractory Postinjury Thrombocytopenia Is Associated With Multiple Organ Failure and Adverse Outcomes. *Journal of Trauma-Injury Infection and Critical Care*. 2011; 70: 401–406.