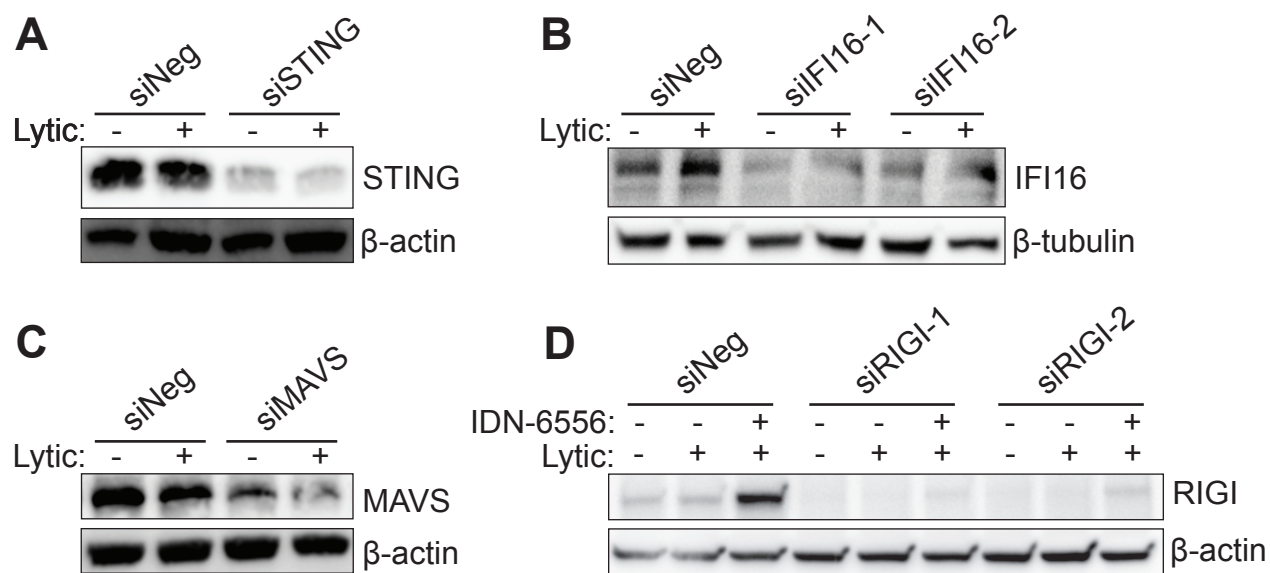


## Figure S1



**Figure S1. Knockdown of proteins in the type I IFN induction pathway.**

iSLK.219 cells were transfected with a negative control siRNA and siRNAs targeting STING (A), IFI16 (B), MAVS (C), or RIG-I (D). Cell lysates were harvested at day 4 post reactivation with doxycycline and treatment with IDN-6556 (where indicated) and subjected to western blotting for the target proteins and β-actin or β-tubulin as loading controls. Blots are representative of 3 replicates.