

Research

Open Access

Altered integrin expression in lichen planopilaris

Roberto d'Ovidio¹, Concetta Sgarra², Anna Conserva³,
Umberto Filippo Angelotti², Roberta Erriquez² and Caterina Foti^{*3}

Address: ¹Specialist in Dermatology-AIDA/Tricologia, Bari, Italy, ²Department of Internal Medicine, Immunology and Infectious Diseases, Unit of Internal Medicine, University of Bari, Policlinico, Piazza Giulio Cesare 11, 70124 Bari, Italy and ³Department of Internal Medicine, Immunology and Infectious Diseases, Unit of Dermatology, University of Bari, Policlinico, Piazza Giulio Cesare 11, 70124 Bari, Italy

Email: Roberto d'Ovidio - robdovi@tin.it; Concetta Sgarra - connie78@libero.it; Anna Conserva - annaconserva@tiscali.it;
Umberto Filippo Angelotti - connie78@libero.it; Roberta Erriquez - connie78@libero.it; Caterina Foti* - c.foti@dermatologia.uniba.it

* Corresponding author

Published: 8 February 2007

Received: 7 September 2006

Head & Face Medicine 2007, 3:11 doi:10.1186/1746-160X-3-11

Accepted: 8 February 2007

This article is available from: <http://www.head-face-med.com/content/3/1/11>

© 2007 d'Ovidio et al; licensee BioMed Central Ltd.

This is an Open Access article distributed under the terms of the Creative Commons Attribution License (<http://creativecommons.org/licenses/by/2.0>), which permits unrestricted use, distribution, and reproduction in any medium, provided the original work is properly cited.

Abstract

Background: Lichen planopilaris (LPP) is an inflammatory disease characterized by a lymphomononuclear infiltrate surrounding the isthmus and infundibulum of the hair follicle of the scalp, that evolves into atrophic/scarring alopecia. In the active phase of the disease hairs are easily plucked with anagen-like hair-roots. In this study we focused on the expression of integrins and basement membrane components of the hair follicle in active LPP lesions.

Methods: Scalp biopsies were taken in 10 patients with LPP and in 5 normal controls. Using monoclonal antibodies against $\alpha_3\beta_1$ and $\alpha_6\beta_4$ integrins we showed the expression of these integrins and of the basement membrane components of the hair follicle in active LPP lesions and in healthy scalp skin.

Results: In the LPP involved areas, $\alpha_3\beta_1$ was distributed in a pericellular pattern, the α_6 subunit was present with a basolateral distribution while the β_4 subunit showed discontinuous expression at the basal pole and occasionally, basolateral staining of the hair follicle. Conclusion: An altered distribution of the integrins in active LPP lesions can explain the phenomenon of easy pulling-out of the hair with a "gelatinous" root-sheath.

Introduction

Lichen planopilaris (LPP) is an uncommon disease characterized by widespread keratosis pilaris and a progressive inflammatory cicatricial alopecia. The scalp often is the only site of involvement with different manifestations, such as perifollicular erythema and scaling (keratotic spines), patchy or diffuse hair loss, and at the end stage an atrophic cicatricial alopecia with loss of follicular ostia [1-3].

This disease mostly affects middle-aged females without racial predilection. The etiopathogenesis is unknown, although there is an immune infiltrate characterized by activated T lymphocytes (CD4 and CD8), that attacks the epithelium of the infundibula and isthmus areas of hair follicles (the bulge area) and sometimes the interfollicular epidermis with the lower portion of hair follicle being relatively spared [4]. Later findings are perifollicular fibrosis and "artificial clefts" between epithelium and stroma [5]. Ultimately hair follicles are definitively destroyed. The follicular antigen(s) targeted by these lymphocytes are not

Table 1: Clinical and laboratorial data of 10 patients with LPP.

Patients	Sex	Age	Duration of disease	Granular deposits at DEJ*
1	M	53	10 months	IgM, F
2	F	40	1 year	IgM, F
3	F	58	1 year	Neg
4	M	48	2 years	IgM, F
5	F	18	1 year	Neg
6	F	20	18 months	Neg
7	F	35	3 years	IgM, F
8	F	24	9 months	Neg
9	F	44	2 years	IgM, F, C ₃
10	F	28	7 months	IgM, F

* DEJ – Dermo-epidermal junction

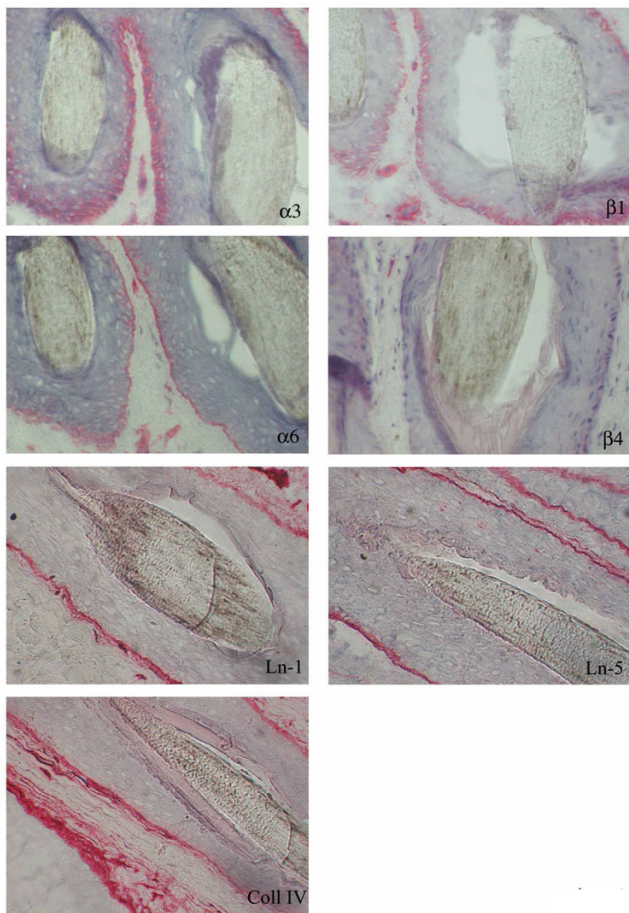


Figure 1
Ln-1, Ln-5, Coll IV, $\alpha3\beta1$ and $\alpha6\beta4$ integrins staining in a hair follicle from uninvolved scalp skin of a healthy subject.

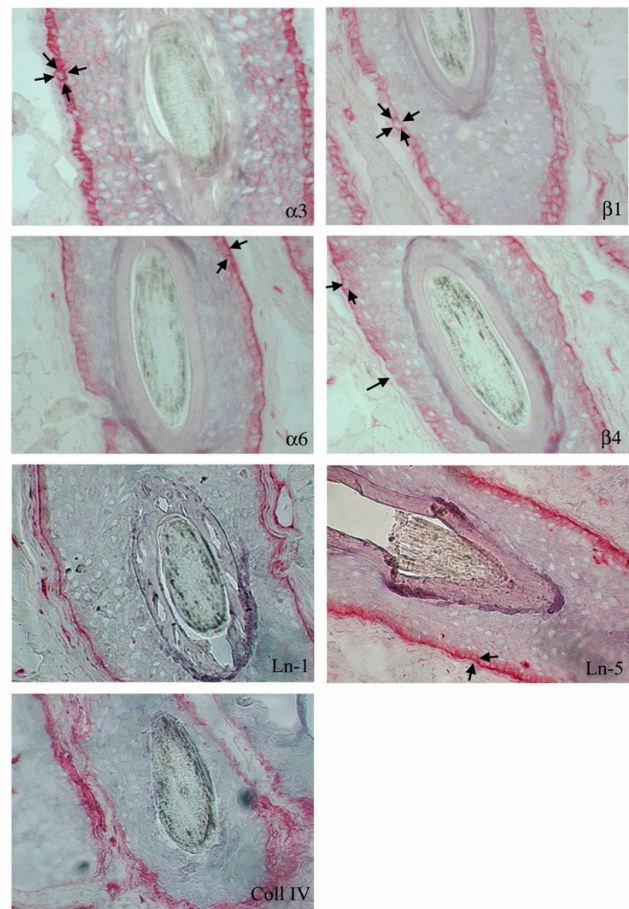


Figure 2
Ln-1, Ln-5, Coll IV, $\alpha3\beta1$ and $\alpha6\beta4$ integrins staining in a hair follicle from involved scalp skin of a patient with LLP.

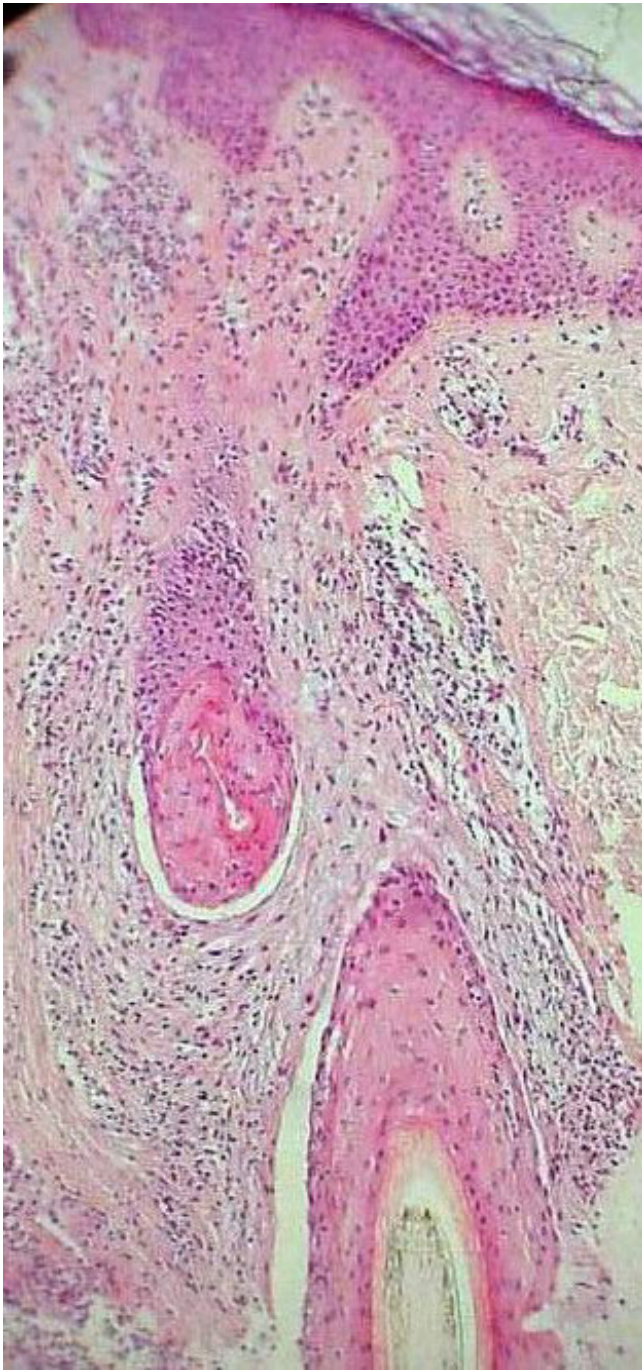


Figure 3
An artifactual cleft between the epithelium and the stroma of the scalp skin in a patient with LPP. Original magnification 100 \times .

known. These antigens are thought to be viral, pharmacological or self [4].

In the early stage typical pathohistologic finding of LPP is a lichenoid infiltrates around the follicular epithelium of the infundibuloisthmic region (the bulge area),

Direct immunofluorescence often demonstrates colloid bodies and a linear deposit of fibrin and/or fibrinogen at the dermo-epidermal junction [6].

Typically in the active phase of the disease there is a positive pull test with hairs that are easily plucked with anagen-like hair-roots presenting dysplastic hair roots sheaths. The outer root sheath cells interact with the basement membrane mainly via $\alpha_3\beta_1$ and $\alpha_6\beta_4$ integrins, which are expressed at different levels in different regions of the hair follicle [7].

In particular the aim of this study was to evaluated the expressions of $\alpha_3\beta_1$ ed $\alpha_6\beta_4$ integrins of follicular keratinocytes in LPP, comparing that on pathological skin of 10 patients with LPP and 5 healty patients.

Methods

Patients attending the Unit of Dermatology of the University of Bari with diagnosis of LPP of the scalp based on clinical, histological and immunofluorescence findings. The patients were seen from February to November 2005 (2 men and 8 were women) aging range 18–58 years. Clinical and laboratorial data of the 10 patients with LPP are reported in table 1.

Scalp biopsies were also done in 5 normal scalp controls (2 men and 3 women). The age of the controls range from 19 and 70 years. Informed written consent was obtained from all patients before surgical biopsy. Scalp biopsies consisted of 4 mm punch biopsies taken from the active edges of the lesions and from uninvolved scalp skin in the patients with diagnosis of LPP, and from the mid or posterior crown in the controls. Surgical biopsy specimens were snap-frozen in liquid nitrogen, mounted in Optimal Cutting Temperature 4583 embedding compound (Miles Laboratories, Inc; Naperville, Illinois), and stored at -80°C.

Five-micrometer serial frozen sections were cut with a microtome (Microtom, HM 505E, Carl Zeiss, Oberkochen, Germany), transferred onto glass slides (Sigma Chemical Company) and processed for indirect alkaline phosphatase.

Briefly, sections were fixed in chloroform/acetone mixture for 10 minutes at 4°C, air dried and incubated with pri-



Figure 4
Pulled-out dysplastic anagen hair: the ORS contains remnants of the sebaceous gland at the level of the isthmus.

mary antibody (10 $\mu\text{g}/\text{ml}$) diluted in RPMI medium containing 10% FCS.

After washing, sections were incubated with secondary antibody (rabbit anti-mouse), washed and incubated with a mouse anti-alkaline phosphatase conjugated antibody (Dako, Glostrup, Denmark). Reactions were developed with red fuchsin, sections were counterstained with Mayer's hemalum solution, mounted with glycerol and examined with a Nikon Eclipse photomicroscope (Nikon Corp.).

Antibodies F2, F4, and F1 (to human integrin α_3) were kindly provided by L. Zardi (IST Genoa, Italy). Antibodies MAR6 and MAR4 (to human integrin α_6 and β_1 respectively) were a gift from S. Menard (INT, Milan, Italy). α_6 (GoH3) was purchased from Pharmingen (San Diego,

CA). Monoclonal antibody anti-Ln-1 and Coll IV were purchased from Sigma (St. Louis, MO). Human anti-Ln-5 (GB3) (Vailly et al, 1994) was a gift of G. Meneguzzi (School of Medicine, Nice, France).

Results

In the uninvolved areas integrin $\alpha_3\beta_1$ was expressed with a basolateral distribution instead $\alpha_6\beta_4$ was distributed in the basal keratinocyte layer in the Outer Root Sheath (ORS) of the follicle (Fig 1). In the involved areas of LPP $\alpha_3\beta_1$ was distributed in a pericellular pattern, α_6 subunit was present in a basolateral distribution, while β_4 subunit shows a discontinuous expression at the basal pole and occasionally basolateral staining of the hair follicle (Fig. 2). Staining for Ln-1 and collagen IV was similar represented in uninvolved (Fig. 1) and involved (Fig. 2) areas of scalp skin. In involved areas of scalp skin Ln-5 (colocalized with α_6 integrin), showed a basolateral distribution as well as integrin α_6 (Fig. 2), instead in normal control Ln-5 and integrin α_6 were distributed along the basal layer of the hair follicle (Fig. 1).

Discussion

LPP is an inflammatory disease characterized by a lichenoid inflammation surrounding the isthmus and infundibulum of the hair follicle of the scalp and other body areas, that evolves with atrophic cicatricial alopecia.

In this study we focused on the expression of integrins and basement membrane (BM) components of the hair follicle in active LPP lesions and in healthy subjects. Integrin $\alpha_6\beta_4$, a component of hemidesmosomes, is normally confined to the basal keratinocytes of the hair follicle and has functions involving keratinocyte recognition and attachment to the BM. Integrin $\alpha_3\beta_1$, a receptor for laminin and collagen, is localized on the basolateral layer of the basal keratinocytes, suggesting that it also has a role in cell-cell adhesion.

In a previous study (performed in mice), Brakebusch et al. demonstrated that β_1 integrins have an important role in hair follicle morphogenesis, in the differentiation and in the cell-cell interaction of follicular keratinocytes. On the other hand, altered β_1 integrin expression in follicular keratinocytes provokes dermal fibrosis and hair loss [8].

This study showed an altered distribution of integrins in follicular keratinocytes in LPP involved areas. Integrin $\alpha_3\beta_1$ was distributed in a pericellular pattern, the α_6 subunit was present with a basolateral distribution while the β_4 subunit showed discontinuous expression at the basal pole, and occasionally basolaterally. In uninvolved skin of the scalp the distribution of $\alpha_6\beta_4$ was exclusively basal. These pathological aspects are also found in erosive lichen planus vulvae and cutaneous lichen ruber planus [9,10].

Conclusion

This study showed an altered distribution of integrins in follicular keratinocytes in LPP involved areas. The altered expression of integrins may be provoked by cytokines and proteases released by peri- and intra-follicular T lymphocytes, mast cells and macrophages [11,12].

Altered expression of integrins provokes the loss of adhesion of follicular keratinocytes to the stroma and could explain the artifactual clefts observed in histological samples (Fig. 3) and the phenomenon of easy plucking of the hair, with a "gelatinous" root-sheath containing stem cells (Fig. 4).

For this reason, scratching due to pruritus, but also during normal treatment such as combing and shampooing, as well as inadequate topical therapy (e.g. ointment), could accelerate the process of irreversible defluvium.

Competing interests

The author(s) declare they have no competing interests.

Authors' contributions

DR conceived the study and did the case record search, coordinated the write-up and submission of the article. FC and CA were responsible to see the patients at hospital. AUF carried out the literature search. SC and ER performed the immunohistochemical staining. FC revised the manuscript.

Acknowledgements

No sources of funding contributed to the development of this article.

References

- Matta M, Kibbi AG, Khattar J, Salman SM, Zaynoun ST: **Lichen planopilaris: a clinicopathologic study.** *J Am Acad Dermatol* 1990, **22**:594-598.
- Chierigato C, Zini A, Barba A, Magnanini M, Rosina P: **Lichen planopilaris: report of 30 cases and review of the literature.** *Int J Dermatol* 2003, **42**:342-345.
- Sehgal VN, Srivastva G, Bajaj P: **Cicatricial (scarring) alopecia.** *Int J Dermatol* 2001, **40**:241-248.
- Mobini N, Tam S, Kamino H: **Possible role of the bulge region in the pathogenesis of inflammatory scarring alopecia: lichen planopilaris as the prototype.** *J Cutan Pathol* 2005, **32**:675-679.
- Sperling LC, Cowper SE: **The histopathology of primary cicatricial alopecia.** *Semin Cutan Med Surg* 2006, **25**:41-50.
- Amato L, Mei S, Massi D, Gallerani I, Fabbri P: **Cicatricial alopecia; a dermatopathologic and immunopathologic study of 33 patients (pseudopelade of Brocq is not a specific clinicopathologic entity).** *Int J Dermatol* 2002, **41**:8-15.
- Commo S, Bernard BA: **The distribution of alpha 2 beta 1, alpha 3 beta 1 and alpha 6 beta 4 integrins identifies distinct subpopulations of basal keratinocytes in the outer root sheath of the human anagen hair follicle.** *Cell Mol Life Sci* 1997, **53**:466-471.
- Brakebusch C, Grose R, Quondamatteo F, Ramirez A, Jorcano JL, Pirro A, Svensson M, Herken R, Sasaki T, Timpl R, Werner S, Fassler R: **Skin and hair follicle integrity is crucially dependent on beta 1 integrin expression on keratinocytes.** *EMBO J* 2000, **19**:3990-4003.
- Cooper SM, Prenter A, Allen J, Dean D, Wojnarowska F: **The basement membrane zone and dermal extracellular matrix in erosive lichen planus of the vulva: an immunohistochemical study demonstrating altered expression of hemidesmosome components and anchoring fibrils.** *Clin Exp Dermatol* 2005, **30**:277-281.
- Giannelli G, Brassard J, Foti C, Stetler-Stevenson WG, Falk-Marzillier J, Zamboni-Zallone A, Schiraldi O, Quaranta V: **Altered expression of basement membrane proteins and their integrin receptors in lichen planus: possible pathogenetic role of gelatinases A and B.** *Lab Invest* 1996, **74**:1091-1104.
- Zhao ZZ, Savage NW, Sugarman PB, Walsh LJ: **Mast cell/T cell/T cell interactions in oral lichen planus.** *J Oral Pathol Med* 2002, **31**:189-195.
- Santoro A, Majorana A, Roversi L, Gentili F, Marrelli S, Vermi W, Cardellini E, Sapelli P, Facchetti F: **Recruitment of dendritic cells in oral lichen planus.** *J Pathol* 2005, **205**:426-434.

Publish with **BioMed Central** and every scientist can read your work free of charge

"BioMed Central will be the most significant development for disseminating the results of biomedical research in our lifetime."

Sir Paul Nurse, Cancer Research UK

Your research papers will be:

- available free of charge to the entire biomedical community
- peer reviewed and published immediately upon acceptance
- cited in PubMed and archived on PubMed Central
- yours — you keep the copyright

Submit your manuscript here:
http://www.biomedcentral.com/info/publishing_adv.asp

