

CASE REPORT

Open Access

Primary diffuse large B-cell lymphoma developing within a rectal tubular adenoma with low-grade dysplasia: a case report

Francesco Genovese^{1*}, Gaspare Becchina¹, Claudia Nagar¹, Gabriella Ottoveggio¹, Benedetto Giacalone¹, Giuseppa Scaglione¹, Elisa Varriale² and Vincenzo Tralongo¹

Abstract

Introduction: Colorectal lymphomas represent only 5% to 10% of gastrointestinal lymphomas, after the stomach and small intestine. Primary lymphoma of the colon and rectum is an unusual observation, constituting only 0.2% to 0.5% of all malignant tumors arising from the colorectal region. Very little is known about the correlation between adenoma and lymphoma in the colorectal tract. We report here a rare case of diffuse large B-cell lymphoma developing within a solitary tubular adenoma with low-grade dysplasia of the rectum.

Case presentation: An 83-year-old Caucasian man was referred to our hospital intermittent anal bleeding and irregular bowel. Colonoscopy revealed a 1cm solitary rectal polyp, which was completely removed by endoscopic resection. Histologic studies revealed low-grade intraepithelial dysplasia; the stroma of adenoma showed focal localization by highly proliferative lymphoid cells. Immunohistochemical analyses demonstrated that lymphoid cells were positive for CD20 and bcl2, whereas they were negative for CD3, CD5, CD10, CD23, CD30, CD138 and cyclin D1. Approximately 90% of the neoplastic cells reacted positively when stained with an antibody to Ki-67. Molecular studies showed the presence of a monoclonal immunoglobulin heavy chain gene rearrangement. To determine primary or secondary lymphoma localization, Dawson's criteria were applied to the case. A diagnosis of primary diffuse large B- lymphoma Ann Arbor stage 1A was established. Subsequently, the patient was referred to oncology to establish the stage and to select appropriate treatment.

Conclusions: The case of diffuse large B-cell lymphoma developing within a tubular adenoma, as reported here, is considered a rare event. Little about the prognosis of primary colorectal lymphomas is available and therapeutic treatment protocol is unclear. This case report provides more information on the history and macroscopic appearance of lymphomas presenting in an unusual location. To report additional cases in the future would be helpful in redefining the diagnostic, prognostic and therapeutic approach.

Keywords: Adenoma, Diffuse large B-cell lymphoma, Gastrointestinal lymphoma, Polyp

Introduction

Colorectal lymphomas constitute only 5% to 10% of gastrointestinal (GI) lymphomas, after the stomach and small intestine. Of these large bowel lymphomas, 60% are located in the caecum, 20% in the rectum, and the remainder throughout the colon.

The most common symptoms in more than half of patients are abdominal pain and weight loss or a change in bowel habits. Lower GI bleeding can be found in 13% to 82% of patients. As with GI malignancies, the initial clinical manifestations and the gross appearance of the lesions appear to be related to the site of GI involvement. Thus, obstructing masses or wall thickening are more frequent in small bowel involvement, whereas polyps are predominant in the colon and rectum.

Most colorectal lymphomas are secondary involvement by widespread diseases. Primary lymphoma of the

* Correspondence: francescogenovese@asppalermo.org

¹Department of Diagnostic Laboratory, U.O.C. of Pathological Anatomy, "G.F. Ingrassia" Hospital, ASP Palermo, Italy

Full list of author information is available at the end of the article

colon and rectum is an unusual observation, constituting only 0.2% to 0.5% of all malignant tumors arising from the colorectal region with caecum, ascending colon and rectum more often affected. On histological examination, almost 90% of the primary GI lymphomas are of B-cell lineage with very few T-cell lymphomas and Hodgkin lymphoma [1-8]. Although there have been reports regarding primary GI lymphomas alone [9-11] or in association with GI malignancies [12-15] very little is known about the correlation between adenoma and lymphoma in the colorectal tract [16,17]. Here we report a rare case of diffuse large B-cell lymphoma (DLBCL) developing within a solitary rectal tubular adenoma with low-grade dysplasia in an 83-year-old man with immunophenotypical and genetic characterization.

Case presentation

An 83-year-old Caucasian man, in otherwise good health, was referred to our hospital with intermittent anal bleeding and irregular bowel patterns. A colonoscopy revealed a 1cm solitary rectal polyp, which was completely removed by endoscopic resection (Figure 1).

Histological examination showed a tubular adenoma with low-grade intraepithelial dysplasia and focal localization in the stroma by highly proliferative large lymphoid cells (Figure 2a-c). The base of the adenoma was not involved.

Immunohistochemical stains demonstrated that the lymphoid cells expressed CD20 (clone 2B11 + PD7/26, DAKO; Figure 2d and 2e) and B-cell lymphoma 2 (clone 2B11 + PD7/26, DAKO; figure not shown), but not CD3 (clone F7.2.38, DAKO), CD5 (clone 4C7, DAKO), CD10 (clone 56C6, DAKO), CD23 (clone DAK-CD23, DAKO), CD30 (clone Ber-H2, DAKO), CD138 (clone MI15, DAKO) and cyclin D1 (clone EP12, DAKO). Approximately 90% of the neoplastic cells reacted positively when stained with an antibody to Ki-67 (clone MIB1, DAKO; Figure 2f).

Finally, molecular genetic analysis detecting the rearrangement of the FR2/LJH/VLJH region of the immunoglobulin

heavy chain was performed and a monoclonal amplicon of approximately 260 base pairs (expected band between 240 and 280 base pairs) was detected, demonstrating malignancy and clonal association of the lymphoma infiltrates in the adenoma (Figure 3). Molecular analyses were carried out as previously described [18,19] and according to the manufacturer's instructions. Commercial reagents by DAKO Cytomation, Milan, Italy and by Diachem S.r.l., Naples, Italy to perform immunohistochemical and a B clonality assay were used, respectively. All used products are compliant with the requirements of the *in vitro* diagnostic directive 98/79/EC.

The patient underwent full staging for lymphoma. Dawson's criteria were used in the differential diagnosis between primary colorectal involvement and GI tract involvement secondary to systemic lymphoma [20]. He had no fever, weight loss or night sweats. A physical examination revealed no alteration. There was no lymphadenopathy and hepatosplenomegaly. Blood-cell count, serum biochemistry and immunoglobulins were either within normal limits or negative. A bone marrow biopsy showed no evidence of lymphoma. His chest X-ray was unremarkable. Computed tomography (CT) of his total body revealed no evidence of extraintestinal involvement. A diagnosis of primary DLBCL was made. Ann Arbor stage 1A was established. Subsequently, he was referred to a hematologist for further management. Since the lymphoproliferative lesion was limited and there was no evidence of disseminated disease, and accounting for the advanced age of patient, it was considered inappropriate to perform surgical resection. He did not receive chemotherapy, but he was referred to follow-up with clinical examinations and CT scans at 6-monthly intervals only. He showed no clinical or radiologic recurrence at the time when we wrote this paper (1 year past).

Discussion

In this article we report a case of primary DLBCL developing within a tubular adenoma with low-grade dysplasia.

Most studies report that lymphomas comprise only 1% to 4% of malignant neoplasms in the GI tract.

Although the GI tract is the most common extranodal location for the development of non-Hodgkin lymphoma (NHL), in adults only 10% to 20% of the primary GI lymphomas occur in the colon. A primary lymphoma of the colon and rectum is an extremely rare entity.

The ileocecal area and ileum are the regions most frequently affected by primary small-intestinal and large-intestinal NHL [16]. Colorectal lymphoma is extremely infrequent, representing less than 0.5% of all primary colorectal neoplasms [16].

Bollen *et al.* report a case of abdominal non-Hodgkin DLBCL in a child [9]. Sikder *et al.* report a case of a 62-year-old Caucasian man showing the presence of a nodule in his rectum that was found to be follicular B-cell

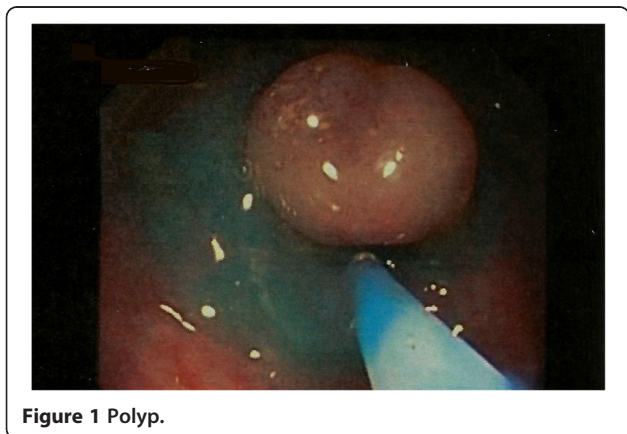


Figure 1 Polyp.

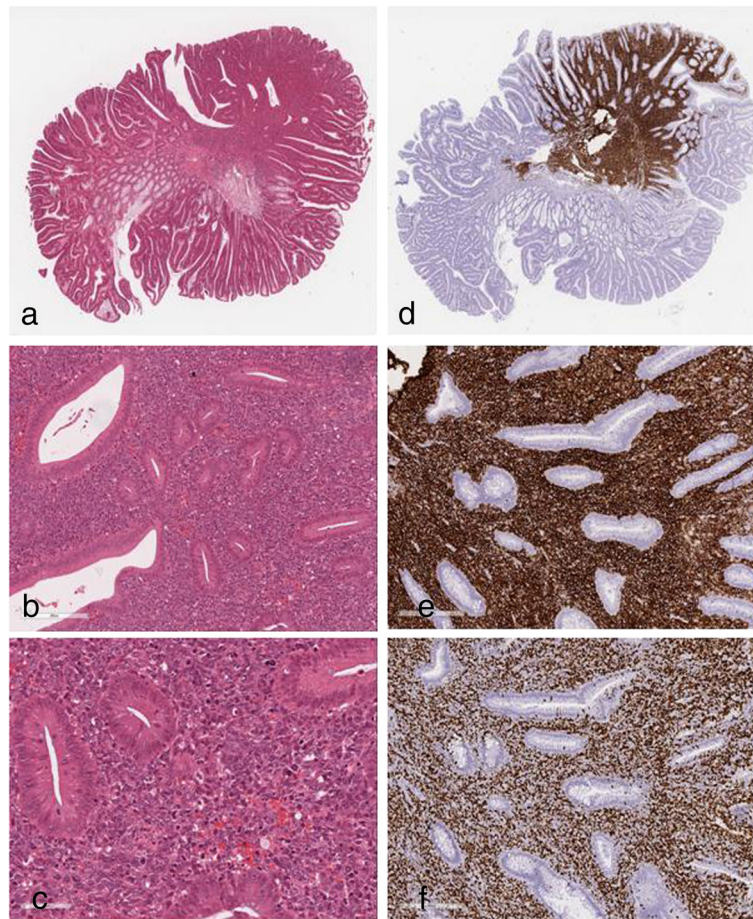


Figure 2 Histological and immunohistochemical stains. (a) Polyp histological section, original magnification $\times 13$; (b) tubular adenoma with low-grade intraepithelial dysplasia and focal localization in the stroma by highly proliferative large lymphoid cells, hematoxylin and eosin, original magnification $\times 160$; (c) and $\times 400$; (d) CD20 $\times 12$; (e) and $\times 100$; (f) Ki-67 $\times 100$.

lymphoma [10]. Damaj *et al.* report 25 patients with primary follicular lymphoma of the GI tract [11]. Multiple case series show an association between rectal adenocarcinoma and lymphoma because they occur at the same site simultaneously [12,13]. Some studies show that the synchronous diagnosis of colorectal malignancy and lymphoma is rare. Marín García *et al.* report a primary DLBCL of the rectum simulating a rectal adenocarcinoma [15].

Many factors and mechanisms may play a role in the occurrence of synchronous colonic carcinoma and lymphoma [21]. Among these are included environmental agents, immune abnormalities and genetic constitution of the patients [22]. Some authors suggested that the lymphomatous process may be the initial event that compromises the patient's immune defenses against the development of colon cancer [23].

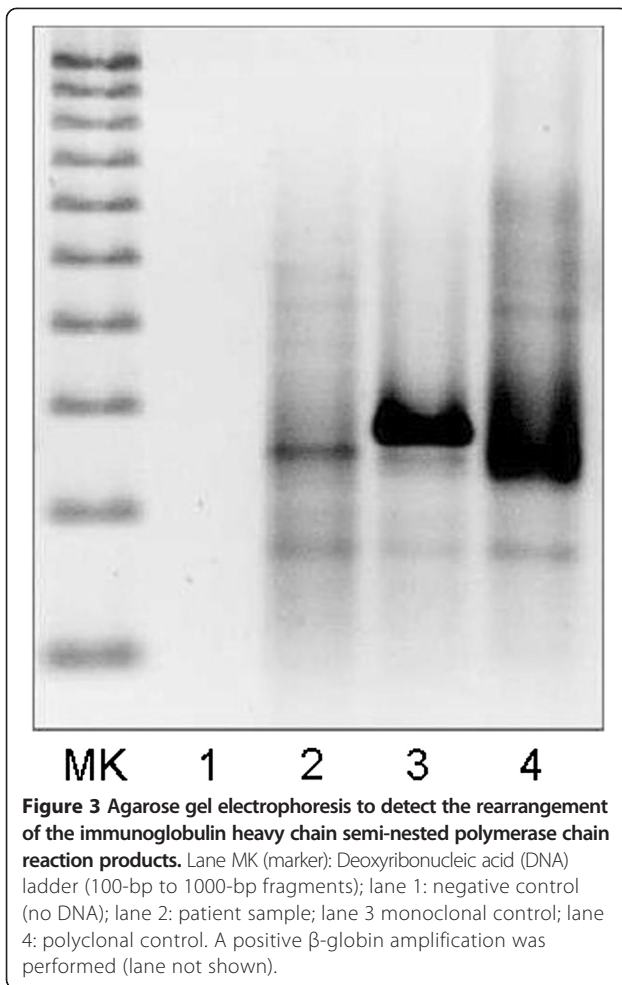
Little is known about the association of adenoma and lymphomas in the colorectal tract and, to the best of our knowledge, few cases have been reported previously in the

literature. Roeb *et al.* present a rare case of synchronous occurrence of a DLBCL initially presenting in a tubular adenoma of the large bowel [16]. Sato *et al.* document a case of T-cell lymphoma associated with a rectal adenoma [17].

In our case, we did not find a specific familial, medical and social history. We have no attractive hypothesis to explain in this patient the synchronous occurrence of dysplasia and lymphoma. It is probable that the factors implicated in the onset dysplasia are the same triggering the carcinogenic process in lymphoproliferative disease. In addition, we consider that the correlation between decreasing immunity and increasing age may be the risk factor for this case.

In general, comprehensive history taking and physical examination may reveal the possible etiologies of some specific lymphoma types and provide information for their further assessment and management.

In this clinical case, a crucial role is represented by stadiation pathology. When a patient is suspected to



have a GI lymphoma, staging evaluation for lymphoma is performed, including physical examination; documentation of B symptoms; laboratory evaluation; chest radiograph; CT scan of abdomen, pelvis, and usually chest; bone marrow biopsy; lumbar puncture in lymphoblastic, Burkitt's lymphoma and DLBCL with positive marrow biopsy; and gallium scan (single photon emission computed tomography) or positron emission tomography scan in large B-cell lymphoma [24].

Although Ann Arbor staging with Musshoff modification is commonly considered the best classification to stage GI lymphomas, the question about the staging strategy remains open due to various available staging systems [2]. GI lymphomas remain the subject of much debate with regard to therapeutic approaches. The role of surgery in primary lymphoma of the rectum is controversial. In most cases of GI primary B lymphomas, surgery has been suggested as the most suitable treatment. The choice of treatment is dependent on the age of patients, clinical scenario, histological subtype, extent and burden of

the disease, and comorbidity, besides other factors [2]. This case showed that a primary rectal lymphoma could be treated without surgical resection or chemotherapy. There is strong evidence that the treatment should be defined on the basis of the clinical condition of the patient, evaluating on a case-by-case basis [24]. Lymphoma of the rectum should be considered a different clinicopathological entity with different behaviors, histology and clinical presentation.

The optimal management of primary lymphoma of the colon and rectum has never been determined by randomized trials. In fact, the small number of patients with various histological subtypes and different stage at presentation results in an unclear protocol for the treatment of primary colorectal lymphoma [25].

Conclusions

Little evidence is available regarding the prognosis of primary colorectal lymphomas. We believe that the case reported here will provide additional information on the history and macroscopic appearance of lymphomas presenting in an unusual location. The epidemiology, clinical presentation, histopathologic subtypes, as well as radiological presentation of GI lymphomas are very important to formulate accurate diagnosis, staging and treatment of the disease with the promising novel techniques. To report additional cases in the future would be helpful in redefining the diagnostic, prognostic and therapeutic approach.

Consent

Written informed consent was obtained from the patient for publication of this case report and any accompanying images. A copy of the written consent is available for review by the Editor-in-Chief of this journal.

Competing interests

The authors declare that they have no competing interests.

Authors' contributions

FG performed immunohistochemical and molecular assays, analyzed data, molecular studies and wrote the manuscript; CN, GB and GO contributed to the histological examination; BG contributed to perform histological techniques; GS contributed to perform immunohistochemical techniques; EV analyzed and interpreted the clinical data of the patient; VT analyzed and interpreted the patient data regarding histological and immunohistochemical examination and wrote the manuscript. All authors read and approved the final manuscript. VT and FG contributed equally to this work.

Acknowledgements

This work has been supported by funds from the "G.F. Ingrassia" Hospital.

Author details

¹Department of Diagnostic Laboratory, U.O.C. of Pathological Anatomy, "G.F. Ingrassia" Hospital, ASP Palermo, Italy. ²Oncology Unit, "Buon Consiglio Fatebenefratelli" Hospital, Naples, Italy.

Received: 9 August 2013 Accepted: 22 January 2014

Published: 24 March 2014

References

1. Wong MTC, Eu KW: **Primary colorectal lymphomas.** *Colorectal Dis* 2006, **8**:586–591.
2. Ghimire P, Guang-Yao W, Zhu L: **Primary gastrointestinal lymphoma.** *World J Gastroenterol* 2011, **17**(6):697–707.
3. Dionigi G, Andoni M, Rovera F, Boni L, Villa F, Castano P, Bianchi V, Dionigi R: **Primary colorectal lymphomas: review of the literature.** *Surg Oncol* 2007, **16**:S169–S171.
4. Perry PM, Cross RM, Morson BC: **Primary malignant lymphoma of the rectum.** *Dis Colon Rectum* 1986, **29**:821–824.
5. Freeman C, Berg JW, Cutler SJ: **Occurrence and prognosis of extranodal lymphomas.** *Cancer* 1972, **29**:252–260.
6. Henry CA, Berry RE: **Primary lymphoma of the large intestine.** *Am Surg* 1988, **54**:262–266.
7. Bairey O, Ruchlemer R, Shpilberg O: **Non-Hodgkin's lymphomas of the colon.** *Isr Med Assoc J* 2006, **8**:832–835.
8. Quayle FJ, Lowney JK: **Colorectal lymphoma.** *Clin Colon Rectal Surg* 2006, **19**:49–53.
9. Bollen P, Bourgain C, Van Berlaer G, Duville L, Vandenplas Y: **Non-Hodgkin lymphoma presenting as a solitary rectal polyp.** *J Pediatr Gastroenterol & Nutr* 2000, **31**:193–194.
10. Sikder MA, Srinivas S, Vossough S: **Primary low-grade lymphoma of the rectum in an asymptomatic patient.** *Pract Gastroenterol* 2006, Vol XXX(Issue 9).
11. Damaj G, Verkarre V, Delmer A, Solal-Celigny P, Yakoub-Agha I, Cellier C, Mourschhauser F, Bouabdallah R, Leblond V, Lefrère F, Bouscary D, Audouin J, Coiffier B, Varet B, Molina T, Brousse N, Hermine O: **Primary follicular lymphoma of the gastrointestinal tract: a study of 25 cases and a literature review.** *Ann Oncol* 2003, **14**:623–629.
12. Song W, He YL, Han FH, Cai SR, Peng JJ: **Rectal non-Hodgkin lymphoma with concomitant rectal adenocarcinoma: a case report and literature review.** *Zhonghua Wei Chang Wai Ke Za Zhi* 2011, **14**(8):617–619.
13. Sasaki S, Hatanaka K, Saha+ra N, Uekusa T, Hirayama K, Shirahata A, Ishimaru M: **Collision tumor of primary malignant lymphoma and adenocarcinoma in the colon: report of a case.** *Surg Today* 2010, **40**:975–981.
14. Deuk YL, Seong WH, Yeo GC, Woo YL, Byungmo L, Yun KK: **Synchronous T-cell lymphoma in patient with colon cancer: a case report.** *J Korean Surg Soc* 2012, **83**:60–64.
15. Marín García D, Cárdenas Lafuente F, Utrilla Ayala Mdel C, Galán Jurado MV, Jiménez Martín JJ, García Ordóñez MA: **Primary diffuse large B-cell lymphoma of the rectum simulating a rectal adenocarcinoma.** *Gastroenterol Hepatol* 2010, **33**(2):92–98.
16. Roeb E, Rummel M, Blau W, Etschmann B, Gattenlöhner S: **B-cell lymphoma in a tubular adenoma with high-grade dysplasia: a rare extramedullary manifestation of high-grade diffuse large B-cell lymphoma.** *Endoscopy* 2011, **43**:E344–E345.
17. Sato H, Yasumi K, Mizuno Y, Ichikawa T, Honda K, Kuroda M: **Primary T-cell lymphoma associated with tubulovillous adenoma of the rectum: report of a case.** *Surg Today* 2013, **43**(3):317–320.
18. Nikiforova M, His ED, Braziel RM, Gulley ML, Leonard DGB, Nowak JA, Tubbs RR, Vance GH, van Deerlin VM: **Detection of clonal IGH gene rearrangements.** *Arch Pathol Lab Med* 2007, **131**:185–189.
19. van Dongen JJ, Langerak AW, Brüggemann M, Evans PA, Hummel M, Lavender FL, Delabesse E, Davi F, Schuurink E, García-Sanz R, van Krieken JH, Droese J, González D, Bastard C, White HE, Spaargaren M, González M, Parreira A, Smith JL, Morgan GJ, Kneba M, Macintyre EA: **Design and standardization of PCR primers and protocols for detection of clonal immunoglobulin and T-cell receptor gene recombinations in suspect lymphoproliferations: report of the BIOMED-2 Concerted Action BMH4-CT98-3936.** *Leukemia* 2003, **17**:2257–2317.
20. Dawson IM, Cornes JS, Morson BC: **Primary malignant lymphoid tumours of the intestinal tract. Report of 37 cases with a study of factors influencing prognosis.** *Br J Surg* 1961, **49**:80–89.
21. Nishimura Y, Takenaka H, Yoshidome K, Iwase K, Oshima S, Tanaka T: **Primary mesenteric tumor of adult T-cell leukemia/lymphoma: report of a case.** *Surg Today* 1994, **24**:263–267.
22. Quilon JM, Day S, Lasker JC: **Synchronous tumors: Hodgkin disease presenting in mesenteric lymph nodes from a right hemicolectomy for colon carcinoma.** *South Med J* 2004, **97**:1133–1135.
23. Barron BA, Localio SA: **A statistical note on the association of colorectal cancer and lymphoma.** *Am J Epidemiol* 1976, **104**:517–522.
24. Aviles A, Neri N, Huerta-Guzman J: **Large bowel lymphoma: an analysis of prognostic factors and therapy in 53 patients.** *J Surg Oncol* 2002, **80**:111–115.
25. Stanojevic GZ, Nestorovic MD, Brankovic BR, Stojanovic MP, Jovanovic MM, Radojkovic MD: **Primary colorectal lymphoma: an overview.** *World J Gastrointest Oncol* 2011, **3**(1):14–18.

doi:10.1186/1752-1947-8-103

Cite this article as: Genovese et al.: Primary diffuse large B-cell lymphoma developing within a rectal tubular adenoma with low-grade dysplasia: a case report. *Journal of Medical Case Reports* 2014 **8**:103.

Submit your next manuscript to BioMed Central and take full advantage of:

- Convenient online submission
- Thorough peer review
- No space constraints or color figure charges
- Immediate publication on acceptance
- Inclusion in PubMed, CAS, Scopus and Google Scholar
- Research which is freely available for redistribution

Submit your manuscript at
www.biomedcentral.com/submit

