

Prognostic factors in patients with gallbladder adenocarcinoma identified using competing-risks analysis

A study of cases in the SEER database: Erratum

In the article, “Prognostic factors in patients with gallbladder adenocarcinoma identified using competing-risks analysis: A study of cases in the SEER database,”^[1] which appears in Volume 99, Issue 31 of *Medicine*, several changes have been made. A new affiliation for Yuan-long Wei, “Outpatient Department, Xi’an Information Technique Institute of Surveying and Mapping, Xi’an, Shaanxi, People’s Republic of China,” has been added as affiliation e. The original affiliations e and f have been updated to affiliation f and g. ShengPeng Wang’s affiliations have been updated accordingly to f and g.

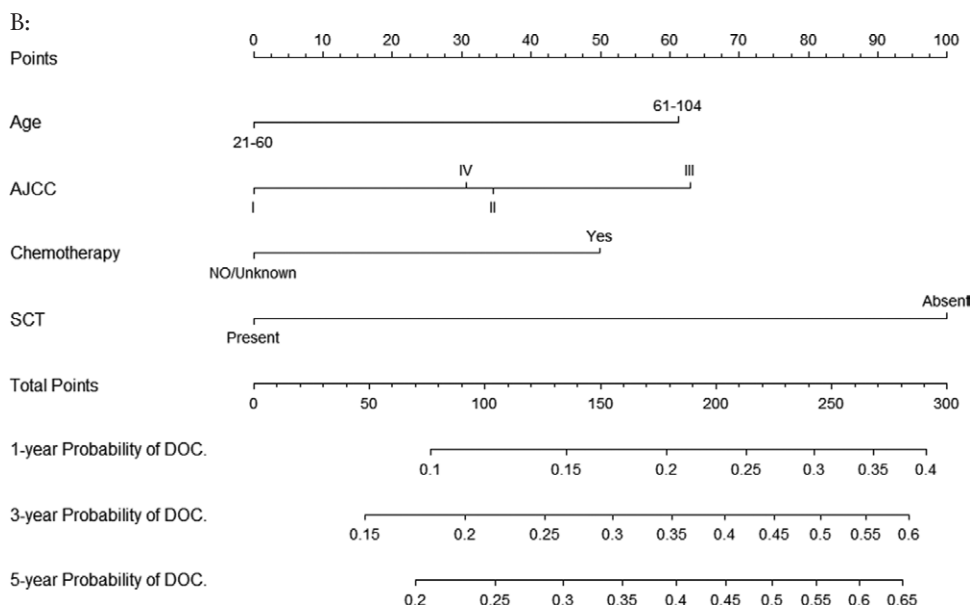
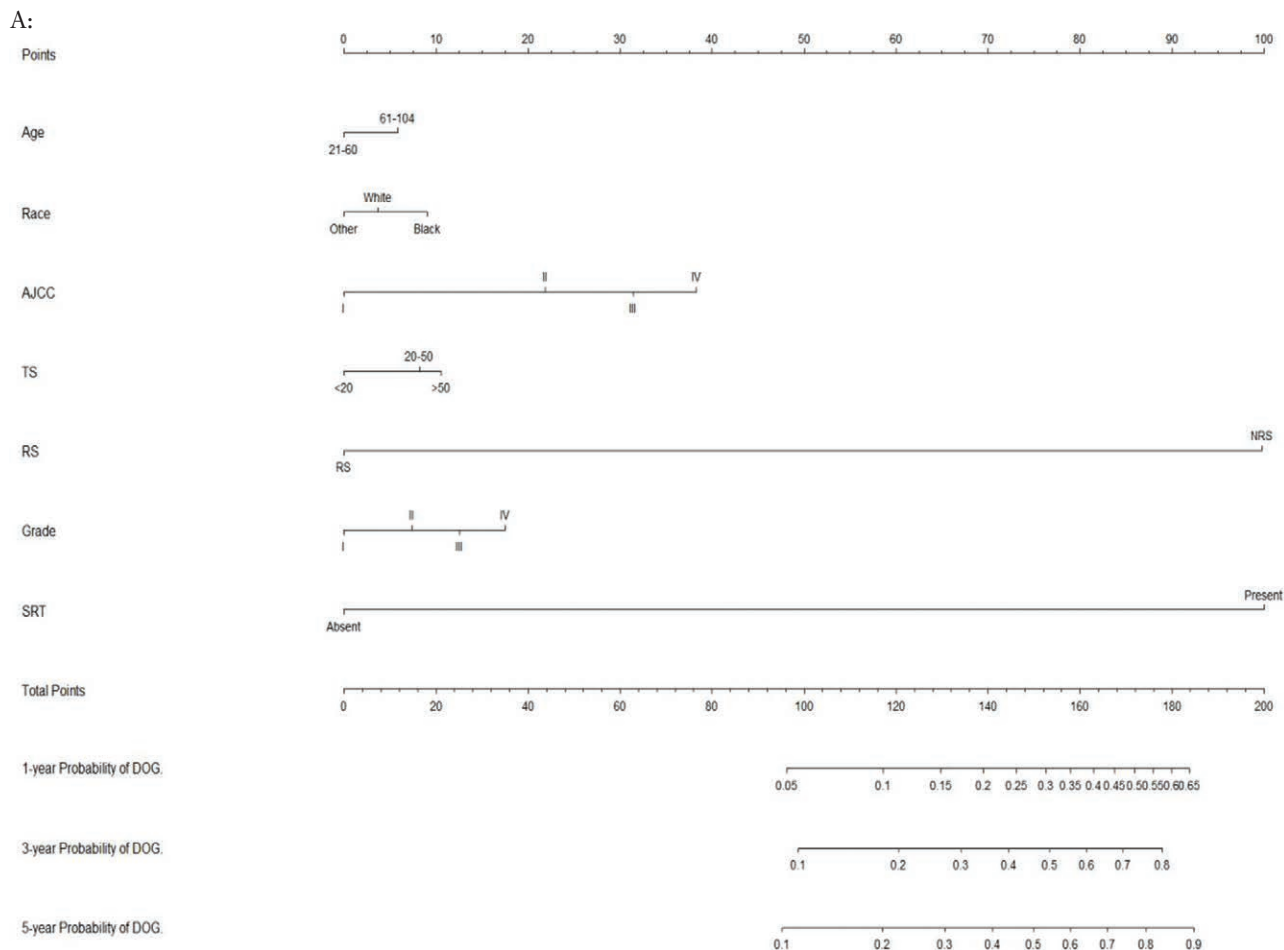
On page 3, “...76.3% (2925) of the patients being older than 60 years” has been corrected to “...76.2% (2925) of the patients being older than 60 years.” “Most of the patients were female (n = 2681, 69.9%), white (n = 2874, 74.9%), and married (n = 3185, 83%)...” has been corrected to “Most of the patients were female (n = 2681, 69.9%), white (n = 2874, 74.9%), and married (n = 3185, 83%)...” “Most of the patients had received surgical treatment (n = 3697, 94.8%), while 739 (19.3%) had

received radiotherapy and 1045 (36.6%)...” has been corrected to “Most of the patients had received surgical treatment (n = 3637, 94.8%), while 739 (19.3%) had received radiotherapy and 1405 (36.6%)...” “Received adjuvant therapy with patients for RCT, SRT, SCT, SRCT is 623 (16.2%), 707 (18.4%), 1284 (33.5%), 5979 (15.6%), respectively” has been corrected to “Received adjuvant therapy with patients for RCT, SRT, SCT, SRCT is 623 (16.2%), 707 (18.4%), 1284 (33.5%), 597 (15.6%), respectively.”

On page 7, “Our study also found that the risk of death is significantly higher among black patients with GBC compared with white patients (sdHR = 0.793, $P = .012$)” has been corrected to “Our study also found that the risk of death is significantly higher among black patients with GBC compared with white patients (sdHR = 0.825, $P = .040$).”

On page 8, “(sdHR = 1.551, 9, $P < .001$)” has been corrected to “(sdHR = 1.551, $P < .001$).” “(sdHR = 1.520, 9, $P < .001$)” has been corrected to “(sdHR = 1.520, $P < .001$).”

Figure 3 has been corrected to:



Reference

[1] Han D, Yang J, Xu F. Prognostic factors in patients with gallbladder adenocarcinoma identified using competing-risks analysis: a study of cases in the SEER database. *Medicine* 2020;99:e21322.