



Soral synapomorphies are significant for the systematics of the *Ustilago-Sporisorium-Macalpinomyces* complex (*Ustilaginaceae*)

A.R. McTaggart^{1,2,3,5}, R.G. Shivas^{1,2}, A.D.W. Geering^{1,2,5}, B. Callaghan², K. Vánky⁴, T. Scharaschkin^{1,3}

Key words

columella
maximum likelihood
morphology
peridium
smut fungi
spore balls
sterile cells
systematics
Ustilaginales

Abstract The genera *Ustilago*, *Sporisorium* and *Macalpinomyces* are a polyphyletic complex of plant pathogenic fungi. The four main morphological characters used to define these genera have been considered homoplasious and not useful for resolving the complex. This study re-evaluates character homology and discusses the use of these characters for defining monophyletic groups recovered from a reconstructed phylogeny using four nuclear loci. Generic delimitation of smut fungi based on their hosts is also discussed as a means for identifying genera within this group. Morphological characters and host specificity can be used to circumscribe genera within the *Ustilago-Sporisorium-Macalpinomyces* complex.

Article info Received: 18 May 2012; Accepted: 3 October 2012; Published: 4 December 2012.

INTRODUCTION

Three genera of smut fungi (subphylum *Ustilaginomycotina*), *Ustilago*, *Sporisorium* and *Macalpinomyces*, contain about 530 described species that all infect grasses (Vánky 2012). Several phylogenetic studies have demonstrated that *Ustilago* and *Sporisorium* together form a monophyletic group within the *Ustilaginomycotina* (Swann & Taylor 1995, Bauer et al. 1997, Begerow et al. 1997, 2004b, 2006, Stoll et al. 2003, 2005). *Macalpinomyces* has an ambiguous position in the *Ustilaginales* as the type species, *M. eriachnes*, sits outside the *Ustilago-Sporisorium* group (Begerow et al. 2006). Morphological characters have proven inadequate for separation of species among the three genera. The three genera are polyphyletic (Stoll et al. 2003, 2005), and collectively form an unresolved complex. Morphological studies (Langdon & Fullerton 1975, Vánky 1991, Piepenbring et al. 1998) and molecular phylogenetic analyses (Stoll et al. 2003, 2005) have not identified characters that define monophyletic groups amongst species within this complex.

Smut fungi in the *Ustilago-Sporisorium-Macalpinomyces* complex either partially or completely destroy the inflorescence of grasses, forming a sorus that contains fungal spores. Four characteristics of the sorus, namely columellae, sterile cells, spore balls and peridia, have been used traditionally to separate *Ustilago*, *Sporisorium* and *Macalpinomyces* (Vánky 2002).

Within the sorus, columellae form a central axis of fungal and host origin (Vánky 2002); sterile cells, either derived from non-sporogenous hyphae or a fungal peridium, are found with the spores (Langdon & Fullerton 1975, 1978); spore balls appear as either an ephemeral or permanent agglomeration of spores (Vánky 2002). A peridium is the outer layer of the sorus and can be composed of host or fungal material (Vánky 2002). Soral characters have had different interpretations by mycologists (Stoll et al. 2005). For example, the columella in *Ustilago porosa* was considered absent by Langdon (1962) but present by Vánky & Shivas (2001). Similarly, *Sporisorium consanguineum* was considered to have a columella by Langdon & Fullerton (1975), but not by Vánky & Shivas (2008). Subsequently, soral morphology has been considered too variable to serve as a reliable character that can separate *Ustilago*, *Sporisorium* and *Macalpinomyces* (Piepenbring 2004, Stoll et al. 2005).

The current study discusses morphological characters in the *Ustilago-Sporisorium-Macalpinomyces* complex. A re-evaluation of their homology is provided in light of the phylogenetic results obtained. The merits of using host specificity and soral synapomorphies are discussed as a basis for delimiting genera.

MATERIALS AND METHODS

Taxon selection

Taxa were selected to represent the main groups recovered in previous studies (Stoll et al. 2003, 2005), with increased sampling of under-represented groups, for example species of *Macalpinomyces* and smut fungi occurring on *Aristida*. In total, this study included 136 species (14 species of *Macalpinomyces*, 81 species of *Sporisorium* and 38 species of *Ustilago*), 35 of which had not previously been evaluated in systematic studies (Table 1). Two distinctive members of the complex, *Anomalomyces panici* and *Melanopsichium pennsylvanicum*, were also included. *Moesziomyces bullatus* was included as an outgroup to the complex based on a relationship reported by Stoll et al. (2005).

¹ Cooperative Research Centre for National Plant Biosecurity, GPO Box 5012, Bruce, ACT 2617, Australia; corresponding author e-mail: alistair.mctaggart@gmail.com.

² Department of Agriculture, Fisheries and Forestry, Ecosciences Precinct, GPO Box 267, Brisbane, Queensland 4001, Australia.

³ EEBS, Faculty of Science and Technology, Queensland University of Technology, 2 George Street, Brisbane, Queensland 4001, Australia.

⁴ Herbarium Ustilaginales Vánky (HUV), Gabriel-Biel-Str. 5, D-72076 Tübingen, Germany.

⁵ Queensland Alliance for Agriculture and Food Innovation, The University of Queensland, Ecosciences Precinct, GPO Box 267, Brisbane, Queensland 4001, Australia.

Table 1 Isolates of *Ustilaginaceae* included in this study.

Species	Specimen no.	Host	Country	ITS	LSU	GenBank no.	EF-1α	GAPDH
<i>Anomalomyces panici</i>	BRIP 46421	<i>Panicum trachyrachis</i>	Australia	DO459348 ¹	DO459347 ¹		–	–
<i>Macalpinomyces arundinellae-setosae</i>	BRIP 47958	<i>Arundinella nepalensis</i>	Australia	HQ013086	–		–	–
	BRIP 51868	<i>Arundinella nepalensis</i>	Australia	–	–		–	HQ013055
<i>Macalpinomyces bursus</i>	Ust. Exs. 844	<i>Themeda quadrivalvis</i>	India	AY740154 ²	–		–	–
<i>Macalpinomyces eragrostellae</i>	Ust. Exs. 960	<i>Eragrostiella bifaria</i>	India	AY740036 ²	AY740089 ²		–	–
<i>Macalpinomyces eriachnes</i>	M 54573	<i>Eriachne aristidea</i>	Australia	AY740037 ²	AY740090 ²		–	–
<i>Macalpinomyces ewartii</i>	BRIP 51818	<i>Sarga timorensis</i>	Australia	HQ013087	HQ013127		HQ013026	HQ013056
<i>Macalpinomyces loudetiae</i>	M 56576	<i>Loudetia flavida</i>	South Africa	AY740151 ²	–		–	–
<i>Macalpinomyces mackinlayi</i>	BRIP 52549	<i>Eulalia mackinlayi</i>	Australia	GU014817	HQ013131		HQ013027	HQ013057
<i>Macalpinomyces neglectus</i>	RB 2056	<i>Setaria pumila</i>	Germany	AY740056 ²	AY740109 ²		–	–
<i>Macalpinomyces simplex</i>	M 56577	<i>Loudetia simplex</i>	Zimbabwe	AY740152 ²	–		–	–
<i>Macalpinomyces spermophorus</i>	H.U.V. 13634	<i>Eragrostis ferruginea</i>	Unknown	AY740171 ²	–		–	–
	BRIP 51858	<i>Sporobolus australasicus</i>	Australia	–	FQ013130		HQ013028	HQ013058
	M 56578	<i>Trichopteryx dregeana</i>	South Africa	AY740039 ²	AY740092 ²		–	–
<i>Macalpinomyces trichopterygis</i>	MP 2630	<i>Loudetopsis chrysothrix</i>	Bolivia	AY740164 ²	–		–	–
<i>Macalpinomyces tristachyae</i>	BRIP 51865	<i>Chrysopogon fallax</i>	Australia	HQ013088	–		HQ013029	HQ013059
<i>Macalpinomyces tubiformis</i>	BRIP 49133	<i>Sporobolus actinocladius</i>	Australia	HQ013089	HQ013125		HQ013030	HQ013060
<i>Macalpinomyces viridans</i>	H.U.V. 17548	<i>Polygonum glabrum</i>	India	AY740040 ²	AY740093 ²		–	–
<i>Melanopsichium pennsylvanicum</i>	Ust. Exs. 833	<i>Paspalum distichum</i>	India	AY740153 ²	AY740153 ²		–	–
<i>Sporisorium absconditum</i>	BRIP 49648	<i>Schizachyrium fragile</i>	Australia	HQ013090	–		–	–
<i>Sporisorium aegyptiacum</i>	Ust. Exs. 756	<i>Schismus arabicus</i>	Iran	AY740129 ²	AY740095 ²		–	–
<i>Sporisorium andropogonis</i>	M 56588	<i>Bothriochloa saccharoides</i>	Ecuador	AY740042 ²	–		–	–
<i>Sporisorium anthistritiae</i>	BRIP 49775	<i>Themeda triandra</i>	Australia	–	AY740042 ²		HQ013031	HQ013061
<i>Sporisorium anthracoidesporum</i>	BRIP 39176	<i>Pseudoraphis spinescens</i>	Papua New Guinea	AY740044 ²	AY740097 ²		–	–
<i>Sporisorium apudae-aristatae</i>	M 56590	<i>Apluda multica</i>	India	AY740045 ²	AY740098 ²		–	–
<i>Sporisorium aristidicola</i>	BRIP 26930	<i>Aristida jericichoensis</i>	Australia	HQ013091	–		HQ013032	–
	BRIP 51871	<i>Aristida</i> sp.	Australia	–	–		–	–
	M 56592	<i>Arthraxon lanceolatus</i>	China	AY740046 ²	AY740099 ²		–	HQ013062
<i>Sporisorium arthraxonis</i>	BRIP 51819	<i>Dichanthium sericeum</i>	Australia	HQ013092	–		–	HQ013063
<i>Sporisorium bothriochloae</i>	BRIP 51854/BRIP 28043	<i>Heteropogon contortus</i>	Australia	HQ013093	–		HQ013033	HQ013064
<i>Sporisorium caledonicum</i>	MP 1974	<i>Cenchrus pilosus</i>	Nicaragua	AY344972 ⁸	AF453943 ²		–	–
<i>Sporisorium cenchri</i>	BRIP 26491	<i>Cenchrus elymoides</i>	Australia	HQ013094	HQ013122		HQ013034	HQ013065
<i>Sporisorium cenchri-elymoidis</i>	Ust. Exs. 407	<i>Chrysopogon fulvus</i>	Sri Lanka	AY344973 ⁸	AY740131 ²		–	–
<i>Sporisorium chrysopogonis</i>	BRIP 42670	<i>Aristida queenlandica</i>	Australia	HQ013095	HQ013132		–	HQ013066
<i>Sporisorium confusum</i>	BRIP 52755	<i>Aristida</i> sp.	Australia	HQ013096	–		–	–
<i>Sporisorium consanguineum</i>	BRIP 51839	<i>Aristida hygrometrica</i>	Australia	HQ013098	–		–	HQ013067
	BRIP 27723	<i>Aristida hygrometrica</i>	Australia	HQ013098	–		–	–
<i>Sporisorium cruentum</i>	Ust. Exs. 687	<i>Sorghum halepense</i>	United States	AY344974 ⁸	AF453939 ²		–	–
<i>Sporisorium culmiperdum</i>	MP 2060	<i>Andropogon gerardii</i>	Honduras	AY344975 ⁸	AF133580 ²		–	–
<i>Sporisorium cymbopogonis-bombycinii</i>	BRIP 52511	<i>Cymbopogon bombycinus</i>	Australia	HQ013099	–		HQ013035	–
<i>Sporisorium destruens</i>	Ust. Exs. 472	<i>Panicum miliaceum</i>	Romania	AY344976 ⁸	–		–	–
<i>Sporisorium dietelianum</i>	H.U.V. 20560	<i>Tripsacum</i> sp.	Mexico	AY998100 ³	–		–	–
<i>Sporisorium dimeriae-ornithopodae</i>	Ust. Exs. 472	<i>Dimeria ornithopoda</i>	India	AY344977 ⁸	AY740132 ²		–	–
<i>Sporisorium doidegae</i>	BRIP 49669	<i>Bothriochloa ewartiana</i>	Australia	–	HQ013126		HQ013036	HQ013068
	M 56595	<i>Capillipedium spicigerum</i>	Australia	–	–		–	–
<i>Sporisorium elionuri</i>	MP 2601	<i>Elionurus multicus</i>	Bolivia	AY740047 ²	–		–	–
<i>Sporisorium enteromorphyum</i>	M 56602	<i>Themeda triandra</i>	South Africa	AY740157 ²	–		–	–
<i>Sporisorium erythraeense</i>	Ust. Exs. 849	<i>Hackelochloa granularis</i>	India	AY740158 ²	–		–	–
<i>Sporisorium everhartii</i>	MP 2270	<i>Andropogon virginicus</i>	Cuba	AY740049 ²	AY740102 ²		–	–
<i>Sporisorium fallax</i>	BRIP 27687	<i>Chrysopogon fallax</i>	Australia	AY740159 ²	–		–	–
<i>Sporisorium fastigiatum</i>	MP 1976	<i>Andropogon angustatus</i>	Nicaragua	AY333940 ⁴	–		–	–
<i>Sporisorium formosanum</i>	Ust. Exs. 688	<i>Panicum repens</i>	Taiwan	AY344978 ⁸	AY740133 ²		–	–
				AY344979 ⁸	AY740134 ²		–	–

<i>Sporisorium foveolati</i>	MP 2365	<i>Eremopogon foveolatus</i>	Canary Islands	AY740050 ²	AY740103 ²	-	-
<i>Sporisorium fraserianum</i>	BRIP 49668	<i>Aristida nitidula</i>	Australia	HQ013100	-	-	-
<i>Sporisorium heteropogonicola</i>	BRIP 51822	<i>Heteropogon contortus</i>	Australia	HQ013101	HQ013037	-	HQ013069
<i>Sporisorium holwayi</i>	MP 1271	<i>Andropogon bicornis</i>	Panama	AY344980 ⁸	-	-	-
<i>Sporisorium hwangense</i>	M 56607	<i>Sporobolus panicoides</i>	Zimbabwe	AY740051 ²	AY740104 ²	-	-
<i>Sporisorium isleimatis-ciliati</i>	BRIP 51870	<i>Isellema</i> sp.	Australia	HQ013102	-	-	HQ013070
	BRIP 52517	<i>Isellema</i> sp.	Australia	-	HQ013040	-	-
<i>Sporisorium lacrymae-jobi</i>	M 56611	<i>Coix lacryma-jobi</i>	India	AY740052 ²	AY740105 ²	-	-
<i>Sporisorium lanigeri</i>	BRIP 46819	<i>Cymbopogon ambiguus</i>	Australia	HQ013103	-	-	-
<i>Sporisorium lepturi</i>	Ust. Exs. 966	<i>Hemarthria uncinata</i>	Australia	AY344981 ¹⁸	AY740135 ²	-	-
<i>Sporisorium loudetiae-pedicellatae</i>	M 56615	<i>Loudetia pedicellata</i>	South Africa	AY740053 ²	AY740106 ²	-	-
<i>Sporisorium manilense</i>	Ust. Exs. 854	<i>Sacciolepis indica</i>	India	AY740059 ²	AY740112 ²	-	-
<i>Sporisorium mexicanum</i>	H.U.V. 20498	<i>Andropogon</i> sp.	Mexico	AY98101 ³	-	-	-
<i>Sporisorium mishrae</i>	Ust. Exs. 967	<i>Apluda mutica</i>	India	AY344983 ⁸	AY740136 ²	-	-
<i>Sporisorium mitchellii</i>	BRIP 52538	<i>Isellema</i> sp.	Australia	-	HQ013041	-	-
<i>Sporisorium modestum</i>	M 56617	<i>Enneapogon avenaceus</i>	Australia	AY740054 ²	AY740107 ²	-	-
<i>Sporisorium monakai</i>	M 56618	<i>Isachne globosa</i>	Australia	AY740161 ²	-	-	-
<i>Sporisorium morakoi</i>	BRIP 52504/Ust. Exs. 851	<i>Heteropogon contortus</i>	Australia/Indonesia	HQ013104	AF453940 ²	-	HQ013071
<i>Sporisorium mutabile</i>	BRIP 44111	<i>Cymbopogon refractus</i>	Australia	HQ013105	-	-	-
<i>Sporisorium nealii</i>	M 56621	<i>Heteropogon melanocarpus</i>	India	AY740055 ²	AY740108 ²	-	-
<i>Sporisorium nervosum</i>	BRIP 27019/M 56622	<i>Sehima nervosum</i>	Australia	HQ013106	AY740110 ²	-	-
<i>Sporisorium occidentale</i>	Ust. Exs. 758	<i>Andropogon gerardii</i>	United States	AY344985 ⁸	AY740137 ²	-	-
<i>Sporisorium ophiuri</i>	HB 20	<i>Rottboellia cochinchinensis</i>	Unknown	AY740019 ²	AJ236136 ²	-	-
<i>Sporisorium ovarium</i>	MP 1871	<i>Urochloa fasciculata</i>	Mexico	AY740020 ²	AJ236137 ²	-	-
<i>Sporisorium panic- leucophaei</i>	BRIP 43942	<i>Paspalidium caespitosum</i>	Australia	HQ170519	-	-	-
<i>Sporisorium paspali</i>	DAR 58832a	<i>Digitaria brownii</i>	Australia	AY740035 ²	AY740088 ²	-	-
<i>Sporisorium penniseti</i>	MP 2101	<i>Paspalum notatum</i>	Australia	AY344982 ⁸	AF453944 ²	-	-
<i>Sporisorium penniseti</i>	MP 2367	<i>Pennisetum setaceum</i>	Cuba	AY740130 ²	AY740130 ²	-	-
<i>Sporisorium provinciale</i>	Ust. Exs. 690	<i>Andropogon distachyos</i>	Canary Islands	AY344971 ¹⁸	AY740138 ²	-	-
<i>Sporisorium provinciale</i>	Ust. Exs. 759	<i>Andropogon gerardii</i>	Greece	AY344987 ⁸	AY740706 ²	-	-
<i>Sporisorium pseudochinolaenae</i>	Ust. Exs. 853	<i>Pseudechinolaena polystachya</i>	United States	AY344988 ⁸	AY740139 ²	-	-
<i>Sporisorium pulverulentum</i>	M 56627	<i>Saccharum strictum</i>	Indonesia	AY344989 ⁸	AY740162 ²	-	-
<i>Sporisorium queenslandicum</i>	BRIP 49706	<i>Sehima nervosum</i>	Yugoslavia	AY740162 ²	-	-	-
<i>Sporisorium rarum</i>	BRIP 49134	<i>Elulalia aurea</i>	Australia	HQ013107	-	-	HQ013072
<i>Sporisorium relianum</i>	Ust. Exs. 527	<i>Sorghum halepense</i>	Australia	HQ013108	-	-	-
	Sr326	<i>Sorghum</i> sp.	Greece	AY740163 ²	AY740163 ²	-	-
<i>Sporisorium ryleyi</i>	BRIP 49713	<i>Sarga timorense</i>	United States	-	-	-	-
<i>Sporisorium scitamineum</i>	MP 541	<i>Saccharum</i> sp.	Australia	HQ013109	-	-	DQ352815 ⁵
	Bf532	<i>Saccharum</i> sp.	Costa Rica	AY740070 ²	AY740147 ²	-	HQ013073
<i>Sporisorium sehimatis</i>	BRIP 49671	<i>Sehima nervosum</i>	Brazil	-	-	-	-
<i>Sporisorium setariae</i>	BRIP 49636	<i>Setaria surgens</i>	Australia	HQ013110	-	-	-
	BRIP 26910	<i>Setaria surgens</i>	Australia	HQ013111	-	-	-
	MP 2036a	<i>Sorghum bicolor</i>	Nicaragua	-	-	-	HQ013075
	CBS 104.17	<i>Sorghum</i> sp.	Indonesia	AY740021 ²	AF009872 ⁶	-	-
<i>Sporisorium spinulosum</i>	HMAS 193085	<i>Capillipedium parviflorum</i>	Indonesia	-	-	-	-
<i>Sporisorium tenue</i>	BRIP 48629	<i>Bothriochloa decipiens</i>	China	GU139172 ⁷	GU139171 ⁷	-	-
<i>Sporisorium themedae-arguentis</i>	Ust. Exs. 855	<i>Themeda arguens</i>	Australia	HQ013112	-	-	-
<i>Sporisorium trachypogonicola</i>	MP 2463	<i>Trachypogon plumosus</i>	Indonesia	AY344991 ¹⁸	AY740140 ²	-	-
<i>Sporisorium trachypogonis-plumosi</i>	M 56635	<i>Trachypogon plumosus</i>	Cuba	AY344992 ⁸	AY740141 ²	-	-
<i>Sporisorium tumefaciens</i>	BRIP 47730	<i>Elulalia trispicata</i>	Venezuela	AY740060 ²	AY740113 ²	-	-
<i>Sporisorium vanderystii</i>	Ust. Exs. 231	<i>Chrysopogon aciculatus</i>	Australia	HQ13113	-	-	-
<i>Sporisorium veracruzianum</i>	MP 2372	<i>Hyparrhenia hirta</i>	Sri Lanka	AY344969 ⁸	AY740128 ²	-	-
<i>Sporisorium verticillium</i>	MP 735	<i>Panicum viscidellum</i>	Canary Islands	AY740058 ²	AY740111 ²	-	-
<i>Sporisorium whiteochoae</i>	BRIP 49748	<i>Sarga plumosum</i>	Costa Rica	AY344993 ⁸	AY740114 ²	-	-
<i>Sporisorium whiteochoae</i>	BRIP 51860	<i>Whiteochoa semitonsa</i>	Australia	HQ013114	HQ013134	-	HQ013077
<i>Sporisorium wynaadense</i>	BRIP 27640	<i>Sarga leiocladum</i>	Australia	HQ013115	-	-	HQ013078
<i>Sporisorium xerofasciculatum</i>	BRIP 49682	<i>Xerochloa laniflora</i>	Australia	HQ013116	HQ013049	-	HQ013079
			Australia	HQ013117	-	-	-

Table 1 (cont.)

Species	Specimen no.	Host	Country	ITS	LSU	GenBank no.	EF-1 α	GAPDH
<i>Ustilago affinis</i>	G. Rivera s.n.	<i>Stenotaphrum secundatum</i>	Costa Rica	AY344995 ⁹	AF133581 ²	–	–	–
<i>Ustilago altitis</i>	Ust. Exs. 418 BRIP 52543	<i>Triodia pungens</i> <i>Triodia</i> sp.	Australia Australia	AY740166 ²	–	–	–	–
<i>Ustilago austro-africana</i>	M 56516	<i>Enneapogon cenchroides</i>	Zimbabwe	AY740061 ²	–	–	–	–
<i>Ustilago avenae</i>	DB 559	<i>Avena barbata</i>	Germany	AY344997 ⁹	AF453933 ²	–	–	–
<i>Ustilago bouriqueti</i>	M 56517	<i>Stenotaphrum dimidiatum</i>	La Réunion	AY740167 ²	–	–	–	–
<i>Ustilago bromivora</i>	H.U.V. 19322	<i>Bromus catharticus</i>	Argentina	AY740064 ²	–	–	–	–
<i>Ustilago bullata</i>	MP 2363	<i>Bromus diandrus</i>	Canary Islands	AY740065 ²	–	–	–	–
<i>Ustilago calamagrostidis</i>	M 56518	<i>Calamagrostis epigeios</i>	Bulgaria	AY344998 ⁸	–	–	–	–
<i>Ustilago crameri</i>	Ust. Exs. 995	<i>Setaria italica</i>	India	AY740143 ²	–	–	–	–
<i>Ustilago curta</i>	M 56514/BRIP 26929	<i>Tripogon loliformis</i>	Australia	AY740165 ²	–	–	–	–
<i>Ustilago cynodontis</i>	MP 1838/BRIP 51207	<i>Cynodon dactylon</i>	Mexico	AY345000 ⁸	AF009881 ²	HQ013050	HQ013080	HQ013081
<i>Ustilago davisii</i>	H.U.V. 19252	<i>Glyceria multiflora</i>	Argentina	AY740169 ²	–	–	–	–
<i>Ustilago drakensbergiana</i>	M 56523	<i>Digitaria tricholaenoides</i>	South Africa	AY740170 ²	–	–	–	–
<i>Ustilago echinata</i>	Ust. Exs. 540	<i>Phalaris arundinacea</i>	Germany	AY345001 ⁸	–	–	–	–
<i>Ustilago esculenta</i>	Ust. Exs. 590	<i>Zizania latifolia</i>	Taiwan	AY345002 ⁸	AF453937 ²	–	–	–
<i>Ustilago filliformis</i>	RB 3011	<i>Glyceria fluitans</i>	Germany	AY740066 ²	AF740120 ²	–	–	–
<i>Ustilago hordei</i>	Ust. Exs. 784 Uh362	<i>Hordeum vulgare</i> <i>Hordeum</i> sp.	Iran Canada	AY345003 ⁸	AF453943 ²	–	DQ352832 ⁵	DQ352820 ⁵
<i>Ustilago inaltitis</i>	BRIP 49123	<i>Triodia longiloba</i>	Australia	HQ013118	–	–	–	–
<i>Ustilago ixophori</i>	MP 2194	<i>Ixophorus unisetus</i>	Costa Rica	AY740067 ²	AY740121 ²	–	–	–
<i>Ustilago lituana</i>	BRIP 46795	<i>Triodia epactia</i>	Australia	HQ013119	–	–	–	–
<i>Ustilago maydis</i>	RB 3093 MS 115	<i>Zea mays</i>	Germany	AY345004 ⁸	–	–	–	–
<i>Ustilago nuda</i>	B-Pbi-4-1-4	<i>Zea mays</i>	Germany	–	AF453938 ⁹	–	–	–
<i>Ustilago pamirica</i>	H.U.V. 17782	<i>Hordeum leporinum</i>	Brazil	–	–	DQ352830 ⁵	DQ352818 ⁵	–
<i>Ustilago phlygicia</i>	Ust. Exs. 887	<i>Bromus gracillimus</i>	Greece	AY740069 ²	AJ236139 ²	–	–	–
<i>Ustilago porosa</i>	BPI 871725	<i>Elymus trachycaulus</i>	Iran	AY345005 ⁸	AY740145 ²	–	–	–
<i>Ustilago schmidiae</i>	BRIP 51842	<i>Sarga timorensis</i>	Turkey	DQ139961 ¹⁰	–	–	–	–
<i>Ustilago schroeteriana</i>	BRIP 26906	<i>Enneapogon polyphyllus</i>	Australia	HQ13120	HQ013128	HQ013051	–	HQ013082
<i>Ustilago sparsa</i>	BRIP 51848	<i>Enneapogon</i> sp.	Australia	–	–	–	–	–
<i>Ustilago sporoboli-indici</i>	Ust. Exs. 887	<i>Paspalum paniculatum</i>	Costa Rica	HQ013121	HQ013129	–	–	HQ013083
<i>Ustilago striiformis</i>	Ust. Exs. 892	<i>Dactyloctenium radulans</i>	India	AY345006 ⁸	AY740146 ²	–	–	–
<i>Ustilago synthesmae</i>	BRIP 39706	<i>Alopecurus pratensis</i>	South Africa	AY345008 ⁸	–	–	–	–
<i>Ustilago tagana</i>	H.U.V. 18286	<i>Sporobolus pyramidalis</i>	India	AY772736 ¹¹	–	–	–	–
<i>Ustilago trichophora</i>	Ust. Exs. 998 M 56562	<i>Alopecurus pratensis</i> <i>Digitaria ternata</i>	Germany	AY740172 ²	–	–	–	–
<i>Ustilago triodiata</i>	MP 2473	<i>Tragus berteronianus</i>	Zimbabwe	AY740071 ²	–	–	–	–
<i>Ustilago tritici</i>	BRIP 49159	<i>Echinochloa colona</i>	Cuba	AY740124 ²	–	–	–	–
<i>Ustilago turcomanica</i>	H.U.V. 17662/BRIP 49124	<i>Echinochloa colona</i>	Australia	AY345009 ²	–	HQ013052	HQ013084	HQ013085
<i>Ustilago vetiveriae</i>	H.U.V. 23	<i>Triodia microstachya</i>	Australia	–	AY740126 ²	HQ013053	–	–
<i>Ustilago xerochloae</i>	H.U.V. 17954 Ust. Exs. 1000 BRIP 49820	<i>Triticum aestivum</i> <i>Eremopyrum distans</i> <i>Vetiveria zizanioides</i> <i>Xerochloa imberbis</i> <i>Xerochloa barbata</i>	Canada Iran India Australia Australia	AF135424 ¹³ AY345011 ² AY345011 ² AY345012 ² –	–	–	–	–

¹ Vánky et al. (2006)² Stoll et al. (2005)³ Cunningham et al. (2005)⁴ Shivas et al. (2004)⁵ Munkacsy et al. (2007)⁶ Begerow et al. (1997)⁷ Vánky & Lutz unpubl. data⁸ Stoll et al. (2003)⁹ Piepenbring et al. (2002)¹⁰ Berner et al. (2007)¹¹ Cunningham & Shivas (2006)¹² Begerow et al. (2006)¹³ Bakker et al. (2000)

Morphological data

Character and character state selection were based on taxonomic descriptions in monographs of the *Ustilaginomycotina* (Vánky 1994, 2012, Vánky & Shivas 2008) and from direct observation of 61 Australian species. Columellae were scored as either absent, stout or filiform. Spore states were classified as single spores, permanent spore balls, ephemeral spore balls or dimorphic spores. Sterile cells were scored as present or absent. The peridium was classified as either host derived, hypertrophied-host derived or fungal derived. These characters were mapped onto the final tree topology using MacClade v. 4.08 (Maddison & Maddison 2001).

DNA extraction

DNA was extracted from 120 smut specimens representing 92 taxa, by a combination of enzymatic and mechanical lysis. Smut sori or spores were mechanically lysed using a QIAGEN TissueLyser with 0.5 mm stainless steel beads, then shaken at 55 °C overnight in SNES buffer (0.01 M sodium phosphate pH 7.6, 0.15 M sodium chloride, 0.005 M EDTA, 1 % SDS) containing proteinase K at a final concentration of 0.8 µg/mL. The purification was then completed using the QIAGEN Genra Puregene kit according to the manufacturer's instructions.

PCR and sequencing

Genomic DNA was amplified by PCR with high fidelity Phusion® DNA Polymerase (Finnzymes) using the manufacturer-specified cycling and reaction conditions. The ITS region was amplified with primers M-ITS1 (Stoll et al. 2003) and ITS4 (White et al. 1990) at 58 °C; the LSU region was amplified with primers LROR and LR5 (Vilgalys & Hester 1990) at 58 °C; the GAPDH locus was amplified with GAPDH-F (CGGTCGATCGGMCG-TATC) and GAPDH-R (GTARCCCCACTCGTTGTCGTA) at 65 °C; the EF-1 α locus was amplified with primers EF-1 α F (GCCCTMTGGAAGTTTCGAGACYCCCA) and EF-1 α R (GAY-ACCGACAGCRACGGTCTG) at 62 °C. PCR products were purified by ethanol precipitation using standard methods (Maniatis et al. 1982). Purified PCR product was sent to MacroGen Korea or the Australian Genome Research Facility, Queensland for sequencing using the forward and reverse primers from amplification. ABI sequence trace files were assembled using ContigExpress® (Invitrogen™). The 165 novel sequences have been deposited in GenBank (Table 1).

Alignment of sequences

Sequences were aligned using the Muscle algorithm (Edgar 2004) included in the MEGA5 software package (Kumar et al. 2008). Alignments of protein-coding loci (GAPDH and EF-1 α) were converted to amino acid sequences in MEGA. The original and curated nucleotide alignments have been deposited as Nexus files in TreeBASE (<http://purl.org/phylo/treebase/phyloids/study/TB2:S11013>). The super-matrix consisted of ITS sequences for 134 taxa, LSU sequences for 91 taxa, EF-1 α sequences for 32 taxa and GAPDH sequences for 35 taxa.

Curation of alignments

Alignments were uploaded to Phylogeny.fr (available at <http://www.phylogeny.fr/>) (Dereeper et al. 2008) and curated in Gblocks to remove poorly aligned positions and divergent regions (Talavera & Castresana 2007). Alignments were trimmed as follows: ITS from 1 140 nucleotides, including gaps, to 448 nucleotides with no gaps; LSU from 609 to 593 nucleotides; EF-1 α from 935 to 926 nucleotides; GAPDH from 1 158 to 769 nucleotides. The final curated super-matrix consisted of 2 736 nucleotides, which was composed of approximately 47 % missing data.

Phylogenetic analyses

Two phylogenetic assessment criteria were implemented: Bayesian inference using MrBayes (Huelsenbeck & Ronquist 2001, Ronquist & Huelsenbeck 2003) and maximum likelihood using RAxML (Stamatakis 2006) and PhyML 3.0 (Guindon et al. 2010). Resulting trees were observed with FigTree (available at <http://www.tree.bio.ed.ac.uk/software/figtree/>). Data and command files for both Bayesian and RAxML analyses and the resulting trees are available at TreeBASE (<http://purl.org/phylo/treebase/phyloids/study/TB2:S11013>). The four loci were included as separate partitions in the maximum likelihood and Bayesian analyses so that each locus could be run under different optimal model parameters.

Maximum likelihood analysis — Maximum likelihood was implemented as a search criterion in RAxML (Stamatakis 2006) and PhyML 3.0 (Guindon et al. 2010). GTRGAMMA was specified as the model of evolution in both programs. The RAxML analyses were run with a rapid Bootstrap analysis (command -f a) using a random starting tree and 1 000 maximum likelihood bootstrap replicates. The PhyML analyses were implemented using the ATGC bioinformatics platform (available at: <http://www.atgc-montpellier.fr/phyml/>), with SPR and NNI tree improvement, and support obtained from an approximate likelihood ratio test (Anisimova et al. 2011).

Bayesian analysis — MrBayes was used to conduct a Markov Chain Monte Carlo (MCMC) search in a Bayesian analysis. Four runs, each consisting of four chains, were implemented until the standard deviation of split frequencies were 0.02. The cold chain was heated at a temperature of 0.25. Substitution model parameters were sampled every 50 generations and trees were saved every 5 000 generations. Convergence of the Bayesian analysis was confirmed using AWTY (Nylander et al. 2008) (available at: <http://ceb.csit.fsu.edu/awty/>). Convergence was not reached even after 40 million generations with all datasets. A user-defined tree obtained from the maximum likelihood analyses was used as a starting point for all of the Bayesian analyses, which helped to improve convergence of the four runs. A burn-in was not used to summarize the values that were created with a user-defined tree.

RESULTS AND DISCUSSION

Eight clades were consistently recovered in a phylogenetic analysis of four molecular loci (Fig. 1). The major clades recovered in this study were similar to those obtained in previous molecular phylogenetic analyses using different assessment criteria. For example, several phylogenetic studies have reconstructed two monophyletic groups in *Sporisorium* (Stoll et al. 2003, 2005, Cunnington et al. 2005, Vánky et al. 2006, Vánky & Lutz 2011), but these studies were not able to separate the two groups using morphological characters. The structure of columellae (Fig. 2), the presence or absence of sterile cells (Fig. 3) and the presence or absence of spore balls (Fig. 4) were traced onto the topology. A discussion of the homology of these characters and their use in identifying the clades of the *Ustilago-Sporisorium-Macalpinomyces* complex follows.

Clade 1

Clade 1 includes *S. sorghi*, the type of *Sporisorium*. The members of this clade share a number of characters.

1. A hardened or stout columella that either replaces the entire inflorescence, for example in *Sporisorium andropogonis*, *S. doidgeae* and *S. scitamineum* (Fig. 5b), or that occurs in all of the ovaries or spikelets of an inflorescence, for example in *S. ryleyi*, *S. sorghi* (Fig. 5d) and *S. rarum* (Fig. 5e).

2. Sterile cells formed from non-sporogenous hyphae that are intermixed with spores in the sorus (Fig. 5c, f), except in *Ustilago porosa* and *Sporisorium culmiperdum*.
3. A peridium derived mainly from host tissue, either from leaf sheaths or the ovary wall.

Taxa in Clade 1 mainly infect grasses belonging to the subfamily *Panicoideae*, in one of two tribes, *Paniceae* or *Andropogoneae*.

The infection is usually systemic and destroys either the entire inflorescence or all of the ovaries or spikelets.

Langdon & Fullerton (1978) examined the soral ontogeny of several species included in Clade 1, namely *Sporisorium andropogonis*, *S. sorghi* and *S. vanderystii*. They observed that the columella began to form after intercellular hyphae became confluent and caused the host cells to proliferate. Hyphae at the periphery of the columella formed a sheath of elongated,

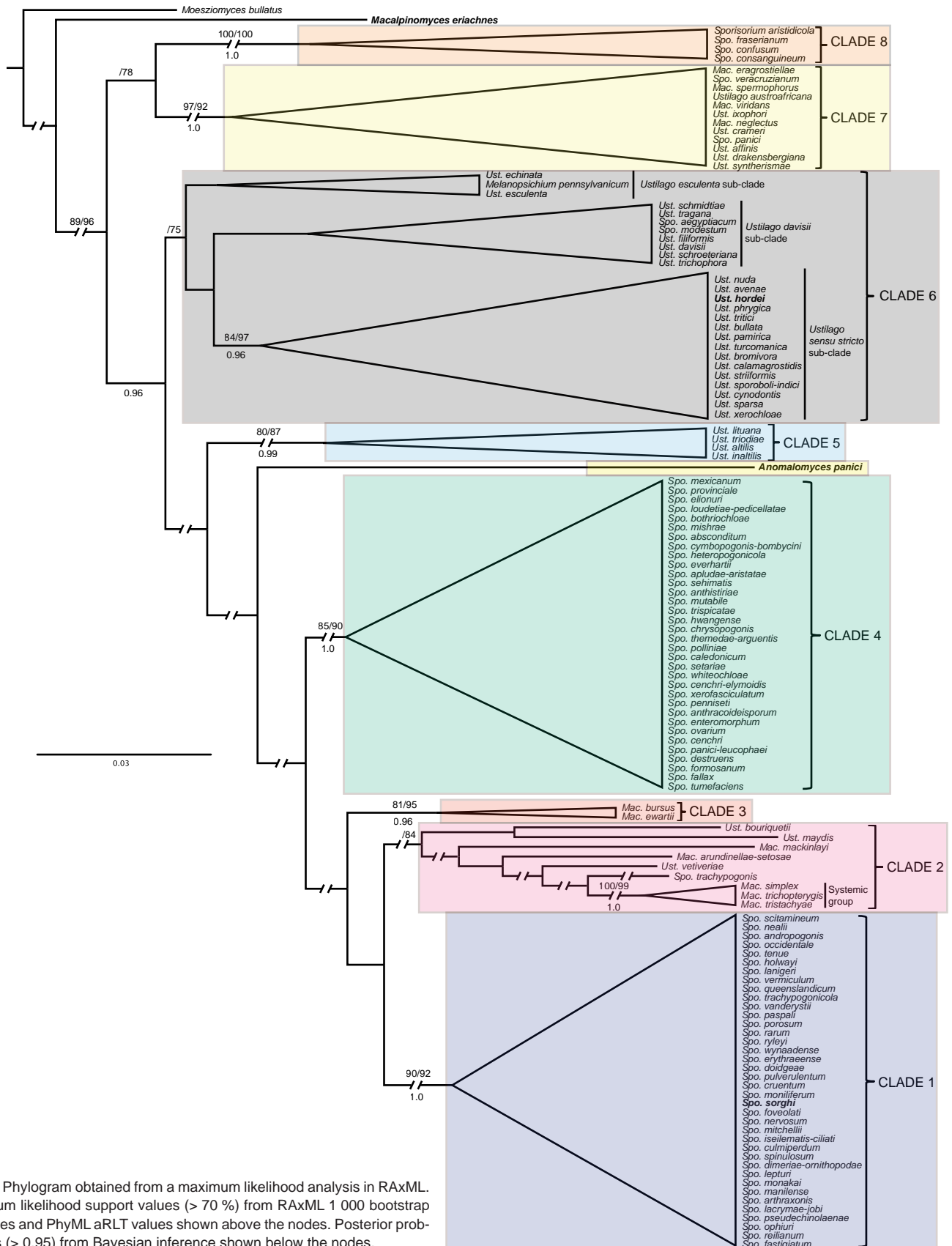


Fig. 1 Phylogram obtained from a maximum likelihood analysis in RAxML. Maximum likelihood support values (> 70 %) from RAxML 1 000 bootstrap replicates and PhyML aRLT values shown above the nodes. Posterior probabilities (> 0.95) from Bayesian inference shown below the nodes.

thick-walled, vacuolate cells. Other hyphae were present inter- and intracellularly in the tissue of the columella.

Columellae of species in Clade 1 are stout and woody due to the peripheral formation of thick-walled, vacuolate cells (Fig. 2). These columellae are cylindrical and grow vertically. Occasionally, more than one columella is present in a sorus, for example in *S. reilianum* (Fig. 5a). Sometimes columellae are branched, for example in *S. doidgeae* (Fig. 5b). Stout columellae are a synapomorphy for species in Clade 1 (Fig. 2)

Langdon & Fullerton (1978) observed that non-sporogenous hyphae partitioned the sporogenous hyphae in sori of *Sporisorium sorghi*. The partitioning hyphae formed groups of hyaline cells that mixed with the spores as the sorus matured. This pattern of development accounts for the chains of sterile cells found in many species of *Sporisorium* (Fig. 3), for example *S. rarum* (Fig. 5f), *S. ophiuri*, *S. themedae* and *S. vermiculum*. Langdon & Fullerton (1978) termed these ‘partitioning cells’,

though subsequent descriptions of smut fungi referred to them as sterile cells. The term sterile cells is maintained to differentiate between the cells formed by non-sporogenous, partitioning hyphae, and the peridial cells formed from the peridium.

Clade 2

Species within Clade 2 have been described in *Ustilago*, *Sporisorium* and *Macalpinomyces*. They share two common morphological characters.

1. The sori are relatively long, twisted and cylindrical, and are derived from hypertrophied host material, as in *Macalpinomyces tubiformis* (Fig 6a), *M. mackinlayi* and *Sporisorium dietelianum*.
2. Sterile cells are usually found within the sori.

There are two types of infection in Clade 2: a localized infection seen in most of the species, or a systemic infection seen in a

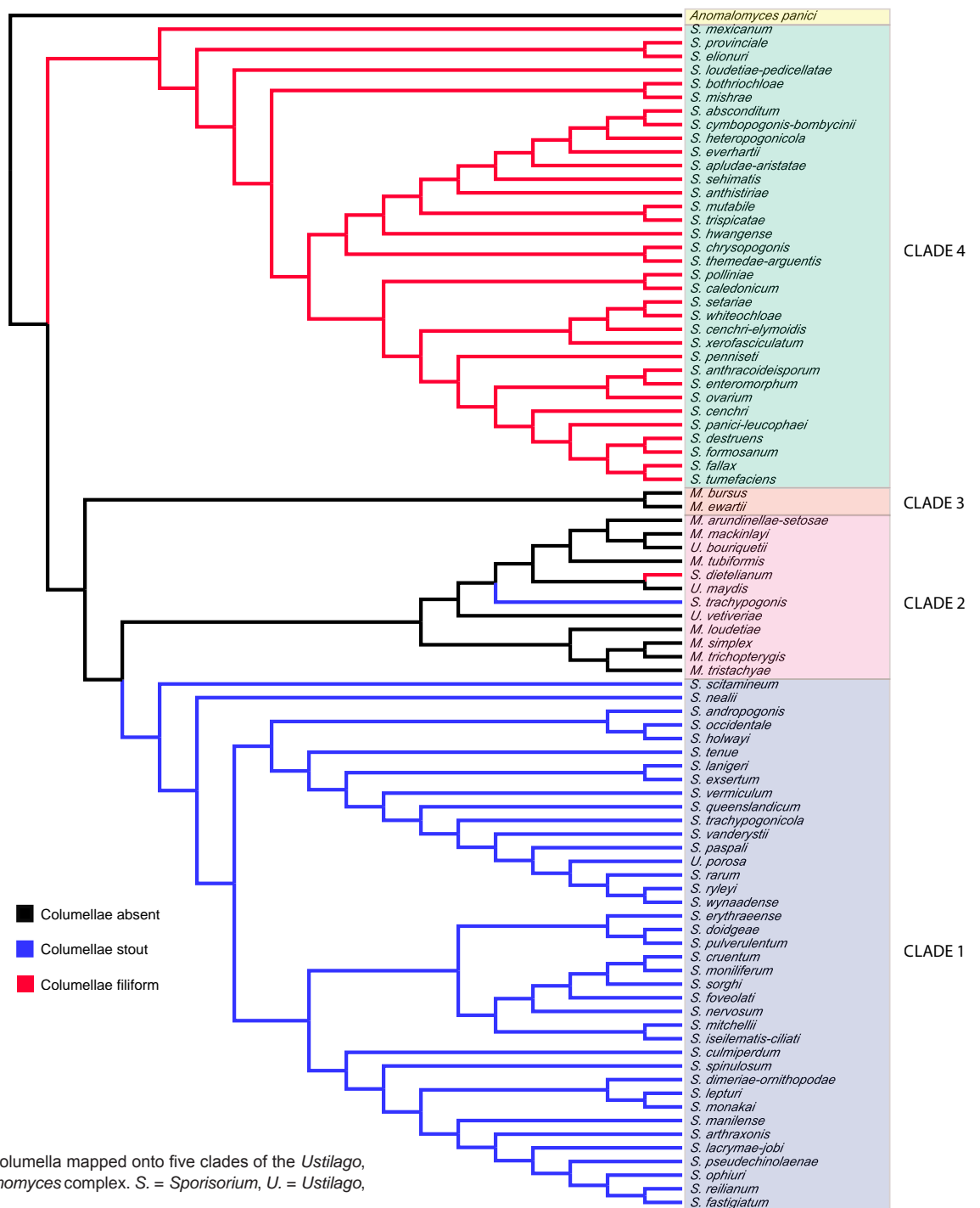


Fig. 2 Structure of the columella mapped onto five clades of the *Ustilago*, *Sporisorium* and *Macalpinomyces* complex. *S.* = *Sporisorium*, *U.* = *Ustilago*, *M.* = *Macalpinomyces*.

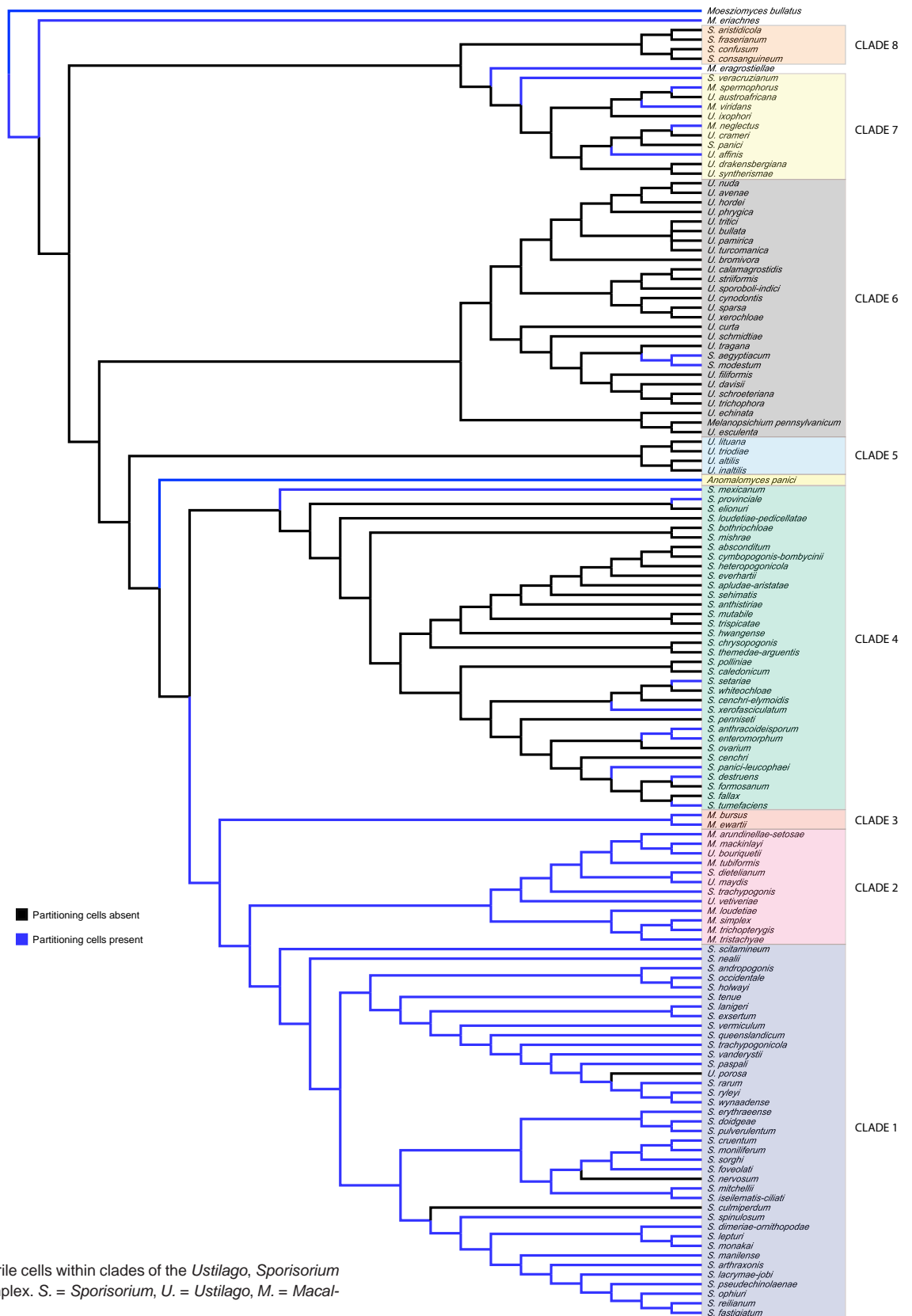


Fig. 3 Distribution of sterile cells within clades of the *Ustilago*, *Sporisorium* and *Macalpinomyces* complex. S. = *Sporisorium*, U. = *Ustilago*, M. = *Macalpinomyces*.

monophyletic group of taxa that destroy the entire inflorescence or infect the culms of the host. The position of the systemic group was ambiguous and only had data from the ITS and LSU regions. It either formed a well-supported monophyletic group within Clade 6, which was also recovered by Stoll et al. (2005) using nuclear rDNA loci; or it occurred sister to Clade 2 when using nuclear rDNA and protein-coding loci, as was also recovered by Vánky & Lutz (2011). The systemic monophyletic group will be discussed separately from Clade 2 because of

its uncertain taxonomic position and distinct appearance on the host.

The systemic group of Clade 2 contained four species, *Macalpinomyces loudetiae* (not included in Fig. 1), *M. simplex*, *M. trichopyrgis* and *M. tristachyae*. These smuts infect grasses in the subfamily *Arundinoideae*, a character first observed by Stoll et al. (2005). The entire inflorescence or every spikelet in the inflorescence is destroyed by tubular sori. Vánky (1995a) described *Endosporisorium*, based on *Sorosporium capillipedii*

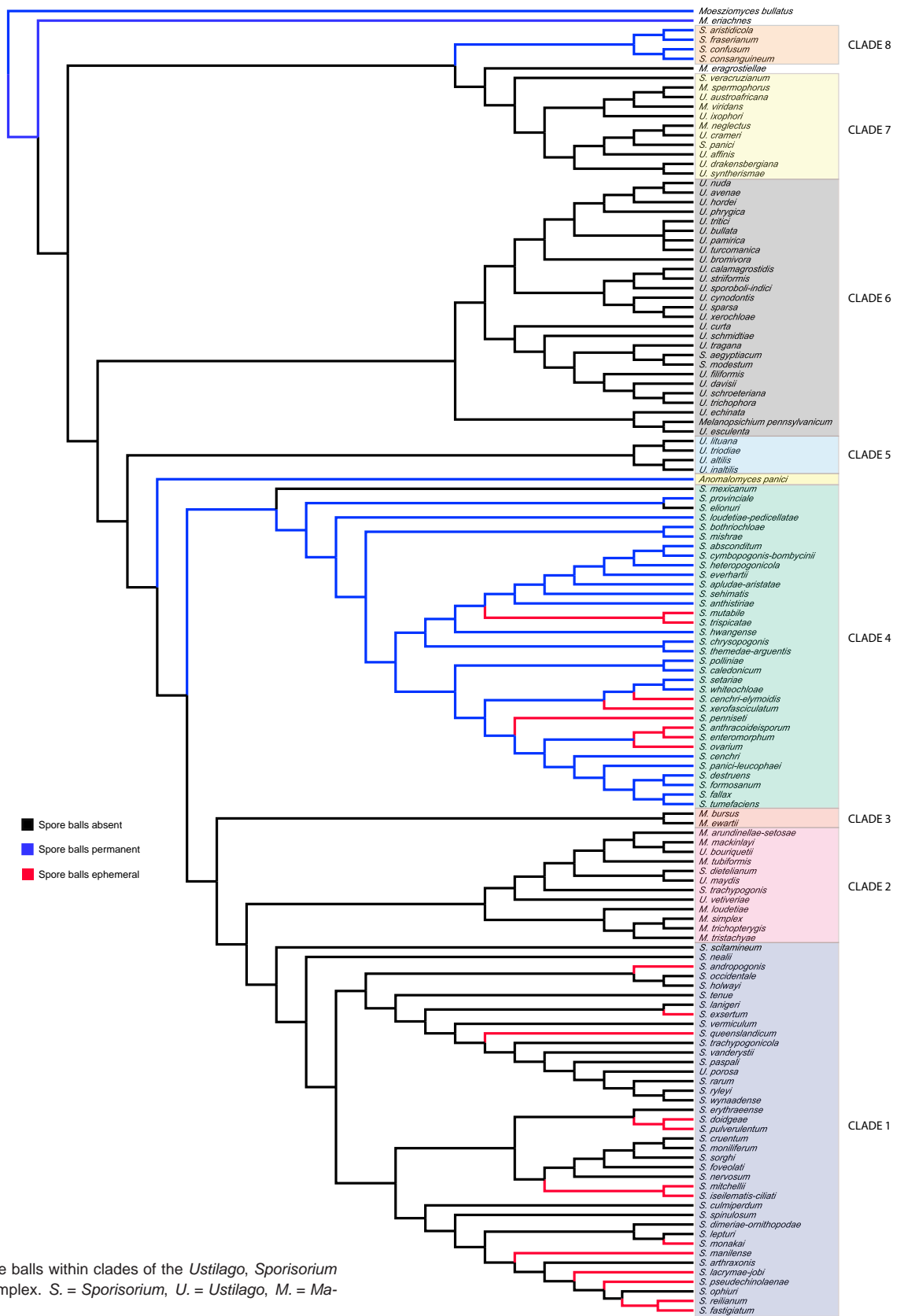


Fig. 4 Presence of spore balls within clades of the *Ustilago*, *Sporisorium* and *Macalpinomyces* complex. S. = *Sporisorium*, U. = *Ustilago*, M. = *Macalpinomyces*.

(syn. *M. chrysopogonicola*), to accommodate smuts with long, tubular, host derived sori that contained sterile cells and lacked columellae (Vánky 1995a, 2002). *Endosporisorium* was later synonymised with *Macalpinomyces*, as Vánky (1997) preferred to have few larger, well-known genera rather than many smaller, unresolved genera. Three other taxa not included in the phylogenetic analysis have a similar appearance to members of the systemic group, namely *M. effusus*, *M. magicus* and *M. ugandensis*. These taxa should be included in future studies

to determine if this method of infection is synapomorphic and whether the separation of *Endosporisorium* from *Macalpinomyces* is warranted.

The remaining taxa in Clade 2 form tubular sori derived from hypertrophied host material in some ovaries of the inflorescence and have sterile cells in the sori, with the exception of *U. maydis*. The model organism *U. maydis* occurred in Clade 2 and was considered more closely related to *Sporisorium* than *Ustilago* by Piepenbring et al. (2002) and Stoll et al. (2005).

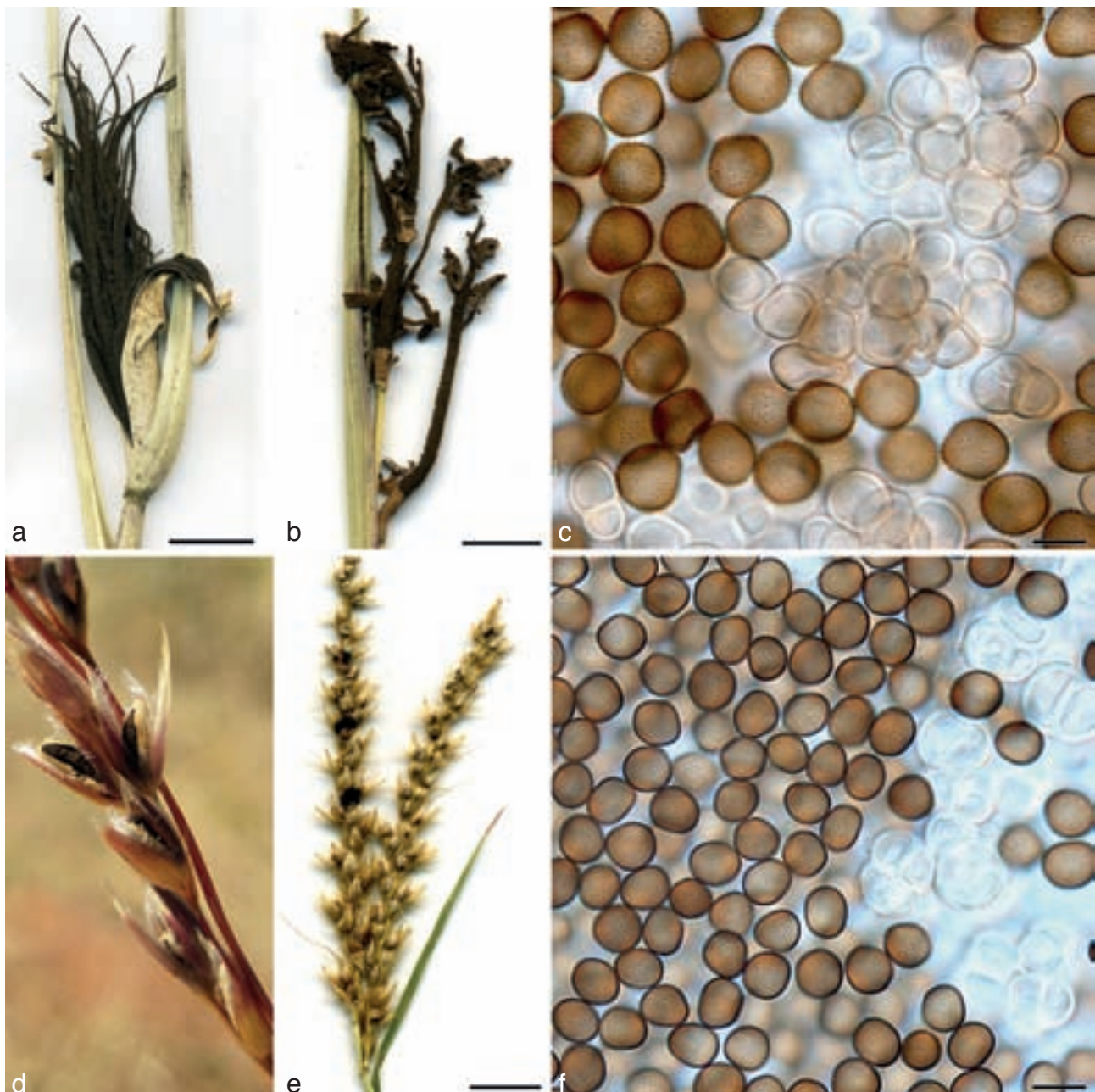


Fig. 5 Clade 1 character states. a. Columellae in *Sporisorium reilianum*; b. branched columella destroying entire inflorescence in *S. doidgeae*; c. spores and sterile cells of *S. themedae*; d. all ovaries of the inflorescence infected in *S. ryleyi*; e. all spikelets of the inflorescence infected in *S. rarum*; f. spores and sterile cells of *S. rarum*. — Scale bars: a, b, e = 1 cm; c, f = 10 μ m.

Brefeld (1912) established *Mycosarcoma* for *Ustilago maydis*, which he diagnosed as different to *Sporisorium sorghi* (as *Ustilago sorghi*) for three reasons: i) the incubation time in the host; ii) the development of the sorus at the site of penetration in the host plant; and iii) the development of aerial conidia. The peridial structure of *Ustilago maydis* was another character that Brefeld (1912) considered different to other species of *Ustilago*. Two of the characters that Brefeld (1912) described are unique characters to Clade 2, excluding the systemic group. The hypertrophied, host derived peridium and the localized infection sites on the host inflorescence are morphological synapomorphies of these taxa. Furthermore, the localized, hypertrophied, often tubular sori mostly contain sterile cells. Piepenbring et al. (2002) concluded from a molecular phylogenetic analysis that *Ustilago maydis* was separate to other *Ustilago* taxa, and that it may warrant placement in the genus originally assigned to it by Brefeld (1912). Other taxa that may belong to Clade 2, based on soral characters, are *Macalpinomyces elionuri-tripsacoidis*, *M. flaccidus*, *M. nodiglumis*, *M. siamensis* and *M. zonotriches*.

Sporisorium dietelianum and *S. trachypogonis*, which are members of Clade 2, were both described as having columellae (Fig. 2). It is unlikely that these structures are homologous to the stout and filiform columellae in Clades 1 and 4, which are synapomorphies for these clades. Vánky (2004) combined *Sporisorium dietelianum* into *Lundquistia* because he did not consider the fascicles of host tissue as true columellae. Vánky (2012) later re-considered this view, equating these fascicles with columellae. The columellae of *Sporisorium dietelianum* are filiform and similar to the columellae of species in Clade 4. *Sporisorium dietelianum* can be distinguished from species in Clade 4 because it does not form either a fungal peridium or spore balls, and it possesses sterile cells.

The columella of *Sporisorium trachypogonis* was described by Vánky (1995b) as well-formed and central, which is typical to those formed in the taxa of Clade 1. *Sporisorium trachypogonis* can be distinguished from other species in Clade 1 by the presence of a localized tubular sorus, rather than a systemic infection.



Fig. 6 Clade 2 character states. a. Localized spikelets infected by *Macalpinomyces tubiformis*; b. spores and sterile cells in *M. tubiformis*. — Scale bars: a = 1 cm; b = 10 µm.

The recently described, monotypic genus, *Tubisorus* was not included in the current study. Vánky & Lutz (2011) recovered *Tubisorus* within a clade congruent to Clade 2. The infection of *Tubisorus* is consistent with other members of Clade 2 that possess long tubular sori. However, *Tubisorus* is described as lacking sterile cells and possessing spore balls, which are two characters considered synapomorphies of Clade 4. The establishment of *Tubisorus* sets a precedent for creation of monotypic genera that have an eclectic mix of characters within Clade 2.

Clade 3

Macalpinomyces bursus and *M. ewartii* occur in a strongly supported clade separate from other clades recovered in the analysis. *Macalpinomyces bursus* and *M. ewartii* are morphologically very similar in appearance and occur on *Themeda* and *Sorghum* respectively, which are members of the tribe *Andropogoneae*. The sori form hypertrophied galls in the host ovaries. Sterile cells formed from partitioning hyphae are present in the sori, which never have a columella. The spores are prominently echinulate. These characters are similar to smuts in Clade 7 that infect grasses in the subfamily *Chloridoideae* and the tribe *Panicaceae*. Host classification is the simplest character to separate these two clades. Other smut taxa that may occur in this clade are *Macalpinomyces bothriochloae*, *M. ovariicolopsis* and *M. pseudanthistiriae*.

Clade 4

Species in Clade 4 either destroy the entire inflorescence, as in *Sporisorium caledonicum* (Fig. 7c) and *S. tumefaciens*; whole racemes, as in *S. enteromorphum*; or are localized in the inflorescence, as in *S. heteropogonicola* (Fig. 7a), *S. anthistiriae* and *S. bothriochloae*. Species in Clade 4 exhibit a number of common morphological characters.

1. Filiform or slender columellae (Fig. 7a, c).
2. Persistent spore balls (Fig. 7d). Two distinct spore types are usually present within the spore ball, namely inner and outer spores. Outer spores are often ornamented and are darker than the inner spores (Fig. 7b).
3. A sorus surrounded by a peridium composed mostly of fungal tissue.
4. Sterile cells derived from non-sporogenous hyphae are rarely present within the sorus.

Langdon & Fullerton (1978) examined the soral ontogeny of two species found in Clade 4, *S. anthistiriae* and *S. caledonicum*. They described the columella of *Sporisorium caledonicum* as a vascular bundle surrounded by host parenchyma, with tissues permeated by inter- and intracellular hyphae. Five to seven columellae were formed by growth of hyphae in the parenchyma between the vascular bundles that separated the central column. Host cells close to intercellular hyphae in some instances were distorted but there was little destruction of host tissue. Langdon & Fullerton (1975) also studied the soral ontogeny of *Sporisorium cryptum*, which had a single columella made of several vascular bundles of parenchyma and mycelium that did not separate.

Species within Clade 4 have filiform or slender columellae (Fig. 2). These columellae are typically flattened in one plane and are never cylindrical. They are flexuous and do not grow vertically without support from the sorus as there are no thickened cells to sustain vertical growth. Many columellae are present in the sorus, for example in *Sporisorium caledonicum*, *S. enteromorphum* and *S. fallax*. A single, filiform columella comprised of several vascular bundles is sometimes present, for example in *Sporisorium bothriochloae* and *S. cryptum*. The columellae formed in this fashion are not hardened or woody, although they are sufficiently robust to persist in the sorus.

The presence of a columella was the defining character of *Sporisorium* (Link 1825, Langdon & Fullerton 1978, Vánky 2002). Members of Clades 1 and 4 that were examined by Langdon & Fullerton (1975, 1978) possessed two differences in development and structure of columellae. The first difference was that peripheral cells of Clade 4 species were not distorted or hardened in contrast to the thickened, vacuolated peripheral cells in Clade 1 species. The second difference was that the central columns were separated into several columellae in *Sporisorium caledonicum* or were made of numerous vascular bundles, as in *S. cryptum*; the columellae of Clade 1 members, *S. andropogonis* and *S. sorghi* were not separated into vascular bundles. Filiform columellae composed of vascular bundles constitute a synapomorphy in species of Clade 4 (Fig. 2).

Many species of *Sporisorium* that possess permanent spore balls were originally described as members of *Sorosporium*. Most of these species belong to Clade 4 (Fig. 4). Langdon & Fullerton (1975) observed spore balls in several *Sporisorium* (as *Sorosporium*) species and described their formation. Coils

of sporogenous hyphae were produced among mycelium that grew from the columellae as the sorus elongated. Coils consisted of two or three intertwined hyphae. Non-sporogenous hyphae, present between the spore balls, disintegrated and did not form sterile cells. Spores formed in spore balls were dimorphic. The peripheral spores developed surface ornamentation in the form of warts or spines and the internal spores were smooth.

Sporisorium panici-leucophaei has spore balls and occurs in Clade 4. According to Vánky (2001) the spore balls of *Lundquistia fascicularis* (syn. *S. panici-leucophaei*) differentiate from non-concentric, sporogenous hyphae. This differed from the mode of formation described for *Sporisorium* by Langdon & Fullerton (1975), and was one reason Vánky (2001) established *Lundquistia*. The mode of spore ball development in *Lundquistia fascicularis* (syn. *S. panici-leucophaei*) cannot be determined from the images provided by Vánky (2001). The spore balls are not agglutinated by sterile cells, as in *Moesziomyces*, and if the sporogenous hyphae are intertwined, as for species in Clade 1, then it is unlikely that the spores would form balls. It is unknown how spore balls are formed in *Sporisorium panici-leucophaei*.

Langdon & Fullerton (1975) observed that non-sporogenous hyphae in *Sporisorium caledonicum*, and three other species that occurred in Clade 4, disintegrated after the spores had matured. Sterile cells are rarely present in species of Clade 4 (Fig. 3). Often peridial cells derived from the fungal peridium were reported as sterile cells for species in Clade 4, for example in *Sporisorium loudetiae-pedicellatae*.

Species within Clade 4 possess a peridium made of fungal cells surrounded by a layer of host cells. Langdon & Fullerton (1975) discussed the formation of this peridium in *Sporisorium caledonicum* and three other smut fungi that occurred in Clade 4. They observed that hyphae adjacent to the peripheral host tissues became enlarged, with vacuolate cells and thickened cell walls. These hyphae were orientated in the direction of the long axis of the sorus and formed a sheath inside the peripheral layer of host tissue. This fungal sheath and the host cells external to it constituted the soral peridium, which surrounded the soral contents.

Members of Clade 4 mostly occur on grasses in the tribes *Andropogoneae* or *Paniceae* in the subfamily *Panicoideae*. One exception is *Sporisorium hwangense* that infects *Sporobolus* in the subfamily *Chloridoideae*. It shares characters with other taxa in Clade 4, namely filiform columellae, spore balls with dimorphic spores, and an absence of sterile cells. Other exam-

ples of smut fungi that share characters in Clade 4 but occur on chloridoid grasses are *S. cynodontis*, *S. normanensis*, *S. parodii* and *S. saharianum*.

Anomalomyces panici

Anomalomyces panici is sister to Clades 1, 2, 3 and 4. In terms of soral morphology, this species is similar to *M. bursus* and *M. ewartii* as it forms globose hypertrophied sori localized in the host ovaries. *Anomalomyces* infects *Panicum trachyrachis* in the tribe *Paniceae*. The sorus is filled with hardened spore balls formed by coiled sporogenous hyphae (Vánky et al. 2006), dimorphic spores and sterile cells. *Anomalomyces* possessed a unique combination of characters that warrants a monotypic genus within the *Ustilago-Sporisorium-Macalpinomyces* complex.

Clade 5

Four taxa that occur on the arid grass *Triodia* form a clade supported in maximum likelihood and Bayesian inference. The Bayesian analysis conducted by Stoll et al. (2005) grouped two *Triodia* taxa with the *Ustilago esculenta* group within Clade 6.

Ustilago altilis and *U. inaltilis* infect the host plant culms, while *U. lituana* and *U. triodiae* destroy the host inflorescence. Near identical ITS sequences for *U. altilis* and *U. inaltilis* (99 % identical over 98 % query coverage in a BLAST search), and *U. lituana* and *U. triodiae* (98 % identical over 88 % query coverage in a BLAST search) demonstrate their very close relationships. A synapomorphy for these four taxa is that they infect species of *Triodia*. They have similar characters to species in Clade 6, in that they do not possess soral structures such as spore balls, columellae or sterile cells.

Clade 6

Stoll et al. (2005) recovered Clade 6 as a weakly supported clade, which included *Melanopsichium pennsylvanicum*. They designated this clade as *Ustilago* s.l. and defined three subgroups within the clade: i) *Ustilago* s.str.; ii) the *Ustilago davisii* group; and iii) the *Ustilago esculenta* group. Further loci were only sequenced for six taxa of Clade 6 in this study. Host and morphological synapomorphies have not been resolved for Clade 6 in our analysis.

Ustilago s.str. clade

Ustilago species that infect grasses in the tribe *Pooideae* formed a well-supported group that included the type species,

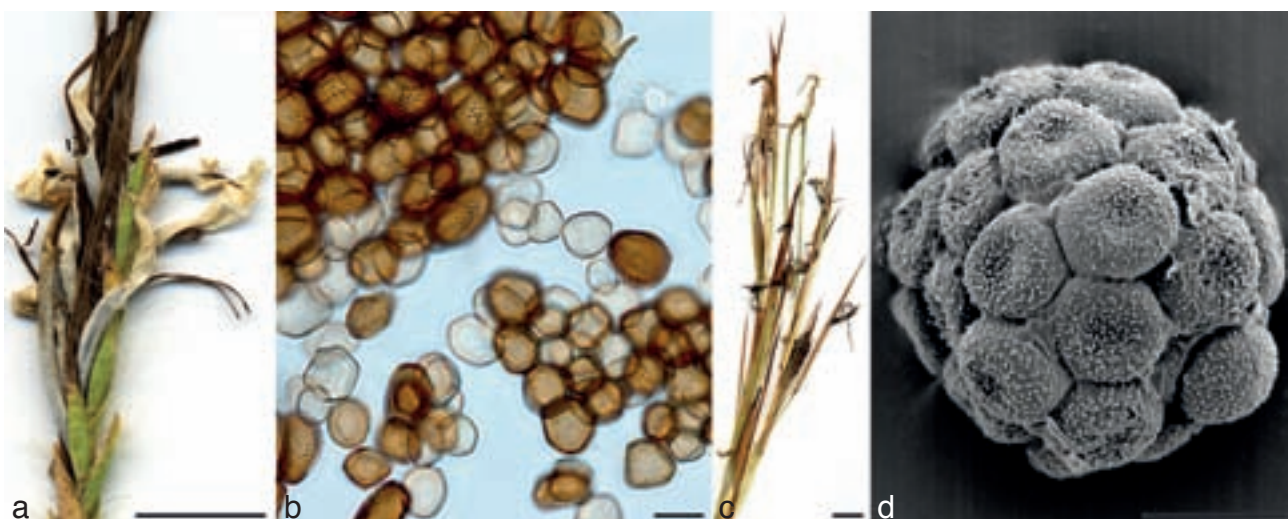


Fig. 7 Clade 4 character states. a. Localized spikelets infected in *Sporisorium heteropogonicola*; b. dimorphic spores of *S. heteropogonicola*; c. entire inflorescence destroyed by *S. caledonicum*; d. permanent spore balls of *S. caledonicum*. — Scale bars: a, c = 1 cm; b, d = 10 µm.

U. hordei. Stoll et al. (2005) also recovered this group with strong support using Bayesian analysis. The stripe smuts *U. calamagrostidis* and *U. striiformis*, as well as *U. sporobolii-indici* (on *Chloridoideae*) were sister to the smuts that destroy the inflorescence of pooid grasses. Stoll et al. (2005) included a subgroup in *Ustilago* s.str. that contained *Ustilago cynodontis*, *U. sparsa* and *U. xerochloae*. These three taxa occur on panicoid and chloridoid grasses. Inclusion of this subgroup and the stripe smuts in *Ustilago* s.str. was supported by both maximum likelihood and Bayesian inference. Taxa within the *Ustilago* s.str. clade lacked three characters that were found in other clades.

1. Absence of sterile cells in the sorus.
2. Absence of spore balls formed by coiled sporogenous hyphae.
3. Absence of a columella derived from host and fungal material.

***Ustilago davisii* group**

Stoll et al. (2005) recovered a strongly supported but unresolved clade containing seven species, *Sporisorium aegypticum*, *S. modestum*, *Ustilago davisii*, *U. filiformis*, *U. schroeteriana*, *U. tragana* and *U. trichophora*. The same clade was recovered in this study, but it was not well supported by bootstrap values (< 70 %) in maximum likelihood or posterior probabilities (< 0.95) in Bayesian inference. *Sporisorium aegypticum*, *S. modestum* and *Ustilago trichophora* were described as having columellae.

Fullerton & Langdon (1968) examined the soral development of *Ustilago trichophora* and concluded that a columella was present, however columellae are not included in the descriptions by Vánky & Shivas (2008) or Vánky (2012). The sori of *Ustilago trichophora* occur in ovaries or on stems and do not have columellae that are homologous to the columellae formed in Clade 1 and 4.

***Ustilago esculenta* group**

Stoll et al. (2005) recovered a weakly supported group that contained several smut fungi found on chloridoid grasses together with the atypical *Ustilago esculenta*, which occurs on *Zizania* in the subfamily *Ehrhartoideae*. *Ustilago curta*, which infects *Tripogon* in the subfamily *Chloridoideae*, either occurred in the *Ustilago esculenta* group, or as sister to Clade 6 or 8. Stoll et al. (2005) recovered *Ustilago curta* (as *U. alcornii*) in the *Ustilago esculenta* group. No synapomorphies were determined for this group.

Stoll et al. (2005) demonstrated a close relationship between *Melanopsichium pennsylvanicum* and the *Ustilago* s.str. group. Our maximum likelihood analyses placed *Melanopsichium* in the *Ustilago esculenta* group rather than sister to the *Ustilago* s.str. group. Only the two nuclear rDNA loci obtained by Stoll et al. (2005) were included for *Melanopsichium* in the combined analysis of molecular loci. Begerow et al. (2004a) discussed the complicated coevolution between smut fungi and their hosts. *Melanopsichium pennsylvanicum* may represent a jump from *Poaceae* to the distantly related *Polygonaceae*.

Clade 7

This clade was recovered in studies by Stoll et al. (2003, 2005) and was strongly supported by both maximum likelihood and Bayesian inference in this study. Stoll et al. (2005) noted that taxa in this clade had a combination of characters observed in *Sporisorium* and *Ustilago*. Taxa in this group have often been placed in *Macalpinomyces* because of the mixed soral characteristics associated with both *Sporisorium* and *Ustilago*. They occur on grasses in the tribe *Paniceae* and the subfamily *Chloridoideae*.

Sterile cells are present in *Macalpinomyces neglectus*, *M. spermophorus*, *M. viridans* and *Ustilago affinis*, but are absent in the other members of this clade. Several taxa formed galls in the host ovaries, while *U. affinis*, *U. drakensbergiana* and *U. syntherismae* destroyed the entire inflorescence similar to taxa in *Ustilago* s.str. Columellae were described in several of the species in this clade, including *Ustilago drakensbergiana*, *Macalpinomyces spermophorus*, *M. neglectus* and *M. viridans*.

The columellae of *U. drakensbergiana* are formed from the remnants of the destroyed inflorescence and are not homologous with columellae of Clade 1 and 4. Vánky (2012) observed that the sori of species of *Macalpinomyces* were deciduous and separated from the host plant at maturity, whereas species of *Sporisorium* had sori that remained attached to the inflorescence because the columella was connected to the host plant. The sori of *M. spermophorus* and *M. viridans* were deciduous and easily removed from the host plant. These columellae are not formed from the host meristem and are not homologous to the columellae of Clade 1 and 4.

A synapomorphic character for Clade 7 was not identified. Subdivision of Clade 7 based on morphology is impractical at this stage, because the characters are highly variable in the group.

Clade 8

Four taxa that destroy the ovaries of *Aristida* formed a well-supported monophyletic group. Stoll et al. (2005) included *Sporisorium consanguineum* in their study, but were unable to determine whether it was sister to, or part of Clade 7. The inclusion of three additional smuts that infect *Aristida* has resulted in a separate, monophyletic group. The smuts on *Aristida* share two morphological characters.

1. Formation of galls in the ovaries of their hosts. They can infect all of the ovaries in an inflorescence (*Sporisorium confusum*, *S. consanguineum*) or be localised in the inflorescence (*S. aristidicola*).
2. The spores are commonly compacted into spore balls formed by coiled sporogenous hyphae, for instance in *Sporisorium consanguineum* (Langdon & Fullerton 1975).

Macalpinomyces eriachnes

Macalpinomyces eriachnes is the sister taxon to the *Ustilago-Sporisorium-Macalpinomyces* complex. Stoll et al. (2005) first indicated that *Macalpinomyces* was a monotypic genus, with *M. eriachnes* the sole representative. This relationship is supported in this study. *Macalpinomyces eriachnes* has giant sterile cells formed from non-sporogenous hyphae (Langdon & Fullerton 1977, Vánky 1996) and a peridium, but lacks a columella. The spore balls of *Macalpinomyces eriachnes* were not formed from coiled sporogenous hyphae (Langdon & Fullerton 1977).

Taxa of uncertain placement

A few taxa moved between clades in trees reconstructed using different datasets and different phylogenetic assessment criteria. These taxa were not supported in any group, although previous analyses have grouped most of these taxa in Clade 6 (Stoll et al. 2005). *Sporisorium aegypticum*, *S. modestum*, *Ustilago schmidtia* and *U. tragana* often grouped together after maximum likelihood analysis, although they were only represented by data from two molecular loci in most cases. These taxa, except for *Ustilago schmidtia*, were included with taxa now assigned to Clade 6 by Stoll et al. (2005).

Maximum likelihood analyses placed *Ustilago curta* in a number of clades. Stoll et al. (2005) recovered *U. curta* (as *U. alcornii*) in the *Ustilago esculenta* group of *Ustilago* s.l. after Bayesian analysis of data from two nuclear rDNA loci. With the addition of

nuclear loci, *U. curta* was often placed as sister to the *Aristida* group or as sister to the *Triodia* group. It is not known to which group *Ustilago curta* belongs.

Can host classification delimit smut genera?

Taxa within the *Ustilago-Sporisorium-Macalpinomyces* complex infect hosts in the *Poaceae*, with the exception of *Melanopsichium*, which occurs on *Polygonaceae*. The systematics of *Poaceae* has been well resolved and the relationships of the subfamilies and tribes are well understood (Hsiao et al. 1999, Kellogg 2000, Stevens 2001, Bouchenak-Khelladi et al. 2008). Host classification has often been used in the classification of smut fungi. Within *Ustilago*, *Sporisorium* and *Macalpinomyces*, putative host specificity is used to differentiate morphologically indistinguishable species (Bauer et al. 2001). Many of the keys to these genera are based on host taxonomy. Higher-level host taxonomy has been used to delimit smut genera, for example *Ustilago* is restricted to members of *Poaceae* (Bauer et al. 2001).

Begerow et al. (2004a) concluded that the phylogenetic relationships between smut fungi and their hosts were not straightforward. While species of *Ustilago* and *Sporisorium* showed evidence for co-speciation, it was considered more likely that smut fungi evolved after their hosts had speciated (Begerow et al. 2004a). Host jumps are evident in Clade 4, which contains taxa that infect grasses in two subfamilies, the *Paniceae* and the *Chloridoideae*.

The phylogenetic analyses of the *Ustilago-Sporisorium-Macalpinomyces* complex recovered several monophyletic groups that shared similar morphological characters and are restricted to hosts in a specific genus, tribe or subfamily. Four smuts that occur on *Aristida* in the subfamily *Aristidoideae* (Stevens 2001) form a monophyletic group in Clade 8. They have similar morphological characters but there are no unique synapomorphies that separate them unambiguously from other species in the complex. Their pathogenicity on hosts in the subfamily *Aristidoideae* is a synapomorphy that distinguishes this clade from other clades in the complex.

Macalpinomyces bursus and *M. ewartii*, which are members of Clade 3, infect hosts in the tribe *Andropogoneae*. They possess morphological characteristics that are similar to some species of Clade 7 that infect hosts in the *Chloridoideae* or *Paniceae*. The occurrence of members of Clade 3 on hosts in the tribe *Andropogoneae* is a synapomorphy that can be used to distinguish *Macalpinomyces bursus* and *M. ewartii* from taxa in Clade 7.

In many cases morphological characteristics are inadequate for recognizing smut taxa. It is proposed that delimitation of smut genera be based on host range, provided monophyletic groups are resolved after molecular phylogenetic analyses. In the absence of contradictory evidence, host subfamily or tribe is a legitimate criterion for generic delimitation in the *Ustilago-Sporisorium-Macalpinomyces* complex.

CONCLUSION

A detailed examination of morphology is required to determine homology and to improve classification (Mooi & Gill 2010), although in many groups of fungi this is impossible. The synapomorphies outlined here based on gross morphology and host coevolution allow confident placement of new taxa within the *Ustilago-Sporisorium-Macalpinomyces* into well delimited clades. Although there are some morphological anomalies, the monophyletic groups are robust and well supported.

Morphological synapomorphies within the *Ustilago-Sporisorium-Macalpinomyces* were identified after incorporation of nuclear

protein coding loci and a thorough study of morphological diversity in Australian taxa. The determination of monophyletic groups and synapomorphic characters within the complex necessitates taxonomic reassessment of some genera and the creation or resurrection of others in future studies. The major outcomes of resolved character homology in the *Ustilago-Sporisorium-Macalpinomyces* complex are:

1. *Sporisorium* can be subdivided by soral characteristics. *Sporisorium* s.str. must be described explicitly to prevent ambiguity for future taxonomic placement of new species.
2. New genera are required for the placement of taxa that form monophyletic groups and no longer fit the definition of *Sporisorium* s.str.
3. *Ustilago maydis* and other taxa with localized tubular sori and usually with sterile cells form a monophyletic group with the morphologically similar systemic group, which usually destroy the entire inflorescence. A taxonomic resolution for these taxa cannot be proposed at this stage, however, if the method of soral infection is synapomorphic within the groups, the two names, *Mycosarcoma* and *Endosporisorium*, will be available for the placement of these taxa.
4. *Macalpinomyces bursus* and *M. ewartii* belong to a monophyletic group that can be differentiated by soral characteristics and host tribe.
5. The monophyletic group of smut fungi that infect *Aristida* can be delimited by soral characteristics and host subfamily.
6. Four smut fungi on *Triodia* form a monophyletic group.
7. *Macalpinomyces* is a monotypic genus, sister to all other taxa in the *Ustilago-Sporisorium-Macalpinomyces* complex (Stoll et al. 2005).
8. Until Clade 2 and 7 are resolved, *Macalpinomyces* will remain a polyphyletic genus.

Acknowledgements We thank Nate Hardy for advice on phylogenetic techniques, and Anthony Young and Paul Campbell for advice and instruction in molecular techniques. ARM would like to acknowledge the support of the Australian Government's Cooperative Research Centre Program.

REFERENCES

- Anisimova M, Gil M, Dufayard J-F, Dessimoz C, Gascuel O. 2011. Survey of branch support methods demonstrates accuracy, power, and robustness of fast likelihood-based approximation schemes. *Systematic Biology* 60: 685–699.
- Bakkeren G, Kronstad JW, Levesque CA. 2000. Comparison of AFLP fingerprints and ITS sequences as phylogenetic markers in Ustilaginomycetes. *Mycologia* 92: 510–521.
- Bauer R, Begerow D, Oberwinkler F, Piepenbring M, Berbee ML. 2001. Ustilaginomycetes. In: McLaughlin DJ, McLaughlin EG, Lemke PA (eds), *Mycota VII Part B Systematics and evolution*: 57–83. Springer-Verlag, Berlin.
- Bauer R, Oberwinkler F, Vánky K. 1997. Ultrastructural markers and systematics in smut fungi and allied taxa. *Canadian Journal of Botany* 75: 1273–1314.
- Begerow D, Bauer R, Oberwinkler F. 1997. Phylogenetic studies on nuclear large subunit ribosomal DNA sequences of smut fungi and related taxa. *Canadian Journal of Botany* 75: 2045–2056.
- Begerow D, Göker M, Lutz M, Stoll M. 2004a. On the evolution of smut fungi on their hosts. In: Agerer R, Piepenbring M, Blanz P (eds), *Frontiers in Basidiomycete mycology*: 81–98. IHW-Verlag, Eching, Germany.
- Begerow D, John B, Oberwinkler F. 2004b. Evolutionary relationships among beta-tubulin gene sequences of basidiomycetous fungi. *Mycological Research* 108: 1257–1263.
- Begerow D, Stoll M, Bauer R. 2006. A phylogenetic hypothesis of Ustilaginomycotina based on multiple gene analyses and morphological data. *Mycologia* 98: 906–916.
- Berner DK, Dubin HJ, Smallwood EL. 2007. Slender wheatgrass is susceptible to smut caused by *Ustilago phrygica* from Turkey. *Plant Disease* 91: 906.
- Bouchenak-Khelladi Y, Salamin N, Savolainen V, Forest F, Bank M van der, et al. 2008. Large multi-gene phylogenetic trees of the grasses (*Poaceae*): Progress towards complete tribal and generic level sampling. *Molecular Phylogenetics and Evolution* 47: 488–505.

- Brefeld O. 1912. Die Brandpilze und die Brandkrankheiten. V. Untersuchungen aus dem Gesamtgebiete der Mykologie. XV. Commissions-Verlag von Heinrich Schöningh, Münster.
- Cunnington JH, Shivas RG. 2006. Phylogenetic considerations for predicting the host range of *Ustilago sporoboli-indici*, a potential biological control agent for *Sporobolus* species in Australia. *Plant Protection Quarterly* 2: 95–99.
- Cunnington JH, Vánky K, Shivas RG. 2005. *Lundquistia* is a synonym of *Sporisorium* (Ustilaginomycetes). *Mycologia Balcanica* 2: 95–100.
- Dereeper A, Guignon V, Blanc G, Audic S, Buffet S, et al. 2008. Phylogeny.fr: robust phylogenetic analysis for the non-specialist. *Nucleic Acids Research* 36: W465–W469.
- Edgar RC. 2004. MUSCLE: multiple sequence alignment with high accuracy and high throughput. *Nucleic Acids Research* 32: 1792–1797.
- Fullerton RA, Langdon RFN. 1968. A study of some smuts of *Echinochloa* spp. *Proceedings of the Linnean Society of New South Wales* 93: 281–293.
- Guindon S, Dufayard JF, Lefort V, Anisimova M, Hordijk W, Gascuel O. 2010. New algorithms and methods to estimate maximum-likelihood phylogenies: Assessing the performance of PhyML 3.0. *Systematic Biology* 59: 307–321.
- Hsiao C, Jacobs SWL, Chatterton NJ, Asay KH. 1999. A molecular phylogeny of the grass family (Poaceae) based on the sequences of nuclear ribosomal DNA (ITS). *Australian Systematic Botany* 11: 667–688.
- Huelsenbeck JP, Ronquist F. 2001. MrBayes: Bayesian inference of phylogenetic trees. *Bioinformatics* 17: 754–755.
- Kellogg EA. 2000. The grasses: A case study in macroevolution. *Annual Review of Ecology and Systematics* 31: 217–238.
- Kumar S, Dudley J, Nei M, Tamura K. 2008. MEGA: A biologist-centric software for evolutionary analysis of DNA and protein sequences. *Briefings in Bioinformatics* 9: 299–306.
- Langdon RFN. 1962. A study of some smuts of *Sorghum* spp. *Proceedings of the Linnean Society of New South Wales* 87: 45–50.
- Langdon RFN, Fullerton RA. 1975. Sorus ontogeny and sporogenesis in some smut fungi. *Australian Journal of Botany* 23: 915–930.
- Langdon RFN, Fullerton RA. 1977. *Macalpinomyces*, a new genus of smut fungi. *Transactions of the British Mycological Society* 68: 27–30.
- Langdon RFN, Fullerton RA. 1978. The genus *Sphacelotheca* (Ustilaginales): criteria for its delimitation and the consequences thereof. *Mycotaxon* 6: 421–456.
- Link HF. 1825. *Cryptogamia. Gymnomycetes. Species Plantarum exhibentes Plantas Rite Cognitas ad Genera Relatas*. Linne Ca. 2: 1–128.
- Maddison DR, Maddison WP. 2001. *MacClade 4: analysis of phylogeny and character evolution*. Sinauer Associates, Sunderland.
- Maniatis T, Fritsch EF, Sambrook J. 1982. *Molecular cloning, a laboratory manual*. Cold Spring Harbor Laboratory, Cold Spring Harbor, New York.
- Mooi RD, Gill AC. 2010. Phylogenies without synapomorphies – a crisis in fish systematics: time to show some character. *Zootaxa* 2450: 26–40.
- Munkacsy AB, Stoxen S, May G. 2007. Domestication of maize, sorghum, and sugarcane did not drive the divergence of their smut pathogens. *Evolution* 61: 388–403.
- Nylander JAA, Wilgenbusch JC, Warren DL, Swofford DL. 2008. AWTY (are we there yet?): a system for graphical exploration of MCMC convergence in Bayesian phylogenetics. *Bioinformatics* 24: 581–583.
- Piepenbring M. 2004. Comparative morphology of galls formed by smut fungi and discussion of generic concepts. In: Agerer R, Piepenbring M, Blanz P (eds), *Frontiers in Basidiomycote mycology*: 117–164. IHW-Verlag, Eching, Germany.
- Piepenbring M, Bauer R, Oberwinkler F. 1998. Teliospores of smut fungi – Teliospore connections, appendages, and germ pores studied by electron microscopy; phylogenetic discussion of characteristics of teliospores. *Protoplasma* 204: 202–218.
- Piepenbring M, Stoll M, Oberwinkler F. 2002. The generic position of *Ustilago maydis*, *Ustilago scitaminea*, and *Ustilago esculenta* (Ustilaginales). *Mycological Progress* 1: 71–80.
- Ronquist F, Huelsenbeck JP. 2003. MrBayes 3: Bayesian phylogenetic inference under mixed models. *Bioinformatics* 19: 1572–1574.
- Shivas RG, Cunnington JH, Vánky K. 2004. Two new species of Ustilaginomycetes on *Chrysopogon fallax* from Australia. *Fungal Diversity*, 16: 147–156.
- Stamatakis A. 2006. RAxML-VI-HPC: Maximum likelihood-based phylogenetic analyses with thousands of taxa and mixed models. *Bioinformatics* 22: 2688–2690.
- Stevens PF. 2001. "Angiosperm Phylogeny Website. Version 9, June 2008." Retrieved 18th September 2010, from <http://www.mobot.org/MOBOT/research/APweb/>.
- Stoll M, Begerow D, Oberwinkler F. 2005. Molecular phylogeny of *Ustilago*, *Sporisorium*, and related taxa based on combined analyses of rDNA sequences. *Mycological Research* 109: 342–356.
- Stoll M, Piepenbring M, Begerow D, Oberwinkler F. 2003. Molecular phylogeny of *Ustilago* and *Sporisorium* species (Basidiomycota, Ustilaginales) based on internal transcribed spacer (ITS) sequences. *Canadian Journal of Botany* 81: 976–984.
- Swann EC, Taylor JW. 1995. Phylogenetic perspectives on Basidiomycete systematics – evidence from the 18S ribosomal-RNA gene. *Canadian Journal of Botany* 73: S862–S868.
- Talavera G, Castresana J. 2007. Improvement of phylogenies after removing divergent and ambiguously aligned blocks from protein sequence alignments. *Systematic Biology* 56: 564–577.
- Vánky K. 1991. Spore morphology in the taxonomy of Ustilaginales. *Transactions of the Mycological Society of Japan* 32: 381–400.
- Vánky K. 1994. *European smut fungi*. Fischer Verlag, Stuttgart, Germany.
- Vánky K. 1995a. Taxonomical studies on Ustilaginales. XII. *Mycotaxon* 54: 215–238.
- Vánky K. 1995b. Taxonomical studies on Ustilaginales. XIII. *Mycotaxon* 56: 197–216.
- Vánky K. 1996. The genus *Macalpinomyces* (Ustilaginales). *Mycotaxon* 59: 115–126.
- Vánky K. 1997. Taxonomical studies on Ustilaginales. XVII. *Mycotaxon* 65: 159–182.
- Vánky K. 2001. *Lundquistia*, a new genus of Ustilaginomycetes. *Mycotaxon* 77: 371–374.
- Vánky K. 2002. *Illustrated genera of smut fungi*. APS Press, St. Paul, Minnesota, USA.
- Vánky K. 2004. New smut fungi (Ustilaginomycetes) from Mexico, and the genus *Lundquistia*. *Fungal Diversity* 17: 159–190.
- Vánky K. 2012. *Smut fungi of the world*. APS Press, St. Paul, Minnesota.
- Vánky K, Lutz M. 2011. *Tubisorus*, a new genus of smut fungi (Ustilaginomycetes) for *Sporisorium pachycarpum*. *Mycologia Balcanica* 8: 129–135.
- Vánky K, Lutz M, Shivas RG. 2006. *Anomalomyces panici*, new genus and species of Ustilaginomycetes from Australia. *Mycologia Balcanica* 3: 119–126.
- Vánky K, Shivas RG. 2001. Smut fungi (Ustilaginomycetes) of *Sorghum* (Gramineae) with special regard to Australasia. *Mycotaxon* 80: 339–353.
- Vánky K, Shivas RG. 2008. *Fungi of Australia: The smut fungi*. ABRS, Canberra & CSIRO Publishing, Melbourne, Australia.
- Vilgalys R, Hester M. 1990. Rapid genetic identification and mapping of enzymatically amplified ribosomal DNA from several *Cryptococcus* species. *Journal of Bacteriology* 172: 4238–4246.
- White TJ, Bruns TD, Lee S, Taylor JW. 1990. Amplification and direct sequencing of fungal ribosomal RNA genes for phylogenetics. In: Innis MA, Gelfand DH, Sninsky JJ, White TJ (eds), *PCR Protocols: A guide to methods and applications*: 315–322. Academic Press, Inc., San Diego.