

RESEARCH

Open Access

Brain–blood amino acid correlates following protein restriction in murine maple syrup urine disease

Kara R Vogel¹, Erland Arning², Brandi L Wasek², Sterling McPherson³, Teodoro Bottiglieri² and K Michael Gibson^{1*}

Abstract

Background: Conventional therapy for patients with maple syrup urine disease (MSUD) entails restriction of protein intake to maintain acceptable levels of the branched chain amino acid, leucine (LEU), monitored in blood. However, no data exists on the correlation between brain and blood LEU with protein restriction, and whether correction in blood is reflected in brain.

Methods: To address this question, we fed intermediate MSUD mice diets of 19% (standard) and 6% protein, with collection of sera (SE), striata (STR), cerebellum (CE) and cortex (CTX) for quantitative amino acid analyses.

Results: LEU and valine (VAL) levels in all brain regions improved on average 28% when shifting from 19% to 6% protein, whereas the same improvements in SE were on average 60%. Isoleucine (ILE) in brain regions did not improve, while the SE level improved 24% with low-protein consumption. Blood-branched chain amino acids (LEU, ILE, and VAL in sera (SE)) were 362–434 μM , consistent with human values considered within control. Nonetheless, numerous amino acids in brain regions remained abnormal despite protein restriction, including glutamine (GLN), aspartate (ASP), glutamate (GLU), gamma-aminobutyric acid (GABA), asparagine (ASN), citrulline (CIT) and serine (SER). To assess the specificity of these anomalies, we piloted preliminary studies in hyperphenylalaninemic mice, modeling another large neutral aminoacidopathy. Employing an identical dietary regimen, we found remarkably consistent abnormalities in GLN, ASP, and GLU.

Conclusions: Our results suggest that blood amino acid analysis may be a poor surrogate for assessing the outcomes of protein restriction in the large neutral amino acidopathies, and further indicate that chronic neurotransmitter disruptions (GLU, GABA, ASP) may contribute to long-term neurocognitive dysfunction in these disorders.

Keywords: Maple syrup urine disease (MSUD), Branched-chain keto-acid dehydrogenase (BCKDH) complex, Mouse model, Large neutral amino acid transporter (LAT-1), Branched-chain amino acids (BCAAs), Phenylketonuria (PKU), Large neutral aminoacidopathies, Dietary protein restriction

Background

Maple syrup urine disease (MSUD; branched chain ketoacid dehydrogenase (BCKDH) deficiency) and phenylketonuria (PKU) comprise the large neutral aminoacidopathies. Untreated MSUD results in accumulation of the branched-chain amino acids (BCAAs) leucine (LEU), valine (VAL) and isoleucine (ILE) [1–4]. Additionally, induction of

catabolism will induce release of BCAAs from muscle and increase the BCAA's corresponding α -keto acids (BCKAs), including α -ketoisocaproate (KIC, from LEU), α -keto- β -methylvalerate (KMV, from ILE) and α -ketoisovalerate (KIV, from VAL), all of which can freely traverse the blood–brain barrier (BBB) and transaminate to yield the corresponding BCAAs [5]. Treatment of MSUD requires strict protein restriction combined with BCAA supplementation to levels compatible with adequate development and growth. Although dietary intervention prevents the severe developmental delays associated

* Correspondence: mike.gibson@wsu.edu

¹Experimental and Systems Pharmacology, College of Pharmacy, Washington State University, 412 E. Spokane Falls Blvd., Pharmaceutical and Biomedical Sciences Building, Room 347, P.O. Box 1495, 99210-1495 Spokane, WA, USA
Full list of author information is available at the end of the article

with chronic hyperleucinemia, it nonetheless presents challenges that include maintenance and adherence to diet, and mounting evidence for long-term deficits in neurocognition despite acceptable metabolic control determined in blood [6-16]. Additionally, over restriction of dietary amino acid intake may have untoward consequences. The preceding discussion suggests that while prudent, dietary treatment alone for MSUD may be suboptimal.

The pathophysiology of MSUD has been extensively reviewed [17]. Episodic increases in blood BCAAs occur when muscle degrades protein in response to physiological stress [18-20], also increasing the level of corresponding BCKAs. Increased muscle BCKAs induces reversal of cytosolic transaminases and depletes tissue levels of other amino acid nitrogen donors. As LEU exits muscle and other tissues via the large neutral amino acid transporter (LAT-2) [21], heteroexchange mechanisms stoichiometrically drive import of other amino acids and increase the relative LEU blood concentration. At the BBB, elevated BCAAs may saturate the LAT-1 (see below) transporter and block uptake of other large neutral amino acids (LNAA; including phenylalanine (PHE), tyrosine (TYR), methionine (MET); tryptophan (TRP); and histidine (HIS)). Increased blood BCKAs enter the brain via the monocarboxylate transporter (MCT) and reverse flux through cerebral transaminases, depleting brain glutamate (GLU), glutamine (GLN) and gamma-aminobutyric acid (GABA) (among others), while enhancing production of LEU and α -ketoglutarate [5,22-25]. These disruptions in brain amino acid homeostasis may also be accompanied by disruptions of oxidative phosphorylation, elevated cerebral lactate level and oxidative damage [20,26].

As noted above, LNAAs cross the BBB on the LAT-1 transporter, and accumulation of offending amino acids such as the BCAAs in MSUD can result in exclusion of other LNAAs from the brain, although this has not been rigorously evaluated in either patients or an animal model of MSUD. Despite the specificity of the LAT-1 for LNAAs, most brain amino acid transport systems display broad overlap in the amino acids transported [3,4,27,28]. Here, we have employed a murine model of MSUD to address the question of whether control of BCAA level, as monitored in blood, is reflected by similar correction in the brain. Several novel therapeutic approaches to PKU have emerged recently [29], yet with the exceptions of phenylbutyrate administration (which selectively lowers circulating BCAAs) [30] or orthotopic liver transplantation for the most severe forms of MSUD [8,15,31,32], few therapeutic advances have emerged in MSUD. The current report addresses our hypothesis, and for the first time verifies in a murine model of MSUD that assessment of metabolic control using blood studies is a poor surrogate for disturbances of amino acid homeostasis in the brain.

Methods

Animal subjects

The intermediate MSUD murine model (*imsud* mice) has been described, and manifests ~6% of residual BCKDH enzyme function [1,2,33,34]. Animal subjects were genotyped by PCR amplification. Subjects of both genders were employed, ages 10–20 days of life. Subjects were allowed ad libitum access to chow and water throughout experimentation. All animal experimentation was performed with IACUC approval (ASAF 4232–007).

Diets employed

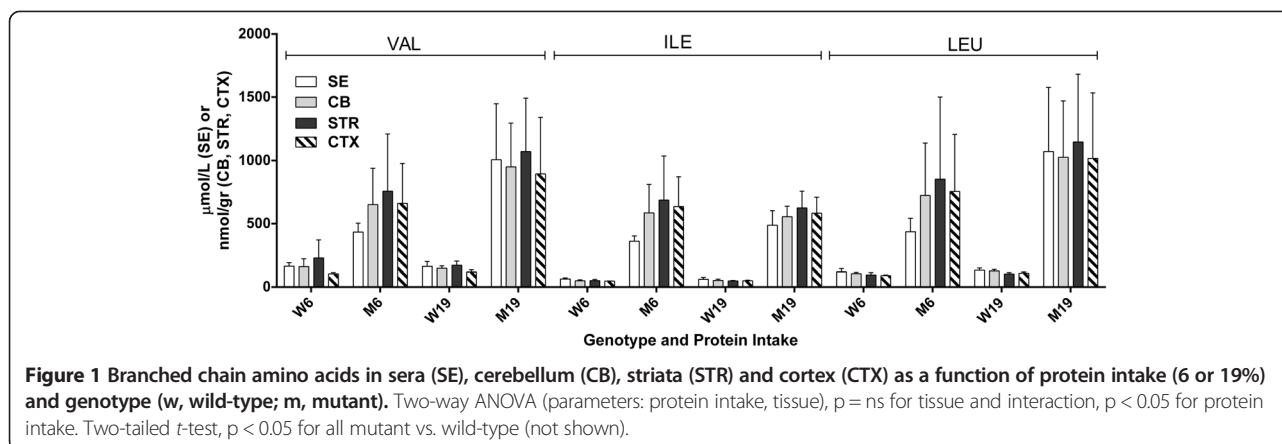
We performed pilot studies with the Teklad TD.90016 diet (6.9% casein = 6% protein; low protein) since it has been employed previously for maternal protein restriction in rodents [35]. In the latter studies, the induction of serine-metabolizing enzymes was characterized in mice receiving 2, 6 and 18% protein. Based upon empiric considerations, we felt that 2% protein would be too stringent in *imsud* mice and lead to catabolic crisis. Teklad custom diets are isocaloric and balanced for nitrogen level. The corresponding Teklad TD.91353 diet (19% protein) was used as control diet. Animals were on diet for 8–18 days prior to sacrifice. Power analyses indicated that $n = 6$ subjects of each genotype (*imsud*^{+/+} and *imsud*^{-/-}) would be sufficient to obtain statistically significant outcomes. For brain region analyses (see below), we frequently had $n = 5$ – 6 subjects per diet and genotype, but the smaller size of mutant subjects often led to insufficient blood for analytical studies, thereby leading to smaller n values for sera (SE) and enhanced data variability. At study conclusion, subjects per genotype were $n = 3$ – 7 for SE and $n = 4$ – 8 for brain.

Tissue harvesting and analytical methodology

At appropriate time points, animal subjects were euthanized, and blood collected by cardiac puncture. The brain cavity was rapidly accessed on an ice-cold glass plate, with parietal cortex (CTX), striata (STR), and cerebellum (CB) rapidly excised. Harvested tissues and sera following centrifugation were stored at -80°C until analyses. LNAAs and other amino acids were determined with an ultraperformance liquid chromatography (UPLC) MassTrak amino acid system as previously described [36]. All values in SE are presented in units of $\mu\text{mol/L}$, whereas all values in brain regions are presented in units of nmol/gr tissue.

Statistical analyses

In prior studies, we had observed depletion of GLU, GLN, ASP, serine (SER), alanine (ALA) and GABA, with elevated glycine (GLY) in brain of *imsud* mice. However, those studies were performed in whole brain [1,2,33,34], potentially leading to artifact from mixing of regions with high vs. low metabolite levels. In the current study



we assessed discrete brain regions. Accordingly, we had no insight whether to expect brain regional amino acids to be constant or different. Thus, we initially employed a two-way ANOVA to assess correlations between brain region and protein intake, and interaction of these parameters, accompanied by a Holm-Sidak's multiple comparisons test. Our primary statistical analyses employed a two-tailed t test within genotype as a function of protein consumption. Both statistical evaluations are presented in all figure legends. Comparisons of amino acid concentrations between blood and brain assumed a density of brain tissue of ~ 1 g/ml [37].

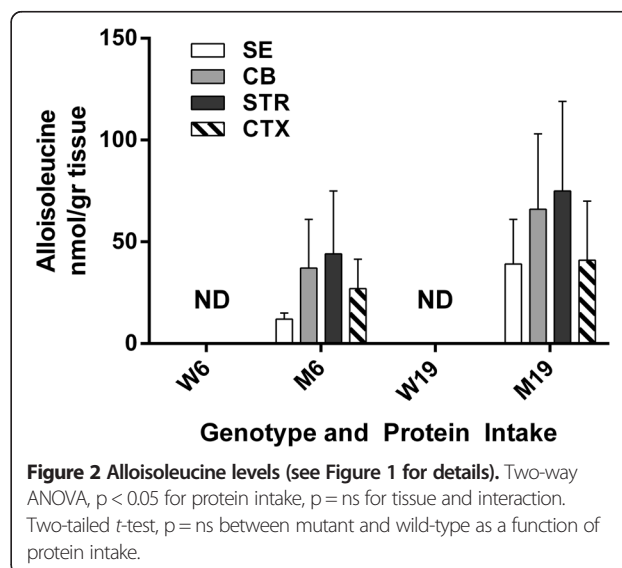
Results

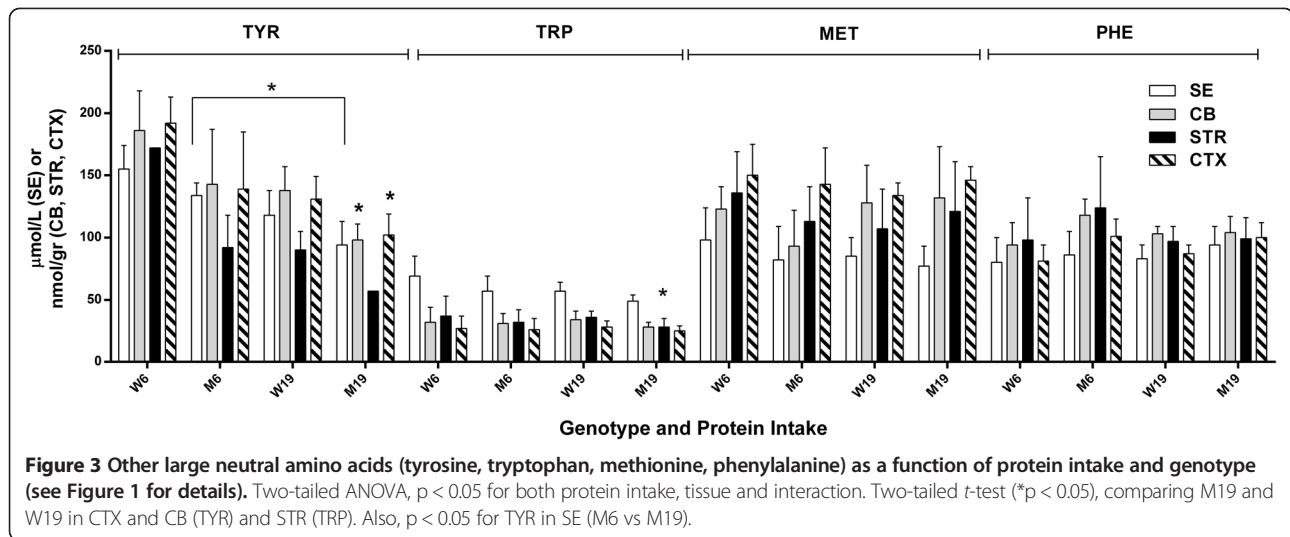
For *imsud* mice, all BCAAs were significantly increased in comparison to littermate controls, verifying the utility of the model (Figure 1). With decreased protein consumption, LEU in mutant SE decreased from 1072 (504) (standard deviation shown in parenthesis after mean) to 436 (107) $\mu\text{mol/L}$, while the same decreases in mutant were 1026 (444) to 723 (415) in CB, 1147 (535) to 853 (648) in STR and 1017 (516) to 755 (452) in CTX (brain regions: nmol/gr tissue). ILE changes in mutant mice with decreased protein were 488 (115) to 362 (41) $\mu\text{mol/L}$ in SE, 555 (84) to 585 (226) in CB, 625 (132) to 687 (349) in SE and 583 (126) to 636 (235) in cortex (nmol/gr tissue). For VAL, comparable changes were 1007 (441) to 434 (71) $\mu\text{mol/L}$ in SE, 950 (347) to 651 (288) in CB, 1071 (421) to 758 (453) in STR and 894 (448) to 661 (351) in CTX (nmol/gr tissue).

Within tissues (SE, CB, STR and CTX), there was no significant improvement in BCAAs with lowered protein intake, although the trend in SE BCAAs approached significance (t -test, 2-tailed, $p = 0.074$ - 0.125 vs. CB, STR and CTX, $p = 0.210$ - 0.789), but variation in SDs (occasional low SE quantity for selected animals) was problematic. Alloisoleucine (ALLO, a pathognomonic biomarker for MSUD) showed similar trends (Figure 2). The changes for

ALLO in mutants with decreased protein consumption were 39 (22) to 12 (3) $\mu\text{mol/L}$ in SE, 66 (37) to 37 (24) in CB, 75 (44) to 44 (31) in STR, and 41 (29) to 27 (15) in CTX (brain values, nmol/gr protein). As expected, ALLO was undetectable in wild-type mice with either diet. There was no significant difference in any tissue with decreased protein intake for ALLO in mutant mice.

We then turned our attention to the other LNAAs (MET, PHE, TYR and TRP) in the same regions (Figure 3). For TYR, changes for mutant mice with decreased protein intake were 94 (19) to 134 (10) $\mu\text{mol/L}$ in SE, 98 (13) to 143 (44) in CB, 57 ($n = 2$)-92 (26) in striata and 102 (17) to 139 (46) in CTX (brain, nmol/gr tissue). For TRP, the same values for mutant were 49 (5) to 57 (12) $\mu\text{mol/L}$ in SE, 28 (4) to 31 (8) in CB, 28 (7) to 32 (10) in STR and 25 (4) to 26 (9) in CTX. For MET, these values were 77 (16) to 82 (27) $\mu\text{mol/L}$ in SE, 132 (41) to 93 (29) in CB, 121 (40) to 113 (28) in STR and 146 (11) to 143





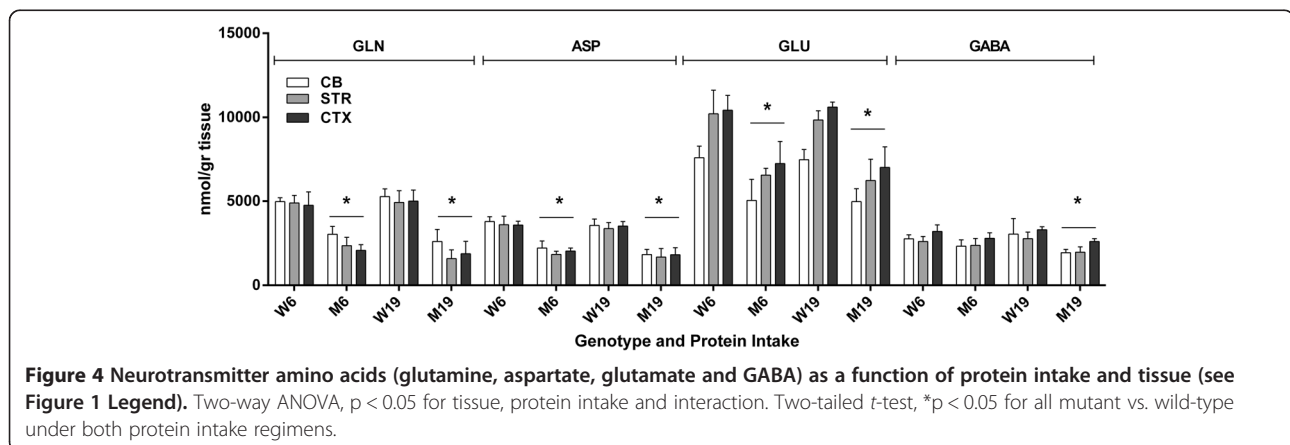
(29) in CTX. For PHE, the corresponding values were 94 (15) to 86 (19) $\mu\text{mol/L}$ in SE, 104 (13) to 118 (13) in CB, 99 (17) to 124 (41) in STR and 100 (12) to 101 (14) in CTX (nmol/gr tissue).

Elevated BCAA levels had no substantial effect on TRP, MET and PHE levels in any brain region, although SE TYR was improved (increased in mutant mice; Figure 3) with decreased protein consumption (without a corresponding correction in brain regions). This finding lends credence to the hypothesis that correction of blood amino acid content may not reflect corresponding corrections in brain. Conversely, compared to control mice receiving identical diet, levels of TYR or TRP were depleted in CB, STR and CTX with high protein intake, but these depletions were not consistent across different brain regions (Figure 3).

We next surveyed all remaining physiological amino acids across brain regions, and observed significant abnormalities in GLN, ASP, GLU, GABA, ASN (asparagine); CIT (citrulline), SER and ALA (Figures 4, 5 and 6). For comparison purposes, concentrations for GLN, ASP and

GLU are not depicted for SE because of the much higher brain levels, which would graphically dwarf SE values, and GABA is not quantifiable in SE. Changes in GLN in mutant brain regions with decreased protein consumption were 2590 (726) to 3021 (477) in CB, 1575 (516) to 2342 (503) in STR and 1862 (739) to 2064 (336) in CTX (nmol/gr tissue). For ASP, the same changes with decreased protein were 1818 (303) to 2206 (420) in CB, 1662 (517) to 1829 (183) in STR and 1808 (420) to 2021 (187) in CTX; for GLU, 4973 (774) to 5045 (1263) in CB, 6238 (1264) to 6554 (407) in STR and 7019 (1226) to 7246 (134) in CTX; and for GABA, 1920 (207) to 2317 (378) in CB, 1958 (316) to 2364 (409) in STR and 2595 (171) to 2789 (329) in CTX (nmol/gr tissue).

With the exception of GABA (which improved with lower protein intake), GLN, ASP and GLU were not improved with lowered protein consumption (Figure 4). Conversely, lowered protein intake normalized the level of ASN in CB and the concentration of CIT in STR and CTX, while both amino acids were significantly increased



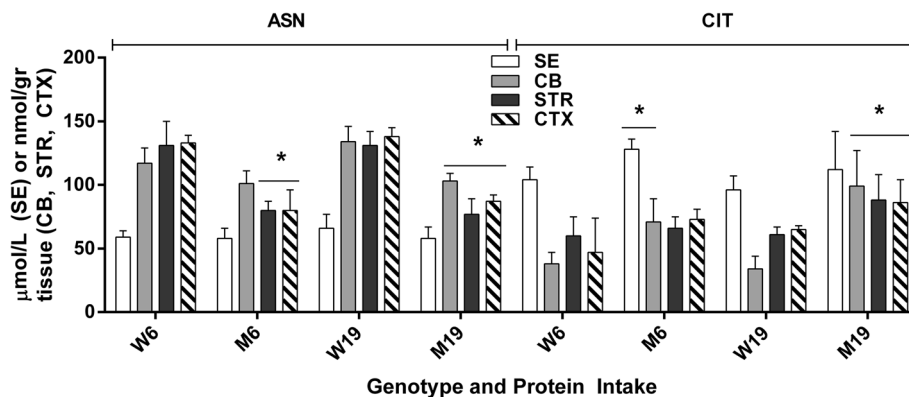


Figure 5 Asparagine and citrulline level as a function of protein intake and tissue. Two-way ANOVA, $p < 0.05$ for protein intake and interaction, $p = ns$ for tissue. Two-tailed t -test, $*p < 0.05$ between genotype with identical protein intake.

vs. control during high-protein intake (Figure 5). Similar findings were observed for SER and ALA, in which correction with lowered protein consumption was observed in CB, but not in STR or CTX (Figure 6). Threonine (THR) is often considered a member of the LNAA subgroup, but we found no consistent changes in brain regions, with the exception of a single instance in striata (Figure 7). Conversely, LYS is not considered a LNAA, yet its values were significantly impacted during high-protein consumption (Figure 7).

Since concentrations of several amino acids are much lower in SE vs. brain regions (e.g., Figures 1, 2, and 3), we did not present them graphically, as noted above. We observed no significant changes for GLU and GLN in SE ($p > 0.05$), yet found brain disruptions that were uncorrected with lowered protein intake (Figure 4). Conversely, in SE we observed a significant difference for ASP (19% diet: *imsud*^{-/-}, 59 ± 17 ($n = 5$) vs. *imsud*^{+/+}, 104 ± 21 ($n = 7$) ($p < 0.05$), which corrected with 6% diet (*imsud*^{-/-}, 78 ± 37 ($n = 3$) vs. *imsud*^{+/+}, 136 ± 90 ($n = 5$) ($p = ns$). ASN in SE was within normal limits for *imsud* subjects, despite significant alterations in brain. For CIT, elevations in SE approximated those seen in brain regions

(data not shown). SER levels in SE were not abnormal in mutant mice (although they were disrupted in brain regions; Figure 6). Conversely, disruptions of ALA levels in SE mirrored the abnormalities observed in brain (data not shown). Of interest, abnormalities of LYS in SE mirrored the disruptions observed in brain (Figure 7), especially in the instance of high-protein intake, perhaps suggesting that some portion of LYS is trafficked on the large-neutral amino acid transporter.

Depletion of brain GLN, GLU and GABA have been suggested to associate with transamination via accumulated KIC in brain [5]. Accordingly, we predicted that *Pah*^{enu2} mice (representing the large neutral aminoacidopathy PKU [3,4]) would have normal GLN, GLU and GABA since KIC is not elevated in this disorder. To address this hypothesis, we developed cohorts of *Pah*^{enu2-/-} mice and parallel controls and fed them diets identical to those given to *imsud* mice. We first verified the utility of our PKU model through quantitation of brain PHE levels, which was significantly increased (and not corrected even with 6% protein intake; Figure 8). Unexpectedly, alterations in brain regions for ASP, GLN and GLU in *Pah*^{enu2-/-} mirrored those observed in

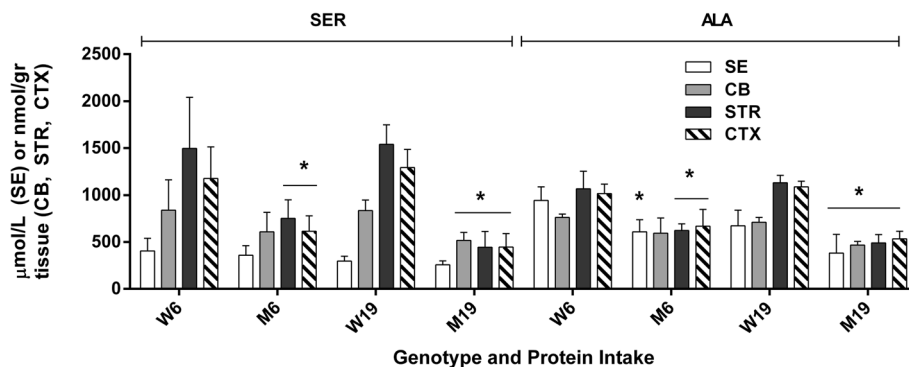
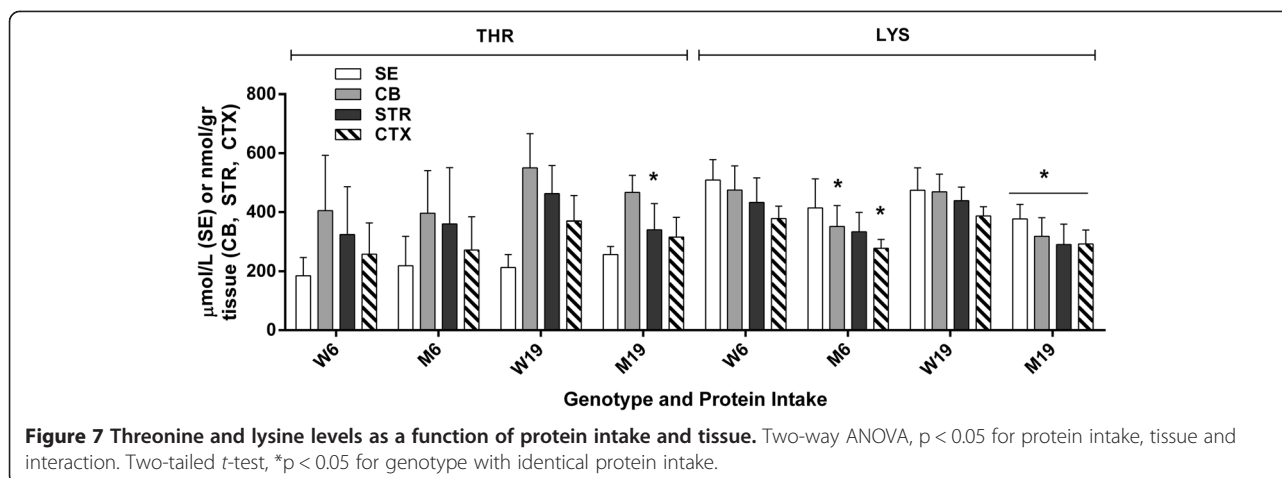


Figure 6 Serine and alanine levels as a function of protein intake and tissue. Two-way ANOVA, $p < 0.05$ for protein intake, tissue and interaction. Two-tailed t -test, $*p < 0.05$ for genotype with identical protein intake.



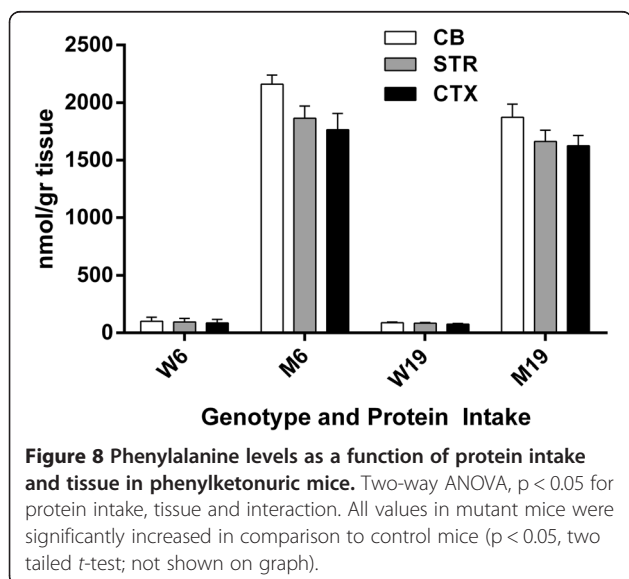
imsud mice (Figure 9). These changes in *Pah^{enu2-/-}* mice with decreased protein intake were: GLN: 3675 (381) to 4500 (258) in CB, 1964 (261) to 2308 (208) in STR and 1557 (280) to 1876 (297) in CTX (nmol/gr tissue); ASP: 2468 (443) to 2335 (98) in CB, 1758 (293) to 1661 (109) in STR and 2216 (456) to 2044 (306) in CTX; CLU: 6781 (559) to 6833 (320) in CB, 6041 (461) to 5777 (363) in STR and 6427 (810) to 6164 (637) in CTX; GABA: 2152 (279) to 2470 (283) in CB, 1735 (264) to 1470 (168) in STR and 2304 (233) to 2271 (308) in CTX (all nmol/gr tissue). The striking similarity in abnormalities between *imsud^{-/-}* and *Pah^{enu2-/-}* mice in different regions of the brain, as a function of protein intake (Figure 9), suggests that other factors, in addition to brain keto-acid accumulation, may be at play in the brains of animals with large neutral aminoacidopathies, and most likely in patients as well.

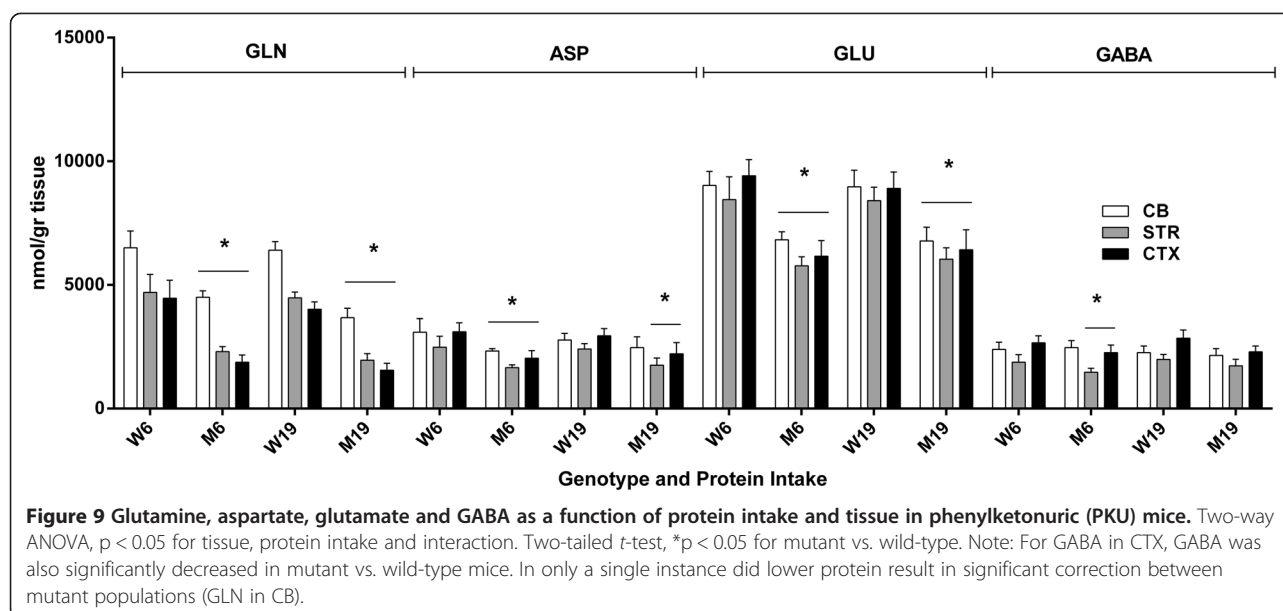
Discussion

The range of means for BCAAs in SE of *imsud* mice receiving 6% dietary protein was 362-434 μ M (Figure 1), consistent with the range of LEU for 13 intermediate MSUD patients under dietary intervention ($379 \pm 147 \mu$ M; [38]) and $282 \pm 277 \mu$ M for classical MSUD patients [5] considered to be under “metabolic control”. Based on these human data, 6% protein consumption normalized blood BCAAs, yet we observed significant disruption of several other amino acids in the brain despite apparent metabolic control manifested in SE. We hypothesized that reduced levels of GLN, GLU, GABA and ALA in brain regions might be partially explained by KIC accumulation ([5]; see Figures 4 and 6; not measured in the current study), yet similar anomalies in PKU mice argues against this hypothesis (Figure 9). CIT accumulation in *imsud* brain regions likely reflects depletion of ASP, the latter necessary for condensation with CIT to form argininosuccinate within the urea cycle.

The original studies of Pardridge and Oldendorf [39] in the rat indicated that PHE, TRP, MET, TYR, LEU, ILE, VAL and HIS were transported into the brain on the LAT-1, with K_m values ranging from ~ 25 to 200μ M (highest affinity, PHE; lowest affinity HIS). Limited data suggests that THR and LYS may also traffic on LAT-1 [3,4,40,41], yet we found no evidence for disrupted THR levels. Conversely, we did detect decreased LYS in brain regions of *imsud* subjects. LYS would be expected to be transported predominantly via the B transporter [3], although there is considerable redundancy in many of the blood-brain transporters.

Long-term neurocognitive deficits are observed in MSUD, even with acceptable metabolic control (as determined in blood), and both animal and human data suggests that these deficits correlate with exclusion of the monoamine precursors TYR and TRP from the brain due to chronic elevations of BCAAs [1,2,25,33,34]. While our studies revealed significant effects on brain TYR with diet





in *imsud* subjects, we found no consistent effect on TRP (although we did not quantify monoamine neurotransmitters). Alternatively, our data supports the premise that long-term neurocognitive deficits in MSUD patients may also correlate with depletion of amino acid neurotransmitters (ASP, GLU and GABA). Based upon the preliminary studies in the current report, our next objectives are to investigate LEU-depleted diets in *imsud*^{-/-} mice that are appropriately supplemented with ILE and VAL, a diet corresponding to that used in MSUD patients, and to again investigate the amino acid outcomes both regionally in brain and blood. Such studies will yield a better overview of the expected outcomes for a diet more closely resembling that utilized in the clinic. The main conclusions drawn from the current report include:

- The first detailed cross-correlation assessment of amino acids in brain and blood, as a function of total protein intake, and the first analysis of amino acids in discrete regions of the brain of *imsud* mice, including cerebellum, cortex and striata
- A clear demonstration that blood amino acid analysis, and the assignment of metabolic control with respect to BCAA levels, represents only a partial picture of brain amino acid homeostasis

These results further support the concept that dietary intervention in MSUD is likely to be insufficient to avoid neurocognitive deficiencies in patients, underscoring the urgent need for more focused therapeutics in MSUD.

Abbreviations

SE: Sera; CB: Cerebellum; STR: Striatum; CTX: cortex; W6: Wild-type mice receiving 6% protein intake; M6: Mutant mice receiving 6% protein intake; W19: Wild-type mice receiving 19% protein intake; M19: Mutant mice

receiving 19% protein intake; *imsud*^{-/-}: Intermediate maple syrup urine disease mice; *Pah*^{enu2-/-}: Phenylketonuric mice; LEU: Leucine; ILE: Isoleucine; VAL: Valine; ALLO: Allosisoleucine; SER: Serine; CIT: Citrulline; THR: Threonine; ALA: Alanine; LYS: Lysine; HIS: Histidine; GLN: Glutamine; ASP: Aspartate; GLU: Glutamate; GABA: 4-aminobutyrate; PHE: Phenylalanine; TYR: Tyrosine; MET: Methionine; TRP: Tryptophan; ASN: Asparagine.

Competing interests

The authors declare that they have no competing interests.

Authors' contributions

KRV performed all animal studies, including breeding and dietary intervention, dissection, and assisted with development of the manuscript; EA, BW and TB performed all analytical studies and assisted in drafting the manuscript; SM performed all data analysis, including data evaluation, statistical modeling, and assisted in drafting the manuscript; KMG designed the study, evaluated amino acid data, derived the hypothesis for testing and developed the first draft of the manuscript. All authors read and approved the final manuscript.

Acknowledgements

KRV and KMG gratefully acknowledge partial support from NIH HD58553, NS82286, the National PKU Alliance, and a Pre-Doctoral Award from the American Foundation for Pharmaceutical Education (AFPE).

Author details

¹Experimental and Systems Pharmacology, College of Pharmacy, Washington State University, 412 E. Spokane Falls Blvd., Pharmaceutical and Biomedical Sciences Building, Room 347, P.O. Box 1495, 99210-1495 Spokane, WA, USA. ²Institute of Metabolic Disease and Baylor Research Institute, Baylor University Medical Center, Dallas, TX, USA. ³College of Nursing, Washington State University, Spokane, WA, USA.

Received: 19 February 2014 Accepted: 25 April 2014

Published: 8 May 2014

References

1. Skvorak KJ, Dorko K, Marongiu F, Tahan V, Hansel MC, Gramignoli R, Arning E, Bottiglieri T, Gibson KM, Strom SC: **Improved amino acid, bioenergetic metabolite and neurotransmitter profiles following human amnion epithelial cell transplant in intermediate maple syrup urine disease mice.** *Mol Genet Metab* 2013, **109**:132–138.
2. Skvorak KJ, Dorko K, Marongiu F, Tahan V, Hansel MC, Gramignoli R, Gibson KM, Strom SC: **Placental stem cell correction of murine intermediate maple syrup urine disease.** *Hepatology* 2013, **57**:1017–1023.

3. Vogel KR, Arning E, Wasek BL, Bottiglieri T, Gibson KM: **Non-physiological amino acid (NPAA) therapy targeting brain phenylalanine reduction: pilot studies in PAHENU2 mice.** *J Inherit Metab Dis* 2013, **36**:513–523.
4. Vogel KR, Arning E, Wasek BL, Bottiglieri T, Gibson KM: **Characterization of 2-(Methylamino)Alkanoic acids capacity to restrict blood–brain Phenylalanine transport in Pahenu2 Mice: preliminary findings.** *Molec Genet Metab* 2013. Aug 15 [Epub ahead of print].
5. Strauss KA, Wardley B, Robinson D, Hendrickson C, Rider NL, Puffenberger EG, Shellmer D, Moser AB, Morton DH: **Classical maple syrup urine disease and brain development: principles of management and formula design.** *Mol Genet Metab* 2010, **99**(4):333–345.
6. le Roux C, Murphy E, Hallam P, Lilburn M, Orlowska D, Lee P: **Neuropsychometric outcome predictors for adults with maple syrup urine disease.** *J Inherit Metab Dis* 2006, **29**:201–202.
7. Muelly ER, Moore GJ, Bunce SC, Mack J, Bigler DC, Morton DH, Strauss KA: **Biochemical correlates of neuropsychiatric illness in maple syrup urine disease.** *J Clin Invest* 2013, **123**:1809–1820.
8. Mazariegos GV, Morton DH, Sindhi R, Soltys K, Nayyar N, Bond G, Shellmer D, Shneider B, Vockley J, Strauss KA: **Liver transplantation for classical maple syrup urine disease: long-term follow-up in 37 patients and comparative United network for organ sharing experience.** *J Pediatr* 2012, **160**(1):116–121.e1.
9. Morton DH, Strauss KA, Robinson DL, Puffenberger EG, Kelley RI: **Diagnosis and treatment of maple syrup disease: a study of 36 patients.** *Pediatrics* 2002, **109**:999–1008.
10. Simon E, Schwarz M, Wendel U: **Social outcome in adults with maple syrup urine disease (MSUD).** *J Inherit Metab Dis* 2007, **30**:264.
11. Schönberger S, Schweiger B, Schwahn B, Schwarz M, Wendel U: **Dysmyelination in the brain of adolescents and young adults with maple syrup urine disease.** *Mol Genet Metab* 2004, **82**:69–75.
12. Klee D, Thimm E, Wittsack HJ, Schubert D, Primke R, Pentang G, Schaper J, Mödder U, Antoch A, Wendel U, Cohnen M: **Structural white matter changes in adolescents and young adults with maple syrup urine disease.** *J Inherit Metab Dis* 2013. Jan 25. [Epub ahead of print].
13. Packman W, Mehta I, Rafie S, Mehta J, Naldi M, Mooney KH: **Young adults with MSUD and their transition to adulthood: psychosocial issues.** *J Genet Couns* 2012, **21**:692–703.
14. Carecchio M, Schneider SA, Chan H, Lachmann R, Lee PJ, Murphy E, Bhatia KP: **Movement disorders in adult surviving patients with maple syrup urine disease.** *Mov Disord* 2011, **26**(7):1324–1328.
15. Shellmer DA, DeVito DA, Dew MA, Noll RB, Feldman H, Strauss KA, Morton DH, Vockley J, Mazariegos GV: **Cognitive and adaptive functioning after liver transplantation for maple syrup urine disease: a case series.** *Pediatr Transplant* 2011, **15**(1):58–64.
16. Walsh KS, Scott MN: **Neurocognitive profile in a case of maple syrup urine disease.** *Clin Neuropsychol* 2010, **24**(4):689–700.
17. Strauss KA, Puffenberger EG, Morton DH: **Maple Syrup Urine Disease.** In *GeneReviews™ [Internet]*. Edited by Pagon RA, Adam MP, Bird TD, Dolan CR, Fong CT, Stephens K. Seattle: University of Washington, Seattle; 2006. Jan 30 [updated 2013 May 09].
18. Bridi R, Braun CA, Zorzi GK, Wannmacher CM, Wajner M, Lissi EG, Dutra-Filho CS: **Alpha-keto acids accumulating in maple syrup urine disease stimulate lipid peroxidation and reduce antioxidant defences in cerebral cortex from young rats.** *Metab Brain Dis* 2005, **20**:155–167.
19. Funchal C, Gottfried C, De Almeida LM, Wajner M, Pessoa-Pureur R: **Evidence that the branched-chain alpha-keto acids accumulating in maple syrup urine disease induce morphological alterations and death in cultured astrocytes from rat cerebral cortex.** *Glia* 2004, **48**:230–240.
20. Barschak AG, Marchesan C, Sitta A, Deon M, Giugliani R, Wajner M, Vargas CR: **Maple syrup urine disease in treated patients: biochemical and oxidative stress profiles.** *Clin Biochem* 2008, **41**:317–324.
21. O’Kane RL, Hawkins RA: **Na⁺–dependent transport of large neutral amino acids occurs at the abluminal membrane of the blood–brain barrier.** *Am J Physiol Endocrinol Metab* 2003, **285**:E1167–E1173.
22. Yudkoff M, Daikhin Y, Nissim I, Horyn O, Luhovyy B, Lazarow A, Nissim I: **Brain amino acid requirements and toxicity: the example of leucine.** *J Nutr* 2005, **135**:1531S–1538S.
23. Yudkoff M: **Brain metabolism of branched-chain amino acids.** *Glia* 1997, **21**:92–98.
24. Dodd PR, Williams SH, Gundlach AL, Harper PA, Healy PJ, Dennis JA, Johnston GA: **Glutamate and gamma-aminobutyric acid neurotransmitter systems in the acute phase of maple syrup urine disease and citrullinemia encephalopathies in newborn calves.** *J Neurochem* 1992, **59**:582–590.
25. Zinnanti WJ, Lazovic J, Griffin K, Skvorak KJ, Paul HS, Homanics GE, Bewley MC, Cheng KC, Lanoue KF, Flanagan JM: **Dual mechanism of brain injury and novel treatment strategy in maple syrup urine disease.** *Brain* 2009, **132**(Pt 4):903–918.
26. Sitta A, Ribas GS, Mescka CP, Barschak AG, Wajner M, Vargas CR: **Neurological damage in MSUD: the role of oxidative stress.** *Cell Mol Neurobiol* 2013. Nov 13. [Epub ahead of print].
27. Choi TB, Pardridge WM: **Phenylalanine transport at the human blood–brain barrier. Studies with isolated human brain capillaries.** *J Biol Chem* 1986, **261**(14):6536–6541.
28. Smith QR, Momma S, Aoyagi M, Rapoport SI: **Kinetics of neutral amino acid transport across the blood–brain barrier.** *J Neurochem* 1987, **49**:1651–1658.
29. Ney DM, Blank RD, Hansen KE: **Advances in the nutritional and pharmacological management of phenylketonuria.** *Curr Opin Clin Nutr Metab Care* 2014, **17**(1):61–68.
30. Brunetti-Pierrri N, Lanpher B, Erez A, Ananieva EA, Islam M, Marini JC, Sun Q, Yu C, Hegde M, Li J, Wynn RM, Chuang DT, Hutson S, Lee B: **Phenylbutyrate therapy for maple syrup urine disease.** *Hum Mol Genet* 2011, **20**(4):631–640.
31. Popescu I, Dima SO: **Domino liver transplantation: how far can we push the paradigm?** *Liver Transpl* 2012, **18**:22–28.
32. Strauss KA, Mazariegos GV, Sindhi R, Squires R, Finegold DN, Vockley G, Robinson DL, Hendrickson C, Virji M, Cropcho L, Puffenberger EG, McGhee W, Seward LM, Morton DH: **Elective liver transplantation for the treatment of classical maple syrup urine disease.** *Am J Transplant* 2006, **6**(3):557–564.
33. Skvorak KJ, Hager EJ, Arning E, Bottiglieri T, Paul HS, Strom SC, Homanics GE, Sun Q, Jansen EE, Jakobs C, Zinnanti WJ, Gibson KM: **Hepatocyte transplantation (HTx) corrects selected neurometabolic abnormalities in murine intermediate maple syrup urine disease (iMSUD).** *Biochim Biophys Acta* 2009, **1792**:1004–1010.
34. Skvorak KJ, Paul HS, Dorko K, Marongiu F, Ellis E, Chace D, Ferguson C, Gibson KM, Homanics GE, Strom SC: **Hepatocyte transplantation improves phenotype and extends survival in a murine model of intermediate maple syrup urine disease.** *Mol Ther* 2009, **17**:1266–1273.
35. Antflück JE, Baker GB, Hampson DR: **The effects of a low protein diet on amino acids and enzymes in the serine synthesis pathway in mice.** *Amino Acids* 2010, **39**:145–153.
36. Narayan SB, Ditewig-Meyers G, Graham KS, Scott R, Bennett MJ: **Measurement of plasma amino acids by Ultraperformance® Liquid Chromatography.** *Clin Chem Lab Med* 2011, **49**:1177–1185.
37. Barber TW, Brockway JA, Higgins LS: **The density of tissues in and about the head.** *Acta Neurol Scand* 1970, **46**:85–92.
38. Hoffmann B, Helbling C, Schadewaldt P, Wendel U: **Impact of longitudinal plasma leucine levels on the intellectual outcome in patients with classic MSUD.** *Pediatr Res* 2006, **59**(1):17–20.
39. Pardridge WM, Oldendorf WH: **Kinetic analysis of blood–brain barrier transport of amino acids.** *Biochim Biophys Acta* 1975, **401**(1):128–136.
40. Tews JK, Kim YW, Harper AE: **Induction of threonine imbalance by dispensable amino acids: relation to competition for amino acid transport into brain.** *J Nutr* 1979, **109**(2):304–315.
41. Tews JK, Kim YW, Harper AE: **Induction of threonine imbalance by dispensable amino acids: relationships between tissue amino acids and diet in rats.** *J Nutr* 1980, **110**(3):394–408.

doi:10.1186/1750-1172-9-73

Cite this article as: Vogel et al: Brain–blood amino acid correlates following protein restriction in murine maple syrup urine disease. *Orphanet Journal of Rare Diseases* 2014 **9**:73.