



Case Report

Compound heterozygous state of β -thalassemia with IVS1-5 (G→C) mutation and Indian deletion-inversion $G\gamma(A\gamma\delta\beta)^0$ -thalassemia in eastern India



Snehadhini Dehury¹, Prasanta Purohit¹, Satyabrata Meher, Kishalaya Das, Siris Patel*

Veer Surendra Sai Medical College, Burla, India

ARTICLE INFO

Article history:

Received 21 October 2014

Accepted 11 December 2014

Available online 12 May 2015

Introduction

It has recently been estimated that each year, more than seven million babies worldwide are born with either a congenital abnormality or a genetic disease.¹ Hemoglobinopathies are the commonest autosomal hereditary disorders and present a major public health problem in India. The overall prevalence of the β -thalassemia trait is 2.78% but this varies from 1.48 to 3.64% in different states of India² compared to the carrier frequency in Brazil (1%).³ Recently we reported that the carrier frequency of the β -thalassemia gene with the IVS1-5 (G→C) mutation in western districts of Odisha, India is 3.75%.^{4,5} In India, the IVS1-5 (G→C) mutation is the most common β -thalassemia mutation. However, the IVS1-5 (G→C) mutation along with other mutations, including IVS1-1 (G→T), Cd41/42 (-TCTT), Cd 8/9 and a 619 base pair deletion, accounts for >90% of mutations causing β -thalassemia. In Brazil, the Cd 39 (C→T) mutation is the most prevalent cause of β -thalassemia

followed by the IVS1-6 (T→C), and IVS1-110 (G→A) mutations.⁶ A map showing zonal distribution of β -thalassemia mutations in India is depicted in Figure 1.

The Veer Surendra Sai Medical College and Hospital, Burla, Odisha is a tertiary care referral hospital catering for western Odisha as well as eastern districts of Chhattisgarh state. Under a comprehensive sickle cell care program, we screen outpatient and hospitalized cases in the Institute for Sickle Cell Disease and other hemoglobinopathies at the Sickle Cell Clinic and Molecular Biology Laboratory.

Compound heterozygotes for β -thalassemia and structural hemoglobin (Hb) variants usually present with a severe form of the disease. Here, we report a case, a compound heterozygote for the β -thalassemia mutation IVS1-5 (G→C) and Indian deletion-inversion $G\gamma(A\gamma\delta\beta)^0$ -thalassemia (HbVar ID-1038) from the district of Bargarh in the state of Odisha, India. The molecular structure of the Indian deletion-inversion [$G\gamma(A\gamma\delta\beta)^0$ -thal] is caused by a major rearrangement

* Corresponding author at: Qr. 3R/27, Doctors Colony, 768017 Burla, Dist. Sambalpur, Odisha, India.

E-mail address: drdilippatel25@gmail.com (S. Patel).

¹ Both authors share first authorship.

<http://dx.doi.org/10.1016/j.bjhh.2014.12.002>

1516-8484/© 2015 Associação Brasileira de Hematologia, Hemoterapia e Terapia Celular. Published by Elsevier Editora Ltda. All rights reserved.

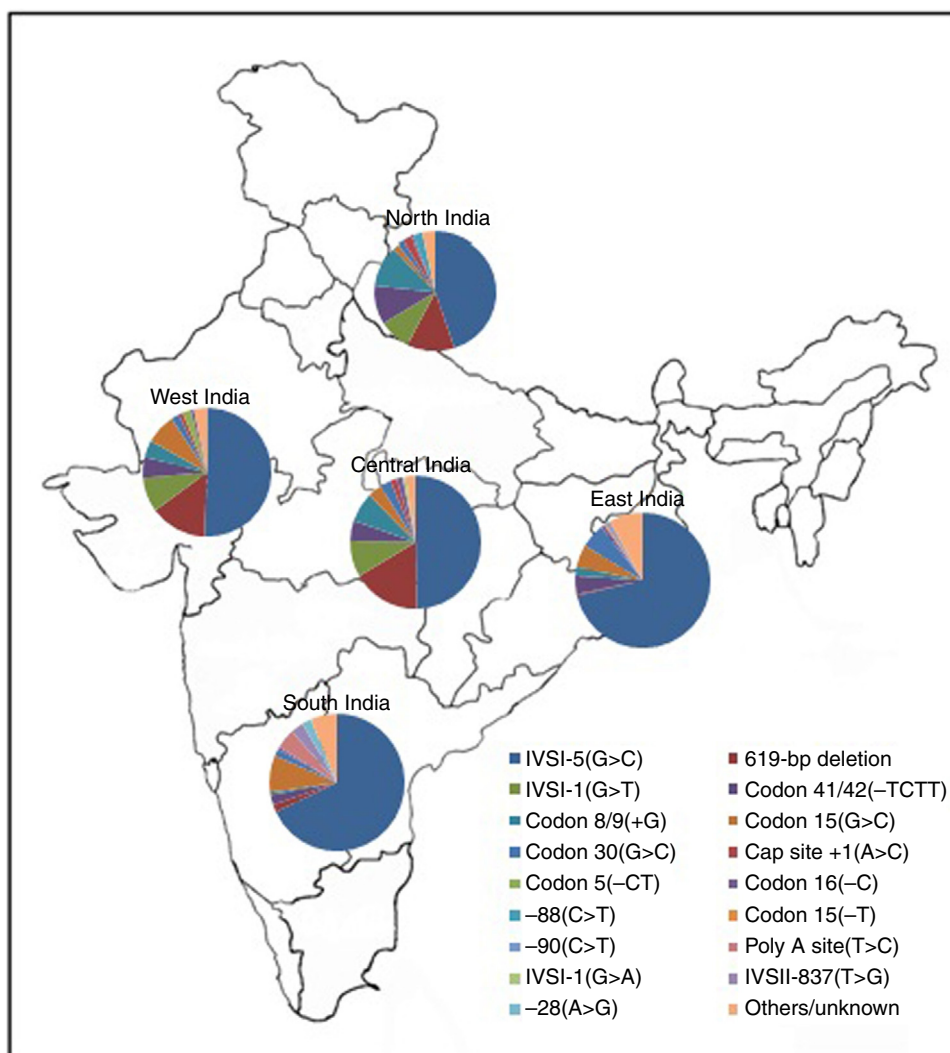


Figure 1 – Map of India depicting the zonal distribution of β -thalassemia mutations.

including an inversion of the sequence between the 3' end of the $A\gamma$ gene and the IVS-II region of the β -globin gene, followed by two deletions (total 8.5 kb) of the flanking DNA sequence. This is the first case report of such a case from eastern India.

Case report

An 18-year-old female patient (height 147 cm and weight 40 kg) belonging to the 'Chasa' caste was admitted to the Department of Medicine of Veer Surendra Sai Medical College and Hospital, Burla, Odisha, India with severe anemia, but with no history of any other medical complaints. Her Hb level was 2 g/dL at the time of admission to the hospital. After a transfusion of three blood units, the Hb level reached 7.8 g/dL. The erythrocyte sedimentation rate was 12 mm/h. Other parameters of blood indices after the blood transfusion were white blood cell count (WBC): 10.9×10^9 cells/L; red blood cells (RBC): $3.35 \times 10^6/\mu\text{L}$; hematocrit (HCT): 23.9%; mean corpuscular volume (MCV): 71.7 fL; mean cell hemoglobin (MCH): 20.6 pg; mean cell hemoglobin concentration (MCHC): 29.0 g/dL; and

platelets (PLT): $149 \times 10^9/\text{L}$. Peripheral blood smear examination showed microcytic, hypochromic anemia, marked anisopoikilocytosis, many microcytes, few macrocytes and fragmented RBCs. Staining by the Kleihauer-Betke method demonstrated pancellular distribution of fetal hemoglobin (Hb F). Ultrasonography examination revealed hepatomegaly (16.5 cm) and splenomegaly (14.5 cm). An X-ray of chest (P-A view) and X-ray of both hip joints (A-P view) showed no abnormalities.

Automated high-performance liquid chromatography using the β -Thalassemia Short Program on Bio-Rad Variant-II system showed various fractions of Hb with a raised level of Hb F (84.6%) and an Hb A_2 concentration of 6.9% (Figure 2). Parents' studies revealed that her mother had a high Hb F level (13%) whereas her father had high Hb A_2 level (5.2%). All hematological parameters of the case and her parents are shown in Table 1. Screening for the common molecular determinants of raised Hb F, the Indian deletion-inversion $G\gamma(A\gamma\delta\beta)^0$ -thalassemia and hereditary persistence of fetal Hb (HPFH) was performed by gap-polymerase chain reaction (PCR) using primers and protocol as described previously.⁷

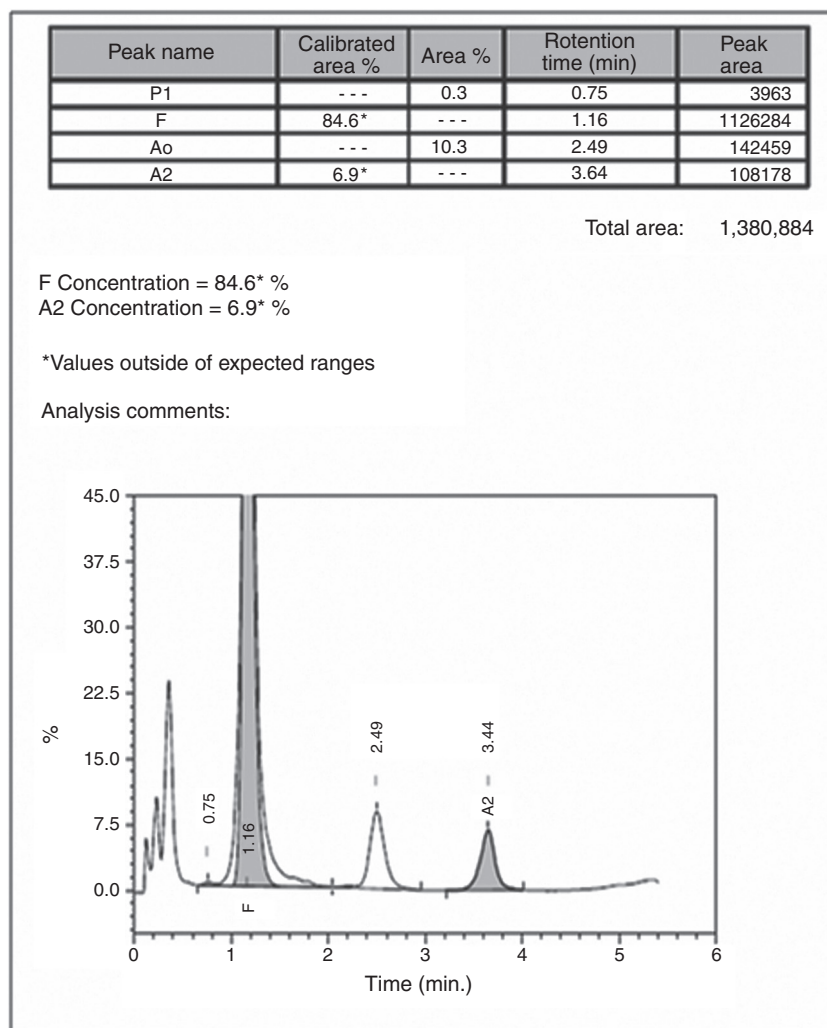


Figure 2 – High performance liquid chromatogram in the case of compound heterozygous state for β -thalassemia with IVS1-5 (G \rightarrow C) mutation and Indian deletion-inversion $G\gamma(A\gamma\delta\beta)^0$ thalassemia (chromatogram one year after hospitalization at follow-up).

Common Indian β -thalassemia mutations were confirmed by multiplex amplification refractory mutation system (ARMS)-PCR using a previously described protocol.⁴ Moreover, alpha globin gene deletions ($\alpha^{-3.7}$ and $\alpha^{-4.2}$) were investigated by gap-PCR.⁸ The DNA study showed father as heterozygous for the IVS1-5(G \rightarrow C) mutation and mother as a $G\gamma(A\gamma\delta\beta)^0$ -thalassemia carrier. The gel picture for Indian deletion-inversion $G\gamma(A\gamma\delta\beta)^0$ -thalassemia is shown in Figure 3. Alpha-thalassemia was not observed in any of them.

Written informed consent was obtained from the patient along with her parents and the study was approved by Institutional Ethics Committee of Veer Surendra Sai Medical College and Hospital, Burla, Odisha, India.

Discussion

β^+ -Thalassemia is the second most common hemoglobinopathy in our clinic's population. We have reported earlier the clinical and molecular characteristics of $G\gamma(A\gamma\delta\beta)^0$ -thalassemia in heterozygous as well as in compound

heterozygous states with Hb S. In Hb S/ $G\gamma(A\gamma\delta\beta)^0$ -thalassemia cases, the patients had repeated painful crises along with histories of blood transfusions.⁹ Indian deletion-inversion $G\gamma(A\gamma\delta\beta)^0$ -thalassemia in the heterozygous form has been reported in western India in the state of Maharashtra.¹⁰ Recently, Pandey et al. described seven cases with Indian deletion-inversion $G\gamma(A\gamma\delta\beta)^0$ -thalassemia, of which three cases were co-inherited with β -thalassemia with the IVS1-5(G \rightarrow C) mutation.¹¹ These three cases had low values of both Hb A₂ (3.2%, 2.8%, and 2.7%) and Hb F (21.3%, 10.7% and 20.3%) compared to the 6.9% and 84.6% of Hb A₂ and Hb F, respectively in the current case. Their three cases were transfusion dependent and showed moderate anemia. Our case is the first case of compound heterozygote state of β -thalassemia with IVS1-5(G \rightarrow C) mutation and $G\gamma(A\gamma\delta\beta)^0$ -thalassemia with mild phenotype from eastern India. In this patient, there was no other probable cause to explain the acute episode of anemia in history or investigations. As parvovirus B19 is not investigated in our institution, this may well be a cause of the anemia in this patient. The milder clinical presentation is likely due to the association of a milder β^+ -thalassemia allele with high

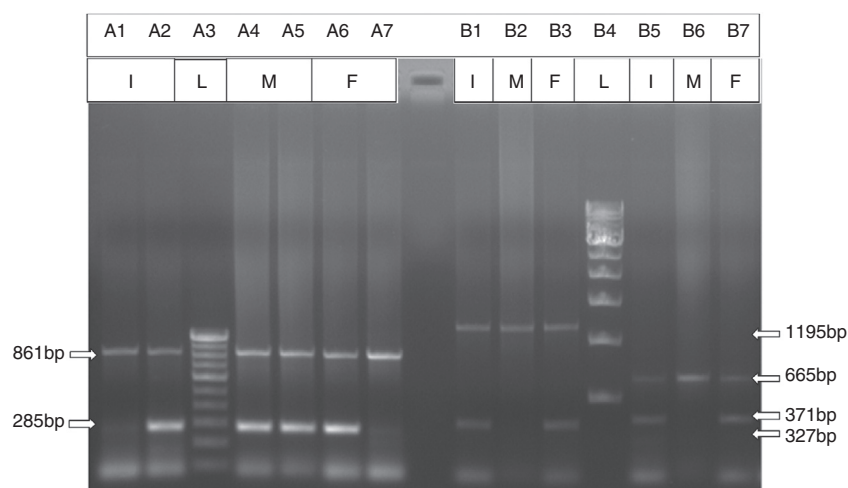


Figure 3 – Agarose gel electrophoresis for the detection of β -thalassemia with IVS1-5 (G→C) mutation (ARMS PCR) and Indian deletion-inversion $G\gamma(A\gamma\delta\beta)^0$ thalassemia (GAP-PCR). *I: index; M: mother; F: father; L: ladder. Detection of β -thalassemia with IVS1-5 (G→C) mutation by ARMS PCR (Line A1, Line A4 and Line A6 for normal β -globin gene, and Line A2, Line A5 and Line A7 for IVS1-5 [G→C] mutation). Detection of Indian deletion-inversion $G\gamma(A\gamma\delta\beta)^0$ thalassemia by GAP-PCR (Line B1, Line B2 and Line B3 for Breakpoint-A, and Line B4, Line B5 and Line B6 for Breakpoint-B).

Hb F level (84.6%). Our observation of homogeneous F cell distribution and an elevated Hb F level in peripheral blood, is in agreement to the report of Wayne et al. in an African-American with compound heterozygosity of a Black form of $(A\gamma\delta\beta)^0$ -thalassemia and the $-29 (A\rightarrow G) \beta^+$ -thalassemia mutation.¹² We only investigated two types of α -thalassemia ($\alpha^{-3.7}$ and $\alpha^{-4.2}$), the most prevalent in India. Another form of α -thalassemia may be a factor for milder clinical presentation of the patient.

The Indian subcontinent has a heterogeneous population with different hemoglobinopathies. These Hb disorders should be included in the prenatal diagnosis of patients with severe or mild thalassemia. The characterization of these hemoglobinopathies will facilitate a prevention and control program of hemoglobinopathies including thalassemia in this region.

Conflicts of interest

The authors declare no conflicts of interest

Acknowledgments

This study was supported by research funding from Indian Council of Medical Research (ICMR), New Delhi, Department of Science and Technology (DST), New Delhi, and National Health Mission (NHM), Odisha.

REFERENCES

- Christianskon AC, Howson CP, Modell B. The march of dimes global report on birth defects: the hidden toll of dying and disabled children. White Plains, New York: March of Dimes; 2006.
- Mohanty D, Colah RB, Gorakshakar AC, Patel RZ, Master DC, Mahanta J, et al. Prevalence of β -thalassemia and other haemoglobinopathies in six cities in India: a multicentre study. *J Community Genet.* 2013;4(1):33-42.
- Ramvalho AS, Silva RB, Teixeira RC, Compri MB. Hemoglobin screening: response of a Brazilian community to optional programs. *Cad Saude Publica.* 1999;15(3):591-5.
- Meher S, Patel DK, Patel S, Dehury S, Purohit P, Das K. Epidemiology of beta thalassaemia trait in eastern India. *Orissa Phys J.* 2012;9:24-9.

Table 1 – Hematological investigations in the case of compound heterozygous state for β -thalassemia with IVS1-5 (G→C) mutation and Indian deletion-Inversion $G\gamma(A\gamma\delta\beta)^0$ thalassemia with her parents.

Parameters	Index (follow-up) One year after hospitalization	Father	Mother
Complete blood count			
WBC ($10^3/\mu\text{L}$)	13	13.9	9.2
RBC ($10^6/\mu\text{L}$)	4.81	3.87	3.67
Hemoglobin (g/dL)	8.0	8.3	7.8
HCT (%)	32.3	30.4	29.7
MCV (fL)	67.2	78.6	80.9
MCH (pg)	16.6	21.4	21.3
MCHC (g/dL)	24.8	27.3	26.3
Platelets ($10^3/\mu\text{L}$)	125	312	188
Fractions of Hb variants by HPLC			
Hb A ₀ (%)	10.3	83	76.2
Hb A ₂ (%)	6.9	5.2	2.8
Hb F (%)	84.6	0.3	13

WBC: white blood cells; RBC: red blood cells; HCT: hematocrit; MCV: mean cell volume; MCH: mean cell hemoglobin; MCHC: mean cell hemoglobin concentration; HPLC: high-performance liquid chromatography.

5. Purohit P, Mashon RS, Patel S, Dehury S, Pattanayak C, Das K, et al. Clinical and molecular characterization of Hb Hofu in eastern India. *Int J Lab Haematol*. 2014;36:71-6.
6. Fonseca SF, Kerbauy J, Escrivao C, Figueiredo MS, Cancado R, Arruda VR, et al. Genetic analysis of beta-thalassemia major and beta-thalassemia intermedia in Brazil. *Hemoglobin*. 1998;22(3):197-207.
7. Craig JE, Barnetson RA, Prior J, Raven JL, Thein SL. Rapid detection of deletions causing $\delta\beta$ thalassemia and hereditary persistence of fetal hemoglobin by enzymatic amplification. *Blood*. 1994;83(6):1673-82.
8. Chong SS, Boehm CD, Higgs DR, Cutting GR. Single-tube multiplex-PCR screen for common deletional determinants of α -thalassemia. *Blood*. 2000;95(1):360-2.
9. Patel DK, Patel M, Mashon RS, Patel S, Dash PM, Das BS. Clinical & molecular characterisation of βS $G\gamma(A\gamma\delta\beta)^0$ -thalassemia in eastern India. *Hemoglobin*. 2010;34(6):604-9.
10. Nadkarni A, Wadia M, Gorakshakar A, Kiyama R, Colah RB, Mohanty D. Molecular characterization of db-thalassemia and hereditary persistence of fetal hemoglobin in the Indian population. *Hemoglobin*. 2008;32(5):425-33.
11. Pandey S, Pandey S, Ranjan R, Mishra R, Sharma M, Saxena R. Phenotypic heterogeneity of Asian Indian inversion deletions $G\gamma(A\gamma\delta\beta)^0$ breakpoint A and breakpoint B. *Ind J Clin Biochem*. 2013;28(1):98-101.
12. Waye JS, Eng B, Coleman MB, Steinberg MH, Alter BP. $\delta\beta$ thalassemia in an African-American: identification of the deletion endpoints and PCR-based diagnosis. *Hemoglobin*. 1994;18(6):389-99.