

## Article

# Genome-Wide Identification of R2R3-MYB Transcription Factor and Expression Analysis under Abiotic Stress in Rice

Lihua Kang<sup>1</sup>, Yangyang Teng<sup>1</sup>, Qiwen Cen<sup>1</sup>, Yunxia Fang<sup>1</sup>, Quanxiang Tian<sup>1</sup>, Xiaoqin Zhang<sup>1</sup>, Hua Wang<sup>2</sup>, Xian Zhang<sup>1,\*</sup> and Dawei Xue<sup>1,\*</sup> 

<sup>1</sup> College of Life and Environmental Sciences, Hangzhou Normal University, Hangzhou 311121, China; kanglihua\_hznu@163.com (L.K.); tyhznu@163.com (Y.T.); cenqiwen@stu.hznu.edu.cn (Q.C.); yxfang12@163.com (Y.F.); quanxiang@hznu.edu.cn (Q.T.); zxq@hznu.edu.cn (X.Z.)

<sup>2</sup> State Key Laboratory for Managing Biotic and Chemical Threats to the Quality and Safety of Agro-Products, Institute of Virology and Biotechnology, Zhejiang Academy of Agricultural Sciences, Hangzhou 310021, China; wanghua3@hotmail.com

\* Correspondence: zhangxian@hznu.edu.cn (X.Z.); dwxue@hznu.edu.cn (D.X.)

**Abstract:** The myeloblastosis (MYB) family comprises a large group of transcription factors (TFs) that has a variety of functions. Among them, the R2R3-MYB type of proteins are the largest group in plants, which are involved in controlling various biological processes such as plant growth and development, physiological metabolism, defense, and responses to abiotic and biotic stresses. In this study, bioinformatics was adopted to conduct genome-wide identification of the R2R3-MYB TFs in rice. We identified 190 MYB TFs (99 R2R3-MYBs), which are unevenly distributed on the 12 chromosomes of rice. Based on the phylogenetic clustering and protein sequence characteristics, OsMYBs were classified into five subgroups, and 59.6% of the *Os2R\_MYB* genes contained two introns. Analysis of cis-acting elements in the 2000 bp upstream region of *Os2R\_MYB* genes showed that all *Os2R\_MYB* genes contained plant hormones-related or stress-responsive elements since 91.9%, 79.8%, 79.8%, and 58.6% of *Os2R\_MYB* genes contain ABRE, TGACG, CGTCA, and MBS motifs, respectively. Protein–protein network analysis showed that the *Os2R\_MYBs* were involved in metabolic process, biosynthetic process, and tissue development. In addition, some genes showed a tissue-specific or developmental-stage-specific expression pattern. Moreover, the transcription levels of 20 *Os2R\_MYB* genes under polyethylene glycol (PEG) and cadmium chloride (CdCl<sub>2</sub>) stress inducers were dissected by qRT-PCR. The results indicated genes with an altered expression upon PEG or CdCl<sub>2</sub> stress induction. These results potentially supply a basis for further research on the role that *Os2R\_MYB* genes play in plant development and stress responses.

**Keywords:** R2R3-MYB; genome-wide identification; abiotic stress; rice



**Citation:** Kang, L.; Teng, Y.; Cen, Q.; Fang, Y.; Tian, Q.; Zhang, X.; Wang, H.; Zhang, X.; Xue, D. Genome-Wide Identification of R2R3-MYB Transcription Factor and Expression Analysis under Abiotic Stress in Rice. *Plants* **2022**, *11*, 1928. <https://doi.org/10.3390/plants11151928>

Academic Editors: Yi He and Dali Zeng

Received: 29 June 2022

Accepted: 23 July 2022

Published: 25 July 2022

**Publisher's Note:** MDPI stays neutral with regard to jurisdictional claims in published maps and institutional affiliations.



**Copyright:** © 2022 by the authors. Licensee MDPI, Basel, Switzerland. This article is an open access article distributed under the terms and conditions of the Creative Commons Attribution (CC BY) license (<https://creativecommons.org/licenses/by/4.0/>).

## 1. Introduction

MYB transcription factor families are abundant in plants, accounting for about 9% of total transcription factors in *Arabidopsis thaliana* [1]. Proteins differ on the number of basic MYB domain repeats, conferring the DNA-binding capacity. A MYB DNA-binding domain is about 52 amino acid residues (R) long. Approximately 18–19 amino acid residues regularly repeat in the tryptophan residue, forming a helix-turn-helix (HTH) fold [2,3]. On the basis of the number of adjacent repeats, MYB can be classified into four categories: R1/R2, R3-MYB (1R-MYB), R2R3-MYB (2R-MYB), R1R2R3-MYB (3R-MYB), and 4R-MYB, which contain one, two, three, and four MYB repeats, respectively. In plants, most MYB transcription factors belong to the R2R3 type [4,5].

MYB proteins function in a variety of biological processes, including plant developmental regulation, plant hormone responses, cell differentiation, and adaption to biotic and abiotic stresses. The *MYB* gene regulating anthocyanin biosynthesis was firstly identified in *Zea mays* (C1) [6]. Since then, numerous *MYB* genes have been isolated and identified

in plants. For example, expression of the snapdragon (*Antirrhinum majus*) R2R3-MYB proteins AmMYB308/330 downregulated the expression level of the genes related to lignin synthesis in tobacco, resulting in lignin reduction [7]. Co-expression of soybean *GmIFS1* (encoding isoflavone synthase 1) and Arabidopsis *AtMYB12* in tobacco can effectively promote isoflavone synthesis [8]. In strawberry, the natural variation of *MYB10* caused the change in color of skin and flesh [9]. The R2R3-MYB TF MYB6 regulates different branches of the phenylpropanoid biosynthesis pathway and promotes anthocyanin biosynthesis in *Populus tomentosa* [10]. Some MYB TFs have also been comprehensively studied in abiotic stress. Transgenic Arabidopsis plants over-expressing the *OsMYB3R-2* showed enhanced resistance to drought, salt, and cold stress [11]. Similarly, enhanced cold-stress tolerance was observed in tobacco overexpressing the *PbrMYB5* [12], and transgenic Arabidopsis plants overexpressing the *MYB4* exhibited higher cadmium (Cd) tolerance [13]. The R2R3-MYB TFs in rice exerted an important effect in plant development and abiotic stress response. In development, some MYB TFs have been reported to affect male fertility [14,15], hull and grain development [16], and flower and spikelet development [17] of rice. In addition, it also showed a significant effect on salt [18], drought [19], and cold [20] resistance and heavy metal [21] tolerance in rice. Studies have shown that MYB-binding region enrichment was related to drought induction, suggesting its regulatory role in rice drought response [22].

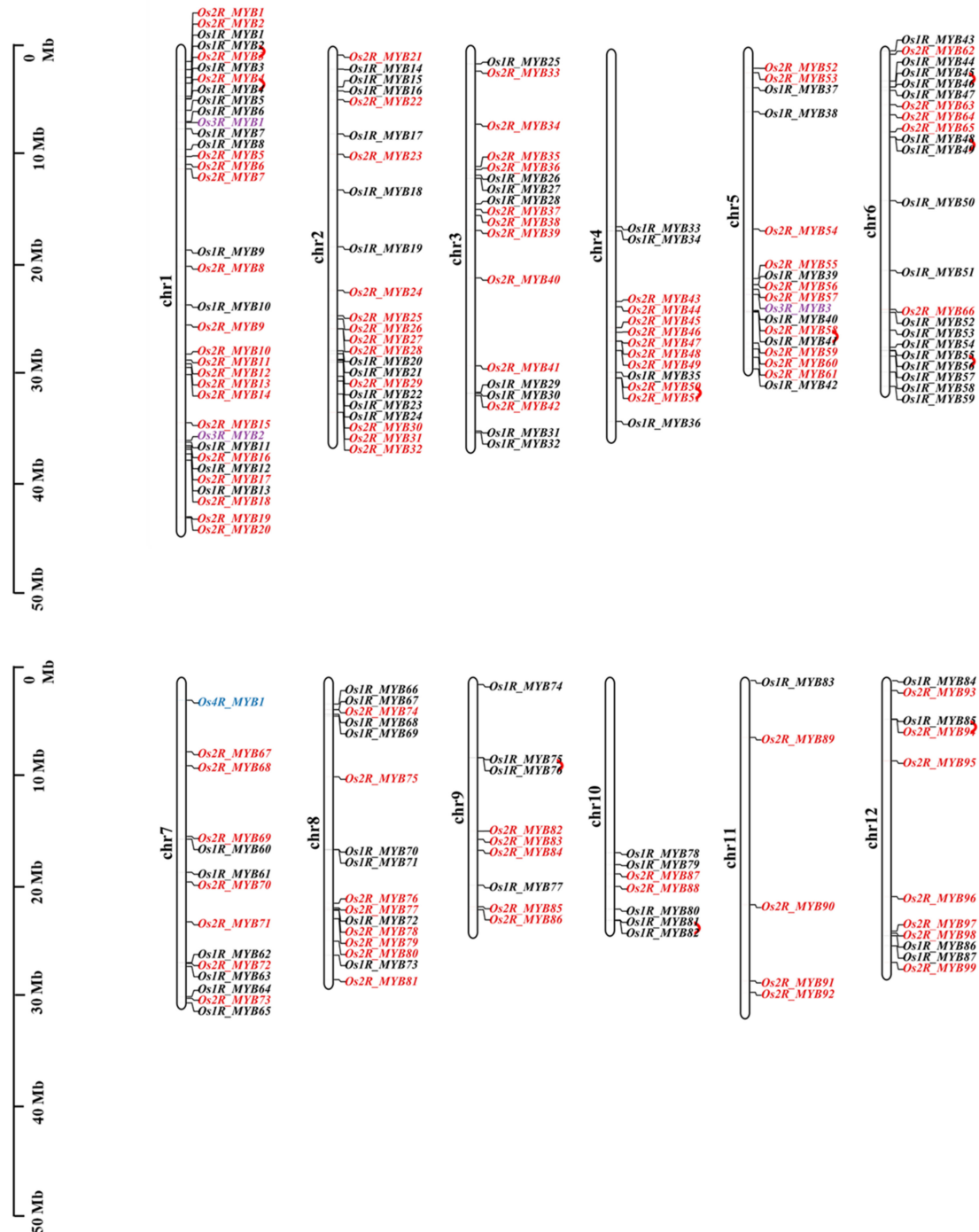
Rice (*Oryza sativa* L.), as the most important food crop in China, provides the staple food for about 50% of the world's population. It ranks first in China's food production chain, but the yield is easily affected by the availability of water, temperature, diseases, and pests during its development. With the development of modern production, soil cadmium pollution is emerging as a more serious problem. Since rice contains transporters uptaking cadmium, a serious threat has been raised up to food safety and human health [23]. However, the studies about the MYB transcription factor involved in heavy metal stress are rarely reported. Therefore, it is very important to study the mechanism underlying the stress responses of rice varieties. In this study, the polyethylene glycol 6000 (PEG) and cadmium chloride ( $\text{CdCl}_2$ ) treatments were applied to simulate drought and heavy metal stress for exploring its related response pathways. The availability of rice genome sequencing has facilitated widespread biological research [24,25]. In this study, all rice MYB proteins in the genome database were identified using bioinformatics methods, including chromosome localization, phylogenetic analysis, gene structure analysis, and promoter cis-element analysis of *Os2R\_MYBs*. In addition, based on genetic relevance, predicted gene expression levels, and physicochemical properties of proteins, twenty 2R- (R2R3-) *OsMYB* genes were selected, and their expression was analyzed after PEG and  $\text{CdCl}_2$  treatments on Nipponbare. Quantitative real-time (qRT)-PCR was used to determine gene transcription levels and the expression pattern in response to abiotic stress. This study can be regarded as a basis for functional research on the MYB TF family in rice, which will be beneficial to improving the quality and yield of rice and breeding new varieties.

## 2. Results

### 2.1. Genome-Wide Identification and Chromosomal Locations of *OsMYBs*

In this study, 190 *OsMYB* genes were identified by genome-wide analysis and classified into four subfamilies according to the number of MYB DNA-binding domains: 1R-MYB (R1/R2, R3-MYB), 2R-MYB (R2R3-MYB), 3R-MYB (R1R2R3-MYB), and 4R-MYB. We found that R2R3-MYB genes accounts for 52.1% of the total MYB genes in rice. Studies have revealed that most of the MYB TFs involved in resistance to adversity are the R2R3-MYB type [26]. Based on the number of adjacent repeats, they were named as *Os1R\_MYB1*~*Os1R\_MYB87*, *Os2R\_MYB1*~*Os2R\_MYB99*, *Os3R\_MYB1*~*Os3R\_MYB3*, and *Os4R\_MYB1*. The results of chromosome visualization (Figure 1) showed that 190 *OsMYB* genes are located on 12 chromosomes. There were more *OsMYB* genes on chromosomes 1, 2, and 6 (35, 23, and 22, respectively) and fewer *OsMYB* genes on chromosomes 9, 10, and 11 (9, 7, and 5, respectively). There were 20 *Os2R\_MYB* genes accounting for 20.2% of the total 2R-MYB-type genes located on chromosome 1. In addition, there were 10 repeat gene

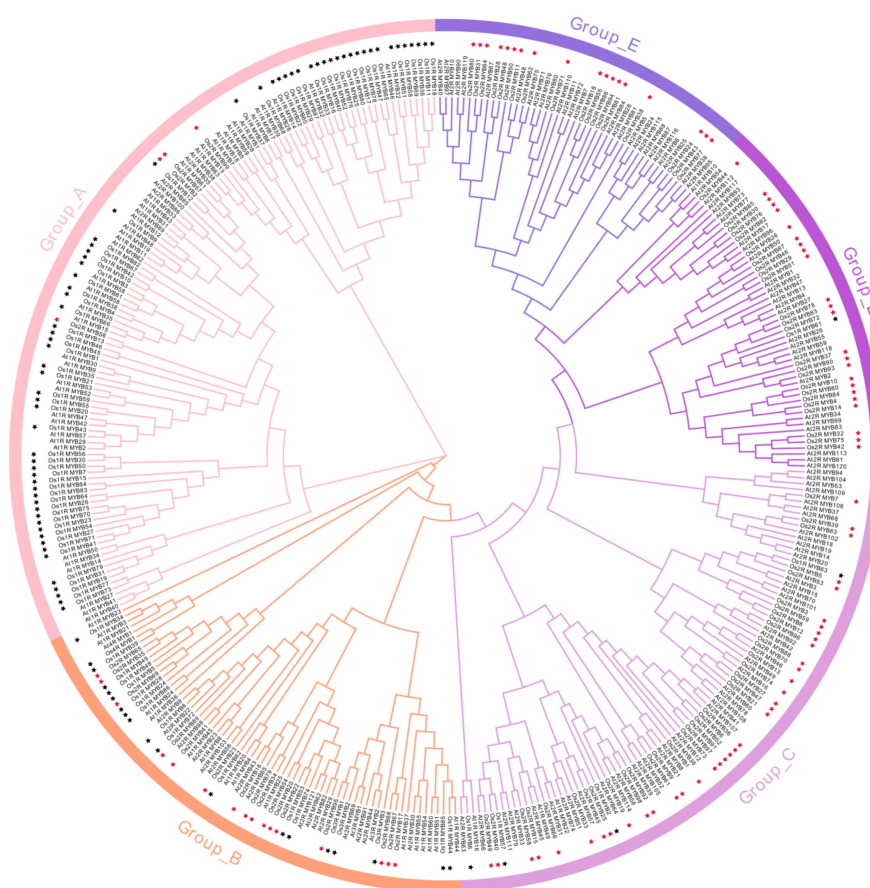
pairs. We also analyzed the physicochemical properties of the family member 2R-MYB proteins. The results (Table S1) show that the GRAVY of 99 proteins was negative, and average instability index was 57.15, indicating that *Os2R\_MYB* proteins were almost all unstable hydrophilic proteins (GRAVY < 0, instability index > 40).



**Figure 1.** Distribution of *OsMYBs* on rice chromosomes. The rod represents the 12 chromosomes of rice, and the scale on the left indicates its length. Different colors represent the different MYB type: 1R\_MYB (Black); 2R\_MYB (Red); 3R\_MYB (purple); 4R\_MYB (blue). The repeat gene pairs were linked using red curves.

## 2.2. Phylogenetic Analysis of OsMYBs

In plants, the R2R3-MYB type of proteins play an important role in the developmental stages and under the stress responses. Therefore, phylogenetic trees of MYB proteins in *Oryza sativa* L. and *Arabidopsis thaliana* were constructed (Figure 2) to further study the evolutionary relationships between 2R-MYB proteins. Multiple sequence alignment of rice 2R-MYB proteins (Supplementary Figure S1) showed the “-W-(X18/X19)-W-(X18/X19)-W-... -W/F/I/L-W(X18/X19)-W-” structure, thus forming the helix-turn-helix (HTH) fold. Based on the type of conserved MYB domain, the *Os2R-MYB* proteins were classified into five subgroups (Figure 2). This conserved tryptophan (W), regularly repeated, is essential for maintaining the hydrophobic function of proteins. The first W of the R3 is usually replaced by aromatic or hydrophobic amino acids, such as leucine (L), isoleucine (I), or phenylalanine (F) [2,3,27]. In the *Os2R-MYB* protein of Group\_2B, the first W of the R3 domain was replaced by F. In Group\_2C, all of the first W of the R3 domain were replaced by F except for *Os2R-MYB95/68/67/17*, while most of the W were replaced by F in Group\_2D, Group\_2E, and Group\_2F. In a few cases, the W was replaced by I or L. Interestingly, the R2 and R3 had swapped places in Group\_2A.

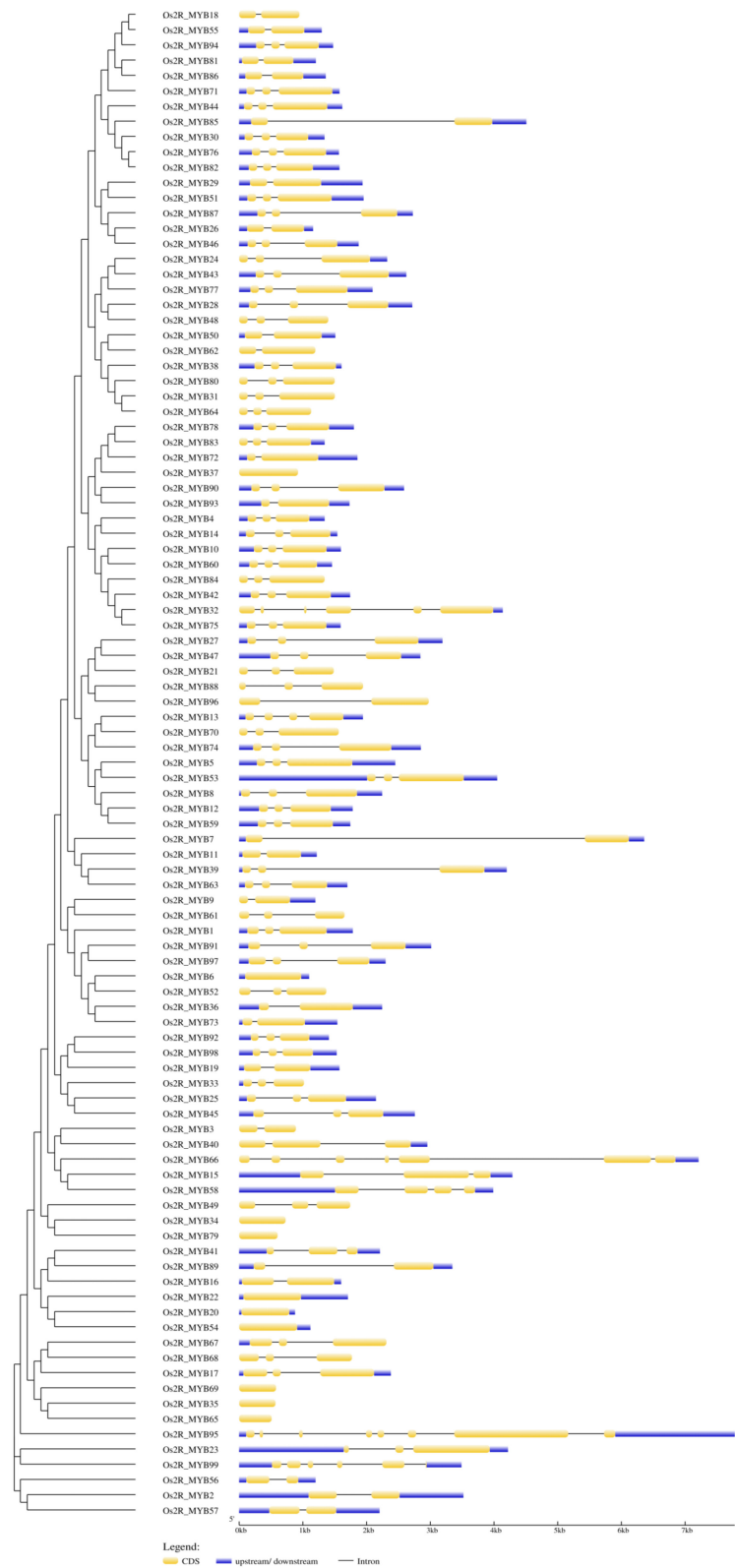


**Figure 2.** Phylogenetic relationship of *Oryza sativa* L. and *Arabidopsis* MYB proteins. The phylogenetic tree of MYB proteins was constructed by the neighbor-joining method of Mega-X with a bootstrap value set to 1000. It was classified into five groups (Group\_A/B/C/D/E) according to the sequence characteristic of proteins. The asterisk indicates a protein origin from rice, and the crimson asterisk represents R2R3\_MYB proteins.

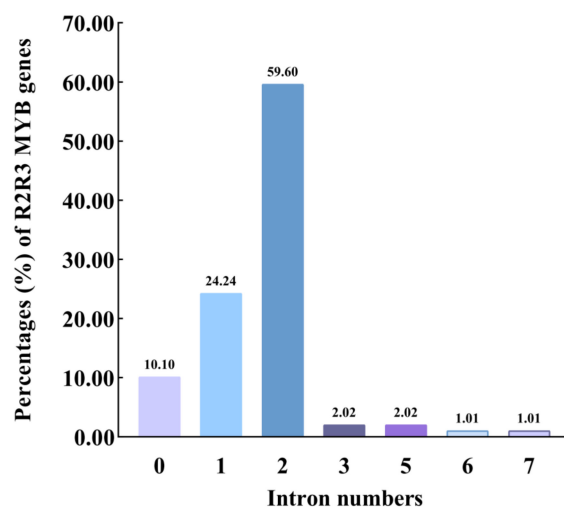
## 2.3. Structure of *Os2R-MYBs* Genes

Exon and intron distribution profiles of *Os2R-MYBs* were analyzed by GSDS V2.0 to align corresponding genomic sequences (Figure 3), and the number of introns was statistically analyzed (Figure 4). The result showed that most *Os2R-MYB* genes contained

two introns (59, 59.6%). *Os2R\_MYB66* contained six introns, and *Os2R\_MYB95* contained seven introns, while ten genes were intronless (Table S2).



**Figure 3.** Phylogenetic tree and intron/exon structure of *Os2R\_MYB* genes. The blue boxes represent the 5' or 3' untranslated regions (UTR), the yellow boxes represent the coding sequences (CDS), and the black lines represent the intron regions.



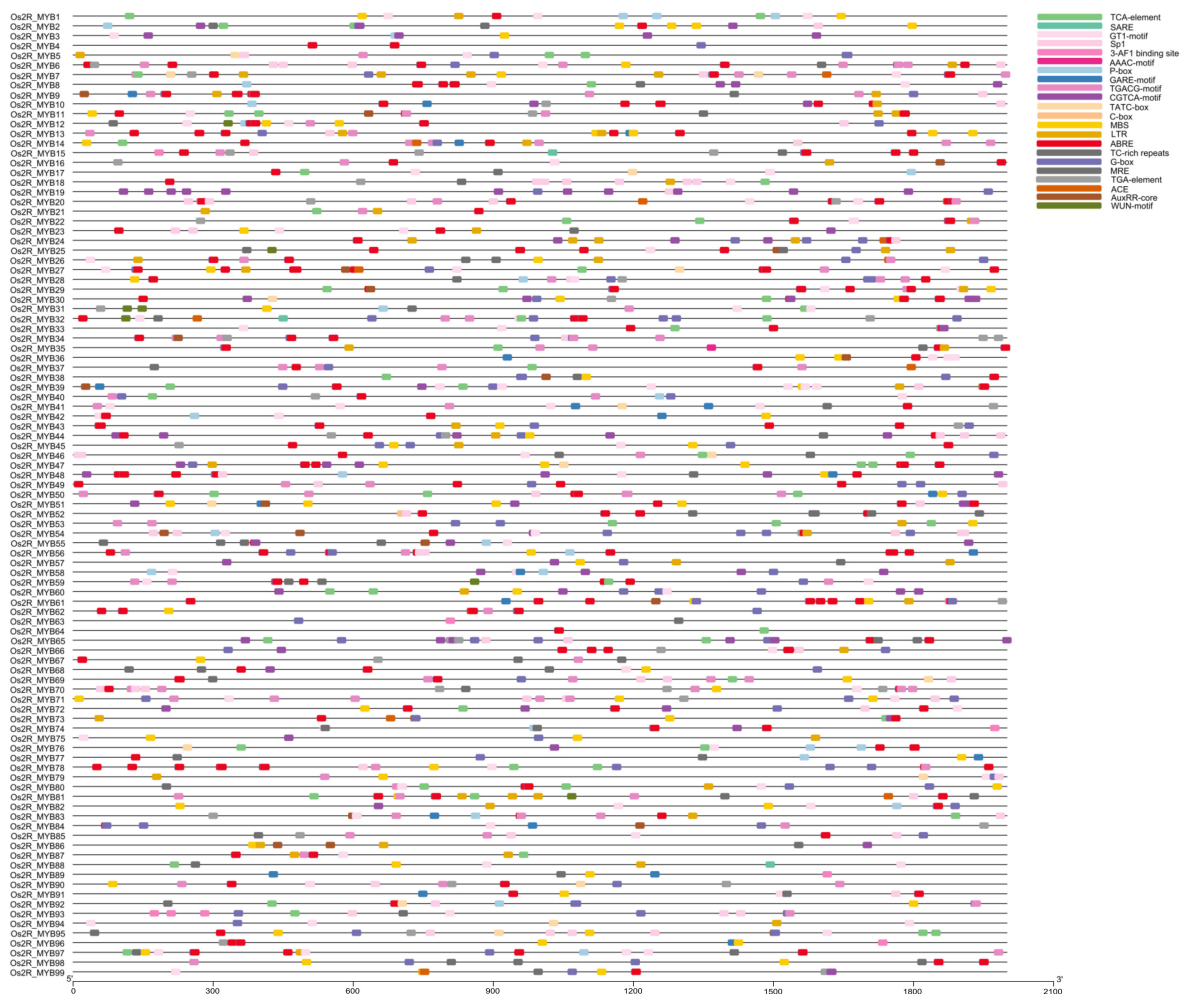
**Figure 4.** Statistical analysis of the intron numbers of 99 *Os2R\_MYB* genes. The bar chart shows the proportion of *Os2R\_MYB* genes with different intron numbers in the 99 *Os2R\_MYB* genes.

#### 2.4. Analysis of Promoter Cis-Elements

To further understand the regulatory mechanism of the *Os2R\_MYB* genes in plant growth, development, and stress response, the 2000 bp regions upstream of 99 *Os2R\_MYBs* were analyzed. 10 hormone and 12 stress-response cis-elements (Figures 5 and 6) were detected in the promoter region of the *Os2R\_MYBs*. Ten hormone-responsive cis-elements included the TCA-Element/SARE (salicylic acid response), the ABRE (abscisic acid response), the TATC-box/P-box/gare-motif (gibberellin response), the TGACG-motif/CGTCA-motif (MeJA response), and the TGA-element/AuxRR-core (auxin response). Twelve stress-related elements included the GT1-motif/G-box/MRE/Sp1/ACE/3-AF1 binding site/AAAC-motif (light), the MBS (drought), the LTR (low temperature), TC-rich repeats (defense and stress response), and the WUN-motif (wound). A total of 91 *Os2R\_MYB* genes had the ABRE motif, indicating the potential responses to ABA. The TGACG or the CGTCA motifs were detected in 79 *Os2R\_MYB* genes, indicating that they were sensitive to methyl jasmonic acid. Fifty-eight *Os2R\_MYB* genes had the MBS motif, indicating that they were involved in the drought-stress response of plants (Table 1).

**Table 1.** Statistical analysis of the cis-elements in 2000 bp regions upstream of *Os2R\_MYB* genes.

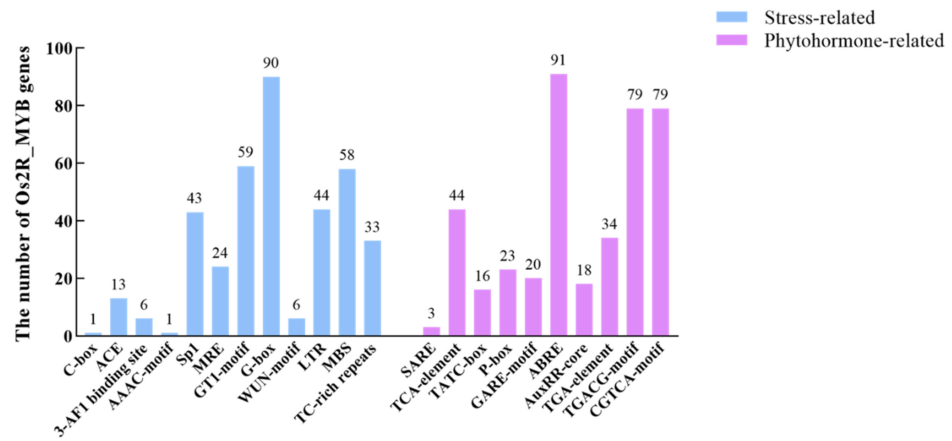
Type	Cis-Elements	Gene Numbers	Percentages
Stress-related	C-box	1	1.0%
	ACE	13	13.1%
	3-AF1 binding site	6	6.1%
	AAAC-motif	1	1.0%
	Sp1	43	43.4%
	MRE	24	24.2%
	GT1-motif	59	59.6%
	G-box	90	90.9%
	WUN-motif	6	6.1%
	LTR	44	44.4%
	MBS	58	58.6%
	TC-rich repeats	33	33.3%
	Phytohormone-related	SARE	3
TCA-element		44	44.4%
TATC-box		16	16.2%
P-box		23	23.2%
GARE-motif		20	20.2%
ABRE		91	91.9%
AuxRR-core		18	18.2%
TGA-element		34	34.3%
TGACG-motif		79	79.8%
CGTCA-motif	79	79.8%	



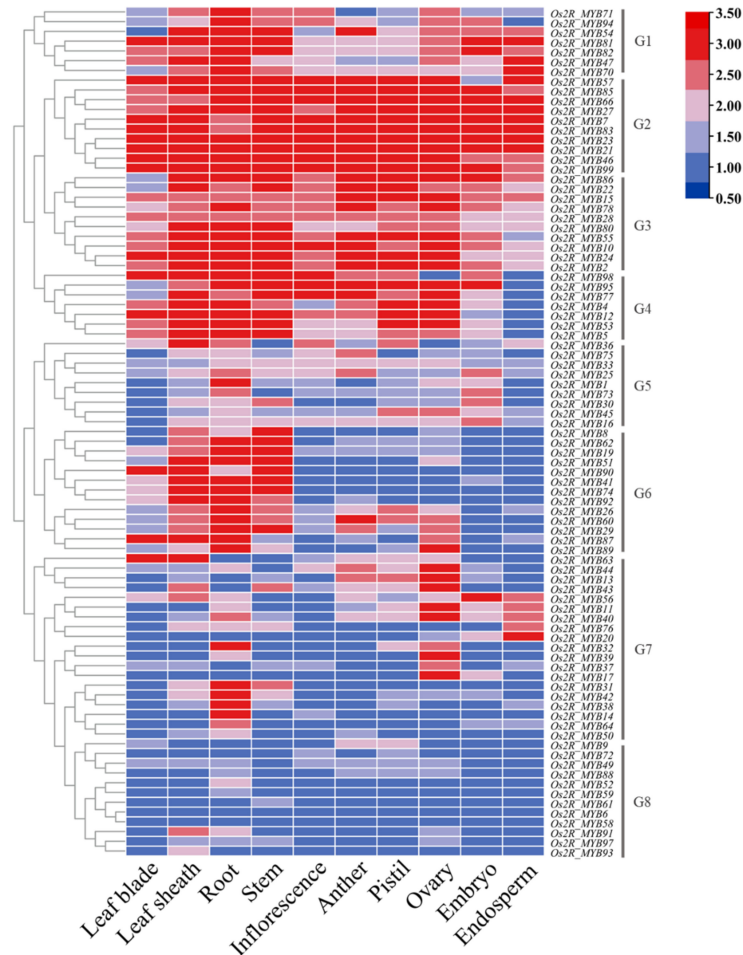
**Figure 5.** Distribution of cis-elements in promoter sequences of 99 *Os2R\_MYB* genes. TCA-element/SARE, cis-acting element involved in salicylic acid responsiveness; MBS, MYB binding site involved in drought-inducibility; GT1-motif/Sp1/3-AF1/AAAC, light-responsive element; LTR, cis-acting element involved in low-temperature responsiveness; ABRE, cis-acting element involved in the abscisic acid responsiveness; P-box/GARE, gibberellin-responsive element; TGACG/CGTCA motifs, involved in the MeJA responsiveness; TC-rich repeats, cis-acting element involved in defense and stress responsiveness; MRE, MYB binding site involved in light responsiveness; TATC-box/C-box, cis-acting element involved in gibberellin responsiveness; TGA-element, auxin-responsive element; G-box/ACE, cis-acting element involved in light responsiveness; AuxRR-core, involved in auxin responsiveness; WUN-motif, wound-responsive element.

### 2.5. The Relative Expression Level of *Os2R\_MYBs* in Various Tissues and Growth Stages

To explore the function of *Os2R\_MYBs*, we dissected the expression levels of *Os2R\_MYB* genes in various tissues and growth stages (Figure 7). Based on the expression analysis, these genes were classified into eight groups (G1–G8) according to cluster analysis results. Group G1 contained 7 *Os2R\_MYB* genes, all highly expressed in roots, implying that these genes might be involved in root development. Most genes in G2 and G3 groups were highly expressed in all tissues, indicating their universal roles. Seven *Os2R\_MYB* genes in the G4 group were all lowly expressed in the endosperm, implying that these genes may not be involved in endosperm development. The highly expressed MYB genes were mainly located in leaf sheath, root, and stem but showed low expression in other tissues or organs in G6. The expression level of G8 genes was lower in all tissues.



**Figure 6.** Statistical analysis of the cis-elements in 2000 bp regions upstream of *Os2R\_MYB* genes. The bar chart shows the number of *Os2R\_MYB* genes with various cis-acting elements in 99 *Os2R\_MYB* genes. The light blue and purple bars represent stressed-related and phytohormone-related cis-acting elements, respectively.

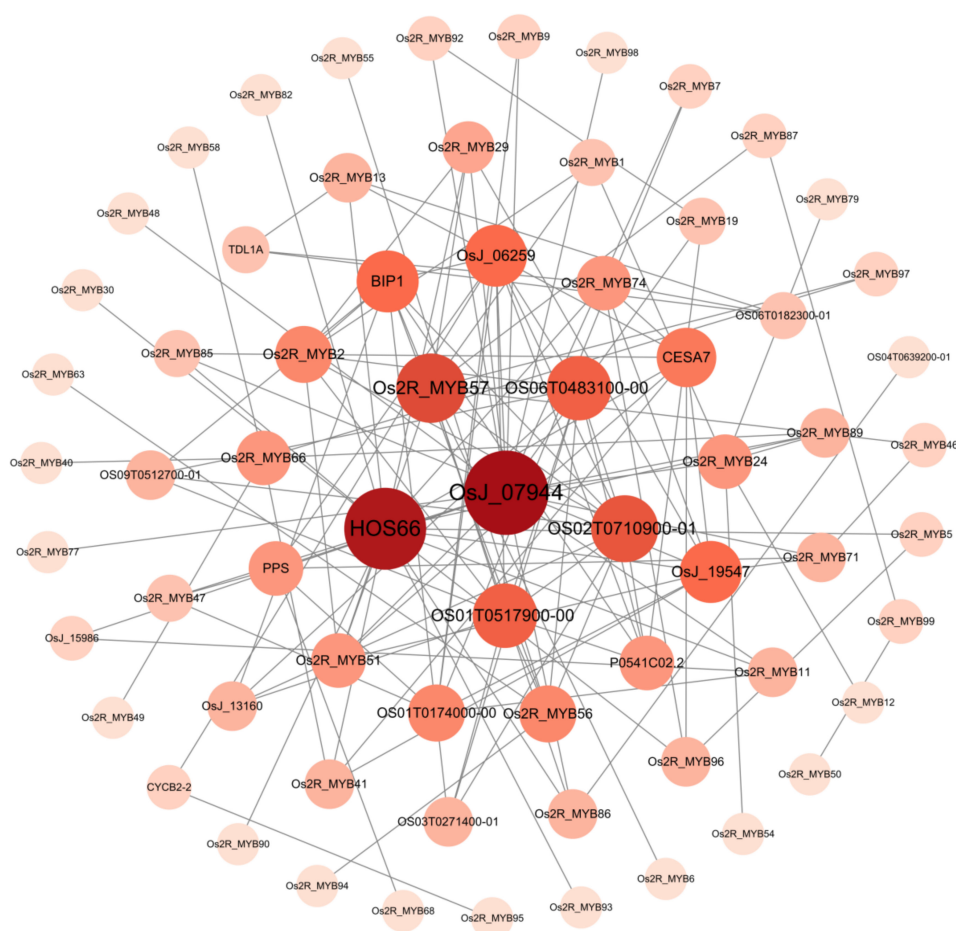


**Figure 7.** The relative expression level of *Os2R\_MYB* genes in various tissues and growth stages. Lower expression is represented with dark blue; higher expression is represented with red. Leaf-blade, vegetative leaf-blade; Leaf-sheath, vegetative leaf-sheath; Root, vegetative root; Stem, reproductive stem; Inflorescence, 0.6–1 mm; Anther, 0.7–1 mm; Pistil, 5–10 cm; Ovary, 3 DAF; Embryo, 10 DAF; Endosperm, 42 DAF.



## 2.6. Protein–Protein Interaction Network Analysis

Various proteins interact with each other to form a protein interaction network, which helps to regulate the biological signal transmission and related gene expression. In order to further study the function of R2R3\_MYB proteins in rice, we analyzed the protein-protein interaction network of 99 *Os2R\_MYBs* (Figure 8 and Table S3). Protein–protein interaction network protein annotations and functional annotations are shown in Tables S4 and S5. The result showed that OsJ\_07944, HOS66, Os2R\_MYB57, OS01T0517900-00, and OS02T0710900-01 played pivotal roles in this network and were involved in metabolic process, biosynthetic process, and tissue development in plant. There was a putative interaction between Os2R\_MYB57 and Os2R\_MYB1/6/29/46/51/87/97, BIP1, and OS02T0710900-01, in which BIP1 was involved in rice endosperm regulation, suggesting that Os2R\_MYB57 may have a similar function [28]. The OsJ07944 (OS02T0682500-01), a putative anthocyanin biosynthetic gene regulator PAC1, interacted with Os2R\_MYB11/19/24/29/47/48/51/71/77/92/98/89.

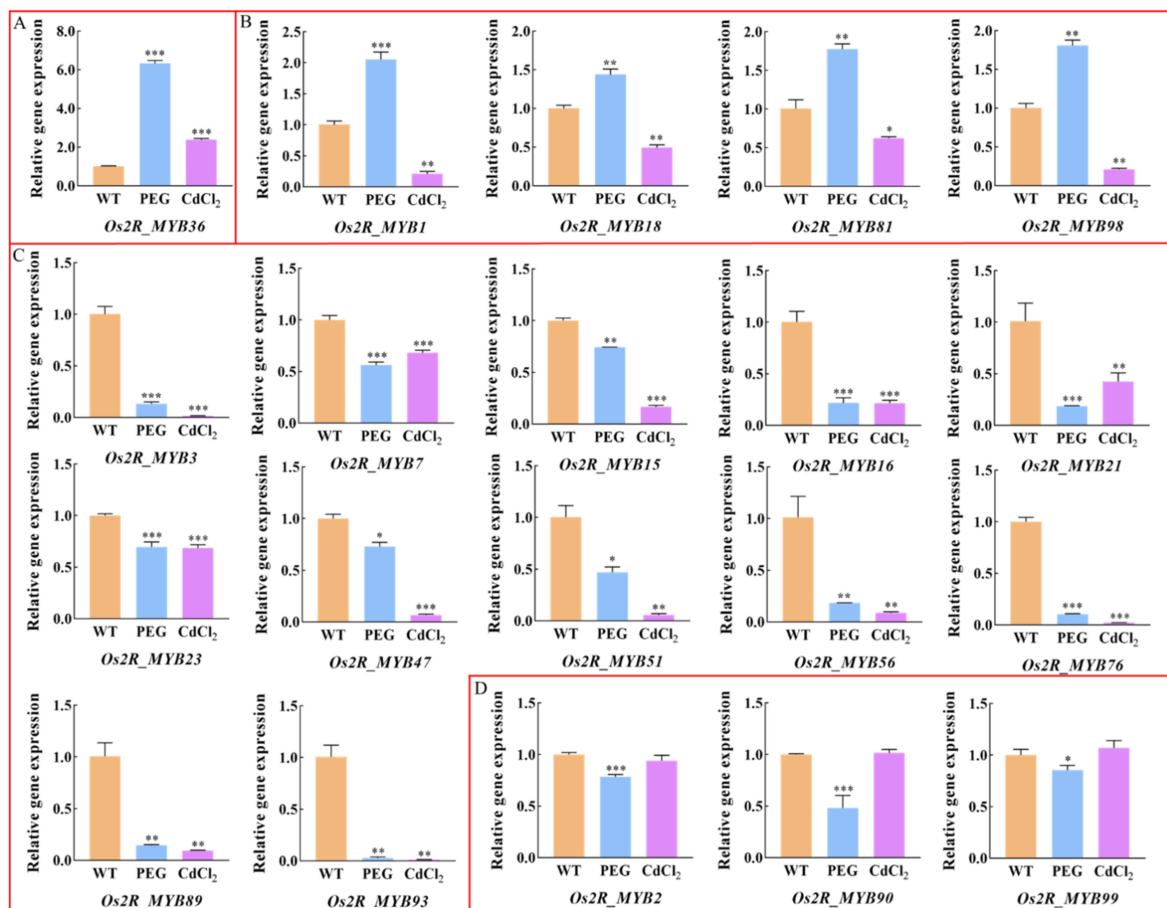


**Figure 8.** Interaction analysis of R2R3\_MYB proteins using the STRING servers in rice. The nodes represent different proteins, and the edges represent the interaction between proteins. Proteins are arranged according to the degree (degree = 1–18) algorithm in Cytoscape. The value of degree corresponds to the color shade and size of nodes.

## 2.7. Gene Expression Levels of *Os2R\_MYBs* under Abiotic Stresses

We selected 20 *Os2R\_MYB* genes and analyzed their expression levels under either PEG or CdCl<sub>2</sub> treatments by qRT-PCR (Figure 9 and Figure S2). The results indicated that most of the 20 *Os2R\_MYB* genes exhibited altered expression upon PEG or CdCl<sub>2</sub> stress induction. Five *Os2R\_MYB* genes were upregulated during PEG treatment. The expression levels of *Os2R\_MYB36*, *Os2R\_MYB1*, *Os2R\_MYB18*, *Os2R\_MYB81*, and *Os2R\_MYB98* were significantly upregulated. The gene expression levels of twelve *Os2R\_MYBs*, namely *Os2R\_MYB3*,

*Os2R\_MYB7*, *Os2R\_MYB15*, *Os2R\_MYB16*, *Os2R\_MYB21*, *Os2R\_MYB23*, *Os2R\_MYB56*, *Os2R\_MYB76*, *Os2R\_MYB89*, *Os2R\_MYB93*, *Os2R\_MYB2*, and *Os2R\_MYB99*, were significantly downregulated. Under  $\text{CdCl}_2$  stress treatment, the expression level of *Os2R\_MYB36* was significantly upregulated. *Os2R\_MYB3*, *Os2R\_MYB7*, *Os2R\_MYB15*, *Os2R\_MYB23*, *Os2R\_MYB47*, *Os2R\_MYB76*, *Os2R\_MYB89*, and *Os2R\_MYB93* genes were significantly downregulated. However, the expression level of *Os2R\_MYB2*, *Os2R\_MYB90*, and *Os2R\_MYB99* genes had no obvious alteration. In general, the twelve genes' (*Os2R\_MYB3/7/15/16/21/23/47/51/56/76/89/93*) expression levels were downregulated, only one gene (*Os2R\_MYB36*) was upregulated, and four genes (*Os2R\_MYB1/18/81/98*) had absolutely opposite expression patterns under drought and cadmium stresses. The statistical results are shown in Table S6. Among these genes, *Os2R\_MYB1* is involved in phosphorus starvation signaling and gibberellin as a regulatory factor [29]. *Os2R\_MYB90* regulates phosphorus accumulation and phosphorus-responsive transporters in rice, and overexpression of *Os2R\_MYB90* enhances plant growth and root system architecture [30]. The *Os2R\_MYB36*-overexpressing plants were more sensitive to abscisic acid and more tolerant to cold, dehydration, and salt stresses than control plants [31]. These results showed that the selected *Os2R\_MYB* genes were responsive to abiotic stress, suggesting a potential role involved in the stress regulation.



**Figure 9.** Relative gene expression of 20 *Os2R\_MYBs* under PEG and  $\text{CdCl}_2$  stress treatments. (A–D) represent different expression patterns under PEG and  $\text{CdCl}_2$  stress treatment. Nipponbare cultivar was used as the control; *OsActin1* was used as a reference gene. The relative expression levels of each gene were calculated by the  $2^{-\Delta\Delta\text{Ct}}$  method. All reactions were set up in triplicate. Bars represent the standard deviation (SD) of the three replicates. A significant difference is indicated by an asterisk according to *t*-test (\*  $p < 0.05$ , \*\*  $p < 0.01$ , and \*\*\*  $p < 0.001$ ).

### 3. Discussion

MYB TF family is one of the most abundant families in plants, with complex and diverse functions. This study identified 190 MYB family members in the rice genome unevenly distributed on all 12 chromosomes (Figure 1), of which 99 were R2R3-MYB (52.1%). R2R3-MYB group is one of the largest group of proteins in plants. They all contain two R structures at the N-terminal but are variable at the C-terminal containing transcriptional activation or inhibition domains, and conserved threonine and serine residues served as post-translational modification sites [5,32]. R2R3-MYB TFs are extensively involved in hormone response, cell differentiation, secondary metabolism, abiotic stress, resistance to disease, and insect infestation [33–37]. For example, overexpression of *SG3*, an R2R3-MYB protein-encoding gene, can promote rice grain elongation [38]. The R2R3-MYB transcription factor MYB106 in *Arabidopsis thaliana* is a negative regulator of plant flowering. In the mutant without *MYB106*, plants show early flowering in long-day growth condition [39]. Overexpression of *GmMYB81* endows plants with tolerance to salt and drought stress [36]. The “-W-(X18/X19)-W-(X18/X19)-W- . . . W/F/I/L-W(X18/X19)-W-” structure in the N-terminal of MYB domain is the key sequence of its complex functions. We aligned the sequences of the 2R-MYB protein of rice (Figure S1), and the results showed that almost all 99 2R-MYB proteins contained the structure. The first W of the R3 domain was usually replaced by aromatic or hydrophobic amino acids such as leucine (L), isoleucine (I), or phenylalanine (F), which together form a hydrophobic core [2,27], conferring their complex functions. Interestingly, the R2 and R3 had swapped places in *Os2R\_MYB2/56/57*. We constructed phylogenetic trees of MYB proteins in *Oryza sativa* L. and *Arabidopsis thaliana* (Figure 2) and classified them into five subgroups based on the key sequence features. Most plant proteins are hydrophilic, and thus, some protein partners or signal peptides are needed to participate the transportation and localization of proteins through lipid bilayer. For example, in soybean, previous studies have shown that thylakoid transport peptides affect the expression and localization of NdhB subunits [40]. Analysis of the physicochemical properties of *Os2R\_MYB* protein (Table S1) showed that most types of 2R-MYB proteins were hydrophilic, and a similar functional mechanism might exist, requiring further study.

Gene structure is important to the study of gene evolution. To better comprehend the evolutionary relationship of the *Os2R\_MYB* genes, their exon and intron distribution profiles were analyzed and counted (Figures 3 and 4). The result showed that most *Os2R\_MYB* genes were evolutionarily conserved and contained two introns (59, 59.6%). *Os2R\_MYB66* contained six introns, and *Os2R\_MYB95* contained seven introns, while ten genes were intronless (Table S2).

In this study, we used the predicted gene expression data to dissect the expression patterns of *Os2R\_MYB* genes in various tissues and growth stages (Figure 7), and combined with the 2R-MYB protein phylogenetic tree cluster analysis in rice and *Arabidopsis* (Figure 2), the functions of some *Os2R\_MYB* genes could be predicted. *At2R\_MYB52* (At3g27810) and *At2R\_MYB105* (At5g40350) are both induced by jasmonate and have an important effect in stamen development [41]. *At2R\_MYB112* (At5g56110) is clustered with *Os2R\_MYB44* (Os04g0470600), *Os2R\_MYB44* is a key regulator of tapetal development and pollen wall formation, and *At2R\_MYB112* is also involved in the regulation of pollen wall formation [42,43]. These results suggested the reliability of our phylogenetic tree clustering. In addition, *At2R\_MYB33* (At2g32460) and *Os2R\_MYB58* (Os05g0490600) are clustered, and *At2R\_MYB33* may mediate gibberellin signaling in flowering responses, conferring their functions in root tip and subsequent stem tissue during germination [44]. *Os2R\_MYB66* was highly expressed in roots, stems, and inflorescences, suggesting that *Os2R\_MYB66* might have similar functions to *At2R\_MYB33*.

Protein–protein network analysis shows that the *Os2R\_MYB* protein families play a significant role in biological signal transmission and gene expression regulation of the life process (Figure 8). The mechanism of action of miRNA is directly related to protein, and miRNA plays its biological function mainly by participating in the regulation of

downstream gene translation process. Abnormal protein expression is closely related to the development and stress resistance of plants. Further study of the miRNA interaction network will help provide a basis for future functional analysis. For example, previous studies have clarified the functions of *TaTALs* in development and stress response through miRNA interaction network analysis [45,46]. We further explored *Os2R\_MYB* genes in the abiotic stress response and found that *Os2R\_MYB36* gene expression levels were significantly higher, while *Os2R\_MYB3/7/15/16/21/23/47/51/56/76/89/93* gene expression levels were significantly lower (Figure 9, Figure S2 and Table S6) under the stress of drought and cadmium. These results exhibited that these genes were involved in regulating rice anti-stress response. Except for *Os2R\_MYB89*, ABRE elements were existent in the promoter regions of these genes (Figures 5 and 6), suggesting that these genes may be involved in the response to drought and heavy metal stress via ABA signaling pathway. The promoter regions of *Os2R\_MYB18/81/98/23* all contain TC-rich repeats, indicating that these genes are involved in plant defense response and environmental stress. In plants, the salicylic acid (SA) is closely related to the formation of plasmodesmata, promoting bud germination [47,48]. The promoter region of *Os2R\_MYB15/32/88* contained SARE, indicating that these genes may be involved in the regulation of SA, which is involved in plant growth and development.

#### 4. Materials and Methods

##### 4.1. Identification of MYB Family Members in Rice and Their Chromosomal Locations

The DNA and amino acid sequences of MYB TF of rice were downloaded from the MSU database (<http://rice.uga.edu/index.shtml>) (accessed on 11 November 2021) [49] based on the pfam family number (PF00249), generating a list of 427 DNA and protein sequences. Redundant sequences were deleted through the CD-Hit website (<http://weizhong-lab.ucsd.edu/cdhit-web-server/cgi-bin/index.cgi?cmd=cd-hit>) (accessed on 11 November 2021) [50], and 239 non-redundant protein sequences were retained. Then, the non-redundant protein sequences were entered in the Pfam website (<http://pfam.xfam.org/search#tabview=tab1>) (accessed on 11 November 2021) for domain confirmation. The non-typical MYB domains and short sequences were removed manually, delivering a list of 190 MYB proteins that were identified and renamed finally using the TBtools. The distribution of the MYB gene on the 12 chromosomes of rice was visualized by TBtools based on chromosome location information. The MYB protein list derived from the MSU database was loaded into ExPASy ([https://web.expasy.org/protparam/?tdsourcetag=s\\_pcqq\\_aiomsg](https://web.expasy.org/protparam/?tdsourcetag=s_pcqq_aiomsg)) (accessed on 11 November 2021) [51] to obtain the respective physicochemical properties, including molecular weight (MV), numbers of amino acids (N), isoelectric point (pI), grand average of hydropathicity (GRAVY), and instability index.

##### 4.2. Classification and Phylogenetic Analysis of MYB Family Members

The Arabidopsis MYB transcription factors were downloaded from TAIR (<https://www.arabidopsis.org/tools/index.jsp>) (accessed on 11 August 2021). Clustal Omega [52] was used to align the MYB proteins derived from Arabidopsis and rice. The MYB protein family phylogenetic tree was constructed by the neighbor-joining method of Mega-X [53] with a bootstrap value set to 1000. Subsequently, the generated dendrogram was polished by the Evolview (<https://evolgenius.info/evolview-v2/>) (accessed on 13 July 2022).

##### 4.3. Structural Analysis of *Os2R\_MYB* Genes

To identify the introns and exons of the rice 2R-MYB gene sequences, the GSDS platform (<http://gsds.gao-lab.org/>) (accessed on 13 August 2021) [54] was used and were further visualized with TBtools.

##### 4.4. Analysis of Stress-Related Cis-Elements in *Os2R\_MYB* Promoter Regions

The 2000 bp DNA sequences upstream of the 2R-MYB TF corresponding to their promoters were extracted from the RAP-DB database (<https://rapdb.dna.affrc.go.jp/tools/>

dump) (accessed on 18 November 2021) [49,55]. Stress response cis-elements in promoter sequences were analyzed using the PlantCARE database (<http://bioinformatics.psb.ugent.be/webtools/plantcare/html/>) (accessed on 18 November 2021) [56].

#### 4.5. Analysis of the Relative Expression Level of *Os2R\_MYBs* in Different Tissues and Growth Stages

The expression data of the rice 2R-MYB genes from various tissues and growth stages were downloaded from RiceXPro (<https://ricexpro.dna.affrc.go.jp/GGEP/index.php>) (accessed on 25 November 2021). A total of 10 samples were collected, including leaf blades, leaf sheaths, roots, stems, inflorescence, anthers, pistils, ovaries, embryos, and endosperm. The profiles of *Os2R\_MYB* genes were plotted by TBtools and normalized by lgN, and the expression levels were presented with different colors.

#### 4.6. Abiotic Stress Treatment of Rice

Nipponbare cultivar was used as the experimental material. Rice seeds were disinfected with 2.5% NaClO and washed with sterile water. After three days on a wet filter paper at 37 °C, the rooted seeds were transferred to hydroponic boxes. At the two-leaf stage, the seedlings were treated either with 20% 6000 PEG or 50 µmol/L CdCl<sub>2</sub> for 24 h to simulate the growth of rice seedlings under environmental stress such as drought and cadmium. Rice leaves after stress treatments were collected and stored at −80 °C for RNA extraction.

#### 4.7. Protein–Protein Interaction Network Analysis

The 2R-MYB-type protein list derived from the MSU database was loaded into STRING online website ([https://string-db.org/cgi/input?sessionId=byDrTWHdq5tp&input\\_page\\_active\\_form=multiple\\_identifiers](https://string-db.org/cgi/input?sessionId=byDrTWHdq5tp&input_page_active_form=multiple_identifiers)) (accessed on 15 July 2022) to predict putative interacting proteins [57]. The protein–protein interaction network was generated and decorated by Cytoscape software.

#### 4.8. Analysis of *Os2R\_MYBs* Gene Expression in Rice under Abiotic Stress

Based on the observed variation in gene expression, 20 MYB genes were selected to detect the changes in transcription levels under the selected stress inducers by qRT-PCR. The primers were designed by Beacon Designer 7.9, and the sequence information of all primers is shown in Table S7. Total RNA from rice leaves was extracted by Easy Plant RNA Extraction Kit, and the first-strand cDNA was synthesized using FastKing RT Kit. Then, cDNA samples were diluted to 200 ng/µL to serve as templates for qRT-PCR. The reaction was carried out using UltraSYBR Green Master Mixture in a Bio-Rad CFX system. Reaction conditions: 4 min at 95 °C, followed by 39 cycles of 15 s at 95 °C, 15 s at 58 °C, and 25 s at 72 °C. The cultivar Nipponbare was used as the control, while the rice *Actin1* and *GAPDH* were used as reference genes. The relative expression levels of each gene were calculated by the 2<sup>−ΔΔCt</sup> method. All reactions were set up in triplicates. Standard deviation (SD) was evaluated from three replicates.

## 5. Conclusions

A total of 190 MYB proteins were identified from rice genome data, including 99 2R-MYB-type proteins. The genes encoding these proteins were unevenly distributed across 12 chromosomes of rice. There were 10 duplicate gene pairs. *Os2R\_MYB* protein was classified into five subgroups according to its sequence characteristics, and the sequence characteristics of these proteins were further verified by multiple sequence alignment. We also dissected the structure of the genes encoding these proteins, and the result showed that most *Os2R\_MYB* genes contained two introns (59, 59.6%). Moreover, their cis-elements in the upstream 2000 bp promoter region were analyzed, suggesting their involvement in rice hormone response or abiotic stress response. The *Os2R\_MYB* proteins may participate in biological signal transmission and gene expression regulation by protein–protein interaction

network analysis. Subsequent studies can further clarify the function of the *Os2R\_MYB* protein by studying a specific *Os2R\_MYB* protein–protein interaction proteins and co-expression genes. The differential expression of 20 *Os2R\_MYB* genes under 6000PEG and CdCl<sub>2</sub> treatments showed that some *Os2R\_MYB* genes responded to PEG and/or CdCl<sub>2</sub> stresses. This study can serve as a basis for the identification and functional study of the MYB TF family members of rice and help to illustrate the molecular mechanism of rice response to abiotic stress, which is expected to breed new rice varieties with strong resistance to abiotic stress.

**Supplementary Materials:** The following supporting information can be downloaded at: <https://www.mdpi.com/article/10.3390/plants11151928/s1>, Figure S1: Multiple sequence alignments of *Os2R\_MYB* proteins; Figure S2: Relative gene expression of 20 *Os2R\_MYB*s under PEG and CdCl<sub>2</sub> stress treatments; Table S1: Physicochemical Properties of the 2R-MYB Type Proteins; Table S2: Statistical Analysis of the Intron Numbers of 99 *Os2R\_MYB* Genes; Table S3: R2R3\_MYB proteins interaction network construct; Table S4: R2R3\_MYB proteins interaction network protein annotations; Table S5: R2R3\_MYB proteins interaction network functional annotations; Table S6: Statistical Analysis of *Os2R\_MYB* Genes Expression Level under the PEG and CdCl<sub>2</sub> Stresses; Table S7: Quantitative RT-PCR Primers.

**Author Contributions:** Conceptualization, D.X. and X.Z. (Xian Zhang); methodology, L.K., Y.T., Q.C. and X.Z. (Xiaoqin Zhang); software, L.K., Q.T. and Y.F.; validation, H.W., Y.F. and X.Z. (Xiaoqin Zhang); formal analysis, L.K., Y.T. and Q.C.; resources, D.X., H.W. and X.Z. (Xian Zhang); data curation, Y.F., H.W. and D.X.; writing—original draft preparation, L.K., Y.T. and X.Z. (Xian Zhang); writing—review and editing, D.X. and X.Z. (Xian Zhang). All authors have read and agreed to the published version of the manuscript.

**Funding:** This research was funded by Zhejiang Provincial Natural Science Foundation of China (LY20C140003; LY19C130001; LY21C130007), and Hainan Yazhou Bay Seed Laboratory (B21HJ0220).

**Institutional Review Board Statement:** Not applicable.

**Informed Consent Statement:** Not applicable.

**Data Availability Statement:** Not applicable.

**Conflicts of Interest:** The authors declare no conflict of interest.

## References

1. Riechmann, J.L.; Heard, J.; Martin, G.; Reuber, L.; Jiang, C.; Keddie, J.; Adam, L.; Pineda, O.; Ratcliffe, O.J.; Samaha, R.R.; et al. Arabidopsis transcription factors: Genome-wide comparative analysis among eukaryotes. *Science* **2000**, *290*, 2105–2110. [[CrossRef](#)] [[PubMed](#)]
2. Kanei-Ishii, C.; Sarai, A.; Sawazaki, T.; Nakagoshi, H.; He, D.N.; Ogata, K.; Nishimura, Y.; Ishii, S. The tryptophan cluster: A hypothetical structure of the DNA-binding domain of the myb protooncogene product. *J. Biol. Chem.* **1990**, *265*, 19990–19995. [[CrossRef](#)]
3. Jia, L.; Clegg, M.T.; Jiang, T. Evolutionary dynamics of the DNA-binding domains in putative R2R3-MYB genes identified from rice subspecies indica and japonica genomes. *Plant Physiol.* **2004**, *134*, 575–585. [[CrossRef](#)] [[PubMed](#)]
4. Dubos, C.; Stracke, R.; Grotewold, E.; Weisshaar, B.; Martin, C.; Lepiniec, L. MYB transcription factors in Arabidopsis. *Trends Plant Sci.* **2010**, *15*, 573–581. [[CrossRef](#)]
5. Martin, C.; Paz-Ares, J. MYB transcription factors in plants. *Trends Genet.* **1997**, *13*, 67–73. [[CrossRef](#)]
6. Paz-Ares, J.; Ghosal, D.; Wienand, U.; Peterson, P.A.; Saedler, H. The regulatory c1 locus of *Zea mays* encodes a protein with homology to myb proto-oncogene products and with structural similarities to transcriptional activators. *EMBO J.* **1987**, *6*, 3553–3558. [[CrossRef](#)]
7. Tamagnone, L.; Merida, A.; Parr, A.; Mackay, S.; Culianez-Macia, F.A.; Roberts, K.; Martin, C. The AmMYB308 and AmMYB330 transcription factors from antirrhinum regulate phenylpropanoid and lignin biosynthesis in transgenic tobacco. *Plant Cell* **1998**, *10*, 135–154. [[CrossRef](#)]
8. Pandey, A.; Misra, P.; Khan, M.P.; Swarnkar, G.; Tewari, M.C.; Bhambhani, S.; Trivedi, R.; Chattopadhyay, N.; Trivedi, P.K. Co-expression of Arabidopsis transcription factor, AtMYB12, and soybean isoflavone synthase, GmIFS1, genes in tobacco leads to enhanced biosynthesis of isoflavones and flavonols resulting in osteoprotective activity. *Plant Biotechnol. J.* **2014**, *12*, 69–80. [[CrossRef](#)]

9. Castillejo, C.; Waurich, V.; Wagner, H.; Ramos, R.; Oiza, N.; Muñoz, P.; Triviño, J.C.; Caruana, J.; Liu, Z.; Cobo, N.; et al. Allelic Variation of MYB10 Is the Major Force Controlling Natural Variation in Skin and Flesh Color in Strawberry (*Fragaria* spp.) Fruit. *Plant Cell* **2020**, *32*, 3723–3749. [[CrossRef](#)]
10. Wang, L.; Lu, W.; Ran, L.; Dou, L.; Yao, S.; Hu, J.; Fan, D.; Li, C.; Luo, K. R2R3-MYB transcription factor MYB6 promotes anthocyanin and proanthocyanidin biosynthesis but inhibits secondary cell wall formation in *Populus tomentosa*. *Plant J.* **2019**, *99*, 733–751. [[CrossRef](#)]
11. Dai, X.; Xu, Y.; Ma, Q.; Xu, W.; Wang, T.; Xue, Y.; Chong, K. Overexpression of an R1R2R3 MYB gene, OsMYB3R-2, increases tolerance to freezing, drought, and salt stress in transgenic Arabidopsis. *Plant Physiol.* **2007**, *143*, 1739–1751. [[CrossRef](#)]
12. Xing, C.; Liu, Y.; Zhao, L.; Zhang, S.; Huang, X. A novel MYB transcription factor regulates ascorbic acid synthesis and affects cold tolerance. *Plant Cell Environ.* **2019**, *42*, 832–845. [[CrossRef](#)]
13. Agarwal, P.; Mitra, M.; Banerjee, S.; Roy, S. MYB4 transcription factor, a member of R2R3-subfamily of MYB domain protein, regulates cadmium tolerance via enhanced protection against oxidative damage and increases expression of PCS1 and MT1C in Arabidopsis. *Plant Sci.* **2020**, *297*, 110501. [[CrossRef](#)]
14. Xiang, X.J.; Sun, L.P.; Yu, P.; Yang, Z.F.; Zhang, P.P.; Zhang, Y.X.; Wu, W.X.; Chen, D.B.; Zhan, X.D.; Khan, R.M.; et al. The MYB transcription factor Baymax1 plays a critical role in rice male fertility. *Theor. Appl. Genet.* **2021**, *134*, 453–471. [[CrossRef](#)]
15. Wang, D.; Li, J.; Sun, L.; Hu, Y.; Yu, J.; Wang, C.; Zhang, F.; Hou, H.; Liang, W.; Zhang, D. Two rice MYB transcription factors maintain male fertility in response to photoperiod by modulating sugar partitioning. *New Phytol.* **2021**, *231*, 1612–1629. [[CrossRef](#)]
16. Ren, D.; Cui, Y.; Hu, H.; Xu, Q.; Rao, Y.; Yu, X.; Zhang, Y.; Wang, Y.; Peng, Y.; Zeng, D.; et al. AH2 encodes a MYB domain protein that determines hull fate and affects grain yield and quality in rice. *Plant J.* **2019**, *100*, 813–824. [[CrossRef](#)]
17. Li, Y.F.; Zeng, X.Q.; Li, Y.; Wang, L.; Zhuang, H.; Wang, Y.; Tang, J.; Wang, H.L.; Xiong, M.; Yang, F.Y.; et al. MULTI-FLORET SPIKELET 2, a MYB Transcription Factor, Determines Spikelet Meristem Fate and Floral Organ Identity in Rice. *Plant Physiol.* **2020**, *184*, 988–1003. [[CrossRef](#)]
18. Zhu, N.; Cheng, S.; Liu, X.; Du, H.; Dai, M.; Zhou, D.X.; Yang, W.; Zhao, Y. The R2R3-type MYB gene OsMYB91 has a function in coordinating plant growth and salt stress tolerance in rice. *Plant Sci.* **2015**, *236*, 146–156. [[CrossRef](#)]
19. Yin, X.; Cui, Y.; Wang, M.; Xia, X. Overexpression of a novel MYB-related transcription factor, OsMYBR1, confers improved drought tolerance and decreased ABA sensitivity in rice. *Biochem. Biophys. Res. Commun.* **2017**, *490*, 1355–1361. [[CrossRef](#)]
20. Su, C.F.; Wang, Y.C.; Hsieh, T.H.; Lu, C.A.; Tseng, T.H.; Yu, S.M. A novel MYBS3-dependent pathway confers cold tolerance in rice. *Plant Physiol.* **2010**, *153*, 145–158. [[CrossRef](#)]
21. Adil, M.F.; Sehar, S.; Chen, S.; Lwalaba, J.L.W.; Jilani, G.; Chen, Z.H.; Shamsi, I.H. Stress signaling convergence and nutrient crosstalk determine zinc-mediated amelioration against cadmium toxicity in rice. *Ecotoxicol. Environ. Saf.* **2021**, *230*, 113128. [[CrossRef](#)]
22. Smita, S.; Katiyar, A.; Chinnusamy, V.; Pandey, D.M.; Bansal, K.C. Transcriptional Regulatory Network Analysis of MYB Transcription Factor Family Genes in Rice. *Front. Plant Sci.* **2015**, *6*, 1157. [[CrossRef](#)]
23. Chaney, R.L.; Reeves, P.G.; Ryan, J.A.; Simmons, R.W.; Welch, R.M.; Angle, J.S. An improved understanding of soil Cd risk to humans and low cost methods to phytoextract Cd from contaminated soils to prevent soil Cd risks. *BioMetals* **2004**, *17*, 549–553. [[CrossRef](#)]
24. Feng, Q.; Zhang, Y.; Hao, P.; Wang, S.; Fu, G.; Huang, Y.; Li, Y.; Zhu, J.; Liu, Y.; Hu, X.; et al. Sequence and analysis of rice chromosome 4. *Nature* **2002**, *420*, 316–320. [[CrossRef](#)]
25. Yu, J.; Hu, S.; Wang, J.; Wong, G.K.; Li, S.; Liu, B.; Deng, Y.; Dai, L.; Zhou, Y.; Zhang, X.; et al. A draft sequence of the rice genome (*Oryza sativa* L. ssp. indica). *Science* **2002**, *296*, 79–92. [[CrossRef](#)]
26. Katiyar, A.; Smita, S.; Lenka, S.K.; Rajwanshi, R.; Chinnusamy, V.; Bansal, K.C. Genome-wide classification and expression analysis of MYB transcription factor families in rice and Arabidopsis. *BMC Genom.* **2012**, *13*, 544. [[CrossRef](#)]
27. Ogata, K.; Kanei-Ishii, C.; Sasaki, M.; Hatanaka, H.; Nagadoi, A.; Enari, M.; Nakamura, H.; Nishimura, Y.; Ishii, S.; Sarai, A. The cavity in the hydrophobic core of Myb DNA-binding domain is reserved for DNA recognition and trans-activation. *Nat. Struct. Biol.* **1996**, *3*, 178–187. [[CrossRef](#)]
28. Wakasa, Y.; Yasuda, H.; Oono, Y.; Kawakatsu, T.; Hirose, S.; Takahashi, H.; Hayashi, S.; Yang, L.; Takaiwa, F. Expression of ER quality control-related genes in response to changes in BiP1 levels in developing rice endosperm. *Plant J.* **2011**, *65*, 675–689. [[CrossRef](#)]
29. Gu, M.; Zhang, J.; Li, H.; Meng, D.; Li, R.; Dai, X.; Wang, S.; Liu, W.; Qu, H.; Xu, G. Maintenance of phosphate homeostasis and root development are coordinately regulated by MYB1, an R2R3-type MYB transcription factor in rice. *J. Exp. Bot.* **2017**, *68*, 3603–3615. [[CrossRef](#)]
30. Yang, W.T.; Baek, D.; Yun, D.J.; Hwang, W.H.; Park, D.S.; Nam, M.H.; Chung, E.S.; Chung, Y.S.; Yi, Y.B.; Kim, D.H. Overexpression of OsMYB4P, an R2R3-type MYB transcriptional activator, increases phosphate acquisition in rice. *Plant Physiol. Biochem.* **2014**, *80*, 259–267. [[CrossRef](#)]
31. Yang, A.; Dai, X.; Zhang, W.H. A R2R3-type MYB gene, OsMYB2, is involved in salt, cold, and dehydration tolerance in rice. *J. Exp. Bot.* **2012**, *63*, 2541–2556. [[CrossRef](#)] [[PubMed](#)]
32. Feller, A.; Machemer, K.; Braun, E.L.; Grotewold, E. Evolutionary and comparative analysis of MYB and bHLH plant transcription factors. *Plant J.* **2011**, *66*, 94–116. [[CrossRef](#)] [[PubMed](#)]

33. Wang, S.; Li, E.; Porth, I.; Chen, J.G.; Mansfield, S.D.; Douglas, C.J. Regulation of secondary cell wall biosynthesis by poplar R2R3 MYB transcription factor PtrMYB152 in Arabidopsis. *Sci. Rep.* **2014**, *4*, 5054. [[CrossRef](#)] [[PubMed](#)]
34. Yang, B.; Song, Z.; Li, C.; Jiang, J.; Zhou, Y.; Wang, R.; Wang, Q.; Ni, C.; Liang, Q.; Chen, H.; et al. RSM1, an Arabidopsis MYB protein, interacts with HY5/HYH to modulate seed germination and seedling development in response to abscisic acid and salinity. *PLoS Genet.* **2018**, *14*, e1007839. [[CrossRef](#)]
35. Ma, D.; Reichelt, M.; Yoshida, K.; Gershenzon, J.; Constabel, C.P. Two R2R3-MYB proteins are broad repressors of flavonoid and phenylpropanoid metabolism in poplar. *Plant J.* **2018**, *96*, 949–965. [[CrossRef](#)]
36. Bian, S.; Jin, D.; Sun, G.; Shan, B.; Zhou, H.; Wang, J.; Zhai, L.; Li, X. Characterization of the soybean R2R3-MYB transcription factor GmMYB81 and its functional roles under abiotic stresses. *Gene* **2020**, *753*, 144803. [[CrossRef](#)]
37. Li, T.; Zhang, X.-Y.; Huang, Y.; Xu, Z.-S.; Wang, F.; Xiong, A.-S. An R2R3-MYB transcription factor, SIMYB28, involved in the regulation of TYLCV infection in tomato. *Sci. Hort.* **2018**, *237*, 192–200. [[CrossRef](#)]
38. Li, Q.; Lu, L.; Liu, H.; Bai, X.; Zhou, X.; Wu, B.; Yuan, M.; Yang, L.; Xing, Y. A minor QTL, SG3, encoding an R2R3-MYB protein, negatively controls grain length in rice. *Theor. Appl. Genet.* **2020**, *133*, 2387–2399. [[CrossRef](#)]
39. Hong, L.; Niu, F.; Lin, Y.; Wang, S.; Chen, L.; Jiang, L. MYB106 is a negative regulator and a substrate for CRL3(BPM) E3 ligase in regulating flowering time in *Arabidopsis thaliana*. *J. Integr. Plant Biol.* **2021**, *63*, 1104–1119. [[CrossRef](#)]
40. Fu, S.; Yun, T.; Ma, D.; Zheng, B.; Jiang, D.; He, Y. Thylakoid Transit Peptide Is Related to the Expression and Localization of NdhB Subunits in Soybean. *Phyton Int. J. Exp. Bot.* **2021**, *90*, 99–110. [[CrossRef](#)]
41. Mandaokar, A.; Thines, B.; Shin, B.; Lange, B.M.; Choi, G.; Koo, Y.J.; Yoo, Y.J.; Choi, Y.D.; Choi, G.; Browse, J. Transcriptional regulators of stamen development in Arabidopsis identified by transcriptional profiling. *Plant J.* **2006**, *46*, 984–1008. [[CrossRef](#)]
42. Lu, J.Y.; Xiong, S.X.; Yin, W.; Teng, X.D.; Lou, Y.; Zhu, J.; Zhang, C.; Gu, J.N.; Wilson, Z.A.; Yang, Z.N. MS1, a direct target of MS188, regulates the expression of key sporophytic pollen coat protein genes in Arabidopsis. *J. Exp. Bot.* **2020**, *71*, 4877–4889. [[CrossRef](#)]
43. Han, Y.; Zhou, S.D.; Fan, J.J.; Zhou, L.; Shi, Q.S.; Zhang, Y.F.; Liu, X.L.; Chen, X.; Zhu, J.; Yang, Z.N. OsMS188 Is a Key Regulator of Tapetum Development and Sporopollenin Synthesis in Rice. *Rice* **2021**, *14*, 4. [[CrossRef](#)]
44. Gocal, G.F.; Sheldon, C.C.; Gubler, F.; Moritz, T.; Bagnall, D.J.; MacMillan, C.P.; Li, S.F.; Parish, R.W.; Dennis, E.S.; Weigel, D.; et al. GAMYB-like genes, flowering, and gibberellin signaling in Arabidopsis. *Plant Physiol.* **2001**, *127*, 1682–1693. [[CrossRef](#)]
45. Shumayla; Mendu, V.; Singh, K.; Upadhyay, S.K. Insight into the Roles of Proline-Rich Extensin-like Receptor Protein Kinases of Bread Wheat (*Triticum aestivum* L.). *Life* **2022**, *12*, 941. [[CrossRef](#)]
46. Rathour, M.; Shumayla; Alok, A.; Upadhyay, S.K. Investigation of Roles of TaTALE Genes during Development and Stress Response in Bread Wheat. *Plants* **2022**, *11*, 587. [[CrossRef](#)]
47. Huang, D.; Sun, Y.; Ma, Z.; Ke, M.; Cui, Y.; Chen, Z.; Chen, C.; Ji, C.; Tran, T.M.; Yang, L. Salicylic acid-mediated plasmodesmal closure via Remorin-dependent lipid organization. *Proc. Natl. Acad. Sci. USA* **2019**, *116*, 21274–21284. [[CrossRef](#)]
48. Yang, Y.; Xie, X.; Tao, S.; Zhou, K.; Yu, Y.; Lu, Z.; Jiang, D.; Zheng, B.; He, Y. Plasmodesmata play a critical role in promoting the germination of floral buds in *Ilex verticillata*. *Plant Growth Regul.* **2020**, *91*, 349–357. [[CrossRef](#)]
49. Kawahara, Y.; de la Bastide, M.; Hamilton, J.P.; Kanamori, H.; McCombie, W.R.; Ouyang, S.; Schwartz, D.C.; Tanaka, T.; Wu, J.; Zhou, S.; et al. Improvement of the *Oryza sativa* Nipponbare reference genome using next generation sequence and optical map data. *Rice* **2013**, *6*, 4. [[CrossRef](#)]
50. Huang, Y.; Niu, B.; Gao, Y.; Fu, L.; Li, W. CD-HIT Suite: A web server for clustering and comparing biological sequences. *Bioinformatics* **2010**, *26*, 680–682. [[CrossRef](#)]
51. Wilkins, M.R.; Gasteiger, E.; Bairoch, A.; Sanchez, J.C.; Williams, K.L.; Appel, R.D.; Hochstrasser, D.F. Protein identification and analysis tools in the ExPASy server. *Methods Mol. Biol.* **1999**, *112*, 531–552. [[CrossRef](#)]
52. Sievers, F.; Higgins, D.G. Clustal omega. *Curr. Protoc. Bioinform.* **2014**, *48*, 3.13.11–3.13.16. [[CrossRef](#)]
53. Kumar, S.; Stecher, G.; Tamura, K. MEGA7: Molecular Evolutionary Genetics Analysis Version 7.0 for Bigger Datasets. *Mol. Biol. Evol.* **2016**, *33*, 1870–1874. [[CrossRef](#)]
54. Hu, B.; Jin, J.; Guo, A.Y.; Zhang, H.; Luo, J.; Gao, G. GSDS 2.0: An upgraded gene feature visualization server. *Bioinformatics* **2015**, *31*, 1296–1297. [[CrossRef](#)]
55. Sakai, H.; Lee, S.S.; Tanaka, T.; Numa, H.; Kim, J.; Kawahara, Y.; Wakimoto, H.; Yang, C.C.; Iwamoto, M.; Abe, T.; et al. Rice Annotation Project Database (RAP-DB): An integrative and interactive database for rice genomics. *Plant Cell Physiol.* **2013**, *54*, e6. [[CrossRef](#)]
56. Lescot, M.; Déhais, P.; Thijs, G.; Marchal, K.; Moreau, Y.; Van de Peer, Y.; Rouzé, P.; Rombauts, S. PlantCARE, a database of plant cis-acting regulatory elements and a portal to tools for in silico analysis of promoter sequences. *Nucleic Acids Res.* **2002**, *30*, 325–327. [[CrossRef](#)]
57. Szklarczyk, D.; Gable, A.L.; Lyon, D.; Junge, A.; Wyder, S.; Huerta-Cepas, J.; Simonovic, M.; Doncheva, N.T.; Morris, J.H.; Bork, P.; et al. STRING v11: Protein-protein association networks with increased coverage, supporting functional discovery in genome-wide experimental datasets. *Nucleic Acids Res.* **2019**, *47*, D607–D613. [[CrossRef](#)]