

Deletion of a putative HDA-1 binding site in the *hlh-2* promoter eliminates expression in *C. elegans* dorsal uterine cells

Taylor N Medwig-Kinney^{1*}, Nicholas J Palmisano^{1*} and David Q Matus^{1§}

¹Stony Brook University

[§]To whom correspondence should be addressed: david.matus@stonybrook.edu

*These authors contributed equally.

Abstract

The helix-loop-helix transcription factor *hlh-2* (E/Daughterless) has been shown to play an important role in regulating cell fate patterning, cell cycle, and basement membrane invasion in the context of the development of the *C. elegans* somatic gonad. Here, using CRISPR/Cas9 genome engineering, we generated a new *hlh-2* allele (*hlh-2*(Δ -1303-702)) in the endogenous, GFP-tagged *hlh-2* locus. This allele represents a deletion of a 601 bp region in the *hlh-2* promoter that contains a putative binding site of the histone deacetylase *hda-1* (HDAC) according to publicly available ChIP-sequencing data. Strikingly, we find that HLH-2 expression is virtually absent in the dorsal uterine cells of *hlh-2*(Δ -1303-702) animals compared to wild type controls. Levels of HLH-2 in the anchor cell and ventral uterine cells are only modestly reduced in the mutant; however, this does not seem to be functionally significant based on the lack of relevant phenotypes and expression levels of a downstream gene, NHR-67 (TLX/Tailless/NR2E1), in these cells. Taken together, these results support growing evidence that HDACs can potentially positively regulate transcription and provide a new reagent for studying *hlh-2* regulation.

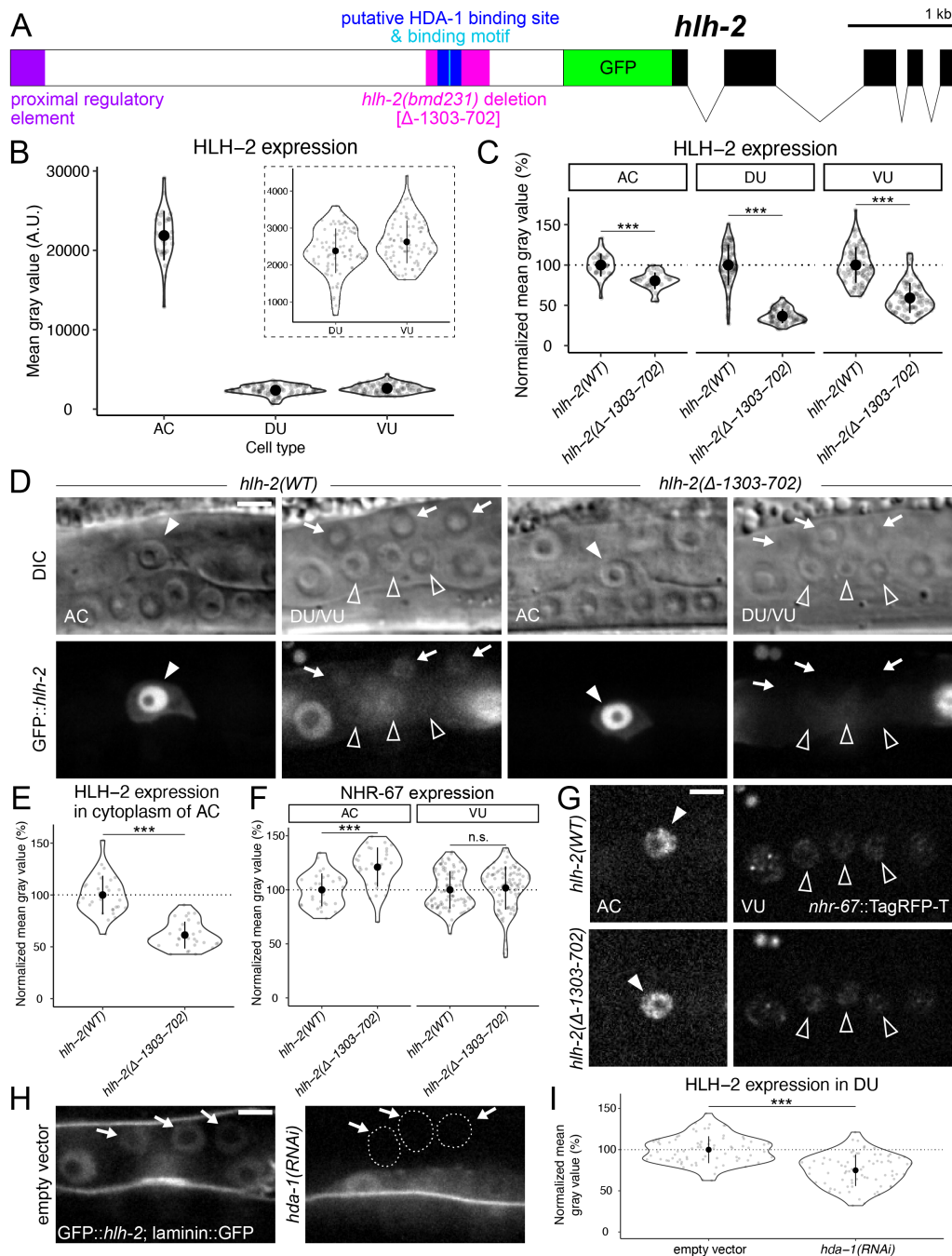


Figure 1. Characterization of new allele deleting putative HDA-1 binding site from the *hlh-2* promoter: (A) Schematic of the endogenous GFP::*hlh-2* locus and promoter region, annotated with a previously characterized proximal regulatory element, putative HDA-1 binding site (based on published ChIP-sequencing data) and binding motif, and the genomic region deleted in the *hlh-2(bmd231)* mutant. (B) Nuclear expression of wild type (wt) GFP::*hlh-2* in the anchor cell (AC), dorsal uterine (DU) cells, and ventral uterine (VU) cells. (C-D) Nuclear expression of GFP::*hlh-2* in the AC (solid arrowhead), DU (arrows), and VU (unfilled arrowheads) cells of *hlh-2(WT)* and *hlh-2(Δ-1303-702)* animals. (D-E) Cytoplasmic expression of HLH-2 in the AC of *hlh-2(WT)* and *hlh-2(Δ-1303-702)* animals. (F-G) Expression of *nhr-67::TagRFP-T* in *hlh-2(WT)* and *hlh-2(Δ-1303-702)* animals. (H-I) Levels of GFP::*hlh-2* following depletion of *hda-1* via RNA interference compared to empty vector control in the DU (nuclei outlined *hda-1(RNAi)* micrograph). Statistical significance determined through using an unpaired two sample t-test, with Welch's correction (* $p \leq 0.05$; *** $p \leq 0.001$; n.s., not significant). Scale bars: 5 μ m.

Description

During *C. elegans* development, two cells, Z1 and Z4, give rise to the entire somatic gonad, including populations of dorsal uterine (DU) and ventral uterine (VU) cells, as well as the postmitotic anchor cell (AC), which invades the underlying basement membrane during uterine-vulval morphogenesis (Kimble & Hirsh, 1979; Sherwood & Sternberg, 2003). The helix-loop-helix transcription factor *hlh-2* (E/Daughterless) is expressed in these three cell types, among

others, and is particularly enriched in the AC following post-transcriptional down-regulation of HLH-2 in the VU through dimerization-driven degradation (Karp & Greenwald, 2003; Sallee & Greenwald, 2015). At the L2 stage, HLH-2 regulates the Notch signaling event that specifies AC and VU fates, with its initial onset predicting the lineage ultimately giving rise to the presumptive VU (Karp & Greenwald, 2004; Attner *et al.*, 2019). Following AC/VU specification, HLH-2 functions to regulate cell cycle arrest and invasion of the AC (Medwig-Kinney *et al.*, 2020; Schindler & Sherwood, 2011). We and others have shown that HLH-2 does so by regulating expression of the nuclear hormone receptor and transcription factor NHR-67 (Tailless/TLX/NR2E1), and likely cell-cycle independent, pro-invasive targets as well (Bodofsky *et al.*, 2018; Medwig-Kinney *et al.*, 2020).

In addition to *hlh-2* and *nhr-67*, the histone deacetylase (HDAC) *hda-1* was also identified as a regulator of AC invasion through a reverse genetic screen (Matus *et al.*, 2010). It was later shown that *hda-1* function is necessary for AC invasive fate differentiation and plays a role in the pro-invasive pathway encompassing NHR-67 (Matus *et al.*, 2015). In order to further elucidate the mechanism by which HDA-1 regulates AC invasion, we sought to test whether HDA-1 regulated expression of *hlh-2*. Previous studies of the *hlh-2* promoter identified a proximal regulatory element (*hlh-2*(*prox*)) that confers expression in the AC and VU cells specifically (Figure 1A) (Sallee & Greenwald, 2015). Approximately 3.3 kb downstream of this *hlh-2*(*prox*) element is an HDA-1 binding motif that lies within a putative HDA-1 binding site based on ChIP-sequencing data generated by the modENCODE Project (Figure 1A) (Shao *et al.*, 2020; Celniker *et al.*, 2009). Using CRISPR/Cas9 genome engineering, we edited the endogenous *hlh-2* locus to introduce a deletion mutation (*hlh-2*(*bmd231*)) from 1303 to 702 base pairs (bp) upstream of the GFP start codon, hereafter referred to as *hlh-2*(Δ -1303-702) (Figure 1A).

Consistent with findings using immunostaining, we find that endogenous GFP::*hlh-2* expression is normally enriched in the AC compared to the VU and DU (Karp & Greenwald, 2003) (Figure 1B). When compared to wild type, the *hlh-2*(Δ -1303-702) mutant showed a modest but statistically significant reduction in HLH-2 expression in the AC and VU cells (Figure 1C-D). The endogenous GFP::*hlh-2* allele paired with high resolution microscopy allowed us to detect subtle regulation of HLH-2 expression by *hda-1* in the AC and VU cells that was not previously reported using a transgenic reporter (Ranawade *et al.*, 2013). DU expression, however, was virtually eliminated in the mutant when accounting for camera-derived background noise (Figure 1C-D). We also observed that cytoplasmic expression of HLH-2 in the AC was modestly reduced in the mutant as well (Figure D-E). However, the alterations in HLH-2 expression in the AC and VU do not seem to be functionally significant, as expression of a NHR-67, a downstream target of HLH-2 in the cell cycle dependent pro-invasive gene regulatory network (Medwig-Kinney *et al.*, 2020), was not significantly reduced (Figure 1F-G). Furthermore, no defects in AC specification or invasion were observed in any of the strains containing the *hlh-2*(Δ -1303-702) allele ($n > 50$) based on both the presence of a single AC and an underlying gap in the basement membrane, in all animals examined (visualized by *cdh-3p*::mCherry::moeABD and laminin::GFP, respectively). RNAi-induced knockdown of *hda-1* resulted in reduced levels of HLH-2 in the DU, providing further evidence of this regulatory interaction (Figure 1H-I).

In summary, here we generate and characterize a new mutant allele of *hlh-2*. Deletion of the genomic region containing a putative HDA-1 binding site from the *hlh-2* promoter appears to primarily affect expression in the DU cells and is recapitulated through RNAi-induced knockdown of *hda-1*. Although HDA-1 is traditionally thought of as a repressor of transcription through chromatin deacetylation (Kadosh & Struhl, 1997; Kadosh & Struhl, 1998; Rundlett *et al.*, 1998; Gui *et al.*, 2003), this data adds to the growing evidence that HDACs can also function as activators of transcription (Vidal & Gaber, 1991; De Nadal *et al.*, 2004; Wang *et al.*, 2014). Whether there is a functional consequence of *hlh-2* depletion in the DU cells is currently unknown. It is our hope that this reagent will be useful to the *C. elegans* community to further study the roles of *hda-1* and *hlh-2*.

Methods

[Request a detailed protocol](#)

Strain maintenance:

Animals were reared under standard conditions and cultured at 25°C (Brenner, 1974). Animals were synchronized through alkaline hypochlorite treatment of gravid adults to isolate eggs (Porta-de-la-Riva *et al.*, 2012). The RNAi clone targeting *hda-1* was generated by cloning 923 bp of cDNA (available from wormbase.org; Harris *et al.*, 2020) into the highly efficient T444T RNAi feeding vector (Sturm *et al.*, 2018). RNAi experiments were performed by feeding synchronized L1s following hypochlorite treatment.

CRISPR/Cas9 injections:

In order to generate the deletion mutation in the *hlh-2*(Δ -1303-702) allele, Cas9 protein injections were performed as previously described (Paix *et al.*, 2014; Ghanta *et al.*, 2020) with minor modifications to the published protocols. In short, a 200 bp ssODN donor repair ultramer for *hlh-2* (IDT) was constructed. To facilitate easy screening of our edit, a PvuI restriction site was engineered into the ssODN repair oligo as previously described (Paix *et al.*, 2014), flanked on each side by 94 bp of sequence homologous to the region surrounding the putative HDA-1 binding site. Single guide RNAs for

hlh-2 and *dpy-10* (co-CRISPR marker) were purchased from CRISPRvolution by Synthego (Synthego Corporation). The Cas9/sgRNA ribonucleoprotein complex was formed by incubating 30 pmols of Cas9 NLS protein (California Institute for Quantitative Biosciences at UC Berkeley (QB3-Berkeley)) with 23.75 pmols of each *hlh-2* gRNA, and 47.5 pmols of *dpy-10* sgRNA for 15 minutes at 37°C. The *hlh-2* and *dpy-10* ssODN donor repair ultramers (IDT) were then added to the reaction at a final concentration of 2.2 μg.

TagRFP-T::AID was inserted into the C-terminus of the endogenous *nhr-67* locus via CRISPR/Cas9 mediated genome engineering using the self-excising cassette method (Dickinson *et al.*, 2013; Dickinson *et al.*, 2015). The sgRNA targeting sequence in pDD122 was replaced with the sgRNA targeting the C-terminus of *nhr-67* using Gibson cloning (Dickinson *et al.*, 2013). The repair template for *nhr-67* was generated by cloning homology arms, synthesized by Twist Biosciences (left homology arm) and by PCR using genomic DNA as a template (right homology arm), into pTNM063 (TagRFP-T::AID repair template) (Ashley *et al.*, 2021).

Live cell imaging:

Micrographs were collected on a Hamamatsu Orca EM-CCD camera mounted on an upright Zeiss AxioImager A2 with a Borealis-modified CSU10 Yokagawa spinning disk scan head (Nobska Imaging) using 488 nm and 561 nm Vortran lasers in a VersaLase merge and a Plan-Apochromat 100×/1.4 (NA) Oil DIC objective. MetaMorph software (Molecular Devices) was used for microscopy automation. Animals were mounted into a drop of M9 on a 5% Noble agar pad containing approximately 10 mM sodium azide anesthetic and topped with a coverslip.

Image quantification:

Images were processed using Fiji/ImageJ (v.2.0.0) (Schindelin *et al.*, 2012). Nuclear expression of HLH-2 and NHR-67 was quantified by measuring mean gray value as previously described (Medwig-Kinney *et al.*, 2020). DU and VU cells were sampled by selecting the three most proximal to the AC and closest to the coverslip. Cytoplasmic expression of HLH-2 was measured using the freehand selection tool, tracing the outline of the cell but excluding the nucleus. For all quantification, background subtraction was performed by subtracting the mean gray value of a background region of an equal area to account for EM-CCD camera noise.

Data visualization and statistical analysis:

Representative micrographs were processed using Fiji/ImageJ and assembled into figures using Adobe Illustrator (v.23.0.6). RStudio (v.1.4.1717) was used to generate violin/sina plots and to perform statistical analyses.

Reagents

Strains:

| Strain | Genotype | Source |
|--------|---|--------------------------------------|
| DQM350 | <i>hlh-2(bmd90[hlh-2p::LoxP::GFP::HLH-2]) I</i> ; <i>qyIs225[cdh-3p::mCherry::moeABD] V</i> ; <i>qyIs7[laminin::GFP] X</i> . | Medwig-Kinney <i>et al.</i> , (2020) |
| DQM704 | <i>nhr-67(bmd212[nhr-67p::NHR-67::TagRFP-T::AID]) IV</i> ; <i>hlh-2(bmd90[hlh-2p::LoxP::GFP::HLH-2]) I</i> . | This study |
| DQM785 | <i>hlh-2(bmd231[hlh-2p(Δ-1303-702)>LoxP::GFP::HLH-2]) I</i> ; <i>qyIs225[cdh-3p::mCherry::moeABD] V</i> ; <i>qyIs7[laminin::GFP] X</i> . | This study |
| DQM900 | <i>hlh-2(bmd231[hlh-2p(Δ-1303-702)::LoxP::GFP::HLH-2]) I</i> ; <i>nhr-67(bmd212[nhr-67p::NHR-67::TagRFP-T::AID]) IV</i> . | This study |

Sequences:

| Reagent | Sequence |
|---------------------|---|
| <i>dpy-10</i> sgRNA | GCUACCAUAGGCACCACGAG + Synthego modified EZ Scaffold |
| <i>dpy-10</i> ssODN | CACTTGAACCTCAATACGGCAAGATGAGAATGACTGGAAACCGTACCGCATGCGGTGCCT ATGGTAGCGGAGCTTCACATGGCTTCAGACCAACAGCCTAT |

| | |
|--|---|
| <i>hda-1(RNAi)</i> targeting sequence | TTGATGGAGCACGGTAAGCGCCGTGTGCGCTACTACTATGACTCCAACATTGGAAATTACTA TTATGGTCAAGGGCACGTCATGAAGCCACATCGTATCAGAATGACCCATCATCTCGTTCTCA ACTATGGTCTGTACCGGAATTTAGAGATTTTCCGCCATTCCCTGCATCATTGGAAGACATG ACTCGTTTTACAGCGACGAGTACATGACGTTTTTGAAGAGTGCGAATCCAGATAATCTGA AATCCTTCAACAAACAAATGCTTAAAGTTCAATGTTGGAGAAGATTGTCTCTCTTTGATGG TCTTTATGAGTTCTGCCAACTCAGTTCGGGAGGTTCTCTGGCTGCTGCCACTAAATTGAAC AAGCAGAAGGTGGACATTGCTATCAATTGGATGGGAGGCCTCCATCACGCCAAGAAAAG CGAGGCGTCCGGATTCTGTTACACCAATGACATCGTTCTCGGTATTCTCGAGCTTCTCAAG TACCACAAGCGAGTACTTTACGTGATATTGATGTTTCATCACGGAGATGGAGTAGAGGAG GCGTTCTATACGACTGATCGAGTAATGACAGTGTCAATCCATAAATATGGAGATTTCTTCCC AGGAACCGGAGACCTGAAAGATATAGGAGCTGGAAAAGGAAAGCTCTATTCAAGTCAATG TTCCACTTCGCGATGGAATCACCGACGTCTTACCAGAGTATTTTTAAACCAATCATGAC AAAGGTTATGGAGAGATTTGATCCCTGTGCTGTTGTTCTTCAATGTGGAGCTGATTCTCTC AACGGAGATAGACTTGGACCATTCAATCTGACCTTCAAAGGCCACGGAGAATGTGCTCG TTTCTTCCGAAGCTACAACGTTCCACTTATGATGGTTCGGTGGAGGTGGATACTCCAAG AAATGTGGCAGC |
| <i>hlh-2</i> (-1303 bp) gRNA | AUGAAUGUACUCCCUACAGU + Synthego modified EZ Scaffold |
| <i>hlh-2</i> (-702 bp) gRNA | UAAGGAUUCGUAAACAUGU+ Synthego modified EZ Scaffold |
| <i>hlh-2</i> (Δ -1303-702) ssODN | CTCTCACTCTTACCATATTCTGAAGAATAAAATTCAGAGATCCCTACAAAACCTAATAAC ATGCTTCAAAAATGAATGTACTCCCTACAGTCGATCGTAATAGACAATGTTTACGAATCCTT ACCAATTTTGAATTTAAACAAGAACGCAAATGTATTGTAGGGCAGTTTTTTTTTCAATTATT GAGTTTATCAAAA |
| <i>nhr-67</i> C-terminus sgRNA | AGAGAGTGTTAATGTTGAAG |
| <i>nhr-67</i> C-terminus left homology arm | GGAATAATGTGAGACTTCACTATAAAGGTAAACGCTGTTTTTCTGAGTGGGTTGCAACGATC AAAGTTAATTAATATTGTATTGCTAGTTTGAAGGTTGCTAATTCTTTTTTAAAATTAATTAA TTAACCAATTGAAAAGTTCATTTATAGTTTTTGTACGATTATCCTATTCAAAAAGTTCATTTTT CGGCTCAAAATATAAAAAATTCCACAATTAAAAAAGCAGTGTTTTTGTCTCACAAAAAAT GCAAATTATTTCTATTTGCTTAAAAAGCGAAATTGATTATTGAAAATAATGAAAATAAA CGCTCTAGTACCATCTTTCCTTCTGAAAACCTCACAGTCTGAAACCTATTTCAGATGTATAAA TGCAATTGCCGCTATTCCAACAACCTCAATAATTGATGTTCTATTCCGCCCTTCAATTGGATC AGCTTCAATGCCAAGACTTATTCAAGACATGTTCAAGCCACCACAACAACCCACTCCTACG TCACTGTTTCCAATGGCAAACCTCAATTTGAACTTTCTATTAACAAGAAAAAACCGAAA CTGAAGAGGGTGAAGATATTGAAGAAGAGGATGATGCGACGAGTAGCAATCAATTTGATG AAAATTCTTCTACTGATGATAGGTATGATGAGCATTATTAGTACAGTGGATTAAGTCTGAGTC TGTTGCAGATCTGTCCGAGAACTGGATCCCGTTCAACTTTTTCTTGGCTCTTAATTCCTCAAC TCAGCCTTCATCGGCATCATCCCCTTCTTCAAGACCACGTCATTTCGATTCGATCAATAAC TGAATTATTATCAATTCAAGAAGAGGAAAGCGTGAACGTGGAGGAAGTG |

| | |
|--|--|
| <p><i>nhr-67</i> C-terminus right homology arm</p> | <p>TAAATAGTAAATTCATGTTTCATATACAGTAACTCAATTATTCTAAGTATCTCTTTTCATTGTCT TTTTCACTCCGTTTCTTGCCTCGCCCGGATTTTCATTGGATTTTGATTATACTTTCAAATTT CATTTTTCAATTGTAAATTTTAAATTTAATTTAGAGAAAAAAATGGTAAGCTTTAAACTA ATTTATTATTTTCTGATTTATATTGTGAACAGATGAATAAAACGTTTACAACAATGGCAATTG GCATACAAACATCATTAATAAAAGGTGAATCATAACAGTTTTGAGAAGACTACATATGATTGCG AAACATAAAAAACAATAGAAATCAATAAATGATGGGAGAGAAACCGAGAGATTTATTGGAA AATGGAACGGTTGAATGTCATATTGTGTCATCGTCGTTTTCTTGTAAATGGCCTCGTTTCTT ATCATATCCATATCATTCTGATATTCCCATTCAACTAGATGACCAAATCATTAGCTGACTGATT TCCCCTTTTTAATGATTTGTTTATGGTTTTGTCAATAGTTTGAACGCGTTACGTTTTTGTAGA TAAACCTGATTATGCTAGAATATTTTTTATTGAGATTTATTGACTAATTTAAAGTTTTAAACTA ACAGAACAACAACCAATATTATAAAGAAAATGCTTTAAACTCATTTTTGAACATCCAGAACA TCCGAAAAATAACCAACATGGTTAAGATTTTTCAAAGTTTTTAGTCAAAGTTTCGGTATCTAT TTGCAATTTTCAAAAAACATGGAATATTTTCAGTAATTGCTTTTTCGAACTCCCAGACTGTTT GAATACAAAATTGAAAAGCAAGTAAACAATAAAAAATTGTAGATATTTTTCAAAGACTTT CAAATTTATAGGCGTAGGCTTCACTAATTTTTGACTGTCAGTAAATATTTATTTCAAAAAAA TTTTAAAAGTTTTACCATAATTTGGGCATGGGCATTTTACTTTTTAAAACGATTTCTAAAG AAACCATTTTTATATGTA AACAGTTTTGCTCAATTTTACCAGTTATCAA</p> |
| <p>Forward primer to amplify <i>nhr-67</i> C-terminus right homology arm from gDNA</p> | <p>CGGCGGCGTTCGTGAAATAAATAGTAAATTCATGTTTCATATAC</p> |
| <p>Reverse primer to amplify <i>nhr-67</i> C-terminus right homology arm from gDNA</p> | <p>GCTATGACCATGTTATCGATTTCTAGTTGATAACTGGTAAAATTGAGCA</p> |

Acknowledgments: We would like to thank Christopher Hammell at Cold Spring Harbor Laboratory for sharing his Cas9 protein-based CRISPR protocol and reagents.

References

- Ashley GE, Duong T, Levenson MT, Martinez MAQ, Johnson LC, Hibshman JD, Saeger HN, Palmisano NJ, Doonan R, Martinez-Mendez R, Davidson BR, Zhang W, Ragle JM, Medwig-Kinney TN, Sirota SS, Goldstein B, Matus DQ, Dickinson DJ, Reiner DJ, Ward JD. 2021. An expanded auxin-inducible degron toolkit for *Caenorhabditis elegans*. *Genetics* 217: iyab006. PMID: 33677541.
- Attner MA, Keil W, Benavidez JM, Greenwald I. 2019. HLH-2/E2A Expression Links Stochastic and Deterministic Elements of a Cell Fate Decision during *C. elegans* Gonadogenesis. *Curr Biol* 29: 3094-3100.e4. PMID: 31402303.
- Bodofsky S, Liberatore K, Pioppo L, Lapadula D, Thompson L, Birnbaum S, McClung G, Kartik A, Clever S, Wightman B. 2018. A tissue-specific enhancer of the *C. elegans* *nhr-67/tailess* gene drives coordinated expression in uterine stem cells and the differentiated anchor cell. *Gene Expr Patterns* 30: 71-81. PMID: 30404043.
- Brenner S. 1974. The genetics of *Caenorhabditis elegans*. *Genetics* 77: 71-94. PMID: 4366476.
- Celniker SE, Dillon LA, Gerstein MB, Gunsalus KC, Henikoff S, Karpen GH, Kellis M, Lai EC, Lieb JD, MacAlpine DM, Micklem G, Piano F, Snyder M, Stein L, White KP, Waterston RH, modENCODE Consortium. 2009. Unlocking the secrets of the genome. *Nature* 459: 927-30. PMID: 19536255.
- De Nadal E, Zapater M, Alepuz PM, Sumoy L, Mas G, Posas F. 2004. The MAPK Hog1 recruits Rpd3 histone deacetylase to activate osmoreponsive genes. *Nature* 427: 370-4. PMID: 14737171.

- Dickinson DJ, Ward JD, Reiner DJ, Goldstein B. 2013. Engineering the *Caenorhabditis elegans* genome using Cas9-triggered homologous recombination. *Nat Methods* 10: 1028-34. PMID: 23995389.
- Dickinson DJ, Pani AM, Heppert JK, Higgins CD, Goldstein B. 2015. Streamlined Genome Engineering with a Self-Excising Drug Selection Cassette. *Genetics* 200: 1035-49. PMID: 26044593.
- Ghanta KS, Mello CC. 2020. Melting dsDNA Donor Molecules Greatly Improves Precision Genome Editing in *Caenorhabditis elegans*. *Genetics* 216: 643-650. PMID: 32963112.
- Gui CY, Ngo L, Xu WS, Richon VM, Marks PA. 2004. Histone deacetylase (HDAC) inhibitor activation of p21WAF1 involves changes in promoter-associated proteins, including HDAC1. *Proc Natl Acad Sci U S A* 101: 1241-6. PMID: 14734806.
- Harris TW, Arnaboldi V, Cain S, Chan J, Chen WJ, Cho J, Davis P, Gao S, Grove CA, Kishore R, Lee RYN, Muller HM, Nakamura C, Nuin P, Paulini M, Raciti D, Rodgers FH, Russell M, Schindelman G, Auken KV, Wang Q, Williams G, Wright AJ, Yook K, Howe KL, Schedl T, Stein L, Sternberg PW. 2020. WormBase: a modern Model Organism Information Resource. *Nucleic Acids Res* 48: D762-D767. PMID: 31642470.
- Kadosh D, Struhl K. 1997. Repression by Ume6 involves recruitment of a complex containing Sin3 corepressor and Rpd3 histone deacetylase to target promoters. *Cell* 89: 365-71. PMID: 9150136.
- Kadosh D, Struhl K. 1998. Histone deacetylase activity of Rpd3 is important for transcriptional repression in vivo. *Genes Dev* 12: 797-805. PMID: 9512514.
- Karp X, Greenwald I. 2003. Post-transcriptional regulation of the E/Daughterless ortholog HLH-2, negative feedback, and birth order bias during the AC/VU decision in *C. elegans*. *Genes Dev* 17: 3100-11. PMID: 14701877.
- Karp X, Greenwald I. 2004. Multiple roles for the E/Daughterless ortholog HLH-2 during *C. elegans* gonadogenesis. *Dev Biol* 272: 460-9. PMID: 15282161.
- Kimble J, Hirsh D. 1979. The postembryonic cell lineages of the hermaphrodite and male gonads in *Caenorhabditis elegans*. *Dev Biol* 70: 396-417. PMID: 478167.
- Matus DQ, Li XY, Durbin S, Agarwal D, Chi Q, Weiss SJ, Sherwood DR. 2010. In vivo identification of regulators of cell invasion across basement membranes. *Sci Signal* 3: ra35. PMID: 20442418.
- Matus DQ, Lohmer LL, Kelley LC, Schindler AJ, Kohrman AQ, Barkoulas M, Zhang W, Chi Q, Sherwood DR. 2015. Invasive Cell Fate Requires G1 Cell-Cycle Arrest and Histone Deacetylase-Mediated Changes in Gene Expression. *Dev Cell* 35: 162-74. PMID: 26506306.
- Medwig-Kinney TN, Smith JJ, Palmisano NJ, Tank S, Zhang W, Matus DQ. 2020. A developmental gene regulatory network for *C. elegans* anchor cell invasion. *Development* 147: dev185850. PMID: 31806663.
- Paix A, Wang Y, Smith HE, Lee CY, Calidas D, Lu T, Smith J, Schmidt H, Krause MW, Seydoux G. 2014. Scalable and versatile genome editing using linear DNAs with microhomology to Cas9 Sites in *Caenorhabditis elegans*. *Genetics* 198: 1347-56. PMID: 25249454.
- Porta-de-la-Riva M, Fontrodona L, Villanueva A, Cerón J. 2012. Basic *Caenorhabditis elegans* methods: synchronization and observation. *J Vis Exp* 64: e4019. PMID: 22710399.
- Ranawade AV, Cumbo P, Gupta BP. 2013. *Caenorhabditis elegans* histone deacetylase hda-1 is required for morphogenesis of the vulva and LIN-12/Notch-mediated specification of uterine cell fates. *G3 (Bethesda)* 3: 1363-74. PMID: 23797102.
- Rundlett SE, Carmen AA, Suka N, Turner BM, Grunstein M. 1998. Transcriptional repression by UME6 involves deacetylation of lysine 5 of histone H4 by RPD3. *Nature* 392: 831-5. PMID: 9572144.
- Sallee MD, Greenwald I. 2015. Dimerization-driven degradation of *C. elegans* and human E proteins. *Genes Dev* 29: 1356-61. PMID: 26159995.
- Schindler AJ, Sherwood DR. 2011. The transcription factor HLH-2/E/Daughterless regulates anchor cell invasion across basement membrane in *C. elegans*. *Dev Biol* 357: 380-91. PMID: 21784067.
- Schindelin J, Arganda-Carreras I, Frise E, Kaynig V, Longair M, Pietzsch T, Preibisch S, Rueden C, Saalfeld S, Schmid B, Tinevez JY, White DJ, Hartenstein V, Eliceiri K, Tomancak P, Cardona A. 2012. Fiji: an open-source platform for biological-image analysis. *Nat Methods* 9: 676-82. PMID: 22743772.
- Shao LW, Peng Q, Dong M, Gao K, Li Y, Li Y, Li CY, Liu Y. 2020. Histone deacetylase HDA-1 modulates mitochondrial stress response and longevity. *Nat Commun* 11: 4639. PMID: 32934238.
- Sherwood DR, Sternberg PW. 2003. Anchor cell invasion into the vulval epithelium in *C. elegans*. *Dev Cell* 5: 21-31. PMID: 12852849.

Sturm Á, Saskoi É, Tibor K, Weinhardt N, Vellai T. 2018. Highly efficient RNAi and Cas9-based auto-cloning systems for *C. elegans* research. *Nucleic Acids Res* 46: e105. PMID: 29924347.

Vidal M, Gaber RF. 1991. RPD3 encodes a second factor required to achieve maximum positive and negative transcriptional states in *Saccharomyces cerevisiae*. *Mol Cell Biol* 11: 6317-27. PMID: 1944291.

Wang Z, Lyu J, Wang F, Miao C, Nan Z, Zhang J, Xi Y, Zhou Q, Yang X, Ge W. 2018. The histone deacetylase HDAC1 positively regulates Notch signaling during *Drosophila* wing development. *Biol Open* 7: bio029637. PMID: 29437043.

Funding: This work was funded by the National Institutes of Health (NIH) National Institute of General Medical Sciences (NIGMS) [1R01GM121597-01 to D.Q.M.]. D.Q.M. is also a Damon Runyon-Rachleff Innovator supported (in part) by the Damon Runyon Cancer Research Foundation [DRR-47-17]. T.N.M.-K. is supported by the NIH Eunice Kennedy Shriver National Institute of Child Health and Human Development [F31HD100091-03]. N.J.P. is supported by the American Cancer Society [132969-PF-18-226-01-CSM].

Author Contributions: Taylor N Medwig-Kinney: Conceptualization, Formal analysis, Investigation, Resources, Visualization, Writing - original draft. Nicholas J Palmisano: Formal analysis, Conceptualization, Investigation, Resources, Writing - review and editing. David Q Matus: Conceptualization, Funding acquisition, Project administration, Supervision, Writing - review and editing.

Reviewed By: Anonymous

History: **Received** August 13, 2021 **Revision received** August 24, 2021 **Accepted** August 25, 2021 **Published** September 2, 2021

Copyright: © 2021 by the authors. This is an open-access article distributed under the terms of the Creative Commons Attribution 4.0 International (CC BY 4.0) License, which permits unrestricted use, distribution, and reproduction in any medium, provided the original author and source are credited.

Citation: Medwig-Kinney, TN; Palmisano, NJ; Matus, DQ (2021). Deletion of a putative HDA-1 binding site in the *hllh-2* promoter eliminates expression in *C. elegans* dorsal uterine cells. *microPublication Biology*. <https://doi.org/10.17912/micropub.biology.000449>