

Fasting Serum C-Peptide Levels Predict Cardiovascular and Overall Death in Nondiabetic Adults

Nileshkumar Patel, MD; Tracey H. Taveira, PharmD; Gaurav Choudhary, MD; Hilary Whitlatch, MD; Wen-Chih Wu, MD, MPH

Background—Insulin resistance, characterized by hyperinsulinemia and normal or elevated serum glucose, is an established precursor to diabetes and cardiovascular disease. Despite fasting serum C-peptide levels being an accurate and stable marker of endogenous insulin production used in patients with diabetes, it is unknown whether C-peptide could serve as a marker of insulin resistance and predict outcomes in patients without diabetes.

Method and Results—This is a retrospective cohort study using data from the NHANES-3 (1988–1994) survey with mortality follow-up through December 31, 2006. Participants included 5153 subjects, 40 to 74 years of age with fasting glucose ≥ 70 mg/dL, without diabetes by history or laboratory testing. Receiver-operating-curve analysis compared fasting C-peptide against known insulin resistance measures such as fasting plasma glucose, serum insulin, HOMA-IR, quantitative-insulin-sensitivity-check-index, and metabolic syndrome for the prediction of cardiovascular and overall death. Subjects were then stratified by quartiles of C-peptide levels. Cox proportional-hazards modeling compared hazards of cardiovascular and overall death amongst C-peptide quartiles and adjusted for potential confounders of cardiovascular and diabetes risk. Fasting serum C-peptide levels predicted cardiovascular and overall death better than other studied measures (AUC=0.62 and 0.60 respectively vs the rest, with AUC \leq 0.58 and \leq 0.57 respectively, $P<0.001$). When compared with the lowest C-peptide quartile, subjects in the highest quartile had significantly higher adjusted hazard ratios (HR) of cardiovascular death (HR=1.60, 95%CI 1.07 to 2.39) and overall mortality (HR=1.72, 95%CI 1.34 to 2.21) after controlling for confounders.

Conclusions—C-peptide levels significantly related to hazards of cardiovascular and overall death in nondiabetic adults and was a better predictor of these outcomes than serum insulin and/or glucose derived measures. (*J Am Heart Assoc.* 2012;1:e003152 doi: 10.1161/JAHA.112.003152)

Key Words: cardiovascular risk • glucose intolerance • insulin resistance

Insulin resistance is a component of type 2 diabetes¹ and is associated with obesity² and glucose, lipid and blood pressure dysregulation,³ in a conglomeration of cardiovascular risk factors defined as metabolic syndrome.^{4,5} Insulin

resistance is characterized by hyperinsulinemia⁶ in the setting of normal or elevated serum glucose and has been related to incident diabetes,⁷ coronary heart disease,^{8,9} and mortality^{10,11} in subgroups of nondiabetic subjects. Therefore, assessment of insulin resistance is an important way to identify individuals without diabetes who are at an increased risk for adverse outcomes and potentially targets them for early intervention.

Previous studies have included measurement of serum insulin levels as a marker of insulin resistance.⁷ An alternative marker is C-peptide, a protein that is cosecreted with insulin on an equimolar basis from pancreatic beta cells. Unlike insulin, it does not undergo hepatic first pass metabolism, has a longer half-life, and has been recognized as a more stable and accurate marker of endogenous insulin secretion.^{12–14} However, there is limited data on the clinical and epidemiological value of C-peptide measurement as a marker of insulin resistance, especially in individuals without known diabetes mellitus. Furthermore, it is unclear how C-peptide compares to other known indices of insulin resistance in predicting cardiovascular and overall death.

From the Research Enhancement Award Program, Providence Veterans Affairs Medical Center, Providence, RI (N.P., T.H.T., W.C.W.); University of Rhode Island College of Pharmacy, Kingston, RI (T.H.T., W.C.W.); Medical Service (G.C., H.W., W.C.W.) and Pharmacy Service (T.H.T.) Providence Veterans Affairs Medical Center, Providence, RI; Department of Medicine, Alpert Medical School of Brown University, Providence, RI (T.H.T., G.C., H.W., W.C.W.).

The views expressed in this article are those of the authors and do not necessarily reflect the position or policy of the Department of Veterans Affairs.

Correspondence to: Wen-Chih Wu, MD, MPH, Providence Veterans Affairs Medical Center, 830 Chalkstone Ave, Providence, RI 02908. E-mail: Wen-Chih.Wu@va.gov

Received July 28, 2012; accepted November 15, 2012.

© 2012 The Authors. Published on behalf of the American Heart Association, Inc., by Wiley-Blackwell. This is an Open Access article under the terms of the Creative Commons Attribution Noncommercial License, which permits use, distribution and reproduction in any medium, provided the original work is properly cited and is not used for commercial purposes.

We hypothesized that fasting serum C-peptide level is a better marker of insulin resistance than insulin level alone and would be useful in the prediction of death related to cardiovascular disease in adults without diabetes. To test this hypothesis, we compared fasting serum C-peptide level to other measures of insulin resistance as a predictor of future cardiovascular and overall death using biochemical and outcome data from a nationally representative sample of nondiabetic adults living in the United States. Additionally, we studied the relationship between C-peptide levels and mortality related to cardiovascular diseases, independent of other known cardiovascular or diabetes risk factors.

Methods

Design

We conducted a retrospective cohort study to assess the relationship between insulin resistance as measured by fasting C-peptide levels and subsequent cardiovascular disease and overall death in nondiabetic adults.

Data Source

The Third National Health and Nutrition Examination Survey (NHANES 3) was a nationwide survey conducted by the Centers for Disease Control and Prevention to assess the health and nutrition status of adults and children in the United States in 1988–1994 through interviews, physical examination, and laboratory assessments.¹⁵ Because this study involved the use of deidentified data in a publically accessible government database, we obtained an exemption status from the Providence VA Medical Center's institutional review board.

Study Sample

We studied adults without diabetes, 40 to 74 years of age, who had undergone an oral glucose tolerance test from the NHANES 3 data set (N=6652). Excluded were participants who were told they had diabetes by their physicians or were taking antidiabetes medications (510 excluded) and those who had a fasting plasma glucose ≥ 126 or < 70 mg/dL, an oral glucose tolerance test glucose ≥ 200 mg/dL, or serum hemoglobin A1c levels of $\geq 6.5\%$ (989 excluded). This yielded a final analytic sample of 5153 subjects.

Outcomes

The primary outcome was cardiovascular death, and the secondary outcome was overall (all-cause) death. Tertiary outcomes included subcategories of the primary outcome such as cerebrovascular disease death, ischemic heart

disease death, and myocardial infarction death. Mortality status was obtained from the NHANES 3–linked mortality–public-use file, which provided mortality data from the date of the NHANES 3 survey participation through December 31, 2006.¹⁵ Underlying causes of death were provided by death certificate data contained in the same mortality files and classified according to the *10th International Statistical Classification of Diseases, Injuries and Causes of Death* (ICD-10) guidelines. Cardiovascular death was considered when cardiovascular disease was the underlying cause of death or when it is one of the multiple causes of the death. The ICD-10 codes for cardiovascular disease (I00 to I99) were identified according to the American Heart Association guidelines and included essential hypertension and hypertensive heart and kidney disease (I10 to I13), ischemic heart diseases (I20 to I25), acute rheumatic fever and chronic rheumatic heart diseases (I00 to I09), acute and subacute endocarditis (I33), diseases of pericardium and acute myocarditis (I30 to I31, I40), other heart diseases (I26 to I51), heart failure (I50), all other forms of heart disease (I26 to I28, I34 to I38, I42 to I49, I51), cerebrovascular diseases (I60 to I69), atherosclerosis (I70), and other diseases and disorders of circulatory system (I71 to I78, I80 to I99).¹⁶ The distribution of major cardiovascular diseases in death certificates of the study population was included in Table 1. Follow-up data were 99.8% complete, with the exception of 1 participant without

Table 1. Distribution of Major Cardiovascular Diseases in Death Certificates of the Study Population

Ischemic heart diseases, %	50.6
Cerebrovascular diseases, %	14.84
Hypertension as multiple causes of death, %	8.74
Hypertensive heart disease, %	2.64
Hypertensive heart and renal disease, %	0.41
Essential (primary) hypertension and hypertensive renal disease, %	1.83
Heart failure, %	5.89
Aortic aneurysm and dissection, %	2.24
Other diseases of arteries, arterioles and capillaries, %	0.20
Other disorders of circulatory system, %	0.81
Atherosclerosis, %	0.81
All other forms of heart disease*, %	10.37
Acute rheumatic fever and chronic rheumatic heart diseases, %	0.41
Acute and subacute endocarditis, %	0.20

*Pulmonary heart disease and diseases of pulmonary circulation (eg, pulmonary embolism), valvular heart disease, cardiomyopathy, arrhythmia (tachy and brady), cardiac septal disease, rupture of chordae tendinae, myocarditis, myocardial degeneration, and Takotsubo syndrome.

survival data and 12 participants whose underlying cause of death cannot be ascertained because death certificate data were not available.

Fasting serum C-peptide levels were drawn in conjunction with baseline plasma glucose as part of the participant's oral glucose tolerance test and excluded participants with any of the following conditions: diagnosis of diabetes mellitus, prescribed medications for diabetes, diagnosis of hemophilia, cancer with chemotherapy 4 weeks before the examination, or pregnancy. The eligible participants were instructed to fast for 10 to 16 hours before the morning blood draw. The specimen was obtained at the time of the initial venipuncture and processed using standard radioimmunoassay methods by highly trained medical personnel who had completed comprehensive training in standardized laboratory procedures. Equipment operation, specimen collection and preparation, and testing procedures were monitored for quality assurance with detailed instructions in the manual of medical technicians (US Department of Health and Human Services, 1996).^{17,18} The minimal reportable range for C-peptide levels was 0.021 nmol/L; values below the detection limit were coded in this study as 0.021. The coefficient of variation for the lower extreme of the values was 14.7% (for mean C-peptide levels of 0.265, 95% confidence interval [CI] 0.187 to 0.343 nmol/L) and 6.6% for the upper extreme of the values (for mean C-peptide levels of 3.311, 95% CI 2.875 to 3.747 nmol/L).¹⁸

Covariates that were studied at baseline for potential confounding assessment included standard demographics such as age, sex, ethnicity (white, black, Mexican, and other) and education level (less than, equivalent to, and above high school). Based on previous literature, we also assessed the following variables that are known to relate to the development of diabetes or cardiovascular disease: alcohol use (>1 for female and >2 for male, ≤1 for female and ≤2 for male, and 0, drinks in the last month),¹⁹ physical activity (none, <3, and ≥3, times per week),²⁰ fasting plasma glucose levels,²¹ glycated hemoglobin (A1c) levels,²² body mass index,²⁰ estimated glomerular filtration rate by Modification of Diet in Renal Disease (MDRD) formula²³ (≥90, 60 to 89, and <60 mL/min),²⁴ urinary albumin/creatinine ratio,²⁵ and C-reactive protein levels.^{26,27} Also included were cardiovascular risk factors from the Third Adult Treatment Panel (ATP 3) guidelines⁵ such as smoking status (current, former, and never), blood pressure (<130/80, 130 to 139 systolic or 80 to 89 diastolic, and ≥140 systolic or 90 diastolic, mm Hg), total cholesterol, high-density lipoprotein (HDL) cholesterol, and calculated low-density lipoprotein (LDL) cholesterol (total cholesterol—[triglycerides/5]—HDL)²⁸; components of metabolic syndrome not already included from the same guidelines (triglycerides, waist-to-hip ratio),⁵ family history of heart attack or diabetes, as well as a personal history of stroke,

heart attack, chest pain (none, suggestive, and not suggestive, of angina), and peripheral arterial disease.

Statistical Analysis

Given the complex nonrandom multistage stratified sample design of NHANES 3, analyses were performed using the designated weighting specified in the data set to minimize biases.²⁹ As such, we used the total NHANES 3 pseudostratum as our strata variable, the total pseudoprimary sampling units as our survey sampling units, and the total mobile examination center (MEC) final weight as our sampling unit weight.

First, we evaluated the sensitivity and specificity of several indices of insulin resistance in the prediction of cardiovascular and overall death by means of receiver operating characteristic (ROC) curves and evaluated their correlation with C-peptide levels. The indices included fasting levels of serum C-peptide, serum insulin,⁶ and plasma glucose, as well as the homeostatic model assessment of insulin resistance (HOMA-IR index),³⁰ quantitative insulin sensitivity check index (QUICKI index),³¹ and metabolic syndrome.⁵ Next, we identified the index of insulin resistance with the largest ROC area under the curve (AUC) and used it as the reference for comparison against the AUC of other indices using chi-square analysis. The ROC analyses were frequency weighted using NHANES 3 probability weights rounded to the nearest integer.³²

We then stratified our study sample by quartiles of C-peptide levels (≤0.418, 0.419 to 0.652, 0.653 to 0.983, and ≥0.984 nmol/L). Differences in baseline characteristics among subjects across C-peptide quartiles were compared using linear regression for continuous variables and χ^2 analysis for categorical variables. Kaplan–Meier curves were created to estimate the percent of event-free period of survival according to C-peptide quartiles. The association between C-peptide quartiles and study outcomes over time was examined using Cox proportional-hazards modeling with subjects in the lowest C-peptide quartile (≤0.418 nmol/L) as the reference category. We adjusted for potential confounding in a model that included all the assessed covariates with the exception of LDL cholesterol due to its high collinearity with other lipid variables. The resulting model yielded excellent discrimination with a Harrell's C statistic of 0.82 for cardiovascular mortality and 0.78 for overall mortality. We tested for assumption of proportional hazards on the primary outcome by visual inspection of the Kaplan–Meier curves as well as the inclusion of an interaction term of C-peptide quartiles with log(time) in the Cox model.³³ The comparison of the Cox models with and without the interaction term showed no significant difference by likelihood-ratio test ($P=0.94$), confirming the assumption of the proportional hazards. We also estimated the attributable risk percent for the cardiovascular and overall death in relationship to C-peptide levels

to determine the excess risk associated with high C-peptide levels,³⁴ where the “exposed” group was defined by the top quartile of C-peptide levels and the “unexposed” group by the remaining population.

Additional analyses on the primary outcome were performed to test whether potential interaction between C-peptide levels and body mass index, sex, race, or glomerular filtration rate (≥ 60 mL/min vs < 60 mL/min) existed. In addition, subgroup analyses were performed for individuals with normal fasting glucose (< 100 mg/dL) and in those without metabolic syndrome as defined by the ATP 3 criteria,⁵ and in specific outcomes of interest; namely, death due to cerebrovascular disease, ischemic heart disease, and myocardial infarction (included in the ischemic heart disease death). To identify whether the association with mortality differed for C-peptide compared with other biochemical markers of insulin resistance (HOMA-IR, QUICKI, and serum insulin levels), we also studied the effect of using these other biochemical markers in lieu of C-peptide quartiles in the survival models.

Data was 98.6% complete for all covariates, with missing values that ranged from 0.1% (history of peripheral arterial disease) to 2.5% (waist-to-hip ratio). Missing data in the covariates were imputed based on 10 sets of simulated values generated from nonmissing variables using the multiple imputation method in STATA (StataCorp, College Station, Tex).³⁵ Analyses were performed on each of the 10 data sets completed with imputed values, and then combined using Rubin’s combination rules to consolidate the individual estimates into a single set of estimates using the MI estimate command in STATA.^{36,37} All statistical analyses were conducted in STATA SE 11.1.³⁸ A 2-sided *P* value of < 0.05 was considered significant.

Results

Baseline Characteristics of the Study Population

Our final analytic sample included 5153 nondiabetic adults between 40 and 74 years of age, which was representative of a population of 61 651 227 nondiabetic US adults of the same age group. The baseline clinical characteristics of the study population, both overall and according to C-peptide category, are shown in Table 2. Increasing quartiles of C-peptide levels were associated with higher likelihoods of having an older age, male gender, nonwhite ethnicity, education less than high school, previous or current smoking history, personal history of heart attack, chest pain or stroke; family history of diabetes, blood pressure $\geq 140/90$, and metabolic syndrome. Compared with participants in the lowest C-peptide quartile, participants in the higher C-peptide quartiles were also more likely to have a higher waist-to-hip

ratio and body mass index. Participants in the lowest C-peptide quartile, on the other hand, were more likely to have exercised ≥ 3 times a week, to have consumed alcohol in the month before the survey, and to have a blood pressure $< 130/80$ compared with participants in higher C-peptide quartiles (Table 2).

The baseline biochemical characteristics of the study population, both overall and according to C-peptide category, are shown in Table 3. Compared with participants in the lowest C-peptide quartile, participants in the higher C-peptide quartiles were more likely to have higher plasma glucose during fasting and 2-hour post-glucose tolerance test, urinary albumin/creatinine ratio, A1c, total and LDL cholesterol, triglyceride, serum fasting insulin, and C-reactive protein levels, as well as the HOMA-IR index. On the other hand, participants in the lowest C-peptide quartile were more likely to have a higher HDL cholesterol level, QUICKI index, and glomerular filtration rate ≥ 90 mL/min than were participants in the higher C-peptide quartiles.

Comparison of C-Peptide With Other Indices of Insulin Resistance

C-peptide levels had a high correlation ($P < 0.001$) with other biochemical indices of insulin resistance such as HOMA-IR ($r = 0.78$), QUICKI ($r = -0.78$), and serum insulin levels ($r = 0.77$). ROC curve analyses showed that fasting serum C-peptide levels had the largest AUC in the prediction of subsequent cardiovascular, and overall death compared with other indices of insulin resistance (Table 4). C-peptide levels (AUC=0.62) had significantly higher AUC’s compared with fasting plasma glucose levels (AUC=0.56), HOMA-IR index (AUC=0.58), fasting serum insulin levels (AUC=0.57), QUICKI index (AUC=0.42), and metabolic syndrome (AUC=0.56) for cardiovascular death, with *P* values at < 0.001 . A similar pattern was found for overall mortality (AUC=0.60 for C-peptide levels vs AUC=0.57 or less in the rest).

C-Peptide Levels and Mortality

The median follow-up for the study was 14.4 years (interquartile range: 3.3 years), with a total follow-up of 70 768 person-years. A total of 513 deaths occurred during the follow-up period. Crude cumulative mortality rates increased significantly with increasing quartiles of C-peptide levels for cardiovascular death (Figure 1), cerebrovascular disease death, ischemic heart disease death, myocardial infarction death, and overall mortality (*P* values < 0.01 for all, Table 5). Of note, cardiovascular mortality was only one-third of the overall mortality at the lowest C-peptide quartile, but they were approximately half of the overall mortality for individuals at the highest C-peptide quartile. The association

Table 2. Baseline Clinical Characteristics of the Study Population, According to Fasting C-Peptide Levels

C-Peptide Category, nmol/L	Overall	≤0.418	0.419 to 0.652	0.653 to 0.983	≥0.984	P Value
No. of participants	5153	1288	1288	1290	1287	<0.01
Mean age±SD, y	54.9±10.5	53.4±10.2	55.0±10.5	55.1±10.4	56.1±10.7	
Sex, %						<0.01
Male	48.3	42.1	46.1	50.7	56.2	
Female	51.7	57.9	53.9	49.3	43.8	
Ethnicity, %						0.01
White	81.7	83.3	80.8	82.6	80	
Black	8.4	8.7	8.7	8.2	7.7	
Mexican	3.2	2.1	2.8	3.7	4.6	
Others	6.7	5.9	7.7	5.5	7.7	
Education, %						<0.01
Less than high school	23.6	18.9	23.2	25.7	27.5	
High school or equivalent	33.5	32.5	30.7	35.5	36	
College or above	42.4	48.1	45.6	38.3	36.1	
Smoking status, %*						<0.01
Current	25.7	25.6	27.3	24.5	25.1	
Former	33.7	31.2	28.6	36.2	40.3	
Never	40.6	43.2	44.1	39.3	34.6	
History of stroke, %	1.7	1.2	1.4	2.1	2.1	0.58
History of heart attack, %	4.0	2.4	2.7	4.3	7.1	<0.01
History of chest pain, %						<0.01
Suggestive of angina	4.7	3.3	3.8	5.3	7.0	
Not suggestive of angina	28.7	26.6	25.1	30.7	33.2	
No chest pain	66.6	70.1	71.1	64	59.8	
Peripheral arterial disease, %	0.9	0.2	1.3	0.3	2.3	<0.01
Family history of heart attack, %	10.7	10.1	10.9	11.4	10.6	0.51
Family history of diabetes, %	25.3	22.1	24.3	24.9	31.1	0.02
Blood pressure, %						<0.01
<130/80, mm Hg	51.3	66.0	53.9	46.2	35.3	
130 to 139/80 to 89, mm Hg	26.1	19.2	27.4	30.4	28.6	
≥140/90, mm Hg	22.5	14.8	18.4	23.3	36.0	
Alcohol use, %						<0.01
0 drink/last month	46.1	41.2	42.8	48.9	53.2	
≤2 drinks/day if male and ≤1 drink/day if female	49.5	52.8	52.7	47.6	43.4	
>2 drinks/day if male and >1 drink/day if female	4.3	5.8	4.4	3.4	3.3	
Physical activity, %						<0.01
No activity	13.8	11.4	11.3	15.7	17.4	
<3 times/week	31.1	23.6	33.7	33.9	34.5	
Mean waist-to-hip ratio±SD	0.9±0.1	0.9±0.1	0.9±0.1	1.0±0.1	1.0±0.1	<0.01
Mean body mass index±SD, kg/m ²	27.5±5.5	23.9±3.7	26.3±4.3	28.6±4.9	31.2±5.9	<0.01
Metabolic syndrome, % [†]	24.5	3.4	12.1	32.3	57.4	<0.01

Frequencies (%) in the columns may not sum to 100% to account for missing data.

*Participants were classified into current smoker if he or she had smoked at least 100 cigarettes during his or her entire life and still smokes, former smoker if he or she had smoked at least 100 cigarettes during his or her entire life but not currently smoking; and never if he or she had never smoked >100 cigarettes during his or her entire life.

†Metabolic syndrome is diagnosed when ≥3 of the following criteria are present; waist circumference >102 cm for men and >88 cm for women, triglycerides level >150 mg/dL, high-density lipoprotein level <40 mg/dL for men and <50 mg/dL for women, blood pressure ≥130/≥85 mm Hg, and fasting glucose ≥110 mg/dL. (Ref Third report of the National Cholesterol Education Program expert panel on detection, evaluation, and treatment of high blood cholesterol in adults)

Table 3. Baseline Biochemical Characteristics of the Study Population, According to Fasting C-Peptide Levels

C-Peptide Category, nmol/L	Overall	≤0.418	0.419 to 0.652	0.653 to 0.983	≥0.984	P Value
No. of participants	5153	1288	1288	1290	1287	<0.01
Mean hemoglobin A1c±SD, %	5.4±0.5	5.3±0.4	5.4±0.4	5.4±0.5	5.5±0.5	
Glomerular filtration rate, %*						<0.01
≥90, mL/min	4.3	4.6	4.2	4.8	3.5	
60 to 89, mL/min	70.3	76.7	71.7	69.8	61.2	
<60, mL/min	24.2	17.4	23.3	23.8	34.2	
Mean fasting plasma glucose±SD, mg/dL	95.5±9.2	90.9±7.5	94.8±8.2	96.8±8.8	99.5±9.8	<0.01
Mean 2 h OGTT±SD, mg/dL	121.2±34	115.6±34.8	117.2±32.9	124.4±33.4	127.2±33.3	<0.01
Mean serum cholesterol±SD, mg/dL	220.6±43.1	213.9±41.9	221.3±40.4	222.2±44.8	224.9±44.3	<0.01
Mean serum HDL±SD, mg/dL	51.5±16.2	59.6±17.5	53.4±15.9	48.4±13.9	44.7±13.2	<0.01
Mean serum triglycerides±SD, mg/dL	149.4±106.2	105.6±69.7	128.8±76.8	161.4±106.2	201.9±133.8	<0.01
Mean calculated serum LDL±D, mg/dL [†]	140.4±38.7	133.9±38.3	142.8±37.7	142.5±39.5	142.6±38.8	<0.01
Mean serum insulin±SD, pmol/L	65.2±47.3	34.4±12.7	47.6±13.4	64.7±19.1	114.2±67.8	<0.01
Mean serum CRP±SD, mg/dL [‡]	0.5±0.7	0.4±0.6	0.4±0.7	0.5±0.8	0.6±0.7	<0.01
Mean urinary albumin/creatinineratio±SD, mg/g	21.2±110.9	10.3±34.8	16.5±94.2	23.3±127.3	34.8±150.6	<0.01
Mean HOMA [§]	15.6±12.5	7.8±3.0	11.2±3.4	15.5±4.8	28.2±18.5	<0.01
Mean QUICKI	0.27±0.02	0.29±0.01	0.28±0.01	0.27±0.01	0.25±0.01	<0.01

Frequencies (%) in the columns may not sum to 100% to account for missing data.

OGTT indicates oral glucose tolerance test; HDL, high-density lipoprotein; LDL, low-density lipoprotein; CRP, C-reactive protein; HOMA, homeostatic model assessment; QUICKI, quantitative insulin sensitivity check index.

*MDRD formula was used to calculate GFR. $GFR = 186 * \text{serum creatinine} - 1.154 * \text{age} - 0.203 * 1.210$ (for black) $- 0.742$ (for female). GFR is in mL/min/1.73 m² body surface area.

[†]LDL was calculated using following formula: $LDL = \text{total cholesterol} - HDL - 0.20 * \text{serum triglycerides}$ if triglycerides ≤400 mg/dL. For triglycerides >400 mg/dL, LDL value was considered missing.

[‡]Lowest detection limit for biochemistry test used in NHANES 3 for C-reactive protein was 0.3 mg/dL.

[§]HOMA=fasting plasma glucose (mg/dL)×fasting serum insulin levels/405.

^{||}QUICKI index=1/(log [fasting serum insulin]+log [fasting plasma glucose]).

between C-peptide quartiles and mortality persisted even after adjustment for potential confounding factors (Table 5). When compared with individuals in the lowest quartile of C-peptide levels (≤0.418 nmol/L), subjects in the highest C-peptide quartile (≥0.984 nmol/L) had a 60% increase in the adjusted hazards of cardiovascular death. A similar pattern and magnitude of increased hazards of mortality for individuals in the highest C-peptide quartile were found for cerebrovascular disease, ischemic heart disease, myocardial infarction, and overall mortality compared with participants in the lowest quartile of C-peptide levels. Of note, analyses of specific outcomes such as death due to ischemic heart disease and myocardial infarction did not reach statistical significance, except for cerebrovascular disease death (adjusted HR=3.94, 95% confidence interval [CI] 1.28 to 12.1), although their 95% CIs of these specific outcomes overlap with those of cardiovascular and overall mortality (Table 5). The attributable risk percent for individuals with C-peptide levels in the highest quartile vs the remaining of the population was 52% for cardiovascular mortality and 40.6% for overall mortality.

Although additional analyses did not show a significant interaction between body mass index, sex, or race, and C-peptide levels, we did find an interaction of borderline significance ($P=0.04$) between kidney function and the highest quartile of C-peptide levels. Indeed, for subjects with a glomerular filtration rate <60 mL/min, the adjusted HR of cardiovascular death were 3.73 (95% CI 1.18 to 11.7) for individuals in the highest vs the lowest quartiles of C-peptide levels. On the other hand, for subjects with a glomerular filtration rate ≥60 mL/min, the adjusted HR of cardiovascular death were nonsignificantly elevated at 1.34 (0.82 to 2.19) for individuals in the highest vs the lowest quartiles of C-peptide levels. Subgroup analyses on individuals with a normal fasting glucose and in those without metabolic syndrome showed consistency of C-peptide quartiles as an independent predictor of cardiovascular death (Table 6).

From the Cox model, independent clinical predictors associated with higher hazards of cardiovascular death were increasing age, male, blood pressure ≥140 mm Hg systolic or 90 mm Hg diastolic, education less than high school vs college level, current smoking, previous stroke, previous heart

Table 4. Receiver Operating Characteristic Curves of Different Indices of Insulin Resistance to Predict Cardiovascular or Overall Death

Indices of Insulin Resistance	Area Under the Curve (95% Confidence Interval)	P Value vs C-Peptide
Cardiovascular death		
Fasting serum C-peptide levels, nmol/L	0.624 (0.624 to 0.625)	—
Fasting plasma glucose levels, mg/dL	0.558 (0.558 to 0.558)	<0.001
HOMA-IR index	0.583 (0.583 to 0.583)	<0.001
Fasting serum insulin levels, pmol/L	0.567 (0.566 to 0.567)	<0.001
QUICKI index	0.417 (0.417 to 0.418)	<0.001
Metabolic syndrome	0.563 (0.563 to 0.563)	<0.001
Overall mortality		
Fasting serum C-peptide levels, nmol/L	0.600 (0.600 to 0.600)	—
Fasting plasma glucose levels, mg/dL	0.566 (0.566 to 0.566)	<0.001
HOMA-IR index	0.559 (0.558 to 0.559)	<0.001
Fasting serum insulin levels, pmol/L	0.549 (0.549 to 0.549)	<0.001
QUICKI index	0.442 (0.441 to 0.442)	<0.001
Metabolic syndrome	0.543 (0.543 to 0.543)	<0.001

Analysis was frequency weighted using NHANES 3 probability weights rounded to the nearest integer. Some 95% confidence intervals are extremely narrow or showed no variation due to rounding to the nearest 3 decimal points.

HOMA-IR indicates homeostatic model assessment of insulin resistance; QUICKI, quantitative insulin sensitivity check index.

HOMA=fasting plasma glucose (mg/dL)×fasting serum insulin levels/405.

QUICKI index=1/(log [fasting serum insulin]+log [fasting plasma glucose]).

Metabolic syndrome by ATP3 criteria is diagnosed when ≥3 of the following criteria are present: waist circumference >102 cm for men and >88 cm for women, triglycerides level >150 mg/dL, high-density lipoprotein level <40 mg/dL for men and <50 mg/dL for women, blood pressure ≥130/≥85 mm Hg, and fasting glucose ≥110 mg/dL.

attack, and peripheral arterial disease. Independent biochemical predictors of cardiovascular and/or diabetes death included C-reactive protein levels, urinary albumin/creatinine ratio, and C-peptide levels (Table 7). Neither A1c, body mass index, nor fasting plasma glucose levels was an independent predictor of cardiovascular death in the model.

When other biochemical indices of insulin resistance such as serum insulin levels, HOMA-IR, and QUICKI were used in lieu of quartiles C-peptide levels in the study survival models, we only found a significant association between these other biomarkers and overall mortality but not with cardiovascular mortality (Table 8).

Discussion

Very few studies, if any, evaluated the role of fasting serum C-peptide as a biomarker for future cardiovascular death. The

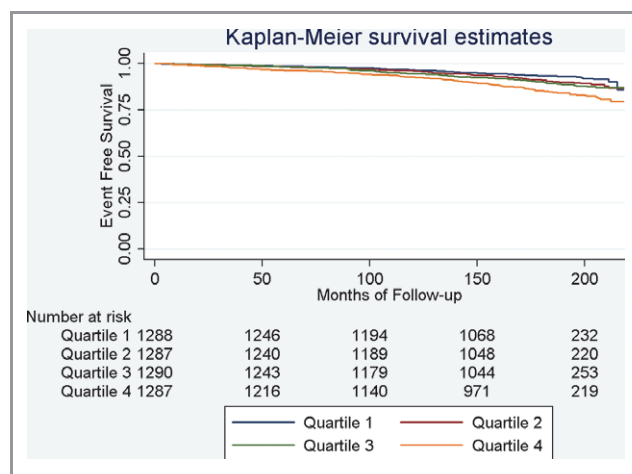


Figure 1. Kaplan–Meier Curve and percent survival estimates for cardiovascular disease death according to quartiles of C-peptide levels. Quartile 1=0.418 nmol/L or less, Quartile 2=0.419 to 0.652 nmol/L, Quartile 3=0.653 to 0.983 nmol/L, Quartile 4=0.984 nmol/L or greater.

present study suggests that fasting serum C-peptide levels were a better predictor of cardiovascular and overall death than fasting serum insulin and its derived measures of insulin resistance in a nationwide sample of nondiabetic adults between 40 and 74 years of age. The effects were independent of several known risk factors for development of diabetes or cardiovascular disease and were consistent even in patients without metabolic syndrome or with normoglycemia. The increased risk of cardiovascular or overall death was 60% and 72% higher, respectively, for participants in the highest vs lowest C-peptide quartiles, with consistent patterns observed in subgroup analyses for mortality due to cerebrovascular disease, ischemic heart disease, or myocardial infarction.

Substantial evidence supports the role of insulin resistance in the development of type 2 diabetes,^{7,39} but a relationship between insulin resistance-hyperinsulinemia as measured by C-peptide levels in adults without diabetes and a future cardiovascular death has not been established from our literature review. This association remained significant for adults without clinical manifestations of insulin resistance such as those with normal fasting glucose levels or without metabolic syndrome at the time of C-peptide level testing. Thus, these results support the role of C-peptide levels to be an important predictor of mortality. Studies in women with breast cancer have also used C-peptide levels as an important prognostic indicator.^{11,40} Irwin et al¹¹ use C-peptide to track the metabolic profile of patients with breast cancer, because both glucose and lipid dysregulation have been associated with incidence of breast cancer.^{41,42} The authors found an increased risk of overall and breast cancer mortality associated with higher C-peptide levels in the population of

Table 5. HRs for Mortality Outcomes During the Study Period, According to Quartiles of C-Peptide Levels

C-Peptide Category, nmol/L	Overall	≤0.418	0.419 to 0.652	0.653 to 0.983	≥0.984
No. of participants	5140	1284	1283	1290	1283
Cardiovascular mortality, %*	7.2	3.8	6.0	7.9	12.2
Crude HR for cardiovascular mortality (95% CI)		Referent	1.61 (1.13 to 2.33)	2.18 (1.40 to 3.28)	3.44 (2.38 to 5.03)
Adjusted HR for cardiovascular mortality (95% CI)		Referent	1.20 (0.80 to 1.80)	1.42 (0.90 to 2.26)	1.60 (1.07 to 2.39)
No. of participants	5140	1284	1283	1290	1283
Cerebrovascular disease mortality, %*	1.0	0.5	0.6	0.8	2.2
Crude HR for cerebrovascular disease mortality (95% CI)		Referent	1.33 (0.53 to 3.37)	1.83 (0.60 to 5.57)	4.82 (1.81 to 12.8)
Adjusted HR for cerebrovascular disease mortality (95% CI)		Referent	1.12 (0.44 to 2.83)	1.22 (0.28 to 5.34)	3.94 (1.28 to 12.1)
No. of participants	5140	1284	1283	1290	1283
Ischemic heart disease mortality, %*	3.9	2.1	3.5	4.2	6.3
Crude HR for ischemic heart disease mortality (95% CI)		Referent	1.67 (1.04 to 2.69)	2.05 (1.30 to 3.26)	3.15 (2.07 to 4.81)
Adjusted HR for ischemic heart disease mortality (95% CI)		Referent	1.17 (0.66 to 2.10)	1.16 (0.65 to 2.06)	1.22 (0.67 to 2.21)
No. of participants	5140	1284	1283	1290	1283
Myocardial infarction mortality, %*	1.5	1.0	1.3	1.1	2.9
Crude HR for myocardial infarction mortality (95% CI)		Referent	1.22 (0.59 to 2.51)	1.13 (0.44 to 2.92)	3.00 (1.32 to 6.79)
Adjusted HR for myocardial infarction mortality (95% CI)		Referent	0.79 (0.37 to 1.67)	0.71 (0.25 to 2.01)	1.37 (0.66 to 2.83)
No. of participants	5152	1288	1287	1290	1287
Overall mortality, %*	18.1	12.3	14.7	20.6	26.4
Crude HR for overall mortality (95% CI)		Referent	1.22 (0.94 to 1.57)	1.77 (1.42 to 2.18)	2.31 (1.77 to 2.99)
Adjusted HR for overall mortality (95% CI)		Referent	1.12 (0.88 to 1.43)	1.57 (1.27 to 1.95)	1.72 (1.34 to 2.21)

ICD-10 codes were used to define underlying cause of death. Cardiovascular mortality was defined as cardiovascular disease (I00 to I99) being the underlying cause of death or when it was one of the multiple causes of the death (American Heart Association 2011 update on heart disease and stroke).¹⁴ Cerebrovascular disease, ischemic heart disease, and myocardial infarction deaths are part of the cardiovascular disease death. Myocardial infarction death is part of the ischemic heart disease death.

Model was adjusted for age, sex, race, waist-to-hip ratio, body mass index, blood pressure, total cholesterol, triglycerides, high-density lipoprotein, history of stroke, heart attack, peripheral arterial disease, family history of diabetes and heart attack, history of chest pain, level of education, smoking status, level of physical activity, alcohol use in last month, C-reactive protein level, urinary albumin/creatinine ratio, glomerular filtration rate, and glycated hemoglobin levels. Bold values represent statistically significant results at *P* values of <0.05.

**P* value <0.01 among quartiles. Mortality rates are population-weighted averages calculated based on NHANES 3 probability weights rounded to the nearest integer.

nondiabetic women with breast cancer.¹¹ Our study builds on these results by showing that the increased mortality risk associated with high C-peptide levels applied to both men and women of the general population between 40 and 74 years of age. Other indices of insulin resistance such as HOMA-IR, that uses a product of serum insulin and plasma glucose levels, have also been shown to be an adverse prognostic indicator for cardiovascular and overall mortality.¹⁰ However, the utility of direct serum insulin measurements is limited by its short half-life.^{12–14} In addition to supporting the increased mortality risk associated with an insulin resistant state with C-peptide levels, we found C-peptide levels to be a better predictor of cardiovascular and overall mortality compared with serum insulin levels. Indeed, C-peptide levels outperformed other known markers of insulin resistance such as HOMA-IR, QUICKI, and metabolic syndrome, among others, in the risk prediction models of cardiovascular and overall death. When compared with other independent predictors of cardiovascu-

lar death found in our study, the increased hazards associated with the highest vs the lowest C-peptide quartile were comparable to that of being of male gender or a current smoker or to have elevated C-reactive protein levels. Our findings suggest that the attributable risk of cardiovascular death associated with C-peptide levels in the upper quartile of the population is ≈52%.

The association between high C-peptide levels and increased risk of cardiovascular death likely reflects the association between insulin resistance and an atherogenic state.⁴³ This hypothesis is supported by the majority of deaths associated with high C-peptide levels being attributed to macrovascular disease (cerebrovascular and ischemic heart disease, and myocardial infarction) death. Although the results might appear that the point estimate for cerebrovascular disease death was higher than the ischemic heart disease or myocardial infarction death, the event rates were low and the 95% CIs overlap to avoid such conclusions. Future

Table 6. Adjusted Hazard Ratio for Cardiovascular Death in Subgroups, According to Quartiles of C-Peptide Levels

	Adjusted Hazard Ratios According Quartiles of C-Peptide Levels, nmol/L (95% CI)			
	<0.418	0.419 to 0.652	0.653 to 0.983	≥0.984
No metabolic syndrome* (n=3784)	Referent	1.32 (0.84 to 2.08)	1.72 (1.10 to 2.69)	2.01 (1.29 to 3.11)
Plasma glucose levels <100 mg/dL (n=3703)	Referent	1.20 (0.77 to 1.87)	1.34 (0.68 to 2.64)	1.74 (1.02 to 2.95)
Glomerular filtration rate ≥60 mL/min (n=3952) [†]	Referent	1.10 (0.68 to 1.80)	1.35 (0.84 to 2.16)	1.34 (0.82 to 2.19)
Glomerular filtration rate <60 mL/min (n=1115) [†]	Referent	2.63 (0.86 to 8.02)	3.03 (0.94 to 9.83)	3.73 (1.18 to 11.7)

Model was adjusted for age, sex, race, waist-to-hip ratio, body mass index, blood pressure (normal, prehypertension, hypertension), total cholesterol, triglycerides, high-density lipoprotein, presence or absence of past history of stroke, heart attack, peripheral arterial disease, presence or absence of family history of diabetes and heart attack, history of chest pain (suggestive of angina, not suggestive of angina and no chest pain), level of education, smoking status, level of physical activity (no physical activity in last month, physical activity levels, alcohol use, C-reactive protein level, urinary albumin/creatinine ratio, glomerular filtration rate, and glycated hemoglobin levels. Bold values represent statistically significant results at *P* values of <0.05.

*Metabolic syndrome is diagnosed based on ATP3 criteria, when ≥3 of the following criteria are present; waist circumference >102 cm for men and >88 cm for women, triglycerides level >150 mg/dL, high-density lipoprotein level <40 mg/dL for men and <50 mg/dL for women, blood pressure ≥130/≥85 mm Hg, and fasting glucose ≥110 mg/dL (Third report of the National Cholesterol Education Program expert panel on detection, evaluation, and treatment of high blood cholesterol in adults).⁵

[†]Interaction glomerular filtration rate-fourth quartile of C-peptide level was significant at a *P* value <0.04.

studies will be needed to further investigate the relationship between C-peptide levels and specific macrovascular disease states. Other explanations for the increased risk of death associated with high C-peptide levels despite adjustment for known cardiovascular risk factors may be that high C-peptide levels predict the future worsening of the current risk factors and/or the future development of diabetes or cardiovascular disease.^{7,8} Another possibility is the existence of other significant predictors of cardiovascular death that we did not account for in our Cox model, such as diastolic dysfunction,⁴⁴ endothelial dysfunction,⁴⁵ and prothrombotic states.^{46,47}

Table 7. Multivariate Adjusted HRs of Independent Covariate Predictors of Cardiovascular Death

Independent Predictors	Adjusted HRs (95% CI)
Age, y	1.10 (1.08 to 1.12)
Male	1.65 (1.23 to 2.21)
Blood pressure ≥140 mm Hg systolic or 90 mm Hg diastolic	2.00 (1.45 to 2.77)
Education less than high school versus college level	1.42 (1.04 to 1.95)
Current smoking	1.96 (1.33 to 2.88)
Previous stroke	2.32 (1.45 to 3.71)
Previous heart attack	2.51 (1.67 to 3.76)
Peripheral arterial disease	2.73 (1.32 to 5.64)
C reactive protein levels, mg/dL	1.21 (1.03 to 1.42)
Urinary albumin/creatinine ratio	1.001 (1.001 to 1.001)

Model was adjusted for age, sex, race, waist-to-hip ratio, body mass index, blood pressure, total cholesterol, triglycerides, high-density lipoprotein, history of stroke, heart attack, peripheral arterial disease, family history of diabetes or heart attack, history of chest pain, level of education, smoking status, level of physical activity, alcohol use in last month, C-reactive protein level, urinary albumin/creatinine ratio, glomerular filtration rate, and glycated hemoglobin levels.

In addition, we found a weak but significant interaction between kidney function and high C-peptide levels, where the cardiovascular mortality risk associated with high C-peptide levels was significantly more accentuated among individuals with glomerular filtration rates <60 mL/min. Potential mechanisms for this interaction could be the increased endothelial dysfunction, inflammation and oxidative stress, among other cardiovascular risk factors that coexist in individuals with kidney disease,^{48–50} in addition to the excess cardiovascular risk associated with insulin resistance. On the other hand, our results did not show a significant interaction between C-peptide levels and body mass index, which is in contrast with the report by Ausk et al,¹⁰ who found HOMA-IR a significant predictor of overall mortality but only in individuals with a normal body mass index. While this discrepancy may be partly explained by the older age of our study population (40 to 74 years vs ≥20 years in the Ausk et al report), it is also possible that fasting serum C-peptide level is a more stable measure of insulin secretion and, therefore, produced more robust results across different stages of obesity than HOMA-IR.^{9,13,14}

The results of this study should be interpreted in the context of several limitations. First, despite the significant relationship between C-peptide levels and mortality, the power of discrimination of C-peptide levels on the cardiovascular and overall mortality is only modest with AUCs of 0.62 and 0.60, respectively. Nevertheless, the ROC for C-peptide was significantly better than all other indices of insulin resistance for the outcomes studied. Second, although we had data on deaths and the causes of death, we could not evaluate data on nonfatal cardiovascular events, which could have increased the power to detect smaller differences between exposure groups and shed light on the potential new mechanisms of harm from insulin resistance. Third, given the observational nature of our study, the possibility of residual confounding exists. Despite our efforts using both multivariate adjustment

Table 8. HRs for Mortality Outcomes During the Study Period, According to Other Biochemical Indices of Insulin Resistance (N=5 152)

	Fasting Insulin Levels, pmol/L	HOMA-IR	QUICKI
Adjusted HR for cardiovascular mortality (95% CI)			
Quartile 1	Referent	Referent	Referent
Quartile 2	0.85 (0.59 to 1.21)	0.93 (0.61 to 1.42)	1.00 (0.71 to 1.40)
Quartile 3	1.10 (0.70 to 1.71)	1.13 (0.73 to 1.74)	0.82 (0.57 to 1.18)
Quartile 4	1.08 (0.66 to 1.77)	1.13 (0.72 to 1.78)	0.88 (0.56 to 1.38)
Adjusted HR for overall mortality (95% CI)			
Quartile 1	Referent	Referent	Referent
Quartile 2	0.95 (0.81 to 1.12)	1.00 (0.83 to 1.20)	0.95 (0.78 to 1.15)
Quartile 3	1.29 (0.98 to 1.71)	1.29 (1.02 to 1.64)	0.74 (0.56 to 0.97)
Quartile 4	1.35 (1.00 to 1.81)	1.36 (1.01 to 1.82)	0.74 (0.55 to 0.99)

CI indicates confidence interval; HR, hazard ratio; HOMA-IR, fasting plasma glucose (mg/dL)×fasting serum insulin levels/405; QUICKI index, 1/[log (fasting serum insulin)+log (fasting plasma glucose)].

Model was adjusted for age, sex, race, waist-to-hip ratio, body mass index, blood pressure, total cholesterol, triglycerides, high density lipoprotein, history of stroke, heart attack, peripheral arterial disease, family history of diabetes and heart attack, history of chest pain, level of education, smoking status, level of physical activity, alcohol use in last month, C-reactive protein level, urinary albumin/creatinine ratio, glomerular filtration rate, and glycated hemoglobin levels. Bold values represent statistically significant results at *P* values of <0.05.

for several demographic and clinical known confounders for cardiovascular disease and diabetes, and stratified analyses to control for the influence of potential confounding, the possibility for “residual confounding” in our statistical modeling may still exist and should be taken into account in the interpretation of our results. Fourth, the use of death certificates to adjudicate causes of death may lead to potential misclassification.^{51–53} Despite this limitation, the accuracy of death certificates is higher for deaths related to diseases of the circulatory system, with a sensitivity of 82% and a positive predictive value of 75%.⁵³ Finally, repetitive measurements of the different biological measures were not available. Ideally, the analysis of the cardiovascular death outcome should be repeated after exclusion of individuals who developed diabetes during follow-up, which is one of the potential mechanisms at which insulin resistance could lead to cardiovascular death. Therefore, the current study could not discern whether the increased cardiovascular death risk in individuals with insulin resistance was due to the insulin resistance status per se or due to future development of risk factors such as diabetes. However, our analyses adjusted for several known risk factors for development of diabetes and subgroup analyses in individuals with lower risk of future diabetes, such as those without metabolic syndrome and those with normal fasting plasma glucose levels, consistently showed increased cardiovascular death risk among study participants in the highest quartile of C-peptide levels. These results would support that the increased risk of cardiovascular death in subjects with high C-peptide levels is unlikely to be attributed solely to the eventual development of diabetes, and suggest additional or alternative mechanisms of harm.

In summary, C-peptide was superior to other insulin-derived measures of insulin resistance in predicting cardiovascular and overall death in nondiabetic adults. C-peptide predicted cardiovascular death even in subjects with normoglycemia and without metabolic syndrome. Prospective studies are needed to elucidate the usefulness of C-peptide levels as a target for intervention to improve cardiovascular outcomes.

Acknowledgments

Drs Patel, Taveira, Choudhary, Whitlatch, and Wu were responsible for the study concept and design; Drs Patel, Taveira, and Wu were responsible for acquisition of data; Drs Patel, Taveira, Choudhary, Whitlatch, and Wu were responsible for the analysis and interpretation of data; Drs Patel and Wu were responsible for the drafting of the manuscript; Drs Taveira, Choudhary, and Whitlatch were responsible for the critical revision of the manuscript for important intellectual content; Drs Patel, Taveira, and Wu were responsible for statistical analysis.

Sources of Funding

This work is supported by the VA REA 08-263. Support includes research space and statistical program access. Dr Choudhary is supported by a VA Merit Award (IBX000711A) from the Department of Veterans Affairs, Veterans Health Administration, Office of Research and Development: Biomedical Laboratory Research and Development Service.

Disclosures

None.

References

- DeFronzo R, Ferrannini E. Insulin resistance: a multifaceted syndrome responsible for NIDDM, obesity, hypertension, dyslipidemia, and atherosclerotic cardiovascular disease. *Diabetes Care*. 1991;14:173–194.
- Ades PA, Savage PD, Toth MJ, Schneider DJ, Audelin MC, Bunn JY, Ludlow M. The influence of obesity and consequent insulin resistance on coronary risk factors in medically treated patients with coronary disease. *Int J Obes (Lond)*. 2008;32:967–974.
- Pihlajamaki J, Gylling H, Miettinen TA, Laakso M. Insulin resistance is associated with increased cholesterol synthesis and decreased cholesterol absorption in normoglycemic men. *J Lipid Res*. 2004;45:507–512.
- Eckel RH, Grundy SM, Zimmet PZ. The metabolic syndrome. *Lancet*. 2005;365:1415–1428.
- Third Report of the National Cholesterol Education Program (NCEP). Expert panel on detection, evaluation, and treatment of high blood cholesterol in adults (Adult Treatment Panel III) final report. *Circulation*. 2002;106:3143.
- Laakso M. How good a marker is insulin level for insulin resistance? *Am J Epidemiol*. 1993;137:959–965.
- Hanson RL, Pratley RE, Bogardus C, Narayan KM, Roumain JM, Imperatore G, Fagot-Campagna A, Pettitt DJ, Bennett PH, Knowler WC. Evaluation of simple indices of insulin sensitivity and insulin secretion for use in epidemiologic studies. *Am J Epidemiol*. 2000;151:190–198.
- Robins SJ, Lyass A, Zachariah JP, Massaro JM, Vasan RS. Insulin resistance and the relationship of a dyslipidemia to coronary heart disease: the Framingham Heart Study. *Arterioscler Thromb Vasc Biol*. 2011;31:1208–1214.
- Lazzeri C, Sori A, Chiostrri M, Gensini GF, Valente S. Prognostic role of insulin resistance as assessed by homeostatic model assessment index in the acute phase of myocardial infarction in nondiabetic patients submitted to percutaneous coronary intervention. *Eur J Anaesthesiol*. 2009;26:856–862.
- Ausk KJ, Boyko EJ, Ioannou GN. Insulin resistance predicts mortality in nondiabetic individuals in the U.S. *Diabetes Care*. 2010;33:1179–1185.
- Irwin ML, Duggan C, Wang CY, Smith AW, McTiernan A, Baumgartner RN, Baumgartner KB, Bernstein L, Ballard-Barbash R. Fasting C-peptide levels and death resulting from all causes and breast cancer: the health, eating, activity, and lifestyle study. *J Clin Oncol*. 2011;29:47–53.
- Rubenstein AH, Pottenger LA, Mako M, Getz GS, Steiner DF. The metabolism of proinsulin and insulin by the liver. *J Clin Invest*. 1972;51:912–921.
- Matthews DR, Rudenski AS, Burnett MA, Darling P, Turner RC. The half-life of endogenous insulin and C-peptide in man assessed by somatostatin suppression. *Clin Endocrinol (Oxf)*. 1985;23:71–79.
- Vezzosi D, Bennet A, Fauvel J, Caron P. Insulin, C-peptide and proinsulin for the biochemical diagnosis of hypoglycaemia related to endogenous hyperinsulinism. *Eur J Endocrinol*. 2007;157:75–83.
- National Center for Health Statistics, Centers for Disease Control and Prevention. Analytic and Reporting Guidelines: The Third National Health and Nutrition Examination Survey, NHANES III (1988–1994): Linked Mortality File Public-use. Available at: http://www.cdc.gov/nchs/data/datalinkage/nh3_file_layout_public_2010.pdf. Accessed September 30, 2011.
- Roger VL, Go AS, Lloyd-Jones DM, Adams RJ, Berry JD, Brown TM, Carnethon MR, Dai S, de Simone G, Ford ES, Fox CS, Fullerton HJ, Gillespie C, Greenlund KJ, Hailpern SM, Heit JA, Ho PM, Howard VJ, Kissela BM, Kittner SJ, Lackland DT, Lichtman JH, Lisabeth LD, Makuc DM, Marcus GM, Marelli A, Matchar DB, McDermott MM, Meigs JB, Moy CS, Mozaffarian D, Mussolino ME, Nichol G, Paynter NP, Rosamond WD, Sorlie PD, Stafford RS, Turan TN, Turner MB, Wong ND, Wylie-Rosett J. Heart disease and stroke statistics: 2011 update. *Circulation*. 2011;123:e18–e209.
- The Third National Health and Nutrition Examination Survey, NHANES III (1988–1994): laboratory data file documentation. (Accessed September 30, 2011 at ftp://ftp.cdc.gov/pub/Health_Statistics/NCHS/nhanes/nhanes3/1A/lab-acc.pdf.)
- U.S. Department of Health and Human Services. Laboratory procedures used for the Third National Health and Nutrition Examination Survey (NHANES 3), 1988–1994. Available at: <http://www.cdc.gov/nchs/data/nhanes/nhanes3/cdrom/NCHS/MANUALS/LABMAN.PDF>. Accessed September 30, 2011.
- Gunji T, Matsuhashi N, Sato H, Iijima K, Fujibayashi K, Okumura M, Sasabe N, Urabe A. Alcohol consumption is inversely correlated with insulin resistance, independent of metabolic syndrome factors and fatty liver diseases. *J Clin Gastroenterol*. 2011;45:808–813.
- Ingelsson E, Arnlov J, Sundstrom J, Riserus U, Michaelsson K, Byberg L. Relative importance and conjoint effects of obesity and physical inactivity for the development of insulin resistance. *Eur J Cardiovasc Prev Rehabil*. 2009;16:28–33.
- Sarwar N, Gao P, Seshasai SR, Gobin R, Kaptoge S, Di Angelantonio E, Ingelsson E, Lawlor DA, Selvin E, Stampfer M, Stehouwer CD, Lewington S, Pennells L, Thompson A, Sattar N, White IR, Ray KK, Danesh J. Diabetes mellitus, fasting blood glucose concentration, and risk of vascular disease: a collaborative meta-analysis of 102 prospective studies. *Lancet*. 2010;375:2215–2222.
- Selvin E, Steffes MW, Zhu H, Matsushita K, Wagenknecht L, Pankow J, Coresh J, Brancati FL. Glycated hemoglobin, diabetes, and cardiovascular risk in nondiabetic adults. *N Engl J Med*. 2010;362:800–811.
- Levey A, Bosch J, Lewis J, Greene T, Rogers N, Roth D. A more accurate method to estimate glomerular filtration rate from serum creatinine: a new prediction equation. Modification of diet in renal disease study Group. *Ann Intern Med*. 1999;130:461–470.
- Vlek AL, van der Graaf Y, Spiering W, Algra A, Visseren FL. Cardiovascular events and all-cause mortality by albuminuria and decreased glomerular filtration rate in patients with vascular disease. *J Intern Med*. 2008;264:351–360.
- Arnlov J, Evans JC, Meigs JB, Wang TJ, Fox CS, Levy D, Benjamin EJ, D'Agostino RB, Vasan RS. Low-grade albuminuria and incidence of cardiovascular disease events in nonhypertensive and nondiabetic individuals: the Framingham Heart Study. *Circulation*. 2005;112:969–975.
- Ridker PM, Rifai N, Clearfield M, Downs JR, Weis SE, Miles JS, Gotto AM Jr. Measurement of C-reactive protein for the targeting of statin therapy in the primary prevention of acute coronary events. *N Engl J Med*. 2001;344:1959–1965.
- Goswami B, Tayal D, Tyagi S, Mallika V. Assessment of insulin resistance, dyslipidemia and inflammatory response in North Indian male patients with angiographically proven coronary artery disease. *Minerva Cardioangiol*. 2011;59:139–147.
- Friedewald WT, Levy RI, Fredrickson DS. Estimation of the concentration of low-density lipoprotein cholesterol in plasma, without use of the preparative ultracentrifuge. *Clin Chem*. 1972;18:499–502.
- Mohadjer L, Montaquila J, Bell B, James P, Flores-Cervantes I, Montes M, Waksberg J, eds. *National Health and Nutrition Examination Survey III: Weighting and Examination Methodology*. Hyattsville, MD: National Center for Health Statistics; 1996. Available at: http://archive.nlm.nih.gov/proj/dxpnnet/nhanes/docs/doc/nhanes_analysis/wgt_exec.pdf. Accessed September 30, 2011.
- Katsuki A, Sumida Y, Gabazza EC, Murashima S, Furuta M, Araki-Sasaki R, Hori Y, Yano Y, Adachi Y. Homeostasis model assessment is a reliable indicator of insulin resistance during follow-up of patients with type 2 diabetes. *Diabetes Care*. 2001;24:362–365.
- Katz A, Nambi SS, Mather K, Baron AD, Follmann DA, Sullivan G, Quon MJ. Quantitative insulin sensitivity check index: a simple, accurate method for assessing insulin sensitivity in humans. *J Clin Endocrinol Metab*. 2000;85:2402–2410.
- Korn EL, Graubard BI. *Analysis of Health Surveys*. New York: John Wiley & Sons, Inc.; 1999.
- Hosmer JDW, Lemeshow S. Chapter 6: assessment of model adequacy. In: Cressie NAC, Fisher NI, Johnstone IM, Kadane JB, Scott DW, et al. eds. *Applied Survival Analysis: regression Modeling of Time to Event Data: regression Modeling of Time to Event Data*. New York: John Wiley & Sons; 1999: 203–222.
- Greenland S, Rothman KJ. Measures of effect and measures of association. In: Rothman KJ, Greenland S, eds. *Modern Epidemiology*. 2nd ed. Philadelphia, PA: Lippincott Williams & Wilkins; 1998:53–55.
- Rubin DB. *Multiple Imputation for Nonresponse in Surveys*. Hoboken, NJ: John Wiley & Sons, Inc.; 1987.
- Rubin DB, Schenker N. Multiple imputation in health-care databases: an overview and some applications. *Stat Med*. 1991;10:585–598.
- Multiple-imputation analysis using STATA's MI command. STATA Corp., 2010. Available at: http://www.stata.com/meeting/boston10/boston10_marchenko.pdf. Accessed October 10, 2012.
- Li K, Raghunathan T, Rubin D. Large-sample significance levels from multiply imputed data using moment-based statistics and an F reference distribution. *J Am Stat Assoc*. 1991;86:1065–1073.
- Lithell H, Sundstrom J, Arnlov J, Bjorklund K, Hanni A, Hedman A, Zethelius B, Byberg L, Kilander L, Reneland R. Epidemiological and clinical studies on insulin resistance and diabetes. *Ups J Med Sci*. 2000;105:135–150.

40. Goodwin PJ, Ennis M, Pritchard KI, Trudeau ME, Koo J, Taylor SK, Hood N. Insulin- and obesity-related variables in early-stage breast cancer: correlations and time course of prognostic associations. *J Clin Oncol*. 2012;30:164–171.
41. Kucharska-Newton AM, Rosamond WD, Mink PJ, Alberg AJ, Shahar E, Folsom AR. HDL-cholesterol and incidence of breast cancer in the ARIC cohort study. *Ann Epidemiol*. 2008;18:671–677. PMID: 2566531.
42. Mink PJ, Shahar E, Rosamond WD, Alberg AJ, Folsom AR. Serum insulin and glucose levels and breast cancer incidence: the atherosclerosis risk in communities study. *Am J Epidemiol*. 2002;156:349–352.
43. Haffner SM, Stern MP, Hazuda HP, Mitchell BD, Patterson JK. Cardiovascular risk factors in confirmed prediabetic individuals. *JAMA*. 1990;263:2893–2898.
44. Wong CY, O'Moore-Sullivan T, Leano R, Byrne N, Beller E, Marwick TH. Alterations of left ventricular myocardial characteristics associated with obesity. *Circulation*. 2004;110:3081–3087.
45. Potenza MA, Montagnani M. Abnormal insulin signaling: early detection of silent coronary artery disease-erectile dysfunction? *Curr Pharm Des*. 2008;14:3737–3748.
46. Karatela RA, Sainani GS. Interrelationships of Factor VII activity and plasma leptin with insulin resistance in coronary heart disease. *Atherosclerosis*. 2010;209:235–240.
47. Varol E, Akcay S, Ozaydin M, Erdogan D, Dogan A, Altinbas A. Mean platelet volume is associated with insulin resistance in non-obese, non-diabetic patients with coronary artery disease. *J Cardiol*. 2010;56:154–158.
48. Banerjee D, Recio-Mayoral A, Chitalia N, Kaski JC. Insulin resistance, inflammation, and vascular disease in nondiabetic predialysis chronic kidney disease patients. *Clin Cardiol*. 2011;34:360–365.
49. Chauveau P, Rigalleau V, Aparicio M. Insulin resistance and chronic kidney disease. *Nephrol Ther*. 2008;4:568–574.
50. Gopal F, Deshmukh A, Shah S, Mehta JL. Triad of metabolic syndrome, chronic kidney disease, and coronary heart disease with a focus on microalbuminuria death by overeating. *J Am Coll Cardiol*. 2011;57:2303–2308.
51. Cheng WS, Wingard DL, Kritz-Silverstein D, Barrett-Connor E. Sensitivity of death certificate data for monitoring diabetes mortality—diabetic eye disease follow-up study, 1985–1990. *MMWR Morb Mortal Wkly Rep*. 1991;40:739–741.
52. Cheng WS, Wingard DL, Kritz-Silverstein D, Barrett-Connor E. Sensitivity and specificity of death certificates for diabetes: as good as it gets? *Diabetes Care*. 2008;31:279–284.
53. Kircher T, Nelson J, Burdo H. The autopsy as a measure of accuracy of the death certificate. *N Engl J Med*. 1985;313:1263–1269.