

RESEARCH ARTICLE

Influence of Body Mass Index and Albumin on Perioperative Morbidity and Clinical Outcomes in Resected Pancreatic Adenocarcinoma

Andrew Hendifar¹, Arsen Osipov¹, Jasleen Khanuja¹, Nicholas Nissen², Jason Naziri³, Wensha Yang³, Quanlin Li¹, Richard Tuli^{3*}

1 Department of Medicine, Cedars-Sinai Medical Center, Los Angeles, CA, United States of America,

2 Department of Surgery, Cedars-Sinai Medical Center, Los Angeles, CA, United States of America,

3 Department of Radiation Oncology, Cedars-Sinai Medical Center, Los Angeles, CA, United States of America

* Richard.Tuli@cshs.org



OPEN ACCESS

Citation: Hendifar A, Osipov A, Khanuja J, Nissen N, Naziri J, Yang W, et al. (2016) Influence of Body Mass Index and Albumin on Perioperative Morbidity and Clinical Outcomes in Resected Pancreatic Adenocarcinoma. PLoS ONE 11(3): e0152172. doi:10.1371/journal.pone.0152172

Editor: Jose G. Trevino, University of Florida, UNITED STATES

Received: October 9, 2015

Accepted: March 9, 2016

Published: March 25, 2016

Copyright: © 2016 Hendifar et al. This is an open access article distributed under the terms of the [Creative Commons Attribution License](https://creativecommons.org/licenses/by/4.0/), which permits unrestricted use, distribution, and reproduction in any medium, provided the original author and source are credited.

Data Availability Statement: All relevant data are contained within the paper.

Funding: The authors have no support or funding to report.

Competing Interests: The authors have declared that no competing interests exist.

Abstract

Obesity is a known risk factor for PDA and recent reports suggest obesity has a negative impact on clinical outcomes in patients with PDA. Pretreatment body mass index (BMI) and serum albumin (SA) have been shown to be associated with worse overall survival in patients with advanced and metastatic PDA. However, minimal data exists on the impact of BMI and SA on perioperative and long-term clinical outcomes in patients with early-stage resected PDA. Herein, we report on the impact of these variables on perioperative clinical outcomes, overall survival (OS) and disease free survival (DFS) in patients with resected PDA. With IRB approval, we evaluated 1,545 patients with PDA treated at a single institution from 2007–2013 and identified 106 patients who underwent upfront resection with curative intent. BMI and SA were calculated preoperatively and at the time of last clinical evaluation. Influence of preoperative BMI, SA, change in either variable, and influence of other clinical and pathologic variables on perioperative morbidity and mortality was assessed. The impact of these variables on DFS and OS was assessed with cox regression modeling and ANOVA. Actuarial estimates for DFS and OS were calculated using Kaplan-Meier methods. Median follow up time was 16 months (3–89). Mean age was 68 years. Median survival was 14 months (3–65) and median time to recurrence was 11 months (1–79). Length of hospital stay was associated with BMI ($p = .023$), change in BMI ($p = .003$) and SA ($p = .004$). Post-operative transfusion rate was associated with SA ($p = .021$). There was a strong correlation between BMI change and positive margin ($p = .04$) and lymph node status ($p = .01$). On multivariate analysis, change in SA ($p = .03$) and node positivity ($p = .008$) were associated with decreased DFS. Additionally, preoperative SA ($p = .023$), node positivity ($p = .026$) and poor differentiation ($p = .045$) were associated with worse OS on multivariate analysis. Low preoperative SA was associated with worse DFS and OS in patients with resected PDA. Lower BMI and SA were associated with longer post-operative hospital stay. Our study is one of the first to describe how pre-operative BMI and SA and

post-operative changes in these variables impact clinical and perioperative outcomes. This data supports nutritional status and weight loss as predictors of outcome in resected pancreatic cancer patients and warrants further prospective investigation.

Introduction

Pancreatic ductal adenocarcinoma (PDA) is the 4th leading cause of cancer death [1]. Despite advances in the treatment and management of this malignancy, 5-year survival is still only 6%. Patients who have early stage disease are often those with the best outcomes [2, 3]. Therefore, increased attention has been paid to known risk factors for this disease including family history [4, 5], diabetes [6, 7] and obesity.

Obesity is a known risk factor for the development of PDA [8–12]. Obesity associated PDA has also been linked with decreased physical activity [8, 13] and younger age of onset [14]. Recent reports also suggest that obesity has a negative impact on outcomes in patients with a known diagnosis of PDA [15]. However, a mechanistic explanation for the association between obesity and pancreatic cancer development remains under investigation.

A recent meta-analysis has shown that pretreatment serum albumin (SA) is also prognostic of outcome in patients receiving anti-cancer therapy for PDA [16]. Whereas prediagnostic body mass index (BMI) and SA have been shown to be associated with decreased overall survival in patients with advanced disease, its impact on perioperative and long-term clinical outcomes in patients with early stage resected PDA have not been thoroughly evaluated. We therefore assessed the impact of BMI and SA on perioperative clinical outcomes, overall (OS) and disease-free survival (DFS) in patients with resected PDA.

Methods

With Cedars-Sinai Medical Center Institutional Review Board approval, we evaluated the medical records of 1,545 PDA patients treated at our institution from 2007–2013. Of these, we identified 106 patients with long-term follow up who underwent resection with curative intent. Patient records and information were anonymized and de-identified prior to analysis. Patients with ampullary, duodenal, distal bile duct, neuroendocrine, and cystic neoplasms were excluded. Patient follow-up was obtained through office and electronic medical records and retrieval of death certificates of patients living within the USA. Clinical and pathologic variables assessed included patient demographics, stage, nodal involvement, margin status, tumor grade, and type of adjuvant therapy (Table 1).

Immediate pre-operative, 30-day post-operative and last recorded BMI and SA values were assessed and used to calculate BMI- and SA-change, respectively. Pre-operative BMI was categorized as follows: < 19, 19–29, > / = 30. BMI change was defined as the difference between the last BMI measured and the BMI at surgery (BMI (last known)–BMI (surgery)). The same methodology was used to calculate change in SA. Pre-operative SA was categorized as < 3.5 or > / = 3.5. SA was also evaluated as a continuous variable.

Perioperative variables assessed included total operating time, intraoperative blood loss, transfusion requirement and length of stay. Rehospitalization rates and perioperative mortality were calculated at 30 and 60 days post-operatively. DFS was defined as the last date the patient was known to be alive and without clinical or radiographic evidence of recurrence. The impact of these variables on 30- and 60-day rehospitalization and/or mortality, DFS and OS was assessed using log-rank test and Cox proportional hazards model. Multivariable Cox regression

Table 1. Patient Disease Specific Characteristics.

Variable/Characteristic	N	Percent (%)	Mean
Age			68
Sex			
Male	54	51	
Female	52	49	
Race			
Caucasian	79	74.5	
African American	5	4.7	
Asian	11	10.4	
Hispanic	11	10.4	
Location			
A. Uncinate, Head Neck	90	84.9	
B. Body, Tail	15	14.2	
Combined (A+B)	1	0.1	
Type of Resection			
Pancreaticoduodenectomy	93	87.7	
Distal Pancreatectomy	13	12.3	
T Stage			
T1	2	1.9	
T2	10	9.4	
T3	91	85.9	
T4	3	2.8	
N Stage			
N0	34	32.1	
N1	72	67.9	
Margin Distance			
positive (tumor at ink)	18	17.0	
≤ 1 mm	50	47.2	
> 1 mm	38	35.8	
Adjuvant Therapy			
Chemotherapy	51	48.1	
Chemoradiation	45	42.5	
No Adjuvant Therapy	10	9.4	
Periportal Lymphadenectomy			
Yes	25	23.6	
No	81	76.4	
Periportal Lymph Nodes			
≥ 1	5	20	
None	20	80	
Perineural Invasion			
Present	94	92.2	
Not Present	8	7.8	
Lymphovascular invasion			
Present	59	59	
Not Present	41	41	
Tumor Grade			
1	17	16.5	

(Continued)

Table 1. (Continued)

Variable/Characteristic	N	Percent (%)	Mean
2	52	50.5	
3	34	33.0	

doi:10.1371/journal.pone.0152172.t001

was also used to adjust for confounders when assessing a predictor of interest. Association between variables was based on logistic regression or two sample t tests. P value < 0.05 was considered statistically significant.

Results

The median follow up time for the 106 resected PDA patients was 16 months (2.5–89). Forty nine percent (n = 52) were women. Patient ethnicities in this analysis included Caucasian (75%), Hispanic (10%), Asian (10%) and African American (5%). The mean age of the patients was 68. Patients were categorized as having primary tumors in the proximal (head/neck/uncinate) or distal pancreas (body/tail). The majority of patients had a proximal lesion (85%) and 88% underwent a pancreaticoduodenectomy, as opposed to a distal pancreatectomy. Most patients (85%) had T3 disease (N = 90) and 66% were node positive (n = 35) with 64% having stage 2B disease (n = 68). Margin positivity defined as tumor at ink was identified in 17% (n = 18). The number of positive nodes resected ranged from 0–21 with a median of 19 nodes resected and 2 nodes positive. Additional clinical and pathologic data is included in [Table 1](#). Among patients who expired (N = 44), the median survival time was 14.1(3.4–64.7) months. Median time to recurrence was 11.1 months (0.9–78.3) months.

Of the 106 patients included in the study, pre-operative BMI was < 19, 19–29, and ≥ 30 in 11, 77 and 12 patients, respectively. Pre-operative SA was < 3.5 or ≥ 3.5 in 57 and 40 patients, respectively. Either pre-operative or post-operative data for BMI and SA was not available for 6 and 9 patients, respectively. Median pre-operative BMI was 24.1 (14–47.9) and the median change was -1.6. Median pre-operative SA was 3.3 (1.7–4.9) and median change was -0.4. Median operation time was 8.1 hours (3.1–15.7) and blood loss was 500 cc (100–1500). Median hospital stay was 8 days (3–90). Median units of transfused blood was 0 (0–5).

Peri-Operative Rehospitalization and Morbidity

Twenty-one patients (20%) were hospitalized within 30 days of pancreatic surgery. Following univariate analysis, no reliable predictors for re-hospitalization within 30 days were identified. Specifically, blood loss, operative time, age, and pre-operative SA and BMI were not associated with re-hospitalization. Rehospitalization within 30 days was not associated with worse DFS or OS. No patients died within the 30 or 60-day post-operative period

Notably, very few peri-operative outcomes were associated with pre-treatment SA, BMI or changes in either variable. However, length of hospital stay was associated with low BMI (p = 0.023), low SA (p = 0.004), and a reduction in BMI (p = 0.003). Post-operative transfusion rate was also associated with SA (p = 0.021) but not BMI. The length of the operation was associated with neither factor. Interestingly, there was a strong correlation between BMI change and positive margin (p = 0.04) and lymph node status (p = 0.01). SA was not associated with margin status, lymph node status, histologic grade or receipt of adjuvant therapy. Whereas no association between BMI and SA, or change in BMI to change in SA was identified, strong associations between pre-treatment BMI and change in BMI (rho = -0.5, p<0.001), and SA and change in SA were found (rho = -0.56, p<0.001).

Disease-free and overall survival analysis

Following univariate analysis, nodal involvement and histologic grade were associated with disease-free survival (DFS; $p < 0.05$; Fig 1), while pre-treatment CA 19-9, race, and pathologic tumor size were borderline significant predictors of inferior DFS. Patients with nodal disease had decreased DFS (HR 2.36, $P = 0.006$), as did those with poorly differentiated tumors (HR 2.83, $P = 0.017$). Interestingly, neither BMI, albumin, nor change in either parameter was associated with DFS ($P = 0.43, 0.30, 0.36, 0.18$). Multivariate cox proportional model was utilized to further evaluate predictors of DFS. After controlling for pre-treatment CA 19-9, nodal

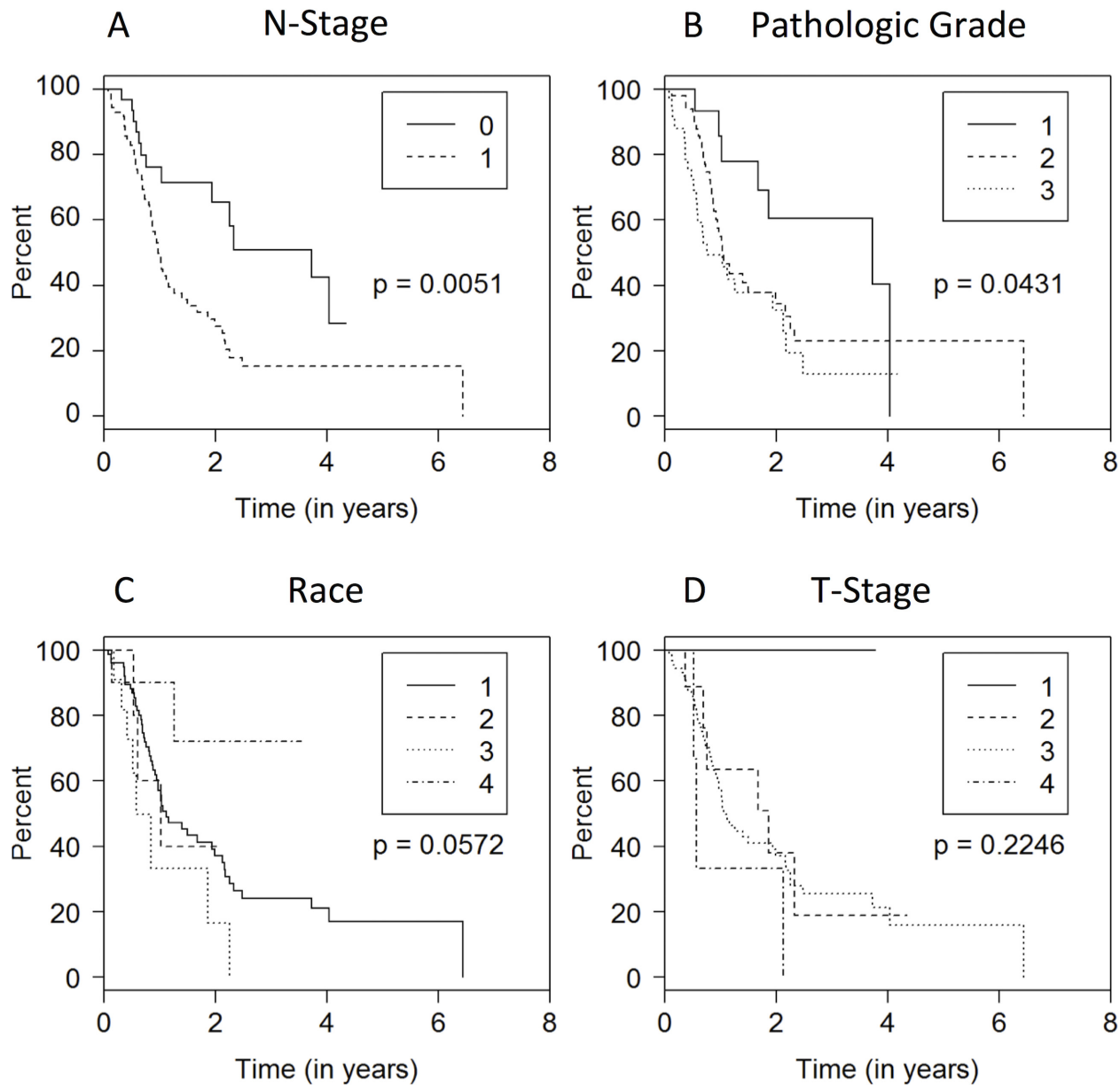


Fig 1. Patient and disease factors associated with disease free survival. (A) Disease Free Survival with Node Stage 0 (0) vs Node Stage 1 (1). (B) Disease Free Survival of histologic Grade utilizing three tier grading (1: well differentiated, 2: intermediate differentiation, poorly differentiated). (C) Disease Free Survival Among various races (1: Caucasian, 2: African American, 3: Asian, 4: Hispanic). (D) Disease Free Survival Across Tumor Stage (T1-T4).

doi:10.1371/journal.pone.0152172.g001

Table 2. Parameter Estimates from Multivariate Cox Regression Model for Disease-free Survival.

	Coefficient	Hazard Ratio	p-value
Albumin Change	0.171	1.186	0.232
Nodal Positivity	1.077	2.935	0.009
preCA19(log)	0.178	1.195	0.098
PathSize	0.224	1.252	0.096
Race: Africian American	-0.426	0.653	0.573
Race: Asian	0.430	1.527	0.478
Race: Hispanic	-1.803	0.165	0.082

doi:10.1371/journal.pone.0152172.t002

involvement, change in SA, pathologic stage (T), sex, race, and tumor differentiation, change in SA was associated with DFS. Change in SA, as a continuous variable ($p = 0.03$), and nodal positivity ($p = 0.009$) were associated with decreased DFS (Table 2). Additionally, a decrease in SA in excess of 0.6 g/dL led to significantly worse DFS (HR = 2.2; CI 1.11–4.37, $p = 0.024$)

Predictors for increased mortality were also examined using univariate analysis. Patients with pre-operative SA < 3.5 had worse OS when compared to those with a SA ≥ 3.5 (HR 0.48 $P = 0.04$), as did patients with poorly differentiated tumors compared to well-differentiated tumors (HR 5.44, $P = 0.0067$) (Fig 2). When we examined albumin as a continuous variable we also found a significant association with OS ($p = 0.0101$). However, pre-operative BMI and BMI change were not associated with worse OS overall.

A multivariate cox proportional model was used to further evaluate the interaction between covariates (Table 3). In our multivariate model, preoperative SA when evaluated as either a binary or continuous variable was significantly associated with OS. The number of positive nodes ($P = 0.026$) and poor differentiation ($P = 0.045$) were also associated with worse OS.

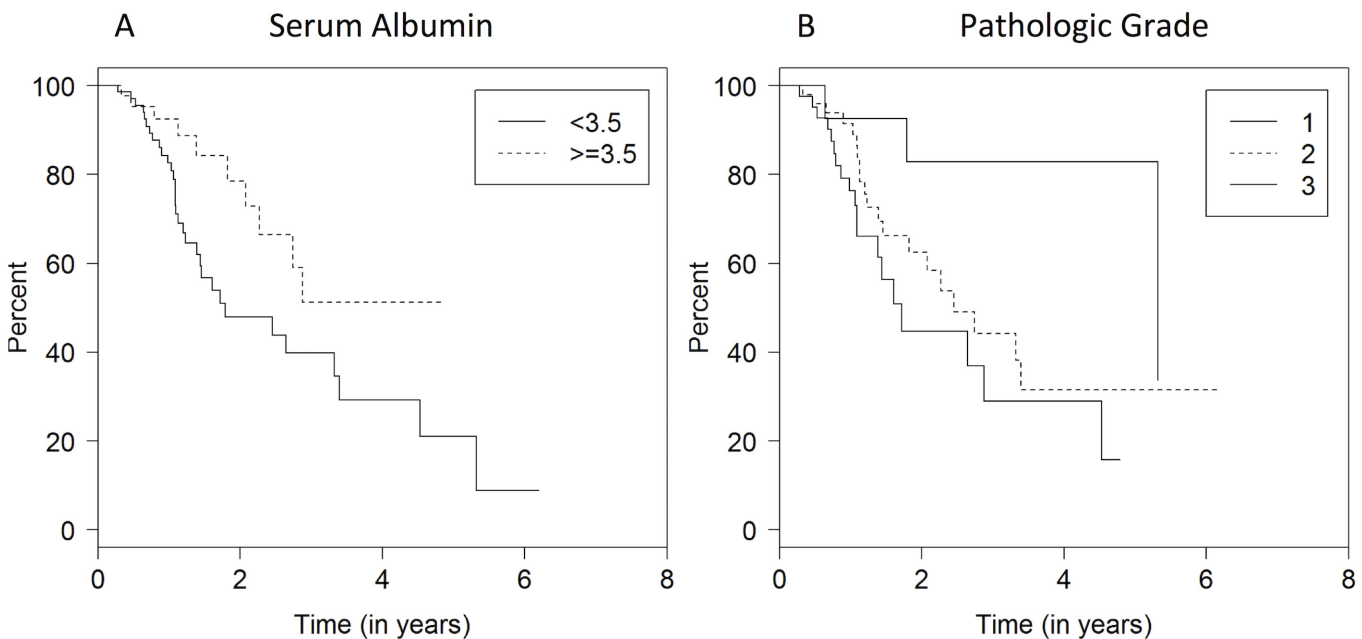


Fig 2. Predictors of increased mortality, SA and histologic grade. (A). Overall survival of patients with SA < 3.5 vs those with SA ≥ 3.5 . (B) Overall Survival of Histologic Grade utilizing three tier grading (1: well differentiated, 2: intermediate differentiation, 3: poorly differentiated).

doi:10.1371/journal.pone.0152172.g002

Table 3. Parameter Estimates from Multivariate Cox Regression Model for Overall Survival.

	Coefficient	Hazard Ratio	p-value
Preoperative	-0.729	0.483	0.008
Number of Positive Nodes	0.079	1.083	0.026
PathSize	0.171	1.186	0.232
Grade/Differentiation: 2	0.909	2.483	0.154
Grade/Differentiation: 3	1.323	3.753	0.045

doi:10.1371/journal.pone.0152172.t003

Discussion

We report for the first time that higher pre-operative SA is associated with greater OS in a cohort of patients with resected pancreatic cancer. Additionally, a significant decrease in pre-operative SA led to statistically significant decrease in DFS. This benefit does not appear to be related to quality indicators for peri-operative outcomes including blood loss, margin status, or 30-day re-hospitalization. There was an association between lower SA and transfusion rate and length of hospital stay of questionable clinical significance.

Interestingly, we did not find that an elevated BMI was associated with decreased DFS or OS. Whereas pretreatment BMI, SA and change in these variables had no effect on blood loss, transfusion rate, or 30-day re-hospitalization, they did result in significantly prolonged hospital stays. Additionally, we noted that a reduction in BMI was significantly associated with negative pathologic factors, including positive nodal disease and margins.

The concept that poor nutritional status would be associated with worse outcomes makes intuitive sense. Pre-operative SA is generally considered to be a well-studied and reliable predictor of surgical outcomes [17]. We comprehensively assessed peri-operative clinical outcomes and tumor characteristics but did not find any covariates to explain this relationship further. One would assume that a patient with poor nutrition status would have increased hospitalization rates or increased perioperative morbidity. However, our data suggests that decreased albumin is a poor prognostic factor independent of perioperative morbidity especially in excess 0.6 g/dL. This may potentially reflect more aggressive cancer biology. The relationship between pancreatic cancer cachexia and aggressive tumor biology has been previously reported [18].

Anorexia/cachexia syndrome is a widely described process in pancreatic adenocarcinoma patients [19]. This syndrome is characterized by weight loss, muscle wasting, and poor nutritional status [20]. These patients uniformly have worse outcomes [21]. Unfortunately, there are no therapies to date that have established efficacy for cachexia in this patient population. Muscle loss or sarcopenia is thought to be the worst prognostic indicator in this syndrome. Sarcopenia, as assessed radiographically by total psoas area (TPA) and Hounsfield Unit Average Calculation of the psoas muscle, has been associated with worse outcomes in prostate, renal cell, and pancreatic cancer patients treated with chemotherapy [22–23]. Using lowest quartile TPA as an indicator of sarcopenia in resected pancreatic cancer patients, Peng et al. found it to be independently associated with a 63% increased risk of death at 3 years relative to non-sarcopenic patients [24]. Interestingly and similar to our data with SA and BMI, the authors found no association between sarcopenia and worse perioperative and short-term morbidity. This was hypothesized to be a result of a low absolute rate of such events in the entire cohort. In a follow up to this study, total psoas volume (TPV) was compared to TPA and identified to as an independent predictor of both postoperative complications and long-term survival [25]. Whereas these modalities have not been prospectively validated, they may potentially serve to risk stratify patients in the post-operative setting and aid in selecting appropriate adjuvant

treatment strategies. There is emerging evidence that strictly classifying resection margins as negative (R0; no tumor at ink) or positive (R1; tumor at ink) according to the UICC definition may not provide adequate prognostic information as it relates to likelihood of locoregional recurrence [26]. Indeed, previous studies have reported vastly different rates of R1 resections (20–80%) based on the pathologic criteria utilized (Royal College of Pathologists or UICC [26, 27]). In our cohort, resection margins classified utilizing the Royal College of Pathologists and UICC definitions resulted in R1 resection rates of 64% and 17%, respectively. Given the potential prognostic significance of a close margin (<1 mm), we have reclassified this subgroup of patients accordingly [27, 28].

Our study is one of the first to describe how pre-operative BMI and SA and post-operative changes in these variables impact clinical and perioperative outcomes any may be suitable to identify high-risk pancreatic cancer patients. This data supports nutritional status and weight loss as prognostic of outcome in resected pancreatic cancer patients and warrant further prospective investigation.

Author Contributions

Conceived and designed the experiments: AH RT. Performed the experiments: AH AO JK NN JN WY RT. Analyzed the data: AH AO JK NN WY QL RT. Contributed reagents/materials/analysis tools: AH RT. Wrote the paper: AH AO QL RT.

References

1. Siegel R, Ma J, Zou Z, Jemal A. Cancer statistics, 2014. *CA Cancer J Clin*. 2014; 64(1):9–29. doi: [10.3322/caac.21208](https://doi.org/10.3322/caac.21208) PMID: [24399786](https://pubmed.ncbi.nlm.nih.gov/24399786/).
2. Ariyama J, Suyama M, Satoh K, Sai J. Imaging of small pancreatic ductal adenocarcinoma. *Pancreas*. 1998; 16(3):396–401. PMID: [9548685](https://pubmed.ncbi.nlm.nih.gov/9548685/).
3. Carpelan-Holmstrom M, Nordling S, Pukkala E, Sankila R, Luttges J, Kloppel G, et al. Does anyone survive pancreatic ductal adenocarcinoma? A nationwide study re-evaluating the data of the Finnish Cancer Registry. *Gut*. 2005; 54(3):385–7. doi: [10.1136/gut.2004.047191](https://doi.org/10.1136/gut.2004.047191) PMID: [15710987](https://pubmed.ncbi.nlm.nih.gov/15710987/); PubMed Central PMCID: PMC1774412.
4. Schenk M, Schwartz AG, O'Neal E, Kinnard M, Greenson JK, Fryzek JP, et al. Familial risk of pancreatic cancer. *J Natl Cancer Inst*. 2001; 93(8):640–4. PMID: [11309441](https://pubmed.ncbi.nlm.nih.gov/11309441/).
5. Silverman DT, Schiffman M, Everhart J, Goldstein A, Lillemoe KD, Swanson GM, et al. Diabetes mellitus, other medical conditions and familial history of cancer as risk factors for pancreatic cancer. *Br J Cancer*. 1999; 80(11):1830–7. doi: [10.1038/sj.bjc.6690607](https://doi.org/10.1038/sj.bjc.6690607) PMID: [10468306](https://pubmed.ncbi.nlm.nih.gov/10468306/); PubMed Central PMCID: PMC2363127.
6. Batabyal P, Vander Hoorn S, Christophi C, Nikfarjam M. Association of diabetes mellitus and pancreatic adenocarcinoma: a meta-analysis of 88 studies. *Ann Surg Oncol*. 2014; 21(7):2453–62. doi: [10.1245/s10434-014-3625-6](https://doi.org/10.1245/s10434-014-3625-6) PMID: [24609291](https://pubmed.ncbi.nlm.nih.gov/24609291/).
7. Stolzenberg-Solomon RZ, Graubard BI, Chari S, Limburg P, Taylor PR, Virtamo J, et al. Insulin, glucose, insulin resistance, and pancreatic cancer in male smokers. *Jama*. 2005; 294(22):2872–8. doi: [10.1001/jama.294.22.2872](https://doi.org/10.1001/jama.294.22.2872) PMID: [16352795](https://pubmed.ncbi.nlm.nih.gov/16352795/).
8. Michaud DS, Giovannucci E, Willett WC, Colditz GA, Stampfer MJ, Fuchs CS. Physical activity, obesity, height, and the risk of pancreatic cancer. *Jama*. 2001; 286(8):921–9. PMID: [11509056](https://pubmed.ncbi.nlm.nih.gov/11509056/)
9. Coughlin SS, Calle EE, Patel AV, Thun MJ. Predictors of pancreatic cancer mortality among a large cohort of United States adults. *Cancer causes & control: CCC*. 2000; 11(10):915–23. PMID: [11142526](https://pubmed.ncbi.nlm.nih.gov/11142526/).
10. Arslan AA, Helzlsouer KJ, Kooperberg C, Shu XO, Stepowski E, Bueno-de-Mesquita HB, et al. Anthropometric measures, body mass index, and pancreatic cancer: a pooled analysis from the Pancreatic Cancer Cohort Consortium (PanScan). *Archives of internal medicine*. 2010; 170(9):791–802. doi: [10.1001/archinternmed.2010.63](https://doi.org/10.1001/archinternmed.2010.63) PMID: [20458087](https://pubmed.ncbi.nlm.nih.gov/20458087/); PubMed Central PMCID: PMC2920035.
11. Larsson SC, Orsini N, Wolk A. Body mass index and pancreatic cancer risk: A meta-analysis of prospective studies. *Int J Cancer*. 2007; 120(9):1993–8. doi: [10.1002/ijc.22535](https://doi.org/10.1002/ijc.22535) PMID: [17266034](https://pubmed.ncbi.nlm.nih.gov/17266034/).
12. Aune D, Greenwood DC, Chan DS, Vieira R, Vieira AR, Navarro Rosenblatt DA, et al. Body mass index, abdominal fatness and pancreatic cancer risk: a systematic review and non-linear dose-

- response meta-analysis of prospective studies. *Ann Oncol*. 2012; 23(4):843–52. doi: [10.1093/annonc/mdr398](https://doi.org/10.1093/annonc/mdr398) PMID: [21890910](https://pubmed.ncbi.nlm.nih.gov/21890910/).
13. Luo J, Margolis KL, Adami HO, LaCroix A, Ye W, Women's Health Initiative I. Obesity and risk of pancreatic cancer among postmenopausal women: the Women's Health Initiative (United States). *Br J Cancer*. 2008; 99(3):527–31. doi: [10.1038/sj.bjc.6604487](https://doi.org/10.1038/sj.bjc.6604487) PMID: [18628761](https://pubmed.ncbi.nlm.nih.gov/18628761/); PubMed Central PMCID: PMC2527801.
 14. Li D, Morris JS, Liu J, Hassan MM, Day RS, Bondy ML, et al. Body mass index and risk, age of onset, and survival in patients with pancreatic cancer. *Jama*. 2009; 301(24):2553–62. doi: [10.1001/jama.2009.886](https://doi.org/10.1001/jama.2009.886) PMID: [19549972](https://pubmed.ncbi.nlm.nih.gov/19549972/); PubMed Central PMCID: PMC2760963.
 15. Yuan C, Bao Y, Wu C, Kraft P, Ogino S, Ng K, et al. Prediagnostic body mass index and pancreatic cancer survival. *J Clin Oncol*. 2013; 31(33):4229–34. doi: [10.1200/JCO.2013.51.7532](https://doi.org/10.1200/JCO.2013.51.7532) PMID: [24145341](https://pubmed.ncbi.nlm.nih.gov/24145341/); PubMed Central PMCID: PMC3821012.
 16. Pant S, Martin LK, Geyer S, Wei L, Van Loon K, Sommovilla N, et al. Baseline serum albumin is a predictive biomarker for patients with advanced pancreatic cancer treated with bevacizumab: a pooled analysis of 7 prospective trials of gemcitabine-based therapy with or without bevacizumab. *Cancer*. 2014; 120(12):1780–6. doi: [10.1002/cncr.28648](https://doi.org/10.1002/cncr.28648) PMID: [24633933](https://pubmed.ncbi.nlm.nih.gov/24633933/); PubMed Central PMCID: PMC4265390.
 17. Gibbs J, Cull W, Henderson W, Daley J, Hur K, Khuri SF. Preoperative serum albumin level as a predictor of operative mortality and morbidity: results from the National VA Surgical Risk Study. *Archives of surgery*. 1999; 134(1):36–42. PMID: [9927128](https://pubmed.ncbi.nlm.nih.gov/9927128/).
 18. Bachmann J, Ketterer K, Marsch C, Fechtner K, Krakowski-Roosen H, Buchler MW, et al. Pancreatic cancer related cachexia: influence on metabolism and correlation to weight loss and pulmonary function. *BMC cancer*. 2009; 9:255. doi: [10.1186/1471-2407-9-255](https://doi.org/10.1186/1471-2407-9-255) PMID: [19635171](https://pubmed.ncbi.nlm.nih.gov/19635171/); PubMed Central PMCID: PMC2741486.
 19. Fearon K, Strasser F, Anker SD, Bosaeus I, Bruera E, Fainsinger RL, et al. Definition and classification of cancer cachexia: an international consensus. *Lancet Oncol*. 2011; 12(5):489–95. doi: [10.1016/S1470-2045\(10\)70218-7](https://doi.org/10.1016/S1470-2045(10)70218-7) PMID: [21296615](https://pubmed.ncbi.nlm.nih.gov/21296615/).
 20. Tan CR, Yaffee PM, Jamil LH, Lo SK, Nissen N, Pandol SJ, et al. Pancreatic cancer cachexia: a review of mechanisms and therapeutics. *Front Physiol*. 2014; 5:88. doi: [10.3389/fphys.2014.00088](https://doi.org/10.3389/fphys.2014.00088) PMID: [24624094](https://pubmed.ncbi.nlm.nih.gov/24624094/); PubMed Central PMCID: PMC3939686.
 21. Hendifar AE, Rose-tan C, Yaffee P, Osipov A, Tuli R, Jeon C, editors. Evaluating outcomes of pancreatic cancer patients with cacehxia. 2014 ASCO Annual Meeting; 2014; Chicago, Illinois.
 22. Prado CM, Baracos VE, McCarger LJ, Reiman T, Mourtzakis M, Tonkin K, et al. Sarcopenia as a determinant of chemotherapy toxicity and time to tumor progression in metastatic breast cancer patients receiving capecitabine treatment. *Clin Cancer Res*. 2009; 15(8):2920–6. doi: [10.1158/1078-0432.CCR-08-2242](https://doi.org/10.1158/1078-0432.CCR-08-2242) PMID: [19351764](https://pubmed.ncbi.nlm.nih.gov/19351764/)
 23. Joglekar S, Asghar A, Mott SL, Johnson BE, Button AM, Clark E, et al. Sarcopenia is an independent predictor of complications following pancreatectomy for adenocarcinoma. *Journal of surgical oncology*. 2015; 111(6):771–5. doi: [10.1002/jso.23862](https://doi.org/10.1002/jso.23862) PMID: [25556324](https://pubmed.ncbi.nlm.nih.gov/25556324/); PubMed Central PMCID: PMC4406850.
 24. Peng P, Hyder O, Firoozmand A, Kneuert P, Schulick RD, Huang D, et al. Impact of sarcopenia on outcomes following resection of pancreatic adenocarcinoma. *Journal of gastrointestinal surgery: official journal of the Society for Surgery of the Alimentary Tract*. 2012; 16(8):1478–86. doi: [10.1007/s11605-012-1923-5](https://doi.org/10.1007/s11605-012-1923-5) PMID: [22692586](https://pubmed.ncbi.nlm.nih.gov/22692586/); PubMed Central PMCID: PMC3578313.
 25. Amini N, Spolverato G, Gupta R, Margonis GA, Kim Y, Wagner D, et al. Impact of total psoas volume on short- and long-term outcomes in patients undergoing curative resection for pancreatic adenocarcinoma: a new tool to assess sarcopenia. 2015; 19(9):1593–602. PMID: [25925237](https://pubmed.ncbi.nlm.nih.gov/25925237/).
 26. Verbeke CS. Resection margins in pancreatic cancer. *Pathologie*. 2013; 34 Suppl 2:241–7. PMID: [24196622](https://pubmed.ncbi.nlm.nih.gov/24196622/). doi: [10.1007/s00292-013-1799-5](https://doi.org/10.1007/s00292-013-1799-5)
 27. Campbell F, Smith RA, Whelan P, Sutton R, Raraty M, Neoptolemos JP, et al. Classification of R1 resections for pancreatic cancer: the prognostic relevance of tumour involvement within 1 mm of a resection margin. *Histopathology*. 2009; 55:277–83. PMID: [19723142](https://pubmed.ncbi.nlm.nih.gov/19723142/). doi: [10.1111/j.1365-2559.2009.03376.x](https://doi.org/10.1111/j.1365-2559.2009.03376.x)
 28. Esposito I, Kleeff J, Bergmann F, Reiser C, Herpel E, Friess H, et al. Most pancreatic cancer resections are R1 resections. *Ann Surg Oncol*. 2008; 15:1651–60. PMID: [18351300](https://pubmed.ncbi.nlm.nih.gov/18351300/). doi: [10.1245/s10434-008-9839-8](https://doi.org/10.1245/s10434-008-9839-8)