

Cite this: *Chem. Sci.*, 2019, 10, 5589

All publication charges for this article have been paid for by the Royal Society of Chemistry

Optimal coordination-site exposure engineering in porous platinum for outstanding oxygen reduction performance†

Han Cheng,^{‡a} Si Liu,^{‡a} Zikai Hao,^b Jingyu Wang,^a Bojun Liu,^a Guangyao Liu,^a Xiaojun Wu,^{Ⓜb} Wangsheng Chu,^c Changzheng Wu^{Ⓜ*a} and Yi Xie^{Ⓜa}

In this study, we report that optimal coordination-site exposure engineering in porous platinum brings ultrahigh activity and durability for the fuel cell oxygen reduction reaction (ORR). The porous platinum with numerous grain boundaries (GBP-Pt) consisting of 3 nm crystals exhibits 7 times higher ORR activity than commercial Pt. For fuel-cell measurements, the GBP-Pt catalyst based MEA exhibits high power density (1.49 W cm⁻², 0.71 A mg⁻¹ Pt for mass activity) and stability (12.9% loss after 30 K cycles), all of which far surpass the U.S. DOE target in 2020 (0.44 A mg⁻¹ Pt for mass activity and 40% loss for stability). Density Functional Theory (DFT) calculation and X-ray Absorption Fine Structure (XAFS) results suggest that proper Pt coordination site exposure in grain boundaries provides optimal adsorption energies for oxygen species and high stability in the ORR, even superior to Pt(111) sites. We anticipated that coordination-site exposure engineering would open a new avenue to offer robust electrocatalysts for the fuel-cell oxygen reduction reaction.

Received 4th March 2019

Accepted 26th April 2019

DOI: 10.1039/c9sc01078e

rsc.li/chemical-science

Introduction

Fuel cells, as an energy conversion system with high power density, offer an eco-friendly and efficient pathway to transfer the chemical energy of hydrogen to electric energy through electrochemical reactions.^{1–6} However, the oxygen reduction reaction (ORR) at the cathode, which involves a 4 electron transfer process, still impedes the efficiency of fuel cells.^{7–9} To mitigate this problem, platinum based materials have been widely used as electrocatalysts. Until now, noble metals have been playing an irreplaceable role in fuel cell technology, while their high cost and rarity limit their developments and practical applications.^{10–12} To decrease the quantity demanded for Pt, fabricating robust electrocatalysts with outstanding activity and durability has become crucial.^{13–15}

To date, the synthesis and fabrication of nanoparticles have been regarded as an ideal attempt for the design of efficient Pt electrocatalysts.^{16,17} During the past few years, progress has been made in liquid half-cell ORR tests by alloying,^{16,18} chemical doping,¹⁴ and adjusting Pt morphology and crystal facets.¹⁷ Despite these various strategies, the activity and stability of Pt based electrocatalysts are still limited, especially in highly corrosive fuel cell environments.¹⁹ According to the Sabatier principle, this restricted activity could be mainly attributed to the unsatisfactory adsorption energy of reaction intermediates on Pt sites.²⁰ It has been reported that adsorption energy for small species is well influenced by the coordination environment of the catalytic sites.²¹ However, almost all available electrocatalysts still suffer from the massive formation of low-coordination Pt sites in the synthesis or catalytic process,^{22,23} such as the edge exposure or dissolution of alloying metal in acid media.^{24,25} The bonding energy between low-coordination Pt sites and oxygen containing species is excessively strong, which reduces the free surface area for the ORR.^{26,27} These sites are also thermodynamically unstable and easier to dissolve,^{25,28} having a great negative impact on the durability of electrocatalysts. Thus, robust Pt electrocatalysts, with catalytic sites exploited to the maximum extent in activity and durability, are still highly desirable.

Herein, we report that optimal coordination-site exposure engineering in porous platinum could bring ultrahigh activity and durability for fuel cell oxygen reduction. The optimal Pt coordination-site exposure in grain boundaries provides suitable adsorption energies for oxygen species and high

^aHefei National Laboratory for Physical Science at the Microscale, iChEM (Collaborative Innovation Center of Chemistry for Energy Materials), CAS Key Laboratory of Mechanical Behavior and Design of Materials, University of Science and Technology of China, Hefei, Anhui, 230026, P. R. China. E-mail: czwu@ustc.edu.cn

^bCAS Key Laboratory of Materials for Energy Conversion, Department of Material Science and Engineering, University of Science and Technology of China, Hefei, Anhui 230026, P. R. China

^cNational Synchrotron Radiation Laboratory, University of Science and Technology of China, Hefei, Anhui 230029, P. R. China

† Electronic supplementary information (ESI) available. See DOI: 10.1039/c9sc01078e

‡ These authors contributed equally to this work.



thermodynamic stability, resulting in high intrinsic activity and durability in the ORR, even superior to Pt(111) sites. Our as-obtained grain-boundary porous platinum (GBP-Pt) consisting of 3 nm crystals exhibits 7 times higher ORR activity than commercial Pt. For application in fuel cells, the GBP-Pt catalyst based MEA exhibits high power density (1.49 W cm⁻², 0.71 A mg⁻¹ Pt for mass activity) and stability (12.9% loss after 30 K cycles), all of which far surpass the U.S. DOE target in 2020 (0.44 A mg⁻¹ Pt for mass activity and 40% loss for stability).

Results and discussion

Oxygen reduction reaction

Electrochemical oxygen reduction tests in acidic media were first performed to show the high catalytic performance of the as-obtained catalysts. For comparison, commercial Pt (Hesen) with the same 3 nm grain size as GBP-Pt was also tested. All these samples were mixed with Vulcan XC-72R carbon with 20 wt% Pt loading and the Pt content was determined by ICP-AES to be

about 20 μg_{Pt}/cm² for each electrode. As shown in Fig. 1a, in O₂-saturated HClO₄ solution, GBP-Pt-600 exhibits remarkably excellent activity, and the half-wave potential of GBP-Pt-600 is 0.941 V, which is 58 mV more positive than that of commercial Pt. Fig. 1b shows the cyclic voltammograms (CVs) of the GBP-Pt-600 sample and commercial Pt at room temperature in Ar-saturated 0.1 M HClO₄ at a sweep rate of 20 mV s⁻¹. A more positive peak of oxygen species desorption was observed for GBP-Pt-600, which represents reduced adsorption energy on the Pt surface in favor of the acidic ORR. As is well known, the strong bonding of oxygen and the Pt surface seriously impedes intrinsic activity of Pt in ORR catalysis.²⁹ To further investigate the intrinsic activity of each Pt site, specific activities of the catalysts were first calculated using the kinetic current densities and electrochemical surface area (ECSA) as shown in Fig. 1c. The ECSA of each electrocatalyst was obtained by calculating hydrogen under potential deposition (HUPD) charge from CV curves (Fig. S2†) between 0.1 V and 0.4 V (0.4–0.55 V background subtraction). The specific activity of GBP-Pt-600 was 1.70 ± 0.05 mA cm⁻², which was almost 7 times higher than that of commercial Pt (0.263 ± 0.03 mA cm⁻²) at 0.9 V vs. RHE, representing an ultra-high intrinsic activity of each Pt site in GBP-Pt-600. The mass activity quantified by ICP-AES for GBP-Pt-600 (0.68 ± 0.02 A mg⁻¹ Pt) at 0.9 V vs. RHE is 4 times greater than that of commercial Pt (0.16 ± 0.01 A mg⁻¹ Pt).

Stability is a more impressive key index for the GBP-Pt-600 electrocatalyst. The durability of GBP-Pt-600 was also measured through an accelerated durability test (ADT). As shown in Fig. 1e, inappreciable left shifts could be observed in the ORR polarization curves for the GBP-Pt-600 sample after 10 000 cycles compared to the beginning of life (BOL). Even as the cycles further extend to 30 000 cycles, only 13 mV of negative shift occurs. After the accelerated test for 30 000 cycles, the specific activity and mass activity of GBP-Pt-600 still remain at 1.613 mA cm⁻² (3.4% loss) and 0.649 A mg⁻¹ Pt (4.7% loss), respectively. By contrast, commercial Pt catalysts exhibited 100 mV potential shifts and lost 62.4% of their initial mass activities, respectively (Fig. S3†). Chronoamperometry measurement (*j*-*t*) was also performed at a constant voltage of 0.8 V in 0.1 M HClO₄. As shown in Fig. 1f, the current density of GBP-Pt-600 was maintained with 9% decay over 500 h of continuous operation, suggesting the unprecedented durability for our GBP-Pt-600 catalyst.

Fuel cell assembly

In terms of outstanding ORR performance, the GBP-Pt-600 sample was further used as the cathodic catalyst in fuel cell devices to meet the standard of the 2020 U.S. DOE target. The DOE-Fuel Cell Tech Team (DOE/FCTT) protocol was used in the study of fuel cell performance. Using O₂ as the oxidant, membrane electrode assemblies (MEAs) with the electrocatalysts were prepared through a hot-pressing method. For comparison, the loading of the commercial Pt catalyst was also adjusted to 0.2 mg cm⁻² Pt for the fuel cell test (Fig. 2a). As the cell voltage becomes 0.8 V, the H₂/O₂ fuel cell reaches a current density of 466 mA cm⁻², which is 142 mA cm⁻² higher than that

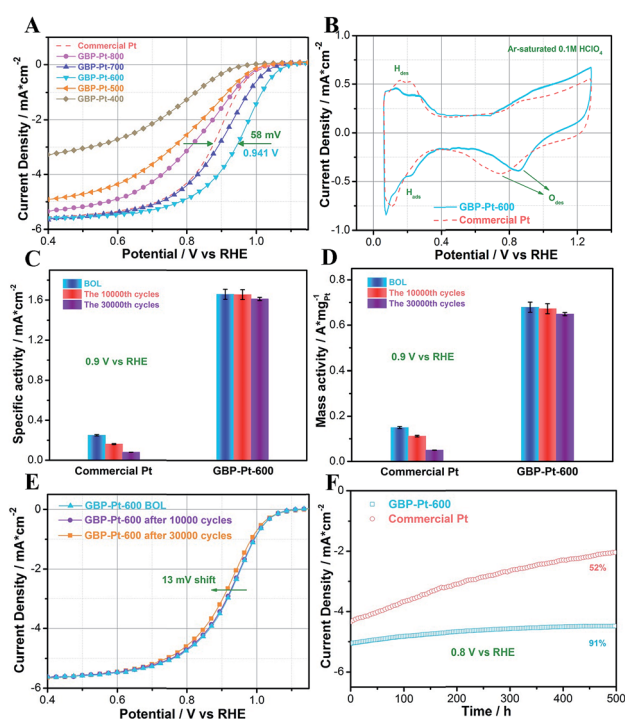


Fig. 1 (a) ORR polarization curves of GBP-Pt samples for different calcining temperatures and commercial Pt. (b) Cyclic voltammetry curves in Ar-saturated 0.1 M HClO₄ for GBP-Pt-600 and commercial Pt. (c) Specific activities of the GBP-Pt-600 sample and commercial Pt at BOL, 10 000 cycles, and 30 000 cycles, respectively. (d) Mass activities of the GBP-Pt-600 sample and commercial Pt at BOL, 10 000 cycles, and 50 000 cycles, respectively. (e) Cycling stability test for GBP-Pt-600 BOL, after 10 000 cycles and 30 000 cycles. (f) Chronoamperometry measurement of the GBP-Pt-600 sample and commercial Pt. All these samples were mixed with Vulcan XC-72R carbon with 20 wt% Pt loading and the Pt content was 20 μg_{Pt}/cm² for each electrode. Solution ohmic drop (*i*R-drop) was compensated and capacitive background current was corrected by subtracting the curve recorded in Ar-saturated solution.



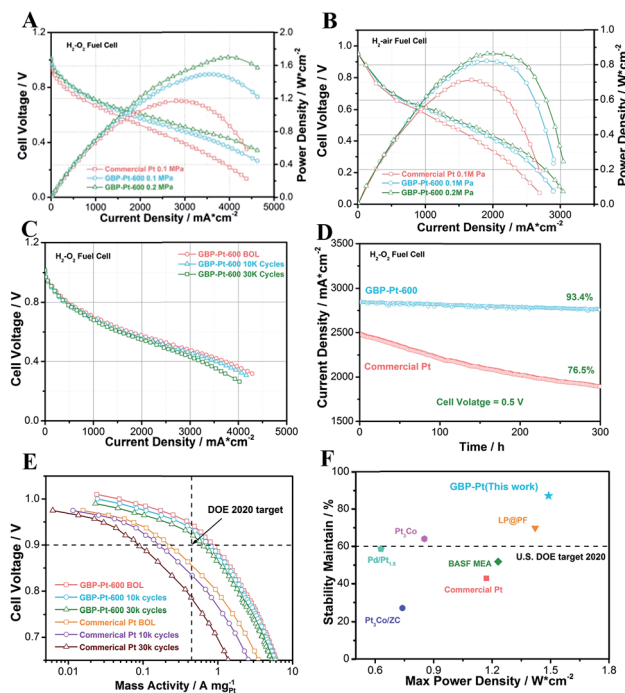


Fig. 2 (a) H_2/O_2 fuel cell polarization curves of the GBP-Pt-600 sample and commercial Pt at a back pressure of 0.1 MPa and 0.2 MPa. (b) H_2/air fuel cell polarization curves of the GBP-Pt-600 sample and commercial Pt at a back pressure of 0.1 MPa. (c) Accelerated durability test (ADT) at 358 K with scanning currents from 0 A to 5 A at BOL, 10 000 cycles, and 30 000 cycles, respectively. (d) H_2/O_2 fuel cell test in a constant-potential operation. (e) Mass activities of the GBP-Pt-600 sample and commercial Pt under H_2/O_2 fuel cell conditions. (f) The comparison between GBP-Pt-600 and remarkable electrocatalysts in fuel cells. The loading of Pt content was 0.2 mg cm^{-2} for each sample and H_2 , O_2 , and air flow rates were 0.4 L min^{-1} at 100% RH.

of commercial Pt (324 mA cm^{-2}). The maximum peak power density for GBP-Pt-600 was 1.49 W cm^{-2} , which was 310 mW cm^{-2} higher than that of commercial Pt, reaching the highest power density among previous literature. The mass activity at 0.9 V for GBP-Pt-600 ($0.71 \pm 0.04 \text{ A mg}^{-1} \text{ Pt}$) also exceeded the U.S. DOE target in 2020 ($0.44 \text{ A mg}^{-1} \text{ Pt}$) (Fig. 2e). For more practical application, the H_2/air fuel cell was also tested for these samples. An obvious improvement of 150 mW cm^{-2} could also be observed in power density for the GBP-Pt-600 sample (Fig. 2b). To satisfy a power system, the long-term durability of GBP-Pt-600 needs to reach the standard for the fuel cell conditions. After ADT tests under working conditions of 358 K with scanning currents from 0 A to 5 A, only 12.9% loss in mass activity could be observed after 30 K cycles under H_2/O_2 conditions (Fig. 2c), absolutely meeting the DOE 2020 target on catalytic durability (smaller than 40% loss in mass activity). Moreover, in a constant-potential operation test at a high working current, the current density loss was negligible after 300 h (Fig. 2d), also suggesting the outstanding durability of GBP-Pt-600. Compared to remarkable electrocatalysts in reported literature, our GBP-Pt-600 catalyst possesses outstanding activity and stability (Fig. 2f).^{30–32}

Mechanism investigation

To better understand the correlation between the remarkable electrochemical performance and catalyst structure, detailed analyses of GBP-Pt-600 were further performed. The reduced adsorption energy of oxygen species on the Pt surface and high specific activity in Fig. 1 show the high intrinsic activity of each Pt site in GBP-Pt-600. Density Functional Theory (DFT) calculation was first employed to obtain atomic-scale insight into the high intrinsic activity. As stated in the Sabatier principle, the ORR activity appears as volcano-type plots against surface adsorption energies of key reaction intermediates. An optimal ORR catalyst must bind hydroxyl species ($^*\text{OH}$) with a ΔG of $\sim 0.87 \text{ eV}$. In a geometric structure of a simple substance, trends in adsorption energies for small species on surfaces are well described by the coordination number of the surface sites. In our case, since abundant grain boundaries exist in porous platinum, the coordination number and adsorption energies in grain-boundary sites were investigated to explain the different intrinsic activities. The “generalized” coordination number $\overline{\text{CN}}$ was calculated to eliminate “finite-size effects” by introducing a weight to each first-nearest neighbor atom j ,³³ corresponding to its own coordination number $[\text{cn}(j)]$. The formula to estimate

$$\overline{\text{CN}} \text{ for a site } i = \sum_{j=1}^{ni} \text{cn}(j) / \text{cn}. \text{ As shown in Fig. 3a,}$$

taking the “a” site as an example, the $\overline{\text{CN}}$ of the “a” site in a single Pt grain is 4.25. While two grains attach to form a grain boundary, the $\overline{\text{CN}}$ value of the “A” site in the grain boundary increases to 8. Based on the obtainment of the $\overline{\text{CN}}$ value, the adsorption energies of key intermediate species on Pt sites were further evaluated (Fig. 3b). The adsorption energies of intermediates present a linear relationship against the change of $\overline{\text{CN}}$ values in different Pt sites. The ΔG for hydroxyl species ($^*\text{OH}$) is determined to be 0.111 eV in edge “a” sites while it changes to 0.821 eV in grain boundaries “A”, which approaches close to the optimal value 0.87 eV . Moreover, the two possible rate-determining steps in the ORR are also investigated in Fig. 3c. It can be seen that the “A” site in the grain boundary shows optimal Gibbs free energy and activity for the ORR compared to other sites, even better than Pt(111) sites. Based on these results, optimal adsorption energies of key intermediate species for the ORR could be realized by introducing grain boundary sites.

To further verify the change of coordination number (cn) in grain boundaries, X-ray Absorption Fine Structure (XAFS) analysis of Pt L_3 -edge $k^3\chi(k)$ oscillations in GBP-Pt-600 was performed as shown in Fig. 3d. As control samples, commercial Pt with the same grain diameter ($\sim 3 \text{ nm}$) and Pt foil were also investigated to show the different cn values. It is found that the oscillation intensity of GBP-Pt-600 is higher than that of 3 nm nanoparticles in commercial Pt and lower than that of Pt foil. The Fourier transformed (FT) curves (Fig. 3e) further clarified this amplitude variation. The FT curves of GBP-Pt-600 and the foil are dominated by a strong peak at about 2.64 \AA , associated with a satellite peak (at about 2.12 \AA) ahead which usually exists in the FT-EXAFS at the K-edge of most heavy metals.³⁴ This FT



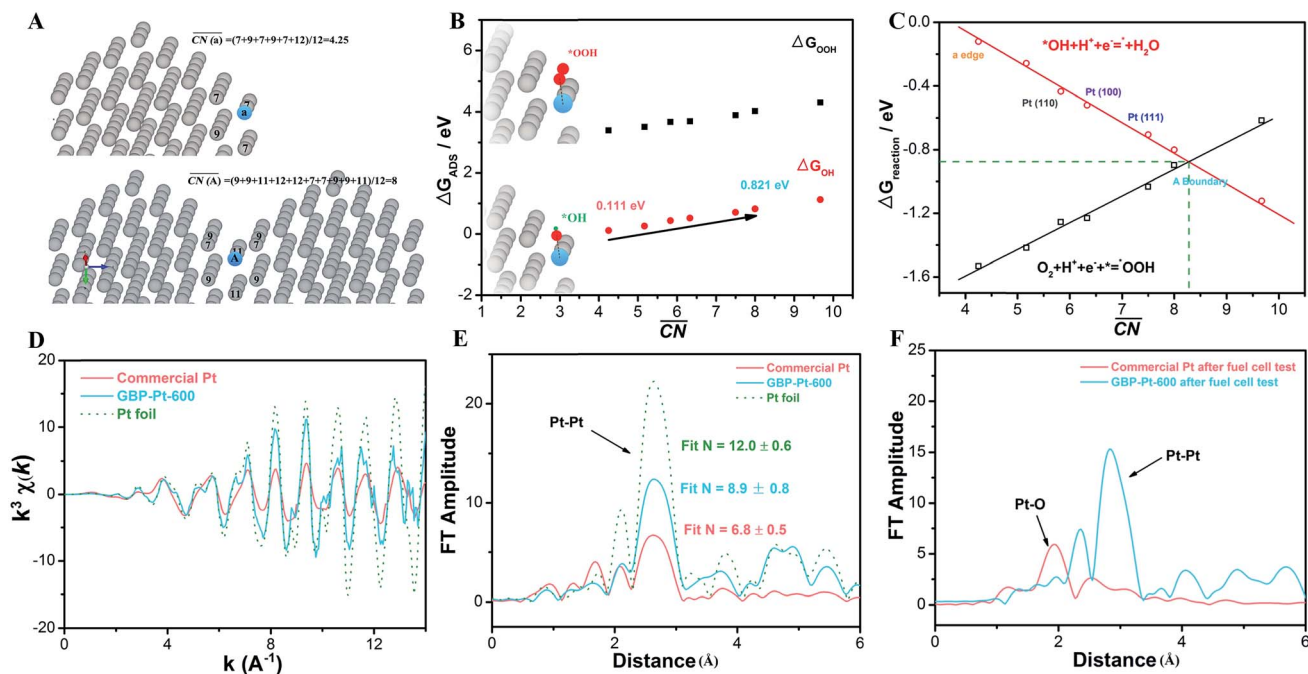


Fig. 3 The “generalized” coordination number \overline{CN} calculation for “a” single cluster and “A” grain boundary sites. (b) The adsorption energies of key intermediates species on different \overline{CN} Pt sites. (c) The calculation for Gibbs free energy in two possible rate-determining steps for the ORR. (d) Pt L_{3} -edge $k^3\chi(k)$ oscillation curves for GBP-Pt-600, commercial Pt and Pt foil as the reference. (e) The Pt L_{3} -edge EXAFS Fourier transformed curves for GB.

peak corresponds to the Pt–Pt bond. For commercial Pt with ~ 3 nm grain diameter, a peak at 1.68 \AA was detected besides the Pt–Pt pair. It is a typical interaction between Pt and light elements, attributed to the strong adsorption of Pt sites.³⁵ In order to quantitatively extract the local structures, the EXAFS data were fitted in the R space using the IFEFFIT code. The quality and the result of the fits have been shown in Fig. S4† and Table S1,† respectively. The EXAFS fit of the Pt foil gave a standard local atomic structure, a Pt center coordinated by 12 Pt atoms at 2.76 \AA with a slight distortion $\sigma^2 = 0.0047 \text{ \AA}^2$. The reduced EXAFS oscillation of the commercial 3 nm Pt sample mainly came from the low coordination number of Pt (average coordination number N is 6.8). These undercoordinated Pt atoms tend to adsorb oxygen to saturate the coordination environment so that a Pt–O peak could be observed. As for the GBP-Pt-600 sample, a relatively high peak for Pt–Pt could still be observed. This indicated that the high Pt coordination number ($N = 8.9$) was still retained in GBP-Pt-600, which is beneficial for the activity and stability of the ORR. It should be noticed that the coordination numbers measured by XAFS are average values, which would be higher than the surface value (DFT calculation). In addition, an increased coordination number could be observed by high-angle annular dark-field scanning transmission electron microscopy (HAADF-STEM). As shown in Fig. S5,† the blue and yellow balls represent the Pt atoms of two different grains. The Pt atoms in the grain boundary sites retained a relatively higher coordination number on the edge than on the isolated crystal. *Ex situ* EXAFS measurements were also performed to show the influence of coordination environments on electrocatalytic durability. The comparison of the R

space for GBP-Pt-600 and commercial 3 nm Pt after the fuel cell test is provided in Fig. 3f where a significant increase of the Pt–O peak could be observed in commercial Pt. It has been reported that the dissolution of Pt mainly hinges on the quantity of Pt–O species and decreasing the formation of Pt oxide is vital for reducing Pt atom dissolution.^{36,37} But for our GBP-Pt-600 sample, Fourier transformed (FT) curves show no obvious change after the fuel cell test, which indicated high durability during the acidic oxygen reduction reaction (Fig. S6†).

Structure analyses

Besides the optimal coordination site exposure, plenty of grain boundaries in GBP-Pt-600 also brought a high surface area for enhanced electrocatalytic activity. The Brunauer–Emmett–Teller (BET) analysis (Fig. 4a) first provides solid evidence that the GBP-Pt-600 catalyst possesses a high surface area of $45.32 \text{ m}^2 \text{ g}^{-1}$. Moreover, a pore distribution (Fig. 4b) of 1.53 nm micropores could also be observed, which could accelerate the gas diffusion during the catalytic process. This porous structure with high surface area was further observed in transmission electron microscopy (TEM) images (Fig. S7†). Each porous Pt consisted of crystalline grains with a size of about 3 nm , forming a 2D-foam-like structure with a large number of boundaries and pores. High-resolution transmission electron microscopy (HRTEM) as shown in Fig. 4c and S8† was further employed to investigate this structure. Numerous grain boundaries were revealed in GBP-Pt-600 and every three or four boundaries could bring pores and triple junctions. To study the effect of grain boundaries on the surface area of the GBP-Pt-600



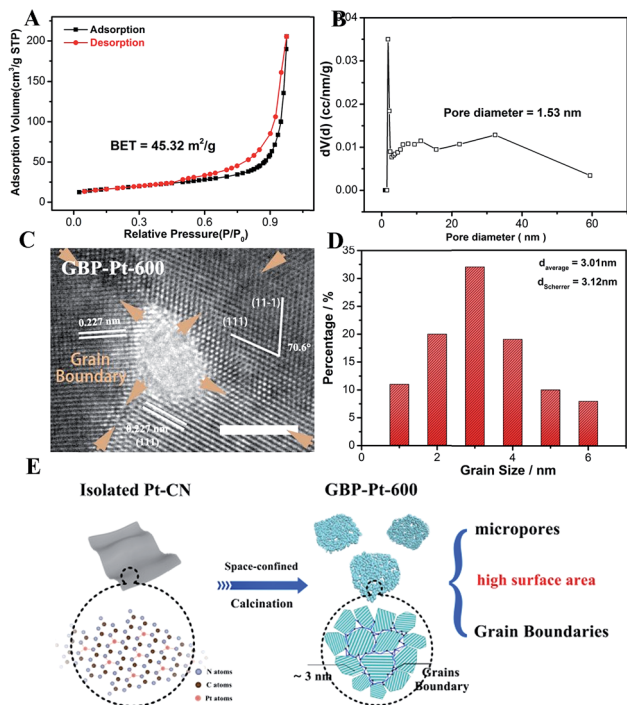


Fig. 4 (a) The Brunauer–Emmett–Teller analysis of the GBP-Pt-600 sample. (b) Pore size distribution of GBP-Pt-600. (c) High-resolution transmission electron microscopy image of the GBP-Pt-600 sample. The scale bar is 2 nm. (d) Grain size distribution histogram for GBP-Pt-600. (e) Schematic illustration of the synthesis process for grain-boundary porous Pt.

sample, the volume fraction of grain boundaries was calculated using the formula $f = (3 \times \Delta)/(d + \Delta)$, where Δ means the thickness of grain boundaries and d represents the diameter. The diameter of the Pt crystal was calculated to be 3.12 nm using the Debye–Scherrer formula³⁸ (Fig. S9†), which corresponds to the grain size distribution histogram for the GBP-Pt-600 sample in Fig. 4d. As the value of volume fraction f is calculated to be 42%, it could be identified that grain boundaries represent an important component on the surface of the GBP-Pt-600 sample. This grain-boundary-rich porous platinum was synthesized *via* a special topo-chemical template strategy using a unique 2D space-confined reaction (Fig. 4e and S10†). Isolated Pt atoms in the nitrogen pot of the carbon framework (denoted as Pt-CN) were used as precursors and calcination of the Pt-CN precursor was further aimed to reorganize Pt atoms to form this porous structure. Based on the above results, the porous structure with high surface area in GBP-Pt-600 could also contribute to the high electrochemical performance.

Conclusions

In conclusion, we report that optimal coordination-site exposure in grain-boundary porous platinum brings excellent activity and durability for the oxygen reduction reaction in fuel cells. The GBP-Pt-600 electrocatalyst exhibits 7 times higher ORR activity than commercial Pt/C. For the fuel cell test, a high activity (1.49 W cm^{-2} , $0.71 \text{ A mg}^{-1} \text{ Pt}$ for mass activity) and

stability (12.9% loss after 30 K cycles) could also be observed, all of which far surpass the U.S. DOE target in 2020 ($0.44 \text{ A mg}^{-1} \text{ Pt}$ for mass activity and 40% loss for stability). Density Functional Theory (DFT) calculation suggests that proper Pt coordination site exposure in grain boundaries provides optimal adsorption energies for oxygen species, which could result in high intrinsic activity in the ORR, even superior to Pt(111) sites. X-ray Absorption Fine Structure (XAFS) analysis and high-angle annular dark-field scanning transmission electron microscopy (HAADF-STEM) were further used to verify this change of coordination numbers and investigate the origin of high stability. We anticipated that coordination-site exposure engineering opens a new avenue toward novel robust electrocatalysts for the fuel-cell oxygen reduction reaction.

Experimental

Synthesis of isolated Pt in the nitrogen pot of the carbon framework (denoted as Pt-CN)

Typically, 2 g urea and 1 g of dicyanodiamide were dissolved in 20 mL water. Then 50 mg $\text{H}_2\text{PtCl}_6 \cdot 6\text{H}_2\text{O}$ was added into another 10 mL solution containing 5.8 g urea. Then these two solutions were mixed. The mixed solution was freeze-dried in a bulk tray dryer and the obtained white powder was heated in a porcelain boat at 530°C for 4 h in an Ar flow at a speed of 0.5 mL s^{-1} . The resulting sample was denoted as Pt-CN.

Synthesis of grain-boundary porous Pt (denoted as GBP-Pt)

The direct calcination of Pt-CN in air at high temperature was selected to be an effective way to remove the CN template. In a typical experiment, 50 mg Pt-CN nanosheet precursor was placed in a tube and heated to 400°C , 500°C , 600°C , 700°C and 800°C , respectively, with a heating rate of 5°C min^{-1} . After heating for 1 h, the sample cooled down to room temperature naturally. The resulting powder was collected for further characterization and denoted as GBP-Pt.

Structure characterization

The as-prepared products were examined using an X-ray powder diffraction (Philips X'Pert Pro Super diffractometer) instrument with Cu $K\alpha$ radiation ($\lambda = 1.54178 \text{ \AA}$). The size and morphology of the samples were analyzed by using a transmission electron microscope (JEM-2100F field-emission electron microscope) which was operated at an acceleration voltage of 200 kV. X-ray photoelectron spectra (XPS) were obtained on an ESCALAB MK II X-ray photoelectron spectrometer with Mg $K\alpha$ as the excitation source. The high-angle annular dark-field scanning transmission electron microscopy (HAADF-STEM) image and EDS mapping images were taken on a JEOL JEM-ARF200F atomic resolution analytical microscope. The loading of Pt was measured on an inductively coupled plasma-atomic emission spectrometer (ICP-AES) on an Optima 7300 DV (PerkinElmer Corporation). The X-ray absorption fine structure (XAFS) measurements at the Pt L-edge were performed at the BL14W1 beamline of the Shanghai Synchrotron Radiation Facility (SSRF), China. The storage ring of the SSRF was operated at 3.5 GeV with a maximum current of 210 mA. The



nitrogen adsorption–desorption isotherms and corresponding pore size distribution were evaluated using the Brunauer–Emmett–Teller (BET) equation in the Micromeritics ASAP 2000 system.

Electrochemical measurements

Vulcan carbon XC-72 was used as the support for these catalysts. Typically, 5 mg of catalysts with 20 mg XC-72 were dispersed in hexane under stirring and evaporation at 50 °C with a Pt loading content of 20%. The carbon supported catalysts were further used in electrochemical measurements. 1.5 mg of catalysts/XC-72 were first suspended in 0.6 mL of 2 : 1 water/isopropanol solution with 5% Nafion in a small bottle and the catalyst ink was prepared by ultrasonic treatment for 40 min. 8 μL of the catalyst ink was loaded onto a polished glassy carbon electrode with 5 mm diameter. The Pt loadings of GBP-Pt and commercial Pt were determined by ICP-AES to be 19.6, and 20 $\mu\text{g}_{\text{Pt}}/\text{cm}^2$, respectively. The catalyst coated electrode was mounted onto a Pine ASR rotator and used as the working electrode in O_2 saturated 0.1 M HClO_4 at room temperature ($\text{pH} = 1$). The electrochemical measurements were performed in a conventional three-electrode system in the CHI760D electrochemical station. Ag/AgCl and the graphite rod were used as the reference and the counter electrodes. The Luggin capillary was used to decrease the ohmic resistance of the solution. Cathodic polarization curves were recorded at a sweep rate of 10 mV s^{-1} and the rotating speed is 1600 rpm. Solution ohmic drop (iR-drop) was compensated and capacitive background current was corrected by subtracting the curve recorded in Ar-saturated solution. The potentials in our work were calibrated to the reversible hydrogen electrode (RHE) through RHE calibration, according to the Nernst equation: $E_{\text{RHE}} = E_{\text{Ag/AgCl}} + 0.059 \times \text{pH} + 0.1976$. The rotating ring-disk electrode (RRDE) measurements were also performed with the same catalyst loading. A glassy carbon (GC, $f = 5.61$ mm) disk-Pt ring RRDE was used. To determine the H_2O_2 yield, the ring electrode was held at 1.30 V to oxidize H_2O_2 diffused from the disk electrode. For the ORR at a RDE, the relative mass or specific activity could be calculated with the Koutecky–Levich equation $1/j = 1/j_{\text{K}} + 1/j_{\text{L}}$, where j is the measured current density; j_{K} and j_{L} are the kinetic and diffusion-limiting current densities, respectively. The accelerated durability test (ADT) was performed in the same potential window and electrolyte with a sweep rate of 50 mV s^{-1} for 10 K or 30 K cycles. Then the sweep rate was changed back to 10 mV s^{-1} and the curves were recorded.

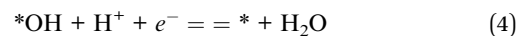
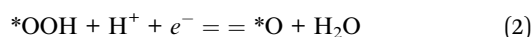
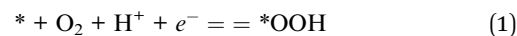
Fuel cell measurements

The membrane electrode assembly (MEA) was prepared through a hot-pressing method. The catalyst “ink” was prepared by ultrasonic dispersion of catalysts/XC-72 (1.4 mg) and 5 wt% Nafion solutions into 1.0 mL deionized water for 1 hour. The ink was directly coated on PTFE-pretreated Toray 060 carbon paper ($1.2 \times 1.2 \text{ cm}^2$) as the cathode, and no microporous layer was used. The loading of Pt content for all catalysts was 0.2 mg cm^{-2} Pt. The anode catalyst is 60 wt% Pt/C with a loading of 0.2 mg cm^{-2} Pt. Then, the MEA was prepared by hot-pressing the cathode, anode, NRE 211 Nafion membrane, and gasket at

about 3 MPa for 180 s. The compression was 15–20%. The active area of the MEA was $1.2 \times 1.2 \text{ cm}^2$. Fuel cell performance was tested at 354 K on a Model 850e fuel cell test system (Scribner Associates Inc.). H_2 and O_2 flow rates were 0.4 L min^{-1} at 100% RH for polarization curve measurement, and a back pressure of 1 or 2 bar was applied.

DFT calculations

All first-principles calculations were performed with the density functional theory (DFT) method implemented in the Vienna *Ab initio* Simulation Package (VASP) package. Each grain was simulated by Pt_{201} in cubic boxes, while the grain boundaries were generated by attachments of two Pt grains. The two topmost layers of Pt and the adsorbates are allowed to relax. The projector augmented wave (PAW) pseudopotential and the Perdew–Burke–Ernzerhof (PBE) exchange–correlation functional were used in the calculations with a 450 eV plane-wave cut-off energy. All calculations were spin-polarized and the lattice parameters were optimized until the convergence tolerance of force on each atom was smaller than 0.05 eV. All periodic slab models have a vacuum spacing of at least 15 Å. The “generalized” coordination number $\overline{\text{CN}}$ was calculated to eliminate “finite-size effects” by introducing a weight to each first-nearest neighbor atom j ,³³ corresponding to its own coordination number $[\text{cn}(j)]$. The formula to estimate $\overline{\text{CN}}$ for a site is $\overline{\text{CN}}(i) = \sum_{j=1}^{n_i} \text{cn}(j) / \text{cn}$. In this work, the adsorption energies were calculated *via* the following equation to model the ORR.^{20,32,33}



It is well known that two RDS (potential-determining steps) are eqn (1) and (4), where the key reaction intermediates are free radicals $* \text{OOH}$ and $* \text{OH}$. The ΔG_{O_2} is calculated to be 4.92 eV at 298 K using the computational hydrogen electrode (CHE).

$$G_{\text{OH}} + G_* + G_{\text{H}_2\text{O}} = G_{* \text{OH}} + \frac{1}{2} G_{\text{H}_2} \quad (5)$$

$$G_{\text{OOH}} + G_* + G_{\text{H}_2\text{O}} = G_{* \text{OOH}} + \frac{1}{2} G_{\text{H}_2} \quad (6)$$

where $G_{* \text{OH}}$ and $G_{* \text{OOH}}$ are calculated using eqn (7), where TS is gas-phase entropy correction, ZPE is the zero-point-energy correction, $E_{\text{solvation}}$ is the solvation energy granted and E_{DFT} is the total electronic energy.

$$G_* = \text{ZPE} + E_{\text{DFT}} + E_{\text{solvation}} - \text{TS} \quad (7)$$

Then the energies for reactions (1) and (4) could be calculated using eqn (8) and (9),



$$G_1 = G_{\text{OOH}} - G_{\text{O}_2} \quad (8)$$

$$G_4 = -G_{\text{OH}} \quad (9)$$

Conflicts of interest

There are no conflicts to declare.

Acknowledgements

The authors thank Dr Jie Tian at Engineering and Materials Science Experiment Centre for the help of HRTEM experiments. This work was financially supported by the National Basic Research Program of China (2015CB932302), Natural Science Foundation of China (No. 21890751, 91745113, 11621063, and 21601172), National Program for Support of Topnotch Young Professionals, and Fundamental Research Funds for the Central Universities (No. WK 2060190084). The authors also appreciate the support from the Major/Innovative Program of Development Foundation of Hefei Center for Physical Science and Technology.

Notes and references

- S. Chu and A. Majumdar, *Nature*, 2012, **488**, 294.
- R. F. Service, *Science*, 2009, **324**, 1257–1259.
- H. T. Chung, D. A. Cullen, D. Higgins, B. T. Sneed, E. F. Holby, K. L. More and P. Zelenay, *Science*, 2017, **357**, 479–484.
- S. Krishnan and F. A. Armstrong, *Chem. Sci.*, 2012, **3**, 1015–1023.
- M. K. Debe, *Nature*, 2012, **486**, 43.
- A. Kulkarni, S. Siahrostami, A. Patel and J. K. Nørskov, *Chem. Rev.*, 2018, **118**, 2302–2312.
- Q. Wang, Z.-Y. Zhou, Y.-J. Lai, Y. You, J.-G. Liu, X.-L. Wu, E. Terefe, C. Chen, L. Song and M. Rauf, *J. Am. Chem. Soc.*, 2014, **136**, 10882–10885.
- K. Shimizu, L. Sepunaru and R. G. Compton, *Chem. Sci.*, 2016, **7**, 3364–3369.
- Y.-C. Wang, Y.-J. Lai, L. Song, Z.-Y. Zhou, J.-G. Liu, Q. Wang, X.-D. Yang, C. Chen, W. Shi, Y.-P. Zheng, M. Rauf and S.-G. Sun, *Angew. Chem., Int. Ed.*, 2015, **127**, 10045–10048.
- X. Huang, Y. Wang, W. Li and Y. Hou, *Sci. China: Chem.*, 2017, **60**, 1494–1507.
- R. Wang, J. Liu, P. Liu, X. Bi, X. Yan, W. Wang, X. Ge, M. Chen and Y. Ding, *Chem. Sci.*, 2014, **5**, 403–409.
- L. Guo, W.-J. Jiang, Y. Zhang, J.-S. Hu, Z.-D. Wei and L.-J. Wan, *ACS Catal.*, 2015, **5**, 2903–2909.
- C. Meng, T. Ling, T. Y. Ma, H. Wang, Z. Hu, Y. Zhou, J. Mao, X. W. Du, M. Jaroniec and S. Z. Qiao, *Adv. Mater.*, 2017, **29**, 1604607.
- L. Bu, N. Zhang, S. Guo, X. Zhang, J. Li, J. Yao, T. Wu, G. Lu, J.-Y. Ma, D. Su and X. Huang, *Science*, 2016, **354**, 1410–1414.
- M. del Carmen Gimenez-Lopez, A. Kurtoglu, D. A. Walsh and A. N. Khlobystov, *Adv. Mater.*, 2016, **28**, 9103–9108.
- F. Saleem, Z. Zhang, B. Xu, X. Xu, P. He and X. Wang, *J. Am. Chem. Soc.*, 2013, **135**, 18304–18307.
- X. Huang, Z. Zhao, L. Cao, Y. Chen, E. Zhu, Z. Lin, M. Li, A. Yan, A. Zettl, Y. M. Wang, X. Duan, T. Mueller and Y. Huang, *Science*, 2015, **348**, 1230–1234.
- M. Li, Z. Zhao, T. Cheng, A. Fortunelli, C.-Y. Chen, R. Yu, Q. Zhang, L. Gu, B. V. Merinov, Z. Lin, E. Zhu, T. Yu, Q. Jia, J. Guo, L. Zhang, W. A. Goddard, Y. Huang and X. Duan, *Science*, 2016, **354**, 1414–1419.
- D. Banham and S. Ye, *ACS Energy Lett.*, 2017, **2**, 629–638.
- J. Greeley, I. Stephens, A. Bondarenko, T. P. Johansson, H. A. Hansen, T. Jaramillo, J. Rossmeisl, I. Chorkendorff and J. K. Nørskov, *Nat. Chem.*, 2009, **1**, 552.
- F. Calle-Vallejo, M. T. Koper and A. S. Bandarenka, *Chem. Soc. Rev.*, 2013, **42**, 5210–5230.
- D. Li, C. Wang, D. S. Strmcnik, D. V. Tripkovic, X. Sun, Y. Kang, M. Chi, J. D. Snyder, D. van der Vliet and Y. Tsai, *Energy Environ. Sci.*, 2014, **7**, 4061–4069.
- D. Y. Chung, J. M. Yoo and Y.-E. Sung, *Adv. Mater.*, 2018, **30**, 1704123.
- Y. Bing, H. Liu, L. Zhang, D. Ghosh and J. Zhang, *Chem. Soc. Rev.*, 2010, **39**, 2184–2202.
- P. P. Lopes, D. Strmcnik, D. Tripkovic, J. G. Connell, V. Stamenkovic and N. M. Markovic, *ACS Catal.*, 2016, **6**, 2536–2544.
- K. J. J. Mayrhofer, B. B. Blizanac, M. Arenz, V. R. Stamenkovic, P. N. Ross and N. M. Markovic, *J. Phys. Chem. B*, 2005, **109**, 14433–14440.
- M. Nesselberger, S. Ashton, J. C. Meier, I. Katsounaros, K. J. J. Mayrhofer and M. Arenz, *J. Am. Chem. Soc.*, 2011, **133**, 17428–17433.
- D. Y. Chung, H. Shin, J. M. Yoo, K.-S. Lee, N.-S. Lee, K. Kang and Y.-E. Sung, *J. Power Sources*, 2016, **334**, 52–57.
- I. E. Stephens, A. S. Bondarenko, U. Grønbyerg, J. Rossmeisl and I. Chorkendorff, *Energy Environ. Sci.*, 2012, **5**, 6744–6762.
- L. Chong, J. Wen, J. Kubal, F. G. Sen, J. Zou, J. Greeley, M. Chan, H. Barkholtz, W. Ding and D.-J. Liu, *Science*, 2018, **362**, 1276–1281.
- Z. Liu, C. Yu, I. A. Rusakova, D. Huang and P. Strasser, *Top. Catal.*, 2008, **49**, 241–250.
- K. Sasaki, H. Naohara, Y. Cai, Y. M. Choi, P. Liu, M. B. Vukmirovic, J. X. Wang and R. R. Adzic, *Angew. Chem., Int. Ed.*, 2010, **49**, 8602–8607.
- F. Calle-Vallejo, J. I. Martínez, J. M. García-Lastra, P. Sautet and D. Loffreda, *Angew. Chem., Int. Ed.*, 2014, **53**, 8316–8319.
- N. Ishiguro, S. Kityakarn, O. Sekizawa, T. Uruga, T. Sasabe, K. Nagasawa, T. Yokoyama and M. Tada, *J. Phys. Chem. C*, 2014, **118**, 15874–15883.
- N. Ishiguro, T. Saida, T. Uruga, O. Sekizawa, K. Nagasawa, K. Nitta, T. Yamamoto, S.-i. Ohkoshi, T. Yokoyama and M. Tada, *Phys. Chem. Chem. Phys.*, 2013, **15**, 18827–18834.
- O. Sekizawa, T. Uruga, K. Higashi, T. Kaneko, Y. Yoshida, T. Sakata and Y. Iwasawa, *ACS Sustainable Chem. Eng.*, 2017, **5**, 3631–3636.
- H. Imai, K. Izumi, M. Matsumoto, Y. Kubo, K. Kato and Y. Imai, *J. Am. Chem. Soc.*, 2009, **131**, 6293–6300.
- U. Holzwarth and N. Gibson, *Nat. Nanotechnol.*, 2011, **6**, 534.

