

Immediate versus conventional postoperative tracheal extubation for enhanced recovery after liver transplantation

IPTE versus CTE for enhanced recovery after liver transplantation

Jianbo Li, MD^a, Chengdi Wang, MD^b, Yuting Jiang, BS^c, Jiulin Song, PhD^a, Longhao Zhang, MS^d, Nan Chen, MD^c, Rui Zhang, MS^b, Lan Yang, MS^b, Qin Yao, MS^e, Li Jiang, MD^a, Jian Yang, MD^a, Tao Zhu, MD^f, Yang Yang, BS^f, Weimin Li, MD^{b,*}, Lunan Yan, MD^{a,*}, Jiayin Yang, MD^{a,*}

Abstract

Introduction: To systematically compare immediate postoperative tracheal extubation (IPTE) with conventional tracheal extubation (CTE) and to determine whether IPTE can achieve an enhanced recovery for adult patients underwent liver transplantation (LT) without additional risks. We designed a systematic review and meta-analysis.

Methods: The RCTs, cohorts, case–controls, or case series that explored outcomes of IPTE after LT for adults were involved in our study. The Newcastle–Ottawa scale was used to assess the risk of bias.

Results: A total of 15 studies (n=4144) were included, consisting of 10 studies (retrospective cohorts; n=3387) for quantitative synthesis and 5 studies (1 prospective cohort, and 4 case series; n=757) for qualitative synthesis. The pooled estimates suggested IPTE could reduce time to discharge from ICU stay (TDICU) (mean difference [MD] –2.12 days, 95% confidence interval [CI] –3.04 to –1.19 days), time to discharge from the hospital (TDH) (MD –6.43 days, 95% CI –9.53 to –3.33 days), re-intubation rate (RI) (odds ratio [OR] 0.29, 95% CI 0.22–0.39), morbidity rate (MR) (OR 0.15, 95% CI 0.08–0.30) and graft dysfunction rate (GD) (IPTE vs CTE: 0.3% vs 3.8%, $P < .01$), and had comparable ICU survival rate (ICUS) (OR 6.67 95% CI 1.34–33.35) when compared with CTE after LT.

Conclusions: IPTE can achieve an enhanced recovery for adult patients underwent LT without additional re-intubation, morbidity, and mortality risks. However, further work needs to be done to establish the extent definitively through carefully designed and conducted RCTs.

Abbreviations: BMI = body mass index, CI = confidence intervals, CTE = conventional tracheal extubation, GD = graft dysfunction rate, GD = graft dysfunction rate, HCC = hepatic cellular cancer, ICU = postponed intensive care unit, ICUS = ICU survival rate, IPTE = immediate postoperative tracheal extubation, LT = liver transplantation, MD = mean difference, MELD = model for end-stage liver disease, MOOSE = Meta-analysis of Observational Studies in Epidemiology, MR = morbidity rate, NOS = Newcastle–Ottawa scale, OR = odds ratio, PRISMA = Preferred Reporting Items for Systematic Reviews and Meta-analyses, RI = re-intubation rate, TDH = time to discharge from the hospital, TDICU = time to discharge from ICU stay.

Keywords: conventional tracheal extubation, enhanced recovery after surgery, immediate postoperative tracheal extubation, liver transplantation

Editor: Kelvin Ng.

JL, CW and YJ contributed equally to this work.

Funding Supported by a grant from the National Science and Technology Major Project of China (Grant number 81470037 to Prof. JY).

The authors have no conflicts of interest to disclose.

^a Department of Liver Surgery and State Key Laboratory of Biotherapy, West China Hospital, ^b Department of Respiratory and Critical Care Medicine, West China Medical School/West China Hospital, ^c West China School of Medicine, ^d Department of Cardiology, ^e Department of Anesthesiology, West China Hospital, ^f West China Hospital of Stomatology, Sichuan University, Chengdu, China.

* Correspondence: Weimin Li, Department of Respiratory and Critical Care Medicine, Lunan Yan, Jiayin Yang, Department of Liver Surgery, West China Hospital, Sichuan University, Chengdu, 610041, P.R. China (e-mails: weimi003@yahoo.com, yanlunan8060@163.com, doctoryjy@163.com).

Copyright © 2018 the Author(s). Published by Wolters Kluwer Health, Inc. This is an open access article distributed under the terms of the Creative Commons Attribution-Non Commercial-No Derivatives License 4.0 (CCBY-NC-ND), where it is permissible to download and share the work provided it is properly cited. The work cannot be changed in any way or used commercially without permission from the journal.

Medicine (2018) 97:45(e13082)

Received: 22 May 2018 / Accepted: 10 October 2018

<http://dx.doi.org/10.1097/MD.0000000000013082>

Strengths and limitations of this study

- This is, to our knowledge, the first systematic review and meta-analysis on immediate postoperative tracheal extubation (IPTE) for enhanced recovery after liver transplantation (LT), with the aim of promoting the clinical application of this practice.
- The sources of heterogeneity were explored with two prior subgroup hypotheses: the anesthesia types (fast-track anesthesia and traditional anesthesia) and, and the time-intervalbased IPTE types (< 1-hour, < 4-hours and < 8-hours).
- The qualitative analyses were conducted on the issues including indications, anesthesia, extubation criteria, complications, re-intubation causes and overall survival rates.
- The potential limitations include all non-RCTs involved, the asymmetry of data sources due to a regional imbalance of technology development and the failure to quantitatively analyze readmission rate and costs due to the limited and different-baseline data.

1. Introduction

Liver transplantation (LT) is the most effective approach to treat decompensated liver cirrhosis so far.^[1] Because of the particularity of this major surgery and the complexity of patients' diseases, delayed postoperative tracheal extubation always exists. However, some studies have found this conventional tracheal extubation (CTE) may go against the postoperative rehabilitation of patients.^[2–6] For example, prolonged mechanical ventilation increases the risk of pulmonary infection and intensifies the reduction of liver blood flow markedly in the context of high cardiac indices during LT and of compromised immune after LT, eventually leading to lung or liver failures,^[7–9] increased risks of death, postponed intensive care unit (ICU) stay and addition of medical expenses.^[10,11] To solve these problems, LT doctors pay attention to immediate postoperative tracheal extubation (IPTE), which was first introduced into LT as part of resource-utilization-emphasizing fast-tracking (nowadays, called enhanced recovery after surgery, ERAS^[12]) 30 years ago.^[13] In the last 10 years, a series of studies have demonstrated IPTE's feasibility and safety: 60% to 80% of LT patients could undergo IPTE in the operating room without an increased risk of subsequent reintubation.^[5,14,15] Nevertheless, IPTE is still thought to be a traditional-contrary practice against the view of 48 hours-ventilation after major surgery; only a few large LT centers take a positive attitude to this challenging risky practice. Hence, our aims were to systematically compare IPTE with CTE and to determine whether IPTE can achieve an enhanced recovery for adult patients underwent LT without additional risks.

2. Methods

We have stated as required in the first paragraph of the methods section that this was a secondary study based on previously published results, thus no ethical approval and patient consent are required.

We followed the Preferred Reporting Items for Systematic Reviews and Meta-analyses (PRISMA) recommendations,^[16] and the Meta-analysis of Observational Studies in Epidemiology (MOOSE) guidelines.^[17]

2.1. Definition

In this study, IPTE refers to < 8 hours between extubation and end of surgery; successfully tracheal extubation refers to no need of reintubation within the first 48 hours after extubation.

2.2. Eligibility criteria

We considered all studies published in any language, designed with RCT, cohort, case-control, or case series, and comparing IPTE with CTE after LT for adults. Moreover, the following criteria were also required: including more than 5 patients; original complete publications with full-text accessible; no overlapping data between studies.

2.3. Literature search

We searched PubMed, Ovid Embase, Cochrane Central Register of Controlled Trials, and Web of Science from database inception up to June 2017 (and continuously updated to September 2017), any language, using MeSH as far as possible. We also identified potentially relevant studies by scanning reference lists of review articles and consultation with experts in the field. An information

expert (DP) developed and conducted the search strategy (Appendix 1A).

2.4. Study process

Two reviewers independently participated in the initial screening records based on the above-mentioned eligibility criteria, reviewing full-text articles, quality assessment, and collecting data from each eligible study using detailed instructions. The cross-check was performed to identify discrepancies. Any conflicts arising between the 2 reviewers were adjudicated by a third reviewer (JYY).

2.5. Risk of bias assessment

We used the Newcastle–Ottawa scale (NOS)^[18] to assess the methodological quality of the studies included in this review. Two investigators independently assessed quality, and another resolved the discrepancies.

2.6. Data collection

We collected a total of 158 pieces (details seen in Appendix 1B) of information in 4 aspects: general characteristics (16 items), preoperative variables (53 items), intraoperative variables (57 items), and postoperative variables (32 items).

2.7. Data analysis

For quantitative synthesis, we assessed heterogeneity between studies using the χ^2 test and I^2 statistic. We pooled mean difference (MD) for continuous data using Inverse Variance methods and odds ratios (OR) for dichotomous data using Mantel–Haenszel methods, reporting pooled results along with their associated 95% confidence intervals (CI). The sources of heterogeneity were explored through 2 prior subgroup hypotheses: the anesthesia types (fast-track anesthesia and traditional anesthesia) and the time-interval-based IPTE types (< 1-hour, < 4-hours and < 8-hours). We undertook sensitivity analyses by using alternative effect measures (odds ratio ν relative risk; mean difference ν standardized mean difference). A P value of < .01 was considered significant.

3. Results

3.1. Search results

Our search yielded 683 potentially relevant reports. After screening titles and abstracts, we retrieved 138 reports for full-text screening and then excluded 123 ones for no useable data ($n=68$), improper study design ($n=45$), overlapping data ($n=1$)^[19] and conference abstracts ($n=9$). Finally, a total of 15 studies, including 10 retrospective ones,^[9,20–28] 1 prospective one^[29] and 4 case series^[2,30–32] were eligible for inclusion (Fig. 1). A total number of 4144 patients were recruited, including 3387 patients from 10 studies^[9,20–28] for quantitative synthesis and 757 patients from 5 studies^[2,29–32] for qualitative synthesis (Fig. 1).

3.2. Characteristics of studies

Of the 15 included studies, 13 (86%) were unicentric, 1 (7%) was bicentric and 1 (7%) was multicentric (7 involved centers); because 3 centers^[9,21,31] were duplicated, there are actually only

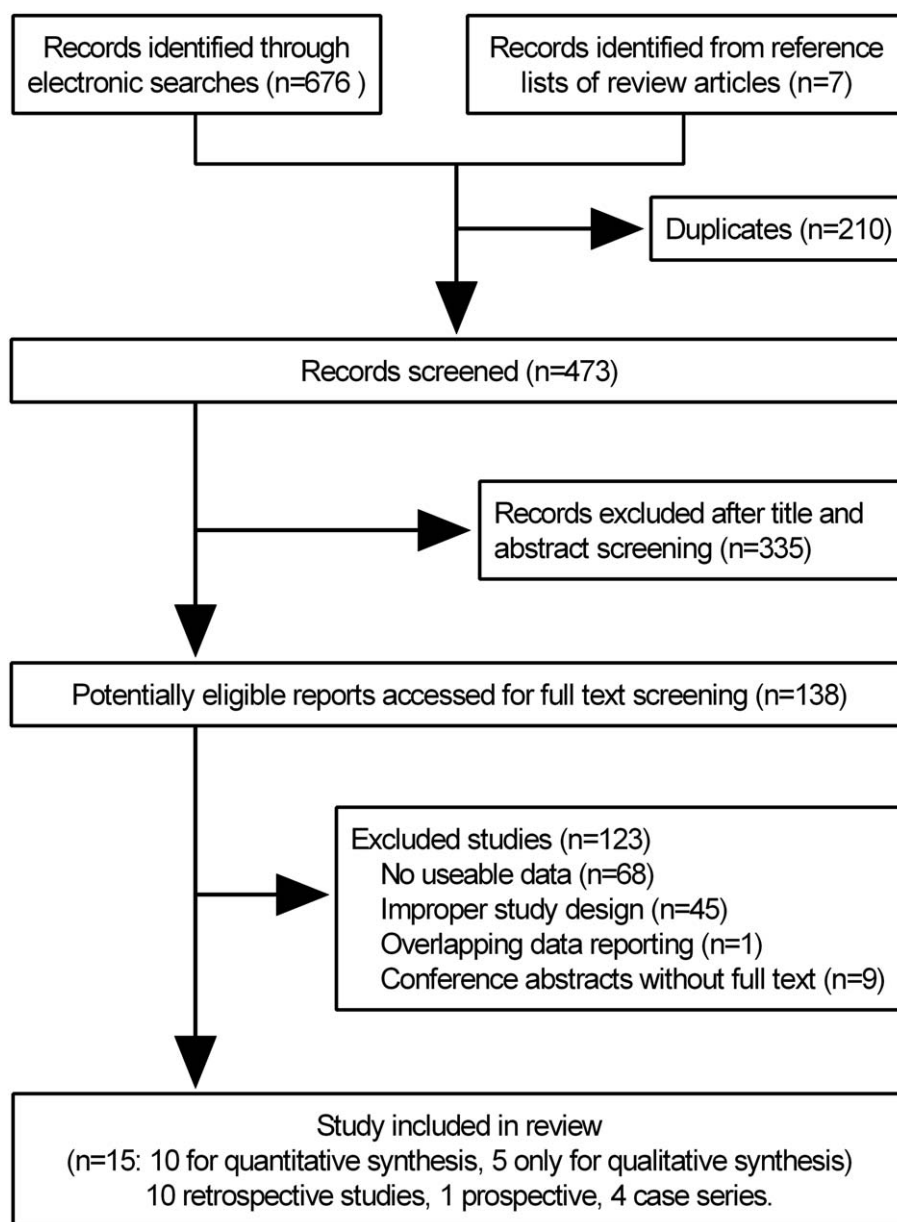


Figure 1. Flow chart of article selection.

19 involved centers. Of these 19 involved LT centers, 7 (37%) were in North America, 6 (32%) were in Europe, 4 (21%) were in Asia and 2 (10%) were in South America. The enrolled sample sizes ranged from 27 to 870, with a mean age range of 26 to 57 years, mean weight range of 49.0 to 78.2 kg, mean body mass index (BMI) range of 24.0 to 31.6 kg/m², mean postoperative ventilation time range of 0–111.1 hours, mean IPTE rate range of 5.5% to 84.4% and follow-up range of 3 to 66 months (Table 1).

3.3. Baseline features comparison for IPTE and CTE after LT

No significant differences were found between IPTE and CTE regarding recipient age (MD −1.66 years, 95% CI −3.45 to 0.13 years) (Fig. 2A), Child C status % (OR 0.75, 95% CI 0.39–1.45)

(Fig. 2B), recipient BMI (MD −1.30 kg/m², 95% CI −2.41 to −0.18 kg/m²) (Fig. 2C), model for end-stage liver disease (MELD) scores (MD −2.46, 95% CI −4.45 to −0.47) (Fig. 2D), preoperative creatinine (MD −14.58 μmol/L, 95% CI −30.9 to −1.73 μmol/L) (Fig. 2E) and cold ischemic time of graft (MD 4.18 minutes, 95% CI −17.43 to −25.78 minutes) (Fig. 2F). Still, there were significant differences between the 2 approaches regarding the amount of packed red cell (PCR) transfused (MD −4.30 U, 95% CI −6.24 to −2.37 U) (Fig. 2G) and the duration of surgery (MD −32.02 minutes, 95% CI −47.73 to −16.31 minutes) (Fig. 2H). The subgroup analysis indicated a correlation between anesthesia types and IPTE. The fast-track anesthesia favored IPTE through less amount of PCR transfused and less duration of surgery (Fig. 2G and H). Likewise, the subgroup analysis by time-interval-based IPTE types revealed an inclination

Table 1
Characteristics of studies included for meta-analysis and systematic review.

Ref. Year	Country/Center description	Group	Size (n)	Study design	Patient	Male (%)	Mean age, years	Mean weight, kg	Mean BMI, kg/m ²	Mean time of PET, hours	Mean IPTe rate (%)	Follow-up, months
*Neelekanta, 1997 ^[20] 1994–1995	America one center	OR Ex ICU Ex	18 17	Re	Adults	50 47.1	43.9 52.4	78.2 73	NA NA	NA 15.6	51.4 18.7	NA 12–66
Glanemann, 2001 ^[22] 1992–1996	Germany one center	Immediate <24 h > 24 h	102 383 61	Re	Adults	63.7 30 62.3	48 48* 46*	NA NA NA	NA NA NA	0 5* 49.5*	18.7	12–66
Biancofiore, 2001 ^[21] 1997–1999	Italy one center	<3 h > 8 h 8–24 h >24 h	115 19 10 36	Re	Adults	75.7 47.4 80.0 55.6	52.5 55* 50.5* 46*	NA NA NA NA	NA NA NA NA	≤3 3–8 8–24 >24	63.9	3–6
*Mandell, 2002 ^[23] 1996–1998	America one center	No attempt Attempt Success Failure	23 124 111 13	Re	Adults	12.6 87.3 88.2 7.9	48.4 47 47.8 47.1	NA 28.6 25.7 31.6	NA 25 25 31.6	NA NA NA NA	84.4	NA
*Biancofiore, 2005 ^[9] 1999–2004	Italy one center	Immediate <24 h >24 h	211 113 41	Re	Adults	84.1 69.1 59.5	51.1 53.5 48.9	NA NA NA	NA NA NA	NA <24 >24	57.8	NA
*Glanemann, 2007 ^[23] 1997–2005	Germany one center	OR Ex ICU Ex	643 194	Re	Adults	NA NA	NA NA	NA NA	NA NA	111.1	76.8	12–60
*Zeyneloglu, 2007 ^[24] 2004–2006	Turkey one center	OR Ex ICU Ex	52 48	Re	Adults	73.1 72.9	26.9 26.3	49 50.5	NA NA	NA NA	52.0	NA
*Khosravi, 2010 ^[25] 2003–2006	Iran one center	Early Ex Late Ex	121 79	Re	Adults	NA NA	36.1 39.7	67.2 68.7	NA NA	<4 >4	60.5	NA
*Taner, 2012 ^[26] 2003–2007	America one center	Fast-Track ICU	513 357	Re	Adults	69.6 66.4	53.9 57.1	NA NA	28.4 29	NA NA	59.0	12–60
*Lee, 2014 ^[27] 2011–2012	Korea one center	Early Ex Non-EX	66 41	Re	Adults	80.3 68.3	52.5 54.6	NA NA	24 25.5	<1 NA	61.7	NA
*Mandell, 1997 ^[23] 1994–1995	America 2 centers	UC	Ex	12 in 1994 16 in 1995	Re & Pr	Adults	NA	<50	NA	NA	0	25.2
		UCSF	Ex	25 in 1995	Pr						0	23.6
		Late Ex	Vt	81 in 1995							NA	
		NG	40			90	48.4	57.9	NA	<3	67.5	NA
[†] Ferraz-Neto, 1999 ^[30] 1995–1998	Brazil one center	NG	27	Cas	Adults	NA	NA	NA	NA	NA	66.7	NA
[†] Ulukaya, 2002 ^[32] 1995–2002	Turkey one center	NG	40	Cas	Adults	NA	44	NA	NA	NA	57.3	12–60
[†] Quiroga, 2004 ^[2] 1993–2002	Chile one center	NG	82	Cas	Adults	NA	NA	NA	NA	NA	32.8	NA
[†] Mandell, 2007 ^[31] NA	America 7 centers	Site 1 Site 2 Site 3 Site 4 Site 5 Site 6 Site 7	76 7 71 67 18 113 39	Cas	Adults	79 57 83 61 89 74 69	52.7 46.7 50.4 47.9 50.5 47.9 52.4	NA NA NA NA NA NA NA	27.4 30.4 25 25 27.1 26.3 28.7	NA NA NA NA NA NA NA	5.5 63.4 34.9 7.1 66.9 21.2	NA

BMI = body mass index, Cas = case series, Ex = extubation, ICU = intensive care unit, IPTe = intensive postoperative tracheal extubation, NA = not available, NG = none grouping, OR = operating room, PET = postoperative tracheal extubation, Pr = prospective, Re = retrospective, UC = University of Colorado Health Sciences Center, UCSF = University of California at San Francisco, Vt = ventilated.
[†] Only for qualitative synthesis.
* For quantitative synthesis.
[‡] The value is a median.

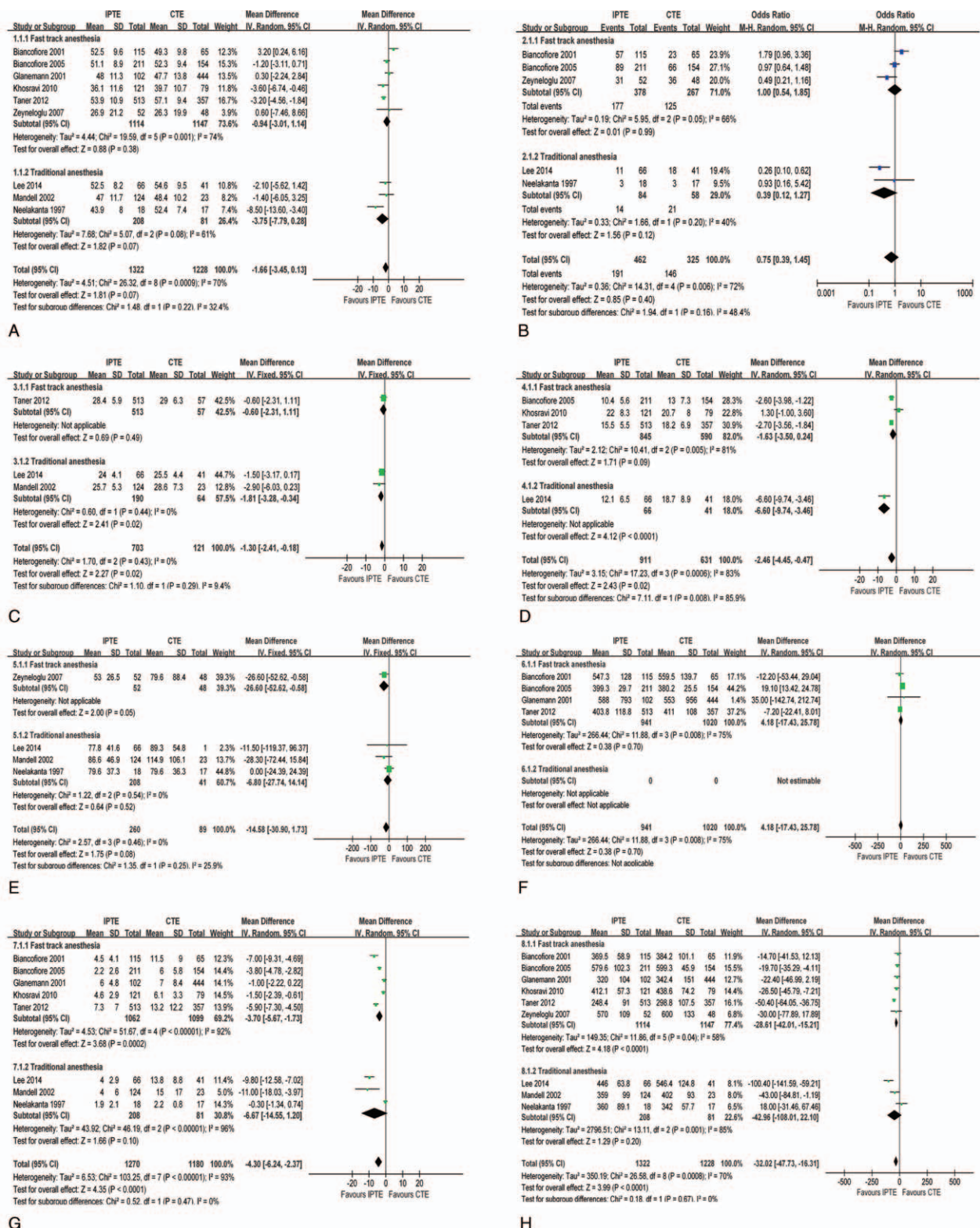


Figure 2. Baseline features comparison for IPTE and CTE after LT. (A). Recipient age; (B). Recipient BMI; (C). Child C status %; (D

3.4. Outcome comparison between IPTE and CTE after LT

Of the 10 studies for quantitative analysis, 7 reported time to discharge from ICU stay (TDICU), with a mean range of 0.9 to 5.7 days in IPTE group and 1.5 to 11.2 days in CTE group; 6 reported time to discharge from the hospital (TDH), with a mean range of 9.1–29.6 days in IPTE group and 19 to 31 days in CTE group; 8 reported re-intubation rate (RI), with a mean range of 0% to 11.7% in IPTE group and 0% to 35.6% in CTE group; 3 reported morbidity rate (MR), with a mean range of 0% to 10.6% in IPTE group and 11.8% to 43.9% in CTE group; 4 reported ICU survival rate (ICUS), with a mean range of 98.5% to 100% in IPTE group and 73.8% to 98.3% in CTE group.

IPTE had the significant advantages over CTE in reducing TDICU (MD -2.12 days, 95% CI -3.04 to -1.19 days; Fig. 3A), TDH (MD -6.43 days, 95% CI -9.53 to -3.33 days; Fig. 3B), RI (odds ratio [OR] 0.29, 95% CI 0.22–0.39; Fig. 3C) and MR (OR 0.15, 95% CI 0.08–0.30; Fig. 3D) through main analysis. The results from 2 kinds of subgroup analyses were identical to those of the main analysis (Fig. A–D in Fig. 3, and Figs. O–Q in Appendix 2). Nor was there a difference by the sensitivity analysis using alternative effect measures (Figs. R–V in Appendix 2), indicating the robustness of main results.

Regarding ICUS, the *P*-value of .02 derived from the main analysis did not satisfy our previous set value (*P* < .01) for the significance of the difference. However, subgroup analysis showed IPTE had a higher ICUS than CTE did when fast-track anesthesia was adopted (OR 11.56 95% CI 1.72–77.88; Fig. 3E).

3.5. Indications, anesthesia, extubation criteria, complications, re-intubation causes, and overall survival rates

For IPTE, there was a total of 954 patients diagnosed with postnecrotic cirrhosis and 302 patients with liver malignancy (Appendix 3A). Hepatitis C virus-related cirrhosis was the most common diagnosis, which accounted for 21.9% of all indications in the IPTE group. The constituent of indications was generally similar in both groups but still had a little difference. Compared with CTE group, IPTE group had a little larger proportion of patients with the multi-virus-related cirrhosis and hepatic cellular cancer (HCC), yet had a smaller proportion of patients with acute liver failure and re-liver-transplantation (Fig. 4A and Appendix 3A).

Regarding anesthesia, the fast-track anesthesia is a balanced anesthetic regimen that aims at early-extubation. This anesthetic approach usually adopted inhalation-based anesthetic techniques, prominently featured with the increased use (21.1%) of remifentanyl in recent years and taking up the majority with a proportion of 81.7% when compared with total intravenous anesthesia (Fig. 4B and Appendix 3B).

With respect to extubation criteria, a good respiratory pattern, a sufficient tidal volume, and an awake state were the top 3 basic items, which accounted for 96.4%, 95.2%, and 62.8%, respectively (Fig. 4C and Appendix 3C). In criteria for “immediate,” the top 3 items were no significant cardiac or pulmonary disease, no large blood transfusion and no severe encephalopathy, which accounted for 14.2%, 10.6%, and 9.6%, respectively (Fig. 4C and Appendix 3C).

Regarding complications, the differences were from the graft dysfunction rate (GD), which was 0.3% in the IPTE group, while 3.8% in the CTE group (*P* < .01) (Fig. 4D and Appendix 3D).

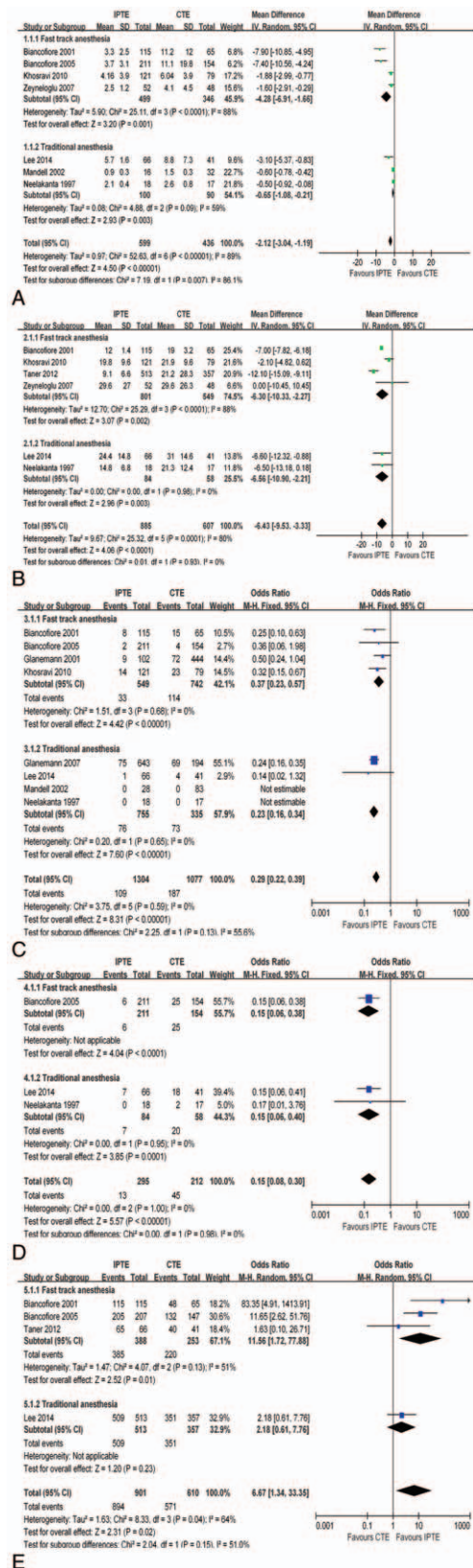


Figure 3. Outcome comparison between IPTE and CTE after LT. (A). Times to discharge from ICU stay (TDICU); (B). Times to discharge from the hospital (TDH); (C). Re-intubation rate (RI); (D). Morbidity rate (MR); (E). ICU survival rate (ICUS).

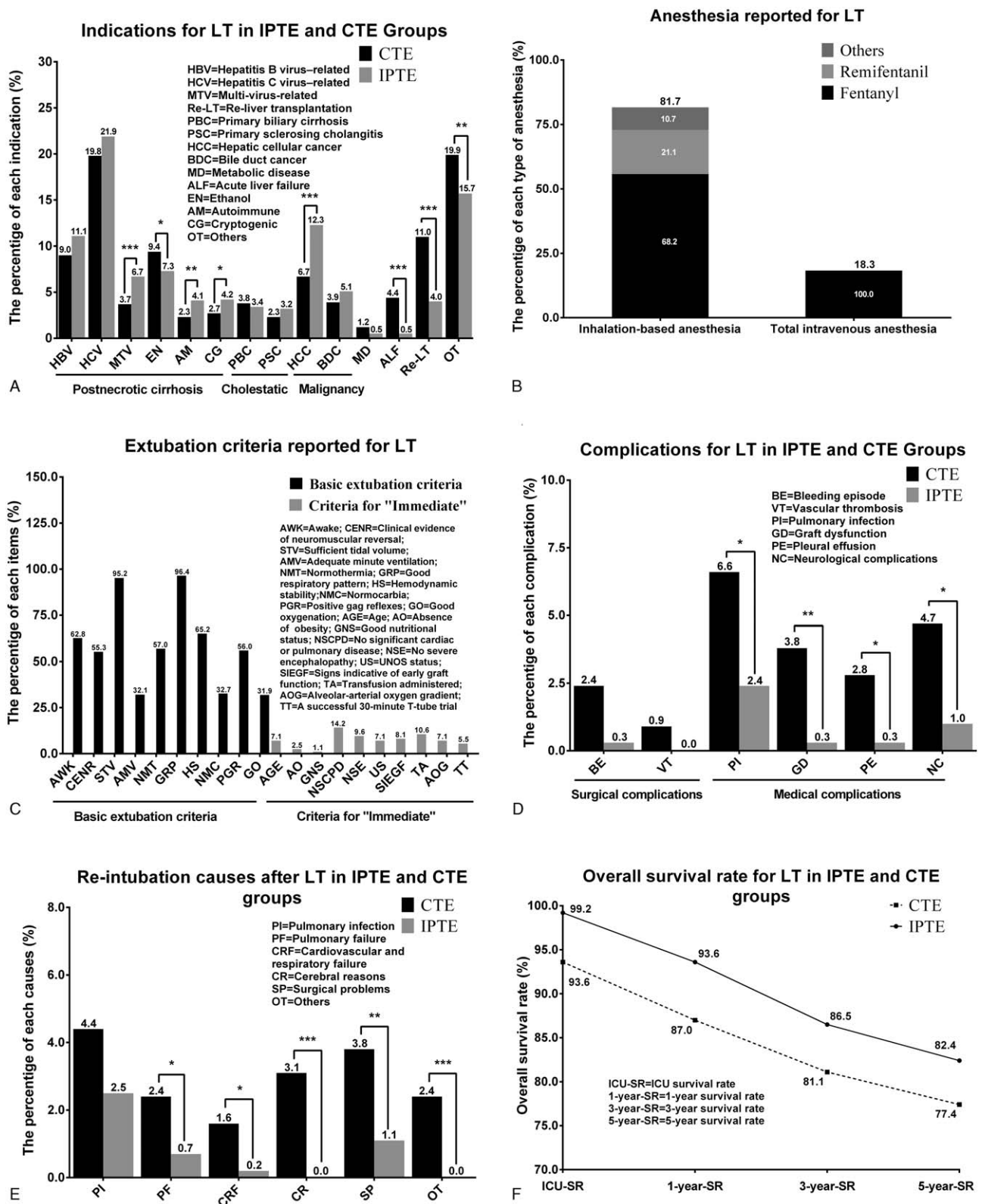


Figure 4. Indications, anesthesia, extubation criteria, complications, re-intubation causes and overall survival rate. (A). Indications for LT in IPTE and CTE groups; (B). Anesthesia reported for LT; (C). Extubation criteria reported for LT; (D). Complications for LT in IPTE and CTE groups; (E) Re-intubation causes after LT in IPTE and CTE groups; (F) Overall survival rate for LT in IPTE and CTE groups.

Table 2**Risk of bias of cohort studies included for quantitative synthesis.**

Ref. Year	Period of data collection	Representativeness of the exposed cohort	Selection of the non exposed cohort	Ascertainment of exposure	Demonstration that outcome of interest was not present at the start of the study	Comparability of cohorts on the basis of the design or analysis	Assessment of outcome	Was follow-up long enough for outcomes to occur	Adequacy of follow up of cohorts
Neelakanta, 1997 ^[20]	1994–1995	Patients after LT	Drawn from the same community	Extubation in the OR	Yes	Study controls for gender, weight, clinical diagnosis, Child's Pugh class and preoperative laboratory data	Medical records linkage	Not explicitly mentioned	Two patients excluded from the analysis of outcome
Glanemann, 2001 ^[22]	1992–1996	Patients after OLT	Ibid	Immediate extubation	Yes	Study controls for operation time, cold ischemic time, age, indications, and requirement of blood components	Ibid	Yes	All patients with complete follow up
Biancofiore, 2001 ^[21]	1997–1999	Patients after OLT	Ibid	Extubation <3 hours	Yes	Study controls for age, sex, Child's Pugh class and UNOS status	Ibid	Yes	Ibid
Mandelli, 2002 ^[28]	1996–1998	Patients after LT	Ibid	Immediate extubation	Yes	Study controls for gender, race, UNOS status, encephalopathy, coagulation and surgery type	Ibid	Not explicitly mentioned	Ibid
Biancofiore, 2005 ^[9]	1999–2004	Patients after OLT	Ibid	Immediate extubation	Yes	Study controls for Child's Pugh class, UNOS status, underlying liver disease, cold ischemic time and duration of surgery.	Ibid	Not explicitly mentioned	Ibid
Glanemann, 2007 ^[23]	1997–2005	Patients after LT	Ibid	Extubation in the OR	Yes	Study controls for age, preservation injury, cold ischemic time, duration of surgery and veno-venous bypass	Ibid	Yes	Ibid
Zeyneloglu, 2007 ^[24]	2004–2006	Patients after OLT	Ibid	Extubation in the OR	Yes	Study controls for age, sex, weight, clinical diagnosis, Child's Pugh class, duration of surgery, anhepatic time, preoperative laboratory data except for the serum creatinine level	Ibid	Not explicitly mentioned	Ibid
Khosravi, 2010 ^[25]	2003–2006	Patients after LT	Ibid	Early extubation	Yes	Study controls for age, weight, clamping time, duration of surgery, MELD score and arterial blood gas analysis data.	Ibid	Not explicitly mentioned	Ibid
Taner, 2012 ^[26]	2003–2007	Patients after LT	Ibid	Early extubation	Yes	Study controls for Sex, BMI, race, donor age, donor Sex, donor risk index	Ibid	Yes	Ibid
Lee, 2014 ^[27]	2011–2012	Patients after LDLT	Ibid	Early extubation	Yes	Study controls for age, BMI, indications, arterial blood gas analysis data, donor age, donor BMI, fatty change of graft by biopsy (%), the graft-to-recipient weight ratio (%)	Ibid	Not explicitly mentioned	Ibid

BMI=body mass index, LDLT=living donor LT, LT=liver transplantation, OLT=orthotopic LT, OR=operating room, UNOS=the united network for organ sharing.

About the re-intubation cause, pulmonary infection was the most common one, accounted for 2.5% in the IPTE group and 4.4% in the CTE group. In addition, the CTE group had more re-intubation cases due to encephalopathy and surgical problems ($P < .01$) (Fig. 4E and Appendix 3E).

The overall survival rates for LT were shown in Fig. 4F and Appendix 3F. The ICU, 1-, 3- and 5-year OS, were pooled to be 99.2%, 93.6%, 86.5%, and 82.4%, respectively, favoring IPTE.

3.6. Evidence from the studies for qualitative synthesis

Of the 5 studies^[2,29–32] for qualitative synthesis, one^[29] was a prospective cohort and 4^[2,30–32] were case series. The prospective cohort,^[29] a 2-center study, indicated IPTE of selected LT patients to be safe with the reintubation rate of 8% (2 out of 25) and to be cost-effective with the average saving of \$2709 in Colorado, 1995.

Of the 4 case series,^[2,30–32] one^[31] was a 7-institutions-involved study. Their results showed a few pulmonary or surgically related adverse events occurred in 7.7% of 391 patients after IPTE. The remaining 3 studies^[2,30,32] confirmed the safety and cost-effectiveness of IPTE.

3.7. Quality of included studies and risk of bias

All the studies used patients' medical records for their analyses (Table 2). The IPTE exposures were inconsistent across those studies, 7^[9,20–23,25,27] studies described the detailed time interval, but 3^[24,26,28] studies failed to give the detailed description. We sparingly pigeonholed the 3 ones as “< 8 hours v control,” with the risk of adjustment questionable. Moreover, most cohort studies failed to report the level of quality of follow-up. Because of these limitations, the risk of bias associated with eligible data was low to moderate.

4. Discussion

In this systematic review and analysis of the ten retrospective studies (low to moderate risk of bias involving 1965 cases of IPTE among 3387 patients), one prospective study (moderate risk of bias involving 53 cases of IPTE among 217 patients) and 4 case series (moderate risk of bias involving 540 IPTE among 540 patients) we found the evidence to suggest IPTE has its advantages over CTE, regarding of reducing TDICU, TDH, RI, MR, GD, and of a similar ICUS with CTE. Potential risk factors should be considered when considering the actual situation. Regarding of TDH, not a few researchers gave up the analysis of the relationship between extubation and TDH, due to confounding factors such as episodes of patient's rejection, payment issues, out of service for hospital discharge on weekends and holidays and so on. Another issue is the possibility of the bias that comes from the regional imbalance of data sources. By 2013, LT was performed in over 80 countries worldwide,^[33] however, 86.6% (3588/4144) of our data came from only 4 countries in Europe and North America as a result of the technical imbalance.

To date, our study provides the first systematic review and meta-analysis of outcome comparison between IPTE and CTE after LT. We found and identified 5 reviews^[4,5,8,15,34] which overviewed IPTE after LT. The 5 reviews reached complete agreement on IPTE's advantages of reducing TDICU, TDH, and costs. With respect to cost saving, we failed to do the quantitative synthesis because of the different baseline of the data. According to the existing literature, we learned that ICU care fee accounts

for more than 25% of the total cost of LT.^[10] The reducing of TDICU theoretically could reduce the high cost of ICU services^[4,34] and facilitate the management of available resources.^[4]

Minimizing the incidence of complications and maximizing the survival rates should be the prerequisite for IPTE.^[15] Our results showed reduced RI, MR, and comparable ICUS, which were coordinated with the most reviews.^[4,15,34] We also found the pulmonary complication was the most common cause for re-intubation but could be resolved in most cases by means of increasing ambient oxygen concentration.^[34] Moreover, we found the graft dysfunction rate was significantly lower in the IPTE group than that in the CTE group, which was not revealed in the previous reviews.

Interestingly, a successful IPTE is more likely to happen to patients with liver malignancy, which may be ignored by most researchers. On this point, our result confirmed Taner's^[26] view that patients with higher MELD scores assigned by sickest-first prioritization-based allocation system due to the diagnosis of hepatic cellular cancer or cholangiocarcinoma might be ideal candidates for IPTE after LT.

5. Conclusion

In summary, the available evidence suggests that compared with CTE, IPTE can reduce TDICU, TDH, RI, MR, GD and have a similar ICUS. Our conclusion would be of assistance in the promotion of clinical application of IPTE. However, further carefully designed and conducted RCTs are warranted to definitively establish the extent, if any, of increased risk.

Author contributions

Conceptualization: Jianbo Li, Chengdi Wang, Lunan Yan, Jiayin Yang.

Data curation: Jianbo Li, Chengdi Wang.

Formal analysis: Yuting Jiang, Jiulin Song, Longhao Zhang, Nan Chen, Rui Zhang, Lan Yang, Qin Yao, Li Jiang.

Methodology: Jian Yang.

Writing – original draft: Yang Yang.

Writing – review & editing: Tao Zhu, Weimin Li, Lunan Yan.

References

- [1] Starzl TE. The long reach of liver transplantation. *Nat Med* 2012;18:1489–92.
- [2] Quiroga M, Rodriguez MG, Montalvan C, et al. Trends in mechanical ventilation and immediate extubation after liver transplantation in a single center in Chile. *Transplant Proc* 2004;36:1683–4.
- [3] Faenza S, Ravaglia MS, Cimatti M, et al. Analysis of the causal factors of prolonged mechanical ventilation after orthotopic liver transplant. *Transplant Proc* 2006;38:1131–4.
- [4] Wu J, Rastogi V, Zheng SS. Clinical practice of early extubation after liver transplantation. *Hepatobil Pancr Dis Int* 2012;11:577–85.
- [5] Anishevich S, Pai SL. Fast track anesthesia for liver transplantation: review of the current practice. *World J Hepatol* 2015;7:2303–8.
- [6] Yuan H, Tuttle-Newhall JE, Chawa V, et al. Prognostic impact of mechanical ventilation after liver transplantation: a national database study. *Am J Surg* 2014;208:582–90.
- [7] Luo XR, Zeng GB, Liu SR, et al. Impact of adaptive positive end expiratory pressure and mechanical ventilation on hemodynamics and oxygen kinetics in post-liver transplantation patients. *Zhongguo Wei Zhong Bing Ji Jiu Yi Xue* 2007;19:404–7.
- [8] Plevak DJ, Torsher LC. Fast tracking in liver transplantation. *Liver Transplant Surg* 1997;3:447–8.
- [9] Biancofiore G, Bindi ML, Romanelli AM, et al. Fast track in liver transplantation: 5 years' experience. *Eur J Anaesthesiol* 2005;22:584–90.

- [10] Showstack J, Katz PP, Lake JR, et al. Resource utilization in liver transplantation: effects of patient characteristics and clinical practice. NIDDK Liver Transplantation Database Group. *JAMA* 1999;281:1381–6.
- [11] Taylor MC, Greig PD, Detsky AS, et al. Factors associated with the high cost of liver transplantation in adults. *Can J Surg* 2002;45:425–34.
- [12] Steenhagen E. Enhanced recovery after surgery: it's time to change practice!. *Nutr Clin Pract* 2016;31:18–29.
- [13] Rossaint R, Slama K, Jaeger M, et al. Fluid restriction and early extubation for successful liver transplantation. *Transplant Proc* 1990;22:1533–4.
- [14] Blaszczyk B, Wronska B, Klukowski M, et al. Factors affecting breathing capacity and early tracheal extubation after liver transplantation: analysis of 506 cases. *Transplant Proc* 2016;48:1692–6.
- [15] Glanemann M, Busch T, Neuhaus P, et al. Fast tracking in liver transplantation. Immediate postoperative tracheal extubation: feasibility and clinical impact. *Swiss Med Wkly* 2007;137:187–91.
- [16] Moher D, Liberati A, Tetzlaff J, et al. Preferred reporting items for systematic reviews and meta-analyses: the PRISMA statement. *BMJ* 2009;339:b2535.
- [17] Stroup DF, Berlin JA, Morton SC, et al. Meta-analysis of observational studies in epidemiology: a proposal for reporting. Meta-analysis Of Observational Studies in Epidemiology (MOOSE) group. *JAMA* 2000;283:2008–12.
- [18] Stang A. Critical evaluation of the Newcastle–Ottawa scale for the assessment of the quality of nonrandomized studies in meta-analyses. *Eur J Epidemiol* 2010;25:603–5.
- [19] Glanemann M, Langrehr JM, Muller AR, et al. Incidence and risk factors of prolonged mechanical ventilation and causes of reintubation after liver transplantation. *Transplant Proc* 1998;30:1874–5.
- [20] Neelakanta G, Sopher M, Chan S, et al. Early tracheal extubation after liver transplantation. *J Cardiothorac Vasc Anesth* 1997;11:165–7.
- [21] Biancofiore G, Romanelli AM, Bindi ML, et al. Very early tracheal extubation without predetermined criteria in a liver transplant recipient population. *Liver Transpl* 2001;7:777–82.
- [22] Glanemann M, Langrehr J, Kaisers U, et al. Postoperative tracheal extubation after orthotopic liver transplantation. *Acta Anaesthesiol Scand* 2001;45:333–9.
- [23] Glanemann M, Hoffmeister R, Neumann U, et al. Fast tracking in liver transplantation: which patient benefits from this approach? *Transplant Proc* 2007;39:535–6.
- [24] Zeyneloglu P, Pirat A, Guner M, et al. Predictors of immediate tracheal extubation in the operating room after liver transplantation. *Transplant Proc* 2007;39:1187–9.
- [25] Khosravi MB, Lahsaei M, Ghafaripour S, et al. Factors affecting early and late extubation in liver transplant patients. *Iran Red Crescent Me* 2010;12:172–5.
- [26] Taner CB, Willingham DL, Bulatao IG, et al. Is a mandatory intensive care unit stay needed after liver transplantation? Feasibility of fast-tracking to the surgical ward after liver transplantation. *Liver Transpl* 2012;18:361–9.
- [27] Lee S, Sa GJ, Kim SY, et al. Intraoperative predictors of early tracheal extubation after living-donor liver transplantation. *Kor J Anesthesiol* 2014;67:103–9.
- [28] Mandell MS, Lezotte D, Kam I, et al. Reduced use of intensive care after liver transplantation: patient attributes that determine early transfer to surgical wards. *Liver Transpl* 2002;8:682–7.
- [29] Mandell MS, Lockrem J, Kelley SD. Immediate tracheal extubation after liver transplantation: experience of two transplant centers. *Anesth Analg* 1997;84:249–53.
- [30] Ferraz-Neto BH, Silva ED, Afonso RC, et al. Early extubation in liver transplantation. *Transplant Proc* 1999;31:3067–8.
- [31] Mandell MS, Stoner TJ, Barnett R, et al. A multicenter evaluation of safety of early extubation in liver transplant recipients. *Liver Transpl* 2007;13:1557–63.
- [32] Ulukaya S, Ayanoglu HO, Acar L, et al. Immediate tracheal extubation of the liver transplant recipients in the operating room. *Transplant Proc* 2002;34:3334–5.
- [33] Zarrinpar A, Busuttil RW. Liver transplantation: past, present and future. *Nat Rev Gastroenterol Hepatol* 2013;10:434–40.
- [34] Mandell MS, Campsen J, Zimmerman M, et al. The clinical value of early extubation. *Curr Opin Organ Transplant* 2009;14:297–302.