

RESEARCH ARTICLE

Integrated screening and treatment services for HIV, hypertension and diabetes in Kenya: assessing the epidemiological impact and cost-effectiveness from a national and regional perspective

Parastu Kasaie^{1,§} , Brian Weir², Melissa Schnure¹, Chen Dun², Jeff Pennington¹, Yu Teng³, Richard Wamai⁴, Kipkoech Mutai⁵, David Dowdy¹ and Chris Beyrer¹ 

[§]**Corresponding author:** Parastu Kasaie, 615 N Wolfe St, E6530, Baltimore 21205, USA. Tel: (001) 443 287 6179. (pkasaie@jhu.edu)

Abstract

Introduction: As people with HIV age, prevention and management of other communicable and non-communicable diseases (NCDs) will become increasingly important. Integration of screening and treatment for HIV and NCDs is a promising approach for addressing the dual burden of these diseases. The aim of this study was to assess the epidemiological impact and cost-effectiveness of a community-wide integrated programme for screening and treatment of HIV, hypertension and diabetes in Kenya.

Methods: Coupling a microsimulation of cardiovascular diseases (CVDs) with a population-based model of HIV dynamics (the Spectrum), we created a hybrid HIV/CVD model. Interventions were modelled from year 2019 (baseline) to 2023, and population was followed to 2033. Analyses were carried at a national level and for three selected regions (Nairobi, Coast and Central).

Results: At a national level, the model projected 7.62 million individuals living with untreated hypertension, 692,000 with untreated diabetes and 592,000 individuals in need of ART in year 2018. Improving ART coverage from 68% at baseline to 88% in 2033 reduced HIV incidence by an estimated 64%. Providing NCD treatment to 50% of diagnosed cases from 2019 to 2023 and maintaining them on treatment afterwards could avert 116,000 CVD events and 43,600 CVD deaths in Kenya over the next 15 years. At a regional level, the estimated impact of expanded HIV services was highest in Nairobi region (averting 42,100 HIV infections compared to baseline) while Central region experienced the highest impact of expanded NCD treatment (with a reduction of 22,200 CVD events). The integrated HIV/NCD intervention could avert 7.76 million disability-adjusted-life-years (DALYs) over 15 years at an estimated cost of \$6.68 billion (\$445.27 million per year), or \$860.30 per DALY averted. At a cost-effectiveness threshold of \$2,010 per DALY averted, the probability of cost-effectiveness was 0.92, ranging from 0.71 in Central to 0.92 in Nairobi region.

Conclusions: Integrated screening and treatment of HIV and NCDs can be a cost-effective and impactful approach to save lives of people with HIV in Kenya, although important variation exists at the regional level. Containing the substantial costs required for scale-up will be critical for management of HIV and NCDs on a national scale.

Keywords: HIV; diabetes mellitus; hypertension; Kenya; cost-benefit analysis; computer simulation

Additional Supporting Information may be found online in the Supporting Information tab for this article.

Received 27 September 2019; Accepted 3 April 2020

Copyright © 2020 The Authors. *Journal of the International AIDS Society* published by John Wiley & Sons Ltd on behalf of the International AIDS Society.

This is an open access article under the terms of the Creative Commons Attribution License, which permits use, distribution and reproduction in any medium, provided the original work is properly cited.

1 | INTRODUCTION

The HIV epidemic in Kenya is one of the largest globally, with an estimated 1.6 million people living with HIV (PLHIV) in 2018 [1]. According to the Joint United Nations Programme on HIV/AIDS (UNAIDS), approximately 89% of PLHIV knew their status and 75% were on treatment in 2018 [2], leaving a gap in HIV testing and treatment initiation. At the same time, the burden of non-communicable diseases (NCDs) in Kenya is increasing. Data from a Kenya health and demographic

surveillance system found that deaths due to NCDs increased from 35% of total deaths in 2003 to 45% in 2010 [3,4]. The 2015 Kenya STEPwise approach to Surveillance (STEPS) survey reports the age-standardized prevalence of hypertension at 24.5%, pre-diabetes at 3.1%, and diabetes mellitus at 2.4% [4]. Importantly, only 15.6% of those with hypertension were aware of their elevated blood pressure, and among those aware, only 26.9% were on treatment [4]. For those with pre-diabetes or diabetes mellitus, 43.7% were aware of their condition and about 20% were on treatment [4].

In response to the ongoing epidemic of HIV and increasing burden of NCDs, and realistic restrictions in health budget, policy makers require efficient approaches to resource allocation. One such approach is the community-based, multi-disease testing and treatment strategy used in the Sustainable East Africa Research in Community Health trial, or SEARCH [5]. This trial, based in rural Uganda and Kenya, provided integrated screening for HIV, hypertension and diabetes, and facilitated linkage to care for those in need of treatment [5]. The results suggest the intervention's success in achieving high levels of testing coverage, linkage to HIV and NCD care and viral suppression after 1-year [6-8]. Nevertheless, the population-level impact and cost-effectiveness of such interventions at a national level remain uncertain. Furthermore, regional heterogeneities in factors relating to HIV transmission, NCD burden and population demographics may result in differential effectiveness and efficiency of such programmes when implemented at a regional level. As such, we sought to model the epidemiological impact and cost-effectiveness of an integrated programme similar to project SEARCH at a national and regional level in Kenya.

2 | METHODS

Coupling a microsimulation of cardiovascular diseases (CVDs) with a population-based HIV model (the Spectrum [9]), we created a hybrid model of HIV/CVDs (Figure 1). Population demographics and HIV epidemiology were estimated from Spectrum, and individual-level risks for NCDs were estimated from the 2015 Kenyan STEPwise survey [10]. Separate models were developed to represent Kenya at a national level and for three selected regions (namely Nairobi, Central and Coast). Access to all data and models were granted through corresponding agencies. Patient consent and ethical review were not required.

2.1 | The Spectrum model

The Spectrum software (Avenir Health, Glastonbury, CT, USA) is applied by the Joint United Nations Programme on HIV/AIDS (UNAIDS) to estimate key HIV indicators for 161 countries around the world [9]. Country-specific models are maintained and updated by a team of country expert on a regular basis. The Kenyan AIDS impact model (AIM) is calibrated to the 2019 official HIV estimates from National AIDS Control Council. Access to the latest release of national and regional Spectrum models was granted through UNAIDS (Data S1). This deterministic model represents a simplified representation of HIV and demographics in Kenya. This deterministic model represents a simplified representation of HIV and demographics in Kenya.

2.2 | CVD microsimulation model

The underlying structure of our CVD microsimulation is based on a recently published cost-effectiveness analysis of CVD management in Kenya [11]. To quantify the epidemiological and economic burden of hypertension and diabetes, we focused on the subsequent effect of these conditions on the incidence of major CVD events that could result in death or

disability. For this purpose, we used the individual-level data from the 2015 Kenyan STEPwise survey [10] and estimated the 10-year risk of first CVD event for surveyed individuals via the Framingham calculator [12] (Figure 1A). The Framingham calculator was developed in North America and may not fully generalize to Kenya, but no other simple calculators based on African populations exist.

Next, we defined eight risk categories (Table 1) based on binary classifications of Framingham-calculated 10-year CVD risk (greater or less than 10%), hypertension (blood pressure greater or less than 140/90 mmHg) and Type 2 diabetes status (present or absent), and estimated the population proportion falling within each risk-category by strata of sex and five-year age categories (sex/age). We adjusted these estimates to match the reported prevalence of hypertension and diabetes at a national and regional level in 2015. Our underlying goal in defining these risk categories was to develop a composite measure of individual-level risk for future CVD events—as a function of hypertension and diabetes status—which could represent the distribution of risks at a population level. Simulated individuals enter the model with an initial risk category determined according to the population risk profile. As individuals age with time, the model allows for transitions to higher risk categories.

We assumed that individuals falling within each risk category experience certain probabilities of future CVD events related to cardiovascular heart disease (CHD) (cardiac arrest, myocardial infarction [MI] or angina) and stroke. The risk of first CHD and stroke for each age, sex and ten-year risk stratum was derived from corresponding Framingham calculators [13,14]. Effective treatment for hypertension and diabetes are assumed to reduce the risk of both initial and subsequent CHD and stroke events; we thus conservatively ignore the benefits of such treatment on other events such as microvascular complications of diabetes. Table 2 provides a list of modelling parameters (Data S1).

2.3 | Hybrid HIV/CVD model

Figure 1C shows the logical relationship and flow of information within the hybrid HIV/CVD model. The microsimulation is coded in C++, and runs in discrete time steps representing one year. Main outcomes are reported as median values and 95% uncertainty ranges across 2,000 random simulations. Due to limited space, the results are presented in terms of median values throughout the text and 95% uncertainty ranges (when available) are provided in corresponding tables in each section.

The initial population is generated according to outputs from the Spectrum model at the end of year 2018, and is characterized in terms of HIV prevalence and ART coverage by sex and age (reported as five-year age categories). The microsimulation starts in year 2019 and runs to 2033.

Annual CVD dynamics are modelled directly at the individual-level as described above. HIV dynamics are modelled at a population-level via the Spectrum model, and the projected annual number of new HIV infections and HIV-related deaths by sex/age is imported into the hybrid model. Finally, the additional probability of death due to non-HIV/non-CVD causes is estimated by subtracting the simulated number of HIV and CVD deaths from the projected number of all-cause deaths in

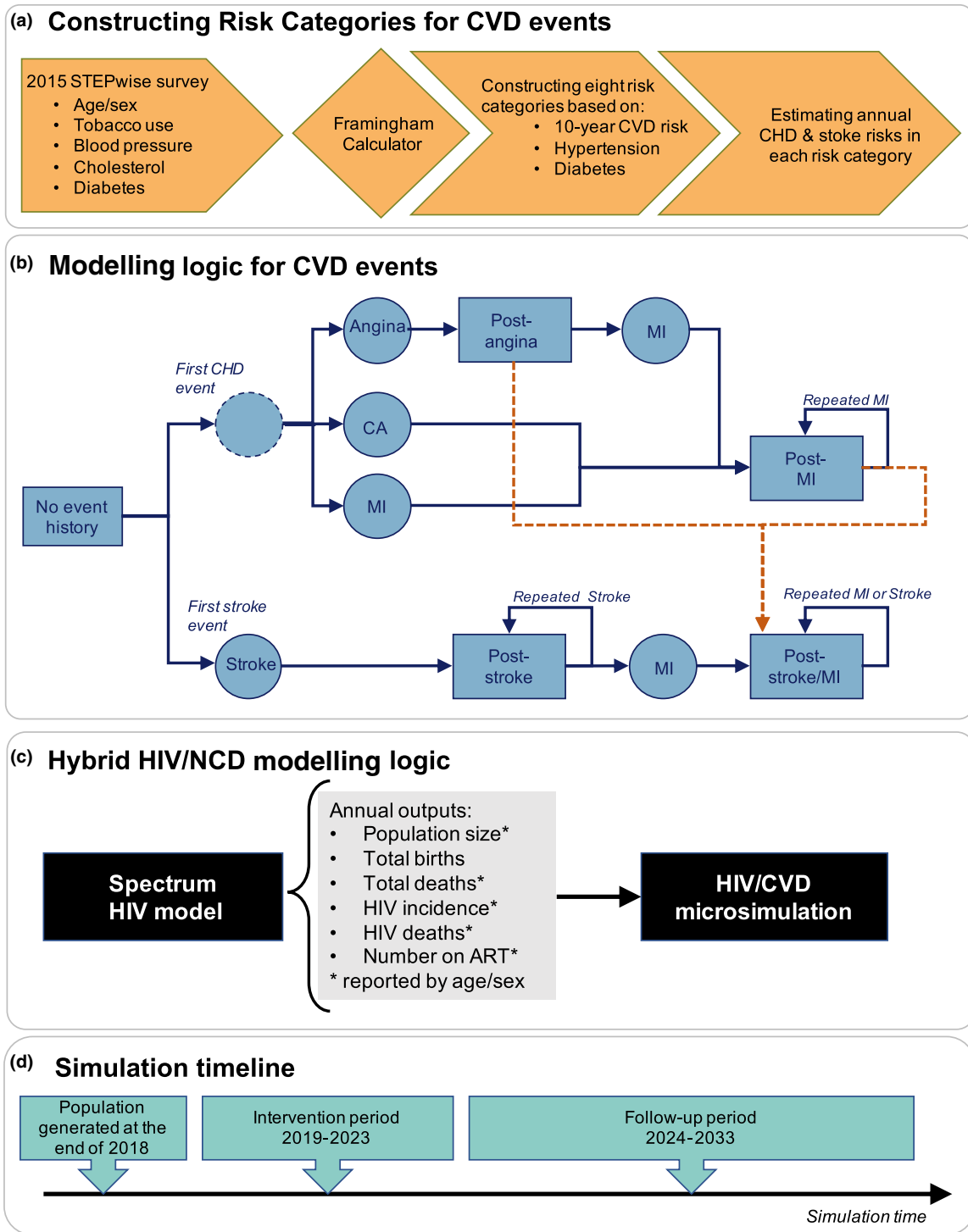


Figure 1. Hybrid HIV/CVD model overview.

Panel A illustrates the method for defining eight cardiovascular disease (CVD) risk categories using data from the 2015 STEPwise survey in Kenya. Panel B shows the schematic model of CVD events, namely cardiac arrest (CA), angina, myocardial infarction (MI) and stroke. Following a CVD event, individuals experience a probability of acute mortality in the first year. If they survive, they subsequently move to a post-event state in which they experience an increased annual risk of mortality, risk of new/repeated CVD events, and disability for future life years lived in the model. Dashed arrows showed in orange mark the risk of stroke among those in post-cardiovascular heart disease (CHD) states. Panel C shows the relationships and flow of information between Spectrum and the HIV/CVD microsimulation. Panel D shows the simulation timeline, starting in year 2019 and ending in 2033. Annual outputs from the Spectrum model are used to inform the demographic processes and HIV dynamics in the HIV/CVD microsimulation. To ensure a precision of results, the baseline and intervention scenarios are modelled across 2000 random simulations. All outcomes are reported as median values across these simulations.

Table 1. CVD risk group stratification based on 10-year CVD risk, hypertension and diabetes status^a

CVD risk category	Low CVD risk (<10%) ^b	Hypertension ^c	Diabetes ^d
Risk category 1	Yes	No	No
Risk category 2	No	No	No
Risk category 3	Yes	Yes	No
Risk category 4	No	Yes	No
Risk category 5	Yes	No	Yes
Risk category 6	No	No	Yes
Risk category 7	Yes	Yes	Yes
Risk category 8	No	Yes	Yes

^aCardiovascular diseases (CVDs).

^bTen-year CVD risk as estimated by the Framingham calculator [12].

^cIndividuals with systolic blood pressure ≥ 140 and/or diastolic blood pressure ≥ 90 are assumed to have hypertension.

^dIndividuals with a plasma venous value ≥ 7.0 mmol/L (126 mg/dL) or currently on blood glucose lowering medication are assumed to have diabetes. The Kenya 2015 STEPwise approach to Surveillance (STEPS) survey data is not reported separately for type 1 and type 2 diabetes. Given the low prevalence of type 1 diabetes in Kenya (at ~ 10-15% of total diabetes) and low prevalence of diabetes in the survey (~1.9% among both sexes), we assumed that the reported data represents type 2 diabetes.

Spectrum and dividing by the population size in each sex/age stratum in each year (Data S1).

2.4 | HIV/CVD Regional analysis

We expanded our national model of HIV/CVDs in Kenya to represent three regions including Nairobi, Coast and Central (Data S1). Each regional model was informed using estimates from the corresponding Spectrum model as discussed above. Given the lack of estimates from AIM on the impact of HIV interventions at the regional level, we used the national Spectrum model to estimate intervention's impact. We then applied these estimates to the regional models, weighted by sex/age, to project the future size of the HIV epidemic and the number of HIV-related deaths in each region.

2.5 | Modelled intervention

Following the framework of project SEARCH [15], we modelled a joint community outreach campaign for screening and treatment of HIV, hypertension and diabetes over five consecutive years (2019–2023), and followed the population for a decade after the end of the intervention to year 2033. To reflect ambitious but potentially feasible implementation, we assumed that the intervention targets 20% of the population in geographically distinct communities on an annual basis, and can reach up to 90% of eligible adults (aged 15+) who are assumed to undergo screening for HIV, hypertension and diabetes [16]. The average ART uptake (i.e. accounting for loss to care and re-engagement in care) was estimated at 73% for those HIV-infected individuals with no previous/current ART use [5,17].

To determine the impact of treatment for hypertension and diabetes, we estimated the average decrease in risk of future CVD events provided by long-term treatment. Specifically, we assumed that treatment for hypertension would result in an average 10-mmHg reduction in systolic blood pressure [18], and that treatment for diabetes would consist of metformin, a widely available and inexpensive first-line treatment for diabetes [19] (Table 2). At baseline, we assumed that 50% of all individuals newly diagnosed with hypertension or diabetes would remain consistently in care (i.e. that the intervention would meet 50% of the total time needed to successfully complete NCD treatment); this number was assumed to incorporate both incomplete linkage to care and net losses to follow-up (disengagement minus re-engagement) over time and was varied in sensitivity analysis.

The intervention scenario was compared against a baseline model in which ART coverage in 2018 (final year of data) was maintained at a fixed level from 2019 to 2033, and lifetime medication management for NCDs was kept to minimal levels [20-22] (Data S1).

2.6 | Cost-effectiveness analysis

Cost analyses from the SEARCH study provided estimates of disease screening and ART treatment [7,37]. Costs of standard care for CVD-related events were based on those estimated from public/semi-public healthcare facilities in Kenya [11]. All healthcare costs were reported in the year in which they occurred. For each scenario, disability-adjusted life years (DALYs) were estimated as years lost to HIV- or CVD-related disability and years of life lost to premature mortality. The cost-effectiveness ratio was reported at the end of simulation period (year 2033) and was assessed against a threshold of \$2,010 corresponding to Kenya's 2019 per-capita gross domestic product (GDP) [38]. In addition, we considered alternative cost thresholds (at increments of \$500 per DALY) that reflect more stringent willingness-to-pay thresholds for health interventions (Data S1).

2.7 | Sensitivity analysis

One-way sensitivity analysis was performed by varying the value of selected parameters to +/-15% of the original values (Table 2). For each analysis, we evaluated the changes in main outcomes in the national model, comparing integrated HIV/NCD scenario to the baseline (status-quo) scenario.

3 | RESULTS

3.1 | Population summary

The simulated populations were generated based on projections from Spectrum at a national- and regional level in 2018 (Table 3). The national Spectrum model estimated a population size of 50.9 million, an HIV prevalence of 3.3% (2.4% among men and 4.3% among women) and ART coverage of 68% among those in need of ART. This translated to an HIV incidence of 0.97 per 1000 person-years, corresponding to 16,419 and 30,020 new infections among men and women in 2018. The regional models reflected known heterogeneities in the burden of HIV and NCDs at local level, with the highest

Table 2. CVD microsimulation model parameters^a

Parameter	Value	Reference
CVD natural history ^b		
Probability of first CHD event type		
Cardiac arrest	10%	
MI	32% (males)/ 20% (females)	[23]
Angina	1 - probability of other events	[24]
Acute (one-year) mortality following a CVD event		
Cardiac arrest	0.95	[25]
MI	0.05	[26]
Angina	0.045	[27]
Stroke	0.38	[28]
Annual mortality (post-event)		
MI	0.04	[29]
Angina	0.03	[29]
Stroke	0.05	[29]
Annual risk of new event in post-event states		
Repeated MI post-MI	0.064	[30]
MI post-angina	0.035	[31]
Repeated stroke post-stroke	0.04	[32]
Intervention characteristics ^c		
Annual screening coverage	20% of population	Assumption
Screening success	90%	[16]
NCD treatment uptake & long-term medication management	50%	Assumption
NCD treatment effectiveness ^{c,d}		
% reduction in CHD events with hypertension treatment among people		[18]
- With diabetes	88%	
- Without diabetes	77%	
% reduction in stroke events with hypertension treatment among people		[18]
- With diabetes	74%	
- Without diabetes	74%	
% reduction in CHD and stroke events with diabetes treatment	79%	[19]
Costs (2018 USD) ^c		
Acute care for cardiac arrest	1,049.14	[33]
Acute care for MI	2,041.02	[33]
Acute care for angina	1,264.90	[33]
Acute care for stroke	1,916.26	[33]
Non-acute care post-CHD	331.15 per year	[34]
Non-acute care post-stroke	993.44 per year	[34]
Screening for HIV	21.50	[7]
Screening for hypertension and diabetes	1.22	[7]
HIV treatment (ART)	297.51 per year	[35]
Hypertension treatment	77.65 per year	[33]

Table 2. (Continued)

Parameter	Value	Reference
Diabetes treatment	186.73 per year	[33]
Disability weights ^c		
Angina	0.08	[36]
Cardiac arrest	0.08	
MI	0.08 (first year) 0.072 (subsequent years)	
Stroke	0.152	
HIV	0.078 (on ART) 0.274 (off ART)	

^aNon-communicable diseases (NCD); Cardiovascular diseases (CVDs); Cardiovascular heart disease (CHD); Myocardial infarction (MI).

^bThe underlying structure of CVD natural history model and selected parameter values are based on Subramanian et al. (2019) [11].

^cParameters are varied within +/- 15% of their original values in sensitivity analysis.

^dNCD treatment effectiveness is estimated separately for hypertension and diabetes treatment, and the impact of combined treatments is modelled as independent and multiplicative (Data S1).

HIV incidence (1.09 per 1000 person-years) in Nairobi region and the highest hypertension prevalence (37.5%) in the Central region.

3.2 | HIV-related outcomes

In the status-quo scenario (maintaining ART coverage to reported levels at the end of year 2018), the HIV incidence in Kenya was projected to fall by 26% (ranging from 22% in Coast to 26% in Nairobi region) from 2019 to 2033 (Table 4). Increasing ART coverage to 88% of all people diagnosed with HIV by 2033 resulted in HIV incidence to fall by 64% within the same period. Compared to baseline, this corresponded to averting 347,000 HIV infections and 289,000 HIV deaths in Kenya by 2033. At a regional level, the absolute impact of expanded HIV services was highest in Nairobi, averting 42,000 HIV infections and 37,000 HIV deaths compared to baseline. However, the efficiency of expanded ART was highest in Coast region, with 0.06 HIV infections averted per additional person-year on ART. Despite the large reductions in HIV incidence and mortality under expanded ART, HIV prevalence remained relatively stable, reflecting better survival among individuals consistently on ART.

3.3 | NCD-related outcomes

At a national level and in the absence of expanded treatment for HIV, Diabetes and Hypertension, the model projected the prevalence of untreated hypertension and diabetes at 32.43% and 4.27% respectively by 2033 (Table 5). The HIV/NCD integrated screening covered estimated 5.5 million individuals annually from 2019 to 2023, diagnosing over 8.5m individuals with hypertension and 0.83 m with diabetes (Figure 2A). Assuming that these diagnoses result in treatment for 50% of subsequent eligible treatment time, the intervention was

Table 3. Baseline simulated population

Simulated population in 2018	National	Nairobi region	Central region	Coast region
Population size ^a	51.0 million	4.9 million	4.3 million	5.1 million
HIV prevalence ^a	3.35%	4.23%	3.19%	2.65%
ART coverage ^a	68.26%	67.88%	63.71%	68.71%
HIV incidence (per 1000/year) ^a	0.97	1.09	1.06	0.66
Hypertension prevalence ^b	24.1%	14.1%	37.5%	19.8%
Diabetes prevalence ^b	2.13%	3.84%	2.71%	2.01%

^aPopulation size and HIV outcomes were projected by the national and regional Spectrum AIDS Impact Models (AIM), calibrated to the 2019 official HIV estimates from national AIDS control council. Given the deterministic nature of the model, no information is available on uncertainty ranges.

^bThe baseline prevalence of hypertension and diabetes in each model were calibrated to estimated values from the Kenya 2015 STEPwise approach to Surveillance (STEPS) survey respectively. The prevalence is shown for individuals between the ages of 15 to 70 years, similar to the STEP survey. Values represent the median values across 2,000 simulations (uncertainty ranges were too small to show).

projected to reduce the prevalence of untreated hypertension to 27.51% and of untreated diabetes to 3.42% by 2033. This resulted in averting 116,600 CVD events and 43,600 CVD deaths by 2033. At a regional level, the intervention impact was highest in the Central region, averting 22,200 CVD events and 8300 CVD deaths over the next 15 years.

3.4 | Cost-effectiveness analysis

At a national level, the incremental costs of HIV/NCD integrated programme was estimated at \$6.68b over 15 years (Table 6). This reflected additional costs needed for: 5 years of screening for HIV (\$0.6b) and hypertension and diabetes (\$0.03b); increased treatment costs for HIV (\$1.18b), diabetes (\$1.28b) and hypertension (\$3.95b); as well as costs saved for CVD care (\$-0.35b) (Table 6; Figure 3). The intervention was estimated to avert 7.76m DALYs, for an incremental cost-effectiveness ratio of \$860 per DALY averted at the national-level. At a regional level, the intervention resulted in highest incremental costs in the Central region (\$945m) and saved the most DALYs in Nairobi (840,000). The cost per DALY averted was \$754 in Nairobi, \$818 in the Coastal region, and \$1500 in the Central region, all below the per capita GDP of \$2010 in Kenya.

Using the threshold of \$2010 per DALY averted, the probability that the intervention would be cost-effective was 91.8% at a national level, ranging from 71.28% in Central to 91.35% in Nairobi. As policy makers may prefer different willingness-to-pay thresholds, [39] we explored other thresholds through sensitivity analyses (Figure 3). Lowering the willingness-to-pay threshold to \$1,000 reduced the probability of cost-effectiveness to 59% at a national level, while increasing the heterogeneity at a regional level (with probabilities ranging from 70% in Nairobi to 55% in

Coast and only 5% in the Central region). The intervention did not remain cost-effective under a threshold \$500.

3.5 | Sensitivity analysis

All outcomes were sensitive to variation in value of parameters related to NCD screening/treatment coverage (e.g. annual screening coverage, screening success rate and NCD treatment uptake) (Figure 4). The epidemiological impact of intervention (measured by the number of CVD events and deaths averted) was also sensitive to variation in NCD treatment effectiveness (modelled as reduction in risk of CHD and stroke). The incremental costs were also sensitive to variation in cost of hypertension and diabetes treatment, comprising the biggest portion of intervention costs. With < 4% variations, DALYs were robust to variation in value of selected parameters, suggesting that the majority of DALYs in this population was due to HIV infection.

4 | DISCUSSION

Integrated, population-based screening and treatment for HIV and NCDs in Kenya could have substantial impact over 15 years, averting 64% of new HIV infections, 284,000 HIV-related deaths, 43,600 CVD-related deaths, and 7.8 million HIV- and CVD-related DALYs. At a commonly used threshold for cost-effectiveness (less than per capita GDP per DALY averted), this intervention was more than 90% likely to be cost-effective. However, the cost required to fully scale up this intervention was substantial, with a 15-year incremental cost of \$6.7 billion dollars, equivalent to an increase of 12% in Kenya's total health budget [40]. These results illustrate that integrated HIV/NCD diagnosis and management has the potential to be highly impactful and moderately cost-effective in a country like Kenya, but achieving these gains will only be possible with sustained financial and political commitment.

Our regional models reveal important geographic variation. Compared to the national estimate, the cost per DALY averted (for HIV and NCDs) was 74% higher in the Central region, where the prevalence was higher for hypertension but lower for HIV. These results are in line with previous reports of health disparities across counties in Kenya [41]. In scaling up integrated HIV/NCD care, therefore, the most efficient use of resources may be to first focus integration efforts on those regions with higher HIV prevalence, while maintaining separate HIV and NCD systems (i.e. focusing NCD management on older and other high-risk populations [42]) in settings where NCD prevalence is high but HIV prevalence is low.

Both overall costs and cost-effectiveness were highly sensitive to the cost of hypertension management, owing to the high prevalence of hypertension in this population (ranging from 2.3 times the prevalence of HIV in Nairobi region to 7.6 times HIV prevalence in Central region). We assumed that management of hypertension would cost \$78 per person-year, similar to other public-sector studies in sub-Saharan Africa [33,42] but lower than at least one estimate from Oyando et al. (\$304 per person-year)[43]. In a study of five rural counties in Western Kenya, Osetinsky et al. [44] find the cost of chronic disease medicine programmes to be lowest compared to other public NCD care programmes. However, the estimated per patient annual cost of NCD care in these programmes (\$27.50 to

Table 4. Summary of HIV-related outcomes in Kenya^a

	National		Nairobi region		Central region		Coast region	
	Baseline	Intervention	Baseline	Intervention	Baseline	Intervention	Baseline	Intervention
ART coverage								
Proportion of people living with HIV on ART in 2033	68.26%	88.21%	67.88%	87.39%	68.71%	87.50%	63.71%	85.75%
Total number on ART from 2019 to 2033 (million)	37.46 [32.20 to 53.10]	45.86 [38.3 to 62.70]	4.87 [4.20 to 6.90]	5.94 [5.00 to 8.10]	2.78 [2.40 to 3.90]	3.36 [2.80 to 4.60]	2.98 [2.60 to 4.20]	3.56 [3.00 to 4.90]
Additional person year on ART (million)		8.40 [6.20 to 10.10]		1.07 [0.80 to 1.30]		0.58 [0.40 to 0.70]		0.58 [0.40 to 0.70]
HIV incidence (per 1000/year)								
2018	0.97 [0.59 to 1.68]		1.09 [0.67 to 1.89]		0.66 [0.40 to 1.14]		1.06 [0.65 to 1.84]	
2033	0.72 [0.52 to 1.37]	0.35 [0.28 to 0.59]	0.81 [0.59 to 1.54]	0.39 [0.31 to 0.65]	0.51 [0.37 to 0.97]	0.25 [0.20 to 0.42]	0.83 [0.60 to 1.58]	0.39 [0.31 to 0.65]
% Reduction	25.77% [7.10% to 45.48%]	63.92% [48.29% to 66.06%]	25.69% [7.07% to 45.33%]	64.22% [48.52% to 66.37%]	22.73% [6.26% to 40.11%]	62.12% [46.93% to 64.20%]	21.7% [5.98% to 38.29%]	63.21% [47.76% to 65.32%]
HIV prevalence								
2018	3.35% [2.87% to 4.26%]		4.23% [3.62% to 5.37%]		2.65% [2.27% to 3.37%]		3.19% [2.73% to 4.05%]	
2033	2.43% [1.80% to 3.78%]	2.33% [1.73% to 3.62%]	2.99% [2.22% to 4.65%]	2.88% [2.14% to 4.48%]	2.03% [1.51% to 3.16%]	1.96% [1.45% to 3.05%]	2.37% [1.76% to 3.69%]	2.15% [1.60% to 3.34%]
% Reduction	27.55% [20.50% to 30.62%]	30.39% [26.58% to 32.33%]	29.35% [21.84% to 32.62%]	31.89% [27.89% to 33.93%]	23.41% [17.42% to 26.01%]	25.99% [22.73% to 27.65%]	25.54% [19.00% to 28.28%]	32.53% [28.45% to 34.61%]
New HIV infections								
Total from 2019 to 2033 (thousands)	734.27 [521.75 to 1,261.79]	387.55 [317.42 to 637.93]	87.01 [61.82 to 149.52]	44.87 [36.75 to 73.85]	49.45 [35.13 to 84.97]	25.7 [21.05 to 42.30]	71.28 [50.64 to 122.49]	36.56 [29.94 to 60.18]
Infections averted (thousands)		346.73 [196.79 to 629.64]		42.15 [23.92 to 76.54]		23.76 [13.48 to 43.15]		34.72 [19.70 to 63.05]
Infections averted per additional ART person/year		0.041		0.039		0.041		0.06
HIV deaths								
Total from 2019 to 2033 (thousands)	544.61 [449.49 to 619.60]	255.86 [217.87 to 295.29]	69.54 [57.39 to 79.11]	32.82 [27.94 to 37.88]	41.76 [34.46 to 48.51]	21.77 [18.53 to 25.12]	45.13 [37.24 to 51.34]	23.91 [20.36 to 27.59]
Deaths averted (thousands)		288.76 [231.79 to 342.25]		36.72 [29.47 to 43.52]		19.99 [16.04 to 23.69]		21.22 [17.03 to 25.15]

Table 4. (Continued)

	National		Nairobi region		Central region		Coast region	
	Baseline	Intervention	Baseline	Intervention	Baseline	Intervention	Baseline	Intervention
Deaths averted per additional ART person/year		0.034		0.034		0.034		0.036

^aHIV-related outcomes are projected by the Spectrum model for the baseline and intervention at a national and regional level. Models are initialized with a similar population in 2018 and are followed to year 2033. The baseline scenario assumes a fixed ART coverage at 2018 levels over time. The intervention scenario models a gradual increase in coverage of ART from 2019 to 2023 [assuming a fixed coverage afterwards, from year 2024 to 2033]. Values represents the median value [95% uncertainty ranges]. Uncertainty ranges are estimated across 1000 random simulations (generated by permuting epidemiological and behaviour parameters), weighted and resampled based on goodness of fit to the historical prevalence data (see Section 1.4 in Data S1).

Table 5. Summary of NCD-related outcomes in Kenya^{a,b}

	National	Nairobi region	Central region	Coast region
NCDs prevalence in 2033 ^c				
Baseline:				
Untreated hypertension	32.43% [32.40% to 32.45%]	25.94% [25.91% to 25.97%]	47.89% [47.86% to 47.91%]	26.41% [26.39% to 26.44%]
Untreated diabetes	4.27% [4.25% to 4.28%]	9.75% [9.73% to 9.77%]	6.05% [6.04% to 6.07%]	3.4% [3.39% to 3.42%]
Intervention:				
Untreated hypertension	27.51% [27.48% to 27.53%]	22.61% [22.58% to 22.63%]	38.73% [38.7% to 38.76%]	22.58% [22.55% to 22.61%]
Untreated diabetes	3.42% [3.41% to 3.44%]	8.43% [8.41% to 8.45%]	4.43% [4.42% to 4.45%]	2.79% [2.78% to 2.8%]
CVD events averted (2019 – 2033)				
MI	24,900 [17,900 to 31,300]	1600 [1000 to 2300]	4900 [4,100 to 5,700]	2000 [1,400 to 2,600]
Angina	12,500 [7,800 to 17,000]	1200 [700 to 1600]	3000 [2400 to 3500]	1100 [700 to 1500]
Cardiac Arrest	3200 [1200 to 5100]	200 [0 to 400]	500 [300 to 800]	200 [0 to 400]
Stroke	76,000 [66,400 to 86,100]	6200 [5300 to 7200]	13,800 [12,500 to 14,900]	5300 [4300 to 6200]
Total	116,600 [104,300 to 128,300]	9200 [8100 to 10,300]	22,200 [20,600 to 23,700]	8600 [7500 to 9800]
CVD deaths averted (2019 to 2033)				
MI	4800 [2200 to 7500]	300 [0 to 600]	1000 [700 to 1300]	1000 [700 to 1300]
Angina	1,500 [–700 to 3700]	100 [–100 to 400]	400 [200 to 700]	400 [200 to 700]
Cardiac Arrest	3000 [1000 to 4800]	200 [0 to 400]	500 [300 to 700]	500 [300 to 700]
Stroke	34,200 [27,700 to 41,000]	2800 [2100 to 3400]	6400 [5600 to 7200]	6400 [5600 to 7200]
Total	43,600 [3,6400 to 50,400]	3400 [2700 to 4100]	8300 [7500 to 9100]	8300 [7500 to 9100]

^aNon-communicable diseases (NCD); Cardiovascular disease (CVD); Myocardial infarction (MI).

^bNCD-related outcomes are projected by the HIV/NCD microsimulation for the baseline and intervention at a national and regional level. Models are initialized with a similar population in 2018 and are followed to year 2033. The baseline scenario assumes minimal NCD treatment. The intervention scenario models an annual campaign for screening and treatment on NCDs running from 2019-2023. Values represents the median [95% uncertainty ranges] across 2000 random simulations.

^cSee Data S1 for the uncertainty around the number people with untreated diabetes and hypertension in the initial and final cohort.

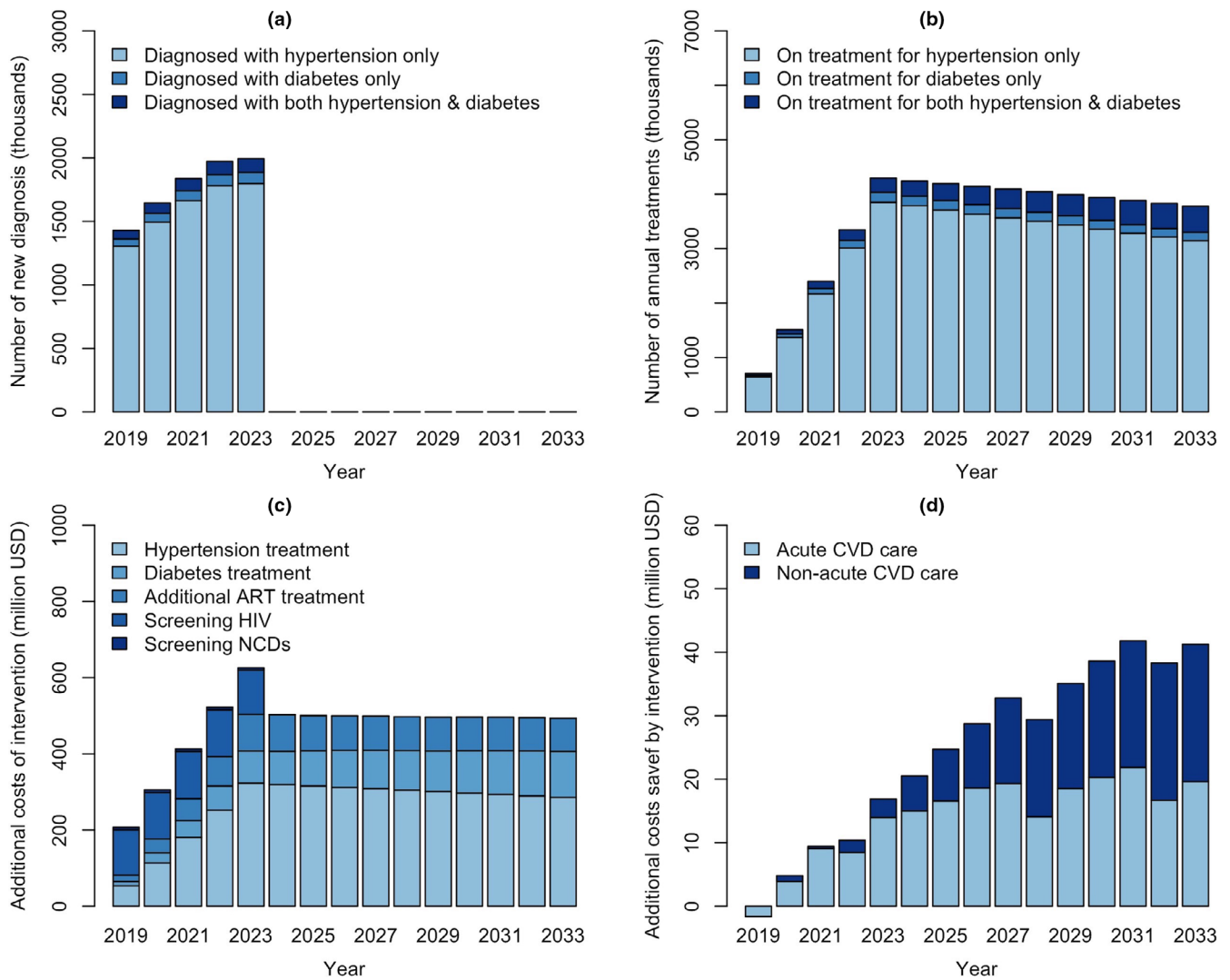


Figure 2. Projected outcomes from combined HIV/NCD diagnosis and management in Kenya.

The intervention runs from 2019-2023, screening 20% of the population on an annual basis for HIV, hypertension and diabetes. Panel A shows the annual number of people diagnosed with hypertension and/or diabetes. The intervention further provides treatment to a proportion of those diagnosed with HIV, hypertension and/or diabetes. Panel B shows the number of individuals receiving treatment for hypertension and/or diabetes over time. Costs are divided into two groups, including additional costs required for disease screening and treatment (Panel C) and costs saved by averting future CVD events (Panel D). ART, antiretroviral therapy; NCD, non-communicable diseases; CVD, cardiovascular disease.

\$154.06) was still higher than the per capita healthcare budget contributions (\$17.50 to \$20.00) in these counties, suggesting a large gap in budget for expanding and sustaining NCD care even via most efficient care delivery models. In our study, the costs of hypertension management accounted for over 60% of total costs, but CVD deaths accounted for only 15% of all deaths averted; thus, at this cost, HIV care appears much more cost-effective than NCD management. Mounting a national effort to manage hypertension and diabetes may hinge on cost minimization, which may include strategies from the HIV response where the cost of first-line HIV medications decreased by 99% from \$10,000 per person in 2000 to \$116 per person in 2010 [45,46].

As with any modelling study, this analysis has important limitations. First, both Spectrum and our NCD model employ a number

of simplifying assumptions (e.g. heterogeneous mixing within risk groups, estimating region-level impact of HIV interventions as reflective of national-level estimates, CVD risk within fixed categories) that do not fully capture the complex interplay between HIV and NCDs in Kenya. Second, we estimated CVD risk using the Framingham calculator, which allows for simple estimation of risk with a small number of input parameters and was calibrated to a largely white male population and may not accurately estimate CVD risk in African populations [47]. As genetics also play a role in NCD risks and Africa has genetically and ethnically diverse populations [48,49], further studies (e.g. using potential electronic health records) determine better prediction models for NCD-risk-profiles in African populations. Third, by focusing only on stroke and major CHD events, our model ignores other positive benefits of treating hypertension and diabetes (for example,

Table 6. Costs and DALYs required/saved by the integrated HIV and NCD care in Kenya^{a,b}

	National	Nairobi region	Central region	Coast region
Saved costs (2018 US dollars)				
Acute CVD care	0.22 [0.19 to 0.24] billion	16.94 [14.77 to 19.01] million	40.70 [37.72 to 43.45] million	15.85 [13.64 to 18.02] million
Non-acute CVD care	0.15 [0.11 to 0.20] billion	14.33 [10.43 to 18.56] million	32.18 [26.82 to 37.56] million	11.08 [7.02 to 18.02] million
Additional costs (2018 US dollars)				
ART	1.18 [1.17 to 1.20] billion	133.71 [132.20 to 135.16] million	83.81 [82.45 to 85.13] million	91.16 [89.83 to 92.51] million
Diabetes treatment	1.28 [1.27 to 1.29] billion	211.9 [210.67 to 213.23] million	207.46 [206.27 to 208.58] million	84.18 [83.36 to 84.98] million
Hypertension treatment				
Screening for HIV	603.34 [603.12 to 603.58] million	62.03 [62.00 to 62.05] million	67.63 [67.61 to 67.65] million	50.56 [50.54 to 50.59] million
Screening for diabetes and hypertension	34.24 [34.22 to 34.25] million	3,519.73 [3,521.09 to 3,518.35] thousand	3,837.83 [3,839.01 to 3,836.62] thousand	2,869.06 [2,870.42 to 2,867.70] thousand
Total Costs (2018 US dollars)				
Incremental costs	6.68 [6.61 to 6.74] billion	632.95 [626.79 to 638.75] million	945.29 [937.44 to 93.05] million	471.59 [466.08 to 476.99] million
Total DALYs				
Incremental DALYs averted	7.76 [8.01 to 7.51] million	839.13 [811.93 to 865.24]	632.88 [608.74 to 657.06]	576.82 [547.86 to 604.93]
Incremental costs per DALY (2018 USD)				
	860.36 [830.59 to 890.66]	754.04 [729.63 to 780.26]	1,493.07 [1,435.63 to 1,555.65]	818.01 [864.38 to 776.50]

^aNon-communicable diseases (NCD); Disability-adjusted life year (DALY); Cardiovascular disease (CVD).

^bValues represent the differences in simulated costs and DALYs between the baseline and intervention at a national and regional level. Future costs are discounted at 3%. Values represents the median [95% uncertainty ranges] across 2,000 random simulations.

reductions in microvascular complications of diabetes). Thus, our estimates of DALYs averted may be conservative. Fourth, in the absence of accepted cost-effectiveness thresholds, we benchmarked cost-effectiveness primarily against Kenya's per-capita GDP. Recent arguments [50] suggest that per-capita GDP thresholds may result in labelling a number of unaffordable interventions as "cost-effective"; to the extent that Kenya's true willingness or ability to pay for health interventions is lower, our model may be overly optimistic in its estimates of cost-effectiveness. Fifth, we did not account for dynamic changes in CVD risk (within sex/age stratum) over time. As trends in smoking and dietary intake change in Kenya [51-54], our estimates of future CVD risk may be underestimated or overestimated. Finally, some of our estimates (e.g. estimated population in specific low-probability CVD risk categories, particularly at the regional-level) are based on small sample sizes and thus subject to substantial uncertainty.

5 | CONCLUSIONS

We have constructed a model to evaluate the likely population-level impact and cost-effectiveness of a potential integrated HIV/NCD diagnosis and management programme

based on that of Project SEARCH in Kenya. We find that such an integrated programme could save more than 300,000 lives over a 15-year period, with substantial improvements in the dual epidemics of HIV and NCDs in this setting. Such a programme could be moderately cost-effective; cost-effectiveness could be substantially improved by lowering the cost of hypertension management. Important variations also existed at the subnational-level, arguing for a targeted approach to HIV/NCD integration that first focuses on regions with higher HIV prevalence. These findings are likely to generalize to other East African countries with similar epidemiology and economic conditions and may inform intervention design in sub-Saharan Africa more broadly, though studies of specific interventions in specific contexts are needed. Achieving these gains will only be possible with sufficient political will and ensuring increased financial commitment to support scale-up at the regional and national-levels.

Two decades ago, researchers had shown the epidemiological basis for CVDs control policies in sub-Saharan Africa [55]. Given Kenya's 2030 Health Policy framework and Big 4 Agenda for expanding universal health coverage [56,57], studies showing health insurance to have a positive effect on stemming HIV [58], and increasing affordability for NCDs

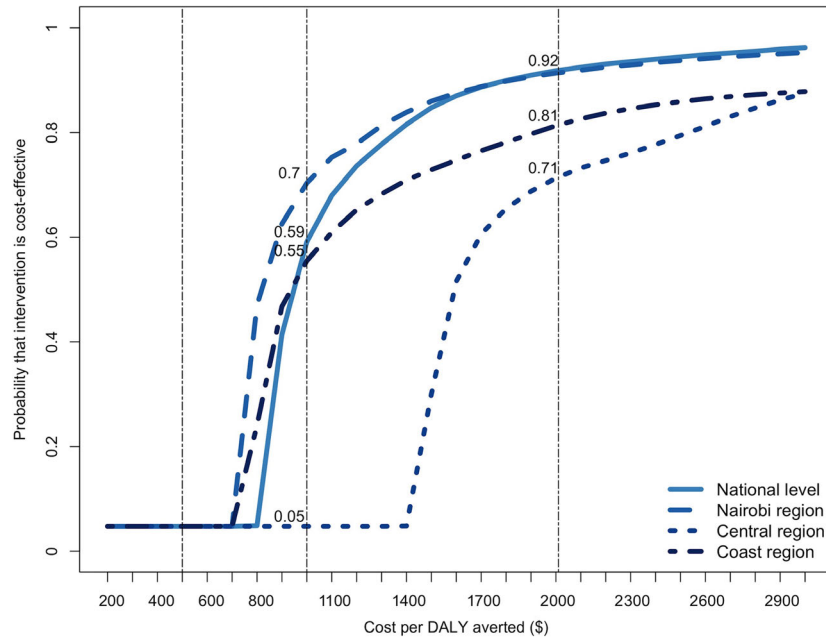


Figure 3. Cost-effectiveness acceptability curves for integrated HIV and NCD diagnosis and management in Kenya.

The x-axis shows the cost per disability-adjusted life year (DALY) averted by the intervention, and the y-axis shows the proportion of stochastic simulations falling below the corresponding cost-effectiveness threshold. Vertical lines represent alternative thresholds for evaluating cost-effectiveness at \$500, \$1000 and \$2000 (Kenya's 2019 per-capita gross domestic product). NCD, non-communicable diseases.

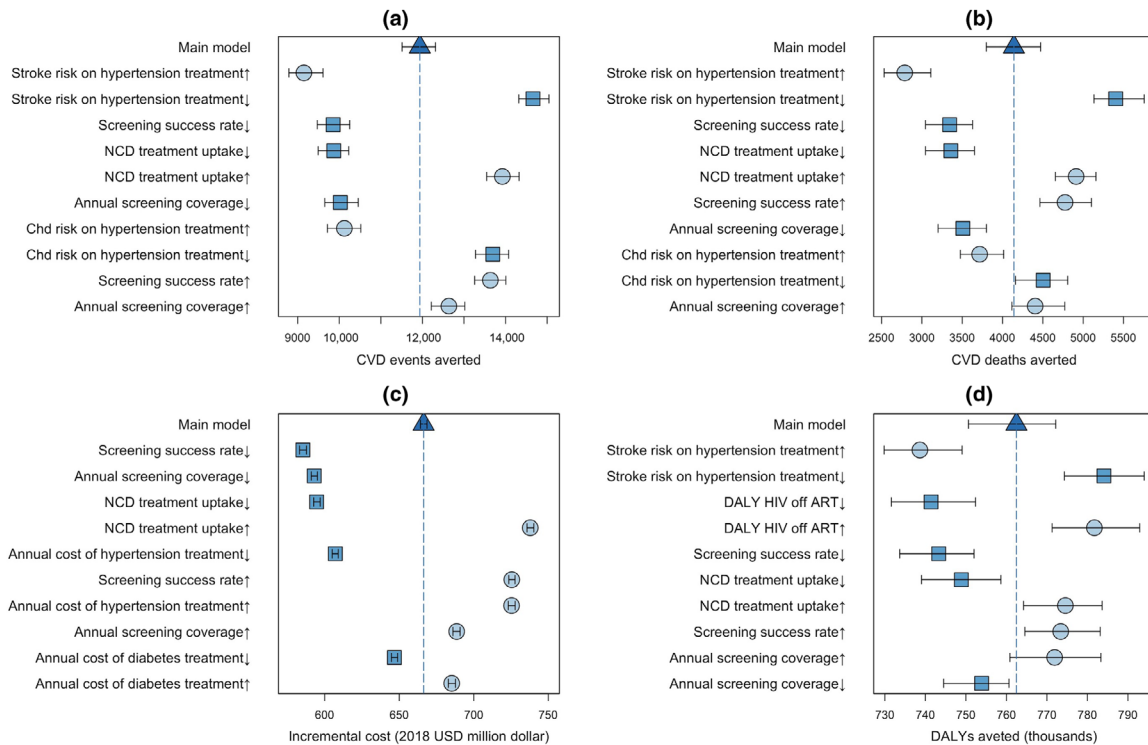


Figure 4. One-way sensitivity analysis to value of selected model parameters.

Panels show the sensitivity of epidemiological outputs, including the number of CVD events (panel A) and deaths (panel B) averted, and costing outcomes, including the incremental cost of intervention (panel C) and DALYs averted (panel D), under one-way variation in the value of selected model parameters. Each parameter value is followed by an up/down arrow, denoting a 15% increase (circle marks) or decrease (square marks) in the input parameter value as listed in Table 3. Each scenario is simulated starting in year 2019 and is followed to year 2033. The bars and arrows represent the median and interquartile ranges across 500 simulations. The triangle mark and dashed line represent the main model with no parameter variation. The results are summarized by showing the ten parameters for which variation resulted in the largest variations from the main model (decreasing impact from top to bottom. CVD, cardiovascular disease; NCD, non-communicable diseases; DALY, disability-adjusted life year; ART, antiretroviral therapy.

treatments [33], studies like ours are useful in advancing such national policies. Results from our modelling study in Kenya emphasize the critical need for an integrated approach to tackle the growing burden of HIV and NCDs over the next decade.

AUTHORS' AFFILIATIONS

¹Department of Epidemiology, The Johns Hopkins Bloomberg School of Public Health, Baltimore, MD, USA; ²Department of Health, Behavior and Society, The Johns Hopkins Bloomberg School of Public Health, Baltimore, MD, USA; ³Avenir Health, Glastonbury, CT, USA; ⁴Department of Cultures, Societies and Global Studies, Integrated Initiative for Global Health, Northeastern University, Boston, MA, USA; ⁵National AIDS Control Council, Nairobi, Kenya

COMPETING INTERESTS

The authors declare that they have no competing interests.

AUTHORS' CONTRIBUTIONS

PK, BW, DD and CB contributed to conception and design. PK, MS, CD, JP and YT contributed to model development. PK, MS, CD and YT contributed to analysis. PK, BW, RW, KM, DD and CB contributed to interpretation and important intellectual input. PK, MS and DD contributed to first draft of manuscript. PK, BW, MS, CD, JP, YT, RW, KM, DD and CB contributed to manuscript review and revision. All authors have read and approved the final manuscript.

ACKNOWLEDGEMENTS

The author thanks the National AIDS Control Council (NACC) for granting access to 2019 Kenya Spectrum models.

FUNDING

This article, as part of the *Integrating services for HIV and related comorbidities: modelling to inform policy and practice Supplement*, was supported by the US National Institutes of Health, Fogarty International Center. In addition, PK was supported through the National Institution of Allergy and Infectious Diseases of the National Institutes of Health under award number K01AI138853, and MS was supported by Desmond M. Tutu endowment at the Johns Hopkins Center for Public Health and Human Rights. The funders of this study had no role or influence in the study design, analysis, or interpretation of the data and in the writing of the manuscript.

REFERENCES

1. (UNIAIDS) JUNPoHA. UNIAIDS Data 2019. 2019 [cited 2020 Jan 5]. Available from: https://www.unaids.org/sites/default/files/media_asset/2019-UNAIDS-data_en.pdf
2. National AIDS Control Council. Kenya HIV Estimates Report 2018. 2018.
3. Phillips-Howard PA, Laserson KF, Amek N, Beynon CM, Angell SY, Khagayi S, et al. Deaths ascribed to non-communicable diseases among rural Kenyan adults are proportionately increasing: evidence from a health and demographic surveillance system, 2003–2010. *PLoS ONE*. 2014;9(11):e114010.
4. Wamai RG, Kengne AP, Levitt N. Non-communicable diseases surveillance: overview of magnitude and determinants in Kenya from STEPwise approach survey of 2015. *BMC Public Health*. 2018;18(S3):1224.
5. Havlir DV, Balzer LB, Charlebois ED, Clark TD, Kwarisiima D, Ayieko J, et al. HIV testing and treatment with the use of a community health approach in rural Africa. *N Engl J Med*. 2019;381(3):219–29.
6. Brown LB, Havlir DV, Ayieko J, Mwangwa F, Owaraganise A, Kwarisiima D, et al. High levels of retention in care with streamlined care and universal test and treat in East Africa. *AIDS*. 2016;30(18):2855–64.
7. Chang W, Chamie G, Mwai D, Clark TD, Thirumurthy H, Charlebois ED, et al. Implementation and operational research: cost and efficiency of a hybrid mobile multidisease testing approach with high HIV testing coverage in East Africa. *J Acquir Immune Defic Syndr*. 2016;73(3):e39–e45.
8. Kotwani P, Balzer L, Kwarisiima D, Clark TD, Kabami J, Byonanebye D, et al. Evaluating linkage to care for hypertension after community-based screening in rural Uganda. *Trop Med Int Health*. 2014;19(4):459–68.

9. Stover J, Brown T, Puckett R, Peerapatnapokin W. Updates to the Spectrum/Estimations and projections package model for estimating trends and current values for key HIV indicators. *AIDS*. 2017;31 Suppl 1:S5–S11.
10. Kenya stepwise survey for non communicable diseases risk factors 2015 report. 2015.
11. Subramanian S, Hilscher R, Gakunga R, Munoz B, Ogola E. Cost-effectiveness of risk stratified medication management for reducing premature cardiovascular mortality in Kenya. *PLoS ONE*. 2019;14:e0218256.
12. D'Agostino RB Sr, Vasan RS, Pencina MJ, Wolf PA, Cobain M, Massaro JM, et al. General cardiovascular risk profile for use in primary care: the Framingham Heart Study. *Circulation*. 2008;117(6):743–53.
13. D'Agostino RB, Wolf PA, Belanger AJ, Kannel WB. Stroke risk profile: adjustment for antihypertensive medication. The Framingham Study. *Stroke*. 1994;25(1):40–3.
14. Expert Panel on Detection E, Treatment of High Blood Cholesterol in A. Executive Summary of The Third Report of The National Cholesterol Education Program (NCEP) Expert Panel on Detection, Evaluation, And Treatment of High Blood Cholesterol In Adults (Adult Treatment Panel III). *JAMA* 2001;285(19):2486–97.
15. Chamie G, Kwarisiima D, Clark TD, Kabami J, Jain V, Geng E, et al. Leveraging rapid community-based HIV testing campaigns for non-communicable diseases in rural Uganda. *PLoS ONE*. 2012;7:e43400.
16. Kadede K, Ruel T, Kabami J, Ssemmondo E, Sang N, Kwarisiima D, et al. Increased adolescent HIV testing with a hybrid mobile strategy in Uganda and Kenya. *AIDS*. 2016;30(14):2121–6.
17. Chamie G, Kwarisiima D, Clark TD, Kabami J, Jain V, Geng E, et al. Uptake of community-based HIV testing during a multi-disease health campaign in rural Uganda. *PLoS ONE*. 2014;9:e84317.
18. Ettihad D, Emdin CA, Kiran A, Anderson SG, Callender T, Emberson J, et al. Blood pressure lowering for prevention of cardiovascular disease and death: a systematic review and meta-analysis. *Lancet*. 2016;387(10022):957–67.
19. Lamanna C, Monami M, Marchionni N, Mannucci E. Effect of metformin on cardiovascular events and mortality: a meta-analysis of randomized clinical trials. *Diabetes Obes Metab*. 2011;13(3):221–8.
20. Van de Vijver SJ, Oti SO, Agyemang C, Gomez GB, Kyobutungi C. Prevalence, awareness, treatment and control of hypertension among slum dwellers in Nairobi, Kenya. *J Hypertens*. 2013;31(5):1018–24.
21. Mohamed SF, Mwangi M, Mutua MK, Kibachio J, Hussein A, Ndegwa Z, et al. Prevalence and factors associated with pre-diabetes and diabetes mellitus in Kenya: results from a national survey. *BMC Public Health*. 2018;18(3):1215.
22. Mohamed SF, Mutua MK, Wamai R, Wekesah F, Haregu T, Juma P, et al. Prevalence, awareness, treatment and control of hypertension and their determinants: results from a national survey in Kenya. *BMC Public Health*. 2018;18(3):1219.
23. Perman G, Rossi E, Waisman GD, Agüero C, Gonzalez CD, Pallordet CL, et al. Cost-effectiveness of a hypertension management programme in an elderly population: a Markov model. *Cost Eff Resour Alloc*. 2011;9(1):4.
24. White AD, Folsom AR, Chambless LE, Sharret AR, Yang K, Conwill D, et al. Community surveillance of coronary heart disease in the Atherosclerosis Risk in Communities (ARIC) Study: methods and initial two years' experience. *J Clin Epidemiol*. 1996;49(2):223–33.
25. Nichol G, Thomas E, Callaway CW, Hedges J, Powell JL, Aufderheide TP, et al. Regional variation in out-of-hospital cardiac arrest incidence and outcome. *JAMA*. 2008;300(12):1423–31.
26. Ogeng'o JA, Olabu BO, Ong'era D, Sinkeet SR. Pattern of acute myocardial infarction in an African country. *Acta Cardiol*. 2010;65(6):613–8.
27. Capewell S, Murphy NF, MacIntyre K, Frame S, Stewart S, Chalmers JW, et al. Short-term and long-term outcomes in 133,429 emergency patients admitted with angina or myocardial infarction in Scotland, 1990–2000: population-based cohort study. *Heart*. 2006;92(11):1563–70.
28. Mudzi W, Stewart A, Musenge E. Case fatality of patients with stroke over a 12-month period post stroke. *S Afr Med J*. 2012;102(9):765–7.
29. Law MR, Watt HC, Wald NJ. The underlying risk of death after myocardial infarction in the absence of treatment. *Arch Intern Med*. 2002;162(21):2405–10.
30. Jokhadar M, Jacobsen SJ, Reeder GS, Weston SA, Roger VL. Sudden death and recurrent ischemic events after myocardial infarction in the community. *Am J Epidemiol*. 2004;159(11):1040–6.
31. Hemingway H, Shipley M, Britton A, Page M, Macfarlane P, Marmot M. Prognosis of angina with and without a diagnosis: 11 year follow up in the Whitehall II prospective cohort study. *BMJ*. 2003;327(7420):895.

32. Hardie K, Hankey GJ, Jamrozik K, Broadhurst RJ, Anderson C. Ten-year risk of first recurrent stroke and disability after first-ever stroke in the Perth Community Stroke Study. *Stroke*. 2004;35(3):731–5.
33. Subramanian S, Gakunga R, Kibachio J, Gathecha G, Edwards P, Ogola E, et al. Cost and affordability of non-communicable disease screening, diagnosis and treatment in Kenya: patient payments in the private and public sectors. *PLoS ONE*. 2018;13:e0190113.
34. Gaziano TA, Bertram M, Tollman SM, Hofman KJ. Hypertension education and adherence in South Africa: a cost-effectiveness analysis of community health workers. *BMC Public Health*. 2014;14:240.
35. Shade SB, Osmand T, Luo A, Aine R, Assurah E, Mwebaza B, et al. Costs of streamlined HIV care delivery in rural Ugandan and Kenyan clinics in the SEARCH Studys. *AIDS*. 2018;32(15):2179–88.
36. Institute for Health Metrics and Evaluation (IHME). Global Burden of Disease Study 2017 (GBD 2017) Disability-Adjusted Life Years and Healthy Life Expectancy 1990–2017. 2017.
37. Jain V, Chang W, Byonanebye DM, Owaraganise A, Twinomuhwezi E, Amanyiye G, et al. Estimated costs for delivery of HIV antiretroviral therapy to individuals with CD4+ T-Cell Counts >350 cells/uL in rural Uganda. *PLoS ONE*. 2015;10:e0143433.
38. International Monetary Fund (IMF). Report for Selected Countries and Subjects 2019 [cited 2020 Jan 5]. Available from: <https://www.imf.org/external/publications/weodata/weorept.aspx?pr.x=33&pr.y=15&sy=2017&ey=2021&scsm=1&ssd=1&sort=country&ds=.&br=1&c=664&s=NGDPD,PPPGDP,NGDPDPC,PPPPC,PCPIPCH&grp=0&a=>
39. Shillcutt SD, Walker DG, Goodman CA, Mills AJ. Cost effectiveness in low- and middle-income countries: a review of the debates surrounding decision rules. *Pharmacoeconomics*. 2009;27(11):903–17.
40. The Institute for Health Metrics and Evaluation (IHME). Flows of Global Health Financing 2019 [cited 2020 Jan 5]. Available from: <https://vizhub.healthdata.org/fgh/>
41. Achoki T, Miller-Petrie MK, Glenn SD, Kalra N, Lesego A, Gathecha GK, et al. Health disparities across the counties of Kenya and implications for policy makers, 1990–2016: a systematic analysis for the Global Burden of Disease Study 2016. *Lancet Glob Health*. 2019;7(1):e81–e95.
42. Sando D, Kintu A, Okello S, et al. Cost-effectiveness analysis of integrating screening and treatment of selected non-communicable diseases into HIV/AIDS treatment in Uganda. *J Int AIDS Soc*. 2020;23(S1):e25507.
43. Oyando R, Njoroge M, Nguhiu P, Kirui F, Mbui J, Sigilai A, et al. Patient costs of hypertension care in public health care facilities in Kenya. *Int J Health Plann Manage*. 2019;34(2):e1166–e78.
44. Osetinsky B, Mwangi A, Pastakia S, Wilson-Barthes M, Kimetto J, Rono K, et al. Layering and scaling-up chronic non-communicable disease care on existing HIV care systems and acute care settings in Kenya: a cost and budget impact analysis. *J Int AIDS Soc*. 2020;23(S1):e25496.
45. Bekker LG, Alleyne G, Baral S, Cepeda J, Daskalakis D, Dowdy D, et al. Advancing global health and strengthening the HIV response in the era of the sustainable development goals: the International AIDS society-lancet commission. *Lancet*. 2018;392(10144):312–58.
46. World Health Organization Using TRIPS flexibilities to improve access to HIV treatment. 2011.
47. Dugas LR, Forrester TE, Plange-Rhule J, Bovet P, Lambert EV, Durazo-Arvizu RA, et al. Cardiovascular risk status of Afro-origin populations across the spectrum of economic development: findings from the Modeling the Epidemiologic Transition Study. *BMC Public Health*. 2017;17(1):438.
48. Tishkoff SA, Williams SM. Genetic analysis of African populations: human evolution and complex disease. *Nat Rev Genet*. 2002;3(8):611–21.
49. Genomes Project C, Abecasis GR, Auton A, Brooks LD, DePristo MA, Durbin RM, et al. An integrated map of genetic variation from 1,092 human genomes. *Nature*. 2012;491(7422):56–65.
50. Bertram MY, Lauer JA, De Joncheere K, Edejer T, Hutubessy R, Kiemy MP, et al. Cost-effectiveness thresholds: pros and cons. *Bull World Health Organ*. 2016;94(12):925–30.
51. Tang S, Bishwajit G, Luba T, Yaya S. Prevalence of smoking among men in Ethiopia and Kenya: a cross-sectional study. *Int J Environ Res Public Health*. 2018;15(6):1232.
52. Onyango EM, Onyango BM. The Rise of noncommunicable diseases in Kenya: An examination of the time trends and contribution of the changes in diet and physical inactivity. *J Epidemiol Glob Health*. 2018;8(1–2):1–7.
53. Ngaruiya C, Abubakar H, Kiptui D, Kendagor A, Ntakuka MW, Nyakundi P, et al. Tobacco use and its determinants in the 2015 Kenya WHO STEPS survey. *BMC Public Health*. 2018;18:1223.
54. Mwenda V, Mwangi M, Nyanjau L, Gichu M, Kyobutungi C, Kibachio J. Dietary risk factors for non-communicable diseases in Kenya: findings of the STEPS survey, 2015. *BMC Public Health*. 2018;18:1218.
55. Cooper RS, Rotimi CN, Kaufman JS, Muna WF, Mensah GA. Hypertension treatment and control in sub-Saharan Africa: the epidemiological basis for policy. *BMJ*. 1998;316(7131):614–7.
56. Health NMo. Kenya Health Policy 2014–2030: Towards attaining the highest standards of Health. 2014.
57. Parliamentary Service Commission PBO. Eye on the 'Big Four'. 2018.
58. Were LPO, Were E, Wamai R, Hogan J, Galarraga O. Effects of social health insurance on access and utilization of obstetric health services: results from HIV+ pregnant women in Kenya. *BMC Public Health*. 2020;20(1):87.

SUPPORTING INFORMATION

Additional Supporting Information may be found in the online version of this article:

Data S1: Supporting information and additional results