



OPEN

DATA DESCRIPTOR

# Hourly rainfall data from rain gauge networks and weather radar up to 2020 across the Hawaiian Islands

Yu-Fen Huang<sup>1</sup>, Maxime Gayte<sup>1</sup>, Yinphan Tsang<sup>1</sup>✉, Ryan J. Longman<sup>2</sup>, Alison D. Nugent<sup>3</sup>, Kevin Kodama<sup>4</sup>, Mathew P. Lucas<sup>5</sup> & Thomas W. Giambelluca<sup>5,6</sup>

With increasing needs for understanding historic climatic events and assessing changes in extreme weather to support natural hazard planning and infrastructure design, it is vital to have an accurate long-term hourly rainfall dataset. In Hawai'i, annual, monthly, and daily gauge data have been well-compiled and are accessible. Here, we compiled hourly rainfall data from both gauges and radars. We arranged the metadata from various data sources, acquired data, and applied quality control to each gauge dataset. In addition, we compiled and provided hourly radar rainfall, and filtered out areas with low confidence (larger error). This paper provides (1) a summary of available hourly data from various observation networks, (2) 293-gauge rainfall data from their installation date to the end of 2020, and (3) a 5-year 0.005° by 0.005° (~250 × 250 m<sup>2</sup>) gridded radar rainfall dataset between 2016 and 2020 across the Hawaiian Islands.

## Background & Summary

Flood related studies (e.g., hydrological modelling, impacts on flood intensity under changing climate, heavy rainfall and flood warning, and flood mitigation planning) require high spatial and temporal resolution rainfall data. In Hawai'i, among all the natural hazards, flooding causes the most property damage and frequently threatens residents' lives<sup>1</sup>. Flash floods, in particular, can occur suddenly (<1 day) when a heavy rainfall event happens within a small watershed (<20 km<sup>2</sup>). Previous studies showed that using a limited number of rain gauges (e.g., two gauges) to simulate hydrological response produces unsatisfying results. This suggests that more measurements with high spatial resolution (<1 km) rainfall data provides improved depictions of hydrological response in Hawaiian watersheds<sup>2,3</sup>. In addition, with the growing focus on extreme weather driven by climate change, high temporal resolution (hourly or sub-hourly) rainfall data is becoming critical to study the intensity of rainfall and flooding. Hence, an hourly gridded rainfall dataset is essential in studying the impact of extreme weather in Hawai'i.

Current rainfall data in Hawai'i includes gauge rainfall products to the highest temporal resolution, daily, and radar hourly accumulated rainfall products to the finest spatial resolution, 0.24 × 1.5 km<sup>2</sup> with Hydrologic Rainfall Analysis Project (HRAP) grid. Previous efforts on gauge rainfall involves compiling and mapping annual<sup>4</sup>, monthly<sup>5-7</sup>, and daily<sup>8-10</sup> rainfall data. At the highest temporal resolution (daily) in the literature, Longman *et al.*<sup>9</sup> published a dataset of daily gauge rainfall between 1990 and 2014 across the Hawaiian Islands. Longman *et al.*<sup>8</sup> then extended their endeavors to map gridded daily rainfall. In addition to point rainfall measurement, weather radar (radar) (e.g., Next-Generation Radar, NEXRAD) provides high temporal-resolution with spatial information and is often used for flood modelling and forecasting in the contiguous United States (CONUS). There are four NEXRAD radars in Hawai'i, and public radar products include Level II<sup>11</sup> and Level III<sup>12</sup>. The level II data consists of base reflectivity, while the level III data contains processed products, including hourly precipitation.

The existing rainfall data in Hawai'i is insufficient or difficult to apply to flood related studies. At present, although hourly rainfall is measured by gauges, efforts are still required before applying rain gauge measurement

<sup>1</sup>Natural Resources and Environmental Management, University of Hawai'i at Mānoa, Honolulu, HI, USA. <sup>2</sup>East-West Center, Honolulu, HI, USA. <sup>3</sup>Department of Atmospheric Sciences, University of Hawai'i at Mānoa, Honolulu, HI, USA. <sup>4</sup>National Weather Service, Honolulu, HI, USA. <sup>5</sup>Water Resources Research Center, University of Hawai'i at Mānoa, Honolulu, HI, USA. <sup>6</sup>Department of Geography and Environment, University of Hawai'i at Mānoa, Honolulu, HI, USA. ✉e-mail: [tsangy@hawaii.edu](mailto:tsangy@hawaii.edu)

Network	Spatial-Extent	# of stations	Link to the network/project description
HIPPNET <sup>30</sup>	Hawai'i-only	8	Personal contact; HIPPNET: <a href="http://www.hippnet.hawaii.edu/">http://www.hippnet.hawaii.edu/</a>
Ua-Hydro Net	Hawai'i-only	82	Personal contact; Hydro Net: <a href="https://www.weather.gov/hfo/hydronet">https://www.weather.gov/hfo/hydronet</a>
UHM Lab	Hawai'i-only	39	Personal contact; Ecohydrology Lab: <a href="https://sites.google.com/a/hawaii.edu/ecohydrology_lab/">https://sites.google.com/a/hawaii.edu/ecohydrology_lab/</a> ; Tsang Stream Lab: <a href="https://tsangstreamlab.org/">https://tsangstreamlab.org/</a>
ASOS	National	13	<a href="https://www.faa.gov/air_traffic/weather/asos/">https://www.faa.gov/air_traffic/weather/asos/</a>
HADS	National	127	<a href="https://hads.ncep.noaa.gov/">https://hads.ncep.noaa.gov/</a>
NCEI ISD <sup>18</sup>	National	12	<a href="https://www.ncei.noaa.gov/products/land-based-station/integrated-surface-database">https://www.ncei.noaa.gov/products/land-based-station/integrated-surface-database</a>
NREL	National	1	<a href="https://midcdmz.nrel.gov/">https://midcdmz.nrel.gov/</a>
RAWS	National	54	<a href="https://raws.dri.edu/">https://raws.dri.edu/</a>
SCAN <sup>31</sup>	National	6	<a href="https://www.nrcs.usda.gov/wps/portal/wcc/home/aboutUs/monitoringPrograms/automatedSoilClimateMonitoring/">https://www.nrcs.usda.gov/wps/portal/wcc/home/aboutUs/monitoringPrograms/automatedSoilClimateMonitoring/</a>
USCRN	National	2	<a href="https://www.ncei.noaa.gov/products/land-based-station/us-climate-reference-network">https://www.ncei.noaa.gov/products/land-based-station/us-climate-reference-network</a>
USGS <sup>32</sup>	National	33	<a href="https://waterdata.usgs.gov/nwis">https://waterdata.usgs.gov/nwis</a>
COOPV2 <sup>14</sup>	International	67	<a href="https://www.ncei.noaa.gov/access/metadata/landing-page/bin/iso?id=gov.noaa.ncdc:C00988">https://www.ncei.noaa.gov/access/metadata/landing-page/bin/iso?id=gov.noaa.ncdc:C00988</a>

**Table 1.** Rainfall Networks in Hawai'i. Note that some stations are cross listed by several networks in the # of station. The network, UHM Lab, includes the Ecohydrology Laboratory and Tsang Stream Laboratory. The Ecohydrology Lab is led by Dr. Thomas Giambelluca and has multiple networks, i.e., HaleNet, Little HaleNet, HavoNet, and CraterNet. The Tsang Stream Lab is led by Dr. Yinphan Tsang and has one station at Lyon Arboretum.

to any study: (1) the stations distribute among different networks and data stewards, and some of them cannot be accessed online directly; and (2) a quality-controlled dataset of hourly rainfall does not exist in most the gauge networks. The challenges and drawbacks of applying NEXRAD Level III rainfall data to hydrological studies include: (1) the non-rectangular HRAP grid of the rainfall dataset cannot be used directly to most of hydrological models; (2) the finest spatial resolution of the rainfall product is still considered coarse at one dimension (>1 km); (3) the confidence of radar and its products' performance in Hawai'i are unknown; and (4) the parameters applied to the rain rate calculation are unclear. All of these hinder studies of radar rainfall in Hawai'i.

The goal of this paper is to describe the availability of hourly rainfall data in Hawai'i and provide: (1) rainfall data of 293 gauges from their installation date (the earliest, 1962) to 2020; and (2) a 0.005° by 0.005° (~250 × 250 m<sup>2</sup>) gridded radar rainfall dataset between 2016 and 2020 under a level of confidence. For hourly gauge rainfall, we acquired all the data, applied quality controls (QCs), and compiled the metadata. For radar rainfall, we produced the rainfall product by converting raw radar reflectivity into hourly rainfall using the Lidar Radar Open Software Environment (LROSE)<sup>13</sup>. The paper is organized as follows: Methods—rainfall networks, step-by-step method for gauge rainfall QC, and the process to derive radar rainfall; Data records—an overview of the data files and their formats; and Technical Validations—comparing hourly radar rainfall with hourly gauge rainfall and things to be concerned when using the data.

## Methods

**Rain gauge networks.** To compile a comprehensive Hawai'i-wide hourly rainfall dataset, we first identified and acquired data from all rain gauge networks. Based on the daily rain gauge networks between 1990 and 2014 in Longman *et al.*<sup>9</sup>, we extended the work to hourly rainfall data within all listed rain gauge networks and to the end of 2020. Additional networks and data repositories were explored and supplemented through this effort. The hourly rainfall data were assembled through several national and international online data repositories and networks (Table 1). For Hawai'i-only networks, data typically can only be obtained from project principal investigators (PIs) or data managers. Detailed information of nine out of 12 networks can be found in Longman *et al.*<sup>9</sup> under the section, Data Records, with one network, Ua-Hydro Net, updated from Hydro Net. Besides the updated Ua-Hydro Net, three additional networks were identified and added to the data compilation in this study:

1. Ua-Hydro Net  
The Ua-Hydro Net (“ua” means “rain” in Hawaiian language) includes Ua Net and Hydro Net, maintained by Pacific Region Headquarters of National Weather Service (NWS). The gauges in Hydro Net (see Longman *et al.*<sup>9</sup> for more detail) were gradually discontinued or converted to Ua Net beginning in mid-2015. Moreover, most of Ua Net data within the latest seven days can be retrieved from the Hydrometeorological Automated Data System (HADS).
2. Cooperative Observer Program Version 2  
The Cooperative Observer Program version 2 (COOPV2) has hourly gauge rainfall from 1940 to the present. These stations, nearly all of which were part of Hourly Precipitation Data (HPD) version 1 (a.k.a., DSI-3240), were gradually upgraded from paper punch tape data recording systems to a modern electronic data logger system from 2004–2013. Additionally, certain QCs have been applied to COOPV2 dataset<sup>14</sup>. Sixty-five stations recording rainfall data at 15-minute intervals were identified across the Hawaiian Islands in this network, with some of them co-located with Ua-Hydro Net stations. Data for these stations can be obtained through the National Centers for Environmental Information (NCEI) database (<https://www.ncei.noaa.gov/data/coop-hourly-precipitation/v2/access/>).

3. **Hydrometeorological Automated Data System**  
The Hydrometeorological Automated Data System (HADS) is a real-time data acquisition and data distribution system operated by the NWS. The HADS system acquires raw observations from Geostationary Operational Environmental Satellites (GOES) Data Collection Platforms (DCPs). Most of the data in Hawai'i acquired and processed by HADS come from the DCPs owned and/or operated by the NWS, Western Regional Climate Center (WRCC), Water Resources Division of the U.S. Geological Survey (USGS), and numerous local agencies and state departments of natural resources.
4. **National Centers for Environmental Information Integrated Surface Database**  
The NCEI Integrated Surface Database (ISD) is a global database that consists of hourly and synoptic surface observations compiled from numerous sources into a certain format and includes various meteorological parameters. Additionally, the ISD Lite, an advanced product of ISD, is a subset of the full ISD containing eight common surface parameters (air temperature, dew point temperature, sea level pressure, wind direction and wind speed, total cloud cover, hourly rainfall, and six-hour accumulated rainfall) in a fixed-width format free of duplicate values. Currently, there are 14 active NCEI ISD Lite stations updated daily in the NCEI ISD lite database for Hawai'i. Data can be obtained through the NCEI Data Access app (<https://www.ncei.noaa.gov/products/land-based-station/integrated-surface-database>).

**Radar networks.** To derive radar quantitative precipitation estimates (QPEs), we use the raw radar reflectivity from NEXRAD LEVEL II dataset<sup>11</sup> on Kaua'i (PHKI), Moloka'i (PHMO), and Hawai'i Island (PHKM and PHWA). Additionally, we also include radiosonde soundings on Kaua'i and Hawai'i Island for radar QPE. We downloaded the sounding data from the atmospheric sounding website hosted by the Department of Atmospheric Science, University of Wyoming (<http://weather.uwyo.edu/upperair/sounding.html>). We use the Shuttle Radar Topography Mission (SRTM) 30-m resolution digital elevation data from the NCASA space shuttle STS-99 mission<sup>15</sup> to calculate the beam blockage.

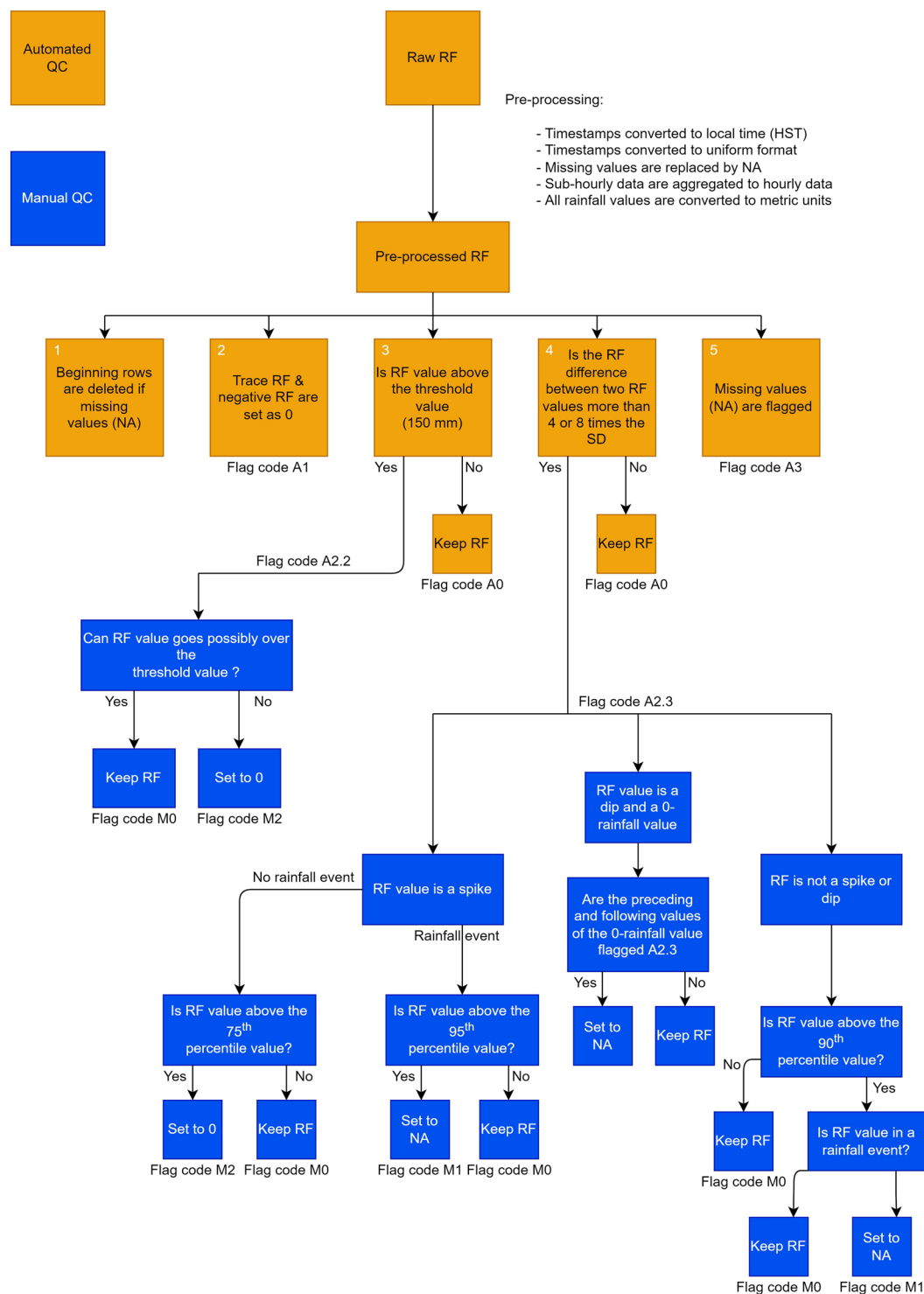
**Rain gauge data.** We applied Quality Assessment and Quality Control (QAQC) to ensure a level of data homogeneity. Raw rainfall data acquired from various sources are subject to different formats and a wide variety of potential errors. Different networks have their own data format, and errors can occur during the data management chain of collecting, processing, transferring, and storing<sup>16</sup>. The World Meteorological Organization (WMO) developed a set of procedures for rescuing and quality controlling data<sup>17</sup>. Before conducting any scientific analysis, rainfall data must undergo a strict set of QAQC procedures to minimize the proportion of errors in the data. The data provided here were screened through an automated and a manual QC process (Fig. 1). We summarized the WMO QC steps and the adapted QC steps in Table 2. In addition, we compiled metadata for all gauges including their coordinates, record period, sources, and flags for the gauges with potentially unreliable data. We updated the latest coordinates in the metadata if the gauge was relocated yet retained the same gauge ID to be consistent with the source agencies.

Prior to conducting QC, a set of pre-processing protocols are applied to 293 gauges (Fig. 2).

1. All time stamps are converted to local time (Hawaiian Standard Time (HST), UTC-10).
2. Time stamps are converted to uniform format.
3. Missing values are replaced by NA.
4. Accumulated rainfall is changed to rain rate.
5. Hourly rainfall is aggregated by rain rate.
6. All rainfall values are converted to metric units (e.g., millimeters).
7. All stations were plotted using Geographic Information System (GIS) software to verify land-based locations. When two (or more) stations were co-located between NCEI IDS, COOPV2, and Ua-Hydro Net, we checked to see if they are the same stations included in multiple networks based on the Historical Observing Metadata Repository from NCEI (<https://www.ncdc.noaa.gov/homr/>). Once the station is confirmed, rainfall records of different periods were combined into one file. When periods of records overlapped, the records of the Ua-Hydro Net were prioritized to be kept in the file.

There are three main processes in the QC procedure—automated QC, manual QC (Fig. 1), and consistency with neighbor gauges. Once a common format of records is established, the following set of automated QC is applied. During these two processes, “flag codes” were given to the values detected by the QC criteria. A description of the automated QC process is given below, and flag codes are listed in Table 3.

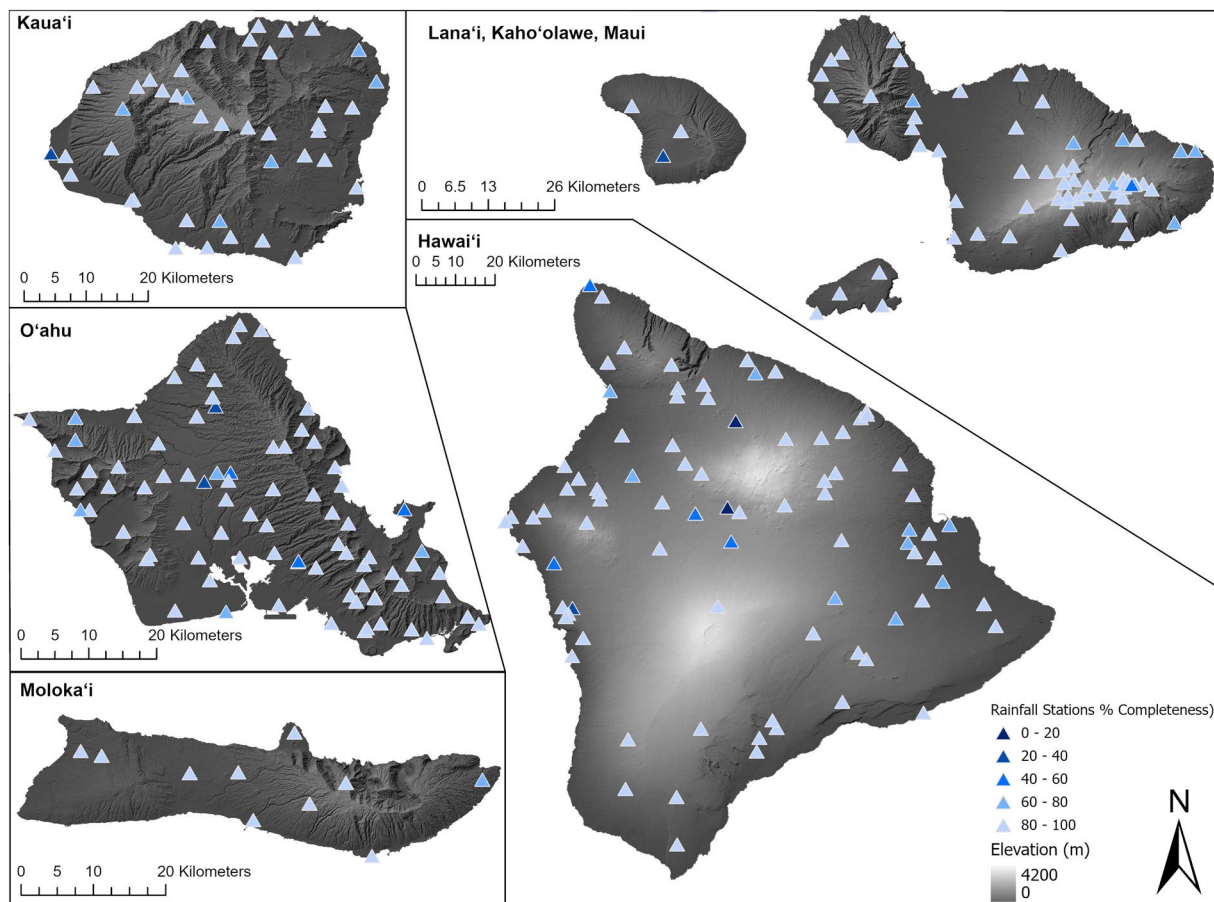
1. Identify the beginning of the records. Delete the missing values (NA) at the beginning of the records.
2. Trace precipitation ( $<0.254$  mm)<sup>18</sup> or negative rainfall are set to 0 and flagged as A1.
3. Threshold test, flagged as A2.2:
  - Rainfall values above 150 mm/hr<sup>17</sup> are flagged.
4. Variability test, flagged as A2.3:
  - If an hour before and after includes no missing values and the inspecting rainfall value varies more than eight times of standard deviation of gauge records (modified from WMO QAQC procedures<sup>17</sup>), the rainfall value is flagged.
  - If an hour before or/and after the inspecting value includes missing value(s), the missing value(s) are assumed to be 0. If the inspecting rainfall value varies more than four times of standard deviation of gauge records, the rainfall value is flagged.



**Fig. 1** The flowchart of the quality control process. Yellow boxes are the automated flagging workflow and blue boxes are the manual flagging workflow.

- Missing value (NA) flagged as A3.  
After each file goes through the automated QC (steps 1 to 5), a manual QC (steps 6 to 7) was conducted to investigate and determine if the flagged rainfall values should be accepted, corrected, or deleted. A detailed description of the manual flag codes is given in Table 4.
- Manual inspection of threshold flag A2.2:
  - If the rainfall value occurs in a very extreme event, according to the verified information from NWS and the climatology of gauge, we referred the rainfall amount to the surrounding gauges and the entire records of the gauge to confirm that the rainfall value could possibly go over the defined threshold of 150 mm/hr.





**Fig. 2** The location of the rain gauge and their completeness. Showing the locations of hourly rain gauges (triangles) and their completeness between the start-logging date of the gauge and December 31, 2020 (%; the color in triangles). The shaded of each island is the elevation (m).

Automated Flag code	Definition
A0	Original data
A1	Trace precipitation set to 0
A2.2	Failed threshold test; need manual check
A2.3	Failed variability test; need manual check
A3	Missing data

**Table 3.** Automated QC flag codes and their definitions.

Manual Flag Code	Definition
M0	Kept original data
M1	Replaced by NA
M2	Replaced by 0
(empty)	No manual actions were made

**Table 4.** Manual QC flag codes and their definitions.

types at each radar grid. After identifying particle types, we calculated the radar based QPE at the surface and applied the modified NCAR Hybrid method<sup>22</sup> with localized parameters<sup>23</sup> (Table 6) to calculate the precipitation rate at each grid point.

Prior to deriving the applicable precipitation rate at the surface, beam blockage was estimated at the lower elevation radar angles with the SRTM elevation data. The beam blockage algorithm considered standard atmospheric propagation effects and the convolution of the beam pattern with terrain features<sup>22</sup>. The algorithm produced a blocked fraction for each elevation angle. The beam blockage is crucial to derive QPE in Hawai'i because of the mountainous terrain. If it is blocked, then the remaining unblocked angle would be used for

Correlation Coefficient flag code (CORR_FLAG)	Definition
Not applicable	The flag is not applicable on the gauge because there is not enough data to compare between its data and its neighbor gauges' data.
Warning	The gauge needs to be used with caution because it has different daily rainfall pattern with its neighbor gauges.
Pass	The gauge is reliable because its data is consistent with its neighbor gauges' data.

**Table 5.** Correlation coefficient flag codes and their definitions.

Parameter	Value
$ZH_a$	0.01
$ZH_b$	0.83
dBZ	40
Kdp (deg/km)	0.3
Zdr	0.5

**Table 6.** Parameters and thresholds used in modified NCAR Hybrid method in Lidar Radar Open Software Environment (LROSE), where  $ZH_a$  and  $ZH_b$  are the coefficients of rain rate reflectivity relationship, dBZ is radar reflectivity, Kdp is specific differential phase, and Zdr is differential reflectivity. We applied the reflectivity-rain rate relationship,  $Z = 250R^{1.2}$ . Thus,  $rain\ rate = ZH_a \times reflectivity^{ZH_b}$ .

the precipitation estimation. The precipitation rate in polar coordinates at the surface then inherits the lowest elevation angles with the following criteria: (1) the signal to noise ratio (SNR)  $< 5$  dBZ; (2) beam blockage  $< 25\%$ ; (3) PID does not show clutter, insects or second trip; and (4) the precipitation rate is not missing at the grid. The surface precipitation rate is then converted into Cartesian coordinates. The QPE was estimated by computing precipitation depth from the rate at the original time interval and summing the precipitation depth over time for accumulation periods (in this study, hourly), and was then converted into Cartesian grids. Finally, the precipitation rates from individual radars (if multiple radars were included) were integrated by taking the maximum value.

**Validation of radar rainfall.** For this study we selected 18 severe rainfall events (Table 7) from the NCEI Storm Events Database (<https://www.ncdc.noaa.gov/stormevents/>). The events represent several different types of atmospheric disturbances across Hawaiian Islands including: three tropical cyclones, two cold fronts, seven upper-level troughs, two Kona lows, and four examples of mixing both Kona low and upper-level trough<sup>24–26</sup>. The hourly radar rainfall was validated with the quality-controlled gauge rainfall at each gauge location except for the gauges with correlation coefficients flagged as “Warning”. We defined the validation period of each event as low or no rainfall before and after the reported event time. For each event, the rain gauges for validating hourly radar rainfall must contain more than 80% of hourly rainfall records and the number of gauges can be slightly ( $< 10$ ) different. For each event, we applied four error matrices, including bias (BIAS), root mean square errors (RMSE), and their normalized values (nBIAS and nRMSE). BIAS indicates if radar rainfall is overall under- or over-estimated compared to the gauge rainfall, while RMSE quantifies the errors accumulated during the study periods and penalizes the larger error. To ensure that BIAS and RMSE are comparable among gauges and can be interpolated for creating masks of radar rainfall, the relative error matrices, nBIAS and nRMSE, were derived by dividing the range between event maximum and minimum rainfall of each gauge. In addition, we calculated the correlation coefficient (R) by combining all events. BIAS and RMSE indicate the accuracy at the gauges. nBIAS and nRMSE denote the spatial accuracy. The R value shows how well each gauge aligned with the radar estimate.

**Mask of radar rainfall.** To provide the gridded rainfall data with a level of confidence, we removed (masked out) areas with high uncertainties and bias by considering the high beam blockage areas, nBIAS, and nRMSE. Beam blockage is indicated by the higher beam blockage fraction or higher angle of the radar beam, which cause higher uncertainties and bias in reflectivity measurements. The beam blockage height is set for the lowest level that has the beam blockage fraction  $\leq 25\%$ . In addition, the nBIAS and nRMSE of radar rainfall against gauge rainfall were used to examine the confidence of radar measurement. Specifically, we examined the nBIAS and nRMSE of radar rainfall for the previously mentioned 18 weather events to ensure that the radar rainfall's bias and error are not due to the type of event selected in this process. We filtered out the outliers of event nBIAS and nRMSE when Z-score  $> 1$  within the events at each gauge location. We then interpolated event-averaged nBIAS and nRMSE at each gauge location with inverse distance weight. Next, we applied thresholds: 5% for the interpolated nRMSE (Fig. 3a); 3.5% for the interpolated nBIAS (Fig. 3b); and 2.0 km for the beam blockage height (Fig. 3c). Lastly, we combined the masks to create a final mask (Fig. 3d). The mask is then applied to the radar rainfall to remove it from areas with higher uncertainties/errors. The remaining, unmasked, radar rainfall data are more reliable and have a higher level of confidence.

Episode ID (Storm Events Database)	Types	Validation period
107196	Tropical cyclone	2016/07/22 → 2016/07/26
112867	Cold front	2017/02/09 → 2017/02/13
112880	Mix of Kona low and upper-level trough	2017/02/27 → 2017/03/02
120383	Mix of Kona low and upper-level trough	2017/10/22 → 2017/10/25
120841	Upper-level trough	2017/11/10 → 2017/11/13
122579	Mix of Kona low and upper-level trough	2018/02/16 → 2018/02/20
122592	Upper-level trough	2018/02/23 → 2018/02/27
123351	Upper-level trough	2018/03/30 → 2018/04/02
123655	Upper-level trough	2018/04/11 → 2018/04/16
129101 & 129126*	Tropical cyclone	2018/08/24 → 2018/08/29
130016	Tropical cyclone	2018/09/11 → 2018/09/15
131158	Upper-level trough	2018/10/10 → 2018/10/13
131163	Kona low	2018/10/28 → 2018/11/01
131895	Cold front	2018/11/08 → 2018/11/12
133682	Upper-level trough	2019/02/12 → 2019/02/16
137365	Kona low	2019/06/23 → 2019/06/27
141311	Mix of Kona low and upper-level trough	2019/09/12 → 2019/09/16
142475	Upper-level trough	2019/10/09 → 2019/10/13

**Table 7.** Eighteen severe storm events selected for validation. \*Note: The event has two episode IDs because the Storm Event Database separated the episodes by the heavy rain directly influenced by the TC and the indirect heavy rain when the TC moved away.

## Data Records

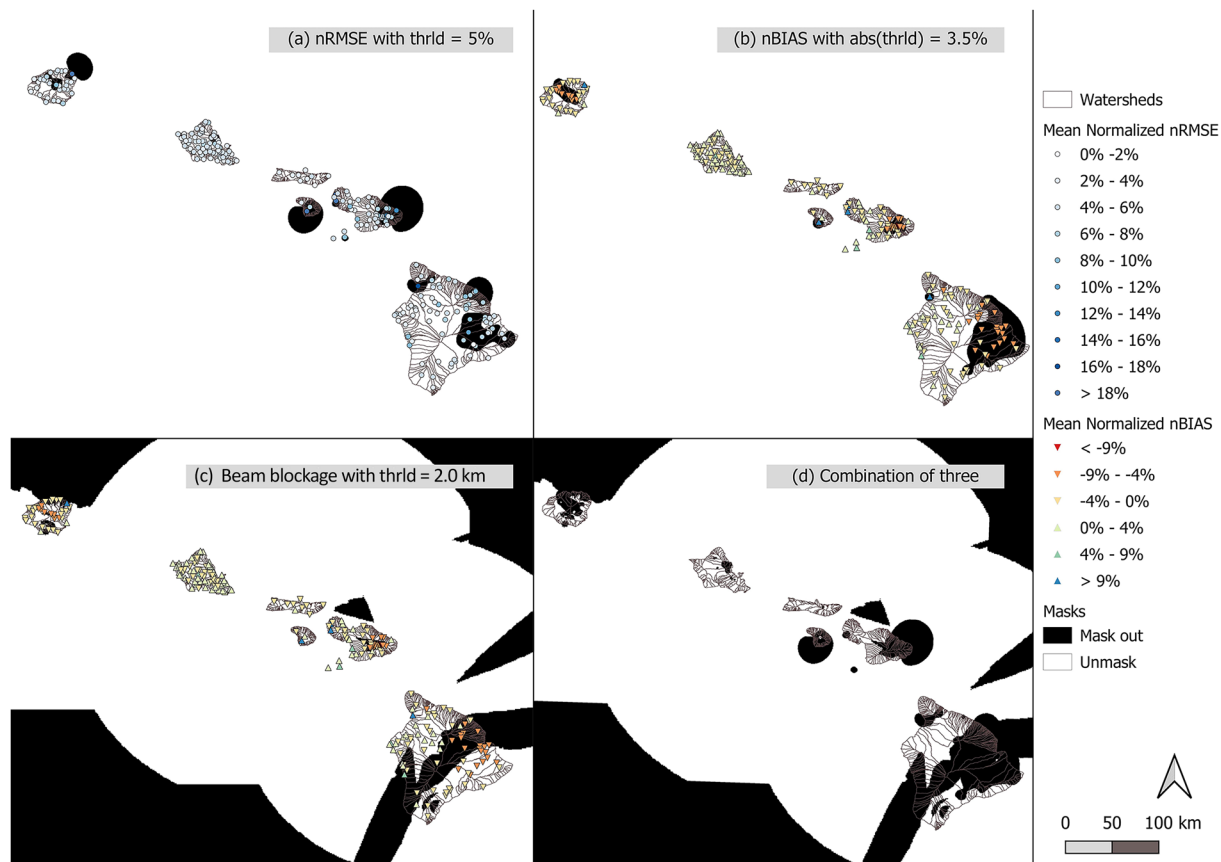
**Gauge rainfall.** This dataset includes one metadata CSV file describing gauge data and location information (Table 8) and 293 comma-separated value (CSV) files of hourly gauge rainfall<sup>27</sup>. The metadata has been compiled in metadata\_pub\_V20220401.csv. The filename of each gauge is {FILENAME}.csv (FILENAME in metadata). Each hourly gauge rainfall csv file includes five columns: DateTime; RF\_raw (raw hourly rainfall in millimeters); RF\_mm (quality-controlled hourly rainfall in millimeters); flag\_code\_auto (the automated QC flag code); and flag\_code\_manual (the manual QC flag code). Note that the value, NA, means no measurement or uncertain rainfall amount. The metadata includes station information such as station name, coordinates, start and end date, data sources, etc. Table 8 shows the definition and unit of each column name in the metadata. The COMPLETENESS is provided so that users can gain a quick understanding of the percentage of how many hours have rainfall value compared to the entire observation period of the gauge. The hourly rainfall data starts from the earliest station record of hourly rainfall data and ends in the end of 2020 (i.e., December 31, 2020). One can refer to the SOURCES in the metadata to access rainfall data beyond 2020. The metadata and data records of this study dataset can be downloaded from the figshare electronic repository<sup>27</sup>. It is in the plan that gauge metadata and rainfall data will be updated to the Hawai'i Climate Data Portal (<https://www.hawaii.edu/climate-data-portal/>) prepared by Mclean *et al.*<sup>28</sup> in the future.

**Radar rainfall.** The masked hourly radar rainfall (2016–2020) is also provided on the same repository in figshare with the Network Common Data Form (NetCDF)<sup>27</sup>. The filename is “Hourly\_radarRF\_{YYYYMM}\_masked.nc” (e.g., Hourly\_radarRF\_201601\_masked.nc for masked radar rainfall in January 2016). The masked hourly radar rainfall is stacked into 60 NetCDF monthly files with three dimensions—time (UTC), latitude (degree), and longitude (degree). Each grid is by 0.005 degree (~ 250 m). The radar rainfall values on the grid with no radar, missing hours, and masked areas were filled as NaN with the same spatial dimension. There are 465 hours missing (260 hours in 2016, 25 hours in 2017, 12 hours in 2018, 137 hours in 2019, 31 hours in 2020) over the total 43,848 hours, and the data is 98.94% complete.

## Technical Validations

All hourly gauge rainfall data provided in this study are quality controlled and the radar rainfall was validated for 18 rainfall events. Out of a total of 293 stations, 215 stations remained active after December 31, 2020. The earliest data can be traced back to 1962 at Honolulu International Airport (911820–22521). Two new stations were established in 2020 at Pāpa'ikou well (PPWH1) and Waimea tank (WMTH1). The completeness ranges from 2.29% to 100% with a mean value of 87.04% (Fig. 2). The neighbor gauge comparison allows us to identify gauges with potentially unreliable data<sup>29</sup>. This QC process resulted in 225 Pass, 56 Not Applicable, and 12 Warning in our collective dataset. It successfully flagged the gauges that have inconsistent records with neighbor records to alert potential long period errors. For example, the gauge, 911905–22524, has many trace rainfall and potentially incorrect zero values (e.g., zero values at the station, while high rainfall values at other neighbor gauges) in the raw data. For these reasons, we recommend excluding the gauges flagged as Warning, or being extra cautious when using the data of these gauges.



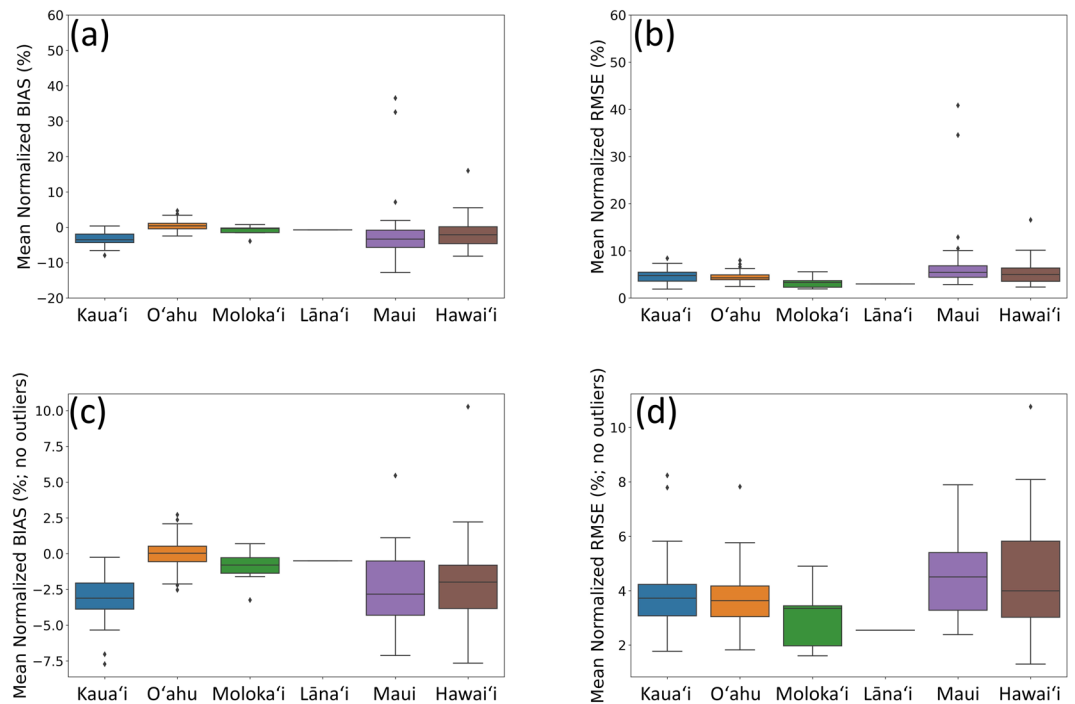


**Fig. 3** The masks for radar rainfall created by different indices. Showing the mask based on (a) normalized root mean square error (RMSE; circles) and its mask based on the threshold,  $\text{RMSE} > 5\%$  (black shaded); (b) normalized bias (BIAS; triangles) and its mask based on the threshold,  $|\text{BIAS}| > 3.5\%$  (black shaded); (c) normalized root mean square error (RMSE; circles) and the mask of beam blockage height at 2.0 km (black shaded); and (d) the mask that considered all threshold above (a–c; black shaded). Locations that are masked out do not have radar data provided.

Column Name	Definition
FILENAME	Name of the file for download
STATION_NAME	Name of the station
ISLAND	The island of the station
LAT	Latitude (°)
LON	Longitude (°)
ELEV_M	Station elevation (m)
DATE_START	Start date of the data
DATE_END	End date of the data
COMPLETENESS	Completeness of the data between the start date and December 31, 2020 (%)
SOURCES	The source(s) of downloading data
CORR_FLAG	The flag for the consistency with its nearest 3 gauges (see Rain gauge networks)

**Table 8.** Metadata column names and their definition.

When validating the mean BIAS, RMSE, nBIAS, nRMSE, and correlation coefficient over all gauges are  $-0.32$  mm,  $0.61$  mm,  $-1.30\%$ ,  $5.23\%$ , and  $0.60$ , respectively, before applying the mask. The hourly radar rainfall has better agreement with the hourly gauge rainfall on O‘ahu and Moloka‘i (Fig. 4). The radar rainfall often underestimates the rainfall on Kaua‘i, Maui, and Hawai‘i compared to gauge rainfall (Fig. 4). When validating the remaining radar data against 153 gauges, the final masked-out radar rainfall has an increased confidence with mean BIAS, RMSE, nBIAS, nRMSE, and CORR as  $-0.10$  mm,  $0.43$  mm,  $-0.14\%$ ,  $4.43\%$ , and  $0.67$ , respectively. The masked hourly radar rainfall has more confidence and reliability than the former unmasked data, thus, we provide the masked radar rainfall here.



**Fig. 4** The validation boxplots. Showing the boxplots of event-averaged (a) normalized bias (nBIAS), (b) normalized root mean square errors (nRMSE), (c) nBIAS without outliers ( $Z$ -score  $\leq 1$ ), and (d) nRMSE without outliers ( $Z$ -score  $\leq 1$ ) of unmasked radar rainfall at each gauge location by the islands ( $n = 31, 71, 9, 1, 53,$  and  $75$  for Kaua'i, O'ahu, Moloka'i, Lāna'i, Maui, Hawai'i, respectively).

### Code availability

The R version 4.0.2 along with the R packages, dataRetrieval (v2.7.6), lubridate (v1.7.9.2), dplyr (v1.0.2), and data.table (v1.13.6) are used to download and quality control hourly gauge rainfall data. We used the 2020<sup>17</sup> Lidar Radar Open Software Environment (LROSE) to derive hourly radar rainfall. The python version 3.7.10 along with the python packages, pandas (v1.3.5), numpy (v1.21.2), netCDF4 (v1.5.8), xarray (v0.19.0), and matplotlib (3.5.0) are used for the validation process.

Received: 25 January 2022; Accepted: 27 May 2022;

Published: 14 June 2022

### References

- Fletcher, C., Boyd, R., Neal, W. J. & Tice, V. *Living on the Shores of Hawaii: Natural Hazards, the Environment, and Our Communities*. (University of Hawai'i Press, 2010).
- El-Kadi, A. I. & Yamashita, E. Modeling streamflows and flood delineation of the 2004 flood disaster, Mānoa, O'ahu, Hawai'i. *Pacific Science* **61**, 235–255 (2007).
- Fares, A. *et al.* Rainfall-runoff modeling in a flashy tropical watershed using the distributed HL-RDHM model. *Journal of Hydrology* **519**, 3436–3447 (2014).
- Giambelluca, T. W. *et al.* Online Rainfall Atlas of Hawai'i. *Bull. Amer. Meteor. Soc.* **94**, 313–316 (2013).
- Frazier, A. G. & Giambelluca, T. W. Spatial trend analysis of Hawaiian Rainfall from 1920 to 2012. *International Journal of Climatology* <https://doi.org/10.1002/joc.4862> (2016).
- Frazier, A. G., Giambelluca, T. W., Diaz, H. F. & Needham, H. L. Comparison of geostatistical approaches to spatially interpolate month-year rainfall for the Hawaiian Islands. *International Journal of Climatology* **36**, 1459–1470 (2016).
- Lucas, M. P. *et al.* An automated kriging approach to spatially interpolate 30-years of monthly rainfall data in Hawai'i. *Journal of Hydrometeorology* **23**, 561–572, <https://doi.org/10.1175/JHM-D-21-0171.1> (2022).
- Longman, R. J. *et al.* High-resolution gridded daily rainfall and temperature for the Hawaiian Islands (1990–2014). *Journal of Hydrometeorology* **20**, 489–508 (2019).
- Longman, R. J. *et al.* Compilation of climate data from heterogeneous networks across the Hawaiian Islands. *Sci Data* **5**, 1–17 (2018).
- Newman, A. J. *et al.* Use of daily station observations to produce high-resolution gridded probabilistic precipitation and temperature time series for the Hawaiian Islands. *Journal of Hydrometeorology* **20**, 509–529 (2019).
- NOAA National Weather Service, Radar Operations Center. NOAA Next Generation Radar (NEXRAD) Level 2 Base Data <https://doi.org/10.7289/V5W9574V> (1991).
- NOAA National Centers for Environmental Information. NOAA Next Generation Radar (NEXRAD) Level 3 Products. <https://www.ncei.noaa.gov/access/metadata/landing-page/bin/iso?id=gov.noaa.ncdc:C00708>.
- Dixon, M. & Javornik, B. Lidar Radar Open Software Environment (LROSE) Core Software, <https://doi.org/10.5065/60HZ-RY38> (UCAR/NCAR - Earth Observing Laboratory, 2016).
- Lawrimore, J. H. *et al.* Quality control and processing of Cooperative Observer Program hourly precipitation data. *Journal of Hydrometeorology* **21**, 1811–1825 (2020).
- NASA JPL. NASA Shuttle Radar Topography Mission Global 30 arc second <https://doi.org/10.5067/MEASURES/SRTM/SRTMGL30.002> (2013).

16. Brunet, M. & Jones, P. Data rescue initiatives: bringing historical climate data into the 21st century. *Climate Research* **47**, 29–40 (2011).
17. World Meteorological Organization, World Meteorological Organization, & Organisation Météorologique Mondiale. Guide to Climatological Practices. (WMO, 2011).
18. NOAA National Centers for Environmental Information. Global Hourly - Integrated Surface Database (ISD). <http://www.ncei.noaa.gov/products/land-based-station/integrated-surface-database> (2001).
19. National Oceanic and Atmospheric Administration (NOAA). ERDDAP - satellite product TRMM PR 3G68 hourly. [http://apdr.csoest.hawaii.edu/erddap/griddap/hawaii\\_soest\\_2ee0\\_794e\\_6417.html](http://apdr.csoest.hawaii.edu/erddap/griddap/hawaii_soest_2ee0_794e_6417.html).
20. Dixon, M. & Wiener, G. TITAN: Thunderstorm identification, tracking, analysis, and nowcasting—a radar-based methodology. *Journal of Atmospheric and Oceanic Technology* **10**, 785–797 (1993).
21. Bell, M. M. *et al.* nsf-Irose/Irose-cyclone: Irose-cyclone release 20200110. <https://doi.org/10.5281/ZENODO.3604387> (Zenodo, 2020).
22. Dixon, M. J., Wilson, J., Weckwerth, T., Albo, D. & Thompson, E. A dual-polarization QPE method based on the NCAR Particle ID algorithm Description and preliminary results. In 37th Conference on Radar Meteorology (2015).
23. Birchard, T. R. Flash flood prediction in the tropical Pacific as an end-to-end forecast process, session 1.3. [https://www.comet.ucar.edu/outreach/abstract\\_final/9786992.htm](https://www.comet.ucar.edu/outreach/abstract_final/9786992.htm).
24. Kodama, K. & Barnes, G. M. Heavy rain events over the south-facing slopes of Hawaii: Attendant conditions. *Weather and Forecasting* **12**, 347–367 (1997).
25. Longman, R. J., Timm, O. E., Giambelluca, T. W. & Kaiser, L. A 20-year analysis of disturbance-driven rainfall on O‘ahu, Hawai‘i. *Monthly Weather Review* <https://doi.org/10.1175/MWR-D-20-0287.1> (2021).
26. Caruso, S. J. & Businger, S. Subtropical cyclogenesis over the central North Pacific. *Weather and Forecasting* **21**, 193–205 (2006).
27. Huang, Y.-F. *et al.* Hourly rainfall data from rain gauge networks and weather radar up to 2020 across the Hawaiian Islands, *figshare*, <https://doi.org/10.6084/m9.figshare.c.5779532.v1> (2022).
28. McLean, J. *et al.* Building a portal for climate data—Mapping automation, visualization, and dissemination. *Concurrency and Computation: Practice and Experience* <https://doi.org/10.1002/cpe.6727> (2021).
29. Lewis, E. *et al.* Quality control of a global hourly rainfall dataset. *Environmental Modelling & Software* **144**, 105169. <https://doi.org/10.1016/j.envsoft.2021.105169> (2021).
30. Hawaii Permanent Plot Network. Climatological Data Summaries. Retrieved from Ostertag, R., S. Cordell, T. Giambelluca, C. Giardina, C. Litton, M. Nullet, and L. Sack on January 15, 2015.
31. USDA Natural Resources Conservation Service. Soil Climate Analysis Network (SCAN). NRCS. <https://data.nal.usda.gov/dataset/soil-climate-analysis-network-scan>.
32. U.S. Geological Survey. National Water Information System data available on the World Wide Web (USGS Water Data for the Nation), accessed [May 10, 2021], at URL [<http://waterdata.usgs.gov/nwis/>] (2016).

## Acknowledgements

We thank Michael Nullet (Ecohydrology Lab in University of Hawai‘i at Mānoa) for retrieving and processing the rainfall data of the Ecohydrology Lab. We also thank Cody Ching and John Chang (Tsang Stream Lab) for assisting in the quality control process. Last but not the least, we thank Michael Dixon who helped us set up the Lidar Radar Open Software Environment (LROSE) and answered our questions about the software. The authors acknowledge support by the United States Department of Agriculture (USDA) National Institute of Food and Agriculture, McIntire Stennis project 1140 M, managed by the College of Tropical Agriculture and Human Resources, National Science Foundation (NSF) Office of International and Integrative Activities (IIA), RII Track-4: Building the Next Generation Meteo-Hydrological Model for Hawai‘i (OIA-1929155), and US Geological Survey, Pacific Island Climate Adaptation Science Center (G21AC10392).

## Author contributions

All authors reviewed and edited the data descriptor. Y.-F.H. led the project, set up the methods, collected and processed the radar data, ran the validation, and wrote the first draft of this data descriptor. M.G. collected gauge data, developed and led the QC process, created gauge metadata, and wrote the first draft of this data descriptor. Y.T., lead at Tsang Stream Lab, supervised and administrated the project, acquired funding, and conceptualized the method. R.L. was the consultant for the gauge data collection and metadata, and provided the metadata for daily rainfall. A.N. was the consultant for the radar data and provided the computational resources for radar rainfall. K.K. collected and processed the data. M.L. collected the data and assisted with gauge metadata. T.G., lead at Ecohydrology Lab, collected data.

## Competing interests

The authors declare no competing interests.

## Additional information

**Correspondence** and requests for materials should be addressed to Y.T.

**Reprints and permissions information** is available at [www.nature.com/reprints](http://www.nature.com/reprints).

**Publisher’s note** Springer Nature remains neutral with regard to jurisdictional claims in published maps and institutional affiliations.



**Open Access** This article is licensed under a Creative Commons Attribution 4.0 International License, which permits use, sharing, adaptation, distribution and reproduction in any medium or format, as long as you give appropriate credit to the original author(s) and the source, provide a link to the Creative Commons license, and indicate if changes were made. The images or other third party material in this article are included in the article’s Creative Commons license, unless indicated otherwise in a credit line to the material. If material is not included in the article’s Creative Commons license and your intended use is not permitted by statutory regulation or exceeds the permitted use, you will need to obtain permission directly from the copyright holder. To view a copy of this license, visit <http://creativecommons.org/licenses/by/4.0/>.

© The Author(s) 2022, corrected publication 2022