

RESEARCH ARTICLE

Pockets of progress amidst persistent racial disparities in low birthweight rates

Samantha S. Goldfarb^{1*}, Kelsey Houser¹, Brittany A. Wells², Joedrecka S. Brown Speights³, Les Beitsch^{1,4}, George Rust^{1,4}

1 Department of Behavioral Sciences and Social Medicine, College of Medicine, Florida State University, Tallahassee, FL, United States of America, **2** Department of Health Sciences, College of Health Professions and Sciences, University of Central Florida, Orlando, FL, United States of America, **3** Department of Family Medicine and Rural Health, College of Medicine, Florida State University, Tallahassee, FL, United States of America, **4** Center for Medicine and Public Health, College of Medicine, Florida State University, Tallahassee, FL, United States of America

* Samantha.goldfarb@med.fsu.edu



OPEN ACCESS

Citation: Goldfarb SS, Houser K, Wells BA, Brown Speights JS, Beitsch L, Rust G (2018) Pockets of progress amidst persistent racial disparities in low birthweight rates. PLoS ONE 13(7): e0201658. <https://doi.org/10.1371/journal.pone.0201658>

Editor: Sabine Rohrmann, University of Zurich, SWITZERLAND

Received: January 4, 2018

Accepted: July 19, 2018

Published: July 31, 2018

Copyright: © 2018 Goldfarb et al. This is an open access article distributed under the terms of the [Creative Commons Attribution License](https://creativecommons.org/licenses/by/4.0/), which permits unrestricted use, distribution, and reproduction in any medium, provided the original author and source are credited.

Data Availability Statement: This dataset was requested by the authors via application through the National Association for Public Health Statistics and Information Systems (NAPHSIS) available at <https://www.naphsis.org/programs/vital-statistics-data-research-request-process>. The authors did not have any special access privileges that others would not have. This dataset is the natality dataset with county identifiers (for counties with 100,000 or more population) and came de-identified before accessed by the authors. The publicly available natality data and documentation without county identifiers can be accessed at <http://www.nber.org/>

Abstract

Racial disparities persist in adverse perinatal outcomes such as preterm birth, low birthweight (LBW), and infant mortality across the U.S. Although pervasive, these disparities are not universal. Some communities have experienced significant improvements in black (or African American) birth outcomes, both in absolute rates and in rate ratios relative to whites. This study assessed county-level progress on trends in black and white LBW rates as an indicator of progress toward more equal birth outcomes for black infants. County-level LBW data were obtained from the 2003 to 2013 U.S. Natality files. Black LBW rates, black-white rate ratios and percent differences over time were calculated. Trend lines were first assessed for significant differences in slope (i.e., converging, diverging, or parallel trend lines). For counties with parallel trend lines, intercepts were tested for statistically significant differences (sustained equality vs. persistent disparities). To assess progress, black LBW rates were compared to white LBW rates, and the trend lines were tested for significant decline. Each county's progress toward black-white equality was ultimately categorized into five possible trend patterns (n = 408): (1) converging LBW rates with reductions in the black LBW rate (decreasing disparities, n = 4, 1%); (2) converging LBW rates due to worsening white LBW rates (n = 5, 1%); (3) diverging LBW rates (increasing disparities, n = 9, 2%); (4) parallel LBW rates (persistent disparities, n = 373, 91%); and (5) overlapping trend lines (sustained equality, n = 18, 4%). Only four counties demonstrated improvement toward equality with decreasing black LBW rates. There is significant county-level variation in progress toward racial equality in adverse birth outcomes such as low birthweight. Still, some communities are demonstrating that more equitable outcomes are possible. Further research is needed in these positive exemplar communities to identify what works in accelerating progress toward more equal birth outcomes.

[data/vital-statistics-nativity-data.html](https://doi.org/10.1371/journal.pone.0201658.s001). Data were deidentified before receipt by the authors, and this study was approved by the Florida State University Institutional Review Board.

Funding: The authors received no specific funding for this work.

Competing interests: The authors have declared that no competing interests exist.

Introduction

Worldwide, low birth weight contributes to 60–80% of all neonatal deaths [1] and is associated with a myriad of adverse outcomes, ranging from neonatal complications [2] to developmental delays [3] to sudden infant death syndrome [4]. Unfortunately, low birthweight (LBW) rates continue to be almost twice as high among African American (hereafter, black) infants compared to white infants (13.35% vs. 6.93%) [5].

One of the strongest predictors of infant mortality is LBW, a category which can include both premature babies and those who are small for gestational age. Infants who are LBW weigh 2,500 grams (5.5 pounds) or less at birth, while very low birthweight (VLBW) infants weigh 1,500 grams (3.25 pounds) or less at birth [6]. VLBW infants in particular are up to 110 times more likely to die within the first year of life than their normal birthweight counterparts [7], but the risks associated with VLBW are not a threshold phenomenon, and there is a continuum of risk across all levels of low birthweight for both immediate and long-term health and developmental issues [6]. Although there has been an 18% decline in IMR among black women from 2005–2013 [8], the VLBW rates have not made significant improvements over the past two decades [5]. The impact on racial infant mortality disparities is substantial, with VLBW accounting for nearly two-thirds of the black-white gap in IMR in the U.S. [9,10].

While much of the literature on perinatal outcomes reinforces the theme that racial disparities are pervasive and persistent, Fry-Johnson and colleagues have demonstrated that disparities in infant mortality are not inevitable and that there are counties with more equitable birth outcomes [11]. Recent studies have emphasized the impact of “place” on health outcomes, with local-level variation demonstrating both positive and negative deviance [12]. Kershenbaum et al demonstrated the wide variation that exists in premature birth rates across U.S. counties, and the tremendous variety of social and environmental “determinants” which combine in complex ways to explain this variation [13]. Similarly, Brown Speights and colleagues showed substantial state-level variation in progress toward the elimination of racial disparities in infant mortality [14]. Rossen et al described significant geographic variation in county-level infant mortality disparities as measured by both absolute rate differences and relative rate ratios [12]. This recent research suggests that there may be positive exemplars of counties demonstrating progress toward racial equality in health outcomes, which could inform new approaches to move communities from high-disparity patterns to optimal and equitable health outcomes.

Therefore, we conducted this study to assess trends in county-level black-white disparities in LBW rates, in order to identify counties with trend lines demonstrating progress toward more equitable outcomes. Positive progress at the county-level would be demonstrated by improvement in outcomes (i.e., decreasing rate of LBW births for both racial groups, especially black babies) with concomitant improvement in relative disparities (i.e., decreasing black-white rate ratios as demonstrated by black and white LBW rate trend lines converging toward more equal outcomes). Such positive progress in even a small proportion of counties would demonstrate the real possibility of eliminating racial disparities in LBW rates and achieving both optimal and equitable outcomes for all babies, regardless of race.

Materials and methods

County-level LBW data were obtained from the 2003 to 2013 U.S. natality files. Data were obtained with approval from the National Association for Public Health Statistics and Information Systems through the all-county data files for counties with populations of 100,000 or greater. After selecting counties with at least 10 LBW babies in each racial group by year to protect confidentiality, 408 counties from 50 states and the District of Columbia were eligible for study inclusion, with data restricted to live births for whom race was categorized as non-

Hispanic white or black. While this number represents only 13% of US counties, these counties include approximately 85% of all the black births in this country on average for each year included in the analysis. Data were deidentified before receipt by the authors, and this study was approved by the Florida State University Institutional Review Board.

In order to determine how disparities are changing over time, we modeled separately for each year the county-level incidence rate of LBW babies for all black births and all white births. We chose to model incidence rates as opposed to rate ratios because, while rate ratios can tell you *when* a county's rates are converging, they cannot tell you *how* a county's rates are converging. That is, they cannot distinguish between whether a county's rates are converging because the black rate is declining or because the white rate is increasing.

Racial disparity trend pattern categorizations

Based on the work of Rust et al [15,16], we initially categorized each county into 1 of 4 black-white LBW racial disparity trend patterns. These categories were:

- 1) Persistent disparities (black-white LBW rates roughly parallel but non-overlapping);
- 2) Sustained equality (black-white LBW rates essentially equal—trend lines overlapping throughout study period);
- 3) Convergent (black-white LBW rates converging towards equality in a statistically significant manner); and
- 4) Divergent (black-white LBW rates diverging to greater disparities in a statistically significant manner).

Analysis

Each county's black LBW rate and white LBW rate from 2003–2013 were calculated annually. These rates determined if, and to what extent, counties made progress towards equal (black LBW declining and converging towards equality) levels of LBW rates.

We conducted a log-linear model using OLS regression with race represented as a dummy variable for black rates, year included as a linear trend, and with each county modeled separately via a full set of county-specific dummies and corresponding county-specific interaction terms. This specification estimated the trend patterns for all counties by race across the 11-year study period. For this model, the county-specific time by race interaction served as the main independent variable, and the log of the low birthweight rate for each race was the dependent variable. The analysts generated the code for the analysis using SAS software, version 9.4. Based on the model results, counties were then categorized by trend pattern. A convergent trend pattern was identified when the estimated slope for the black rate was statistically significantly negative, the estimated slope for the white rate was statistically flat, and the difference between the two rates (the coefficient on the interaction term) was statistically significantly negative. A divergent trend pattern was identified when the estimated slope for the black rate was flat or statistically significantly positive, the estimated slope for the white rate was statistically significantly negative or flat, and the difference between the two rates was statistically significantly positive. Sustained equality and persistent disparity were identified when the difference between the two rates was statistically indistinguishable, with sustained equality determined when the difference between the intercepts was not statistically significant and persistent disparity determined when the difference in intercepts was statistically significant and positive for the black rate. Recent discussions on multiple hypothesis testing have emphasized the need to adjust *p*-value thresholds to

reduce the probability of a Type I error. Accordingly, all hypothesis tests were two-tailed and conducted at the 0.005 level [17].

After these classifications were made, more detailed information (population size, percent changes in black-white LBW rates and rate ratios) was compiled for counties demonstrating positive progress with convergent trend patterns and concomitant reductions in black LBW rates. A graph of aggregated data for all counties in this trend pattern category based on the black and white LBW rates from 2003 to 2013 was also produced. This graph provides a visual representation of the convergence trend to better understand the counties that are achieving progress towards equality in black and white LBW rates.

We also projected the total potential number of low birthweight births averted if we had eliminated the gap in black-white LBW rates in all included counties during the study period. This was conducted by setting the white LBW rate as a function of the black total births and LBW births per year per county for a cumulative total. That is, for each year and county, the following calculation was made: Potential averted black LBW births = Total number black LBW births – (white LBW rate/100 * Total number of black births).

Results

Table 1 depicts U.S. counties categorized according to their racial disparity trend pattern. Overall, 1% of counties demonstrated black-white convergence with reductions in black LBW rates, 1% also demonstrated convergence primarily due to worsening white LBW rates over time, 2% were divergent, 4% demonstrated sustained equality, and 91% were persistently unequal. Therefore, the most common trend pattern was parallel and persistently unequal black and white trend lines. Those counties with sustained equality mostly demonstrated persistent gaps between black and white LBW rates, but their trend lines were not statistically significant different. However, one exemplar county that stood out in this category was Middlesex County, Massachusetts, which demonstrated low LBW rates among both black and white infants throughout the entire study period (mean 5.7% and 4.6%, respectively).

Table 2 depicts U.S. counties with convergent racial disparity trend lines with declining black LBW rates from 2003 to 2013. Overall, these converging counties have demonstrated substantial reductions in LBW disparities as measured by black-white rate ratios. These four counties include Craighead County, AR; Black Hawk County, IA; Delaware County, IN; and Stearns County, MN. Among those counties, percent changes in white LBW rates ranged from a 33% increase to an 8% decrease, while percent changes in black LBW rates ranged from a

Table 1. U.S. counties categorized by black/white racial disparity patterns for low birthweight from 2003 to 2013 (N = 408).

Region	Description	# of Counties	% of Total
Convergence with reductions in black LBW and no increase in white LBW rate	Rates converging due to decrease in BLBW rates and flat WLBW rates	4	1%
Convergence due to increase in white LBW rate	Rates converging due to 1) decreasing BLBW rates <i>and</i> increasing WLBW rates <u>OR</u> 2) flat BLBW rates and increasing WLBW rates	5	1%
Sustained Equality	BLBW and WLBW rates not statistically different over time	18	4%
Persistent Inequality	BLBW and WLBW rates remain statistically different over time (but may be concurrently increasing, flat, or decreasing)	373	91%
Divergence	Rates diverging due to 1) increasing/flat BLBW rates while WLBW flat/decreasing	8	2%
Total		408	100%

BLBW = Black Low Birthweight
WLBW = White Low Birthweight

<https://doi.org/10.1371/journal.pone.0201658.t001>

Table 2. U.S. Counties with racial disparity trend lines converging with no increase in white LBW from 2003 to 2013.

County, State	Year	LBW, white	% Change*	LBW, black	% Change*	Black-White Rate Ratio	% Change^	Total Population
Craighead County, Arkansas	2003	4.2	33.3	10.5	-62.9	2.5	-120.0	84,953
	2013	5.6		3.9		0.7		101,678
Black Hawk County, Iowa	2003	5.0	-2.0	17.8	-57.9	3.6	-80.8	126,026
	2013	4.9		7.5		1.5		132,716
Delaware County, Indiana	2003	7.7	26.0	13.7	-9.5	1.8	-62.5	552,355
	2013	9.7		12.4		1.3		561,619
Stearns County, Minnesota	2003	7.8	-7.7	11.2	-15.2	1.4	-25.0	140,307
	2013	7.2		9.5		1.3		152,165
National Average	2003	7.0	0.0	13.4	-4.5	1.9	-11.1	~290,100,000
	2013	7.0		12.8		1.8		~316,200,000

*% change LBW rates calculated as (2013 rate– 2003 rate)/2003 rate * 100

^% change Rate Ratio calculated as (2013 rate ratio– 2003 rate ratio)/(2003 rate ratio – 1) * 100

<https://doi.org/10.1371/journal.pone.0201658.t002>

10% to a 63% decrease. Nationally, the rates for black LBW declined slightly over time and remained unchanged for white LBW.

Fig 1 depicts the aggregated LBW rate trend by race for counties in the convergent trend pattern identified above. As depicted in Fig 1, convergent counties overall demonstrate a reduction in black LBW rates over time, with little to no change in white LBW rates.

Additionally, the potential number of LBW births averted for all counties during the study period were black-white LBW rates to be equal was calculated to be 371,176. According to the most conservative estimate, an average LBW hospitalization stay in 2001 was estimated at \$15,100. If we applied this to the study period, \$5,604,757,600 in immediate hospitalization costs could have been avoided had black-white equality in LBW rates been achieved [18,19]. It is important to note that this estimate is extremely conservative as it does not adjust for inflation (estimated at \$22,953.76 in 2012), it does not account for those LBW births that are VLBW (estimated in 2001 at \$52,300-\$65,600), and it does not account for the other direct and indirect costs associated with LBW births [18,19].

Discussion

The purpose of this study was to better understand county-level black-white disparities in LBW rates, with the goal of identifying counties demonstrating progress toward equal outcomes. Our main finding is that not only is there significant U.S. county-level variation in both black and white LBW rates, but that there is also evidence of meaningful progress in specific counties.

The slow progress in achieving reductions in racial disparities in LBW rates has already been well documented at a national level, but the local-area variation provides a more nuanced picture. The four counties moving toward equitable outcomes reinforce the growing body of evidence that racial disparities in health outcomes are not inevitable [14,20]. From 2003 to 2013, these counties have demonstrated a converging pattern, moving from substantial racial disparities to closing the gap towards equality, with black LBW rates declining to meet white LBW rates. Convergence occurred in five additional counties because white LBW rates worsened, even as black LBW rates showed variable improvement. Additionally, 18 counties showed a pattern of sustained equality (overlapping black-white trend lines). The pattern of persistent disparities (parallel black and white trend lines) was most common (n = 373; 91%),

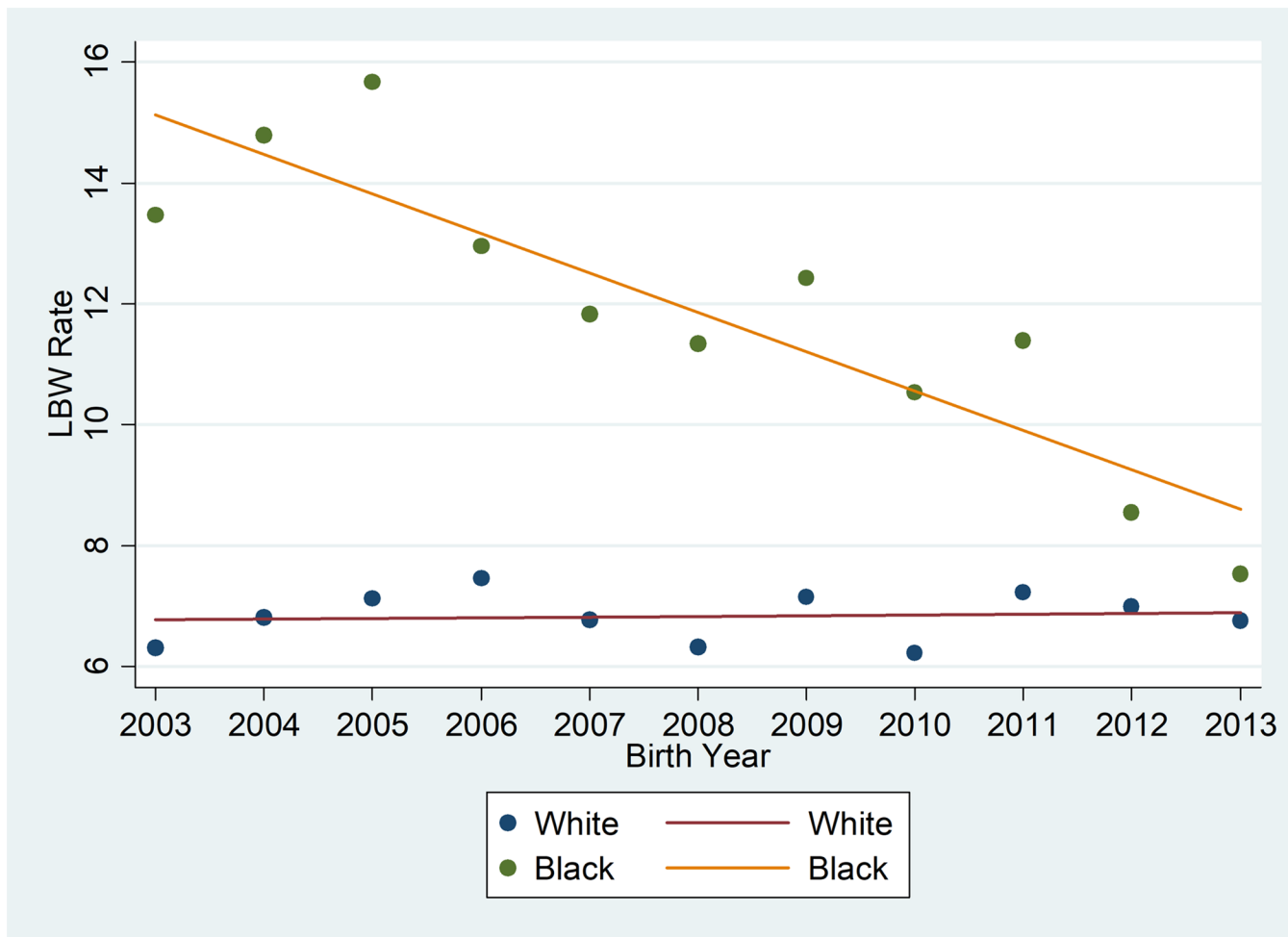


Fig 1. Aggregated LBW rates for U.S. counties with convergent racial disparity trend pattern (reductions in black LBW and no increase in white LBW) from 2003 to 2013.

<https://doi.org/10.1371/journal.pone.0201658.g001>

although eight counties showed diverging trend lines (disparities worsening). These findings underscore the importance of measuring health equity by examining both relative disparities and absolute disparities as study outcomes.

We chose to examine all categories of LBW infants given their increased vulnerability for poor short- and long-term health outcomes, across a continuum of risk from extreme VLBW to mild LBW. While VLBW births are especially important given their correlation with infant mortality rates, especially in the black population, they are a subset of the larger problem of LBW births [19]. Interventions to decrease LBW birth broadly will directly impact the more severe adverse outcomes of VLBW and infant mortality [21].

Previous literature suggests that different risk factors and stressors may be associated with LBW outcomes in different racial groups. Black women who had a LBW infant were more likely to be of low socioeconomic status than white women, despite also being more likely to be in good health [22]. However, even among black and white women who receive adequate prenatal care and have a college education, black women historically experienced a LBW rate that was more than twofold higher than white women [23].

Across racial groups, neighborhood-level social determinants and individual psychosocial stressors can be difficult to tease apart as risk factors for LBW or very preterm birth. Data from the Early Childhood Longitudinal Study Birth Cohort linked to county-level neighborhood disadvantage index demonstrated that across all neighborhood strata, but especially within the most disadvantaged neighborhoods, LBW risk was exacerbated by the experience of stressful life events before conception [24]. El-Sayed et al found that socioeconomic position, maternal behaviors, demographics, and health access explained nearly a third of racial disparities in various causes of mortality in Michigan [25].

Chronic stress has been shown to be notably higher in the daily lived experiences of black women compared to whites [26,27], and stress perpetuated by racial discrimination can also have adverse biopsychosocial effects on both mother and infant [26]. A more sophisticated understanding of the interactive effects of racism on poor birth outcomes for black women over the life course also needs further consideration [28]. Studies in Newcastle, England showed that socioeconomic inequalities did not narrow over forty years (1961–2000), and indeed widened for preterm birth [29]. This is consistent with a review by Collins, et al and posited by Geronimus, regarding the effects of intergenerational minority status across the course of life for black women and the weathering impact of stress on maternal and child health outcomes [26,30]. Indeed, African American women experiencing interpersonal racism in 3 or more domains were 2.6 times more likely than white women to deliver a VLBW baby, even after controlling for other associated factors [31].

Although childhood poverty may have long-lasting and even epigenetic effects on women as they enter childbearing years, data on 2,463 women from 52 clinics in five Michigan communities suggests that upward mobility (moving from low-SES to middle or upper-class SES) could be significantly protective of fetal growth, as measured by the birth outcome of small for gestational age [32]. Upward economic mobility of black women is associated with decreased risk of preterm birth, unless the women were LBW themselves [30].

Structural equation modeling of preconception processes influencing birthweight using data from 1,580 mother-daughter pairs in National Longitudinal Survey of Youth found that birthweight was shaped not only by factors in women's early background (especially education), but also by conditions dating back as much as three generations [33]. Two other studies have found race-specific intergenerational effects, with black mothers who themselves were born low birthweight or preterm being more likely to bear LBW infants, but white mothers born LBW or preterm had no increased risk of bearing an LBW infant [34,35].

Data on 3,869 women from the 1998–2000 Fragile Families and Child Wellbeing Study showed significant associations between known social and behavioral stressors (use of public assistance or public housing, smoking, drug use, and certain religious affiliations) and low birthweight, but did not fully explain the racial disparities in LBW [36]. Analysis of fetoinfant mortality data (FIMR) in St. Louis from 2000 to 2009 found that VLBW contributed 50% of the excess FIMR countywide. Among those with VLBW, black maternal race was the strongest risk factor (40.6% of attributable risk), followed by inadequate prenatal care (19.8%) and gestational hypertension (12.0%). Medicaid coverage was protective against the adverse birth outcome of VLBW (population attributable risk = -14.5) [37].

Geographically granular analysis at the census tract and neighborhood levels in New York City found a positive association between residential segregation and low birthweight, after controlling for individual-level risk factors and neighborhood poverty [38]. Residential segregation also explained neighborhood variation in low birthweight rates and racial disparities across census tracts, which were not explained by neighborhood poverty alone [38].

Seeking to tease out the differential effects of individual and neighborhood-level factors, Vang and Elo examined the association between neighborhood minority diversity and infant

birthweight, among black non-Hispanic women stratified by country of birth (U.S. born vs. foreign born). Black women born in Africa or the Caribbean had significantly higher birthweights than did U.S.-born black women, even after controlling for neighborhood deprivation, residential instability, individual-level sociodemographics, maternal health behaviors, and gestational age. Neighborhood non-white racial-ethnic diversity (minority heterogeneity) at the census tract level had a positive association with higher black infant birthweights, as did living in a majority-minority neighborhood [39]. Moving beyond risk factors and negative determinants, identifying communities with positive outcomes may help chart a path toward perinatal health equity. Kershenbaum et al found counties with paradoxically low preterm birth rates, even after controlling for social and environmental “determinants” [13]. Further research is needed to understand what enables these counties to achieve more optimal and equitable perinatal outcomes, and what explains the “residual effects” or unmeasured factors that make them outliers (positive deviants).

The trend of increasing LBW rates among white mothers in some counties also merits attention. Factors driving increases in white LBW rates in pockets of the country might include the impact of the economic downturn, increasing rates of opioid use and addiction, variable access to prenatal care, variation in smoking rates (including youth adoption of e-cigarettes), and other biopsychosocial stressors. Further study is needed to understand specific drivers of increasing white LBW rates in these counties.

Interventions to decrease prematurity and LBW births could be both obstetrical and social-contextual. For example, one survey at the hospital level demonstrated that LBW infants born in high-black (patient-mix) hospitals had more severe levels of nurse understaffing and higher rates of infection and infant discharge without breast milk than low-black hospitals [40]. Reducing elective deliveries and C-sections is also an important target of intervention at the provider and hospital level [41,42]. Structural factors, including state-level health policies, can also impact racial disparities in birth outcomes. For example, state funding levels for family planning and abortion have been found to be associated with reductions in infant mortality, even controlling for race and county-level covariates [43]. Smoking legislation, such as increasing cigarette taxes, can affect prenatal smoking, a major risk factor for low birthweight and adverse perinatal outcomes [44,45]. The establishment of a state Office of Minority Health has also been shown to impact racial disparities in birth outcomes, especially in states with low Medicaid funding levels [46].

Interventions to improve these birth outcomes, especially in minority communities, often focus only on a single risk factor, even when evidence strongly suggests multifactorial etiologies. For example, pilot studies demonstrate the ability to increase maternal knowledge about health literacy and preterm birth but show no proven impact on birth outcomes [47]. Specific interventions such as state Medicaid-sponsored enhanced prenatal care with targeted home visits by nurses can address multiple factors and may have more direct impact on outcomes [48]. Group prenatal care visits (centering) are showing early promise in not only improving birth outcomes but reducing the racial disparity in preterm birth for black and white women [49]. Other targets for potential intervention include food security, elimination of environmental hazards, smoking cessation, the promotion of breastfeeding, and undoing racism [50,51].

A growing number of multi-dimensional, place-based efforts to address racism are emerging and may further illuminate the paths by which communities may achieve maternal-child health equity [52]. For example, the “Best Babies Zone” being implemented in three urban neighborhoods utilizes “resident-driven strategies for decreasing the root causes of toxic stress and poor birth outcomes” by “aligning resources, building community leadership, and transforming educational opportunities, economic development, and community systems in concentrated neighborhoods” [53].

Additionally, further research is needed on formal and informal policies impacting health systems and community-level factors that improve care and support of women before, during, and after conception, as well as the broader upstream social and economic context and built environment in which people live [54].

Limitations

This study is subject to all the known limitations of vital statistics data and, specifically, the designation of race and ethnicity on birth certificates. The lack of inclusion of paternal race-ethnicity is another relevant factor emphasized by Fulda et al [55]. Our study is also limited by the geographic constraints of using county-level data [56]. There is a clear tension between inclusion of more counties and the need to maintain confidentiality and to have sufficient births to achieve some stability of rates at the local-area level. In future work addressing the social context of birth outcomes, assessment of county LBW may be less useful in larger population counties. Analysis at a more granular level, i.e., census tract, without compromising stability, could gain more meaningful insights into neighborhood-level causes of convergence. Within counties or even cities, GIS techniques such as kernel density estimation can demonstrate hot-spots in which more than 20% of births have either premature delivery or low birthweight, helping to focus programmatic interventions even more specifically than can aggregations of data at the county, neighborhood, or even census tract level [57]. Determining local area variation among outcomes, such as preterm birth, are also worthy of study. However, the authors chose to focus on birth weight given its consistent measurement during the study period. Further research will be needed to better understand why some communities are achieving greater progress toward lowering LBW rates and reducing the black-white gap.

Conclusions

LBW is a significant driver of the black-white gap in birth outcomes and in the resultant impact on child health and development over the life course. It is thus an appropriate target for achieving greater racial equality in birth outcomes. Progress has been slow at the national level. Local-area variation, and especially the ability of some counties to make progress in reducing black LBW rates and the black-white disparity, suggests that there are paths for other counties to follow in achieving more optimal and equitable birth outcomes for everyone. Further research is needed to understand what is working in positive exemplar counties and to test multi-dimensional interventions for improving birth outcome equity in high-disparity locales.

Acknowledgments

The authors would like to acknowledge Dr. Jessica DeLeon, of the Florida State University College of Medicine, Department of Medicine and Rural Health for her contributions to editing the final draft of this manuscript. They also wish to acknowledge Dr. Celeste Philip, Surgeon General and Secretary of the Florida Department of Health, for her contributions and edits to the manuscript.

Author Contributions

Conceptualization: Samantha S. Goldfarb, Kelsey Houser, Brittney A. Wells, Joedrecka S. Brown Speights, Les Beitsch, George Rust.

Data curation: Samantha S. Goldfarb, Kelsey Houser.

Formal analysis: Samantha S. Goldfarb, Kelsey Houser.

Investigation: Samantha S. Goldfarb, Les Beitsch, George Rust.

Methodology: Samantha S. Goldfarb, Kelsey Houser, George Rust.

Project administration: Samantha S. Goldfarb.

Resources: Samantha S. Goldfarb, Brittany A. Wells, Joedrecka S. Brown Speights, Les Beitsch, George Rust.

Software: Samantha S. Goldfarb.

Supervision: Samantha S. Goldfarb, Les Beitsch, George Rust.

Validation: Samantha S. Goldfarb, Brittany A. Wells.

Visualization: Samantha S. Goldfarb, George Rust.

Writing – original draft: Samantha S. Goldfarb, Brittany A. Wells, Joedrecka S. Brown Speights, Les Beitsch, George Rust.

Writing – review & editing: Samantha S. Goldfarb, Kelsey Houser, Brittany A. Wells, Joedrecka S. Brown Speights, Les Beitsch, George Rust.

References

1. World Health Organization. Preterm births rising globally. Maternal, newborn, child and adolescent health. Available from: http://www.who.int/maternal_child_adolescent/newborns/prematurity/en/
2. Malin GL, Morris RK, Riley R, Teune MJ, Khan KS. When is birthweight at term abnormally low? A systematic review and meta-analysis of the association and predictive ability of current birthweight standards for neonatal outcomes. *BJOG*. 2014; 121(5):515–26. <https://doi.org/10.1111/1471-0528.12517> PMID: 24397731
3. Mackay DF, GCS S, Dobbie R, Cooper SA, Pell JP. Obstetric factors and different causes of special educational need: retrospective cohort study of 407 503 schoolchildren. *Bjog-an international. J Obstet Gynaecol*. 2013; 120(3):297–308. <https://doi.org/10.1111/1471-0528.12071> PMID: 23189965
4. Van Nguyen JM, Abenhaim HA. Sudden infant death syndrome: review for the obstetric care provider. *Am J Perinatol*. 2013 Oct; 30(9):703–14. <https://doi.org/10.1055/s-0032-1331035> Epub 2013 Jan 5. PMID: 23292938
5. Births, Final Data for 2015. Table 24. Very preterm and preterm births: United States, 2007–2015, and very low birthweight and low birthweight births, by race and Hispanic origin of mother: United States, 1989–2015. *National Vital Statistics Reports*, Vol. 66, No. 1, January 5, 2017.
6. National Healthy Start Association. Infant mortality, low birth weight and racial disparity. Available from: <http://www.nationalhealthystart.org/site/assets/docs/Infant%20Mortality%20Low%20Birthweight.pdf>
7. U.S. Department of Health and Human Services, Health Resources and Services Administration, Maternal and Child Health Bureau. *Child Health USA 2014*. Available from: <http://mchb.hrsa.gov/chusa14/health-status-behaviors/infants/preterm-birth-low-birth-weight.html>
8. National Vital Statistics Reports. Infant mortality statistics from the 2013 period linked birth/infant death data set. Available from: https://www.cdc.gov/nchs/data/nvsr/nvsr64/nvsr64_09.pdf
9. Headley AJ. Generations of loss: Contemporary perspectives on Black infant mortality. *J Natl Med Assoc*. 2004; 96(7):987–94. PMID: 15253333
10. Iyasu S, Becerra J, Rowley D, Hogue C. Impact of very low birth weight on the black-white infant mortality gap. *Am J Prev Med*. 1992; 8(5):271–7. PMID: 1419125
11. Fry-Johnson YW, Levine R, Rowley D, Agbotu V, Rust G. United States Black:White infant mortality disparities are not inevitable: Identification of community resilience independent of socioeconomic status. *Ethn Dis*. 2010; 20(1Suppl 1):S1-131-5. PMID: 20521401
12. Rossen LM, Khan D, Schoendorf KC. Mapping geographic variation in infant mortality and related black-white disparities in the U.S. *Epidemiology*. 2016; 27(5):690–6. <https://doi.org/10.1097/EDE.0000000000000509> PMID: 27196804
13. Kershbaum AD, Langston MA, Levine RS, Saxton AM, Oyana TJ, Kilbourne BJ, et al. Exploration of preterm birth rates using the public health exposome database and computational analysis methods. *Int J Environ Res Public Health*. 2014; 11(12): 12346–66. PMID: PMC4276617 <https://doi.org/10.3390/ijerph111212346> PMID: 25464130

14. Brown Speights J, Goldfarb S, Wells B, Beitsch L, Levine RS, Rust G. State-level progress in reducing the black-white infant mortality gap, United States, 1993–2013. *Am J Public Health*. 2017; 107(5):775–82. <https://doi.org/10.2105/AJPH.2017.303689> PMID: 28323476
15. Rust G, Zhang S, Malhotra K, Reese L, McRoy L, Baltrus P, et al. Paths to health equity: Local area variation in progress toward eliminating breast cancer mortality disparities, 1990–2009. *Cancer*. 2015; 121(16):2765–74. <https://doi.org/10.1002/cncr.29405> PMID: 25906833
16. Rust G, Zhang S, Yu Z, Caplan L, Jain S, Ayer T, et al. Counties eliminating racial disparities in colorectal cancer mortality. *Cancer*. 2016; 122(11):1735–48. <https://doi.org/10.1002/cncr.29958> PMID: 26969874
17. Iodannis JPA. The proposal to lower p-value thresholds to .005. *JAMA*. 2018; 319(14):1429–30. <https://doi.org/10.1001/jama.2018.1536> PMID: 29566133
18. Russell R, Green NS, Steiner CA, Meikle S, Howse JL, Poschman K, et al. Cost of hospitalization for preterm and low birth weight infants in the United States. *Pediatrics*. 2007; 120(1): e1–e9. <https://doi.org/10.1542/peds.2006-2386> PMID: 17606536
19. Kulberg, H. The cost of poor birth outcomes. Available at <http://www.theplanningcouncil.org/inp/5Wellness/2LowBirthWeight/TheCostofPoorBirthOutcomes.pdf>
20. Hirai AH, Sappenfield WM, Kogan MD, Barfield WD, Goodman DA, Ghandour RM, et al. Contributors to excess infant mortality in the U.S. South. *Am J Prev Med*. 2014; 46(3):219–27. <https://doi.org/10.1016/j.amepre.2013.12.006> PMID: 24512860
21. Robling M, Bekkers MJ, Bell K, Butler CC, Cannings-John R, Channon S, et al. Effectiveness of a nurse-led intensive home-visitation programme for first-time teenage mothers (Building Blocks): A pragmatic randomized controlled trial. *Lancet*. 2016; 387(10014):146–55. [https://doi.org/10.1016/S0140-6736\(15\)00392-X](https://doi.org/10.1016/S0140-6736(15)00392-X) PMID: 26474809
22. Elder TE, Goddeeris JH, Haider SJ. Racial and ethnic infant mortality gaps and the role of socio-economic status. *Labour Econ*. 2016; 43:42–54. <https://doi.org/10.1016/j.labeco.2016.04.001> PMID: 27695196
23. McGrady GA, Sung JF, Rowley DL, Hogue CJ. Preterm delivery and low birth weight among first-born infants of black and white college graduates. *Am J Epidemiol*. 1992; 136(3):266–76. PMID: 1415148
24. Hillemeier MM, Lanza ST, Landale NS, Oropesa RS. Measuring early childhood health and health disparities: a new approach. *Matern Child Health J*. 2013; 17(10):1852–61. <https://doi.org/10.1007/s10995-012-1205-6> PMID: 23225206
25. El-Sayed AM, Finkton DW Jr, Paczkowski M, Keyes KM, Galea S. Socioeconomic position, health behaviors, and racial disparities in cause-specific infant mortality in Michigan, USA. *Prev Med*. 2015; 76:8–13. PMID: PMC4671200 <https://doi.org/10.1016/j.ypmed.2015.03.021> PMID: 25849882
26. Collins JW Jr, David RJ. Racial disparity in low birth weight and infant mortality. *Clin Perinatol*. 2009; 36(1):63–73. <https://doi.org/10.1016/j.clp.2008.09.004> PMID: 19161865
27. Witt WP, Park H, Wisk LE, Cheng ER, Mandell K, Chatterjee D, et al. Neighborhood disadvantage, pre-conception stressful life events, and infant birth weight. *Am J Public Health*. 2015; 105(5):1044–52. <https://doi.org/10.2105/AJPH.2015.302566> PMID: 25790423
28. Braveman P, Gottlieb L. The social determinants of health: It's time to consider the causes of the causes: *Public Health Rep*. 2014; 129(Suppl 2):19–31. PMID: PMC3863696.
29. Glinianaia SV, Ghosh R, Rankin J, Pearce MS, Parker L, Pless-Mulloli T. No improvement in socioeconomic inequalities in birthweight and preterm birth over four decades: a population-based cohort study. *BMC Public Health*. 2013; 13:345. <https://doi.org/10.1186/1471-2458-13-345> PMID: 23587186
30. Collins JW Jr, Rankin KM, David RJ. African American women's lifetime upward economic mobility and preterm birth: The effect of fetal programming. *Am J Public Health*. 2011; 101(4):714–9. <https://doi.org/10.2105/AJPH.2010.195024> PMID: 21330589
31. Collins JW Jr, David RJ, Handler A, Wall S. Very low birth weight in African-American infants: The role of maternal exposure to interpersonal racial discrimination. *Am J Public Health*. 2004; 94(12):2132–8. PMID: 15569965
32. Slaughter-Acey JC, Holzman C, Calloway D, Tian Y. Movin' on up: Socioeconomic mobility and the risk of delivering a small-for-gestational age infant. *Matern Child Health J*. 2016; 20(3):613–22. <https://doi.org/10.1007/s10995-015-1860-5> PMID: 26541591
33. Kane JB. An integrative model of inter- and intragenerational preconception processes influencing birthweight in the United States. *J Health Soc Behav*. 2015; 56(2):246–61. <https://doi.org/10.1177/0022146515582043> PMID: 25953279
34. Ncube CN, Enquobahrie DA, Burke JG, Ye F, Marx J, Albert SM. Racial disparities in the transgenerational transmission of low birthweight risk. *Ethn Health*. 2017; 19:1–12. <https://doi.org/10.1080/13557858.2017.1378804> PMID: 28922932.

35. Smid MC, Lee JH, Grant JH, Miles G, Stoddard GJ, Chapman DA, et al. Maternal race and intergenerational preterm birth recurrence. *Am J Obstet Gynecol*. 2017; 217(4):480.e1–480.e9. <https://doi.org/10.1016/j.ajog.2017.05.051> PMID: 28578169.
36. Loggins Clay S, Andrade FC. Role of stress in low birthweight disparities between black and white women: A population-based study. *J Paediatr Child Health*. 2015; 51(4):443–9. <https://doi.org/10.1111/jpc.12735> PMID: 25332097
37. Xaverius P, Salas J, Kiel D, Woolfolk C. Very low birth weight and perinatal periods of risk: disparities in St. Louis. *Biomed Res Int*. 2014; 2014:547234. <https://doi.org/10.1155/2014/547234> PMID: 25025058
38. Grady SC. Racial disparities in low birthweight and the contribution of residential segregation: A multi-level analysis. *Soc Sci Med*. 2006; 63(12):3013–29. <https://doi.org/10.1016/j.socscimed.2006.08.017> PMID: 16996670
39. Vang ZM, Elo IT. Exploring the health consequences of majority-minority neighborhoods: Minority diversity and birthweight among native-born and foreign-born blacks. *Soc Sci Med*. 2013; 97:56–65. <https://doi.org/10.1016/j.socscimed.2013.07.013> PMID: 24161089
40. Lake ET, Staiger D, Horbar J, Kenny MJ, Patrick T, Rogowski JA. Disparities in perinatal quality outcomes for very low birth weight infants in neonatal intensive care. *Health Serv Res*. 2015; 50(2):374–97. <https://doi.org/10.1111/1475-6773.12225> PMID: 25250882
41. Kozhimannil KB, Muoto I, Darney BG, Caughey AD, Snowden JM. Early elective delivery disparities between non-hispanic black and white women after statewide policy implementation. *Women's Health Issues*. 2018; 28(3):224–31. <https://doi.org/10.1016/j.whi.2017.11.008> PMID: 29273264
42. Dahlen HM, McCullough JM, Fertig AR, Dowd BE, Riley WJ. Texas Medicaid payment reform: Fewer early elective deliveries and increased gestational age and birthweight. *Health Aff (Millwood)*. 2017; 36(3):460–67. <https://doi.org/10.1377/hlthaff.2016.0910> PMID: 28264947
43. Krieger N, Gruskin S, Singh N, Kiang MV, Chen JT, Waterman PD, et al. Reproductive justice & preventable deaths: State funding, family planning, abortion, and infant mortality, US 1980–2010. *SSM Popul Health*. 2016; 2:277–93. <https://doi.org/10.1016/j.ssmph.2016.03.007> PMID: 27453928
44. Patrick SW, Warner KE, Pordes E, Davis MM. Cigarette tax increase and infant mortality. *Pediatrics*. 2016; 137(1). <https://doi.org/10.1542/peds.2015-2901> PMID: 26628730
45. Bartholomew KS, Abouk R. The effect of local smokefree regulations on birth outcomes and prenatal smoking. *Matern Child Health J*. 2016; 20(7):1526–38. <https://doi.org/10.1007/s10995-016-1952-x> PMID: 26987859
46. Patton D. State policy and health disparities: an examination of the impact of state offices of minority health. *J Health Care Poor Underserved*. 2014; 25(4):1982–2002. <https://doi.org/10.1353/hpu.2014.0155> PMID: 25418254
47. Vanderbilt AA, Wright MS, Brewer AE, Murithi LK, Coney P. Increasing knowledge and health literacy about preterm births in underserved communities: An approach to decrease health disparities, a pilot study. *Glob J Health Sci*. 2015 May; 17; 8(1):83–9. <https://doi.org/10.5539/gjhs.v8n1p83> PMID: 26234992
48. Meghea CI, You Z, Raffo J, Leach RE, Roman LA. Statewide Medicaid Enhanced Prenatal care programs and infant mortality. *Pediatrics*. 2015; 136(2):334–42. <https://doi.org/10.1542/peds.2015-0479> PMID: 26148955
49. Chen L, Crockett AH, Covington-Kolb S, Heberlein E, Zhang L, Sun X. Centering and Racial Disparities (CRADLE study): Rationale and design of a randomized controlled trial of centering pregnancy and birth outcomes. *BMC Pregnancy and Child Birth*. 2017; 17:118. PMID: PMC5390374
50. Barker DJ. A new model for the origins of chronic disease. *Med Health Care Philos*. 2001; 4(1):31–5. PMID: 11315417
51. Smedley BD. The lived experience of race and its health consequences. *Am J Public Health*. 2012; 102(5):933–5. PMID: PMC3483928 <https://doi.org/10.2105/AJPH.2011.300643> PMID: 22420805
52. Shrimali BP, Luginbuhl J, Malin C, Flournoy R, Siegel A. The Building Blocks Collaborative: Advancing a life course approach to health equity through multi-sector collaboration. *Matern Child Health J*. 2014; 18(2):373–9. <https://doi.org/10.1007/s10995-013-1278-x> PMID: 23807714
53. Pies C, Barr M, Strouse C, Kotelchuck M; Best Babies Zone Initiative Team. Growing a Best Babies Zone: Lessons learned from the pilot phase of a multi-sector, place-based initiative to reduce infant mortality. *Matern Child Health J*. 2016; 20(5):968–73. <https://doi.org/10.1007/s10995-016-1969-1> PMID: 27013517
54. Adler NE, Newman K. Adler NE, Newman K. Socioeconomic disparities in health: Pathways and policies. *Health Affairs*. 2002; 21(2). <https://doi.org/10.1377/hlthaff.21.2.60> PMID: 11900187
55. Fulda KG, Kurian AK, Balyakina E, Moerbe MM. Paternal race/ethnicity and very low birth weight. *BMC Pregnancy Childbirth*. 2014; 14:385. <https://doi.org/10.1186/s12884-014-0385-z> PMID: 25406725

56. Diez Roux AV. Investigating neighborhood and area effects on health. *Am J Public Health*. 2001; 91(11):1783–9. PMID: [11684601](https://pubmed.ncbi.nlm.nih.gov/11684601/)
57. MacQuillan EL, Curtis AB, Baker KM, Paul R, Back YO. Using GIS mapping to target public health interventions: Examining birth outcomes across GIS techniques. *J Community Health*. 2017; 42(4):633–8. <https://doi.org/10.1007/s10900-016-0298-z> PMID: [27885583](https://pubmed.ncbi.nlm.nih.gov/27885583/)