

## Clinical Article

# Association of Carotid Intraplaque Hemorrhage and Territorial Acute Infarction in Patients with Acute Neurological Symptoms Using Carotid Magnetization-Prepared Rapid Acquisition with Gradient-Echo

Jung Soo Park, M.D.,<sup>1</sup> Hyo Sung Kwak, M.D.,<sup>2,3</sup> Jong Myong Lee, M.D.,<sup>1</sup> Eun Jeong Koh, M.D., Ph.D.,<sup>1</sup> Gyung Ho Chung, M.D., Ph.D.,<sup>2</sup> Seung Bae Hwang, M.D., Ph.D.<sup>2</sup>

Departments of Neurosurgery,<sup>1</sup> Radiology,<sup>2</sup> Chonbuk National University Medical School and Hospital, Jeonju, Korea

Research Institute of Clinical Medicine of Chonbuk National University-Biomedical Research Institute of Chonbuk National University Hospital,<sup>3</sup> Jeonju, Korea

**Objective :** The purpose of our study was to assess prevalence of carotid intraplaque hemorrhage (IPH) and associations between territorial acute infarction and IPH on magnetization-prepared rapid acquisition with gradient-echo (MPRAGE) in patients with acute neurologic symptoms.

**Methods :** 83 patients with suspected acute neurologic symptoms were evaluated with both brain diffusion weighted imaging (DWI) and carotid MPRAGE sequences. Carotid plaque with high signal intensity on MPRAGE of >200% that of adjacent muscle was categorized as IPH. We analyzed the prevalence of IPH and its correlation with territorial acute infarction.

**Results :** Of 166 arteries, 39 had a carotid artery plaque. Of these arteries, 26 had carotid artery stenosis less than 50%. In all carotid arteries, MR-depicted IPH was found in 7.2% (12/166). High-signal intensity on DWI was found in 17.5% (29/166). Combined lesion with ipsilateral high-signal intensity on DWI and IPH on carotid MPRAGE sequence was found in 6 lesions (6/166, 3.6%). Of patients with carotid artery plaque, MR-predicted IPH was found in 30.8% (12/39) and match lesions with high-signal intensity on DWI and MPRAGE was found in 15.4% (6/39). MR-predicted IPH was significantly higher prevalence in high-grade stenosis group ( $p=0.010$ ). Relative risk between carotid MPRAGE-positive signal and ipsilateral high-signal intensity on DWI in arteries with carotid artery plaques was 6.8 ( $p=0.010$ ).

**Conclusion :** Carotid MPRAGE-positive signal in patients was associated with an increased risk of territorial acute infarction as detected objectively by brain DWI. The relative risk of stroke was increased in high-grade stenosis categories.

**Key Words :** MRI · Stroke · Carotid artery · Atherosclerosis.

## INTRODUCTION

Carotid atherosclerotic disease is a major risk factor for stroke and a major of systemic plaque burden<sup>2,6,8,13</sup>. The progression of carotid atherosclerosis is a complex and often longstanding phenomenon. Also, the progression of carotid atherosclerosis can be contributed to variable factors as followed; systemic factors such as age, sex, and statin therapy and local factors such as intraplaque hemorrhage (IPH), ulcer, and thin fibrous cap<sup>6,17,19-21</sup>. In multiple trials using 3-hydroxy-3-methylglutaryl coenzyme A reductase inhibitors or statins, reduction in plaque burden as measured by intima-media thickness is modest and slow as

compared to improvement in clinical outcome<sup>2,6,8,11,12,17</sup>. Complex carotid plaques included IPH, ulcer, or thin-fibrous cap were associated with the occurrence of subsequent cerebrovascular events<sup>10,22,23</sup>. Especially, IPH into the carotid atherosclerotic plaque is significantly associated with more rapid progression in wall and lipid-rich necrotic core (LRNC) size, as well as more rapid progression in luminal stenosis<sup>20</sup>.

High-resolution MRI, as a noninvasive imaging tool, has proved to be a modality with excellent capability for discriminating tissues of the carotid plaque, including the status of the fibrous cap, LRNC, calcium, and hemorrhage<sup>10,19-23,27</sup>. T1-weighted MR sequences and three-dimensional (3D) time-of-flight (TOF) angi-

• Received : July 14, 2014 • Revised : October 17, 2014 • Accepted : October 22, 2014

• Address for reprints : Hyo Sung Kwak, M.D.

Department of Radiology, Chonbuk National University Medical School and Hospital, 20 Geonji-ro, Deokjin-gu, Jeonju 561-712, Korea  
Tel : +82-63-250-2582, Fax : +82-63-272-0481, E-mail : kwak8140@jbnu.ac.kr

• This is an Open Access article distributed under the terms of the Creative Commons Attribution Non-Commercial License (<http://creativecommons.org/licenses/by-nc/3.0>) which permits unrestricted non-commercial use, distribution, and reproduction in any medium, provided the original work is properly cited.

ography are commonly used to detect IPH<sup>24-26</sup>. Far more accurate detection of IPH is now accomplished using advanced, heavily T1-weighted techniques including the magnetization-prepared rapid acquisition with gradient-echo (MPRAGE) sequence. The MPRAGE sequences for detection of IPH using histological confirmation has demonstrated significantly higher sensitivity and specificity compared with the conventional T1 or TOF sequences<sup>9</sup>. McNally et al.<sup>7</sup> reported that in the workup of acute stroke, carotid MPRAGE-positive signal was associated with an increased risk of territorial cerebral ischemic events as detected objectively by brain diffusion tensor imaging. The relative risk of stroke was increased in all carotid stenosis categories but was most elevated in the mild stenosis category. However, this study has only documented the relationship between MPRAGE-positive signals and cerebral ischemic events in Western populations.

The purpose of our study was to assess prevalence of IPH and associations between territorial acute infarction and IPH on MPRAGE in patients with acute neurologic symptoms.

## MATERIALS AND METHODS

### Patients

This study was conducted with Institutional Review Board approval. Informed consent was obtained from all patients. From April 2012 to January 2013, 136 patients who underwent stroke MR protocol because of acute neurologic symptoms were imaged with the additional carotid MPRAGE sequences. Of these patients, 22 were excluded due to poor image quality and 31 were excluded from the analysis: 1) co-existent >50% ipsilateral intracranial artery stenosis or luminal irregularity (n=13); 2) non-atherosclerotic vasculopathy, such as dissection or moyamoya disease (n=3); 3) evidence of cardioembolism such as atrial fibrillation or previous stroke history of cardiac origin (n=15). 166 arteries of 83 patients (61 males, 22 females; age range 59–89, median age 69 years-old) are eligible for data analysis. Main neurological symptoms of these patients were as follows; 21 dizziness, 14 dysarthria, 37 unilateral weakness, 9 mental change, and 2 hyperesthesia.

### Stroke MR and MPRAGE sequence

All patients with acute neurological symptoms underwent the baseline brain CT scans for evaluating intracranial or subarachnoid hemorrhage in the emergency department. MR examination was obtained with an Achieva 3.0-T Scanner (Philips Medical Systems, Best, the Netherlands) with a 16-channel head coil. Stroke MR imaging was performed immediately following CT scanning with the following techniques: 1) diffusion-weighted imaging (DWI); 2) 3D TOF MR angiography (MRA) of the intracranial arteries; 3) susceptibility-weighted imaging (SWI); 4) perfusion-weighted imaging (PWI); and contrast-enhanced MRA for evaluation of carotid artery. We also performed the MPRAGE sequence for this study. Total scan time was ap-

proximately 20–30 minutes.

DWI was conducted with a spin-echo-type echo-planar imaging sequence, with 3 b-values of 0, 500, and 1000 sec/mm<sup>2</sup> along all 3 orthogonal axes: repetition time (TR)/echo time (TE)=3000/80 ms; flap angle (FA)=90°; sensitivity encoding=3; field of view (FOV)=220×220 mm; matrix=128×128; section thickness/gap=5 mm/30%; scanning time=35–38 seconds. Axial dynamic gradient-echo echo-planar PWI was performed after tracking a bolus of 0.03 mmol/kg of gadofosvesetrisodium (Vasovist, Schering, Berlin, Germany). Acquisition parameters were as follows: TR/TE=1850/35 ms; FA=40°; FOV=230×230 mm; matrix=132×132; and section thickness/gap=5 mm/30%. After image reconstruction and processing, PWI data were transferred to a workstation (ADW 4.2; GE Healthcare, Milwaukee, WI, USA). For MRA, 3D multislab TOF-MRA from the petrous portion of the internal carotid artery (ICA) was generated with the following parameters: TR/TE=23/3.45 ms; FA=20°; FOV=200×200 mm; matrix=488×249; sensitivity encoding factor=2.5; slice thickness=1.2 mm; echo train length (ETL)=1; and number of average=1. We also performed contrast-enhanced carotid MRA from the aortic arch to whole brain by using coronal planes with a 3D spoiled gradient echo sequence optimized for high spatial resolution and an intravenous bolus injection of 0.03 mmol/kg of gadofosvesetrisodium (Vasovist, Schering, Berlin, Germany), which was administered with an automatic injector at a rate of 1 mL/s through an 18-gauge cannula placed in the antecubital vein of the right arm, followed by 15 mL of saline solution, and the following imaging parameters: TR/TE=4.9/1.7 ms, flip angle=27°, slice thickness=1.0 mm, matrix size=384×384, voxel size=1×1×0.7 mm.

For 3D MRPRAGE sequence, segmental acquisition was performed with the sequence TR, the inversion preparation time (TI), and the phase encoding order of the MPRAGE sequences adjusted to optimally identify IPH as hyperintense. Image parameters were as follows: TR/TE/TI=8.7/5.3/304 ms, FA=15°, ETL=32, FOV=140×140 mm, matrix=216×192. Images were obtained 20 mm below the carotid bifurcation to 20 mm above the carotid bifurcation at 1.0-mm slice thickness. The TI was chosen relative to the phase encoding acquisition to maximize contrast between hemorrhage and inflowing blood. Chemical fat saturation was used.

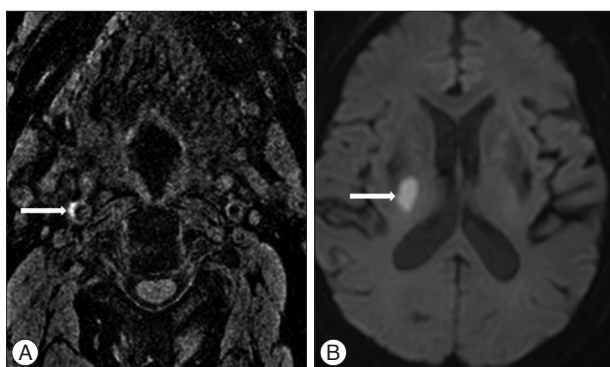
### Image analysis

A positive signal on MPRAGE sequence was defined by the location in the plaque and at least 2 image slices with at least 2-fold higher signal intensity compared to adjacent muscle (Fig. 1). Two experienced neuroradiologists determined MPRAGE status in this objective manner independent of brain MR findings. Consensus interpretation was used for the final analysis when interpretation differed. Also, the presence of carotid plaque and stenosis was calculated by one neuroradiologist using the North American Symptomatic Carotid Endarterectomy Trial criteria. Carotid plaque was categorized into 1–49% and ≥50% stenosis.

DWI positive was defined as hyperintense signal on DWI trace with associated decreased signal on the apparent diffusion coefficient map, corresponding to an acute ischemic event at the time of the scan (Fig. 1). Acute territorial ischemic events were first classification based on distribution (ipsilateral ICA territory, ipsilateral basal ganglia, and posterior circulation). Only DWI positive events in the ipsilateral ICA territory were placed in the DWI-positive category. DWI images were interpreted by an experienced neuroradiologist blinded to the carotid MPRAGE results.

**Statistical analysis**

Statistical analysis of carotid MPRAGE signal and brain DWI signal was performed using Fisher exact tests. Likelihood ratios



**Fig. 1.** A 65-year-old woman with an acute infarction of the right basal ganglia. A : A positive signal on magnetization-prepared rapid acquisition with gradient-echo image is defined by the location in the plaque and at least 2 image slices with at least 2-fold higher signal intensity compared to adjacent muscle (arrow). B : Diffusion-weighted imaging (DWI) positive is defined as hyperintense signal on DWI trace with associated decreased signal on the apparent diffusion coefficient map, corresponding to an acute ischemic event at the time of the scan (arrow).

from the 2x2 table were used to determine relative risk of a cerebrovascular ischemic event in MPRAGE-positive lesion with a 95% confidence interval.

**RESULTS**

Of 166 arteries, 39 (23.5%) on contrast-enhanced MRA and MPRAGE sequence had a carotid artery plaque. Mean percentage of carotid artery stenosis is 30% (range, 5–99%). Of 39 arteries with carotid atherosclerotic plaque, 26 (66.7%) had carotid artery stenosis less than 50% and 13 (33.3%) had stenosis above 50%. In all carotid arteries, MPRAGE-positive IPH was found in 7.2% (12/166). High-signal intensity on DWI was found in 17.5% (29/166). Combined lesion with ipsilateral high-signal intensity on DWI and MPRAGE-positive IPH was found in 6 lesions (3.6%).

Data of the MPRAGE-positive IPH and positive DWI in patients with carotid atherosclerotic plaque show in Table 1. Of 39 arteries with carotid artery plaque, MPRAGE-positive IPH was found in 30.8% (12/39) and match lesions with high-signal intensity on DWI and MPRAGE-positive IPH was found in 15.4% (6/39). MPRAGE-positive IPH was significantly higher prevalence in high-grade stenosis group ( $p=0.010$ ). Also, matched lesions between ipsilateral positive DWI and MPRAGE-positive IPH was significantly higher prevalence in high-grade stenosis ( $p=0.018$ ).

Data of the relationship of MPRAGE-positive IPH with territorial DWI-positive acute stroke events shows in Table 2. MPRAGE-positive carotids were associated with increased risk of a DWI-positive acute territorial stroke event (Fig. 2). The relative risk of an acute territorial stroke event with an MPRAGE-positive ca-

**Table 1.** Data of the MPRAGE-positive carotid IPH and positive DWI in patients with carotid atherosclerotic plaque

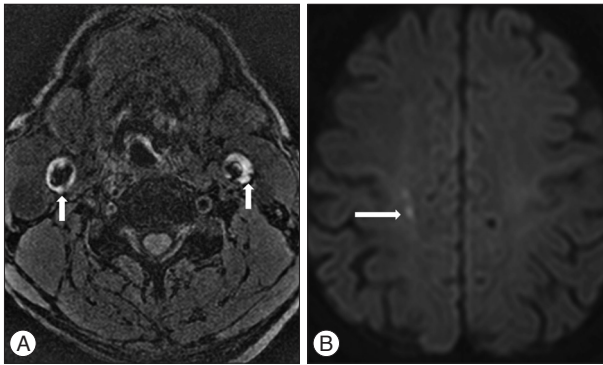
	<50% carotid stenosis (n=26)	≥50% carotid stenosis (n=13)	<i>p</i> value
MPRAGE-positive IPH	4 (15.4%)	8 (61.5%)	0.010
Positive DWI	2 (7.7%)	6 (46.2%)	0.017
Matched lesions between positive DWI and MPRAGE-positive IPH	1 (3.8%)	5 (38.5%)	0.018

MPRAGE : magnetization-prepared rapid acquisition with gradient-echo, DWI : diffusion-weighted imaging, IPH : intraplaque hemorrhage

**Table 2.** Data of the relationship of MPRAGE-positive IPH with territorial DWI-positive acute stroke events

	DWI of total arteries		DWI of carotid plaque arteries	
	+	-	+	-
MPRAGE				
+	6	6	6	6
-	23	131	2	25
Prevalence of DWI (+) (%)	17.5		20.5	
Prevalence of MPRAGE (+) (%)	7.2		30.8	
Specificity (%)	95.6 (90.7–98.4)		80.7 (62.5–92.6)	
Sensitivity (%)	20.7 (8.0–39.7)		75.0 (34.9–96.8)	
Relative risk	3.3 (1.7–6.6)		6.8 (1.6–28.7)	
<i>p</i> value	0.005		0.01	

MPRAGE : magnetization-prepared rapid acquisition with gradient-echo, DWI : diffusion-weighted imaging, IPH : intraplaque hemorrhage



**Fig. 2.** A 73-year-old man with an acute infarction of the right periventricular white matter. A : Magnetization-prepared rapid acquisition with gradient-echo (MPRAGE) image shows the bilateral high signal intensity in the carotid atherosclerotic plaque (arrows). B : Diffusion-weighted image (DWI) shows the diffusion restriction in right periventricular white matter (arrow). MPRAGE-positive carotid artery coupled with territorial stroke events on DWI.

rotid compared with an MPRAGE-negative carotid was 3.3 ( $p=0.005$ ). The relative risk of an acute territorial stroke event with an MPRAGE-positive carotid in patients with carotid atherosclerotic plaque compared with an MPRAGE-negative carotid was 6.8 ( $p=0.01$ ).

## DISCUSSION

This study used MRI at 3-T to immediately undertake combined carotid MPRAGE sequence and stroke MR protocol after admission at emergency room in patients with acute neurological symptoms. In this study, matched lesions between ipsilateral positive DWI and MPRAGE-positive IPH were significantly higher prevalence in high-grade stenosis. The relative risk of an acute territorial stroke event with an MPRAGE-positive carotid compared with an MPRAGE-negative carotid was 3.3-fold. The relative risk of an acute territorial stroke event with an MPRAGE-positive carotid in patients with carotid atherosclerotic plaque compared with an MPRAGE-negative carotid was 6.8-fold.

Early determination of the etiologic factors of acute ischemic stroke is essential for secondary prevention because the risk of recurrence is highly dependent on the underlying cause<sup>6</sup>. Major identified causes of acute ischemic stroke are extra- or intracranial atheroma, cardioembolic sources, microvascular disease, aortic arch atheroma, and cryptogenic factors. Most hospitals about patients with acute stroke performed stroke MRI after initial brain CT at admission of emergency room. Stroke MRI had been demonstrated to be more sensitive for the detection of acute ischemia and more specific for delineation of infarction core volume when compared to CT<sup>3</sup>. Recently, some studies reported brain MR examination combined sequences of carotid plaque characterization such as MPRAGE, or conventional plaque MR and the relationship between vulnerable carotid plaque and territorial stroke event<sup>5,7</sup>. This study was performed the relationship between territorial acute ischemic stroke and carotid IPH

using acute stroke MR examination with MPRAGE sequence.

Although IPH in the carotid atherosclerotic plaque is significantly associated with more rapid progression in luminal stenosis<sup>20</sup>, the association of hemorrhage and symptoms remains a controversial subjects<sup>4,5,14,16,19</sup>. Sitzer et al.<sup>16</sup> demonstrated that ulceration and luminal thrombus were the main sources of downstream cerebral microemboli in patients with high-grade internal carotid stenosis. Kolodgie et al.<sup>4</sup> found evidence that showed a hemorrhage might represent a potential atherogenic stimulus. Symptomatic groups had higher prevalence of complex (American Heart Association type IV) plaques on carotid plaque MR<sup>5,14</sup>. Especially, fibrous cap rupture was associated with increases in DWI lesion in the brain<sup>5</sup>. Takaya et al.<sup>21</sup> reported that the presence of IPH or fibrous cap rupture was significantly associated with subsequent carotid cerebrovascular event. Some from carotid endarterectomy (CEA) studies have supported the relationship of carotid IPH with acute stroke. Spagnoli et al.<sup>18</sup> found that IPH in CEA specimens corresponded with a recent clinical stroke or transient ischemic attack based on the presence of neurological symptoms.

Early identification of patients with IPH is very important for decrease of future sequela and optimizing management. The development of IPH posed an immediate and long-term promoting effect on plaque progression. IPH seems to alter the biology and natural history of carotid atherosclerosis<sup>20</sup>. High-resolution MR imaging is recognized as a reliable method for the comprehensive characterization of atherosclerotic plaque tissue composition and the identification of IPH in particular<sup>10,21-23,27</sup>. T1-weighted MR sequences are commonly used to detect IPH owing to the degradation of hemorrhage into methemoglobin, which results in T1 shortening and correspondingly causes high signal intensity on T1-weighted MR images. Among the T1-weighted MR sequences, black blood T1-weighted fast spin-echo and 3D TOF angiography are currently used for clinical examination. Our study used MPRAGE because recent research has shown this sequence has higher sensitivity and specificity in detecting hemorrhage compared with black blood T1-weighted fast spin-echo and TOF angiography<sup>9</sup>. The MPRAGE sequence combined with contrast-enhanced T1-weighted and TOF angiography is more practical for many institutions for evaluation of carotid plaque components included IPH. In the current study, the heavily T1-weighted signal of the MPRAGE sequence was accomplished by a magnetization preparation inversion pulse<sup>1,28</sup>. From signal simulation that incorporated T1 values of muscle, blood, and hemorrhage, the segment TR and T1 in the MPRAGE sequence were selected to suppress the flowing blood signal and enhance tissues with short T1 relative to muscle.

Current studies reported that carotid plaque MR with multiple sequences has used in the workup of acute stroke in a one week after symptom onset<sup>5,10</sup>. *In situ* type VI plaque identified by carotid MR imaging was associated with ipsilateral acute transient ischemic attack or ischemic stroke. The prevalence of IPH at baseline in Western population was 49.0% and the presence of

IPH was associated with a 6-fold higher risk for events<sup>15</sup>. Also, the annualized event rate in subjects with detectable IPH was 17.71% compared with 2.43% in patients without IPH. McNally et al.<sup>7</sup> performed that carotid MPRAGE in Western patients has been used in the workup of stroke in an emergent setting as our study. Carotid MPRAGE-positive signal was associated with an acute cerebral territorial ischemic event with a relative risk of 6.4. In our study, the prevalence of IPH at baseline was 30.8% and MPRAGE-positive carotid in our patients with acute neurologic symptoms had a further 3.3-fold increased risk of acute stroke on DWI compared with MPRAGE-negative carotid. This result was relatively low prevalence compared with Western study<sup>7,15</sup>. McNally et al.<sup>7</sup> reported that a high grade carotid stenosis had a relatively increased risk of acute stroke if the lesion was MPRAGE-positive. Our study shows that MPRAGE-positive carotid in patients with carotid atherosclerotic plaque had a higher increased risk of acute stroke compared with MPRAGE-negative carotid.

Our study had some limitations. First, scan time in acute stroke MR examination has important implications for the time onset of treatment and prognosis. Therefore, acute stroke MR examination was generally used the limited sequences such as DWI, SWI, PWI, TOF-MRA, and contrast-enhanced MRA. Scan time of MPRAGE imaging was approximately 4 minutes, which was longer than required by other imaging methods. However, we believe that the benefits of early and accurate detection of carotid IPH awarded by this imaging technique outweigh the con of longer scan times. Second, our study was focused the atherosclerotic lesion of intracranial and extracranial vessels, although patients with intracranial atherosclerotic plaque were excluded in this study. Major causes of acute ischemic stroke are major arterial atheroma, cardioembolic sources, microvascular disease, and cryptogenic factors. Acute ischemic stroke of vulnerable carotid plaque such as IPH, fibrous cap rupture, or ulcer was relatively low prevalence compared with that of cardiac sources. Finally, our study is the lack of a gold standard histological reference. Ota et al.<sup>9</sup> performed the diagnostic performances of three T1-weighted 3.0-T MR sequences at carotid IPH imaging, with histologic analysis as the reference standard. MPRAGE sequence, as compared with T1-weighted fast spin echo and TOF sequences, demonstrated higher diagnostic capability for the detection and quantification of IPH. Therefore, we considered that carotid MPRAGE-positive was strongly supported IPH.

## CONCLUSION

MPRAGE-positive carotid plaque in population was associated with increased risk of acute territorial ischemic strokes. Especially, MPRAGE-positive in patients with carotid atherosclerotic plaque was relatively higher risk of acute ischemic stroke. This study found that IPH in carotid atherosclerotic plaque was present in a high proportion of acute ischemic strokes. Therefore, routine use of the MPRAGE sequence in stroke MR examina-

tion may lead to a more accurate stroke risk estimate and more accurate determination of a carotid source of ischemic events.

## • Acknowledgements

This paper was supported by Fund of Biomedical Research Institute, Chonbuk National University Hospital.

## References

1. Bitar R, Moody AR, Leung G, Symons S, Crisp S, Butany J, et al. : In vivo 3D high-spatial-resolution MR imaging of intraplaque hemorrhage. *Radiology* 249 : 259-267, 2008
2. de Sauvage Nolting PR, de Groot E, Zwinderman AH, Buirma RJ, Trip MD, Kastelein JJ : Regression of carotid and femoral artery intima-media thickness in familial hypercholesterolemia : treatment with simvastatin. *Arch Intern Med* 163 : 1837-1841, 2003
3. Jauch EC, Saver JL, Adams HP Jr, Bruno A, Connors JJ, Demaerschalk BM, et al. : Guidelines for the early management of patients with acute ischemic stroke : a guideline for healthcare professionals from the American Heart Association/American Stroke Association. *Stroke* 44 : 870-947, 2013
4. Kolodgie FD, Gold HK, Burke AP, Fowler DR, Kruth HS, Weber DK, et al. : Intraplaque hemorrhage and progression of coronary atheroma. *N Engl J Med* 349 : 2316-2325, 2003
5. Lindsay AC, Biasioli L, Lee JM, Kyliantreas I, MacIntosh BJ, Watt H, et al. : Plaque features associated with increased cerebral infarction after minor stroke and TIA : a prospective, case-control, 3-T carotid artery MR imaging study. *JACC Cardiovasc Imaging* 5 : 388-396, 2012
6. Lovett JK, Coull AJ, Rothwell PM : Early risk of recurrence by subtype of ischemic stroke in population-based incidence studies. *Neurology* 62 : 569-573, 2004
7. McNally JS, Kim SE, Yoon HC, Findeiss LK, Roberts JA, Nightingale DR, et al. : Carotid magnetization-prepared rapid acquisition with gradient-echo signal is associated with acute territorial cerebral ischemic events detected by diffusion-weighted MRI. *Circ Cardiovasc Imaging* 5 : 376-382, 2012
8. Mercuri M, Bond MG, Sirtori CR, Veglia F, Crepaldi G, Feruglio FS, et al. : Pravastatin reduces carotid intima-media thickness progression in an asymptomatic hypercholesterolemic mediterranean population : the Carotid Atherosclerosis Italian Ultrasound Study. *Am J Med* 101 : 627-634, 1996
9. Ota H, Yarnykh VL, Ferguson MS, Underhill HR, Demarco JK, Zhu DC, et al. : Carotid intraplaque hemorrhage imaging at 3.0-T MR imaging : comparison of the diagnostic performance of three T1-weighted sequences. *Radiology* 254 : 551-563, 2010
10. Parmar JP, Rogers WJ, Mugler JP 3rd, Baskurt E, Altes TA, Nandalur KR, et al. : Magnetic resonance imaging of carotid atherosclerotic plaque in clinically suspected acute transient ischemic attack and acute ischemic stroke. *Circulation* 122 : 2031-2038, 2010
11. Prevention of cardiovascular events and death with pravastatin in patients with coronary heart disease and a broad range of initial cholesterol levels. The Long-Term Intervention with Pravastatin in Ischaemic Disease (LIPID) Study Group. *N Engl J Med* 339 : 1349-1357, 1998
12. Randomised trial of cholesterol lowering in 4444 patients with coronary heart disease : the Scandinavian Simvastatin Survival Study (4S). *Lancet* 344 : 1383-1389, 1994
13. Rosamond W, Flegal K, Friday G, Furie K, Go A, Greenlund K, et al. : Heart disease and stroke statistics--2007 update : a report from the American Heart Association Statistics Committee and Stroke Statistics Subcommittee. *Circulation* 115 : e69-e171, 2007
14. Saam T, Cai J, Ma L, Cai YQ, Ferguson MS, Polissar NL, et al. : Compar-

- ison of symptomatic and asymptomatic atherosclerotic carotid plaque features with in vivo MR imaging. *Radiology* 240 : 464-472, 2006
15. Saam T, Hetterich H, Hoffmann V, Yuan C, Dichgans M, Poppert H, et al. : Meta-analysis and systematic review of the predictive value of carotid plaque hemorrhage on cerebrovascular events by magnetic resonance imaging. *J Am Coll Cardiol* 62 : 1081-1091, 2013
  16. Sitzer M, Müller W, Siebler M, Hort W, Kniemeyer HW, Jäncke L, et al. : Plaque ulceration and lumen thrombus are the main sources of cerebral microemboli in high-grade internal carotid artery stenosis. *Stroke* 26 : 1231-1233, 1995
  17. Smilde TJ, van Wissen S, Wollersheim H, Trip MD, Kastelein JJ, Stalenhoef AF : Effect of aggressive versus conventional lipid lowering on atherosclerosis progression in familial hypercholesterolaemia (ASAP) : a prospective, randomised, double-blind trial. *Lancet* 357 : 577-581, 2001
  18. Spagnoli LG, Mauriello A, Sangiorgi G, Fratoni S, Bonanno E, Schwartz RS, et al. : Extracranial thrombotically active carotid plaque as a risk factor for ischemic stroke. *JAMA* 292 : 1845-1852, 2004
  19. Sun J, Balu N, Hippe DS, Xue Y, Dong L, Zhao X, et al. : Subclinical carotid atherosclerosis : short-term natural history of lipid-rich necrotic core--a multicenter study with MR imaging. *Radiology* 268 : 61-68, 2013
  20. Sun J, Underhill HR, Hippe DS, Xue Y, Yuan C, Hatsukami TS : Sustained acceleration in carotid atherosclerotic plaque progression with intraplaque hemorrhage : a long-term time course study. *JACC Cardiovasc Imaging* 5 : 798-804, 2012
  21. Takaya N, Yuan C, Chu B, Saam T, Polissar NL, Jarvik GP, et al. : Presence of intraplaque hemorrhage stimulates progression of carotid atherosclerotic plaques : a high-resolution magnetic resonance imaging study. *Circulation* 111 : 2768-2775, 2005
  22. Takaya N, Yuan C, Chu B, Saam T, Underhill H, Cai J, et al. : Association between carotid plaque characteristics and subsequent ischemic cerebrovascular events : a prospective assessment with MRI--initial results. *Stroke* 37 : 818-823, 2006
  23. Turc G, Oppenheim C, Naggara O, Eker OF, Calvet D, Lacour JC, et al. : Relationships between recent intraplaque hemorrhage and stroke risk factors in patients with carotid stenosis : the HIRISC study. *Arterioscler Thromb Vasc Biol* 32 : 492-499, 2012
  24. Yamada K, Song Y, Hippe DS, Sun J, Dong L, Xu D, et al. : Quantitative evaluation of high intensity signal on MIP images of carotid atherosclerotic plaques from routine TOF-MRA reveals elevated volumes of intraplaque hemorrhage and lipid rich necrotic core. *J Cardiovasc Magn Reson* 14 : 81, 2012
  25. Yim YJ, Choe YH, Ko Y, Kim ST, Kim KH, Jeon P, et al. : High signal intensity halo around the carotid artery on maximum intensity projection images of time-of-flight MR angiography : a new sign for intraplaque hemorrhage. *J Magn Reson Imaging* 27 : 1341-1346, 2008
  26. Yoshimura S, Yamada K, Kawasaki M, Asano T, Kanematsu M, Takamatsu M, et al. : High-intensity signal on time-of-flight magnetic resonance angiography indicates carotid plaques at high risk for cerebral embolism during stenting. *Stroke* 42 : 3132-3137, 2011
  27. Yuan C, Mitsumori LM, Ferguson MS, Polissar NL, Echelard D, Ortiz G, et al. : In vivo accuracy of multispectral magnetic resonance imaging for identifying lipid-rich necrotic cores and intraplaque hemorrhage in advanced human carotid plaques. *Circulation* 104 : 2051-2056, 2001
  28. Zhu DC, Ferguson MS, DeMarco JK : An optimized 3D inversion recovery prepared fast spoiled gradient recalled sequence for carotid plaque hemorrhage imaging at 3.0 T. *Magn Reson Imaging* 26 : 1360-1366, 2008