

Research article

Open Access

Autocrine regulation of cell proliferation by estrogen receptor-alpha in estrogen receptor-alpha-positive breast cancer cell lines

Huining Tan, Yili Zhong and Zhongzong Pan*

Address: Department of Animal Science, Vermont Cancer Center, University of Vermont, Burlington, VT 05405, USA

Email: Huining Tan - htan1@uvm.edu; Yili Zhong - yzhong@uvm.edu; Zhongzong Pan* - zpan@uvm.edu

* Corresponding author

Published: 26 January 2009

Received: 19 September 2008

BMC Cancer 2009, 9:31 doi:10.1186/1471-2407-9-31

Accepted: 26 January 2009

This article is available from: <http://www.biomedcentral.com/1471-2407/9/31>

© 2009 Tan et al; licensee BioMed Central Ltd.

This is an Open Access article distributed under the terms of the Creative Commons Attribution License (<http://creativecommons.org/licenses/by/2.0>), which permits unrestricted use, distribution, and reproduction in any medium, provided the original work is properly cited.

Abstract

Background: Estrogen receptor- α (ER α) is essential for mammary gland development and is a major oncogene in breast cancer. Since ER α is not colocalized with the cell proliferation marker Ki-67 in the normal mammary glands and the majority of primary breast tumors, it is generally believed that paracrine regulation is involved in ER α mediated cell proliferation. In the paracrine model, ER α -positive cells don't proliferate but will release some paracrine growth factors to stimulate the neighboring cells to proliferate. In a subpopulation of cancer cells in some primary breast tumors, however, ER α does colocalize with the cell proliferation marker Ki-67, suggesting an autocrine regulation by ER α in some primary breast tumors.

Methods: Colocalization of ER α with Ki-67 in ER α -positive breast cancer cell lines (MCF-7, T47D, and ZR75-1) was evaluated by immunofluorescent staining. Cell cycle phase dependent expression of ER α was determined by co-immunofluorescent staining of ER α and the major cyclins (D, E, A, B), and by flow cytometry analysis of ER α^{high} cells. To further confirm the autocrine action of ER α , MCF-7 cells were growth arrested by ICI182780 treatment, followed by treatment with EGFR inhibitor, before estrogen stimulation and analyses for colocalization of Ki-67 and ER α and cell cycle progression.

Results: Colocalization of ER α with Ki-67 was present in all three ER α -positive breast cancer cell lines. Unlike that in the normal mammary glands and the majority of primary breast tumors, ER α is highly expressed throughout the cell cycle in MCF-7 cells. Without E2 stimulation, MCF-7 cells released from ICI182780 treatment remain at G1 phase. E2 stimulation of ICI182780 treated cells, however, promotes the expression and colocalization of ER α and Ki-67 as well as the cell cycle progressing through the S and G2/M phases. Inhibition of EGFR signaling does not inhibit the autocrine action of ER α .

Conclusion: Our data indicate that ER α can mediate estrogen-induced cell proliferation in an autocrine mode in ER α -positive breast cancer cell lines. All of the three ER α -positive cell lines used in our study showed colocalization of ER α and Ki-67, indicating that these cell lines might be originated from primary tumor cells with autocrine regulation.

Background

The ovarian-derived steroid hormone estrogen is one of the main regulators of mammary epithelial cell proliferation and differentiation. While estrogen is required for normal mammary gland development, cumulative exposure to estrogen during a woman's lifetime is a high risk factor for breast malignancy. The action of estrogen is exerted by binding and activating the estrogen receptors, ER α and ER β . Studies on the expression patterns of estrogen receptors and gene knock-out mouse models indicate that ER α is the primary estrogen receptor for mammary epithelial cell proliferation and differentiation. While ER α is expressed exclusively in the epithelial cells, ER β is expressed in both epithelial and stromal cells but the expression of ER β in the epithelial cells is very weak [1-4]. In ER β knock-out mice, the mammary glands can still form the bronchoalveolar structure and lactate normally [5,6]. In ER α knock-out mice, however, the mammary gland remains at rudimentary duct stage without further development [7-9]. While the role of ER β in breast cancer is less understood, ER α is one of the most known oncogenes in breast cancer [10-12]. Abnormal expression of ER α is found in about 70–80% of human breast cancers, and about 50% of ER α -positive breast cancer patients respond to anti-estrogen therapy [10,13]. When overexpressed in the mammary gland epithelial cells of transgenic mice, ER α leads to mammary malignancy [14,15].

Despite the significant role of ER α in mediating estrogen-induced cell proliferation in normal mammary development and breast cancer, the mechanism is still not fully understood. In the normal mammary gland, ER α expression is found only in a subpopulation of the mammary epithelial cells and the percentage of ER α -positive cells is affected by the physiologic conditions. Unlike most other cellular receptors, ER α expression is not found in proliferating mammary epithelial cells [1-3,16-18]. This observation leads to the prevailing concept that ER α mediates cell proliferation in a paracrine manner [1,19]. In this paracrine model, ER α -positive cells don't proliferate; the ER α -positive cells, however, when stimulated by estrogen, will produce and release paracrine growth factors, which in turn stimulate the neighboring cells to proliferate [1,9]. The EGF family member amphiregulin could be one of those important paracrine growth factors involved in ER α -mediated mammary gland epithelial cell proliferation [20]. It is not clear why ER α -positive cells cannot proliferate, or why ER α does not stimulate cell proliferation in an autocrine mode or in both autocrine and paracrine modes. A recent study by Cheng et al. challenged the paradigm that ER α cannot mediate ER α -positive cell proliferation [17]. The authors proposed that ER α is degraded early in the cell cycle, which accounts for the dissociation of the ER α -staining and cell proliferation marker.

In contrast to the mechanism in normal mammary tissues, ER α might mediate cancer cell proliferation via paracrine and/or autocrine modes in primary breast cancers. In ER α -positive primary breast cancers, the percentage of ER α -staining cells varies from 10% to 50% or higher [1,3,21,22]. Most of the ER α -staining cells are not stained with Ki-67 in these ER α -positive primary breast tumors [1,3,23,24]. In some primary breast tumors, however, ER α does colocalize with the cell proliferation marker Ki-67 in a sub-population of tumor cells; the percentage of ER α and Ki-67 dual-staining cells varies among different patients, from 0% to ~5% of total cells [1,3]. The co-staining of ER α and Ki-67 suggests that ER α -positive cells in these primary breast tumors might be capable of proliferating, i.e., ER α might be able to mediate cell proliferation via autocrine fashion in these primary breast tumor cells.

Using breast cancer cell line models, ER α has been shown to have non-genomic effect in addition to the traditional genomic action [25]. In its genomic action as a transcriptional factor, ER α activation in MCF-7 cells can induce the expression of cyclin D and myc to promote cell cycle progression [26-29]. When stimulated by estrogen, the effect on cell proliferation in MCF-7 cells is usually not obvious until 5–7 days after the stimulation [30-32]. It is not clear why the impact is delayed for such long time and that raises the question whether the activation of ER α alone is sufficient to drive cell cycle progression through all the phases for mitosis. For the non-genomic action of ER α , cell signaling initiated from the cell surface can activate multiple pathways such as the ERK and AKT pathways [33-35]. Using the EGFR inhibitor, Levine and colleagues demonstrated that EGFR is required for the cell surface ER α -activated signaling transduction [35]. Marks and colleagues demonstrated that inhibition of the MAPK and PI3K-AKT pathways can prevent estrogen-induced mitogenesis in MCF-7 cells [36]. Considering all of the information derived from different perspectives, it is very likely that MCF-7 cells and some other ER α -positive breast cancer cell lines might be regulated by ER α via the autocrine as well as the paracrine modes. In this study, we demonstrated that ER α is colocalized with Ki-67 in MCF-7, T47D, and ZR75-1 cells, the ER α -positive breast cancer cell lines used in our study. Using MCF-7 cell line, we demonstrated that ER α is present in all the phases of cell cycle and activation of ER α in G1 phase promotes cell cycle progression through mitogenesis, supporting the autocrine mode of regulation. Finally, we demonstrated that EGFR activation is not required for the autocrine regulation of cell proliferation by ER α .

Methods

Chemicals and antibodies

Antibodies for ER α (F10), Ki-67 (H-300), cyclin A (C-19), Cyclin B (H-20), cyclin D1 (H-295), cyclin E (C-19) were

obtained from Santa Cruz (Santa Cruz, CA). Blocking peptides for ER α (F10), cyclin A (C-19), cyclin E (C-19) were obtained from Santa Cruz (Santa Cruz, CA). Antibodies for ERK1/2 (137F5), phospho-ERK1/2 (E10), AKT, phospho-AKT/Ser473, and EGFR were obtained from Cell Signaling Technology (Danvers, MA). Secondary antibody conjugated with Alexa Fluor 488 (Molecular Probes, Inc, Eugene, OR) was used for green fluorescent staining, secondary antibody conjugated with Rhodamine Red-X (Jackson ImmunoResearch, West Grove, PA) was used for red fluorescent staining. Heat inactivated FBS and Charcoal-Dextrin stripped FBS (CD-FBS) were obtained from Omega (Tarzana, CA). Estrogen was obtained from Sigma (St. Louis, MO). ICI182780 was obtained from TOCRIS (Ellisville, MO). Gefitinib was obtained from LC Laboratories (Woburn, MA). EGF was obtained from Invitrogen (Carlsbad, CA).

Cell culture and treatments

DMEM/F12 medium (MediaTech Inc, Herndon, VA) containing 10% heat inactivated FBS and 5 μ g/ml insulin was used for routine maintenance of the three ER α -positive breast cancer cell lines, MCF-7, T47D, and ZR75-1 (ATCC). For experimental assays, phenol-red free DMEM/F12 (MediaTech Inc, Herndon, VA) containing 5% CD-FBS was used unless otherwise specified. To arrest cells in G1 phase by ICI182780, cells were seeded in culture dishes for 1–2 days to let the cells reach about 30–40% confluency before replacement with medium containing ICI182780. To evaluate the effect of estrogen stimulation, cells were stimulated by adding E2 either after removal of ICI182780 or in the presence of ICI182780. For estrogen stimulation after removal of ICI182780, cells treated with ICI182780 were washed briefly two times with serum-free phenol red-free DMEM/F12 to remove ICI182780, followed by replacement with medium containing 5 nM estrogen but without ICI182780. The control cells were replaced with medium containing vehicle only. For estrogen stimulation in the presence of ICI182780, cells were treated with 10 nM ICI182780 for various times before adding ten fold of E2 (100 nM) to the cells without removing ICI182780. ICI182780 stock solution was made at 10 mM in DMSO, then serially diluted in DMSO to 10 μ M before diluted in culture medium. Estrogen stock solution was made at 10 mM in ethanol, then serially diluted in ethanol to 10 μ M before diluted in culture medium. To inhibit the EGFR activation, cells were treated with Gefitinib for 2 hr first; without removing Gefitinib, estrogen or EGF was then added to the cells for stimulation. Gefitinib stock was made in DMSO at 1–50 mM, the stock was diluted in culture medium to make the final concentrations at 1–50 μ M.

Immunofluorescent staining

Cells grown on glass coverslips were briefly washed with ice-cold Dulbecco's PBS and fixed with cold 4% parafor-

maldehyde containing 0.01% Triton X-100 for 25 min on ice. After washing once briefly with PBS-T (Dulbecco's PBS containing 0.01% Triton X-100), the cells were treated with 0.05% Triton x-100 in PBS for 10 min for permeabilization. The cells were washed once briefly with PBS-T, followed by blocking in PBS-T containing 5% normal serum and 50 mM NH₄Cl for 30 min at room temperature. The cells were then incubated with primary antibodies diluted in PBS-T containing 1% normal serum. Anti-ER α antibody was diluted at 1:50, anti-Ki-67 at 1:100, anti-cyclin D at 1:150, anti-cyclin E at 1:100, anti-cyclin A at 1:100, and anti-cyclin B at 1:100. For the antibodies with blocking peptides available, the antibodies (ER α , cyclin A, cyclin E) were evaluated for its binding specificity by incubation with 5 fold of blocking peptides before applying to cells for primary antibody incubation. After overnight incubation at 4°C, the cells were washed four times with PBS-T, 7 min each time. Then the cells were incubated for 1 hr at room temperature with fluorescent dye-conjugated secondary antibodies (1:200) in PBS-T containing 1% normal serum. The cells were washed 4 times with PBS-T, 7 min each time before mounted on slides with VectoShield with DAPI (Vector Laboratories, Burlingame, CA). Immunofluorescent staining(s) was observed under Olympus BX50 Fluorescence Microscope with Optronics MagnaFire digital camera (Microscope Image Center, UVM).

Flow cytometry analysis

For analysis of cell cycle distribution, cells were harvested by trypsinization, pelleted by centrifugation, and washed once with Dulbecco's PBS. While vortexing cells, ice-cold 70–75% ethanol was added drop wise to resuspend the cells. The cells were fixed in 70% ethanol for at least 1 hr at 4°C before staining or stored at -20°C freezer. Before staining, 1–3 millions of cells were pelleted, washed once with PBS, followed by resuspension in 1 ml PBS containing 20 μ g/ml PI (propidium iodide), 150 μ g/ml RNaseA, 10 mM EDTA, and 0.1% Triton X-100. Incubation was carried in the dark at 37°C for 15–30 min. For the analysis of cell cycle distribution of ER α -staining cells, cells were harvested by trypsinization and the cell number counted. The cells were pelleted by centrifugation (2000 rpm, 5 min, 4°C). After resuspension with culture medium, 3 million of cells were transferred into Ependorff tube and pelleted by centrifugation (500 \times g, 4°C, 2 min). The cell pellet was resuspended in 1 ml PBS-T containing 1% paraformaldehyde and cells were fixed on ice for 10 min. The cells were pelleted by brief centrifugation, resuspended in PBS containing 0.05% Triton-X100 for permeabilization at room temperature for 5 min. After brief washing, cells were incubated with 5% normal serum in PBS-T (30 min, room temperature) for blocking. Cells were pelleted and resuspended in PBS-T containing anti-ER α (F10, 1:100 dilution) and 0.5% BSA, followed by incubation at 4°C for overnight. The cells were washed 4 times with PBS-T, 7

min each, by centrifugation and resuspension, followed by incubation with the secondary antibody anti-mouse Alexa Fluor 488 (1:300) at room temperature for 40 min. After washing with PBS-T for 4 times, 7 min each, the cells were incubated with 0.5 ml PI-RNaseA solution for 30 min at 37°C. Flow cytometry analysis was performed using the Coulter Epics XL-MCL (VCC core facility, UVM). About 20,000 cells were analyzed for each sample.

Protein analysis by immuno-blotting

Cells at 70–80% confluence were washed briefly twice with ice-cold D-PBS before scraping on ice with lysis buffer (20 mM Tris-HCl, pH 7.5; 150 mM NaCl; 2.5 mM sodium pyrophosphate; 1 mM sodium β -glycerophosphate; 5 mM NaF, 1 mM Na₃VO₄, 1 mM phenylmethylsulfonyl fluoride, 1% Triton X-100, and 1 tablet of protease inhibitor mixture (Roche Molecular Biochemicals, Indianapolis, IN) per 40 ml of lysis buffer). Cellular debris was removed by centrifugation (14,000 \times g for 15 min at 4°C). For SDS-PAGE, total cell lysate containing ~30 μ g proteins were separated on 12% SDS-PAGE gel and transferred onto PVDF membranes (Millipore, Bedford, MA). Immunoblotting was carried out followed standard procedures [37,38].

Results

Colocalization of ER α and Ki67 in ER α -positive breast cancer cell lines

ER α is not colocalized with the cell proliferation marker Ki-67 in normal mammary cells, and colocalization of ER α and Ki-67 is rare even in primary breast tumors [1-3,16-18,23]. To study the mechanism of how cell proliferation is mediated by ER α , the ER α -positive breast cancer cell lines were used in our study. In all the three ER α -pos-

itive cell lines evaluated in this study, i.e., MCF-7, T47D, and ZR75-1, a large proportion of cells showed dual-staining of ER α and Ki-67 (Fig. 1). The colocalization of ER α with Ki-67 was evaluated in cells under different culture conditions and the dual-staining was observed in all culture conditions, including cell culture in regular DMEM/F12 supplemented with 10% FBS, phenol-red free DMEM/F12 supplemented with charcoal dextrin stripped FBS, with and without insulin, with and without estrogen. While these data don't exclude the possibility of a paracrine regulation of cell proliferation by ER α in these cells, the colocalization of ER α and Ki-67 does support the hypothesis that ER α may mediate cell proliferation in an autocrine mode in these ER α -positive breast cancer cell lines, a mechanism absent in normal mammary cells and most primary breast tumors [1-3,16-18,23,24].

Deregulated expression of ER in all phases of cell cycle

In normal breast tissue, ER α is expressed in quiescent (G₀) cells or early G₁ phase [1,17]. In MCF-7 cells, activation of ER α leads to cyclin D1 and myc expression, indicating the expression of ER α in G₁ phase [26]. Ki-67 is a proliferation marker expressed in late G₁, S, G₂, and M phases of the cell cycle [39]. In these ER α -positive breast cancer cell lines, most Ki-67-staining cells contained high levels of ER α suggesting that ER α might be present throughout the cell cycle progression in these cell lines (Fig. 1). To address this possibility, we evaluated the colocalization of ER α with the cyclins for different phases of cell cycle (cyclin D for G₁ phase; cyclin E for late G₁ phase; cyclin A for G₁/S/G₂ phases; cyclin B for M phase) [40-42]. The cyclins for the different phases of cell cycle were found colocalized with a proportion of ER α cells, with the cyclin A showing the largest and cyclin B the least proportion of ER α -stain-

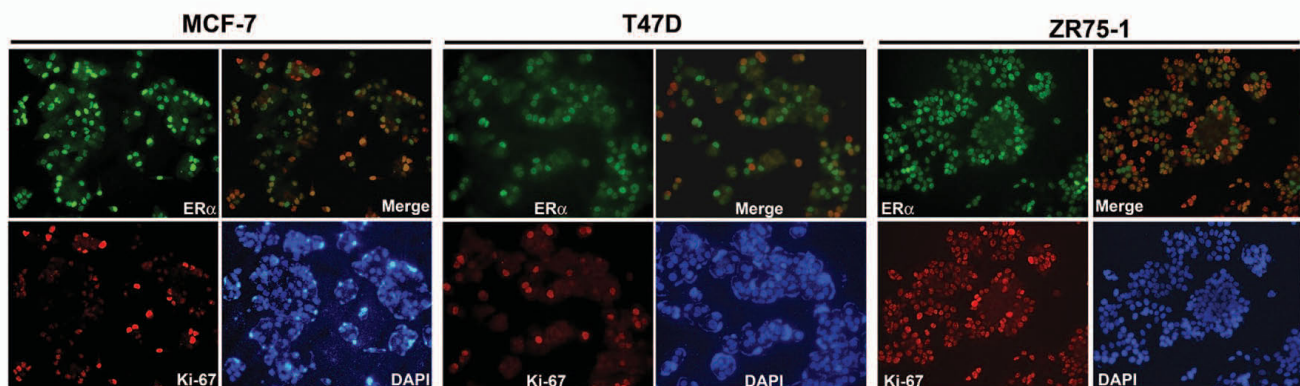


Figure 1

Colocalization of ER α and Ki-67 in ER α -positive breast cancer cell lines. MCF-7, T47D, and ZR75-1 cells were co-immunofluorescent stained for ER α (green) and Ki-67 (red). ER α -staining and Ki-67 staining were overlaid to show colocalization (Merge). Nuclei were stained with DAPI. Shown here are photographs of cells grown in phenol-red free DMEM/F12 containing 5% CD-FBS (200 \times magnification).

ing cells (Fig. 2A). Furthermore, flow cytometry analysis demonstrated that MCF-7 cells with high ER α expression (ER α^{high}) were distributed across G0/G1, S, and G2/M phases (Fig. 2B). These data indicate that ER α expression during cell cycle progression is deranged in MCF-7 cells.

E2 stimulation of ICI182780 treated cells induces expression of ER and Ki-67

While the distribution of ER α across all phases of cell cycling supports the autocrine mode of action in cell proliferation, it also raises the possibility that the colocalization of ER α with Ki-67 might be a coincidence. To further determine whether ER α can mediate cell proliferation in an autocrine mode, we sought to arrest the cells with the pure ER α antagonist ICI182780 followed by estrogen stimulation. When treated with ICI182780 for 72–96 hrs, no cell was observed with high ER α expression and only a few cells were stained with Ki-67, indicating that both ER α and Ki-67 were down-regulated by ICI182780 (Fig. 3). Consistently, ICI182780 treatment leads to cell cycle arrest at G1 phase (Fig. 3). The inhibitory effect of ICI182780 was observed similarly at concentrations from 10 nM to 50 nM, therefore 10 nM was selected for our later experiments.

To evaluate the effect of estrogen stimulation, cells were stimulated by adding E2 either after removal of ICI182780 or in the presence of ICI182780. We first evaluated the effect of estrogen stimulation after removal of ICI182780. MCF-7 cells were treated for ICI182780 for 72–96 hr and the treatment was stopped by washing with fresh serum-free medium to remove ICI182780. The cells were then stimulated with estrogen by adding medium containing 5 nM estrogen but without ICI182780. The control group of cells was replaced with medium without estrogen. In the cells stimulated with estrogen, both ER α and Ki-67 were induced with ER α and Ki-67 colocalized in most cells (Fig. 4A). In the control group of cells without estrogen stimulation, no high level of ER α or Ki-67 was observed although the cells were released from ICI182780 treatment. We also determined the effect of estrogen stimulation by adding estrogen directly to the cells still under ICI182780 treatment (Fig. 4B). The continuous presence of ICI182780 was to help minimize the secondary factors that might promote cell proliferation. Cells were treated with 10 nM ICI182780 for 72–96 hrs before the estrogen was added to the cells for a final concentration of 100 nM. Similar to the result shown in Fig. 4A, excessive estrogen stimulation in the presence of ICI182780 also induced the expression of high levels of ER α and Ki-67 with the two proteins colocalized in most cells (Fig. 4B). Collectively, these data indicate that activation of ER α by estrogen in ICI182780 arrested cells induces the expression of high levels of ER α and Ki-67

and their colocalization, supporting the autocrine mode of ER α action.

E2 stimulation releases cell cycle arrest by ICI182780 to promote cell cycle progression

We next examined the effect of estrogen stimulation on cell cycle progression. As described above, cells were stimulated with estrogen either after release from ICI182780, or estrogen was added at 10 fold higher concentration (100 nM E2) directly to cells without removing ICI182780 (10 nM ICI). Similar results were observed for either stimulation (Fig. 5, and data not shown). In cells stimulated with estrogen after release from ICI182780, most cells were still in the G1 phase until 24 hr after stimulation. At 44 hr after estrogen stimulation, about 45% of the cells were in S or G2/M phases, indicating that activation of ER α promotes the progressing of the cell cycle (Fig. 5). Interestingly, induction of high levels of ER α and Ki-67 appeared much earlier, with high levels of ER α appeared at around 6 hr. It is noteworthy that high levels of ER α appeared earlier than Ki-67, supporting that the activation of ER α is mediating the expression of Ki-67 and the cell cycle progression. These data indicate that the colocalization of ER α and Ki-67 is not a coincidence and support the hypothesis that activation of ER α can promote cell proliferation by autocrine regulation.

EGFR signaling is not required for the autocrine regulation of cell proliferation by ER

In the paracrine regulation of cell proliferation by ER α , EGFR signaling is required [20]. Therefore we evaluated whether EGFR signaling is required for the autocrine regulation of cell proliferation by ER α in MCF-7 cells. EGFR inhibitor Gefitinib was used to block EGFR signaling, 20 μ M of Gefitinib was chosen based on our preliminary experiments using a wide range concentrations of Gefitinib (1 μ M – 50 μ M) (Fig. 6D, and data not shown). We first evaluated whether Gefitinib treatment inhibits E2 stimulation induced expression and colocalization of ER α and Ki-67. MCF-7 cells were treated first with 10 nM ICI182780 for 72–96 hr, followed by adding the EGFR inhibitor Gefitinib to a final concentration of 20 μ M for 2 hr, then by adding estrogen to a final concentration of 100 nM. In the presence of ICI182780 and Gefitinib, estrogen stimulation still induced the expression and colocalization of ER α and Ki-67 (Fig. 6B). Conceivably, Gefitinib treatment does not inhibit estrogen stimulation induced cell cycle progression (Fig. 6C lower panel). In the control groups of MCF-7 cells treated with ICI182780 for 72–96 hr, ER α and Ki-67 were down-regulated and the cells remained at G1 phase (Fig. 6A, C upper panel). In the growth curve studies and the EGF stimulation experiments, Gefitinib at 20 μ M is sufficient to block EGFR signaling but not toxic to the cells (Fig. 6D, and data not shown). From these data, we concluded that EGFR signal-

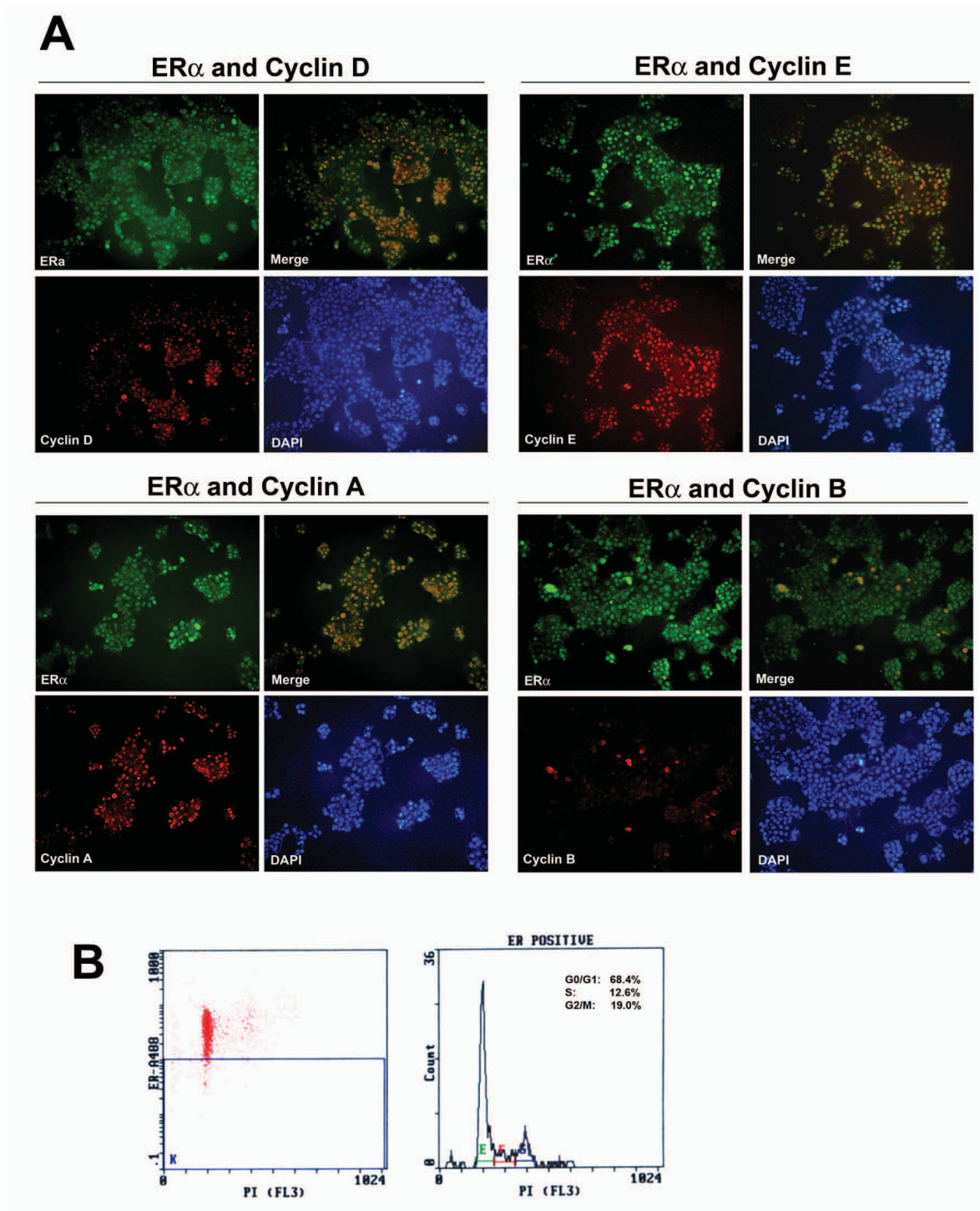


Figure 2
Deregulated expression of ER α in the cell cycle in MCF-7 cells. A, co-immunofluorescent staining for ER α (green fluorescence) and the major cyclins (D, E, A, and B) (red fluorescence). Cells were immunofluorescent stained with antibody for ER α and the antibody for one of the cyclins, followed by secondary antibody. Colocalization was shown by overlaying (Merge). Magnification, 200 \times . B, Flow cytometry analysis for the cell cycle distribution of ER α ^{high} cells (cells with high levels of ER α). Cells were stained with antibody for ER α followed by Alexa Fluor 488, and nuclear DNA was stained with propidium iodide (PI).

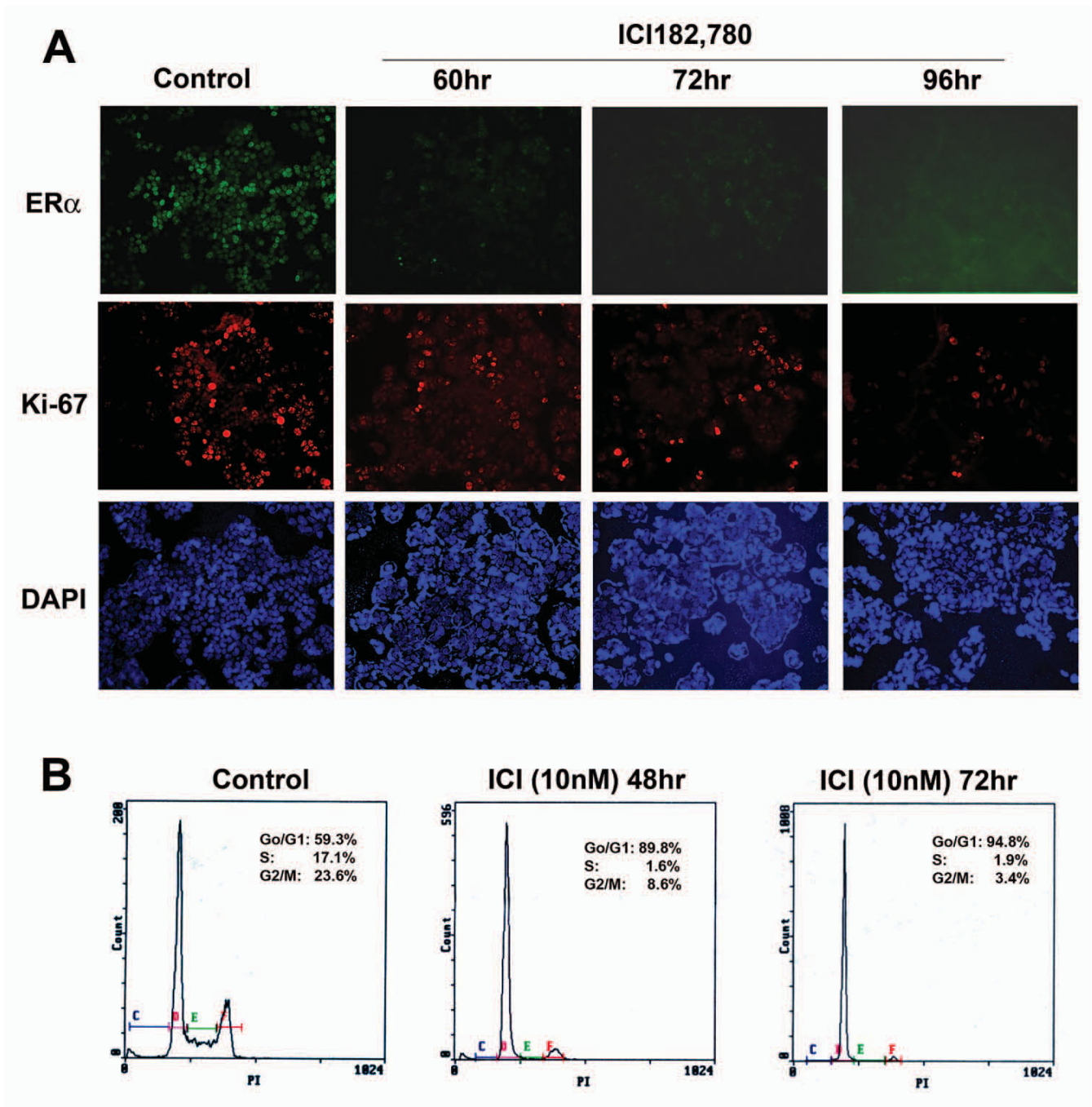
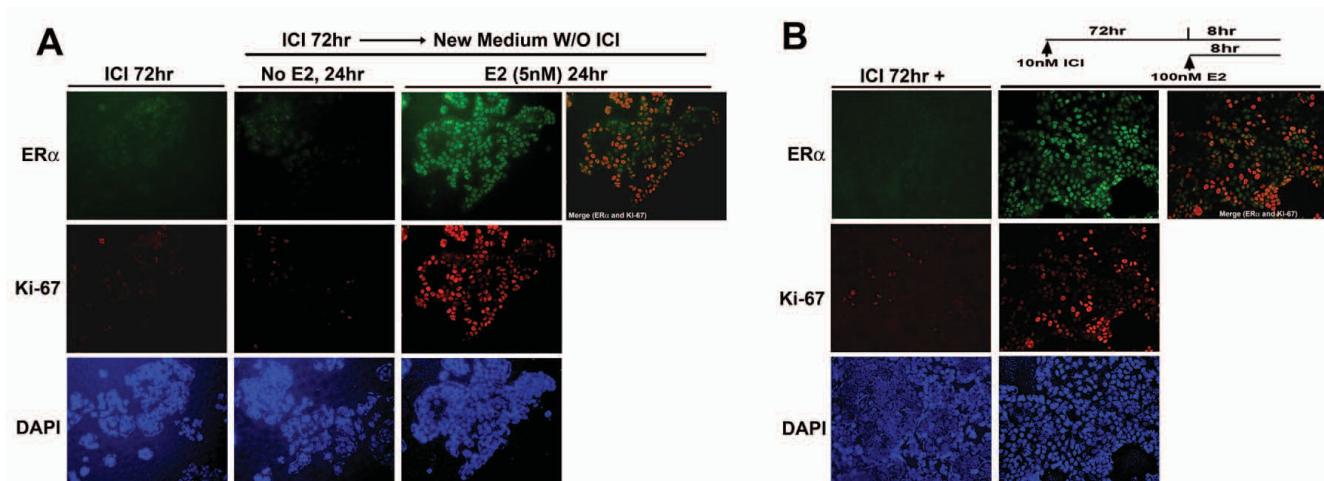


Figure 3
ICI182780 treatment of MCF-7 cells leads to ER α down-regulation and cell cycle arrest. A, Down-regulation of ER α by 10 nM ICI182780 treatment for 60–96 hrs. ER α and Ki-67 were evaluated by immunofluorescent staining, nuclei were stained with DAPI. Cells without ICI182780 treatment were used as control. Magnification, 200 \times . B, flow cytometry analysis of cell cycle distribution. Shown here is the cell cycle distribution of non-treated control cells, and cells treated with 10 nM ICI182780 for 48–72 hr. ICI182780 treatment was carried out in phenol-red free DMEM/F12 containing 5% CD-FBS.

**Figure 4**

E2 stimulation of ICI182780 treated cells induced the expression and colocalization of ER α and Ki-67. A, E2 stimulation of cells released from ICI182780 treatment. MCF-7 cells were treated with ICI182780 for 72–96 hr, then ICI182780 was removed by washing with serum-free medium. After removal of ICI182780, cells were treated by 5 nM E2 for 24 hr; control cells were replaced with medium without E2. Magnification, 200 \times . B, stimulation of E2 by adding E2 directly to cells under ICI182780 treatment. Cells were treated with 10 nM ICI182780 for 72–96 hr, then 100 nM E2 was added directly to the cells without removing ICI182780 for estrogen stimulation. The expression of ER α and Ki-67 was evaluated by immunofluorescent staining. Overlay of the ER α -staining and Ki-67 staining showed the colocalization (Merge). DAPI was used for nuclear staining. Magnification, 200 \times .

ing is not required for the autocrine action of ER α in mediating cell proliferation in MCF-7 cells.

Discussion

ER α is the primary estrogen receptor mediating the effects of estrogen in normal mammary epithelial cells [1-3,5-9,43]. In breast cancer, abnormal expression of ER α is found in about 70% of primary tumors [10,13]. Despite the significant role of ER α , the mechanism of how ER α mediates cell proliferation is not fully understood. The dissociation of ER α with cell proliferation markers such as Ki-67 in the normal mammary gland leads to the paracrine model of ER α -mediated cell proliferation. While colocalization of ER α and Ki-67 is rare in most primary breast cancers, there do exist some cancer cells in some primary breast tumors showing colocalization of ER α and Ki-67 suggesting the possibility of autocrine regulation. In this paper using the ER α -positive breast cancer lines, we presented data showing that most Ki-67 staining cells expressed high levels of ER α and that cells with high levels of ER α are distributed across different phases of cell cycle. We further demonstrated that activation of ER α in ICI182780 arrested cells can induce the expression and colocalization of high levels of ER α and Ki-67, and more importantly, the progressing of cell cycles from G1 phase to the G2/M phases. Collectively, our data support the hypothesis that ER α can mediate cell proliferation in an autocrine mode in these ER α -positive breast cancer cell lines.

Whether ER α mediates cell proliferation by autocrine and/or paracrine regulation is related to whether ER α -positive cells can proliferate or not. Inferred from the paracrine model is that ER α -positive cells are a separate subpopulation of cells that don't proliferate, or even further that ER α -positive cells cannot proliferate because ER α inhibits the proliferation of ER α -positive cells [1,3,44,45]. Although ER α is known to promote cell proliferation in ER α -positive breast cancer cell lines such as MCF-7, exogenous overexpression of ER α in some cell lines such as MDA-MB-231 and MCF-10A does inhibit cell proliferation [46-50]. The mechanism of how ER α mediates cell proliferation may have clinical implication for breast cancer etiology and therapy. Malignant transformation is a multistep process that involves different combination of genes at different stage of malignancy [51]. Distinct sets of ER α -target genes might be involved for the autocrine versus paracrine regulation and it will be interesting to examine whether the resistance to endocrine-related therapy is correlated with the mode of ER α action.

All the three ER α -positive cell lines used in our study showed colocalization of ER α and Ki-67. Since the number of established ER α -positive breast cancer cell lines is much less than expected from the expression frequency of ER α in primary breast tumors, we speculated that ER α -positive cell lines could only be established from cancer cells with autocrine regulation in the primary tumors [13,52]. In that case, what is known about the

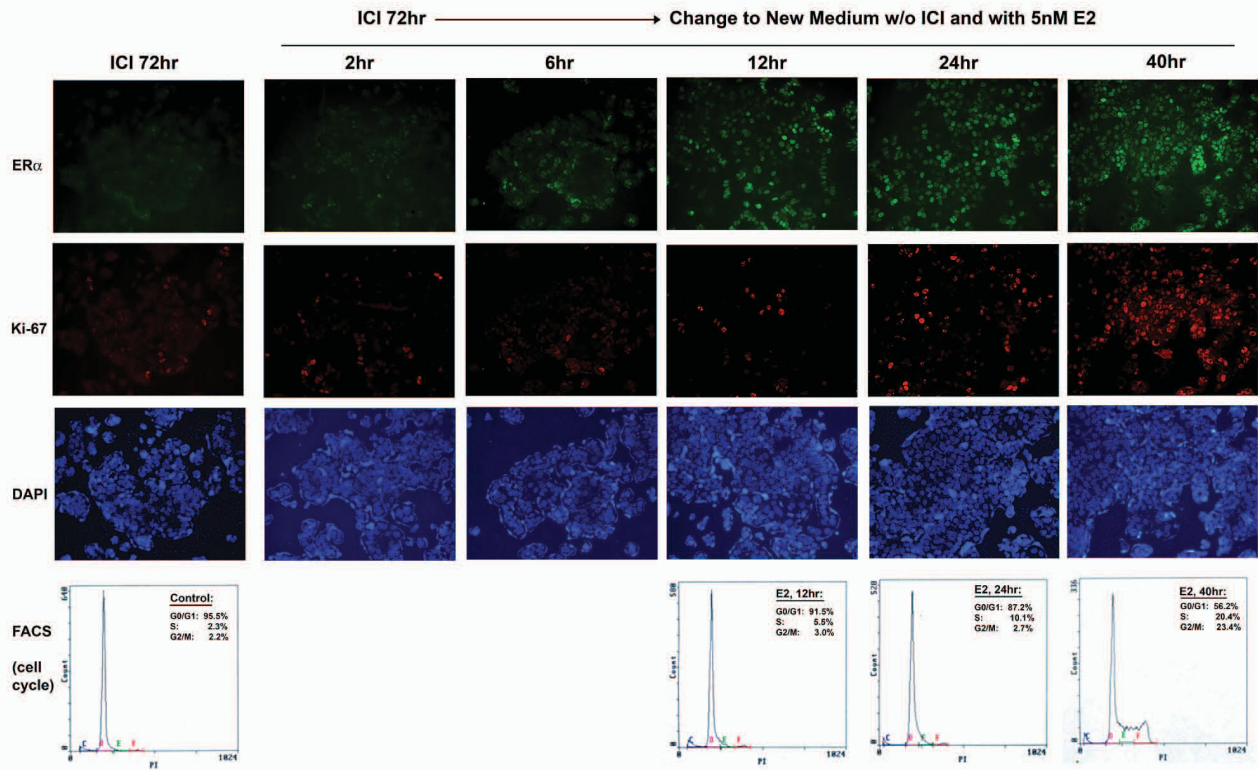


Figure 5
Time course of E2 induced expression of ER α and Ki-67 and cell cycle progression. MCF-7 cells were treated with ICI182780 for 72–96 hr and ICI182780 treatment was stopped by washing with serum-free medium. After removal of ICI182780, cells were treated with 5 nM E2 for various lengths of time (from 2 hr to 44 hr). Cells grown on coverslips were immunofluorescent stained for ER α and Ki-67. Nuclei were stained with DAPI. Cells grown on regular culture dishes were collected for PI staining and analyzed by flow cytometry for cell cycle progression. Magnification, 200 \times .

breast cancer from the studies using the ER α -positive breast cancer cell lines may not apply to all the ER α -positive primary breast tumors. It needs to point out that although our data support the autocrine mode of ER α action, it remains to determine whether both autocrine and paracrine modes of action by ER α are involved in these ER α -positive breast cancer cell lines. ER α is expressed in both the nucleus and cell surface in MCF-7 cells [53,54]. Based on the levels of membrane ER α , MCF-7 cells can be separated into two sub-populations, mER α -high and mER α -low [55,56]. The levels of nuclear ER α also showed heterogeneity in MCF-7 cells. It is not clear whether the heterogeneity of nuclear ER α levels is caused by the differential expression of ER α during cell cycle progression or by the heterogeneous sub-populations of cells. As demonstrated in ICI182780 treated cells, even extremely low or basal level of ER α can mediate some of the cellular response to estrogen. To determine whether paracrine regulation is involved or not, a subline of MCF-

7 with the ER α being completely shut off, i.e., eliminating the low basal level of ER α , will be needed to test their proliferation in response to estrogen when mixed with normal MCF-7 cells.

Together with the systemic hormones, growth factors are involved in mammary cell proliferation. EGFR signaling is essential for ER α -mediated cell proliferation in the normal mammary glands [20]. In MCF-7 cells, EGFR is involved in the non-genomic action of ER α and blocking of some EGFR activated pathways could inhibit ER α -mediated cell proliferation [33-36]. Our data, however, indicate that EGFR signaling is not required for the autocrine regulation of cell proliferation by ER α .

Conclusion

ER α can mediate estrogen-induced cell proliferation in an autocrine mode in ER α -positive breast cancer cell lines. All of the three ER α -positive cell lines used in our study

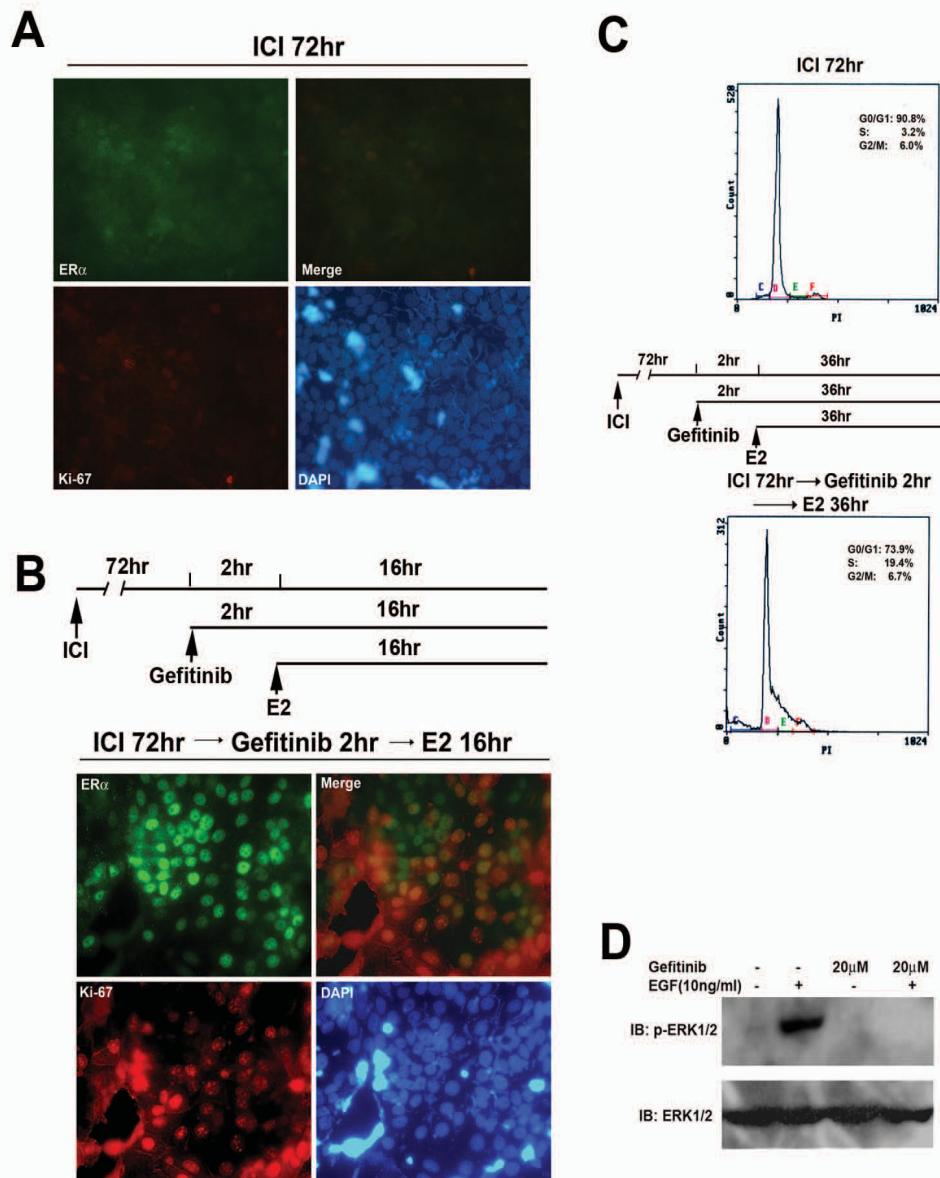


Figure 6

EGFR signaling is not required for the autocrine regulation of cell proliferation by ER α . A, MCF-7 cells treated with 10 nM ICI182780 for 72–96 hr, showing the down-regulation of ER α and Ki-67 by ICI182780 treatment. In A and B, ER α and Ki-67 were evaluated by immunofluorescent staining, nuclei were stained with DAPI. ER α -staining and Ki-67 staining were overlaid to show colocalization (Merge). Magnification, 400 \times . B, EGFR inhibitor Gefitinib does not inhibit E2 induced ER α and Ki-67 expression. MCF-7 cells were stimulated with 100 nM E2 in the presence of 10 nM ICI182780 and 20 μ M EGFR inhibitor Gefitinib. MCF-7 cells were treated first with 10 nM ICI182780 for 72–96 hr, followed by adding the EGFR inhibitor Gefitinib to a final concentration of 20 μ M for 2 hr, before adding estrogen to a final concentration of 100 nM for 16 hr. C, flow cytometry analysis of cell cycle progression, showing E2 stimulated cell cycle progression is not inhibited by Gefitinib. Upper panel, MCF-7 cells treated with ICI182780 for 72 hr. The cells were arrested at G1 phase. Lower panel, cell cycle progression was stimulated by 100 nM E2 in the presence of 10 nM ICI182780 and 20 μ M EGFR inhibitor Gefitinib. MCF-7 cells were treated first with 10 nM ICI182780 for 72 hr, followed by treatment with the Gefitinib (20 μ M) for 2 hr, before stimulation with 100 nM E2 for 36 hr. D, immunoblotting of phosphorylated ERK1/2, showing the inhibition of EGFR signaling by 20 μ M Gefitinib. MCF-7 cells were serum starved for 24 hr, followed by treatment with 20 μ M Gefitinib for 2 hr, before EGF stimulation for 5 min. The control group of cells was not treated with Gefitinib. Phosphorylation of ERK1/2 was used to assess the activation of the EGFR signaling.

showed colocalization of ER α and Ki-67, indicating that these cell lines might be originated from primary tumor cells with autocrine regulation. Considering that the number of established ER α -positive breast cancer cell lines is much less than expected from the percentage of ER α -positive primary breast tumors, we speculated that ER α -positive cell lines could only be established from cancer cells with autocrine regulation in the primary tumors. In that case, what is learnt about the breast cancer from the studies using the ER α -positive breast cancer cell lines may not apply to all the ER α -positive primary breast tumors.

Competing interests

The authors declare that they have no competing interests.

Authors' contributions

HT carried out most of the co-localization and cycle assays. YZ carried out the studies using EGFR inhibitor. ZZP was the principal investigator, contributed to the study conception, design and conduct, and writing of the manuscript. All authors read and approved the final manuscript.

Acknowledgements

This study is supported by the VCC/LCCRO (Vermont Cancer Center/ Lake Champlain Cancer Research Organization) funds to ZZ Pan.

References

- Clarke RB, Howell A, Potten CS, Anderson E: **Dissociation between steroid receptor expression and cell proliferation in the human breast.** *Cancer Res* 1997, **57**:4987-4991.
- Russo J, Ao X, Grill C, Russo IH: **Pattern of distribution of cells positive for estrogen receptor alpha and progesterone receptor in relation to proliferating cells in the mammary gland.** *Breast Cancer Res Treat* 1999, **53**:217-227.
- Shoker BS, Jarvis C, Clarke RB, Anderson E, Hewlett J, Davies MP, Sibson DR, Sloane JP: **Estrogen receptor-positive proliferating cells in the normal and precancerous breast.** *Am J Pathol* 1999, **155**:1811-1815.
- Speirs V, Skliris GP, Burdall SE, Carder PJ: **Distinct expression patterns of ER alpha and ER beta in normal human mammary gland.** *J Clin Pathol* 2002, **55**:371-374.
- Krege JH, Hodgin JB, Couse JF, Enmark E, Warner M, Mahler JF, Sar M, Korach KS, Gustafsson JA, Smithies O: **Generation and reproductive phenotypes of mice lacking estrogen receptor beta.** *Proc Natl Acad Sci USA* 1998, **95**:15677-15682.
- Forster C, Makela S, Warri A, Kietz S, Becker D, Hultenby K, Warner M, Gustafsson JA: **Involvement of estrogen receptor beta in terminal differentiation of mammary gland epithelium.** *Proc Natl Acad Sci USA* 2002, **99**:15578-15583.
- Bocchinfuso WP, Korach KS: **Mammary gland development and tumorigenesis in estrogen receptor knockout mice.** *J Mammary Gland Biol Neoplasia* 1997, **2**:323-334.
- Herynk MH, Fuqua SA: **Estrogen receptor mutations in human disease.** *Endocr Rev* 2004, **25**:869-898.
- Mallepell S, Krust A, Chambon P, Brisken C: **Paracrine signaling through the epithelial estrogen receptor alpha is required for proliferation and morphogenesis in the mammary gland.** *Proc Natl Acad Sci USA* 2006, **103**:2196-2201.
- Regan MM, Viale G, Mastropasqua MG, Maiorano E, Golouh R, Carbone A, Brown B, Suurkula M, Langman G, Mazzucchelli L, et al.: **Re-evaluating adjuvant breast cancer trials: assessing hormone receptor status by immunohistochemical versus extraction assays.** *J Natl Cancer Inst* 2006, **98**:1571-1581.
- Khan SA, Rogers MA, Khurana KK, Meguid MM, Numann PJ: **Estrogen receptor expression in benign breast epithelium and breast cancer risk.** *J Natl Cancer Inst* 1998, **90**:37-42.
- Khan SA, Rogers MA, Obando JA, Tamsen A: **Estrogen receptor expression of benign breast epithelium and its association with breast cancer.** *Cancer Res* 1994, **54**:993-997.
- Kuukasjarvi T, Kononen J, Helin H, Holli K, Isola J: **Loss of estrogen receptor in recurrent breast cancer is associated with poor response to endocrine therapy.** *J Clin Oncol* 1996, **14**:2584-2589.
- Frech MS, Halama ED, Tilli MT, Singh B, Gunther EJ, Chodosh LA, Flaws JA, Furth PA: **Deregulated estrogen receptor alpha expression in mammary epithelial cells of transgenic mice results in the development of ductal carcinoma in situ.** *Cancer Res* 2005, **65**:681-685.
- Tilli MT, Frech MS, Steed ME, Hruska KS, Johnson MD, Flaws JA, Furth PA: **Introduction of estrogen receptor-alpha into the tTA/TA conditional mouse model precipitates the development of estrogen-responsive mammary adenocarcinoma.** *Am J Pathol* 2003, **163**:1713-1719.
- Cheng G, Li Y, Omoto Y, Wang Y, Berg T, Nord M, Vihko P, Warner M, Piao YS, Gustafsson JA: **Differential regulation of estrogen receptor (ER)alpha and ERbeta in primate mammary gland.** *J Clin Endocrinol Metab* 2005, **90**:435-444.
- Cheng G, Weihua Z, Warner M, Gustafsson JA: **Estrogen receptors ER alpha and ER beta in proliferation in the rodent mammary gland.** *Proc Natl Acad Sci USA* 2004, **101**:3739-3746.
- Saji S, Jensen EV, Nilsson S, Rylander T, Warner M, Gustafsson JA: **Estrogen receptors alpha and beta in the rodent mammary gland.** *Proc Natl Acad Sci USA* 2000, **97**:337-342.
- Clarke R: **Complementary yet distinct roles for oestrogen receptor- α and oestrogen receptor- β in mouse mammary epithelial proliferation.** *Breast Cancer Res* 2004, **6**:135-136.
- Ciarloni L, Mallepell S, Brisken C: **Amphiregulin is an essential mediator of estrogen receptor alpha function in mammary gland development.** *Proc Natl Acad Sci USA* 2007, **104**:5455-5460.
- Shaaban AM, O'Neill PA, Davies MP, Sibson R, West CR, Smith PH, Foster CS: **Declining estrogen receptor-beta expression defines malignant progression of human breast neoplasia.** *Am J Surg Pathol* 2003, **27**:1502-1512.
- Shaaban AM, Sloane JP, West CR, Foster CS: **Breast cancer risk in usual ductal hyperplasia is defined by estrogen receptor-alpha and Ki-67 expression.** *Am J Pathol* 2002, **160**:597-604.
- Jarzabek K, Koda M, Kozlowski L, Mittre H, Sulkowski S, Kottler ML, Wolczynski S: **Distinct mRNA, protein expression patterns and distribution of oestrogen receptors alpha and beta in human primary breast cancer: correlation with proliferation marker Ki-67 and clinicopathological factors.** *Eur J Cancer* 2005, **41**:2924-2934.
- Jensen EV, Cheng G, Palmieri C, Saji S, Makela S, Van Noorden S, Wahlstrom T, Warner M, Coombes RC, Gustafsson JA: **Estrogen receptors and proliferation markers in primary and recurrent breast cancer.** *Proc Natl Acad Sci USA* 2001, **98**:15197-15202.
- Pedram A, Razandi M, Aitkenhead M, Hughes CC, Levin ER: **Integration of the non-genomic and genomic actions of estrogen. Membrane-initiated signaling by steroid to transcription and cell biology.** *J Biol Chem* 2002, **277**:50768-50775.
- Doisneau-Sixou SF, Sergio CM, Carroll JS, Hui R, Musgrove EA, Sutherland RL: **Estrogen and antiestrogen regulation of cell cycle progression in breast cancer cells.** *Endocr Relat Cancer* 2003, **10**:179-186.
- Musgrove EA, Sutherland RL: **Cell cycle control by steroid hormones.** *Semin Cancer Biol* 1994, **5**:381-389.
- Prall OW, Rogan EM, Musgrove EA, Watts CK, Sutherland RL: **c-Myc or cyclin D1 mimics estrogen effects on cyclin E-Cdk2 activation and cell cycle reentry.** *Mol Cell Biol* 1998, **18**:4499-4508.
- Sutherland RL, Prall OW, Watts CK, Musgrove EA: **Estrogen and progesterin regulation of cell cycle progression.** *J Mammary Gland Biol Neoplasia* 1998, **3**:63-72.
- Aakvaag A, Utaaker E, Thorsen T, Lea OA, Lahooti H: **Growth control of human mammary cancer cells (MCF-7 cells) in culture: effect of estradiol and growth factors in serum-containing medium.** *Cancer Res* 1990, **50**:7806-7810.
- Soto AM, Sonnenschein C: **Mechanism of estrogen action on cellular proliferation: evidence for indirect and negative control on cloned breast tumor cells.** *Biochem Biophys Res Commun* 1984, **122**:1097-1103.

32. Soto AM, Sonnenschein C: **The role of estrogens on the proliferation of human breast tumor cells (MCF-7).** *J Steroid Biochem* 1985, **23**:87-94.
33. Pedram A, Razandi M, Levin ER: **Nature of functional estrogen receptors at the plasma membrane.** *Mol Endocrinol* 2006, **20**:1996-2009.
34. Razandi M, Pedram A, Levin ER: **Plasma membrane estrogen receptors signal to antiapoptosis in breast cancer.** *Mol Endocrinol* 2000, **14**:1434-1447.
35. Razandi M, Pedram A, Park ST, Levin ER: **Proximal events in signaling by plasma membrane estrogen receptors.** *J Biol Chem* 2003, **278**:2701-2712.
36. Lobenhofer EK, Huper G, Iglehart JD, Marks JR: **Inhibition of mitogen-activated protein kinase and phosphatidylinositol 3-kinase activity in MCF-7 cells prevents estrogen-induced mitogenesis.** *Cell Growth Differ* 2000, **11**:99-110.
37. Pan ZZ, Bruening W, Giasson BI, Lee VM, Godwin AK: **Gamma-synuclein promotes cancer cell survival and inhibits stress- and chemotherapy drug-induced apoptosis by modulating MAPK pathways.** *J Biol Chem* 2002, **277**:35050-35060.
38. Pan ZZ, Bruening W, Godwin AK: **Involvement of RHO GTPases and ERK in synuclein-gamma enhanced cancer cell motility.** *Int J Oncol* 2006, **29**:1201-1205.
39. Scholzen T, Gerdes J: **The Ki-67 protein: from the known and the unknown.** *J Cell Physiol* 2000, **182**:311-322.
40. Johnson DG, Walker CL: **Cyclins and cell cycle checkpoints.** *Annu Rev Pharmacol Toxicol* 1999, **39**:295-312.
41. Caldon CE, Daly RJ, Sutherland RL, Musgrove EA: **Cell cycle control in breast cancer cells.** *J Cell Biochem* 2006, **97**:261-274.
42. Yam CH, Fung TK, Poon RY: **Cyclin A in cell cycle control and cancer.** *Cell Mol Life Sci* 2002, **59**:1317-1326.
43. Roger P, Sahlha ME, Makela S, Gustafsson JA, Baldet P, Rochefort H: **Decreased expression of estrogen receptor beta protein in proliferative preinvasive mammary tumors.** *Cancer Res* 2001, **61**:2537-2541.
44. Ewan KB, Oketch-Rabah HA, Ravani SA, Shyamala G, Moses HL, Barcellos-Hoff MH: **Proliferation of estrogen receptor-alpha-positive mammary epithelial cells is restrained by transforming growth factor-beta1 in adult mice.** *Am J Pathol* 2005, **167**:409-417.
45. Grimm SL, Rosen JM: **Stop! In the name of transforming growth factor-beta: keeping estrogen receptor-alpha-positive mammary epithelial cells from proliferating.** *Breast Cancer Res* 2006, **8**:106.
46. Abukhdeir AM, Blair BG, Brenner K, Karakas B, Konishi H, Lim J, Sahasranaman V, Huang Y, Keen J, Davidson N, et al.: **Physiologic estrogen receptor alpha signaling in non-tumorigenic human mammary epithelial cells.** *Breast Cancer Res Treat* 2006, **99**:23-33.
47. Jiang SY, Jordan VC: **Growth regulation of estrogen receptor-negative breast cancer cells transfected with complementary DNAs for estrogen receptor.** *J Natl Cancer Inst* 1992, **84**:580-591.
48. Barron-Gonzalez A, Castro Romero I: **Re-expression of estrogen receptor alpha using a tetracycline-regulated gene expression system induced estrogen-mediated growth inhibition of the MDA-MB-231 breast cancer cell line.** *Biochem Cell Biol* 2004, **82**:335-342.
49. Wang W, Smith R 3rd, Burghardt R, Safe SH: **17 beta-Estradiol-mediated growth inhibition of MDA-MB-468 cells stably transfected with the estrogen receptor: cell cycle effects.** *Mol Cell Endocrinol* 1997, **133**:49-62.
50. Briand P, Lundholt BK, Skouv J, Lykkesfeldt AE: **Growth response of breast epithelial cells to estrogen is influenced by EGF.** *Mol Cell Endocrinol* 1999, **153**:1-9.
51. Pan ZZ, Godwin AK: **ONCOGENES.** In *Encyclopedia of Molecular Cell Biology and Molecular Medicine Volume 9*. 2nd edition. Edited by: Meyers RA. Wiley-VCH Verlag GmbH & Co. KGaA, Weinheim; 2005:435-495.
52. Lacroix M, Leclercq G: **Relevance of breast cancer cell lines as models for breast tumours: an update.** *Breast Cancer Res Treat* 2004, **83**:249-289.
53. Razandi M, Pedram A, Greene GL, Levin ER: **Cell membrane and nuclear estrogen receptors (ERs) originate from a single transcript: studies of ERalpha and ERbeta expressed in Chinese hamster ovary cells.** *Mol Endocrinol* 1999, **13**:307-319.
54. Razandi M, Pedram A, Merchenthaler I, Greene GL, Levin ER: **Plasma membrane estrogen receptors exist and functions as dimers.** *Mol Endocrinol* 2004, **18**:2854-2865.
55. Zivadinovic D, Gametchu B, Watson CS: **Membrane estrogen receptor-alpha levels in MCF-7 breast cancer cells predict cAMP and proliferation responses.** *Breast Cancer Res* 2005, **7**:R101-112.
56. Zivadinovic D, Watson CS: **Membrane estrogen receptor-alpha levels predict estrogen-induced ERK1/2 activation in MCF-7 cells.** *Breast Cancer Res* 2005, **7**:R130-144.

Pre-publication history

The pre-publication history for this paper can be accessed here:

<http://www.biomedcentral.com/1471-2407/9/31/prepub>

Publish with **BioMed Central** and every scientist can read your work free of charge

"BioMed Central will be the most significant development for disseminating the results of biomedical research in our lifetime."

Sir Paul Nurse, Cancer Research UK

Your research papers will be:

- available free of charge to the entire biomedical community
- peer reviewed and published immediately upon acceptance
- cited in PubMed and archived on PubMed Central
- yours — you keep the copyright

Submit your manuscript here:
http://www.biomedcentral.com/info/publishing_adv.asp

