

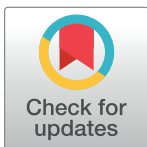
## CORRECTION

# Correction: A new archosauromorph from South America provides insights on the early diversification of tanystropheids

Tiane M. De-Oliveira, Felipe L. Pinheiro, Átila Augusto Stock Da-Rosa, Sérgio Dias-Da-Silva, Leonardo Kerber

[Fig 2](#) is incorrect. The scale bar should be 5 mm instead of 10 mm. The authors have provided a corrected version here. Please see the complete, correct [Fig 2](#) caption here.

The captions for [Figs 3](#) and [4](#) are incorrectly switched. The caption that appears with [Fig 3](#) should appear with [Fig 4](#), and the caption that appears with [Fig 4](#) should appear with [Fig 3](#). Please see the complete, correct [Figs 3](#) and [4](#) captions here.

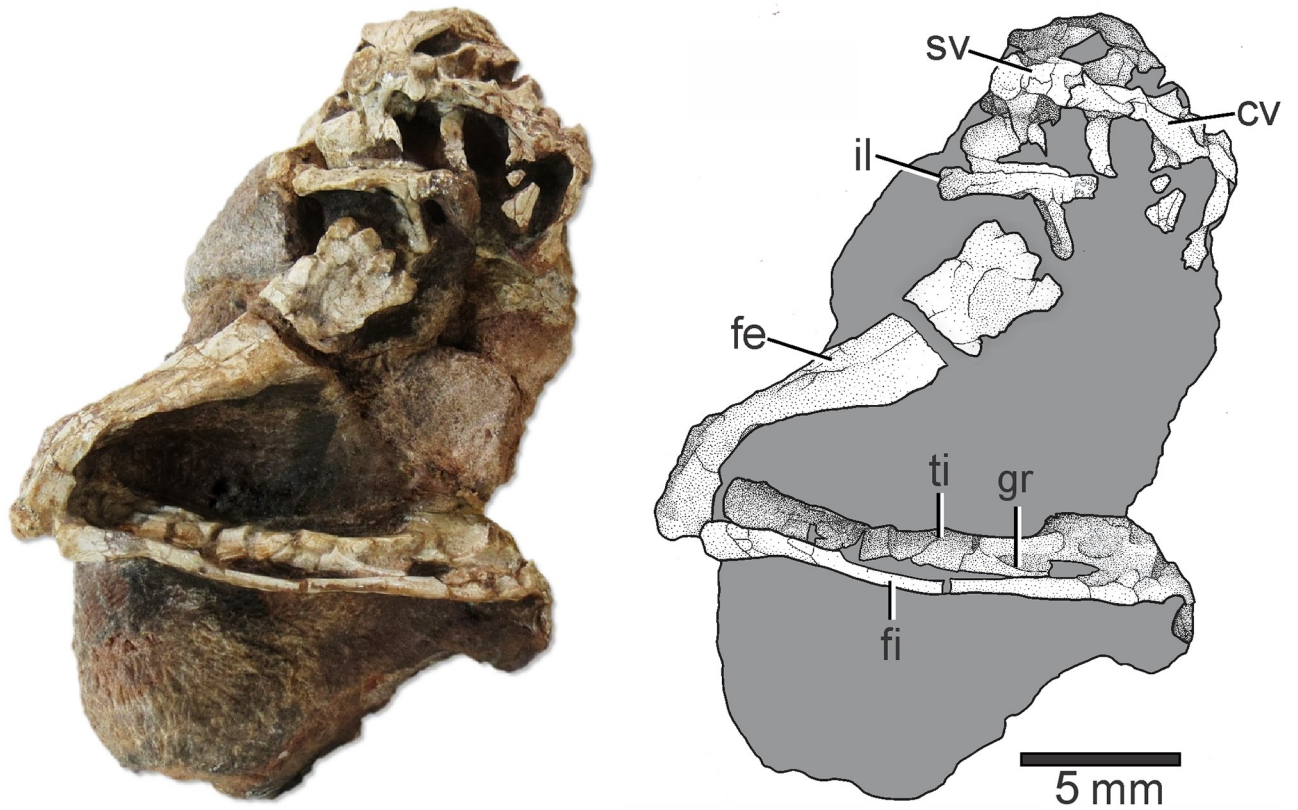


## OPEN ACCESS

**Citation:** De-Oliveira TM, Pinheiro FL, Stock Da-Rosa AA, Dias-Da-Silva S, Kerber L (2020) Correction: A new archosauromorph from South America provides insights on the early diversification of tanystropheids. PLoS ONE 15(5): e0233216. <https://doi.org/10.1371/journal.pone.0233216>

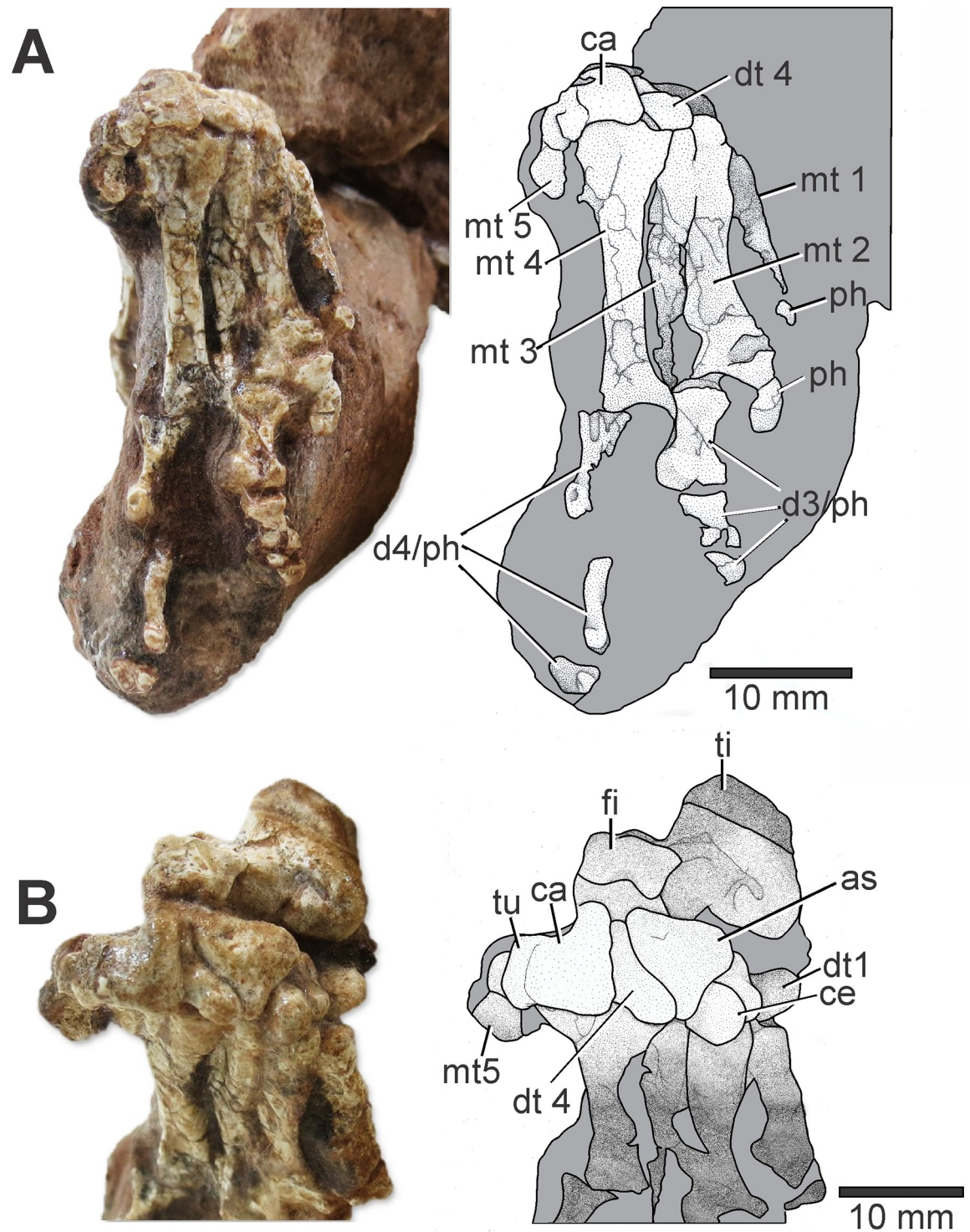
**Published:** May 11, 2020

**Copyright:** © 2020 De-Oliveira et al. This is an open access article distributed under the terms of the [Creative Commons Attribution License](https://creativecommons.org/licenses/by/4.0/), which permits unrestricted use, distribution, and reproduction in any medium, provided the original author and source are credited.



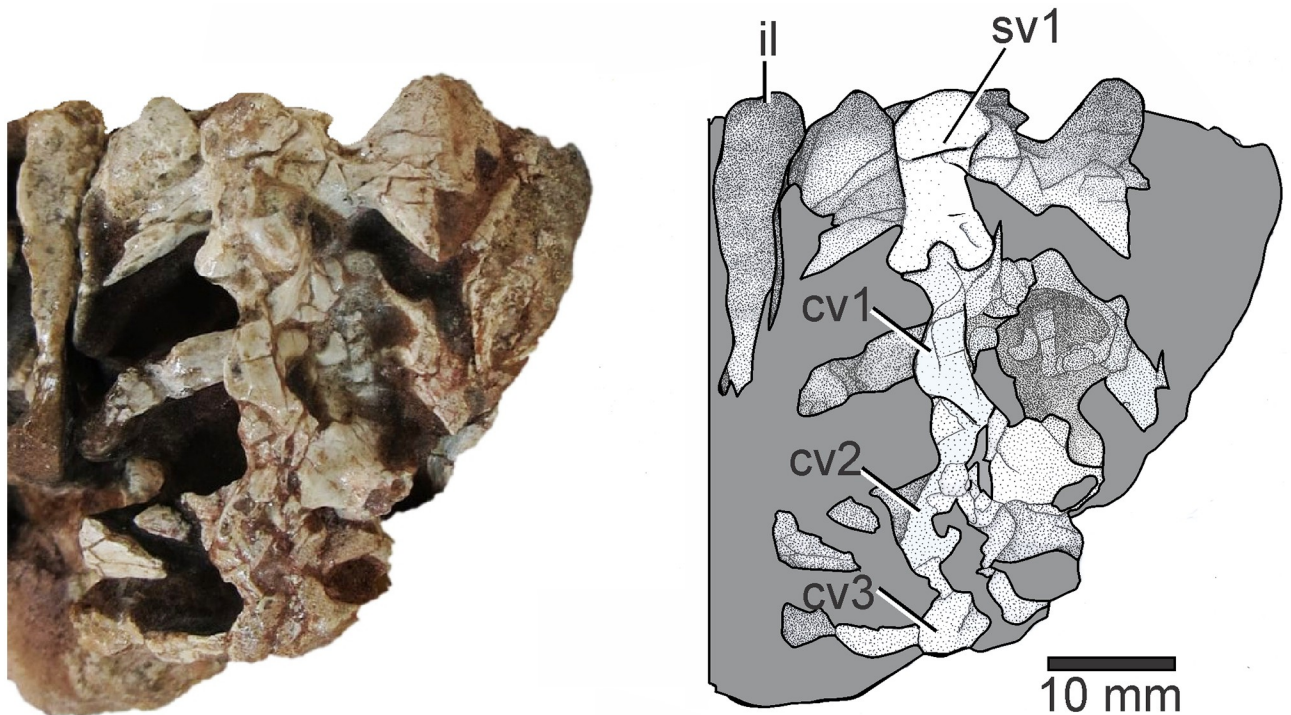
**Fig 2.** *Elessaurus gondwanoccidens* (UFSM 11471) from the Sanga do Cabral Formation (Lower Triassic), Brazil. Photograph and explanatory drawing respectively. Abbreviations: fe, femur; ti, tibia; gr, groove; fi, fibula; il, ilium; sv, sacral vertebra; cv, caudal vertebrae.

<https://doi.org/10.1371/journal.pone.0233216.g001>



**Fig 3. Plantar (A) and postero-plantar (B) views of the pes of *Elessaurus gondwanoccidens* (UFSM 11471) from the Sanga do Cabral Formation (Lower Triassic), Brazil.** Photographs and explanatory drawings respectively. Abbreviations (A): ca, calcaneum; dt 4, distal tarsal 4; mt, metatarsal 1–5; d3–d4, digits; ph, phalange. (B) ti, tibia; fi, fibula; ca, calcaneum; as, astragalus; tu, calcaneal tuber; mt, metatarsal 5; dt 1, distal tarsal 1; ce, centrale; dt 3, distal tarsal 3; dt 4, distal tarsal 4.

<https://doi.org/10.1371/journal.pone.0233216.g002>



**Fig 4. Sacral and caudal vertebrae of *Elessaurus gondwanoccidens* (UFSM 11471) in dorsal view.** Photograph and explanatory drawing respectively. Abbreviations: sv2, second sacral vertebra; cv, caudal vertebrae 1–3.

<https://doi.org/10.1371/journal.pone.0233216.g003>

## Reference

1. De-Oliveira TM, Pinheiro FL, Stock Da-Rosa AA, Dias-Da-Silva S, Kerber L (2020) A new archosauromorph from South America provides insights on the early diversification of tanystropheids. *PLoS ONE* 15(4): e0230890. <https://doi.org/10.1371/journal.pone.0230890> PMID: 32267850