

RESEARCH ARTICLE

Open Access

Tissue-specific patterns of gene expression in the epithelium and stroma of normal colon in healthy individuals in an aspirin intervention trial

Sushma S Thomas¹, Karen W Makar¹, Lin Li¹, Yingye Zheng¹, Peiyong Yang², Lisa Levy¹, Rebecca Yvonne Rudolph¹, Paul D Lampe¹, Min Yan³, Sanford D Markowitz³, Jeannette Bigler⁴, Johanna W Lampe¹ and John D Potter^{1*}

Abstract

Background: Regular aspirin use reduces colon adenoma and carcinoma incidence. UDP-glucuronosyltransferases (UGT) are involved in aspirin metabolism and clearance, and variant alleles in *UGT1A6* have been shown to alter salicylic acid metabolism and risk of colon neoplasia.

Methods: In a randomized, cross-over, placebo-controlled trial of 44 healthy men and women, homozygous for *UGT1A6**1 or *UGT1A6**2, we explored differences between global epithelial and stromal expression, using Affymetrix U133 + 2.0 microarrays and tested effects of 60-day aspirin supplementation (325 mg/d) on epithelial and stromal gene expression and colon prostaglandin E₂ (PGE₂) levels.

Results: No statistically significant differences in gene expression were observed in response to aspirin or *UGT1A6* genotype, but tissue PGE₂ levels were lower with aspirin compared to placebo ($p < 0.001$). Transcripts differentially expressed between epithelium and stroma ($N = 4916$, $P < 0.01$, false discovery rate < 0.001), included a high proportion of genes involved in cell signaling, cellular movement, and cancer. Genes preferentially expressed in epithelium were involved in drug and xenobiotic metabolism, fatty acid and lipid metabolism, apoptosis signaling, and ion transport. Genes preferentially expressed in stroma included those involved in inflammation, cellular adhesion, and extracellular matrix production. Wnt-Tcf4 pathway genes were expressed in both epithelium and stroma but differed by subcellular location.

Conclusions: These results suggest that, in healthy individuals, subtle effects of aspirin on gene expression in normal colon tissue are likely overwhelmed by inter-individual variability in microarray analyses. Differential expression of critical genes between colonic epithelium and stroma suggest that these tissue types need to be considered separately.

Keywords: Gene expression, Colon stroma, Colon epithelium, Microarray, Colon biopsy, *UGT1A6*, Aspirin

Background

Regular aspirin (acetylsalicylic acid) use reduces risk of colorectal cancer (CRC) mortality as well as incidence of CRC and adenomas [1-4]. Aspirin is hypothesized to exert its antineoplastic effects via several mechanisms. It may reduce risk of neoplasia by blocking synthesis of prostaglandin E₂ (PGE₂) through irreversible acetylation and by competitively inhibiting cyclooxygenase (COX)-1 and COX-2 [5]. Aspirin may also influence risk through COX-independent pathways, such as the DNA mismatch

repair system, epithelial cell proliferation and apoptosis, and antioxidant enzymes [6]. Aspirin reduces risk of sporadic colorectal adenomas within a few years but requires up to a decade to reduce risk of invasive cancer, suggesting that the effects of aspirin occur early in carcinogenesis or may even influence susceptibility of normal colonic tissue [4].

Aspirin treatment of colon cancer cell lines results in numerous changes in gene expression [7]. However, gene expression differences exist between colorectal tumor and normal epithelium [8-12] and colorectal tumor endothelial cells maintained in culture do not completely recapitulate expression patterns observed

* Correspondence: jpotter@fredhutch.org

¹Fred Hutchinson Cancer Research Center, Seattle, WA 98109, USA
Full list of author information is available at the end of the article

in vivo [13]. Therefore, it is likely that complex interactions between epithelium and stroma may be missed in simplified *in vitro* models of colon biology.

Previous studies designed to characterize the separate contributions of colonic stroma and colonic epithelium to carcinogenesis have focused on comparisons of tumor stroma to normal stroma, or tumor tissue to paired surrounding normal tissue [11,12,14,15]. Because these gene expression studies examined biopsy specimens from intact colon that were not dissected before analysis, the results were confounded by the contributions of multiple and heterogeneous cell types to overall expression signatures. More recently, a molecular pathway-based approach has been used to analyze the changes that occur during tumorigenesis [8]. Mojica and Hawthorn [16] have presented a data set of gene expression in normal colonic epithelial cells and compared them to a publicly available data set of tumor and matched normal colon data. However, to date, there has been no large-scale attempt to compare gene expression in colonic epithelium from normal healthy individuals to that in stroma from the same individuals or to evaluate the effects of potential preventive treatments on these different tissues.

Acetylsalicylic acid is rapidly deacetylated to salicylic acid, which is then further metabolized [17]. Glucuronidation of salicylic acid is an important pathway for elimination of the drug [17]. UGT1A6, a polymorphic UDP-glucuronosyltransferase (UGT), can conjugate salicylic acid [18]. Several studies suggest that the protein product of the *UGT1A6* variant allele has altered enzyme activity, which, in turn, affects aspirin metabolism [19-21]. Modifying effects of *UGT1A6* genotype have been reported in some studies of adenomas [22,23] but not others [24], and not in studies of colon cancer [25,26]. Independent of aspirin use, the *UGT1A6* variants have been reported to influence adenoma recurrence [27] and CRC risk [28].

The objectives of this study were to measure effects of an aspirin intervention on gene expression in normal colonic epithelial and stromal tissue in healthy humans and to determine whether response differed by *UGT1A6**2 genotype. We also sought to characterize gene expression differences within colonic tissue microenvironments by identifying genes that were differentially expressed between epithelial and stromal tissue.

Methods

Ethics statement

All study procedures and materials were approved by the Fred Hutchinson Cancer Research Center Human Research Protection Program, Institutional Review Board Committee C and informed, written consent was obtained from all participants prior to their starting the study.

Participants

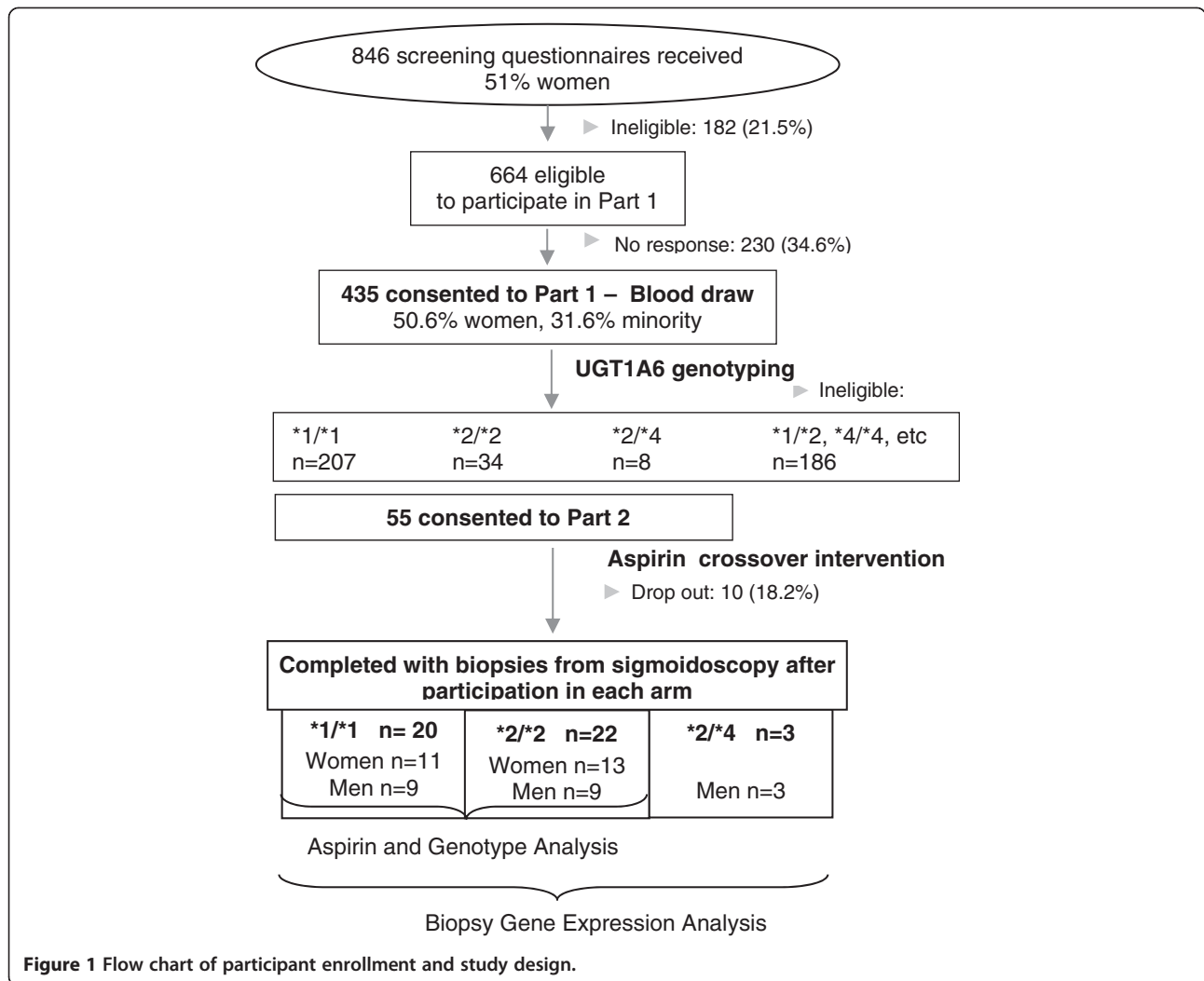
We recruited healthy men and women, ages 20 to 45 y, from the greater Seattle area between June 2003 and March 2007. Participants were recruited from among those who completed a cross-sectional study of diet and aspirin metabolism (Figure 1). Potential eligibility was assessed by questionnaire. Exclusion criteria included tobacco use, consumption of >2 alcoholic beverages/d (equivalent to 720 ml beer, 240 ml wine, 90 ml hard liquor), regular use of prescription or over-the-counter medications, known intolerance of aspirin or other non-steroidal anti-inflammatory drugs (NSAID), weight loss or gain of >4.5 kg in the past year, current or planned pregnancy, breastfeeding, bleeding disorder, anemia, renal insufficiency, hepatic dysfunction (e.g., cirrhosis, hepatitis, abnormal liver function tests), chronic lung disease, hypertension, congestive heart failure, angina, recent myocardial infarction, history of endocarditis, aortic or iliac aneurysm, history of stroke or transient ischemic attack, diabetes, recent pelvic surgery, history of gastrointestinal disorder (e.g., gastric or duodenal ulcer, ulcerative colitis, Crohn disease, celiac sprue, HNPCC, familial adenomatous polyposis, pancreatic disease, previous gastrointestinal resection, radiation or chemotherapy) and cancer (other than non-melanoma skin cancer).

As part of the cross-sectional study, participants completed a self-administered food frequency questionnaire and a health and demographic survey, and provided a fasting morning blood that was used for *UGT1A6* genotyping [29]. We determined the *UGT1A6**2 genotype of 434 participants by Sanger sequencing of a 268 bp fragment of exon 1, amplified by PCR as described previously [30].

Study design

The study was a randomized, double-blind crossover clinical trial designed to examine the effects of aspirin on gene expression in colonic mucosa. Our goal was to have at least 40 participants complete both arms of the trial. Participants were selected on the basis of their genotype of rs2070959 (T181A) and rs1105879 (R184S) – 20 with the *UGT1A6* *1/*1 genotype (homozygous for the major allele at both SNPs) and 20 with the *UGT1A6* *2/*2 genotype (homozygous for the minor allele at both SNPs). All participants with a *2/*2 genotype and sex-matched participants with a *1/*1 genotype were invited to consider participation in the trial. Additionally, 3 participants with the *2/*4 (T181A + R184S/R184S only) genotype were randomized.

To ensure that participants could take aspirin safely for 60 d and tolerate sigmoidoscopy, each participant underwent a clinical assessment before entering the study that included a detailed medical history, measurement of blood pressure and complete blood count, liver panel, chemistry



panel, blood urea nitrogen, serum creatinine, urinalysis, and in women only, a pregnancy test. In addition, a physician interviewed and examined participants before each of their sigmoidoscopies. The laboratory assays to assess the health of participants were completed by a commercial lab (CLIA licensed Quest Diagnostics, Seattle, WA).

Because this was a randomized crossover trial, each person served as his/her own control, receiving both intervention (aspirin) and control (placebo) at 2 different periods, with a washout period between periods. Participants were randomly assigned, blocked on sex and genotype, to the order in which they received aspirin or placebo. Eligible participants took 325 mg aspirin or a visually identical placebo by mouth daily, for 60 d. The washout period between intervention periods was 3 mo. A sigmoidoscopy was performed at least 60 d after day 1 of each intervention period. Participants took the study medication up until 24 h before their sigmoidoscopies. During each treatment period, we monitored adherence to the study medication by pill count.

Sigmoidoscopy, biopsy collection, and tissue separation

Participants prepared for sigmoidoscopy by following standard instructions for use of Fleet Phospho-soda Oral Saline Laxative (Lynchburg, VA), which included adherence to a clear-liquid diet for 24 h before the procedure. At each sigmoidoscopy, we used large-cup flexible biopsy forceps (Precisor Disposable, Bard, Billerica, MA) to obtain biopsies of normal-appearing mucosa from the sigmoid colon. Forty-five participants completed both sigmoidoscopies. Within 1 min of removal from the colon, three biopsies were transferred to Hank's buffer containing 20 mM EDTA and 40 mM dithiothreitol at 4°C and were held on ice for 10–15 min. The epithelial cells were separated from the stromal layer by vortexing [31]. The stromal layer was removed with an autoclaved toothpick and epithelial fraction was then collected by centrifugation. Both fractions were frozen and stored in liquid nitrogen until RNA extraction. Additionally, two biopsies were kept intact and frozen and stored in liquid nitrogen.

RNA extraction and microarray procedures

Each participant's epithelial and stromal samples were processed at the same time. Total RNA was extracted with RNeasy extraction kits (Qiagen, Valencia, California) and treated with DNase I according to the manufacturer's protocol. The integrity of total RNA samples was verified by visual analysis of 18S and 28S bands on an ethidium bromide-stained 1.5% agarose gel. RNA was quantified using the Quant-iT RiboGreen RNA assay Kit (Molecular Probes, Eugene, Oregon). We obtained sufficient RNA from 44 of the 45 participants. This resulted in obtaining total RNA from 88 epithelial samples and 88 matched stromal samples. cRNA was synthesized from 100 ng of total RNA, biotin-labeled by the GeneChip Two-cycle cDNA synthesis labeling protocol (Affymetrix, Inc., Santa Clara, California), and then hybridized to HGU133 plus 2.0 expression arrays. Each microarray contained 54,675 probes representing 38,500 genes. The quality control (QC) criteria used to assess sample and chip performance were fold-amplification after two cycles of *in vitro* transcription (to be at least 40-fold), and increasing signal strengths and 'present' calls for poly-A RNA spike-in controls (lys, phe, thr, dap) and hybridization controls (bioB, bioC, bioD and cre). Microarray data are publicly available in Gene Expression Omnibus (GEO) [32].

Real-time quantitative reverse transcription-polymerase chain reaction (qRT-PCR)

To validate the microarray data, Taqman RT-PCR was performed on a total of 20 RNA samples, which included both pairs of stromal and epithelial samples from 10 of the 44 individuals. To ensure an RT performance of equal quality, all samples were reverse transcribed simultaneously by a two-step reverse transcription with SuperScript RT II (Invitrogen, Carlsbad, California). Relative gene expression was examined by Taqman PCR using 2X Taqman Gene Expression Master Mix (Applied Biosystems, Foster City, California) and Taqman Gene Expression Assays for two epithelial genes (ABCC3, MLPH; assay identifiers Hs00358677_m1 and Hs00983106_m1) and two stromal genes (ITG α 8 and ANXA1; assay identifiers Hs00943530_m1 and Hs00945401_m1). Human β -glucuronidase (GUSB) was used as the normalization control based on its consistent expression across all samples in the microarray analysis. Relative quantification was performed with the ABI Prism 7900 HT sequence detection system and calculated by the comparative C_T method.

PGE₂ analysis

PGE₂ in whole biopsies collected at the end of each treatment period was measured with enzyme immunoassay kits from Assay Design (Farmingdale, NY). Briefly, each frozen biopsy tissue sample was transferred to a

sealed microcentrifuge tube to which 500 μ l of ice-cold tissue homogenization buffer had been added previously [33]. Each sample was homogenized by an Ultrasonic Processor (Misonix, Farmingdale, NJ) at 4°C for 3.5 min \times 2 with a 1-min rest in between and then centrifuged at 16,000 rpm for 5 minutes at 4°C. An aliquot (100 μ l) was mixed with 100 μ l of assay buffer and acidified with 20 μ l 1 N citric acid. The acidified solution was then applied to a Sep-Pak C18 cartridge (Waters Corp., Milford, MA) that had been preconditioned with methanol and water. Prostaglandins were eluted with 2 ml of hexane:ethyl acetate (1:1). The eluate was evaporated under a stream of nitrogen, and the residue was dissolved in 25 μ l ethanol and 200 μ l assay buffer. PGE₂ was then measured with ELISA kits according to the manufacturer's instructions. Protein levels were determined by a Bradford protein assay (Bio-Rad, Hercules, CA). Levels of PGE₂ were normalized to protein concentrations and expressed as ng/mg protein.

Data analysis

Microarray analysis

Data were normalized by the Robust Multi-array Analysis with correction for GC content of the oligo (GC-RMA) [34]. Subsequently, the probe-set expression levels were log₂-transformed. Nonspecific filtering was done where estimated intensities were required to be above 100 fluorescence units in at least 25% of the samples and the interquartile range (IQR) across all of the samples on the log base 2 scale was expected to be at least 0.6. A total of 6227 genes passed nonspecific filtering. Differential expression between tissue types in biopsies collected at the end of each treatment period was determined by using a paired t-test. The false discovery rate (FDR) was calculated using the procedure proposed by Benjamini and Hochberg [35]. Visualization of the statistically significant genes was performed in GeneSpring 7.0 with per chip and per gene normalizations (Agilent Technologies, Wilmington, Delaware). Ingenuity Pathways Analysis (IPA, Release Summer 2013) (Ingenuity Systems, Redwood City, California, <http://www.ingenuity.com>) was used to determine the relevant functions and pathways expressed in each tissue type. A list of the top genes in each pathway was identified using GeneSpring and heat maps for each pathway were generated by clustering these genes in Gene Cluster 3.0 [36] and then visualizing the clusters using Java TreeView [37]. Differential expression between interventions within each tissue type and between two *UGT1A6* genotypes (*1/*1 and *2/*2) were also examined by using the same paired t-test and the generalized estimating equation approach. Genes that were statistically significantly differentially expressed between stroma and epithelium at the end of both treatment periods were included in further pathway analysis.

PGE₂ analysis

Because the distributions of PGE₂ levels measured in biopsies collected at the end of each treatment period were skewed, the data were logarithmically transformed. The difference between treatments was determined by using paired t-test and a random-effects model that takes into account the crossover design. The comparison between aspirin and placebo was further examined after stratification for sex, age, and *UGT1A6* genotypes.

Results

Fifty-five individuals (23 men), mean (SD) age 30.1 (6.5) y, were randomized. Ten participants discontinued the study: 3 did not tolerate the Fleets Phospho-soda preparation prior to the first sigmoidoscopy, 2 started on prescription medications, 2 refused sigmoidoscopy, 3 left for reasons unrelated to the study and sufficient total RNA could not be extracted from one participant. Forty-two participants were included in the analysis of intervention and *UGT1A6* genotype effects (Table 1) and an additional 3 participants with the *UGT1A6* *2/*4 genotype were included in the expression array analysis of stromal and epithelial tissue. (Initially, we randomized *2/*4 individuals into the study because the phenotype was thought to be

similar to that of *2/*2; however, with the emergence of new data [38], we decided that the 2 genotypes may be sufficiently different and therefore excluded *2/*4 individuals from the intervention analysis).

Tissue-specific patterns of gene expression in epithelium and stroma of normal human colon

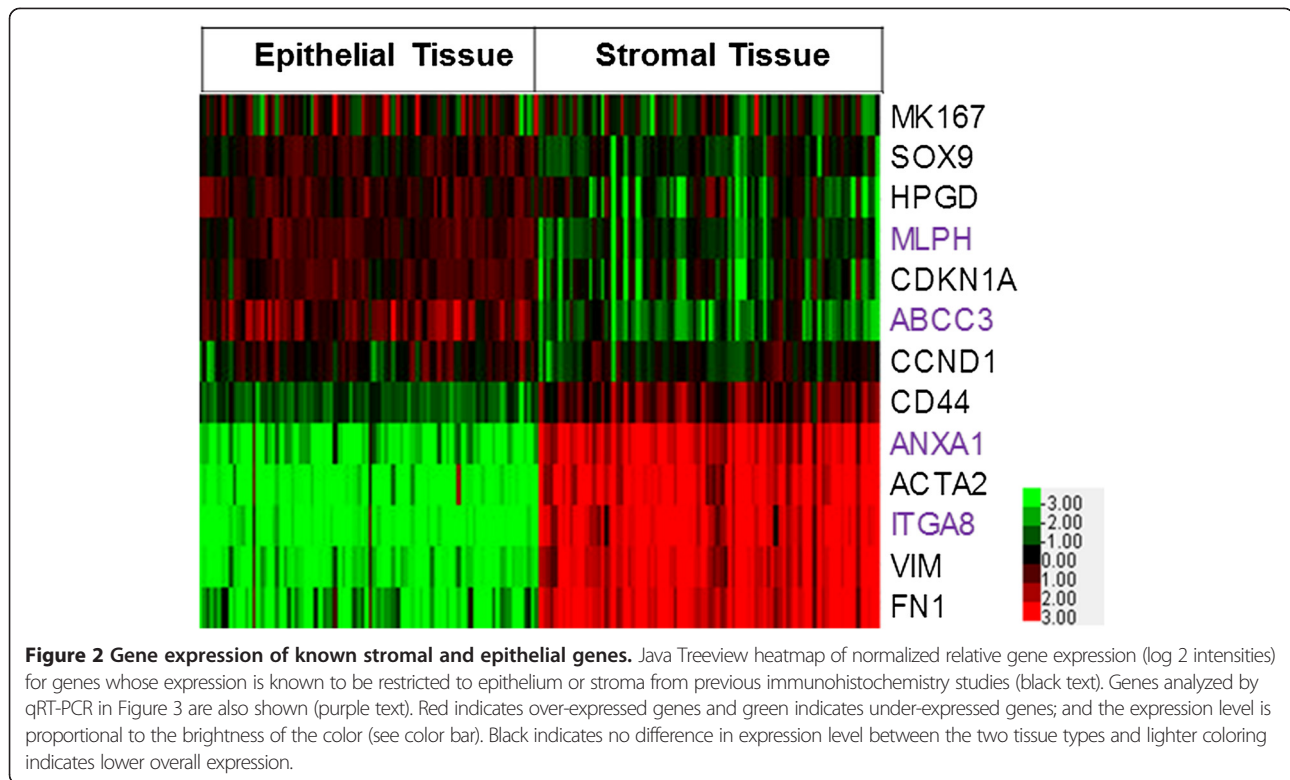
From 38,500 genes analyzed by microarray, we identified genes that were statistically significantly differentially expressed between epithelium and stroma in each treatment period. Because there were no intervention differences (see below), we combined the observations and restricted subsequent analyses to those genes that were differentially expressed in both treatment periods ($P < 0.01$, FDR < 0.001). This resulted in further exploration of 4916 genes. Of these, 2088 were higher in stroma and 2828 were higher in epithelium. The entire list of statistically significant genes and their expression values is available in Additional file 1.

Separation of stromal and epithelial layers was verified by examining genes that are known to be expressed in epithelium or stroma from immunohistochemistry staining in multiple studies (Figure 2). Expression of α -smooth muscle actin (ACTA2), vimentin (VIM), and

Table 1 Characteristics of participants included in the analysis of the effects of aspirin and *UGT1A6* genotype on gene expression in colonic epithelium and stroma

	UGT1A6*1/*1		UGT1A6*2/*2	
	Men n = 9	Women n = 11	Men n = 9	Women n = 13
Age, years (SD)	30.0 (4.65)	30.9 (5.8)	30.2 (5.6)	29.7 (7.8)
Height, cm (SD)	180.9 (5.6)	168.5 (7.2)	179.0 (7.8)	163.2 (8.0)
Weight, kg (SD)	83.6 (8.4)	69.0 (12.0)	88.2 (26.5)	71.3 (15.5)
BMI, kg/m ² (SD)	25.6 (2.6)	24.2 (3.2)	27.5 (7.8)	26.7 (5.2)
Minority, n (%)	2 (22.2)	3 (27.3)	3 (33.3)	2 (15.4)
Race n (%)				
Caucasian	6 (66.7)	6 (54.6)	6 (66.7)	11 (84.6)
Asian	1 (11.1)	1 (9.1)	2 (22.2)	1 (7.7)
African-American	0	1 (9.1)	0	0
Other	2 (22.2)	3 (27.2)	1 (11.1)	1 (7.7)
Family history of CRC, n (%)	0 (0.0)	1 (9.1)	1 (11.1)	0 (0.0)
Take supplements, n (%)	3 (33.3)	2 (18.2)	4 (44.4)	6 (46.2)
Ever smoked n (%)	1 (11.1)	3 (27.3)	1 (11.1)	1 (7.7)
Energy, kcal/d (SD)	1495 (373)	1468 (474)	1770 (459)	1505 (361)
Fruit, servings/d (SD)	1.3 (1.0)	1.9 (0.9)	2.5 (1.8)	2.9 (2.3)
Vegetables, servings/d (SD)	1.5 (1.2)	2.3 (1.2)	1.7 (1.0)	2.6 (2.1)
Caffeine mg/d (SD)	68 (92)	76 (60)	125 (147)	118 (71)
Calcium mg/d (SD)	926 (508)	760 (373)	782 (267)	773 (406)
Fat g/d (SD)	57 (20)	56 (20)	67 (29)	46 (20)
Dietary fiber, g/d	15.9 (8.3)	15.5 (5.6)	19.2 (9.0)	20.4 (8.4)

Abbreviations: CRC, colorectal cancer; SD, standard deviation. Asterisks are used as part of the specific classification of the *UGT1A6* genotype.



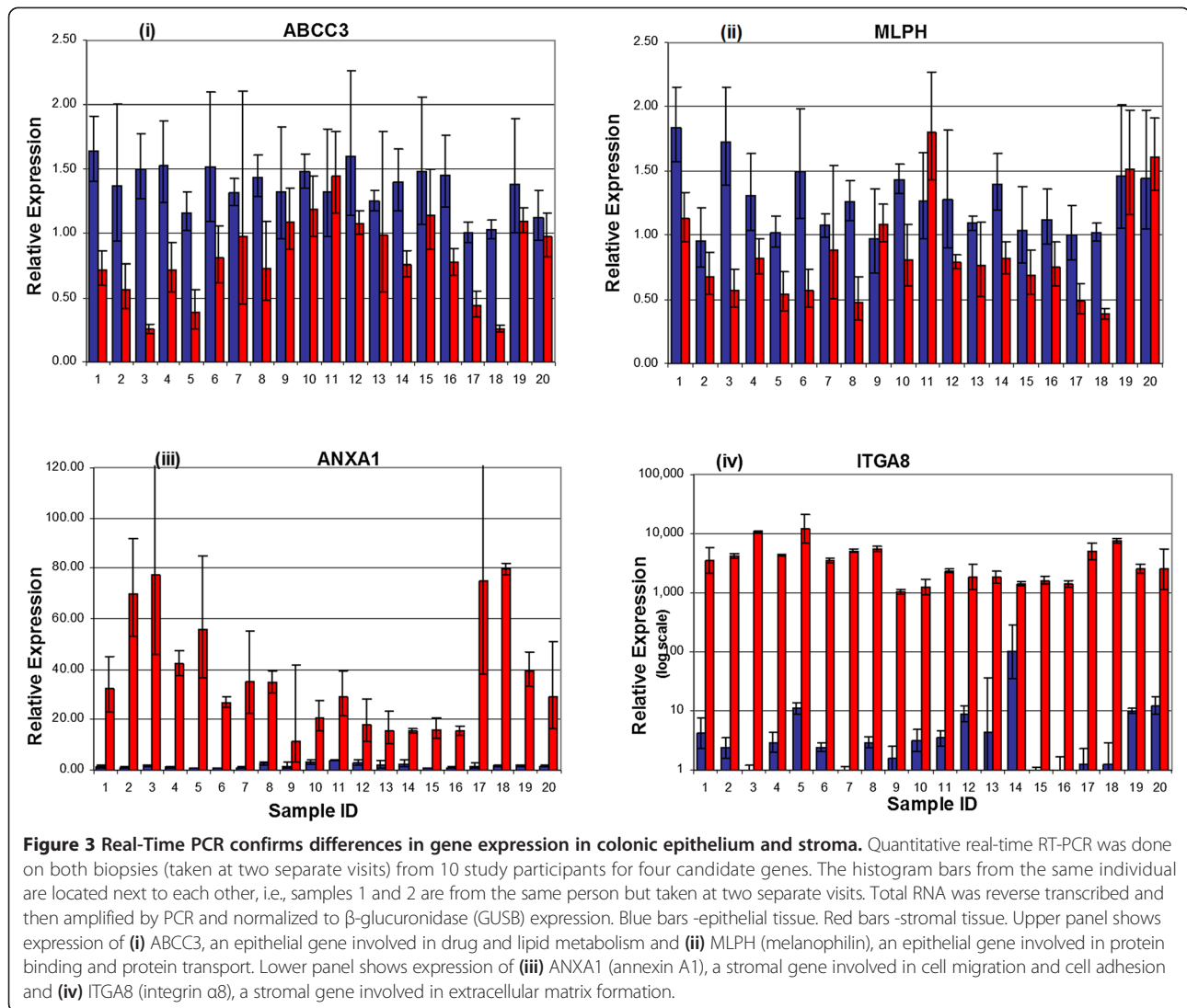
fibronectin (FN1) was restricted to the stromal compartment, which is consistent with the known expression of these genes specifically in pericryptal myofibroblasts [39-42]. Conversely, expression of cyclin D1 (CCND1), p21 (CDKN1A), and 15-PGDH (HPGD) has been observed consistently in the top portion of the crypts [11,43-47] and this correlated with the higher expression observed in our epithelial samples. For genes known to be expressed in the crypt base such as CD44, SOX9, and Ki-67 [44,47-51], our data revealed that SOX9 and Ki-67 (MKI67) showed higher expression in the epithelial fraction, whereas CD44 showed higher expression in the stromal fraction. Stromal and epithelial patterns of expression observed in the microarray data were confirmed by qRT-PCR of selected genes (Figure 3). Expression of the selected epithelial-specific genes, ABCC3 and MLPH1, was detectable in the stromal samples, but at a lower level than in the epithelial samples. In contrast, the selected stromal-specific genes, ANXA1 and ITGA8, generally lacked detectable expression in the epithelial samples.

To understand the biologic processes represented by differentially expressed genes, we analyzed those showing statistically significant differences with Ingenuity Pathways Analysis (IPA). Although both compartments expressed genes involved with cancer, cell death, cell signaling and cellular movement, several pathways and biologic functions appeared to be unique to one or the other tissue. Table 2 lists the major differentially expressed pathways and functions by tissue type.

Lipid metabolism and small molecule biochemistry

Lipid metabolism and small-molecule-biochemistry pathways were highly represented in epithelial tissue. Several of the genes highly expressed in epithelium were categorized as being involved in the accumulation, biosynthesis, metabolism, and modification of fatty acids and lipids. For example, ACADVL and DECR2 are involved in modification of lipids; CYP3A4 is involved in modification and beta-oxidation of fatty acids; FAAH and PPARA with catabolism and degradation of fatty acids; and CYP51A1 in the biosynthesis of cholesterol. Additional file 2 depicts the expression pattern in epithelium and stroma of the top 25 (determined by p-values associated with differential expression) genes in the category of lipid metabolism.

Within the category of lipid metabolism, the prostaglandin pathway was well represented. Expression of HPGD, PTGDR, and PTGES2 was higher in the epithelium; in contrast, expression of PTGS1 (COX-1), PGDS, and PTGER2 was higher in the stroma (see Additional file 3). The expression of COX-1 is constitutive in normal tissue unlike COX-2 (PTGS2), the expression of which is induced only in inflamed tissue or cancer [52]. COX-2 expression was not detected in either stroma or epithelium. HPGD is known to be highly expressed in normal colonic epithelial cells near the top of the crypt and has been shown to block the prostaglandin-synthesizing activity of COX-2 [43].



Molecular transport

Genes such as CLIC5, CLCN2 (chloride transport), KCNK5 (potassium channel family 5), SLC12A2 (K^+/Cl^- transporter), SLC9A2 (sodium/hydrogen exchanger), SLC26A3 (chloride anion exchanger), and SCNN1B (involved in the flux of Na) (see Additional file 4) were all more highly expressed in the epithelial fraction. In contrast, the majority of stromal-specific molecular transport genes, such as VCAM1, CAV1, ITGB2, chemokine receptors and ligands, were in the categories of Ca^{2+} flux, quantity, and mobilization (data not shown).

Drug and xenobiotic metabolism signaling

Consistent with previously published data [9,10], our results showed that this critical pathway was highly expressed in the colonic epithelium; relevant genes included ABCC3, a member of the MRP family of multi-drug-resistance genes, UGT1A1, UGT1A6, GSTA1, GSTT1, GSTO2 (members of

the Phase II conjugating enzyme family), MAOA (monoamine oxidase A), CYP3A5 (involved in oxidation of testosterone), and members of the sulfotransferase family (SULT1A1, 1A2, 1A3 and 1B1) (see Additional file 5). Not all gene expression related to drug and xenobiotic-metabolism signaling was confined to the epithelium, however: members of the GST mu family (GSTM1, M2, and M3) were upregulated in the stroma as was MAOB, a gene known to have high activity in lymphocytes and platelets [53].

Inflammation and immune response

Genes involved in inflammation, angiogenesis, wound healing, and immune responses were highly expressed in the stromal compartment (see Additional file 6); these included genes encoding cytokine receptors (IL10RA), chemokines and chemokine receptors (CCL18, CCR2), inflammatory mediators (C4A), growth factors (CSF1),

Table 2 Statistically significant pathways and functions in colonic epithelium and stroma

	Epithelial genes	p-value
Canonical pathways	Xenobiotic Metabolism signaling	0.000124
	Fatty acid Metabolism	0.00262
	<i>Apoptosis Signaling</i>	0.22
Biological function	Lipid Metabolism	6.25E-07-2.47E-02
	Small Molecule Biochemistry	6.25E-07-2.47E-02
	Molecular Transport	5.89E-05-2.47E-02
	<i>Carbohydrate Metabolism</i>	7.48E-04-2.47E-02
	<i>Drug Metabolism</i>	1.80E-03-2.47E-02
	<i>Protein trafficking</i>	2.34E-03-2.47E-02
	<i>Nucleic acid Metabolism</i>	8.58E-03-2.47E-02
	<i>Amino acid Metabolism</i>	1.23E-02-2.47E-02
	Stromal genes	p-value
Canonical pathways	<i>Complement System</i>	2.49E-08
	<i>Antigen Presentation Pathway</i>	0.00000018
	IL-4 signaling	0.0000656
Biological function	Inflammation	8.74E-28-8.17E-06
	Cell-to-cell signaling	1.90E-27-1.09E-05
	<i>Immunological Disease</i>	5.34E-25-4.44E-06
	Hematological System Development & Function	4.50E-19-1.12E-05
	Immune Response	4.50E-19-1.12E-05

Ingenuity Pathway Analysis of selected biological functional groups and metabolic and signaling pathways for all statistically significant genes of both tissue types. Range of p-values indicates the significance values of the specific sub-functions associated with that particular high-level function. *Italic font indicates function was unique to that particular tissue type and was essentially not expressed in the other tissue.*

and adhesion proteins (PECAM1). This immune-related expression pattern represents the major canonical pathways unique to the stroma and reflects the presence of multiple cell types including lymphocytes, monocytes, and endothelial cells.

Extracellular matrix and cell adhesion

Matrix modeling and extracellular matrix (ECM) genes were expressed preferentially in the stroma. A search of IPA for “Extracellular Matrix” matched 29 functions with 399 associated molecules. Of these, 80 were expressed preferentially in the stroma and 40 were expressed preferentially in the epithelium. ECM genes, collagen types III and V (COL3A1 and COL5A1), decorin (DCN), dystrophin (DMD), lumican (LUM), and TIMP1 were expressed in stroma, along with laminins LAMA2, LAMA4, LAMB1 and LAMC1 (see Additional file 7). Laminins LAMA3 and LAMC2, had higher expression in the epithelial fraction, along with LAMA1. This is similar to the expression pattern seen in the small intestine [10], where the laminin A chain is predominantly associated with differentiated epithelial cells [54]. Henesin (DMBT1) showed higher expression in the epithelium, which is consistent with its role in the formation of columnar epithelium [10].

Wnt- β -catenin pathway

The Wnt- β -catenin pathway plays an important role in epithelial-stromal cell development and differentiation [55,56]. The roles of Wnt and β -catenin in colon carcinogenesis are well established [57,58]. Wnt pathway-related genes were identified from the Ingenuity database. Among the 4916 statistically significant genes, two distinct tissue-specific patterns of Wnt-related genes were observed, with 21 genes expressed more highly in the epithelium and 21 genes expressed more highly in the stroma (see Additional file 8). The genes preferentially expressed in epithelium encoded cytoplasmic Wnt pathway-associated proteins whereas secreted proteins (e.g., DKK3, Wnt5A, and Wnt5B) were expressed preferentially in stroma. Components of several other signaling pathways (MAPK, TGF- β , IL-1, IL-6) as well as tight-junction signaling, were represented in both epithelium and stroma (data not shown).

Aspirin and UGT1A6 genotype effects on gene expression and PGE₂ levels in colon biopsies

There was no effect of aspirin treatment or UGT1A6 genotype on gene expression in stromal or epithelial tissue as measured by microarray. The distributions of p-values for these comparisons were no different from those under

the null hypothesis and none of the estimated FDRs was less than 0.3 (data not shown).

In contrast, we found statistically significant effects of the aspirin intervention on PGE₂ levels in colon tissue. PGE₂ concentrations were approximately 40% lower after aspirin compared to placebo (0.17 ± 0.10 and 0.32 ± 0.22 ng/mg protein, respectively). The intervention effect was statistically significant ($p < 0.001$) both with and without adjusting for age, sex, and genotype, but there was no modifying effect of genotype on the response to aspirin.

Discussion

It is well established that colonic neoplastic tissue is epithelial in origin; however, the surrounding stroma is also believed to play an active role in this process, albeit a less well studied one [59,60]. There is evidence that changes in stromal tissue contribute to carcinogenesis and that tumorigenic epithelial cells can induce changes in stromal fibroblasts [61]. There is also increasing evidence that tumor cells actively recruit stromal cells, such as inflammatory cells, vascular cells, and fibroblasts, into the tumor [13,62]. Thus, the tissue microenvironment and communication between these two tissues play an important role in tumor-cell proliferation and in progression [15,63]. Although many factors have been identified as stromal signals [41], the pathways involved in this intercellular 'cross-talk' are only partly understood. Differential gene sets and biological pathway characterization to study tumorigenesis [8] and to classify molecular subtypes in colon cancer [64] have greatly contributed towards our understanding of colon cancer heterogeneity.

Here, we present, for the first time, a large-scale study of tissue-specific gene expression patterns in normal human colon from healthy individuals. Separation of epithelial and stromal fractions was confirmed through the analysis of genes known to be restricted to either stroma or epithelium from previous immunohistochemistry studies. Good corroboration was seen between gene expression and immunohistochemistry studies (Figure 2). CD44, which is expressed in the crypt base, showed higher expression in the stroma than in the epithelium. This could indicate that epithelial cells at the crypt base remained partially attached to the stromal fraction, i.e., that the cell separation primarily removes the luminal epithelial cells but did less well with the more basal cells. Equally, however, the strong expression of immune-related genes in the stroma (see Additional file 6) could suggest that CD44 expression by hematopoietic cells is the cause of higher relative expression in the stroma.

Our quantitative RT-PCR assay results suggest that the technique used to separate epithelium from stroma resulted in a relatively clean and homogeneous epithelial fraction. Specifically, we observed little to no expression of the two stromal genes in the epithelial samples (Figure 3).

However, as noted, the stromal fraction expressed detectable amounts of both of the examined epithelial genes, albeit at lower levels than the epithelium.

Our results both corroborate and contrast with other studies of gene expression in the colon. Genes involved in the accumulation, biosynthesis, metabolism, and modification of fatty acids and lipids were highly represented in the epithelium (see Additional file 2), consistent with exposure of the epithelial cells to the colonic lumen and the uptake of nutrients, including short-chain fatty acids, produced by colonic bacterial fermentation of fiber and other carbohydrates. Additionally, as noted in Table 2, protein trafficking, amino acid, nucleic acid, and carbohydrate metabolism were also represented more in epithelial tissue. The prostaglandin pathway is of particular interest for colorectal carcinogenesis [65,66] as it is a main target of NSAIDs. Colorectal tumors also express high prostaglandin levels [65,66]. As shown in Additional file 3, patterns of expression of these genes were seen in both epithelium and stroma but differed between them.

Our data are also consistent with previously published data showing that colonic epithelium expresses genes associated with ion transport of Na⁺, Cl⁻, H⁺, K⁺, Cu²⁺ and other heavy metals, as well as genes necessary for the metabolism of xenobiotics and drugs (see Additional files 4 and 5) [9,10]. We observed that the molecular-transport genes expressed more highly in the stroma were associated with Ca²⁺ transport. This separation of ion transport function is consistent with the role of epithelial cells in water absorption and electrolyte transport and the use of Ca²⁺ signaling by cells in the stromal compartment, including hematopoietic cells [67,68].

Sugiyama et al. [11] found increased expression of genes involved in angiogenesis, invasion/metastasis in cancer stroma compared with normal stroma. Our data showed that the genes involved in invasion/metastasis, such as TIMP1 and MMP1, also show higher expression in normal stroma than in epithelium (see Additional files 6 and 7). Several of the tumor endothelial markers observed by St. Croix and colleagues [13] such as CTGF, MGP, COL5A1, VWF, and nidogen (NID1) were also more highly expressed in stroma in our study, again showing that endothelial and angiogenesis-related factors are characteristic of normal stroma.

Saaf et al. [69] reported that IL10RB and IL6 had higher expression in polarized Caco-2 epithelial cells (which mimic colonic epithelial cell differentiation). In contrast, we observed an extensive list of genes involved in inflammation and immune response in stroma but not in epithelium, thereby providing additional evidence for differences between normal intact tissue behavior and that of transformed cells in culture.

Mariadason et al. [9] reported increased expression of ECM components during Caco-2 cell differentiation.

Halleib et al. [10] also found genes encoding ECM components to be regulated during Caco-2 cell polarization. In contrast to these *in vitro* studies, however, and consistent with the inflammatory-gene data above, we found that several ECM components (collagens, laminins, fibulin, fibronectin) were specifically expressed in stroma, suggesting that, whereas the Caco-2 *in vitro* model mimics the epithelial absorptive cell lineage differentiation, those cells do not mirror the expression patterns observed in normal human colonic epithelium and stroma. This, plausibly, could result from lack of interaction between Caco-2 cells (which are derived from tumor and hence far removed from any normal cell) and a normal stromal milieu. Our results clearly suggest caution in interpreting observations from *in vitro* models of tissue development that lack the characteristics of the *in vivo* tissue micro-environment and, specifically, the complex mix of cells that characterize the normal colonic stroma.

Constitutive activation of Wnt/ β -catenin signaling is an early event in the development of colorectal carcinomas in humans [55,70]. The Wnt/wingless pathway has a probable morphostatic role because of its control of epithelial-cell proliferation and differentiation along the crypt-villus axis [59]. The Wnt signaling pathway was also one of the top canonical pathways associated with the differentially expressed gene list generated from the comparison of tumor to normal cells in the work of Mojica and Hawthorn [16]. Our observation that some Wnt pathway and target genes are specific to stroma whereas others are expressed more highly in epithelium was intriguing, so we investigated the subcellular localization of the Wnt pathway genes in the stroma and epithelium by using IPA (see Additional file 9). More of the secreted proteins showed higher expression in the stroma whereas higher expression of the cytoplasmic proteins was seen in the epithelium. Our results suggest that the stroma is the major source of soluble factors related to the Wnt pathway within the colon. These data allow further dissection of the contribution that these important pathways make in establishing a healthy tissue micro-environment in the colon.

We looked at the 4 different colon cancer molecular subtypes described by Perez-Villamil et al. [64] and compared their differential gene sets characterizing each tumor subtype with our stromal and epithelial differential gene expression data. We found that, 33% of genes belonging to their cluster-2 (Immunoglobulin-related-subtype) and 51% of their cluster-3 (High-stroma-subtype) showed higher expression in our stromal data set versus 4% and 0%, respectively, in our epithelial data set. Genes belonging to their cluster-4 (Mucinous-subtype) showed higher expression in our epithelial fraction. Of the genes that showed lowest expression in cluster-1 (low-stroma-subtype), 11 were expressed more highly in our epithelial

dataset (includes metallotheioneins and carboxymetallo-peptidase M) and 38 (mixture of mostly immune-system-related genes as well as some apolipoproteins) showed higher expression in our stromal data set.

Mojica and Hawthorn [16] have presented a reference data set of gene expression in normal colonic epithelial cells and compared it to tumor and matched normal colon. However, they note that adjacent normal tissue is highly heterogeneous and not always representative of normal colon cells. Our gene analysis of normal healthy colon epithelium and stroma adds considerable value when used in conjunction with their differential-gene-expression study. Furthermore, genes identified as being down-regulated in colorectal adenoma compared to normal mucosa were differentially expressed between stroma and epithelium in our study, providing additional evidence that changes during carcinogenesis occur in both epithelial and stromal tissue [71].

In this study of healthy men and women, we did not detect statistically significant differences in gene expression with aspirin treatment, as measured by microarray of normal colon tissue. However, the differences we observed in tissue PGE₂ levels between aspirin treatment and placebo provide support for a dose and duration sufficient to elicit a response *in vivo*. Previously, we showed in the same study, that aspirin treatment did not change expression of 15-hydroxyprostaglandin dehydrogenase (15-PGDH)—the enzyme that catabolizes PGE₂ by oxidizing its 15(s)-hydroxy group—suggesting that aspirin does not affect PGE₂ levels through modulation of 15-PGDH [72]. Given the observation that, in normal colonic tissue, Cox-1 contributes to the majority of PGE₂ production [73], inactivation of Cox-1 by aspirin's acetylation of strategically located serine residues [74] is likely a primary mechanism of reduced PGE₂. In humans, aspirin doses as low as 81 mg/d were sufficient to significantly lower PGE₂ in colorectal mucosa [75]. Similarly, Bousserouel et al. [76] showed that aspirin supplementation reduced both normal mucosal PGE₂ concentrations and aberrant crypt foci by approximately 50% in rats treated with azoxymethane.

Several technical and logistical aspects of the study may have made it more difficult to detect subtle changes in gene expression in response to aspirin. The Fleet Phospho-soda Oral Saline Laxative may have changed gene expression in the colon cells to a greater degree such that any effects of aspirin could not be detected. We might have expected this to have less effect on the underlying stromal component; however, no effect was seen in this tissue sub-type either. Further, we relied on 2-cycle amplification, which may have contributed more variation in transcript levels and reduced our capacity to detect any aspirin-related differences. A limitation of this study is the selection of participants based solely on

their UGT1A6*2 genotypes with no screening or selection for polymorphisms in other genes involved in aspirin metabolism, such as CYP2C9 and ACSM2 [17,22,77]. We also selected only younger healthy adults and the study was not designed for long-term follow-up. However, the American Cancer Society recently reported that, although CRC incidence rates have declined by 3.7% per year from 2006–2010 among adults 50 years and older, they have increased by 1.8% per year among adults younger than 50 years. This observation suggests that a large population-based study in younger adults may be warranted.

Conclusions

We conducted a comprehensive study of differential gene expression between normal human colonic epithelium and stroma from healthy individuals. We have identified the genes uniquely and reproducibly expressed in each tissue type and have analyzed the biologic processes they represent. The wide differences in expression between stroma and epithelium suggest that future study of gene expression in colonic epithelium may benefit from separation of the tissue so as to focus the analysis on a specific tissue type.

Additional files

Additional file 1: List of 4916 statistically significant genes and their expression values. There are 4 samples from each person designated A1-A4 (person 1); A5-A6 (person 2); B1-B4 (person 3) etc. to W1-W4 (person 44). Within each person, odd numbers (1 & 3) are epithelial tissue and even numbers (2 & 4) are stromal tissue. The epithelial and stroma from each intervention period are paired together (e.g., A1 & A2 are from period 1; A3 & A4 are from period 2). *Note: The type of intervention linked to each period is masked. Please contact the study authors directly if you would like access to this information.* Microarray data are publicly available in Gene Expression Omnibus (GEO).

Additional file 2: Expression of lipid metabolism genes in colonic epithelium and stroma. Top 25 genes involved in lipid metabolism (by p-value) that showed higher expression in epithelial tissue compared to the corresponding stromal tissue. Red indicates over-expressed genes and green indicates under-expressed genes; and the expression level is proportional to the brightness of the color (see color bar). Black indicates no difference in expression level between the two tissue types and lighter coloring indicates lower overall expression.

Additional file 3: Expression of prostaglandin pathway genes in colonic epithelium and stroma. Heatmap of relative expression of selected statistically significant genes involved in the prostaglandin pathway. Relative expression levels ranged from bright green (lowest) to bright red (highest). Black indicates no difference in expression level between the two tissue types and lighter coloring indicates lower overall expression.

Additional file 4: Expression of molecular transport genes in colonic epithelium and stroma. The heatmap of relative expression of selected statistically significant genes involved in molecular transport showed higher expression in epithelium compared to stroma. Heatmap relative expression levels ranged from bright green (lowest) to bright red (highest). Black indicates no difference in expression level between the two tissue types and lighter coloring indicates lower overall expression.

Additional file 5: Expression of genes in the drug and xenobiotic metabolism pathway in colonic epithelium and stroma. The heatmap of relative expression of selected statistically significant drug and xenobiotic metabolism genes demonstrated higher expression in epithelium for the

majority of genes. Relative expression levels ranged from bright green (lowest) to bright red (highest). Black indicates no difference in expression level between the two tissue types and lighter coloring indicates lower overall expression.

Additional file 6: Stroma-specific expression of inflammation and immune response genes in biopsy samples of human colon. The heatmap of selected statistically significant genes involved in inflammation and immune response showed the strong stroma-specific expression of immune-related genes. Relative expression levels ranged from bright green (lowest) to bright red (highest). Black indicates no difference in expression level between the two tissue types and lighter coloring indicates lower overall expression.

Additional file 7: Expression of extracellular matrix genes in colonic stroma and epithelium. Twenty-five matrix modeling and extracellular matrix genes (10 epithelial genes and 15 stromal genes) with different levels of expression in epithelium compared with stroma. (Relative expression levels range from bright green (lowest) to bright red (highest). Black indicates no difference in expression level between the two tissue types and lighter coloring indicates lower overall expression.

Additional file 8: Wnt-Tcf4 pathway gene expression in colonic epithelium and stroma. Heatmap of all statistically significant Wnt target and pathway genes identified from the Wnt homepage and IPA and Genespring databases. Two distinct tissue-specific expression patterns were observed – see Discussion and Additional file 9. Relative expression levels ranged from bright green (lowest) to bright red (highest). Black indicates no difference in expression level between the two tissue types and lighter coloring indicates lower overall expression.

Additional file 9: Cellular location of the products of 42 Wnt genes that were preferentially expressed by stroma or epithelium. Ingenuity Pathway analysis was used to analyze the cellular location of differentially expressed genes. Genes associated with production of secreted proteins (e.g., DKK3, Wnt5A and Wnt5B) were expressed preferentially in stroma. Genes associated with production of cytoplasmic proteins were expressed preferentially in epithelium.

Abbreviations

AGT: Angiotensinogen; COX: Cyclooxygenase; CRC: Colorectal cancer; ECM: Extracellular matrix; FDR: False discovery rate; GO: Gene Ontology; IPA: Ingenuity pathway analysis; LOH: Loss of heterozygosity; MHC: Major histocompatibility complex; NSAID: Non-steroidal anti-inflammatory drug; PGDH: Prostaglandin dehydrogenase; PGE₂: Prostaglandin E₂; UGT: UDP-glucuronosyltransferase.

Competing interests

The authors declare that they have no competing interests.

Authors' contributions

JB, JL, PL, and JP conceived of and designed the study. LLevy and RR were responsible for participant recruitment, study management and biopsy collection. ST carried out RNA extractions, microarray processing, and generated data visualization figures. PY, MY, and SM conducted the PGE₂ analyses. ST, KM, LLevy, LLi, YZ, contributed to the data analysis. ST, KM, JL drafted the manuscript, and JP revised and approved the final version. All authors read and approved the final manuscript.

Acknowledgements

This work was supported by US NIH R01 CA094954, R01 CA112516, P50 CA150964, U54 CA163060, and Fred Hutchinson Cancer Research Center. We thank the participants in our study and the CB Fleet Company, Inc., which generously provided the Fleet® Phospho-soda® Oral Saline Laxative preparations. We also thank Dr. Jeff Delrow and the Genomics facility at Fred Hutchinson Cancer Research Center for the hybridization and scanning of all microarrays.

Author details

¹Fred Hutchinson Cancer Research Center, Seattle, WA 98109, USA. ²M.D. Anderson Cancer Center, Houston, TX 77030, USA. ³Case Western Reserve University School of Medicine, Cincinnati, OH 44106, USA. ⁴Amgen Corporation, Seattle, WA 98119, USA.

Received: 8 October 2014 Accepted: 26 February 2015

Published online: 24 March 2015

References

- Flossmann E, Rothwell PM. Effect of aspirin on long-term risk of colorectal cancer: consistent evidence from randomised and observational studies. *Lancet*. 2007;369:1603–13.
- Rothwell PM, Wilson M, Elwin CE, Norrving B, Algra A, Warlow CP, et al. Long-term effect of aspirin on colorectal cancer incidence and mortality: 20-year follow-up of five randomised trials. *Lancet*. 2010;376:1741–50.
- Rothwell PM, Price JF, Fowkes FG, Zanchetti A, Roncaglioni MC, Tognoni G, et al. Short-term effects of daily aspirin on cancer incidence, mortality, and non-vascular death: analysis of the time course of risks and benefits in 51 randomised controlled trials. *Lancet*. 2012;379:1602–12.
- Chan AT, Arber N, Burn J, Chia WK, Elwood P, Hull MA, et al. Aspirin in the chemoprevention of colorectal neoplasia: an overview. *Cancer Prev Res (Phila)*. 2012;5:164–78.
- Taketo MM. Cyclooxygenase-2 inhibitors in tumorigenesis (part I). *J Natl Cancer Inst*. 1998;90:1529–36.
- Elwood PC, Gallagher AM, Duthie GG, Mur LAJ, Morgan G. Aspirin, salicylates, and cancer. *Lancet*. 2009;373:1301–9.
- Yin H, Xu H, Zhao Y, Yang W, Cheng J, Zhou Y. Cyclooxygenase-independent effects of aspirin on HT-29 human colon cancer cells, revealed by oligonucleotide microarrays. *Biotechnol Lett*. 2006;28:1263–70.
- Maglietta R, Liuzzi VC, Cattaneo E, Laczko E, Piepoli A, Panza A, et al. Molecular pathways undergoing dramatic transcriptomic changes during tumor development in the human colon. *BMC Cancer*. 2012;12:608.
- Mariadason JM, Arango D, Corner GA, Aranes MJ, Hotchkiss KA, Yang W, et al. A gene expression profile that defines colon cell maturation in vitro. *Cancer Res*. 2002;62:4791–804.
- Halbleib JM, Saaf AM, Brown PO, Nelson WJ. Transcriptional modulation of genes encoding structural characteristics of differentiating enterocytes during development of a polarized epithelium in vitro. *Mol Biol Cell*. 2007;18:4261–78.
- Sugiyama Y, Farrow B, Murillo C, Li J, Watanabe H, Sugiyama K, et al. Analysis of differential gene expression patterns in colon cancer and cancer stroma using microdissected tissues. *Gastroenterology*. 2005;128:480–6.
- Notterman DA, Alon U, Sierk AJ, Levine AJ. Transcriptional gene expression profiles of colorectal adenoma, adenocarcinoma, and normal tissue examined by oligonucleotide arrays. *Cancer Res*. 2001;61:3124–30.
- St Croix B, Rago C, Velculescu V, Traverso G, Romans KE, Montgomery E, et al. Genes expressed in human tumor endothelium. *Science*. 2000;289:1197–202.
- Kitahara O, Furukawa Y, Tanaka T, Kihara C, Ono K, Yanagawa R, et al. Alterations of gene expression during colorectal carcinogenesis revealed by cDNA microarrays after laser-capture microdissection of tumor tissues and normal epithelia. *Cancer Res*. 2001;61:3544–9.
- Birkenkamp-Demtroder K, Christensen LL, Olesen SH, Frederiksen CM, Laiho P, Aaltonen LA, et al. Gene expression in colorectal cancer. *Cancer Res*. 2002;62:4352–63.
- Mojica W, Hawthorn L. Normal colon epithelium: a dataset for the analysis of gene expression and alternative splicing events in colon disease. *BMC Genomics*. 2010;11:5.
- Hutt AJ, Caldwell J, Smith RL. The metabolism of aspirin in man: a population study. *Xenobiotica*. 1986;16:239–49.
- Kuehl GE, Bigler J, Potter JD, Lampe JW. Glucuronidation of the aspirin metabolite salicylic acid by expressed UDP-glucuronosyltransferases and human liver microsomes. *Drug Metab Dispos*. 2006;34:199–202.
- Ciotti M, Marrone A, Potter C, Owens IS. Genetic polymorphism in the human UGT1A6 (planar phenol) UDP-glucuronosyltransferase: pharmacological implications. *Pharmacogenetics*. 1997;7:485–95.
- Chen Y, Kuehl GE, Bigler J, Rimorin CF, Schwarz Y, Shen DD, et al. UGT1A6 polymorphism and salicylic acid glucuronidation following aspirin. *Pharmacogenet Genomics*. 2007;17:571–9.
- van Oijen M. Effect of genetic polymorphisms in UDP-glucuronosyltransferase 1A6 (*UGT1A6*) on acetylsalicylic acid metabolism in healthy female volunteers. *Pharmacology*. 2009;83:237–42.
- Bigler J, Whitton J, Lampe JW, Fosdick L, Bostick RM, Potter JD. CYP2C9 and UGT1A6 genotypes modulate the protective effect of aspirin on colon adenoma risk. *Cancer Res*. 2001;61:3566–9.
- Chan AT, Tranah GJ, Giovannucci EL, Hunter DJ, Fuchs CS. Genetic variants in the UGT1A6 enzyme, aspirin use, and the risk of colorectal adenoma. *J Natl Cancer Inst*. 2005;97:457–60.
- Samowitz WS, Wolff RK, Curtin K, Sweeney C, Ma KN, Andersen K, et al. Interactions between CYP2C9 and UGT1A6 polymorphisms and nonsteroidal anti-inflammatory drugs in colorectal cancer prevention. *Clin Gastroenterol Hepatol*. 2006;4:894–901.
- Thompson CL, Plummer SJ, Merkulova A, Cheng I, Tucker TC, Casey G, et al. No association between cyclooxygenase-2 and uridine diphosphate glucuronosyltransferase 1A6 genetic polymorphisms and colon cancer risk. *World J Gastroenterol*. 2009;15:2240–4.
- McGreavey LE, Turner F, Smith G, Boylan K, Timothy Bishop D, Forman D, et al. No evidence that polymorphisms in CYP2C8, CYP2C9, UGT1A6, PPARdelta and PPARgamma act as modifiers of the protective effect of regular NSAID use on the risk of colorectal carcinoma. *Pharmacogenet Genomics*. 2005;15:713–21.
- Hubner RA, Muir KR, Liu JF, Logan RF, Grainge M, Armitage N, et al. Genetic variants of UGT1A6 influence risk of colorectal adenoma recurrence. *Clin Cancer Res*. 2006;12:6585–9.
- Osawa K, Nakarai C, Akiyama M, Hashimoto R, Tsutou A, Takahashi J, et al. Association between polymorphisms in UDP-glucuronosyltransferase 1A6 and 1A7 and colorectal cancer risk. *Asian Pac J Cancer Prev*. 2012;13:2311–4.
- Navarro SL, Saracino MR, Makar KW, Thomas SS, Li L, Zheng Y, et al. Determinants of aspirin metabolism in healthy men and women: Effects of dietary inducers of UGT. *J Nutrigenet Nutrigenomics*. 2011;4:110–8.
- Lampe JW, Bigler J, Horner NK, Potter JD. UDP-glucuronosyltransferase (*UGT1A1*28* and *UGT1A6*2*) polymorphisms in Caucasians and Asians: relationships to serum bilirubin concentrations. *Pharmacogenetics*. 1999;9:341–9.
- Schwartz B, Avivi C, Lamprecht SA. Isolation and characterization of normal and neoplastic colonic epithelial cell populations. *Gastroenterology*. 1991;100:692–702.
- Gene Expression Omnibus. [<http://www.ncbi.nlm.nih.gov/geo/>]
- Shureiqi I, Chen D, Day RS, Zuo X, Hochman FL, Ross WA, et al. Profiling lipoygenase metabolism in specific steps of colorectal tumorigenesis. *Cancer Prev Res (Phila)*. 2010;3:829–38.
- Wu Z, Irizarry RA. Preprocessing of oligonucleotide array data. *Nat Biotechnol*. 2004;22:656–8. author reply 658.
- Benjamini Y, Hochberg Y. Controlling the false discovery rate - a practical and powerful approach to multiple testing. *J Royal Statist Soc Serial B*. 1995;57:289–300.
- Eisen MB, Spellman PT, Brown PO, Botstein D. Cluster analysis and display of genome-wide expression patterns. *Proc Natl Acad Sci U S A*. 1998;95:14863–8.
- Saldanha AJ. Java Treeview—extensible visualization of microarray data. *Bioinformatics*. 2004;20:3246–8.
- Nagar S, Zalatoris JJ, Blanchard RL. Human UGT1A6 pharmacogenetics: identification of a novel SNP, characterization of allele frequencies and functional analysis of recombinant allozymes in human liver tissue and in cultured cells. *Pharmacogenetics*. 2004;14:487–99.
- Adegboyega PA, Mifflin RC, DiMari JF, Saada JI, Powell DW. Immunohistochemical study of myofibroblasts in normal colonic mucosa, hyperplastic polyps, and adenomatous colorectal polyps. *Arch Pathol Lab Med*. 2002;126:829–36.
- Mahida YR, Beltinger J, Makh S, Goke M, Gray T, Podolsky DK, et al. Adult human colonic subepithelial myofibroblasts express extracellular matrix proteins and cyclooxygenase-1 and -2. *Am J Physiol*. 1997;273:G1341–8.
- Powell DW, Adegboyega PA, Di Mari JF, Mifflin RC. Epithelial cells and their neighbors I. Role of intestinal myofibroblasts in development, repair, and cancer. *Am J Physiol Gastrointest Liver Physiol*. 2005;289:G2–7.
- Kosinski C, Li VS, Chan AS, Zhang J, Ho C, Tsui WY, et al. Gene expression patterns of human colon tops and basal crypts and BMP antagonists as intestinal stem cell niche factors. *Proc Natl Acad Sci U S A*. 2007;104:15418–23.
- Yan M, Kerko RM, Platzer P, Dawson D, Willis J, Tong M, et al. 15-Hydroxyprostaglandin dehydrogenase, a COX-2 oncogene antagonist, is a TGF-beta-induced suppressor of human gastrointestinal cancers. *Proc Natl Acad Sci U S A*. 2004;101:17468–73.
- van de Wetering M, Sancho E, Verweij C, de Lau W, Oving I, Hurlstone A, et al. The beta-catenin/TCF-4 complex imposes a crypt progenitor phenotype on colorectal cancer cells. *Cell*. 2002;111:241–50.
- Huilit J, Wang C, Li Z, Albanese C, Rao M, Di Vizio D, et al. Cyclin D1 genetic heterozygosity regulates colonic epithelial cell differentiation and tumor number in ApcMin mice. *Mol Cell Biol*. 2004;24:7598–611.

46. Flynn C, Montrose DC, Swank DL, Nakanishi M, Ilsley JN, Rosenberg DW. Deoxycholic acid promotes the growth of colonic aberrant crypt foci. *Mol Carcinog*. 2007;46:60–70.
47. Boman BM, Walters R, Fields JZ, Kovatich AJ, Zhang T, Isenberg GA, et al. Colonic crypt changes during adenoma development in familial adenomatous polyposis: immunohistochemical evidence for expansion of the crypt base cell population. *Am J Pathol*. 2004;165:1489–98.
48. Mikami T, Mitomi H, Hara A, Yanagisawa N, Yoshida T, Tsuruta O, et al. Decreased expression of CD44, alpha-catenin, and deleted colon carcinoma and altered expression of beta-catenin in ulcerative colitis-associated dysplasia and carcinoma, as compared with sporadic colon neoplasms. *Cancer*. 2000;89:733–40.
49. Jay P, Berta P, Blache P. Expression of the carcinoembryonic antigen gene is inhibited by SOX9 in human colon carcinoma cells. *Cancer Res*. 2005;65:2193–8.
50. Davenport A, Hale RJ, Hunt CR, Bigley G, McMahon RF. Expression of Ki-67 and cytokeratin 20 in hyperplastic polyps of the colorectum. *J Clin Pathol*. 2003;56:200–4.
51. Blache P, van de Wetering M, Duluc I, Domon C, Berta P, Freund JN, et al. SOX9 is an intestine crypt transcription factor, is regulated by the Wnt pathway, and represses the CDX2 and MUC2 genes. *J Cell Biol*. 2004;166:37–47.
52. Seibert K, Zhang Y, Leahy K, Hauser S, Masferrer J, Isakson P. Distribution of COX-1 and COX-2 in normal and inflamed tissues. *Adv Exp Med Biol*. 1997;400A:167–70.
53. Bond PA, Cundall RL. Properties of monoamine oxidase (MAO) in human blood platelets, plasma, lymphocytes and granulocytes. *Clin Chim Acta*. 1977;80:317–26.
54. Beaulieu JF, Vachon PH. Reciprocal expression of laminin A-chain isoforms along the crypt-villus axis in the human small intestine. *Gastroenterology*. 1994;106:829–39.
55. Clevers H. Wnt/beta-catenin signaling in development and disease. *Cell*. 2006;127:469–80.
56. Cadigan KM, Nusse R. Wnt signaling: a common theme in animal development. *Genes Dev*. 1997;11:3286–305.
57. Bienz M, Clevers H. Linking colorectal cancer to Wnt signaling. *Cell*. 2000;103:311–20.
58. Morin PJ, Sparks AB, Korinek V, Barker N, Clevers H, Vogelstein B, et al. Activation of beta-catenin-Tcf signaling in colon cancer by mutations in beta-catenin or APC. *Science*. 1997;275:1787–90.
59. Potter JD. Morphogens, morphostats, microarchitecture and malignancy. *Nat Rev Cancer*. 2007;7:464–74.
60. Tlsty TD, Hein PW. Know thy neighbor: stromal cells can contribute oncogenic signals. *Curr Opin Genet Dev*. 2001;11:54–9.
61. Ronnov-Jessen L, Petersen OW, Bissell MJ. Cellular changes involved in conversion of normal to malignant breast: importance of the stromal reaction. *Physiol Rev*. 1996;76:69–125.
62. Elenbaas B, Weinberg RA. Heterotypic signaling between epithelial tumor cells and fibroblasts in carcinoma formation. *Exp Cell Res*. 2001;264:169–84.
63. Lin YM, Furukawa Y, Tsunoda T, Yue CT, Yang KC, Nakamura Y. Molecular diagnosis of colorectal tumors by expression profiles of 50 genes expressed differentially in adenomas and carcinomas. *Oncogene*. 2002;21:4120–8.
64. Perez-Villamil B, Romera-Lopez A, Hernandez-Prieto S, Lopez-Campos G, Calles A, Lopez-Asenjo JA, et al. Colon cancer molecular subtypes identified by expression profiling and associated to stroma, mucinous type and different clinical behavior. *BMC Cancer*. 2012;12:260.
65. Vane JR. Inhibition of prostaglandin synthesis as a mechanism of action for aspirin-like drugs. *Nat New Biol*. 1971;231:232–5.
66. Eberhart CE, Coffey RJ, Radhika A, Giardiello FM, Ferrenbach S, DuBois RN. Up-regulation of cyclooxygenase 2 gene expression in human colorectal adenomas and adenocarcinomas. *Gastroenterology*. 1994;107:1183–8.
67. Kunzelmann K, Mall M. Electrolyte transport in the mammalian colon: mechanisms and implications for disease. *Physiol Rev*. 2002;82:245–89.
68. Feske S. Calcium signalling in lymphocyte activation and disease. *Nat Rev Immunol*. 2007;7:690–702.
69. Saaf AM, Halbleib JM, Chen X, Yuen ST, Leung SY, Nelson WJ, et al. Parallels between global transcriptional programs of polarizing Caco-2 intestinal epithelial cells in vitro and gene expression programs in normal colon and colon cancer. *Mol Biol Cell*. 2007;18:4245–60.
70. Polakis P. Wnt signaling and cancer. *Genes Dev*. 2000;14:1837–51.
71. Sabates-Bellver J, Van der Flier LG, de Palo M, Cattaneo E, Maake C, Rehrauer H, et al. Transcriptome profile of human colorectal adenomas. *Mol Cancer Res*. 2007;5:1263–75.
72. Fink SP, Yang DH, Barnholtz-Sloan JS, Ryu YM, Mikkola D, Potter JD, et al. Colonic 15-PGDH Levels are stable across distance and time and are not perturbed by aspirin intervention. *Dig Dis Sci*. 2013;58:2615–22.
73. Chulada PC, Thompson MB, Mahler JF, Doyle CM, Gaul BW, Lee C, et al. Genetic disruption of PtgS-1, as well as PtgS-2, reduces intestinal tumorigenesis in Min mice. *Cancer Res*. 2000;60:4705–8.
74. Tosco P, Lazzarato L. Mechanistic insights into cyclooxygenase irreversible inactivation by aspirin. *ChemMedChem*. 2009;4:939–45.
75. Ruffin MT, Krishnan K, Rock CL, Normolle D, Vaerten MA, Peters-Golden M, et al. Suppression of human colorectal mucosal prostaglandins: determining the lowest effective aspirin dose. *J Natl Cancer Inst*. 1997;89:1152–60.
76. Bousserouel S, Gosse F, Bouhadjar M, Soler L, Marescaux J, Raul F. Long-term administration of aspirin inhibits tumour formation and triggers anti-neoplastic molecular changes in a pre-clinical model of colon carcinogenesis. *Oncol Rep*. 2010;23:511–7.
77. Agundez JA, Martinez C, Perez-Sala D, Carballo M, Torres MJ, Garcia-Martin E. Pharmacogenomics in aspirin intolerance. *Curr Drug Metab*. 2009;10:998–1008.

Submit your next manuscript to BioMed Central and take full advantage of:

- Convenient online submission
- Thorough peer review
- No space constraints or color figure charges
- Immediate publication on acceptance
- Inclusion in PubMed, CAS, Scopus and Google Scholar
- Research which is freely available for redistribution

Submit your manuscript at
www.biomedcentral.com/submit

