

# Complete genome sequence of a broad-host-range lytic *Dickeya* spp. bacteriophage $\phi$ D5

Robert Czajkowski · Zofia Ozymko ·  
Szymon Zwirowski · Ewa Lojkowska

Received: 17 April 2014 / Accepted: 29 June 2014 / Published online: 8 July 2014  
© The Author(s) 2014. This article is published with open access at Springerlink.com

**Abstract** Little is known about lytic bacteriophages infecting plant-pathogenic *Dickeya* spp. These bacteria cause economically significant losses in arable crops and ornamental plant production worldwide. At present, there is no effective control of diseases caused by *Dickeya* spp. A novel bacteriophage,  $\phi$ D5, belonging to the family *Myoviridae*, order *Caudovirales*, that could be used to control these bacteria was isolated previously. This report provides information on its characterization. The  $\phi$ D5 genome consists of 155,346-bp-length double-stranded DNA with a GC content of 49.7 % and is predicted to have 196 open reading frames (ORFs) with an average length of 711 nucleotides each. The ORFs were classified into functional groups, including phage structure, packaging, DNA metabolism, regulation, and additional functions. The phage lifestyle predicted from PHACTS indicated that

$\phi$ D5 may be a lytic phage and therefore can efficiently kill plant-pathogenic *Dickeya* spp.

*Dickeya* spp. (formerly *Erwinia chrysanthemi* or *Pectobacterium chrysanthemum*) together with *Pectobacterium carotovorum* and *P. atrosepticum* (formerly *Erwinia carotovora* subsp. *carotovora* and *Erwinia carotovora* subsp. *atroseptica*, respectively) are plant-pathogenic bacteria that are responsible for economically important losses in potato and other arable and ornamental crops worldwide [8, 10]. They are recognized to be among the top ten most destructive bacterial pathogens in agriculture [6]. In the past, *Dickeya* spp. were associated mainly with crop diseases in tropical and subtropical regions and were rarely isolated from diseased plants cultivated in Western and Northern Europe [5]. However, recently, there has been an increase in potato crop infection in Europe attributed to *Dickeya* spp., and especially to the presence and spread of a new virulent species named *D. solani* [11]. *D. solani* has been reported in several countries in Western Europe, including France, the Netherlands, Belgium, Poland, Germany, Spain, Sweden, Finland, and the United Kingdom, as well as in Israel and Georgia [11].

At present, there is no effective control of *Dickeya* spp. diseases, whether based on physical, chemical or biological measures under field conditions [3]. There are also no immune crop cultivars readily available on the market. Current control relies solely on measures in crop production that avoid or reduce the risks of contamination of the propagative material – measures that are far from being reliable [3].

Bacteriophages are a promising and environmentally friendly substitute to supplement present control strategies to protect growing plants as well as harvested crops against plant-pathogenic bacteria [7]. Their potential as biological

---

**The nucleotide sequence accession number** The complete genome sequence of bacteriophage  $\phi$ D5 is available in the GenBank (<https://www.ncbi.nlm.nih.gov/genbank/>) database under accession number KJ716335.

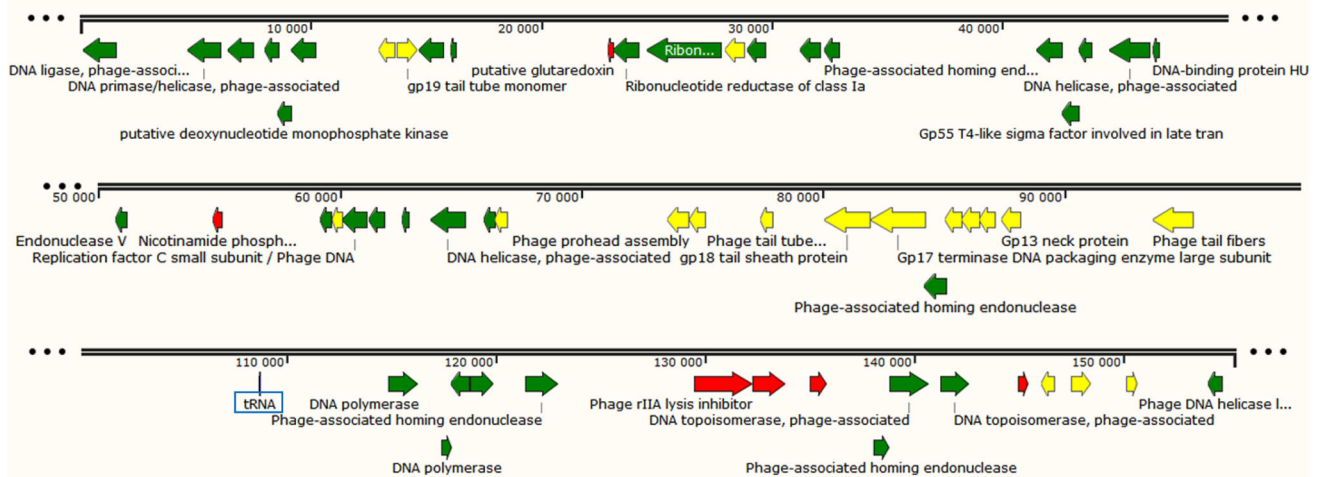
---

**Electronic supplementary material** The online version of this article (doi:10.1007/s00705-014-2170-8) contains supplementary material, which is available to authorized users.

---

R. Czajkowski (✉) · Z. Ozymko · E. Lojkowska  
Department of Biotechnology, Intercollegiate Faculty of  
Biotechnology, University of Gdansk, Medical University of  
Gdansk, Kladki 24, 80-822 Gdansk, Poland  
e-mail: robert.czajkowski@biotech.ug.edu.pl

S. Zwirowski  
Department of Molecular and Cellular Biology, Intercollegiate  
Faculty of Biotechnology, University of Gdansk, Medical  
University of Gdansk, Kladki 24, 80-822 Gdansk, Poland



**Fig. 1** The genome of the bacteriophage  $\phi$ D5 (155,346 bp). Structural and functional annotation was obtained from the IGS Annotation Service (Institute for Genome Sciences, University of Maryland School of Medicine automated pipeline <http://ae.igs.umaryland.edu/cgi/index.cgi>) and from RAST (Rapid Annotation using Subsystem Technology, accessed via the internet <http://rast.nmpdr.org/>). ORFs coding for proteins involved in DNA/RNA transcription, translation and metabolism are marked in green, ORFs coding for proteins

involved in bacteriophage particle assembly are marked in yellow, and ORFs coding for enzymes involved in metabolism are marked in red. The tRNA is marked with a blue square. Arrows indicate the direction of transcription and translation. The ORFs coding for hypothetical and conserved hypothetical proteins are not shown on the map. The figure was generated using the genome visualization program SnapGene ver. 2.3.4 (<http://www.snapgene.com/>)

control agents has been evaluated in different studies involving various plant pathogens [6]. Recently, Adrienssens and co-workers presented a genetic and proteomic study on the first *D. solani* phage, named LIMEstone [1] and we presented data on isolation and characterization of several lytic bacteriophages against different *Dickeya* species [4].

Despite the growing interest in using bacteriophages to control *Dickeya* species, in general, there is still very little information on their genome organization and structure. Data on phage genomics may facilitate development of biological control procedures. For example, the understanding of the genetic background of the phage lifestyle can help in designing better biological control applications, and new delivery strategies may support longer stability of phages in the environment.

So far, there is only one *Dickeya* spp. phage genome available in the GenBank database (NC019925), and this phage has a very restricted host range, able to infect *D. solani* only [1]. In contrast, bacteriophage  $\phi$ D5, despite its morphological similarity (both phages belong to the family *Myoviridae*), has a broad host range, larger genome, and higher GC content in comparison with LIMEstone phage [4]. Due to its broad host range, phage  $\phi$ D5 appears to be a very good candidate as biological control agent.

The  $\phi$ D5 phage was isolated in our previous study from arable soil in the Pomorskie region in Poland, primarily using *D. solani* (strain IPO2222) as a host [4]. It has been characterized in full for its morphologic and

phenotypic features. Host-range experiments have showed that it can infect/lyse not only *D. solani* but also other *Dickeya* spp., including *D. dianthicola*, *D. zeae*, *D. dadantii* and *D. chrysanthemi* [4]. Transmission electron microscopy as described by Czajkowski et al. [4] revealed that phage  $\phi$ D5 belongs to the family *Myoviridae* and the order *Caudovirales*, with a contractive tail (ca. 140 nm in length) and an icosahedral head (ca. 100 nm in diameter).

To obtain a high phage titer (ca.  $10^{13}$ – $10^{14}$  plaque-forming units [pfu]  $\text{ml}^{-1}$ ) for genomic DNA purification, phage  $\phi$ D5 was enriched in *D. solani* IPO2222 [9] cultures as described previously [2]. After enrichment, bacterial cells were removed by centrifugation ( $8000\times g$ , 20 min), and the resulting phage suspension (ca. 50 ml) was filtered using a 0.22- $\mu\text{m}$  membrane filter to remove bacterial debris. The phage suspension was treated with DNase I (Sigma-Aldrich; final concentration,  $0.5 \text{ mg ml}^{-1}$ ) for 60 min at  $37^\circ\text{C}$  with shaking (100 rpm) to digest the bacterial DNA. Phage particles were further purified and concentrated *via* ultracentrifugation ( $35,000\times g$ ,  $4^\circ\text{C}$ ) in a CsCl (Sigma) gradient with densities of 1.4 to  $1.7 \text{ g ml}^{-1}$  for 3 h following by a second round of equilibrium gradient ultracentrifugation ( $35,000\times g$ ,  $4^\circ\text{C}$ ) in  $1.4 \text{ g ml}^{-1}$  CsCl for 18 h. The resulting high-titer phage suspension (ca. 1.5–2 ml) was dialyzed to remove CsCl at  $4^\circ\text{C}$  in CsCl solutions in water in descending CsCl concentrations (60 % to 10 % CsCl) for 2 h. The  $\phi$ D5 phage genomic DNA was isolated as described previously [2].

Phage  $\phi$ D5 genomic DNA was sequenced using the Illumina technology and re-assembled *de novo* at Baseclear, The Netherlands ([www.baseclear.com](http://www.baseclear.com)). Structural and functional annotation was obtained from the IGS Annotation Service (Institute for Genome Sciences, University of Maryland School of Medicine automated pipeline <http://ae.igs.umaryland.edu/cgi/index.cgi>) and from RAST (Rapid Annotation using Subsystem Technology, accessed via the internet <http://rast.nmpdr.org/>). The  $\phi$ D5 genome was mapped and annotated using available phage genome sequences deposited in GenBank (<http://www.ncbi.nlm.nih.gov/genbank/>). The lifestyle of phage  $\phi$ D5 (lytic or temperate) was predicted using the PHACTS program (<http://www.phantome.org/PHACTS/online.htm>).

The genome sequence of phage  $\phi$ D5 contains 155,346 bp, 196 predicted open reading frames (ORFs; predicted protein-encoding genes [PEGs]) and an average GC content of 49.7 %. The average gene length was predicted to be 711 nucleotides, and 89.9 % of the genome consists of coding regions. Of the 196 putative PEGs, 50 PEGs (25.5 %) have an assigned function, 42 (21.4 %) were unclassified with no assigned category, and eight (4.1 %) PEGs have unknown function. The rest were classified as (conserved) hypothetical proteins. Functional grouping of predicted ORFs (and PEGs) revealed that two ORFs are associated with nucleotide metabolism, one with energy metabolism, seven with transport and binding proteins, nine with DNA metabolism, three with transcription, one with regulatory functions, four with the cell envelope, six with cellular processes, and four with mobile and extrachromosomal elements (Supplementary Tab. 1). The  $\phi$ D5 genome encodes only one tRNA, and for the majority of genes (94.4 %), the start codon for transcription is ATG, whereas GTG and TTG are start codons in only 4.1 % and 1.5 % phage genes, respectively. The functions of the majority of phage  $\phi$ D5 genes could not be identified, probably due to the lack of annotation data on phages present in the majority of international genome sequence databases (Fig. 1).

To our knowledge, this is the first report of a broad-host-range *Dickeya* spp.-infecting bacteriophage and its complete genome sequence, and it is the first genome sequence of a *Dickeya* spp. bacteriophage isolated in Poland. This sequence will provide useful fundamental information for advanced molecular research on the infection/interaction of phage  $\phi$ D5 and its *Dickeya* spp. host.

**Acknowledgements** This work was financially supported by the National Science Centre, Poland (Narodowe Centrum Nauki, Polska) via a postdoctoral research grant FUGA1 (DEC-2012/04/S/NZ9/00018) to R. C. We are grateful to the whole IGS Annotation Engine team at the Institute for Genome Sciences, University of Maryland School of Medicine, Baltimore, MD, USA, for providing us with the

excellent, free-of-charge genome annotation service (within IGS Annotation Engine <http://ae.igs.umaryland.edu/cgi/index.cgi>). The authors would like to express their gratitude to M. Perombelon (ex. SCRI, Scotland) and D. Krzyzanowska (University of Gdansk, Poland) for their valuable comments on the manuscript and their editorial work.

**Open Access** This article is distributed under the terms of the Creative Commons Attribution License which permits any use, distribution, and reproduction in any medium, provided the original author(s) and the source are credited.

## References

- Adriaenssens EM, Van Vaerenbergh J, Vandenheuevel D, Dunon V, Ceysens PJ, De Proft M, Kropinski AM, Noben JP, Maes M, Lavigne R (2012) T4-related bacteriophage LIMESTONE isolates for the control of soft rot on potato caused by '*Dickeya solani*'. PLoS One 7:e33227
- Clokier MRJ, Kropinski AM (2009) Bacteriophages: methods and protocols, vol 1., Isolation, characterization, and interactions. Series: Methods in molecular biology, vol 501. Humana Press, Springer Science + Business Media, LLC, New York, NY
- Czajkowski R, Pérombelon MCM, van Veen JA, van der Wolf JM (2012) Control of blackleg and tuber soft rot of potato caused by *Pectobacterium* and *Dickeya* species: a review. Plant Pathol 60:999–1013
- Czajkowski R, Ozymko Z, Lojkowska E (2013) Isolation and characterization of novel soilborne lytic bacteriophages infecting *Dickeya* spp. biovar 3 ('*D. solani*'). Plant Pathol. doi:10.1111/ppa.12157
- Janse JD, Ruissen MA (1988) Characterization and classification of *Erwinia chrysanthemi* strains from several hosts in The Netherlands. Phytopathology 78:800–808
- Mansfield J, Genin S, Magori S, Citovsky V, Sriariyanum M, Ronald M, Dow MAX, Verdier V, Beer SV, Machado MA, Toth IAN, Salmond G, Foster GD (2012) Top 10 plant pathogenic bacteria in molecular plant pathology. Mol Plant Pathol 13:614–629
- Okabe N, Goto M (1963) Bacteriophages of plant pathogens. Annu Rev Phytopathol 1:397–418
- Pérombelon MCM (2002) Potato diseases caused by soft rot *Erwinias*: an overview of pathogenesis. Plant Pathol 51:1–12
- Ślawiak M, van Beckhoven JRCM, Speksnijder AGCL, Czajkowski R, Grabe G, van der Wolf JM (2009) Biochemical and genetical analysis reveal a new clade of biovar 3 *Dickeya* spp. strains isolated from potato in Europe. Eur J Plant Pathol 125:245–261
- Toth IK, van der Wolf JM, Sadtler G, Lojkowska E, Hélias V, Pirhonen M, Tsror L, Elphinstone JG (2011) *Dickeya* species: an emerging problem for potato production in Europe. Plant Pathol 60:385–399
- Van der Wolf JM, Nijhuis EH, Kowalewska MJ, Sadtler GS, Parkinson N, Elphinstone JG, Pritchard L, Toth IK, Lojkowska E, Potrykus M, Waleron M, de Vos P, Cleenwerck I, Pirhonen M, Garlant L, Hélias V, Pothier JF, Pflüger V, Duffy B, Tsror L, Manulis S (2013) *Dickeya solani* sp. nov., a pectinolytic plant pathogenic bacterium isolated from potato (*Solanum tuberosum*). Int J Syst Evol Microbiol 64:768–774